



DIGITAL LOG (785) 625-3858

Dual Induction Log

15-051-26,174-00-00

API No.	Company	TDI, Inc.
	Well	Engel No. 1
	Field	Schoenchen
	County	Ellis
	State	Kansas
Location	SE NE SW SE 780' FSL & 1,540' FEL	
Sec: 21	Twp: 15S	Rge: 18W
Permanent Datum	Ground Level	Elevation 1988
Log Measured From	Kelly Bushing	10 Ft. Above Perm. Datum
Drilling Measured From	Kelly Bushing	
		Other Services CNL/CDL MEL
		Elevation K.B. 1998 D.F. 1988 G.L. 1988

Date	9/12/2011
Run Number	One
Depth Driller	3650
Depth Logger	3650
Bottom Logged Interval	3649
Top Log Interval	1100
Casing Driller	8.625 @ 1147
Casing Logger	1145
Bit Size	7.875
Type Fluid in Hole	Chemical
Salinity, ppm CL	3000
Density / Viscosity	9.2   58
pH / Fluid Loss	10.5   6.4
Source of Sample	Flowline
Rm @ Meas. Temp	.48 @ 84
Rmf @ Meas. Temp	.36 @ 84
Rmc @ Meas. Temp	.65 @ 84
Source of Rmf / Rmc	Charts
Rm @ BHT	.36 @ 113
Operating Rig Time	4 Hours
Max Rec. Temp. F	113
Equipment Number	10
Location	Hays
Recorded By	J. Long
Witnessed By	Herb Deines

<<< Fold Here >>>

All interpretations are opinions based on inferences from electrical or other measurements and we cannot and do not guarantee the accuracy or correctness of any interpretation, and we shall not, except in the case of gross or willful negligence on our part, be liable or responsible for any loss, costs, damages, or expenses incurred or sustained by anyone resulting from any interpretation made by any of our officers, agents or employees. These interpretations are also subject to our general terms and conditions set out in our current Price Schedule.

Comments

Thank you for using Log-Tech, Inc.  
(785) 625-3858

Hays, 9 South to Smoky Hill River Road, 1/4 West, North Into

Database File: c:\warrior\data\tdi\_engel no. 1\tdi\_engel\_1hd.db  
 Dataset Pathname: dil\tdistck  
 Presentation Format: dil2in  
 Dataset Creation: Mon Sep 12 19:32:58 2011  
 Charted by: Depth in Feet scaled 1:600

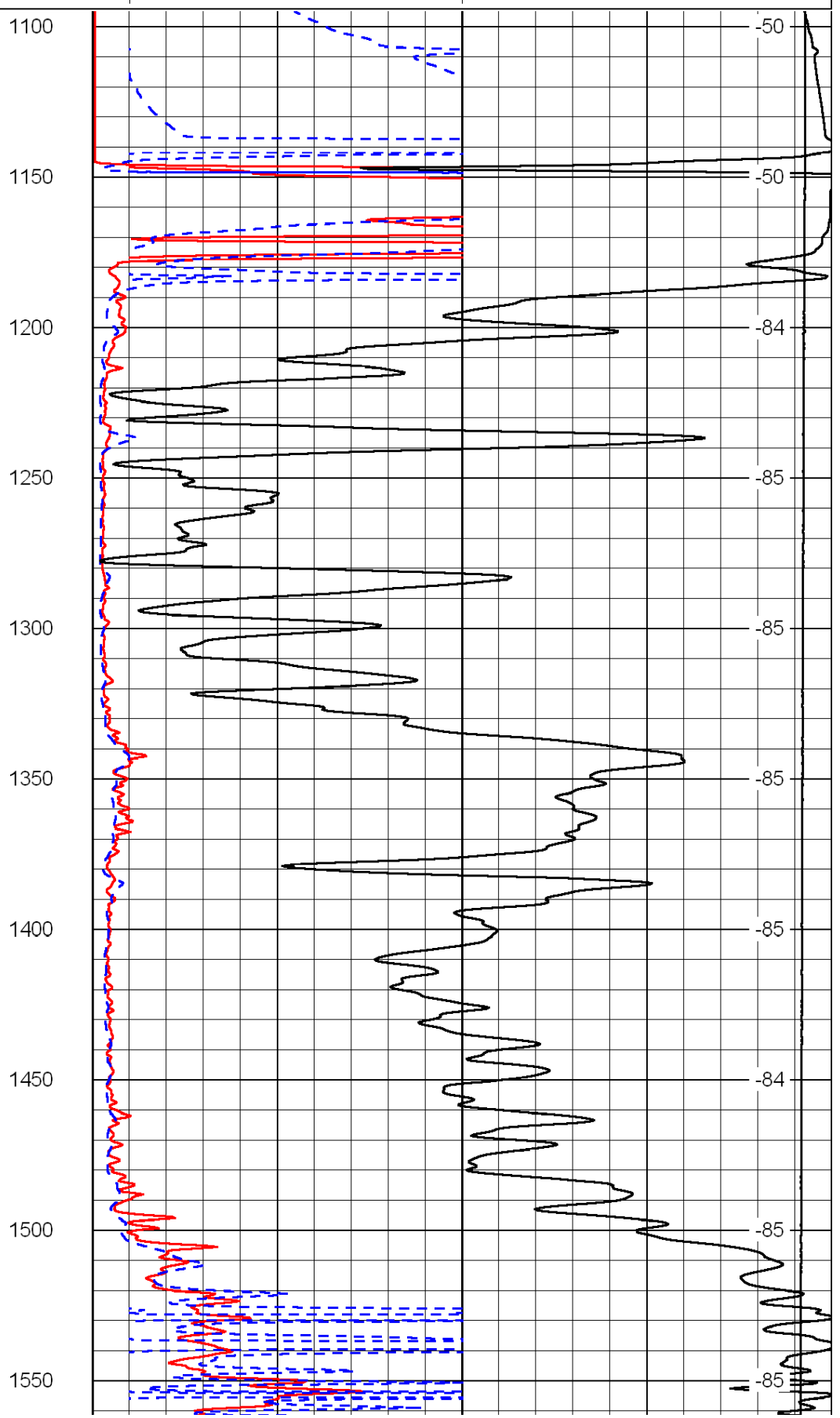
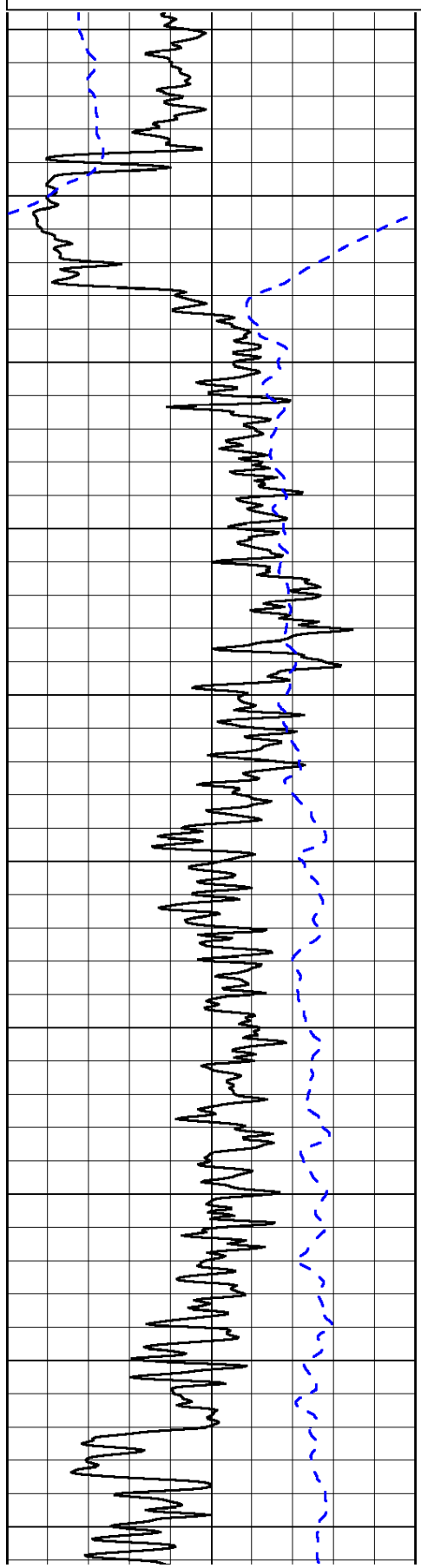
0	Gamma Ray	150
-200	SP (mV)	0

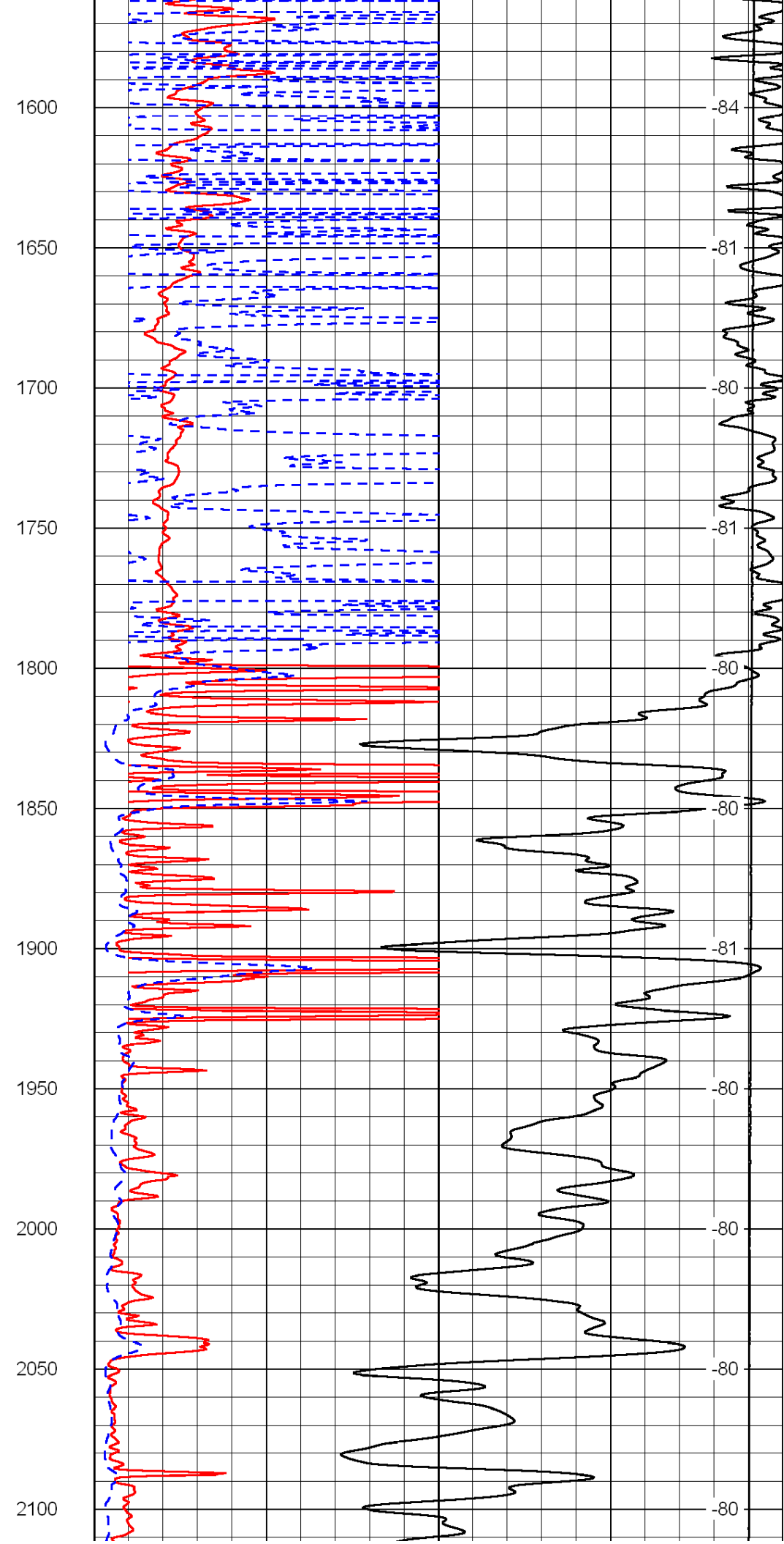
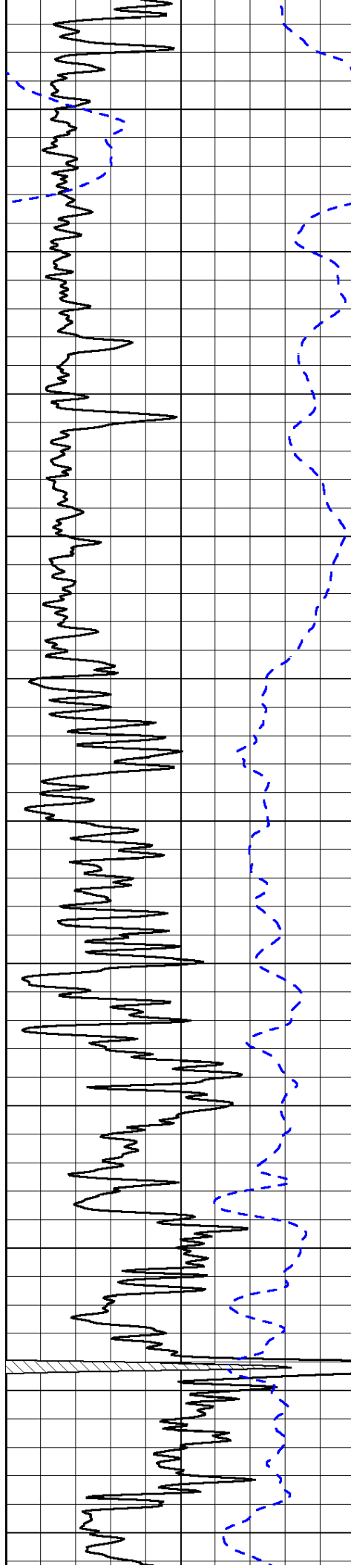
0	Shallow Resistivity	50
0	Deep Resistivity	50

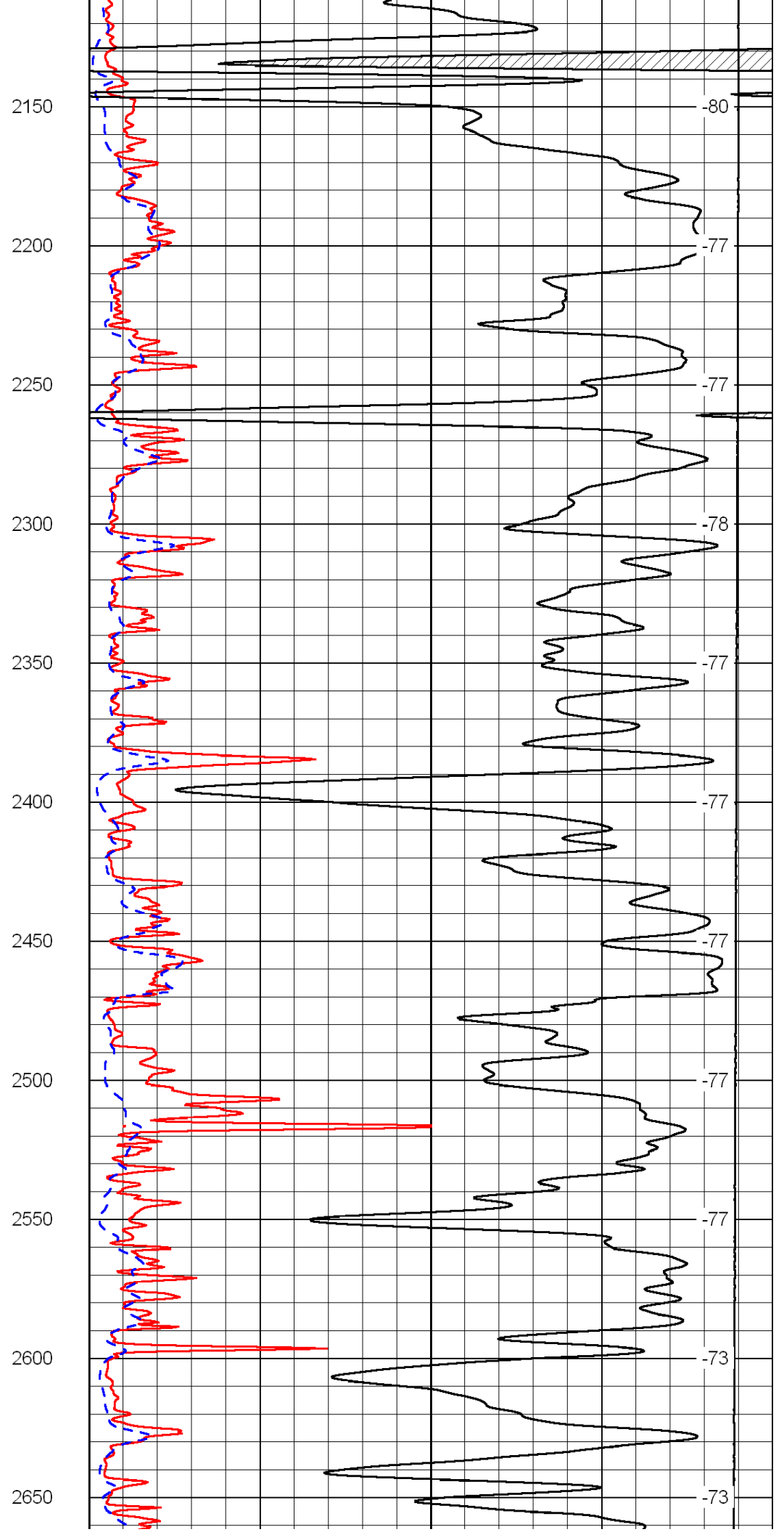
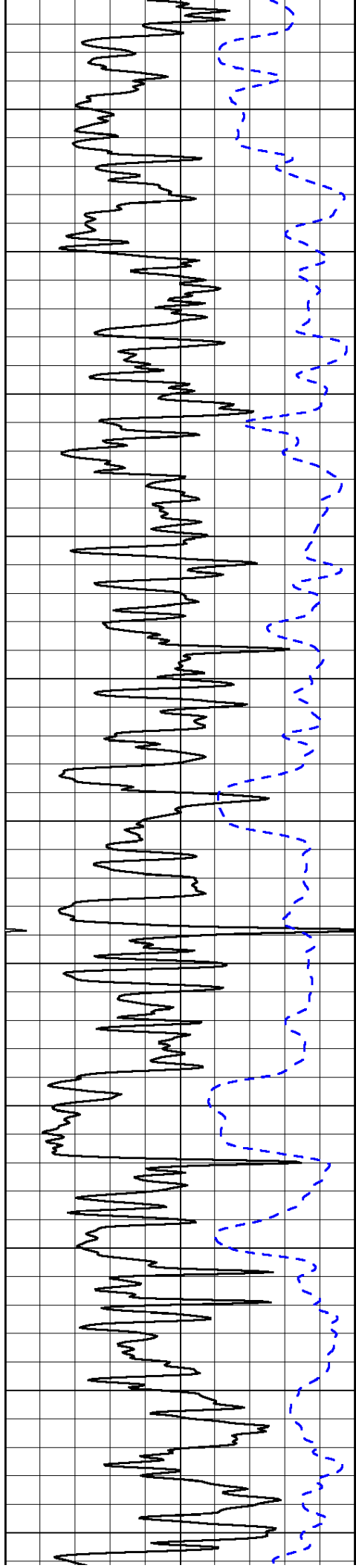
LSPD

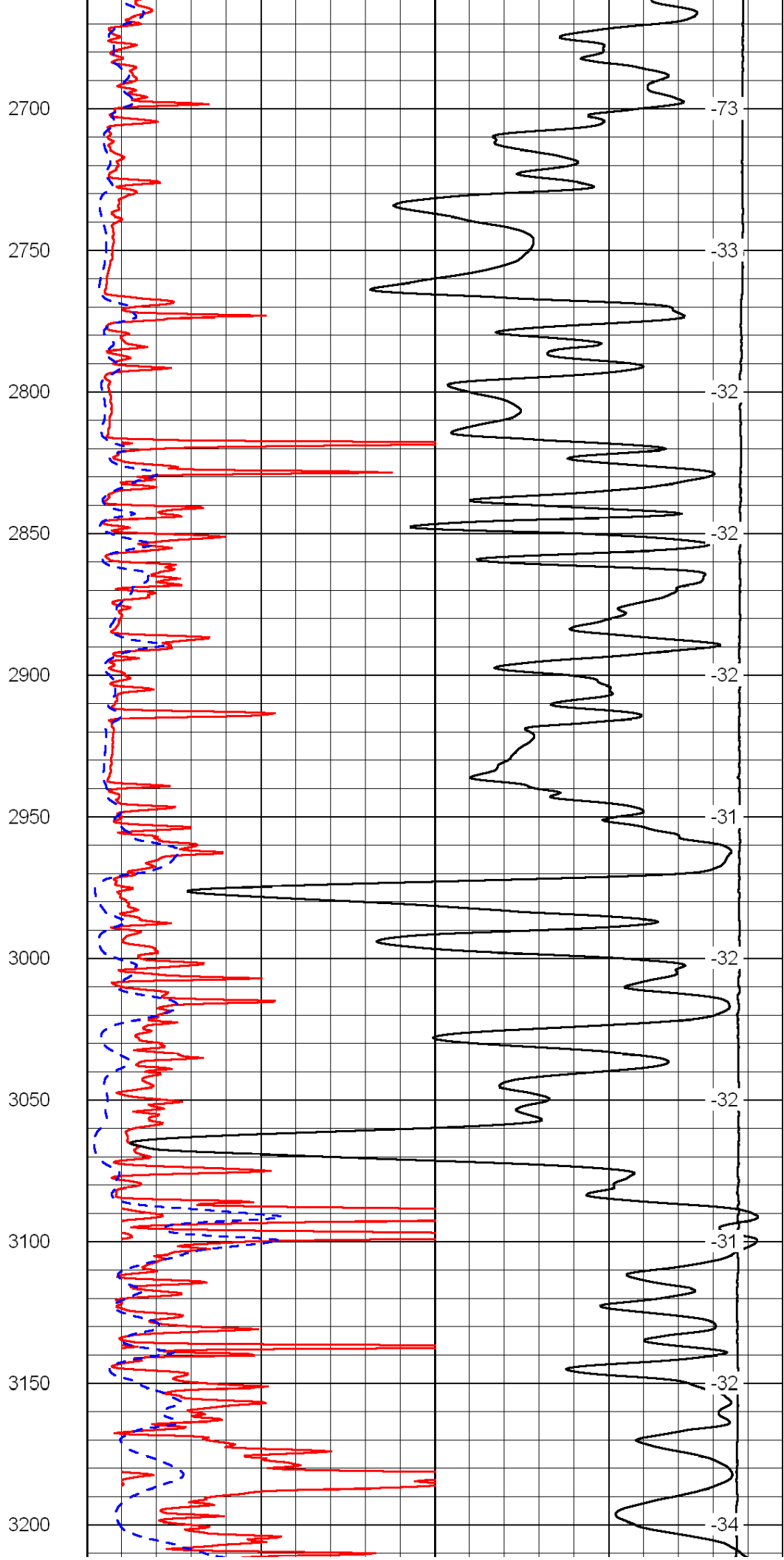
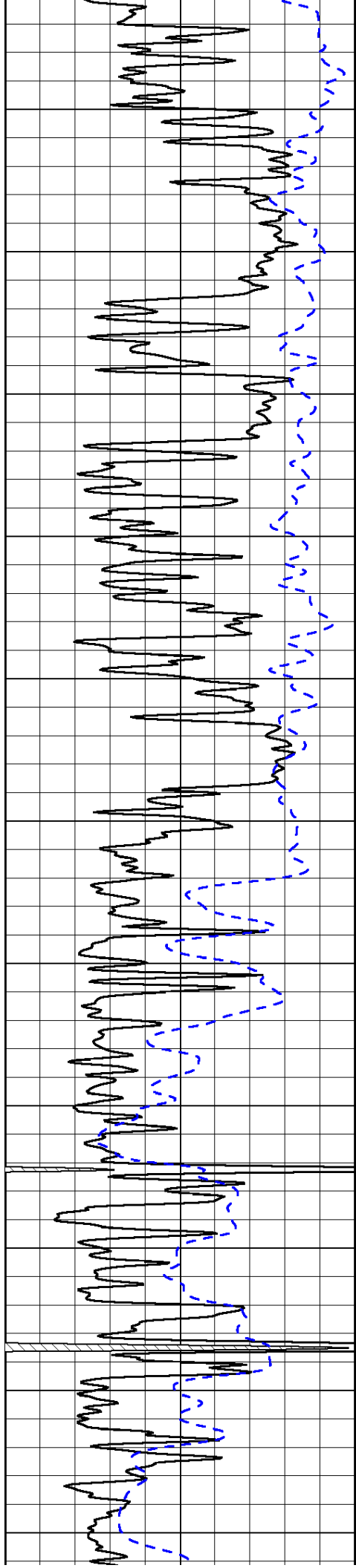
1000	Conductivity	0
15000	Line Tension	0

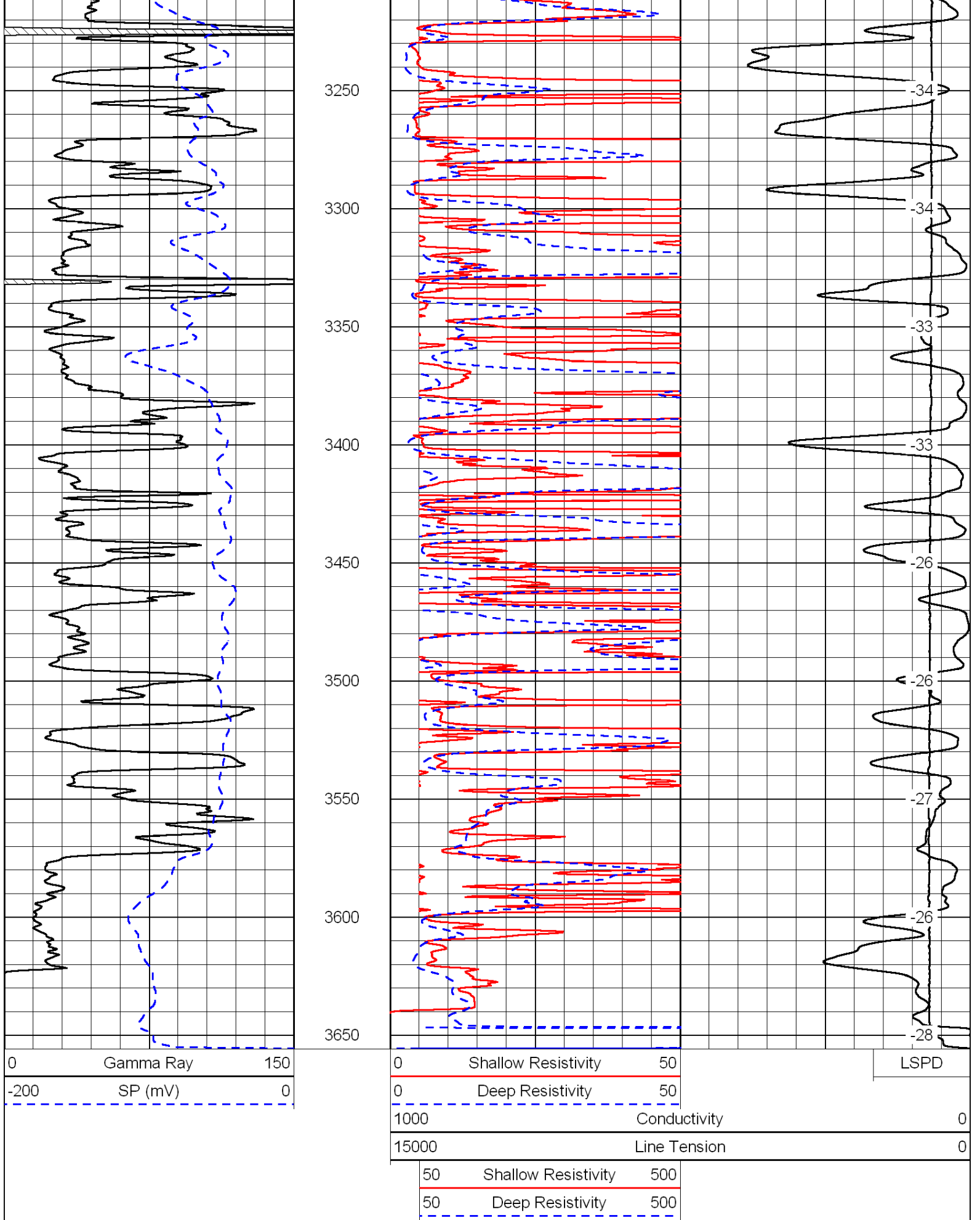
50	Shallow Resistivity	500
50	Deep Resistivity	500









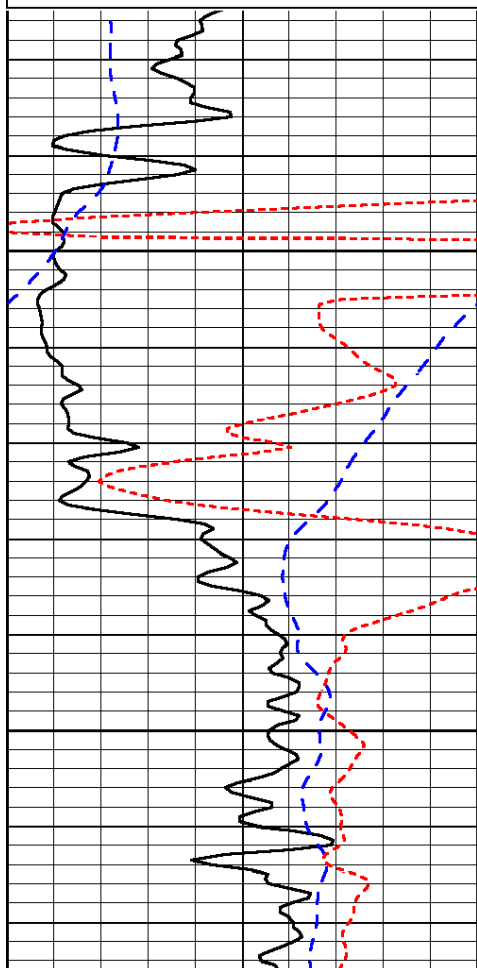


Presentation Format: dil  
 Dataset Creation: Mon Sep 12 19:32:58 2011  
 Charted by: Depth in Feet scaled 1:240

0	Gamma Ray	150
-200	SP (mV)	0
-160	Rxo / Rt	40

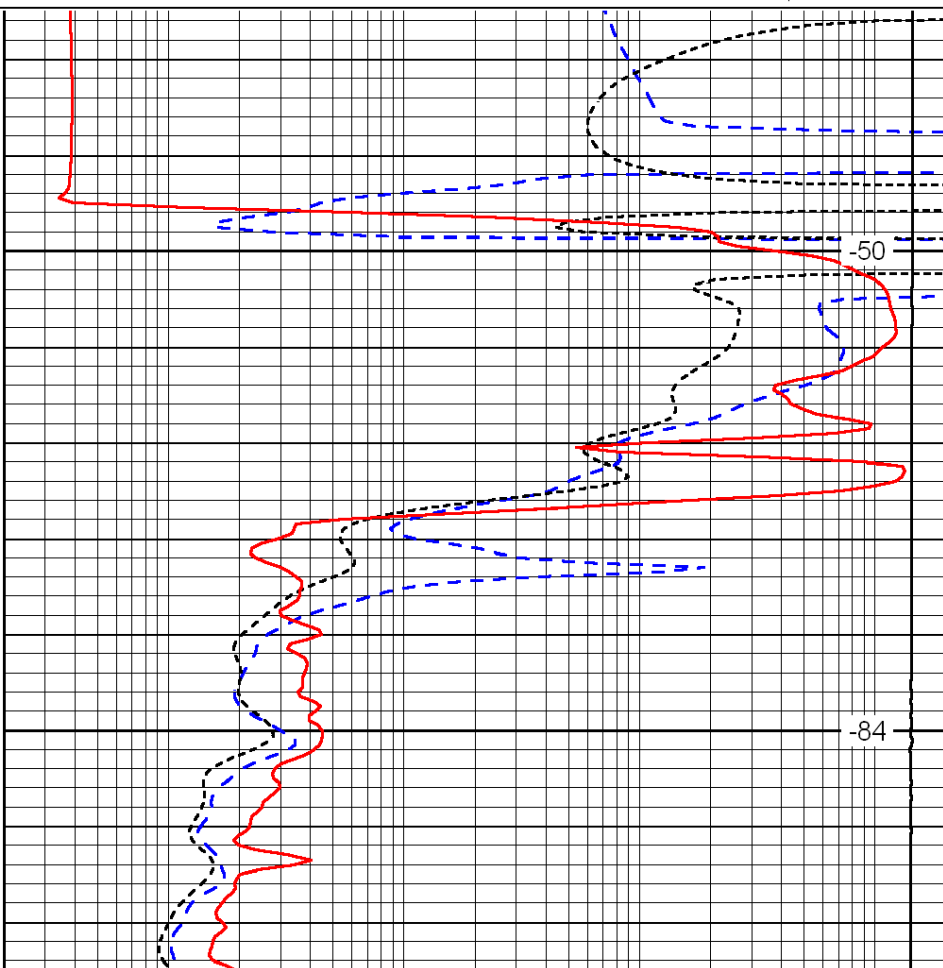
0.2	Deep Resistivity	2000
0.2	Medium Resistivity	2000
0.2	Shallow Resistivity	2000
15000	Line Tension	0

LSPD



1150

1200



-50

-84

0	Gamma Ray	150
-200	SP (mV)	0
-160	Rxo / Rt	40

0.2	Deep Resistivity	2000
0.2	Medium Resistivity	2000
0.2	Shallow Resistivity	2000
15000	Line Tension	0

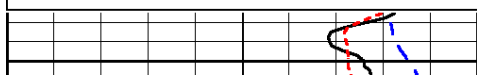
LSPD

Database File: c:\warrior\data\tdj\_engel no. 1\tdj\_engel\_1hd.db  
 Dataset Pathname: dil\tdistck  
 Presentation Format: dil  
 Dataset Creation: Mon Sep 12 19:32:58 2011  
 Charted by: Depth in Feet scaled 1:240

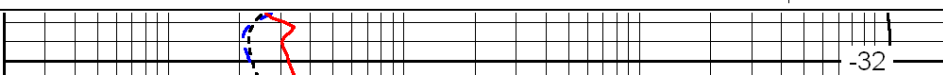
0	Gamma Ray	150
-200	SP (mV)	0
-160	Rxo / Rt	40

0.2	Deep Resistivity	2000
0.2	Medium Resistivity	2000
0.2	Shallow Resistivity	2000
15000	Line Tension	0

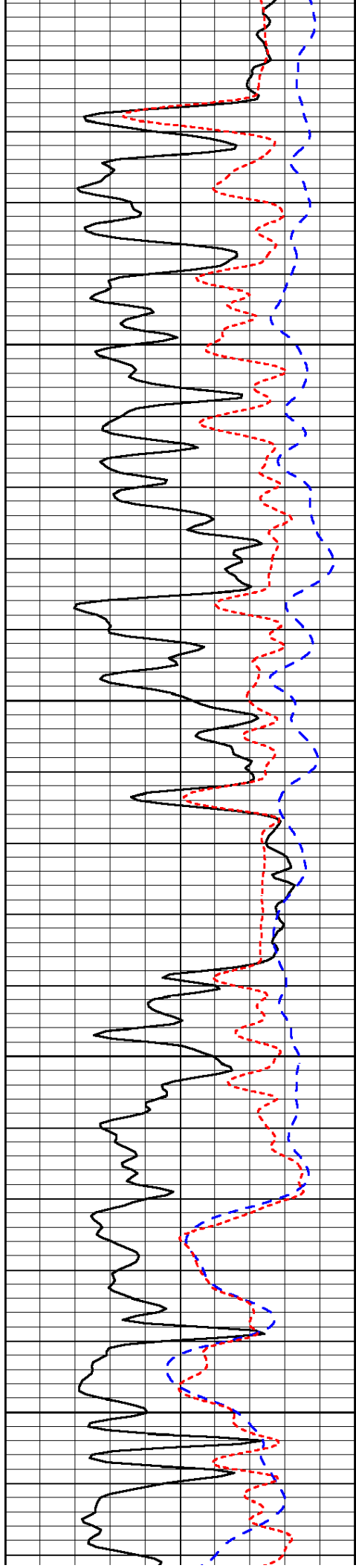
LSPD



2800



-32

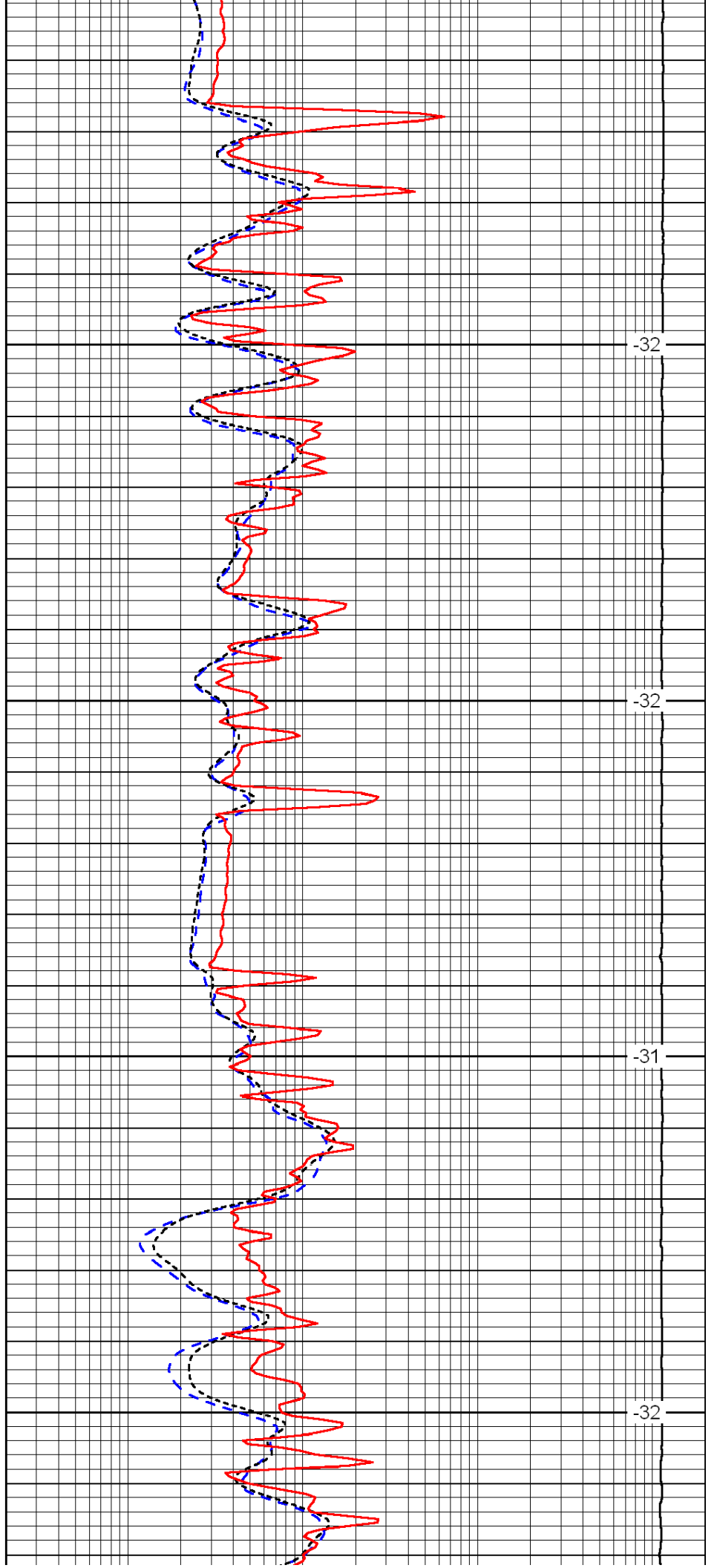


2850

2900

2950

3000

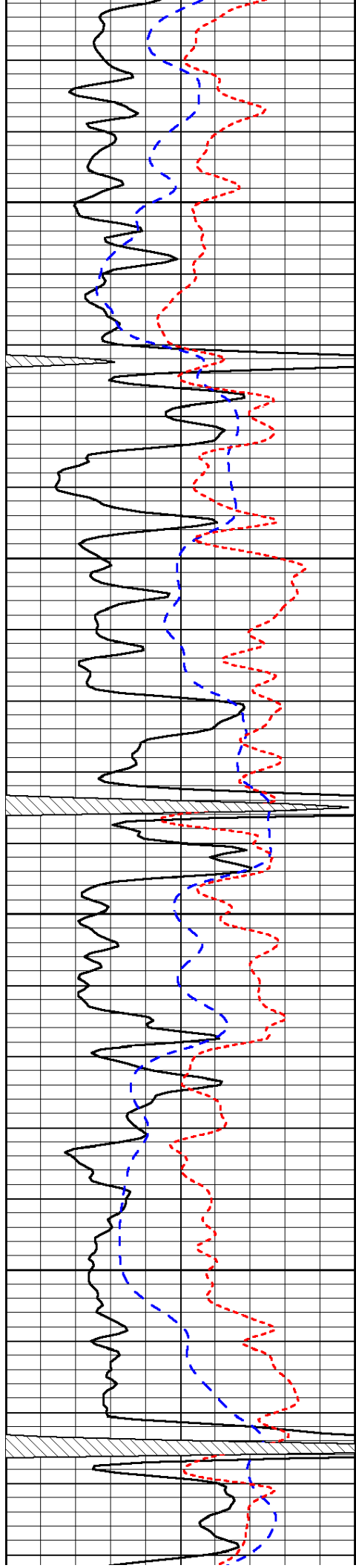


-32

-32

-31

-32

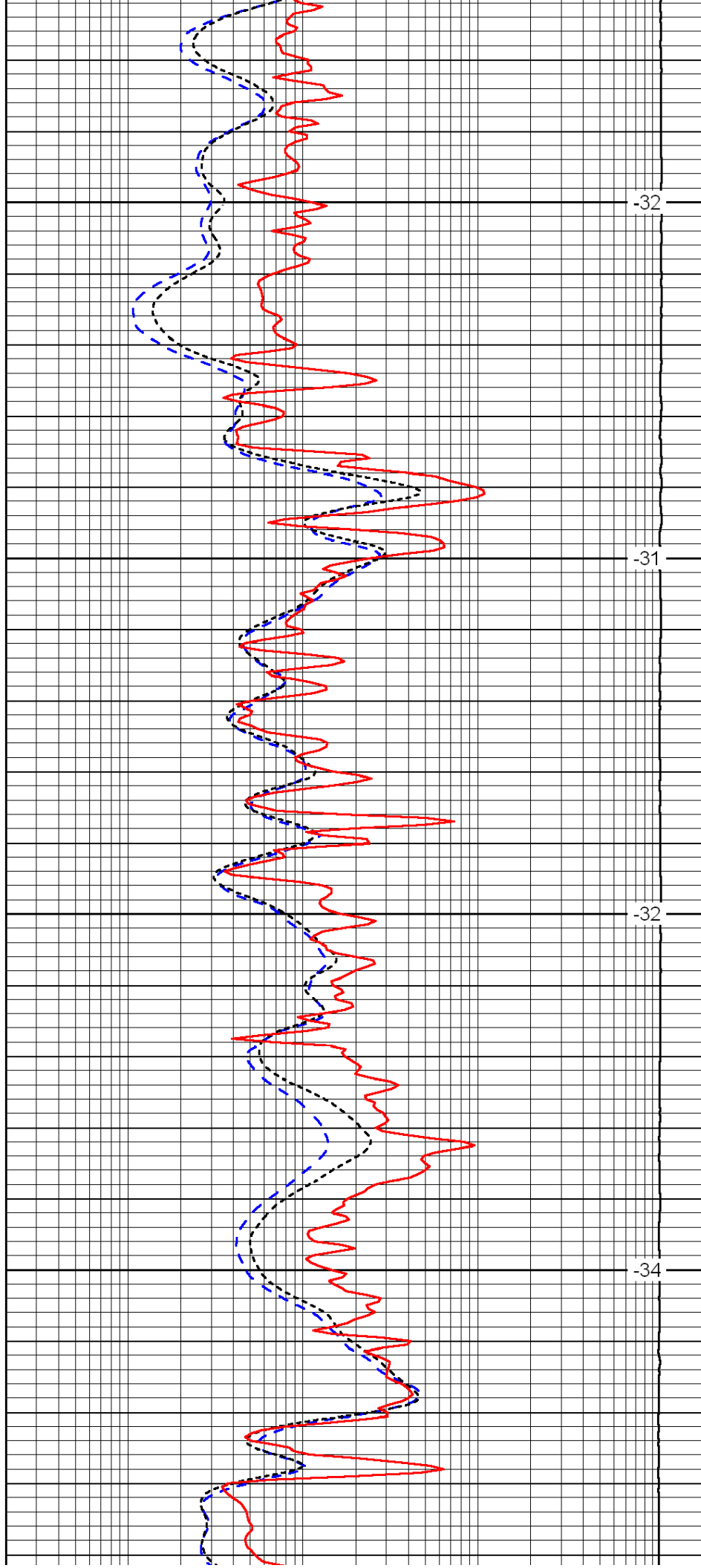


3050

3100

3150

3200

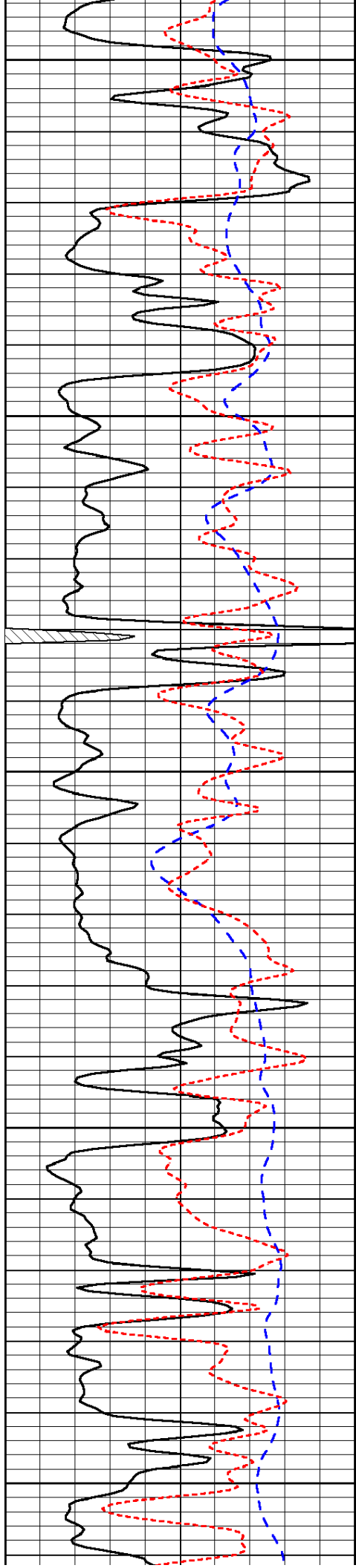


-32

-31

-32

-34



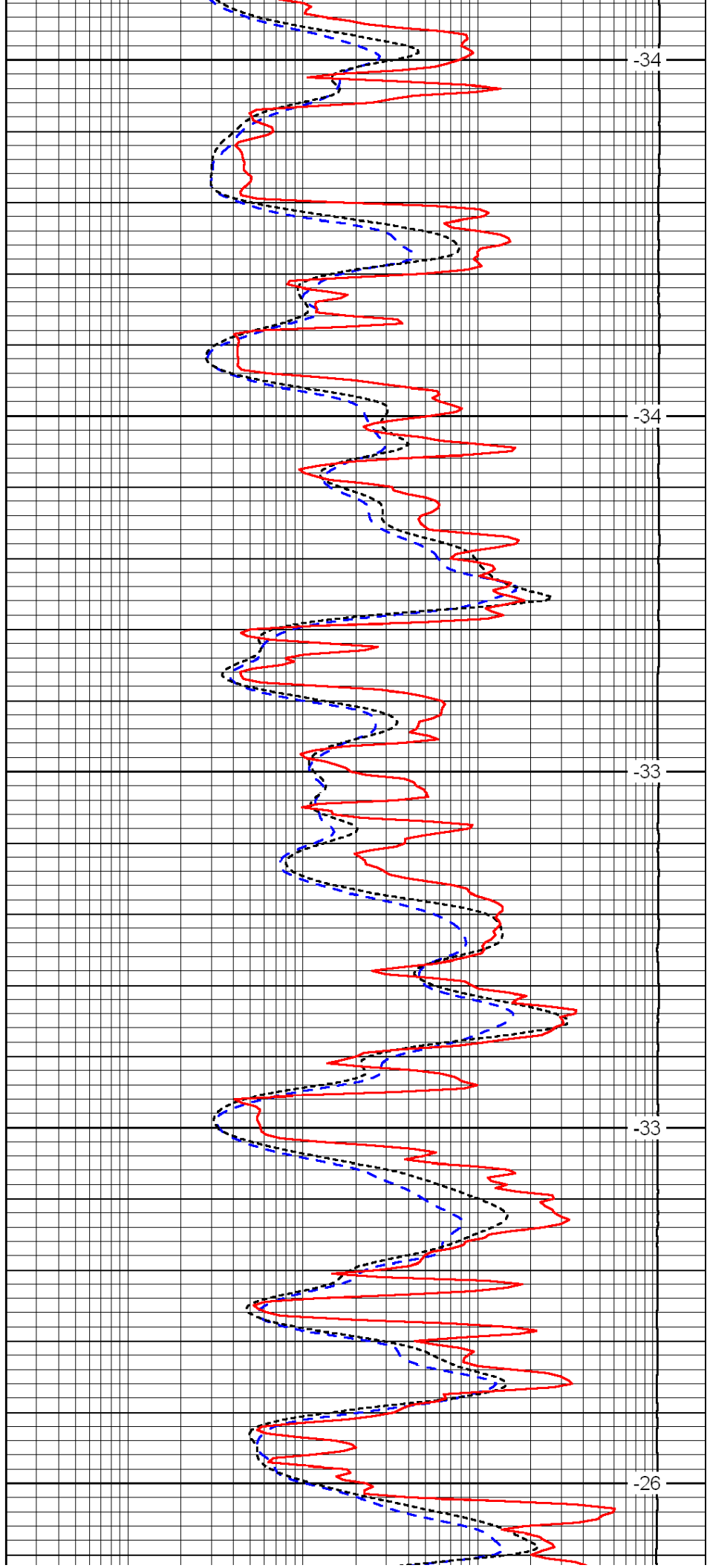
3250

3300

3350

3400

3450



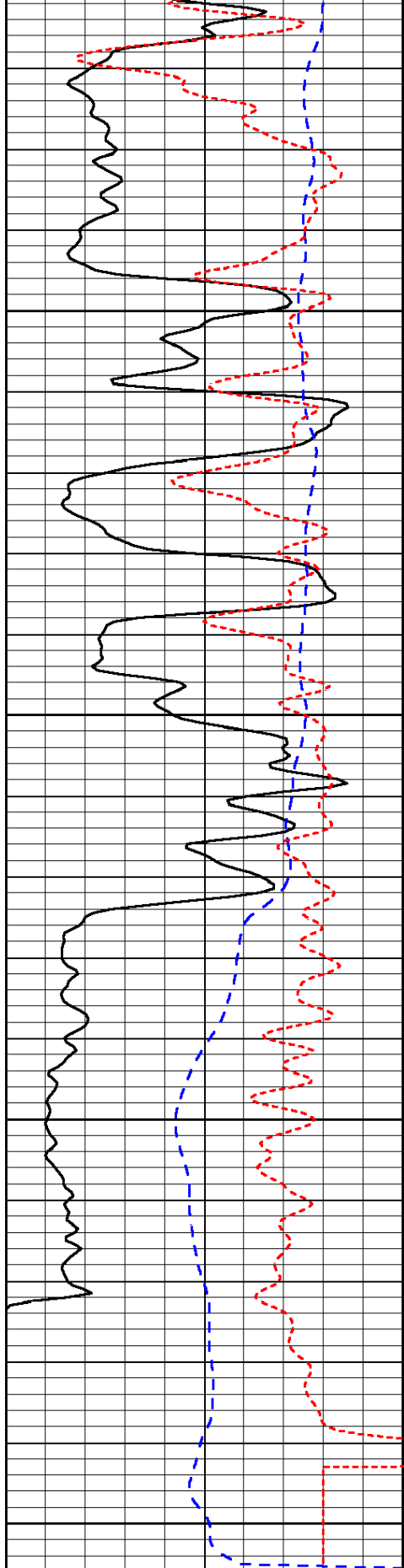
-34

-34

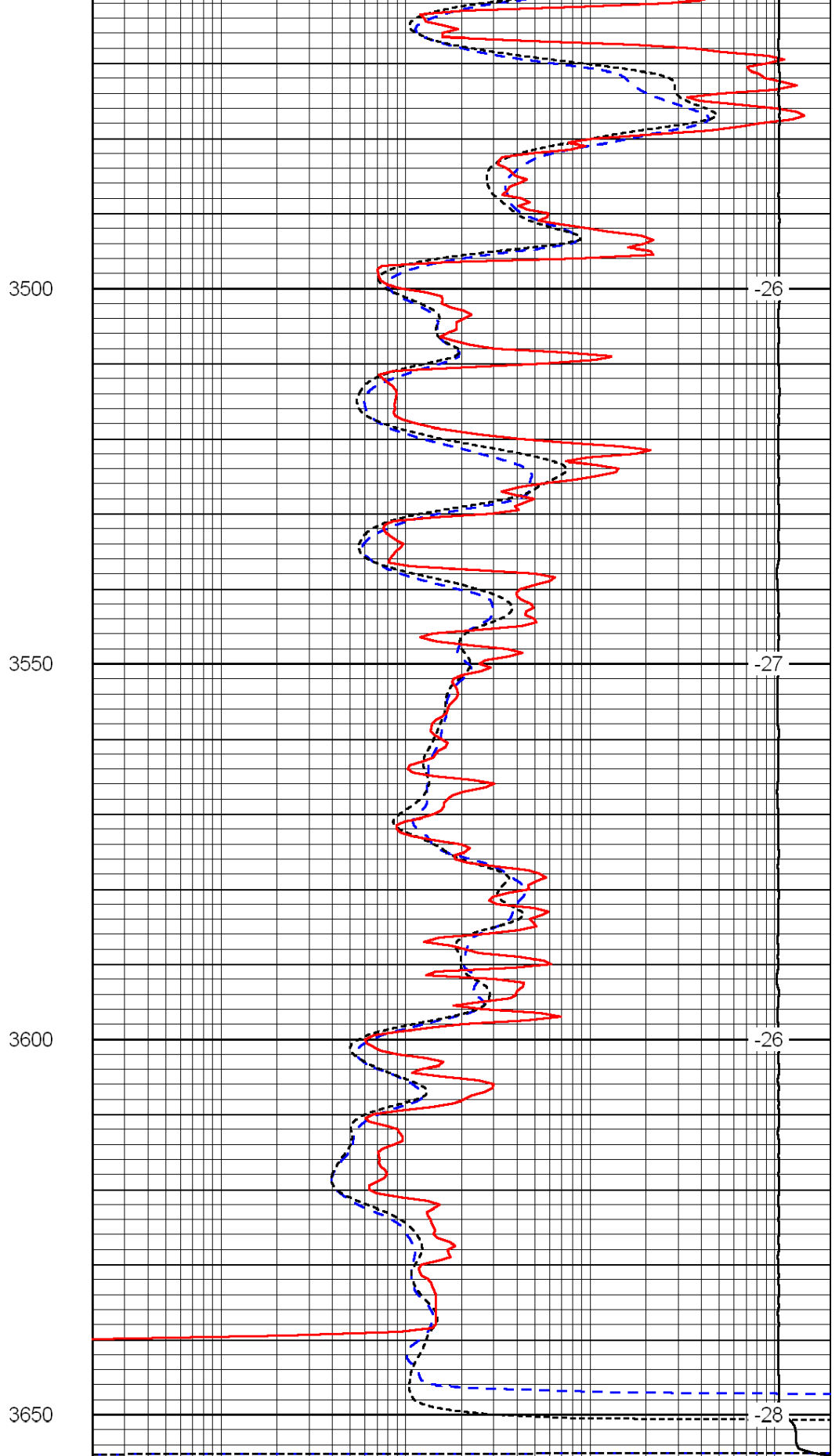
-33

-33

-26



0	Gamma Ray	150
-200	SP (mV)	0
-160	Rxo / Rt	40



0.2	Deep Resistivity	2000
0.2	Medium Resistivity	2000
0.2	Shallow Resistivity	2000
15000	Line Tension	0

LSPD