



Microresistivity Log

DIGITAL LOG (785) 625-3858

15-051-26,174-00-00

API No.

Company **TDI, Inc.**
 Well **Engel No. 1**
 Field **Schoenchen**
 County **Ellis** State **Kansas**

Location **SE NE SW SE
780' FSL & 1,540' FEL**

Sec: **21** Twp: **15S** Rge: **18W**

Other Services
CNL/CDL
DIL

Permanent Datum **Ground Level** Elevation **1988**
 Log Measured From **Kelly Bushing** 10 Ft. Above Perm. Datum
 Drilling Measured From **Kelly Bushing**

Elevation
K.B. 1998
D.F. 1988
G.L. 1988

Date	9/12/2011
Run Number	Two
Depth Driller	3650
Depth Logger	3650
Bottom Logged Interval	3649
Top Log Interval	2800
Casing Driller	8.625 @ 1147
Casing Logger	1145
Bit Size	7.875
Type Fluid in Hole	Chemical
Salinity, ppm CL	3000
Density / Viscosity	9.2 58
pH / Fluid Loss	10.5 6.4
Source of Sample	Flowline
Rm @ Meas. Temp	.48 @ 84
Rmf @ Meas. Temp	.36 @ 84
Rmc @ Meas. Temp	.65 @ 84
Source of Rmf / Rmc	Charts
Rm @ BHT	.36 @ 113
Operating Rig Time	4 Hours
Max Rec. Temp. F	113
Equipment Number	10
Location	Hays
Recorded By	J. Long
Witnessed By	Herb Deines

<<< Fold Here >>>

All interpretations are opinions based on inferences from electrical or other measurements and we cannot and do not guarantee the accuracy or correctness of any interpretation, and we shall not, except in the case of gross or willful negligence on our part, be liable or responsible for any loss, costs, damages, or expenses incurred or sustained by anyone resulting from any interpretation made by any of our officers, agents or employees. These interpretations are also subject to our general terms and conditions set out in our current Price Schedule.

Comments

Thank you for using Log-Tech, Inc.
(785) 625-3858

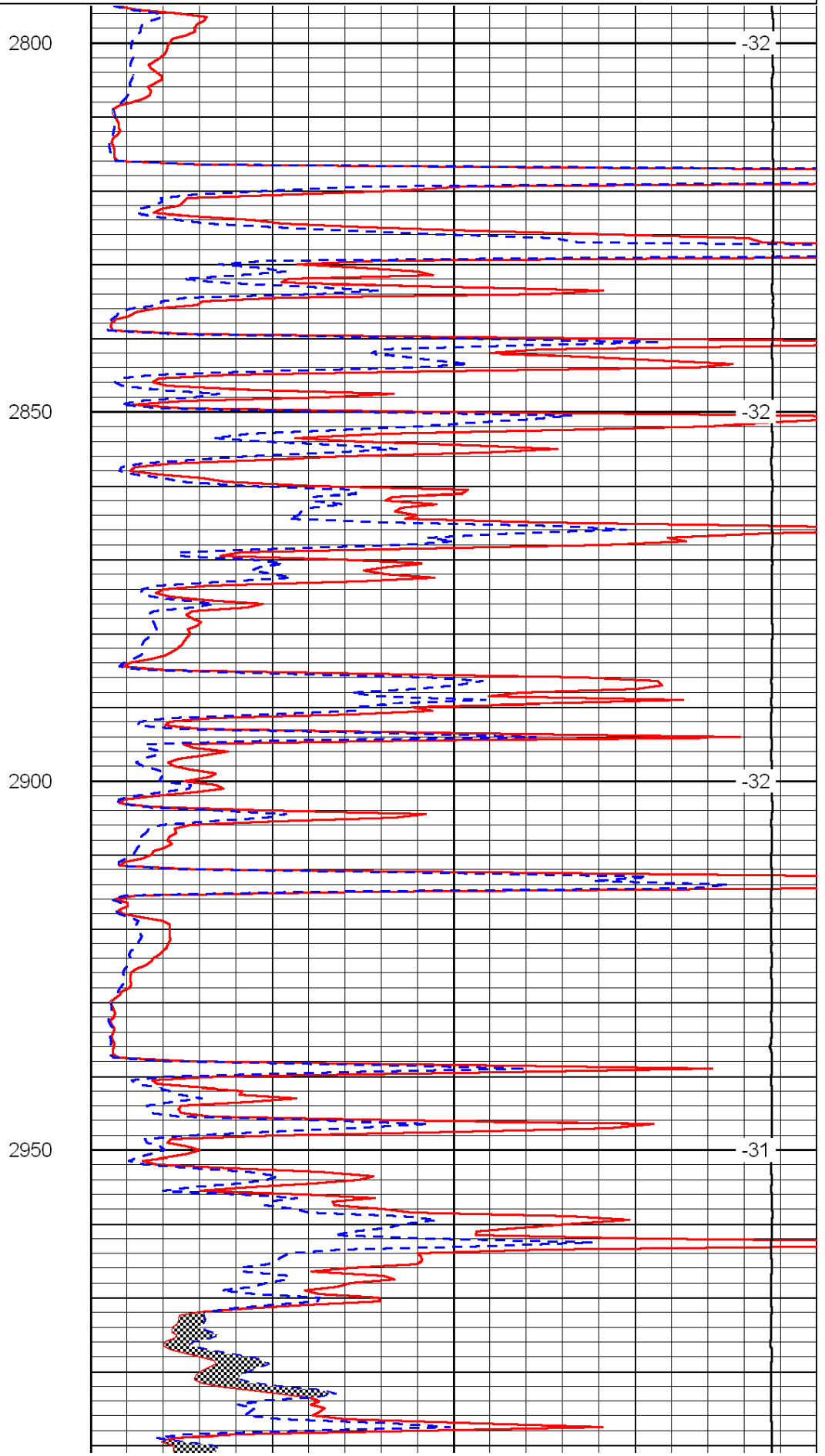
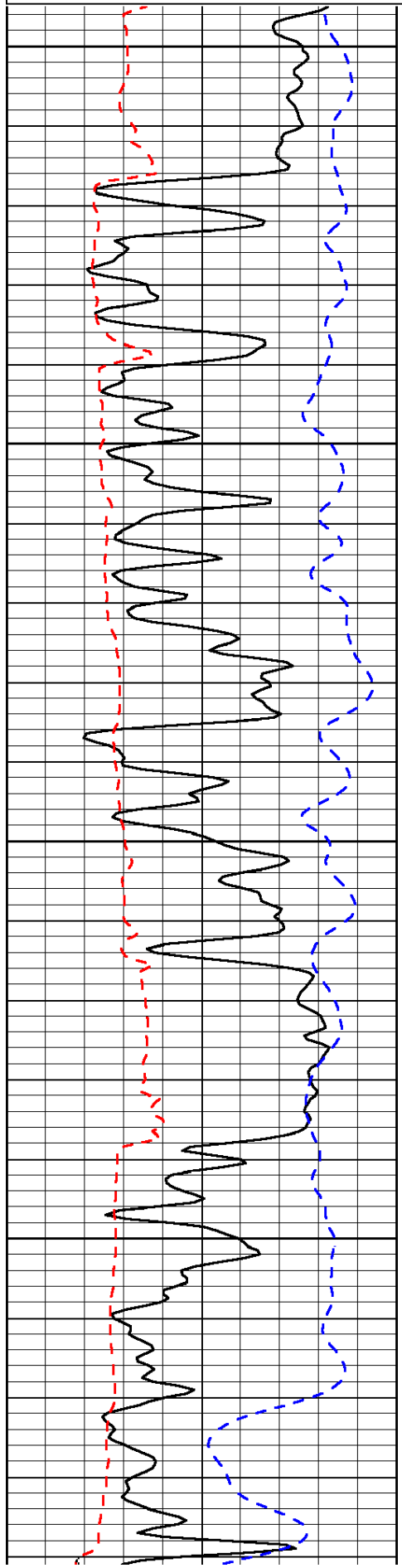
Hays, 9 South to Smoky Hill River Road, 1/4 West, North Into

Database File: c:\warrior\data\tdi_engel no. 1\tdi_engel_1hd.db
 Dataset Pathname: dil/tdistck
 Presentation Format: micro
 Dataset Creation: Mon Sep 12 19:32:58 2011
 Charted by: Depth in Feet scaled 1:240

0	Gamma Ray	150
6	Micro Log Caliper (GAPI)	16
-200	SP (mV)	0

0	Micro Inverse 1 X 1	40
0	Micro Normal 2"	40
15000	Line Weight	0

LSPD



2800

-32

2850

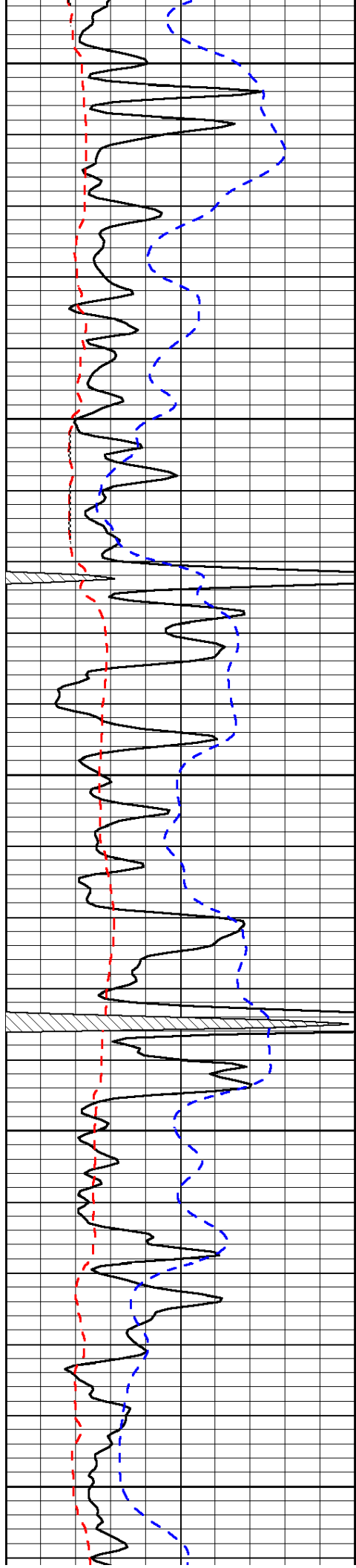
-32

2900

-32

2950

-31



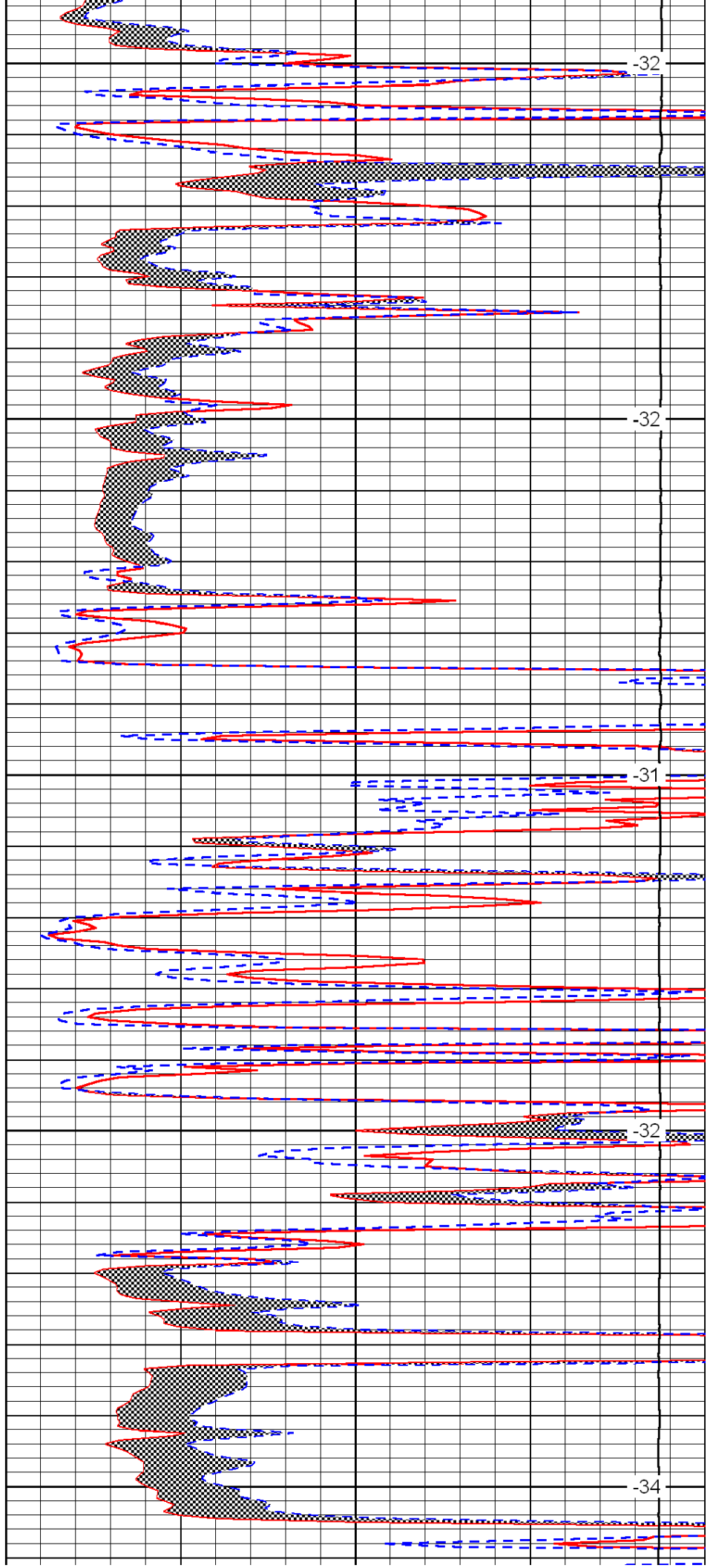
3000

3050

3100

3150

3200



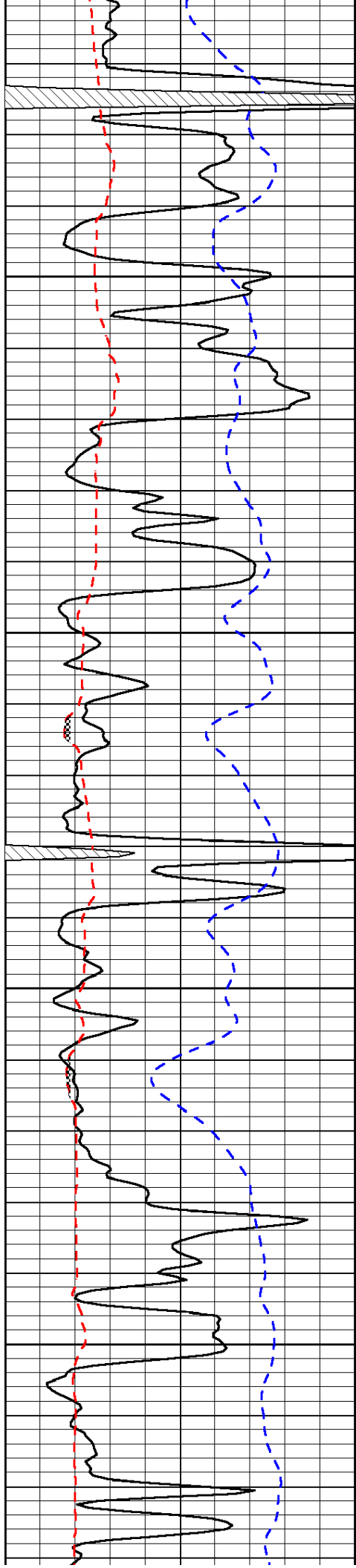
-32

-32

-31

-32

-34

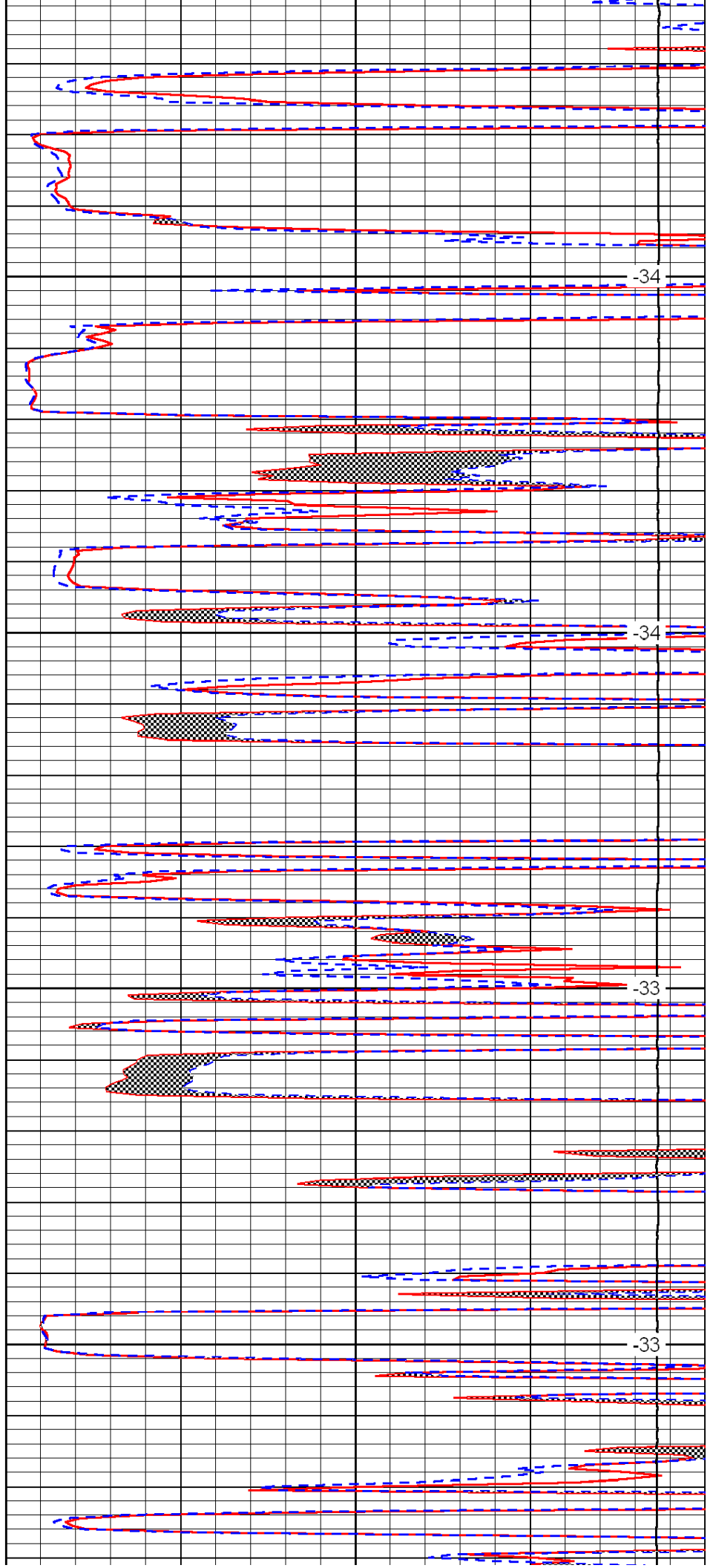


3250

3300

3350

3400

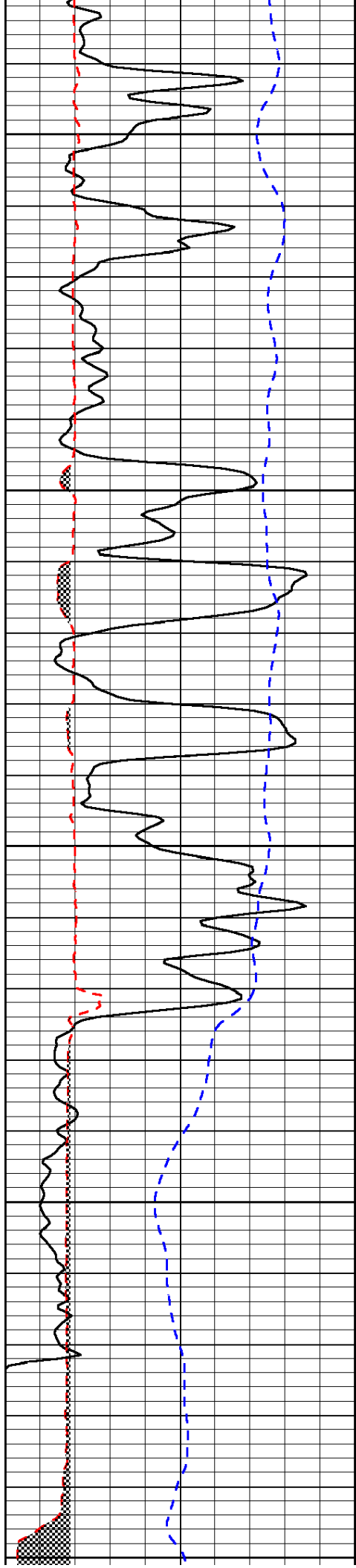


-34

-34

-33

-33



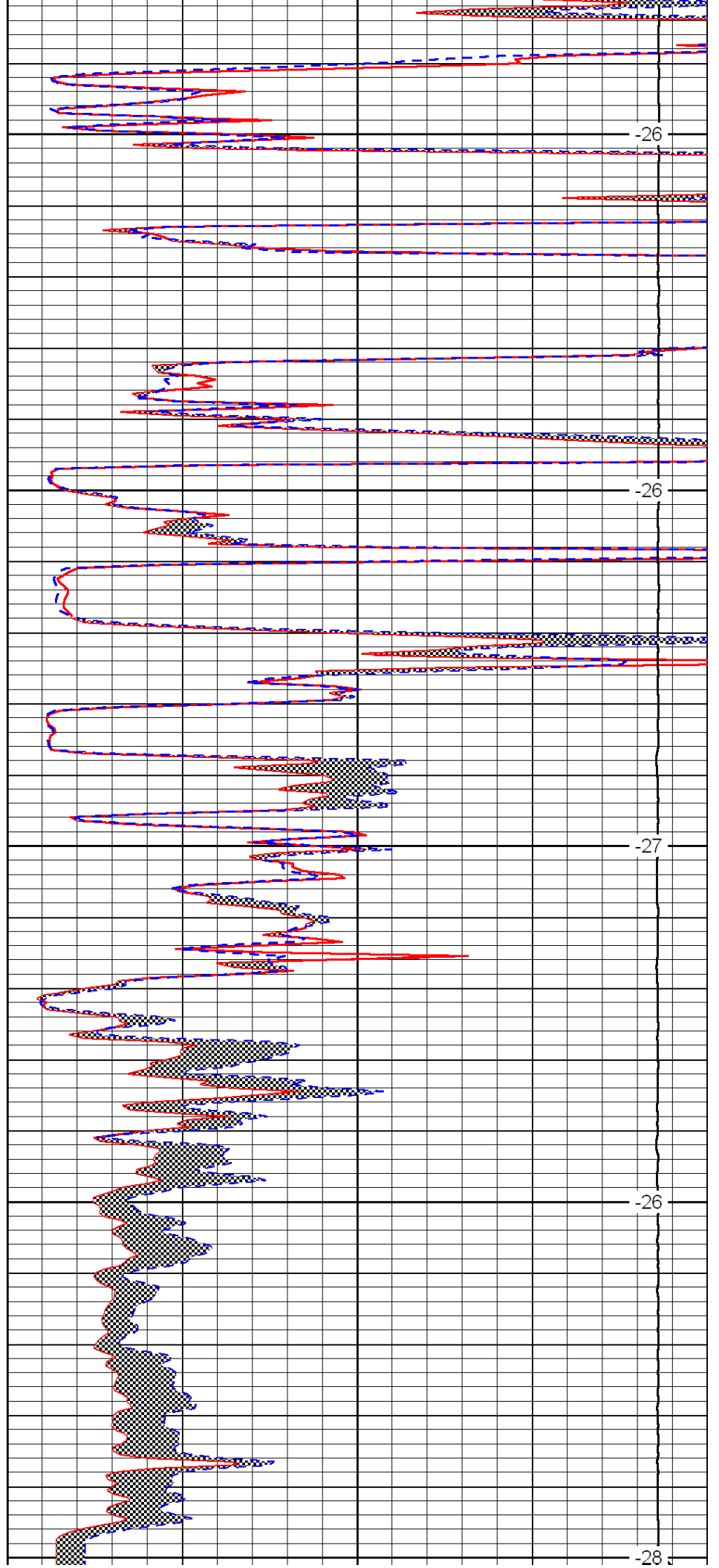
3450

3500

3550

3600

3650



-26

-26

-27

-26

-28

0	Gamma Ray	150
6	Micro Log Caliper (GAPI)	16
-200	SP (mV)	0

0	Micro Inverse 1 X 1	40
0	Micro Normal 2"	40
15000	Line Weight	0

LSPD