



DIGITAL LOG (785) 625-3858

Borehole Compensated  
Sonic Log

API No. 15-083-21,722-00-00

Company: Norstar Petroleum, Inc.  
Well: Phillips-Denny No. 1-4  
Field: Fossil Ridge  
County: Hodgeman  
State: Kansas

Location: SE NW NE  
1046' FNL & 1777' FEL

Sec: 4 Twp: 22 S Rge: 23 W

Other Services: CNL/CDL MEL/DIL

Permanent Datum: Ground Level Elevation 2302  
Log Measured From: Kelly Bushing 5 Ft. Above Perm. Datum  
Drilling Measured From: Kelly Bushing

K.B. 2307  
D.F. G.L. 2302

Date: 8/28/2011

Run Number: Two

Type Log: BHC Sonic

Depth Driller: 4700

Depth Logger: 4701

Bottom Logged Interval: 4690

Top Logged Interval: 250

Type Fluid In Hole: Chemical

Salinity, PPM CL: 7,400

Density: 9.1

Level: Full

Max. Rec. Temp. F: 125

Operating Rig Time: 4 1/2 Hours

Equipment -- Location: 91 Hays

Recorded By: K.Bange

Witnessed By: Brad Rine

Borehole Record				Casing Record			
Run No.	Bit	From	To	Size	Wgt.	From	To
1	12.25	00	257	8.625	24#	00	257
2	7.875	257	4700				

<<< Fold Here >>>

All interpretations are opinions based on inferences from electrical or other measurements and we cannot and do not guarantee the accuracy or correctness of any interpretation, and we shall not, except in the case of gross or willful negligence on our part, be liable or responsible for any loss, costs, damages, or expenses incurred or sustained by anyone resulting from any interpretation made by any of our officers, agents or employees. These interpretations are also subject to our general terms and conditions set out in our current Price Schedule.

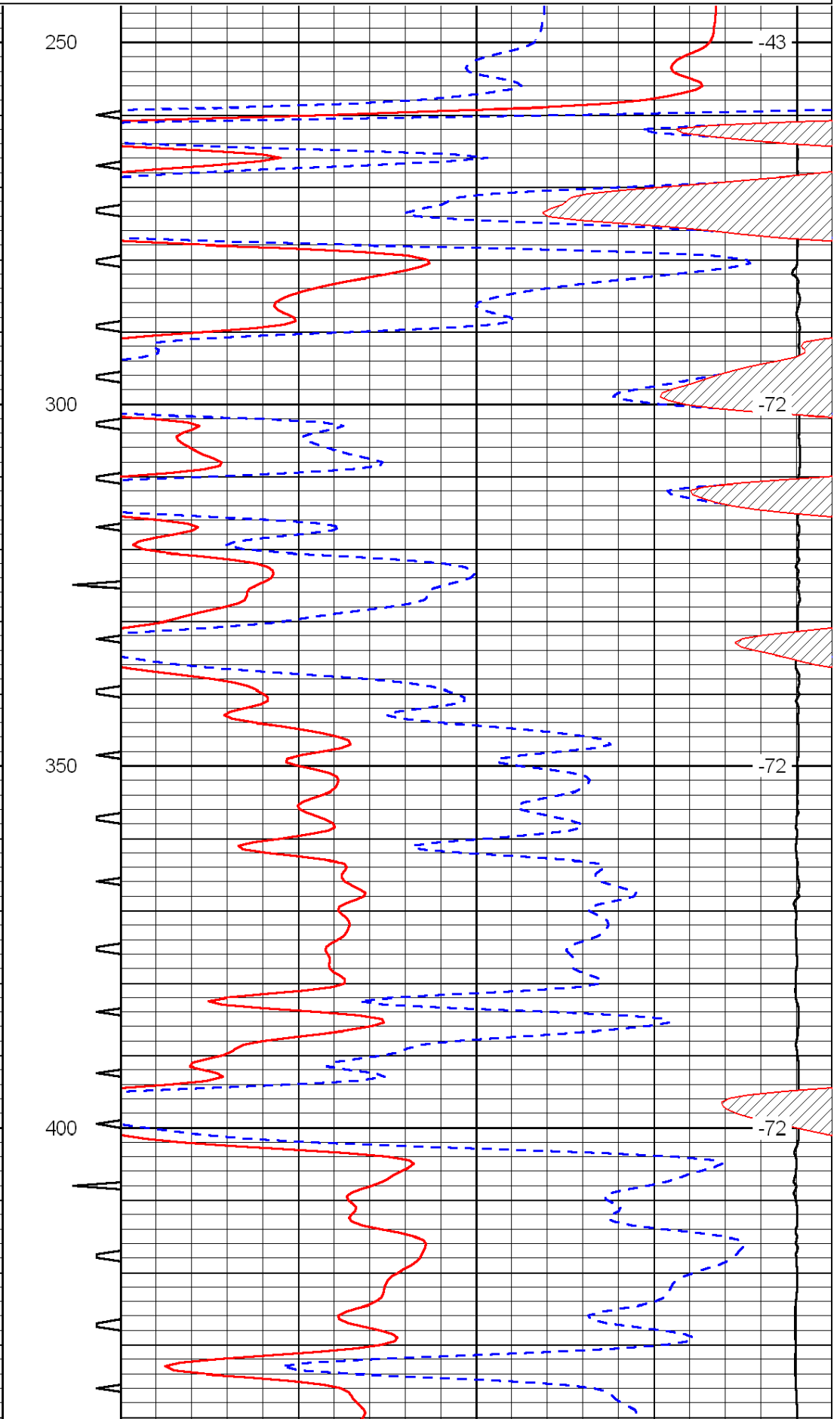
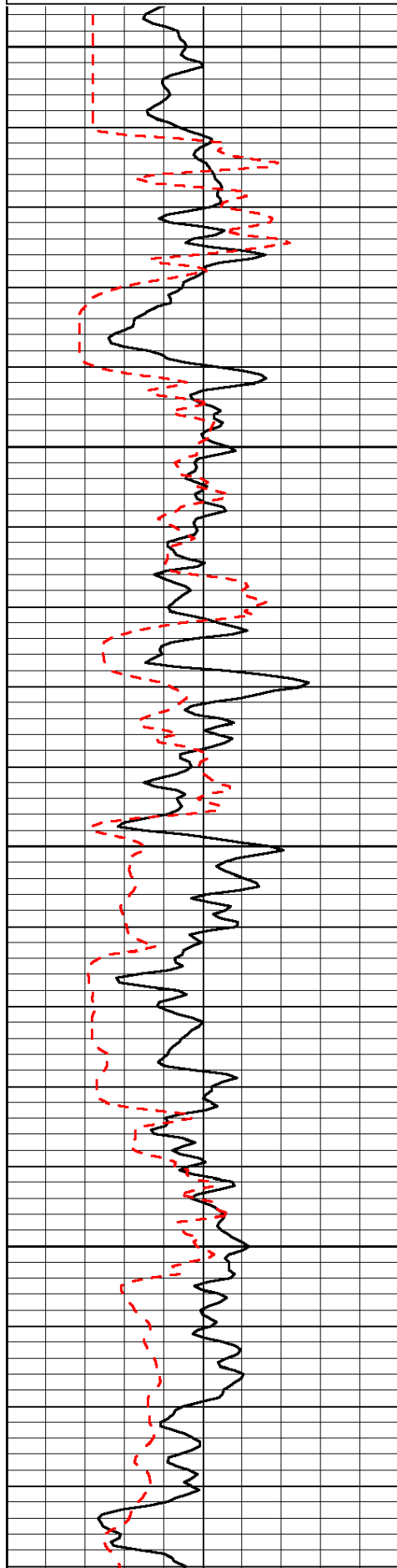
Comments

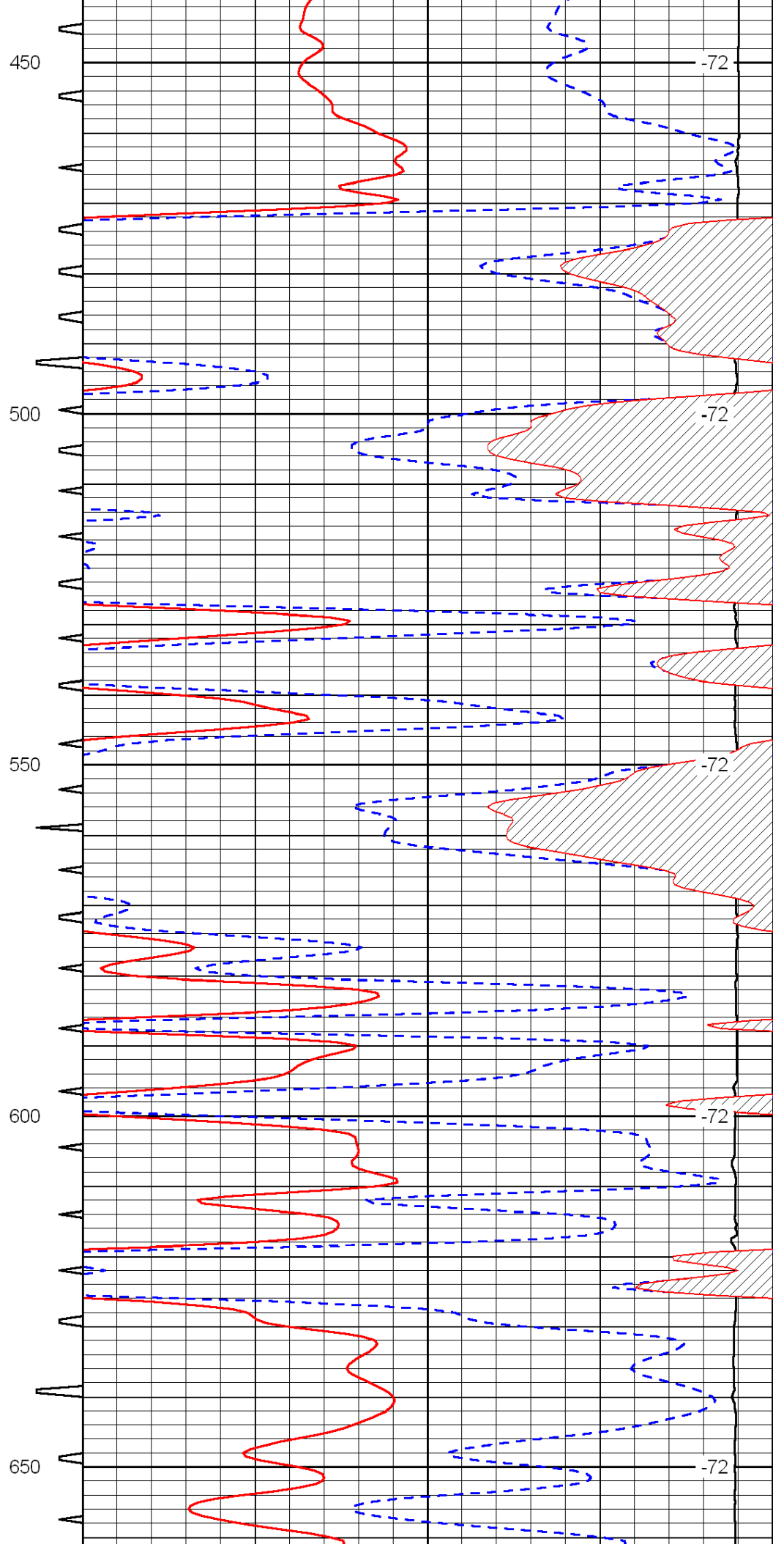
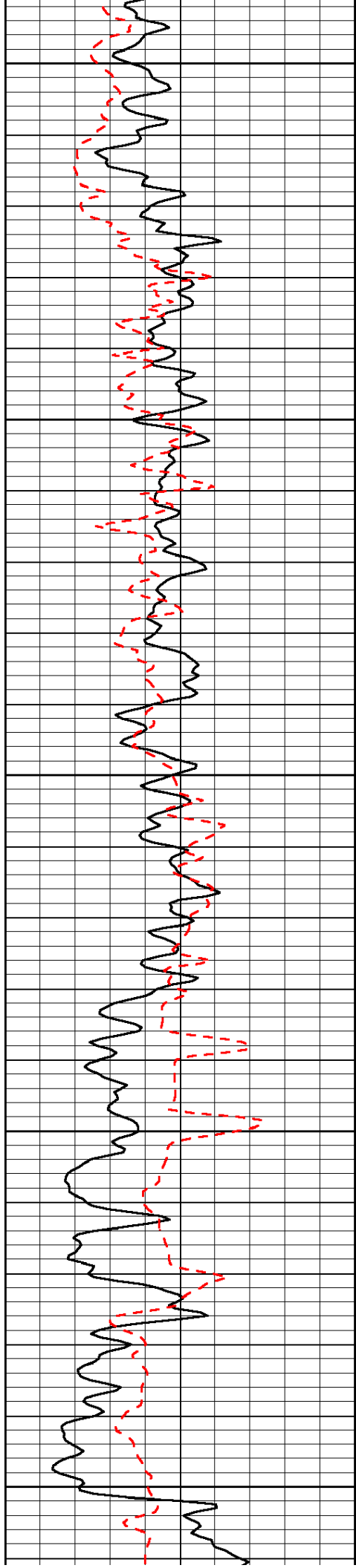
Thank you for using Log-Tech, Inc.  
(785) 625-3858

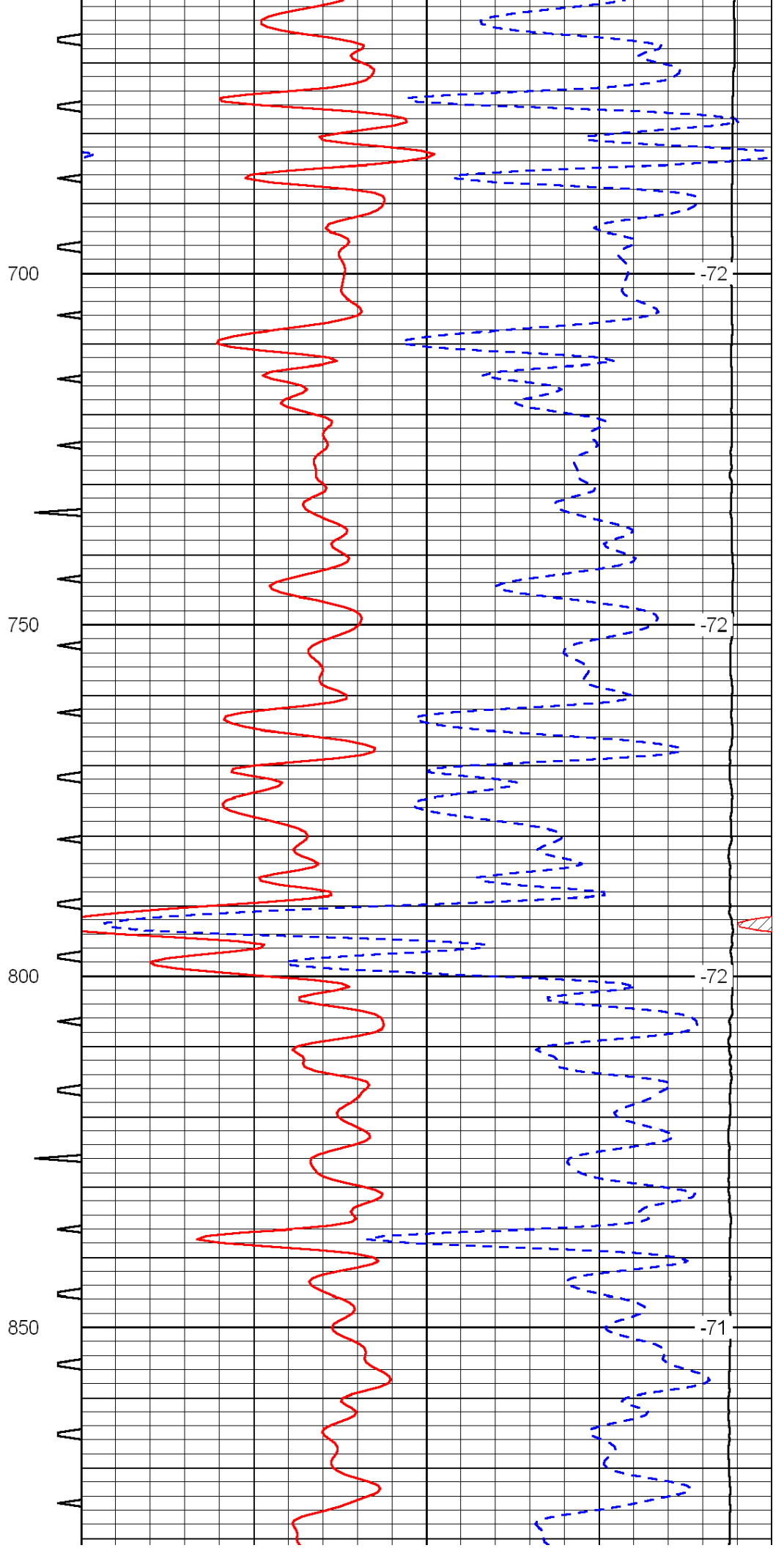
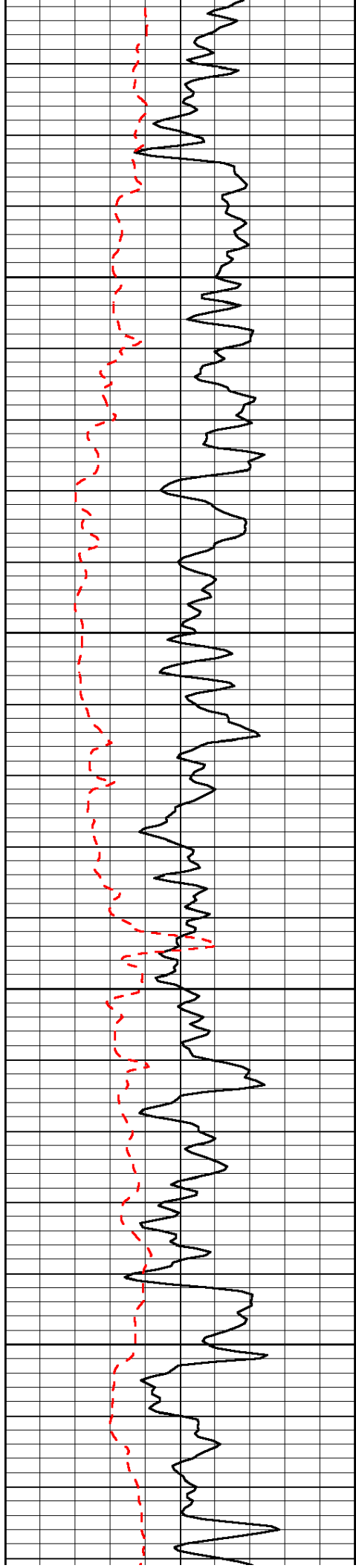
Ness City South to S Rd.  
East 2 1/2  
South into

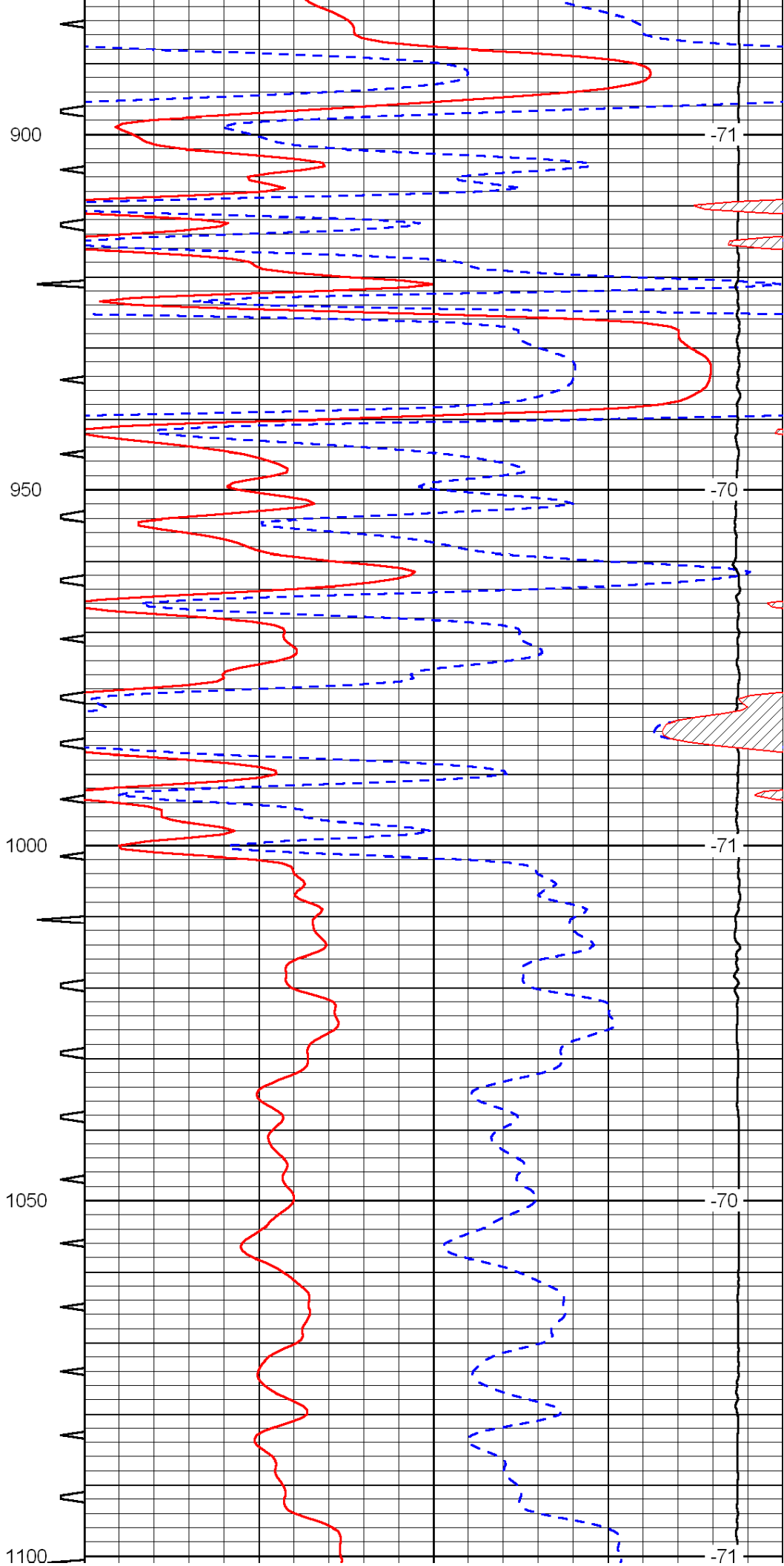
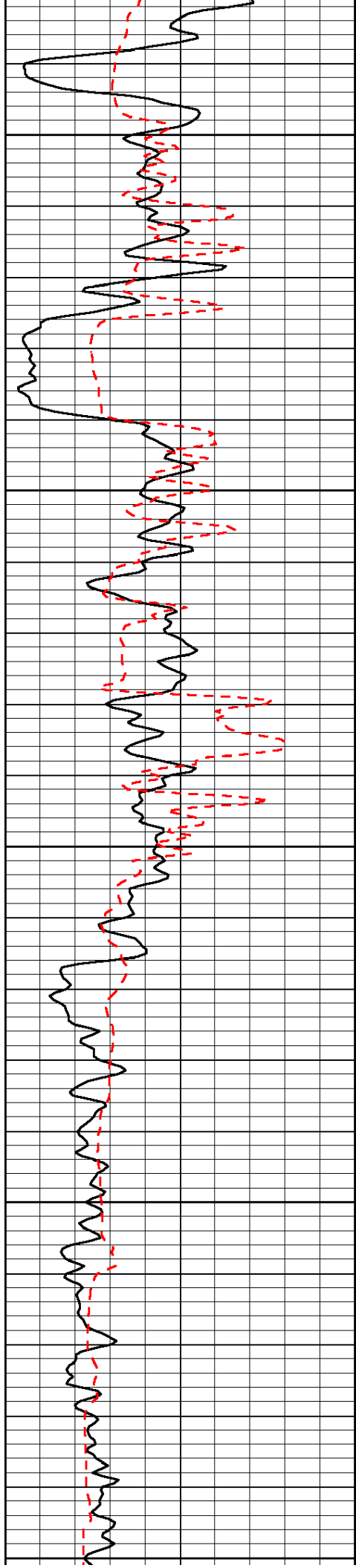
0	Gamma Ray	150	Sonic Int	140	Delta Time (usec/ft)	40
150	Gamma Ray	300	5	0	SPOR	-10
6	Caliper (GAPI)	16		15000	LTEN (lb)	0

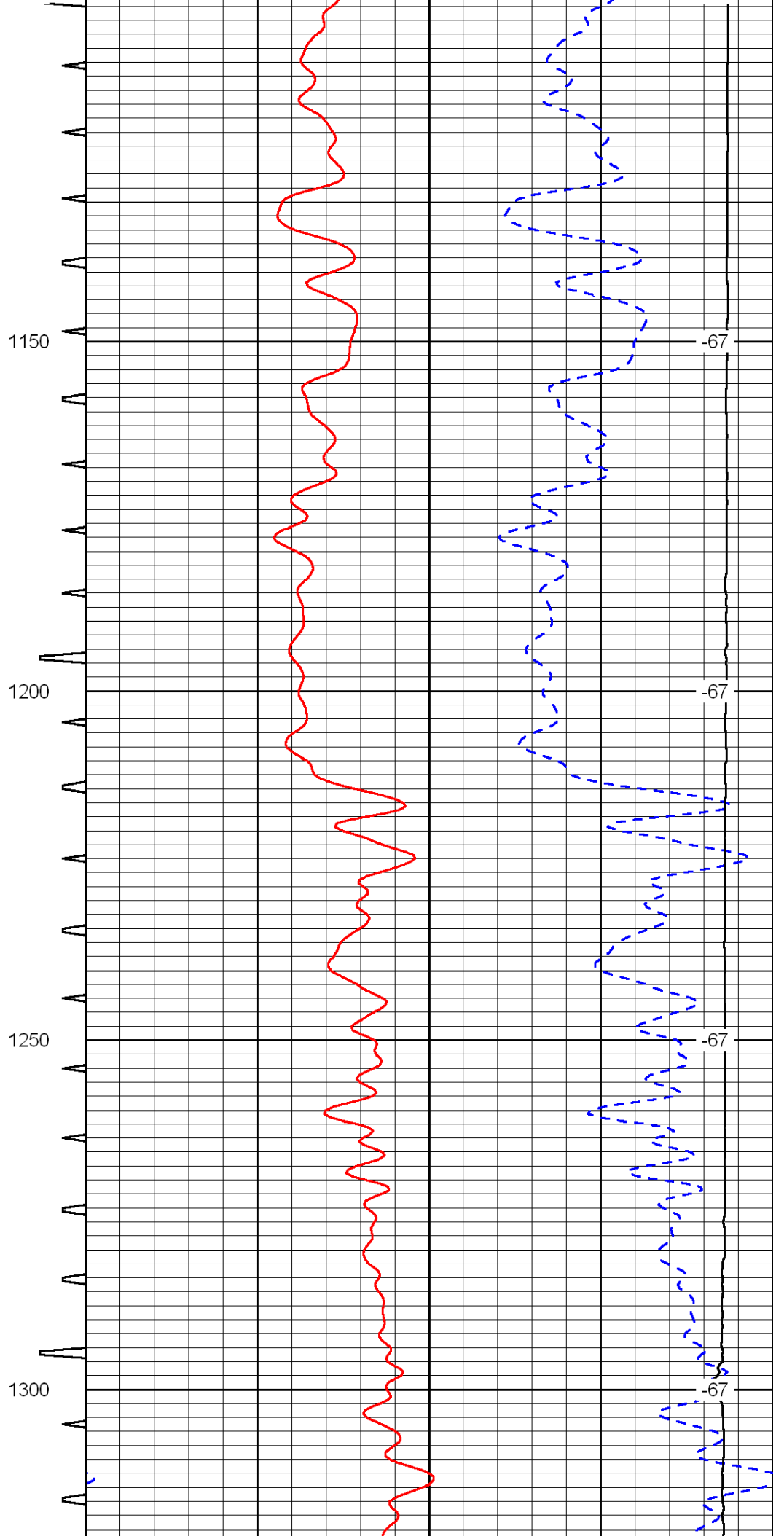
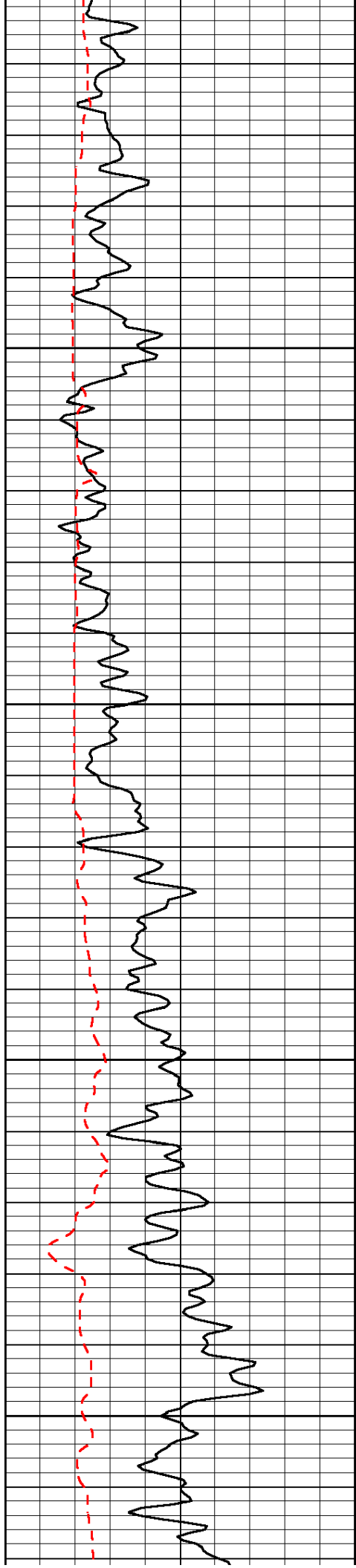
LSPD

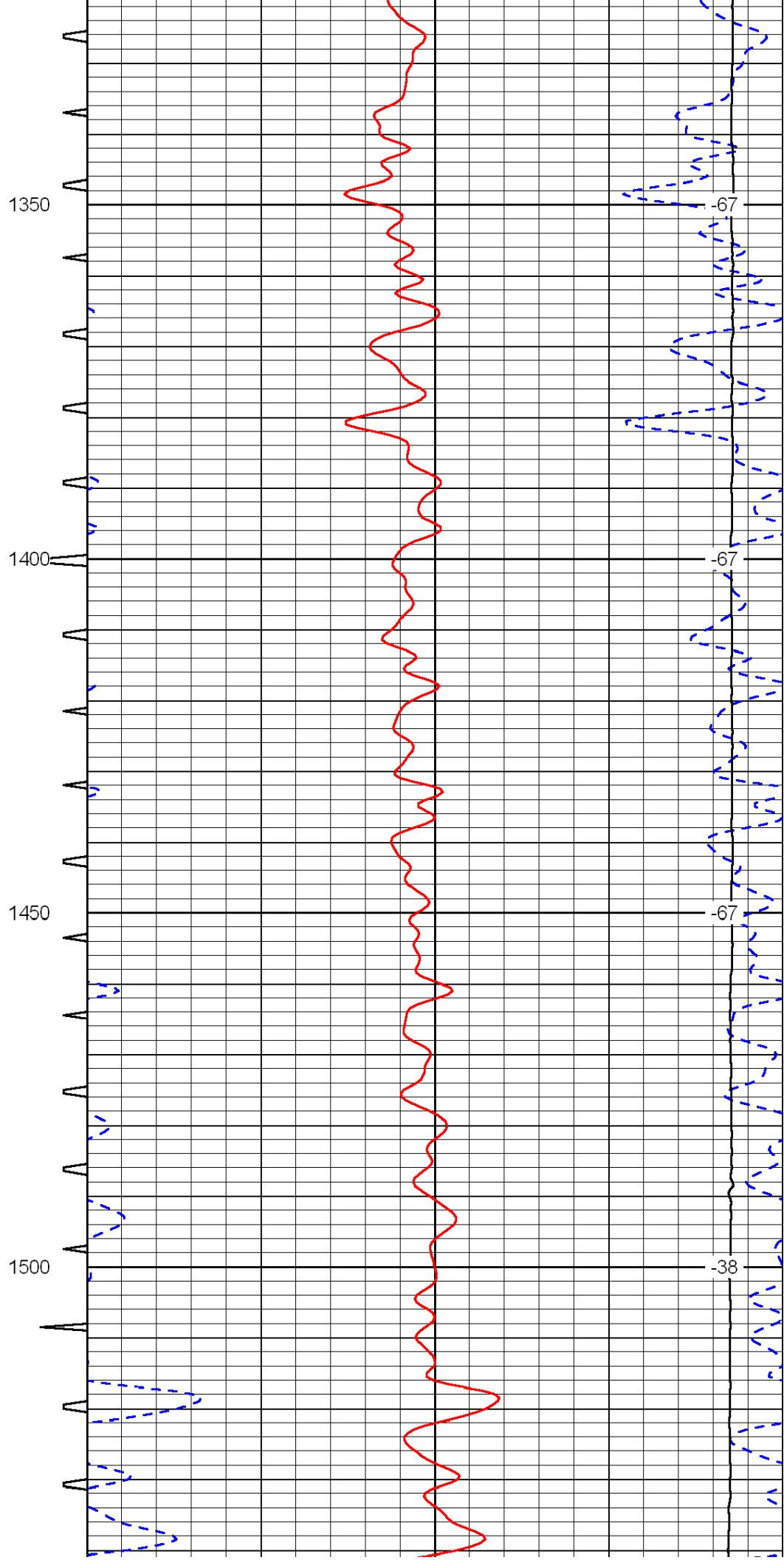
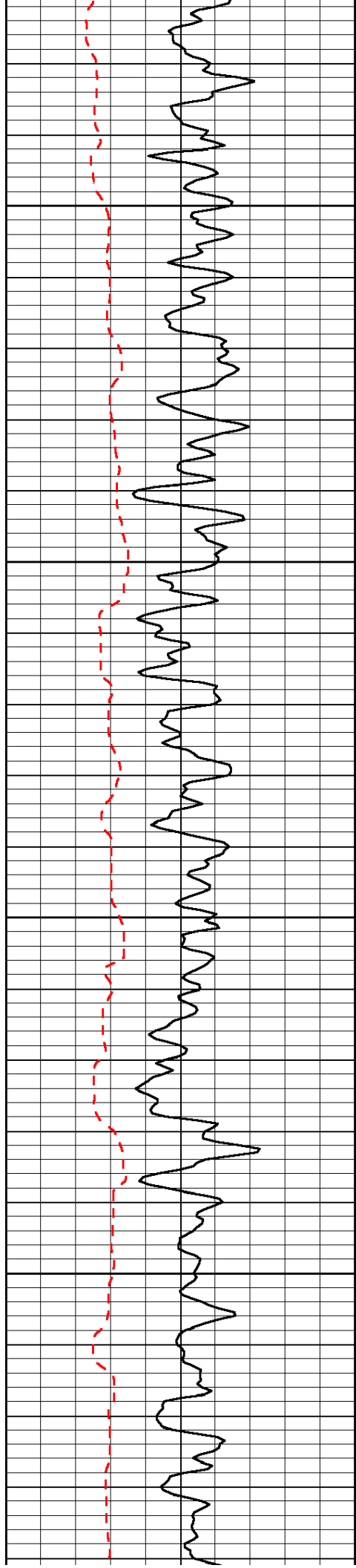


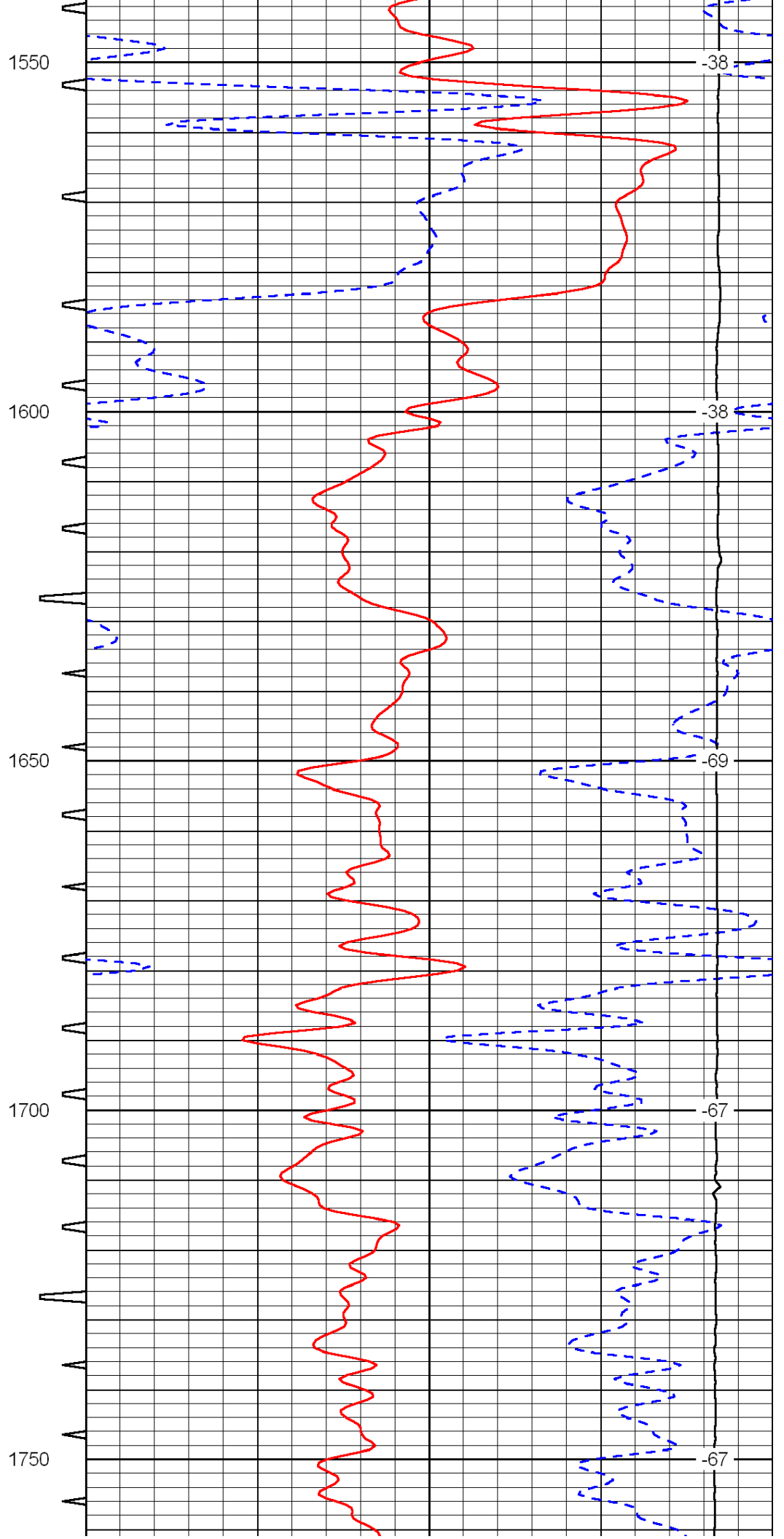
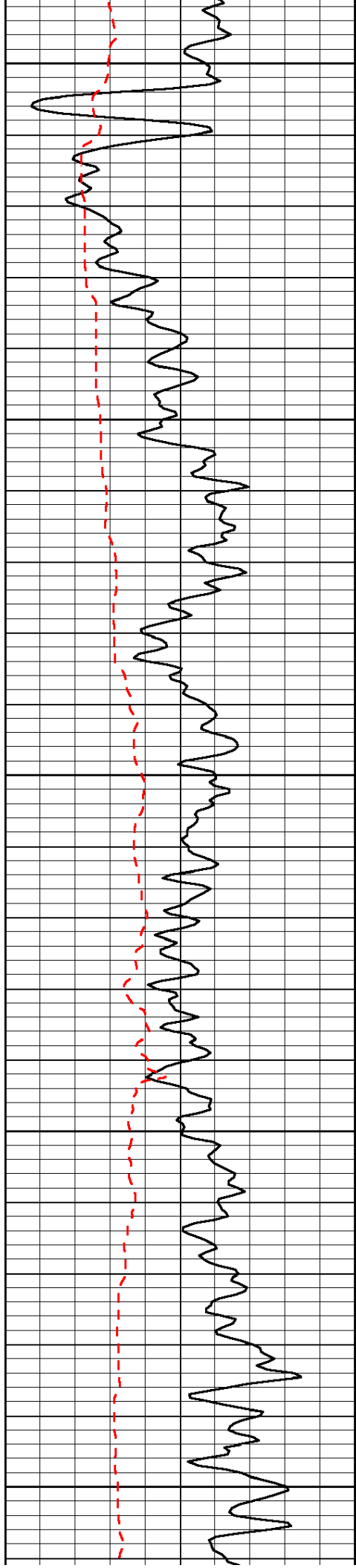


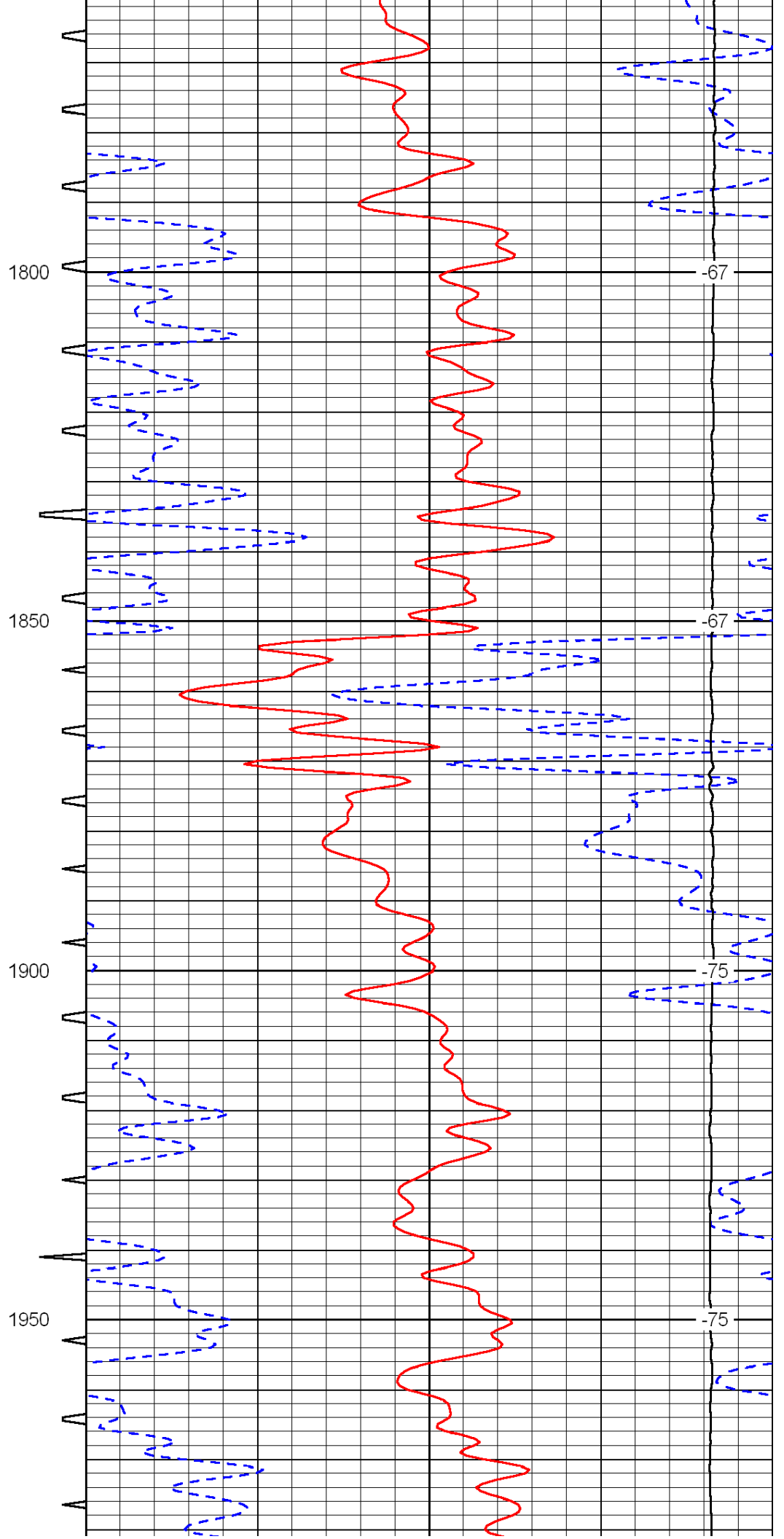
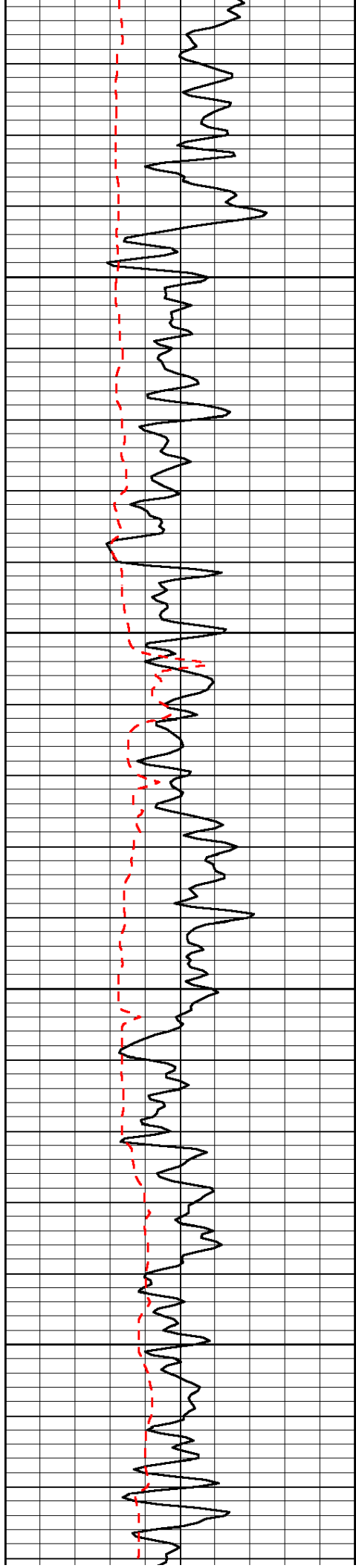


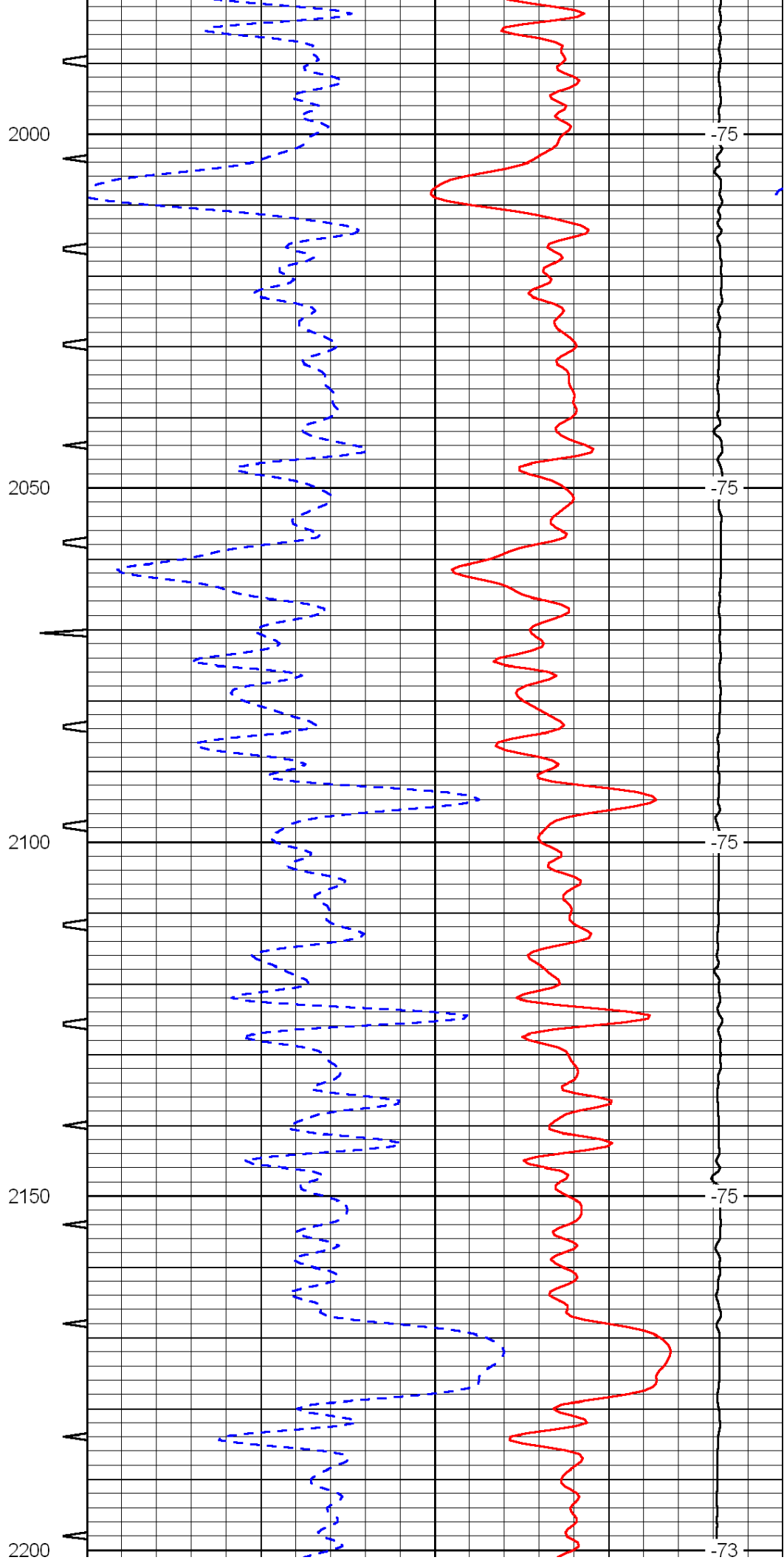
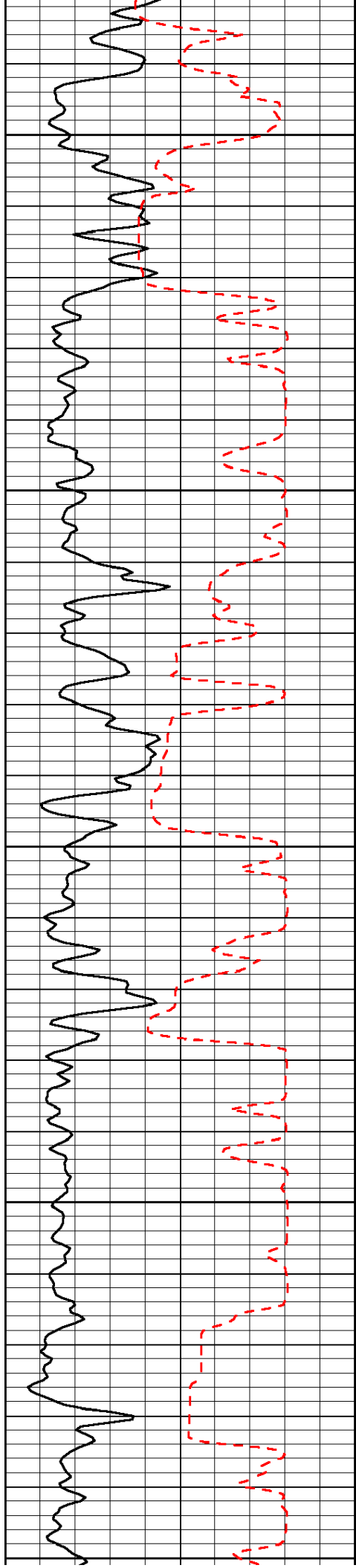


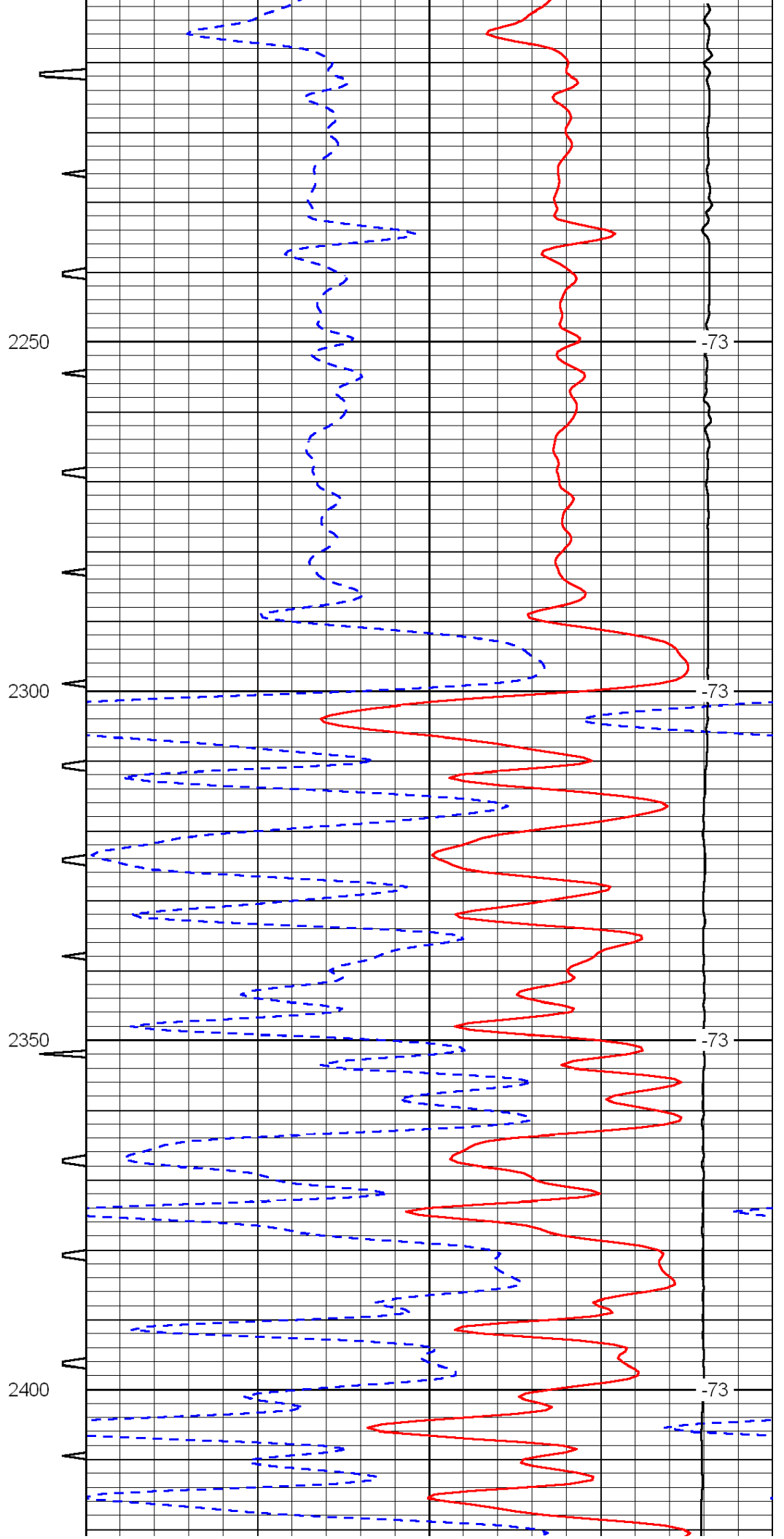
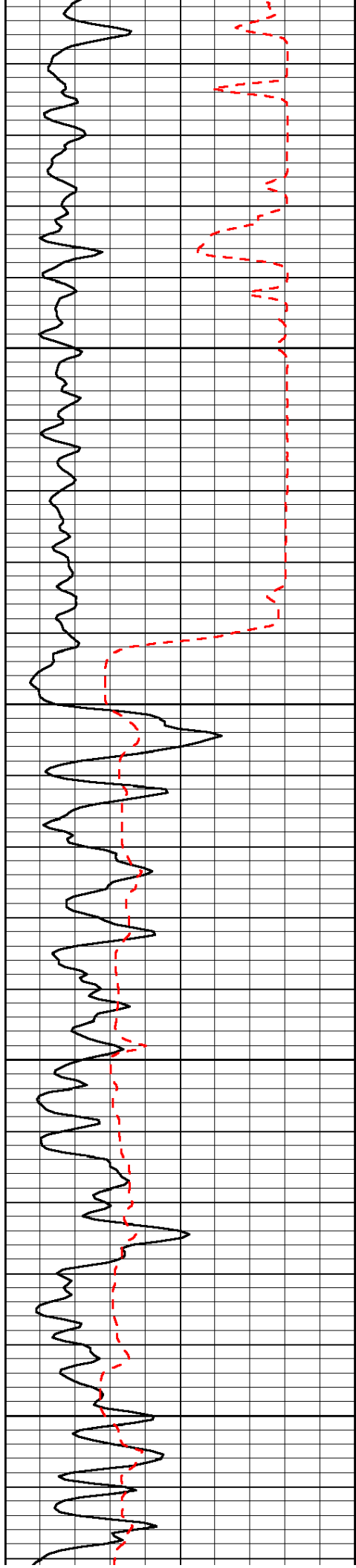


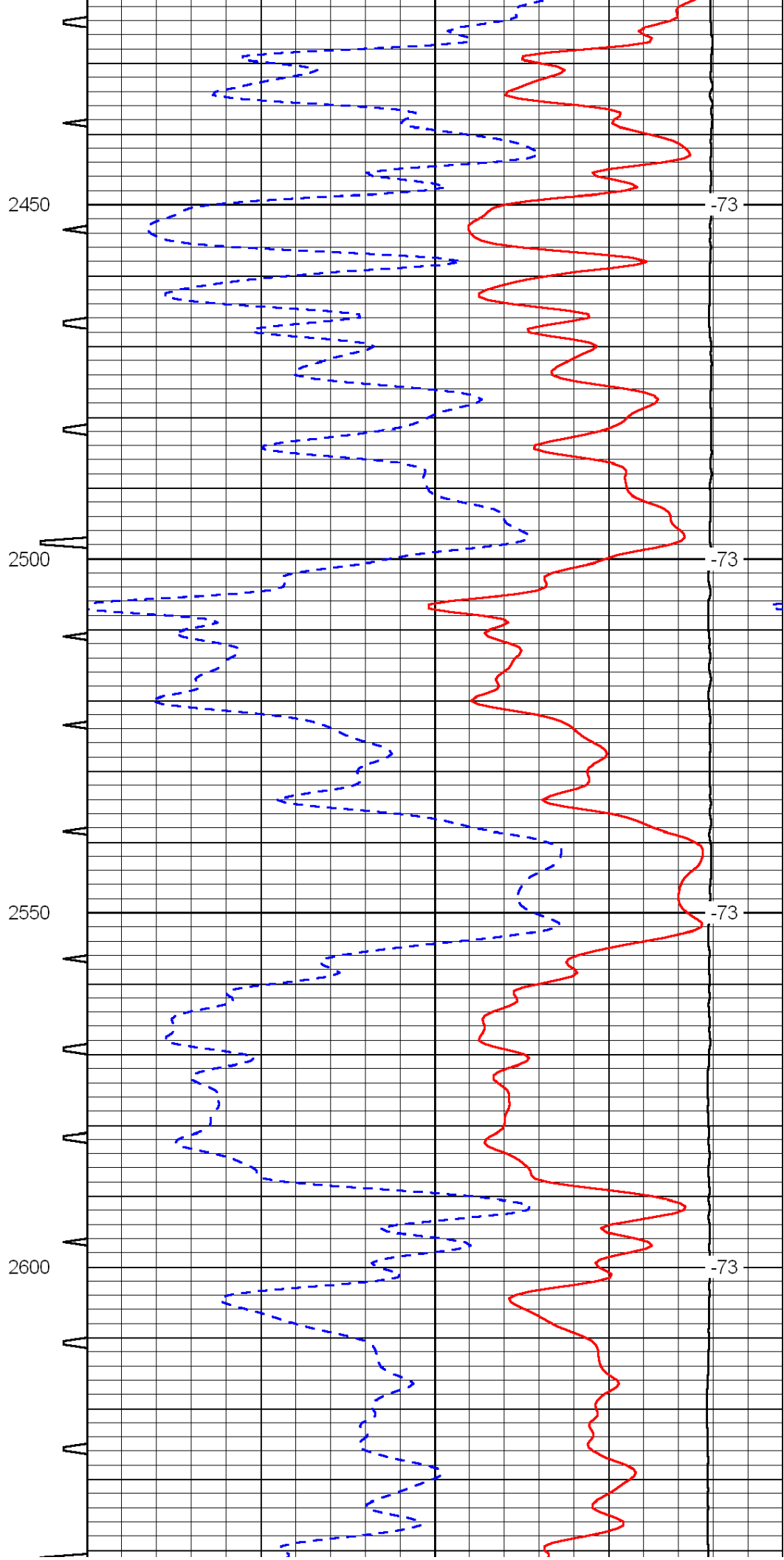
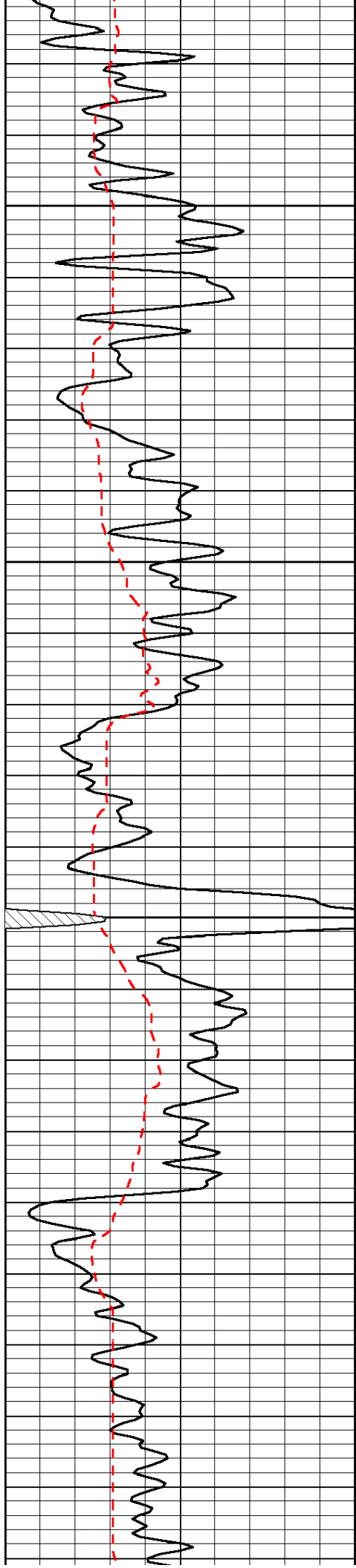


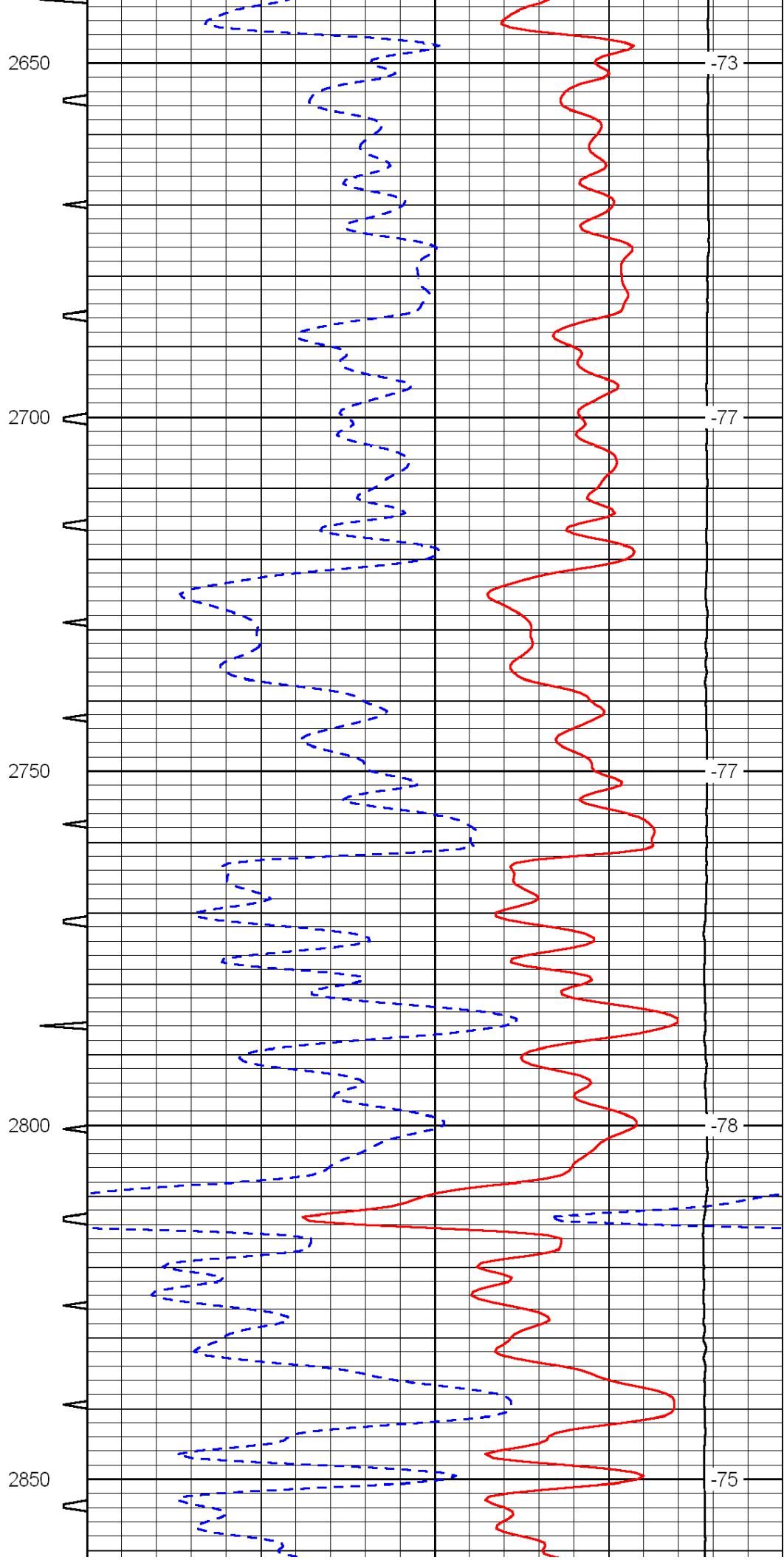
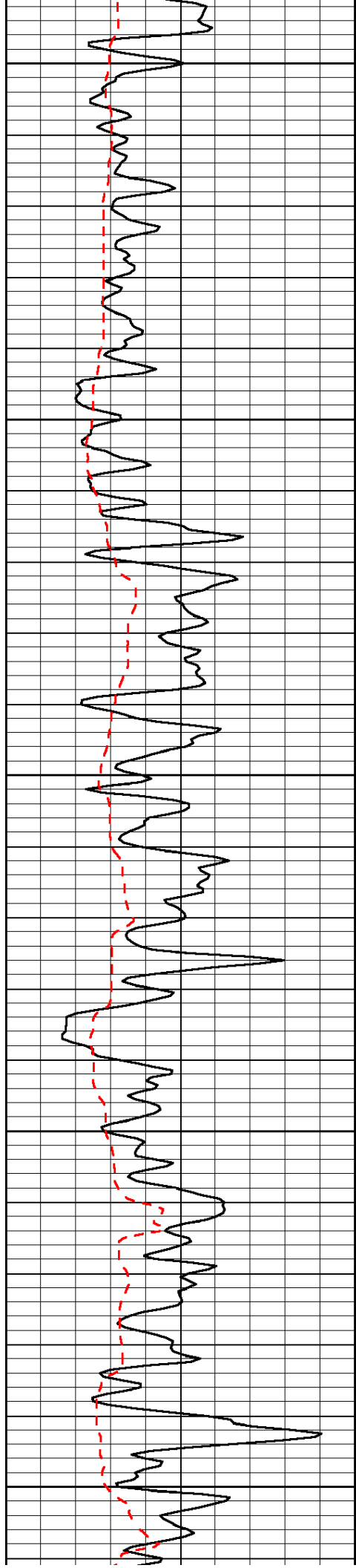


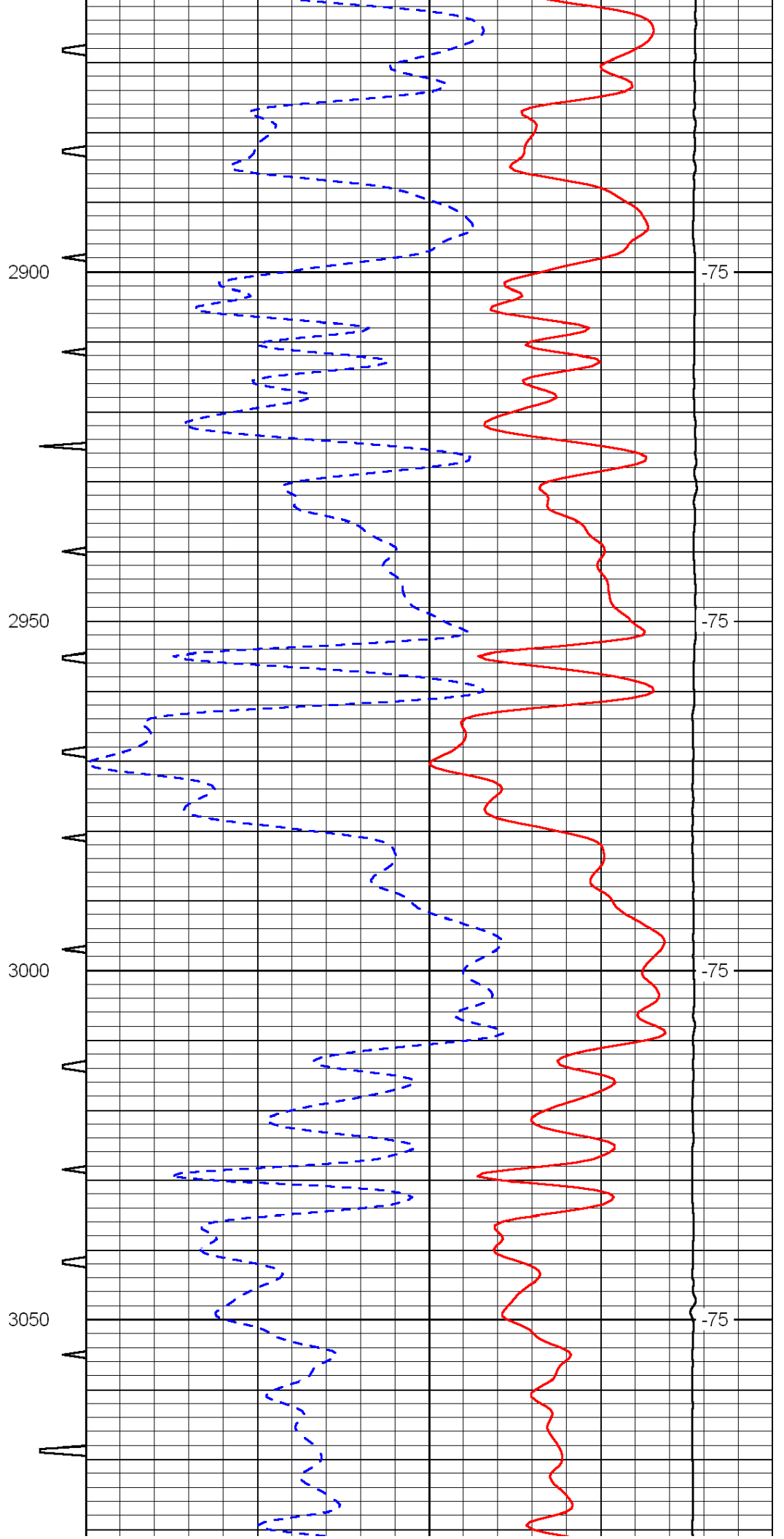
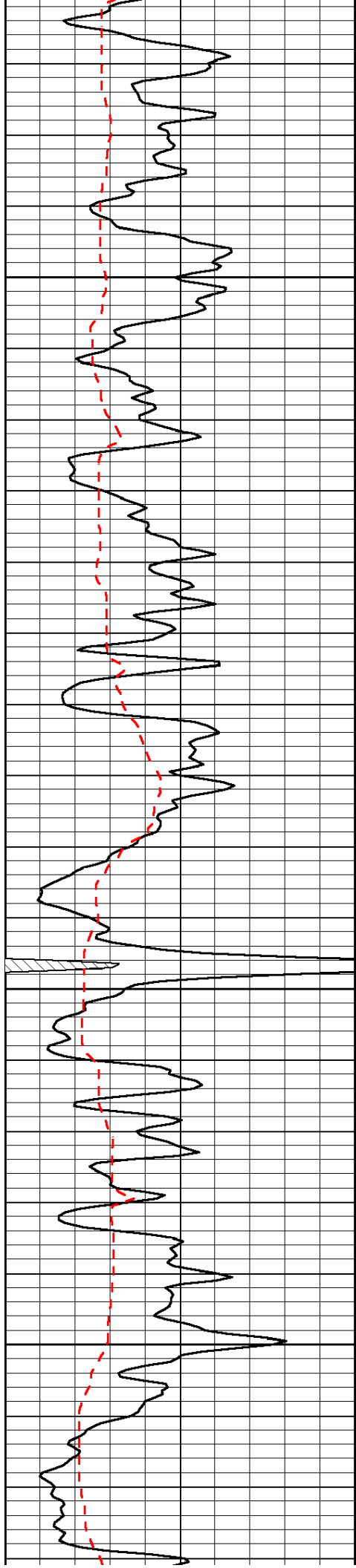


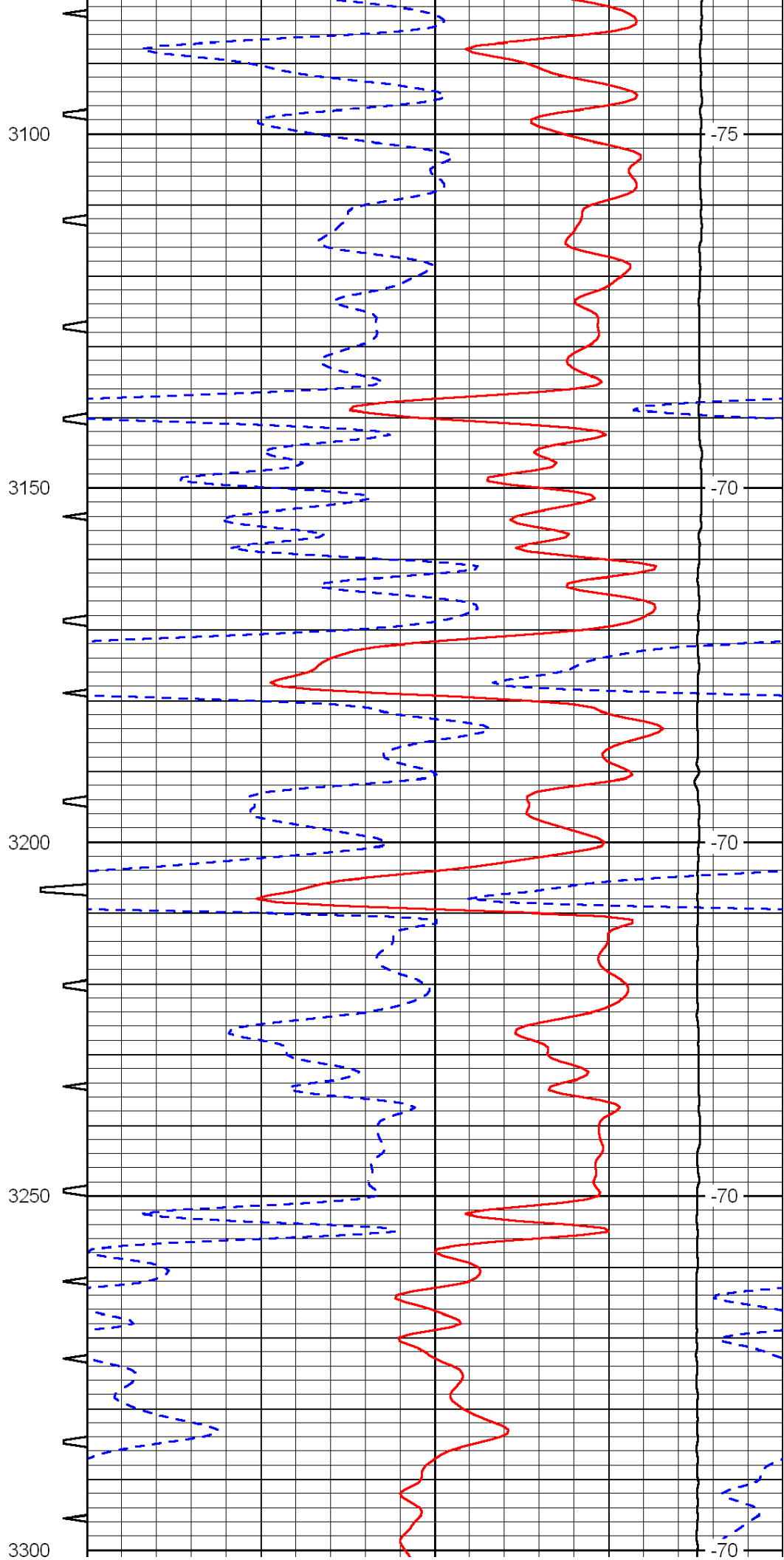
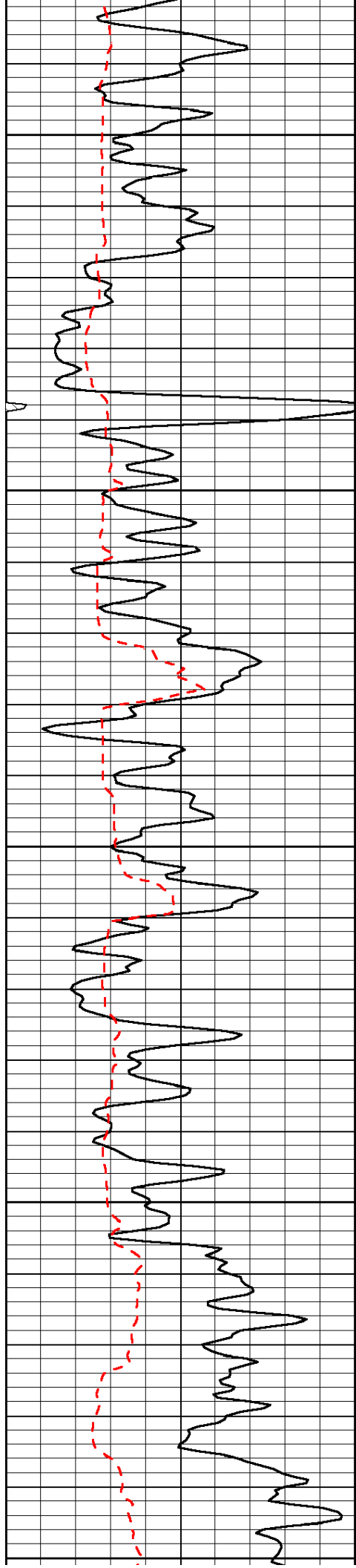


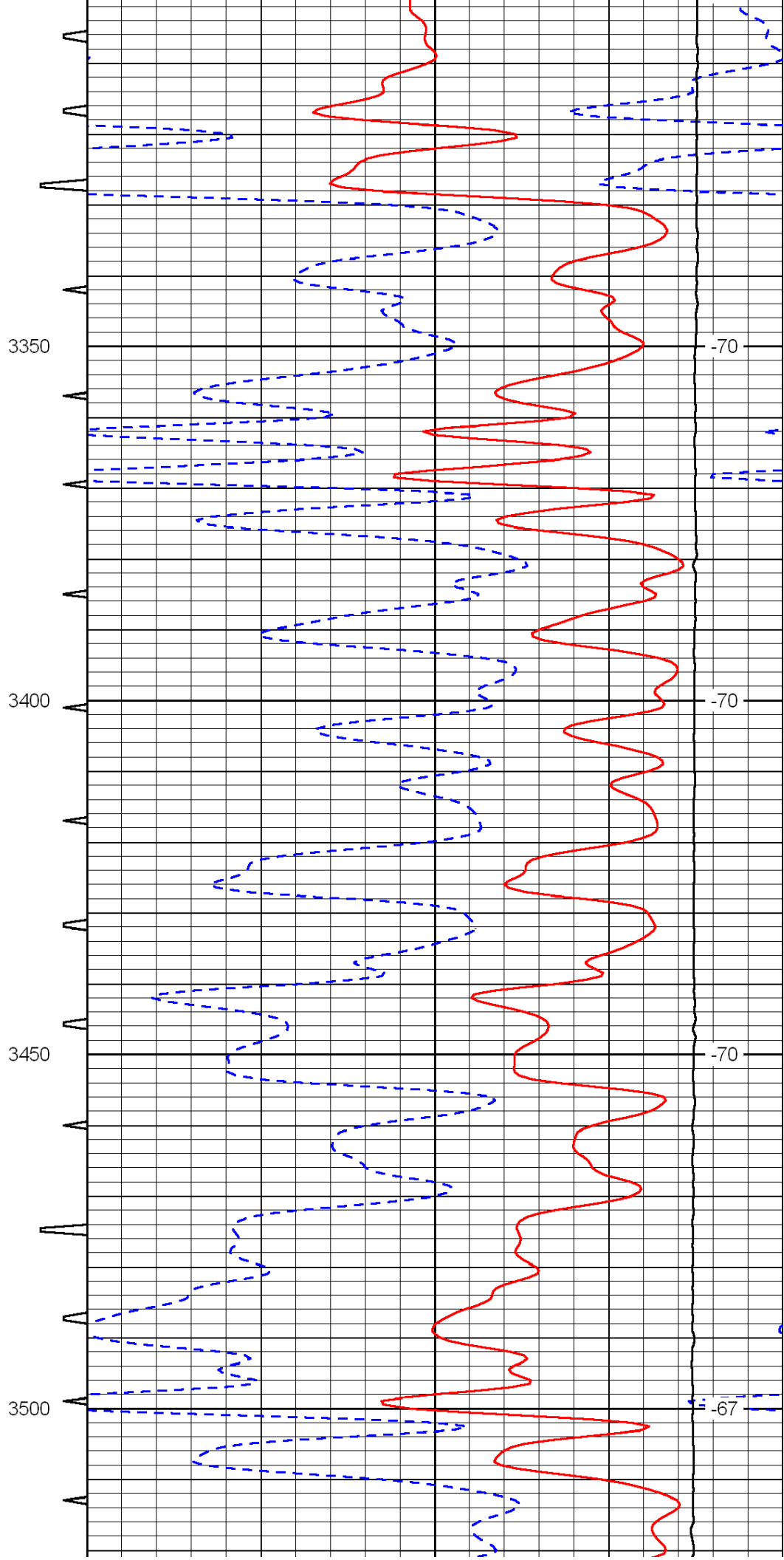
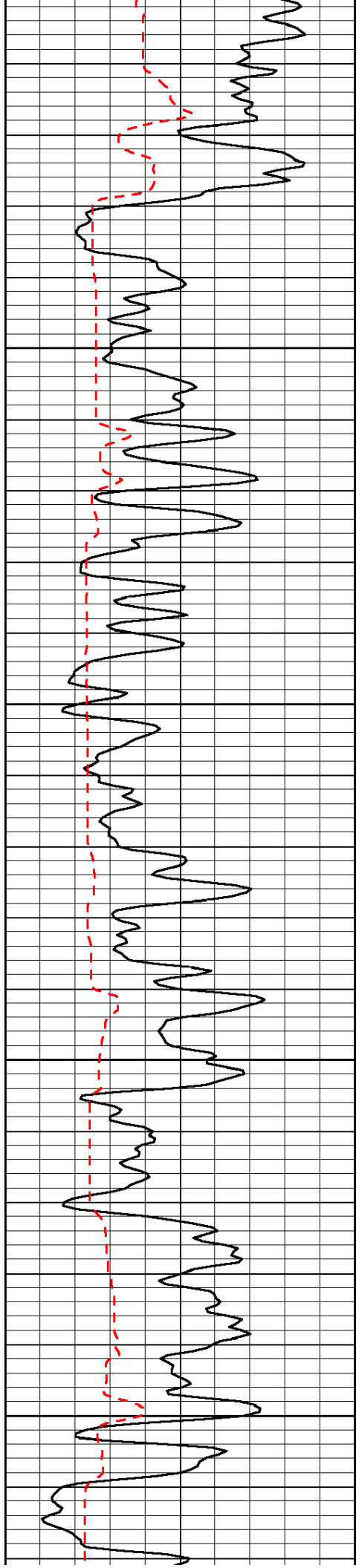


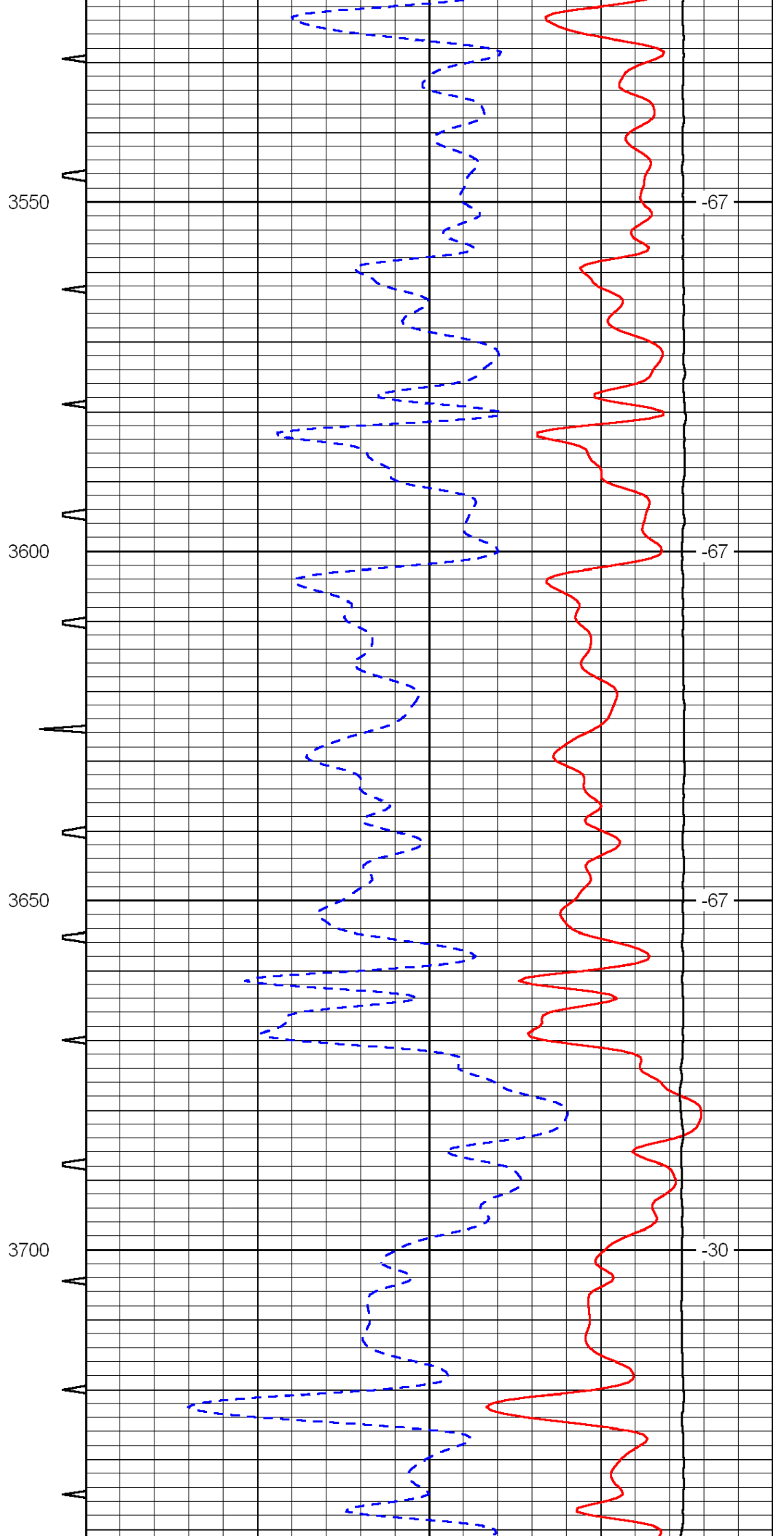
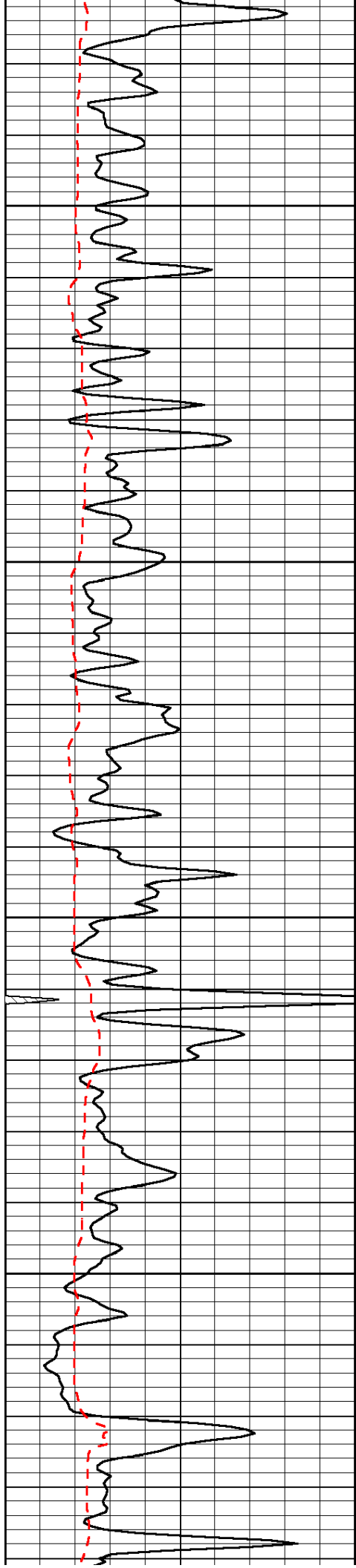


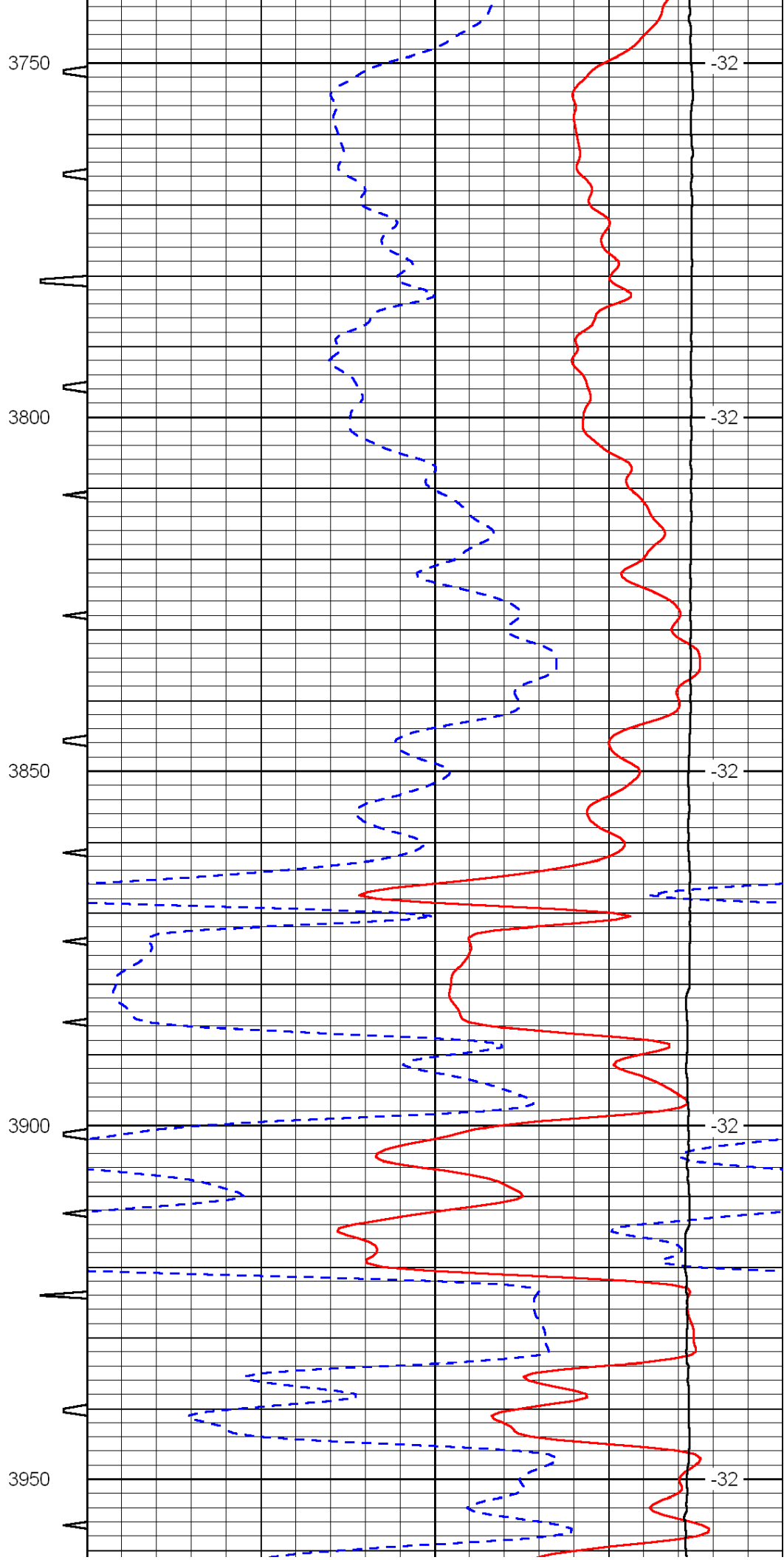
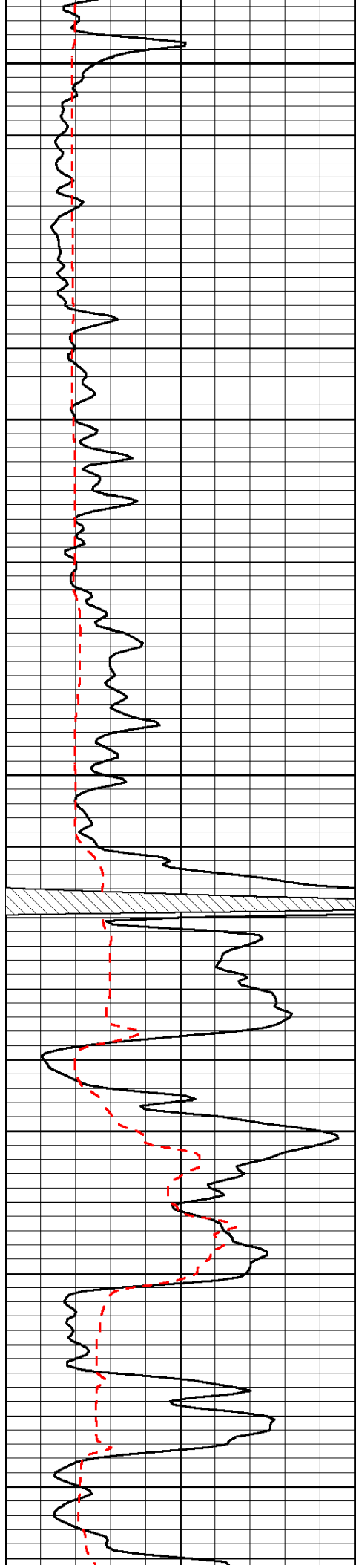


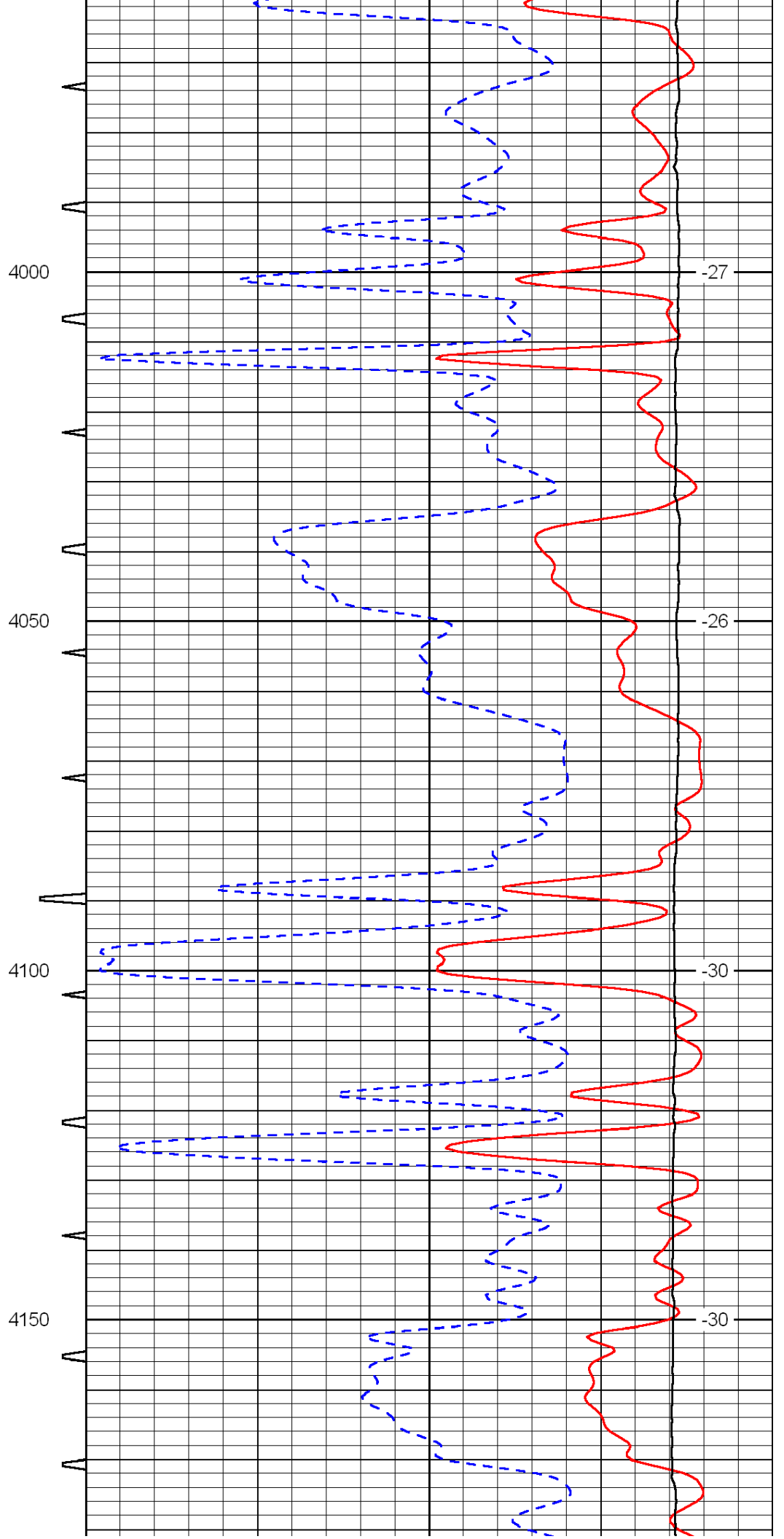
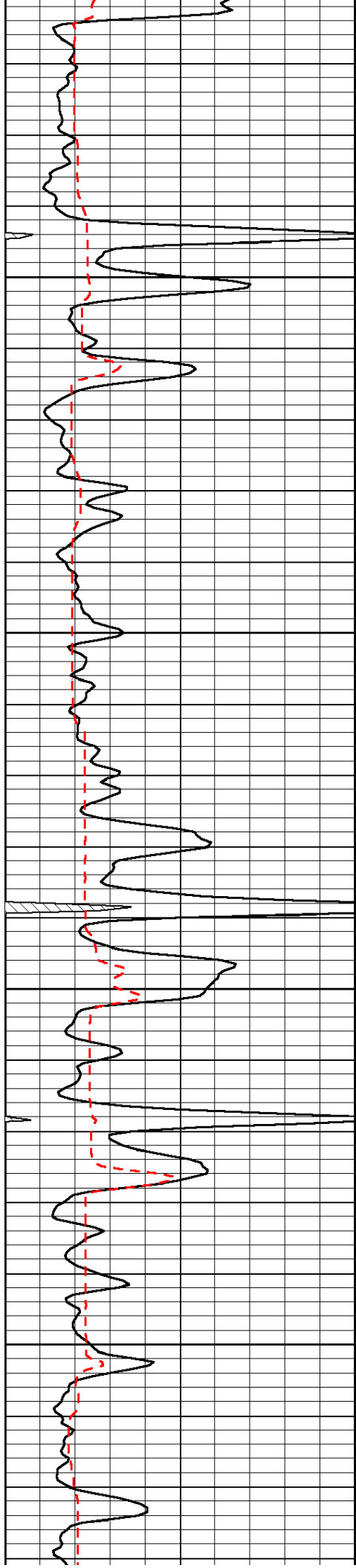


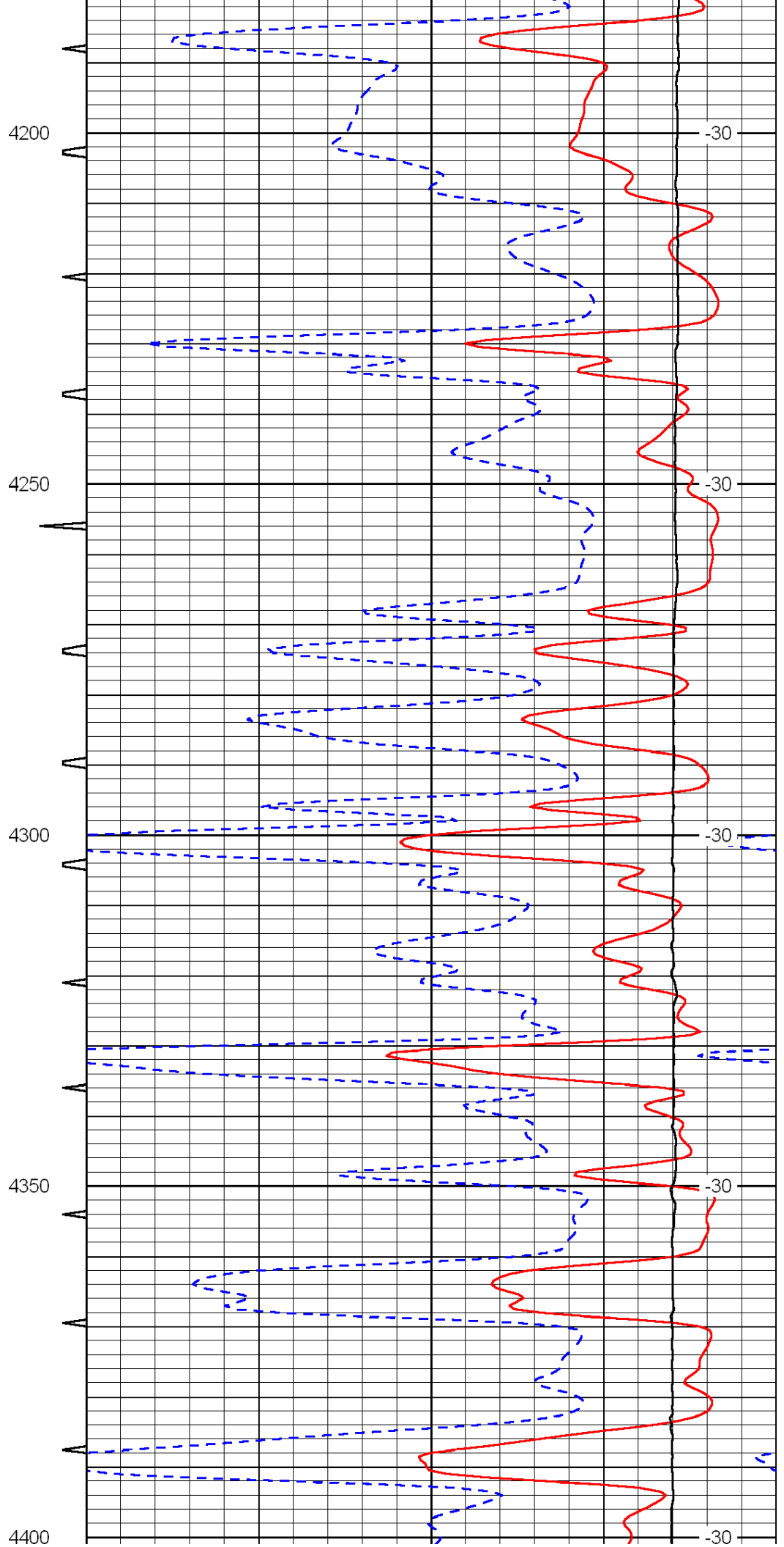
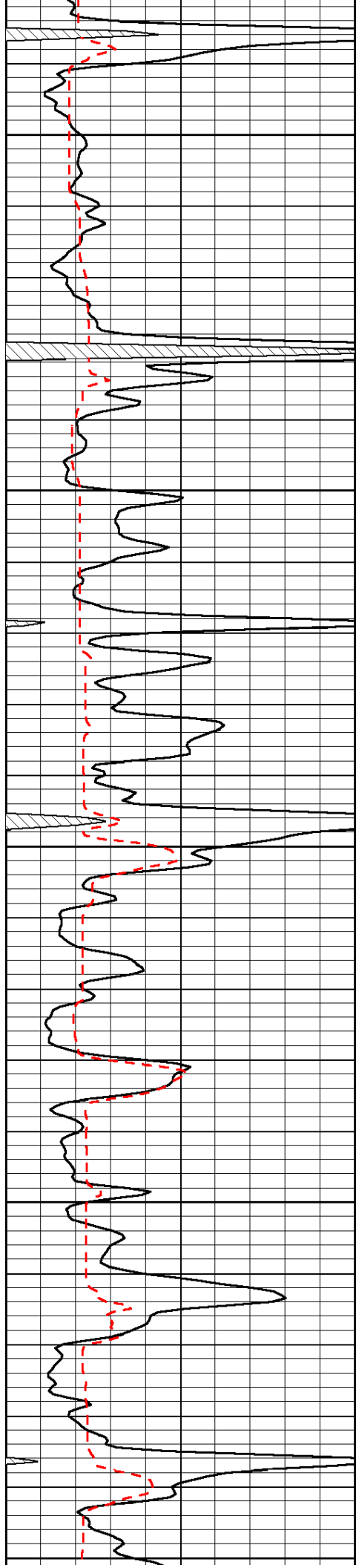


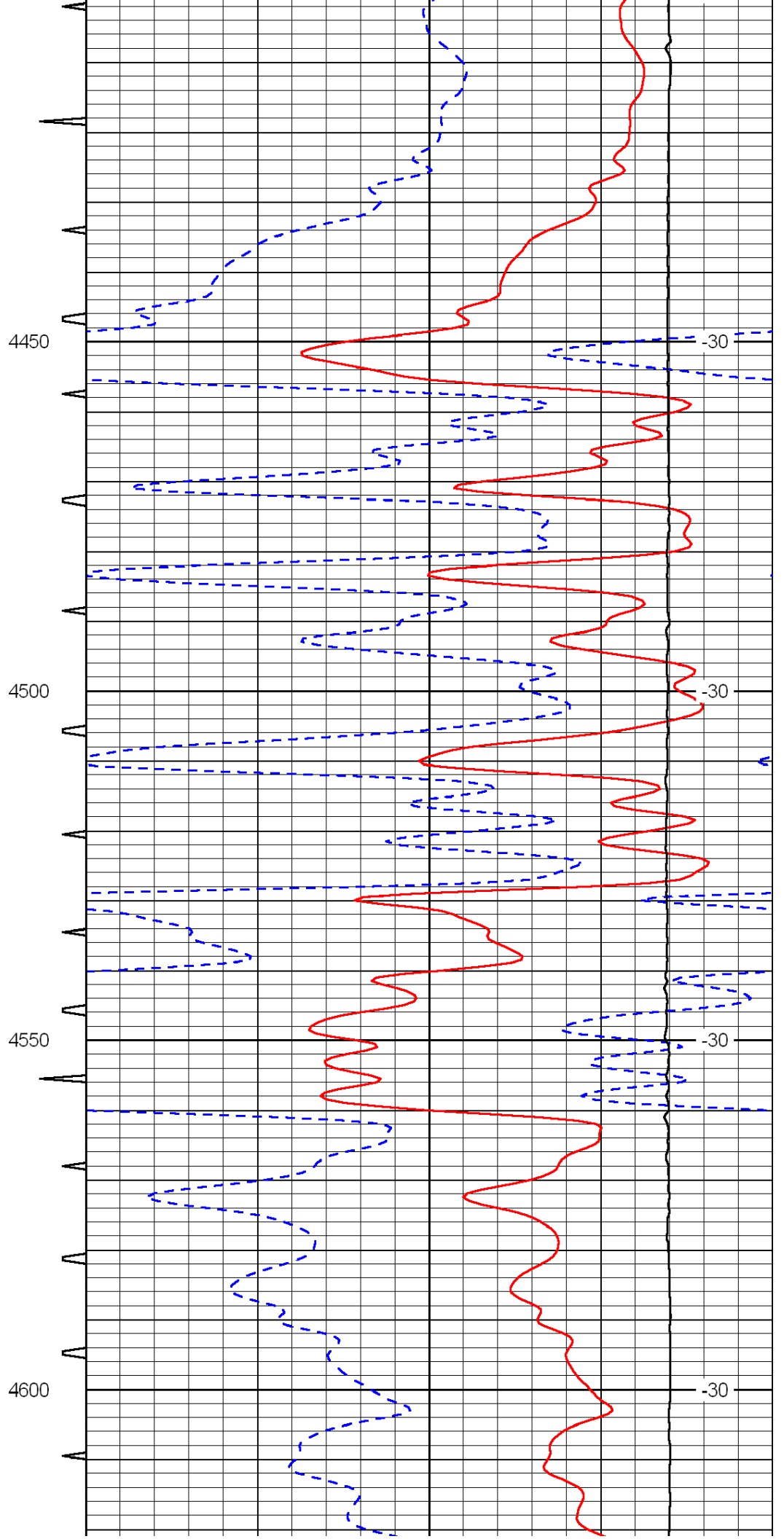
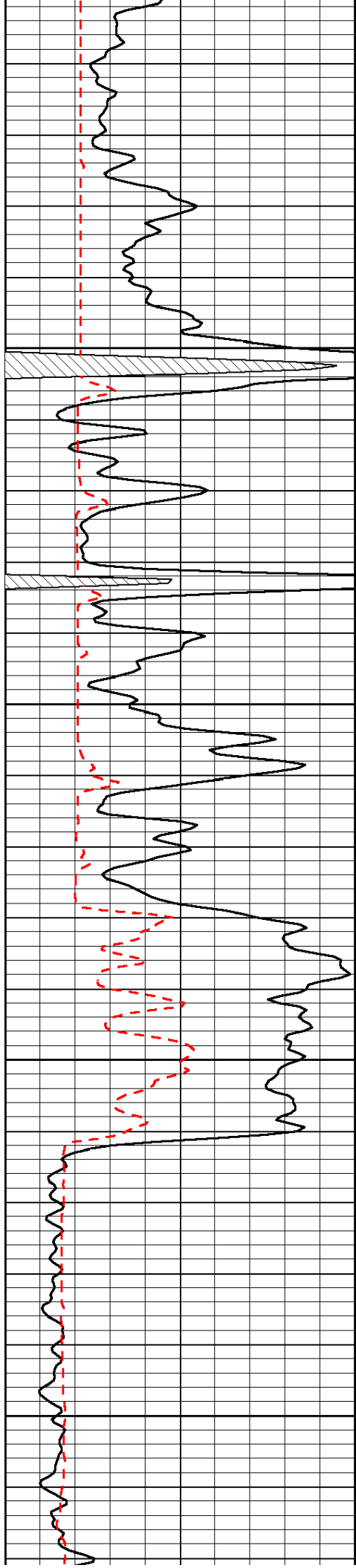


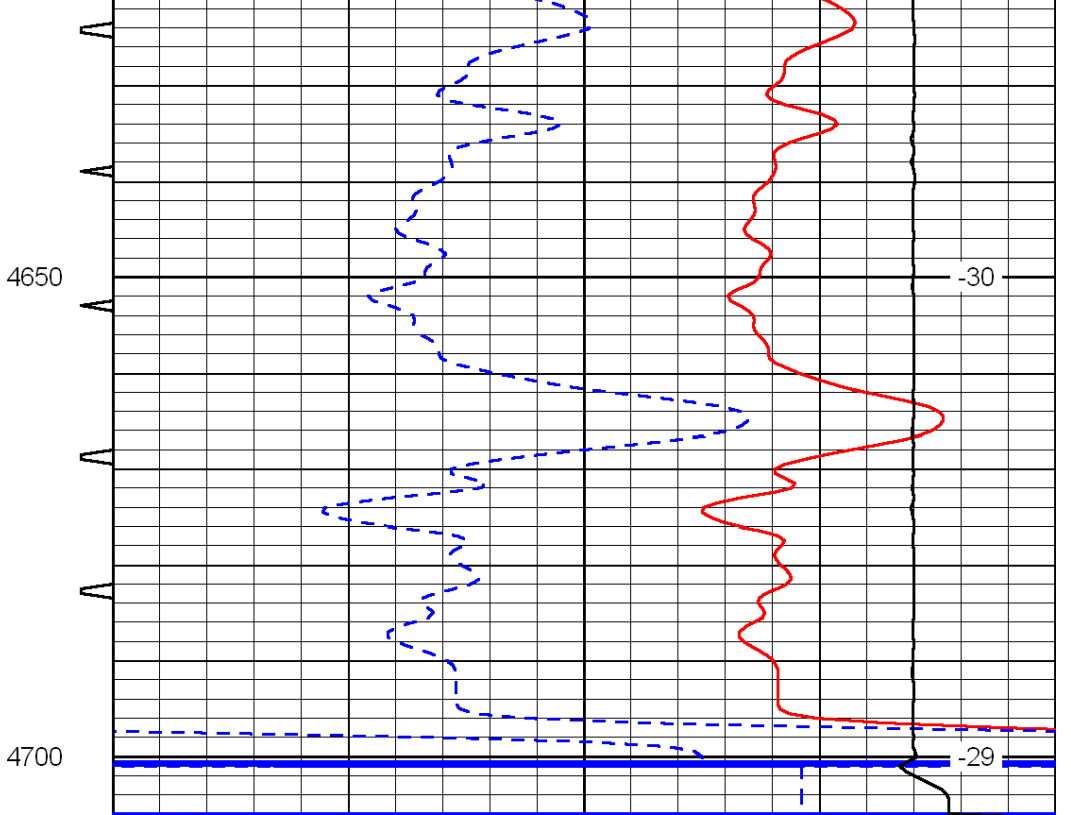
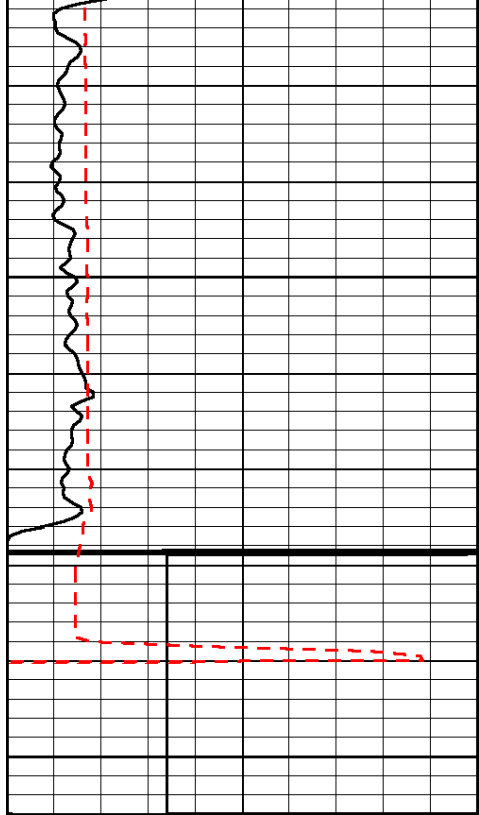












0	Gamma Ray	150	Sonic Int	140	Delta Time (usec/ft)	40
150	Gamma Ray	300	5	0	SPOR	-10
6	Caliper (GAPI)	16		15000	LTEN (lb)	0
LSPD						