



Microresistivity Log

DIGITAL LOG (785) 625-3858

API No.	15-083-21,722-00-00	
Company	Norstar Petroleum, Inc.	
Well	Phillips-Denny No. 1-4	
Field	Fossil Ridge	
County	Hodgeman	State Kansas
Location	SE NW NE 1046' FNL & 1777' FEL	
Sec: 4	Twp: 22 S	Rge: 23 W
Other Services	CNL/CDL DIL/BHCS	

Permanent Datum	Ground Level	Elevation 2302
Log Measured From	Kelly Bushing	5 Ft. Above Perm. Datum
Drilling Measured From	Kelly Bushing	
Date	8/28/2011	

Run Number	Two
Depth Driller	4700
Depth Logger	4701
Bottom Logged Interval	4700
Top Log Interval	3700
Casing Driller	8.625 @ 257
Casing Logger	260
Bit Size	7.875
Type Fluid in Hole	Chemical
Salinity, ppm CL	7.400
Density / Viscosity	9.1 56
pH / Fluid Loss	9.0 16
Source of Sample	Flowline
Rm @ Meas. Temp	.62 @ 80
Rmf @ Meas. Temp	.47 @ 80
Rmc @ Meas. Temp	.83 @ 80
Source of Rmf / Rmc	Charts
Rm @ BHT	.40 @ 125
Operating Rig Time	4 1/2 Hours
Max Rec. Temp. F	125
Equipment Number	91
Location	Hays
Recorded By	K Bange
Witnessed By	Brad Rine

<<< Fold Here >>>

All interpretations are opinions based on inferences from electrical or other measurements and we cannot and do not guarantee the accuracy or correctness of any interpretation, and we shall not, except in the case of gross or willful negligence on our part, be liable or responsible for any loss, costs, damages, or expenses incurred or sustained by anyone resulting from any interpretation made by any of our officers, agents or employees. These interpretations are also subject to our general terms and conditions set out in our current Price Schedule.

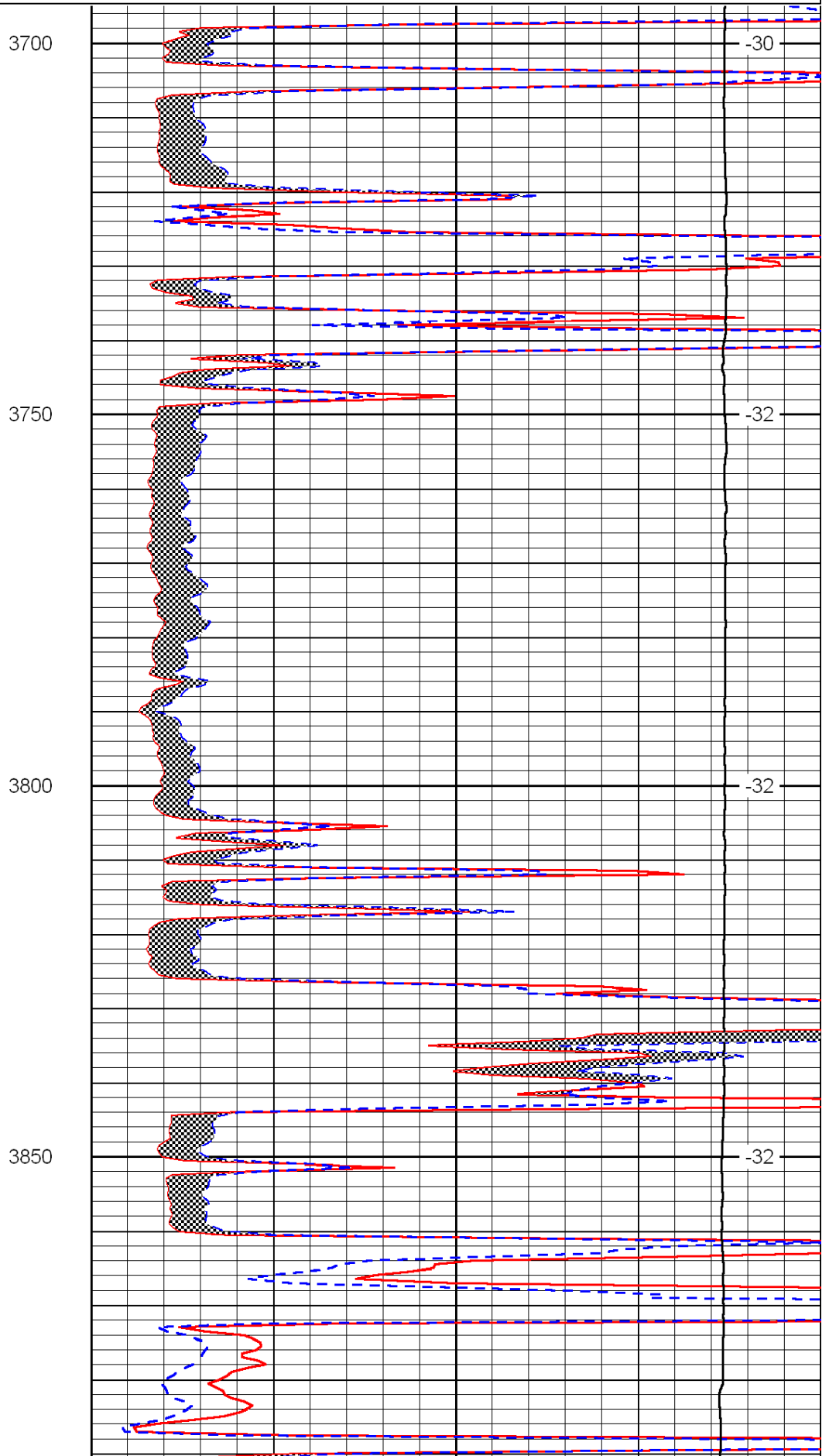
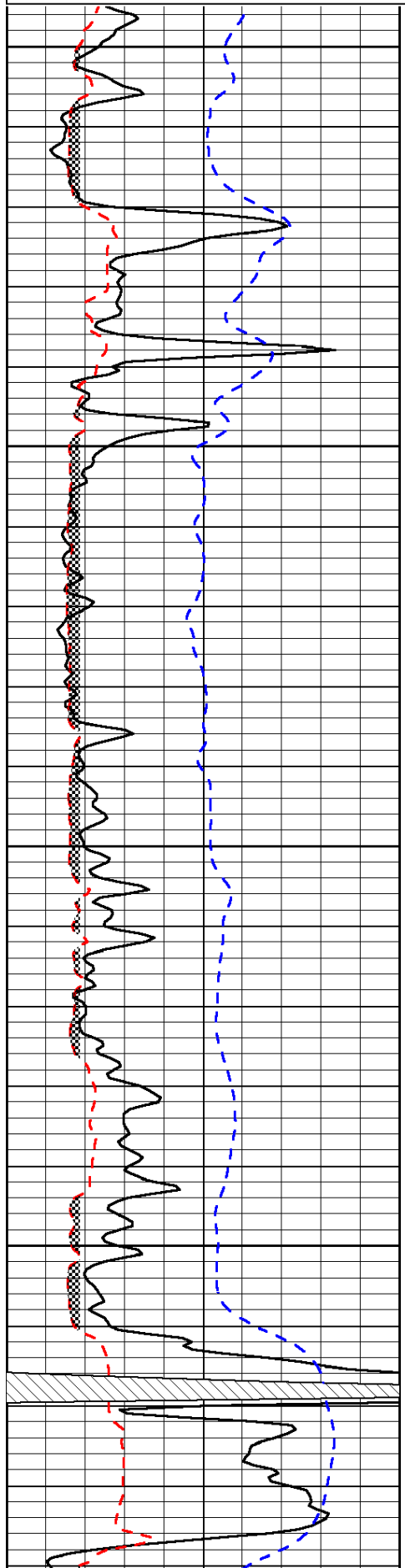
Comments

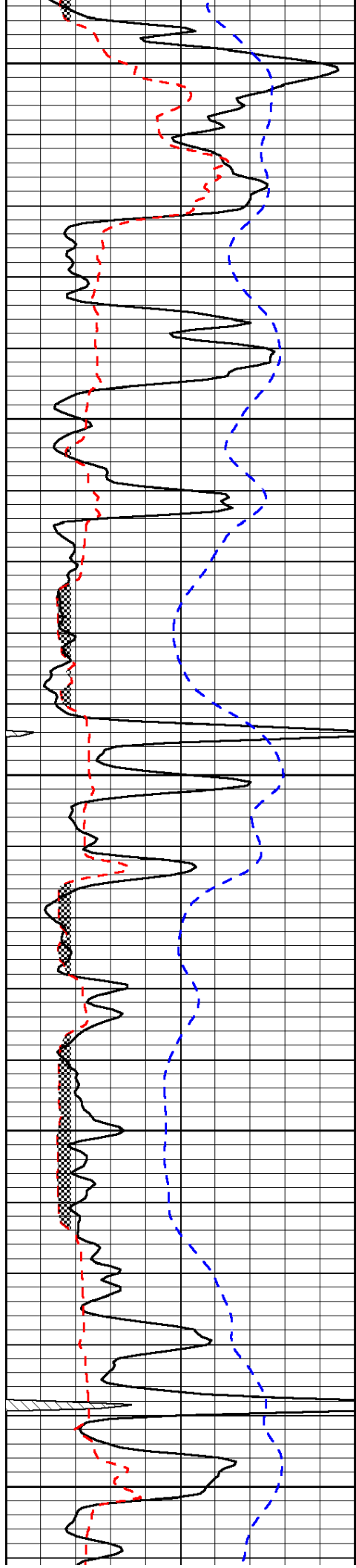
Thank you for using Log-Tech, Inc.
 (785) 625-3858
 Ness City South to S Rd.
 East 2 1/2
 South into

0	Gamma Ray	150
6	Micro Log Caliper (GAPI)	16
-200	SP (mV)	0

0	Micro Inverse 1 X 1	40
0	Micro Normal 2"	40
15000	Line Weight	0

LSPD





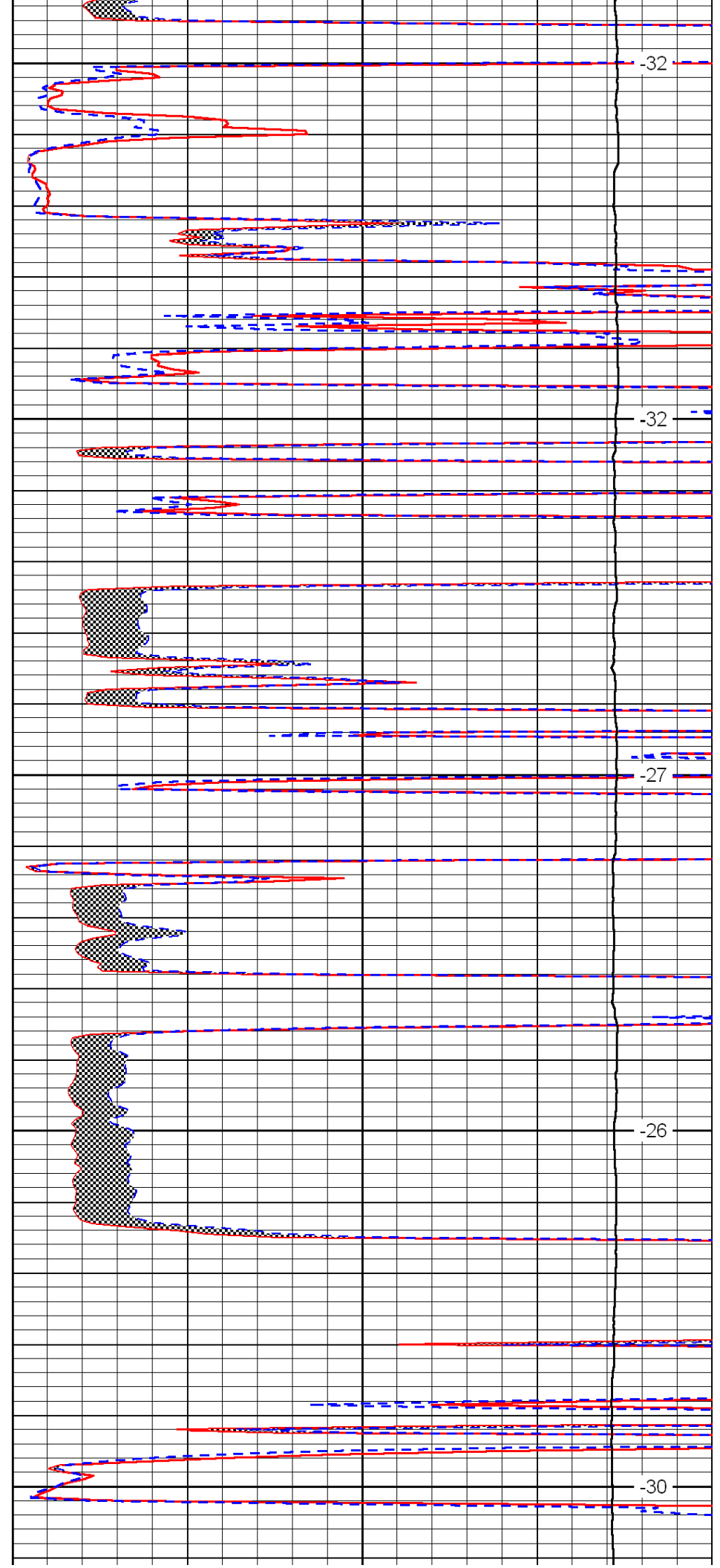
3900

3950

4000

4050

4100



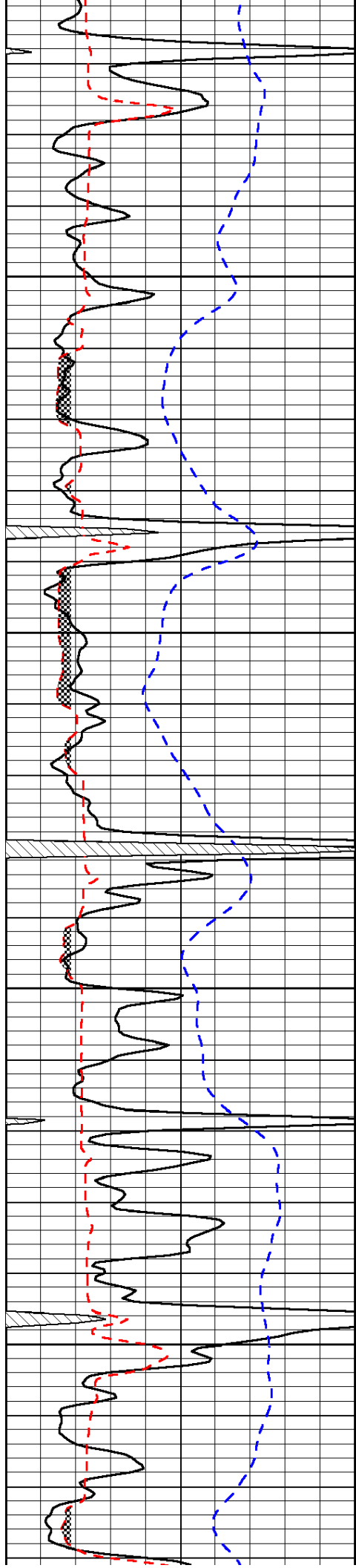
-32

-32

-27

-26

-30

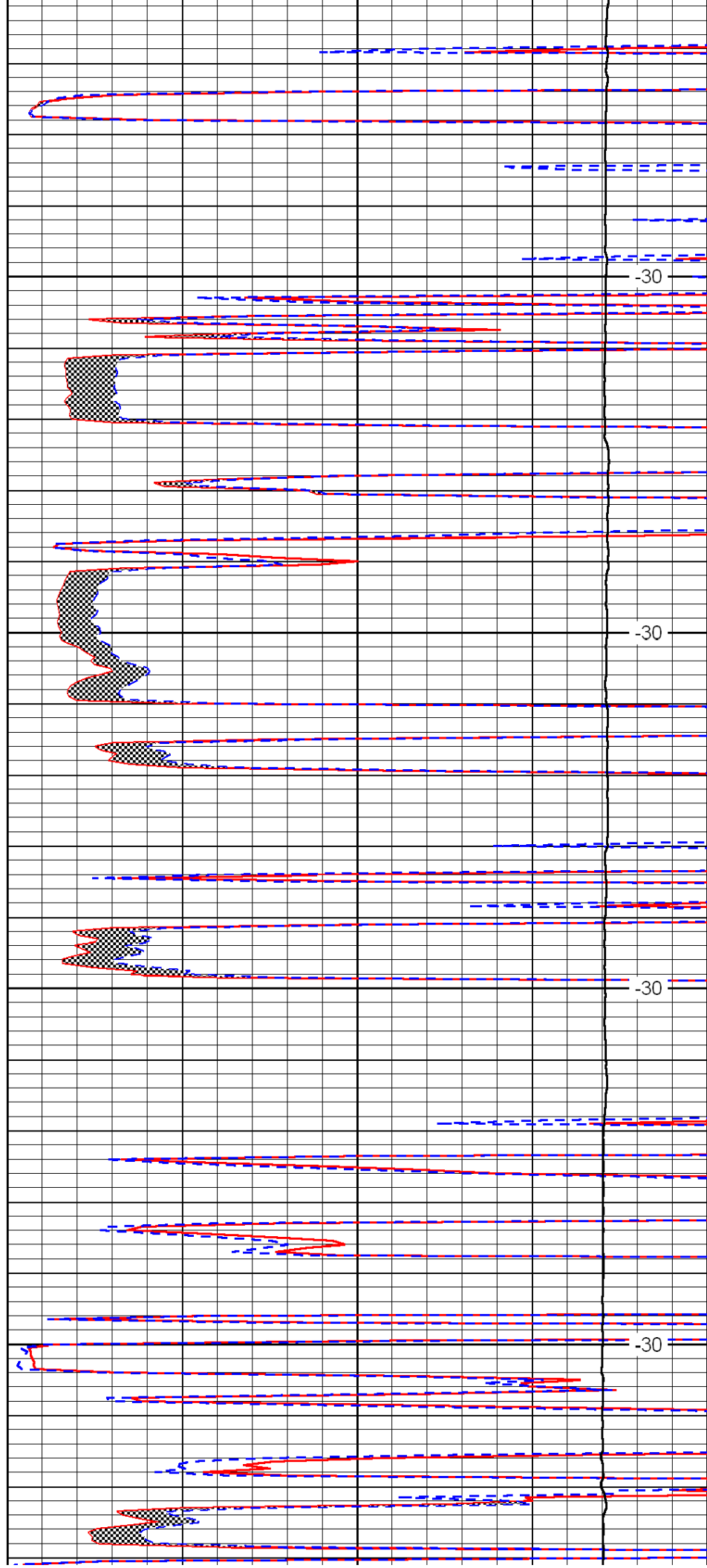


4150

4200

4250

4300

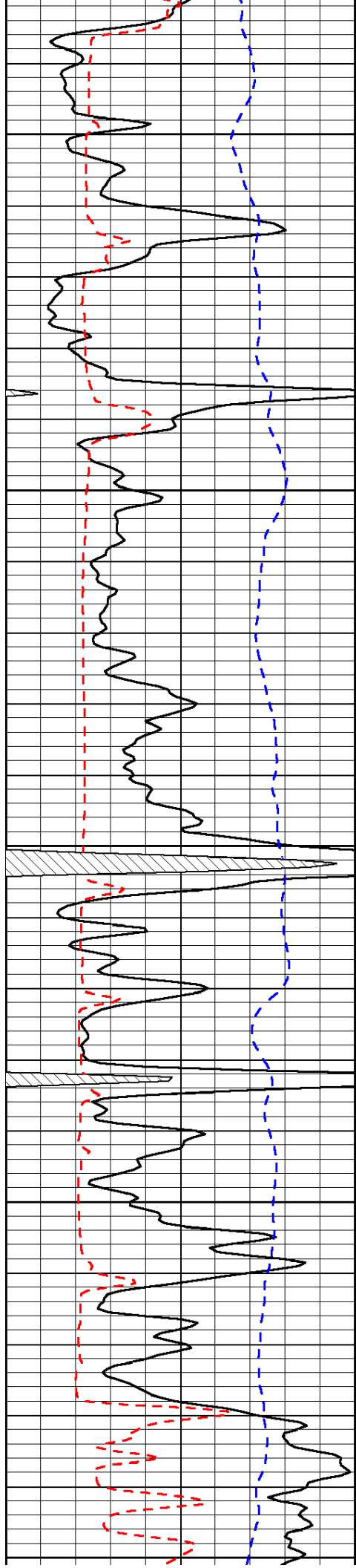


-30

-30

-30

-30



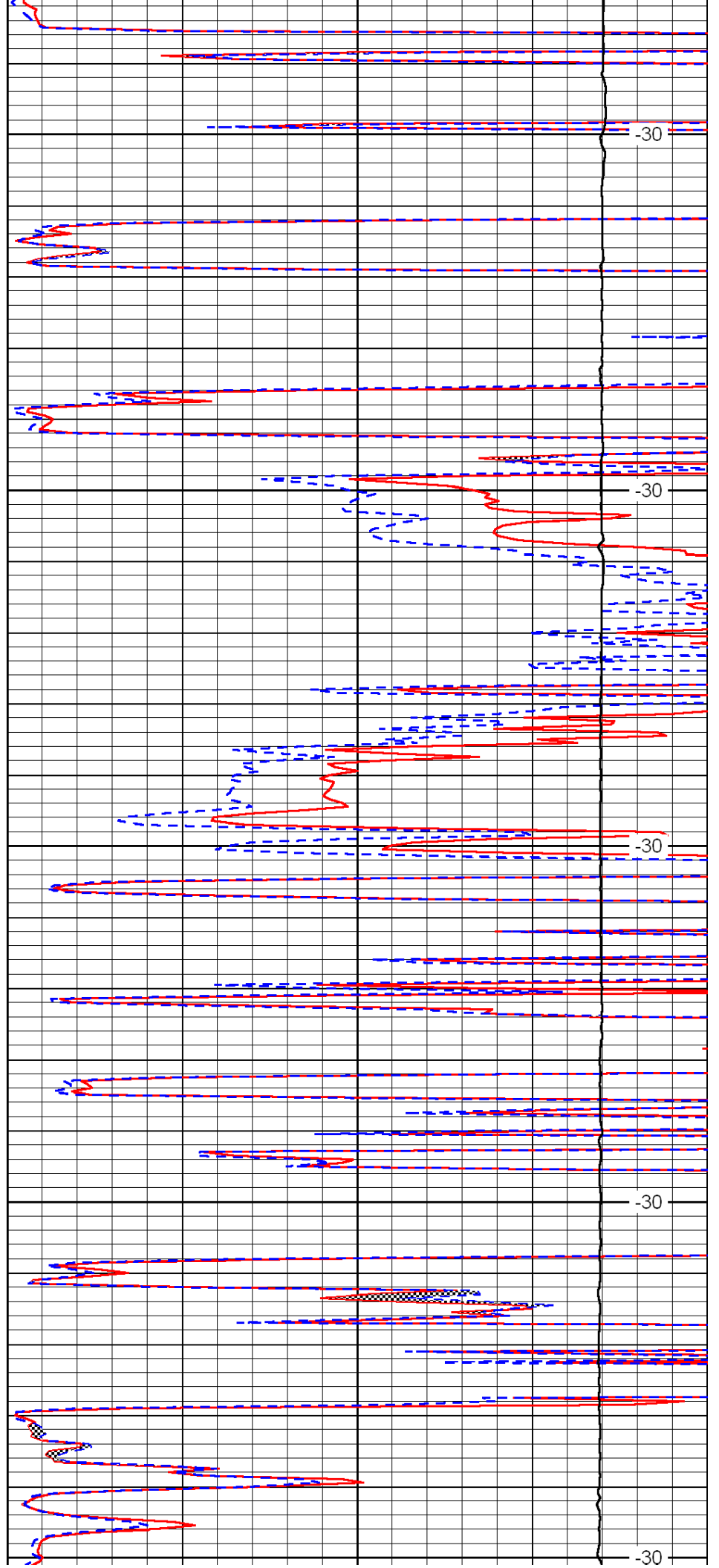
4350

4400

4450

4500

4550



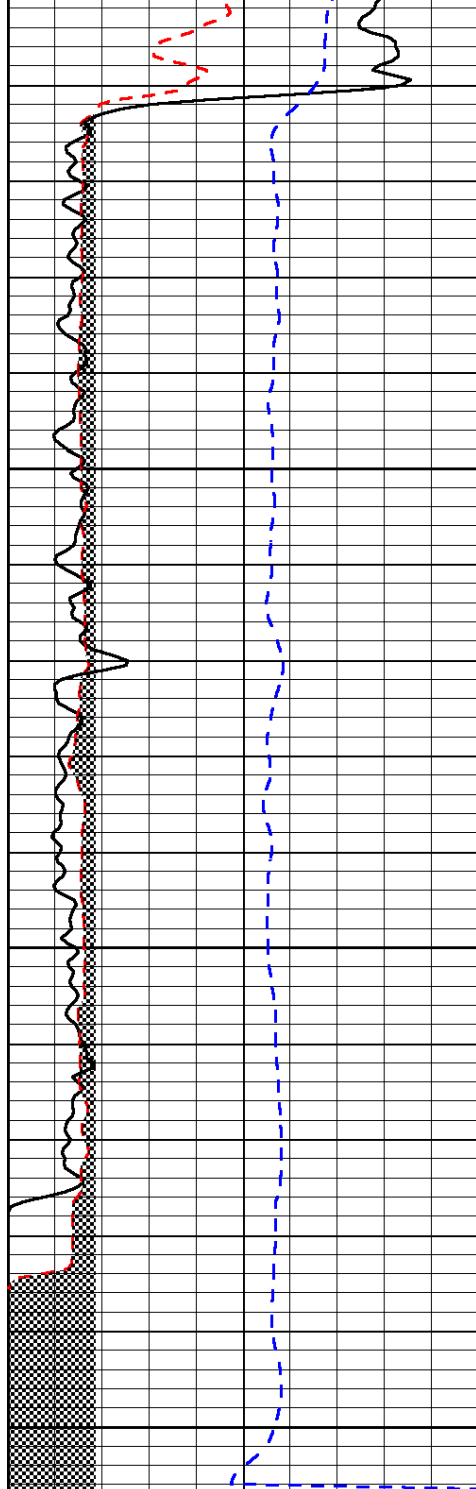
-30

-30

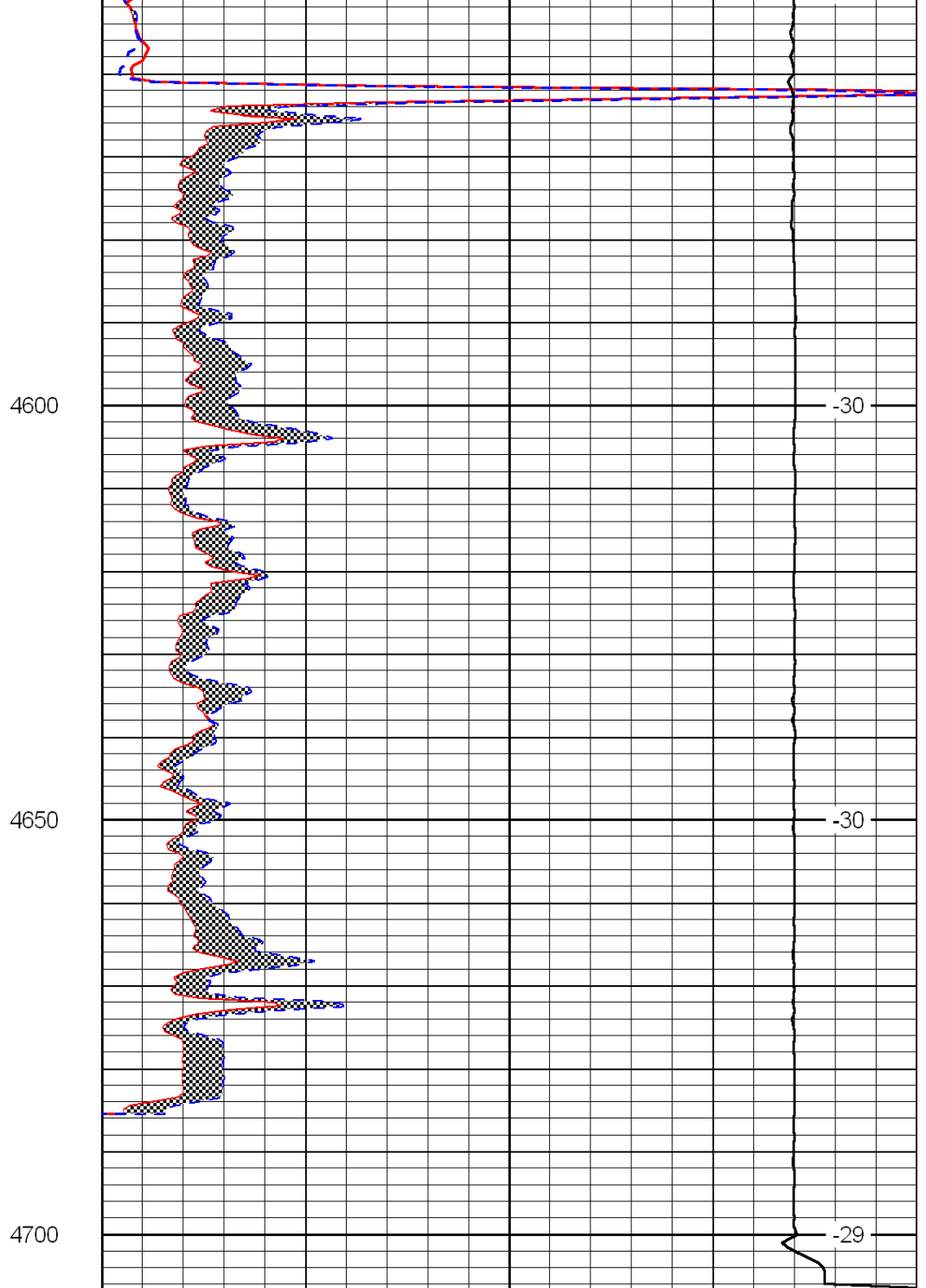
-30

-30

-30



0	Gamma Ray	150
6	Micro Log Caliper (GAPI)	16
-200	SP (mV)	0



0	Micro Inverse 1 X 1	40
0	Micro Normal 2''	40
15000	Line Weight	0

LSPD