



DIGITAL LOG (785) 625-3858

Dual Induction Log

API No. 15-051-26163-00-00

Company TDI, Inc.
 Well Yarnell-Gross Unit #1
 Field Reichert
 County Ellis State Kansas

Location SE NE SE SW
 780' FSL / 2550' FWL

Other Services
 CNL / CDL
 MEL

Permanent Datum Ground Level Elevation 2045
 Log Measured From Kelly Bushing 10 Ft. Above Perm. Datum
 Drilling Measured From Kelly Bushing

Sec: 4 Twp: 15S Rge: 19W

Elevation
 K.B. 2055
 D.F. 2045
 G.L. 2045

Date	8/2/2011
Run Number	One
Depth Driller	3765
Depth Logger	3763
Bottom Logged Interval	3762
Top Log Interval	400
Casing Driller	8.625 @ 422
Casing Logger	422
Bit Size	7.875
Type Fluid in Hole	Chemical
Salinity, ppm CL	3000
Density / Viscosity	9.3 60
pH / Fluid Loss	10.5 7.8
Source of Sample	Flowline
Rm @ Meas. Temp	0.90 @ 85
Rmf @ Meas. Temp	0.68 @ 85
Rmc @ Meas. Temp	1.22 @ 85
Source of Rmf / Rmc	Charts
Rm @ BHT	0.67 @ 114
Operating Rig Time	4 Hours
Max Rec. Temp. F	114
Equipment Number	15
Location	Hays
Recorded By	R. Barnhart
Witnessed By	Herb Deines

<<< Fold Here >>>

All interpretations are opinions based on inferences from electrical or other measurements and we cannot and do not guarantee the accuracy or correctness of any interpretation, and we shall not, except in the case of gross or willful negligence on our part, be liable or responsible for any loss, costs, damages, or expenses incurred or sustained by anyone resulting from any interpretation made by any of our officers, agents or employees. These interpretations are also subject to our general terms and conditions set out in our current Price Schedule.

Comments

Thank you for using Log-Tech, Inc.
 (785) 625-3858

Antonino, KS:
 2W, 1S, 1/2W, N into

Database File: c:\warrior\data\tdi_yarnell-gross unit #1\tdihd.db
 Dataset Pathname: dil\tdimain
 Presentation Format: dil2in
 Dataset Creation: Tue Aug 02 20:25:43 2011
 Charted by: Depth in Feet scaled 1:600

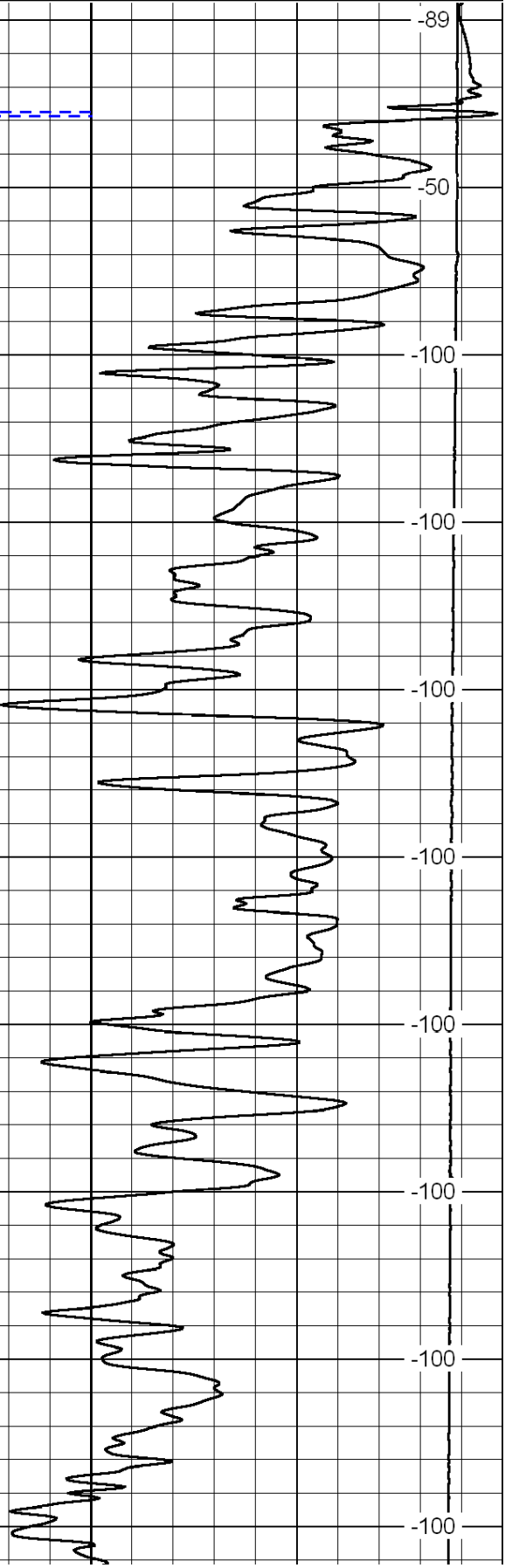
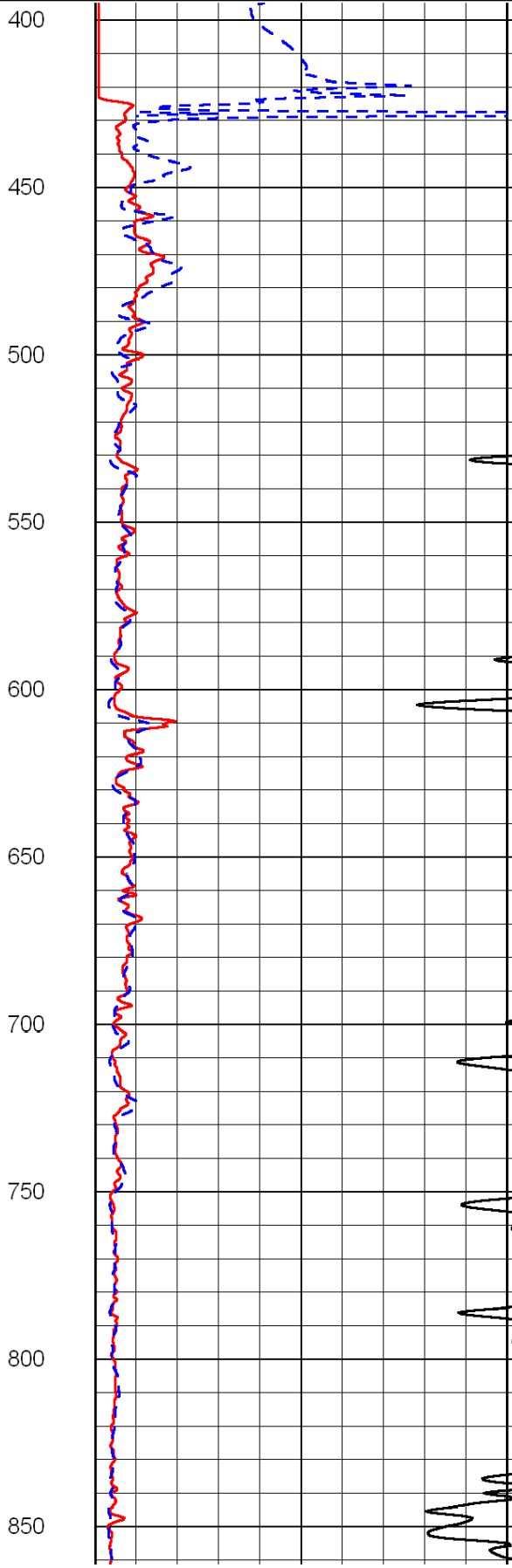
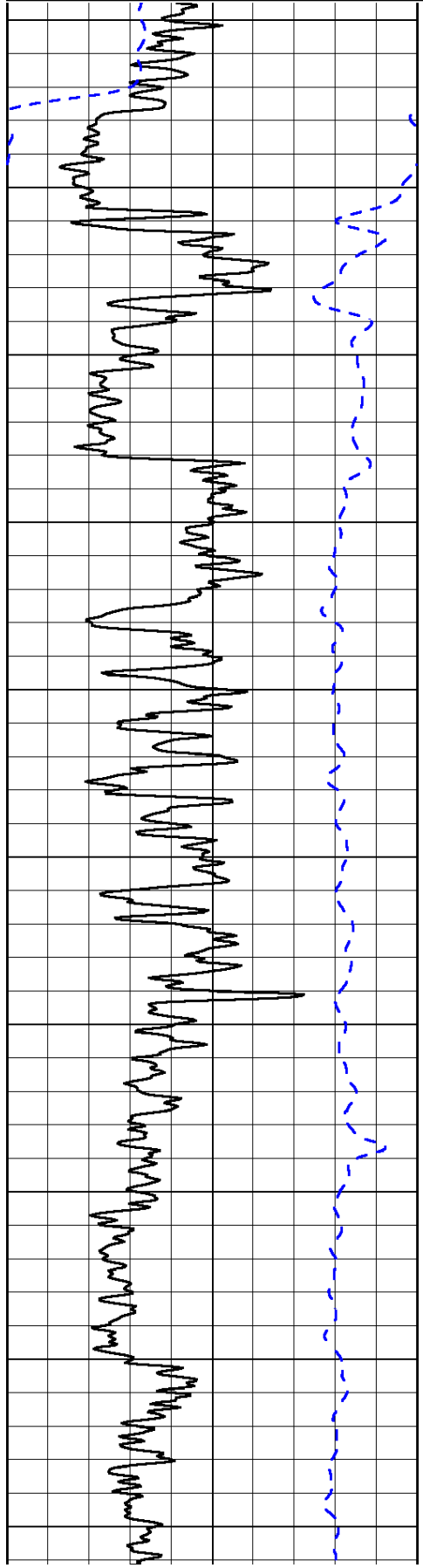
0	Gamma Ray	150
-200	SP (mV)	0

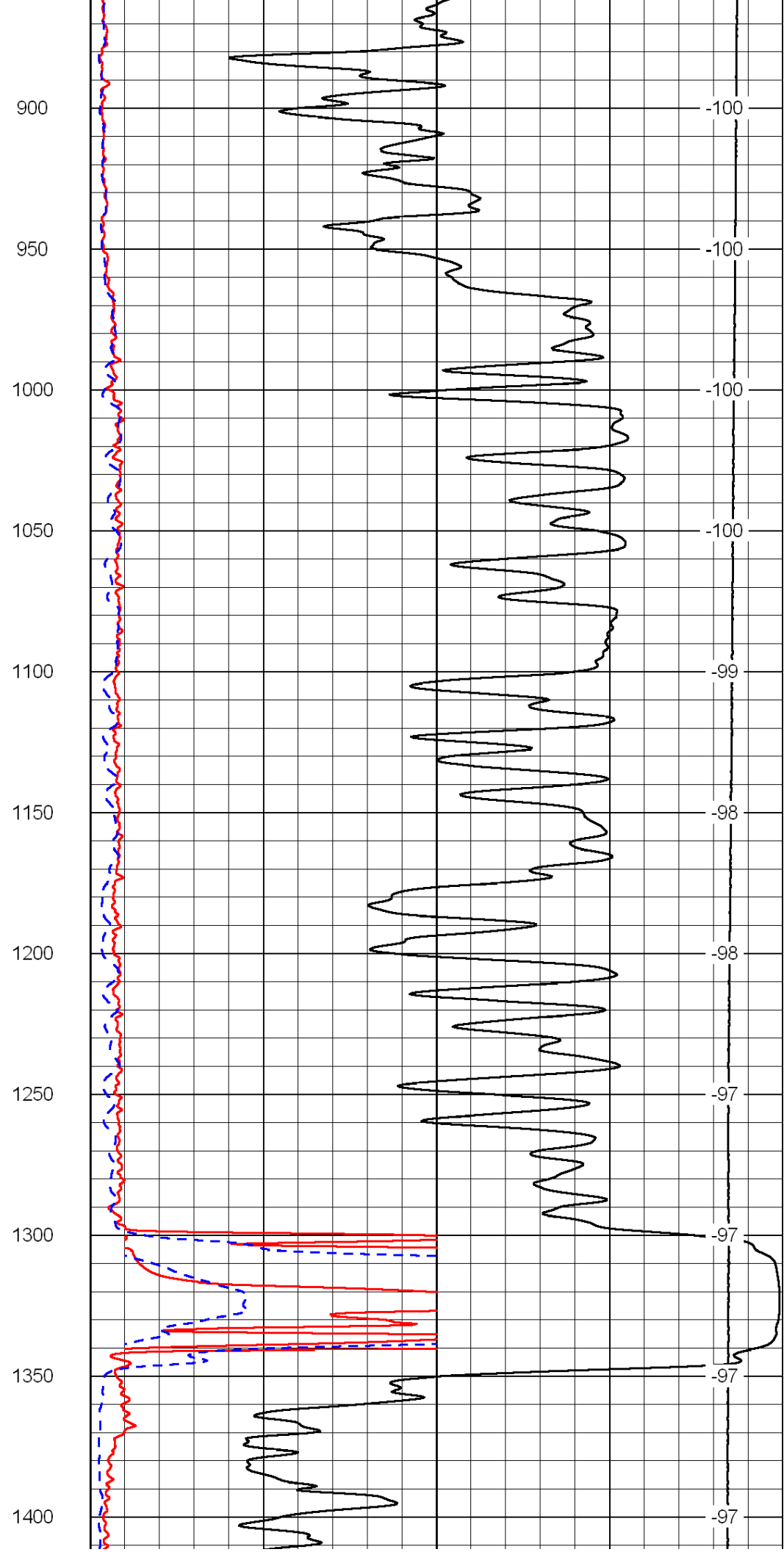
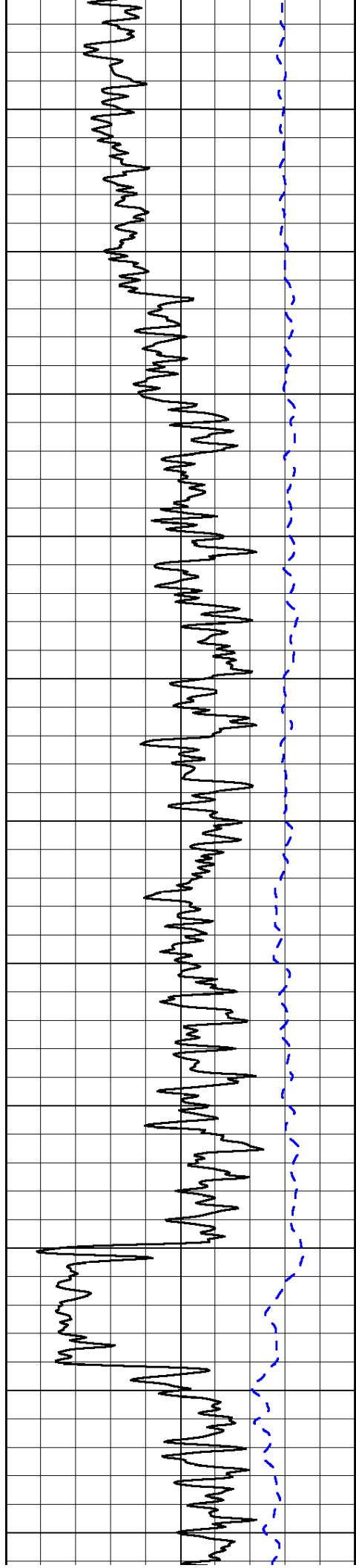
0	Shallow Resistivity	50
0	Deep Resistivity	50

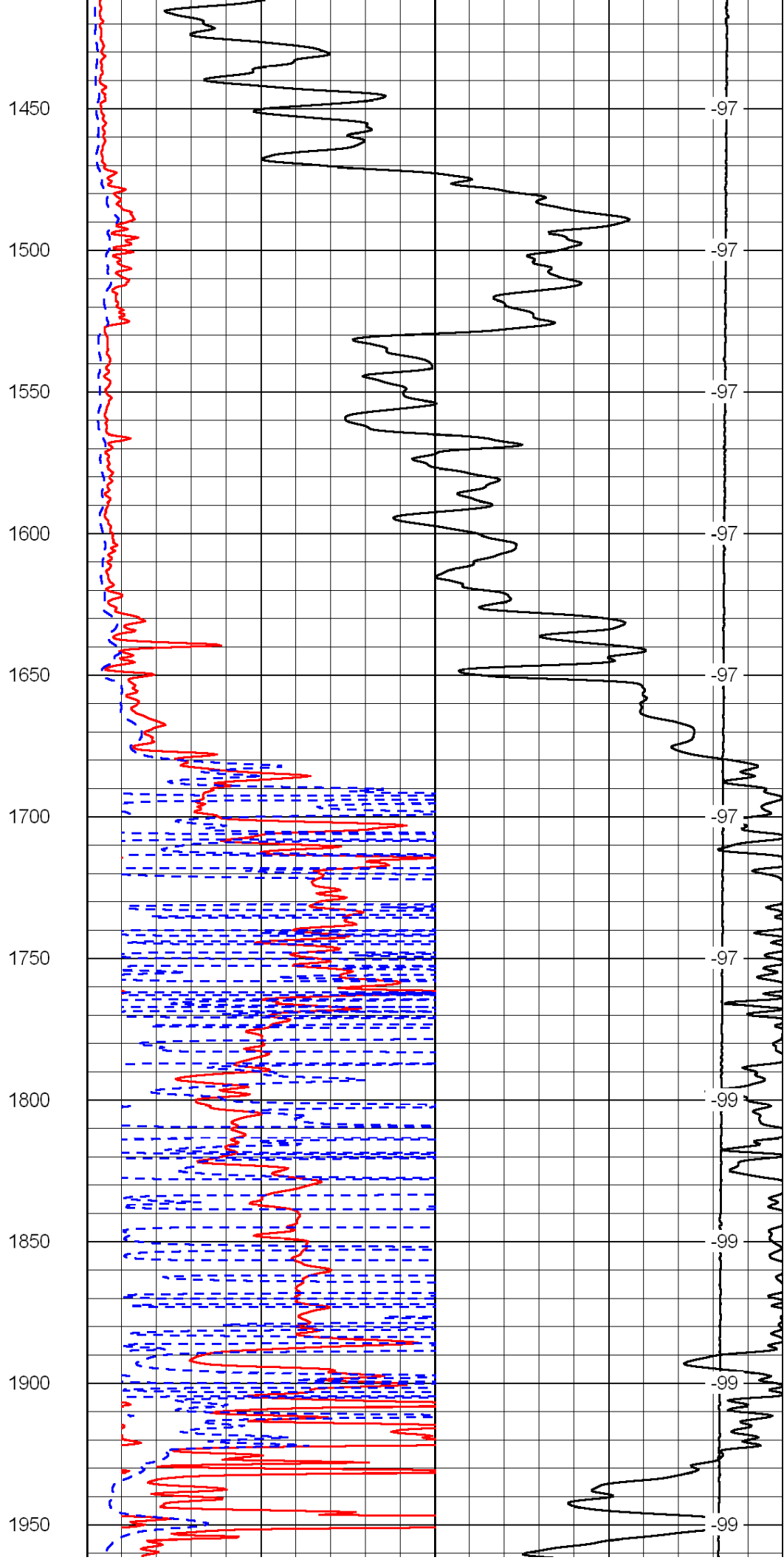
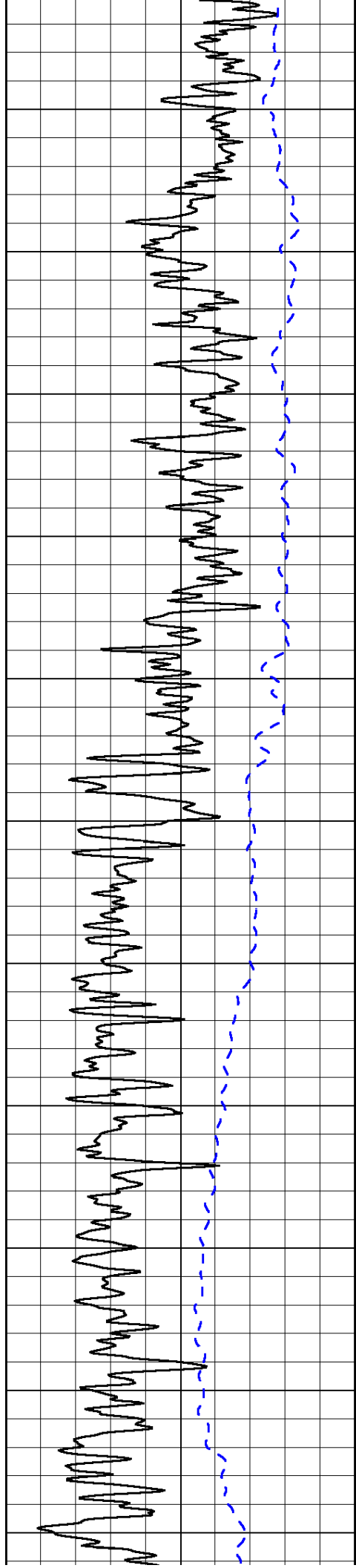
LSPD

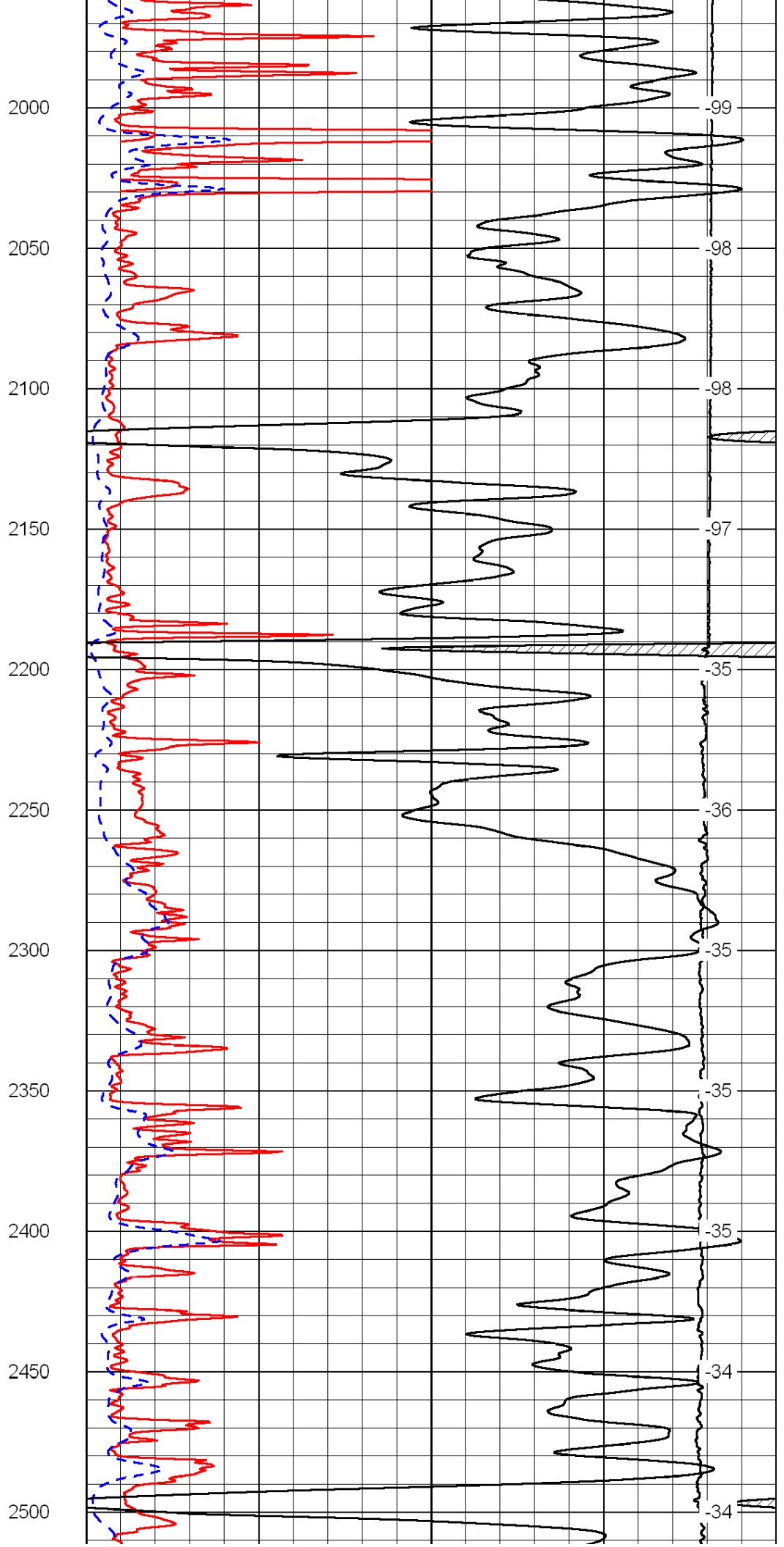
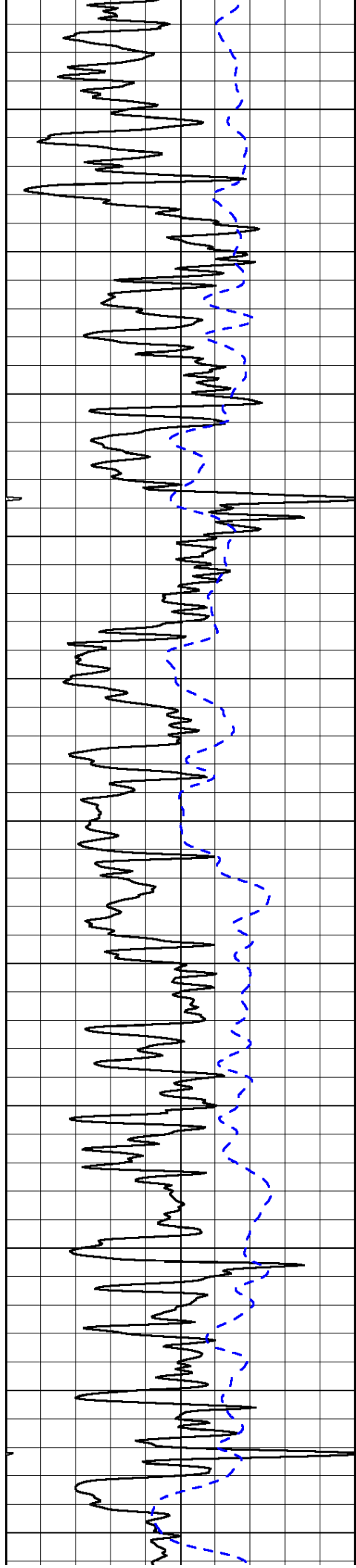
1000	Conductivity	0
15000	Line Tension	0

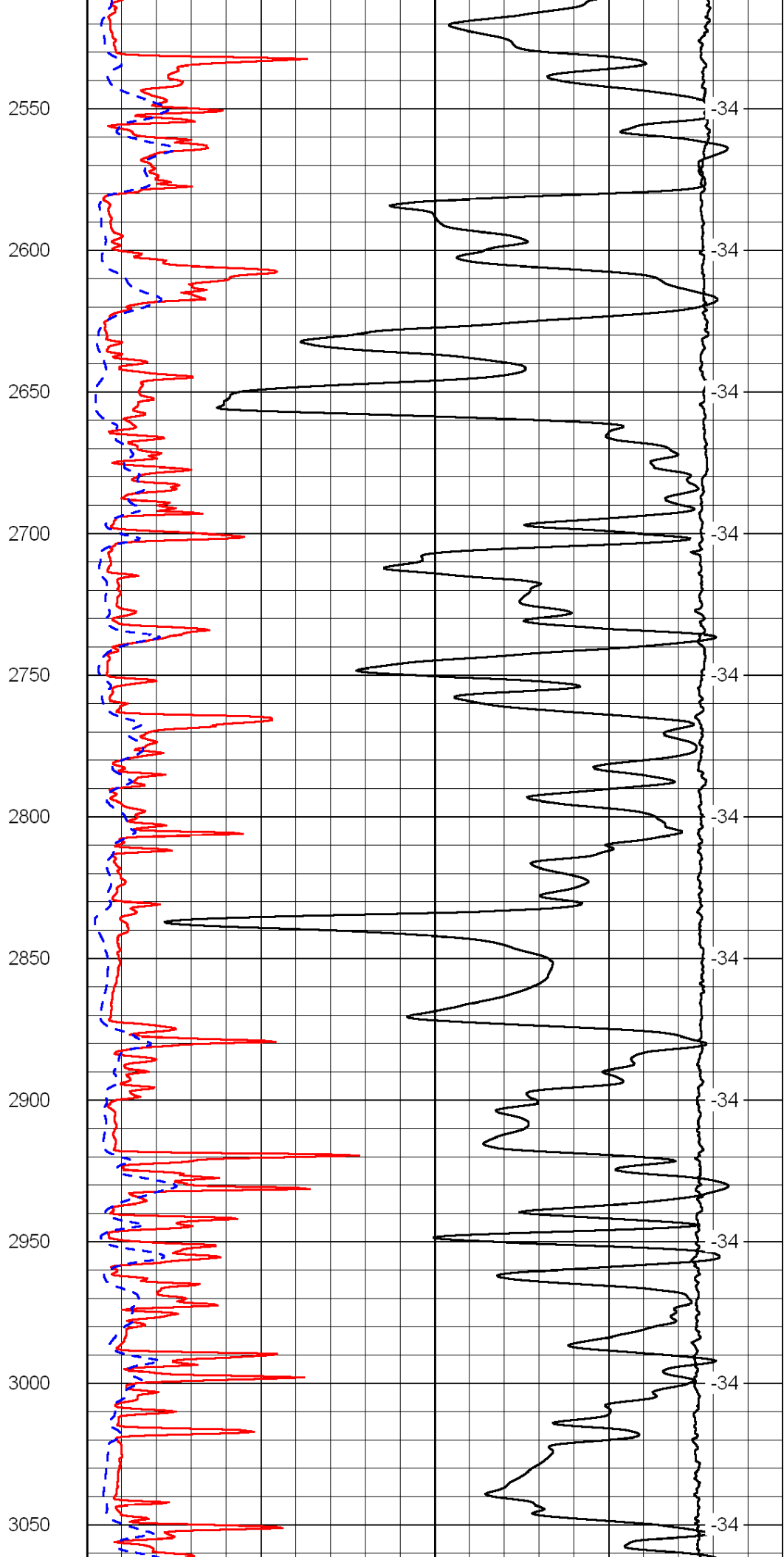
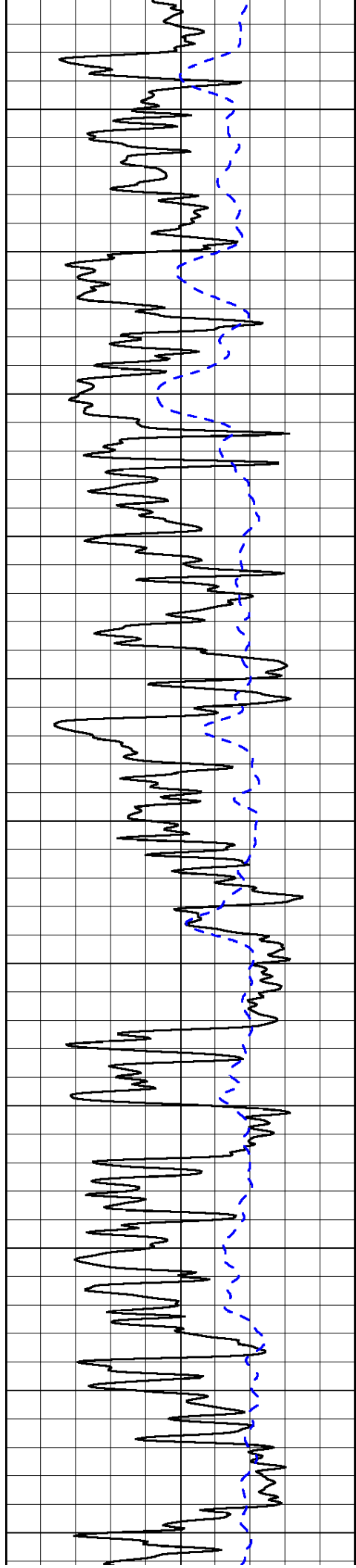
50	Shallow Resistivity	500
50	Deep Resistivity	500

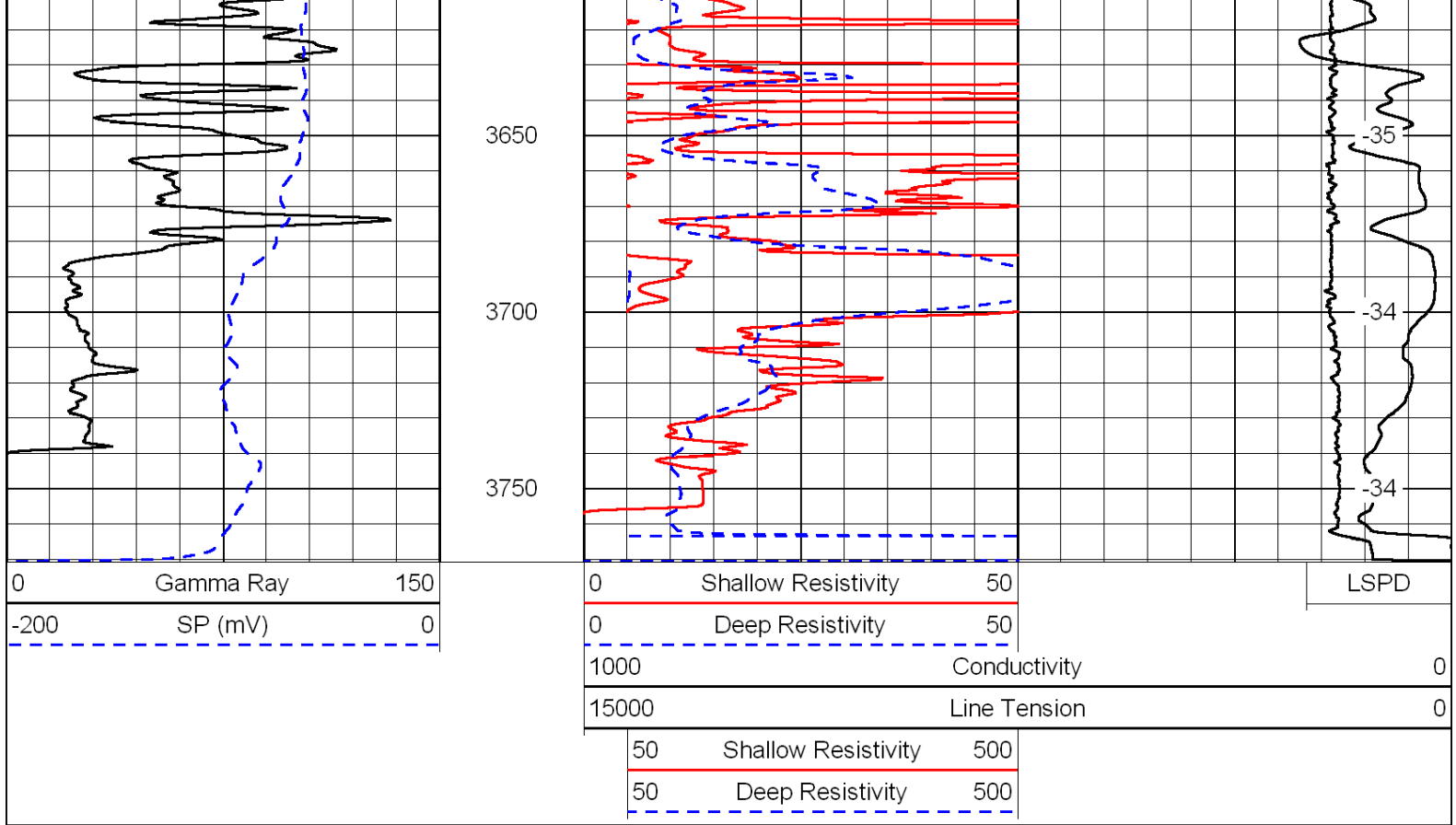




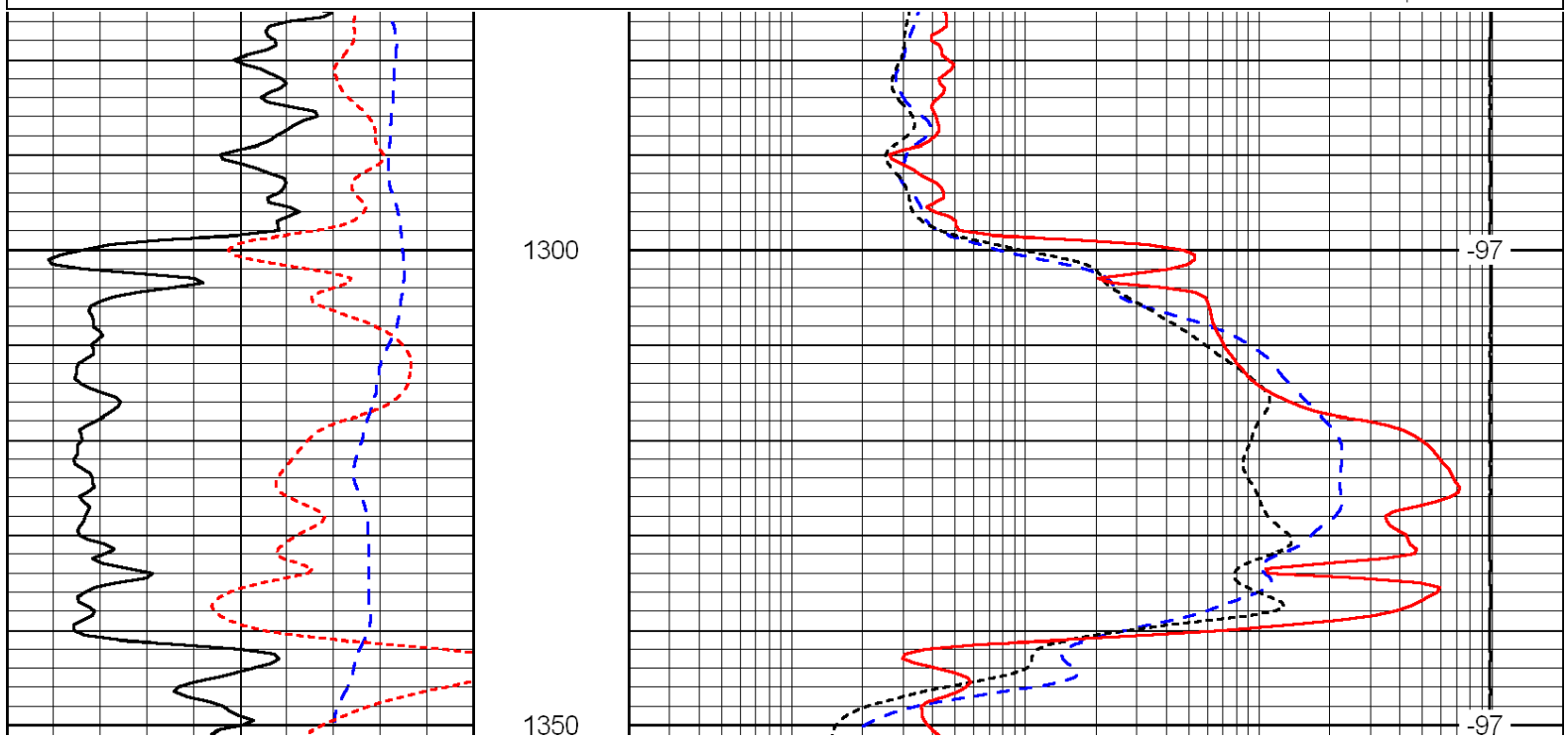
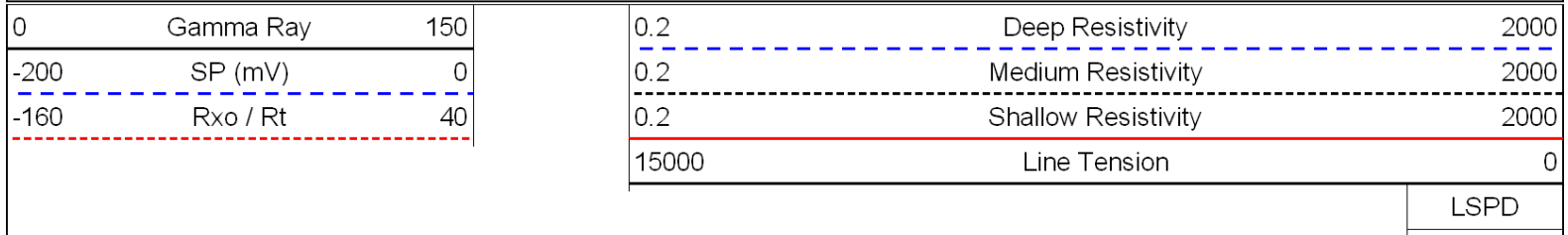


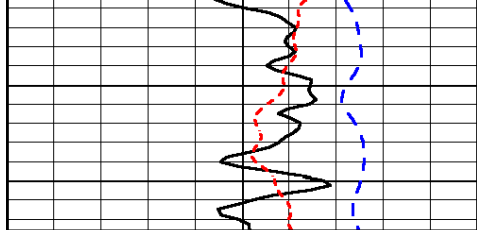




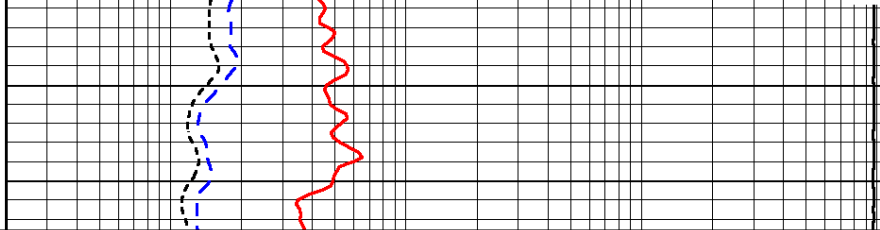


Database File: c:\warrior\data\tdi_yarnell-gross unit #1\tdihd.db
 Dataset Pathname: dil/tdimain
 Presentation Format: dil
 Dataset Creation: Tue Aug 02 20:25:43 2011
 Charted by: Depth in Feet scaled 1:240





0	Gamma Ray	150
-200	SP (mV)	0
-160	Rxo / Rt	40



0.2	Deep Resistivity	2000
0.2	Medium Resistivity	2000
0.2	Shallow Resistivity	2000
15000	Line Tension	0

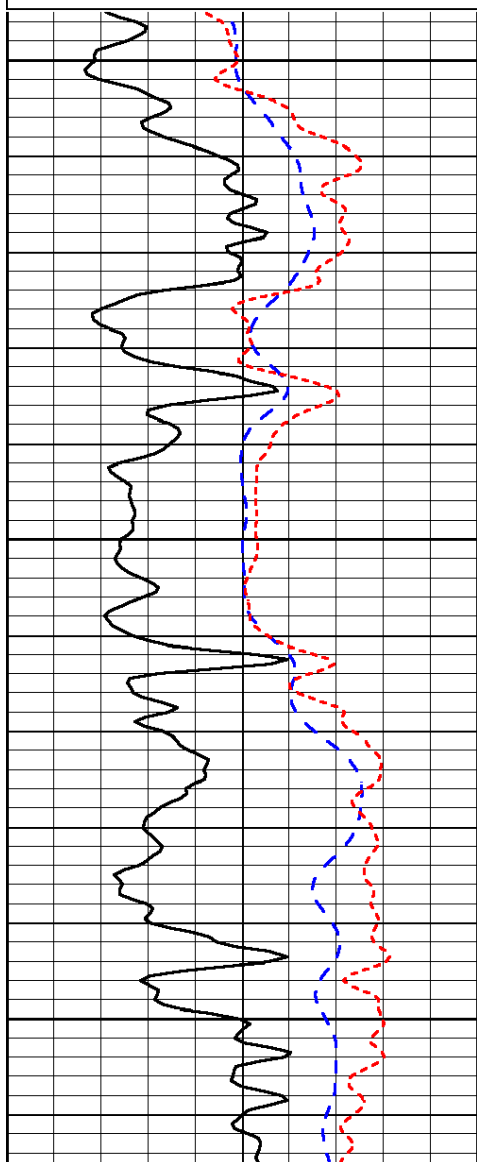
LSPD

Database File: c:\warrior\data\tdi_yarnell-gross unit #1\tdihd.db
 Dataset Pathname: dil/tdimain
 Presentation Format: dil
 Dataset Creation: Tue Aug 02 20:25:43 2011
 Charted by: Depth in Feet scaled 1:240

0	Gamma Ray	150
-200	SP (mV)	0
-160	Rxo / Rt	40

0.2	Deep Resistivity	2000
0.2	Medium Resistivity	2000
0.2	Shallow Resistivity	2000
15000	Line Tension	0

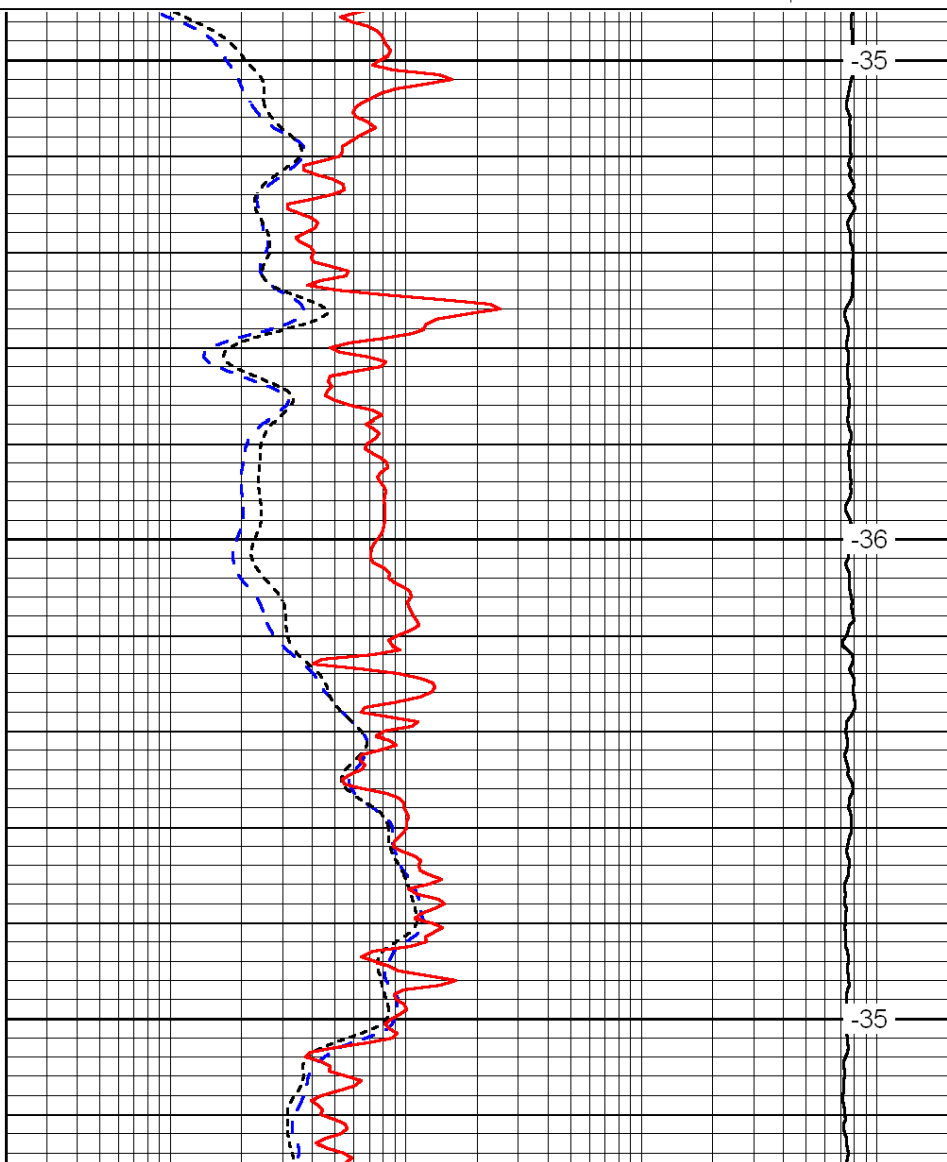
LSPD



2200

2250

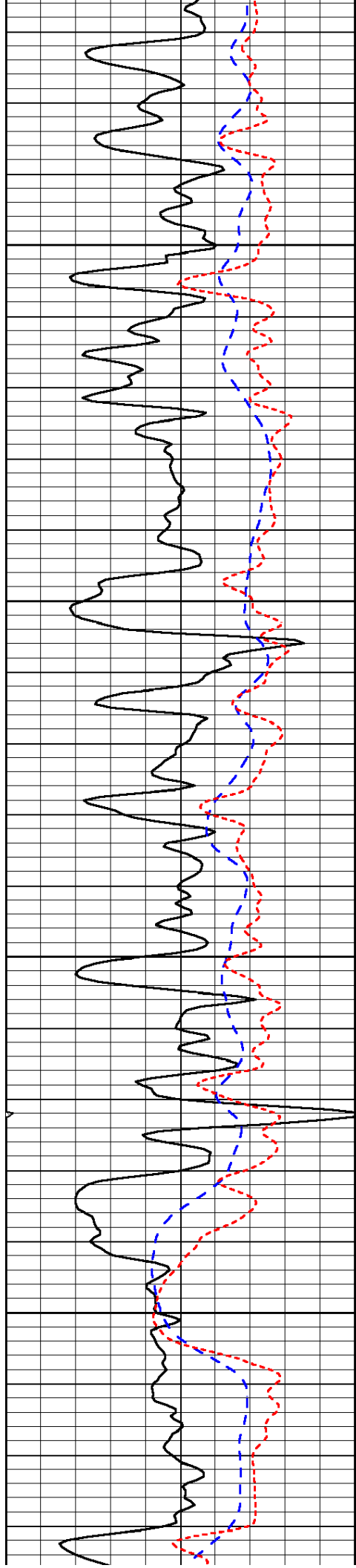
2300



-35

-36

-35

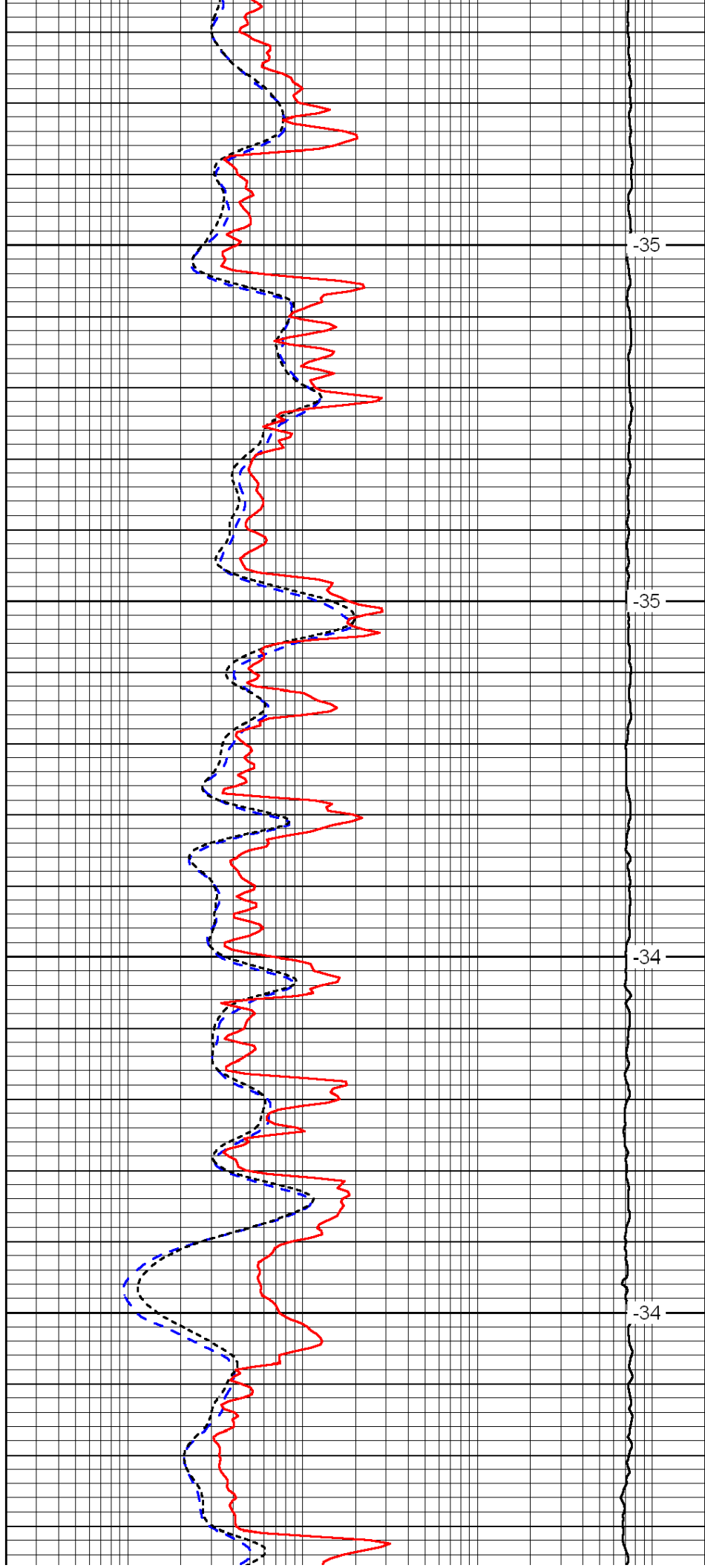


2350

2400

2450

2500

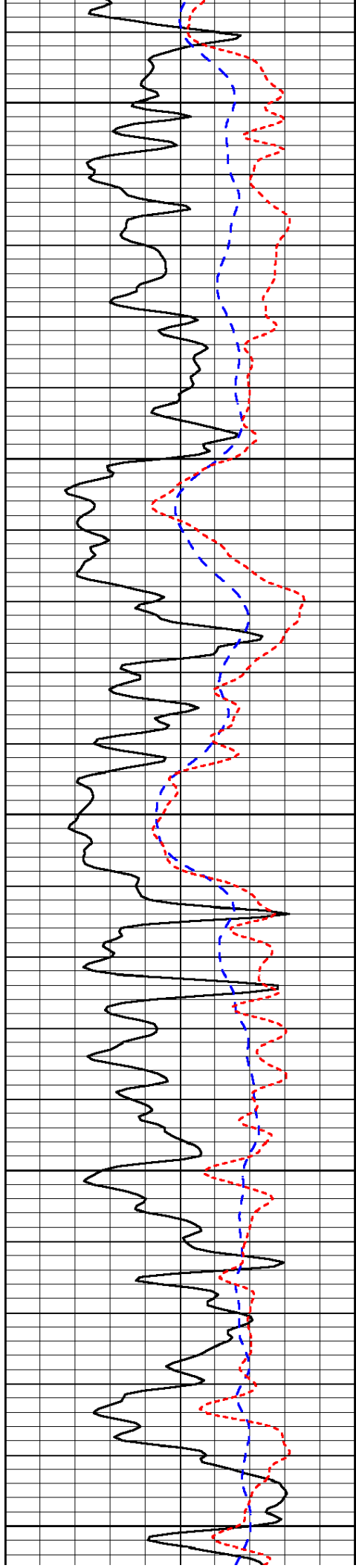


-35

-35

-34

-34



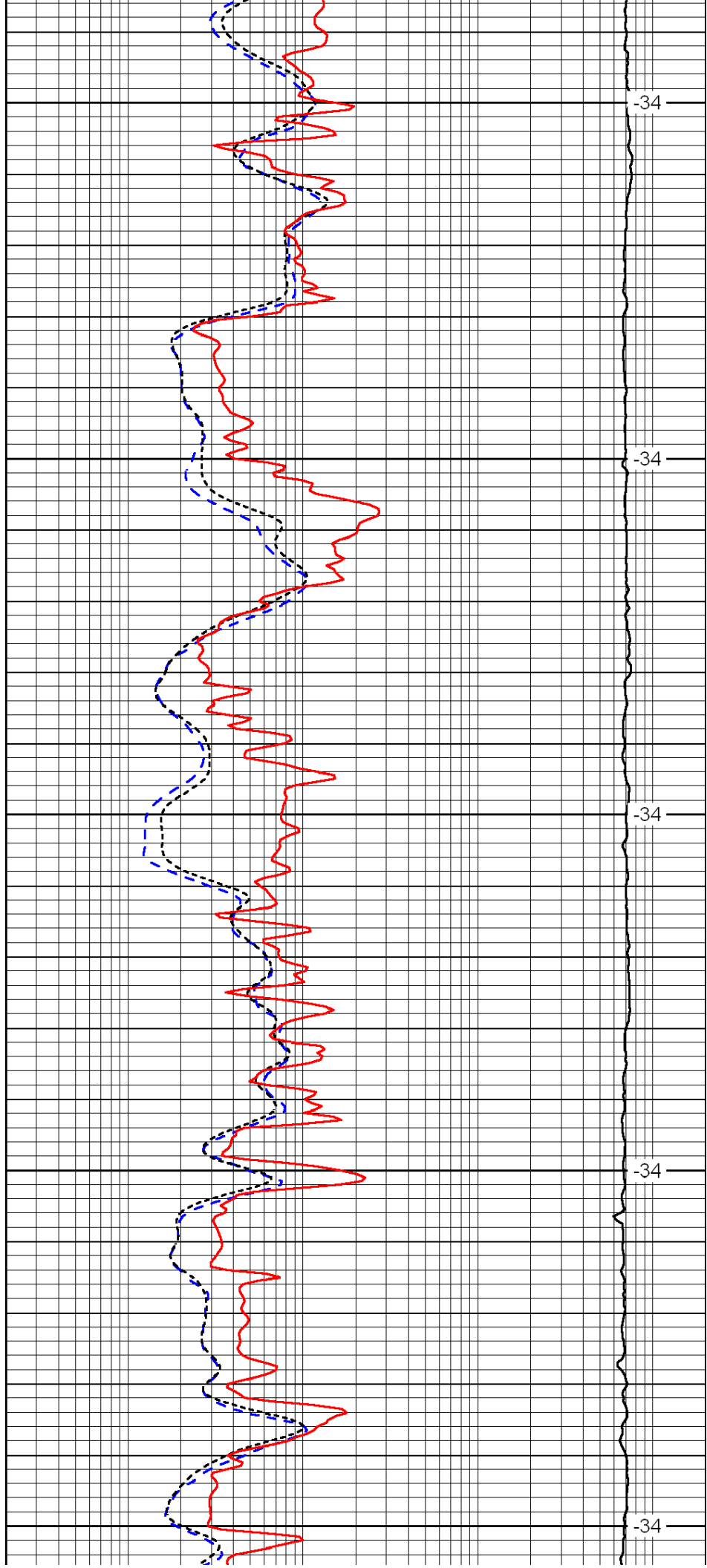
2550

2600

2650

2700

2750



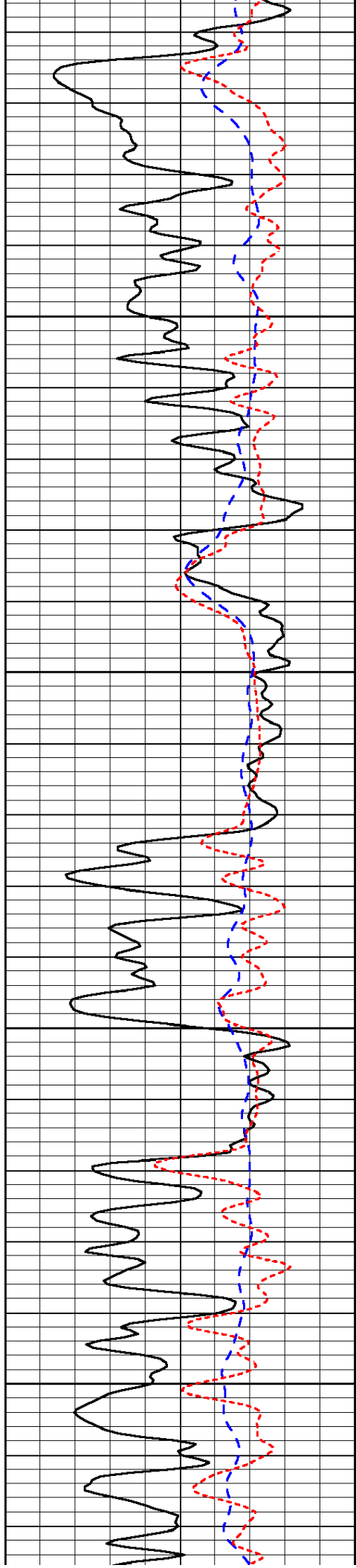
-34

-34

-34

-34

-34

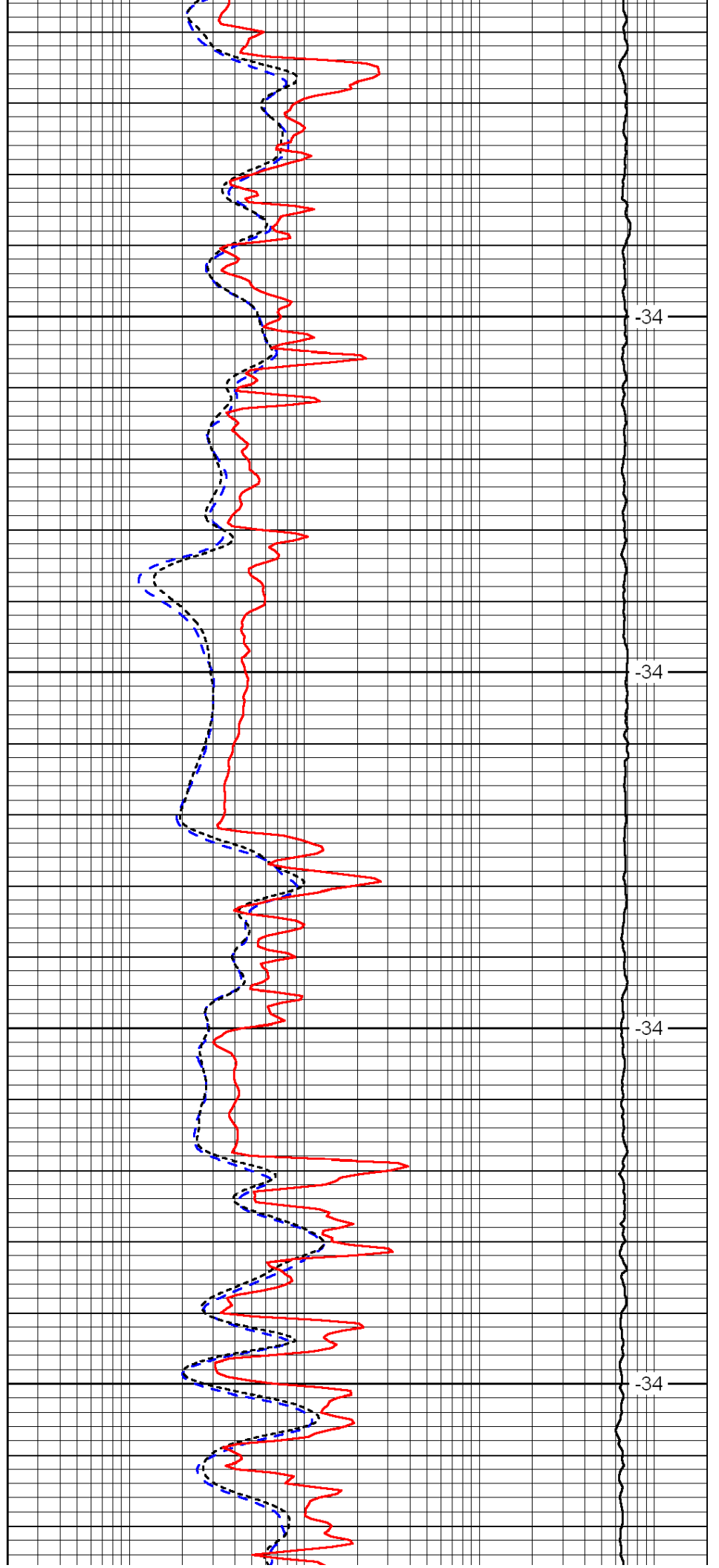


2800

2850

2900

2950

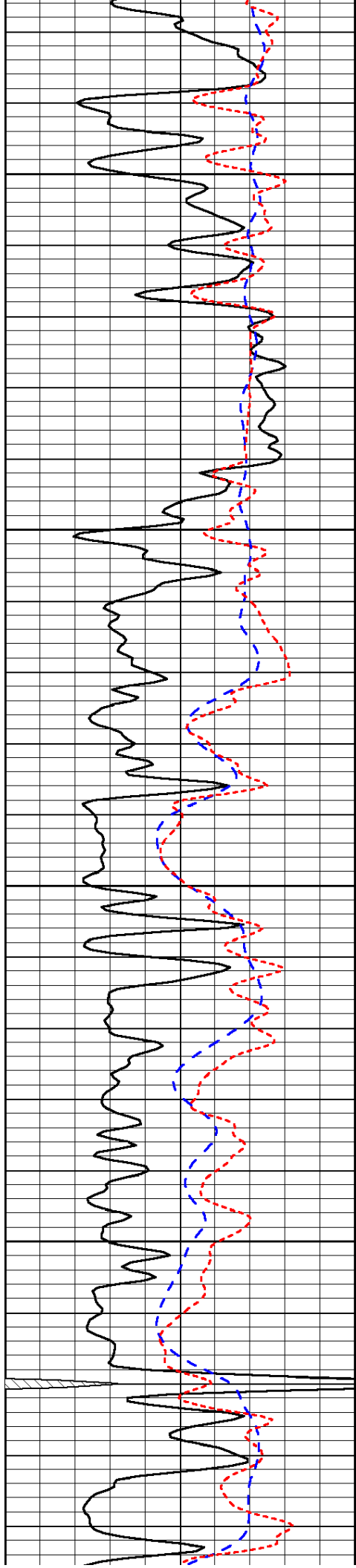


-34

-34

-34

-34

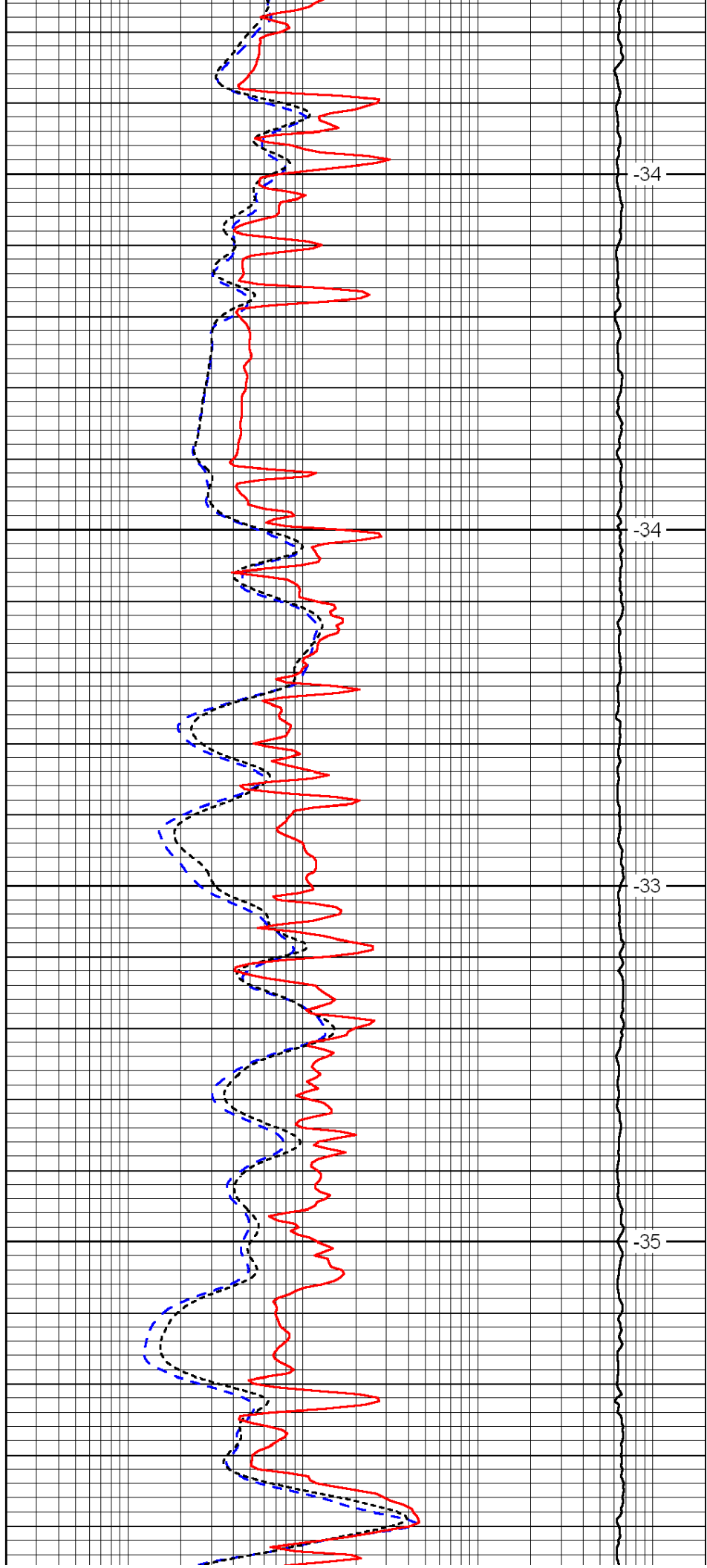


3000

3050

3100

3150

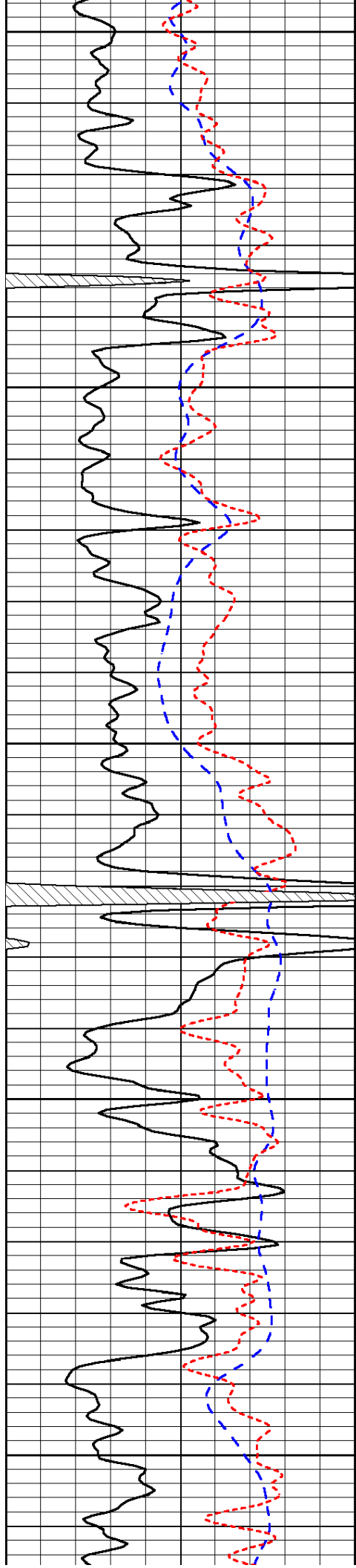


-34

-34

-33

-35



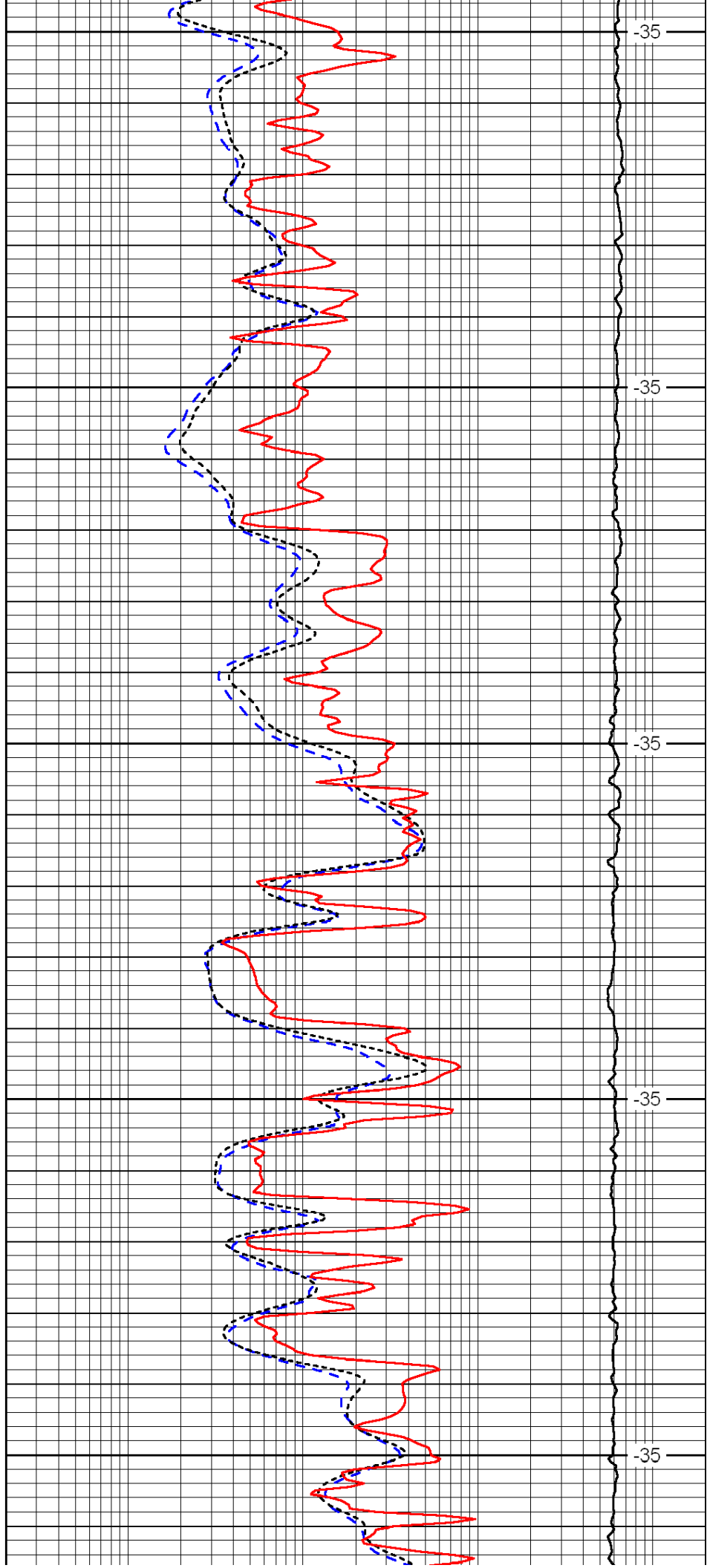
3200

3250

3300

3350

3400



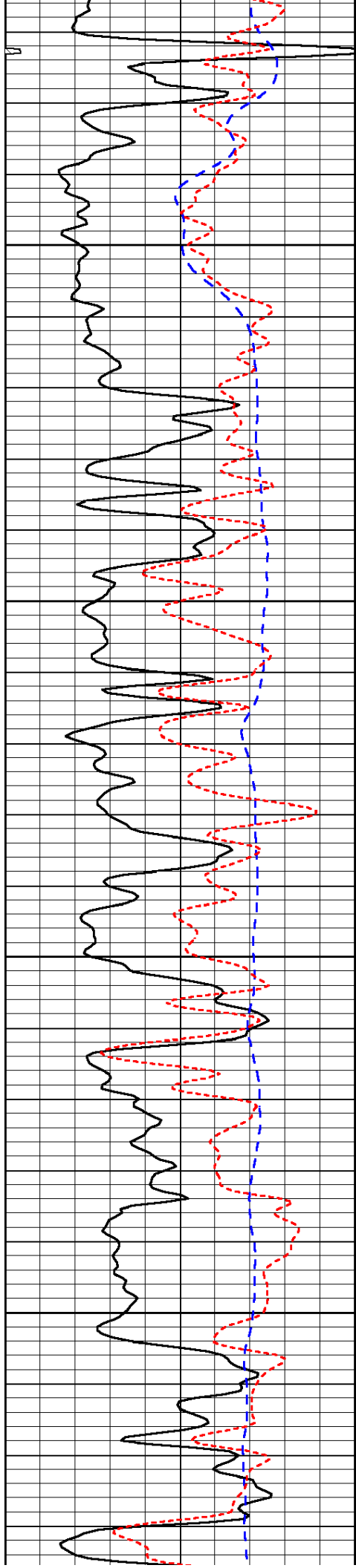
-35

-35

-35

-35

-35

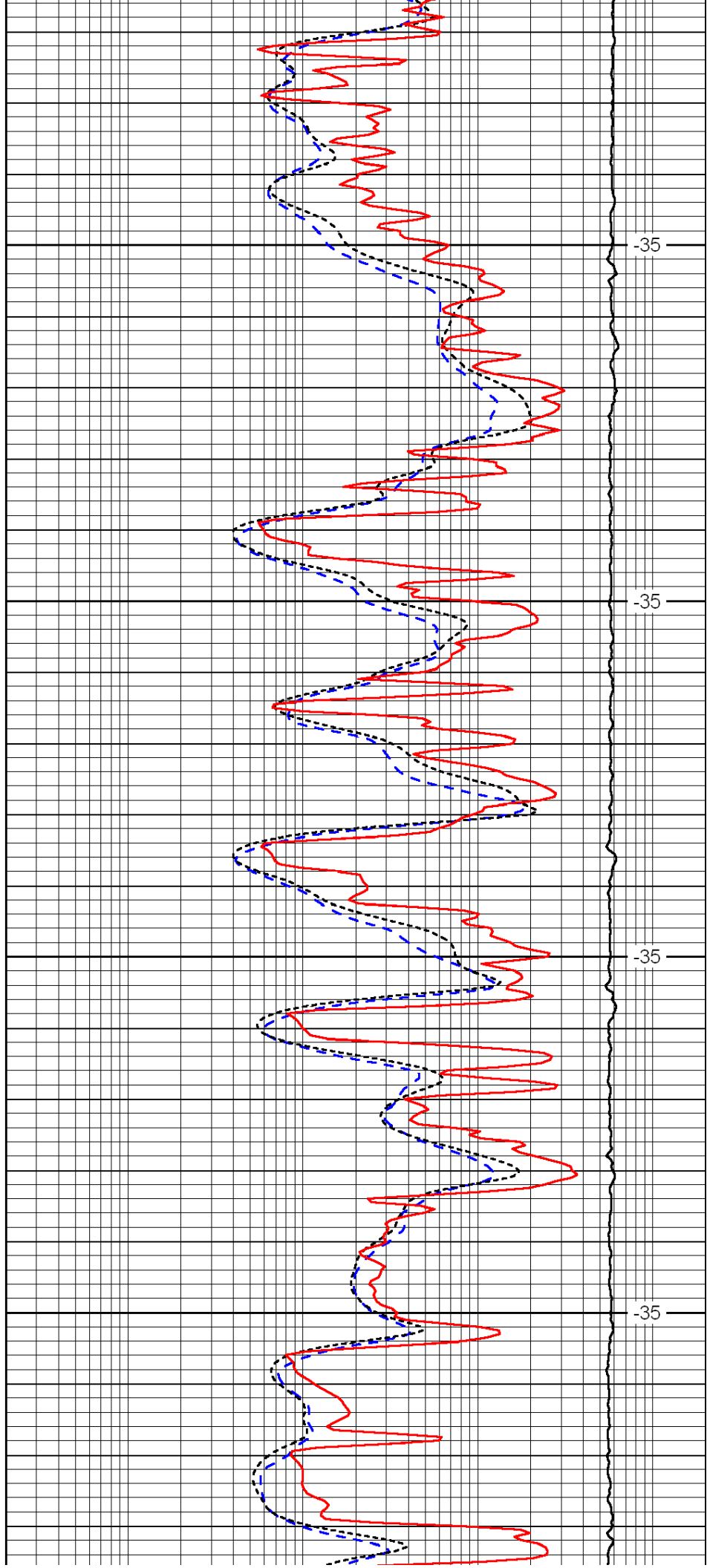


3450

3500

3550

3600

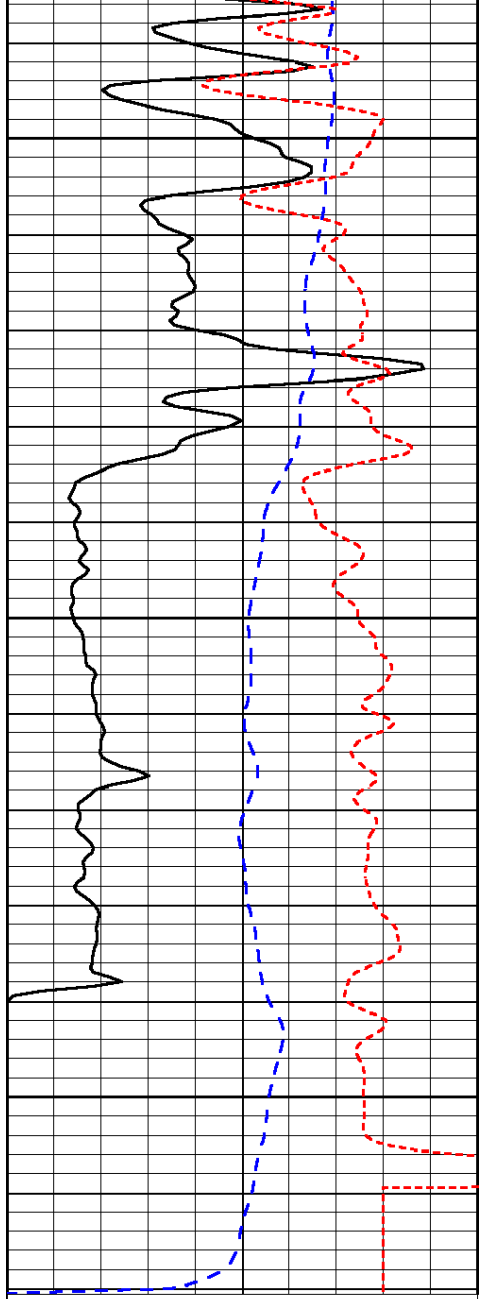


-35

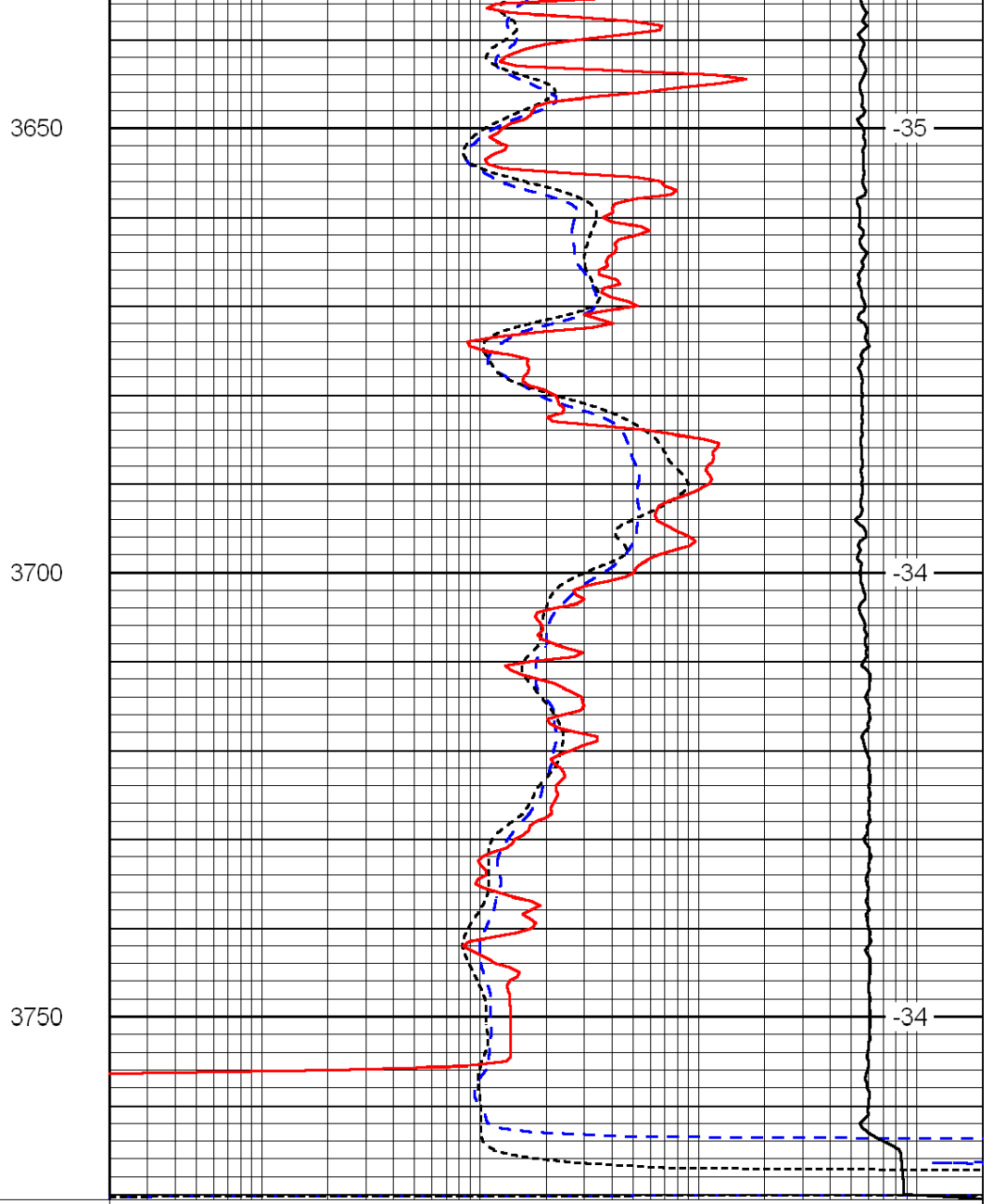
-35

-35

-35



0	Gamma Ray	150
-200	SP (mV)	0
-160	Rxo / Rt	40



0.2	Deep Resistivity	2000
0.2	Medium Resistivity	2000
0.2	Shallow Resistivity	2000
15000	Line Tension	0

LSPD