



DIGITAL LOG (785) 625-3858

Microresistivity Log

API No.	15-051-26163-00-00	
Company	TDL, Inc.	
Well	Yarnell-Gross Unit #1	
Field	Reichert	
County	Elis	State
Location	SE NE SE SW 780' FSL / 2550' FWL	
Sec: 4	Twp: 15S	Rge: 19W
Permanent Datum	Ground Level	Elevation 2045
Log Measured From	Kelly Bushing	10 Ft. Above Perm. Datum
Drilling Measured From	Kelly Bushing	
		Other Services CNL / CDL DIL
		Elevation K.B. 2055 D.F. 2045 G.L. 2045

Date	8/2/2011
Run Number	Two
Depth Driller	3765
Depth Logger	3763
Bottom Logged Interval	3762
Top Log Interval	2200
Casing Driller	8.625 @ 422
Casing Logger	422
Bit Size	7.875
Type Fluid in Hole	Chemical
Salinity, ppm CL	3000
Density / Viscosity	9.3 60
pH / Fluid Loss	10.5 7.8
Source of Sample	Flowline
Rm @ Meas. Temp	0.90 @ 85
Rmf @ Meas. Temp	0.68 @ 85
Rmc @ Meas. Temp	1.22 @ 85
Source of Rmf / Rmc	Charts
Rm @ BHT	0.67 @ 114
Operating Rig Time	4 Hours
Max Rec. Temp. F	114
Equipment Number	15
Location	Hays
Recorded By	R. Barnhart
Witnessed By	Herb Deines

<<< Fold Here >>>

All interpretations are opinions based on inferences from electrical or other measurements and we cannot and do not guarantee the accuracy or correctness of any interpretation, and we shall not, except in the case of gross or willful negligence on our part, be liable or responsible for any loss, costs, damages, or expenses incurred or sustained by anyone resulting from any interpretation made by any of our officers, agents or employees. These interpretations are also subject to our general terms and conditions set out in our current Price Schedule.

Comments

Thank you for using Log-Tech, Inc.
 (785) 625-3858

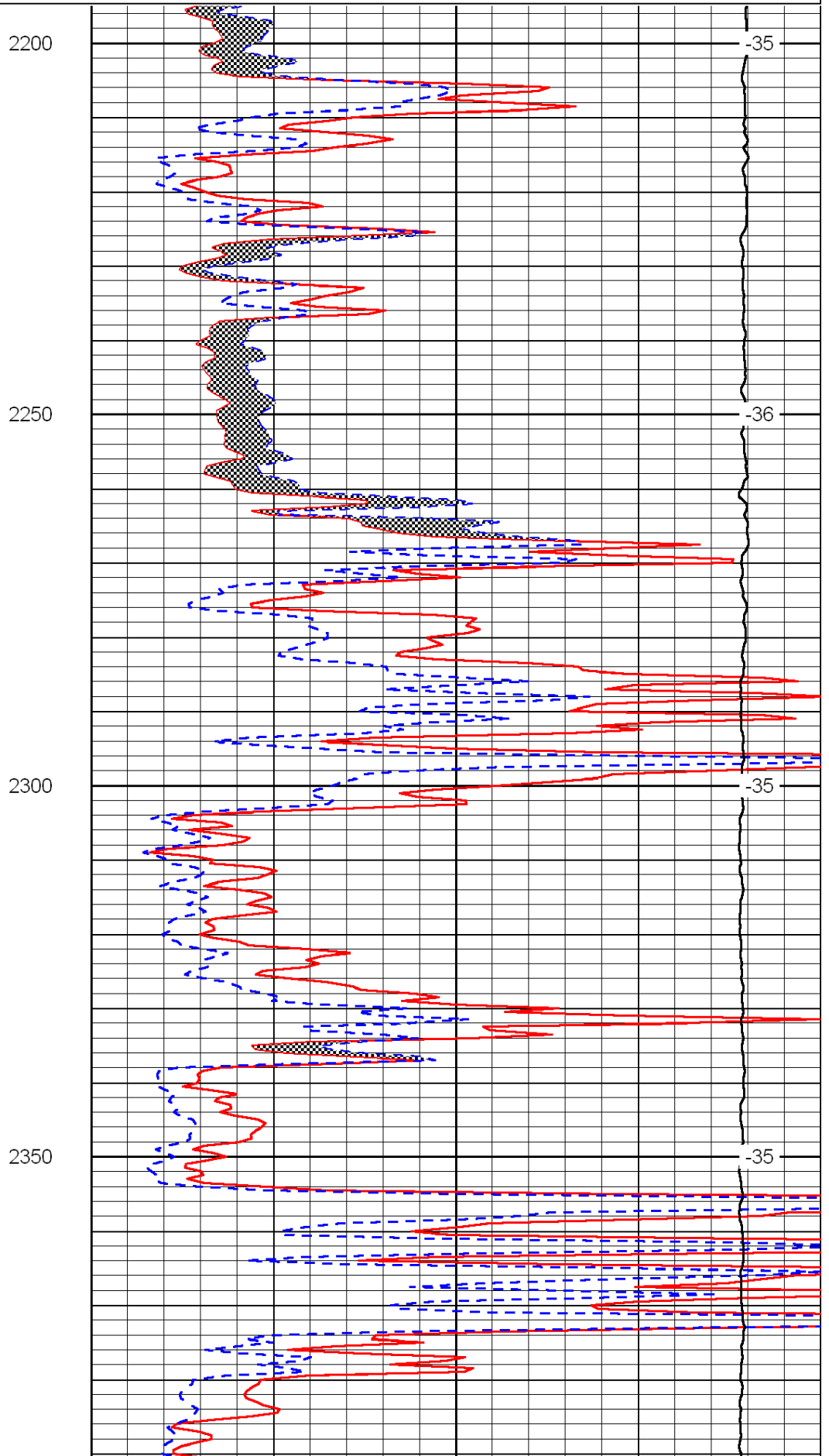
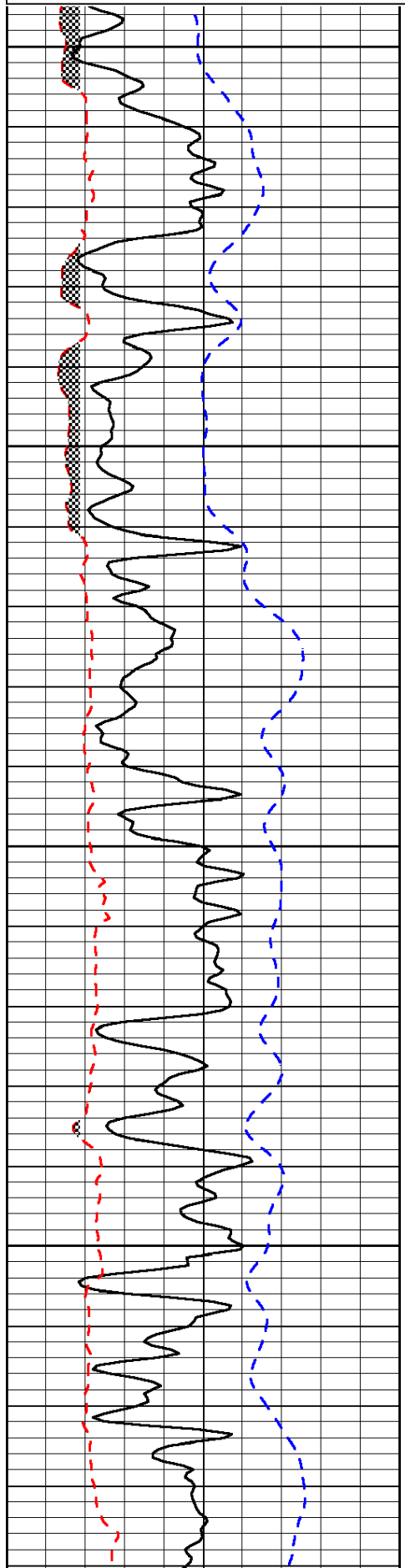
 Antonino, KS:
 2W, 1S, 1/2W, N into

Database File: c:\warrior\data\tdi_yarnell-gross unit #1\tdihd.db
 Dataset Pathname: dil/tdimain
 Presentation Format: micro
 Dataset Creation: Tue Aug 02 20:25:43 2011
 Charted by: Depth in Feet scaled 1:240

0	Gamma Ray	150
6	Micro Log Caliper (GAPI)	16
-200	SP (mV)	0

0	Micro Inverse 1 X 1	40
0	Micro Normal 2"	40
15000	Line Weight	0

LSPD



2200

-35

2250

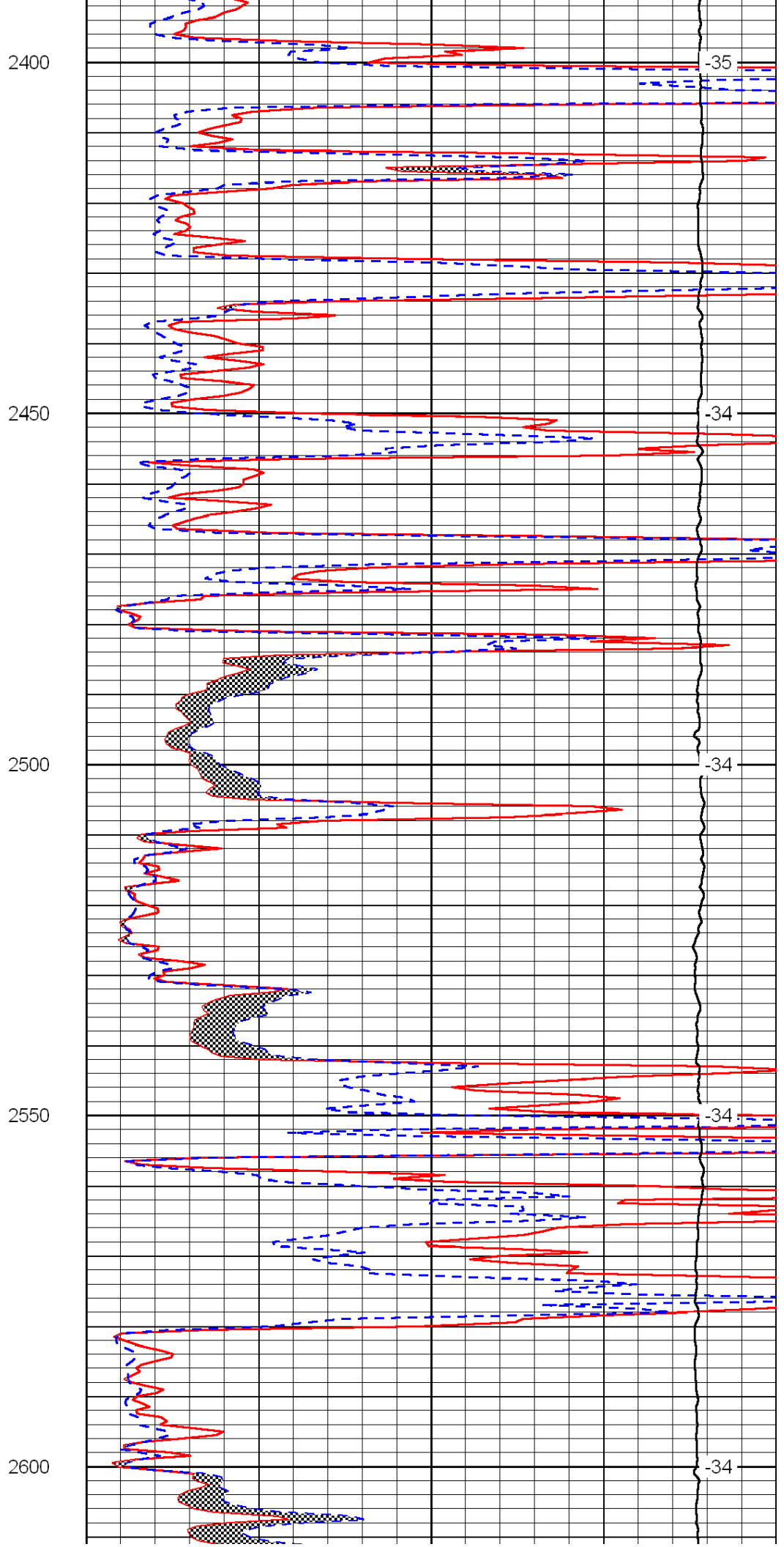
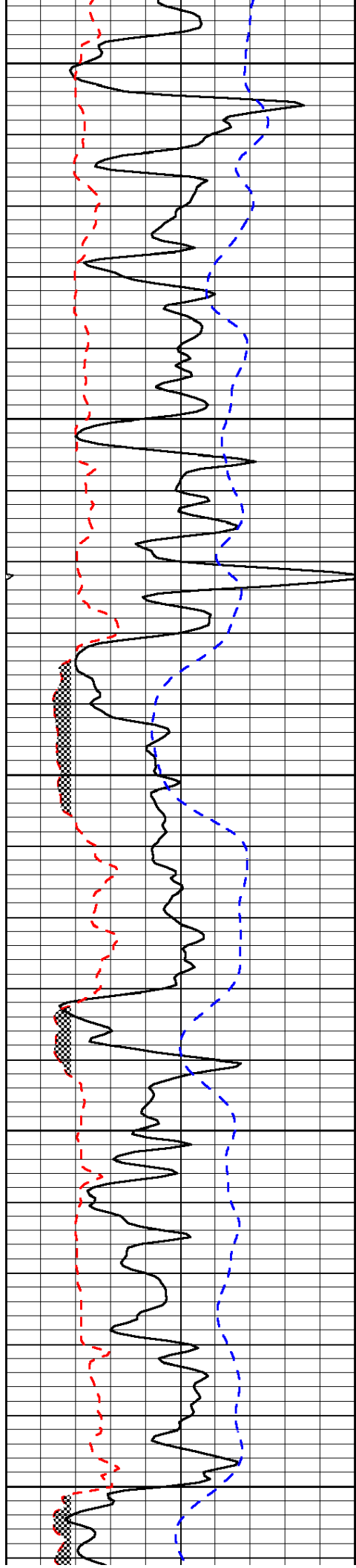
-36

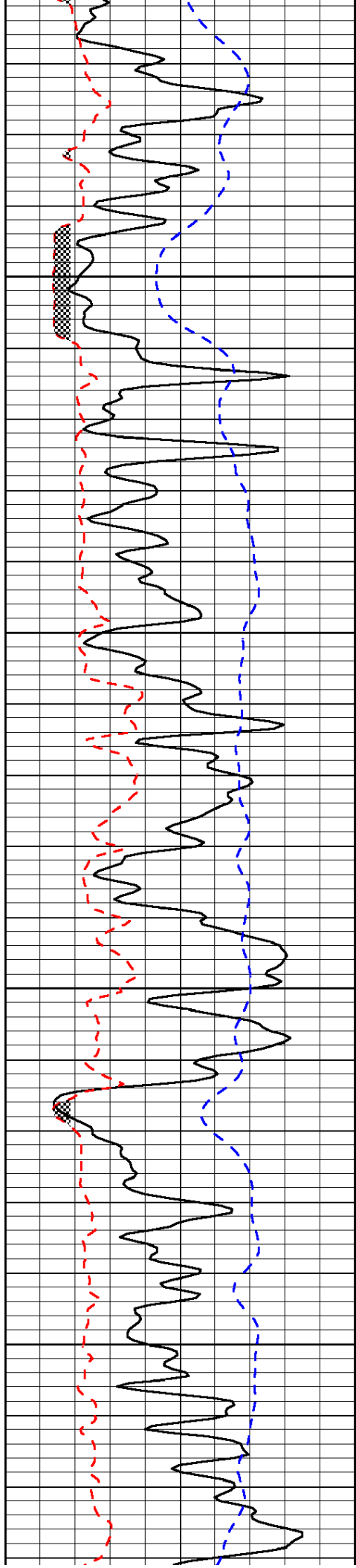
2300

-35

2350

-35



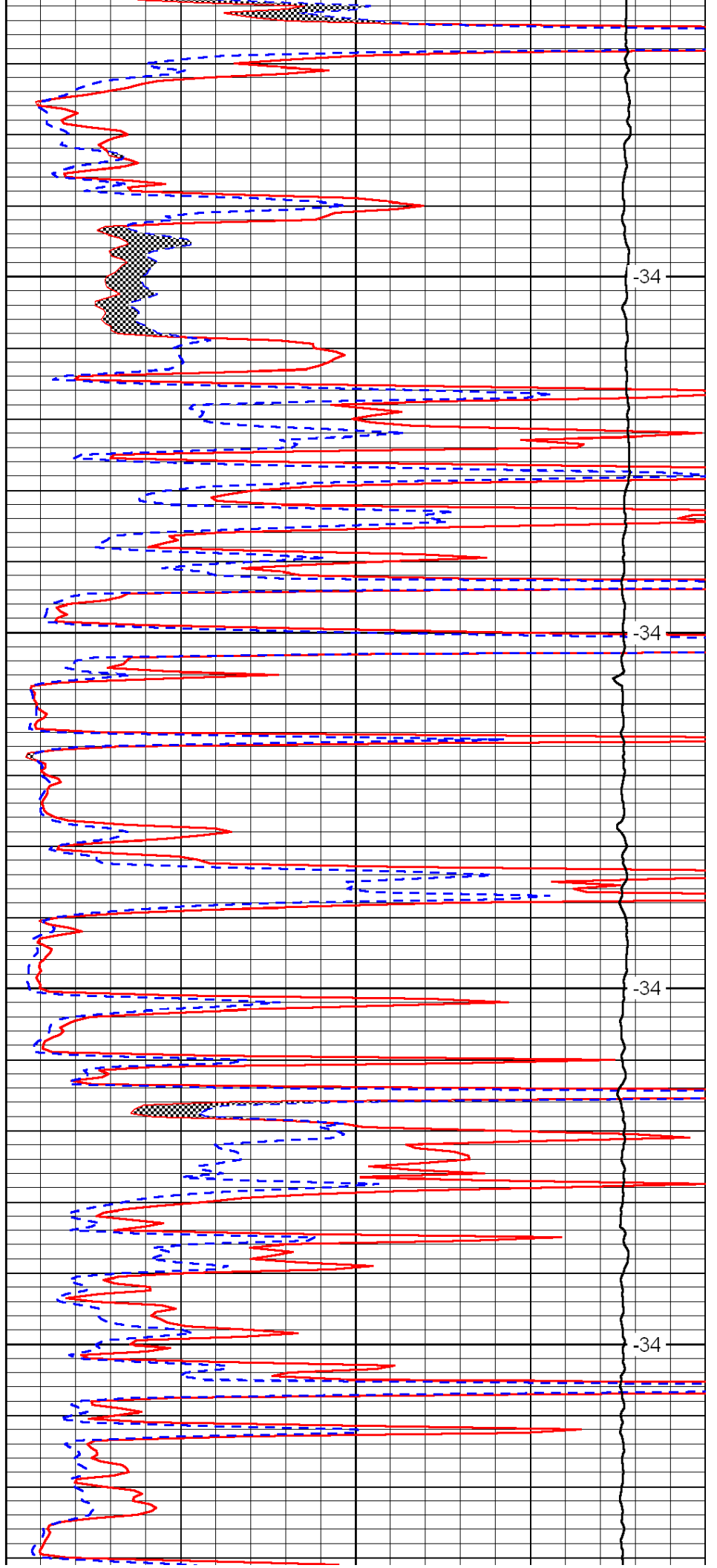


2650

2700

2750

2800

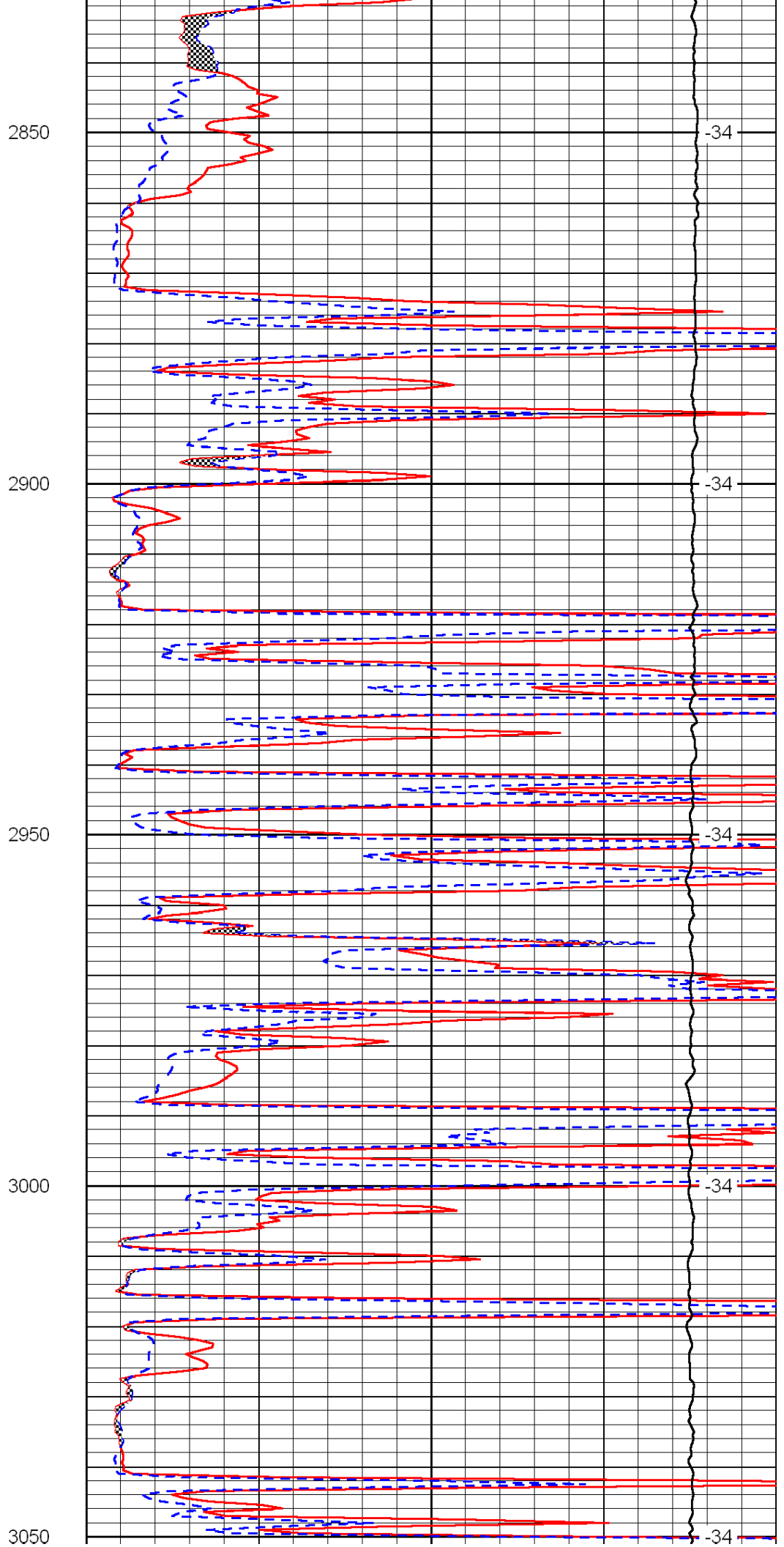
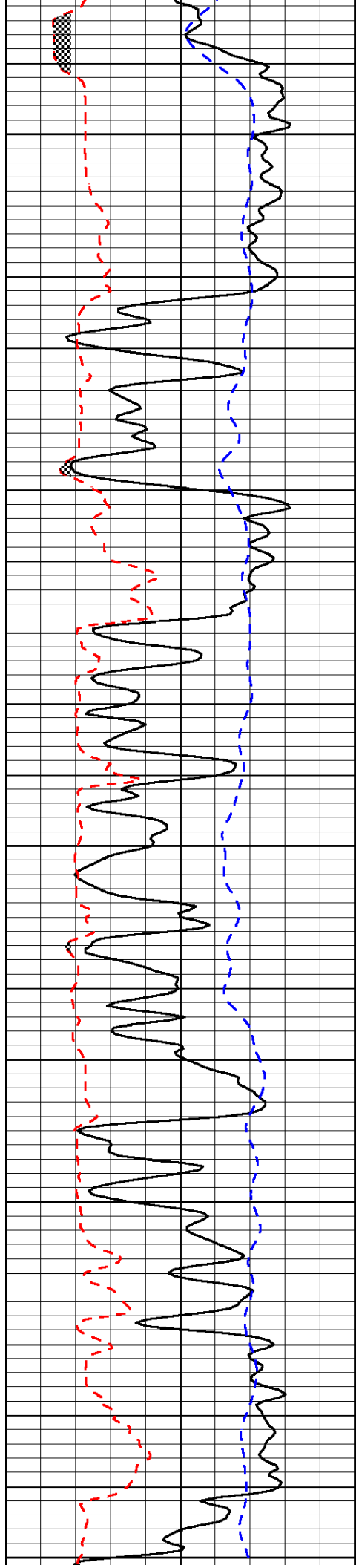


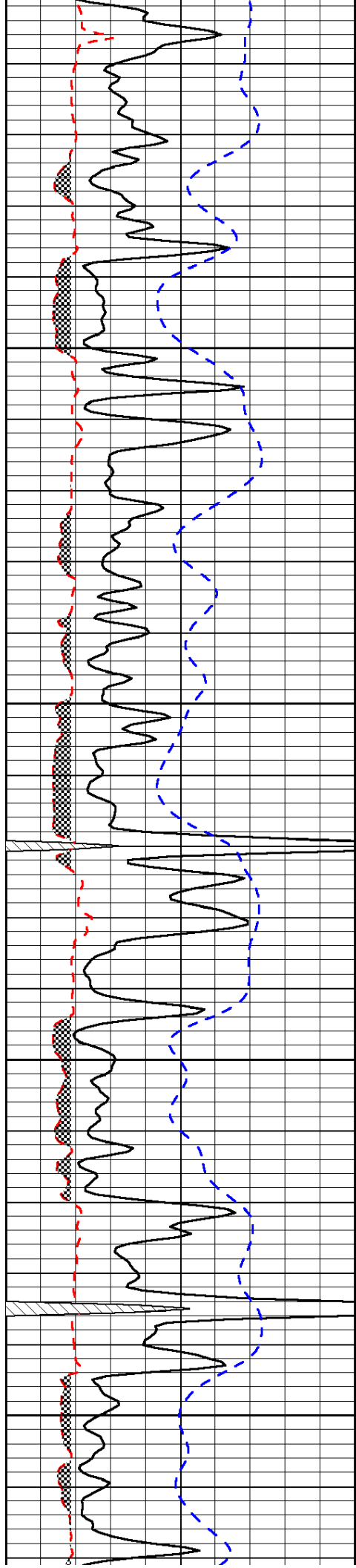
-34

-34

-34

-34



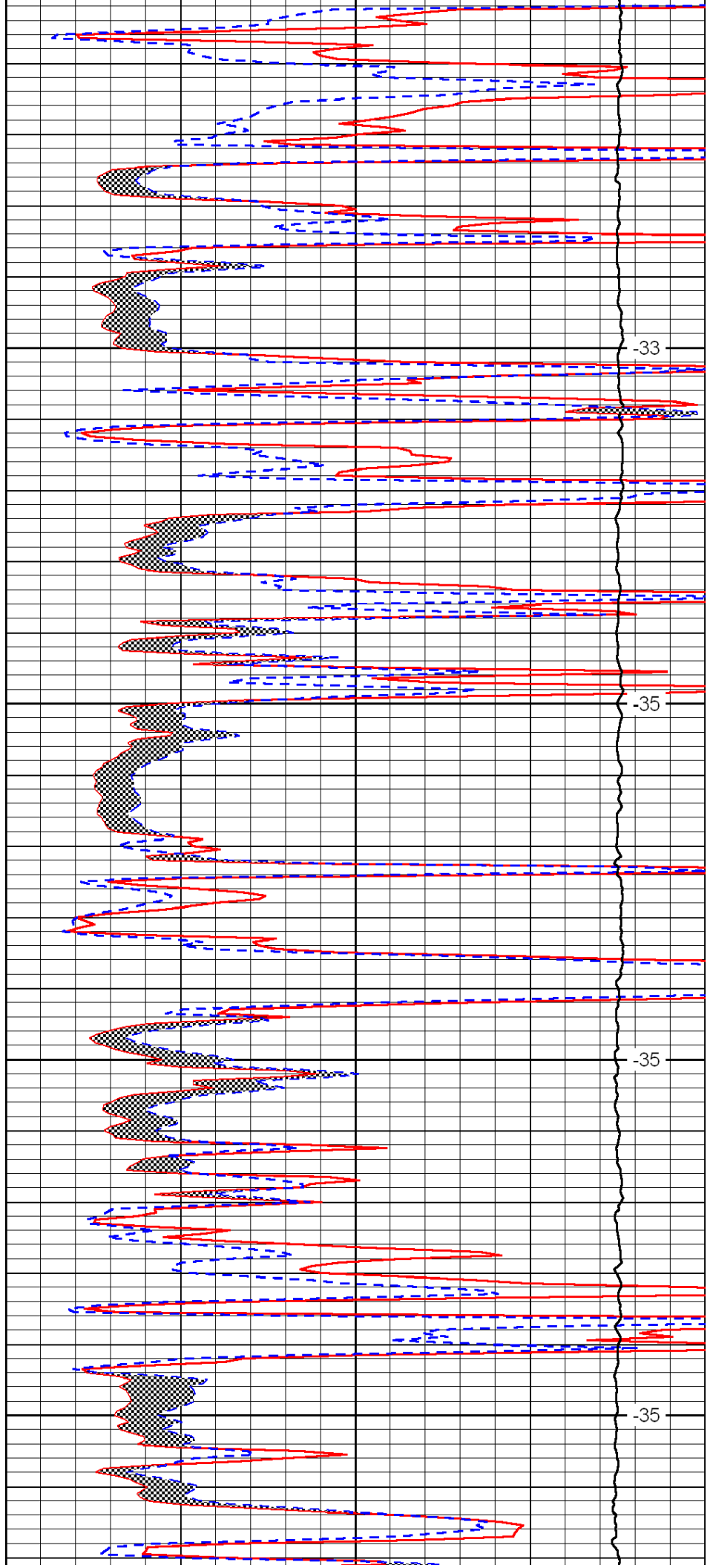


3100

3150

3200

3250

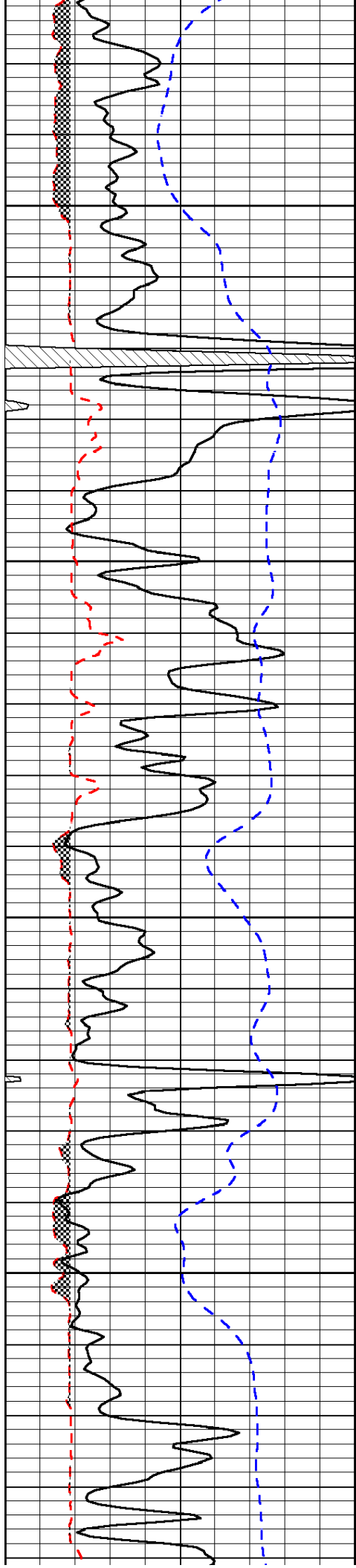


-33

-35

-35

-35

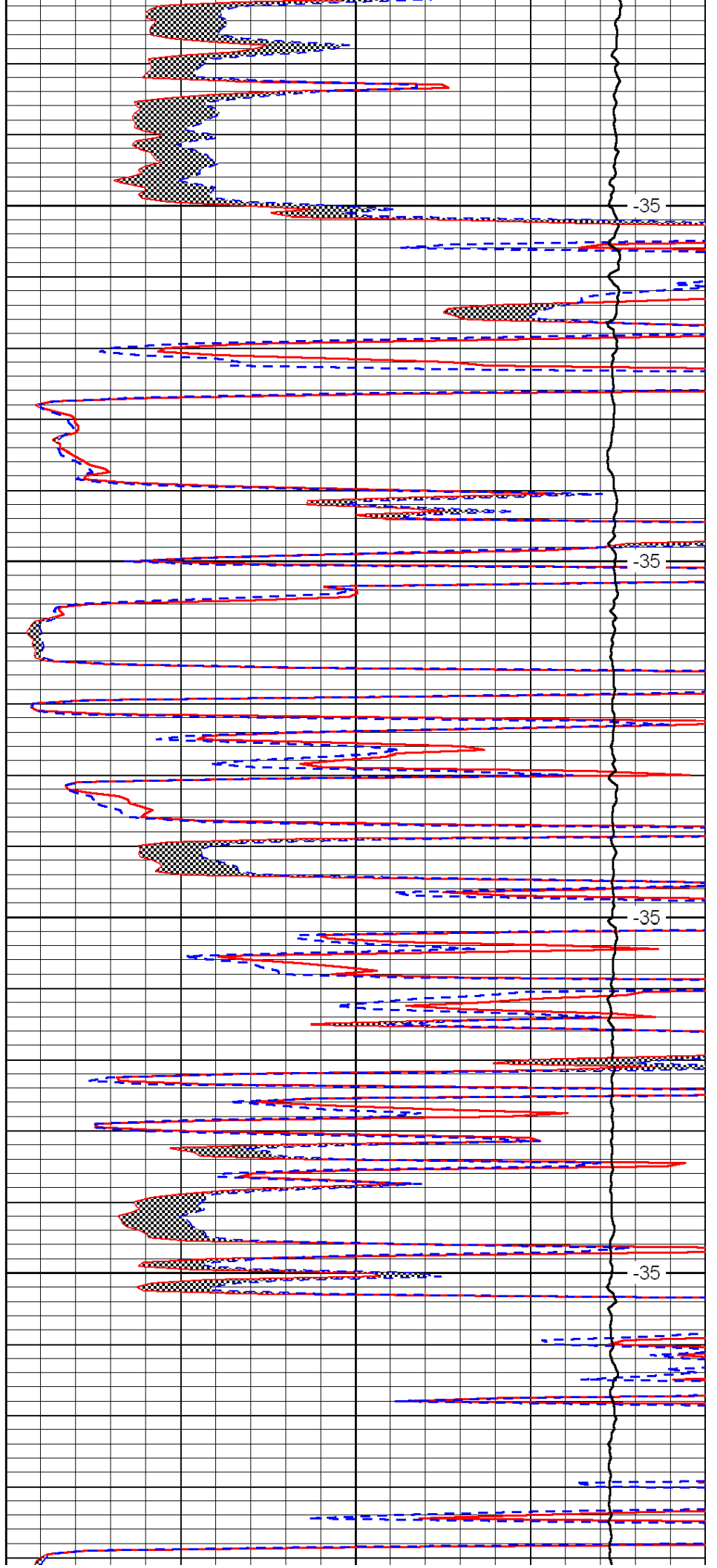


3300

3350

3400

3450

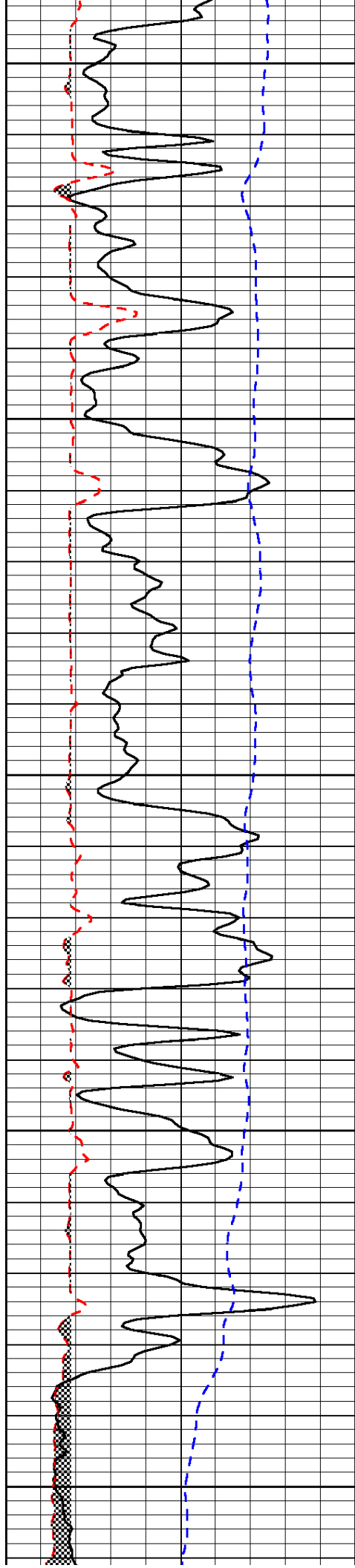


-35

-35

-35

-35



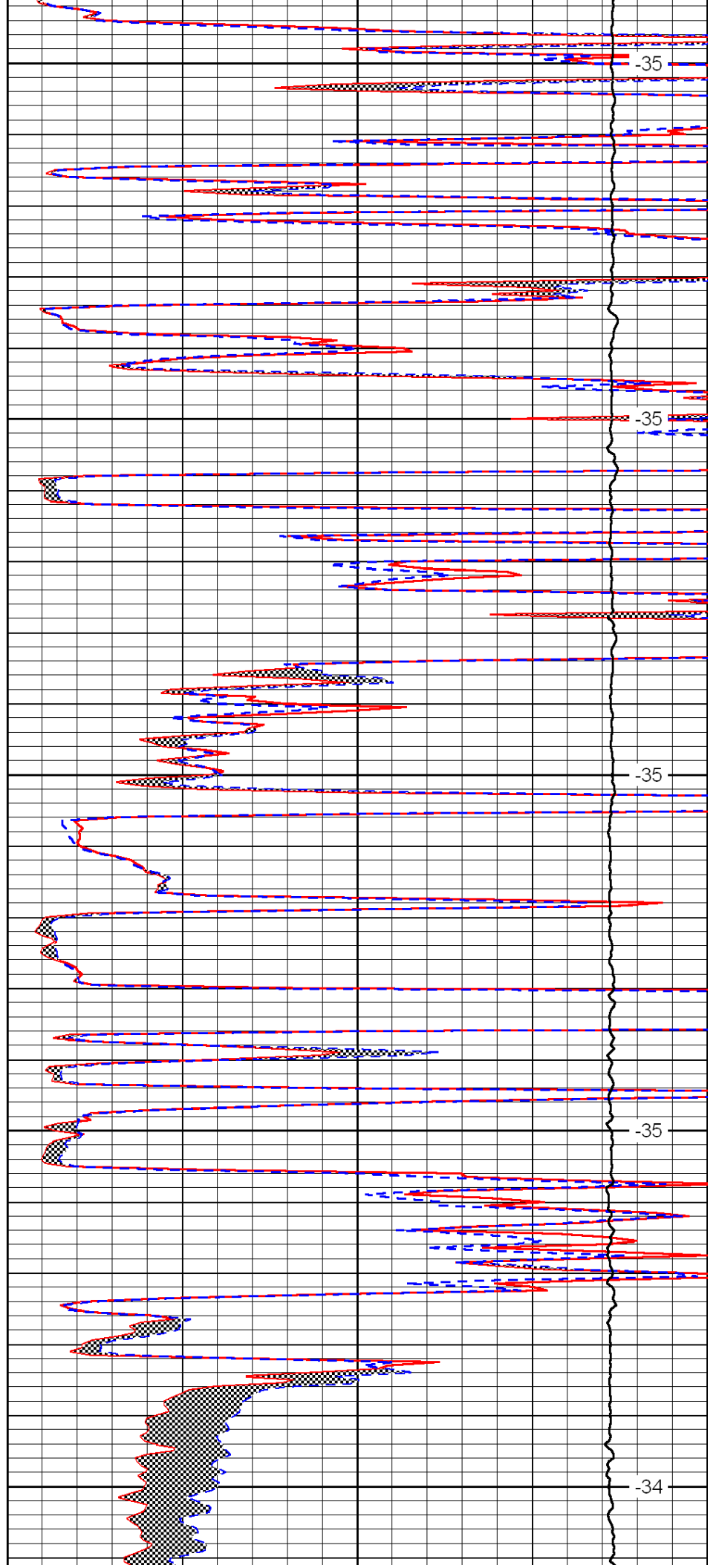
3500

3550

3600

3650

3700



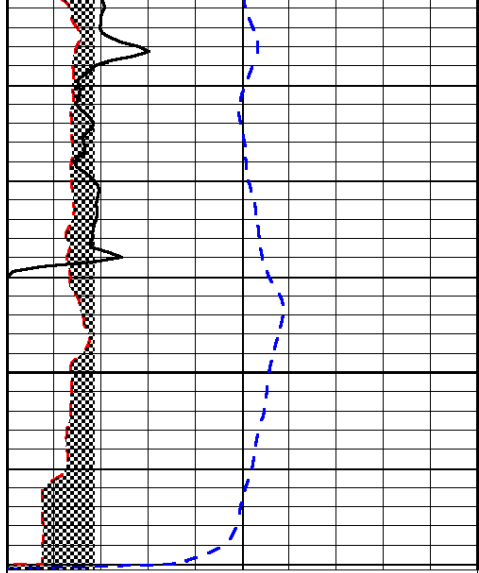
-35

-35

-35

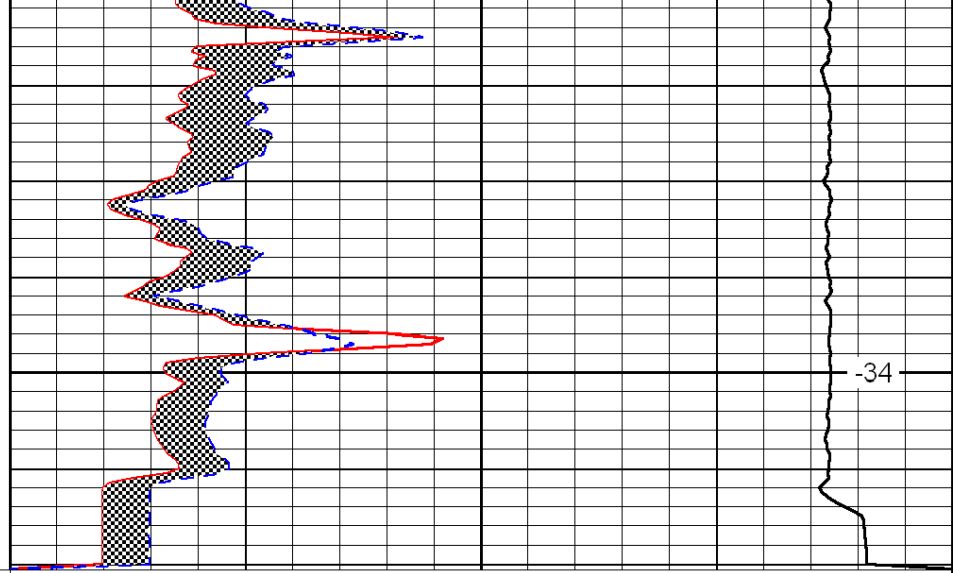
-35

-34



0	Gamma Ray	150
6	Micro Log Caliper (GAPI)	16
-200	SP (mV)	0

3750



0	Micro Inverse 1 X 1	40
0	Micro Normal 2''	40
15000	Line Weight	0

-34

LSPD