



DIGITAL LOG
(785) 625-3858

Dual Induction Log

API No.	15-007-23,695-00-00		
Company	Chieftain Oil Company, Inc.		
Well	Gillig No. 1		
Field	Aetna Gas Area		
County	Barber	State	Kansas
Location	2,240' FSL & 600' FEL		
Sec:	33	Twp:	34S
		Rge:	13W
Permanent Datum	Ground Level	Elevation	1588
Log Measured From	Kelly Bushing	8	Ft. Above Perm. Datum
Drilling Measured From	Kelly Bushing		
		Other Services	CNL/CDL
		Elevation	K.B. 1596
			D.F. 1588
			G.L. 1588

Date	6/17/2011
Run Number	One
Depth Driller	5578
Depth Logger	5576
Bottom Logged Interval	5575
Top Log Interval	300
Casing Driller	8.625 @ 333
Casing Logger	332
Bit Size	7.875
Type Fluid in Hole	Chemical
Salinity, ppm CL	8500
Density / Viscosity	9.35 57
pH / Fluid Loss	9.5 8.6
Source of Sample	Flowline
Rm @ Meas. Temp	.20 @ 84
Rmf @ Meas. Temp	.15 @ 84
Rmc @ Meas. Temp	.27 @ 84
Source of Rmf / Rmc	Charts
Rm @ BHT	.13 @ 132
Operating Rig Time	3 Hours
Max Rec. Temp. F	132
Equipment Number	10
Location	Hays
Recorded By	J. Long
Witnessed By	Jerry A. Smith

<<< Fold Here >>>

All interpretations are opinions based on inferences from electrical or other measurements and we cannot and do not guarantee the accuracy or correctness of any interpretation, and we shall not, except in the case of gross or willful negligence on our part, be liable or responsible for any loss, costs, damages, or expenses incurred or sustained by anyone resulting from any interpretation made by any of our officers, agents or employees. These interpretations are also subject to our general terms and conditions set out in our current Price Schedule.

Comments

Thank you for using Log-Tech, Inc.
(785) 625-3858

Hardtner, 2 West to Gyp Hill Road, 1 3/4 North, 1 West, 1/4 North, 1 West, South and West Into

Database File: c:\warrior\data\chieftain_gillig no. 1\chieftain_gillig_1hd.db
 Dataset Pathname: dil/chiefstck
 Presentation Format: dil2in
 Dataset Creation: Fri Jun 17 22:18:52 2011
 Charted by: Depth in Feet scaled 1:600

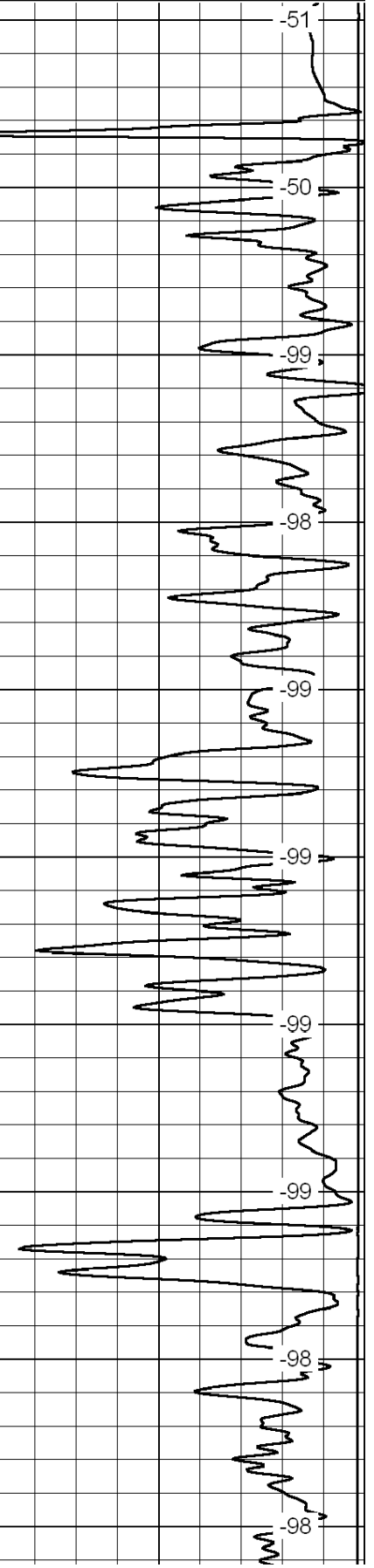
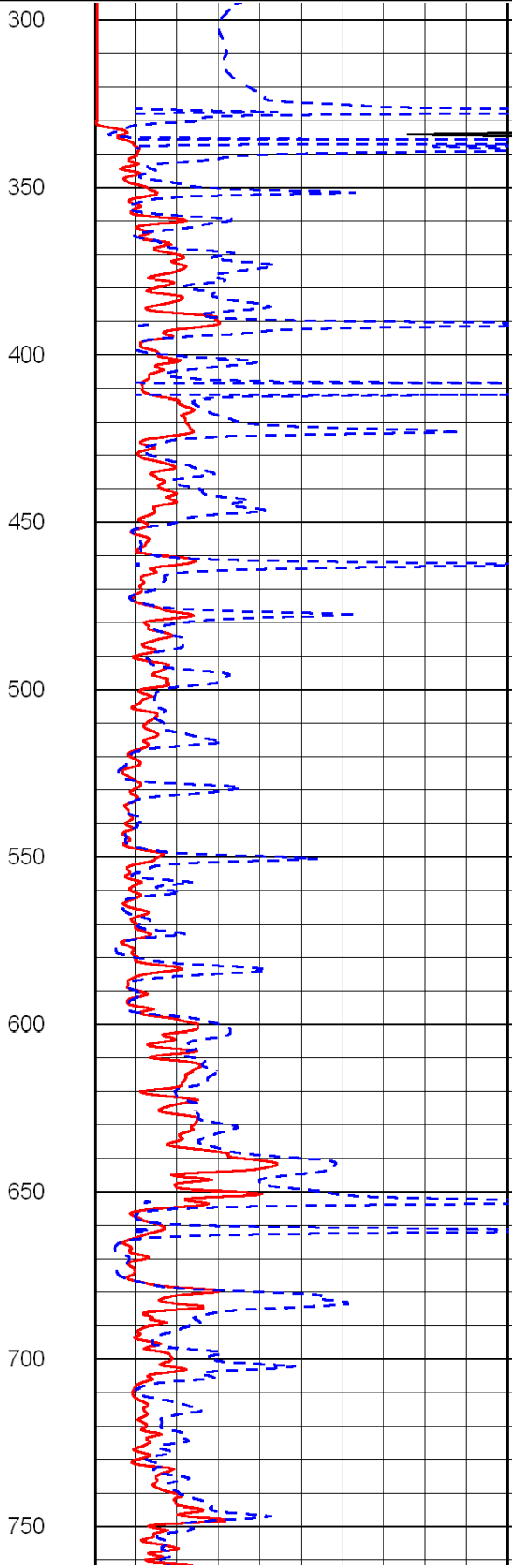
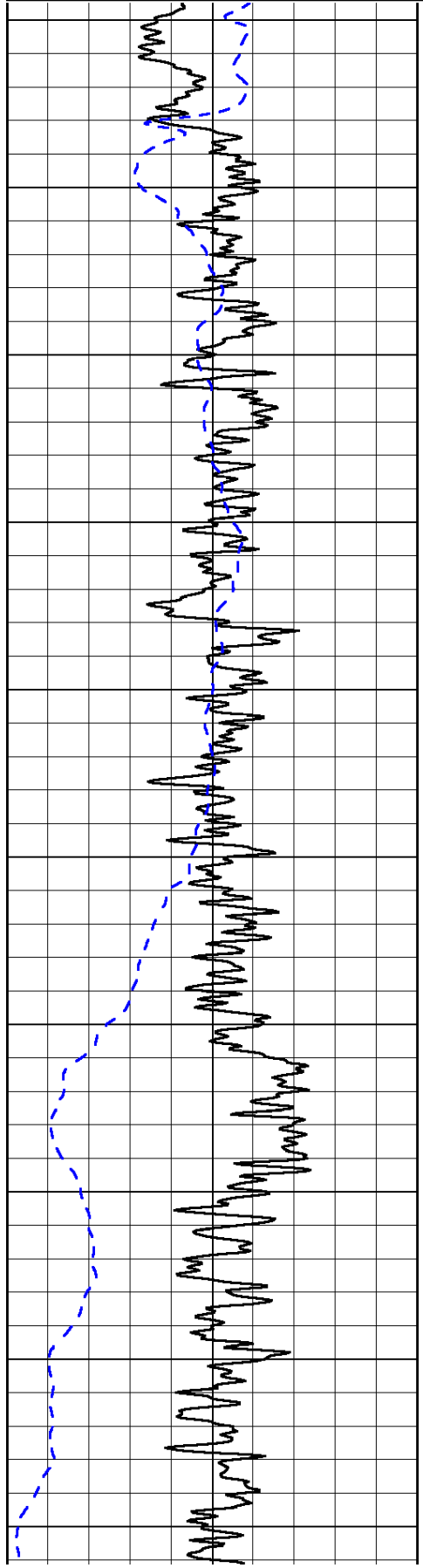
0	Gamma Ray	150
-200	SP (mV)	0

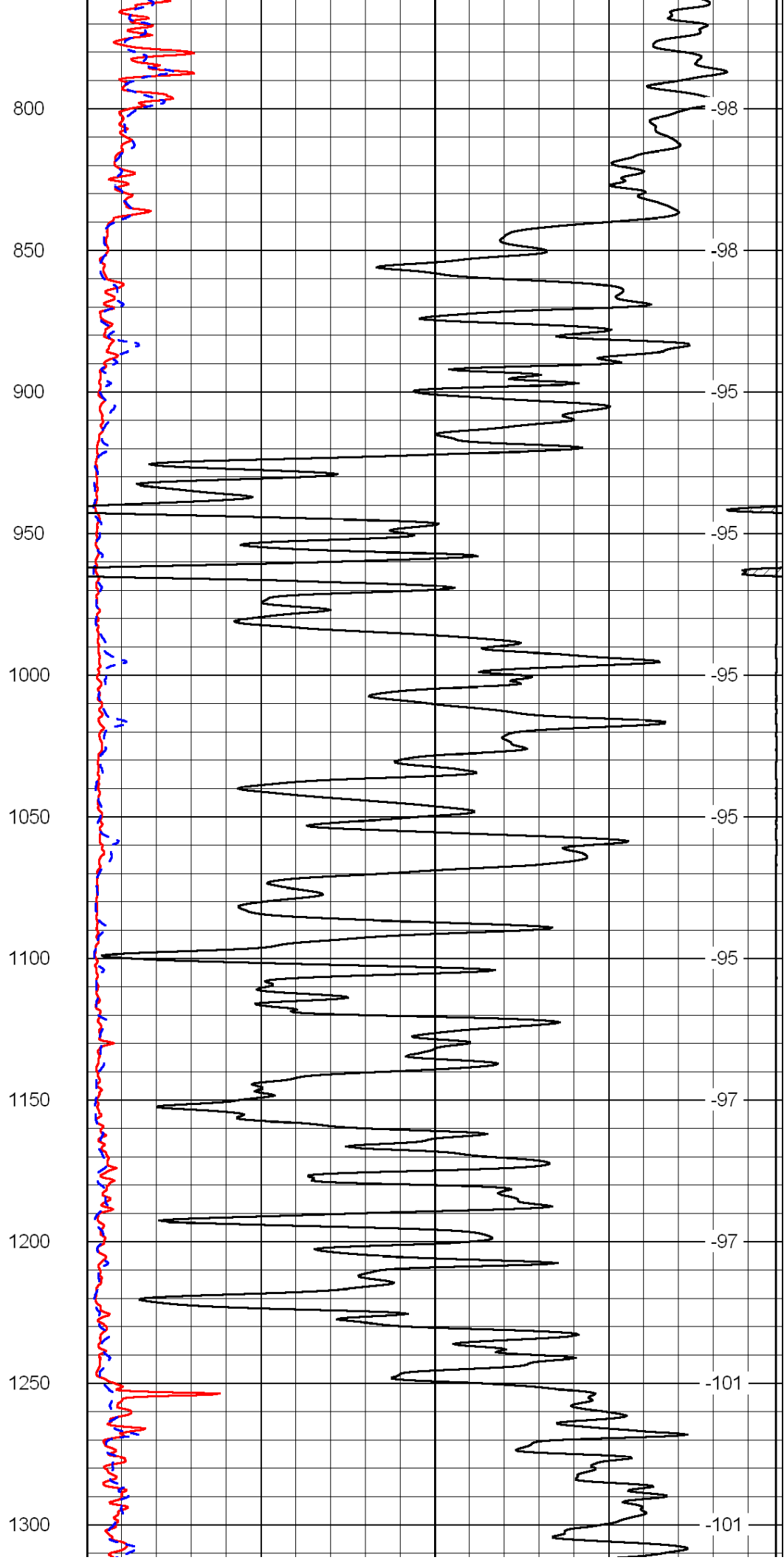
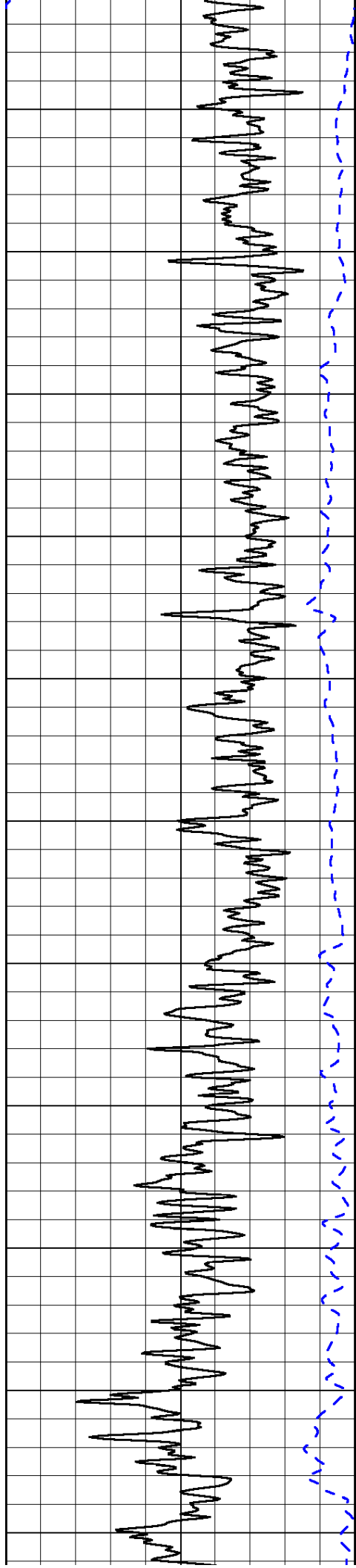
0	Shallow Resistivity	50
0	Deep Resistivity	50

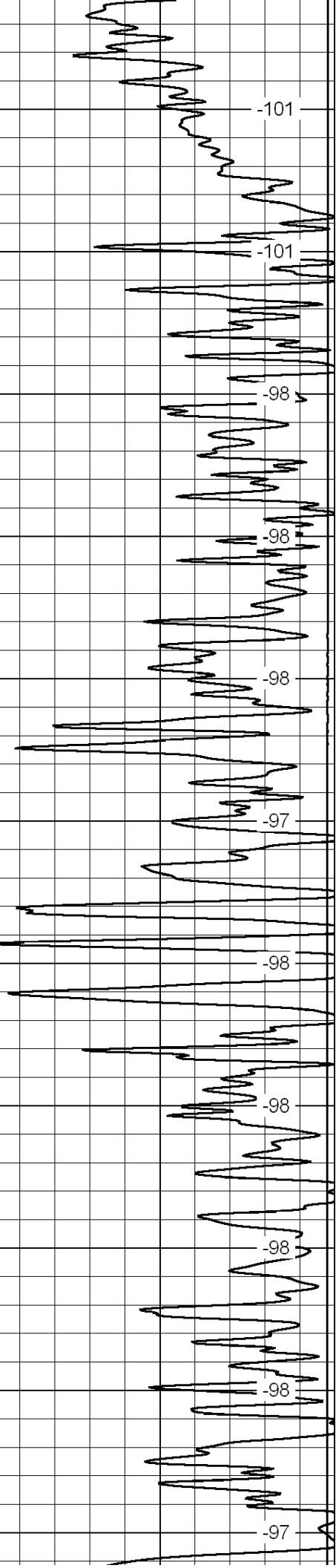
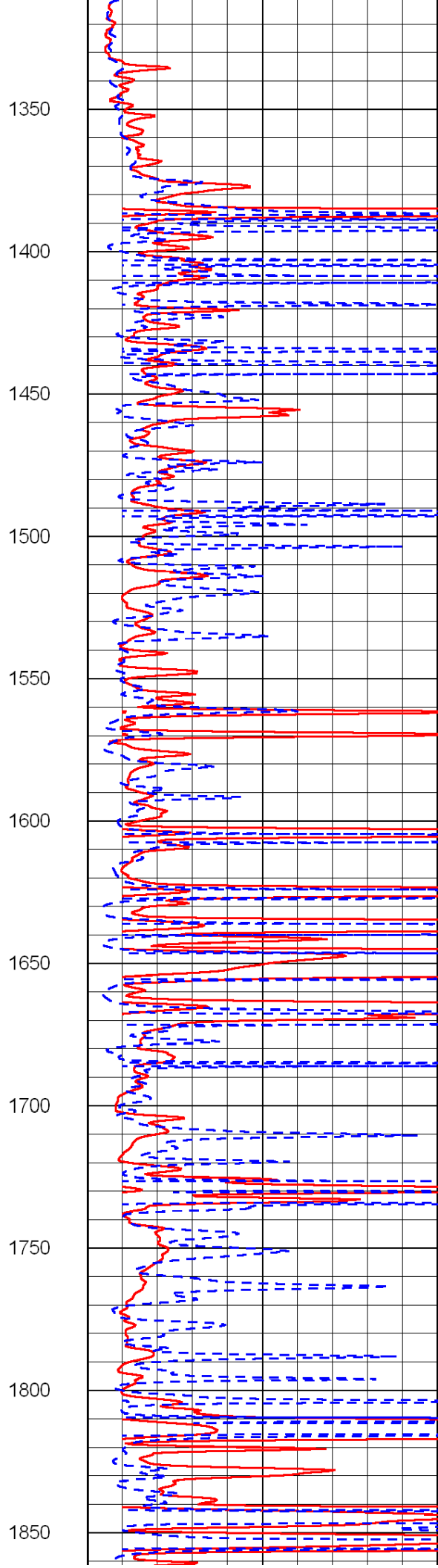
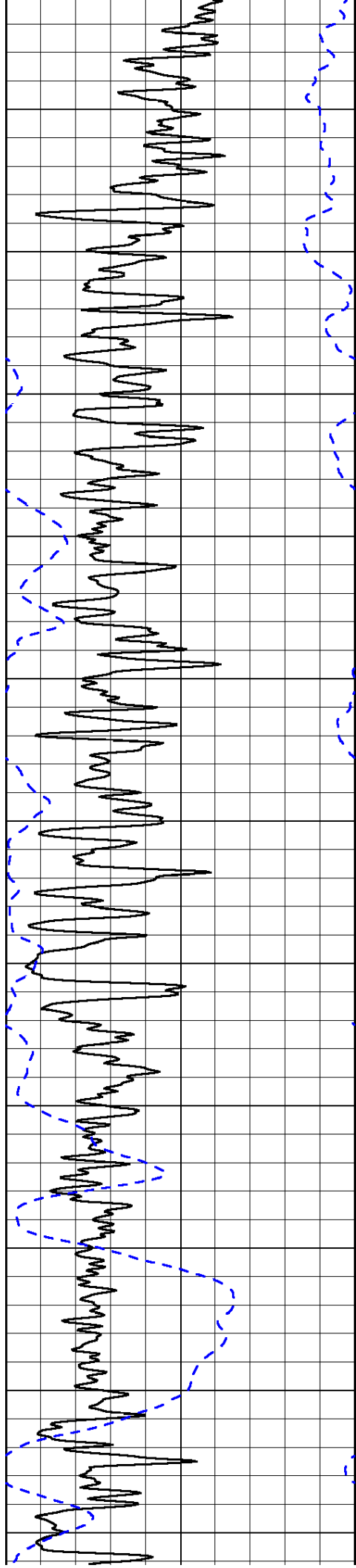
LSPD

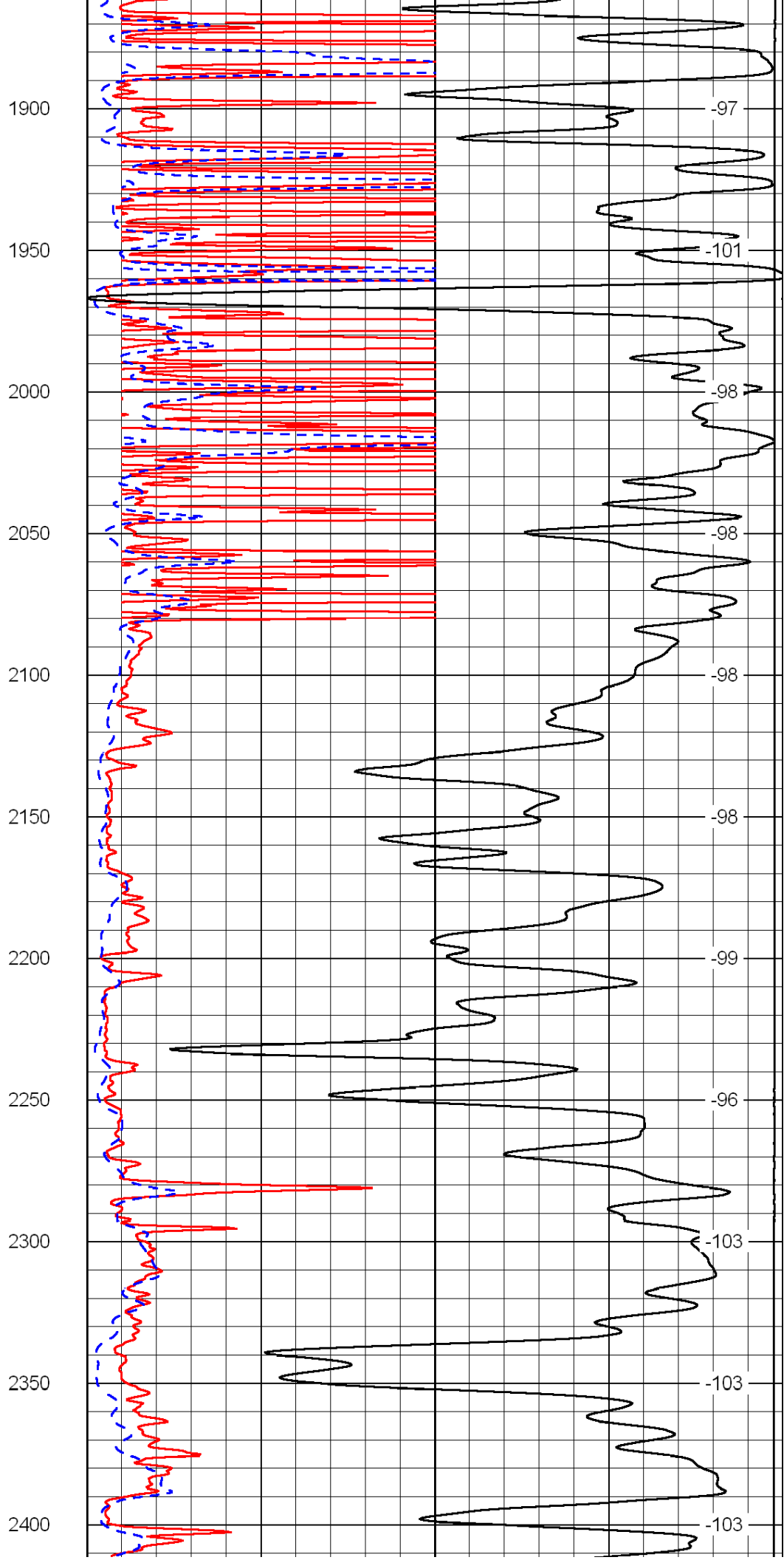
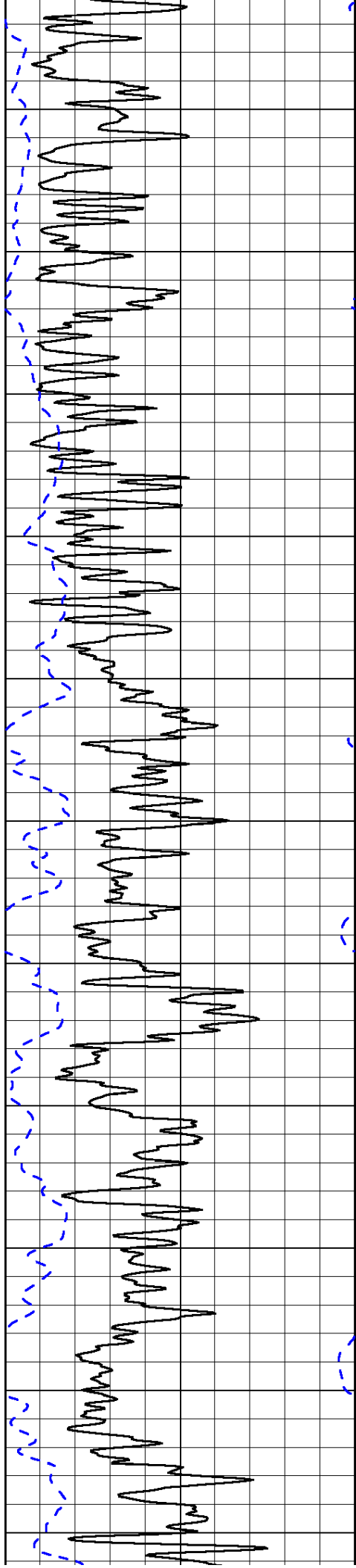
1000	Conductivity	0
15000	Line Tension	0

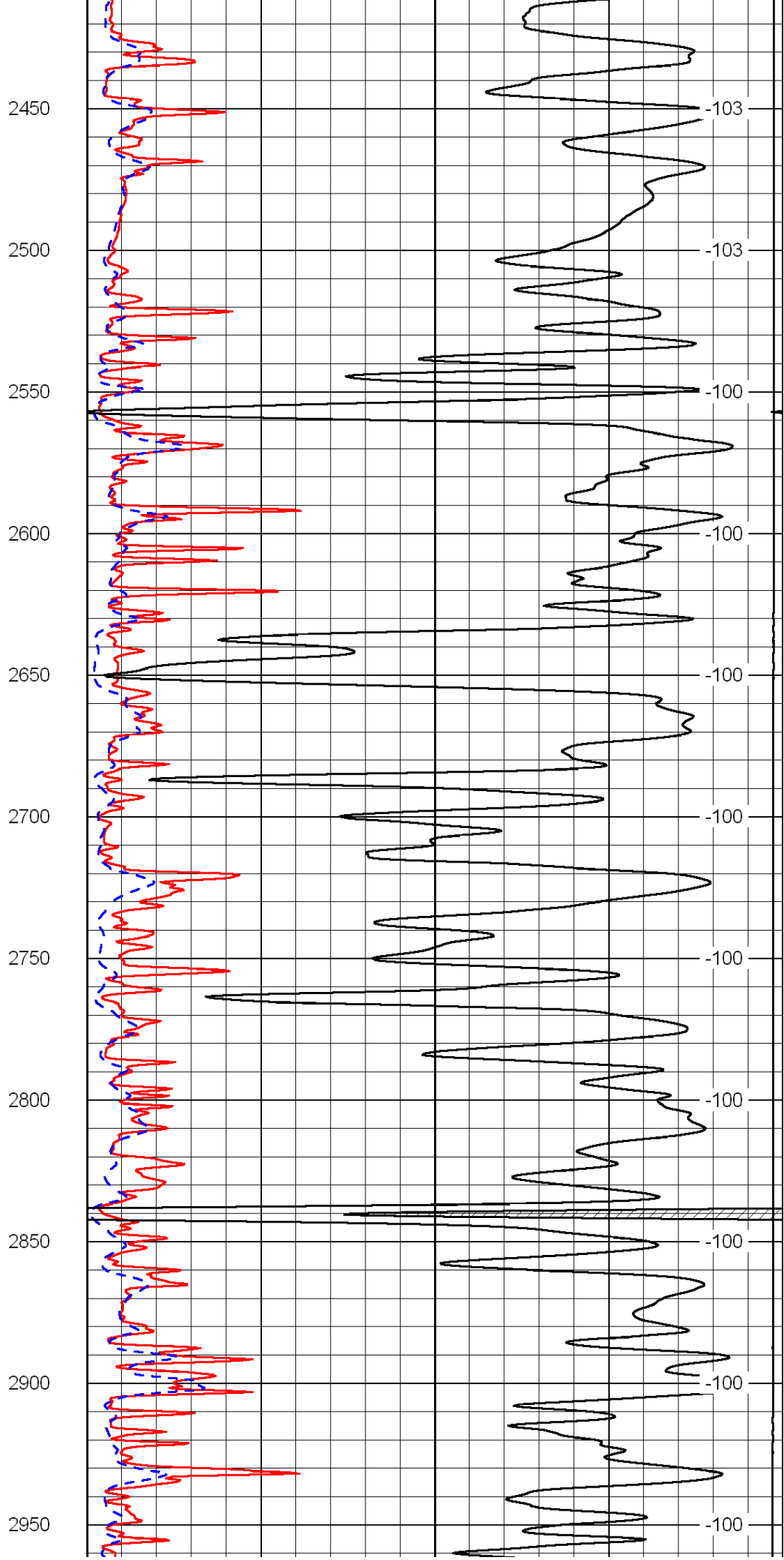
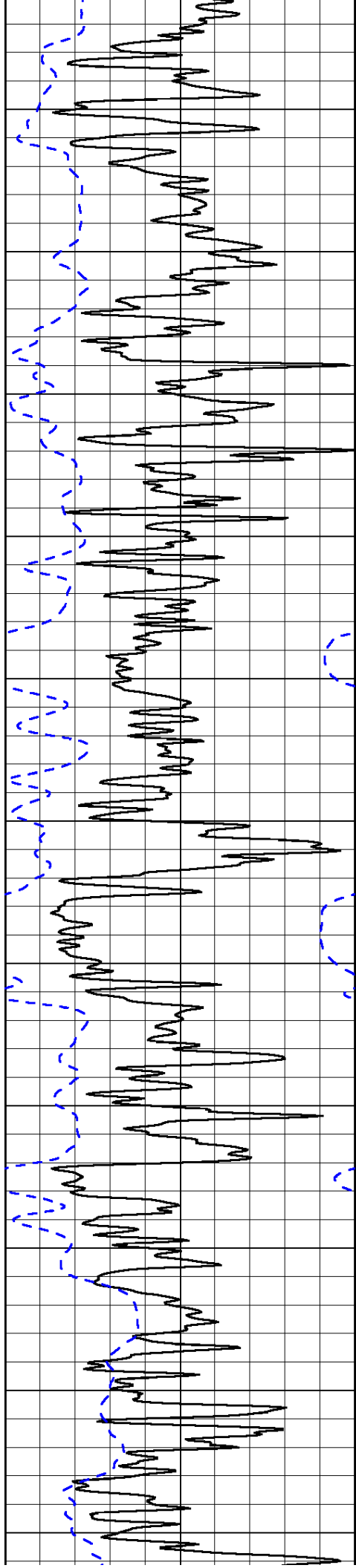
50	Shallow Resistivity	500
50	Deep Resistivity	500

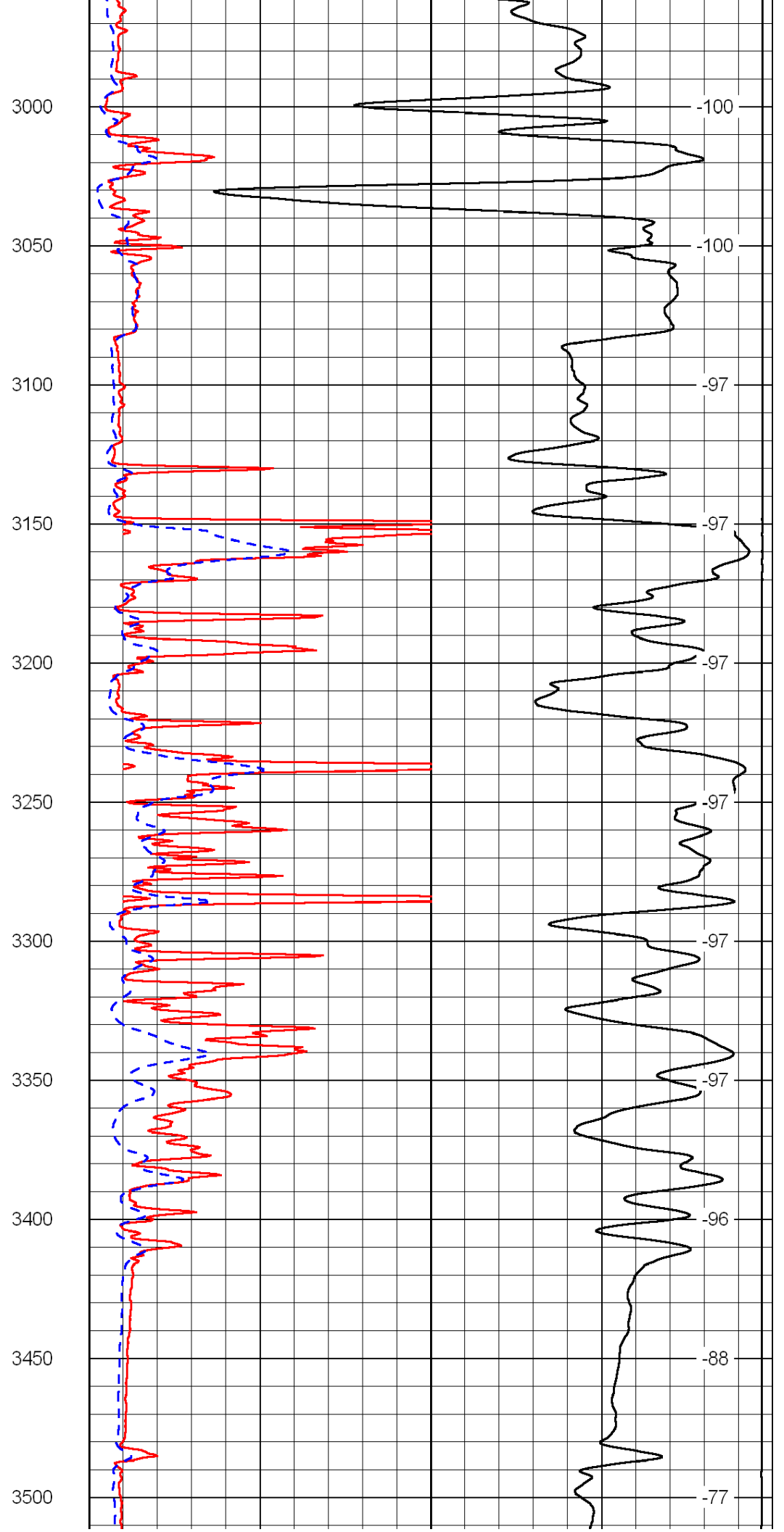
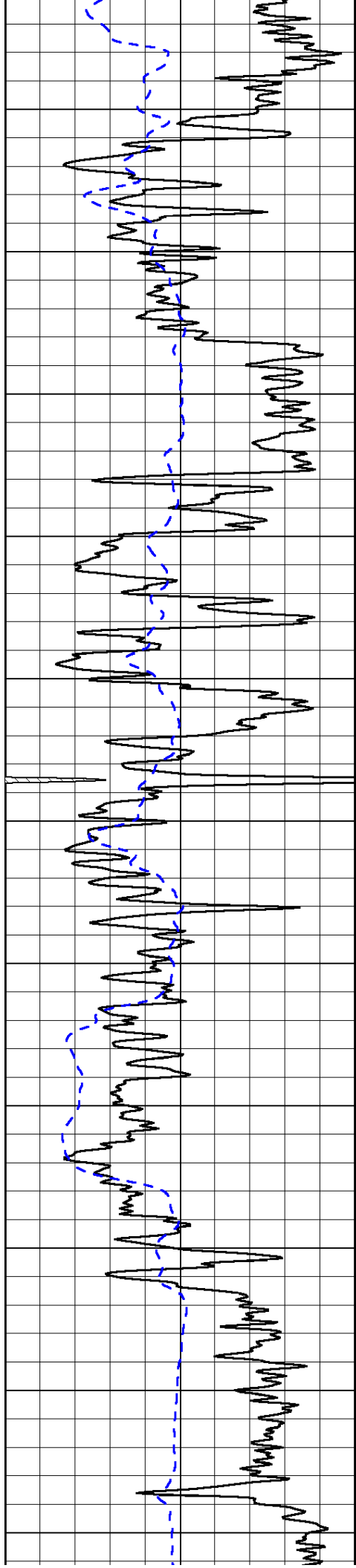


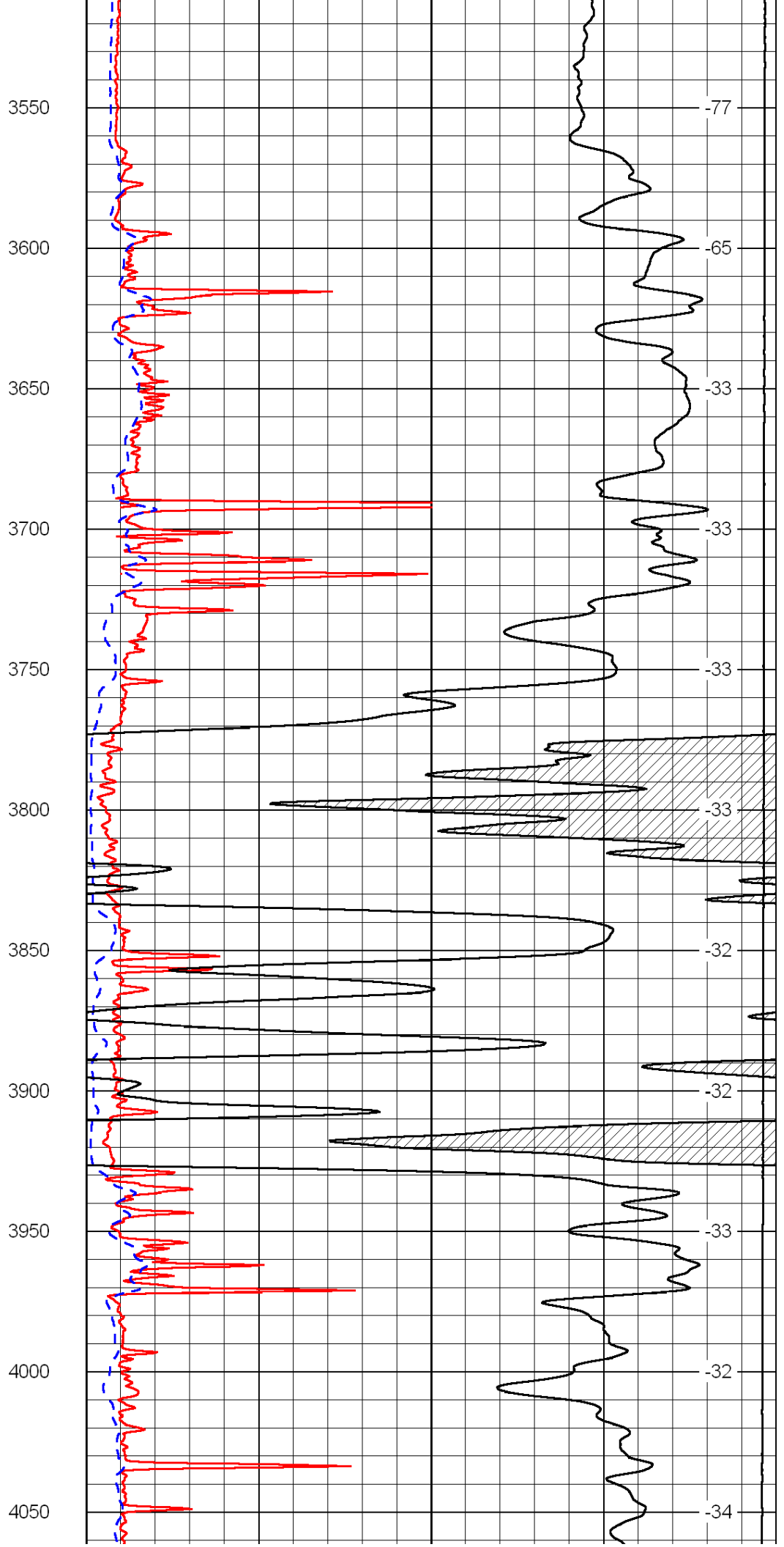
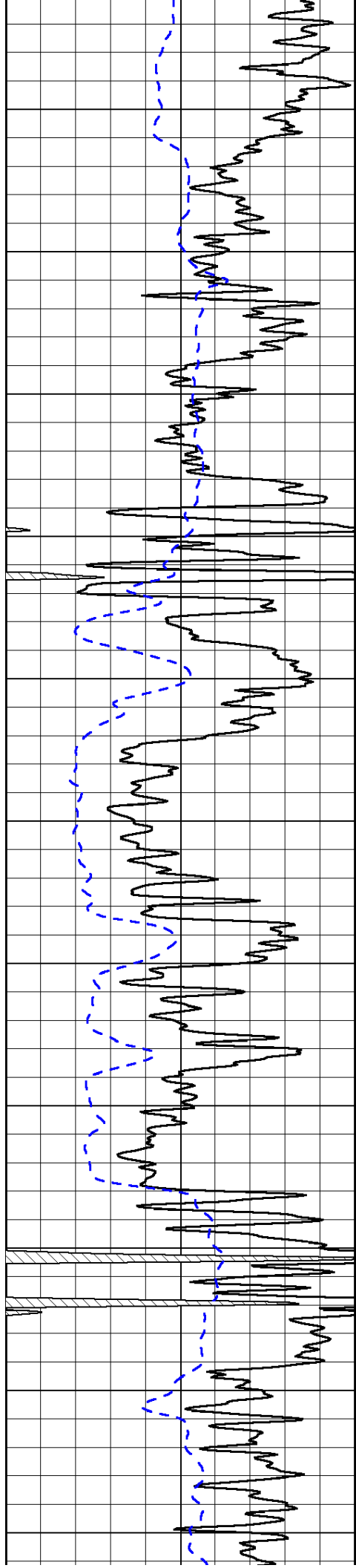


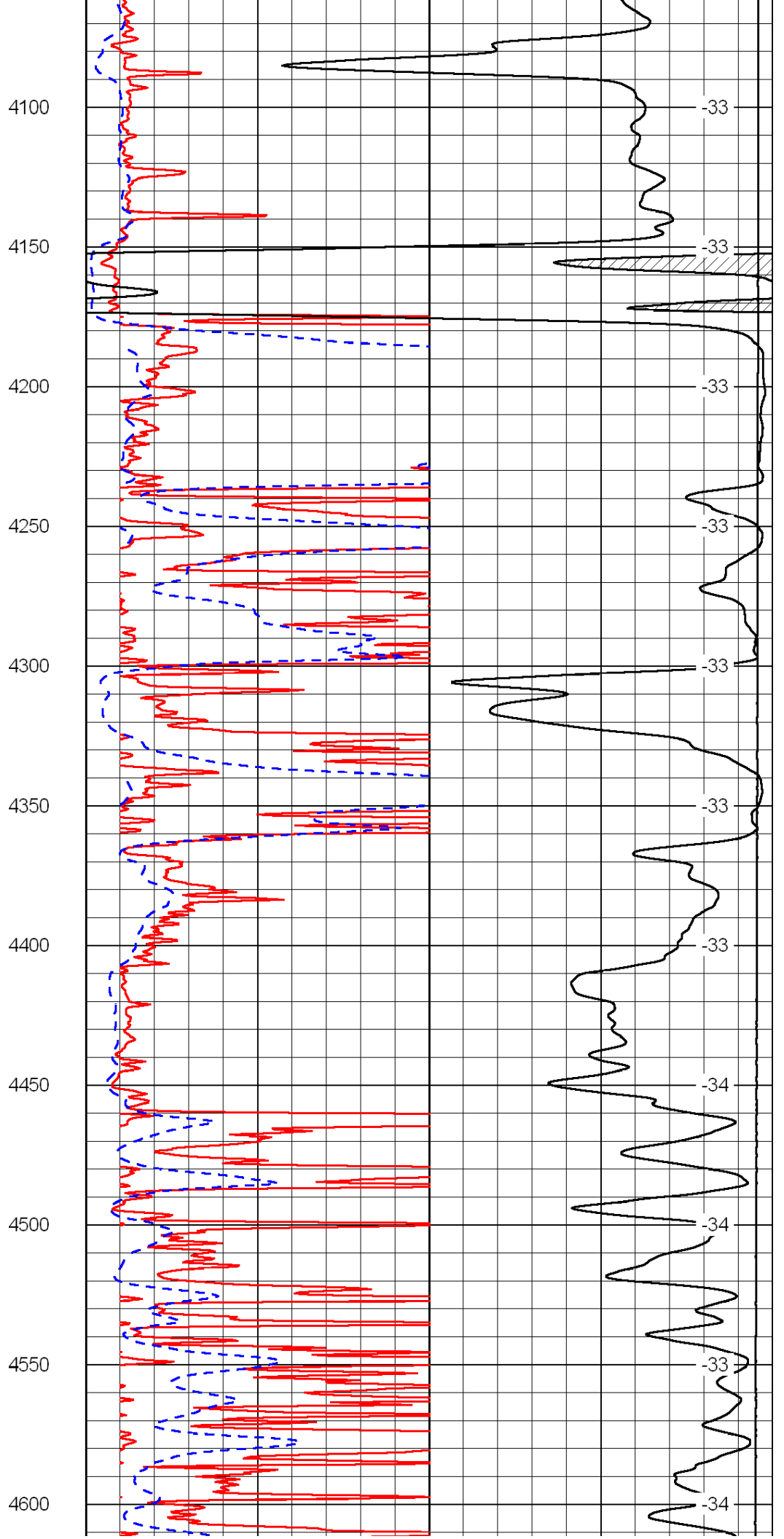
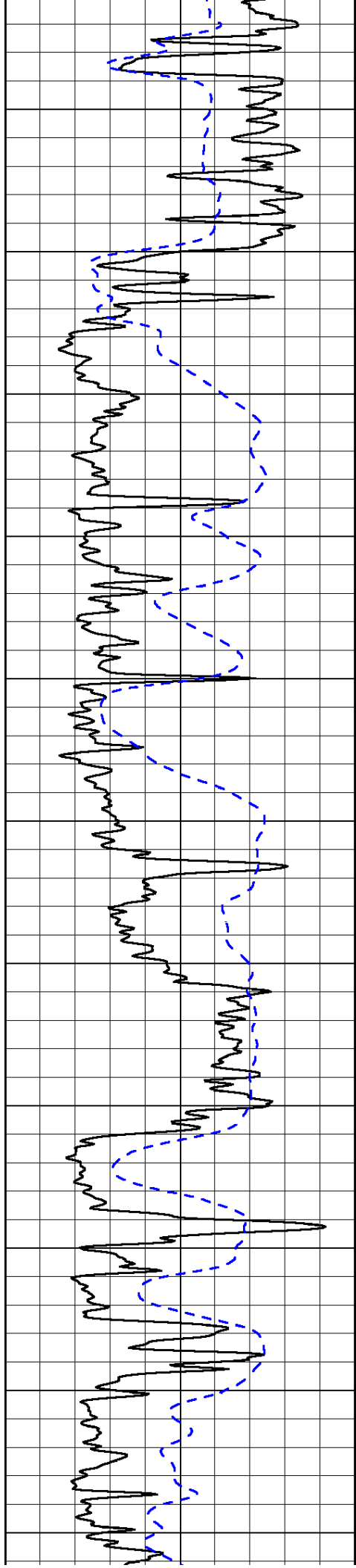


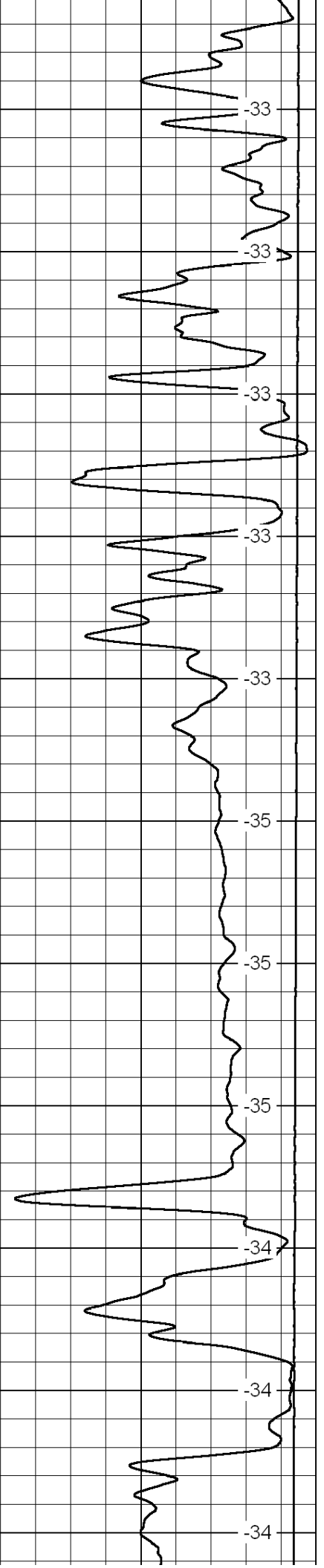
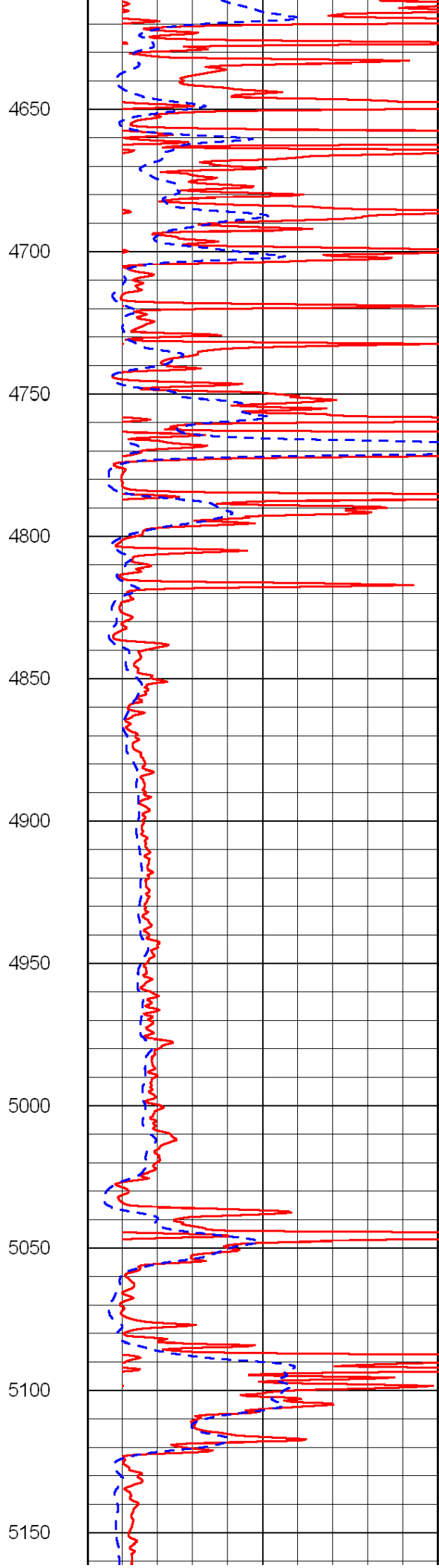
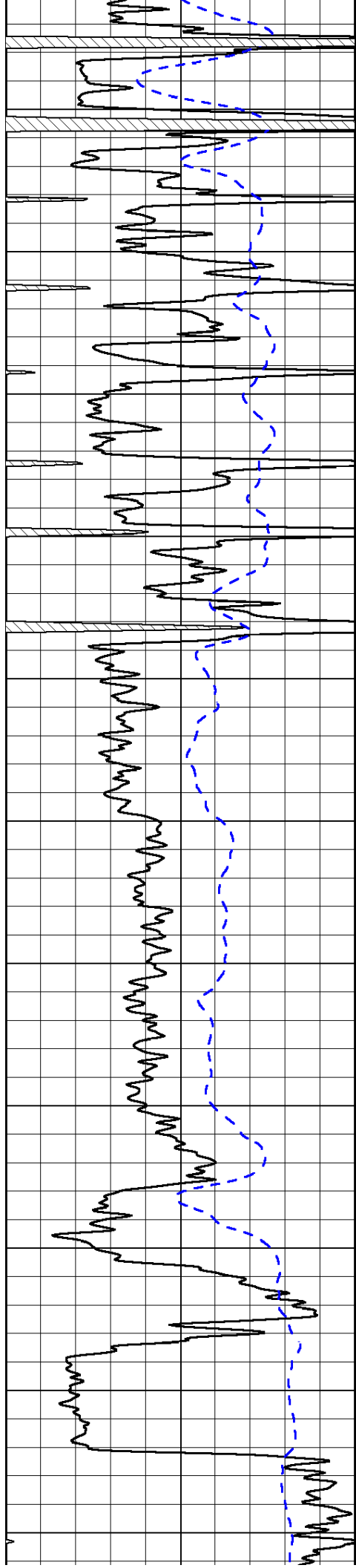


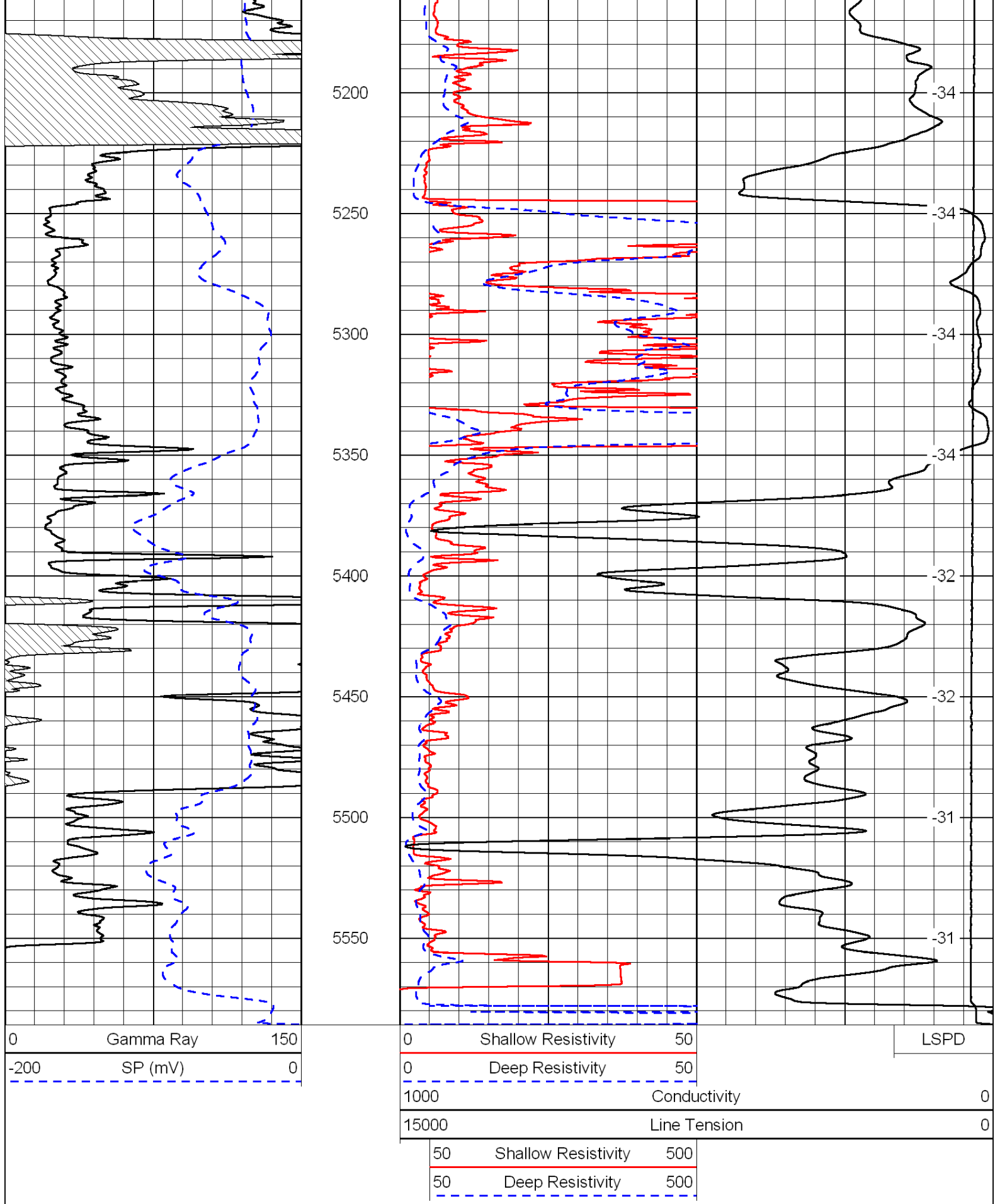










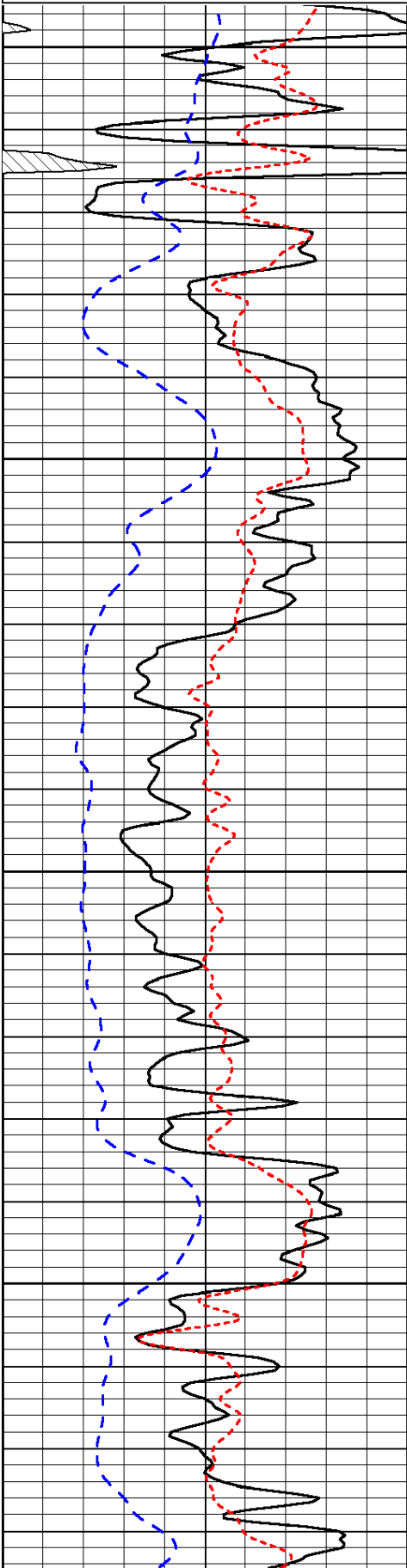


Database File: c:\warrior\data\chieftain_gillig no. 1\chieftain_gillig_1hd.db
 Dataset Pathname: dil/chiefstck
 Presentation Format: dil
 Dataset Creation: Fri Jun 17 22:18:52 2011

0	Gamma Ray	150
-200	SP (mV)	0
-160	Rxo / Rt	40

0.2	Deep Resistivity	2000
0.2	Medium Resistivity	2000
0.2	Shallow Resistivity	2000
15000	Line Tension	0

LSPD

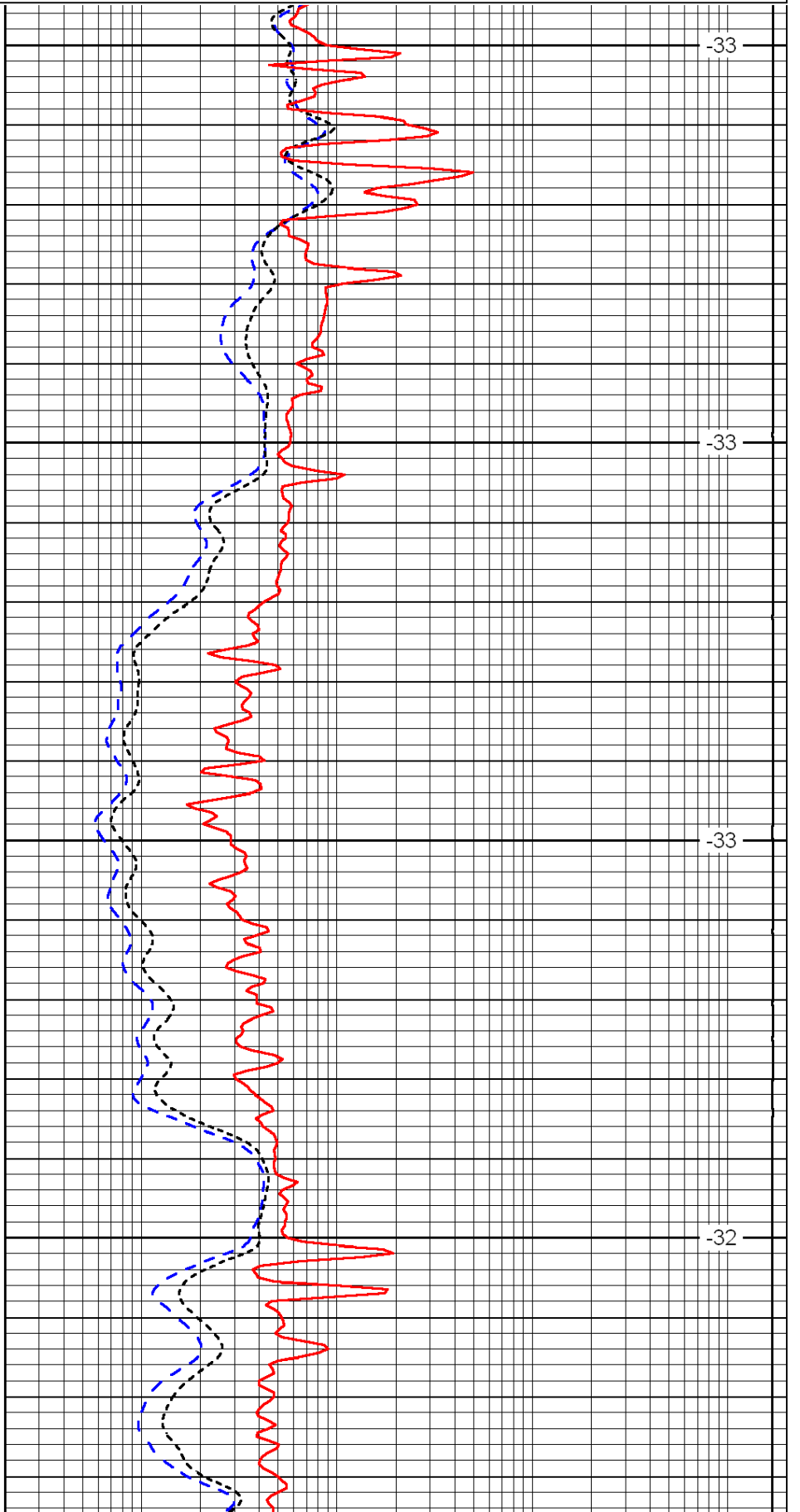


3700

3750

3800

3850

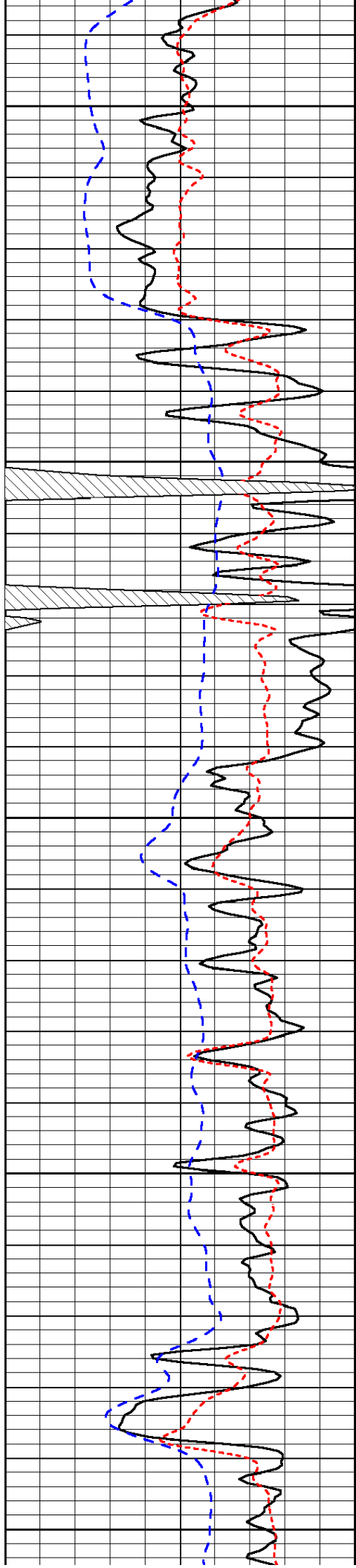


-33

-33

-33

-32



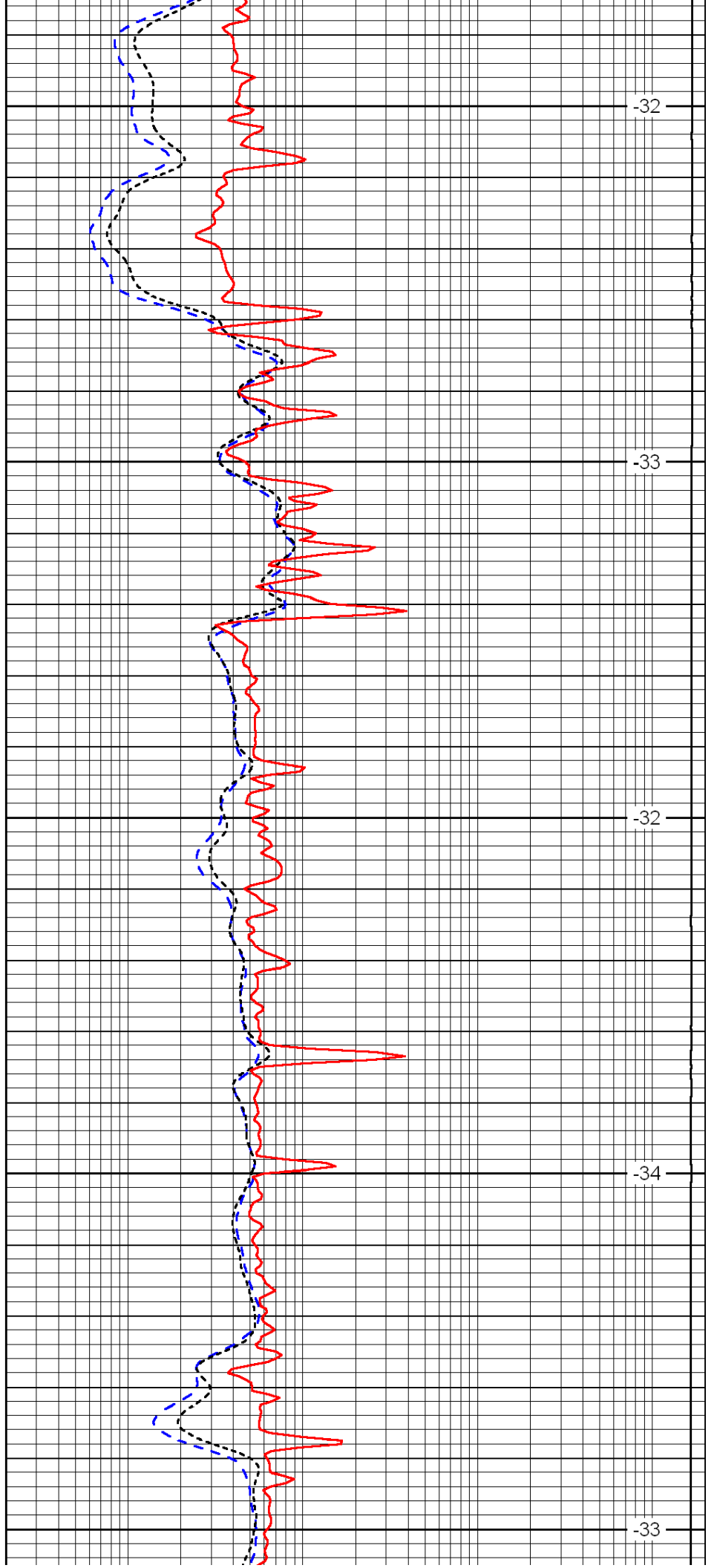
3900

3950

4000

4050

4100



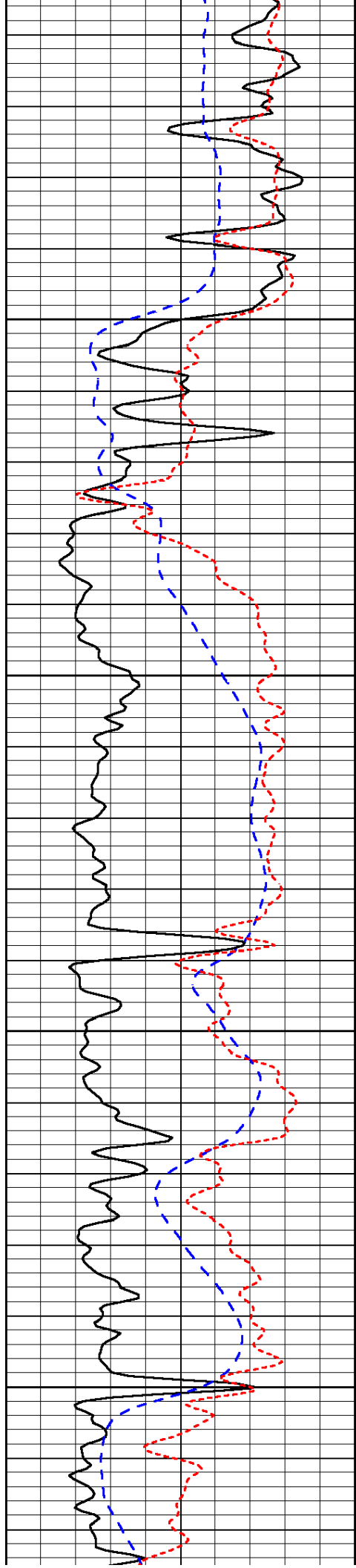
-32

-33

-32

-34

-33

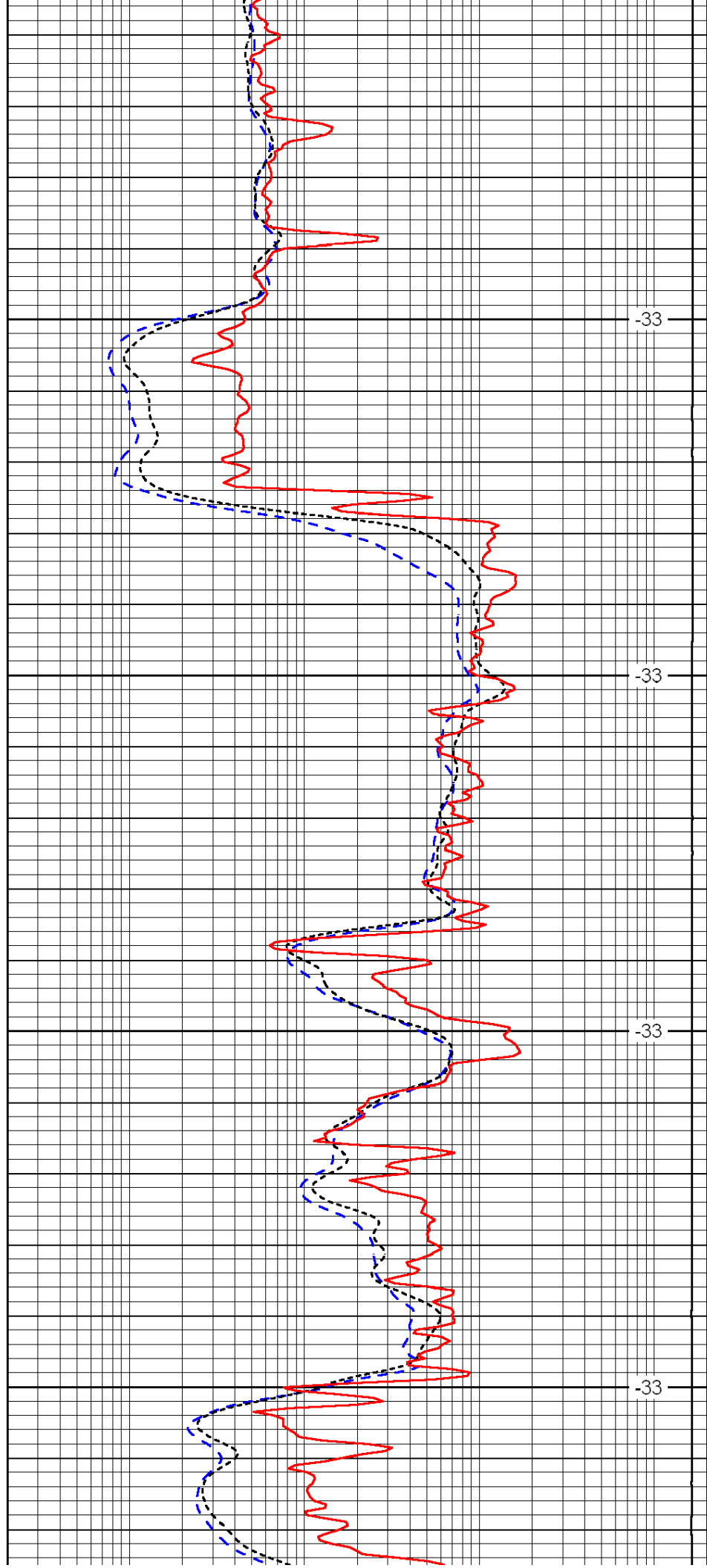


4150

4200

4250

4300

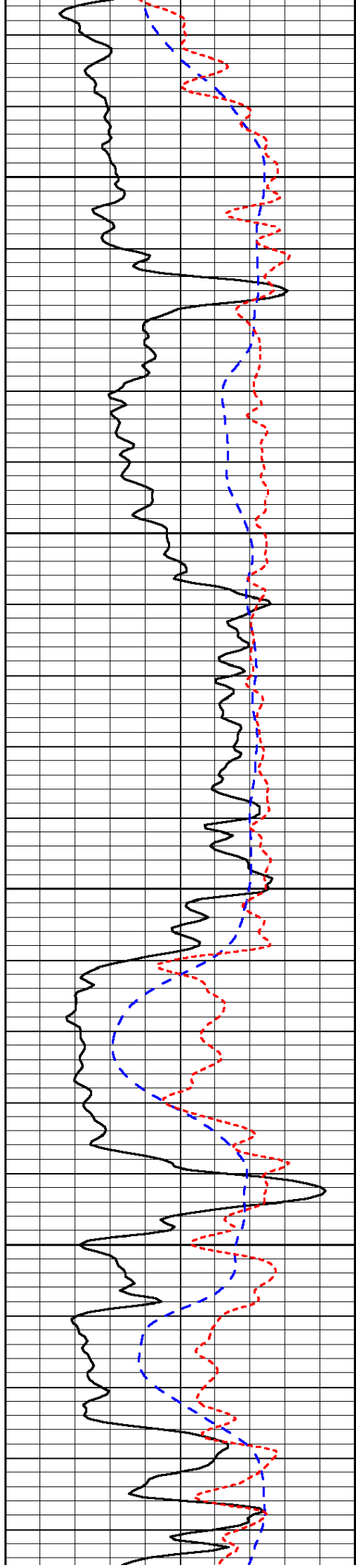


-33

-33

-33

-33

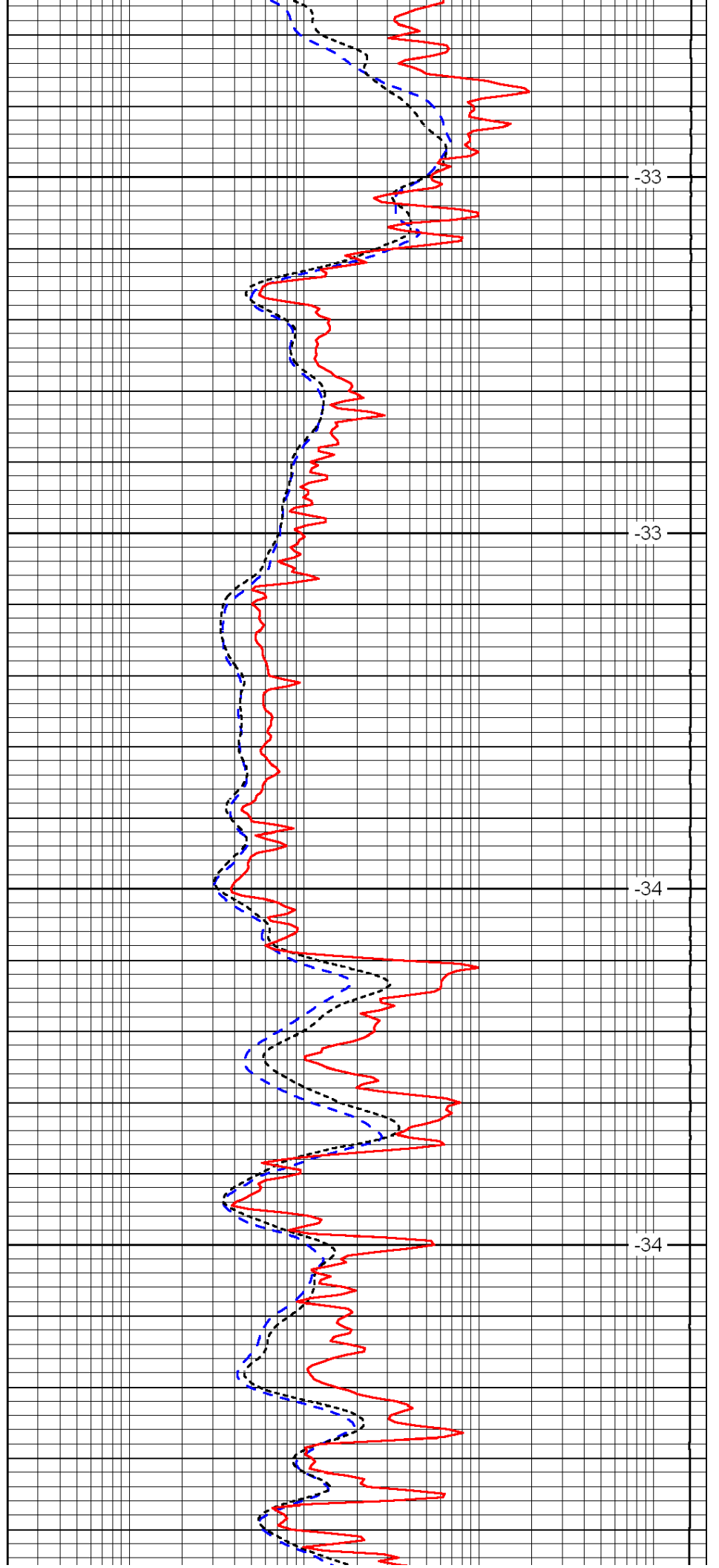


4350

4400

4450

4500

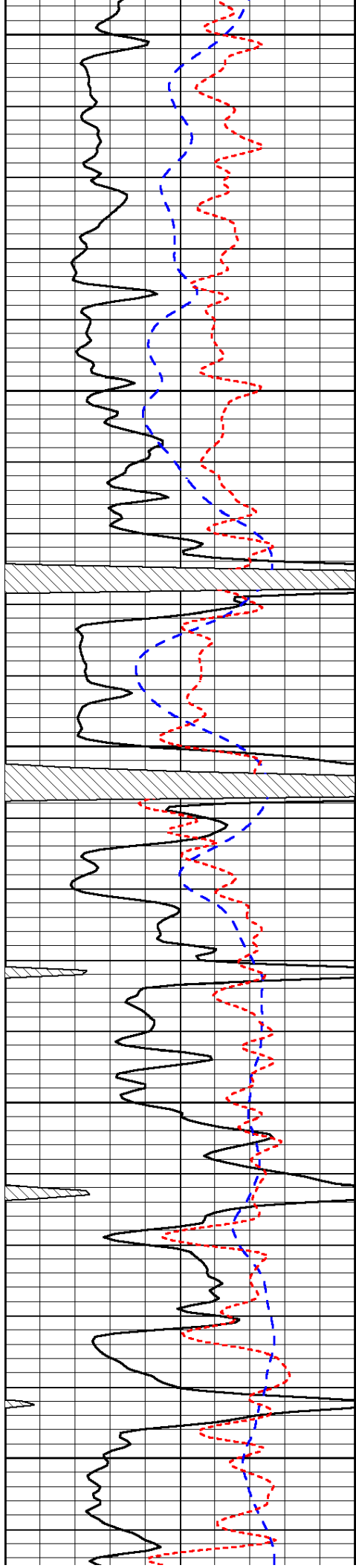


-33

-33

-34

-34



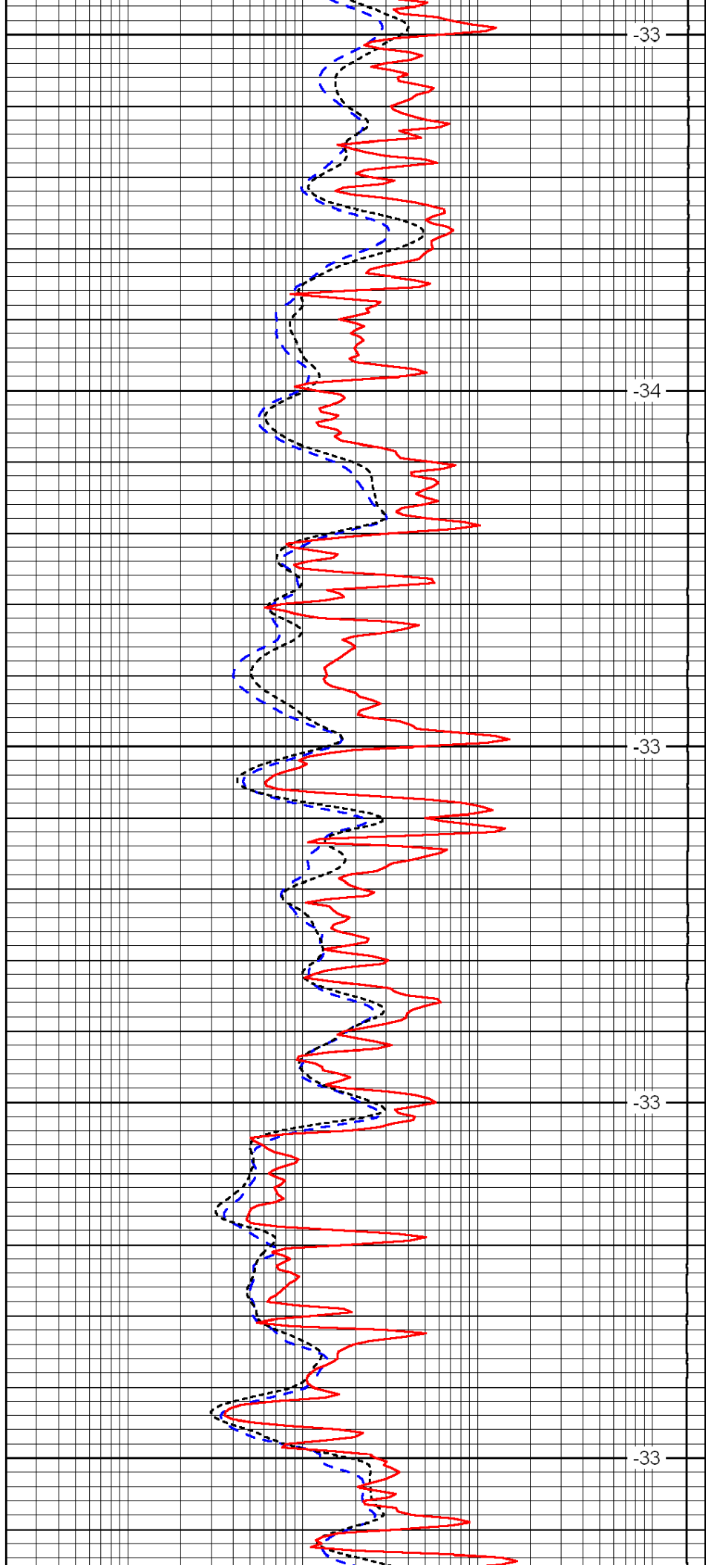
4550

4600

4650

4700

4750



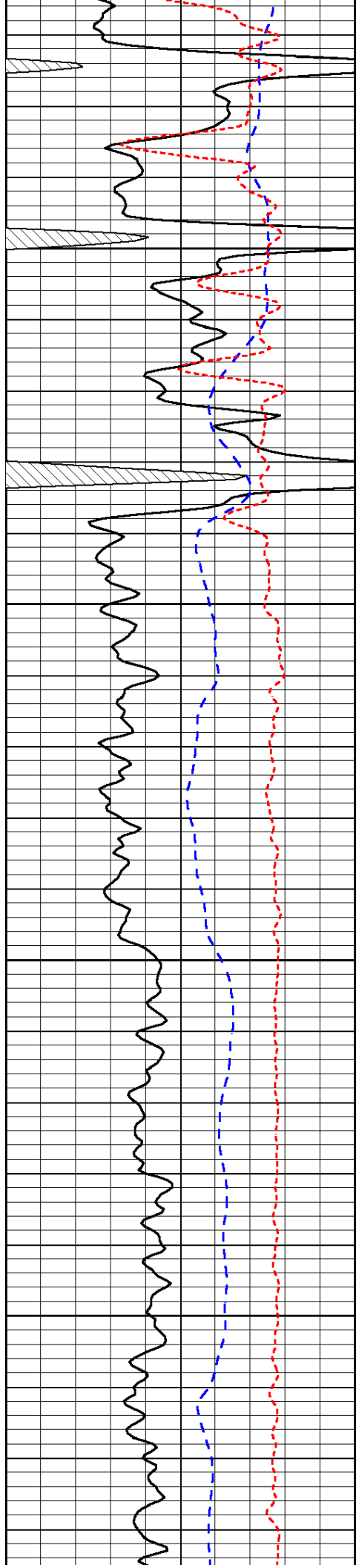
-33

-34

-33

-33

-33

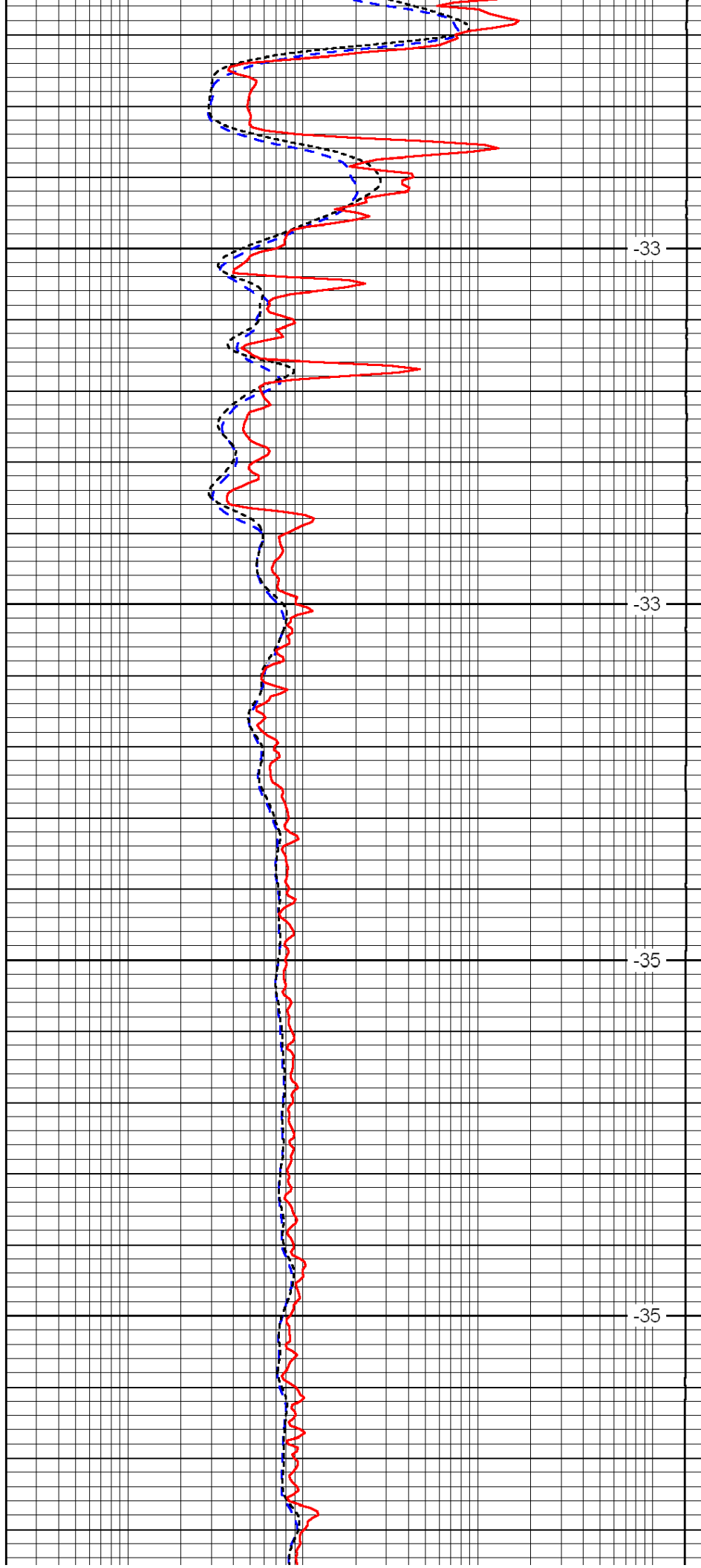


4800

4850

4900

4950

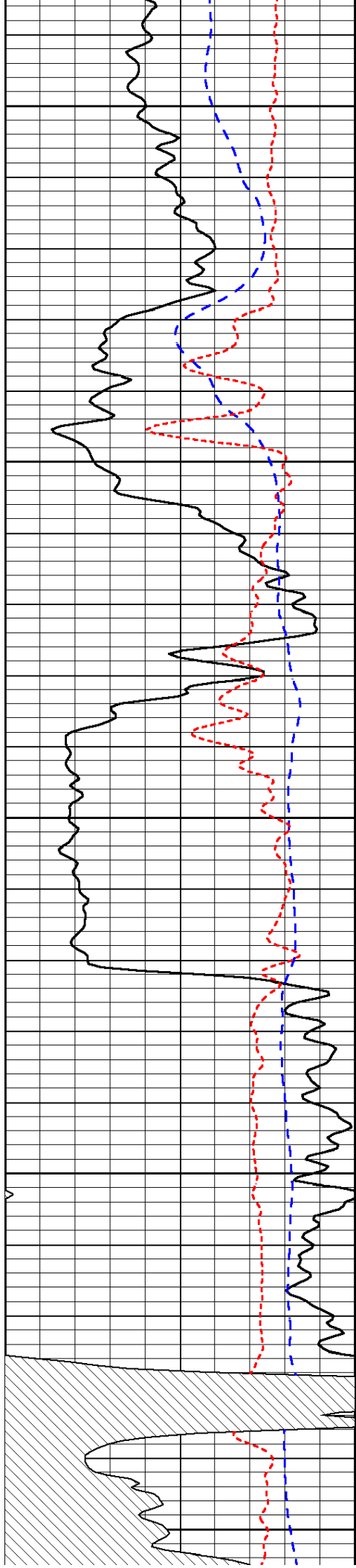


-33

-33

-35

-35



5000

5050

5100

5150

5200

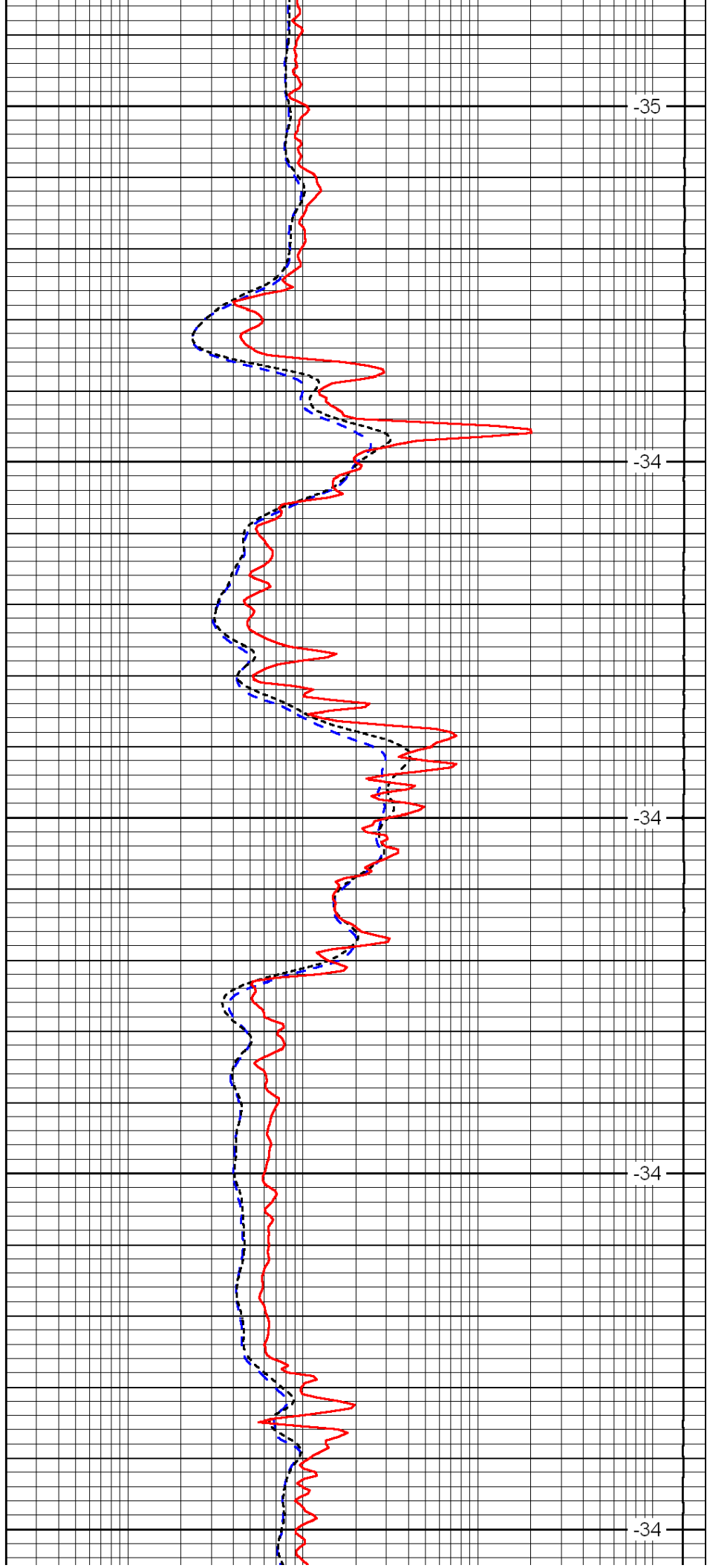
-35

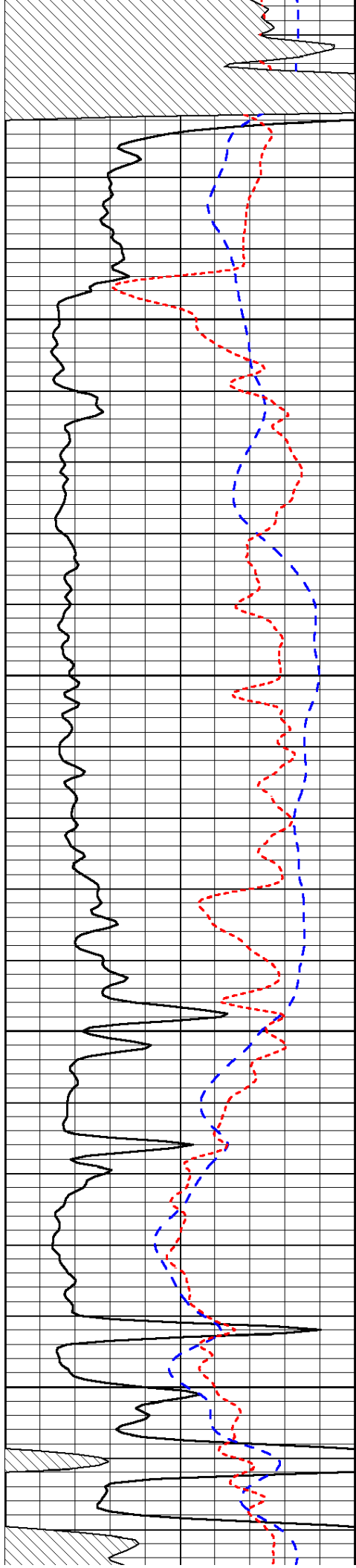
-34

-34

-34

-34



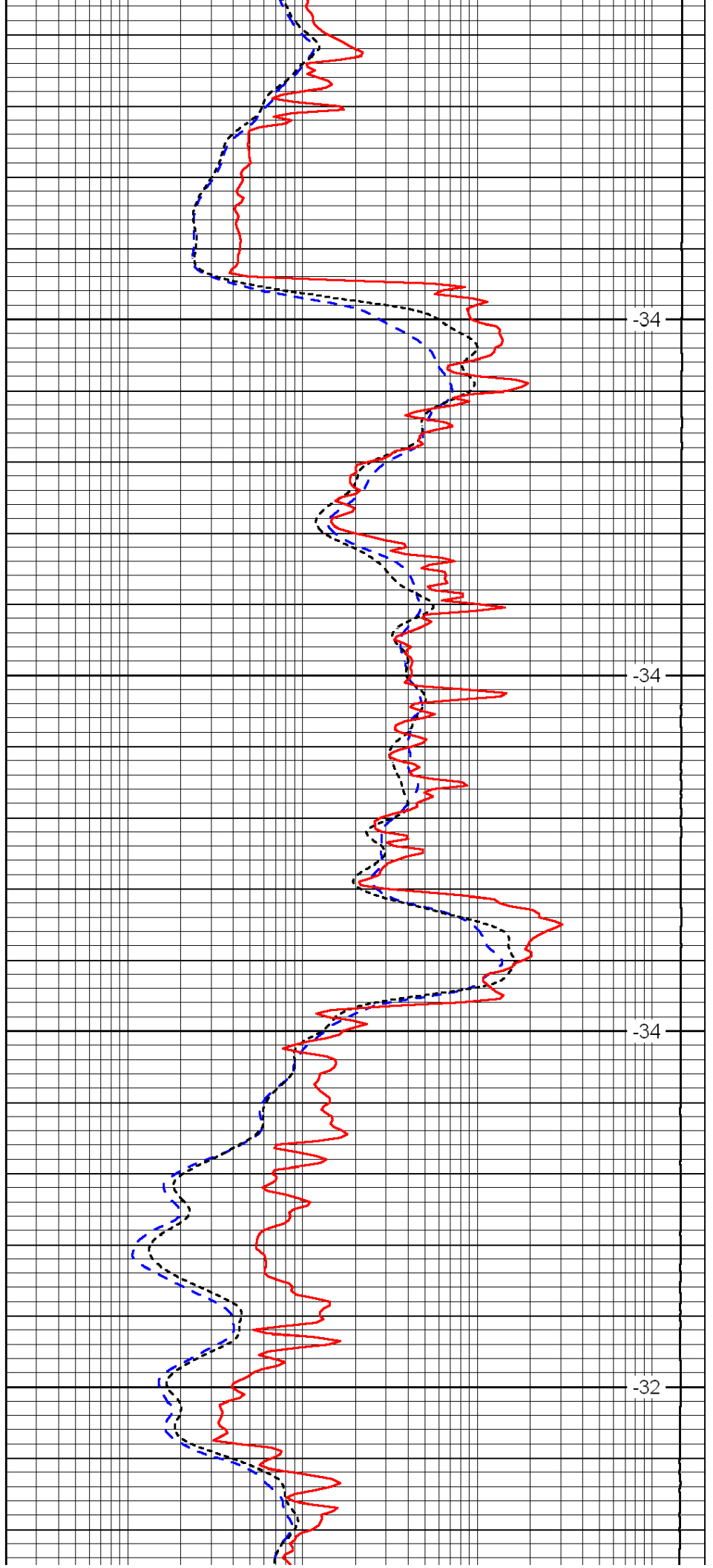


5250

5300

5350

5400

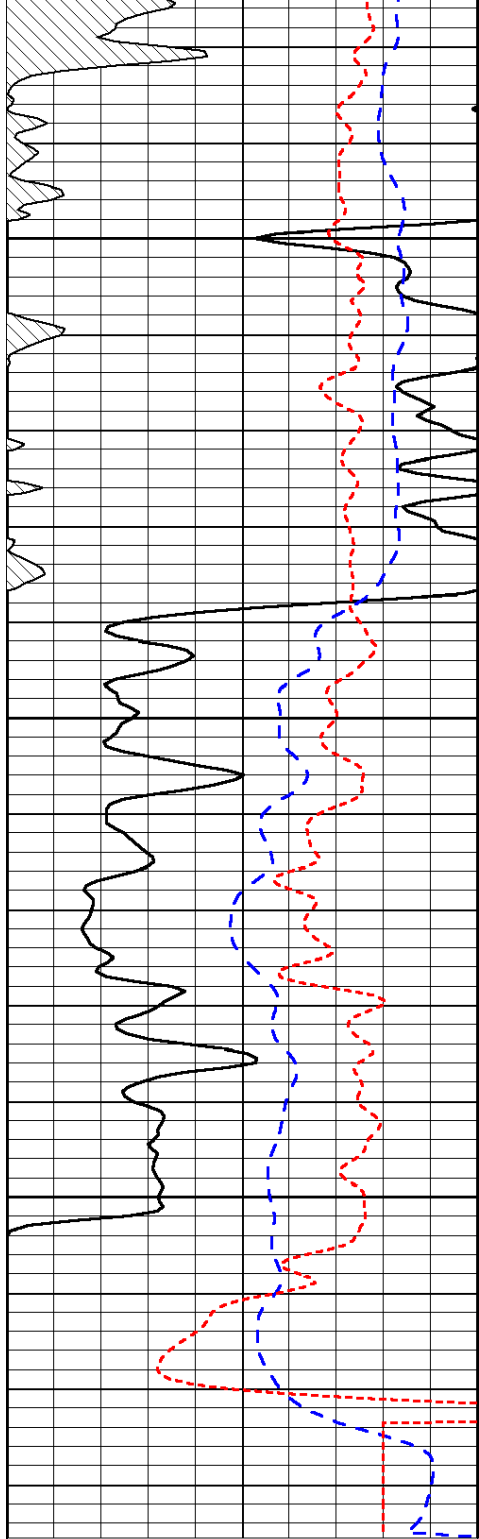


-34

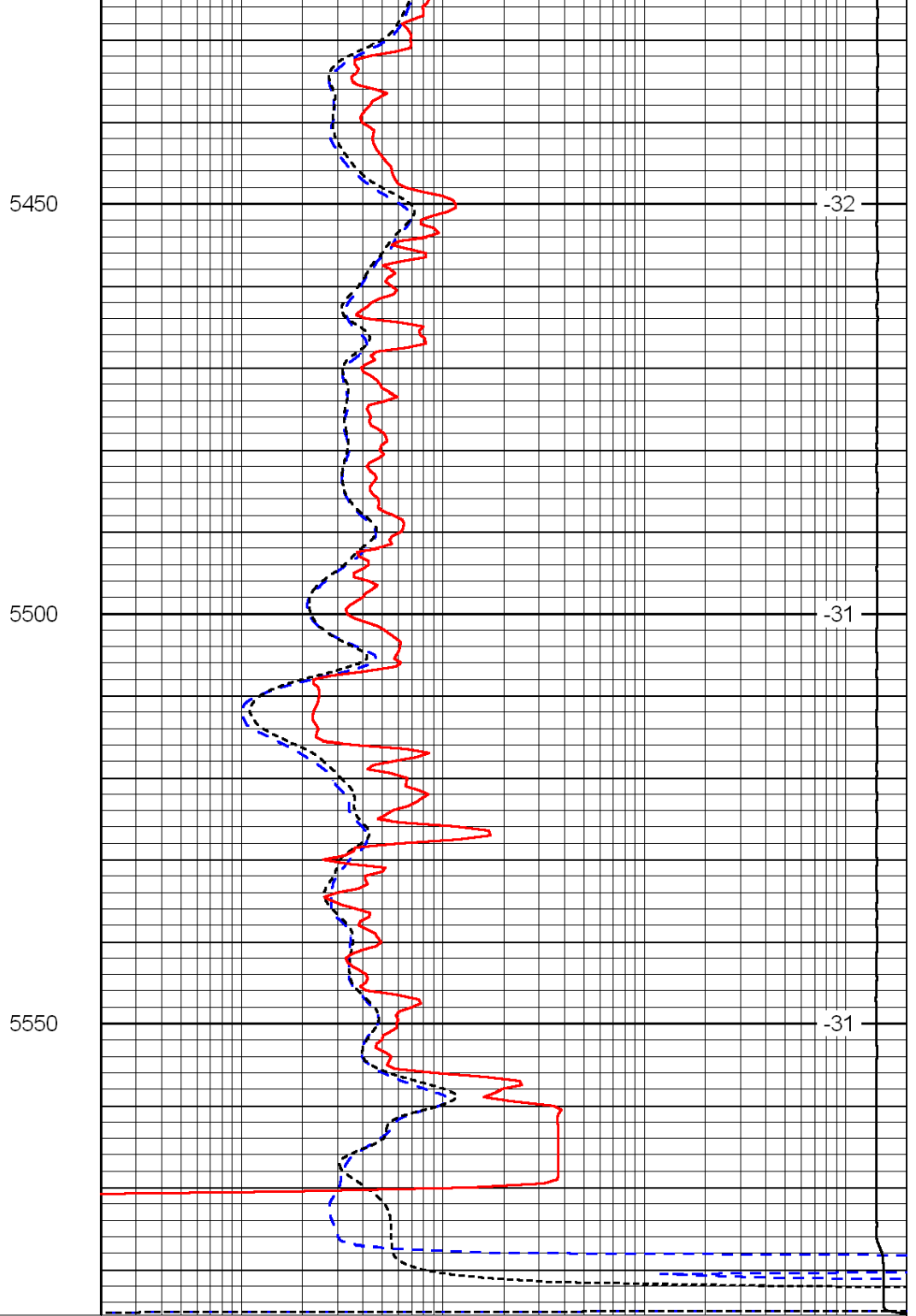
-34

-34

-32



0	Gamma Ray	150
-200	SP (mV)	0
-160	Rxo / Rt	40



0.2	Deep Resistivity	2000
0.2	Medium Resistivity	2000
0.2	Shallow Resistivity	2000
15000	Line Tension	0

LSPD