



**Borehole Compensated
Sonic Log**

DIGITAL LOG (785) 625-3858

API No. 15-195-22,630-00-00	Company Murfin Drilling Company, Inc.	Location 2630' FNL & 330' FWL	Other Services CNL/CDL MEL/DIL
Well Kohl Unit 'A' # 1-8	County Trego		
Field Wildcat	State Kansas		
Sec: 8	Twp: 12 S	Rge: 21 W	Elevation K.B. 2309 D.F. 2304 G.L. 2304
Permanent Datum Log Measured From Drilling Measured From	Ground Level Kelly Bushing Kelly Bushing	Elevation 2304 5 Ft. Above Perm. Datum	

Date	10/09/2009
Run Number	Two
Type Log	BHC Sonic
Depth Driller	4083
Depth Logger	4082
Bottom Logged Interval	4071
Top Logged Interval	200
Type Fluid In Hole	Chemical
Salinity, PPM CL	5,000
Density	9.2
Level	Full
Max. Rec. Temp. F	119
Operating Rig Time	5 Hours
Equipment -- Location	4 Hays
Recorded By	K. Bange
Witnessed By	Paul Gunzelman
Recorded By	J. Schuler

Run No	Bit	Borehole Record		Casing Record	
		From	To	From	To
1	12.25	00	211	8.625	24#
2	7.875	211	4083		

<<< Fold Here >>>

All interpretations are opinions based on inferences from electrical or other measurements and we cannot and do not guarantee the accuracy or correctness of any interpretation, and we shall not, except in the case of gross or willful negligence on our part, be liable or responsible for any loss, costs, damages, or expenses incurred or sustained by anyone resulting from any interpretation made by any of our officers, agents or employees. These interpretations are also subject to our general terms and conditions set out in our current Price Schedule.

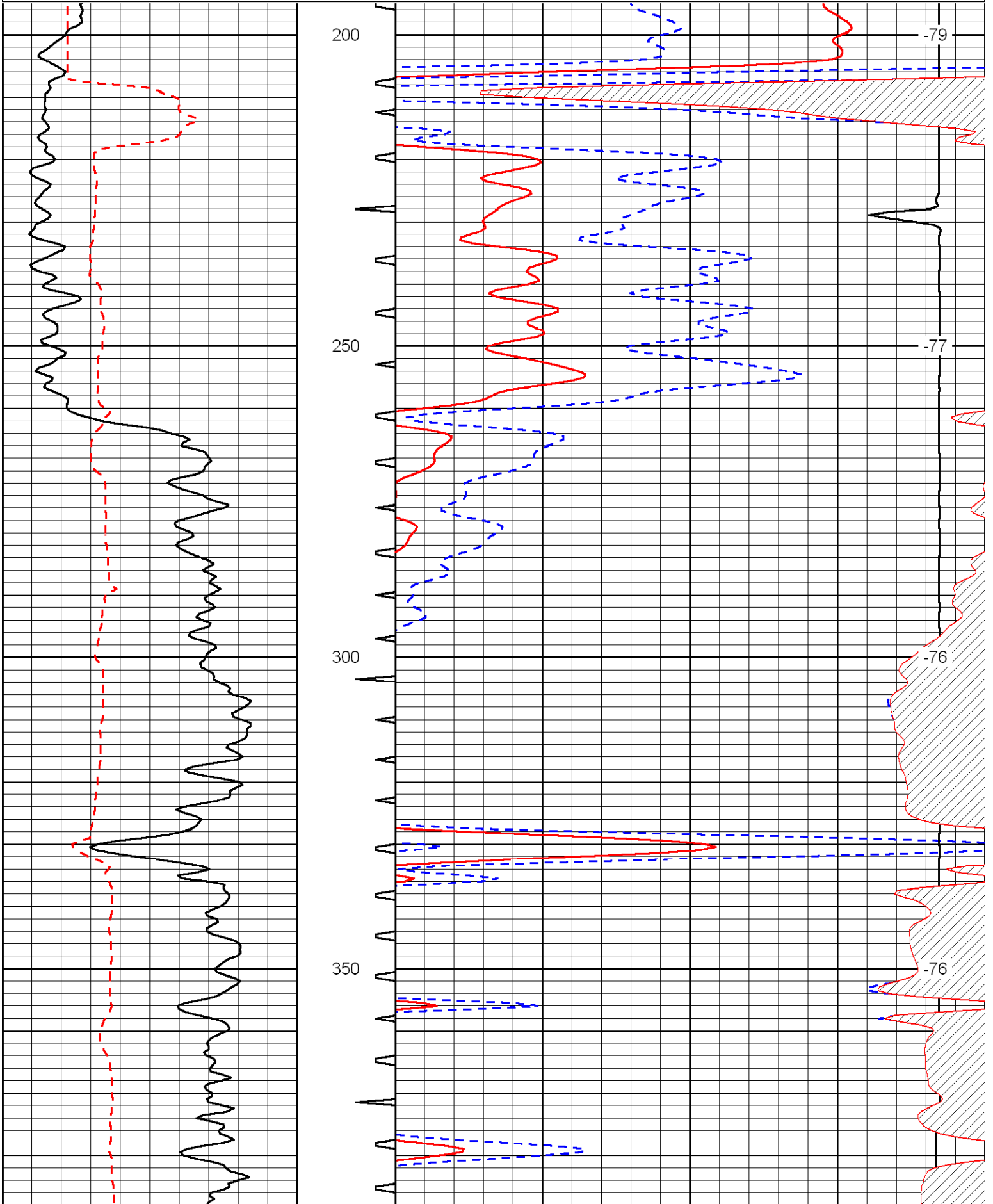
Comments

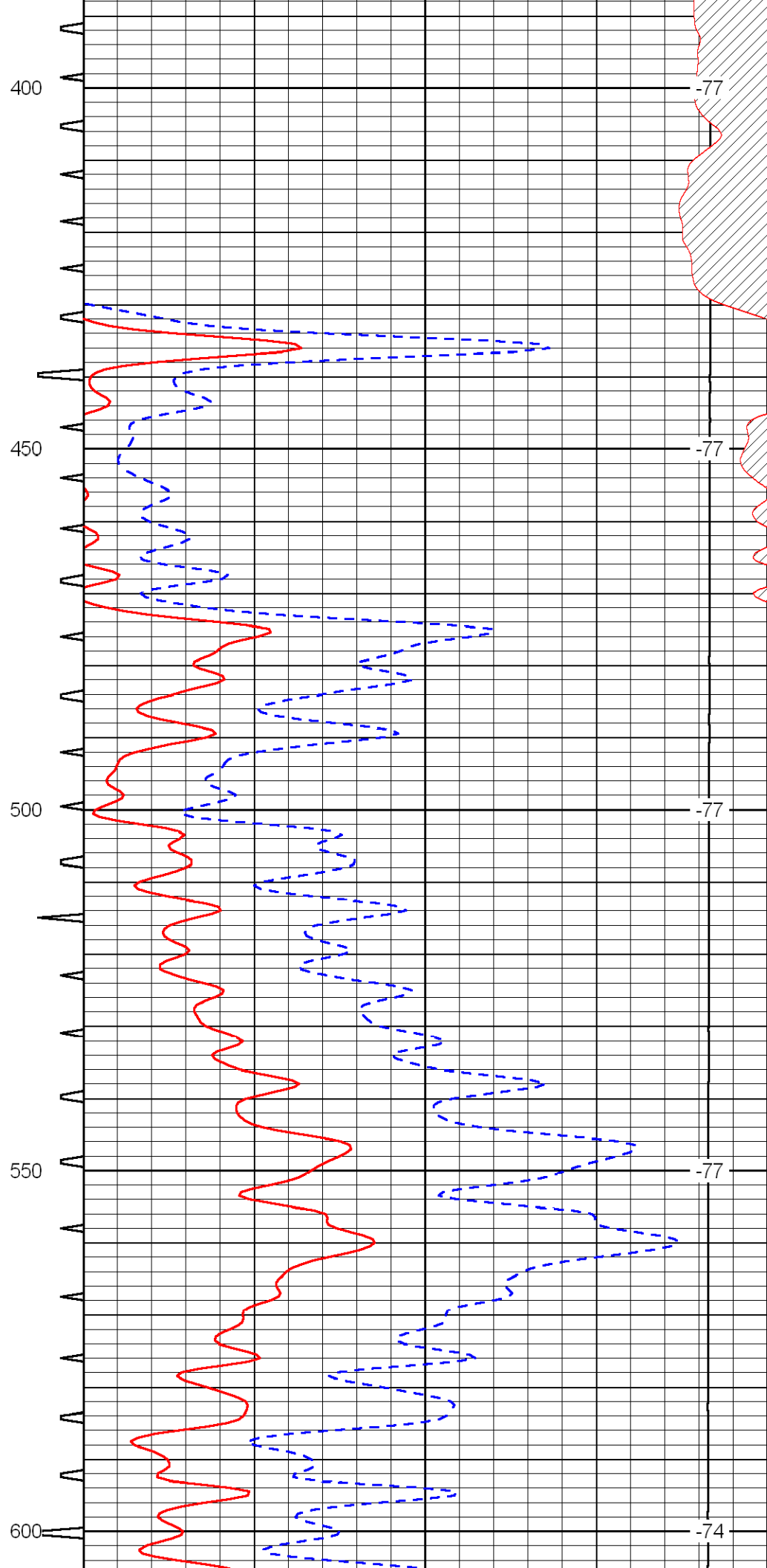
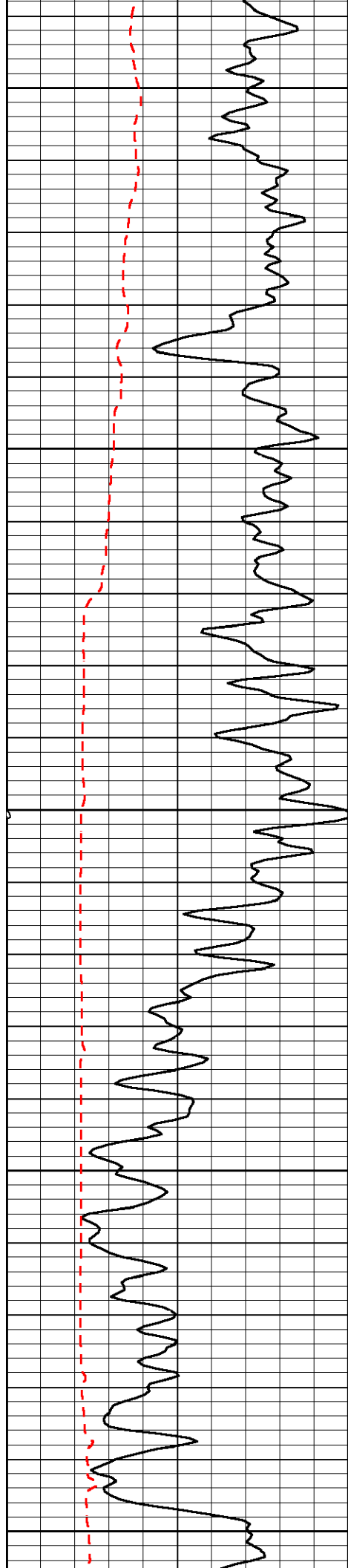
Thank you for using Log-Tech, Inc.
 (785) 625-3858

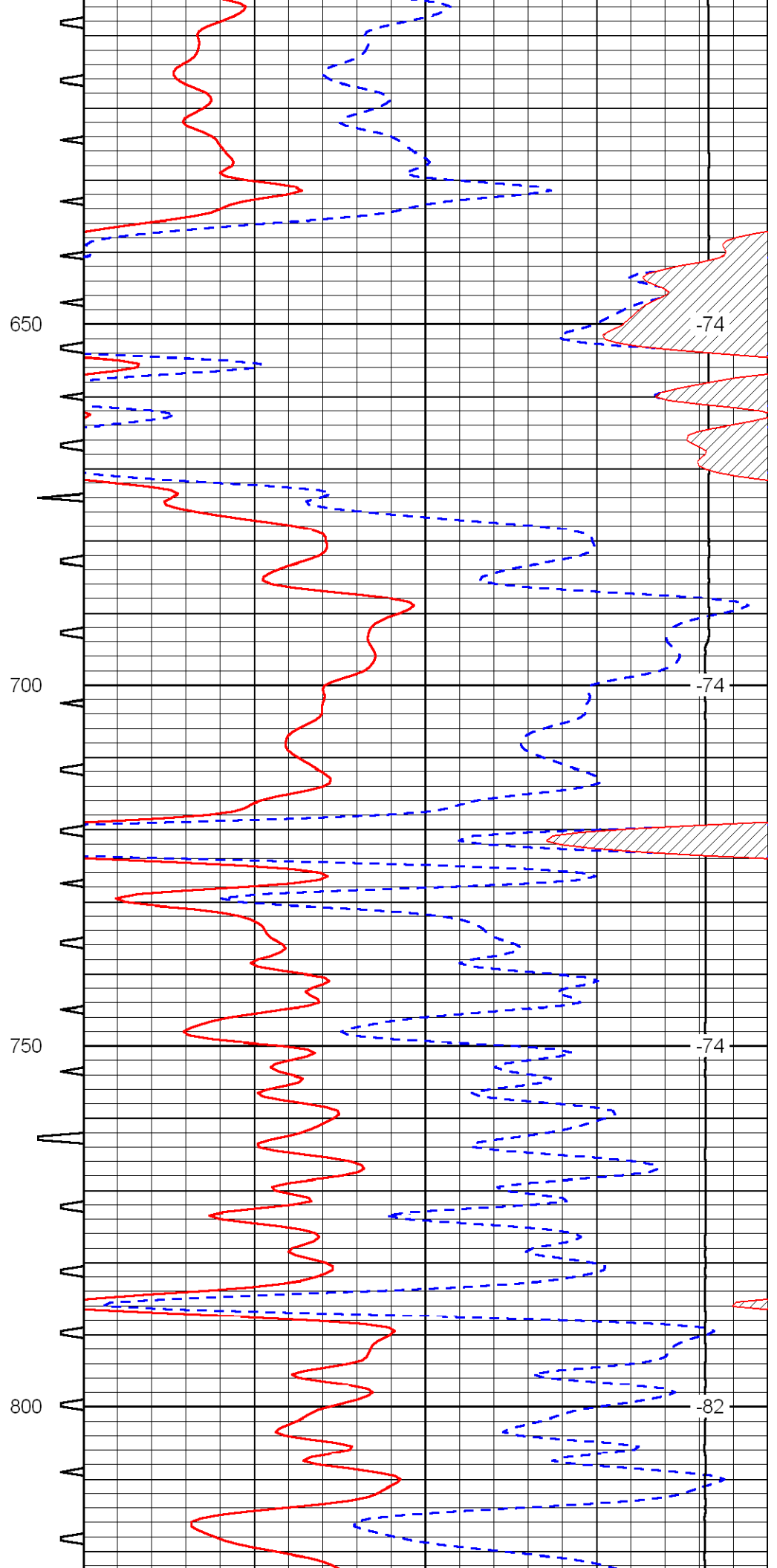
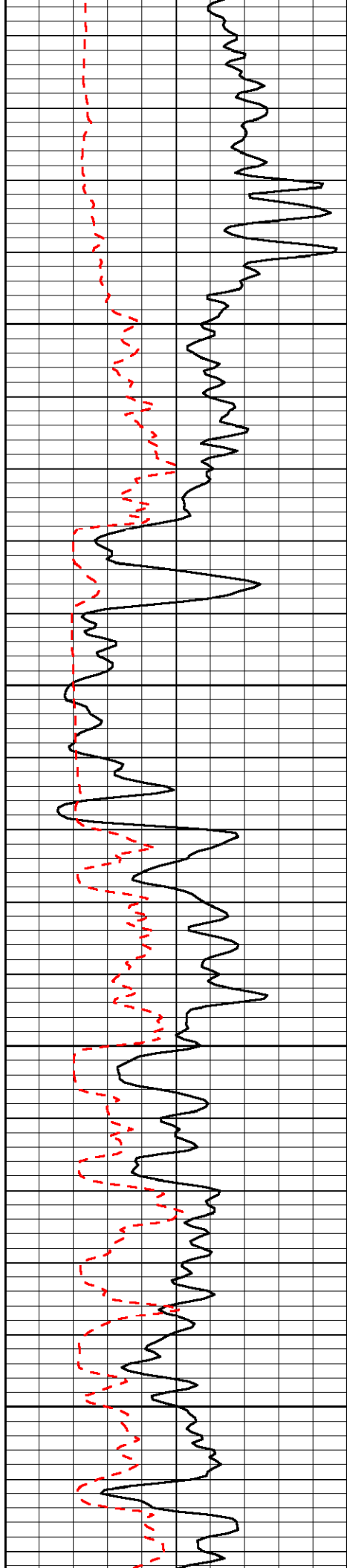
 I70 & Riga Rd, 2 1/2 N to J Rd, 1 W to 370, 1 N to I Rd
 3/4 W, N into

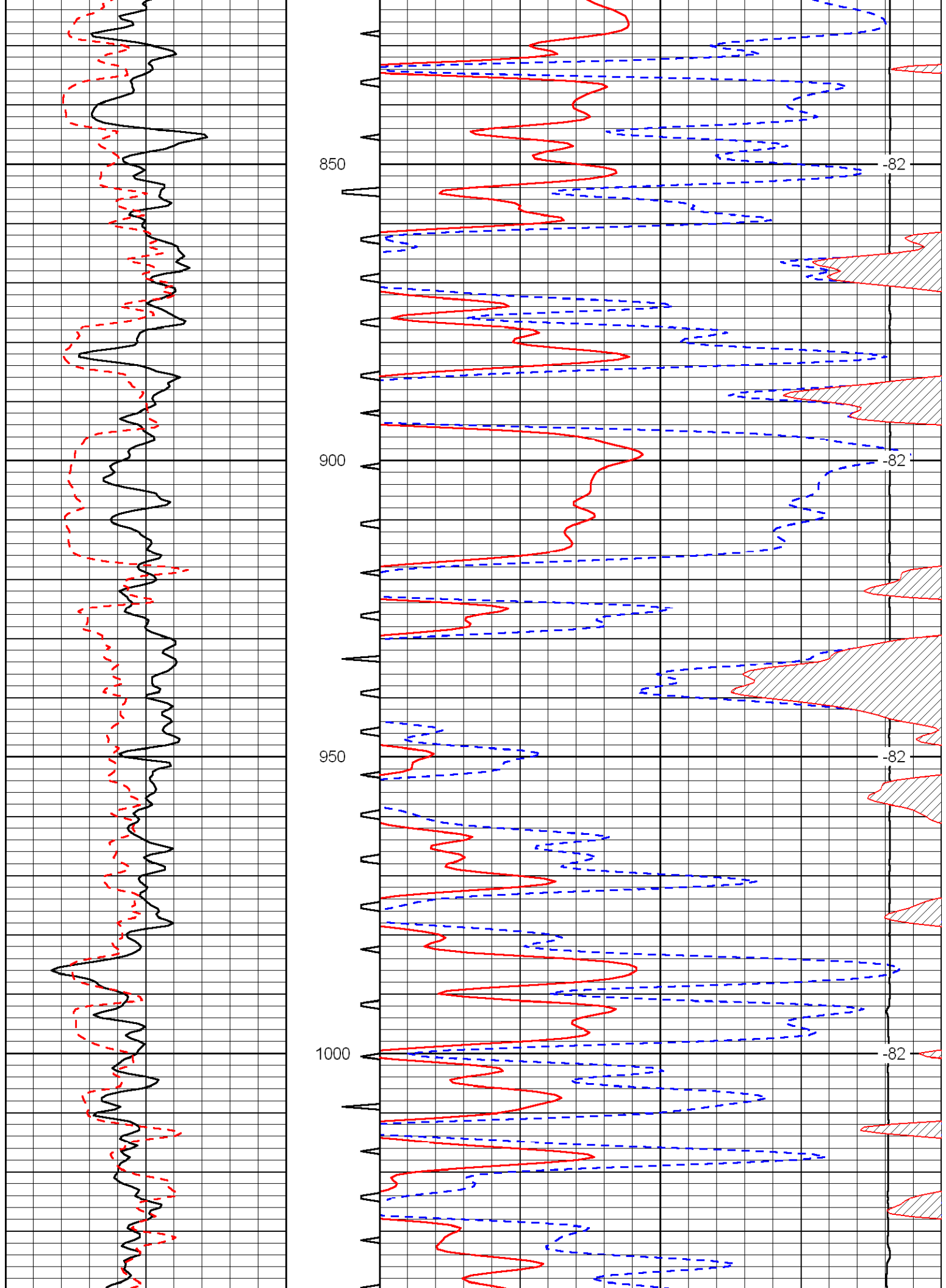
Database File: c:\warrior\data\murfin_kohl unit_ a#1-8\murfin100909hd.db
 Dataset Pathname: dil\murf2in
 Presentation Format: sonic
 Dataset Creation: Fri Oct 09 22:01:04 2009
 Charted by: Depth in Feet scaled 1:240

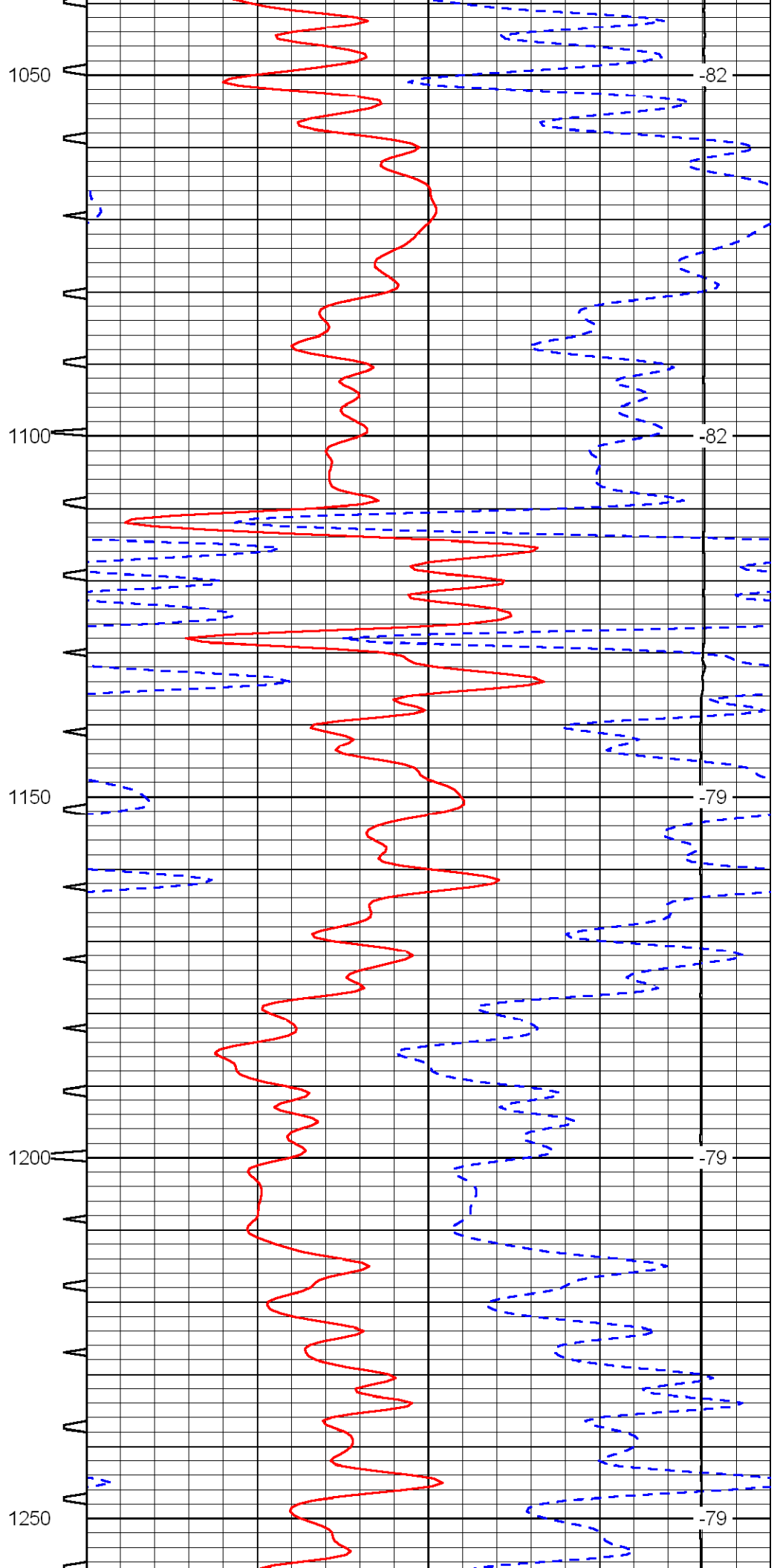
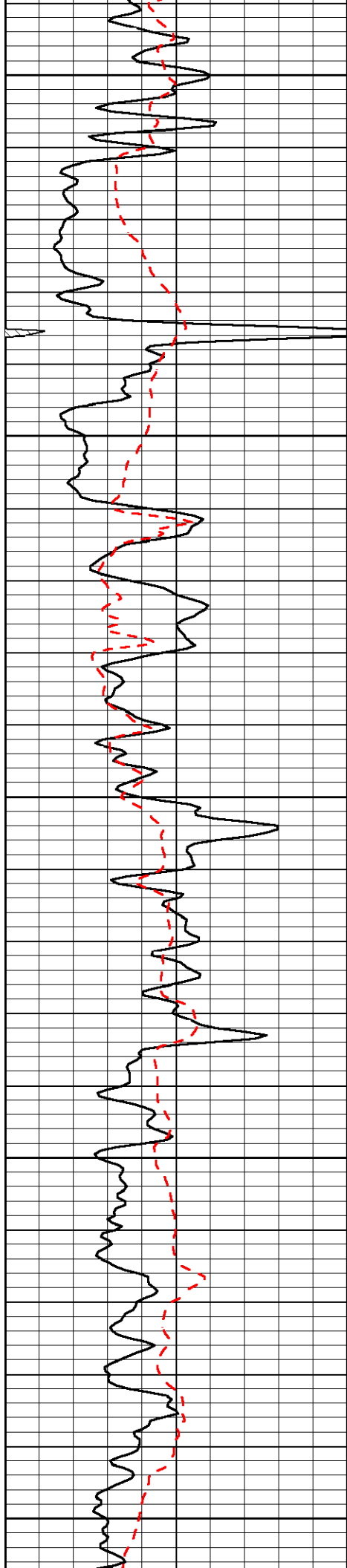
0	Gamma Ray	150	Sonic Int	140	Delta Time (usec/ft) (usec/ft)	40
150	Gamma Ray	300	5 (msec)	0	SPOR (pu)	-10
6	Caliper (in)	16		10000	LTEN (lb) (lb)	0
						LSPD (ft/min)

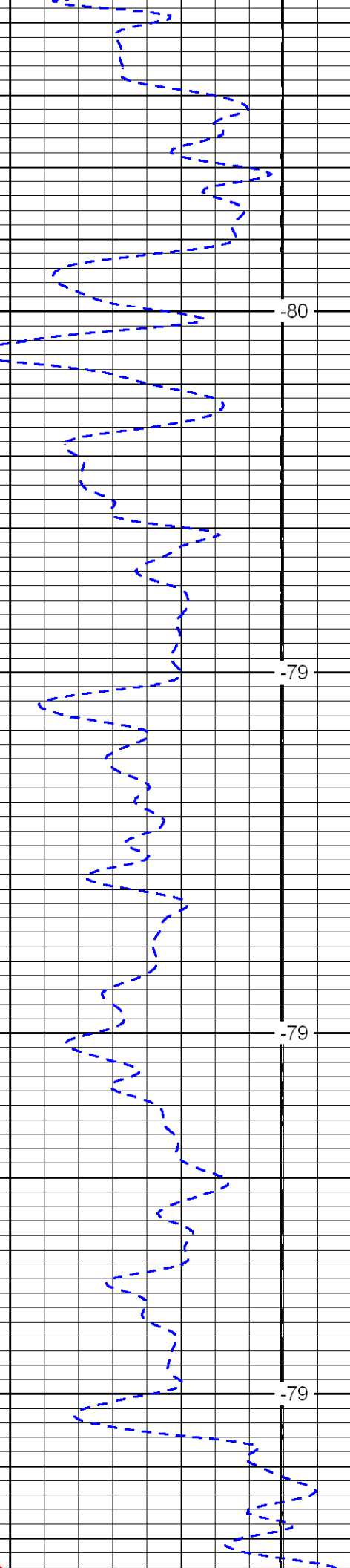
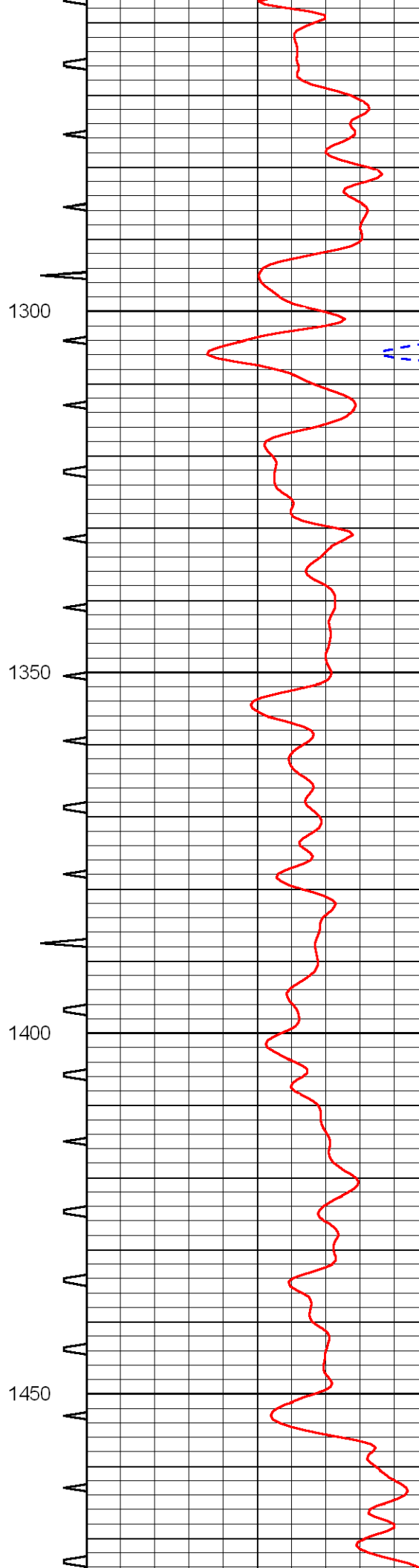
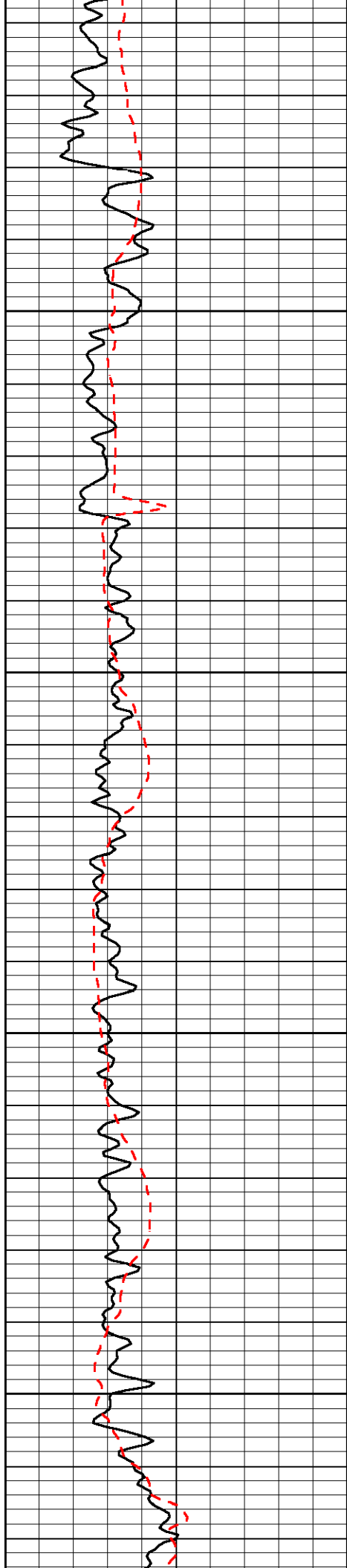


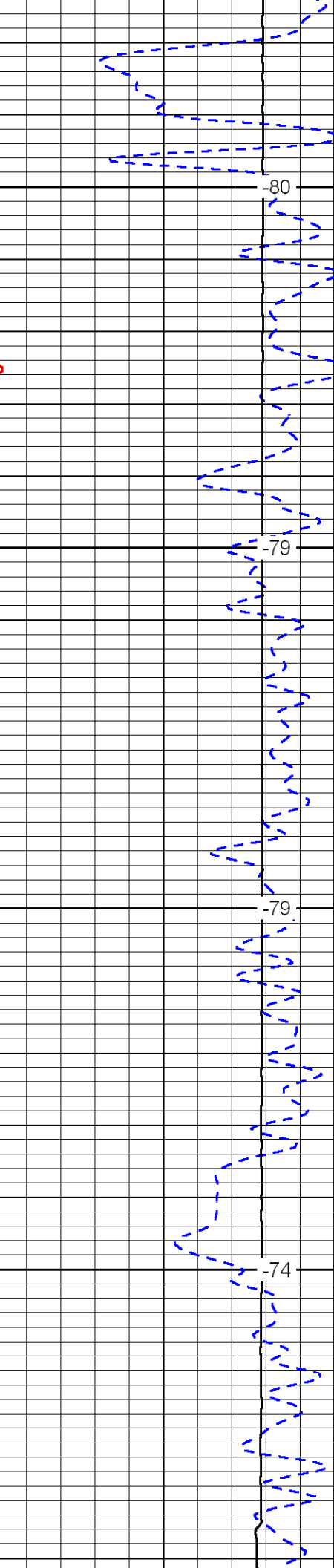
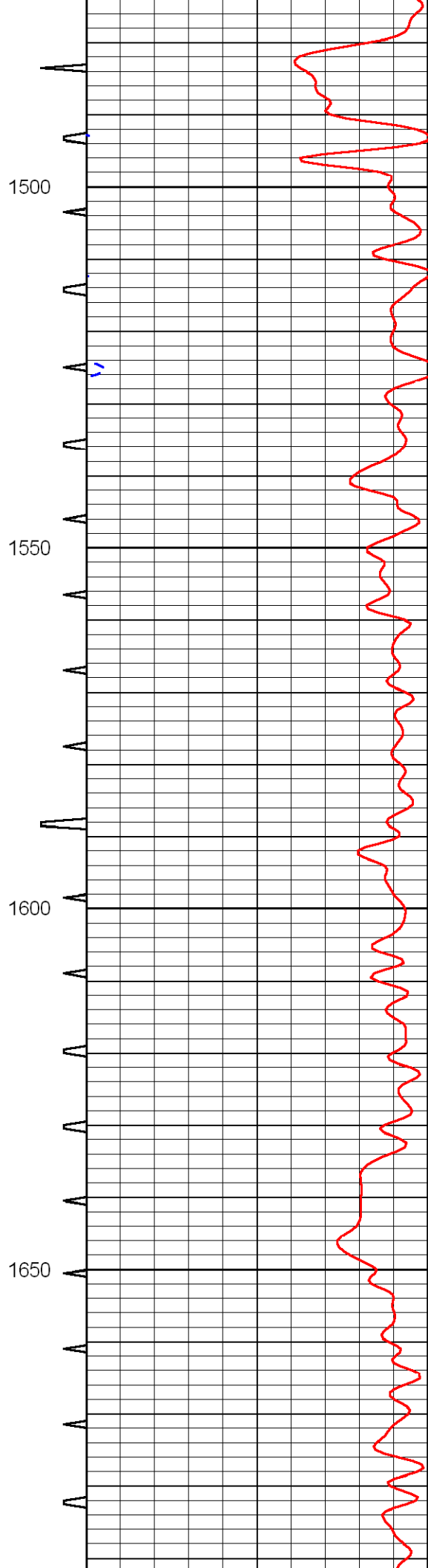
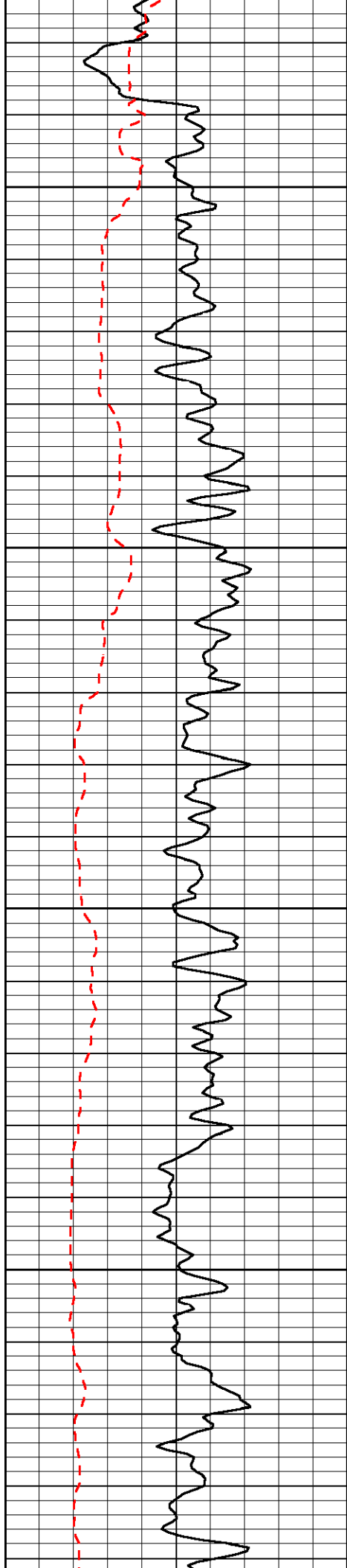












1500

-80

1550

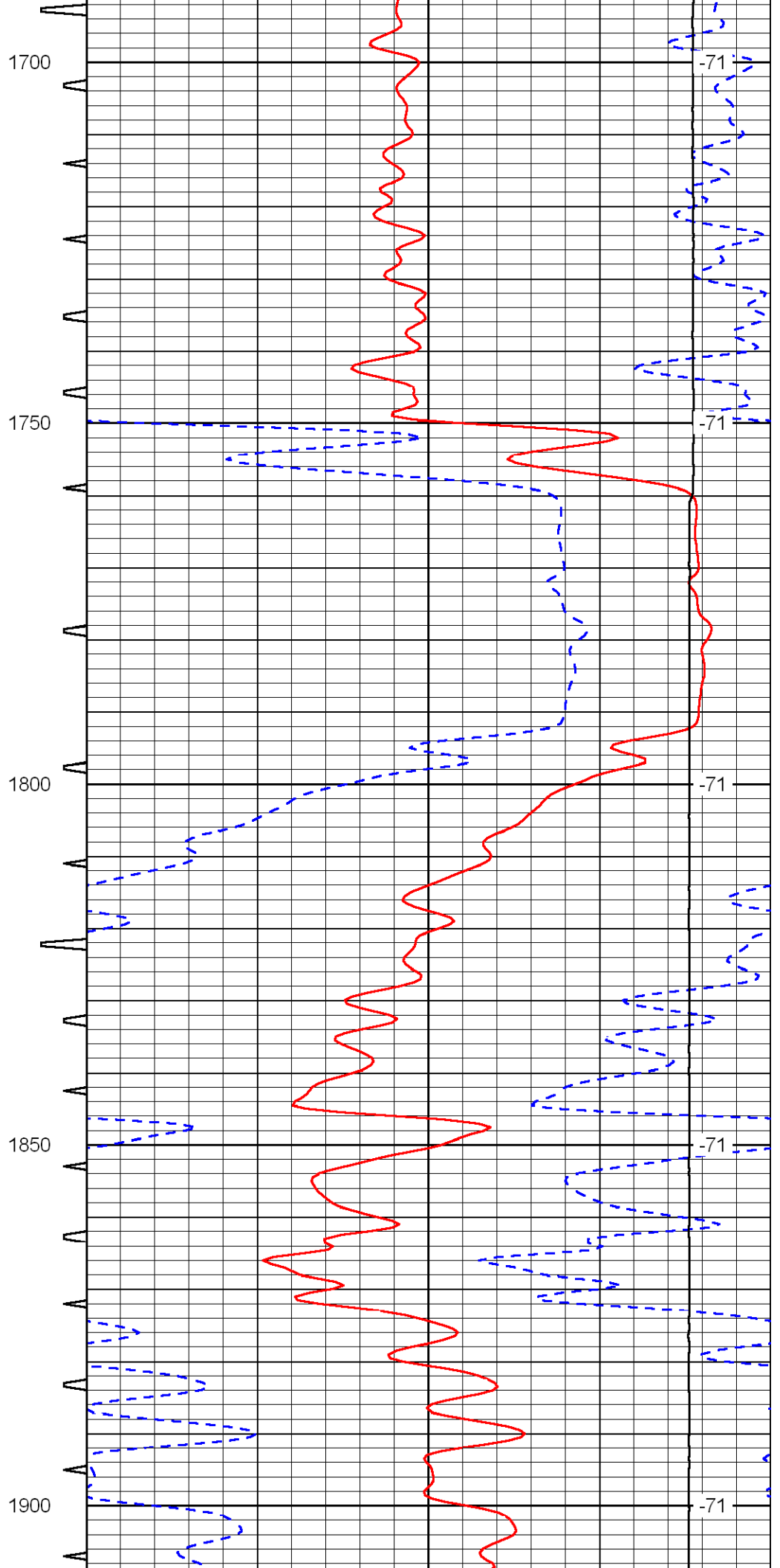
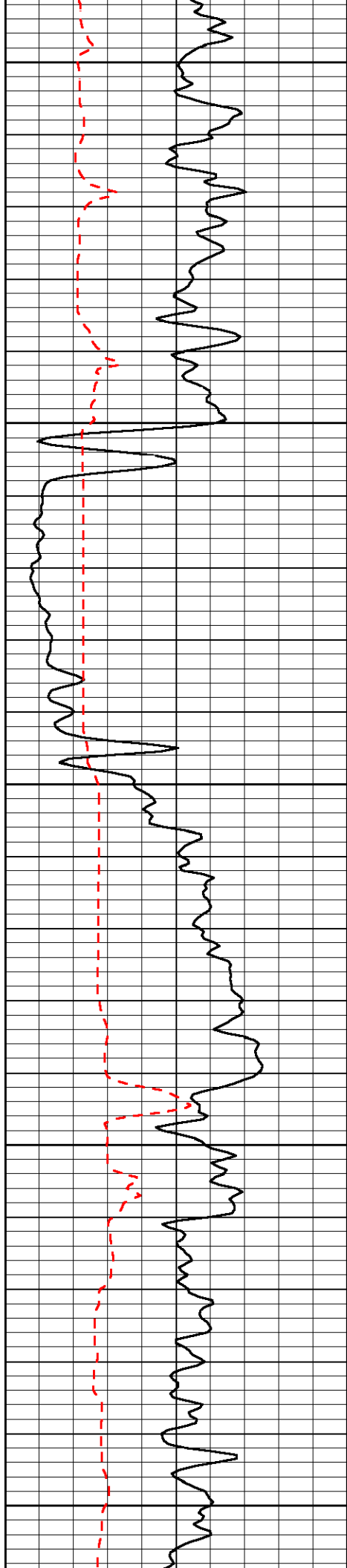
-79

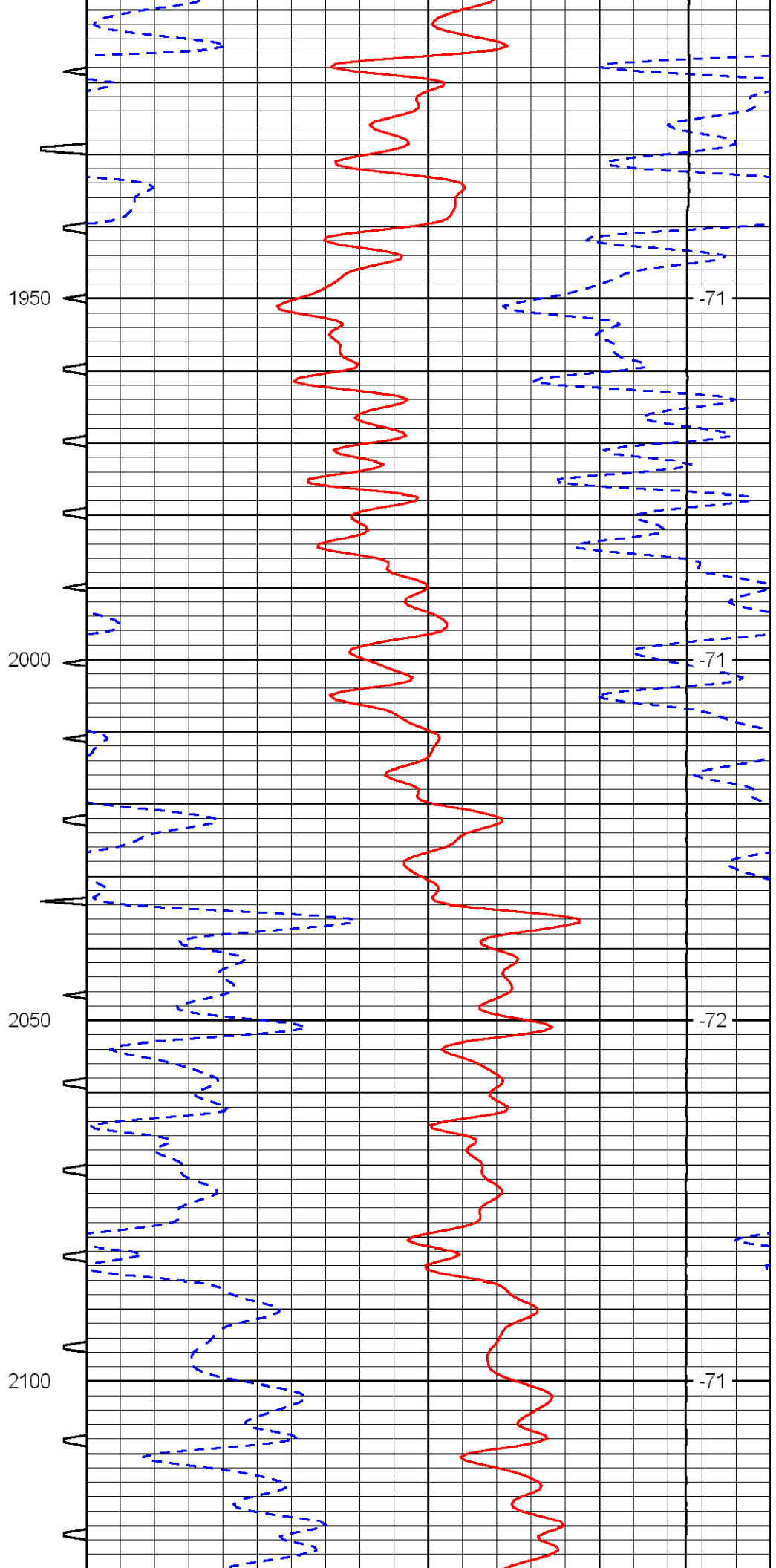
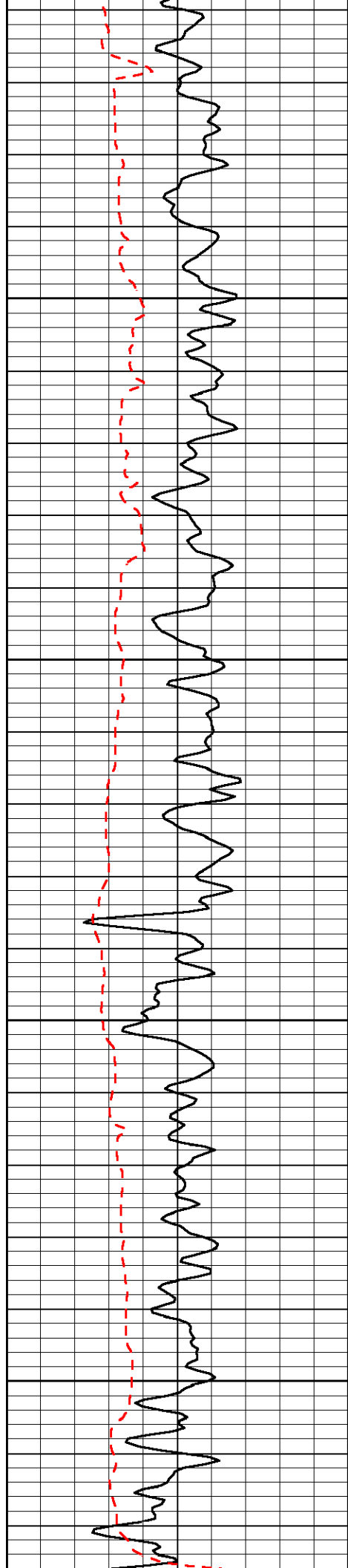
1600

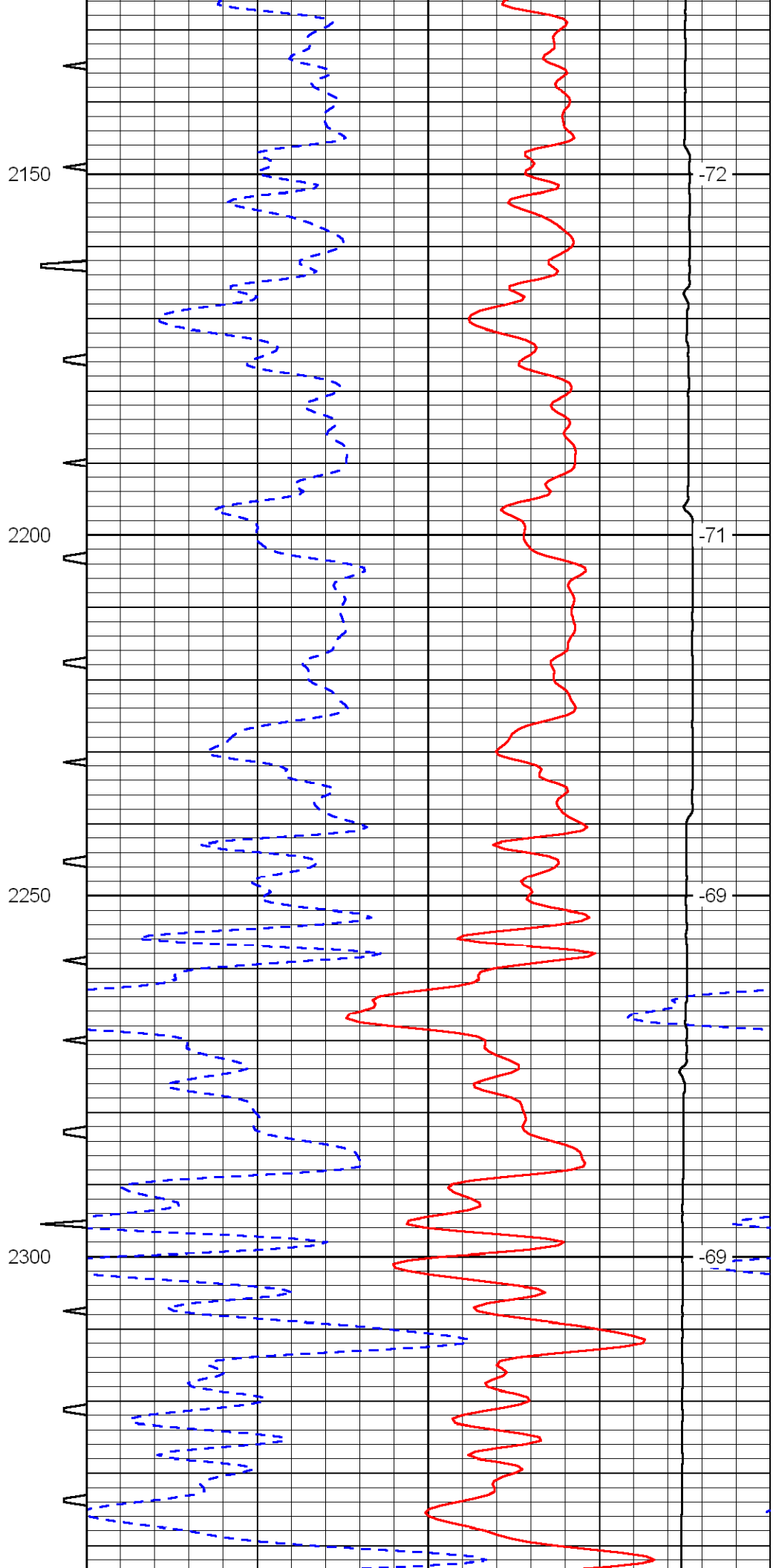
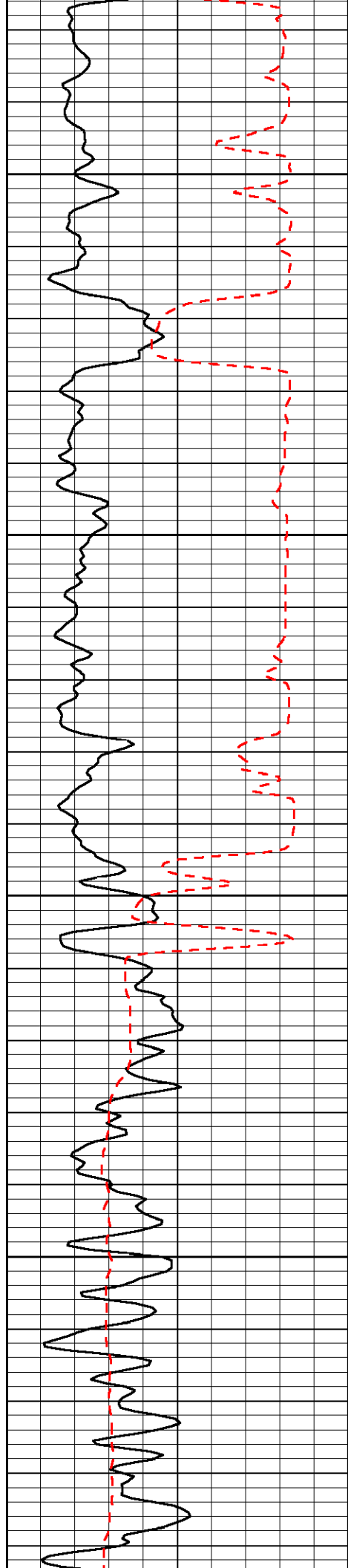
-79

1650

-74







-72

-71

-69

-69

