



Microresistivity Log

DIGITAL LOG

(785) 625-3858

API No.	15-195-22,630-00-00		
Company	Murfin Drilling Company, Inc.		
Well	Kohl Unit 'A' # 1-8		
Field	Wildcat		
County	Trego	State	Kansas
Location	2630' FNL & 330' FWL		
Sec: 8	Twp: 12 S	Rge: 21 W	
Permanent Datum	Ground Level	Elevation 2304	Other Services CNL/CDL DIL/BHCS
Log Measured From	Kelly Bushing	5 Ft. Above Perm. Datum	
Drilling Measured From	Kelly Bushing		Elevation K.B. 2309 D.F. 2304 G.L. 2304

Date	10/09/2009
Run Number	Two
Depth Driller	4083
Depth Logger	4082
Bottom Logged Interval	4081
Top Log Interval	3200
Casing Driller	8.625 @ 211
Casing Logger	210
Bit Size	7.875
Type Fluid in Hole	Chemical
Salinity, ppm CL	5,000
Density / Viscosity	9.2 54
pH / Fluid Loss	11.0 6.4
Source of Sample	Flowline
Rm @ Meas. Temp	.40 @ 58
Rmf @ Meas. Temp	.30 @ 58
Rmc @ Meas. Temp	.54 @ 58
Source of Rmf / Rmc	Charts
Rm @ BHT	.20 @ 119
Operating Rig Time	5 Hours
Max Rec. Temp. F	119
Equipment Number	4
Location	Hays
Recorded By	K. Bange
Witnessed By	Paul Gunzelman
	J. Schuler

<<< Fold Here >>>

All interpretations are opinions based on inferences from electrical or other measurements and we cannot and do not guarantee the accuracy or correctness of any interpretation, and we shall not, except in the case of gross or willful negligence on our part, be liable or responsible for any loss, costs, damages, or expenses incurred or sustained by anyone resulting from any interpretation made by any of our officers, agents or employees. These interpretations are also subject to our general terms and conditions set out in our current Price Schedule.

Comments

Thank you for using Log-Tech, Inc.
(785) 625-3858

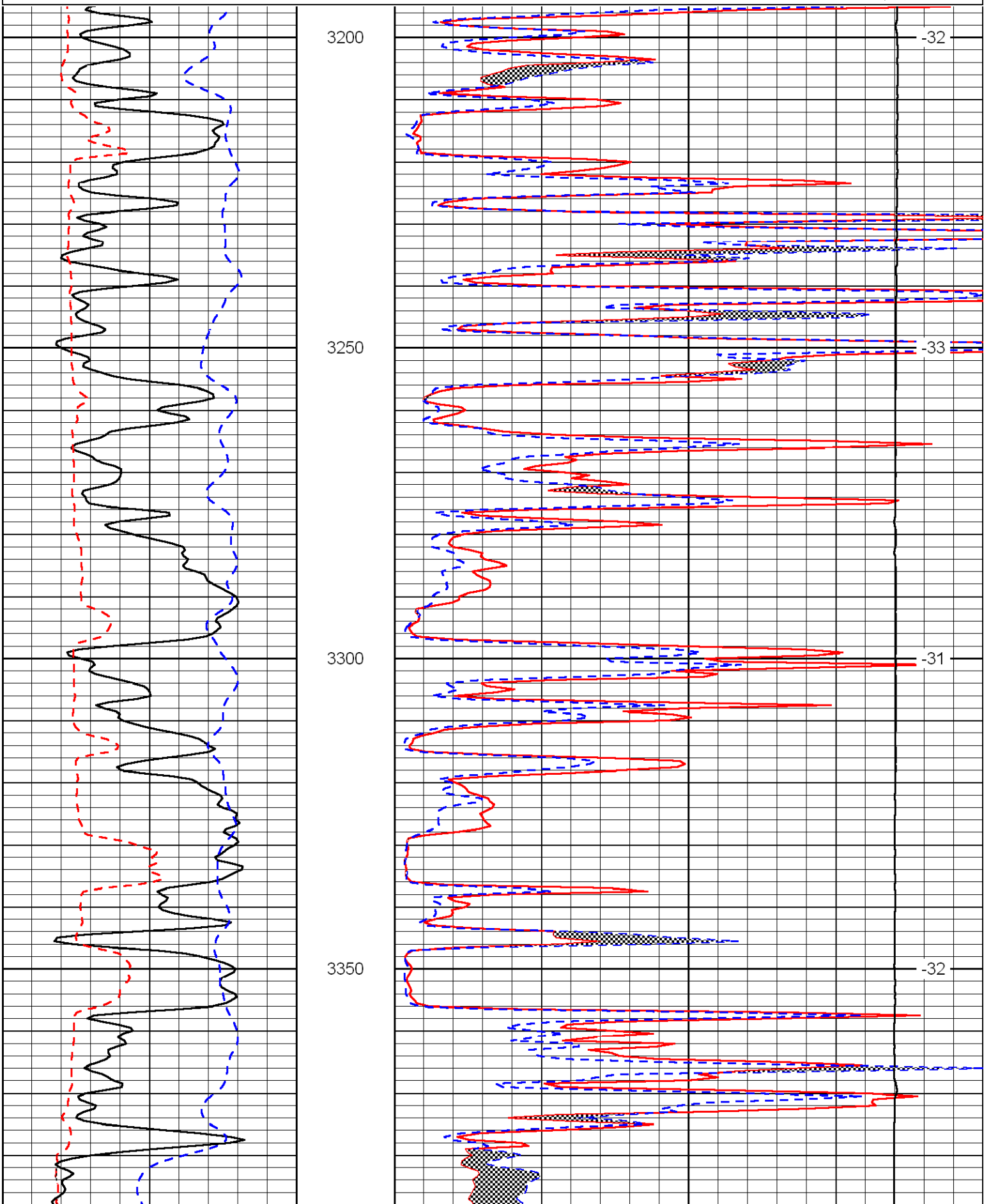
170 & Riga Rd, 2 1/2 N to J Rd, 1 W to 370, 1 N to I Rd
3/4 W, N into

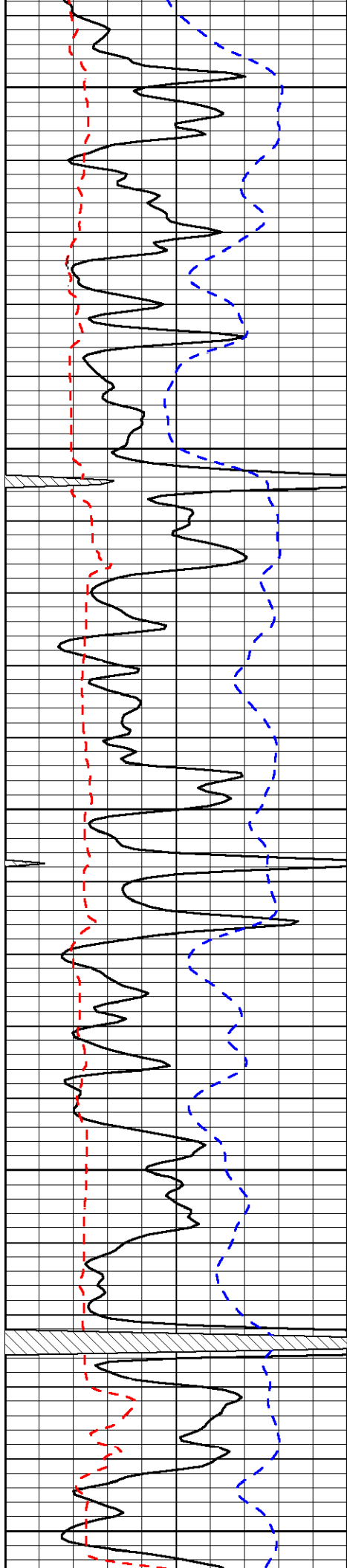
Database File: c:\warrior\data\murfin_kohl unit_ a#1-8\murfin100909hd.db
 Dataset Pathname: dil/murf2in
 Presentation Format: micro
 Dataset Creation: Fri Oct 09 22:01:04 2009
 Charted by: Depth in Feet scaled 1:240

0	Gamma Ray	150
6	Micro Log Caliper (in)	16
-200	SP (MV)	0

0	Micro Inverse 1 X 1 (Ohm-m)	40
0	Micro Normal 2" (Ohm-m)	40
10000	Line Weight (lb)	0

LSPD
(ft/min)





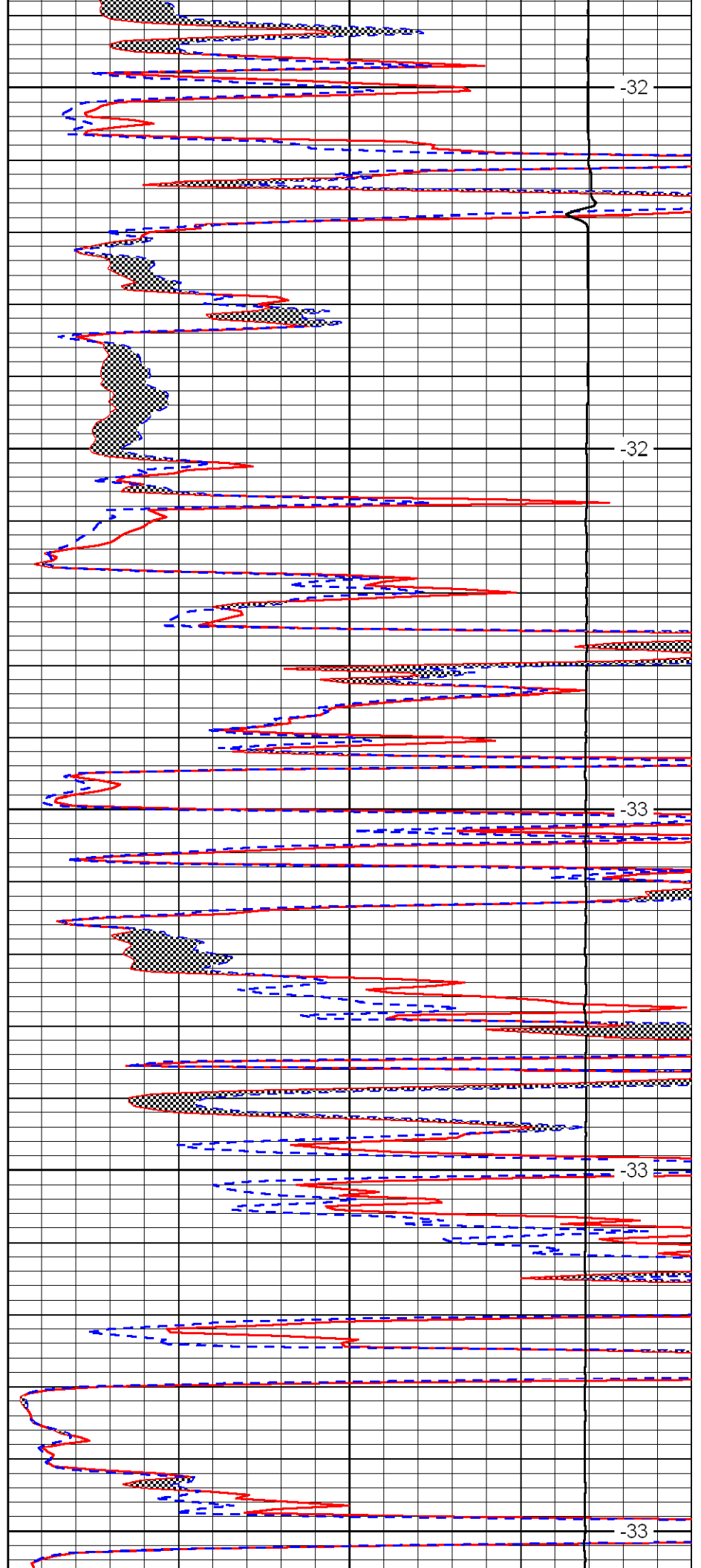
3400

3450

3500

3550

3600



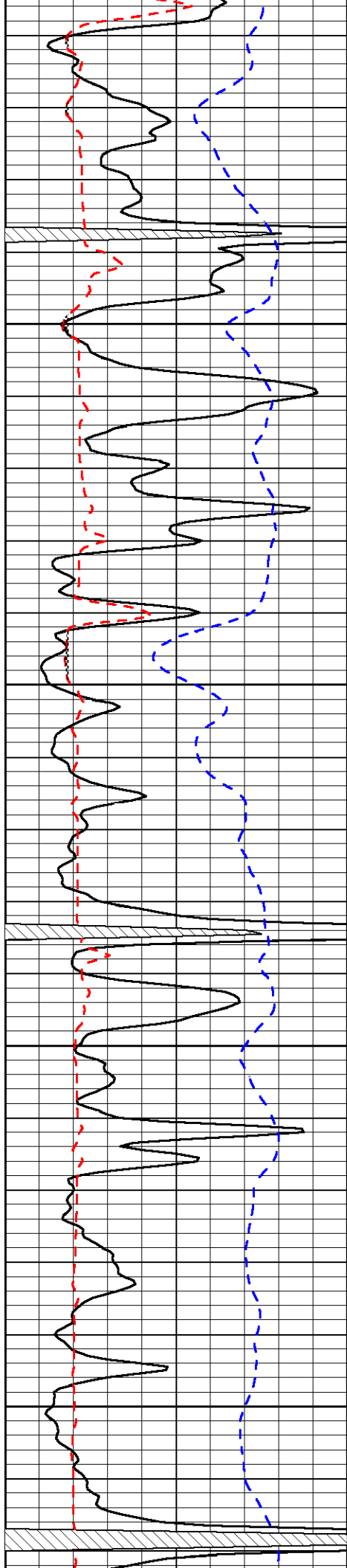
-32

-32

-33

-33

-33

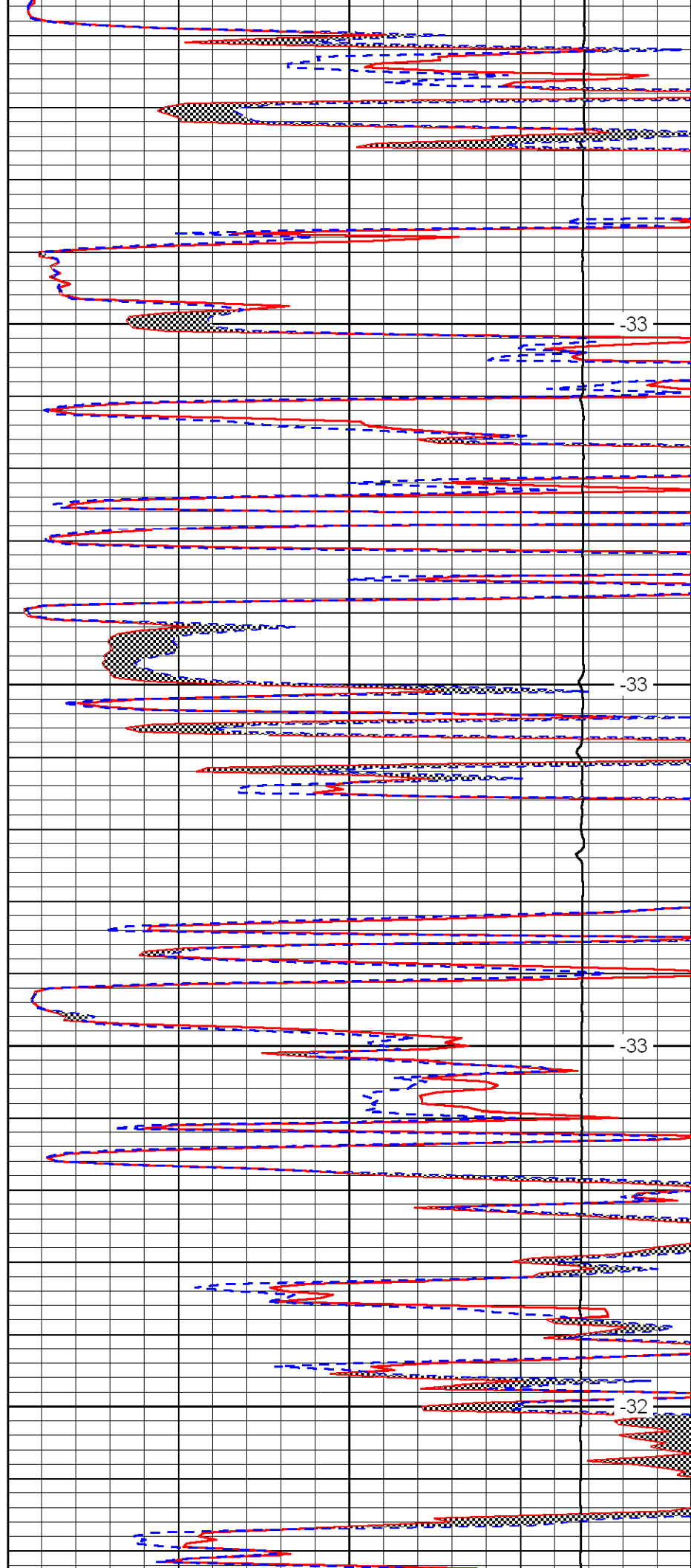


3650

3700

3750

3800

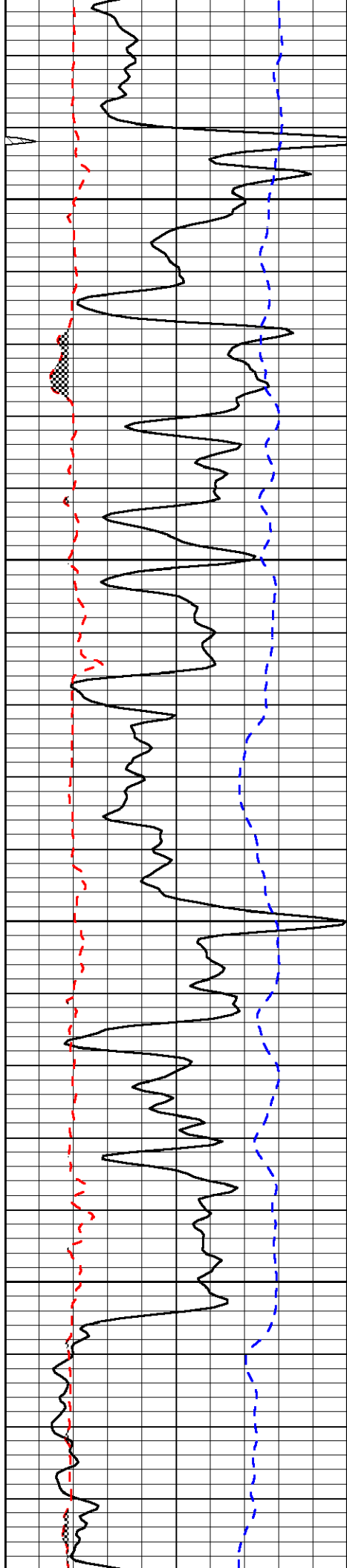


-33

-33

-33

-32

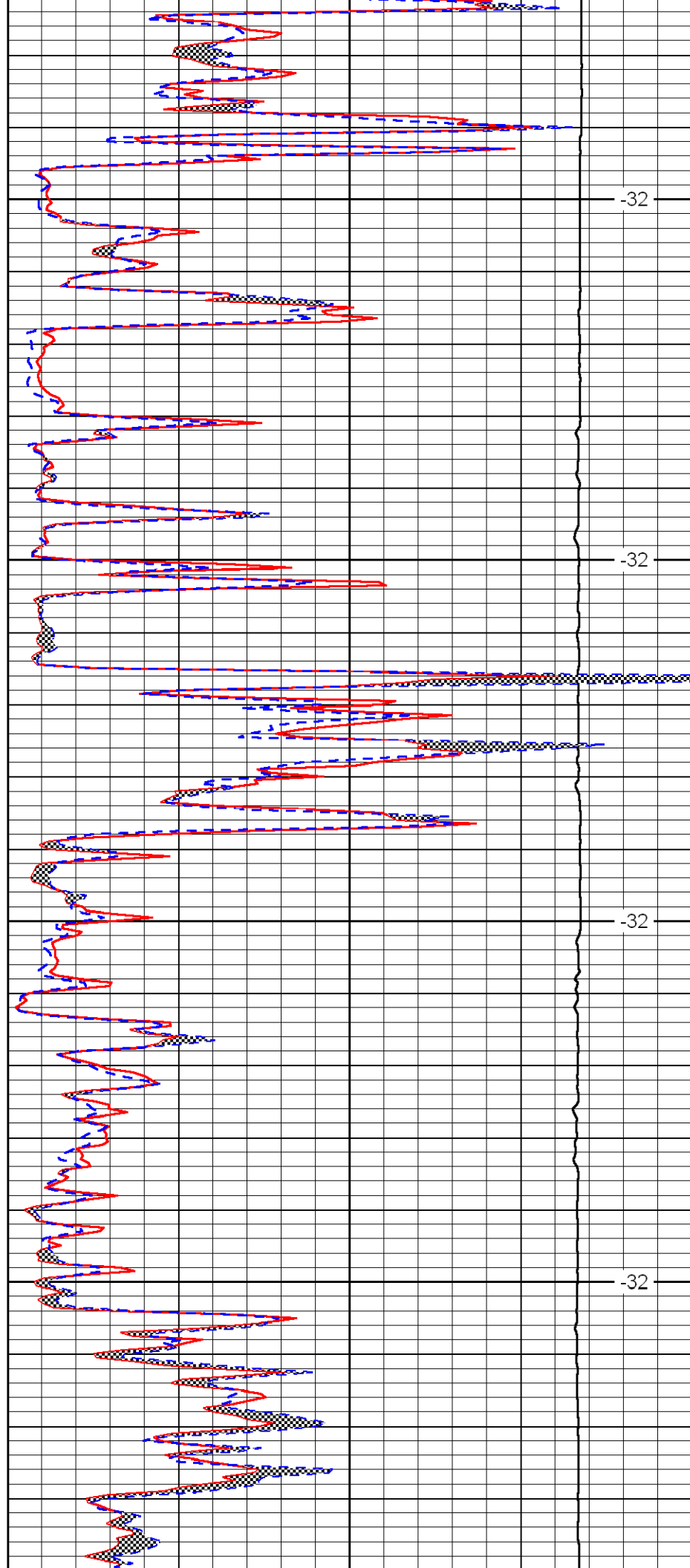


3850

3900

3950

4000

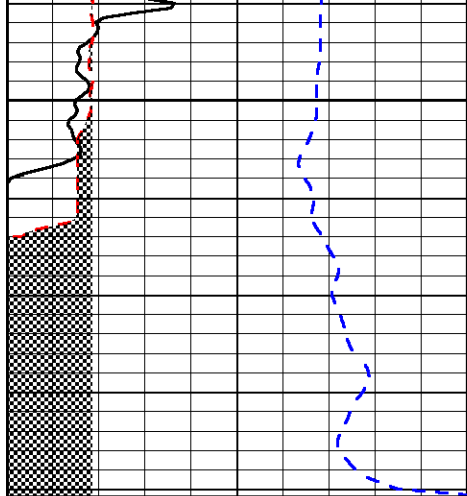


-32

-32

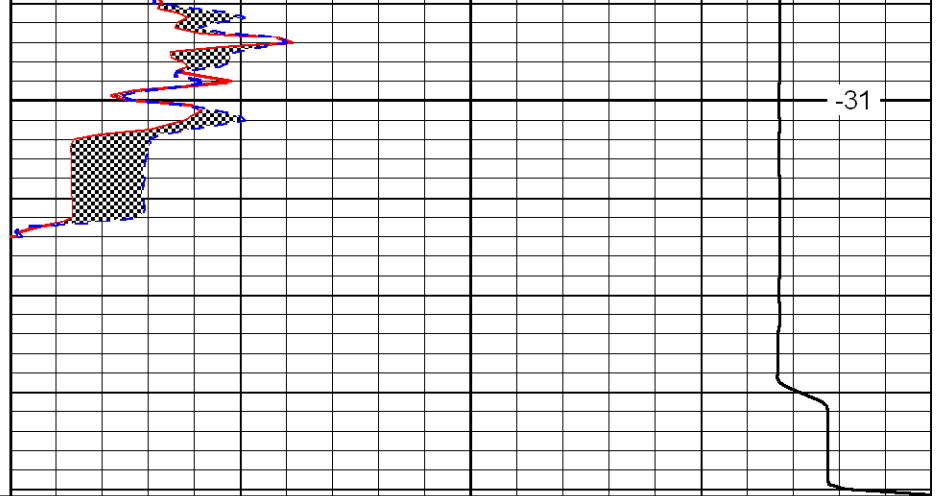
-32

-32



4050

0	Gamma Ray	150
6	Micro Log Caliper (in)	16
-200	SP (MV)	0



-31

0	Micro Inverse 1 X 1 (Ohm-m)	40
0	Micro Normal 2" (Ohm-m)	40
10000	Line Weight (lb)	0

LSPD
(ft/min)