



Dual Compensated
Porosity Log

DIGITAL LOG (785) 625-3858

API No. 15-195-22,630-00-00

Company Murfin Drilling Company, Inc.
Well Kohl Unit 'A' # 1-8
Field Wildcat
County Trego State Kansas

Location 2630' FNL & 330' FWL
Sec: 8 Twp: 12 S Rge: 21 W

Other Services
DIL
MEL/BHCS

Permanent Datum Ground Level Elevation 2304
Log Measured From Kelly Bushing 5 Ft. Above Perm. Datum
Drilling Measured From Kelly Bushing

Elevation
K.B. 2309
D.F.
G.L. 2304

Date 10/09/2009

Run Number One

Type Log CNL / CDL

Depth Driller 4083

Depth Logger 4082

Bottom Logged Interval 4061

Top Logged Interval 3200

Type Fluid In Hole Chemical

Salinity, PPM CL 5,000

Density 9.2

Level Full

Max. Rec. Temp. F 119

Operating Rig Time 5 Hours

Equipment -- Location 4 Hays

Recorded By K. Bange J. Schuler

Witnessed By Paul Gunzelman

Run No	Bit	Borehole Record		Casing Record	
		From	To	From	To
1	12.25	00	211	8.625	24#
2	7.875	211	4083		

<<< Fold Here >>>

All interpretations are opinions based on inferences from electrical or other measurements and we cannot and do not guarantee the accuracy or correctness of any interpretation, and we shall not, except in the case of gross or willful negligence on our part, be liable or responsible for any loss, costs, damages, or expenses incurred or sustained by anyone resulting from any interpretation made by any of our officers, agents or employees. These interpretations are also subject to our general terms and conditions set out in our current Price Schedule.

Comments

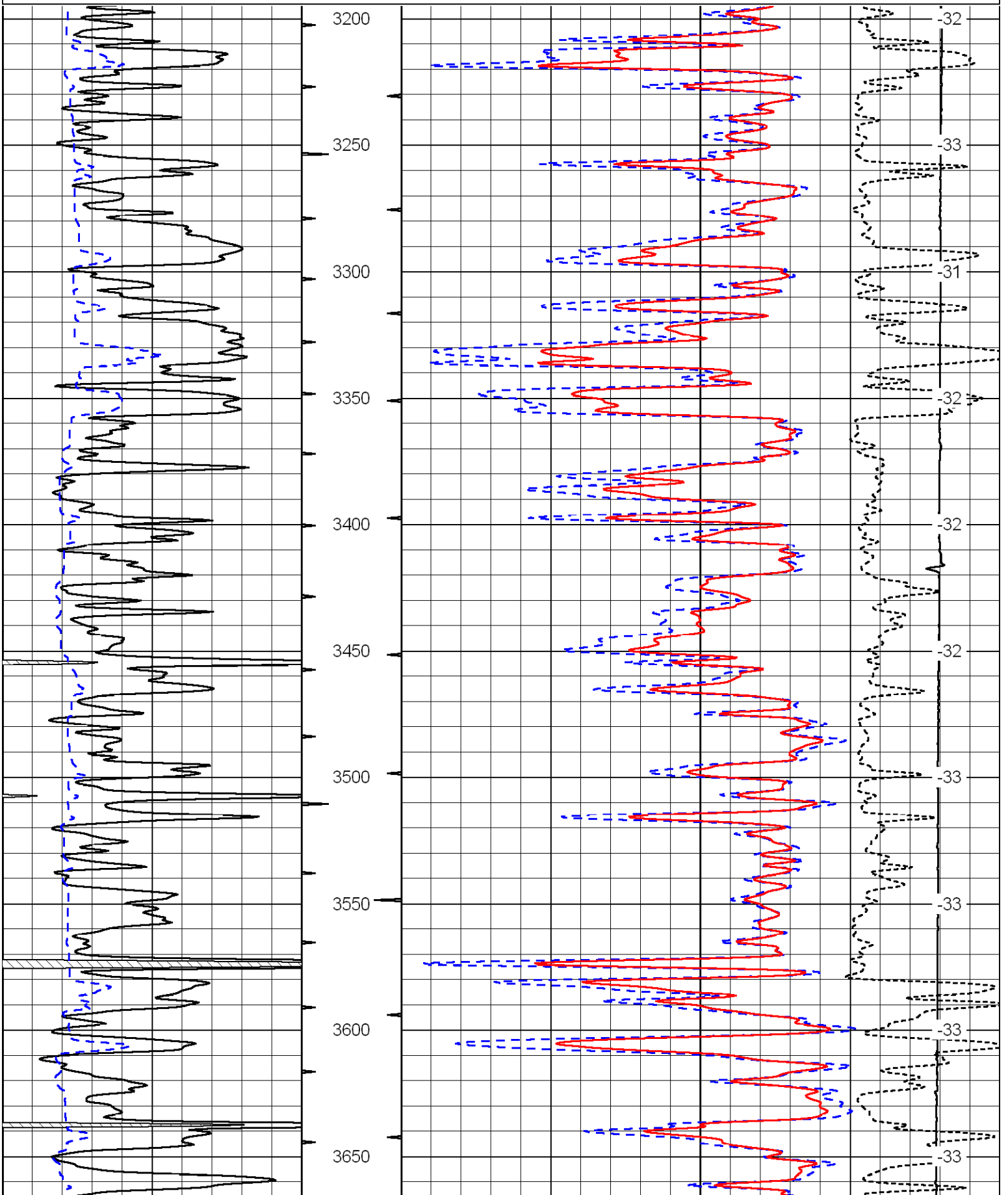
Thank you for using Log-Tech, Inc.
(785) 625-3858

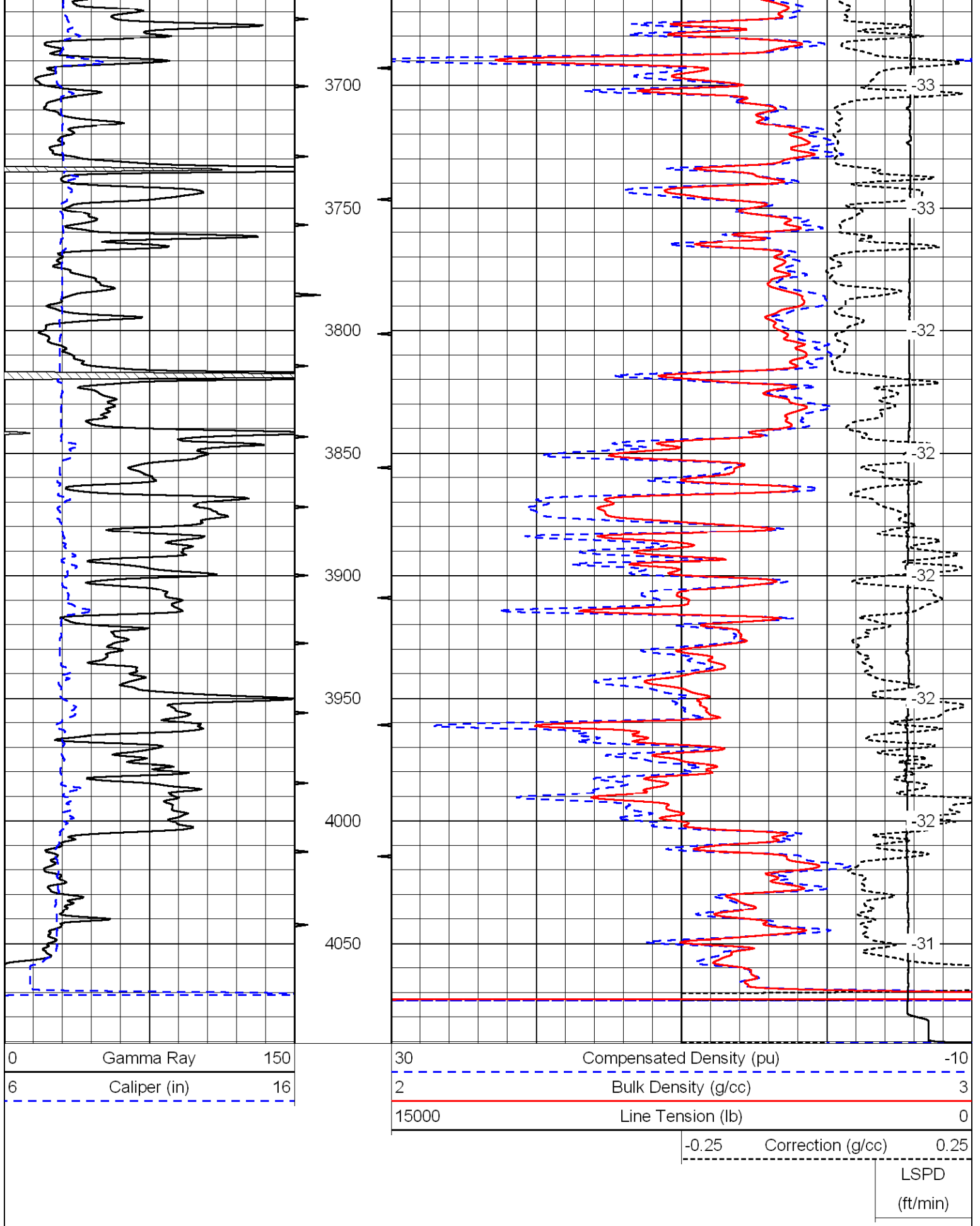
170 & Riga Rd, 2 1/2 N to J Rd, 1 W to 370, 1 N to I Rd
3/4 W, N into

Database File: c:\warrior\data\murfin_kohl unit_ a#1-8\murfin100909hd.db
Dataset Pathname: dil\murf2in
Presentation Format: cdl
Dataset Creation: Fri Oct 09 22:01:04 2009
Charted by: Depth in Feet scaled 1:600

0	Gamma Ray	150
6	Caliper (in)	16

30	Compensated Density (pu)	-10
2	Bulk Density (g/cc)	3
15000	Line Tension (lb)	0
	-0.25 Correction (g/cc)	0.25
	LSPD (ft/min)	





Database File: c:\warrior\data\murfin_kohl unit_ a#1-8\murfin100909hd.db
 Dataset Pathname: dil/murf2in
 Presentation Format: cndlspec

0	Gamma Ray	150
6	Caliper (in)	16

30	Compensated Neutron (Limestone) (pu)	-10
30	Compensated Density (2.71 ma) (pu)	-10
15000	Line Tension (lb)	0

-0.25	Correction (g/cc)	0.25
LSPD (ft/min)		

