



**SUPERIOR**  
Hays,  
Kansas

**SONIC**  
LOG

Company: BUFFALO RESOURCES, LLC.  
Well: NEY #2-23  
Field: ELASSER  
County: RUSSELL  
State: KANSAS

Company: BUFFALO RESOURCES, LLC.  
Well: NEY #2-23  
Field: ELASSER  
County: RUSSELL  
State: KANSAS

Location: 335' FNL & 1490' FEL, NE/4  
API #: 15-167-23597-0000  
SEC 23 TWP 12S RGE 15W  
Permanent Datum: GROUND LEVEL  
Log Measured From: KELLY BUSHING 8' A.G.L.  
Drilling Measured From: KELLY BUSHING  
Elevation: 1681  
Other Services: CDL/CNL DIL/MEL  
Elevation: K.B. 1689, D.F. 1687, G.L. 1681

Date	9/29/09
Run Number	TWO
Depth Driller	3200
Depth Logger	3201
Bottom Logged Interval	3188
Top Log Interval	300
Casing Driller	8 5/8"@355'
Casing Logger	350
Bit Size	7 7/8
Type Fluid In Hole	CHEMICAL MUD
Density / Viscosity	9.2/52
pH / Fluid Loss	8.4/8.8
Source of Sample	FLOWLINE
Rm @ Meas. Temp	.520@82F
Rmf @ Meas. Temp	.390@82F
Rmc @ Meas. Temp	.624@82F
Source of Rmf / Rmc	MEASUREMENT
Rm @ BHT	.391@109F
Time Circulation Stopped	3.5 HOURS
Time Logger on Bottom	12:15 P.M.
Maximum Recorded Temperature	109F
Equipment Number	0836
Location	HAYS, KANSAS
Recorded By	JEFF LUEBBERS
Witnessed By	CURTIS COVEY
	DARON PATTERSON

<<< Fold Here >>>

All interpretations are opinions based on inferences from electrical or other measurements and we cannot and do not guarantee the accuracy or correctness of any interpretation, and we shall not, except in the case of gross or willful negligence on our part, be liable or responsible for any loss, costs, damages, or expenses incurred or sustained by anyone resulting from any interpretation made by any of our officers, agents or employees. These interpretations are also subject to our general terms and conditions set out in our current Price Schedule.

**Comments**

THANK YOU FOR USING SUPERIOR WELL SERVICE HAYS, KANSAS (785) 628-6395  
DIRECTIONS  
RUSSELL, KS. & I-70, 9N. ON HWY 281 TO MELLARD RD., 3W., 1/2N., 2 1/4W. TO STOP SIGN, JOG S. W. INTO GATE

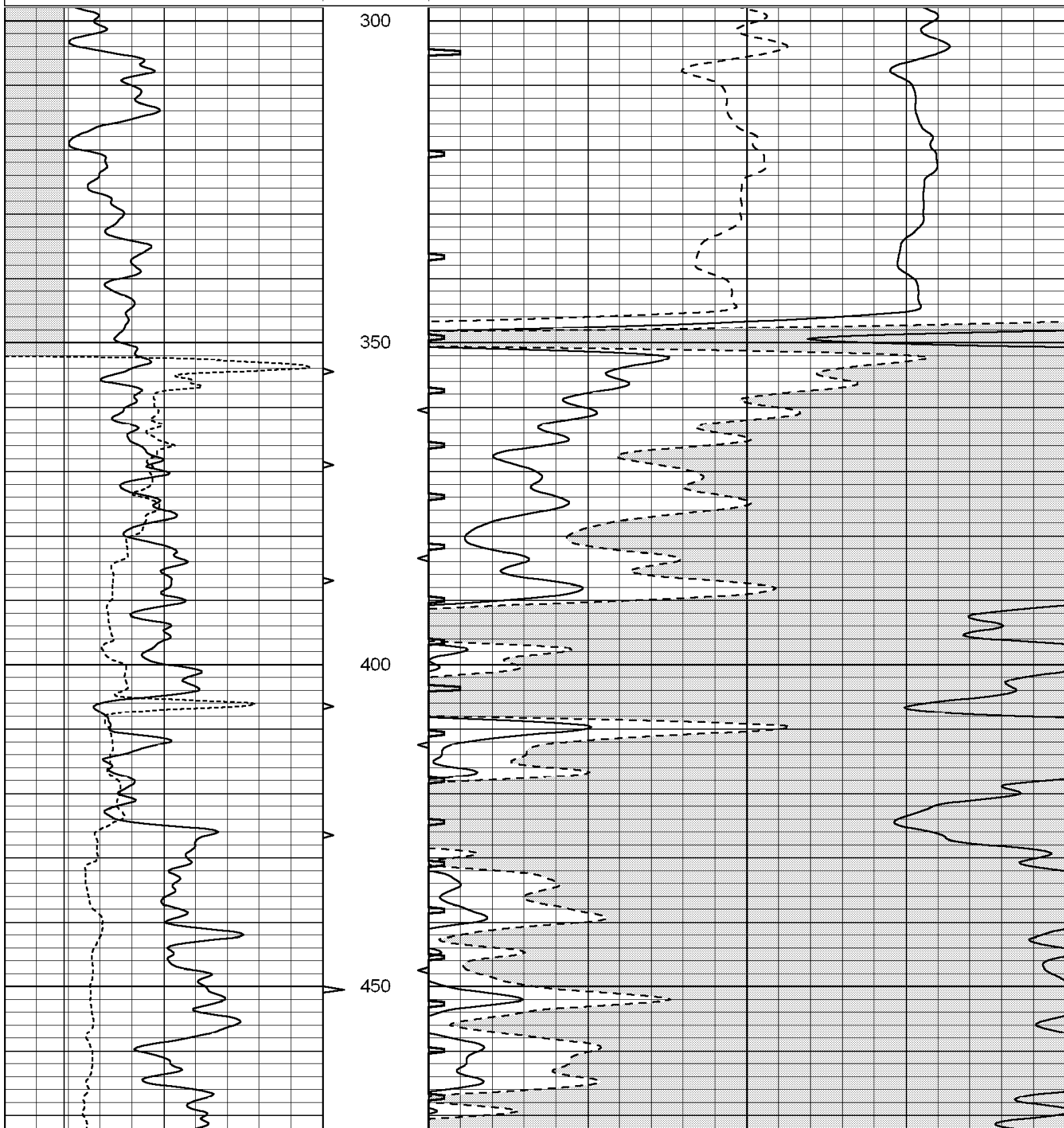


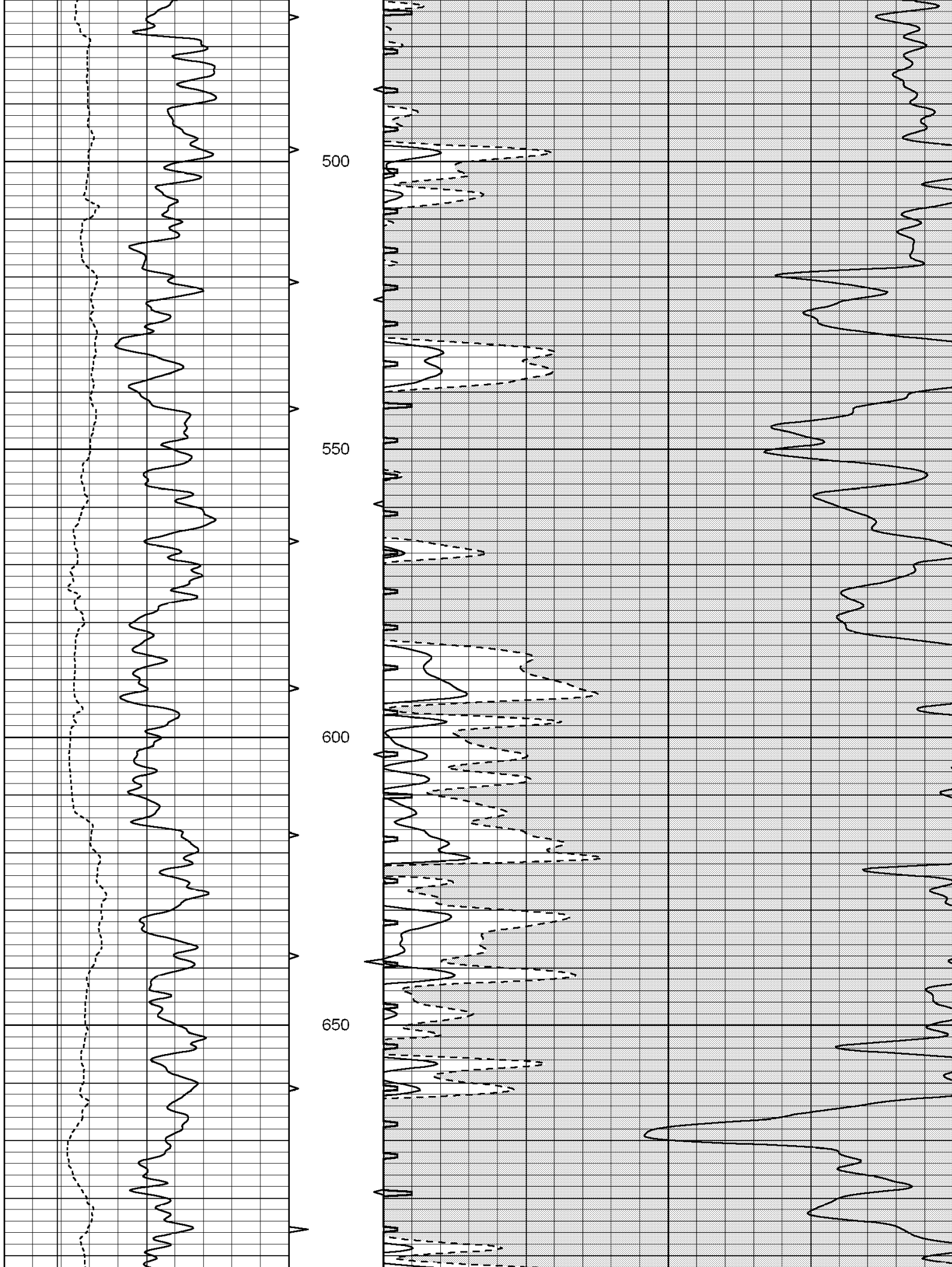
**SUPERIOR**  
Hays,  
Kansas

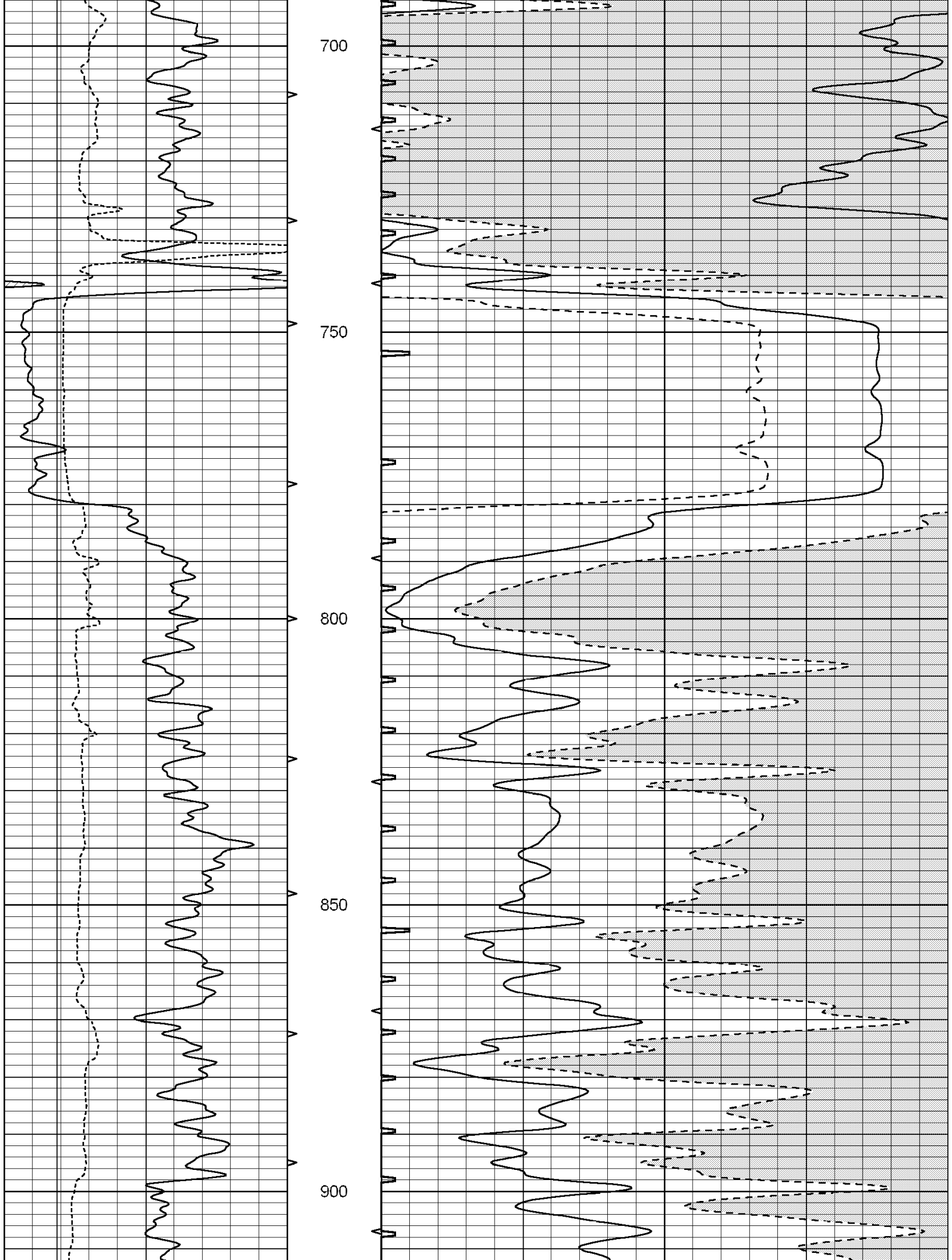
**MAIN SECTION**

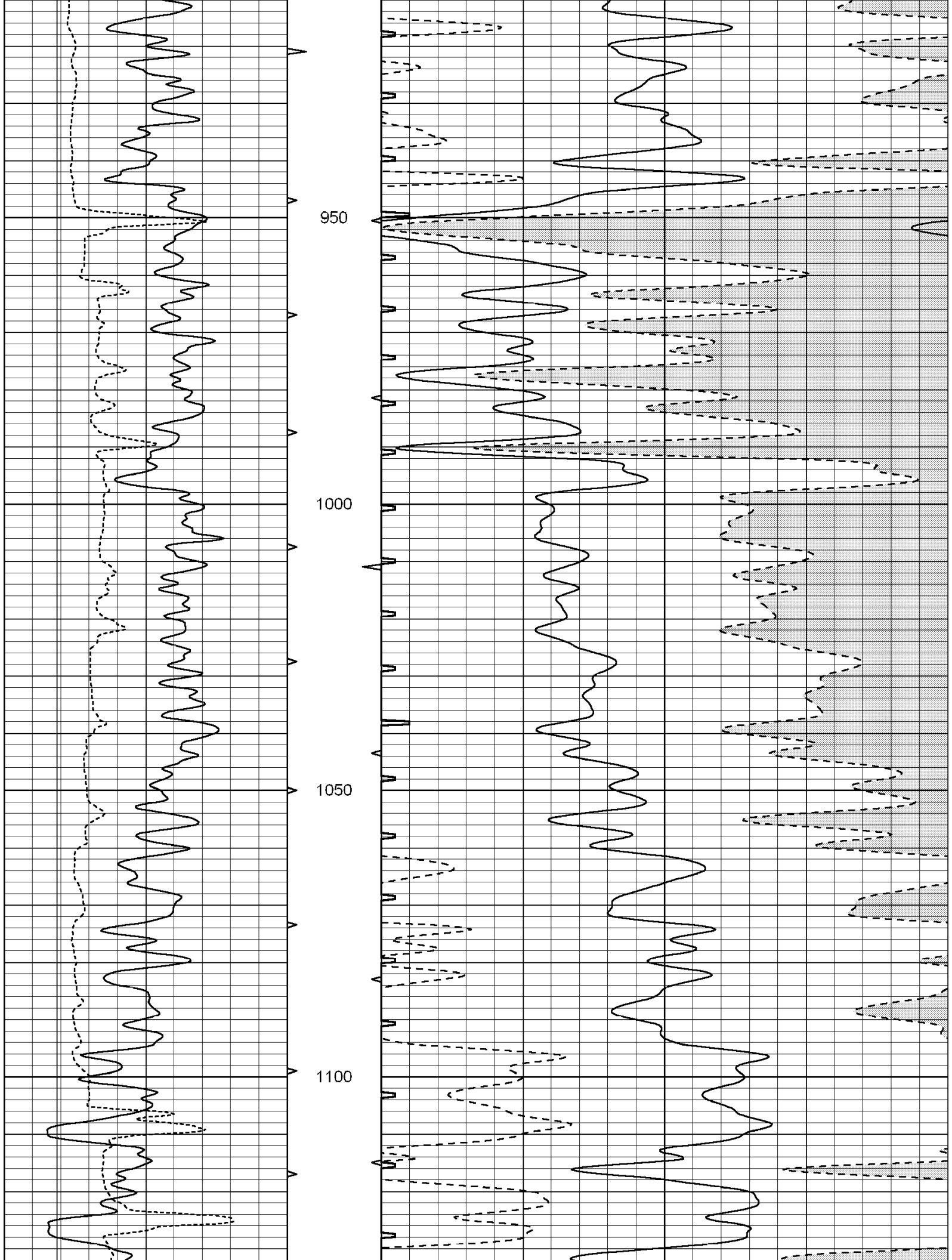
Database File: 004352ddn.db  
 Dataset Pathname: pass6.8  
 Presentation Format: slt  
 Dataset Creation: Tue Sep 29 15:29:28 2009 by Calc Open-Cased 060407  
 Charted by: Depth in Feet scaled 1:240

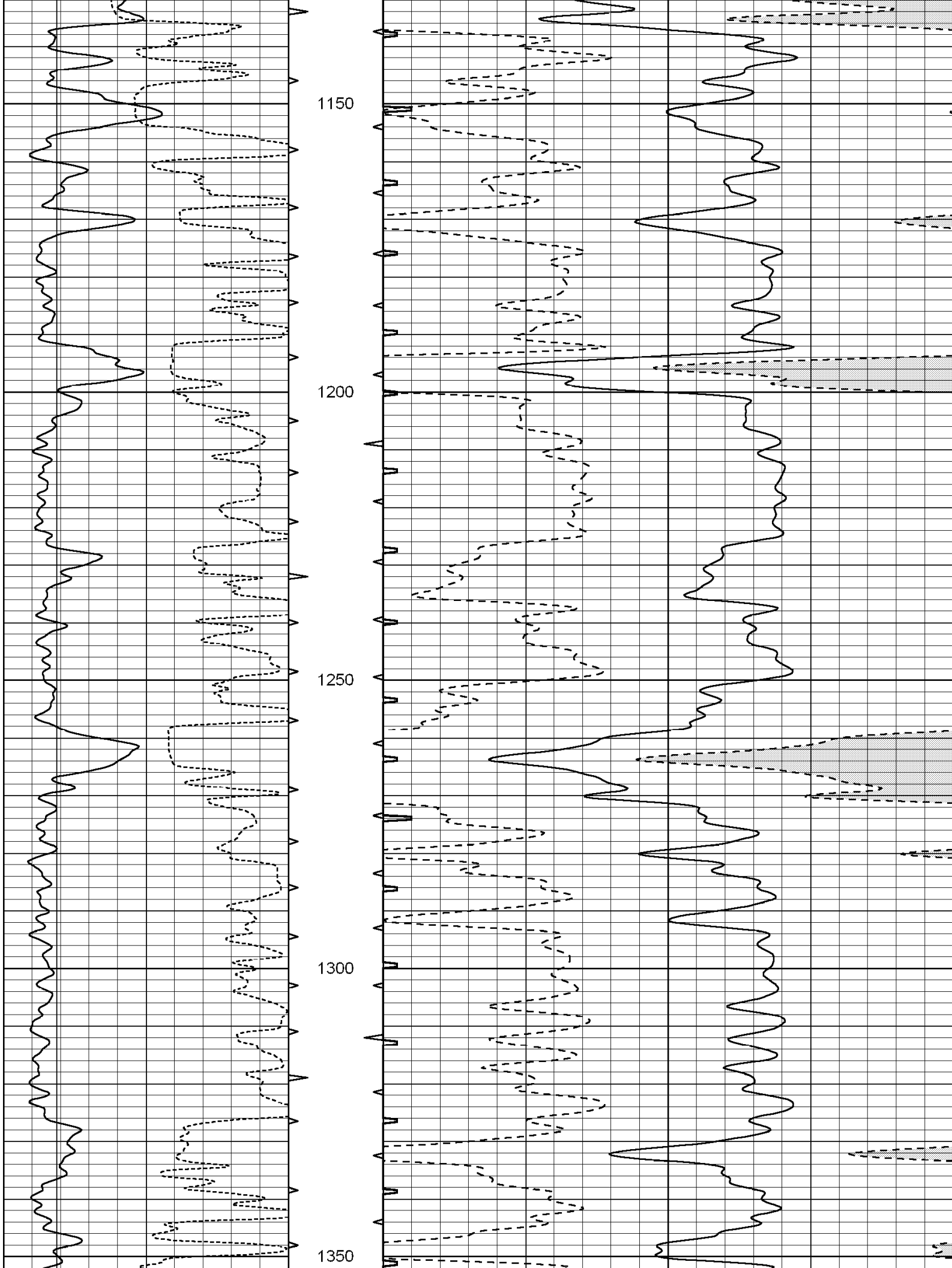
0	GAMMA RAY (GAPI)	150	ABHV	140	DELTA TIME (usec/ft)	40
6	CALIPER (in)	16	10 (ft3) 0	30	SONIC POROSITY (pu)	-10
			TBHV	0	ITT (msec)	20
			0 (ft3) 10			

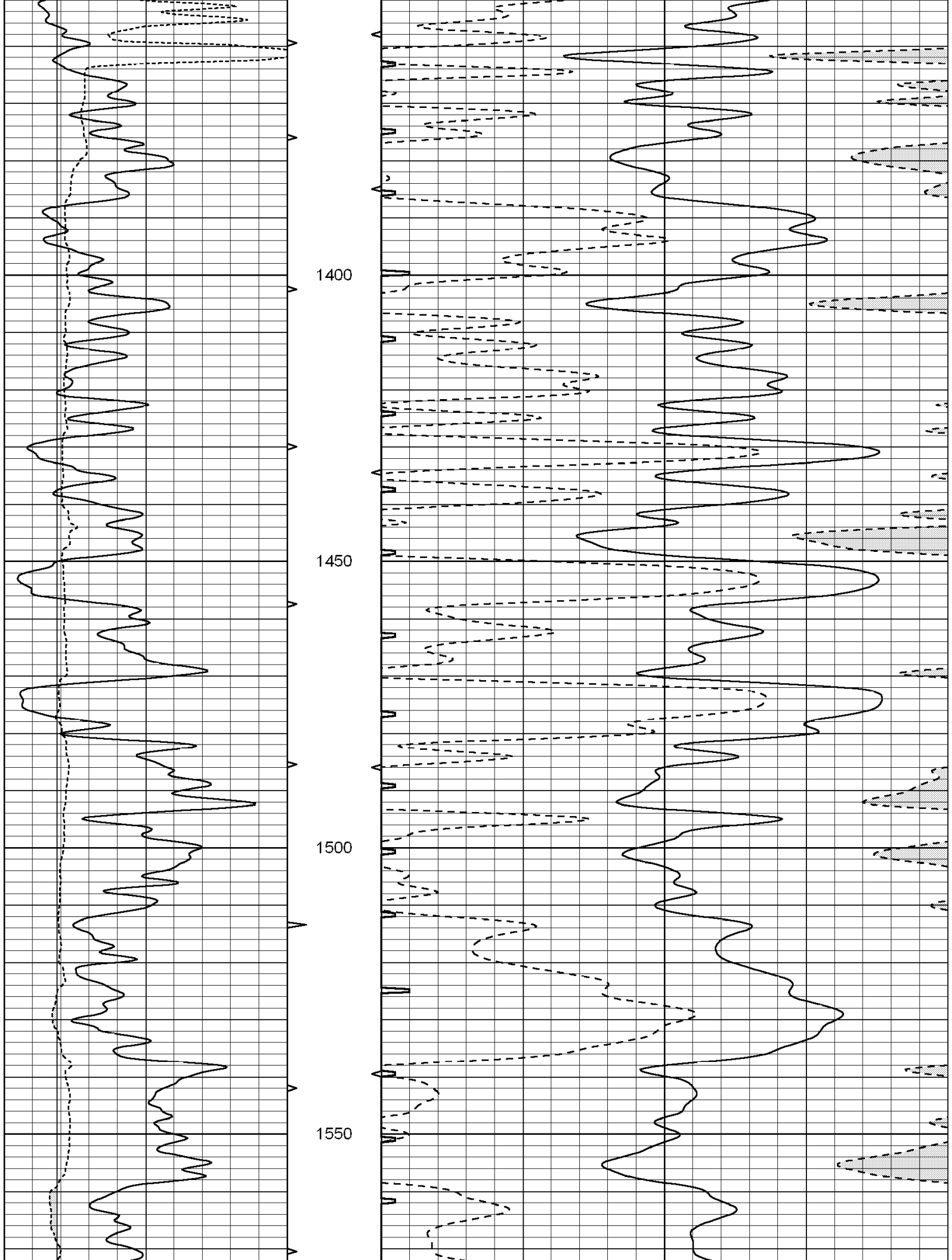


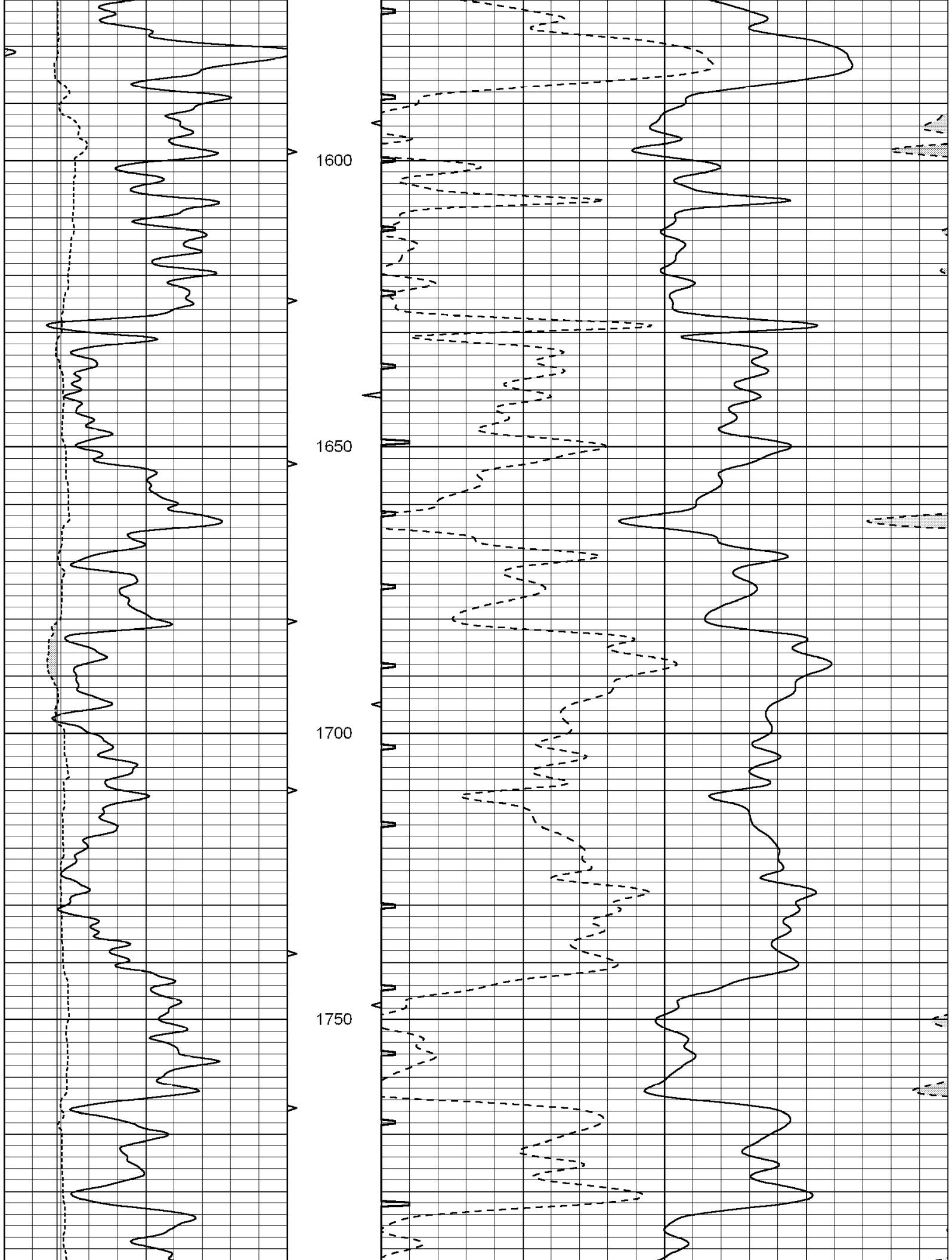


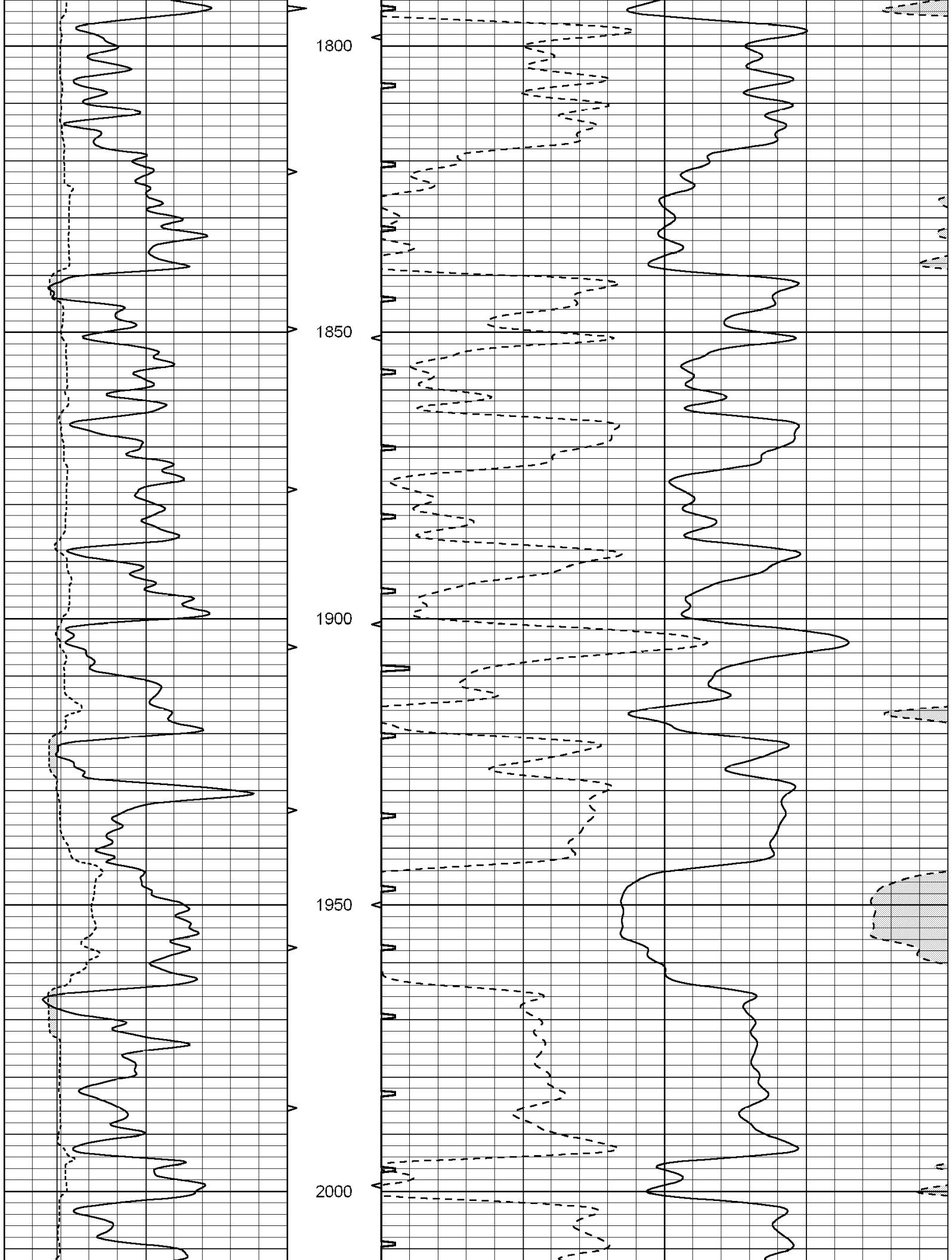


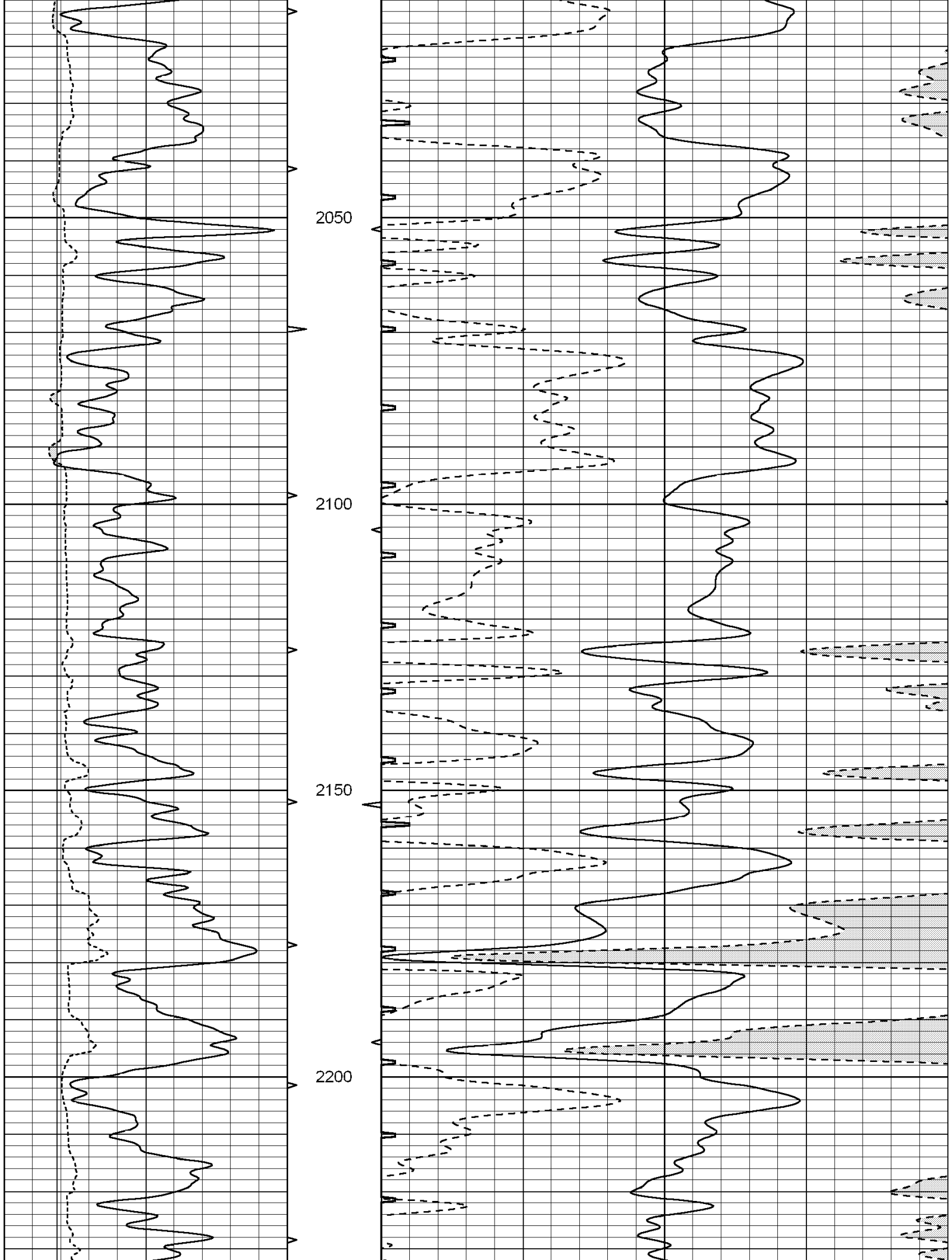


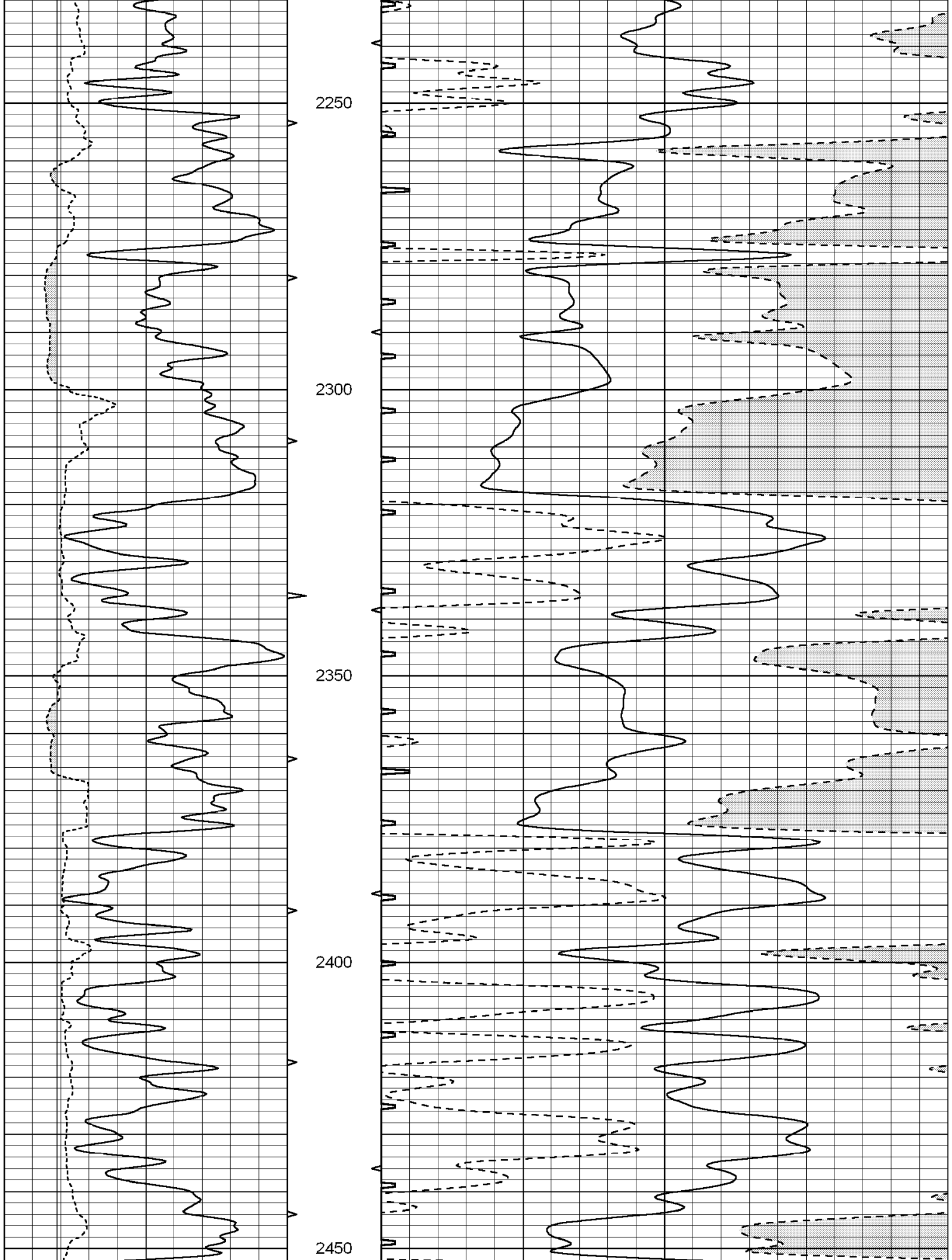


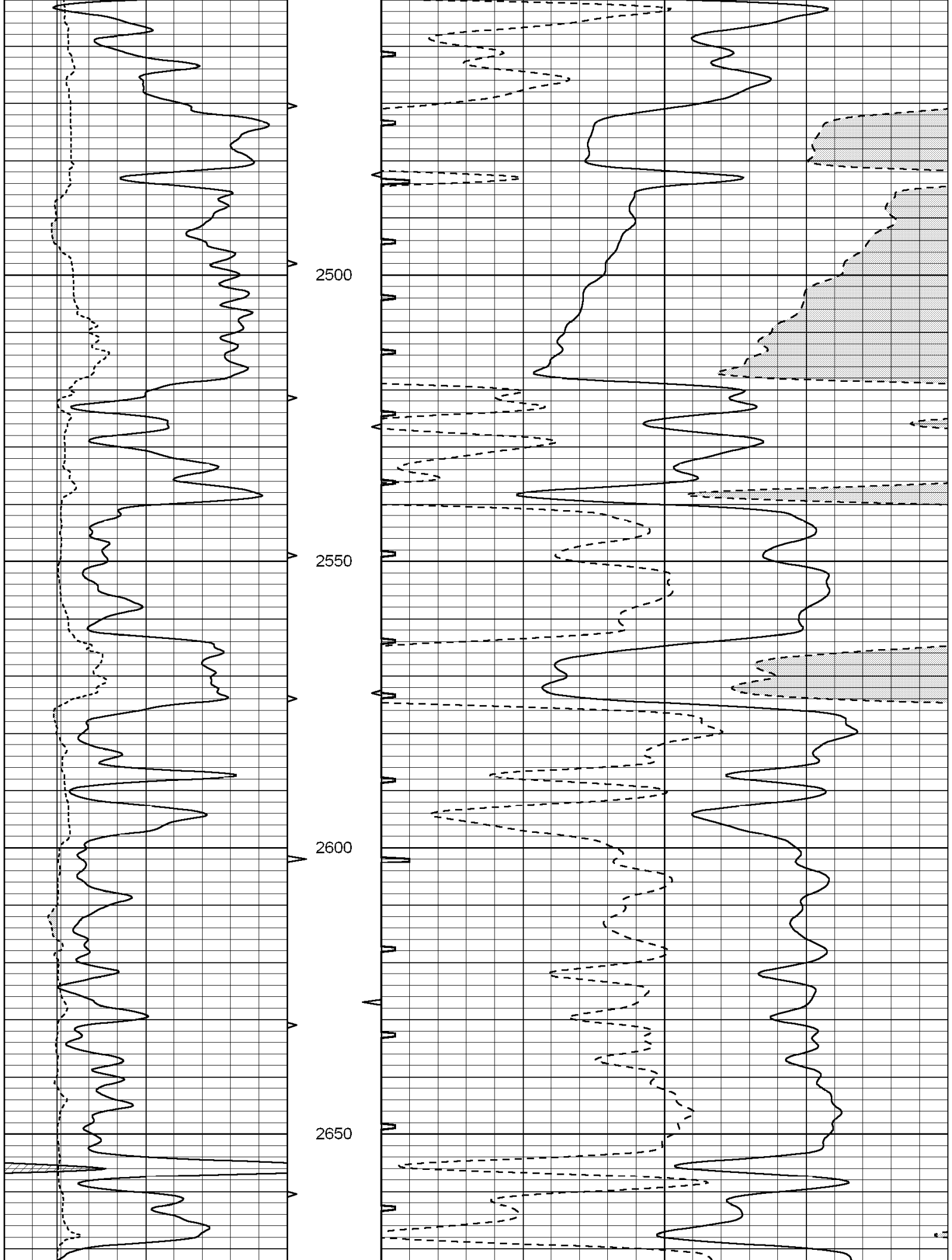


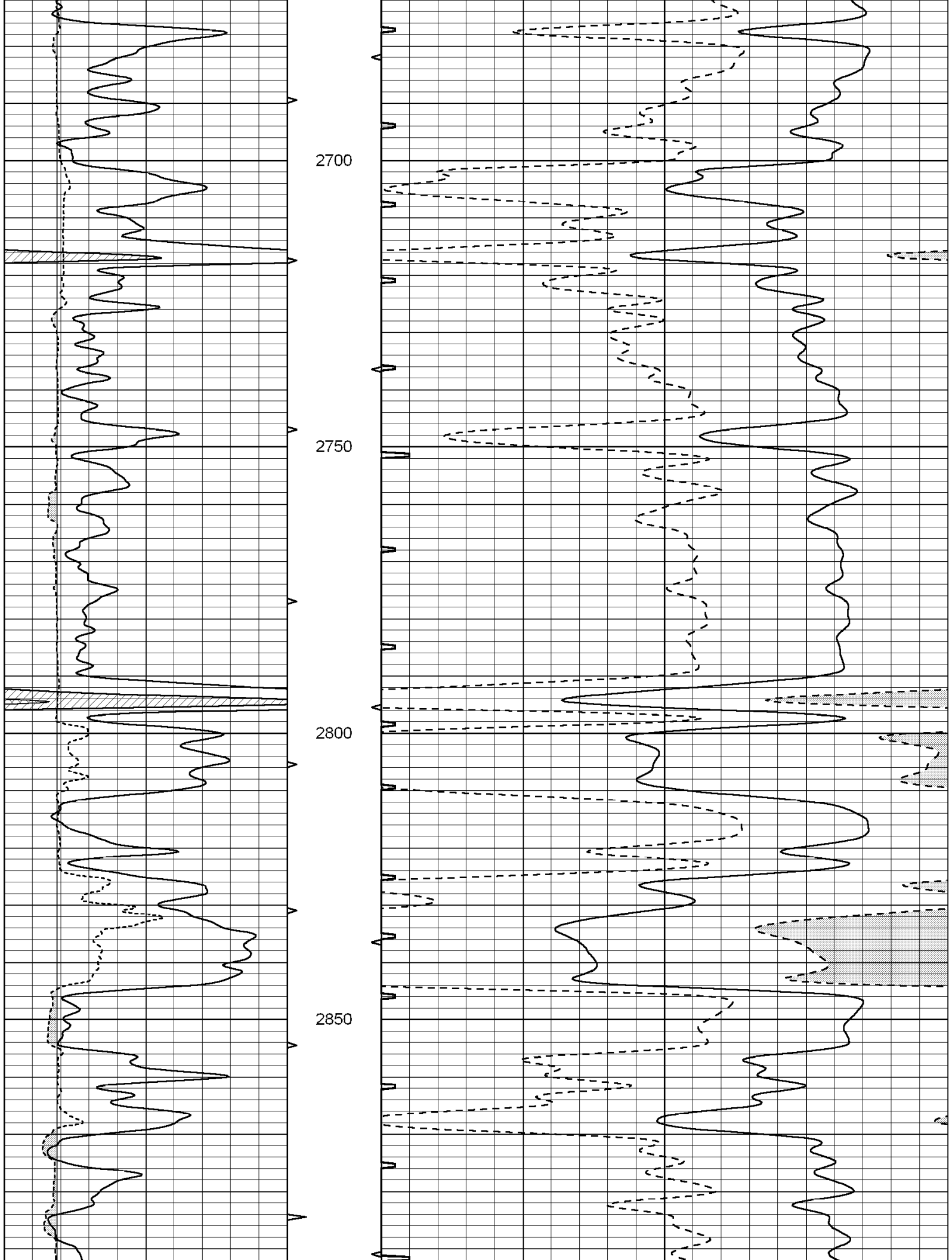


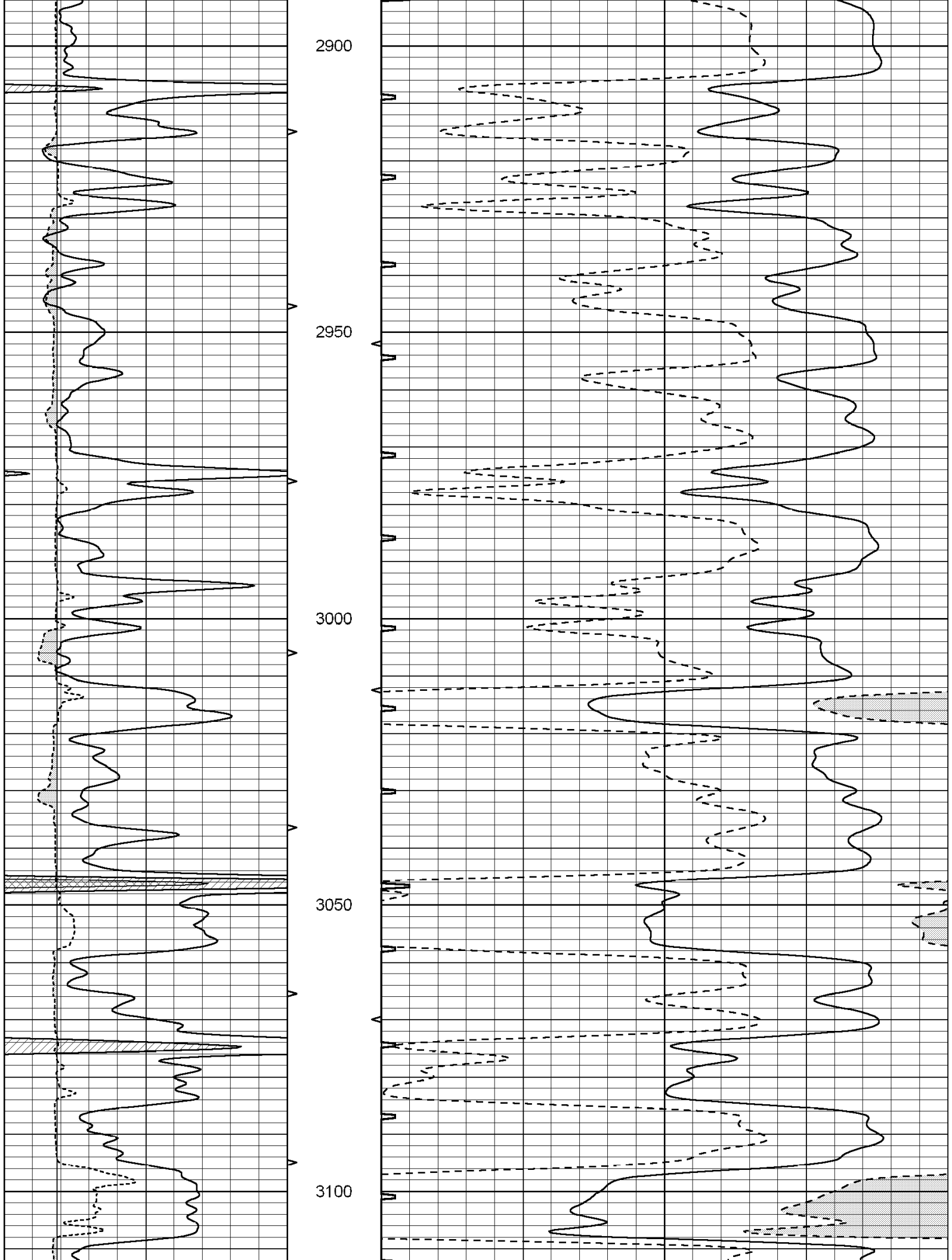


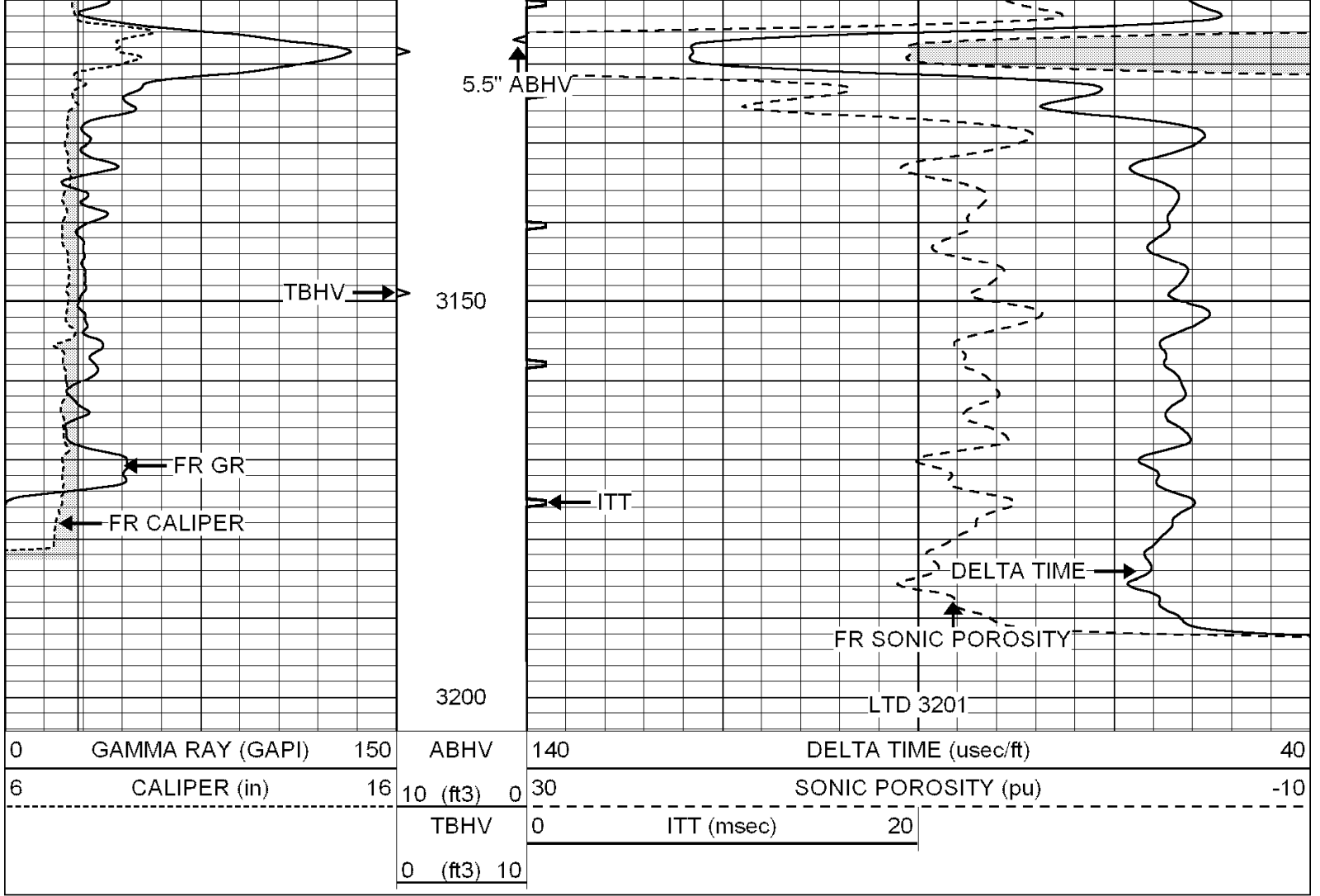












SUPERIOR  
Hays,  
Kansas

# REPEAT SECTION

Database File: 004352ddn.db  
 Dataset Pathname: pass5.5  
 Presentation Format: slt  
 Dataset Creation: Tue Sep 29 15:10:36 2009  
 Charted by: Depth in Feet scaled 1:240

