



SUPERIOR
Hays,
Kansas

MICRO
LOG

Company: BUFFALO RESOURCES, LLC.
Well: NEY #2-23
Field: ELASSER
County: RUSSELL
State: KANSAS

Company: BUFFALO RESOURCES, LLC.
Well: NEY #2-23
Field: ELASSER
County: RUSSELL
State: KANSAS

Location: 335' FNL & 1490' FEL, NE/4
API #: 15-167-23597-0000
SEC 23 TWP 12S RGE 15W
Permanent Datum: GROUND LEVEL
Log Measured From: KELLY BUSHING 8' A.G.L.
Drilling Measured From: KELLY BUSHING
Elevation: 1681
Other Services: CDL/CNL, DIL/SONIC
K.B.: 1689
D.F.: 1687
G.L.: 1681

Date	9/29/09
Run Number	TWO
Depth Driller	3200
Depth Logger	3201
Bottom Logged Interval	3178
Top Log Interval	2500
Casing Driller	8 5/8"@355'
Casing Logger	350
Bit Size	7 7/8
Type Fluid In Hole	CHEMICAL MUD
Density / Viscosity	9.2/52
pH / Fluid Loss	8.4/8.8
Source of Sample	FLOWLINE
Rm @ Meas. Temp	.520@82F
Rmf @ Meas. Temp	.390@82F
Rmc @ Meas. Temp	.624@82F
Source of Rmf / Rmc	MEASUREMENT
Rm @ BHT	.391@109F
Time Circulation Stopped	3.5 HOURS
Time Logger on Bottom	12:15 P.M.
Maximum Recorded Temperature	109F
Equipment Number	0836
Location	HAYS, KANSAS
Recorded By	JEFF LUEBBERS
Witnessed By	CURTIS COVEY
	DARON PATTERSON

<<< Fold Here >>>

All interpretations are opinions based on inferences from electrical or other measurements and we cannot and do not guarantee the accuracy or correctness of any interpretation, and we shall not, except in the case of gross or willful negligence on our part, be liable or responsible for any loss, costs, damages, or expenses incurred or sustained by anyone resulting from any interpretation made by any of our officers, agents or employees. These interpretations are also subject to our general terms and conditions set out in our current Price Schedule.

Comments

THANK YOU FOR USING SUPERIOR WELL SERVICE HAYS, KANSAS (785) 628-6395
DIRECTIONS
RUSSELL, KS. & I-70, 9N. ON HWY 281 TO MELLARD RD., 3W., 1/2N., 2 1/4W. TO STOP SIGN, JOG S. W. INTO GATE

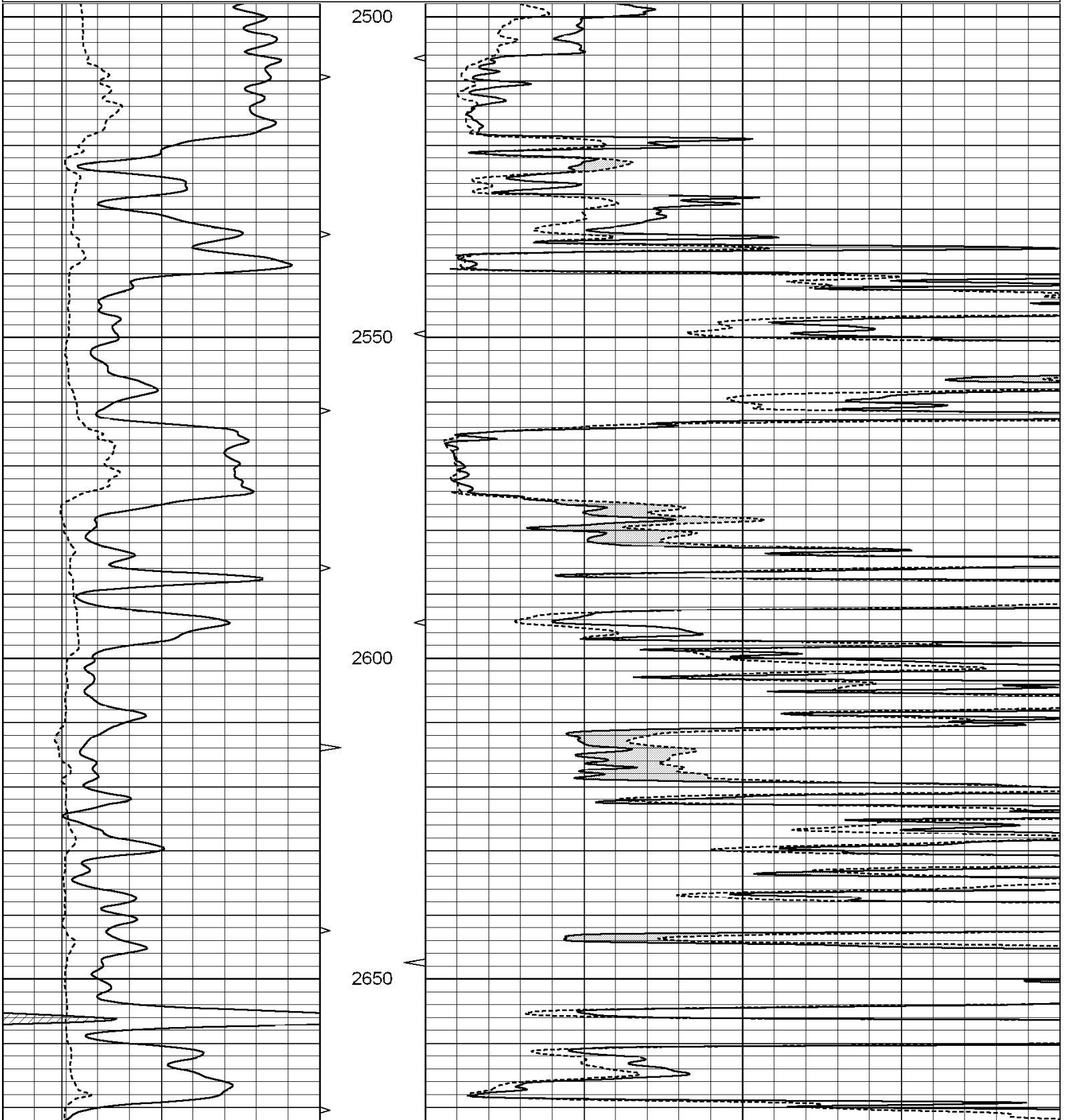


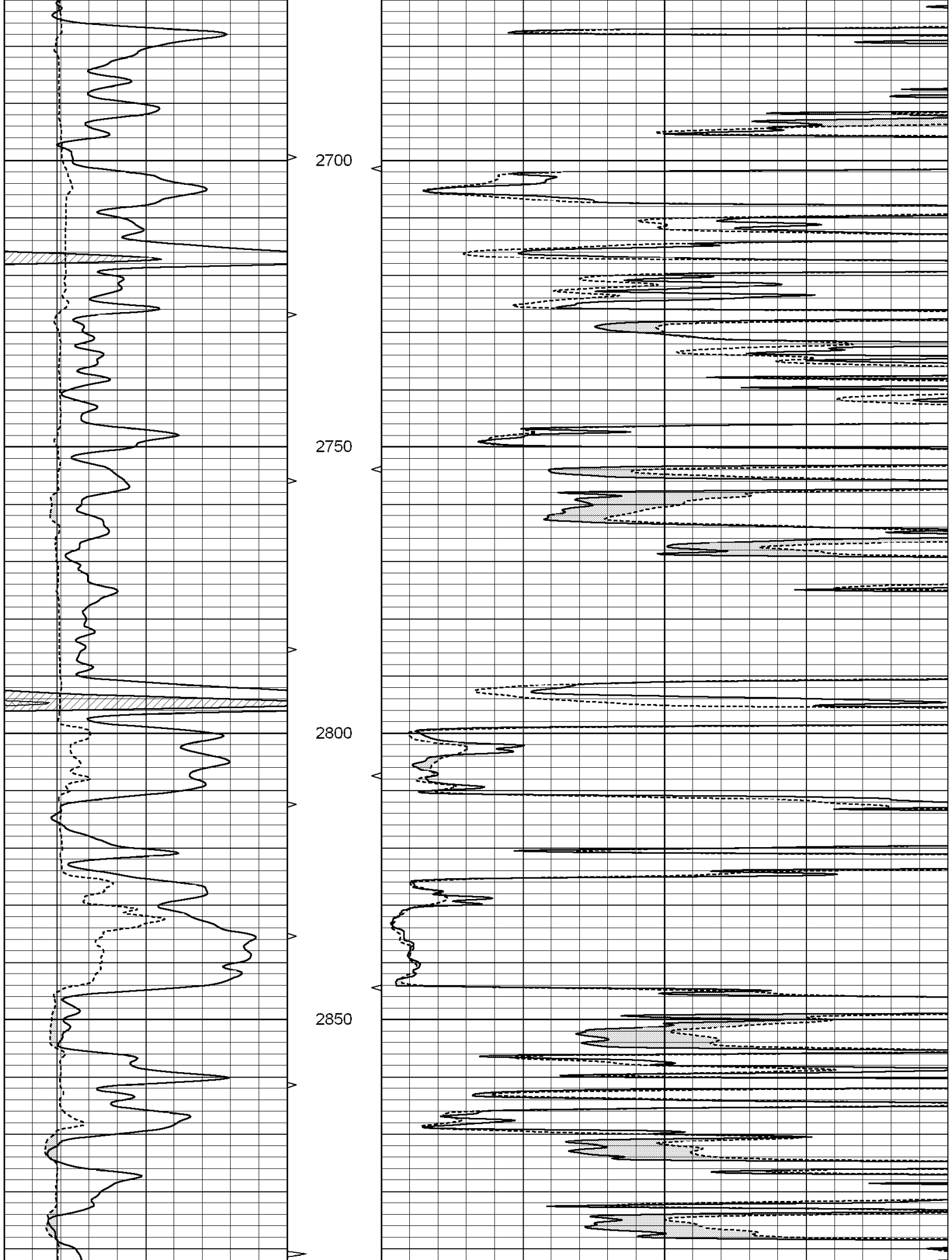
SUPERIOR
Hays,
Kansas

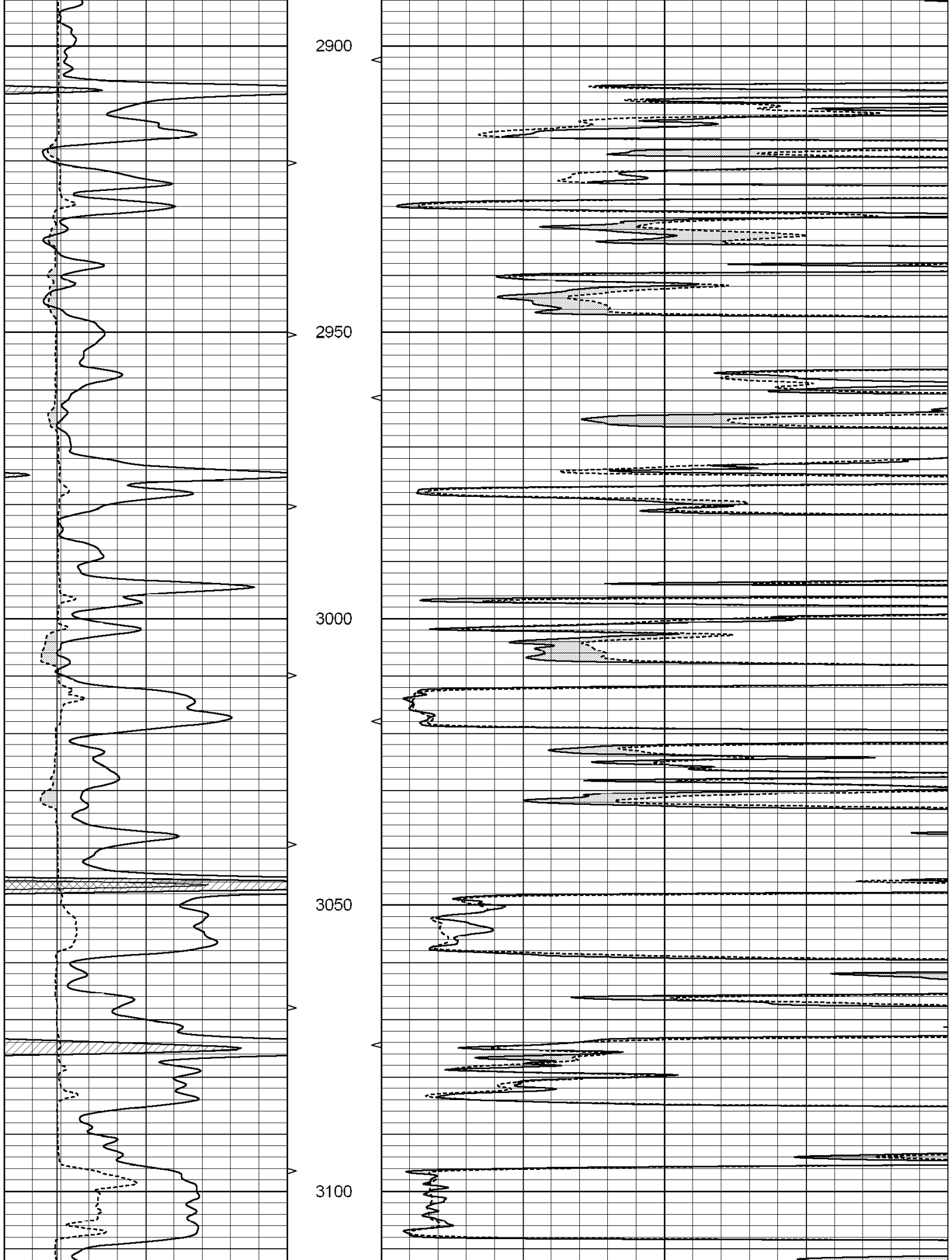
MAIN SECTION

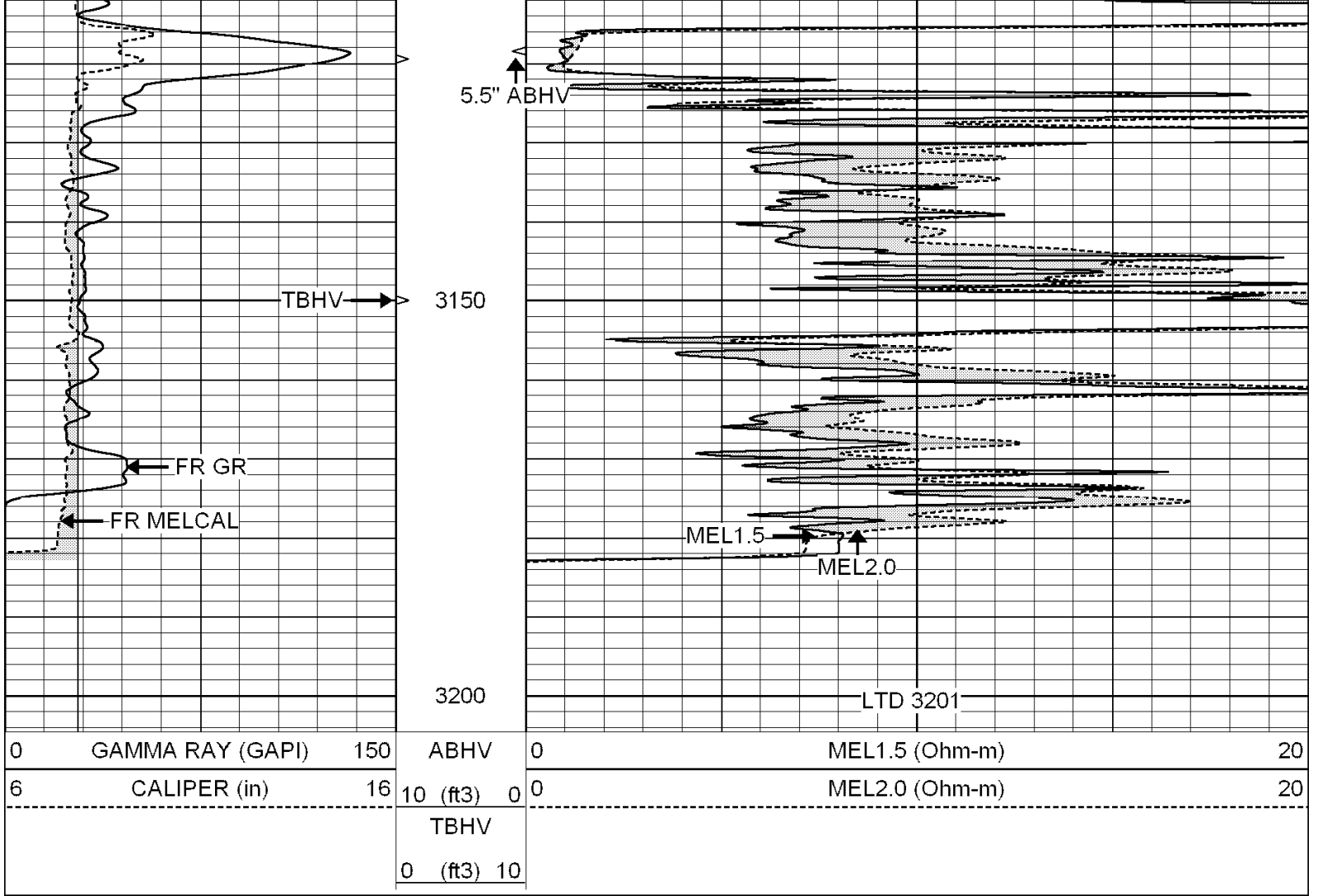
Database File: 004352ddn.db
 Dataset Pathname: pass6.7
 Presentation Format: micro
 Dataset Creation: Tue Sep 29 15:16:16 2009
 Charted by: Depth in Feet scaled 1:240

0	GAMMA RAY (GAPI)	150	ABHV	0	MEL1.5 (Ohm-m)	20
6	CALIPER (in)	16	10 (ft3)	0	MEL2.0 (Ohm-m)	20
			TBHV			
			0 (ft3)	10		







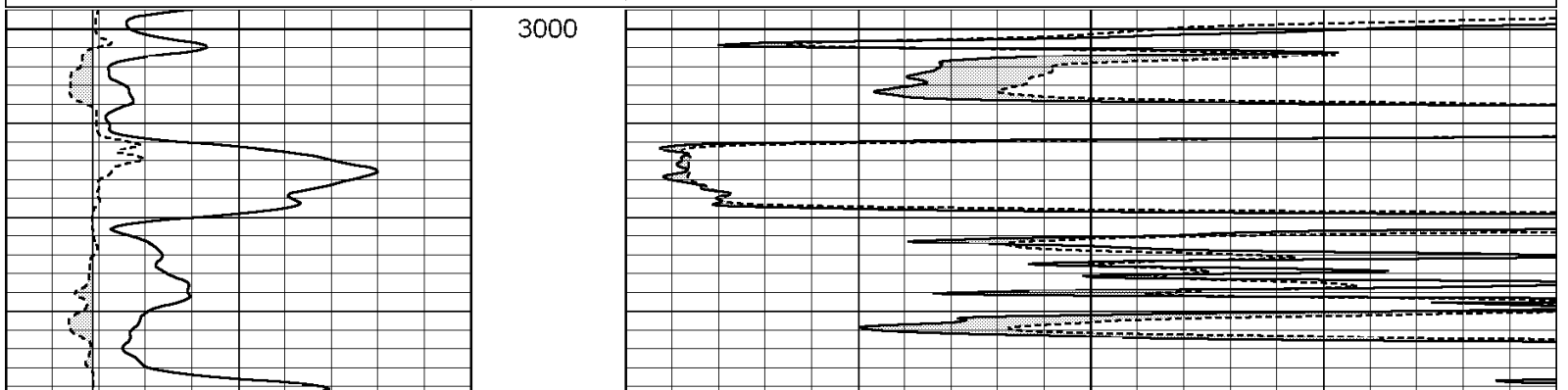


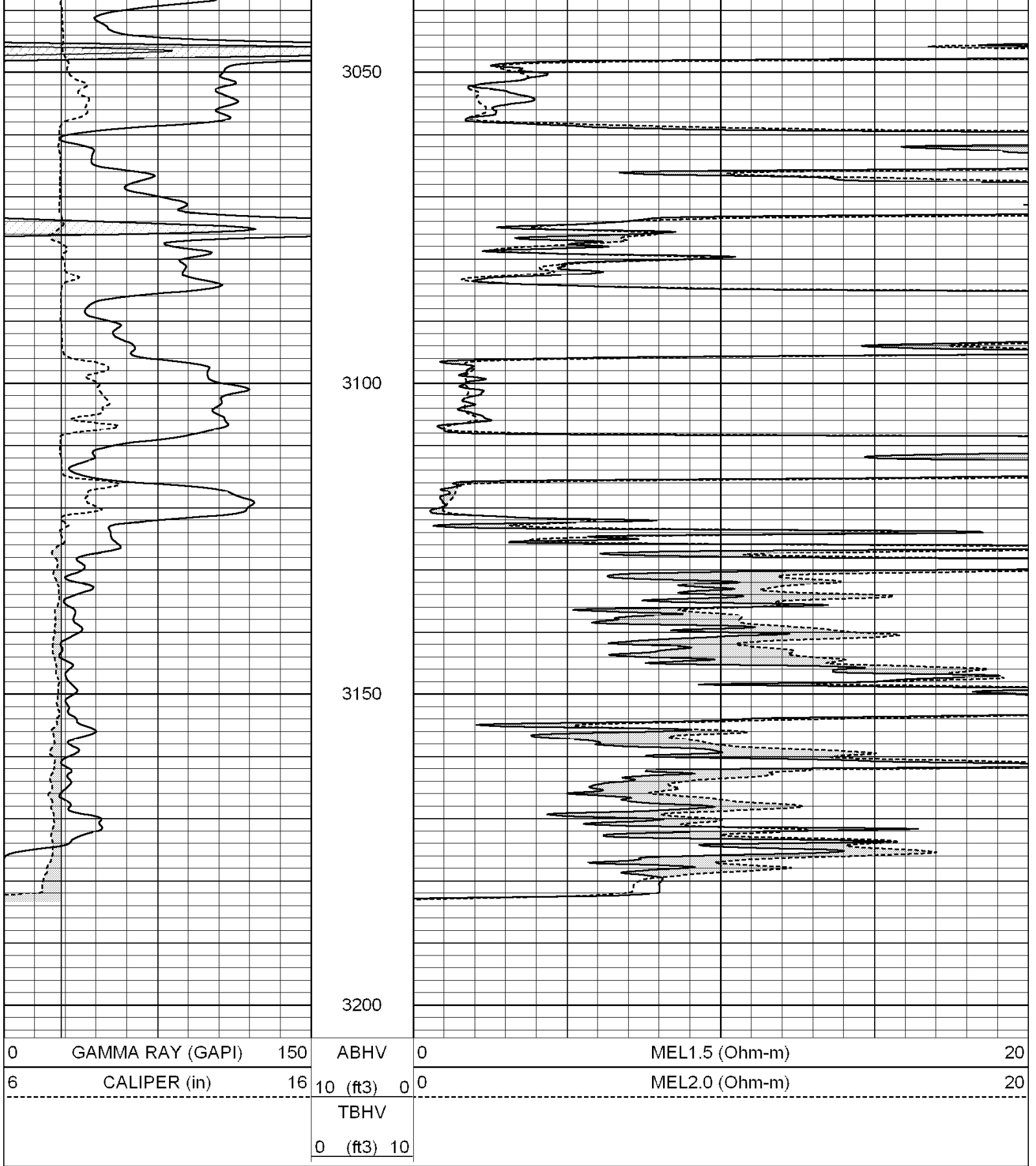
SUPERIOR
Hays,
Kansas

REPEAT SECTION

Database File: 004352ddn.db
 Dataset Pathname: pass5.5
 Presentation Format: micro
 Dataset Creation: Tue Sep 29 15:10:36 2009
 Charted by: Depth in Feet scaled 1:240

0	GAMMA RAY (GAPI)	150	ABHV	0	MEL1.5 (Ohm-m)	20
6	CALIPER (in)	16	10 (ft3) 0	0	MEL2.0 (Ohm-m)	20
			TBHV			
			0 (ft3) 10			





Calibration Report

Database File: 004352ddn.db
 Dataset Pathname: pass6.7
 Dataset Creation: Tue Sep 29 15:16:16 2009

MICRO Calibration Report

Serial Number: 2

Tool Model: PROBE
Performed: Mon Sep 14 01:57:45 2009

Caliper Calibration:	Gain=6.672	Offset=-0.199
References	Low Cal	High Cal
Readings	6.400	15.000
	0.989	2.278

1.5" Calibration:	Gain=32.000	Offset=-1.500
References	Low Cal	High Cal
Readings	0.000	20.000
	0.060	1.186

2" Calibration:	Gain=42.000	Offset=-1.700
References	Low Cal	High Cal
Readings	0.000	20.000
	0.011	0.926

Gamma Ray Calibration Report

Serial Number: GR3
Tool Model: OPEN
Performed: Tue Sep 29 14:26:43 2009

Calibrator Value: 200.0 GAPI

Background Reading: 3.0 cps
Calibrator Reading: 186.0 cps

Sensitivity: 0.8000 GAPI/cps