



Microresistivity Log

DIGITAL LOG (785) 625-3858

API No. 15-033-21,563-00-00	Company Murfin Drilling Company, Inc.	
	Well Neoma 'A' No. 1-17	
	Field Wildcat	
	County Comanche	State Kansas
Location 2310' FSL & 2310' FEL	Other Services CNL/CDL DIL/BHCS	
Sec: 17	Twp: 33S	Rge: 20W
Permanent Datum Ground Level	Kelly Bushing	Elevation 1828
Log Measured From	Front Kelly Bushing	11 Ft. Above Perm. Datum
Drilling Measured		K.B. 1839 D.F. 1828 G.L. 1828

Date	09/09/2009
Run Number	Two
Depth Driller	5320
Depth Logger	5326
Bottom Logged Interval	5325
Top Log Interval	4000
Casing Driller	8.625 @ 614
Casing Logger	614
Bit Size	7.875
Type Fluid in Hole	Chemical
Salinity, ppm CL	4.500
Density / Viscosity	9.3 56
pH / Fluid Loss	11.0 6.0
Source of Sample	Flowline
Rm @ Meas. Temp	.8 @ 75
Rmf @ Meas. Temp	.60 @ 75
Rmc @ Meas. Temp	1.08 @ 75
Source of Rmf / Rmc	Charts
Rm @ BHT	.46 @ 131
Operating Rig Time	5 1/2 Hours
Max Rec. Temp. F	131
Equipment Number	17
Location	Hays
Recorded By	Mike Garrison
Witnessed By	Rocky Milford

<<< Fold Here >>>

All interpretations are opinions based on inferences from electrical or other measurements and we cannot and do not guarantee the accuracy or correctness of any interpretation, and we shall not, except in the case of gross or willful negligence on our part, be liable or responsible for any loss, costs, damages, or expenses incurred or sustained by anyone resulting from any interpretation made by any of our officers, agents or employees. These interpretations are also subject to our general terms and conditions set out in our current Price Schedule.

Comments

Thank you for using Log-Tech, Inc.
(785) 625-3858

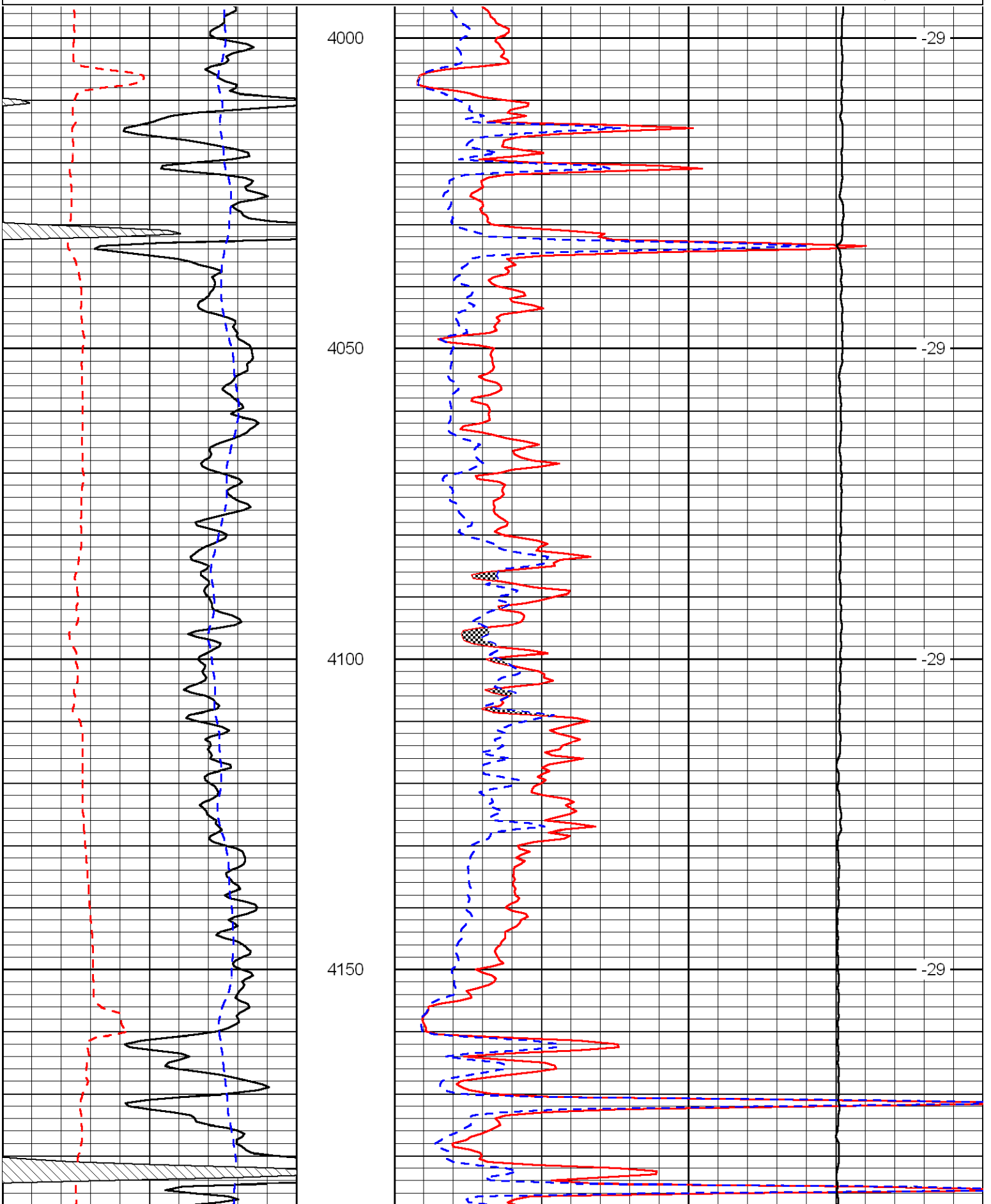
Protection, 2 1/2 West to 2 Rd, 2 South, 1/2 West, South Into

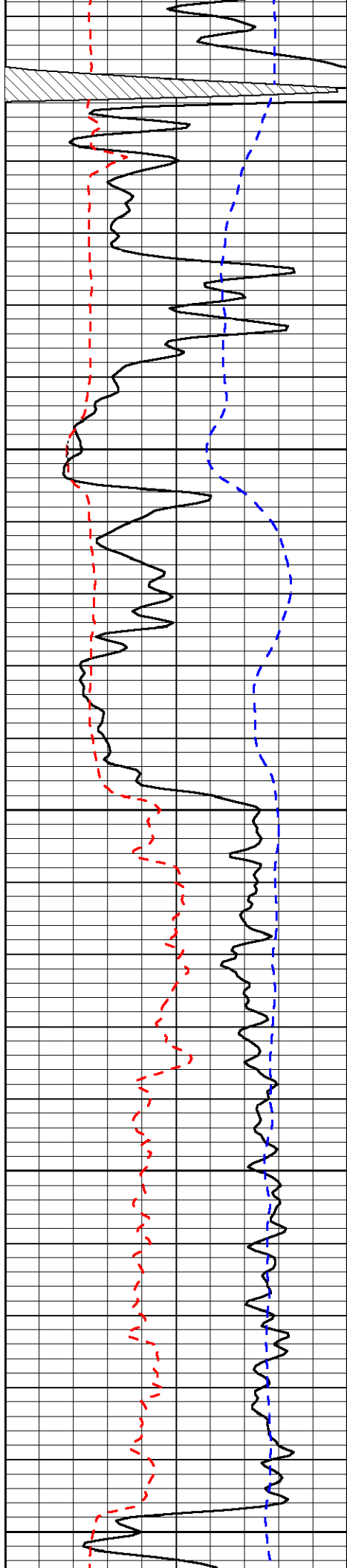
Database File: c:\warrior\data\murfin_neoma 'a' #1-17\murf.db
 Dataset Pathname: dil/mfnstk
 Presentation Format: micro
 Dataset Creation: Wed Sep 09 16:14:07 2009
 Charted by: Depth in Feet scaled 1:240

0	Gamma Ray	150
6	Micro Log Caliper (in)	16
-200	SP (MV)	0

0	Micro Inverse 1 X 1 (Ohm-m)	40
0	Micro Normal 2" (Ohm-m)	40
10000	Line Weight (lb)	0

LSPD
(ft/min)





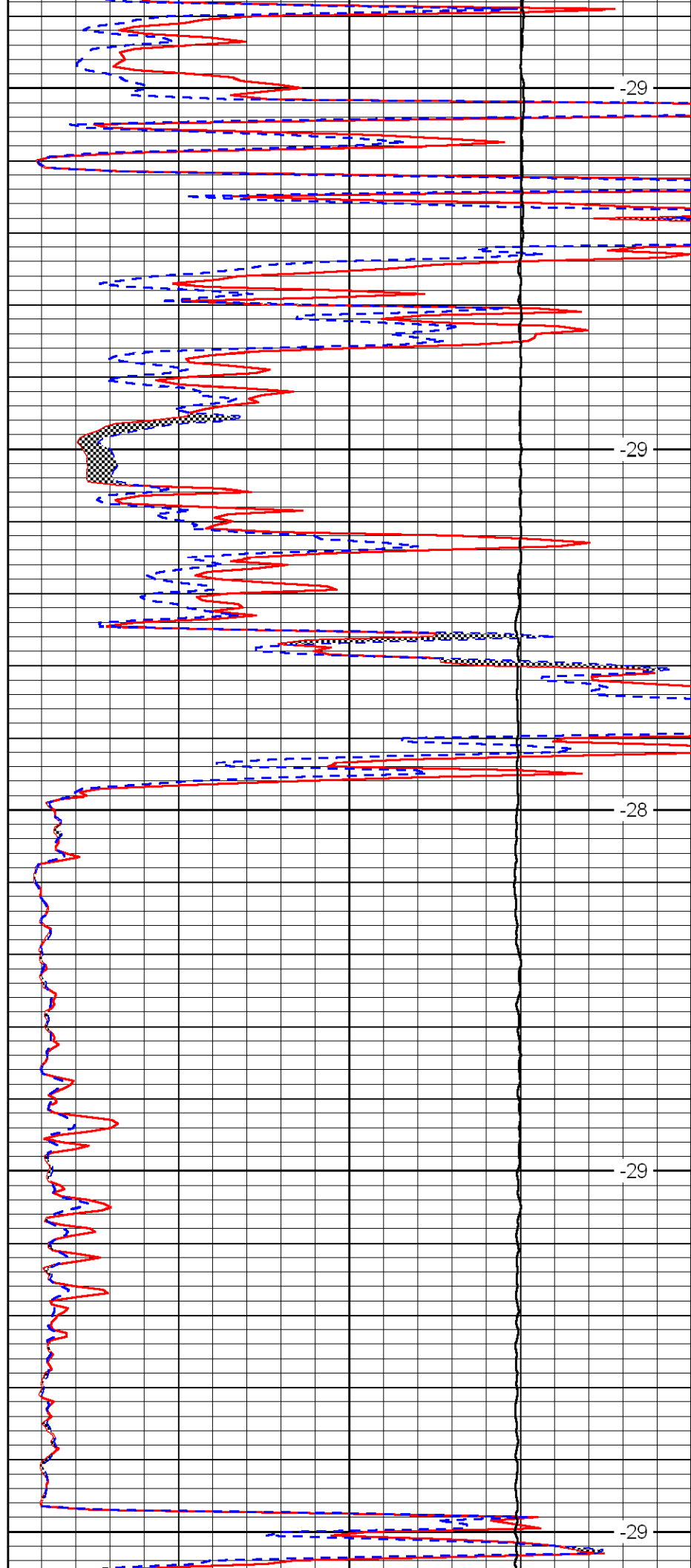
4200

4250

4300

4350

4400



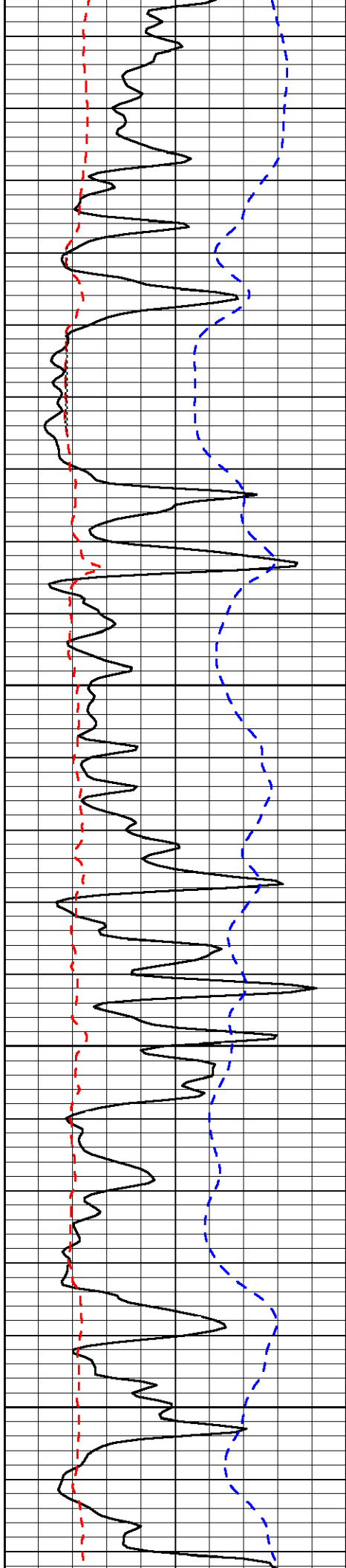
-29

-29

-28

-29

-29

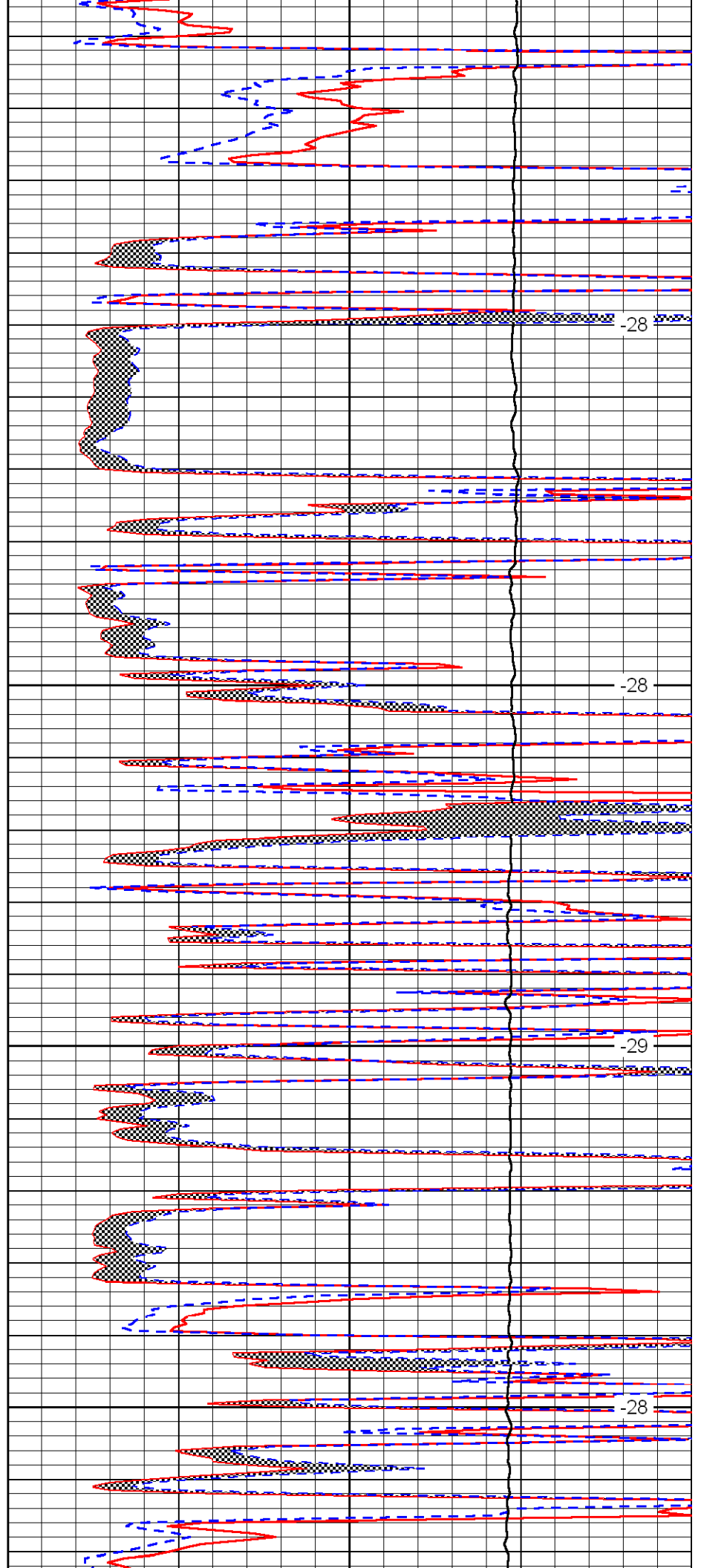


4450

4500

4550

4600

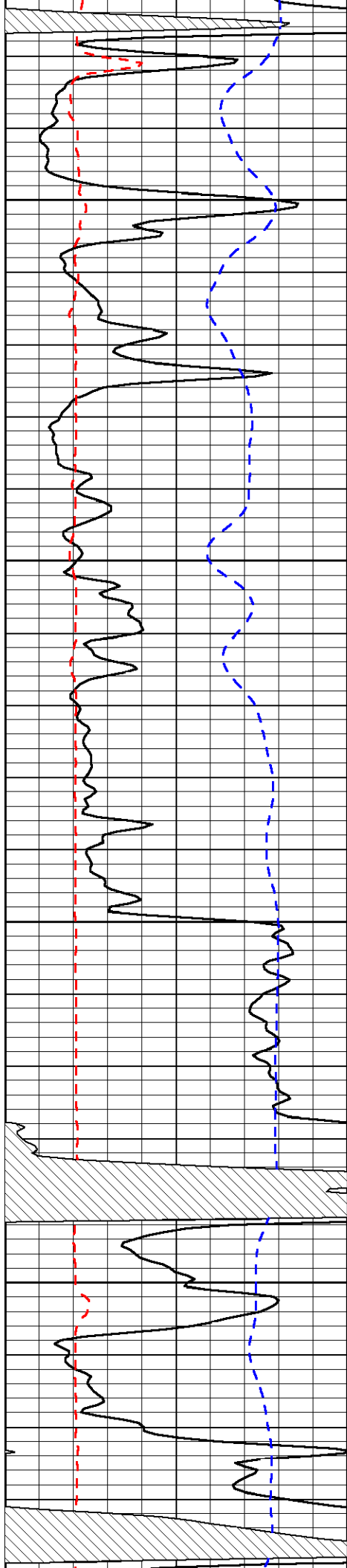


-28

-28

-29

-28

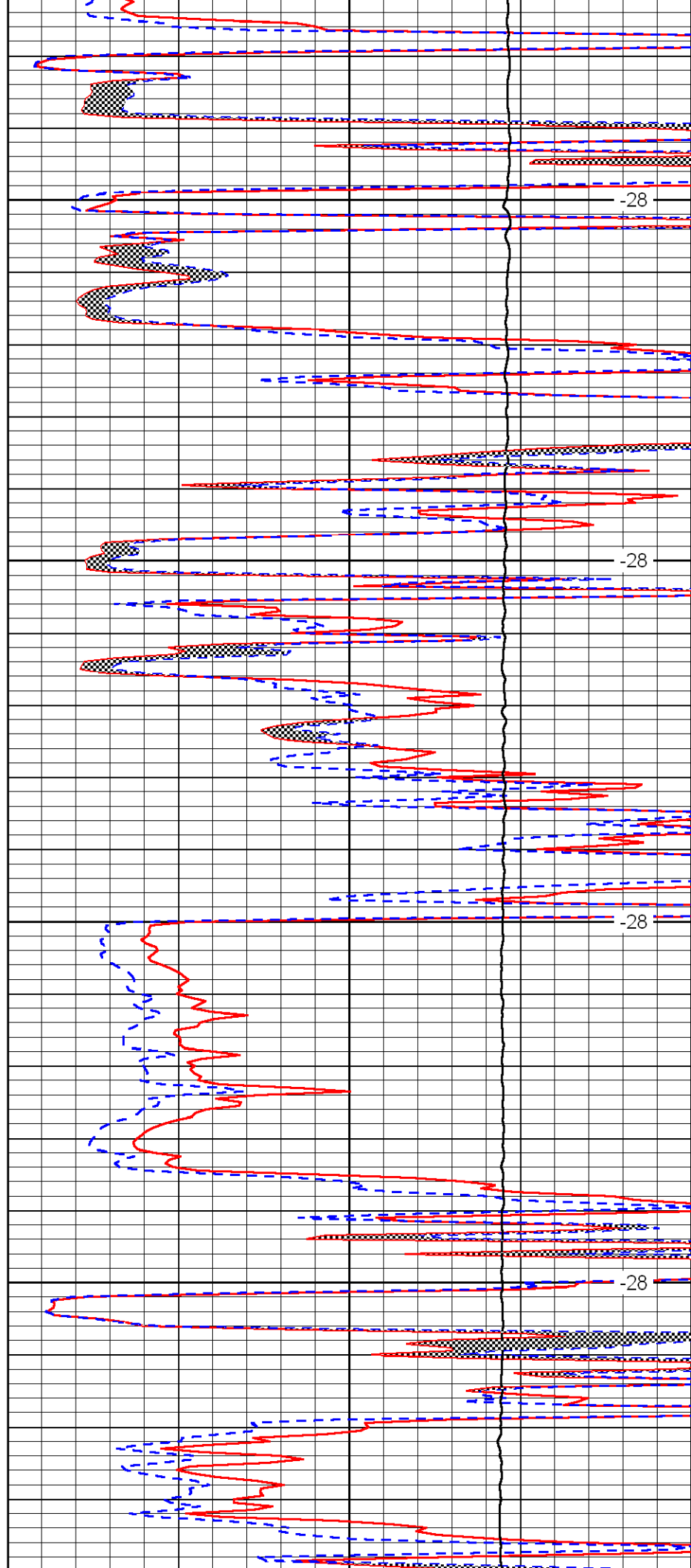


4650

4700

4750

4800

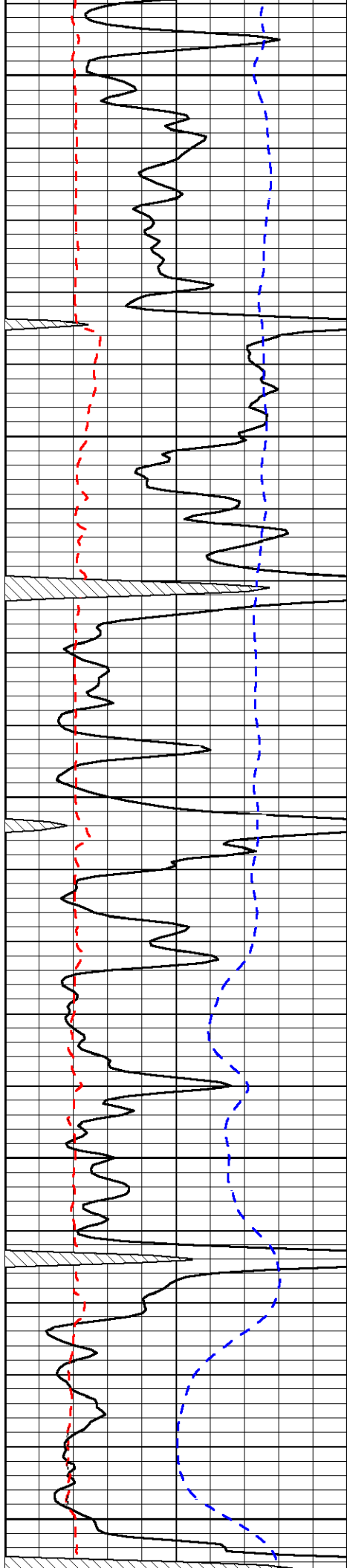


-28

-28

-28

-28



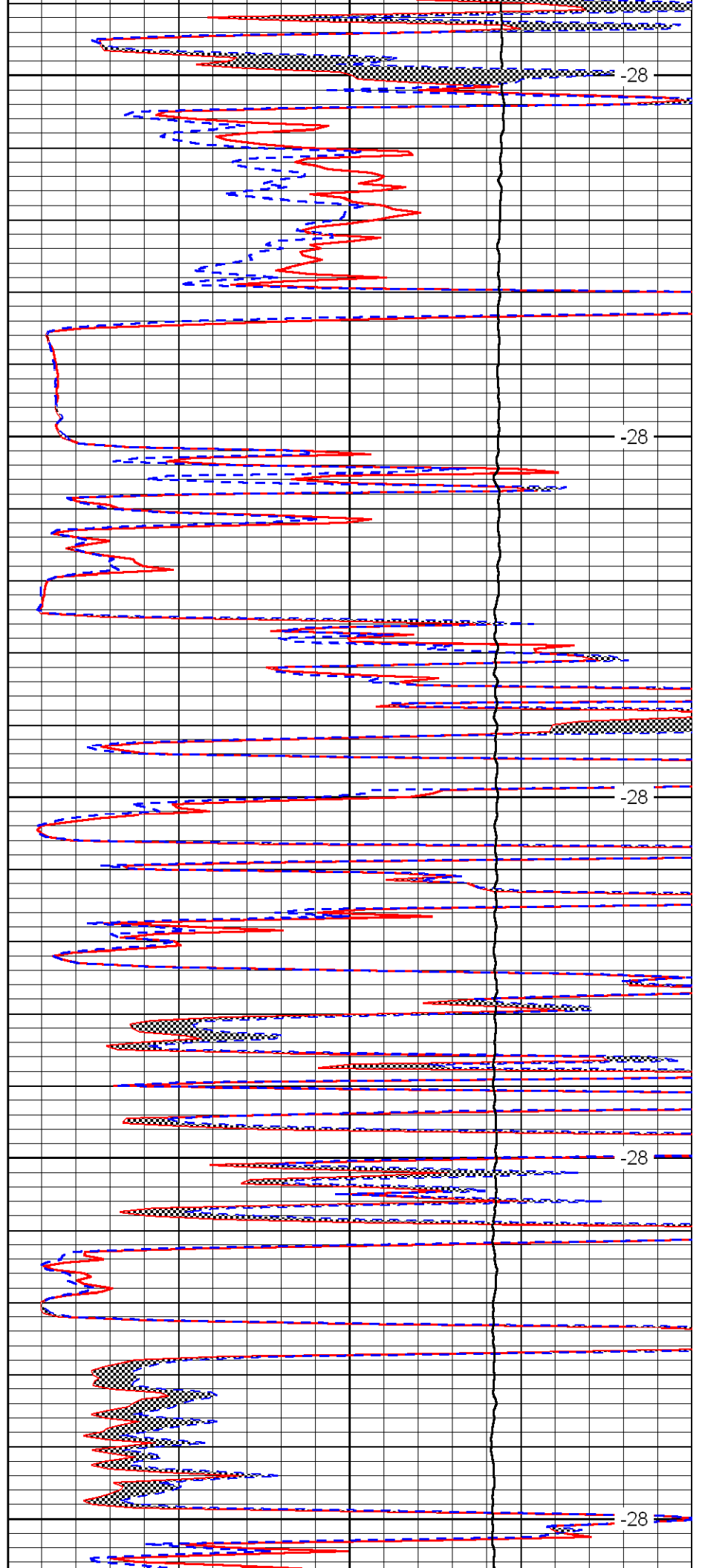
4850

4900

4950

5000

5050



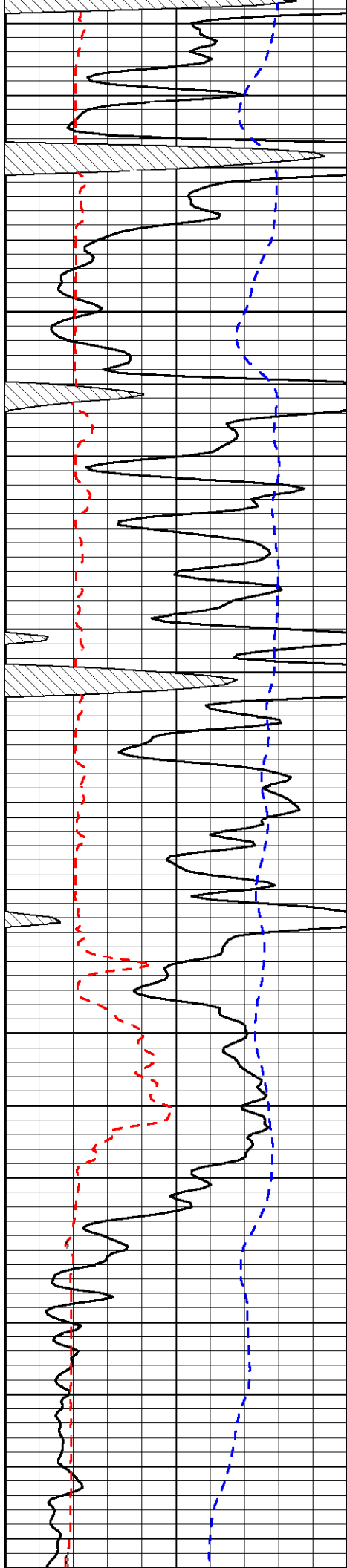
-28

-28

-28

-28

-28

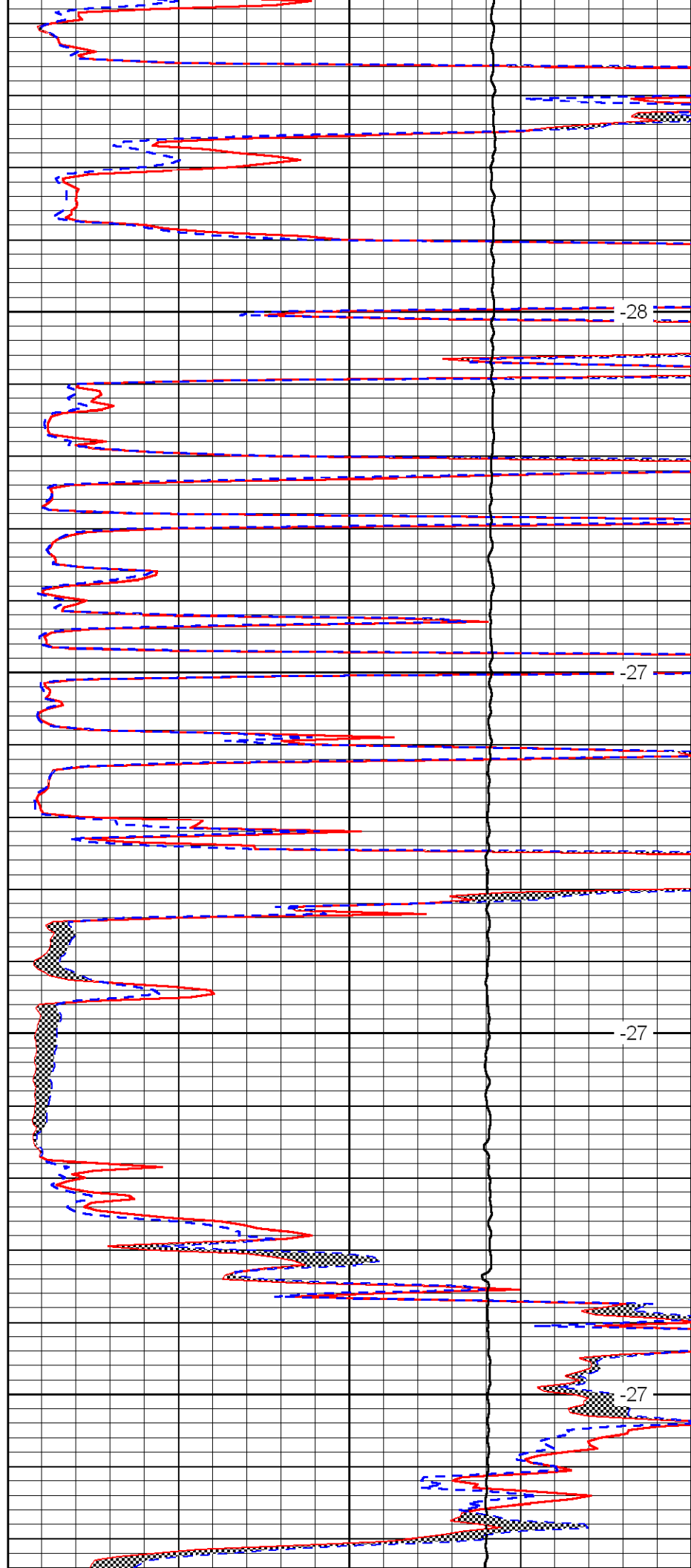


5100

5150

5200

5250

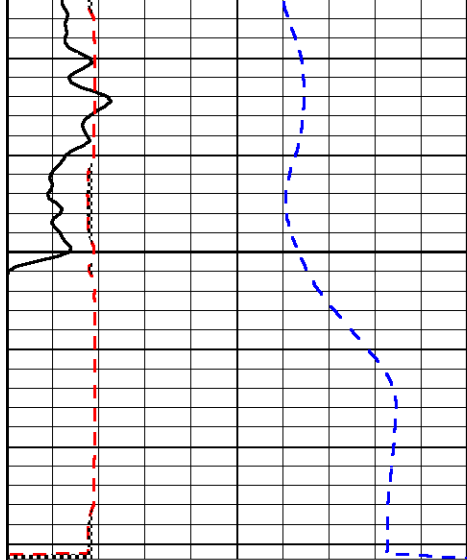


-28

-27

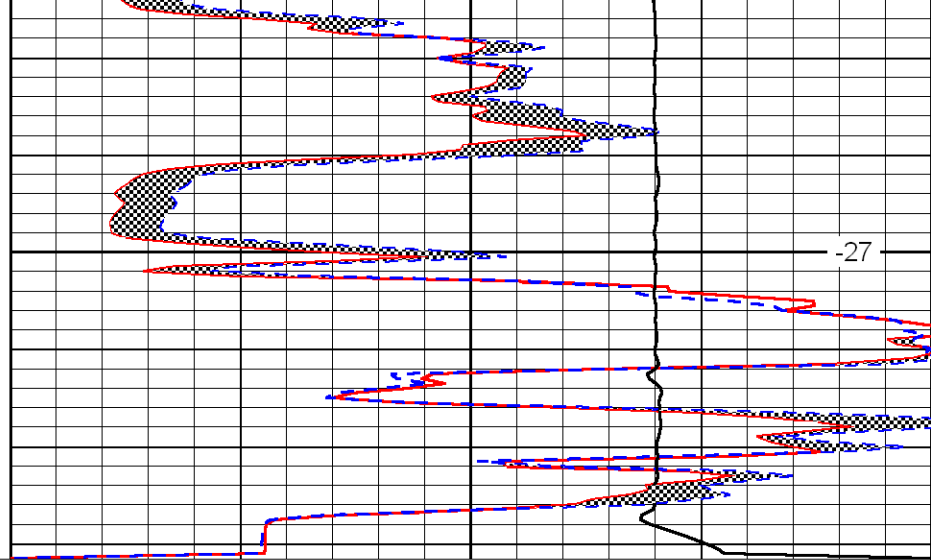
-27

-27



0	Gamma Ray	150
6	Micro Log Caliper (in)	16
-200	SP (MV)	0

5300



0	Micro Inverse 1 X 1 (Ohm-m)	40
0	Micro Normal 2' (Ohm-m)	40
10000	Line Weight (lb)	0

LSPD
(ft/min)