



**Borehole Compensated  
Sonic Log**

**DIGITAL LOG (785) 625-3858**

API No. 15-033-21,563-00-00	Company <b>Murfin Drilling Company, Inc.</b>	Location <b>2310' FSL &amp; 2310' FEL</b>	Other Services CNL/CDL MEL/DIL
Well <b>Neoma 'A' No. 1-17</b>	County <b>Comanche</b>		
Field <b>Wildcat</b>	State <b>Kansas</b>		
Sec: <b>17</b>	Twp: <b>33S</b>	Rge: <b>20W</b>	Elevation K.B. 1839 D.F. 1828 G.L. 1828
Permanent Datum Log Measured From Drilling Measured From	Ground Level Kelly Bushing Kelly Bushing	Elevation 1828 11 Ft. Above Perm. Datum	

Date	09/09/2009
Run Number	Two
Type Log	BHC Sonic
Depth Driller	5320
Depth Logger	5326
Bottom Logged Interval	5315
Top Logged Interval	600
Type Fluid In Hole	Chemical
Salinity, PPM CL	4,500
Density	9.3
Level	Full
Max. Rec. Temp. F	131
Operating Rig Time	5 1/2 Hours
Equipment -- Location	17 Hays
Recorded By	Mike Garrison
Witnessed By	Rocky Milford

Run No	Bit	Borehole Record		Casing Record	
		From	To	From	To
1	12.25	00	614	8.625	24#
2	7.875	614	5320		

<<< Fold Here >>>

All interpretations are opinions based on inferences from electrical or other measurements and we cannot and do not guarantee the accuracy or correctness of any interpretation, and we shall not, except in the case of gross or willful negligence on our part, be liable or responsible for any loss, costs, damages, or expenses incurred or sustained by anyone resulting from any interpretation made by any of our officers, agents or employees. These interpretations are also subject to our general terms and conditions set out in our current Price Schedule.

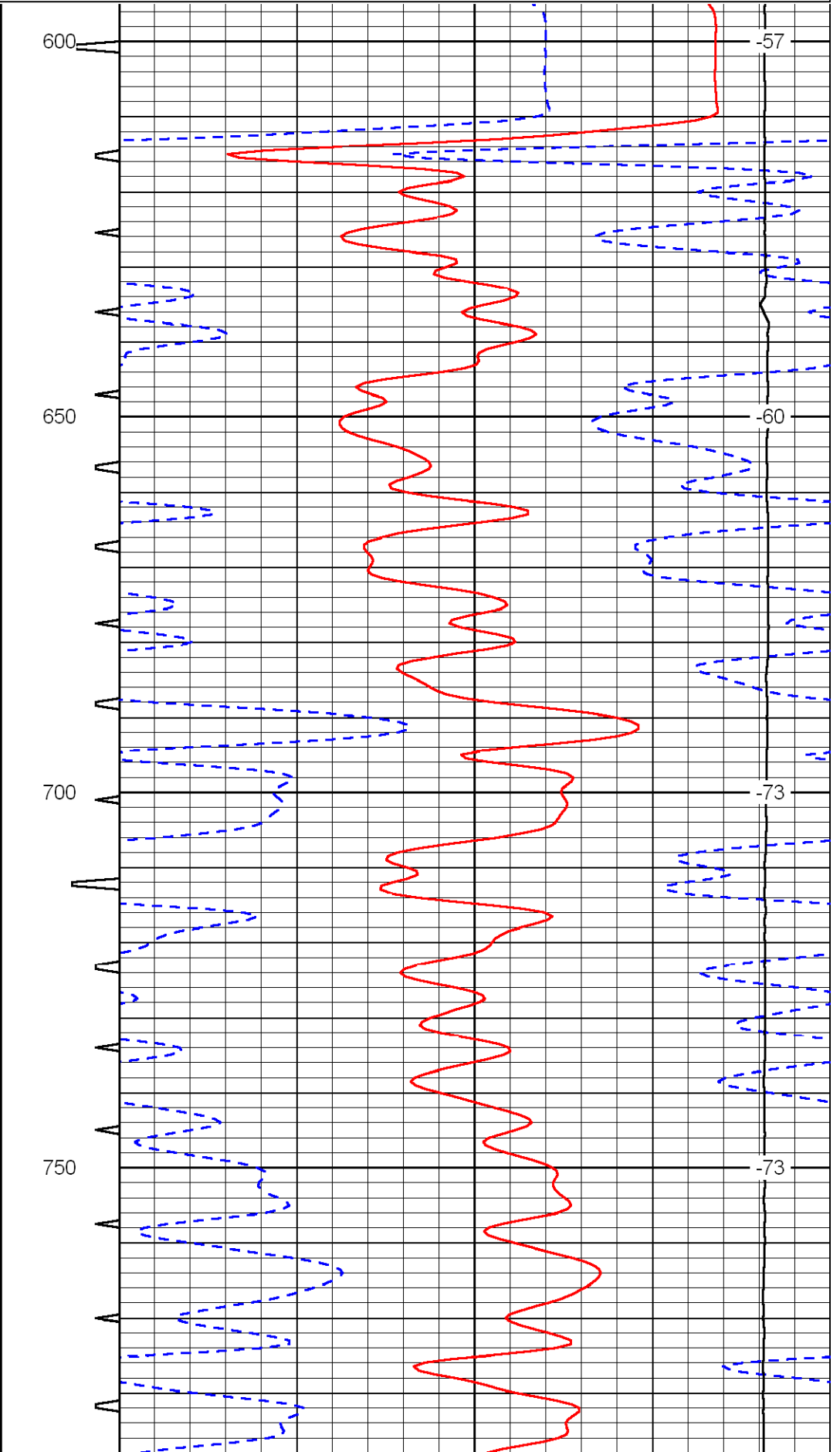
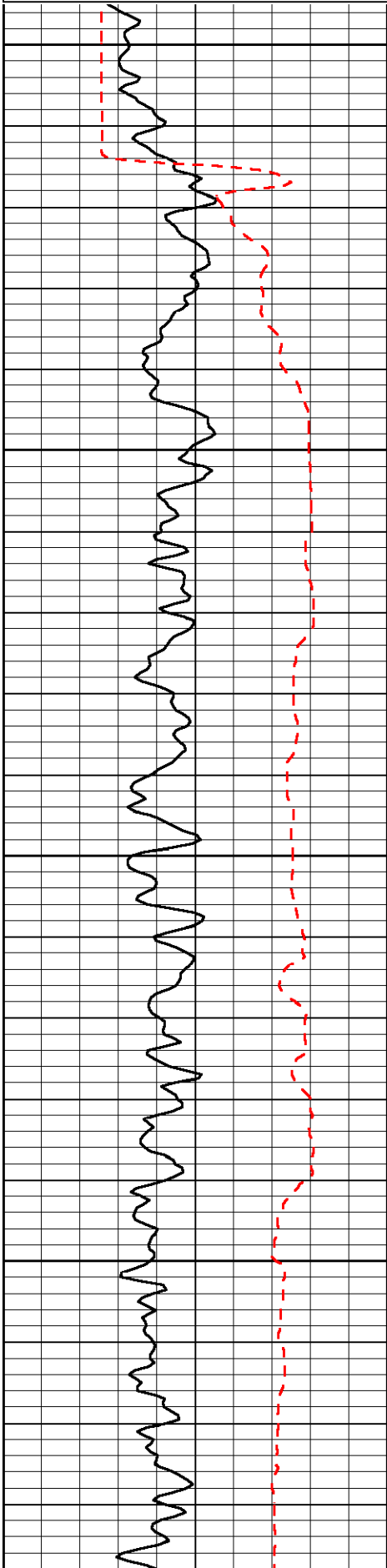
**Comments**

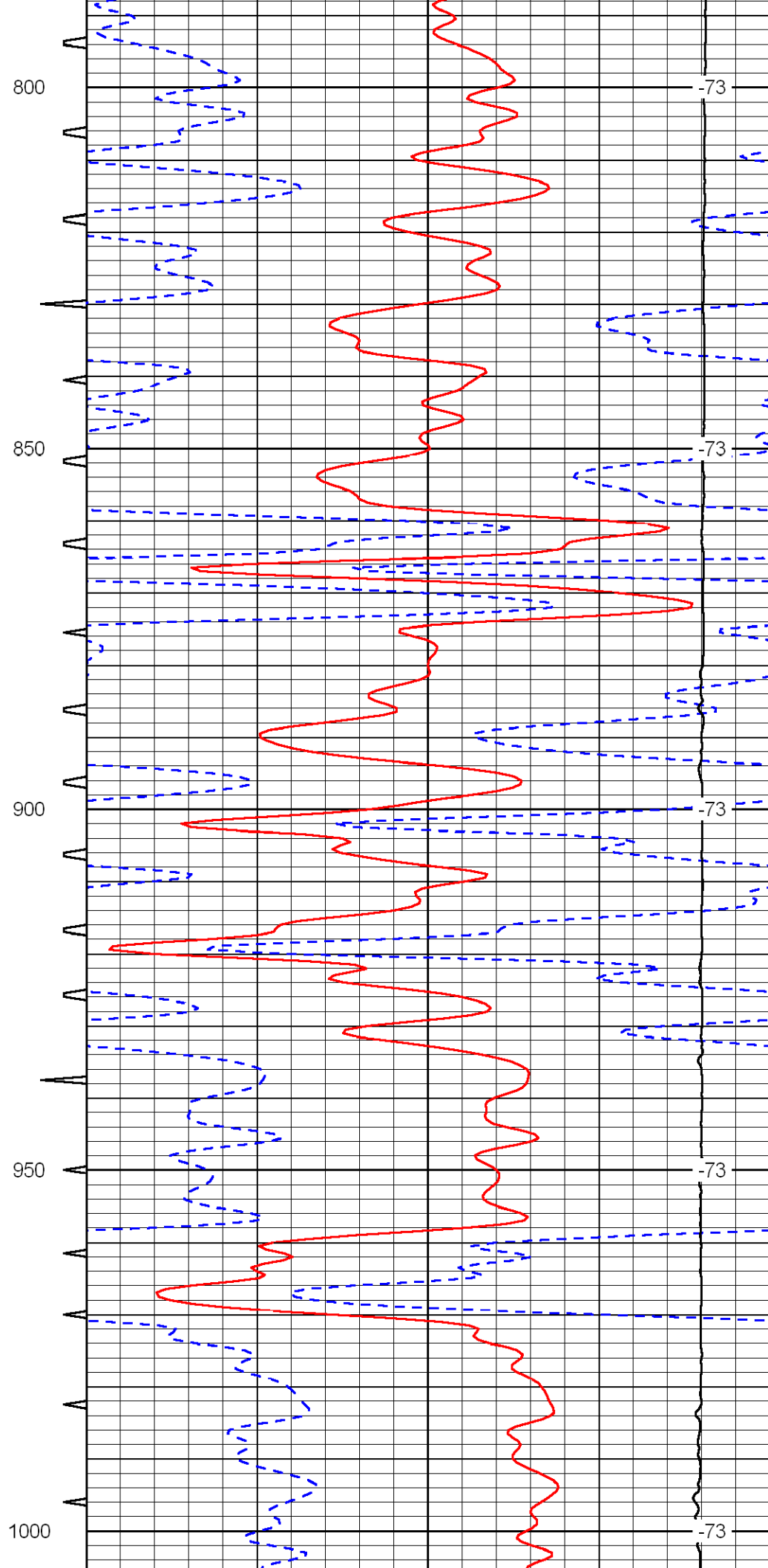
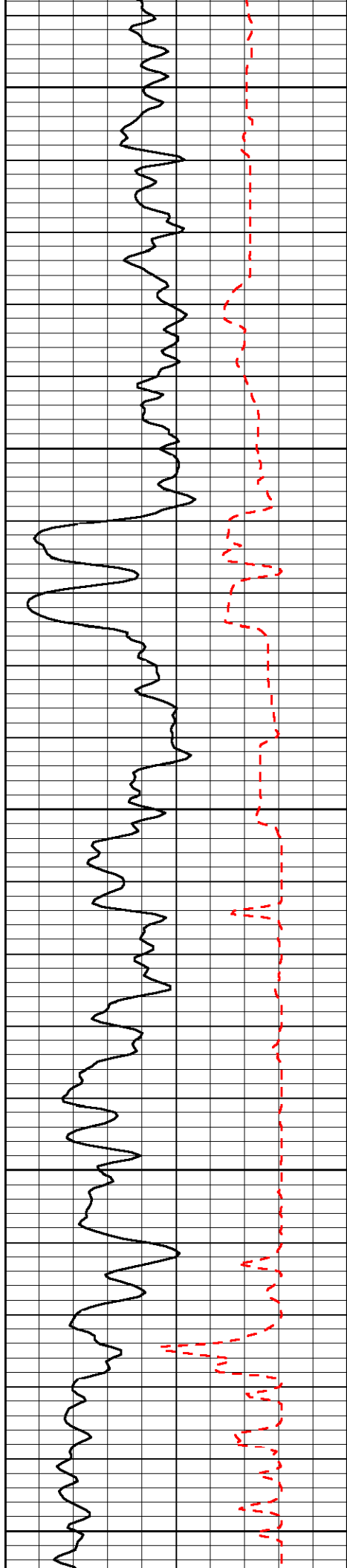
Thank you for using Log-Tech, Inc.  
(785) 625-3858

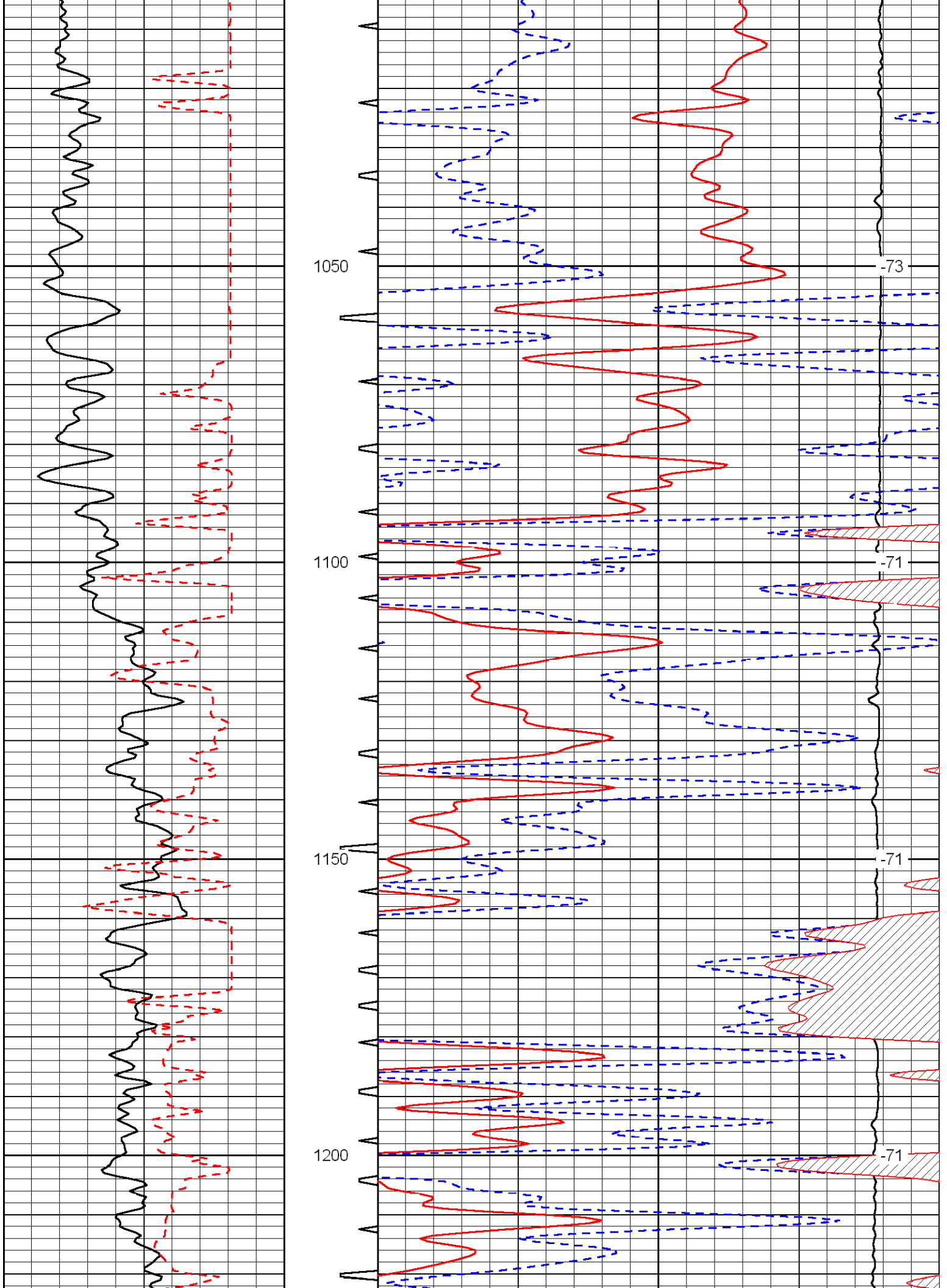
Protection, 2 1/2 West to 2 Rd, 2 South, 1/2 West, South Into

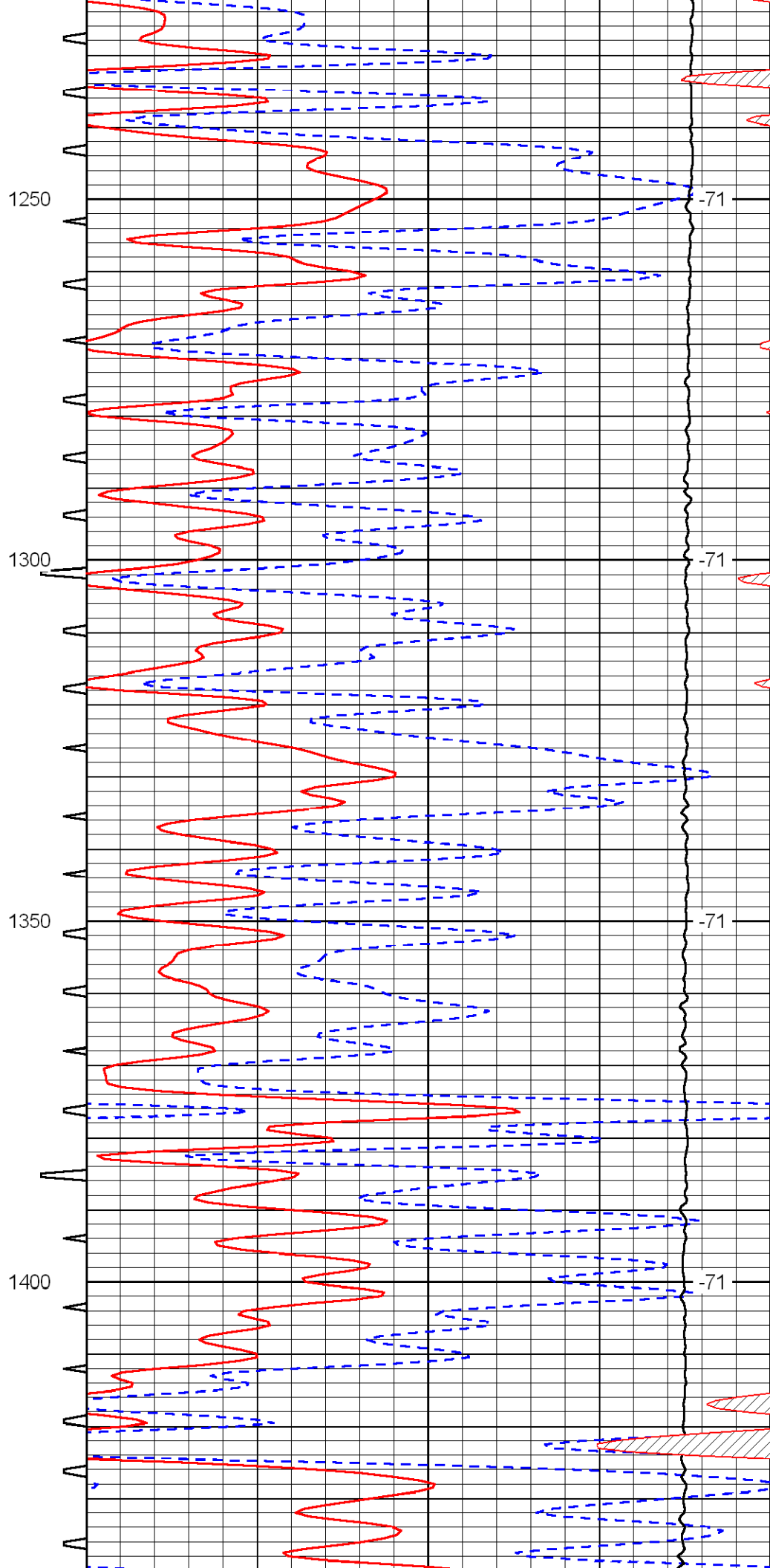
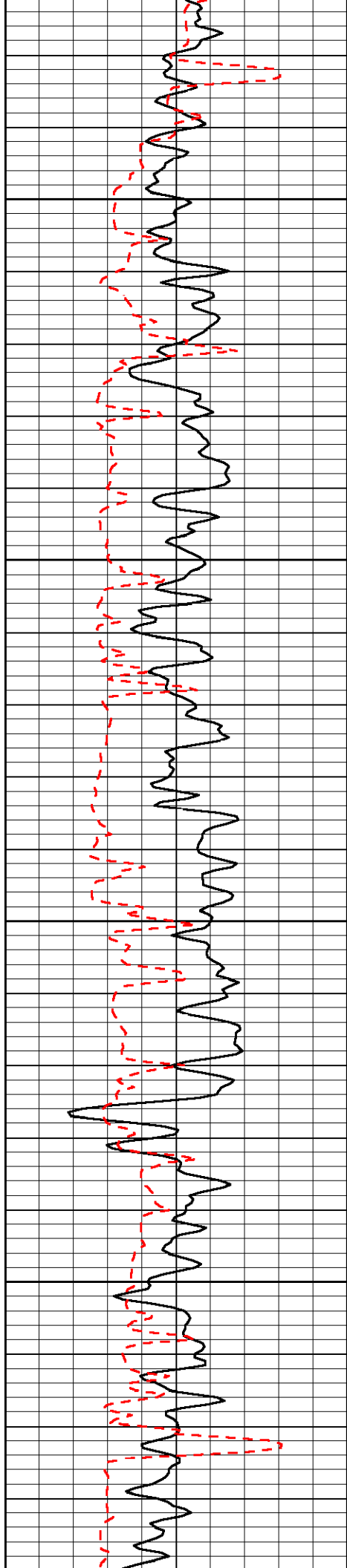
Database File: c:\warrior\data\murfin\_neoma 'a' #1-17\murf.db  
 Dataset Pathname: dil/mfnstk  
 Presentation Format: sonic  
 Dataset Creation: Wed Sep 09 16:14:07 2009  
 Charted by: Depth in Feet scaled 1:240

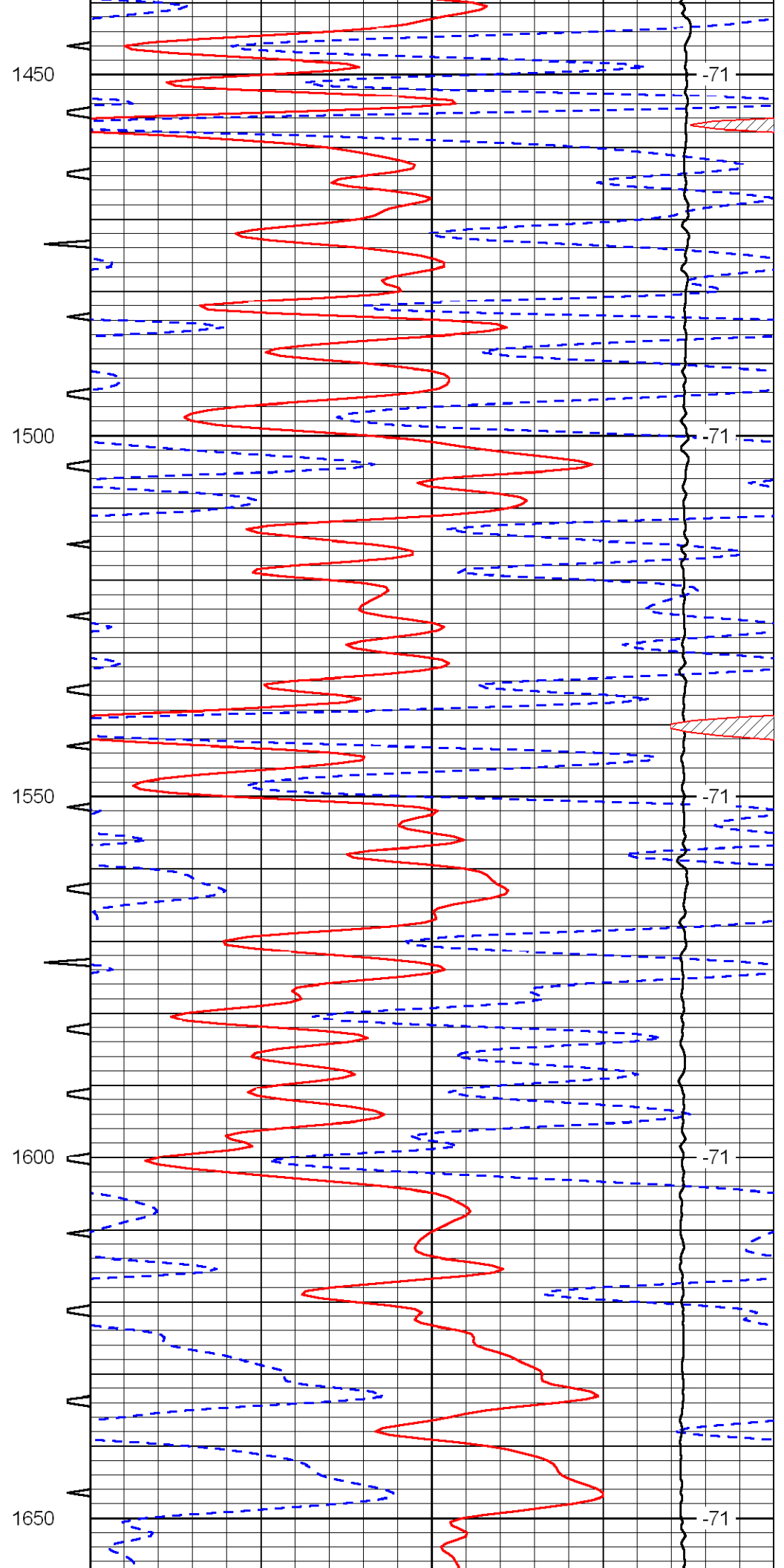
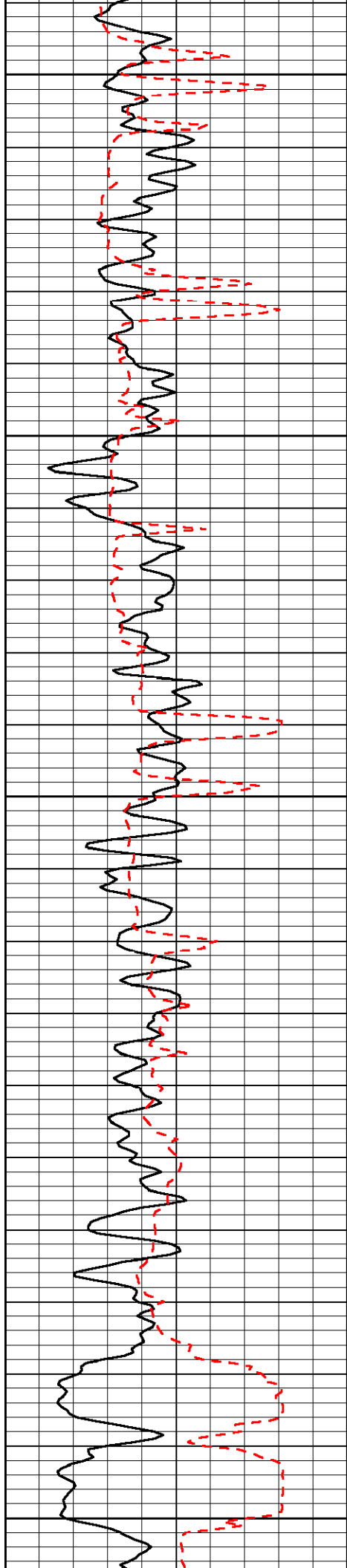
0	Gamma Ray	150	Sonic Int	140	Delta Time (usec/ft) (usec/ft)	40
150	Gamma Ray	300	5 (msec)	0	SPOR (pu)	-10
6	Caliper (in)	16		10000	LTEN (lb) (lb)	0
						LSPD (ft/min)

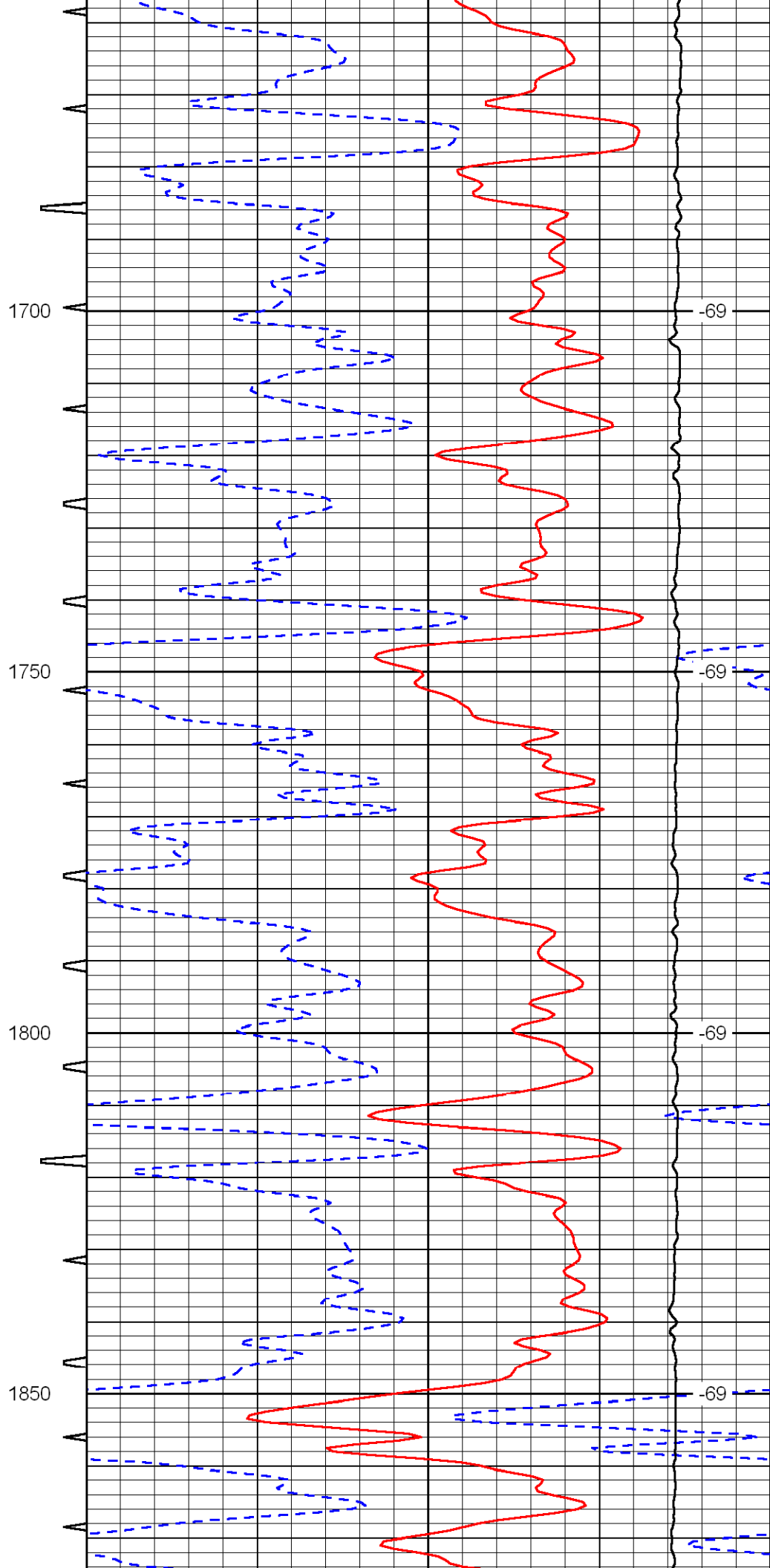
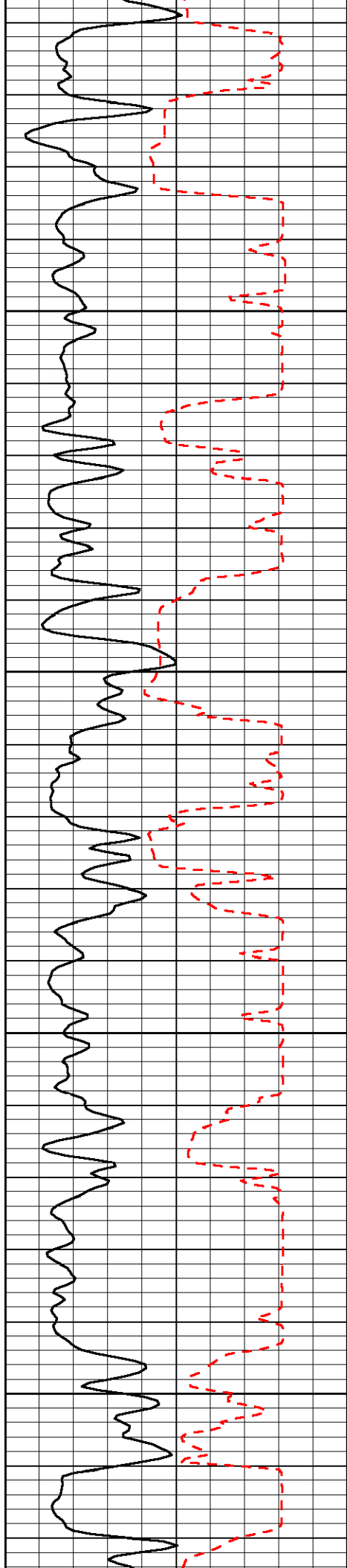


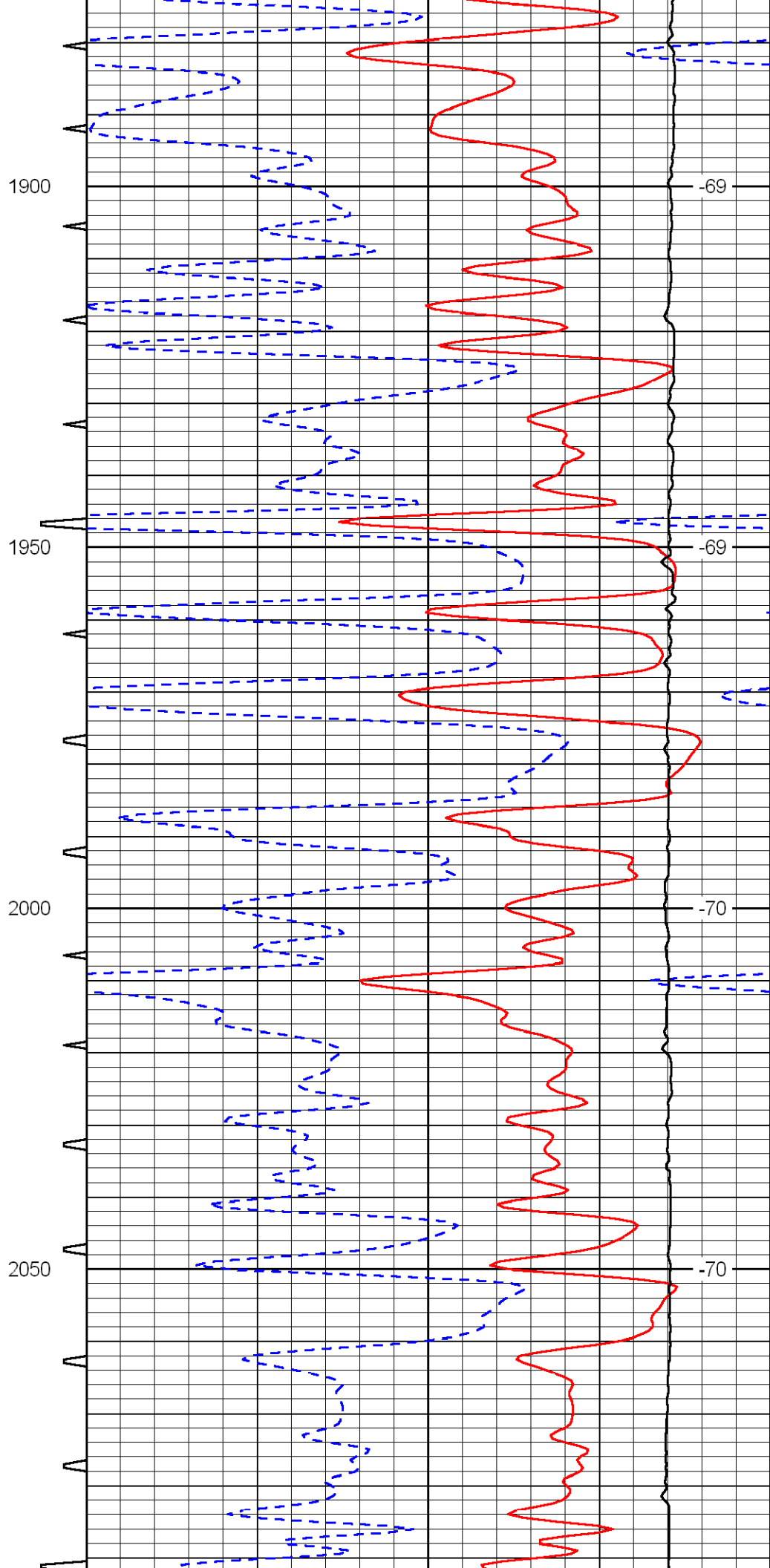
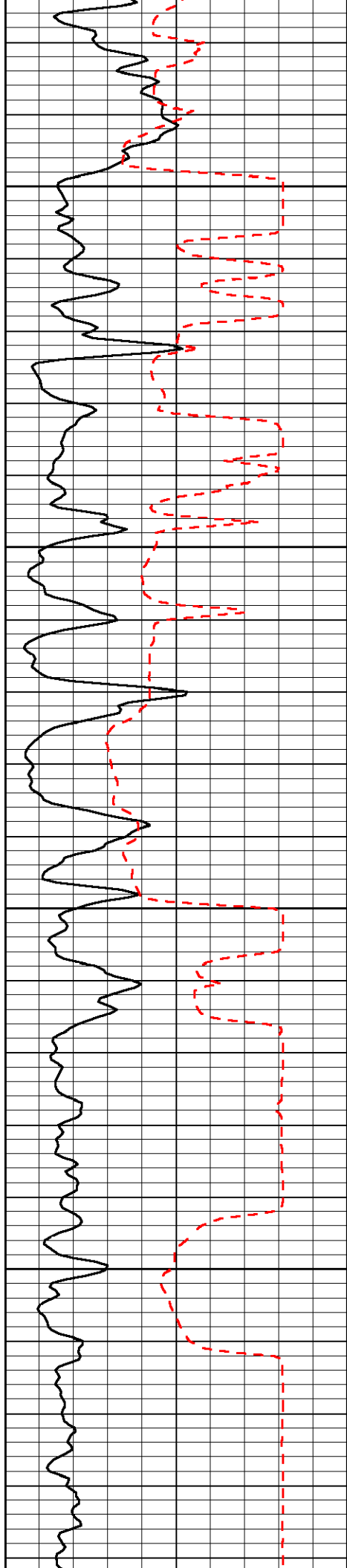


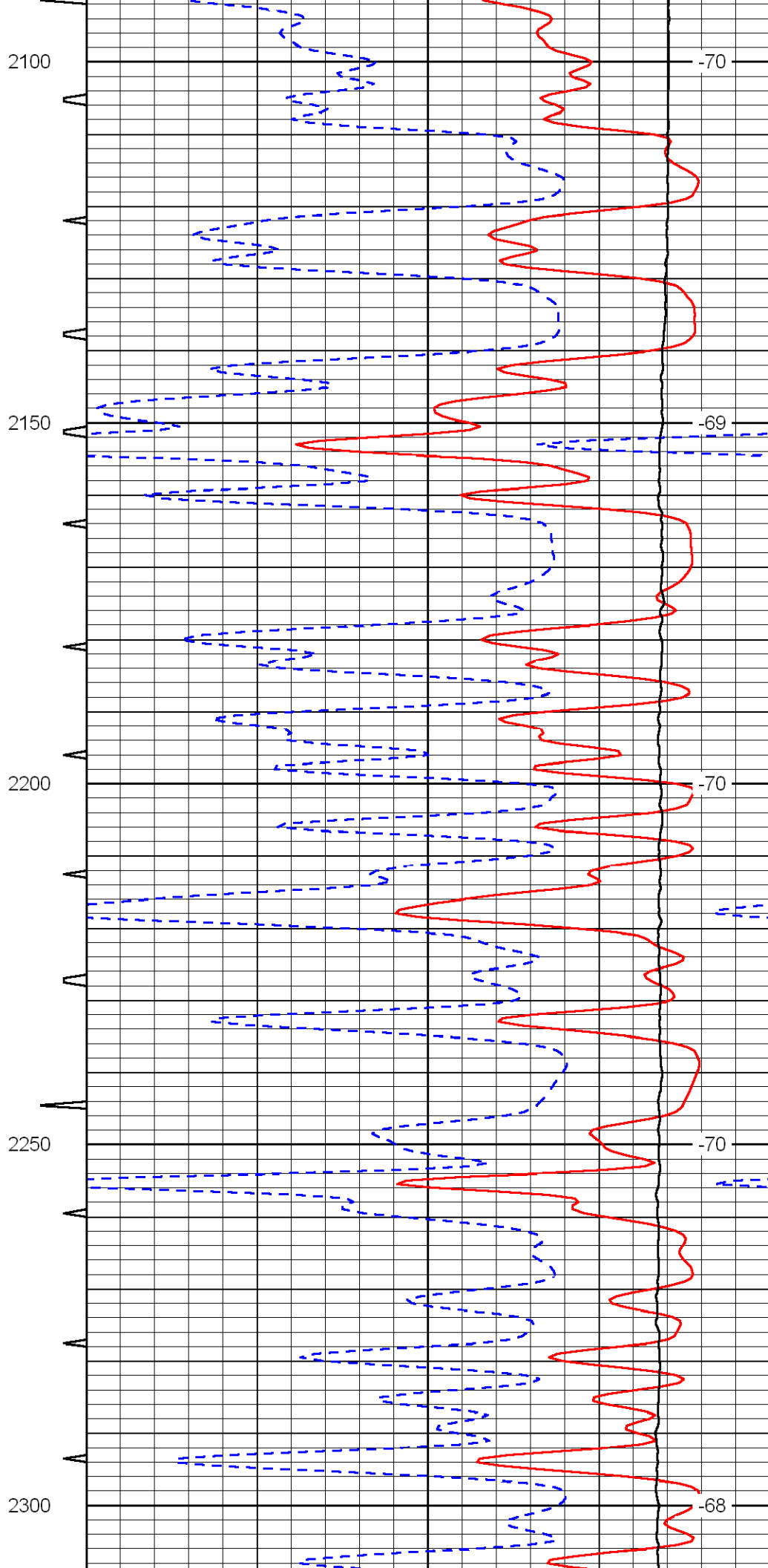
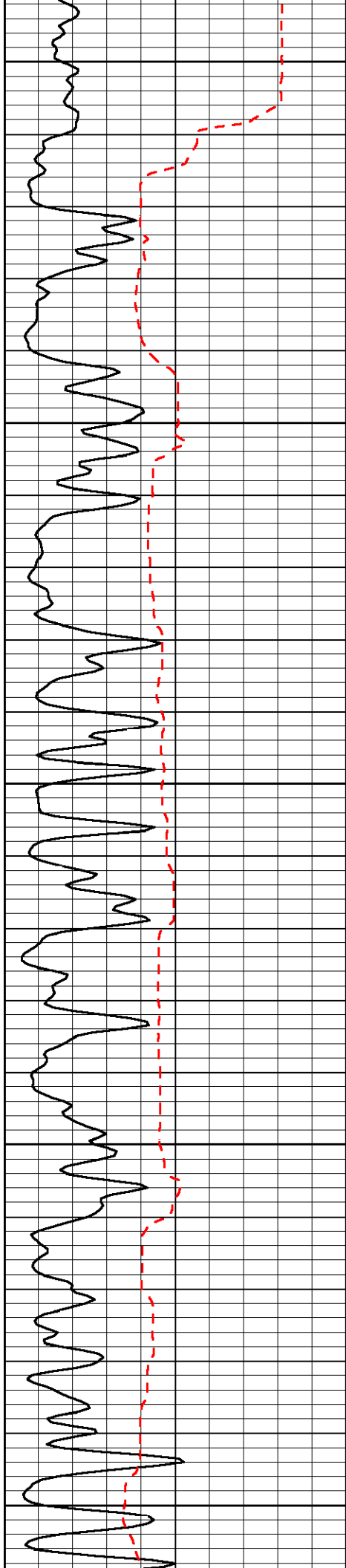


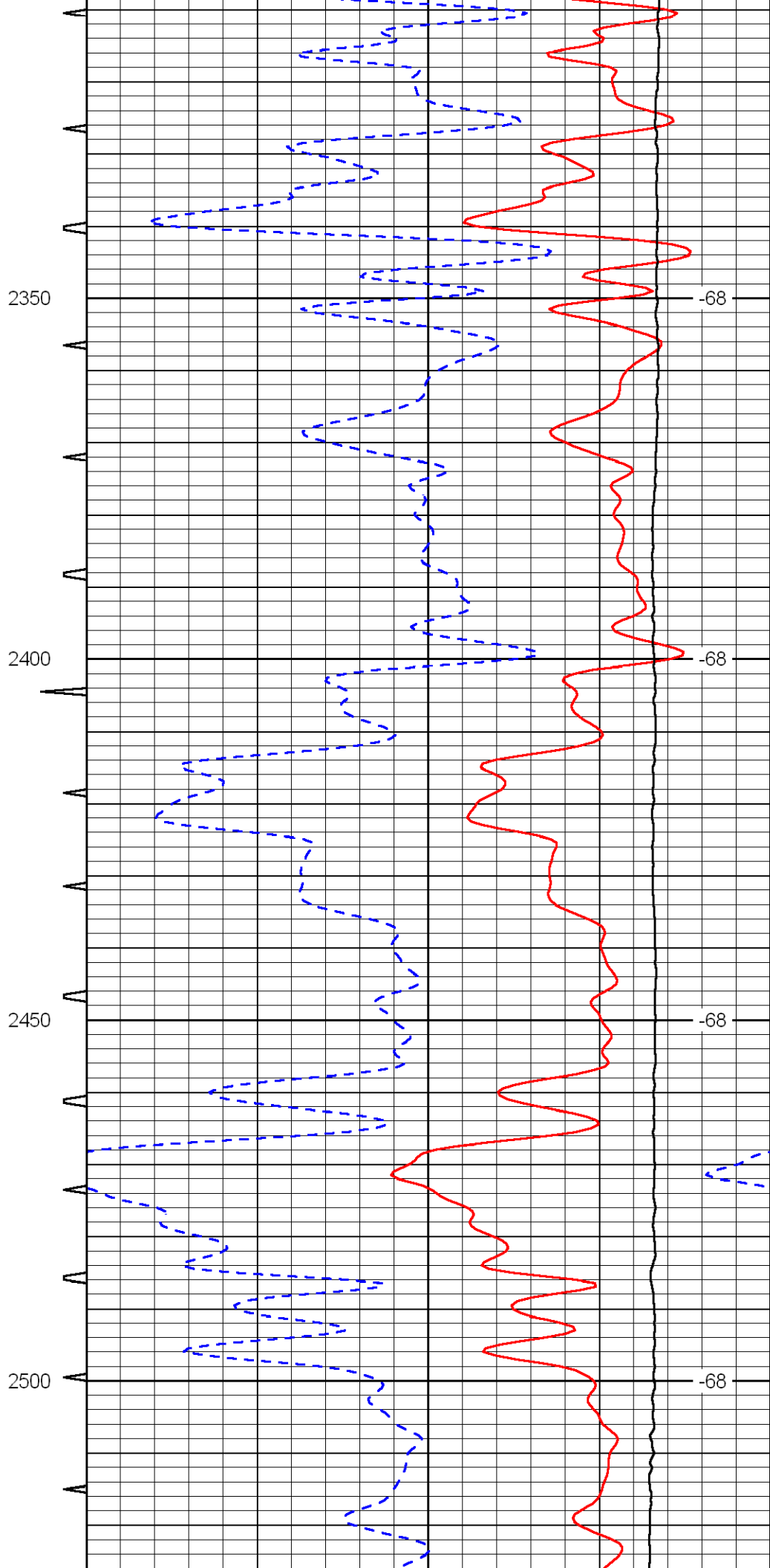
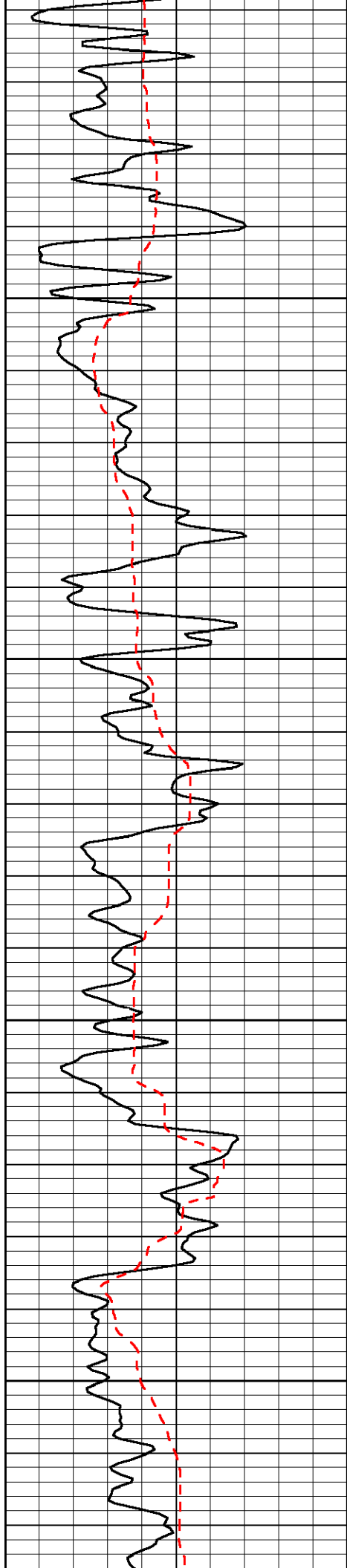


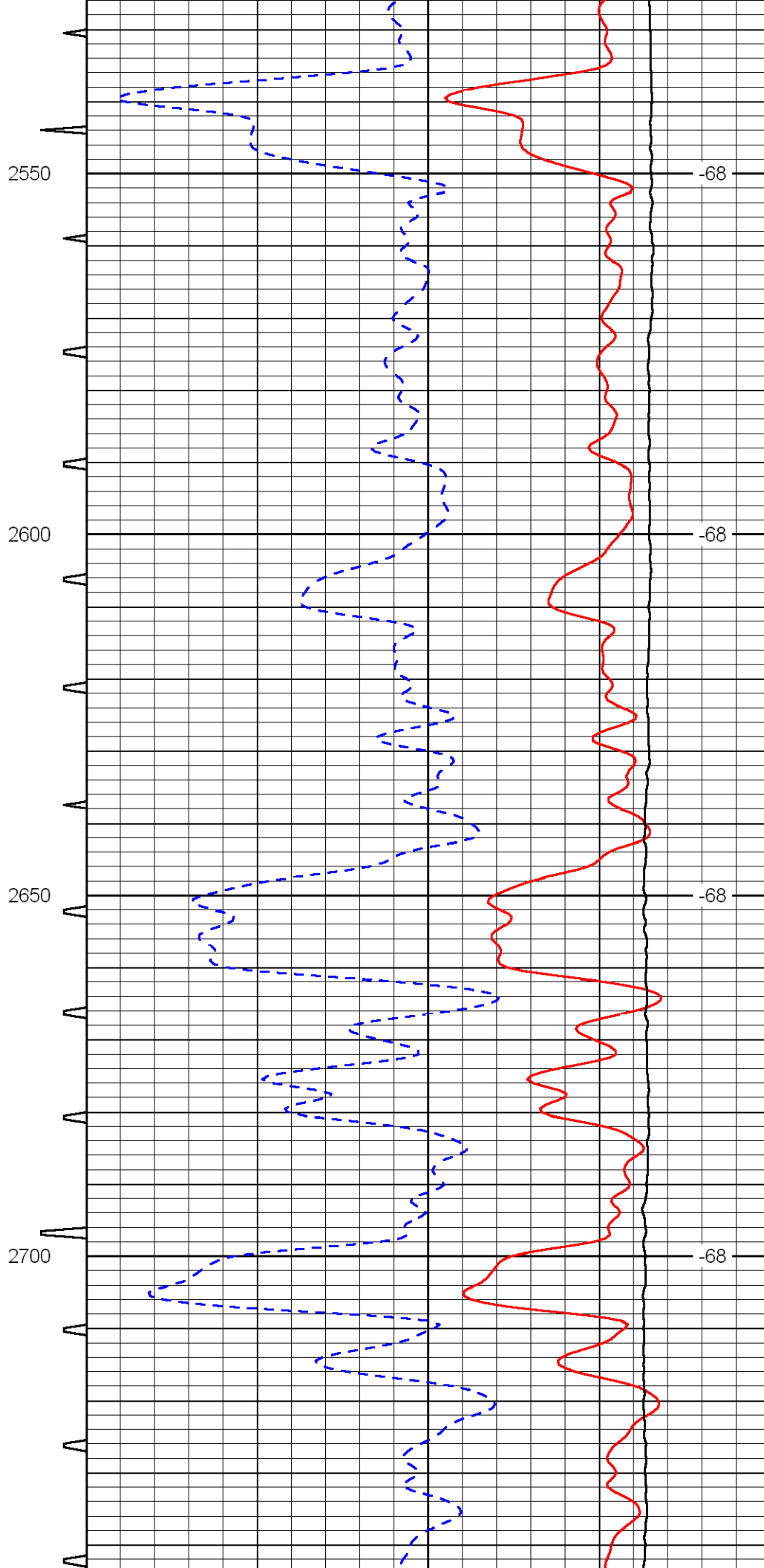
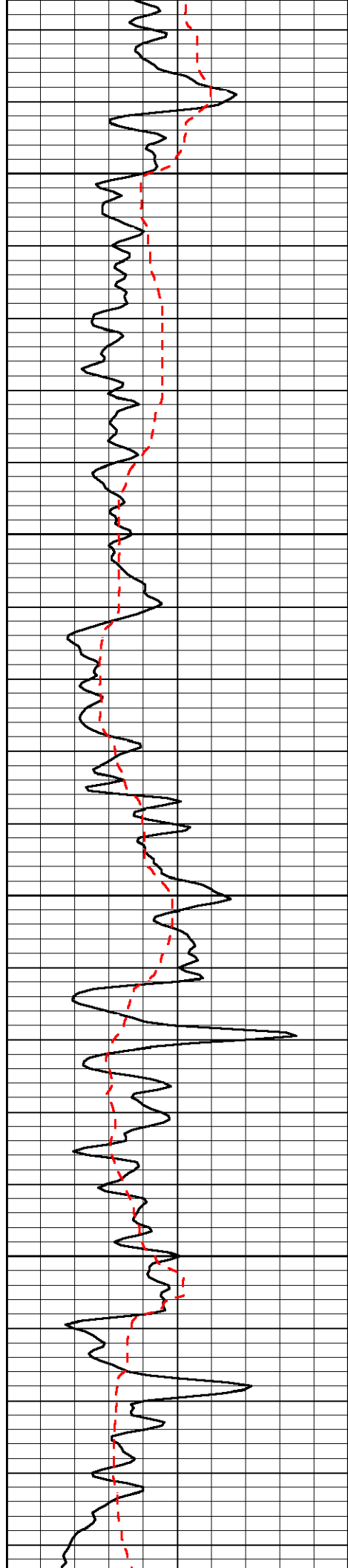


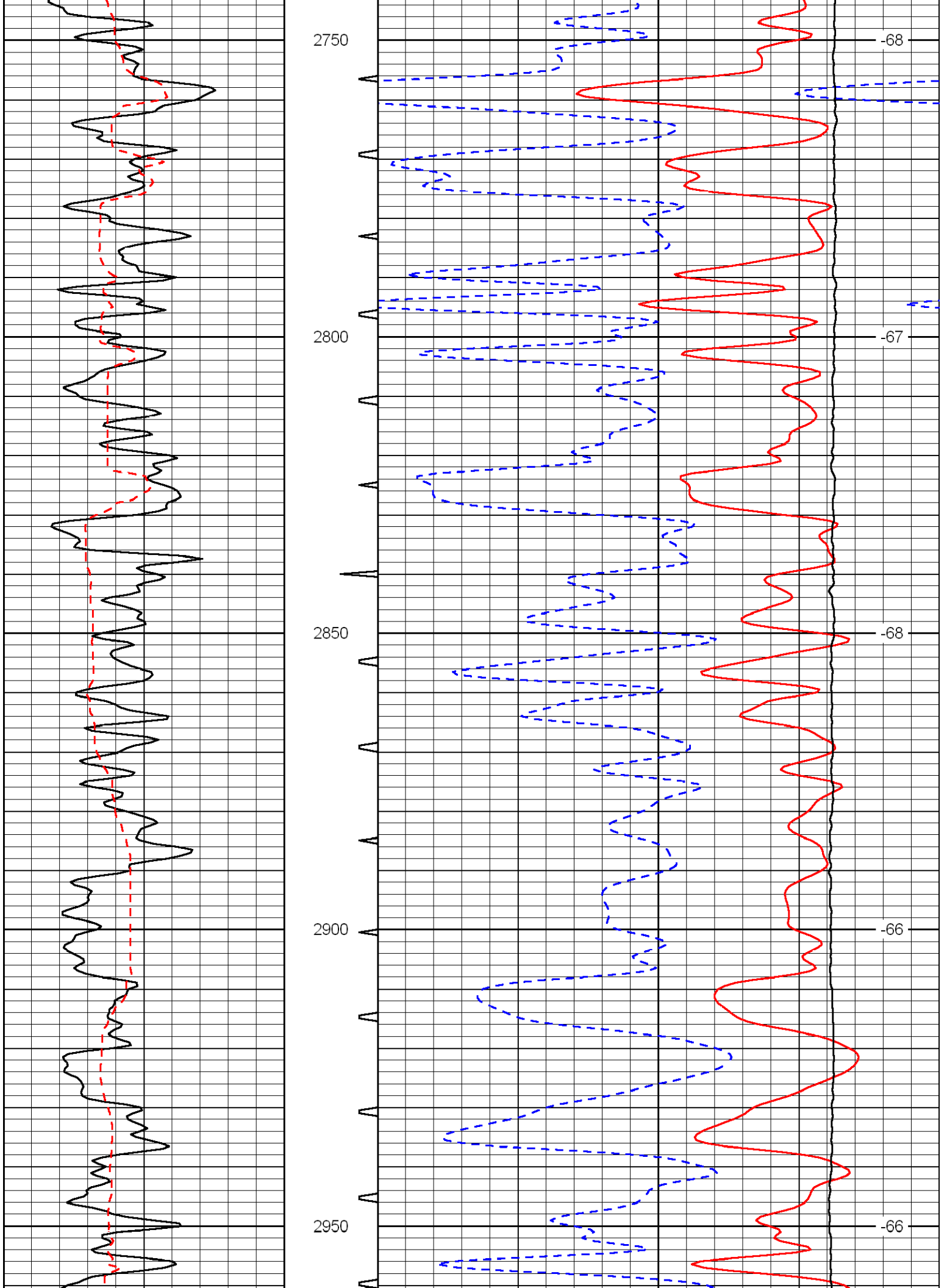


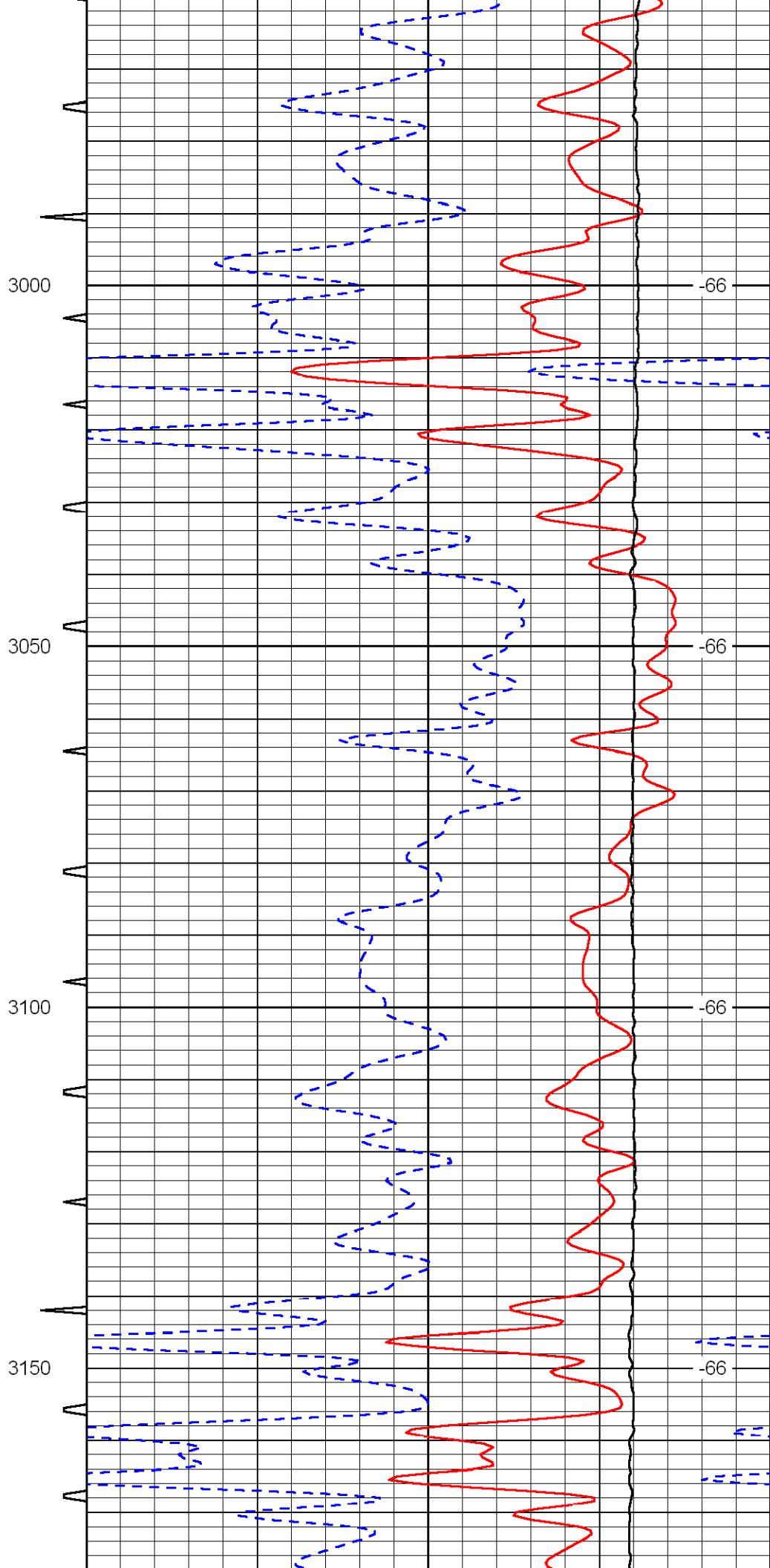
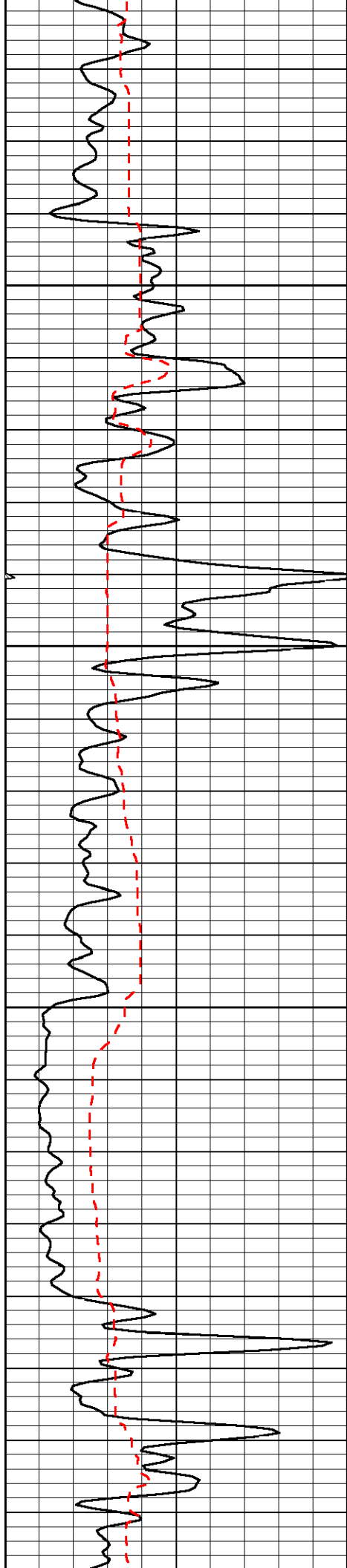


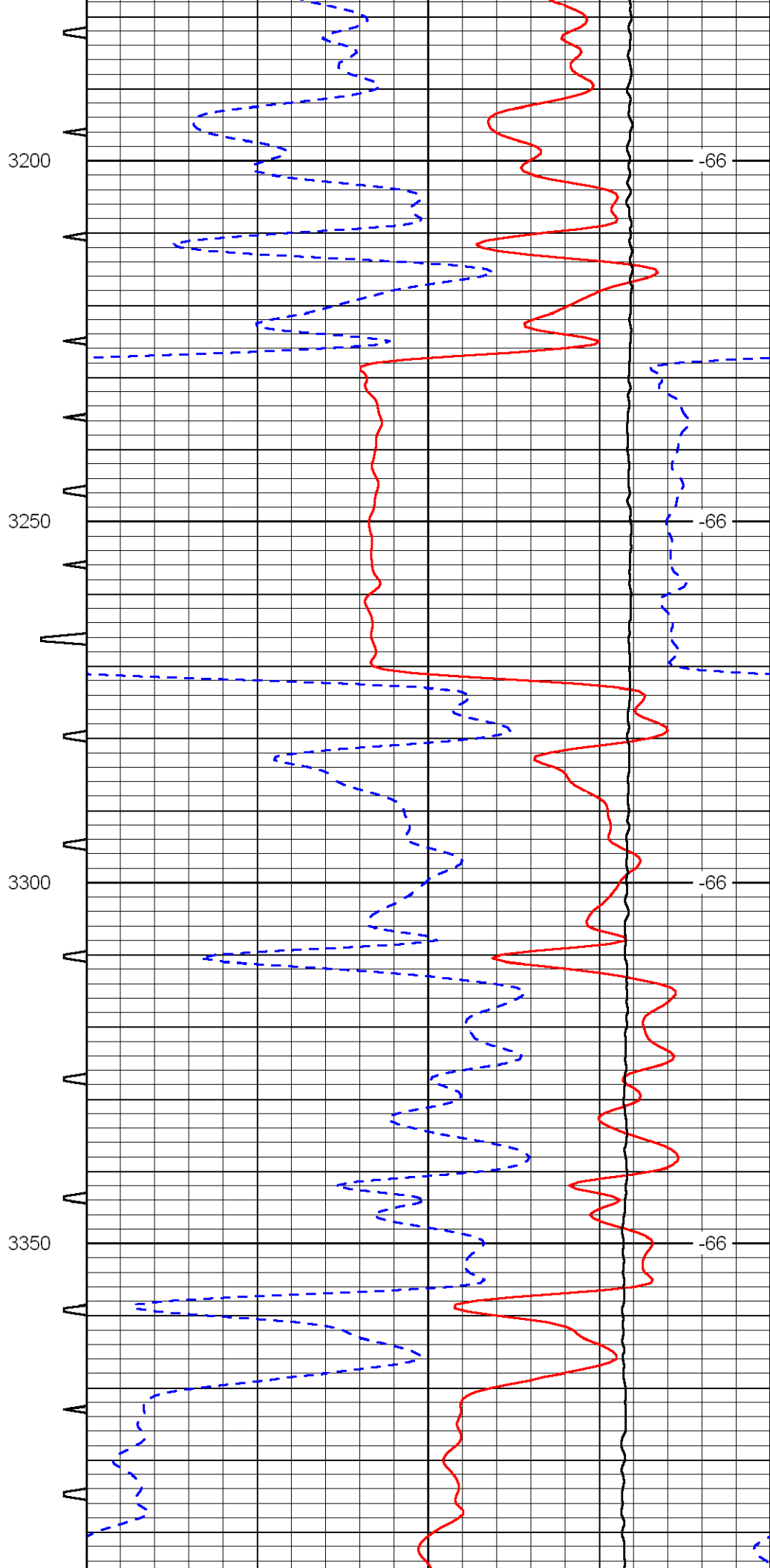
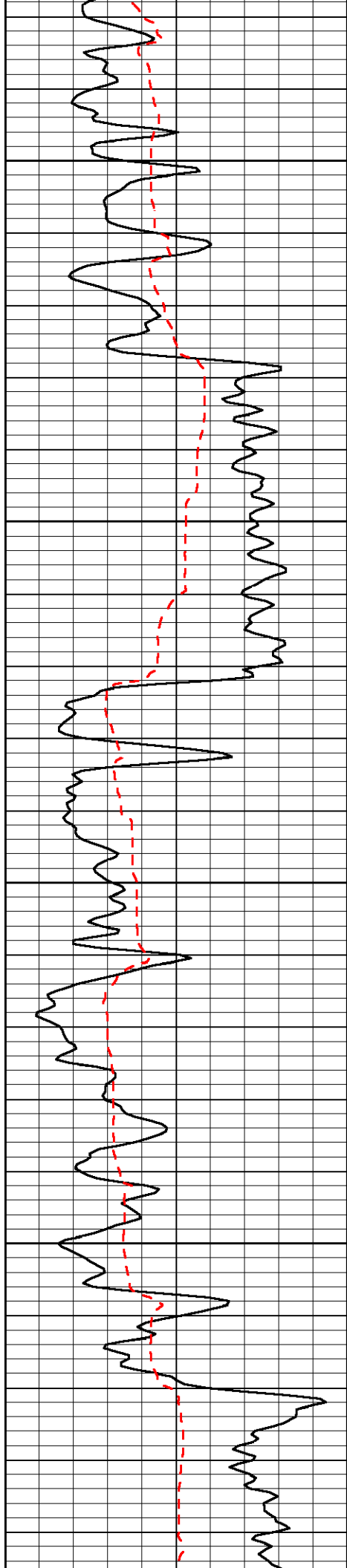


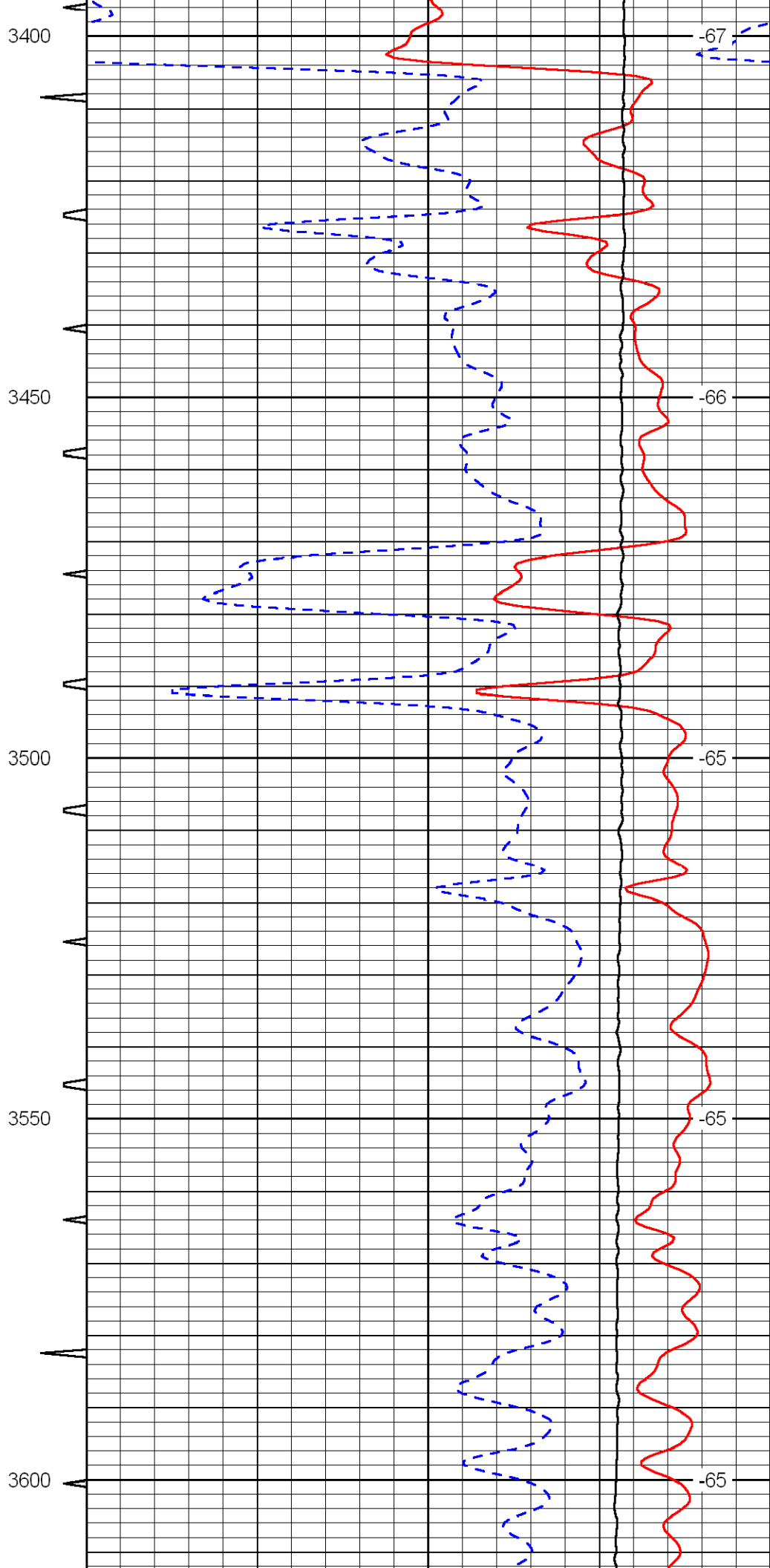
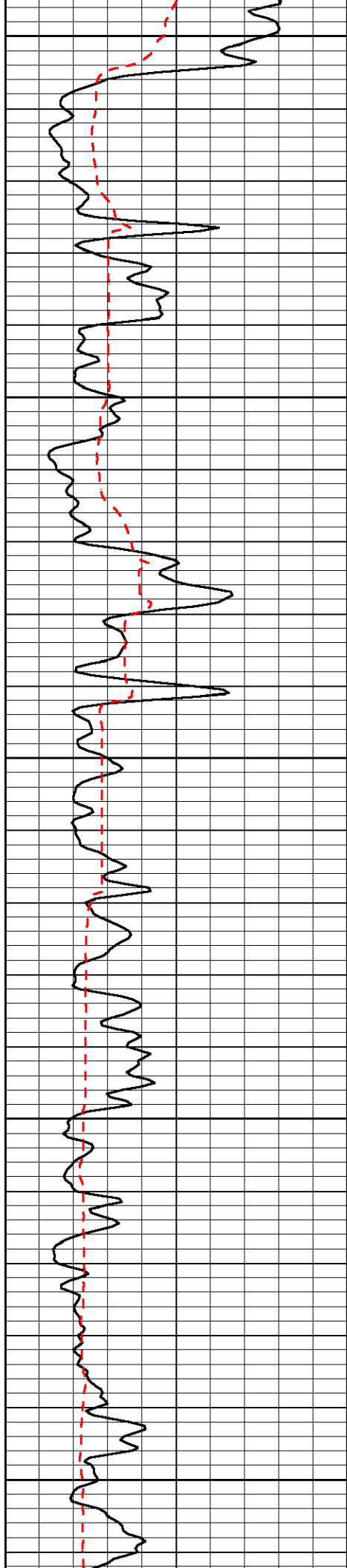


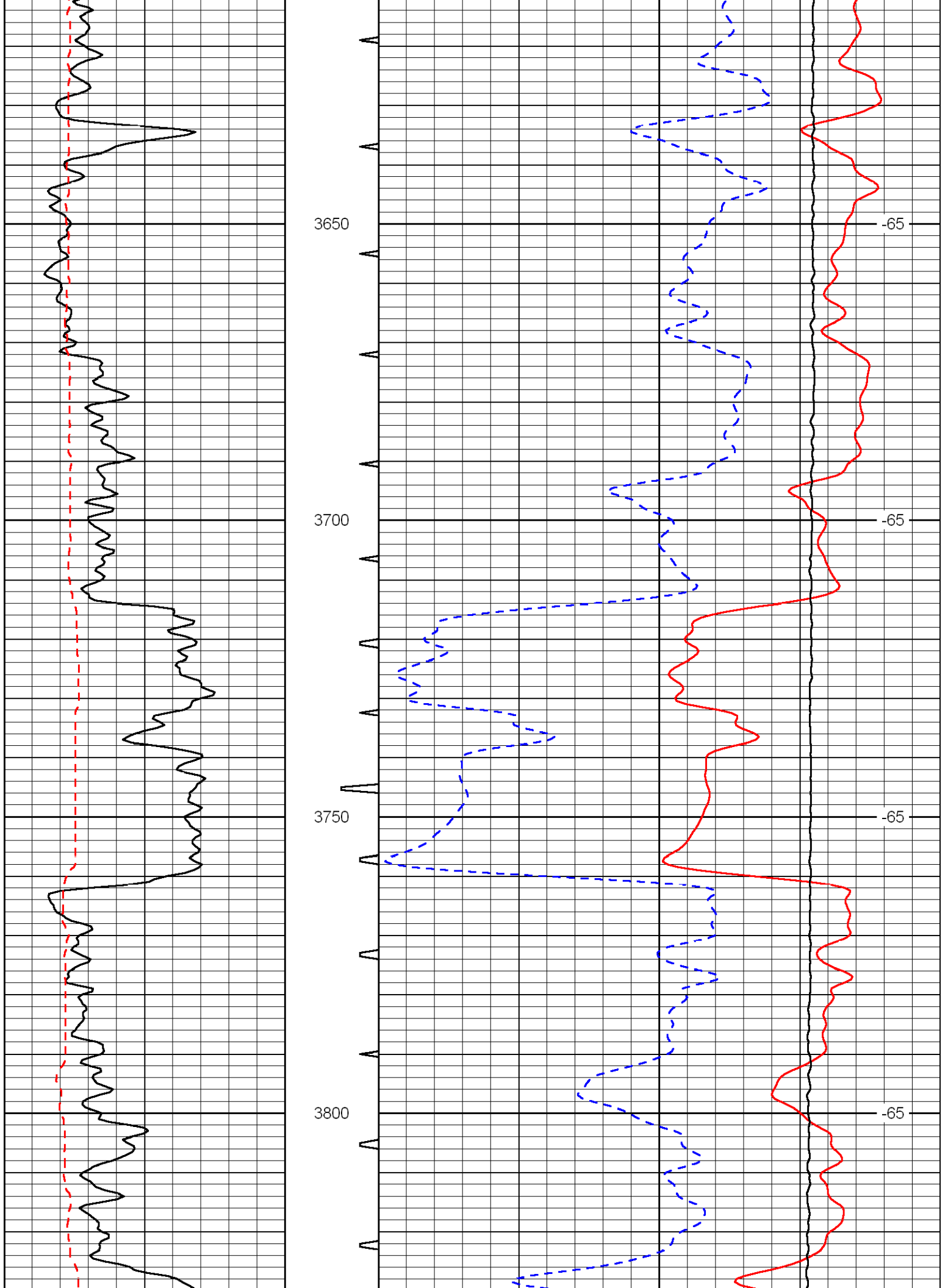


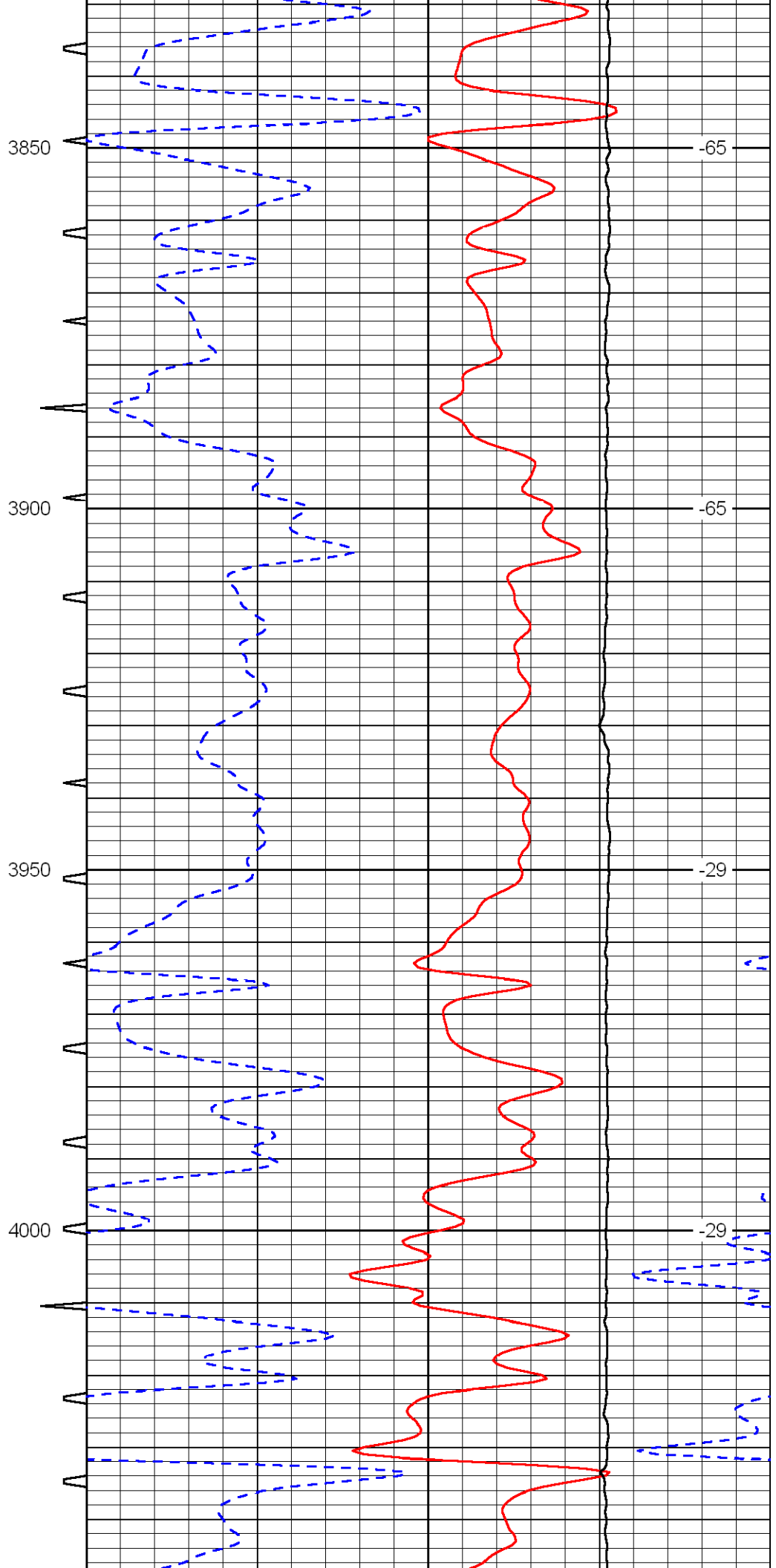
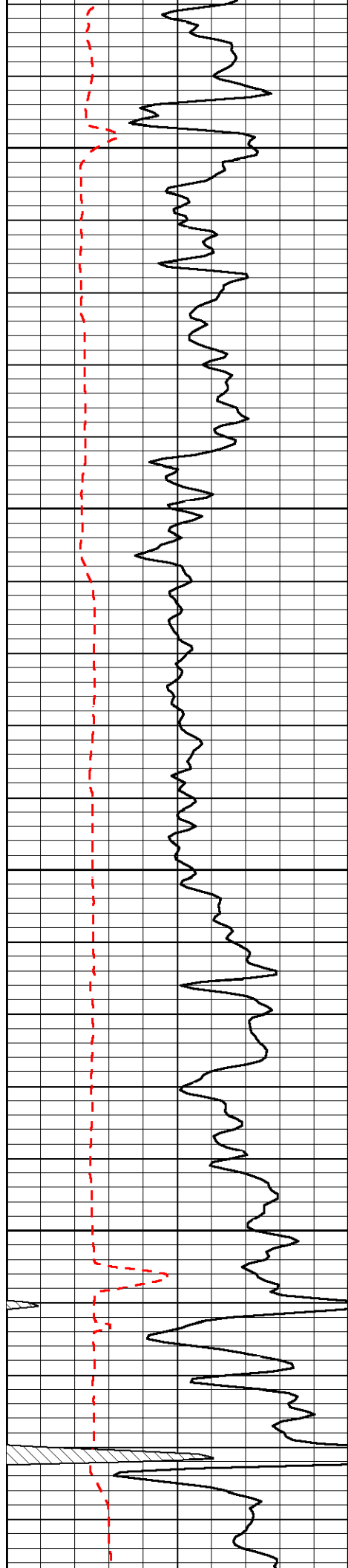


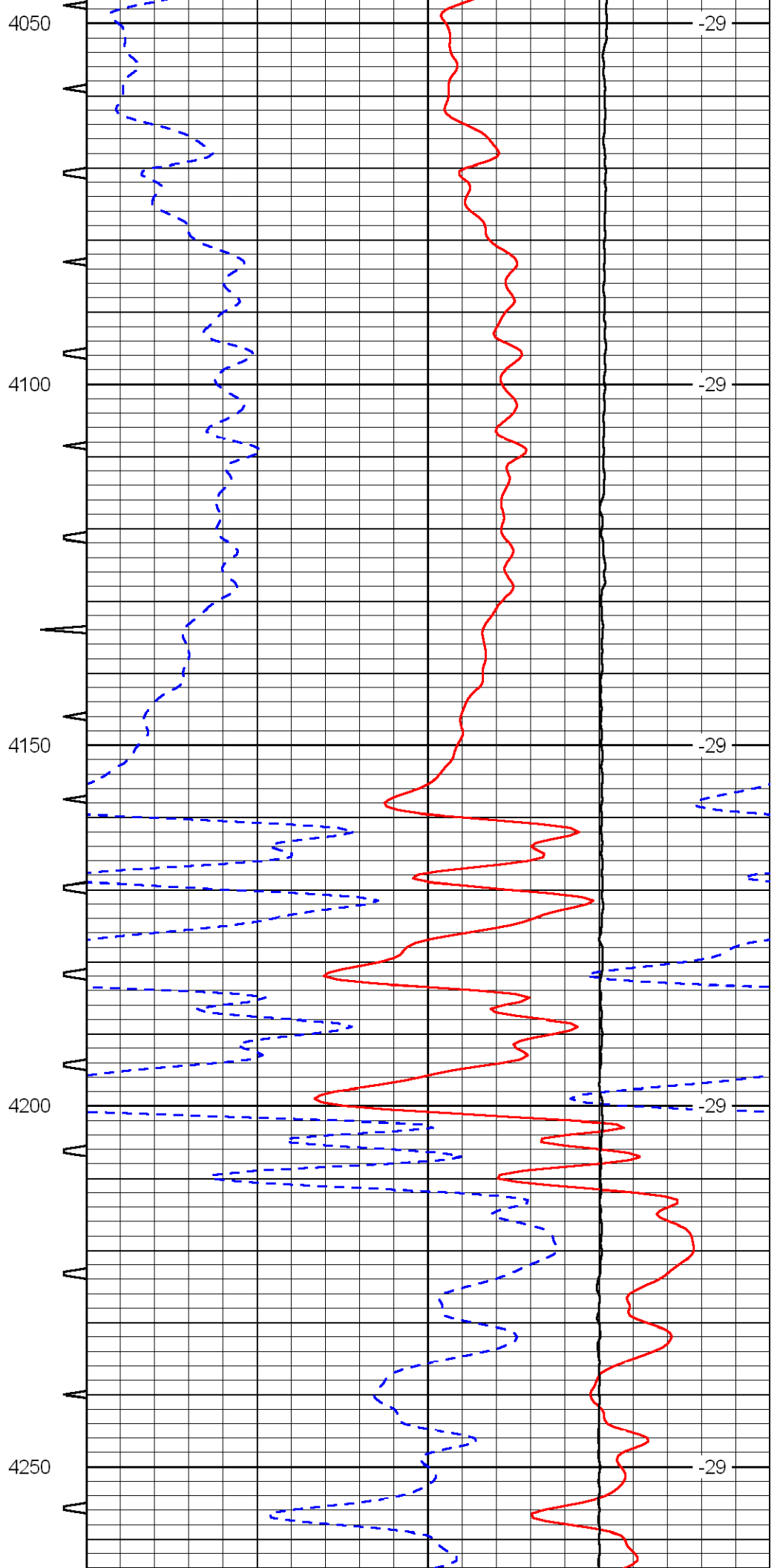
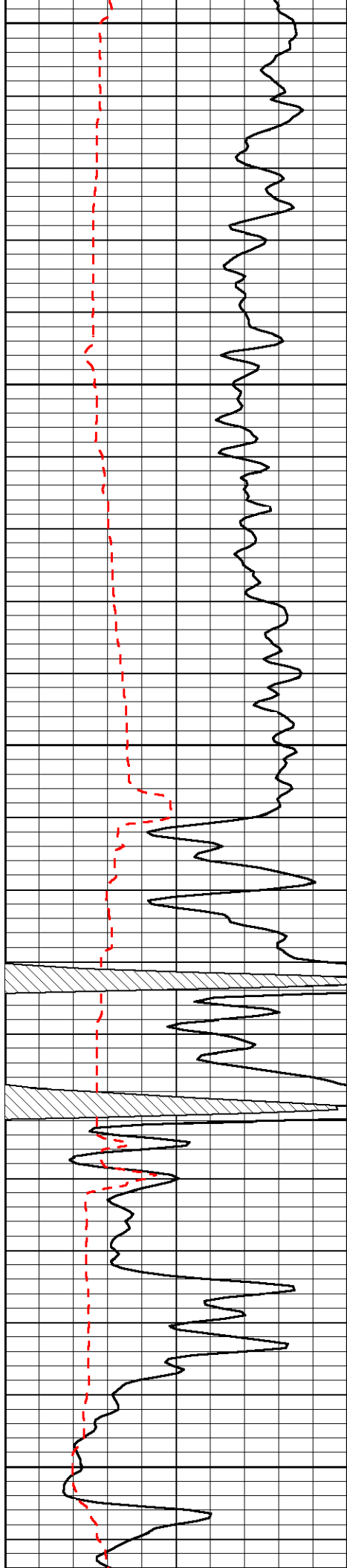


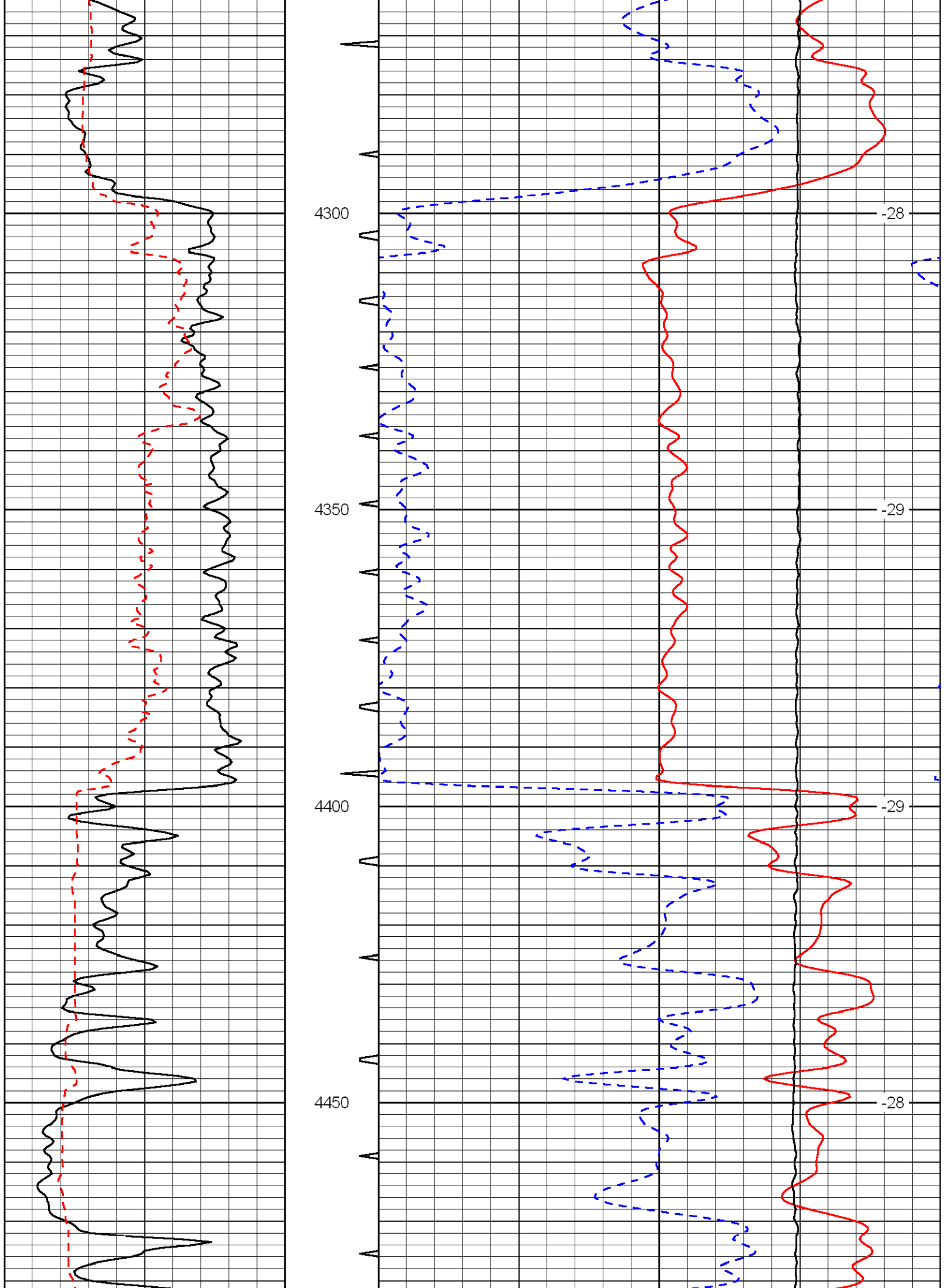


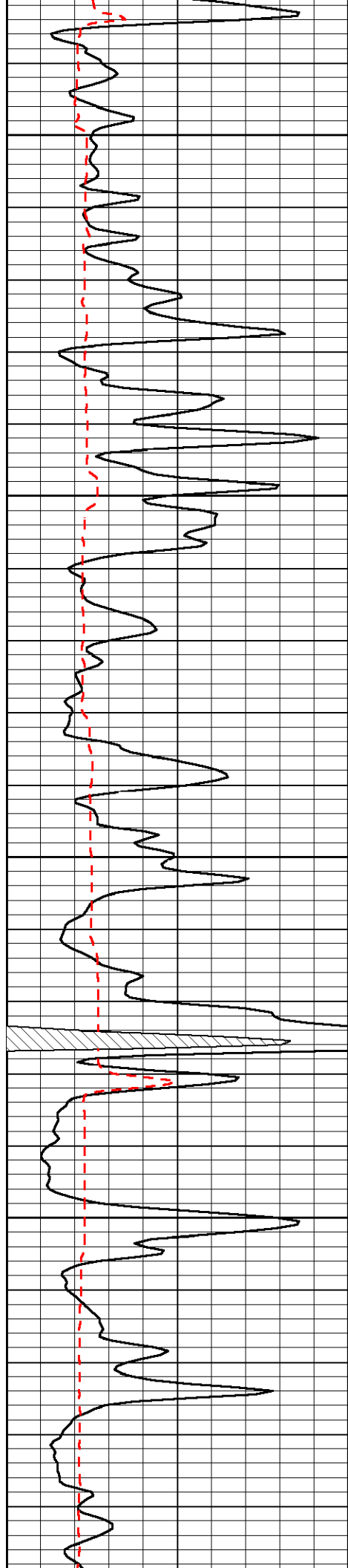










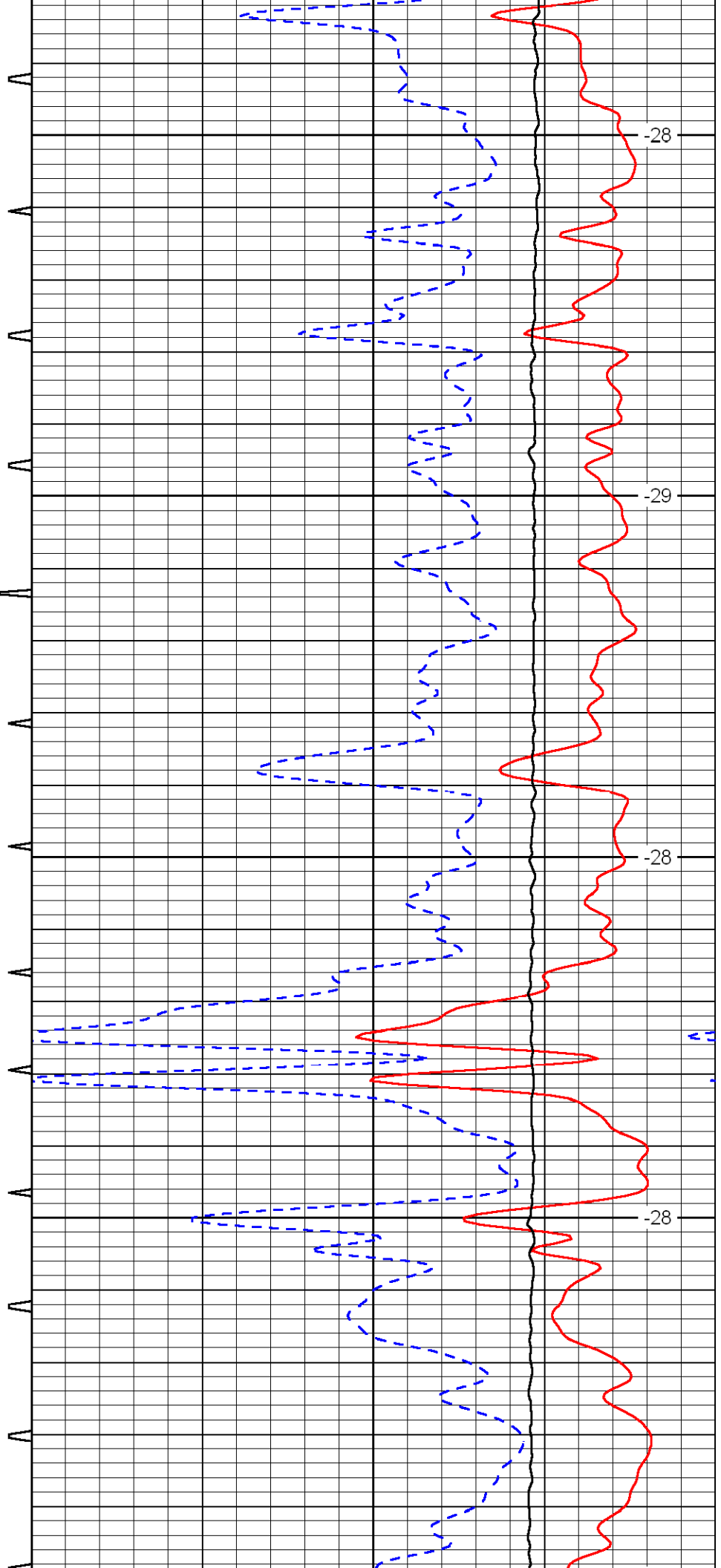


4500

4550

4600

4650

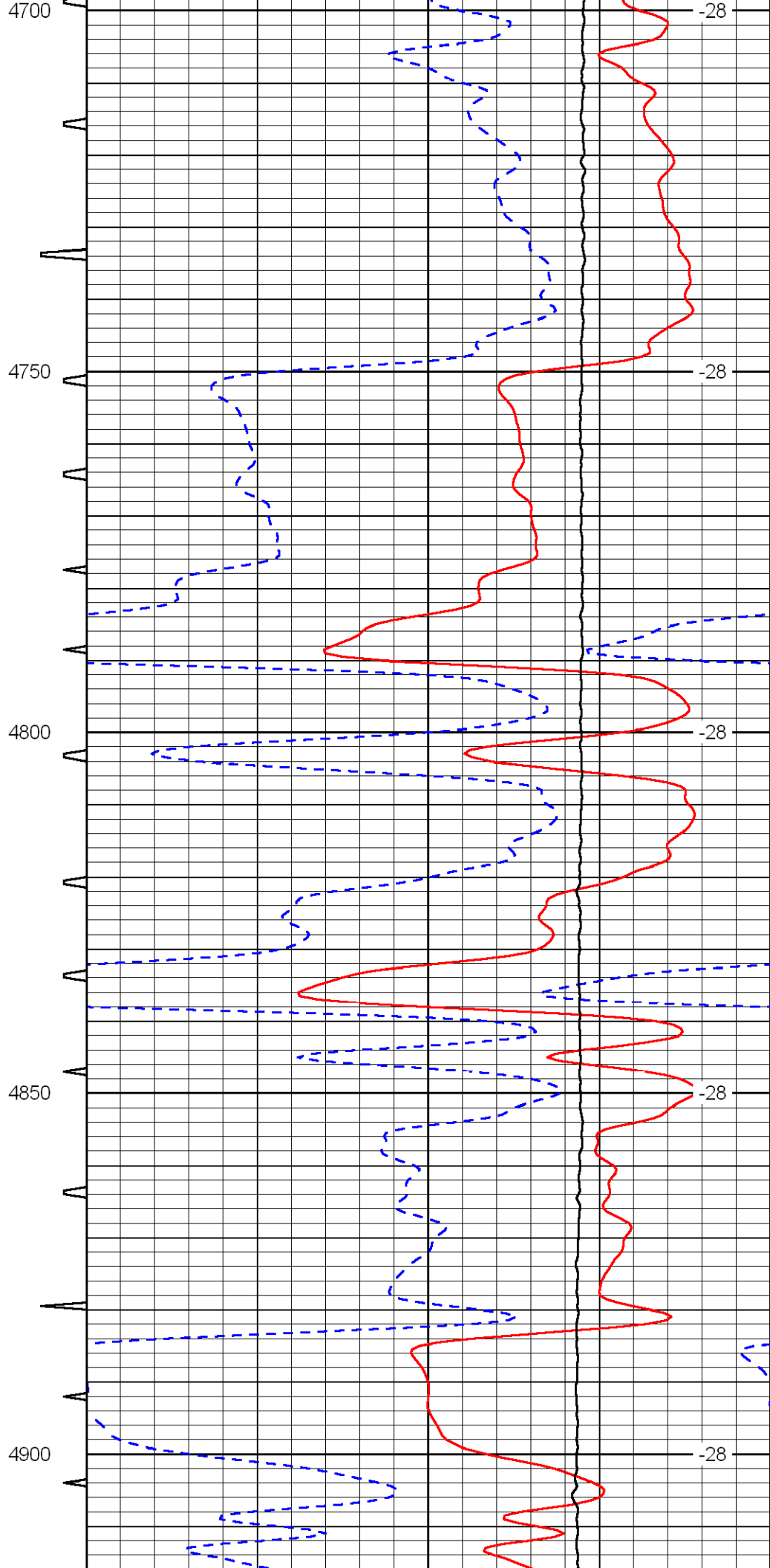
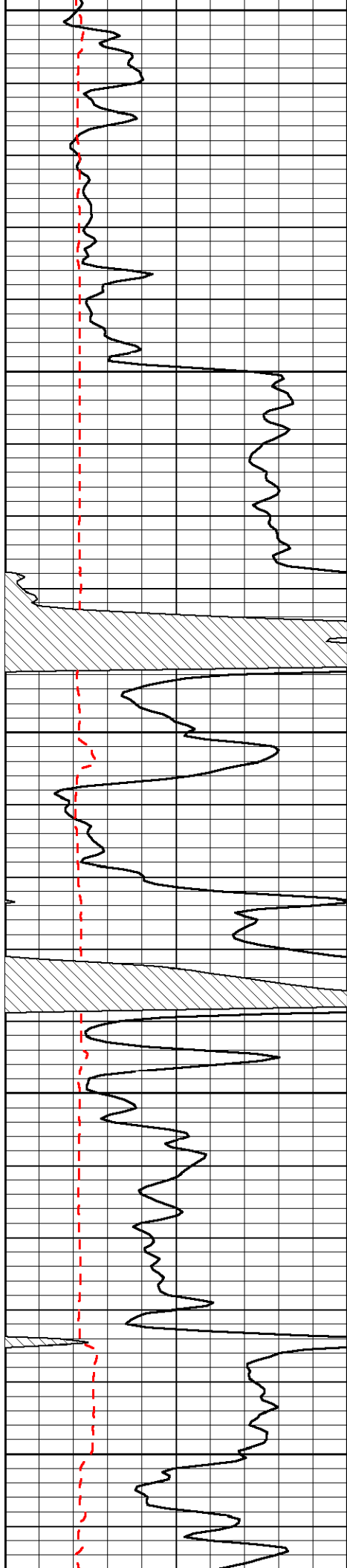


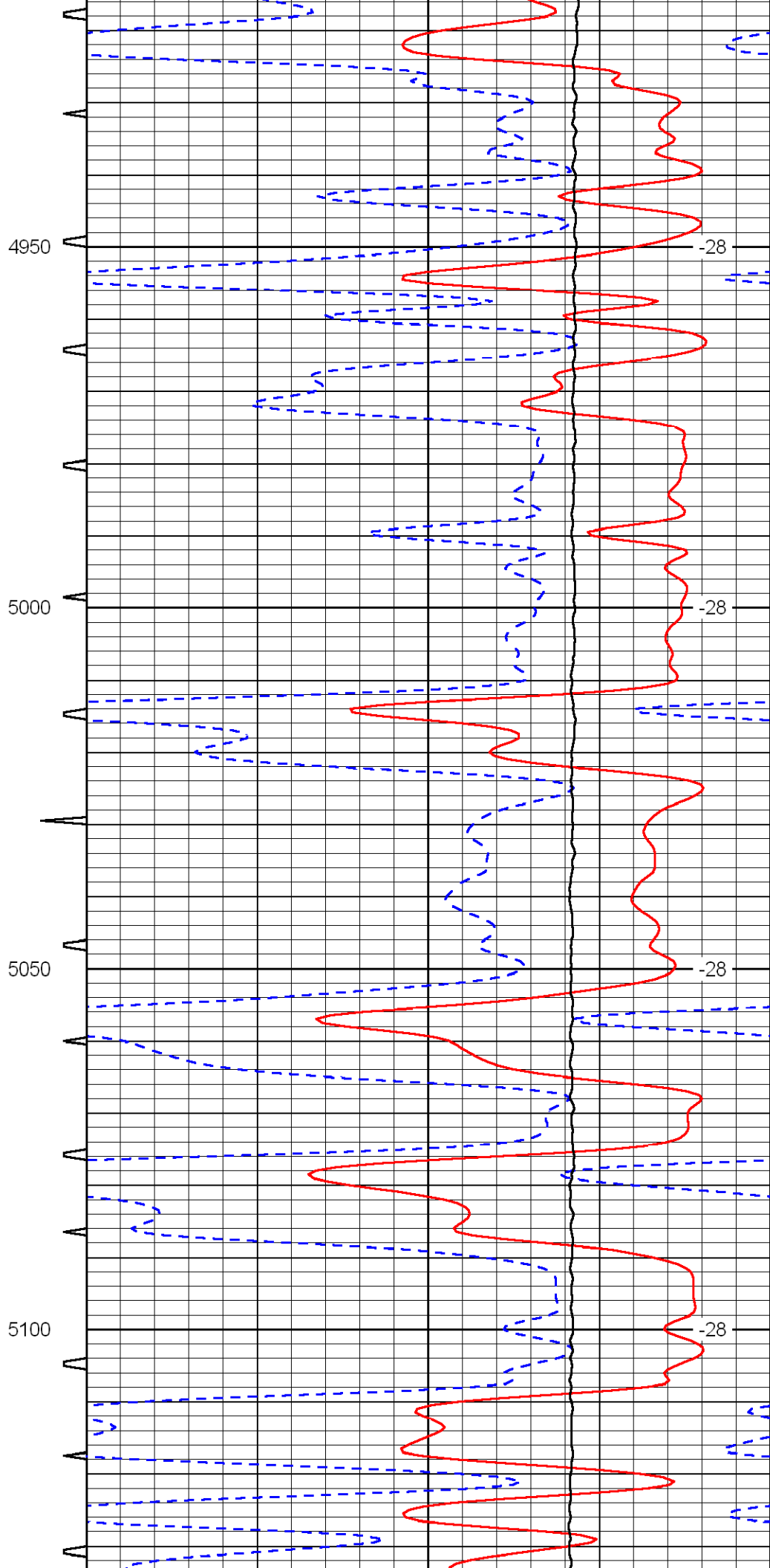
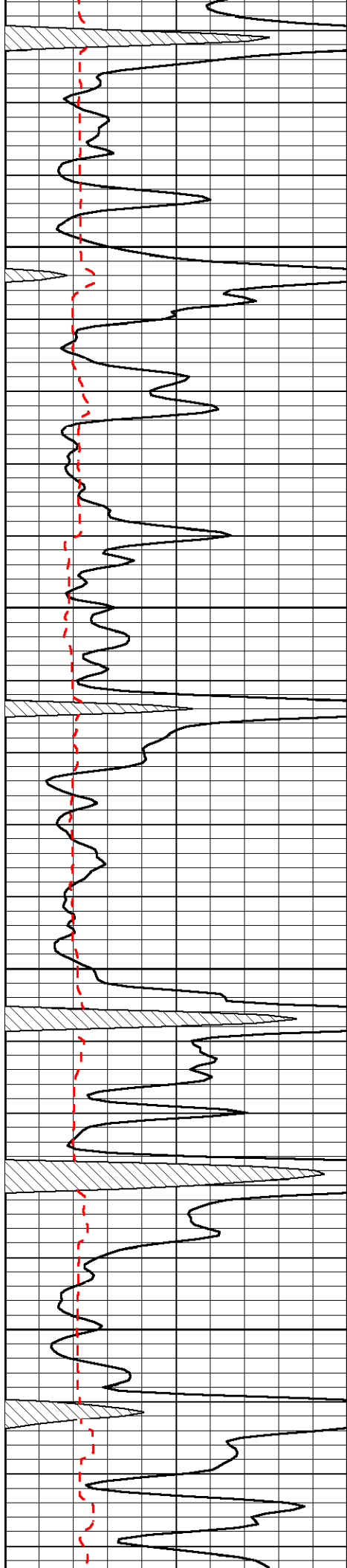
-28

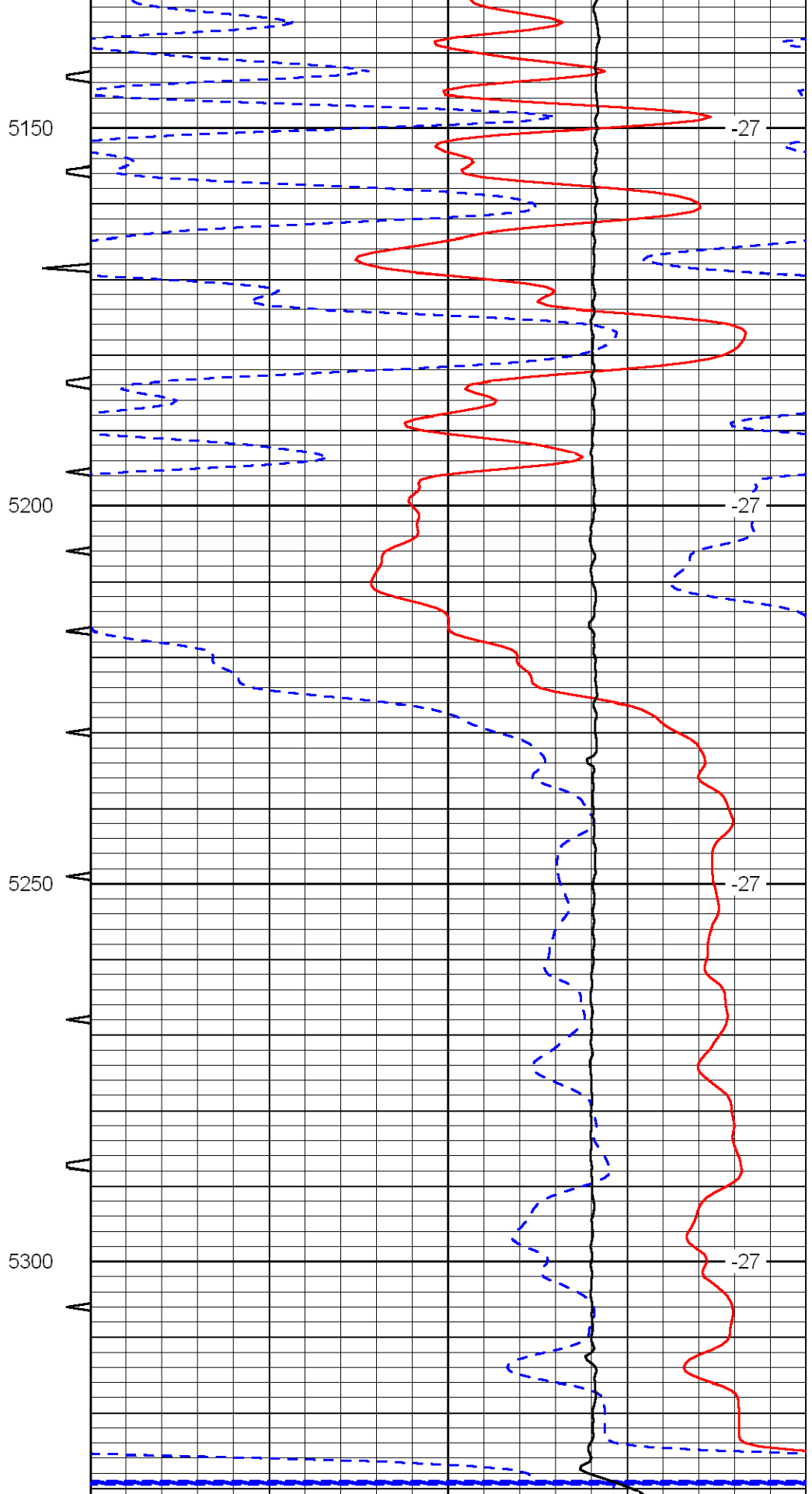
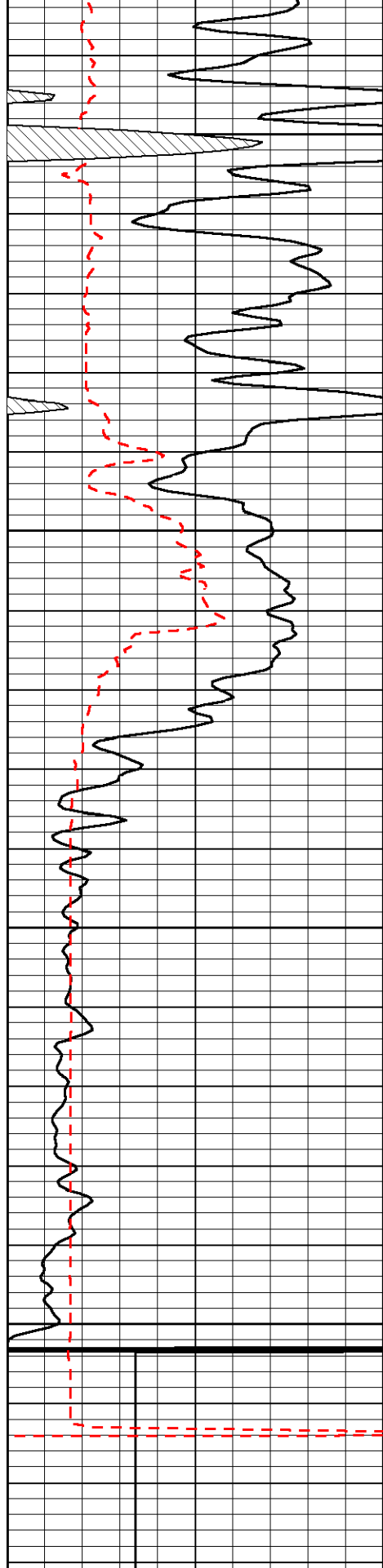
-29

-28

-28







0	Gamma Ray	150
150	Gamma Ray	300
6	Caliper (in)	16

Sonic Int	140	Delta Time (usec/ft) (usec/ft)	40
5 (msec)	0	SPOR (pu)	-10
	10000	LTEN (lb) (lb)	0

LSPD

