



Dual Compensated  
Porosity Log

DIGITAL LOG (785) 625-3858

API No.	15-033-21,563-00-00	
Company	Murfin Drilling Company, Inc.	
Well	Neoma 'A' No. 1-17	
Field	Wildcat	
County	Comanche	
State	Kansas	
Location	2310' FSL & 2310' FEL	
Sec: 17	Twp: 33S	Rge: 20W
Permanent Datum	Ground Level	Elevation 1828
Log Measured From	Kelly Bushing	11 Ft. Above Perm. Datum
Drilling Measured From	Kelly Bushing	
Date	09/09/2009	
Run Number	One	
Type Log	CNL / CDL	
Depth Driller	5320	
Depth Logger	5326	
Bottom Logged Interval	5305	
Top Logged Interval	4000	
Type Fluid In Hole	Chemical	
Salinity, PPM CL	4,500	
Density	9.3	
Level	Full	
Max. Rec. Temp. F	131	
Operating Rig Time	5 1/2 Hours	
Equipment -- Location	17 Hays	
Recorded By	Mike Garrison	
Witnessed By	Rocky Milford	

Other Services	DIL	Elevation
	MEL/BHCS	K.B. 1839
		D.F. 1828
		G.L. 1828

Run No	Bit	From	To	Size	Wgt.	From	To
1	12.25	00	614	8.625	24#	00	614
2	7.875	614	5320				

<<< Fold Here >>>

All interpretations are opinions based on inferences from electrical or other measurements and we cannot and do not guarantee the accuracy or correctness of any interpretation, and we shall not, except in the case of gross or willful negligence on our part, be liable or responsible for any loss, costs, damages, or expenses incurred or sustained by anyone resulting from any interpretation made by any of our officers, agents or employees. These interpretations are also subject to our general terms and conditions set out in our current Price Schedule.

Comments

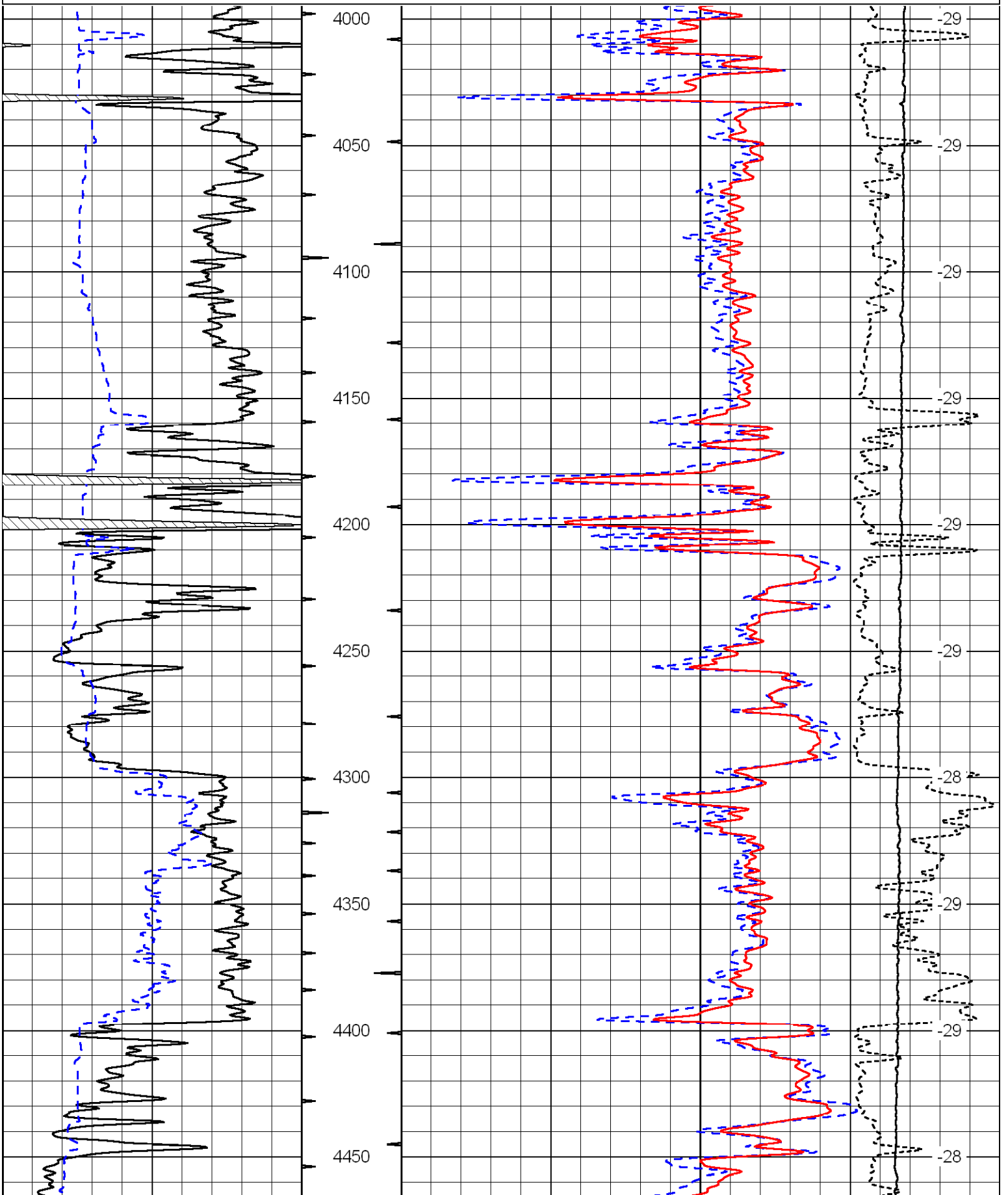
Thank you for using Log-Tech, Inc.  
(785) 625-3858

Protection, 2 1/2 West to 2 Rd, 2 South, 1/2 West, South Into

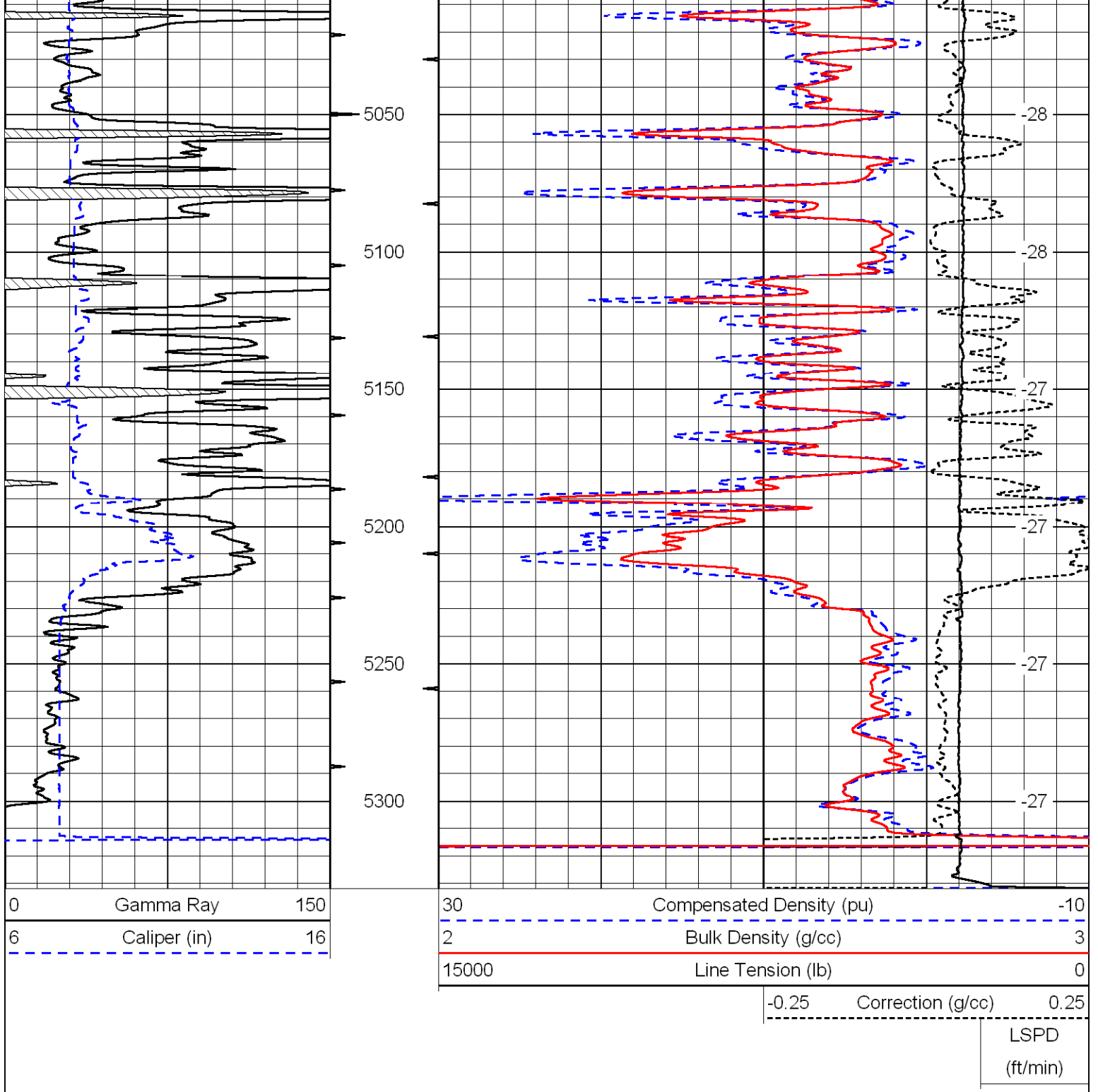
Database File: c:\warrior\data\murfin\_neoma 'a' #1-17\murf.db  
 Dataset Pathname: dil/mfnstk  
 Presentation Format: cdl  
 Dataset Creation: Wed Sep 09 16:14:07 2009  
 Charted by: Depth in Feet scaled 1:600

0	Gamma Ray	150
6	Caliper (in)	16

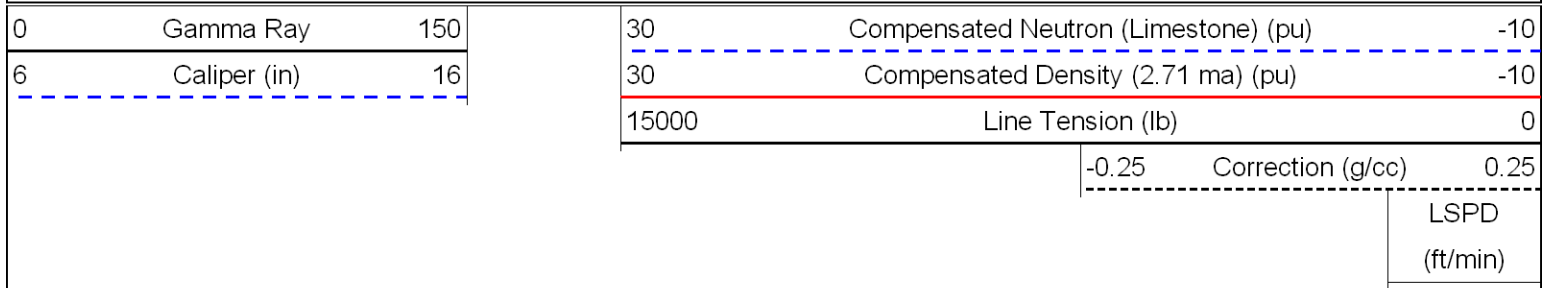
30	Compensated Density (pu)	-10
2	Bulk Density (g/cc)	3
15000	Line Tension (lb)	0
	-0.25 Correction (g/cc)	0.25
	LSPD (ft/min)	

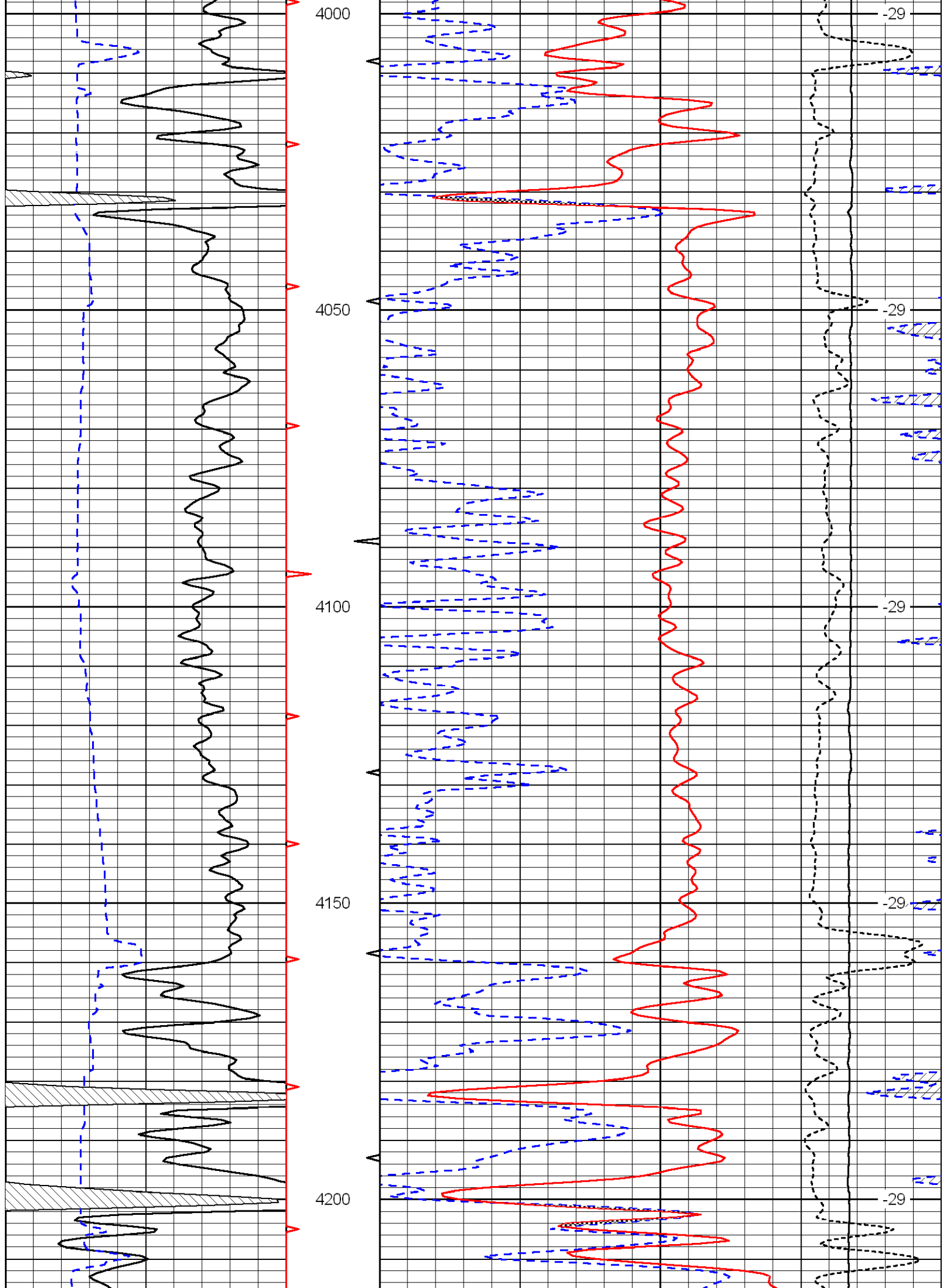


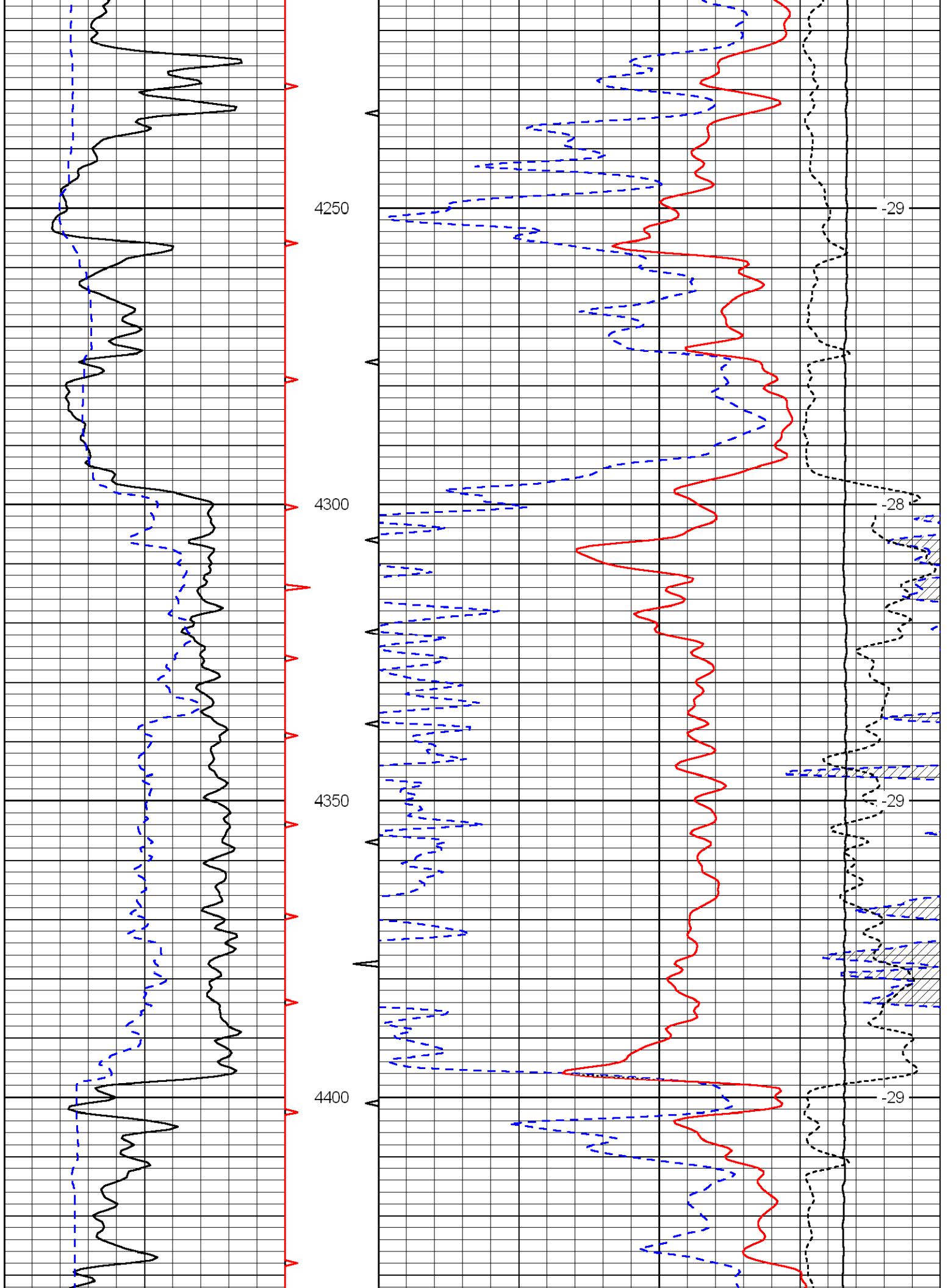


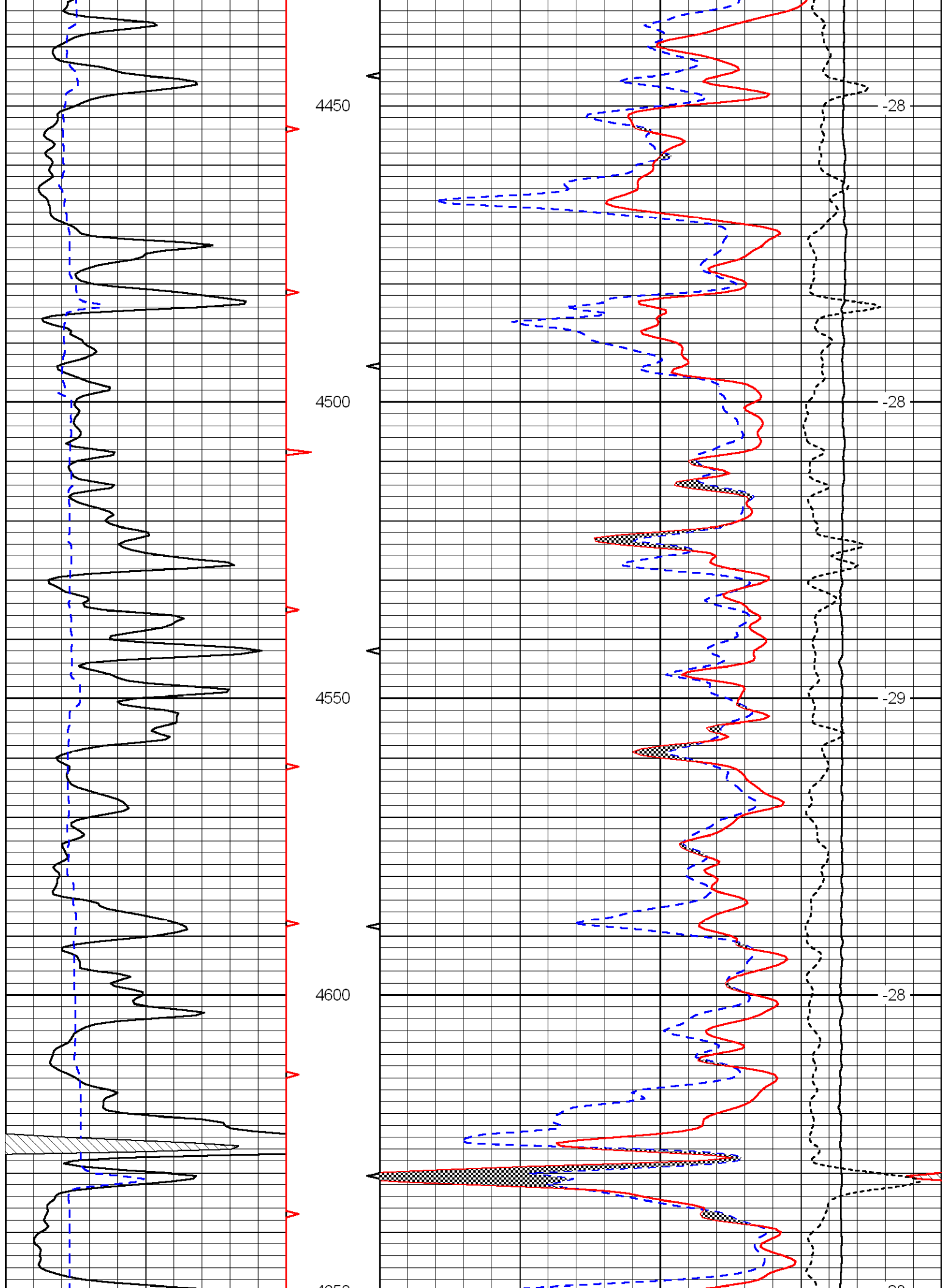


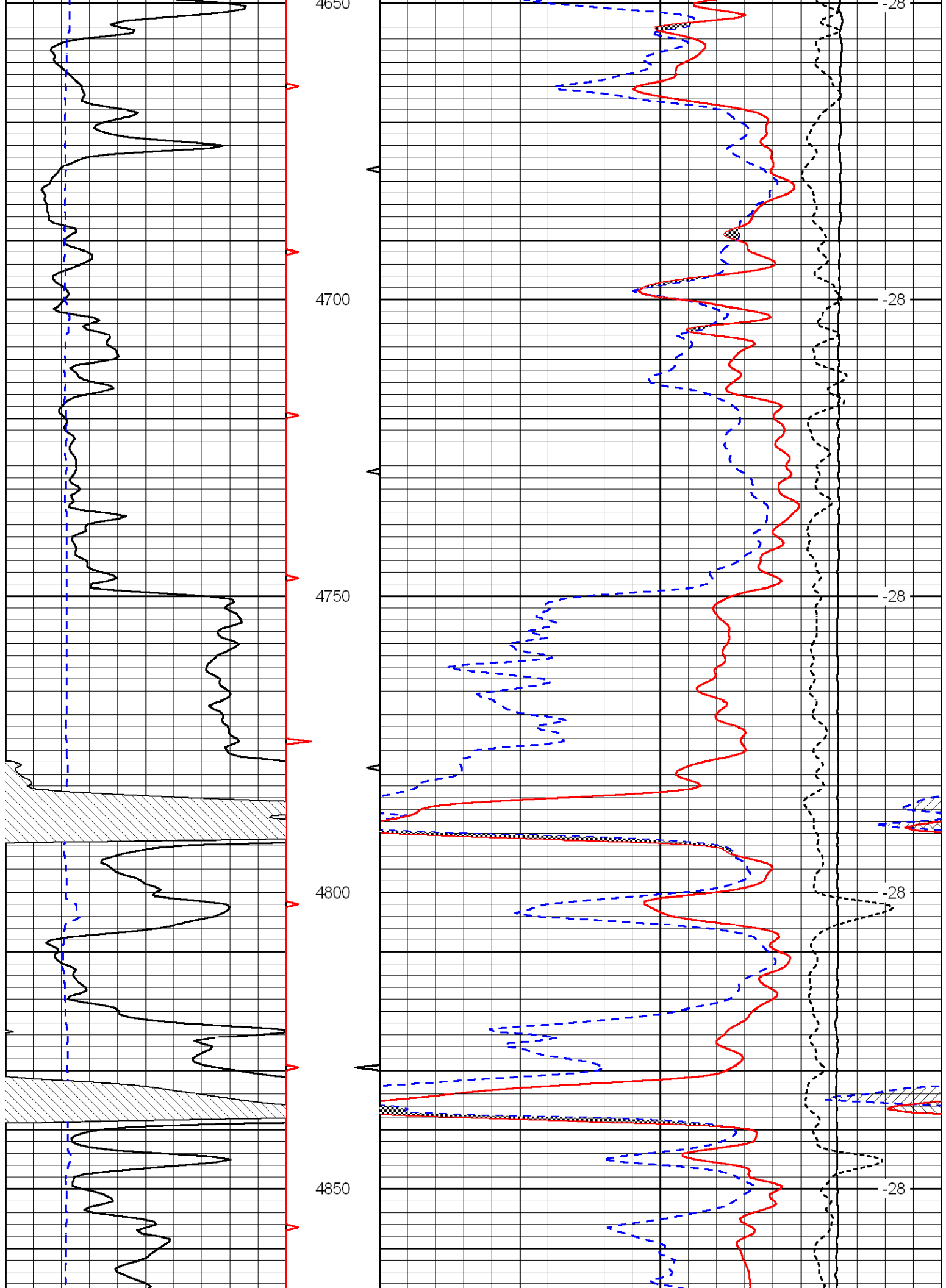
Database File: c:\warrior\data\murfin\_neoma 'a' #1-17\murf.db  
 Dataset Pathname: dil/mfnstk  
 Presentation Format: cndlspec  
 Dataset Creation: Wed Sep 09 16:14:07 2009  
 Charted by: Depth in Feet scaled 1:240

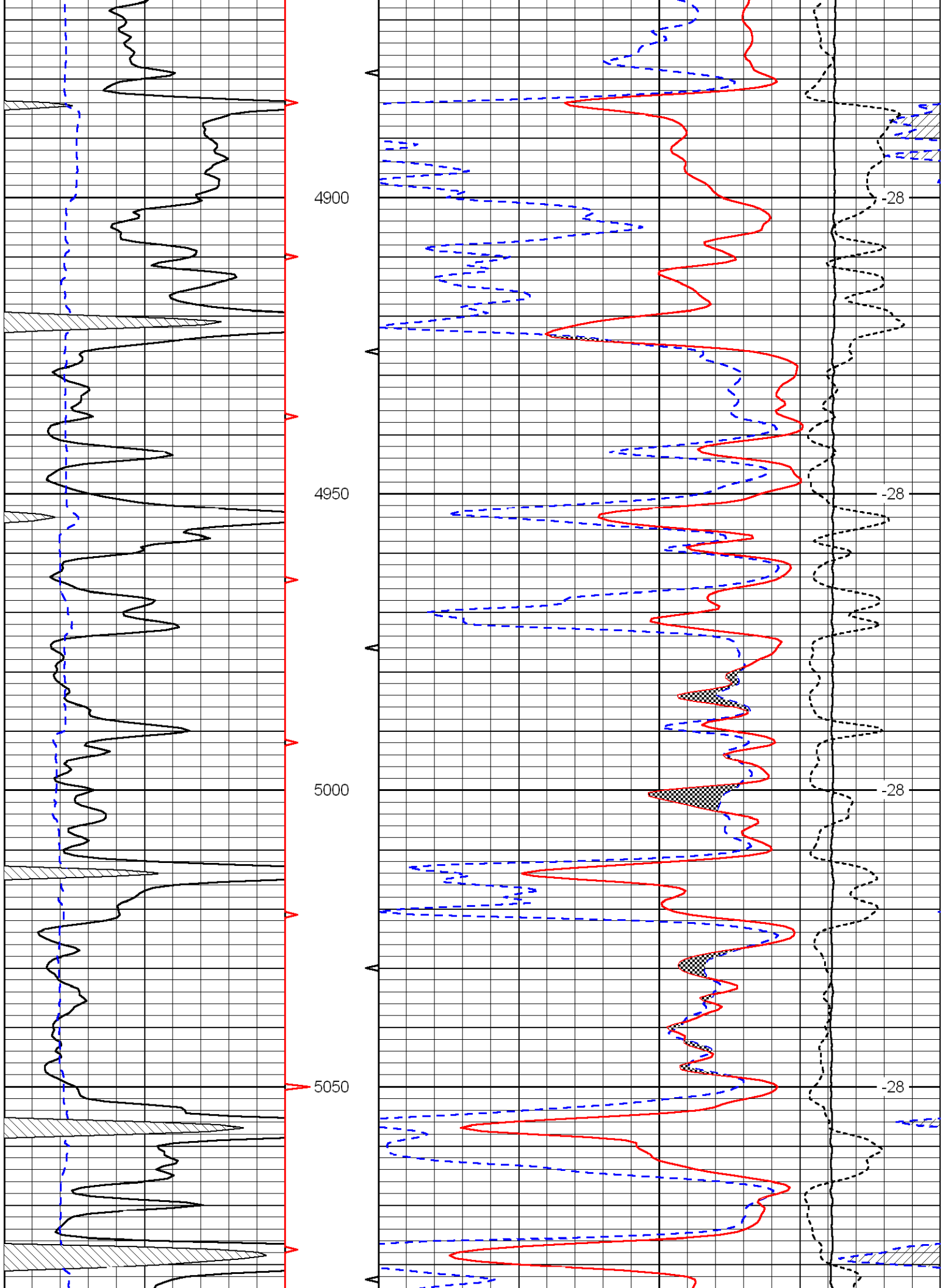


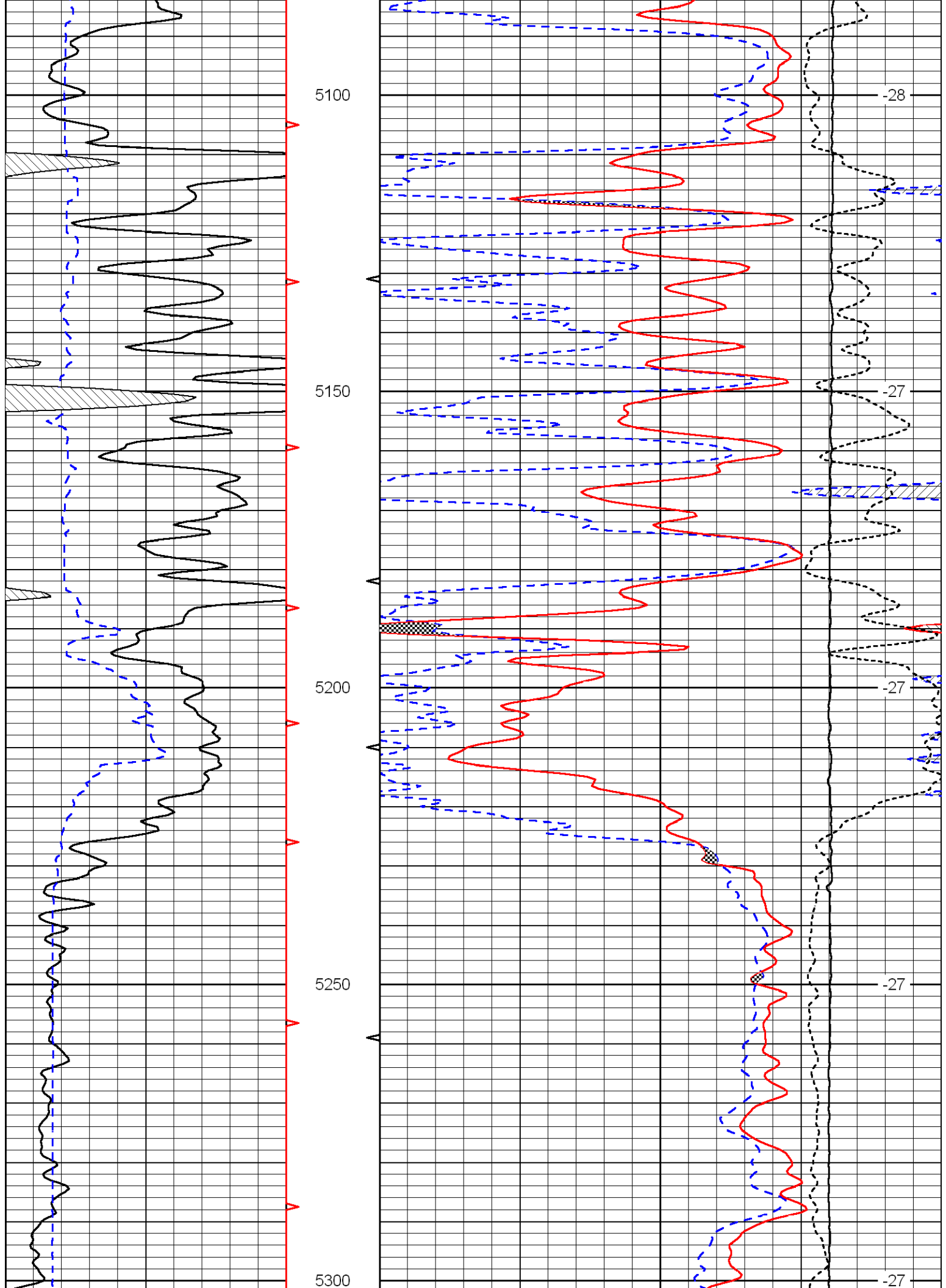


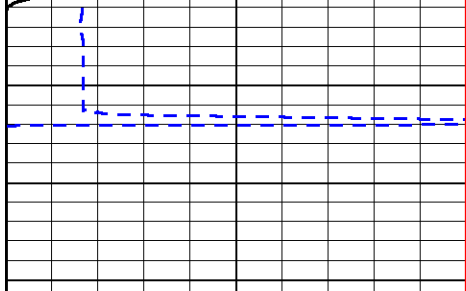




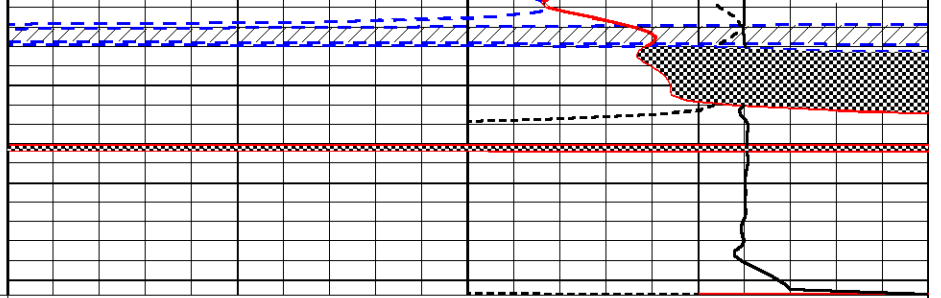








0	Gamma Ray	150
6	Caliper (in)	16



30	Compensated Neutron (Limestone) (pu)	-10
30	Compensated Density (2.71 ma) (pu)	-10
15000	Line Tension (lb)	0

-0.25	Correction (g/cc)	0.25
-------	-------------------	------

LSPD  
(ft/min)