



Microresistivity Log

DIGITAL LOG (785) 625-3858

| | | | |
|------------------------|---------------------------|-------------------------|--|
| API No. | 15-101-22,317-00-00 | | |
| Company | Bentley Oil & Gas Company | | |
| Well | MRLLC No. 1 | | |
| Field | Alamota | | |
| County | Lane | State | Kansas |
| Location | 1650' FNL & 785' FWL | | |
| Sec: 22 | Twp: 18 S | Rge: 27 W | |
| Permanent Datum | Ground Level | Elevation 2685 | Other Services CNL/CDL DIL/BHCS |
| Log Measured From | Kelly Bushing | 5 Ft. Above Perm. Datum | |
| Drilling Measured From | Frotkelly Bushing | | Elevation K.B. 2690 D.F. 2685 G.L. 2685 |

| | |
|------------------------|--------------|
| Date | 10/28/2011 |
| Run Number | Two |
| Depth Driller | 4685 |
| Depth Logger | 4687 |
| Bottom Logged Interval | 4686 |
| Top Log Interval | 3700 |
| Casing Driller | 8.625 @ 206 |
| Casing Logger | 206 |
| Bit Size | 7.875 |
| Type Fluid in Hole | Chemical |
| Salinity, ppm CL | 2300 |
| Density / Viscosity | 9.5 50 |
| pH / Fluid Loss | 8.5 7.2 |
| Source of Sample | Flowline |
| Rm @ Meas. Temp | 1.1 @ 68 |
| Rmf @ Meas. Temp | .82 @ 68 |
| Rmc @ Meas. Temp | 1.48 @ 68 |
| Source of Rmf / Rmc | Charts |
| Rm @ BHT | .60 @ 125 |
| Operating Rig Time | 5 Hours |
| Max Rec. Temp. F | 125 |
| Equipment Number | 91 |
| Location | Hays |
| Recorded By | D.Kerr |
| Witnessed By | Kent Crisler |

<<< Fold Here >>>

All interpretations are opinions based on inferences from electrical or other measurements and we cannot and do not guarantee the accuracy or correctness of any interpretation, and we shall not, except in the case of gross or willful negligence on our part, be liable or responsible for any loss, costs, damages, or expenses incurred or sustained by anyone resulting from any interpretation made by any of our officers, agents or employees. These interpretations are also subject to our general terms and conditions set out in our current Price Schedule.

Comments

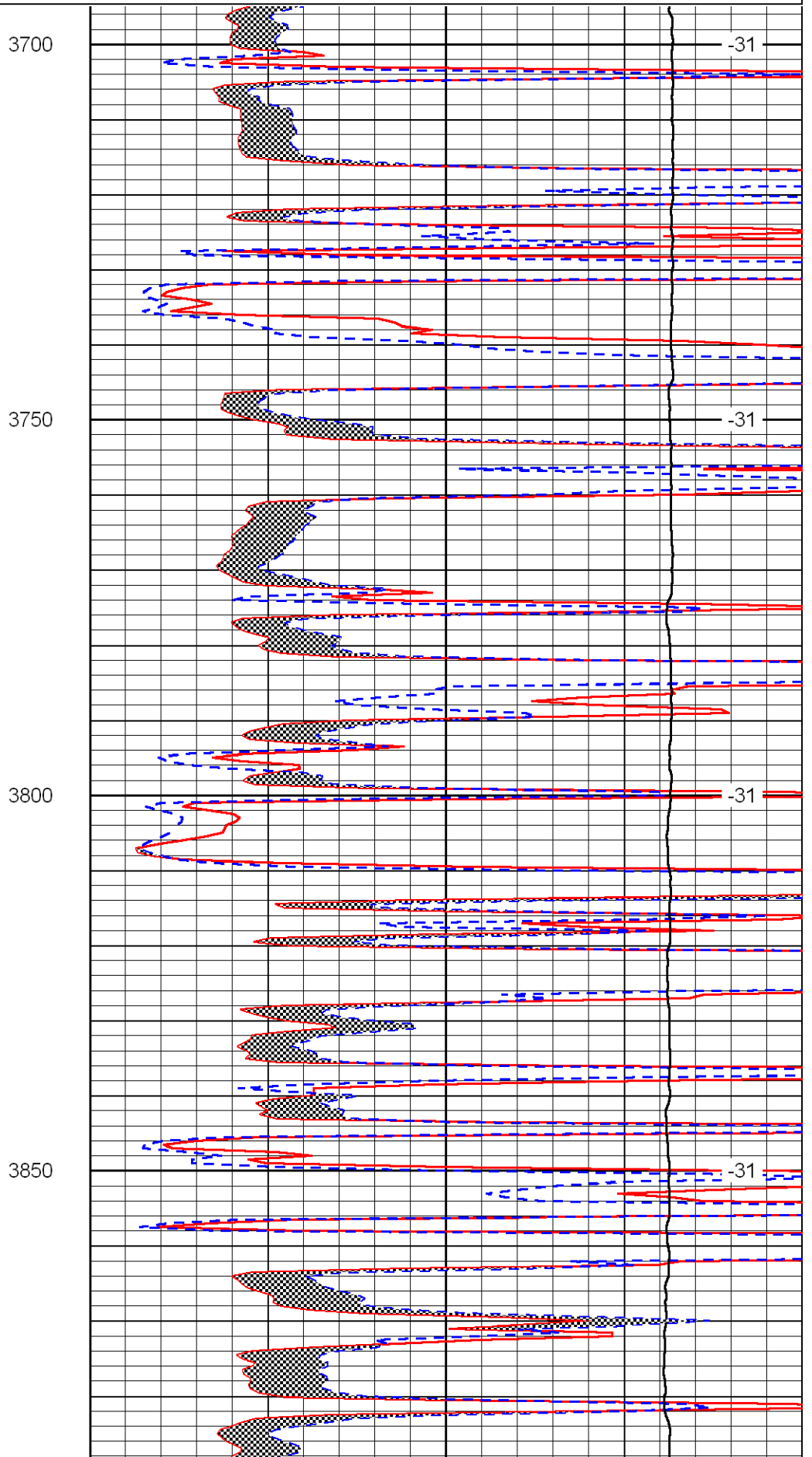
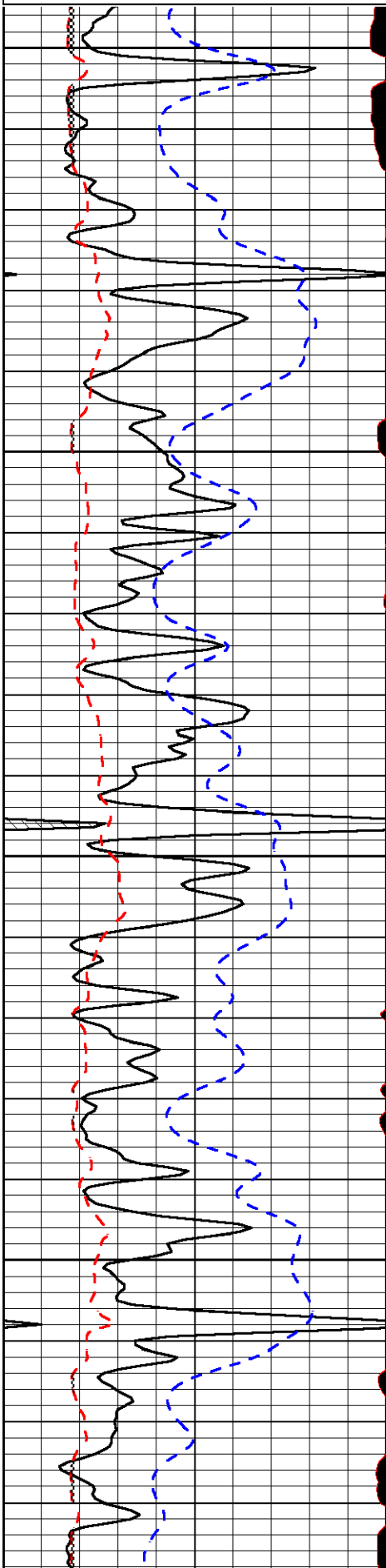
Thank you for using Log-Tech, Inc.
(785) 625-3858

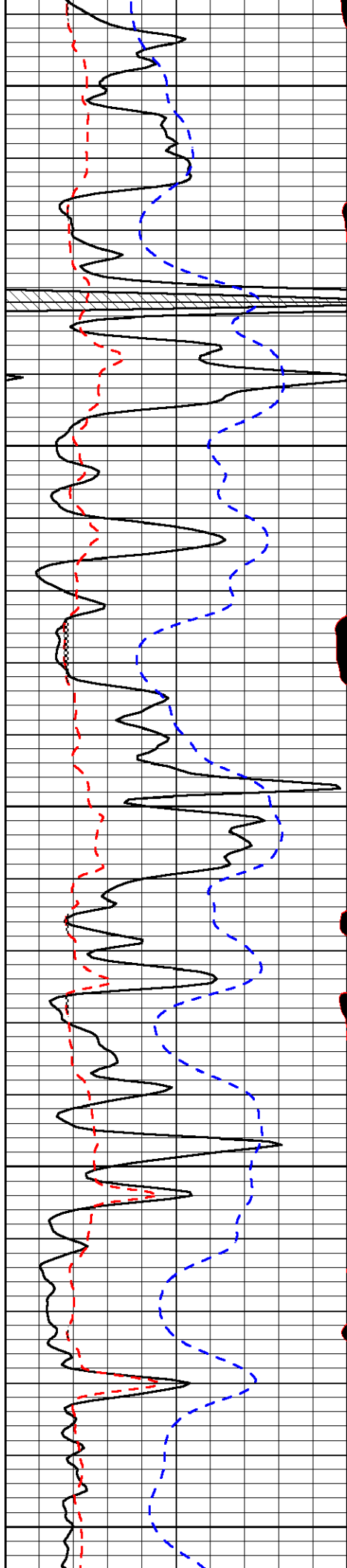
Alamota KS, 2 North,
1/4 East, South Into

Database File: bentleyoil_mrllc_102811hd.db
 Dataset Pathname: DIL/bntstk
 Presentation Format: micro
 Dataset Creation: Fri Oct 28 17:55:24 2011
 Charted by: Depth in Feet scaled 1:240

| | | |
|-------|-----------------|-------|
| 0 | Gamma Ray | 150 |
| 6 | MCAL (GAPI) | 16 |
| 2.875 | Mud Cake (GAPI) | 7.875 |
| -200 | SP | 0 |

| | | |
|-------|---------------------|------|
| 0 | Micro Inverse 1 X 1 | 40 |
| 0 | Micro Normal 2" | 40 |
| 10000 | Line Weight | 0 |
| | | LSPD |





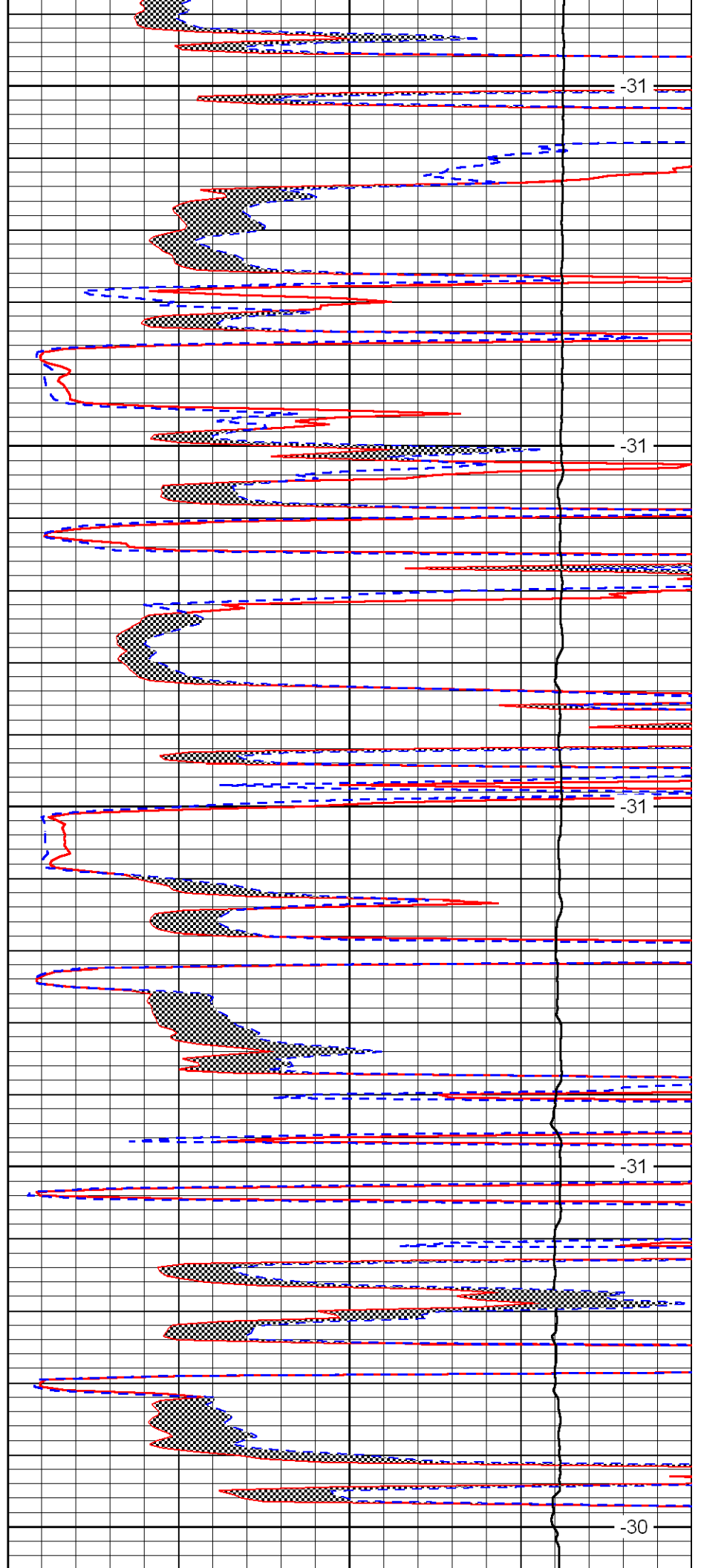
3900

3950

4000

4050

4100



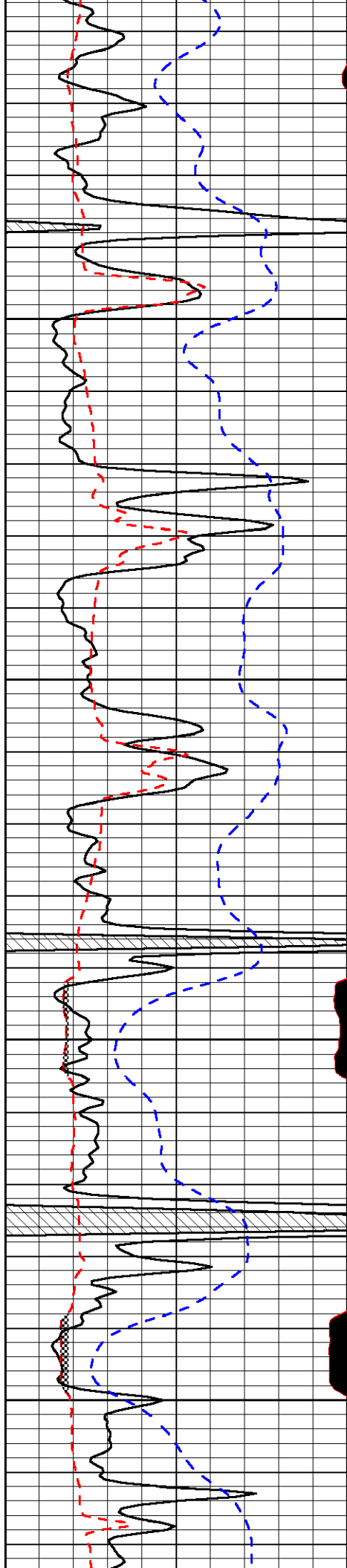
-31

-31

-31

-31

-30

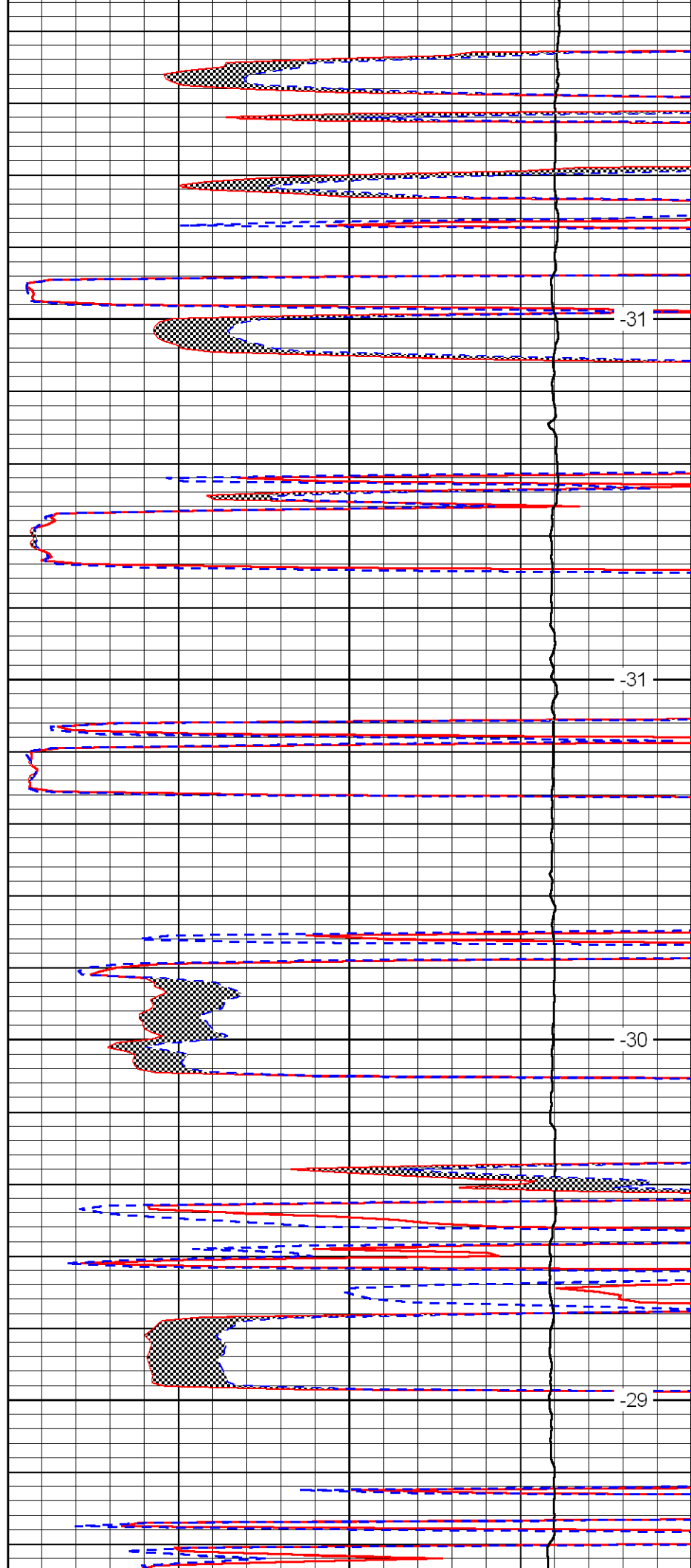


4150

4200

4250

4300

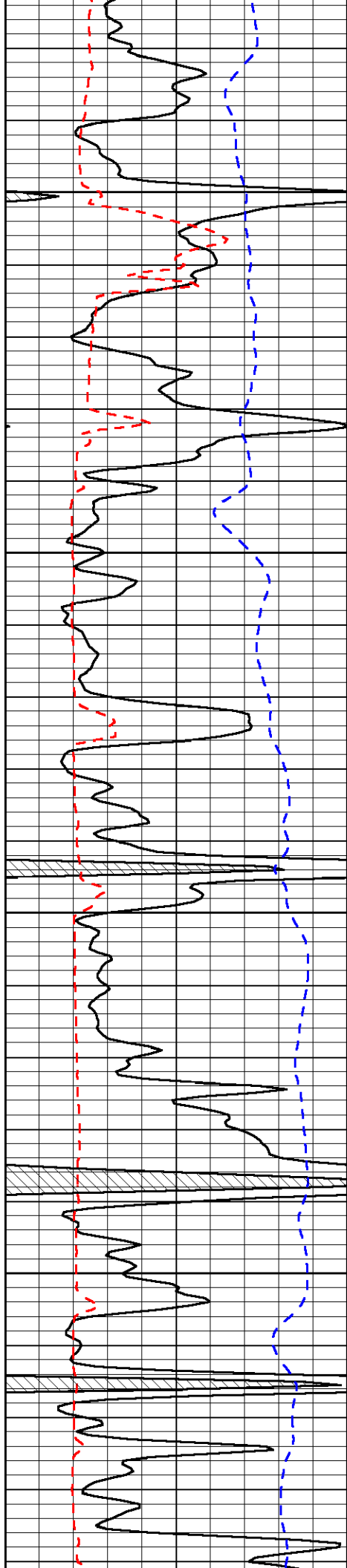


-31

-31

-30

-29

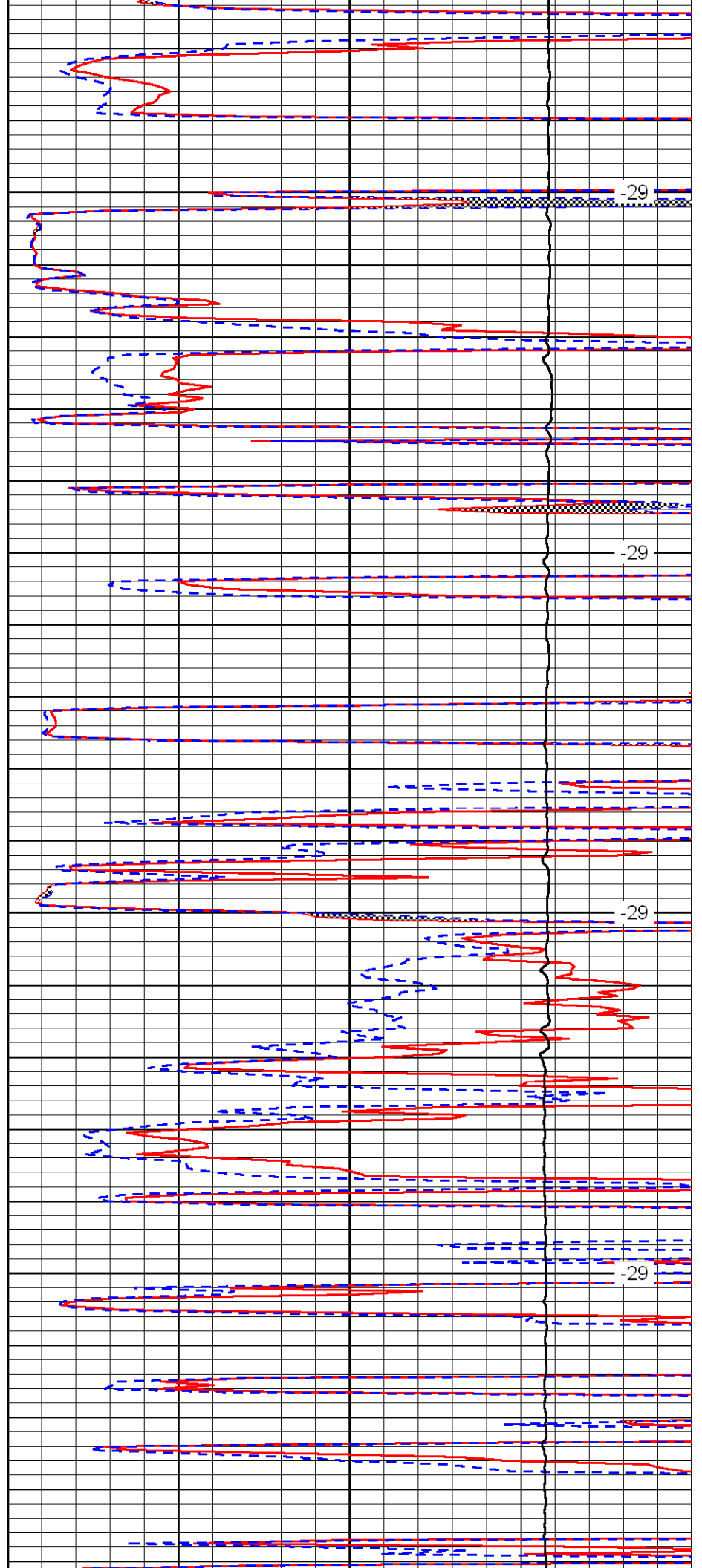


4350

4400

4450

4500

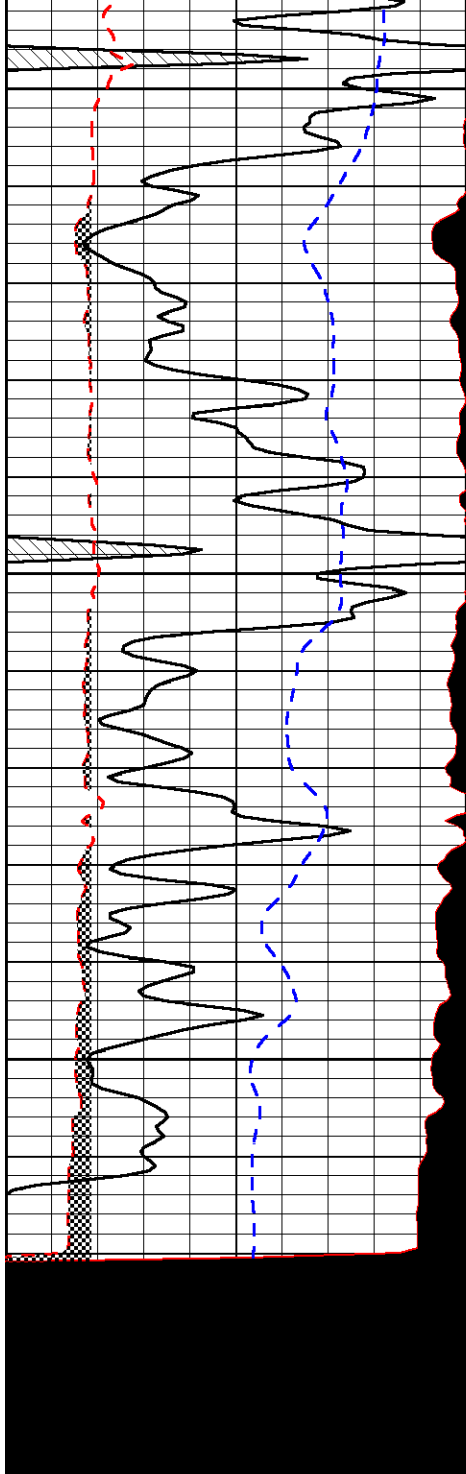


-29

-29

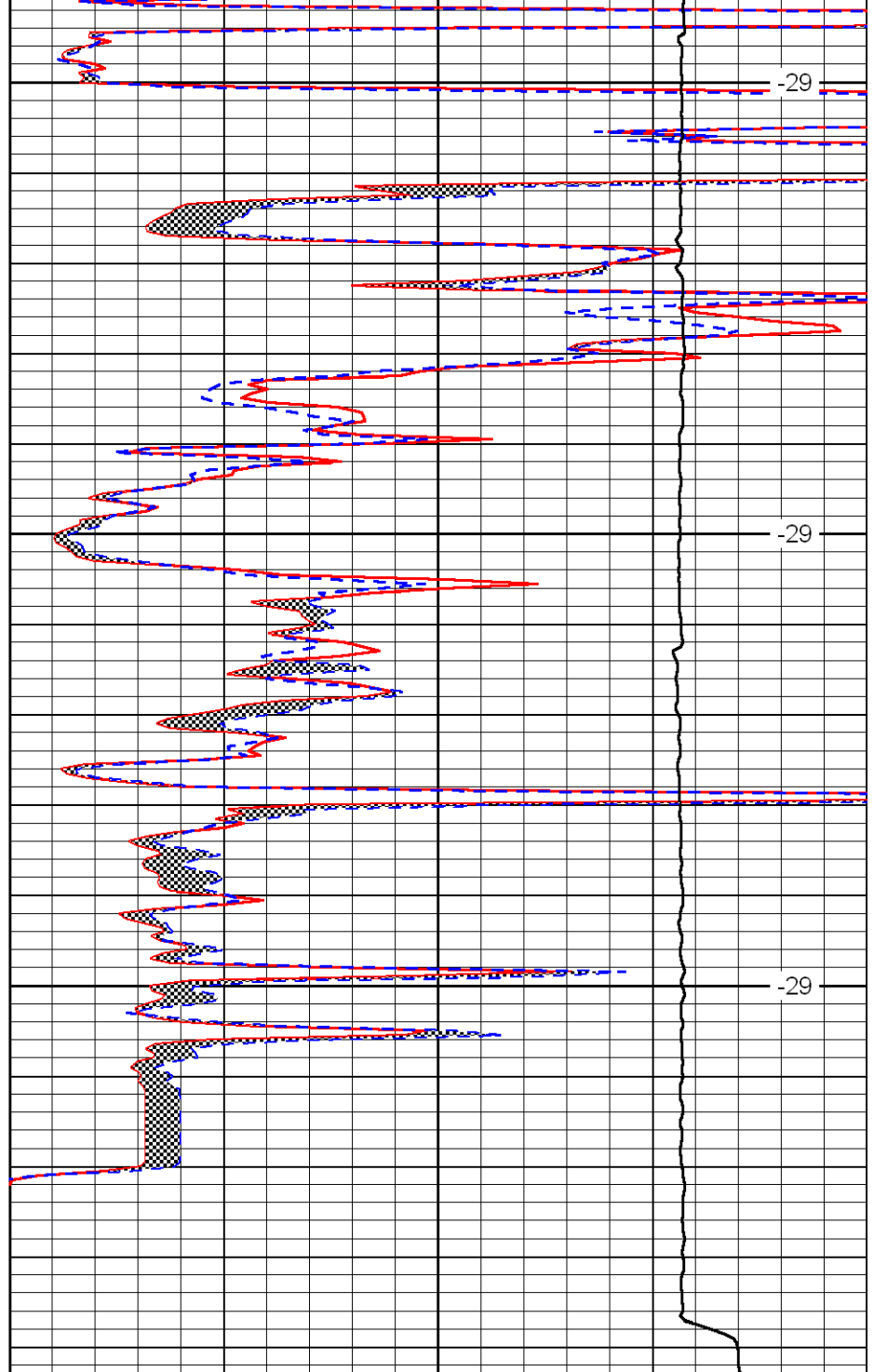
-29

-29



| | | |
|-------|-----------------|-------|
| 0 | Gamma Ray | 150 |
| 6 | MCAL (GAPI) | 16 |
| 2.875 | Mud Cake (GAPI) | 7.875 |
| -200 | SP | 0 |

4550
4600
4650



| | | |
|-------|---------------------|----|
| 0 | Micro Inverse 1 X 1 | 40 |
| 0 | Micro Normal 2'' | 40 |
| 10000 | Line Weight | 0 |

LSPD