



Dual Compensated  
Porosity Log

DIGITAL LOG (785) 625-3858

API No. 15-101-22,317-00-00

Company Bentley Oil & Gas Company  
Well MRLLC No. 1  
Field Alamota  
County Lane  
State Kansas

Location 1650' FNL & 785' FWL

Sec: 22 Twp: 18 S Rge: 27 W

Other Services  
DIL  
MEL/BHCS

Permanent Datum Ground Level Elevation 2685  
Log Measured From Kelly Bushing 5 Ft. Above Perm. Datum  
Drilling Measured From Kelly Bushing

Elevation  
K.B. 2690  
D.F.  
G.L. 2685

Date 10/28/2011

Run Number One

Type Log CNL / CDL

Depth Driller 4685

Depth Logger 4687

Bottom Logged Interval 4666

Top Logged Interval 3700

Type Fluid In Hole Chemical

Salinity, PPM CL 2300

Density 9.5

Level Full

Max. Rec. Temp. F 125

Operating Rig Time 5 Hours

Equipment -- Location 91 Hays

Recorded By D.Kerr

Witnessed By Kent Crisler

Borehole Record				Casing Record			
Run No	Bit	From	To	Size	Wgt.	From	To
One	12.25	00	206	8.625	23#	00	206
Two	7.875	206	TD				

<<< Fold Here >>>

All interpretations are opinions based on inferences from electrical or other measurements and we cannot and do not guarantee the accuracy or correctness of any interpretation, and we shall not, except in the case of gross or willful negligence on our part, be liable or responsible for any loss, costs, damages, or expenses incurred or sustained by anyone resulting from any interpretation made by any of our officers, agents or employees. These interpretations are also subject to our general terms and conditions set out in our current Price Schedule.

Comments

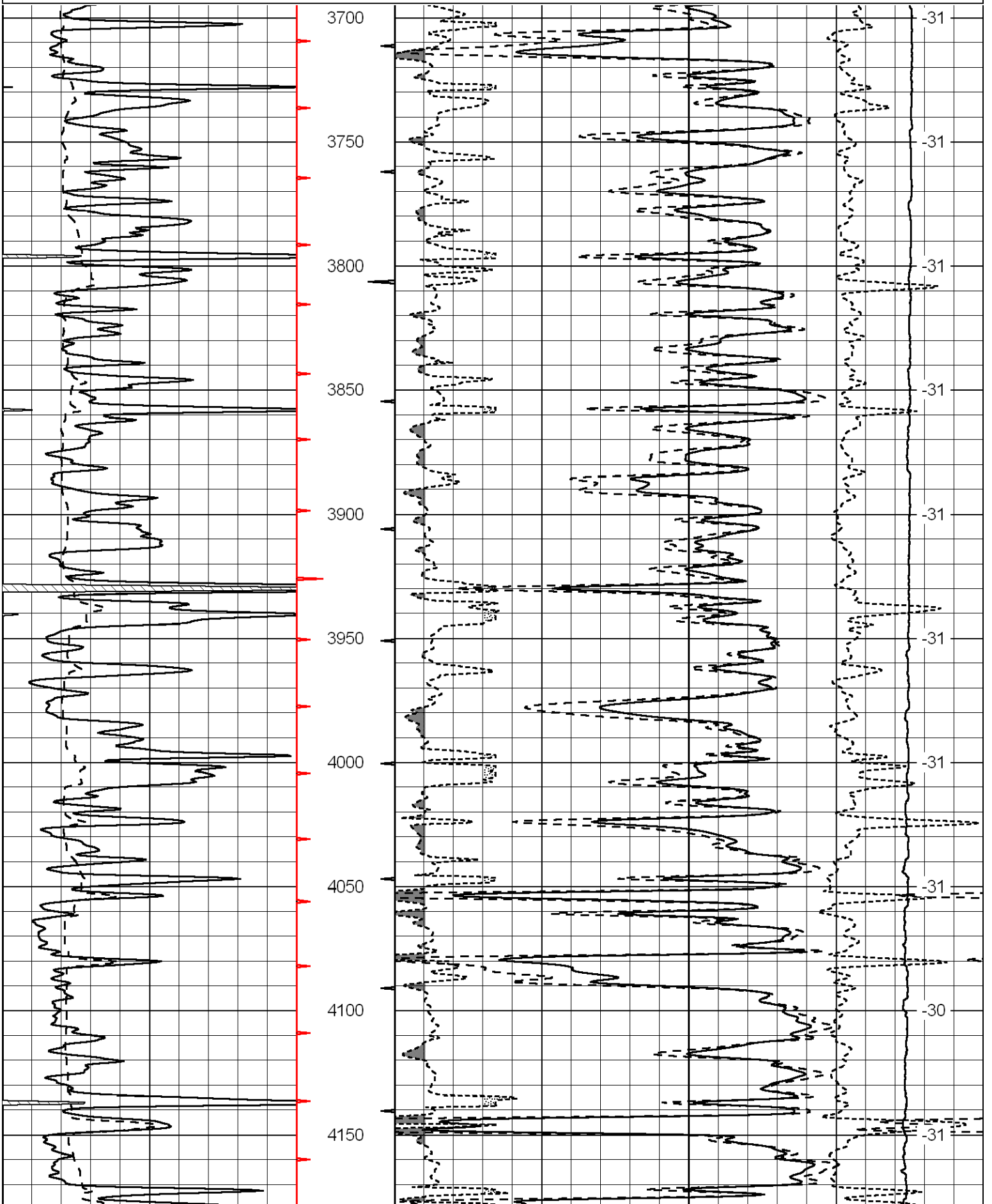
Thank you for using Log-Tech, Inc.  
(785) 625-3858

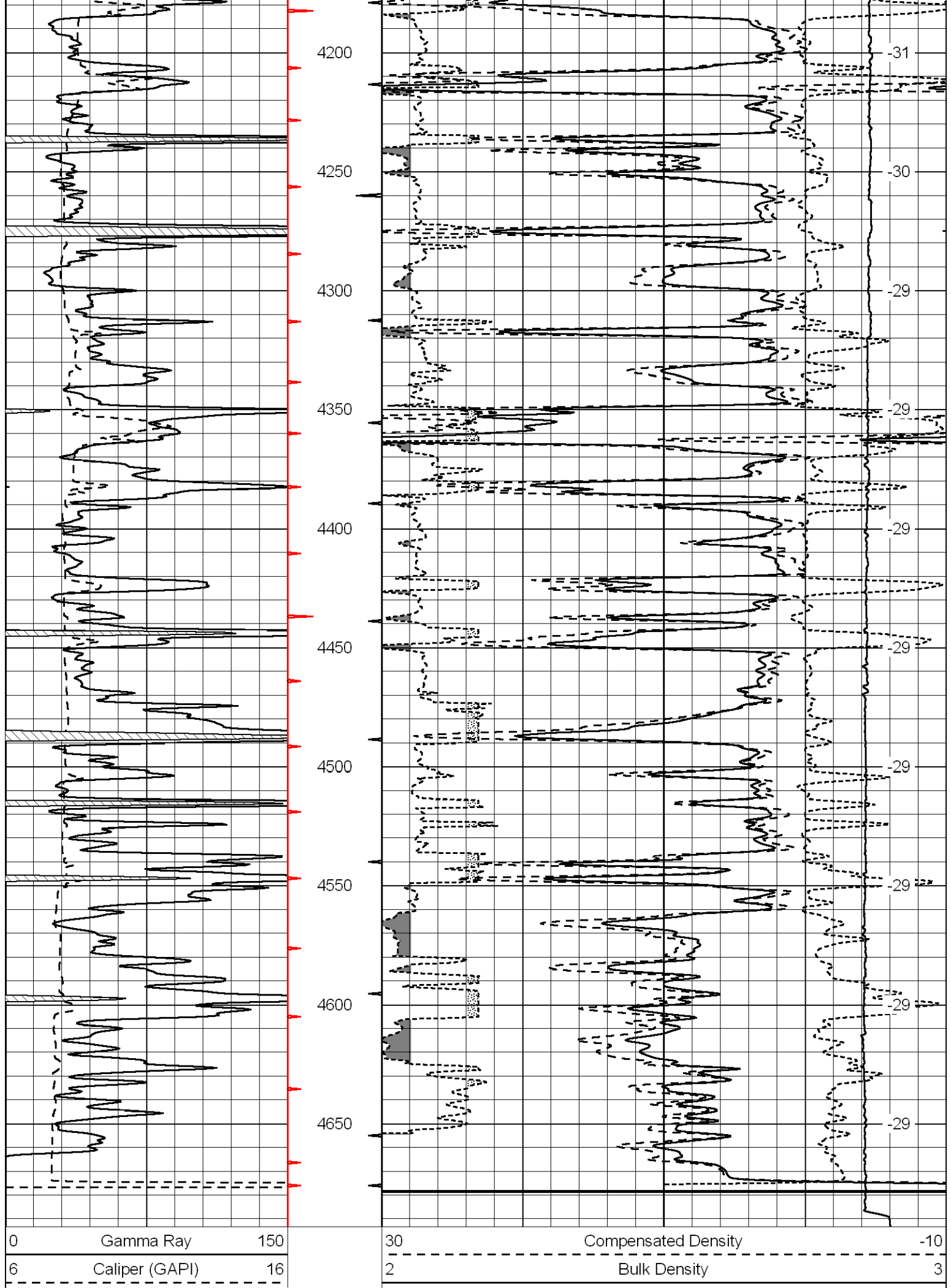
Alaomota KS, 2 North,  
1/4 East, South Into

Database File: bentleyoil\_mrllc\_102811hd.db  
Dataset Pathname: DIL/bntstk  
Presentation Format: cdl  
Dataset Creation: Fri Oct 28 17:55:24 2011  
Charted by: Depth in Feet scaled 1:600

0	Gamma Ray	150
6	Caliper (GAPI)	16

30	Compensated Density			-10	
2	Bulk Density			3	
15000	Line Tension			0	
2.625	DGA	3.425	-0.25	Correction	0.25
				LSPD	





15000		Line Tension	0
2.625	DGA	3.425	-0.25
			Correction
			0.25
			LSPD

Database File: bentleyoil\_mrlc\_102811hd.db  
 Dataset Pathname: DIL/bntstk  
 Presentation Format: cndlspec  
 Dataset Creation: Fri Oct 28 17:55:24 2011  
 Charted by: Depth in Feet scaled 1:240

0	Gamma Ray	150	30	CNLS	-10
6	Caliper (GAPI)	16	30	Compensated Density (2.71 ma)	-10
			2.625	DGA	3.425
			-0.25	Correction	0.25
			10000	Line Tension	0

