



Dual Induction Log

DIGITAL LOG (785) 625-3858

API No.	15-101-22,317-00-00	
Company	Bentley Oil & Gas Company	
Well	MRLLC No. 1	
Field	Alamota	
County	Lane	State
		Kansas
Location	1650' FNL & 785' FWL	
Sec: 22	Twp: 18 S	Rge: 27 W
Permanent Datum	Ground Level	Elevation 2685
Log Measured From	Kelly Bushing	5 Ft. Above Perm. Datum
Drilling Measured From	Kelly Bushing	
		Other Services CNL/CDL MEL/BHCS
		Elevation K.B. 2690 D.F. 2685 G.L. 2685

Date	10/28/2011
Run Number	One
Depth Driller	4685
Depth Logger	4687
Bottom Logged Interval	4686
Top Log Interval	200
Casing Driller	8.625 @ 206
Casing Logger	206
Bit Size	7.875
Type Fluid in Hole	Chemical
Salinity, ppm CL	2300
Density / Viscosity	9.5 50
pH / Fluid Loss	8.5 7.2
Source of Sample	Flowline
Rm @ Meas. Temp	1.1 @ 68
Rmf @ Meas. Temp	.82 @ 68
Rmc @ Meas. Temp	1.48 @ 68
Source of Rmf / Rmc	Charts
Rm @ BHT	.60 @ 125
Operating Rig Time	5 Hours
Max Rec. Temp. F	125
Equipment Number	91
Location	Hays
Recorded By	D.Kerr
Witnessed By	Kent Crisler

<<< Fold Here >>>

All interpretations are opinions based on inferences from electrical or other measurements and we cannot and do not guarantee the accuracy or correctness of any interpretation, and we shall not, except in the case of gross or willful negligence on our part, be liable or responsible for any loss, costs, damages, or expenses incurred or sustained by anyone resulting from any interpretation made by any of our officers, agents or employees. These interpretations are also subject to our general terms and conditions set out in our current Price Schedule.

Comments

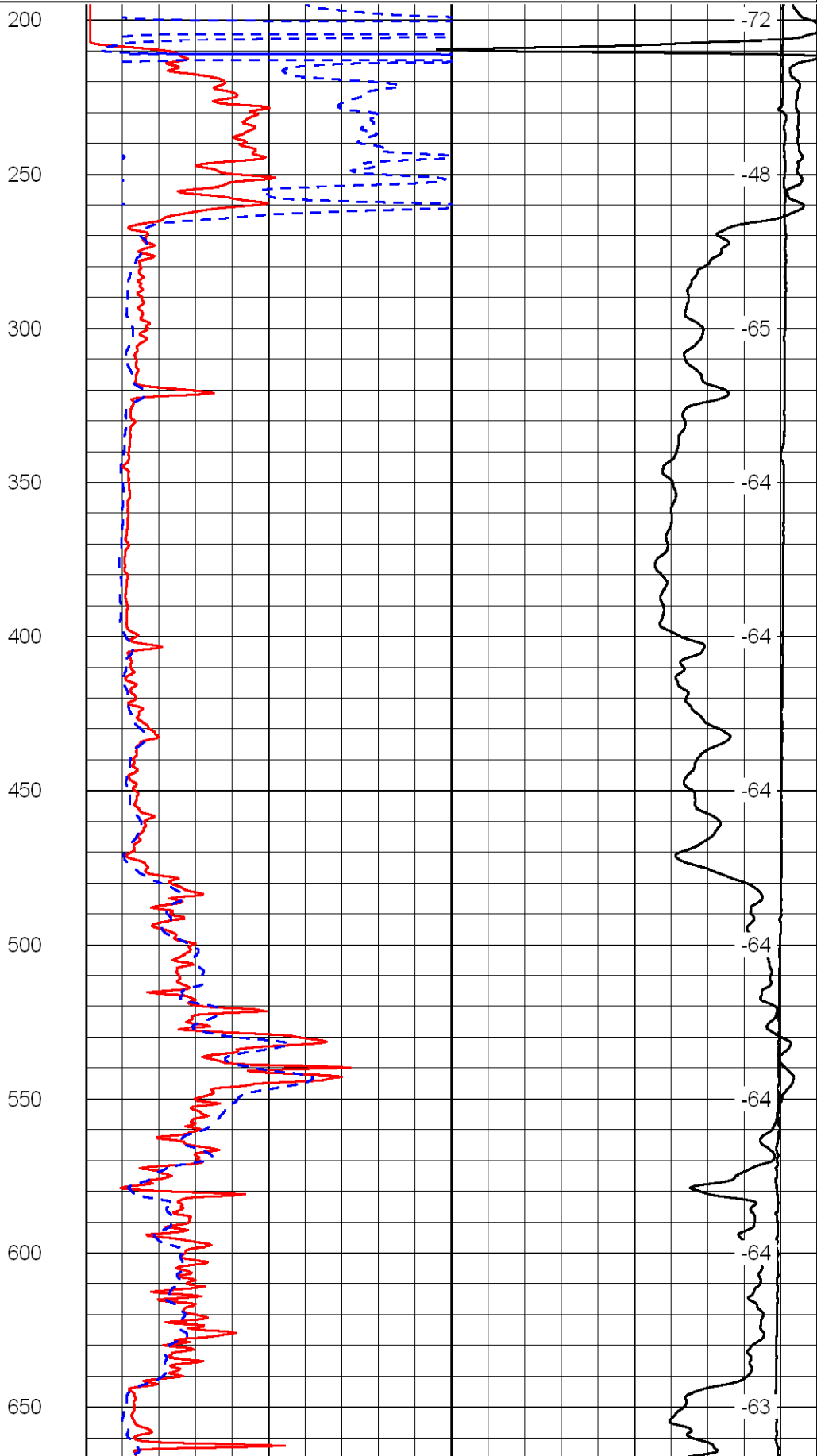
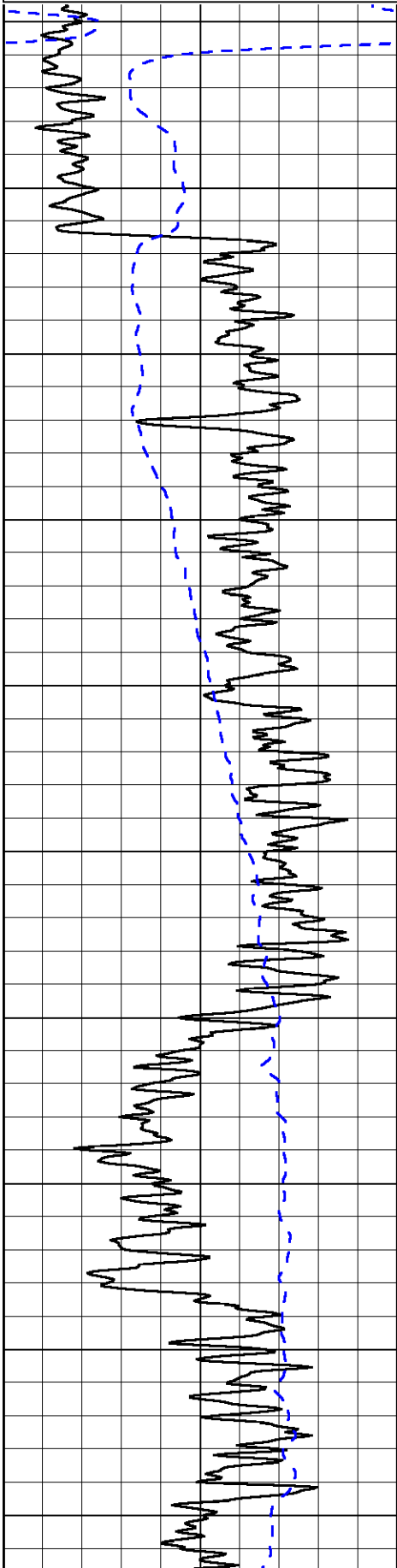
Thank you for using Log-Tech, Inc.
 (785) 625-3858
 Alaomota KS, 2 North,
 1/4 East, South Into

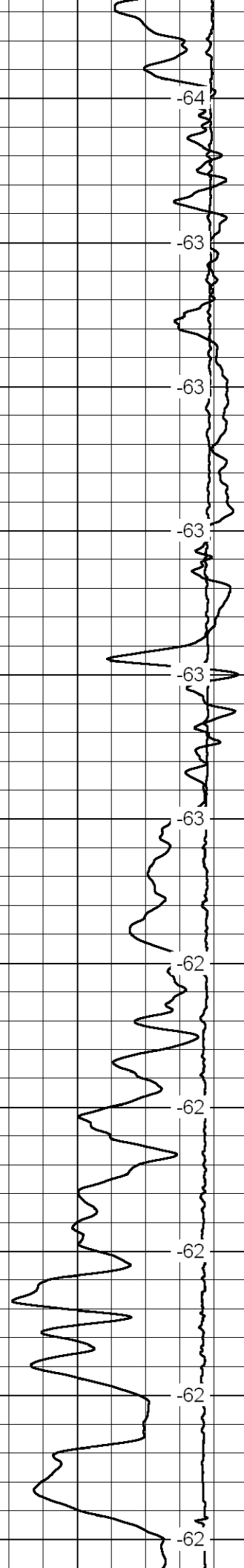
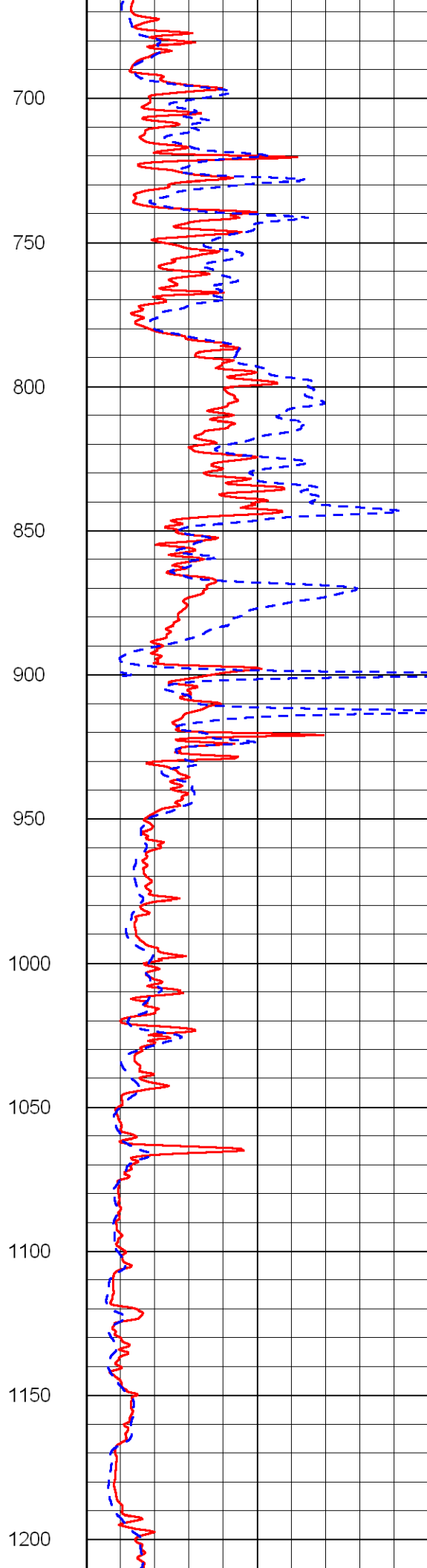
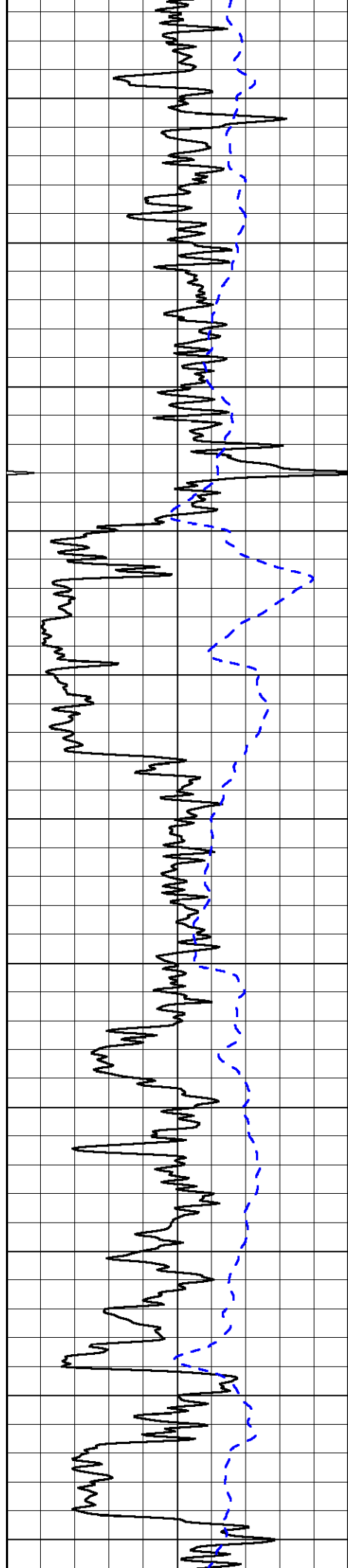
Database File: bentleyoil_mrllc_102811hd.db
 Dataset Pathname: DIL/bntstk
 Presentation Format: dil2in
 Dataset Creation: Fri Oct 28 17:55:24 2011
 Charted by: Depth in Feet scaled 1:600

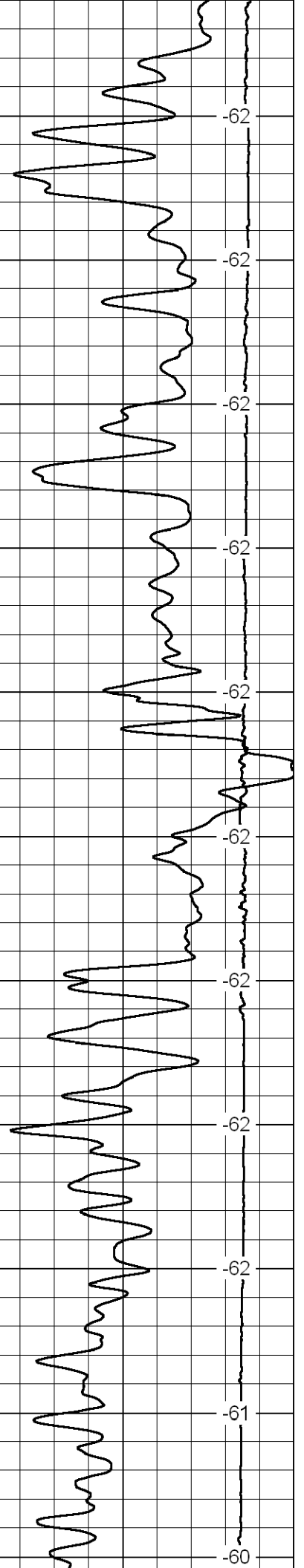
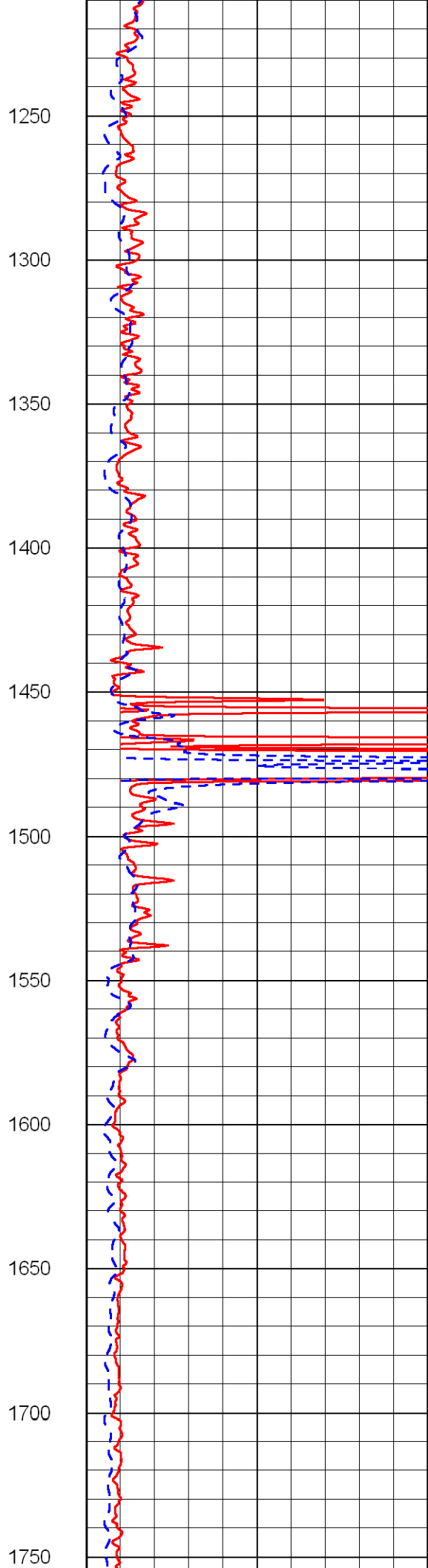
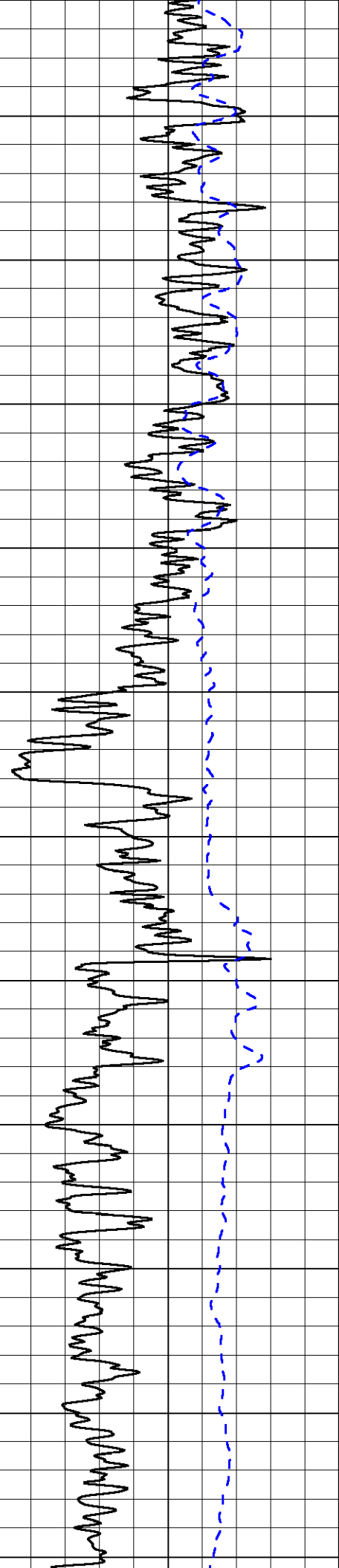
0 Gamma Ray 150
-200 SP 0

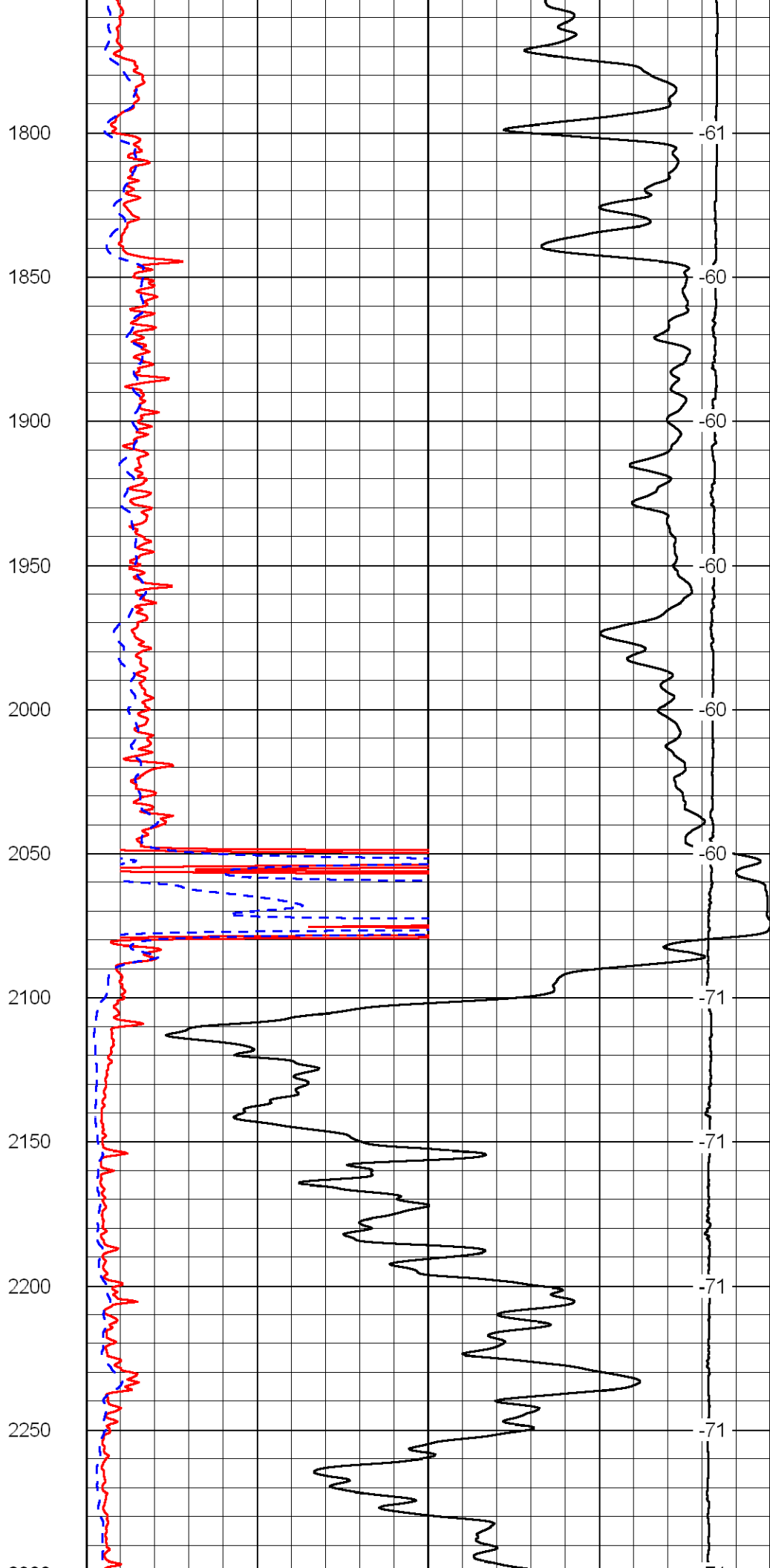
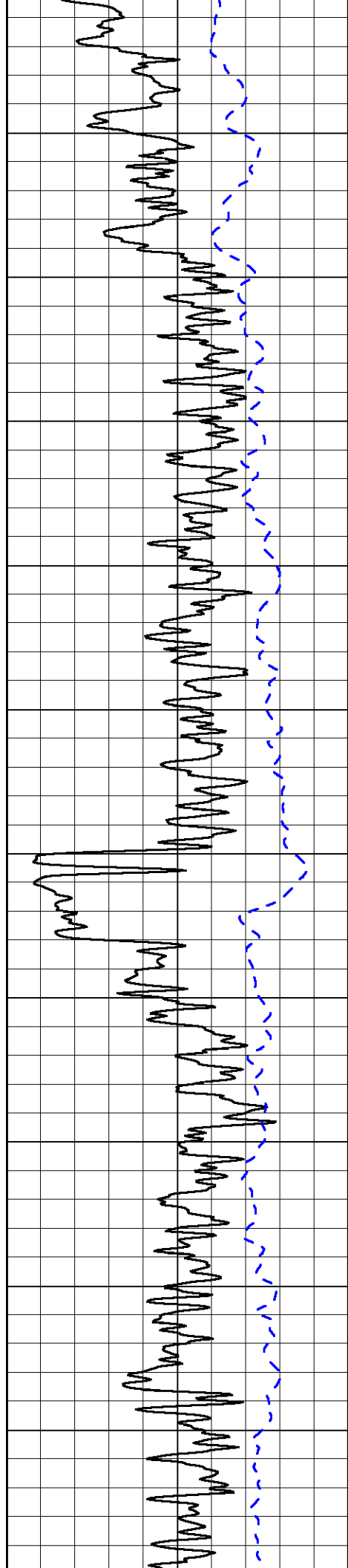
0 Shallow Resistivity 50
0 Deep Resistivity 50
1000 Conductivity 0
15000 Line Tension 0
50 Shallow Resistivity 500
50 Deep Resistivity 500

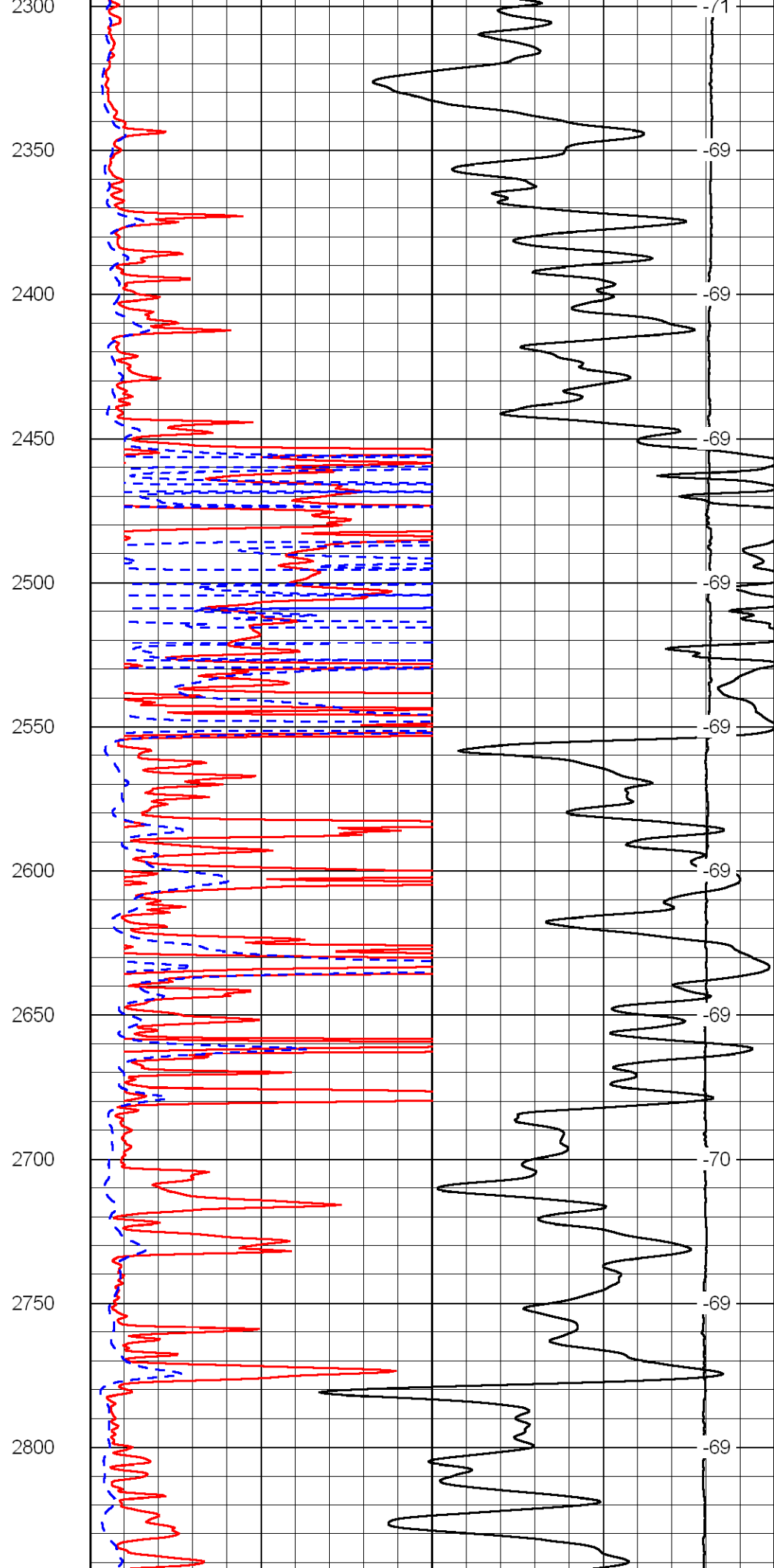
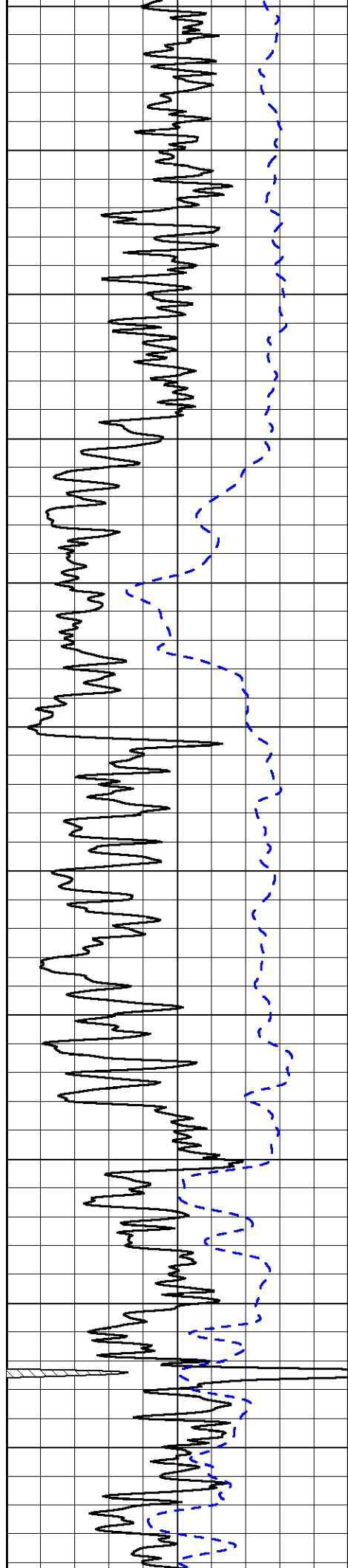
LSPD

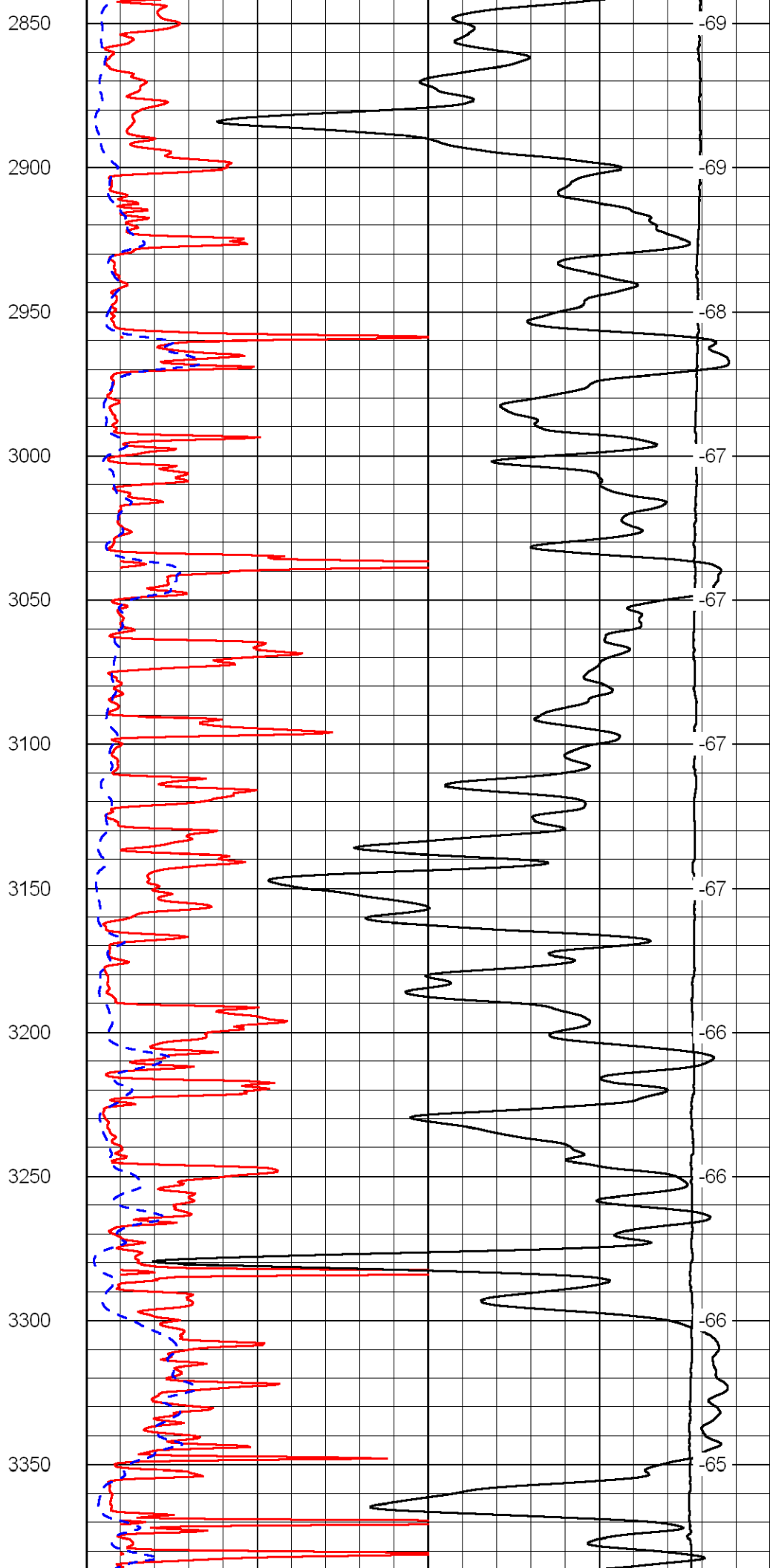
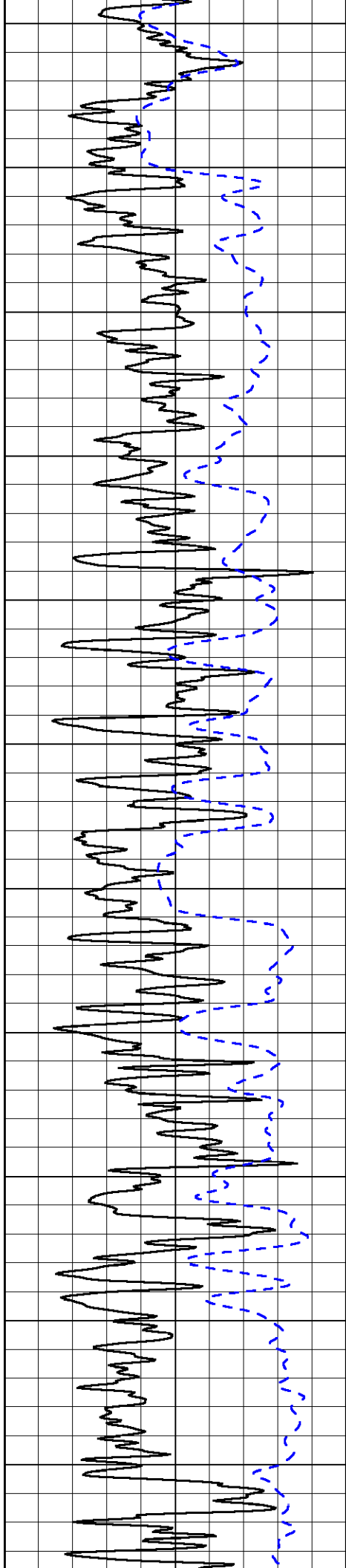




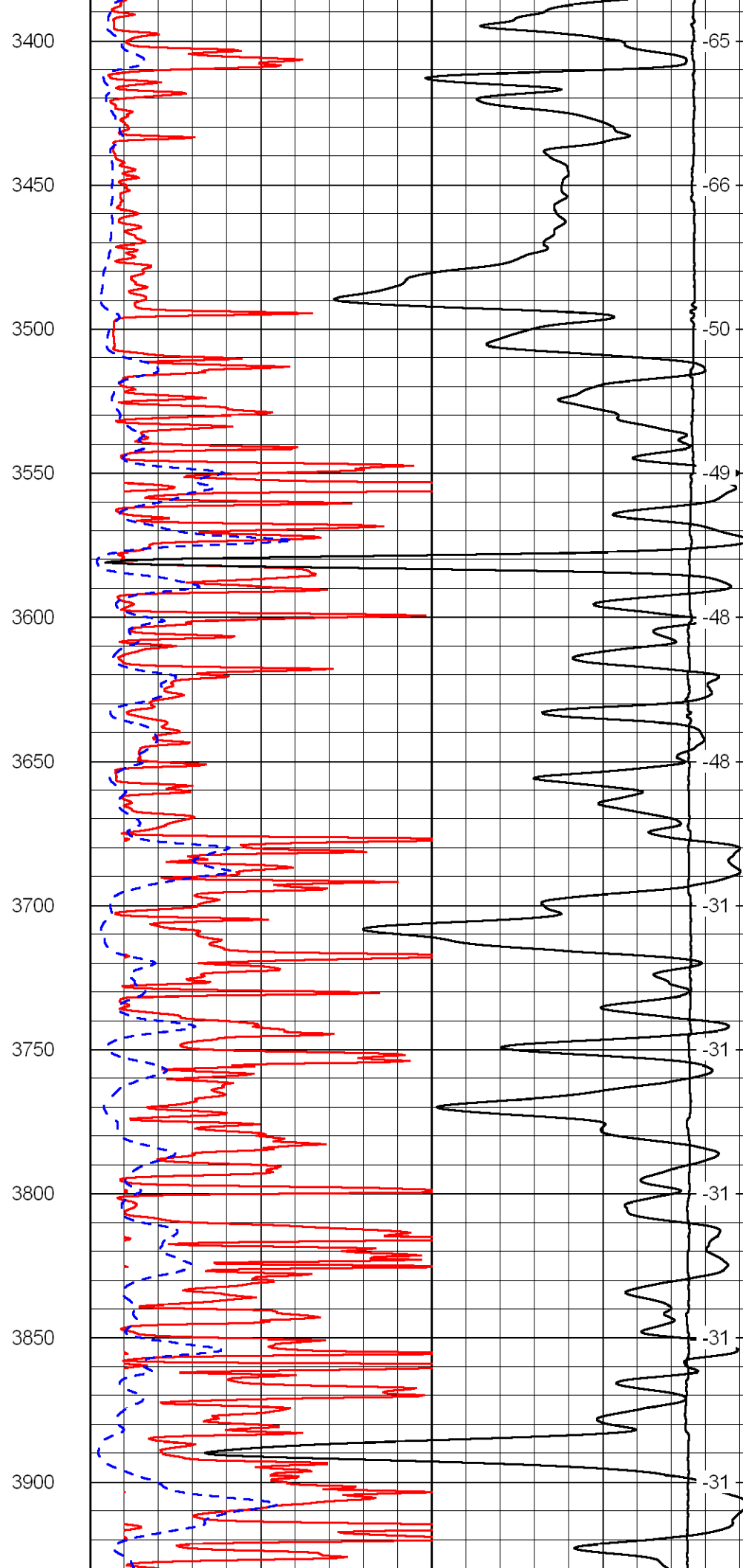
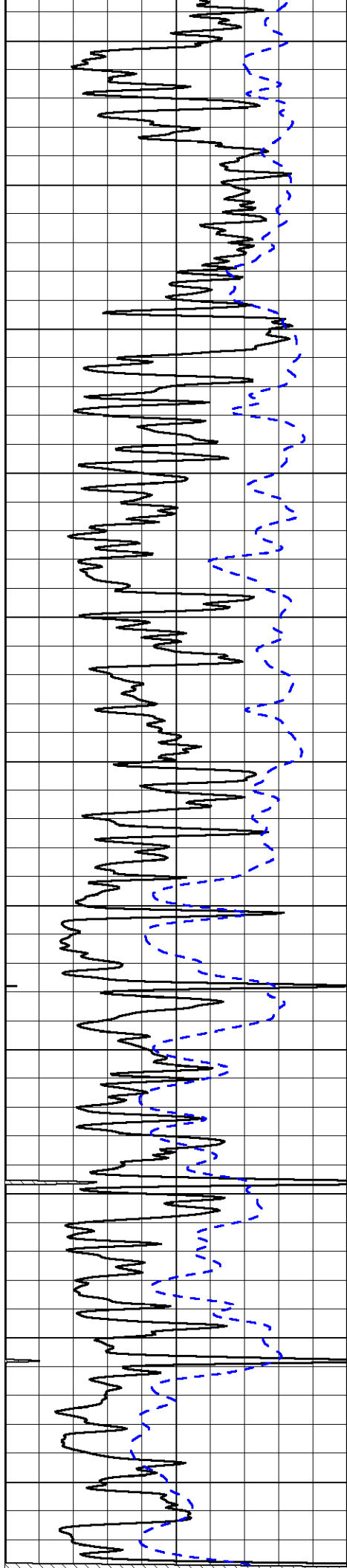


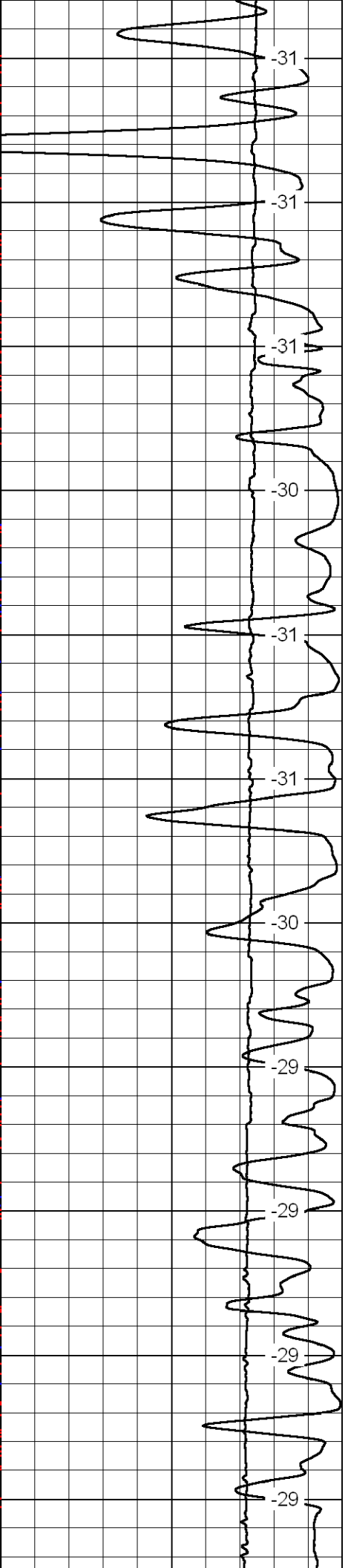
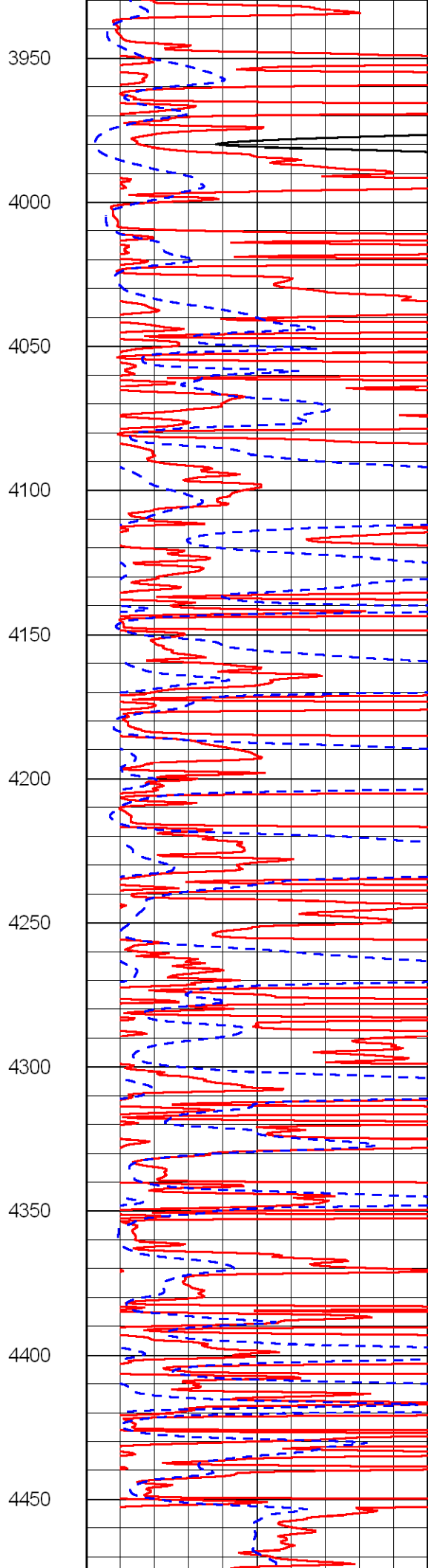
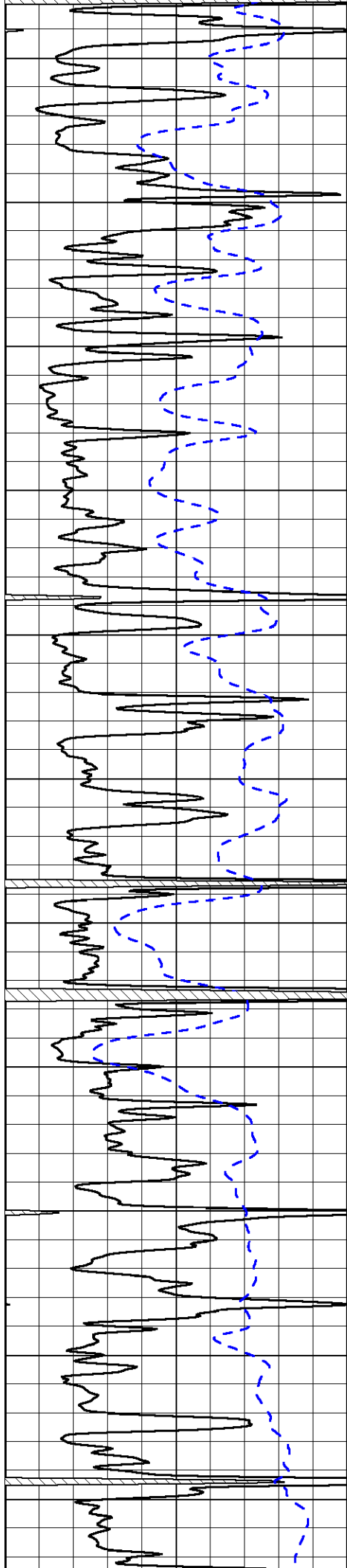


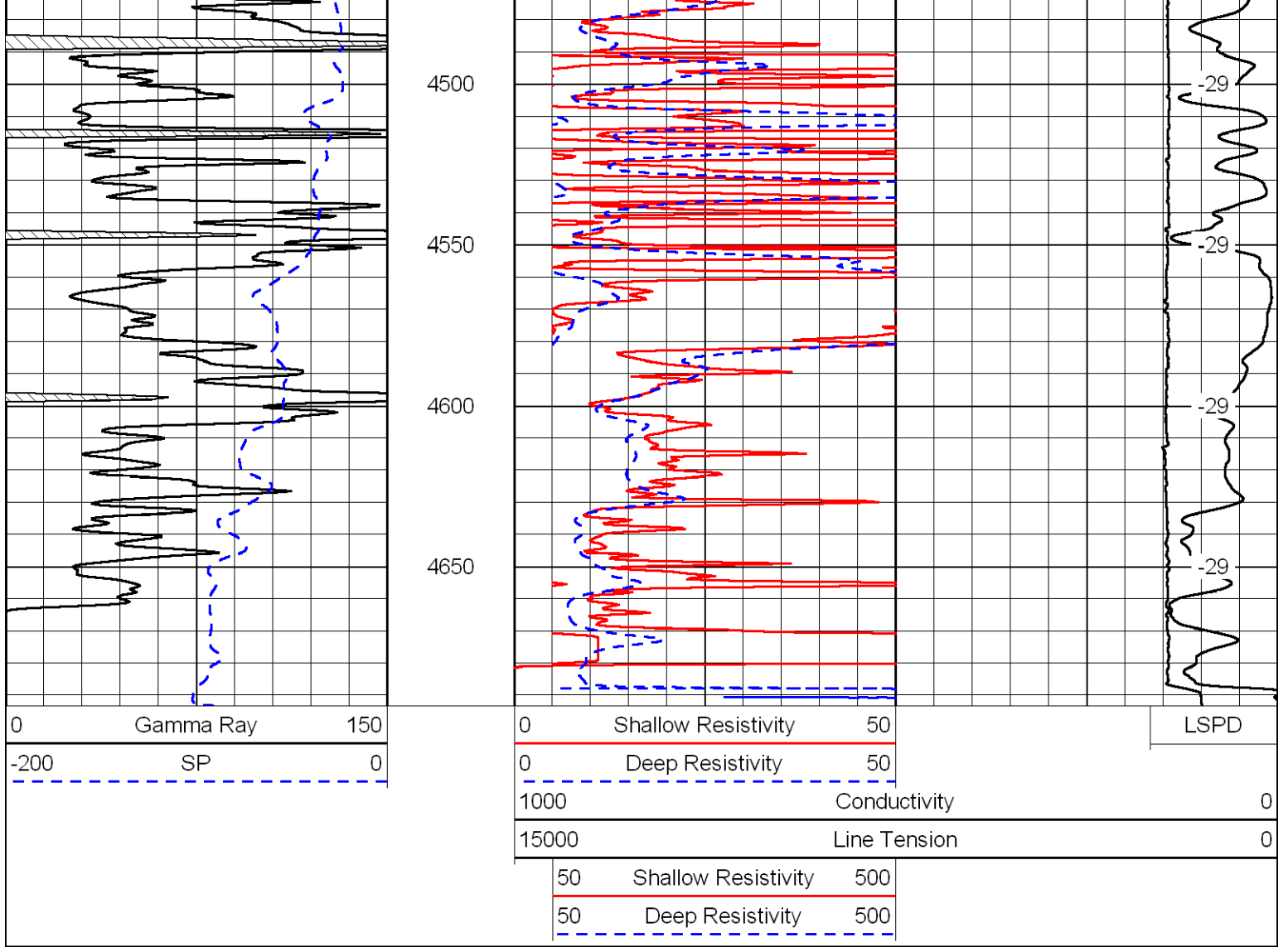




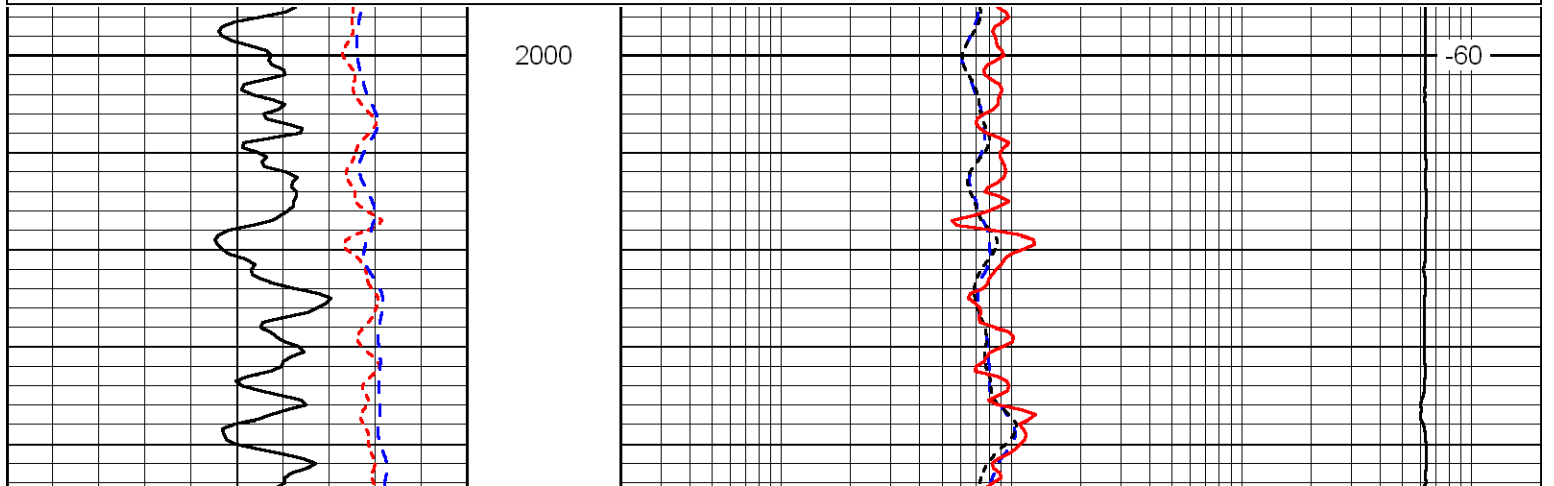
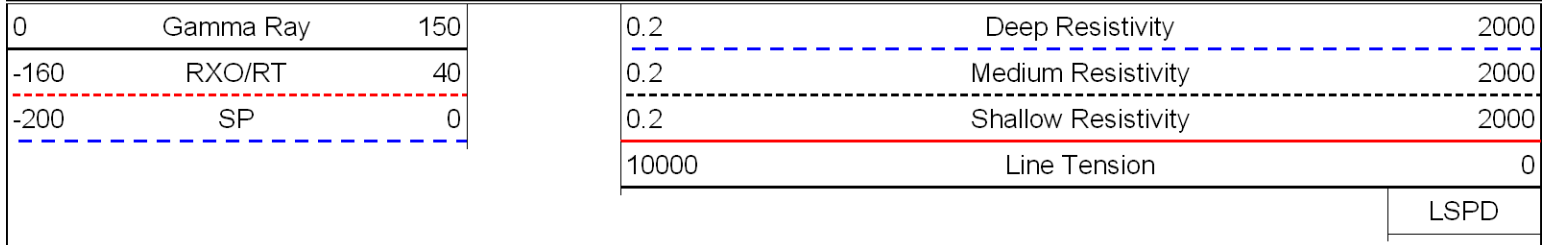
69
69
68
67
67
67
67
66
66
66
65

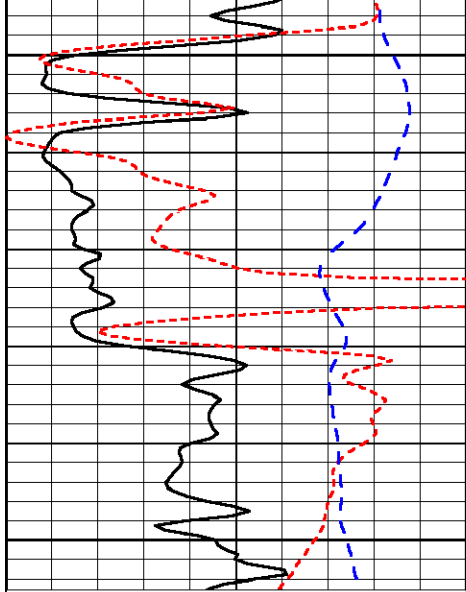






Database File: bentleyoil_mrlc_102811hd.db
 Dataset Pathname: DIL/bntstk
 Presentation Format: dil
 Dataset Creation: Fri Oct 28 17:55:24 2011
 Charted by: Depth in Feet scaled 1:240

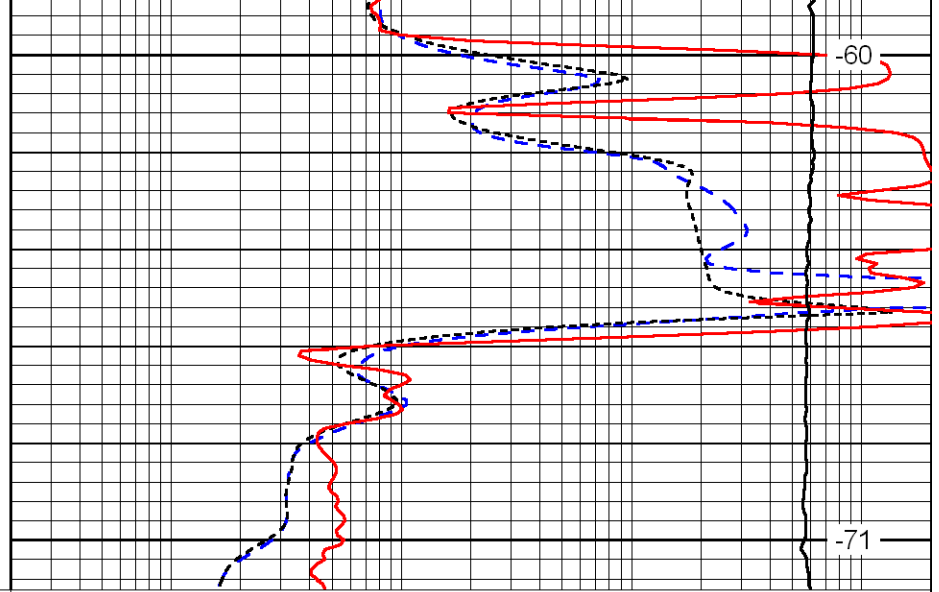




2050

2100

0	Gamma Ray	150
-160	RXO/RT	40
-200	SP	0



-60

-71

0.2	Deep Resistivity	2000
0.2	Medium Resistivity	2000
0.2	Shallow Resistivity	2000
10000	Line Tension	0

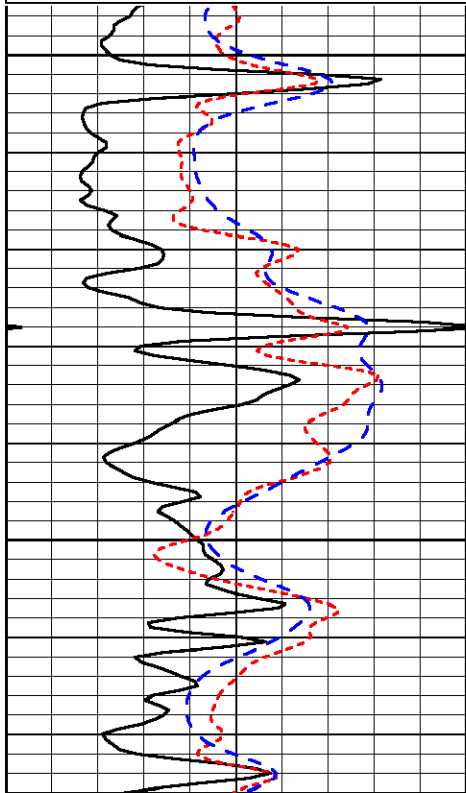
LSPD

Database File: bentleyoil_mrlc_102811hd.db
 Dataset Pathname: DIL/bntstk
 Presentation Format: dil
 Dataset Creation: Fri Oct 28 17:55:24 2011
 Charted by: Depth in Feet scaled 1:240

0	Gamma Ray	150
-160	RXO/RT	40
-200	SP	0

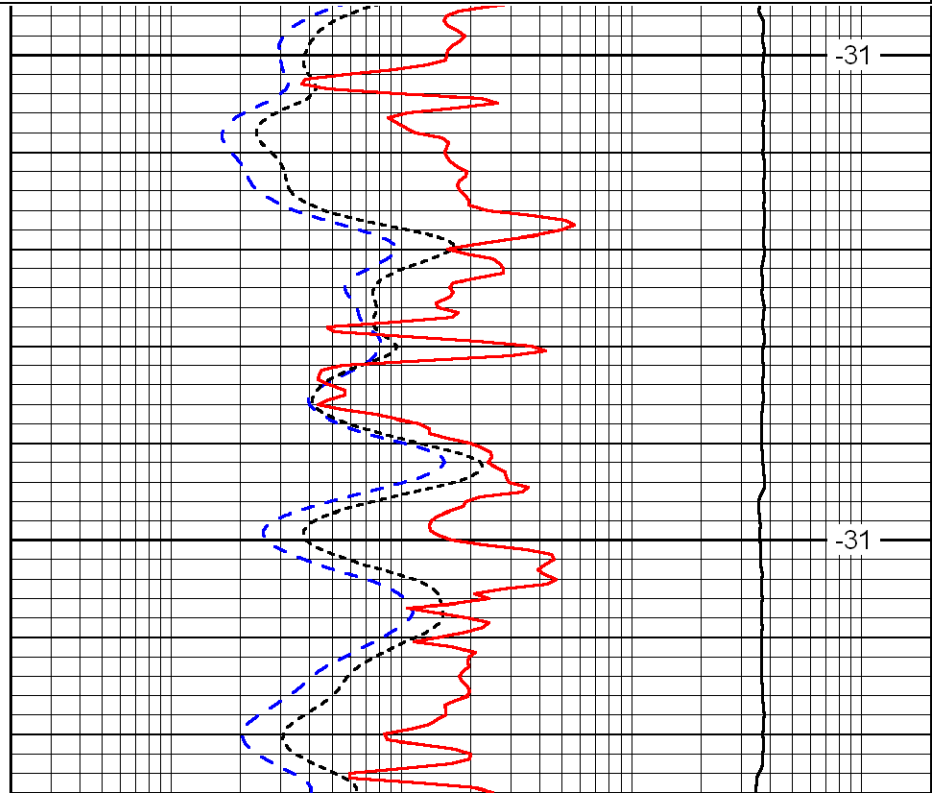
0.2	Deep Resistivity	2000
0.2	Medium Resistivity	2000
0.2	Shallow Resistivity	2000
10000	Line Tension	0

LSPD



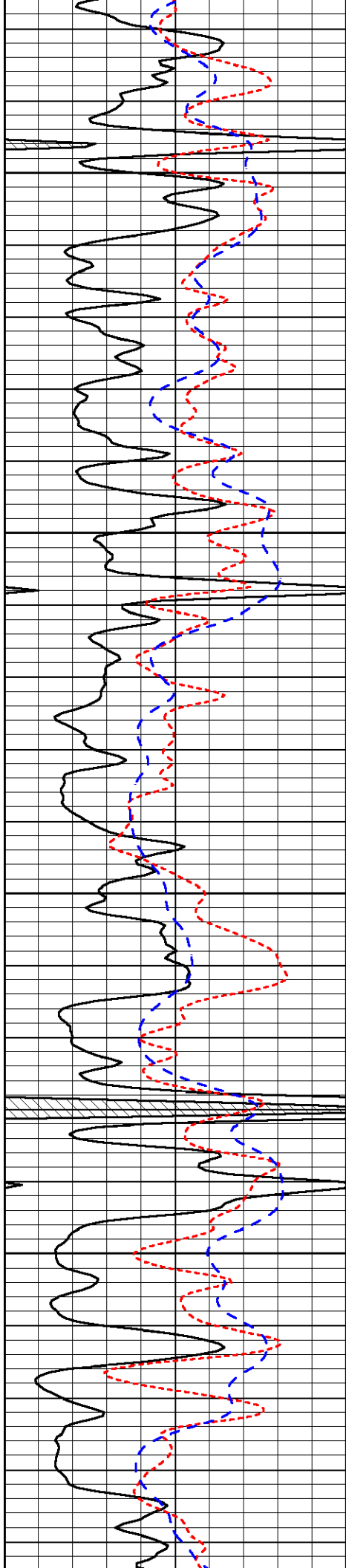
3700

3750



-31

-31

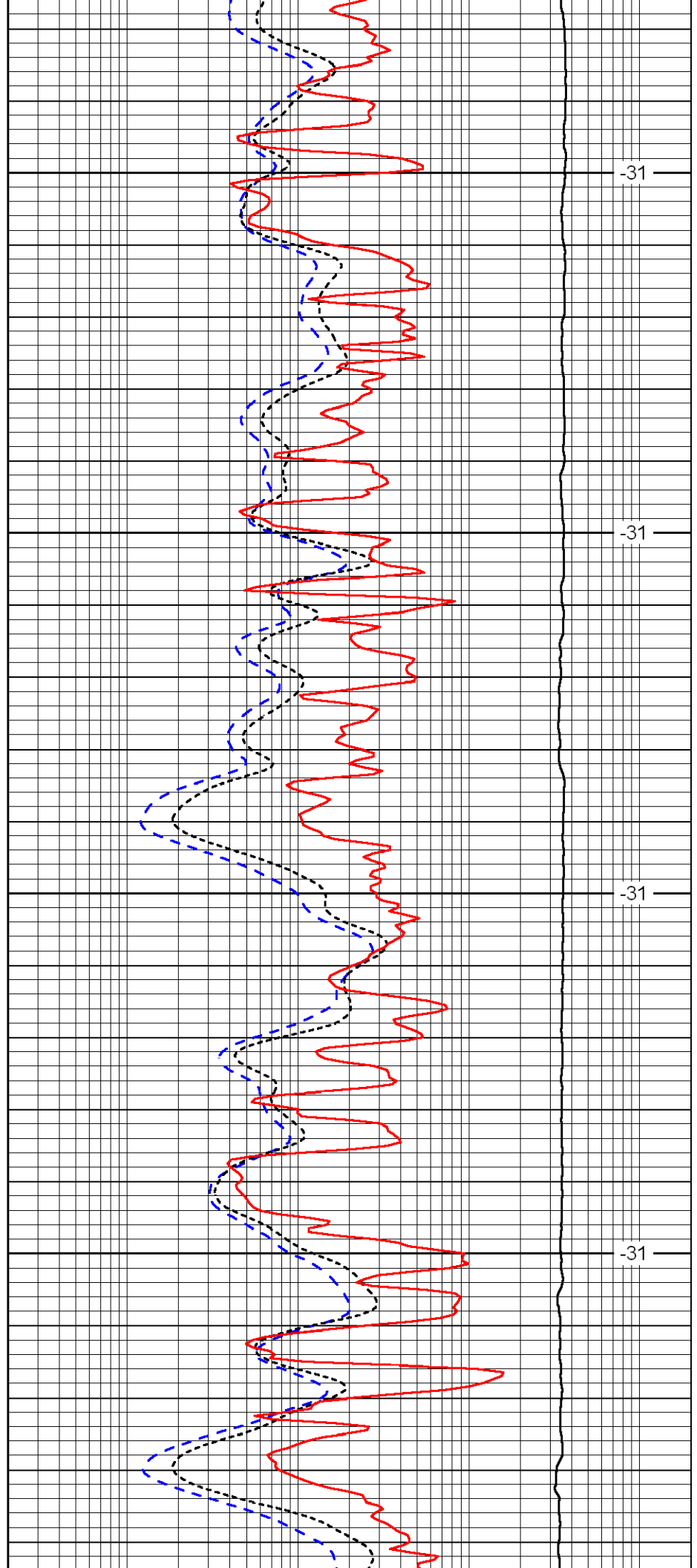


3800

3850

3900

3950

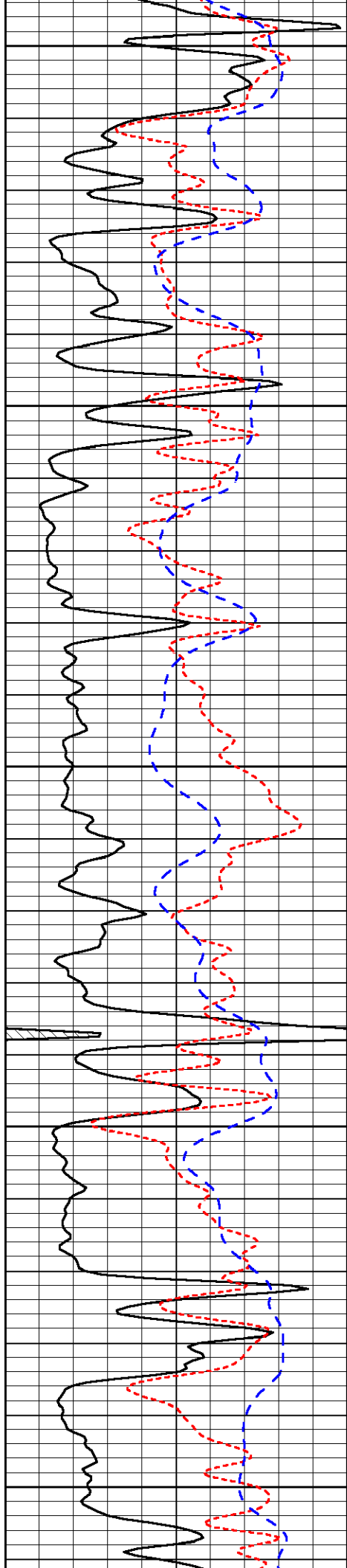


-31

-31

-31

-31



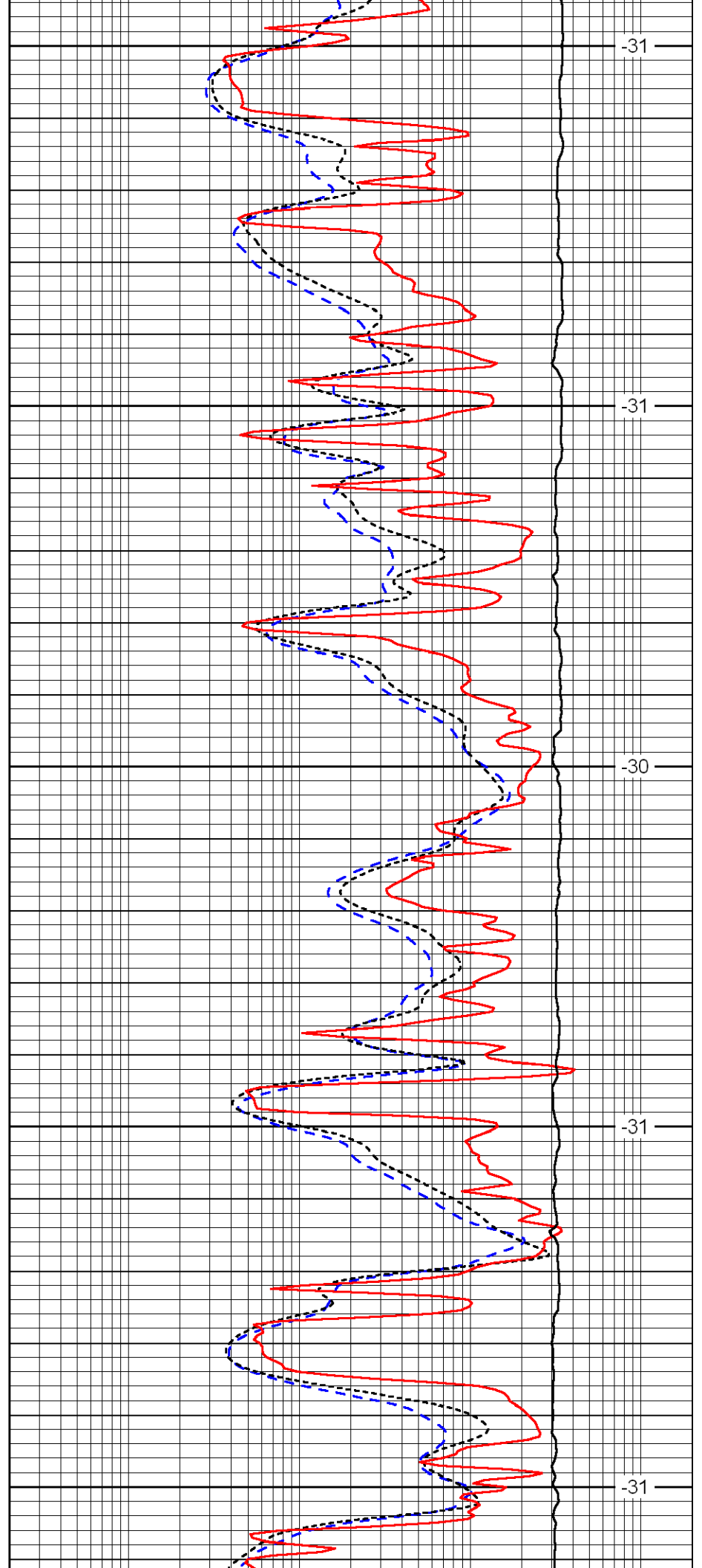
4000

4050

4100

4150

4200



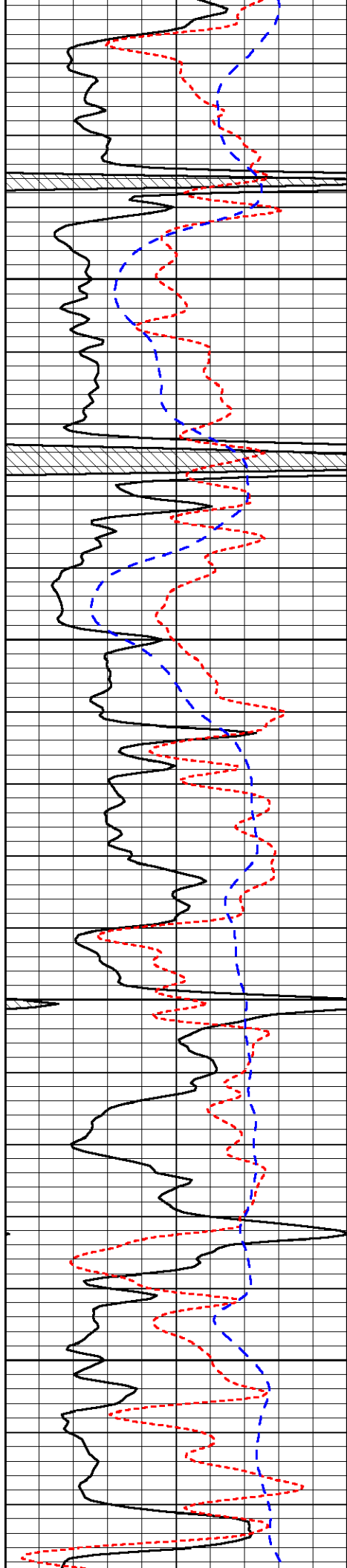
-31

-31

-30

-31

-31

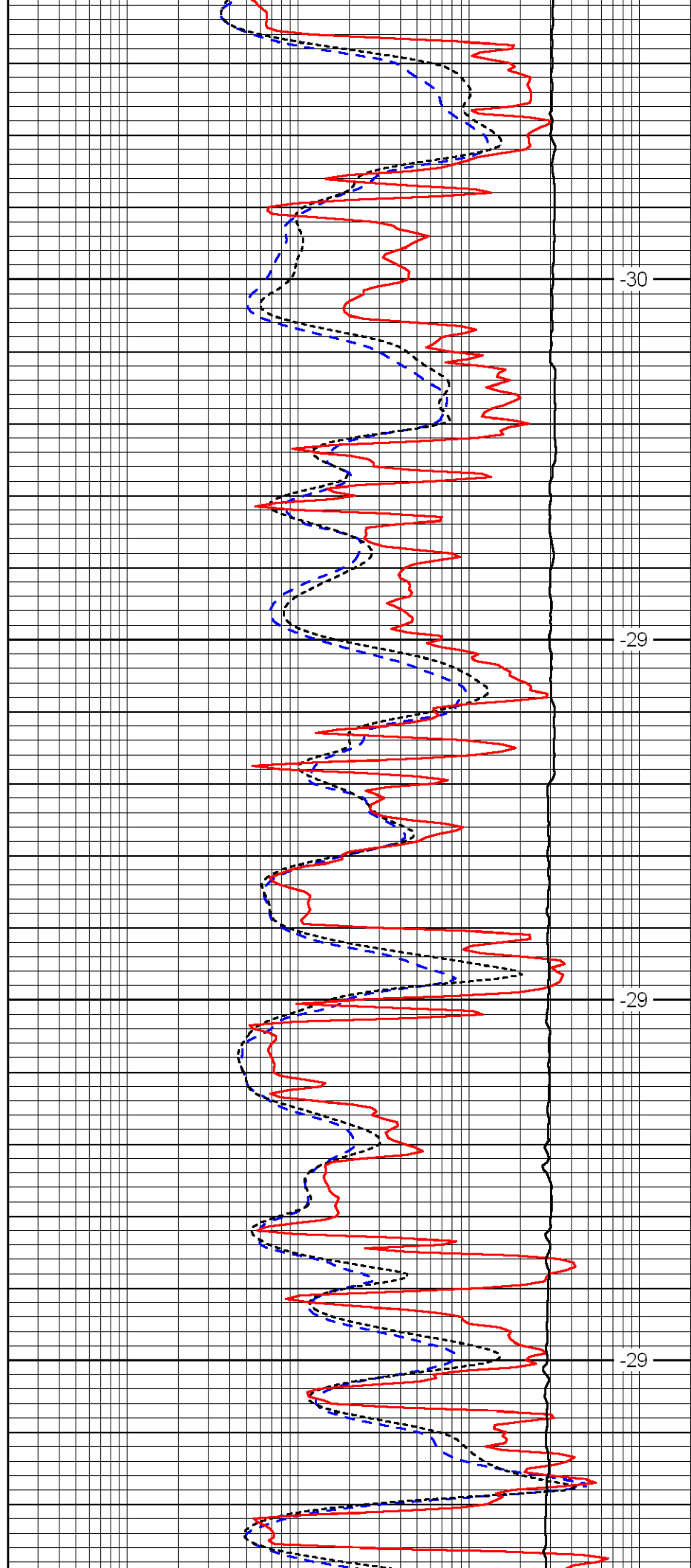


4250

4300

4350

4400

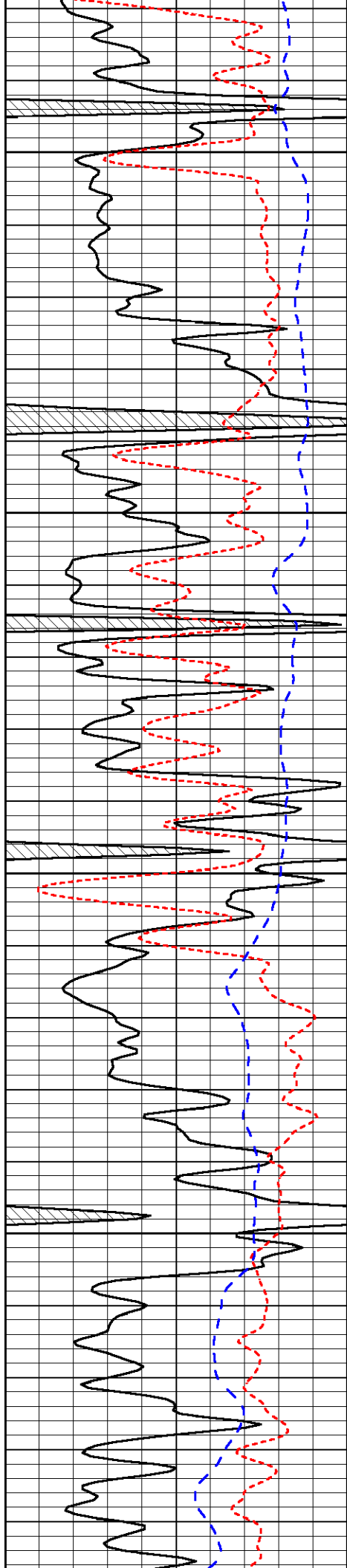


-30

-29

-29

-29

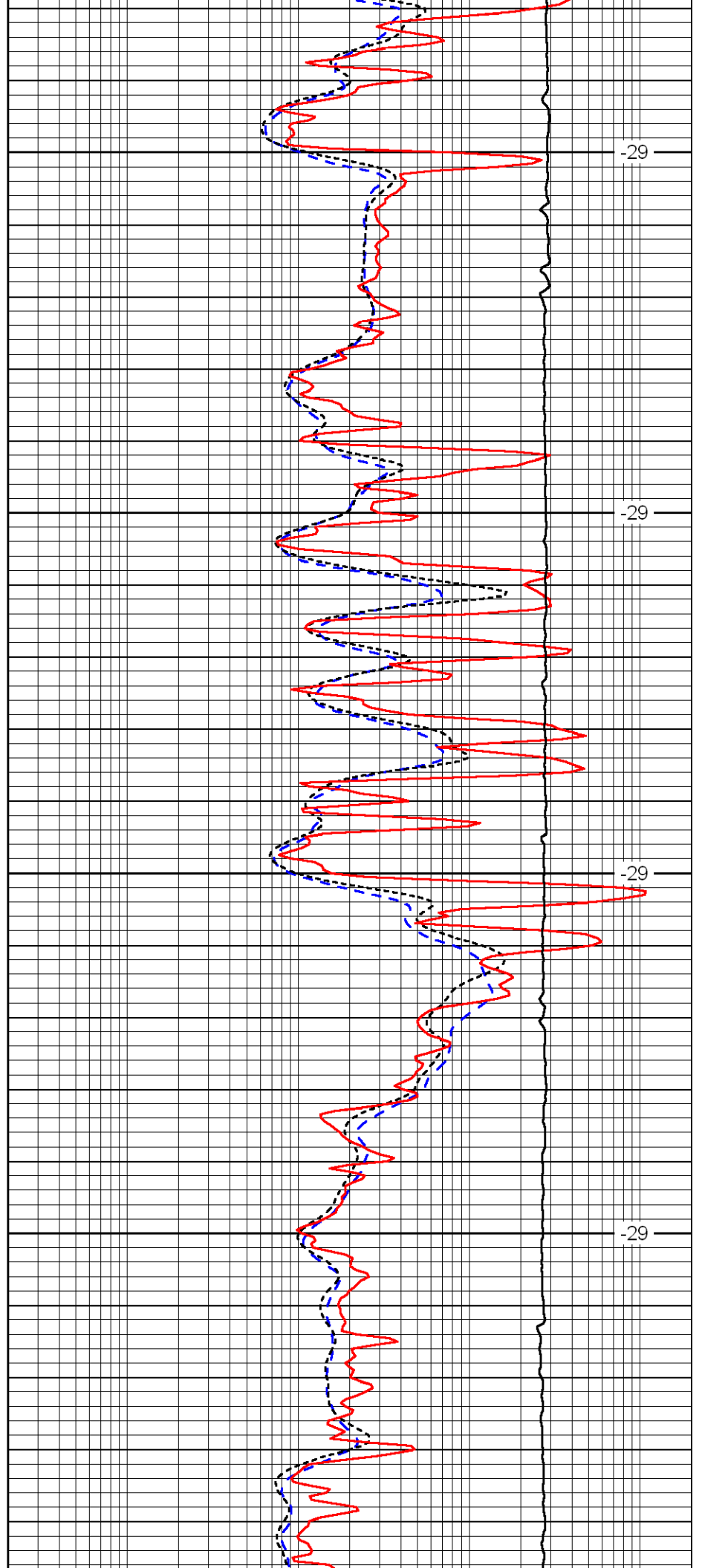


4450

4500

4550

4600



-29

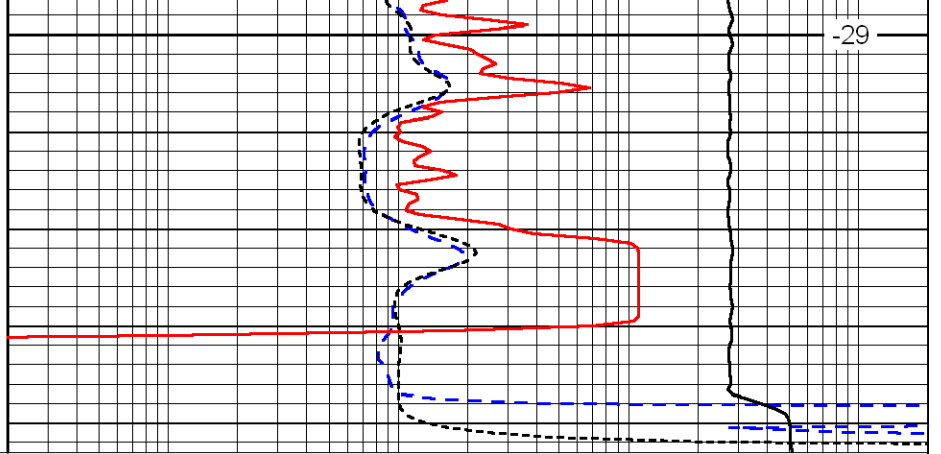
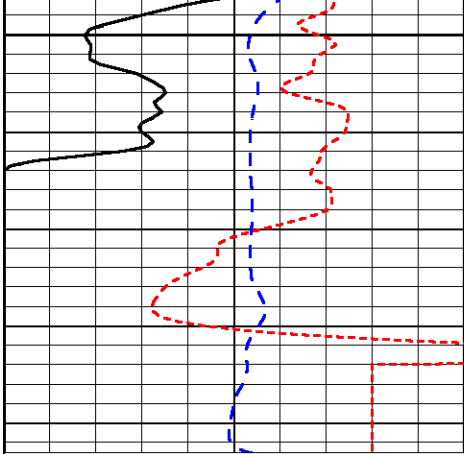
-29

-29

-29

4650

-29



0	Gamma Ray	150
-160	RXO/RT	40
-200	SP	0

0.2	Deep Resistivity	2000
0.2	Medium Resistivity	2000
0.2	Shallow Resistivity	2000
10000	Line Tension	0

LSPD