



**Borehole Compensated
Sonic Log**

DIGITAL LOG (785) 625-3858

API No. 15-065-23,614-00-00	Company H & M Petroleum Corporation	Location 2143' FNL & 725' FWL	Other Services CNL/CDL MEL/DIL
Well Oil Creek No. 2	County Graham		
Field Wildcat	State Kansas	Sec: 3	Twp: 9S Rge: 25W
Log Measured From Drilling Measured From	Ground Level Kelly Bushing	Elevation 2505	K.B. 2510 D.F. 2505 G.L. 2505

Date	02/03/2010
Run Number	Two
Type Log	BHC Sonic
Depth Driller	4080
Depth Logger	4087
Bottom Logged Interval	4076
Top Logged Interval	200
Type Fluid In Hole	Chemical
Salinity, PPM CL	1,500
Density	9.4
Level	Full
Max. Rec. Temp. F	119
Operating Rig Time	5 Hours
Equipment -- Location	10 Hays
Recorded By	Jason Wellbrock
Witnessed By	Richard Hall

Run No	Bit	Borehole Record		Size	Wgt. 24#	Casing Record	
		From	To			From	To
1	12.25	00	221	8.625	24#	00	221
2	7.875	221	4080				

<<< Fold Here >>>

All interpretations are opinions based on inferences from electrical or other measurements and we cannot and do not guarantee the accuracy or correctness of any interpretation, and we shall not, except in the case of gross or willful negligence on our part, be liable or responsible for any loss, costs, damages, or expenses incurred or sustained by anyone resulting from any interpretation made by any of our officers, agents or employees. These interpretations are also subject to our general terms and conditions set out in our current Price Schedule.

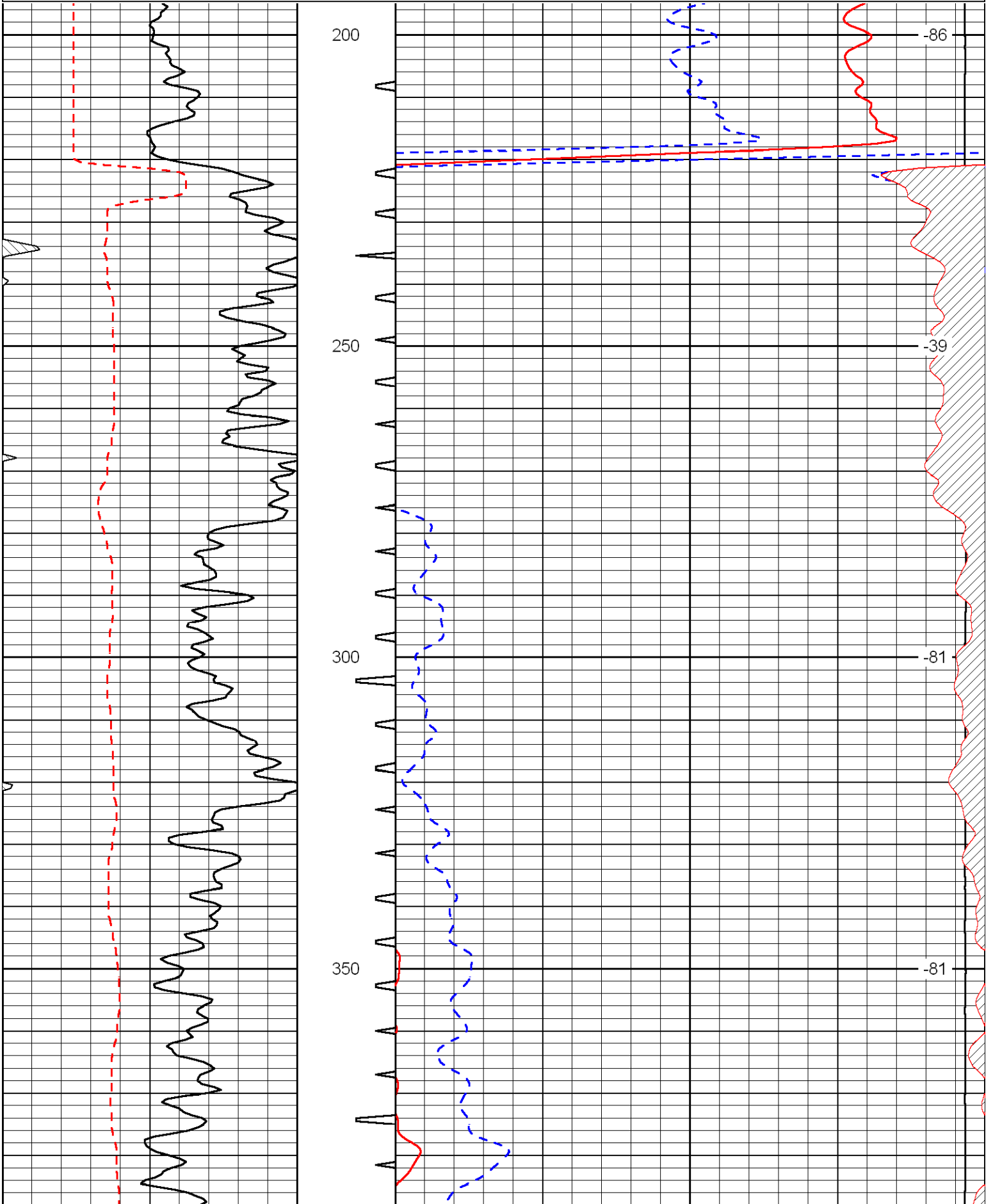
Comments

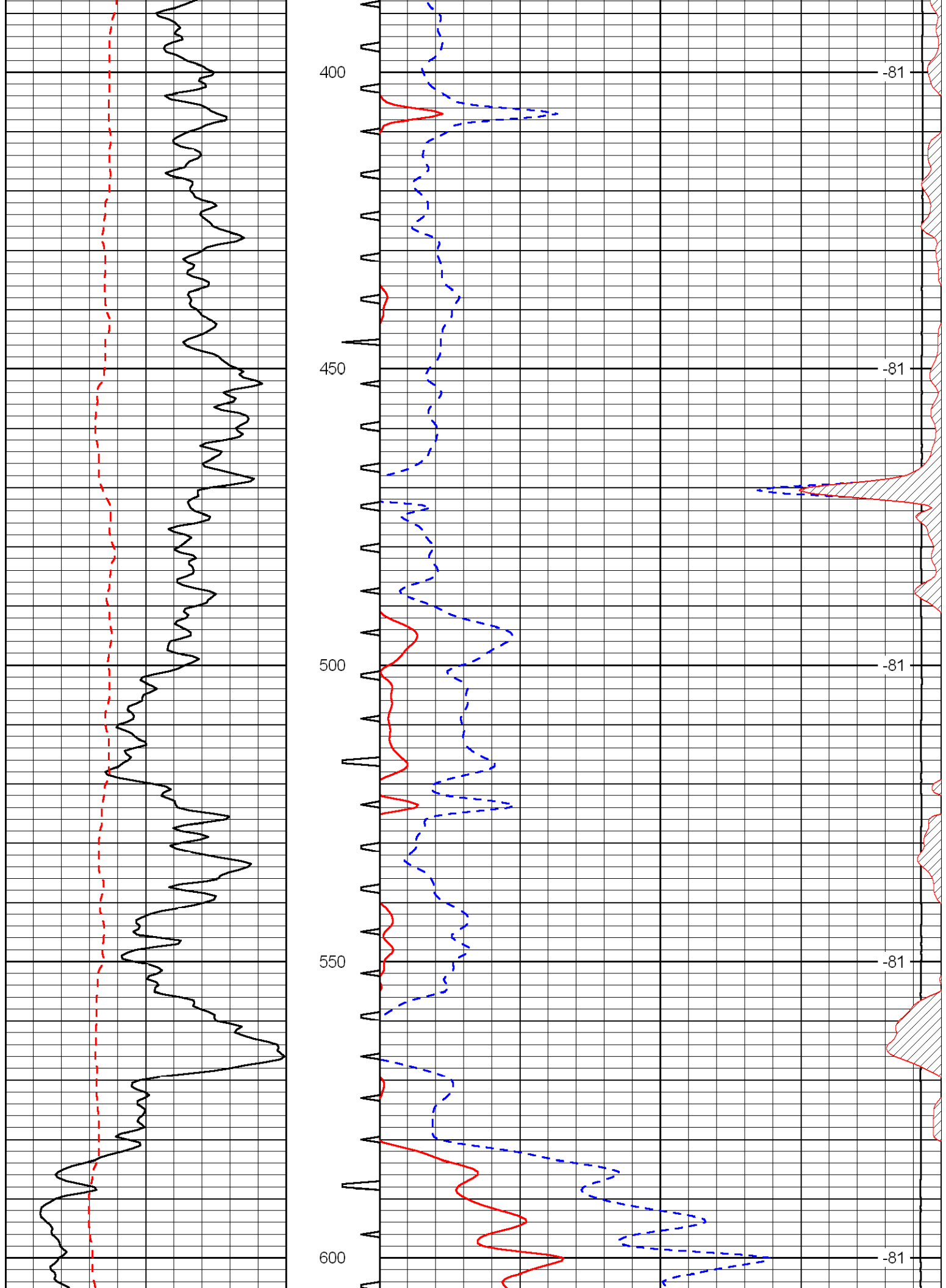
Thank you for using Log-Tech, Inc.
(785) 625-3858

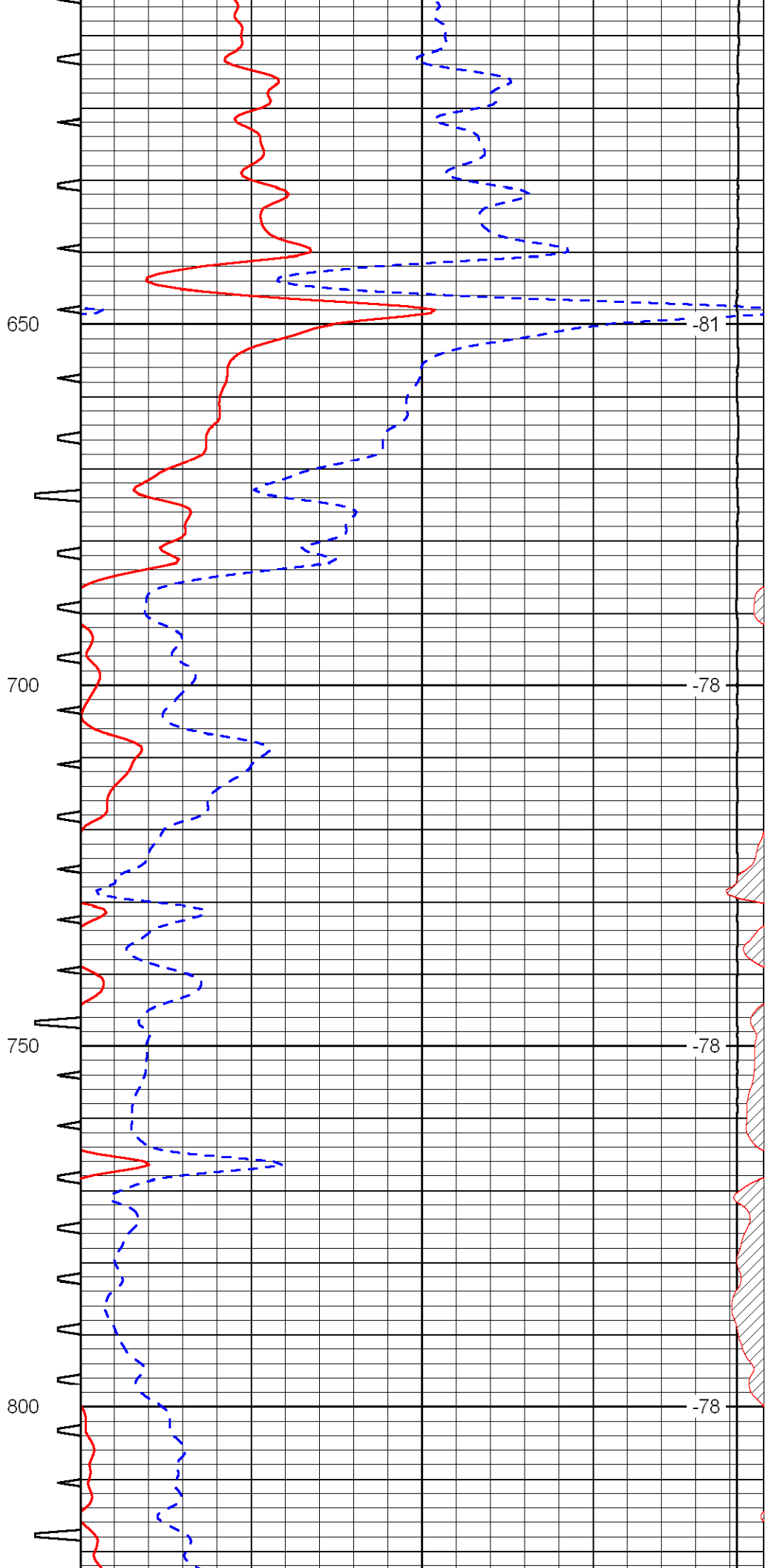
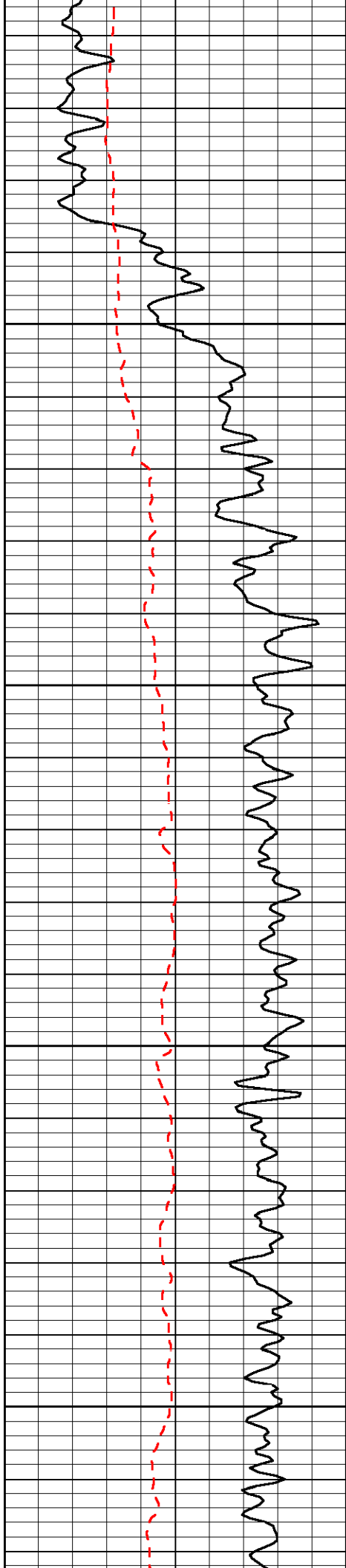
Morland 4S To L rd, 1W, 1N, N Into

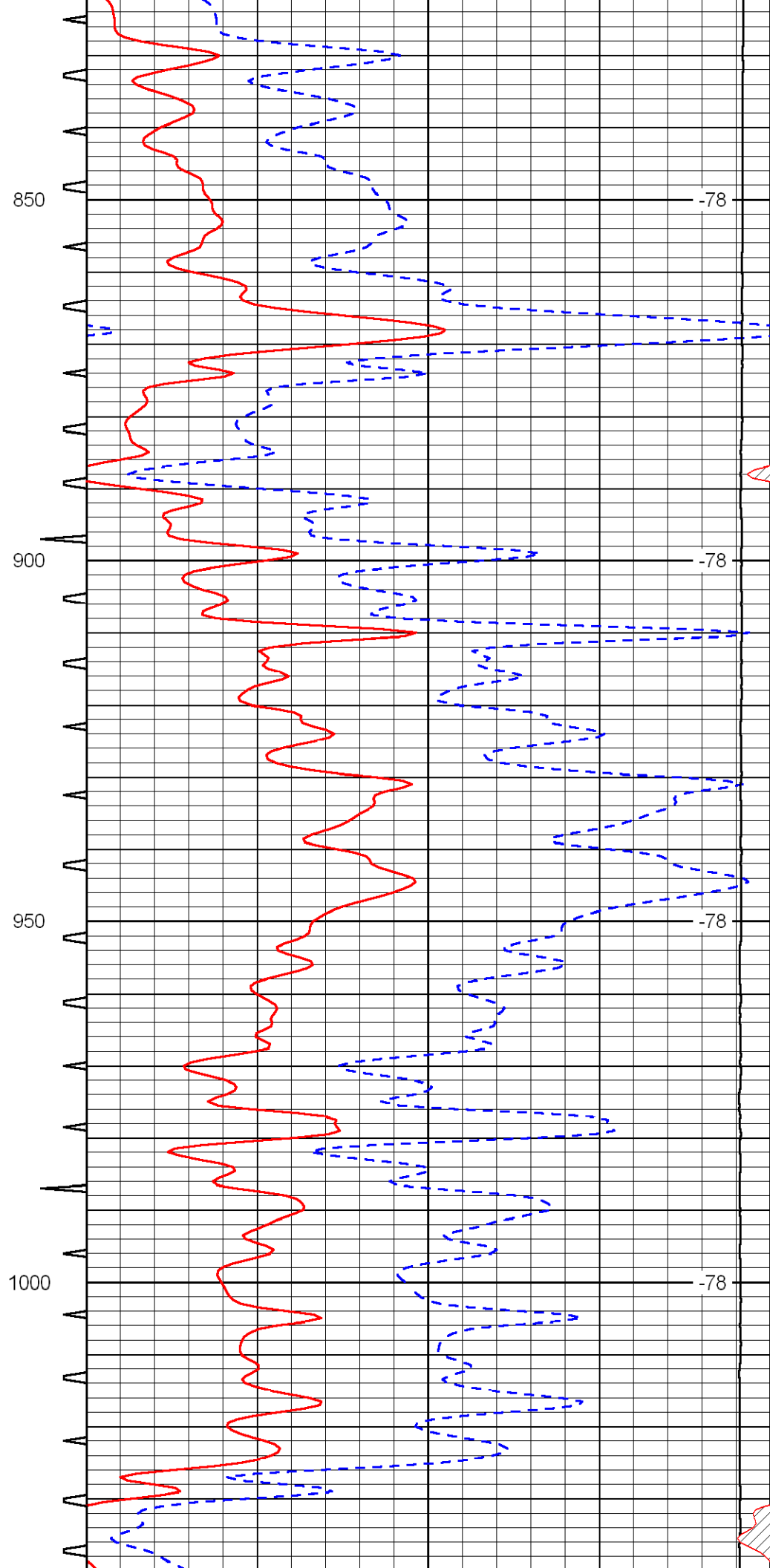
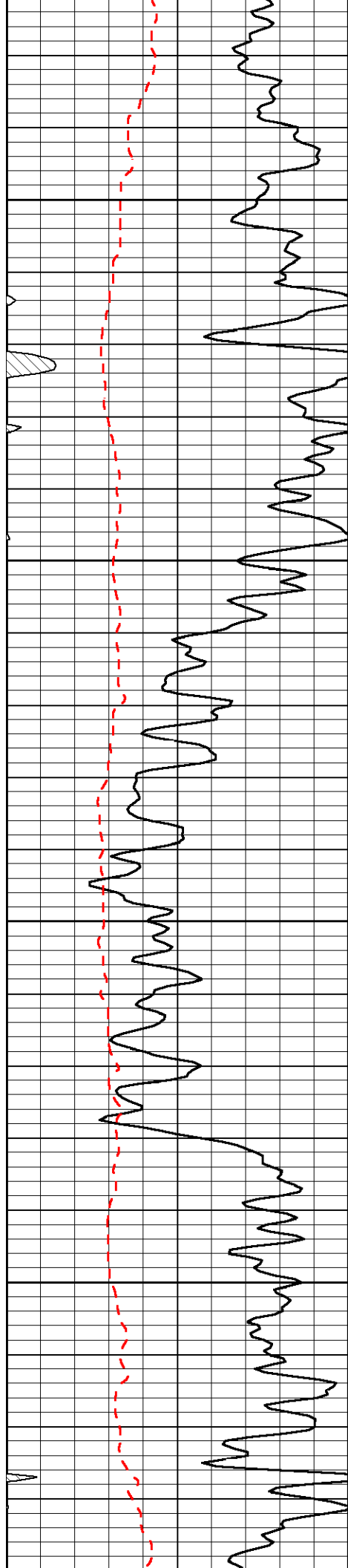
Database File: c:\warrior\data\h&m_oil creek no. 2\h and mhd.db
 Dataset Pathname: dil/stack
 Presentation Format: sonic
 Dataset Creation: Wed Feb 03 02:01:59 2010
 Charted by: Depth in Feet scaled 1:240

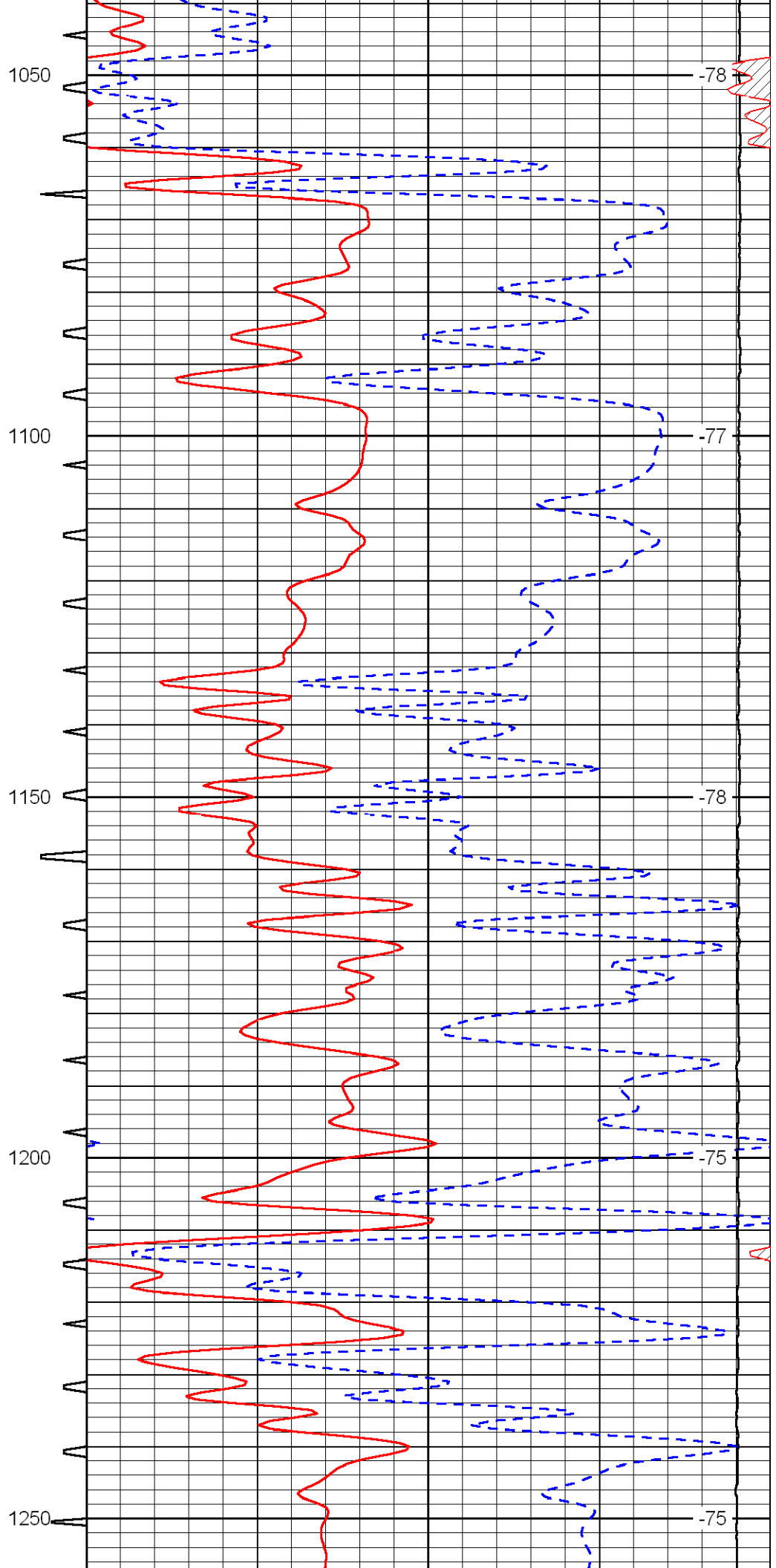
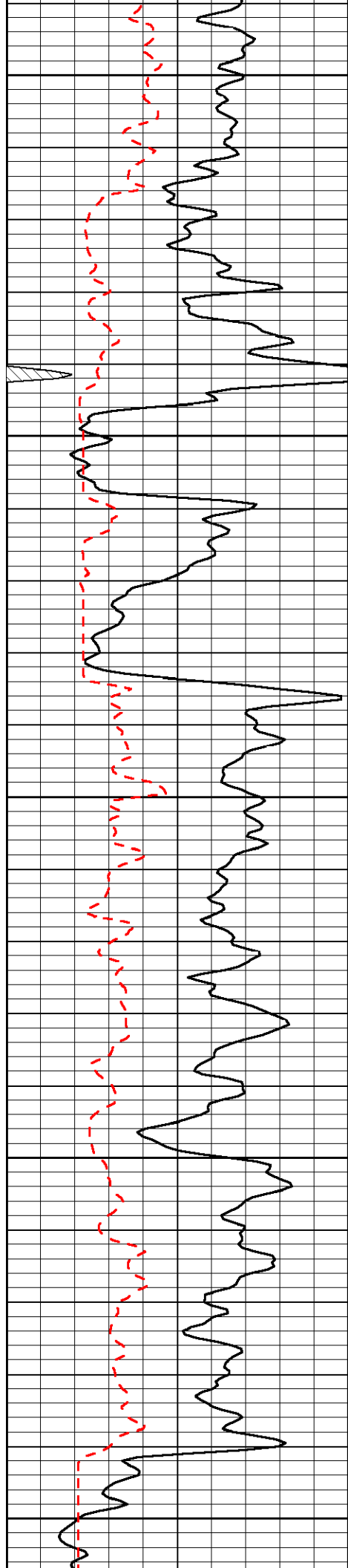
0	Gamma Ray	150	Sonic Int	140	Delta Time (usec/ft) (usec/ft)	40
150	Gamma Ray	300	5 (msec)	0	SPOR (pu)	-10
6	Caliper (in)	16		15000	LTEN (lb) (lb)	0
						LSPD (ft/min)

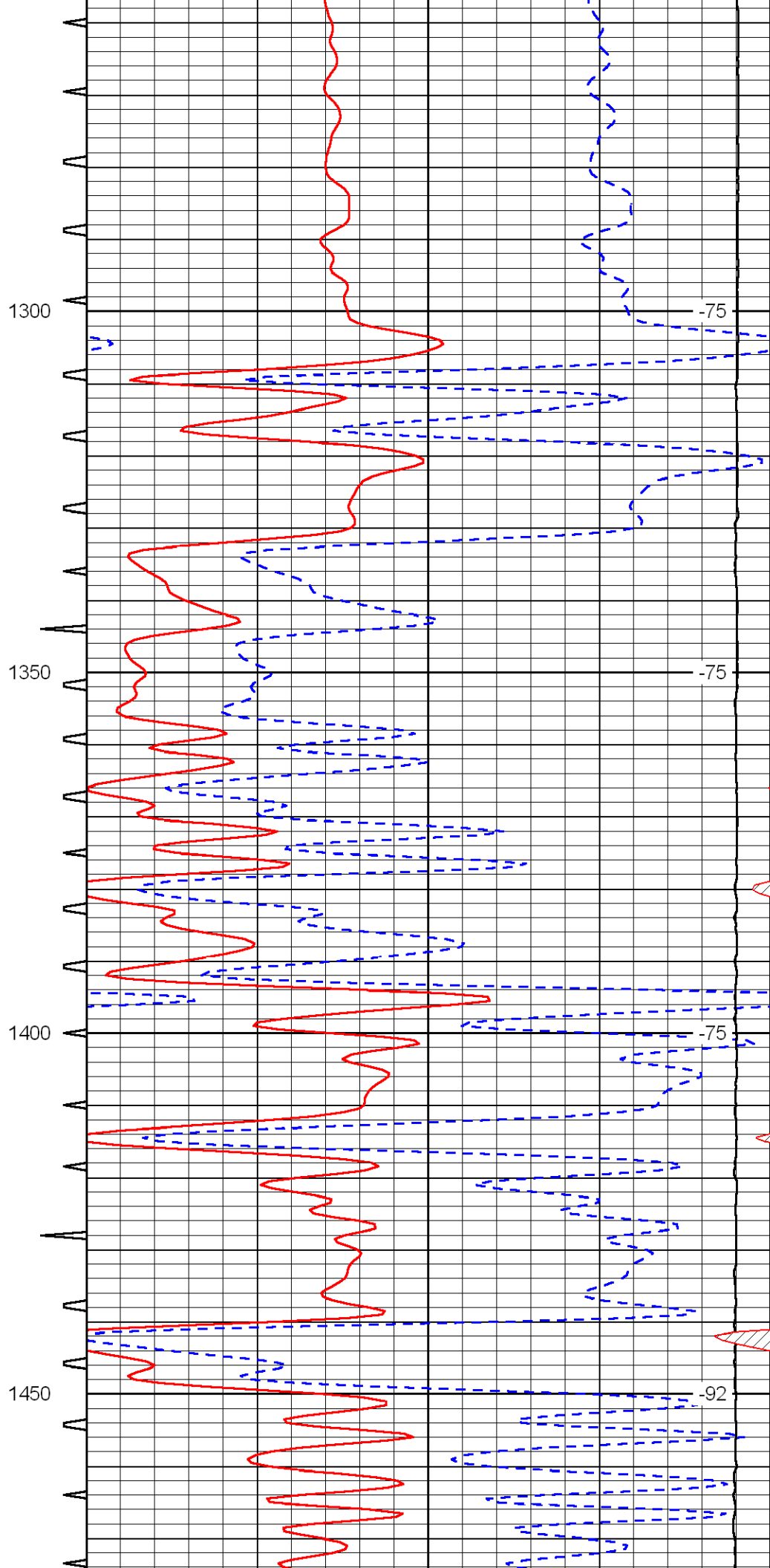
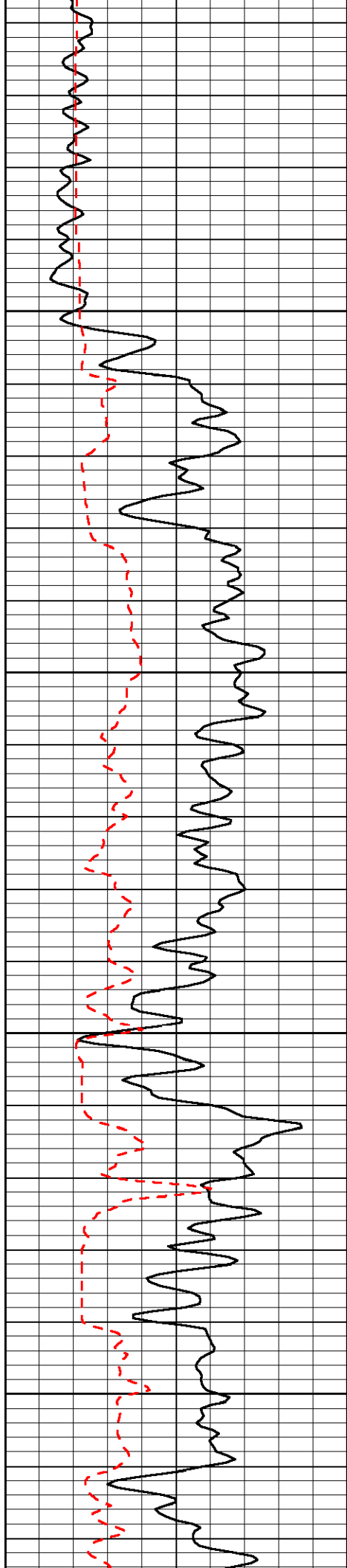


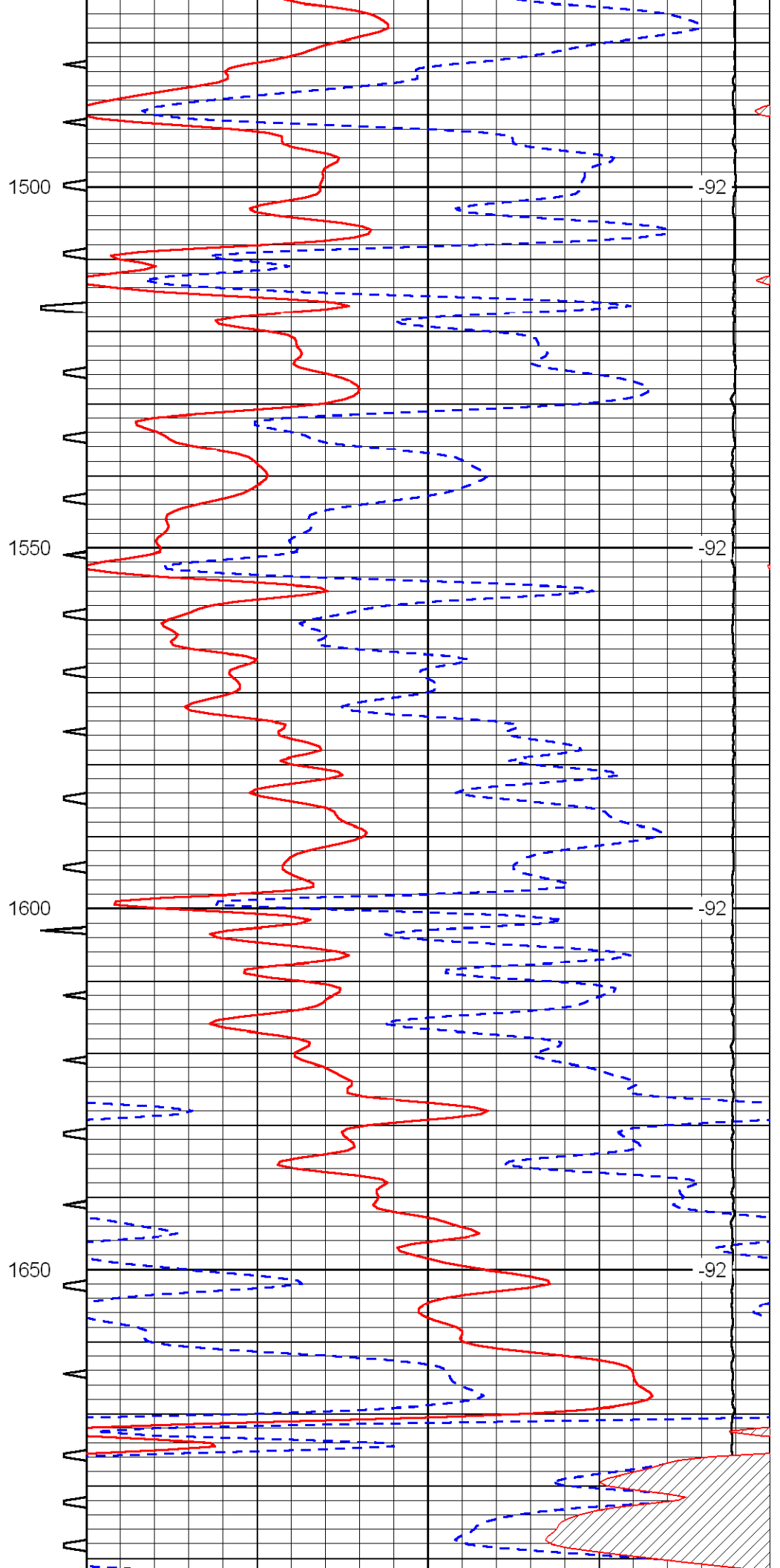
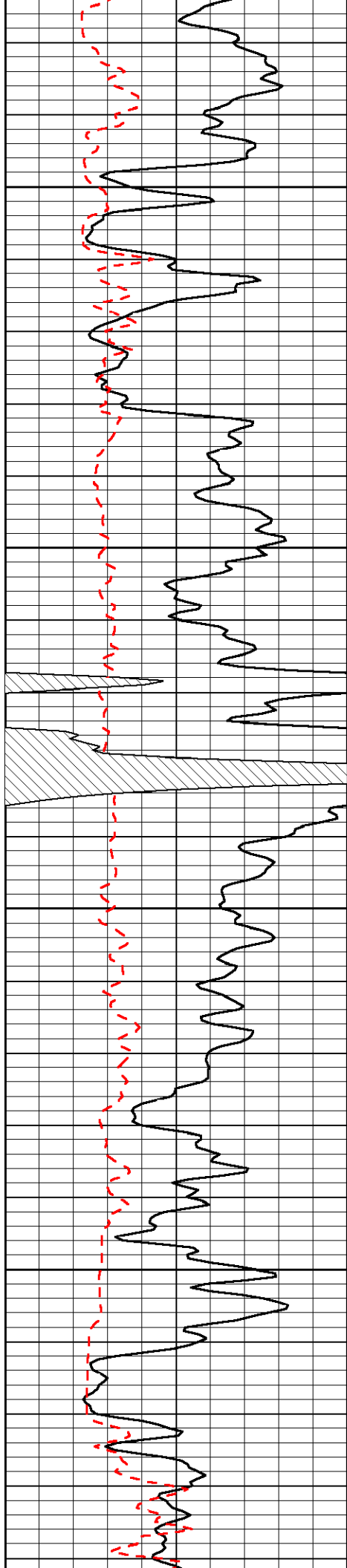


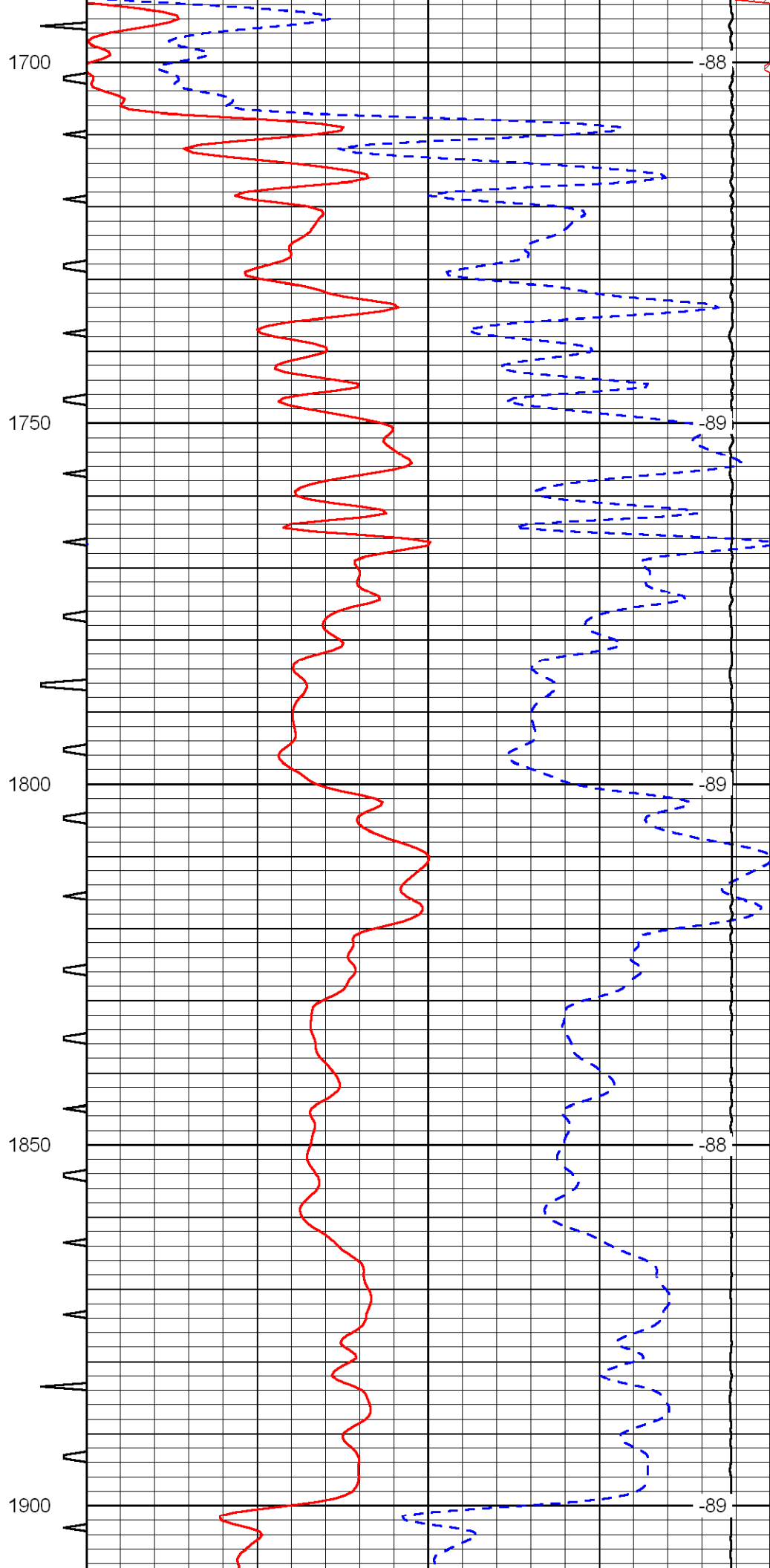
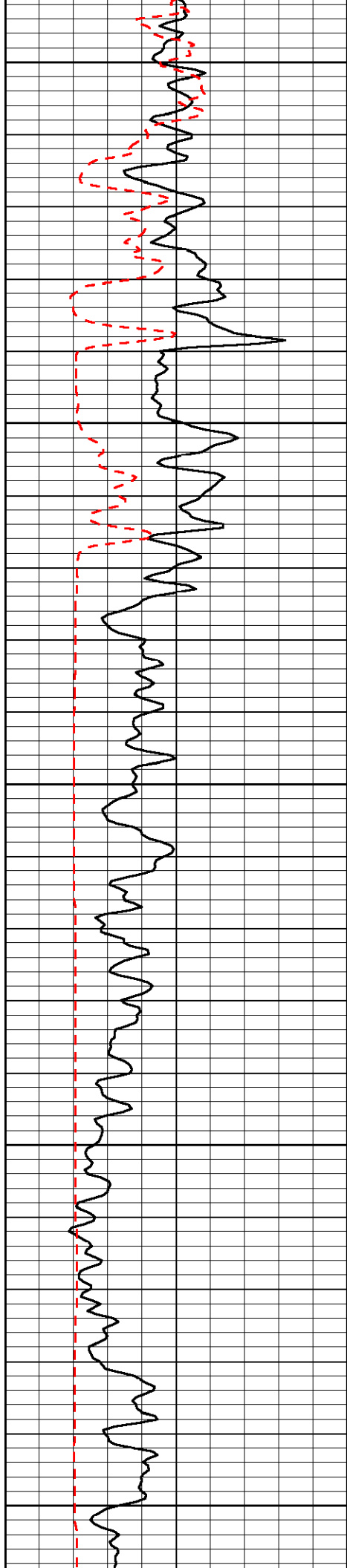


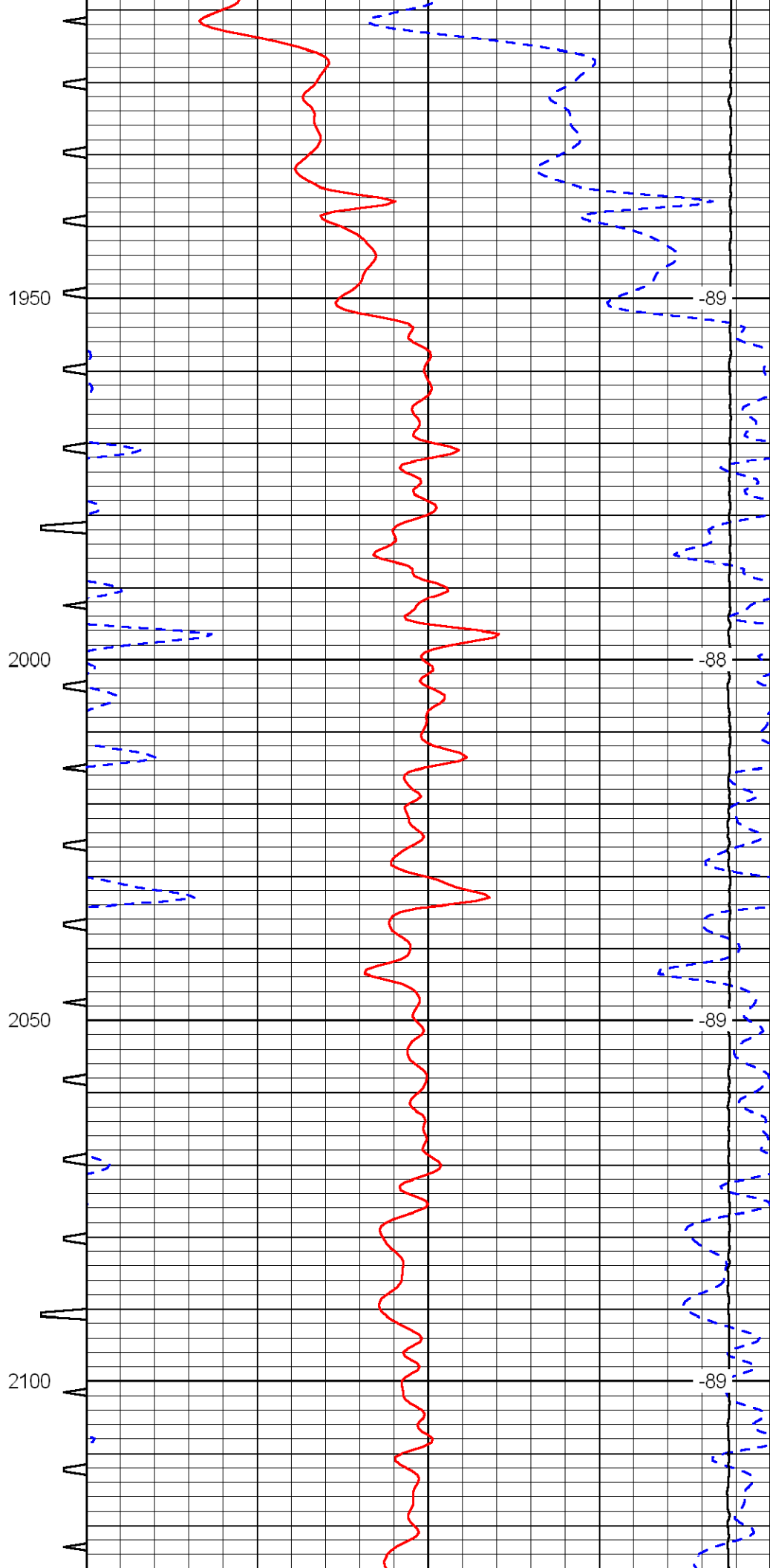
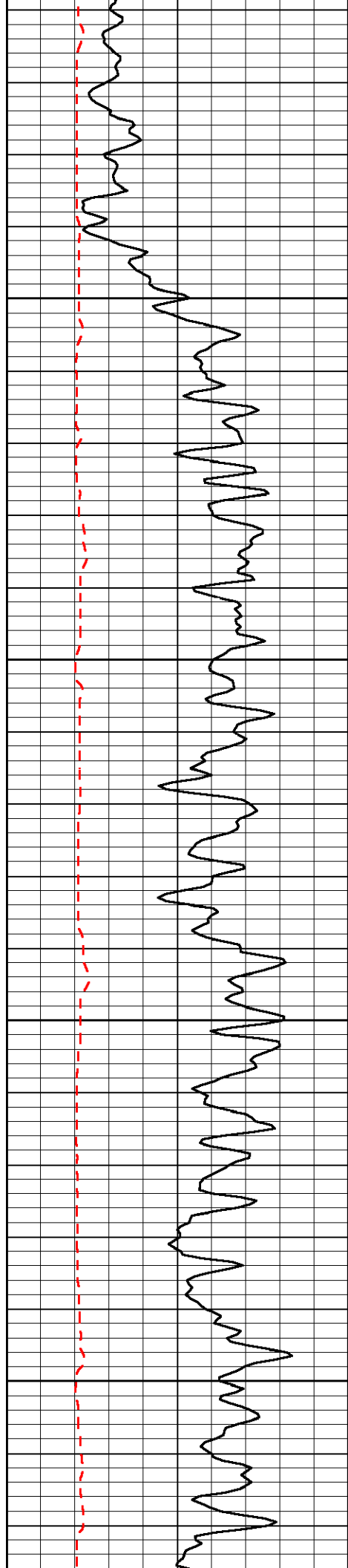


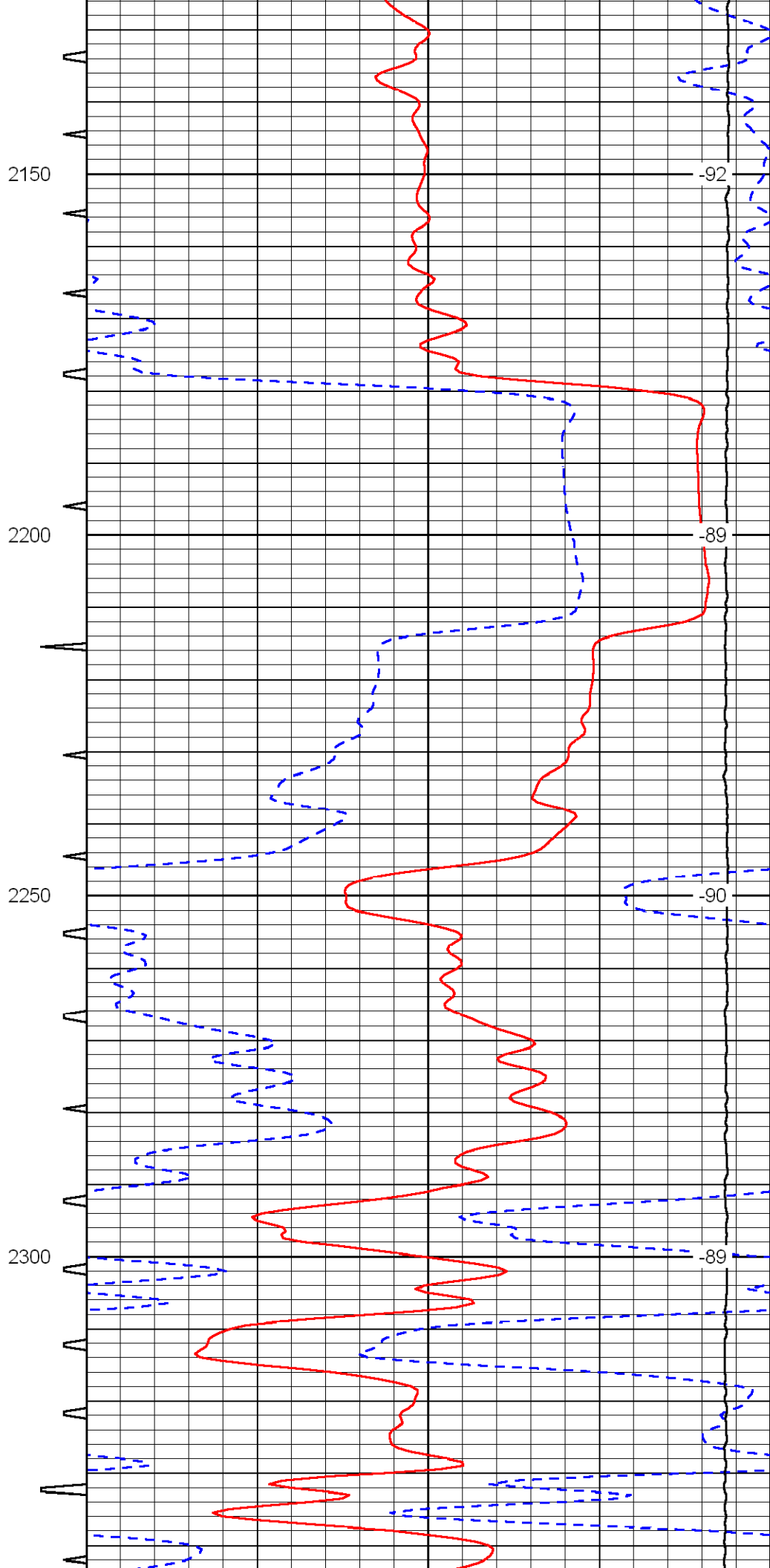
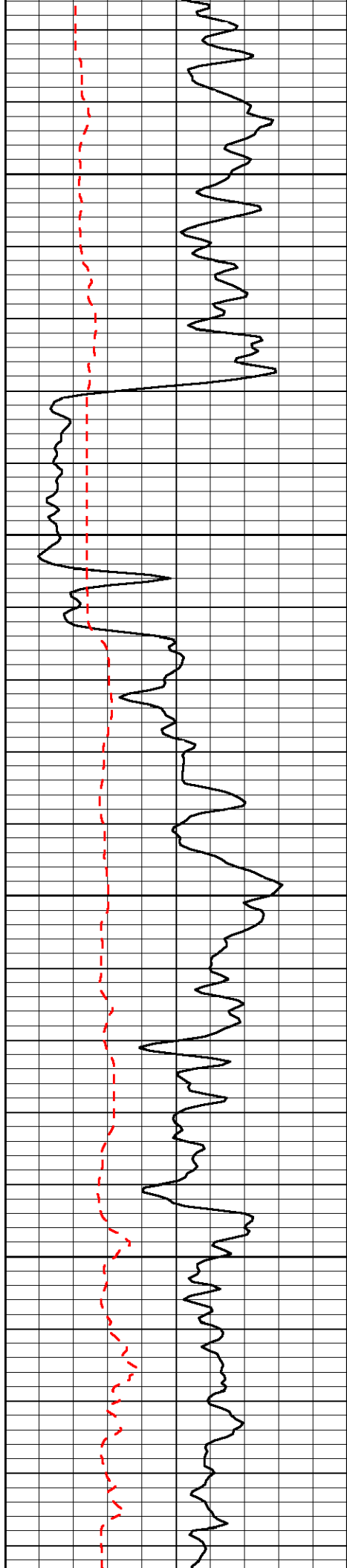


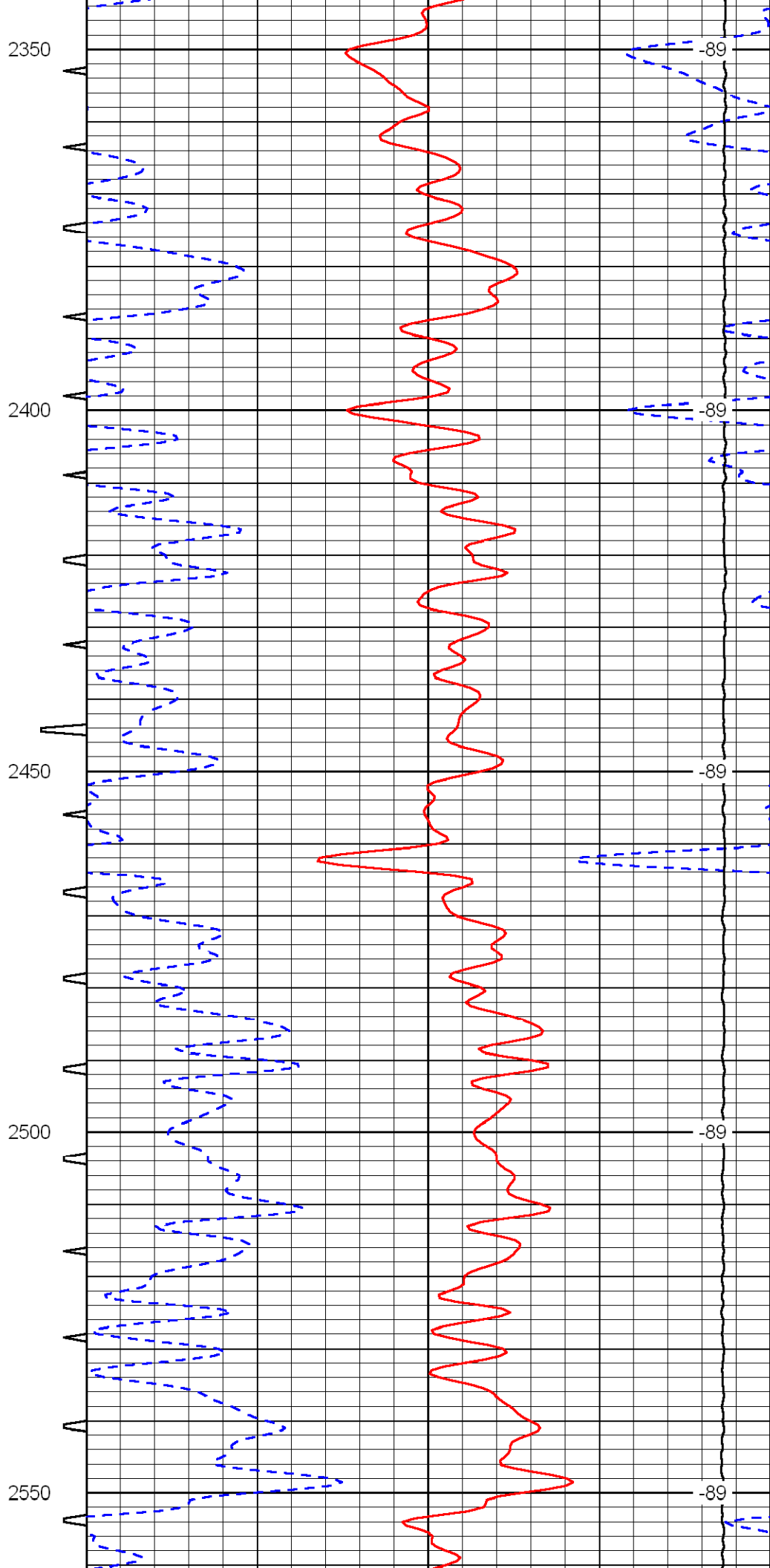
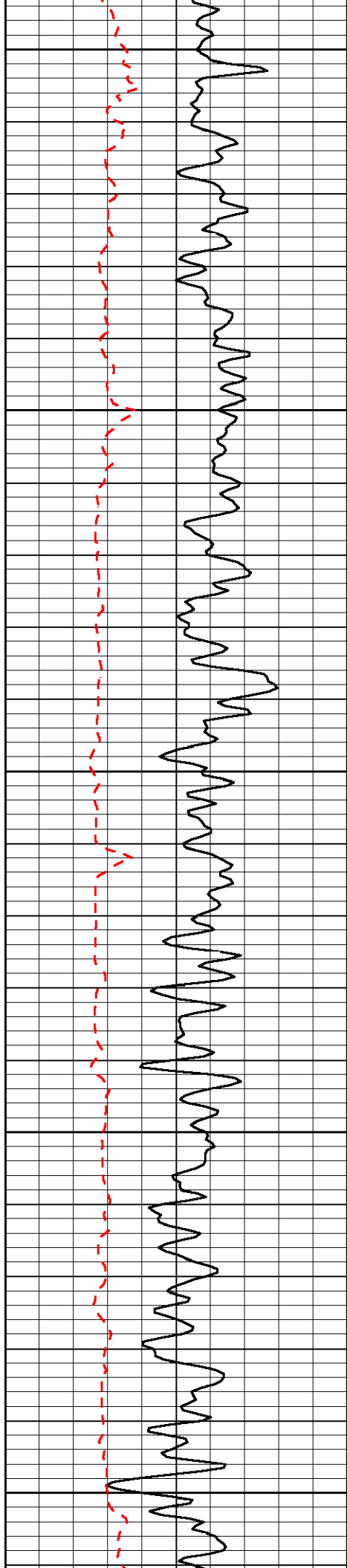


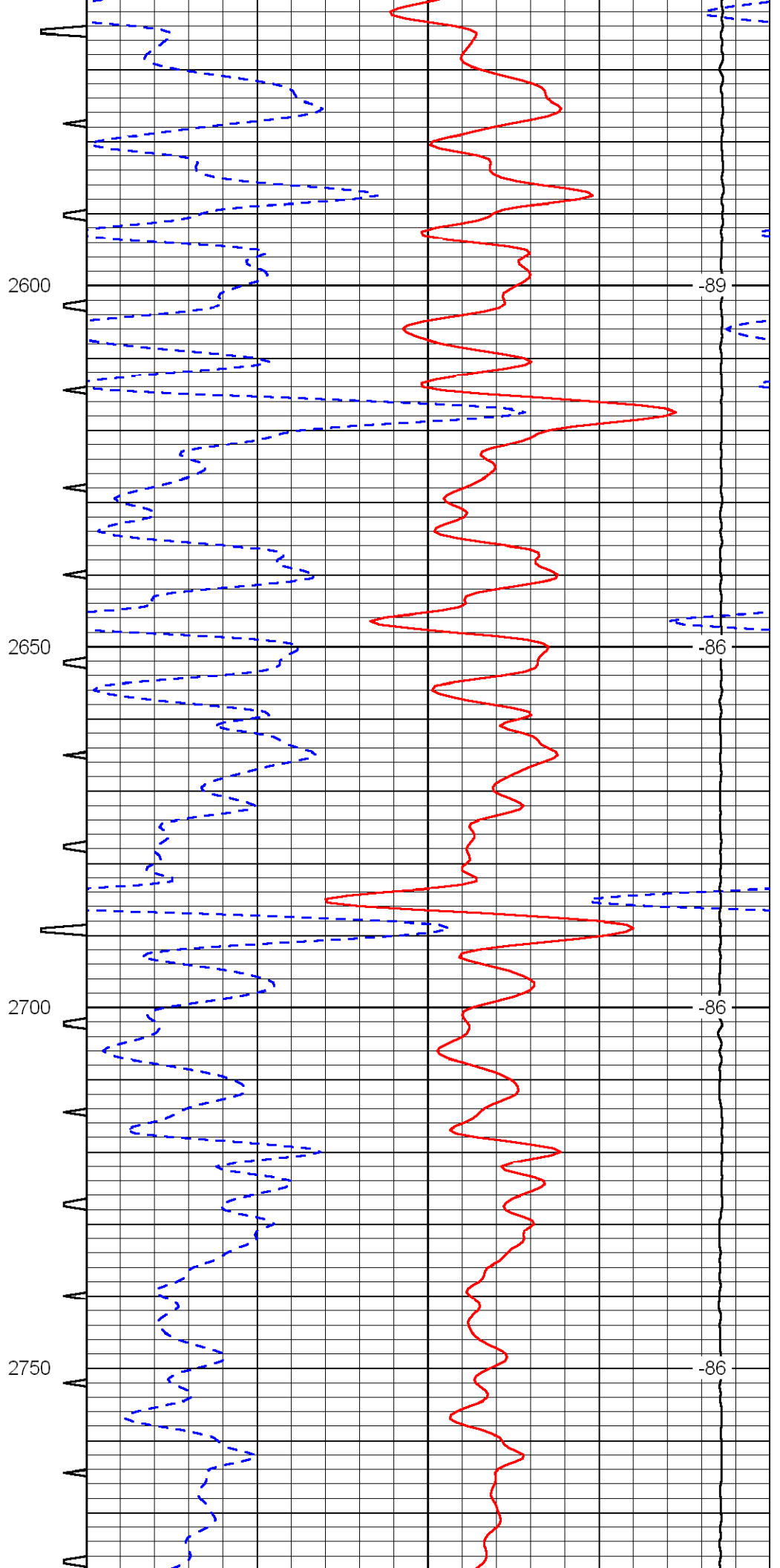
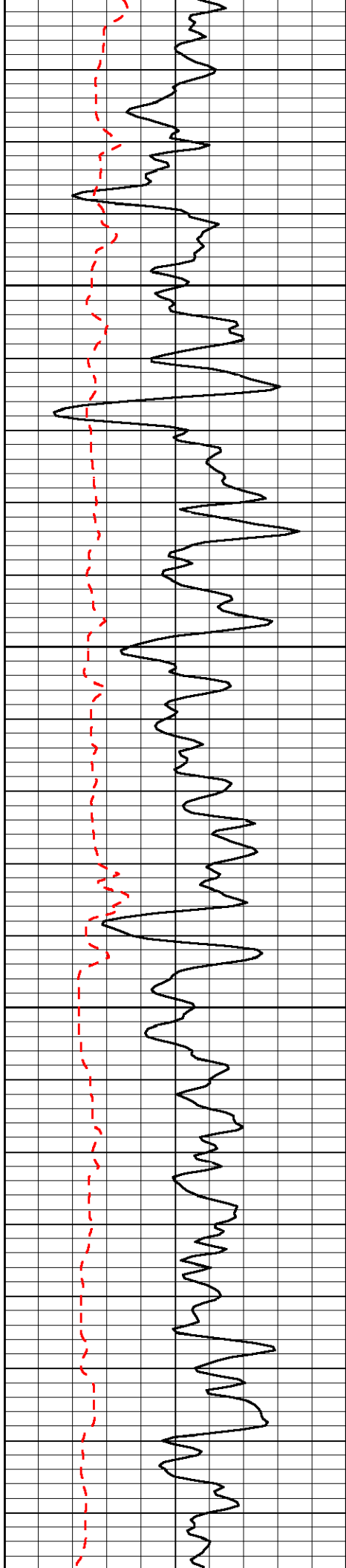


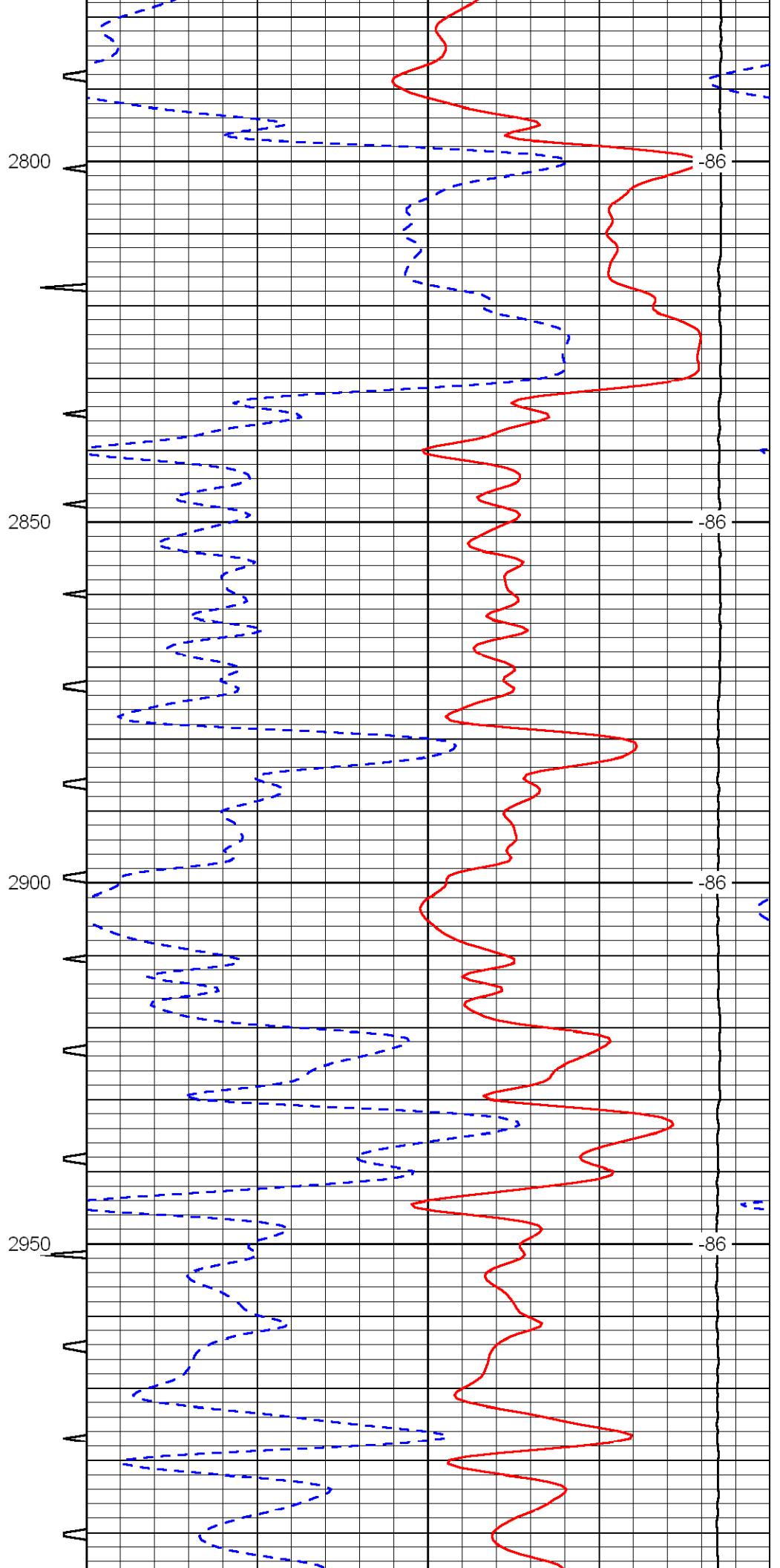
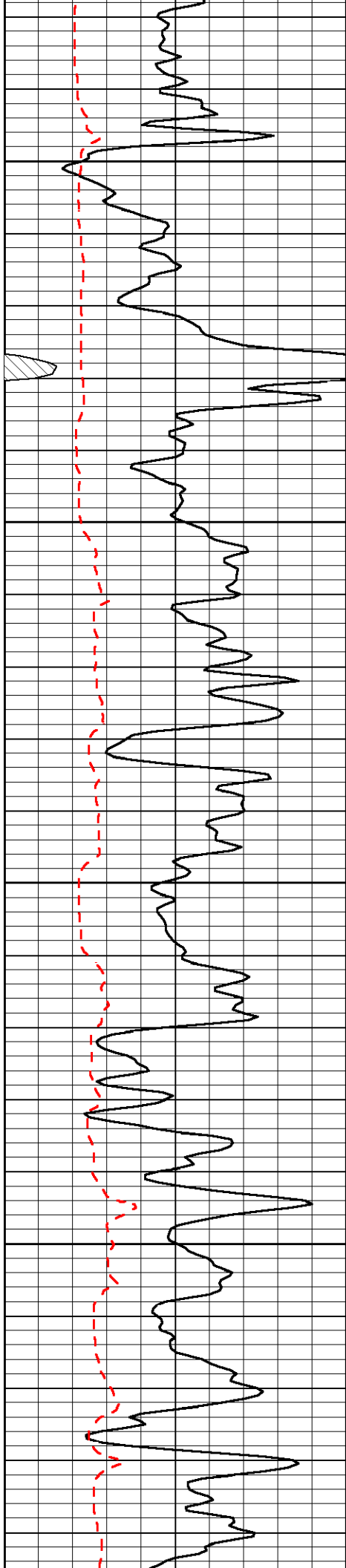


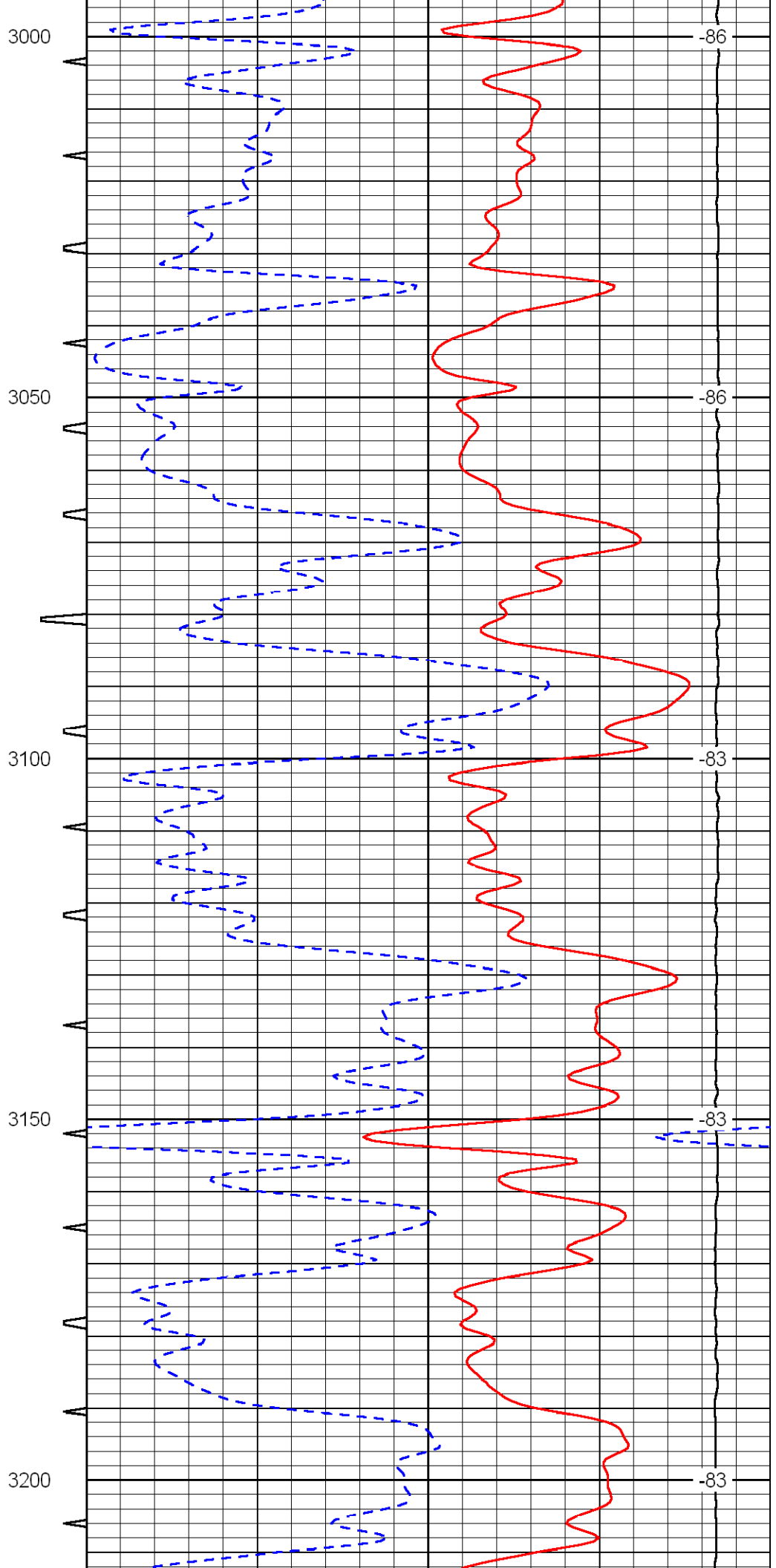
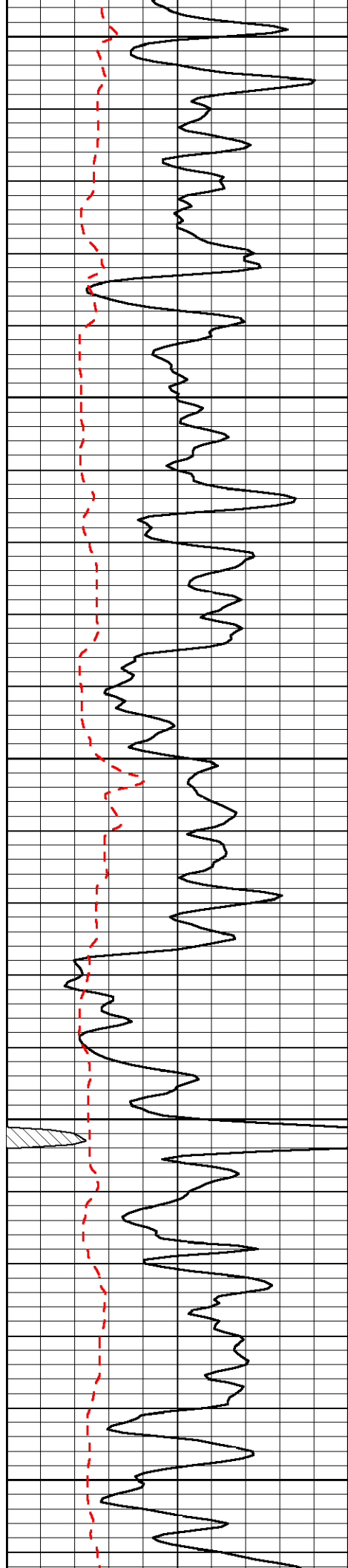


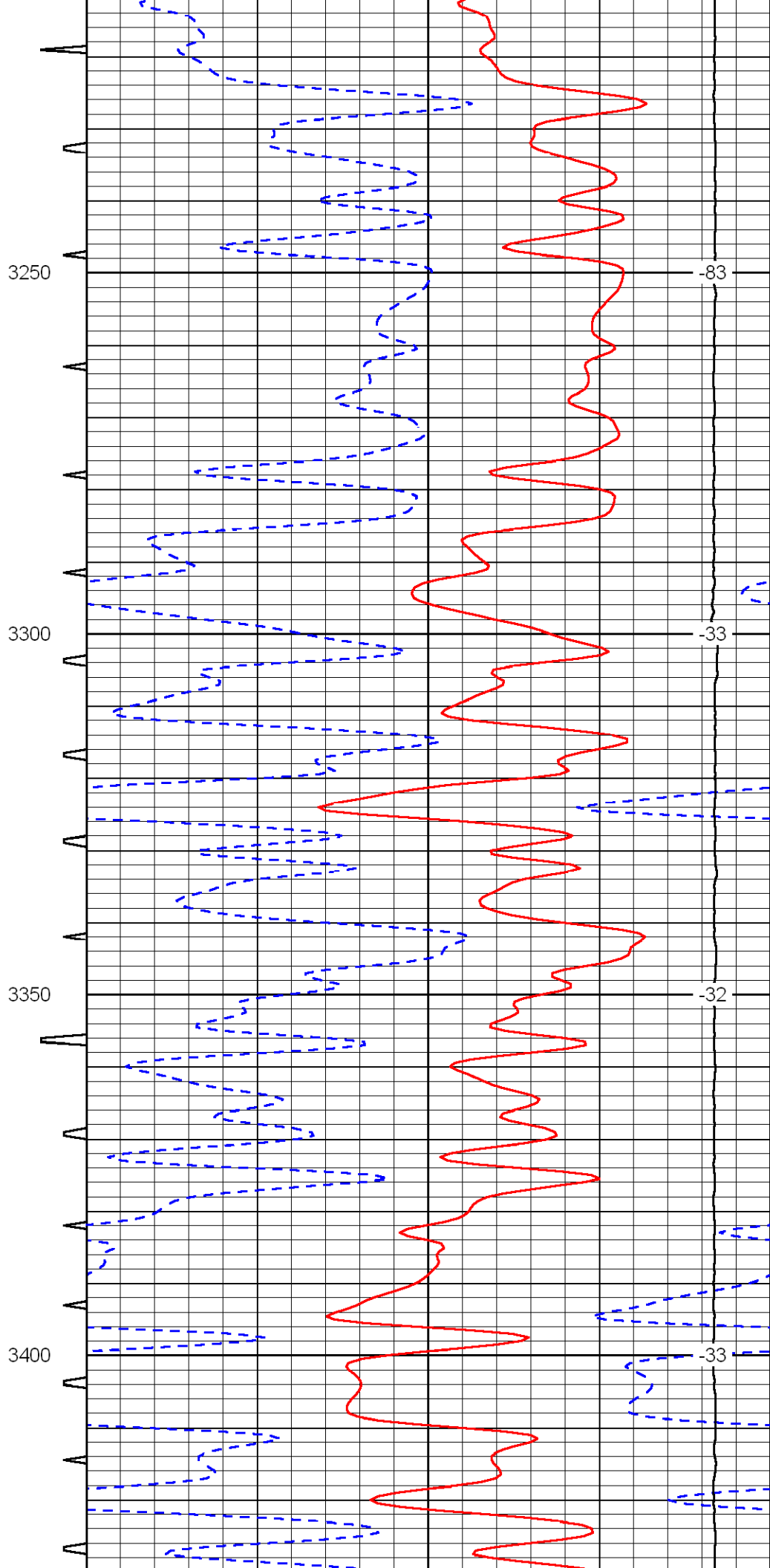
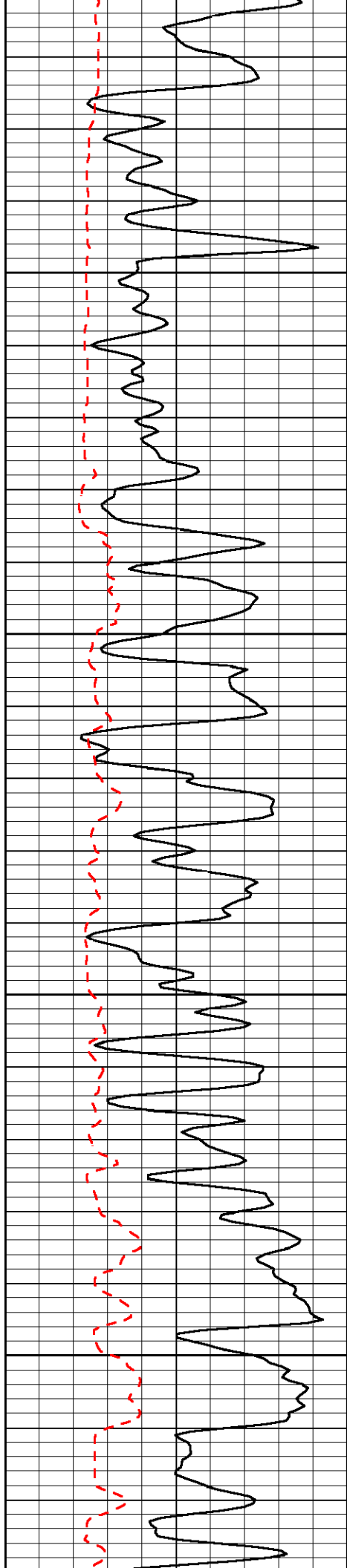


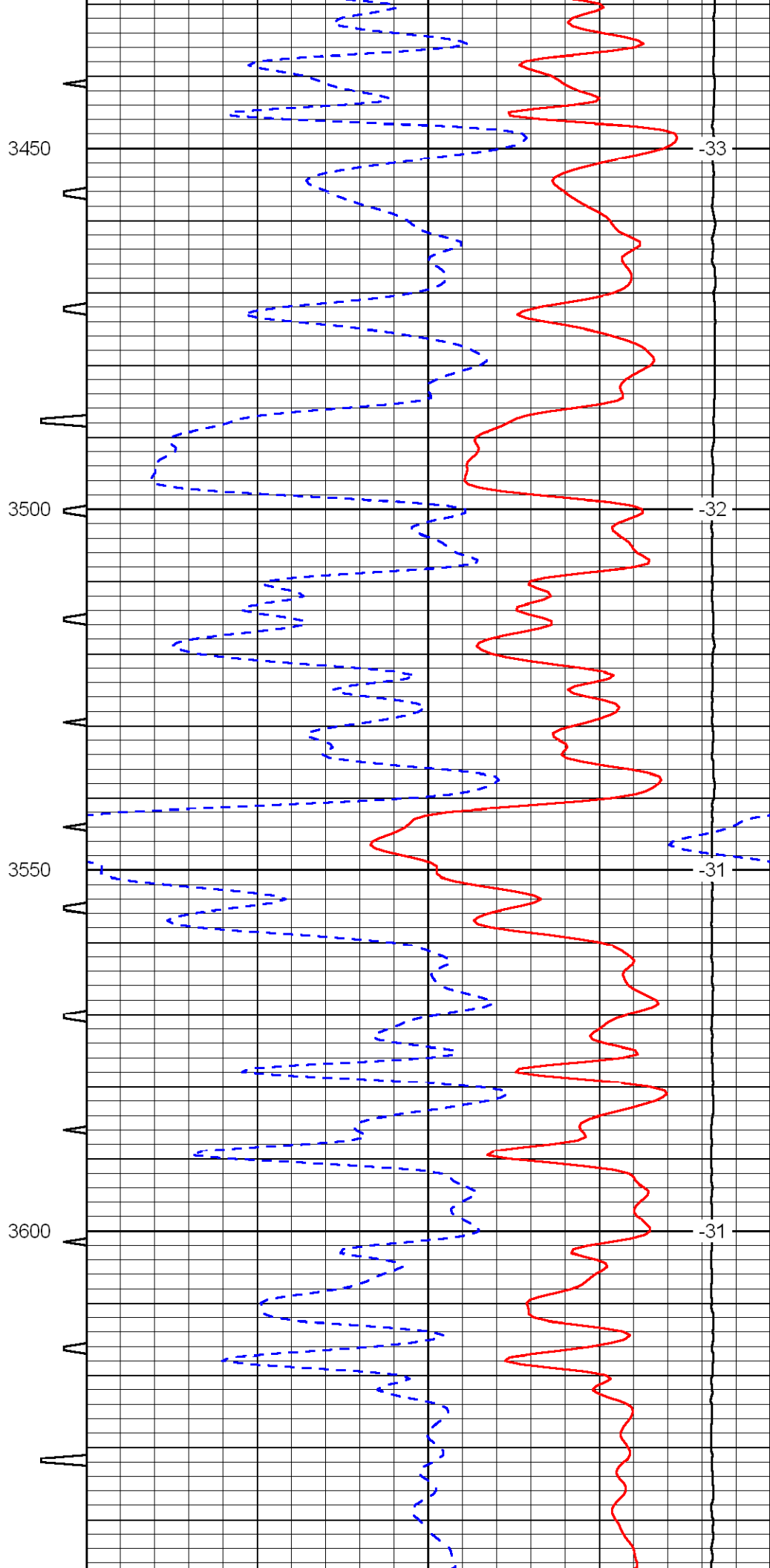
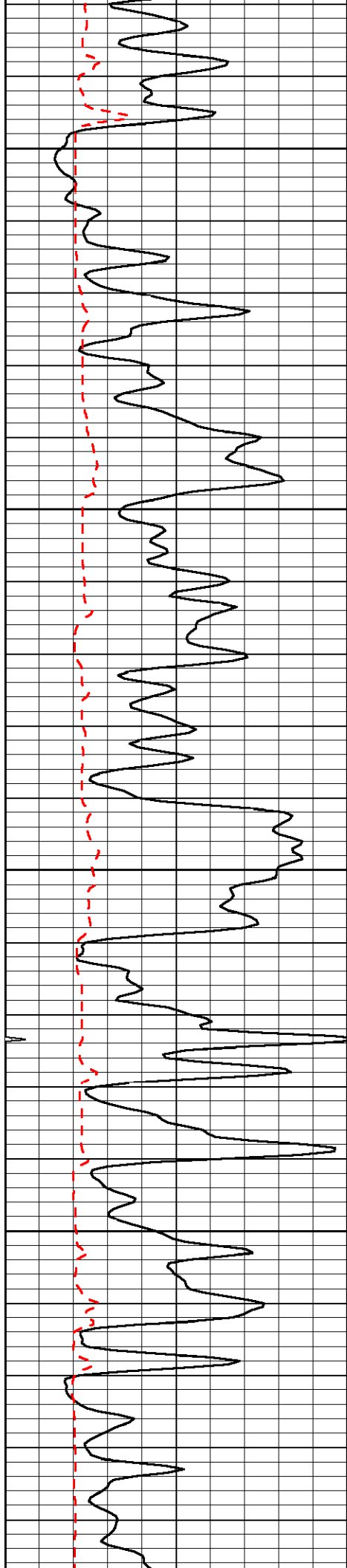


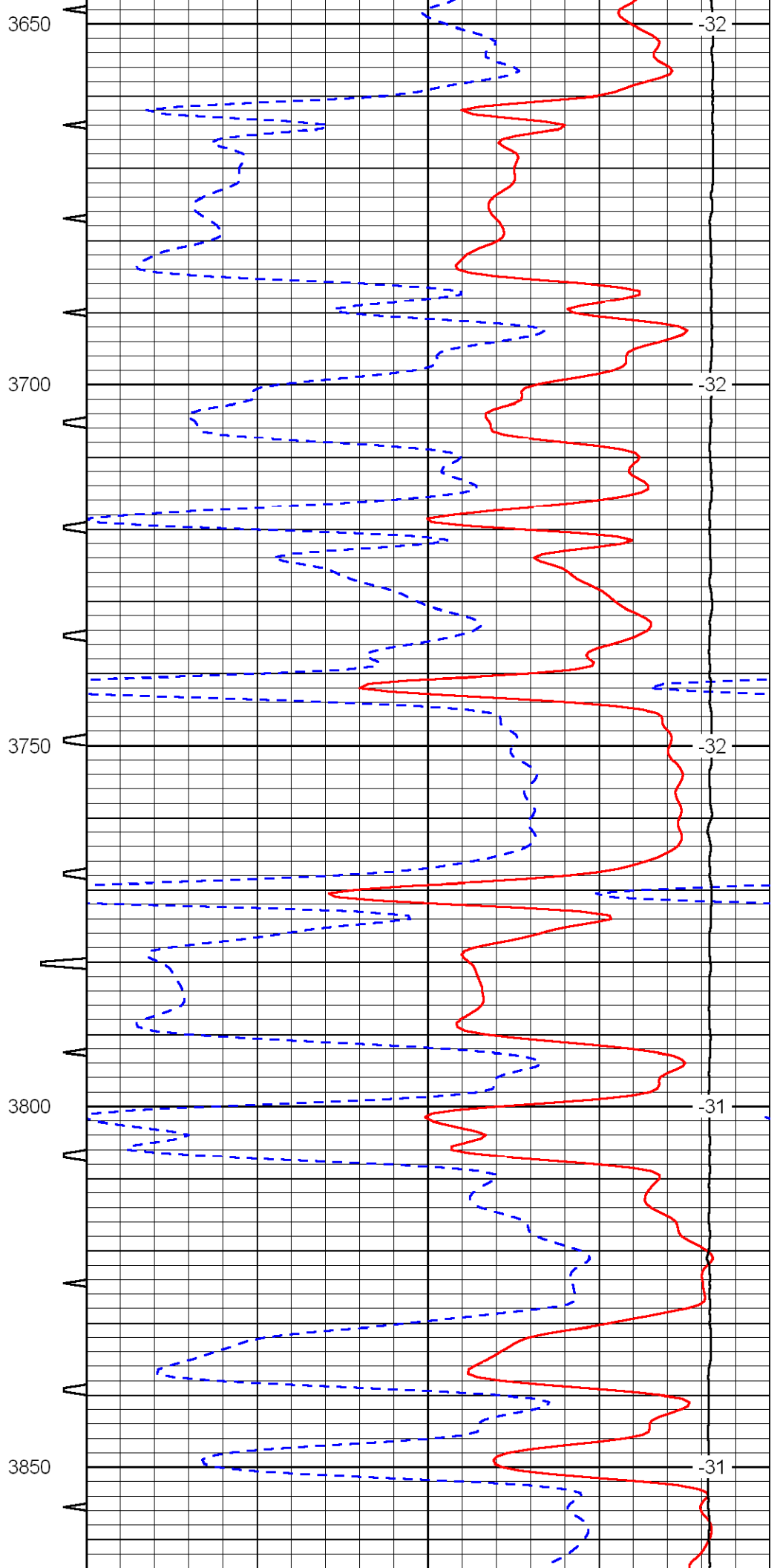
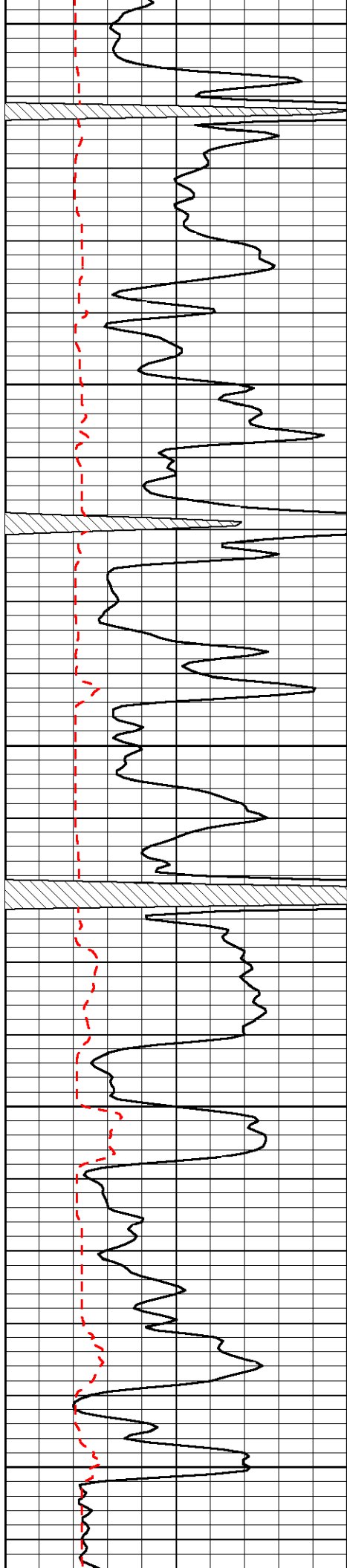


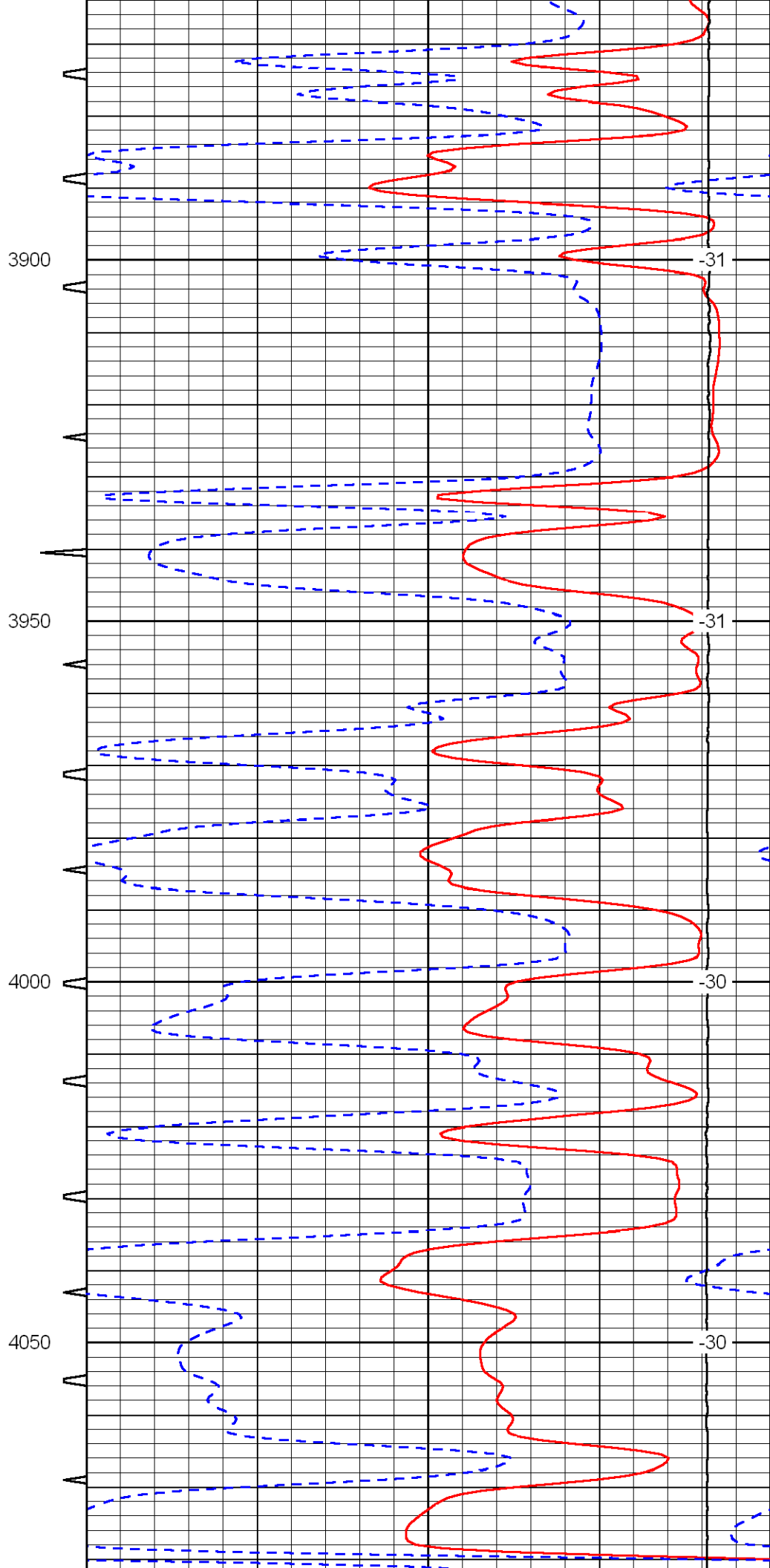
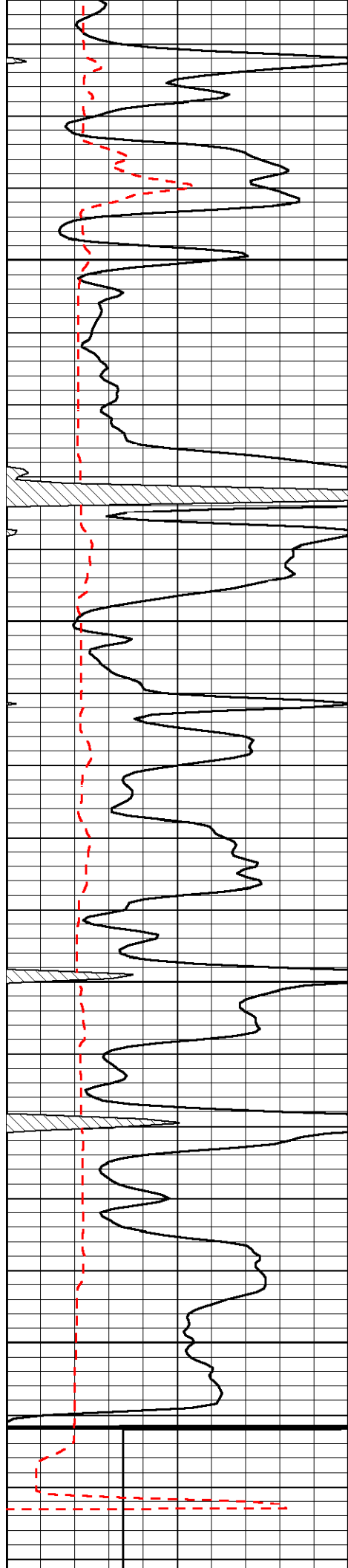


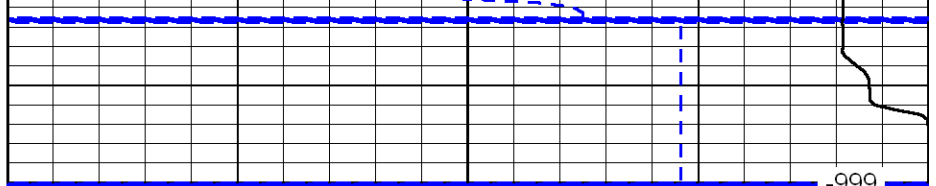
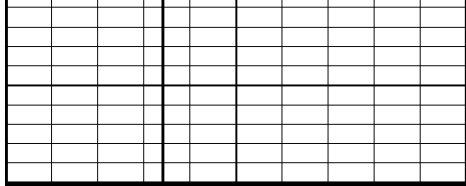












0	Gamma Ray	150	Sonic Int	4100	Delta Time (usec/ft) (usec/ft)	140	40
150	Gamma Ray	300	5 (msec) 0	30	SPOR (pu)	15000	-10
6	Caliper (in)	16			LTEN (lb) (lb)		0

							LSPD (ft/min)
--	--	--	--	--	--	--	------------------