



Microresistivity Log

DIGITAL LOG (785) 625-3858

API No.	15-065-23,614-00-00		
Company	H & M Petroleum Corporation		
Well	Oil Creek No. 2		
Field	Wildcat		
County	Graham	State	Kansas
Location	2143' FNL & 725' FWL		
Sec: 3	Twp: 9S	Rge: 25W	Other Services CNL/CDL DIL/BHCS
Permanent Datum	Ground Level	Elevation 2505	Elevation
Log Measured From	Kelly Bushing	5 Ft. Above Perm. Datum	K.B. 2510
Drilling Measured From	Kelly Bushing		D.F. 2505
			G.L. 2505

Date	02/03/2010	
Run Number	Two	
Depth Driller	4080	
Depth Logger	4087	
Bottom Logged Interval	4086	
Top Log Interval	3300	
Casing Driller	8.625 @ 221	
Casing Logger	220	
Bit Size	7.875	
Type Fluid in Hole	Chemical	
Salinity, ppm CL	1.500	
Density / Viscosity	9.4	51
pH / Fluid Loss	11.0	51
Source of Sample	Flowline	
Rm @ Meas. Temp	1.2 @ 65	
Rmf @ Meas. Temp	.9 @ 65	
Rmc @ Meas. Temp	1.62 @ 65	
Source of Rmf / Rmc	Charts	
Rm @ BHT	.66 @ 119	
Operating Rig Time	5 Hours	
Max Rec. Temp. F	119	
Equipment Number	10	
Location	Hays	
Recorded By	Jason Wellbrock	
Witnessed By	Richard Hall	

<<< Fold Here >>>

All interpretations are opinions based on inferences from electrical or other measurements and we cannot and do not guarantee the accuracy or correctness of any interpretation, and we shall not, except in the case of gross or willful negligence on our part, be liable or responsible for any loss, costs, damages, or expenses incurred or sustained by anyone resulting from any interpretation made by any of our officers, agents or employees. These interpretations are also subject to our general terms and conditions set out in our current Price Schedule.

Comments

Thank you for using Log-Tech, Inc.
(785) 625-3858

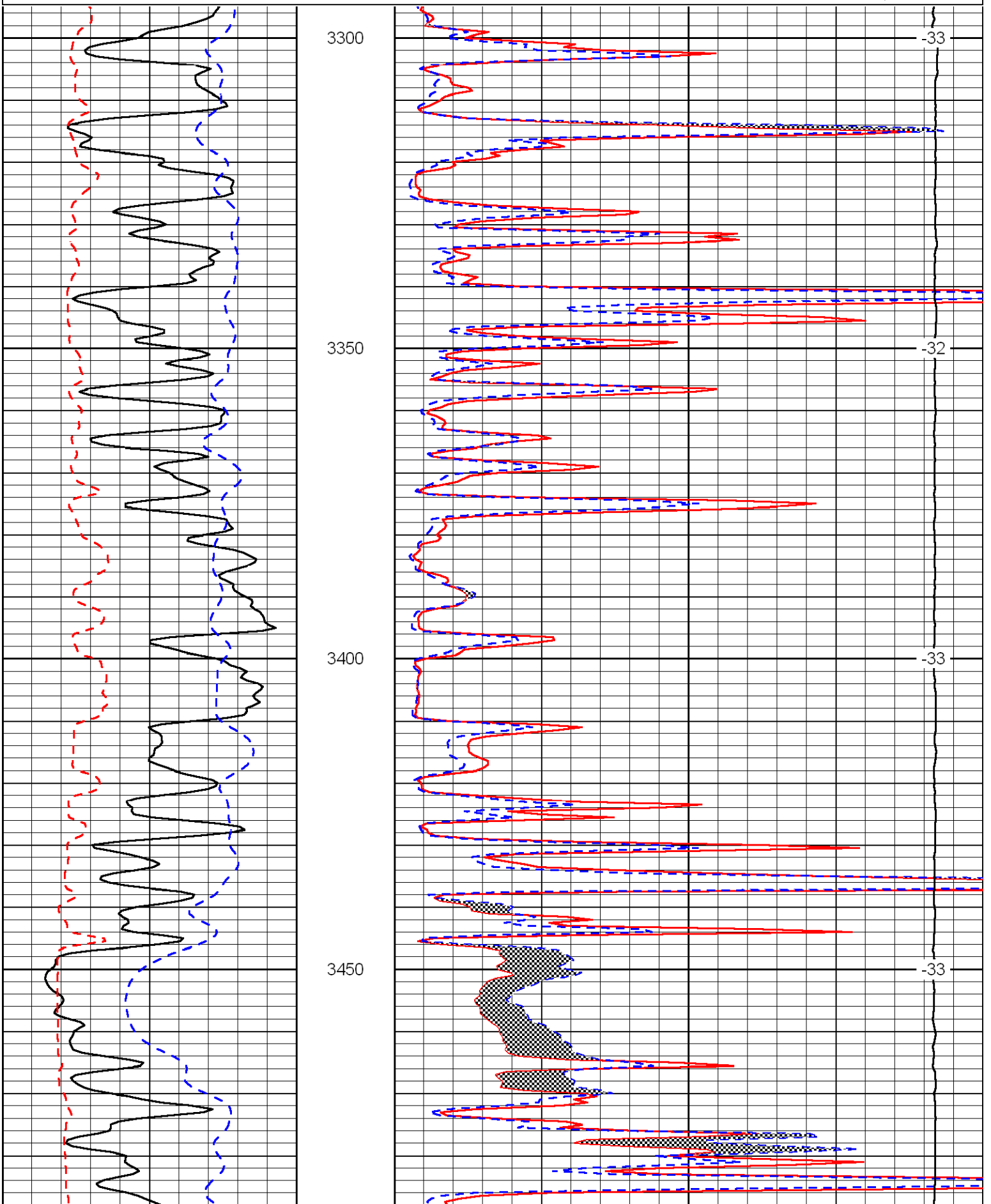
Morland 4S To L rd, 1W, 1N, N Into

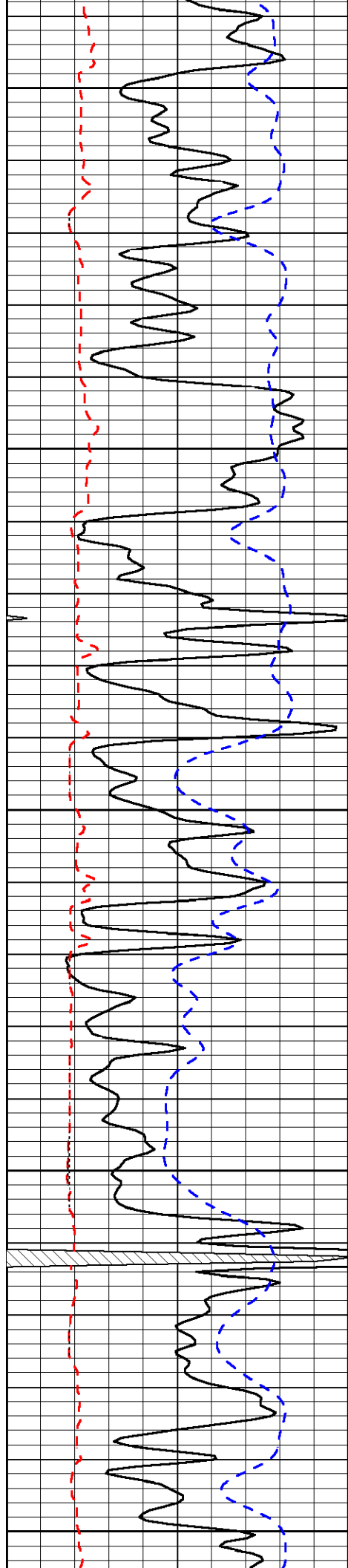
Database File: c:\warrior\data\h&m_oil creek no. 2\h and mhd.db
 Dataset Pathname: dil/stack
 Presentation Format: micro
 Dataset Creation: Wed Feb 03 02:01:59 2010
 Charted by: Depth in Feet scaled 1:240

0	Gamma Ray	150
6	Micro Log Caliper (in)	16
-200	SP (MV)	0

0	Micro Inverse 1 X 1 (Ohm-m)	40
0	Micro Normal 2" (Ohm-m)	40
15000	Line Weight (lb)	0

LSPD
(ft/min)





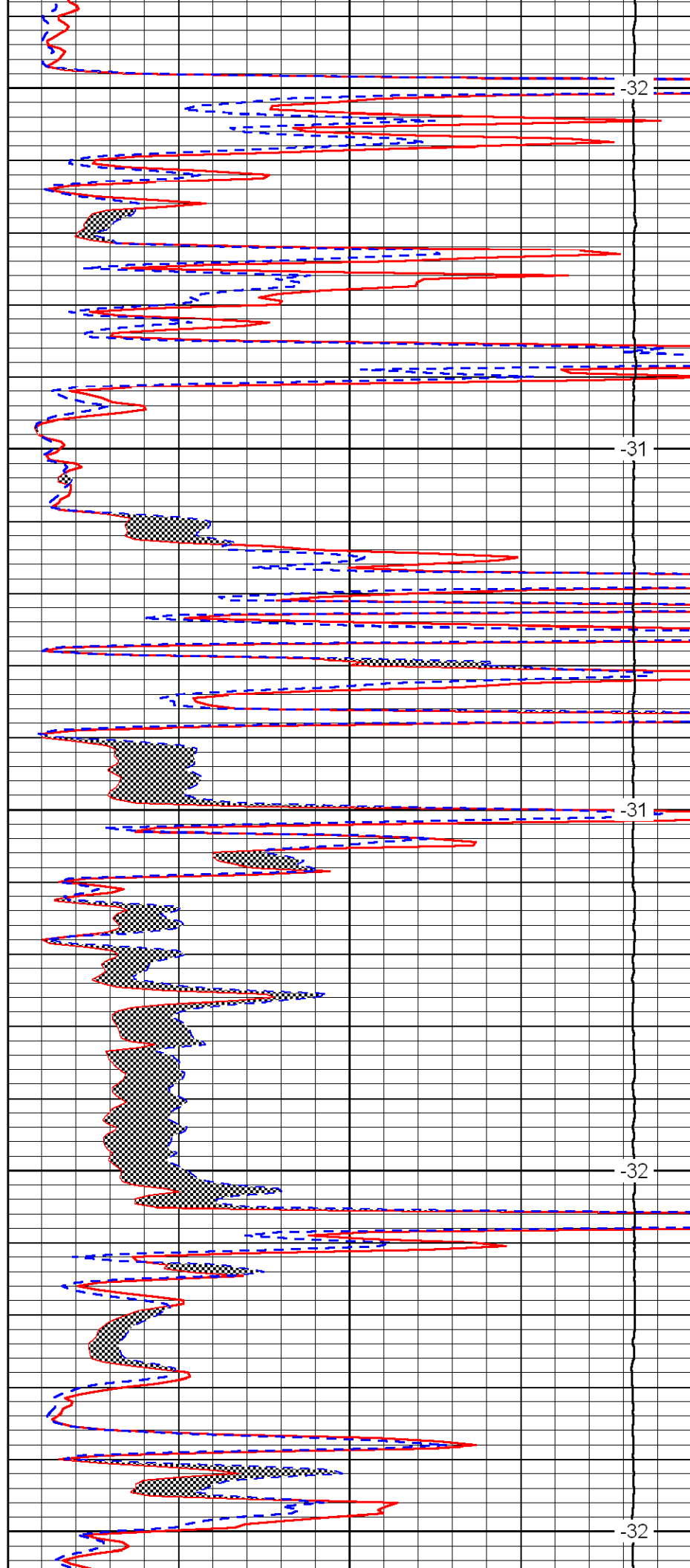
3500

3550

3600

3650

3700



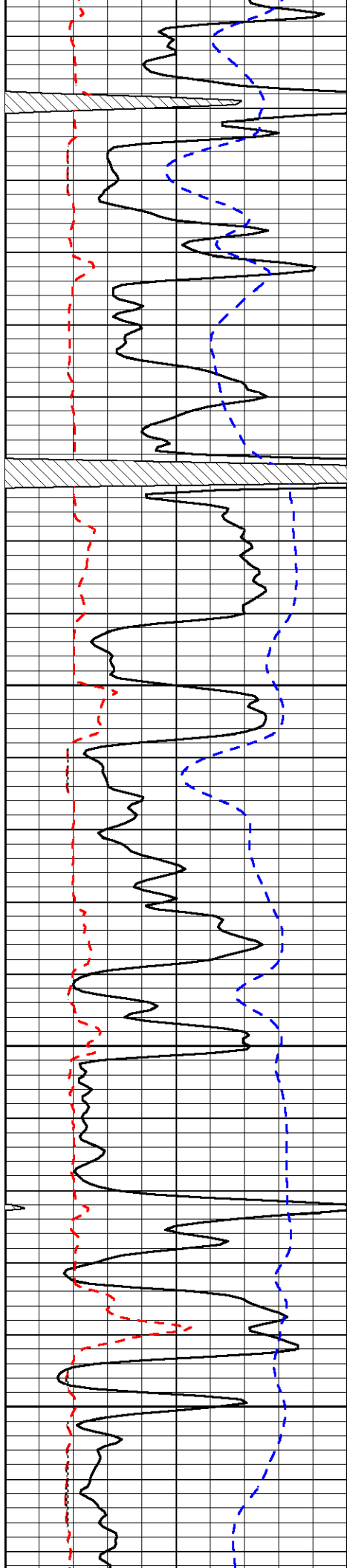
-32

-31

-31

-32

-32

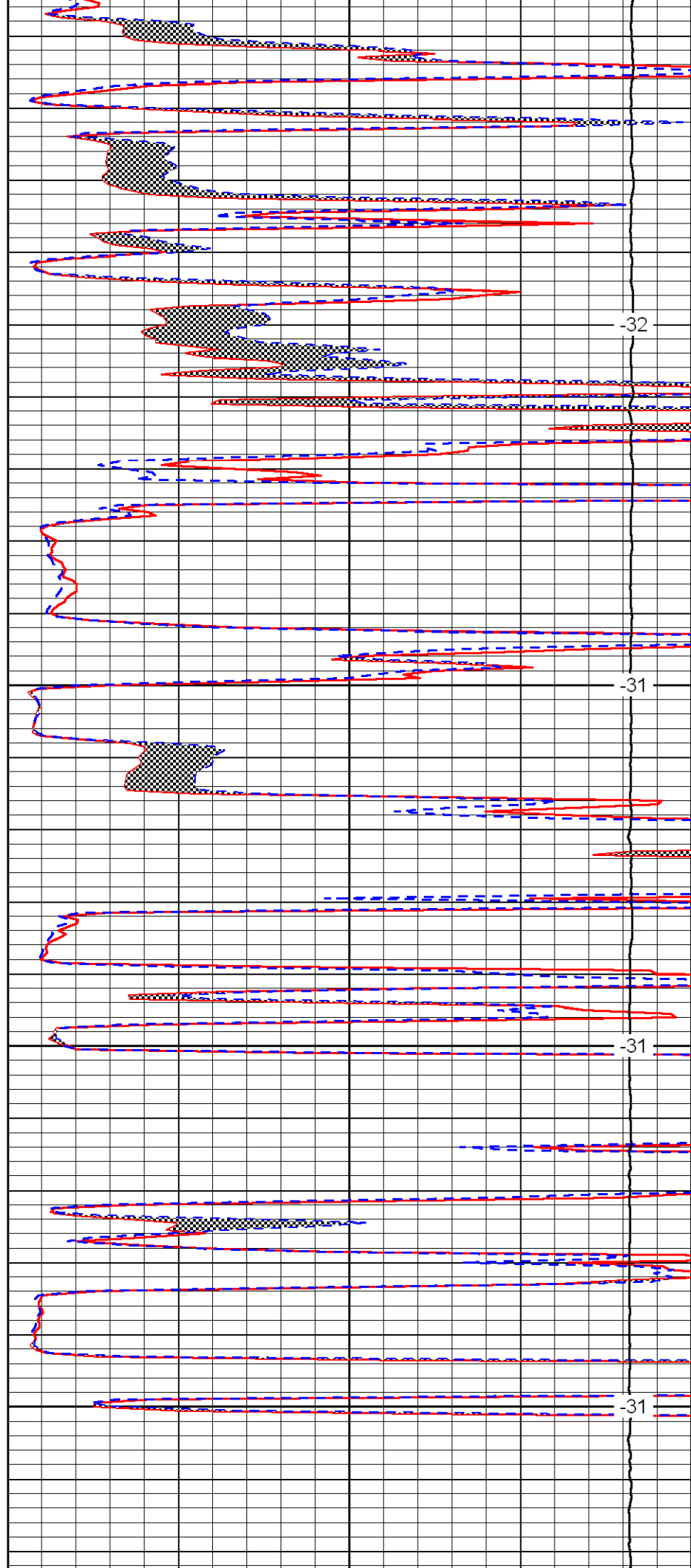


3750

3800

3850

3900

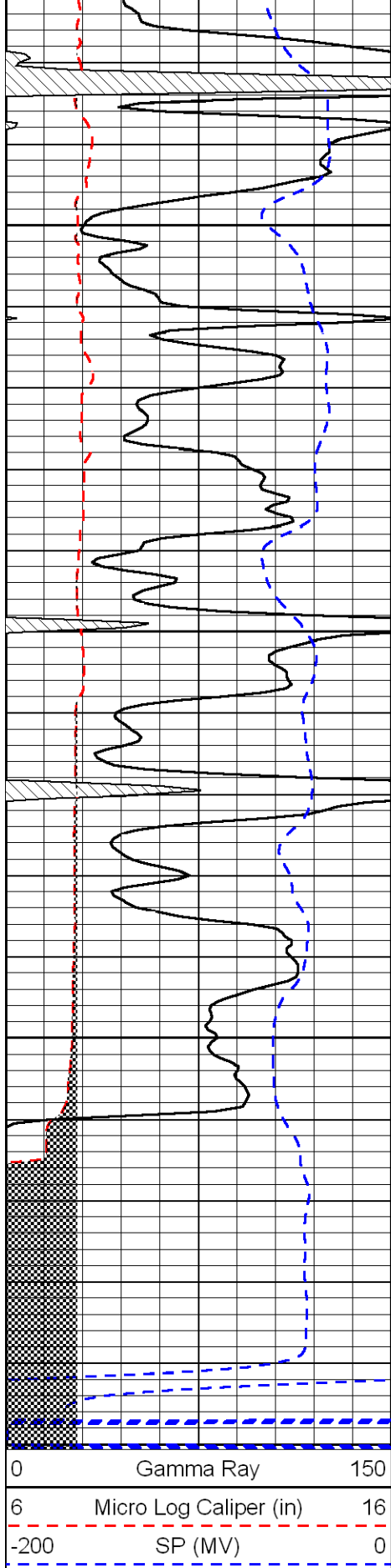


-32

-31

-31

-31



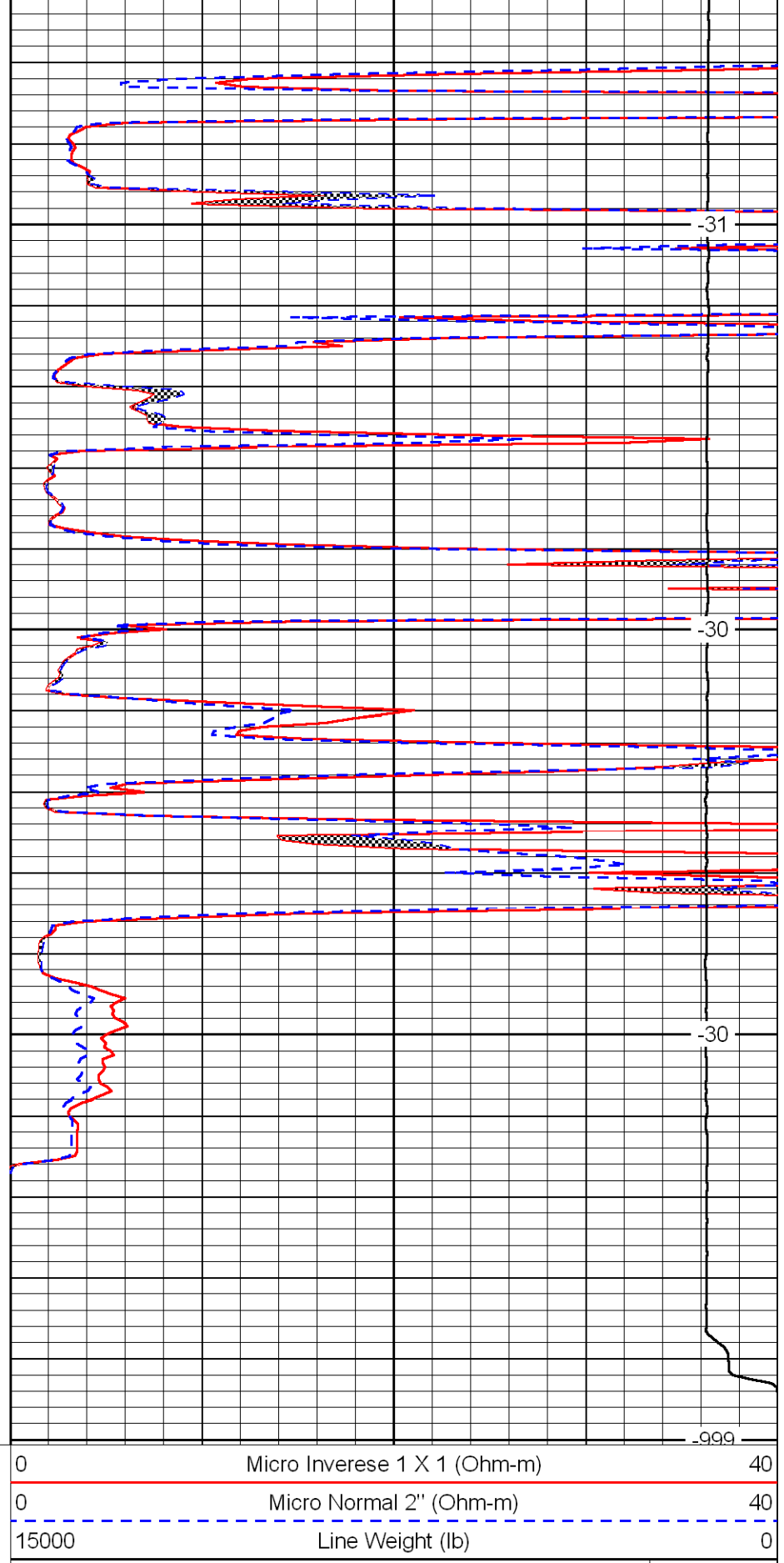
3950

4000

4050

4100

0	Gamma Ray	150
6	Micro Log Caliper (in)	16
-200	SP (MV)	0



-31

-30

-30

-999

0	Micro Inverse 1 X 1 (Ohm-m)	40
0	Micro Normal 2' (Ohm-m)	40
15000	Line Weight (lb)	0

LSPD
(ft/min)