



Dual Compensated  
Porosity Log

DIGITAL LOG (785) 625-3858

API No.	15-065-23,614-00-00	
Company	H & M Petroleum Corporation	
Well	Oil Creek No. 2	
Field	Wildcat	
County	Graham	
State	Kansas	
Location	2143' FNL & 725' FWL	
Sec: 3	Twp: 9S	Rge: 25W
Permament Datum	Ground Level	Elevation 2505
Log Measured From	Kelly Bushing	5 Ft. Above Perm. Datum
Drilling Measured From	Kelly Bushing	
Date	02/03/2010	
Run Number	One	
Type Log	CNL / CDL	
Depth Driller	4080	
Depth Logger	4087	
Bottom Logged Interval	4066	
Top Logged Interval	3300	
Type Fluid In Hole	Chemical	
Salinity, PPM CL	1,500	
Density	9.4	
Level	Full	
Max. Rec. Temp. F	119	
Operating Rig Time	5 Hours	
Equipment -- Location	10 Hays	
Recorded By	Jason Wellbrock	
Witnessed By	Richard Hall	

Run No	Bit	Borehole Record		Size	Wgt. 24#	Casing Record	
		From	To			From	To
1	12.25	00	221	8.625		00	221
2	7.875	221	4080				

<<< Fold Here >>>

All interpretations are opinions based on inferences from electrical or other measurements and we cannot and do not guarantee the accuracy or correctness of any interpretation, and we shall not, except in the case of gross or willful negligence on our part, be liable or responsible for any loss, costs, damages, or expenses incurred or sustained by anyone resulting from any interpretation made by any of our officers, agents or employees. These interpretations are also subject to our general terms and conditions set out in our current Price Schedule.

Comments

Thank you for using Log-Tech, Inc.  
(785) 625-3858

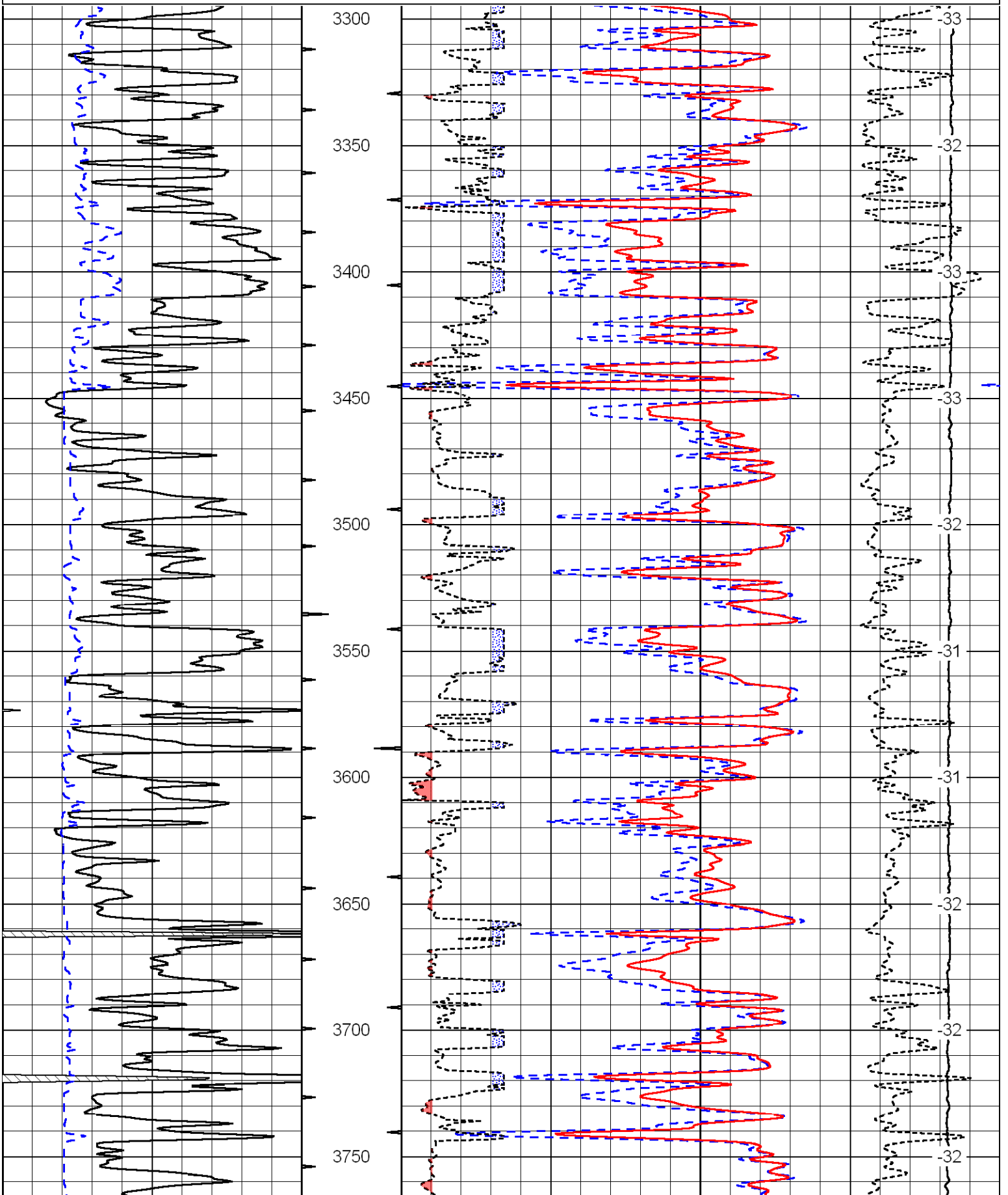
Morland 4S To L rd, 1W, 1N, N Into

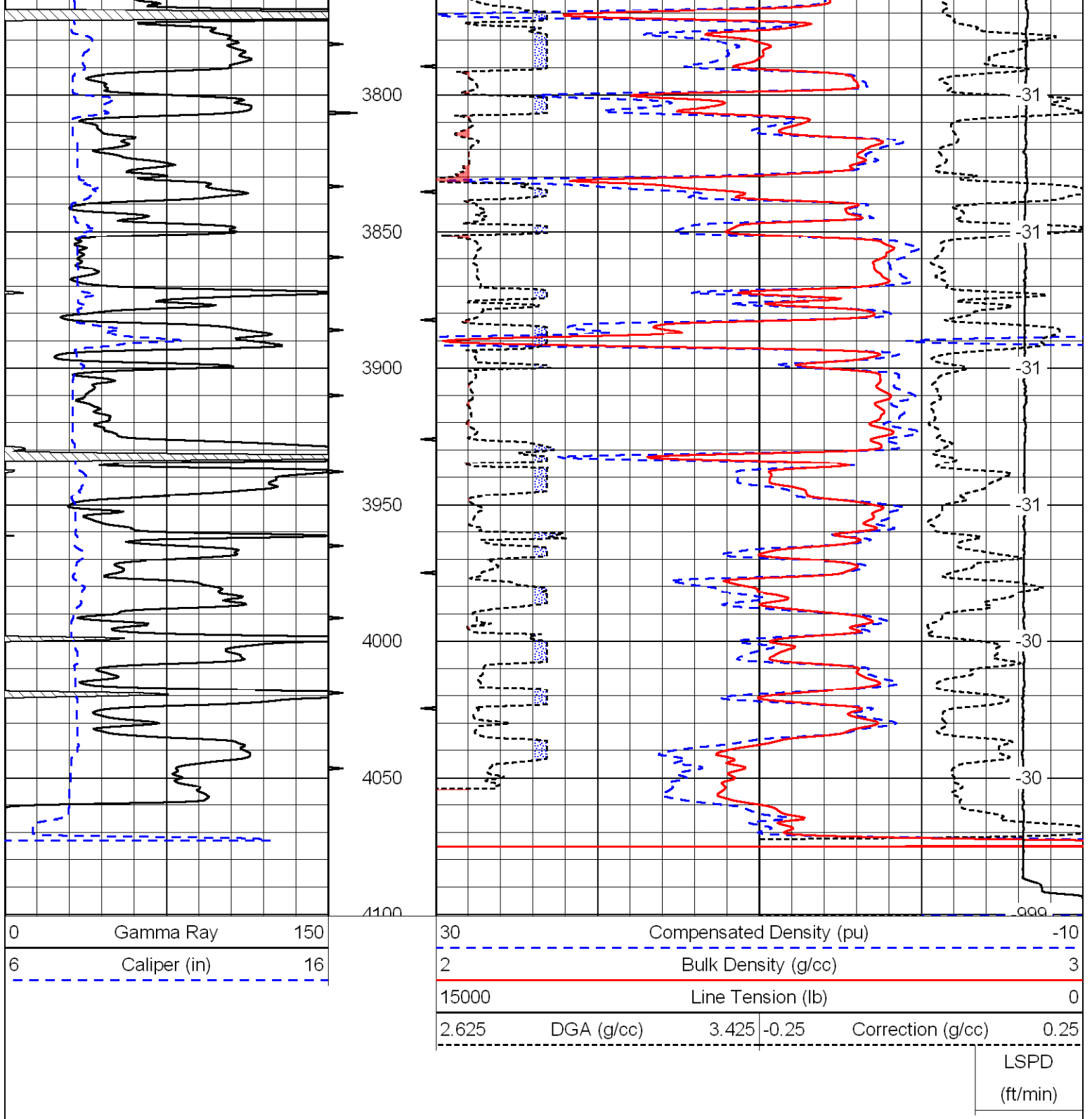
Database File: c:\warrior\data\h&m\_oil creek no. 2\h and mhd.db  
 Dataset Pathname: dil/stack  
 Presentation Format: cdl  
 Dataset Creation: Wed Feb 03 02:01:59 2010  
 Charted by: Depth in Feet scaled 1:600

0	Gamma Ray	150
6	Caliper (in)	16

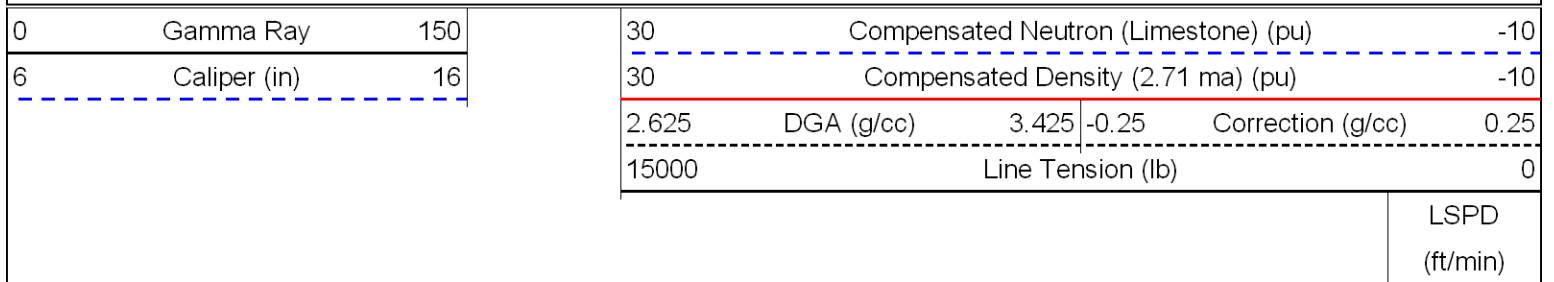
30	Compensated Density (pu)			-10	
2	Bulk Density (g/cc)			3	
15000	Line Tension (lb)			0	
2.625	DGA (g/cc)	3.425	-0.25	Correction (g/cc)	0.25

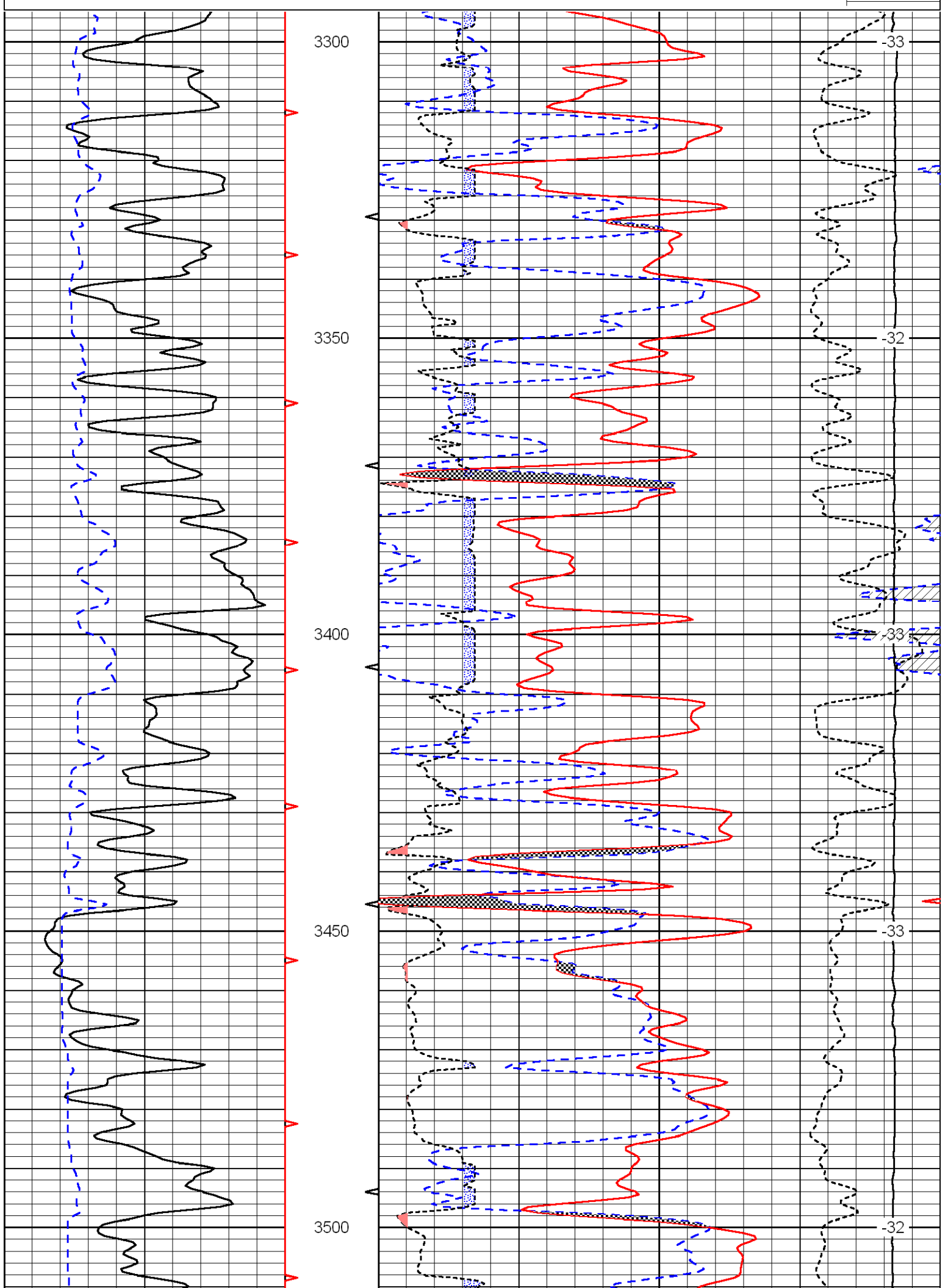
LSPD  
(ft/min)

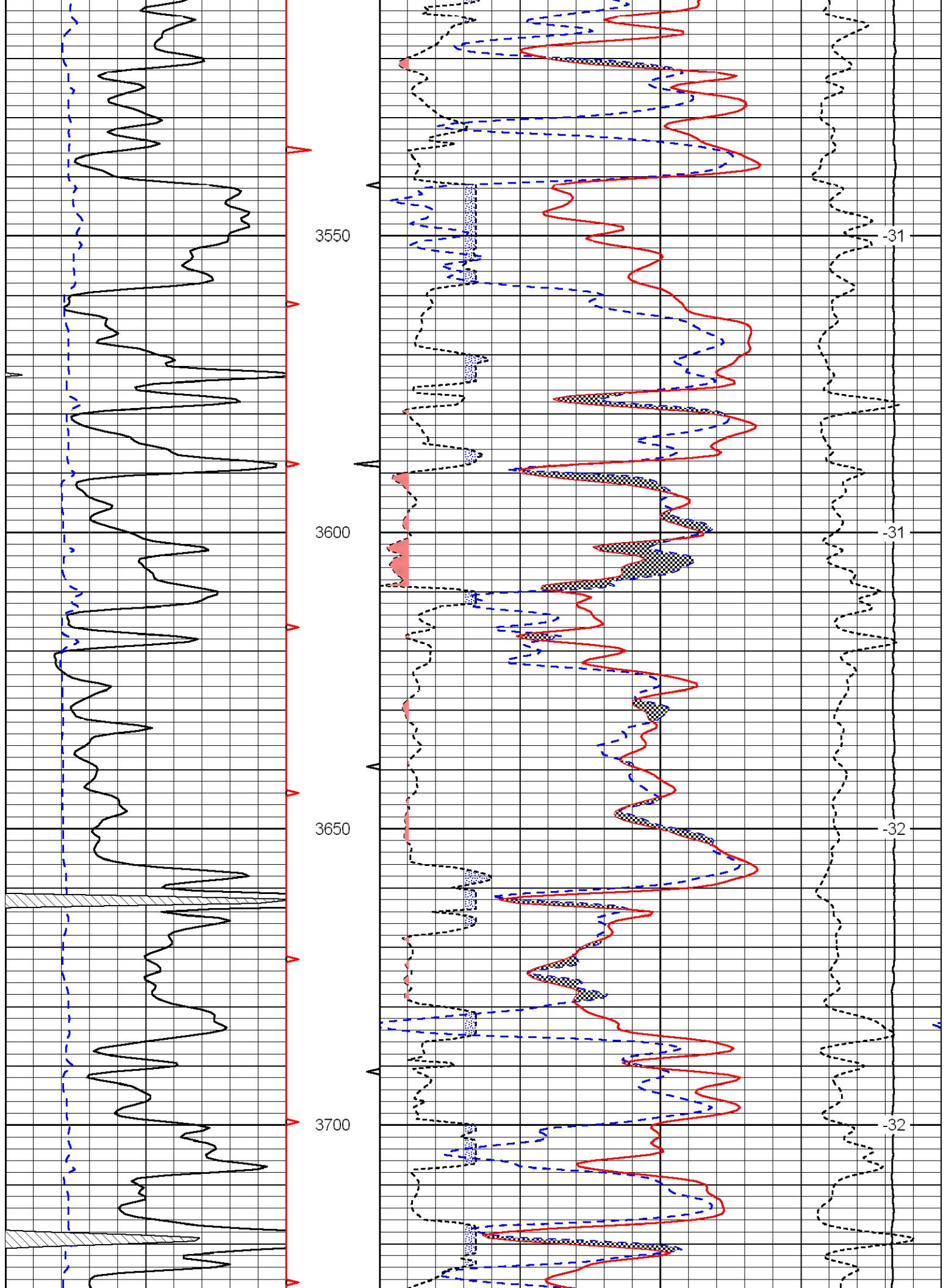


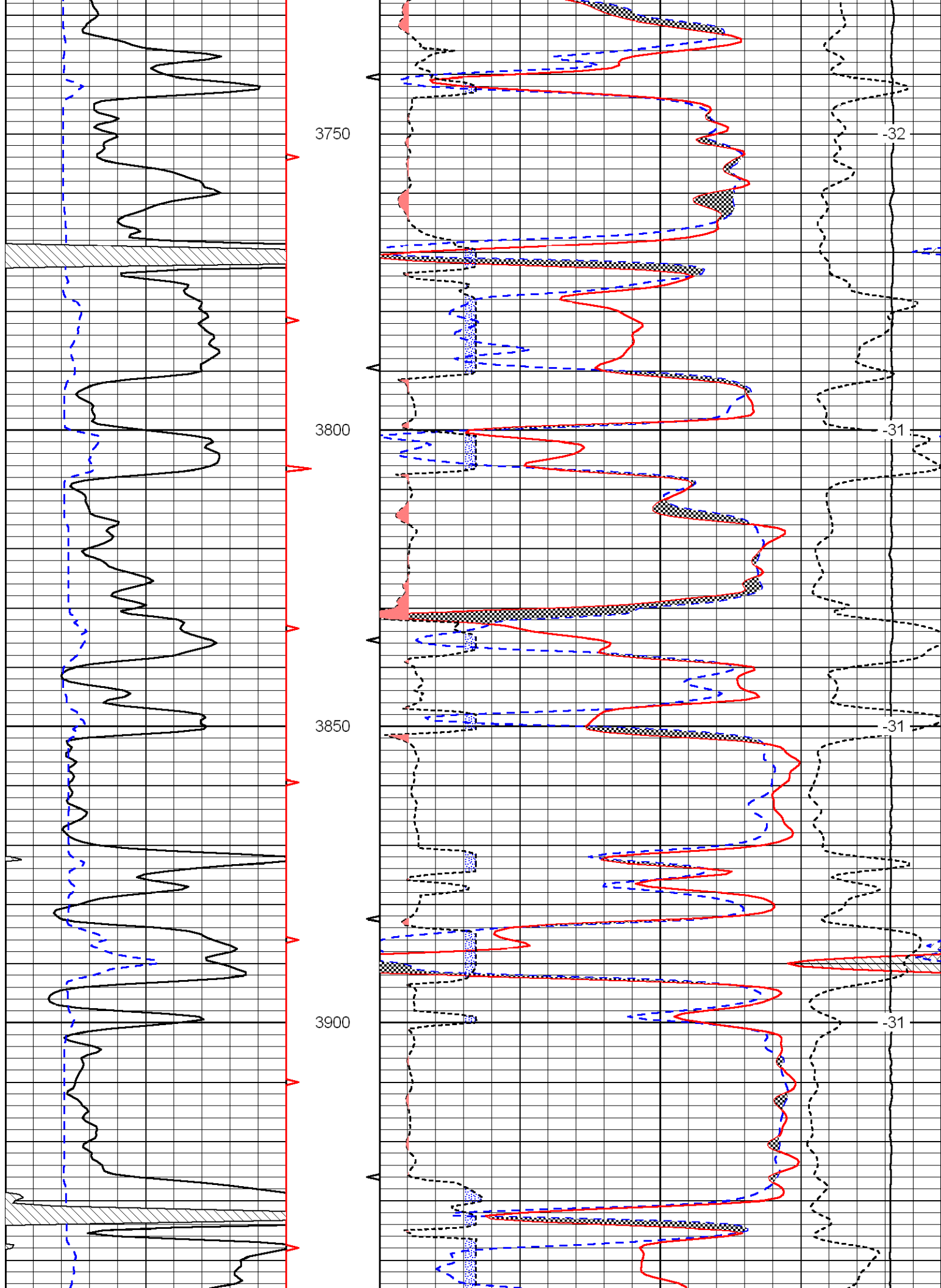


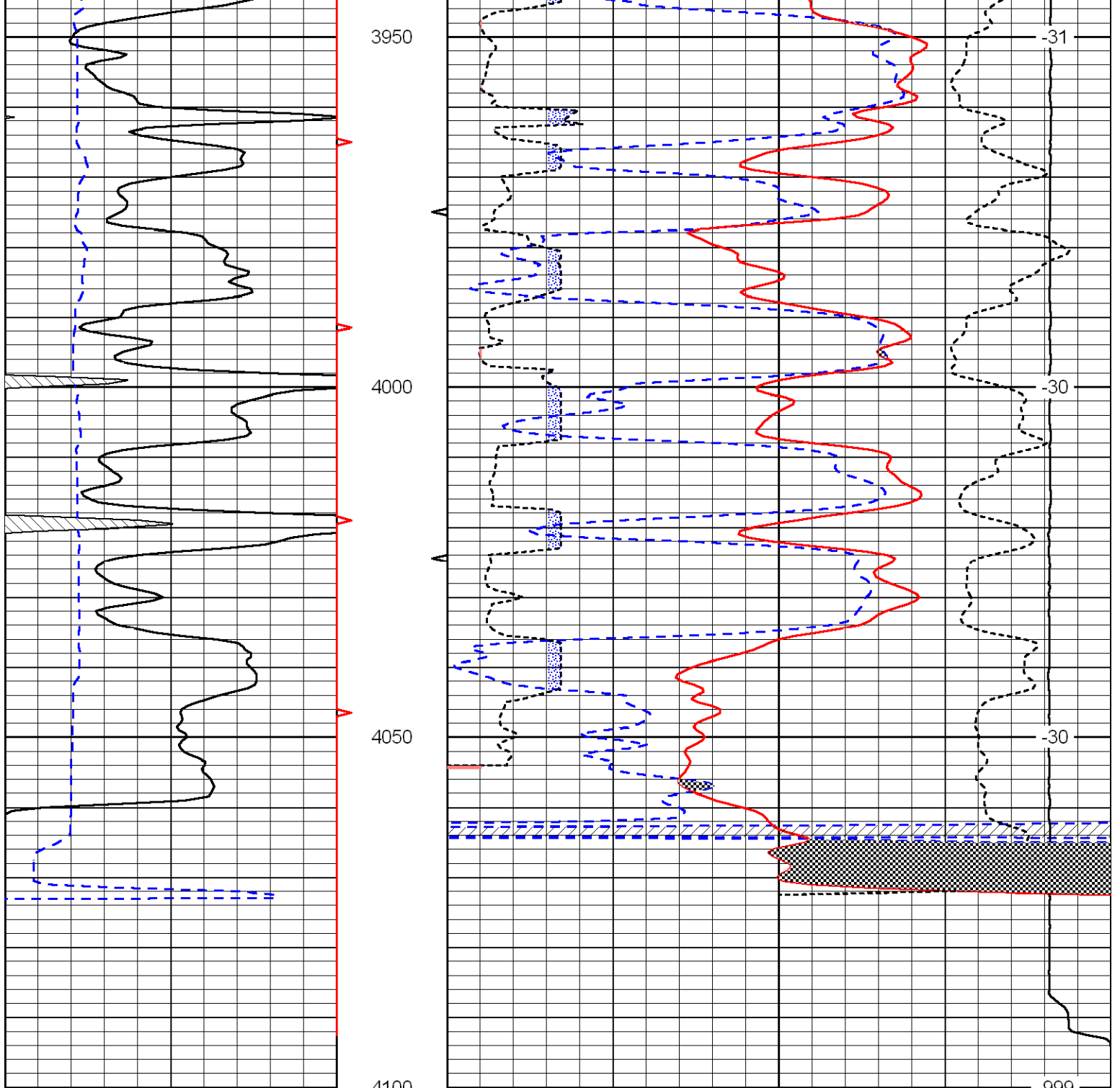
Database File: c:\warrior\data\h&m\_oil creek no. 2\h and mhd.db  
 Dataset Pathname: dil/stack  
 Presentation Format: cndlspec  
 Dataset Creation: Wed Feb 03 02:01:59 2010  
 Charted by: Depth in Feet scaled 1:240











0	Gamma Ray	150
6	Caliper (in)	16

30	Compensated Neutron (Limestone) (pu)			-10	
30	Compensated Density (2.71 ma) (pu)			-10	
2.625	DGA (g/cc)	3.425	-0.25	Correction (g/cc)	0.25
15000	Line Tension (lb)			0	

LSPD  
(ft/min)