



Dual Induction Log

DIGITAL LOG (785) 625-3858

API No.	15-065-23,614-00-00		
Company	H & M Petroleum Corporation		
Well	Oil Creek No. 2		
Field	Wildcat		
County	Graham	State	Kansas
Location	2143' FNL & 725' FWL		
Sec: 3	Twp: 9S	Rge: 25W	
Permanent Datum	Ground Level	Elevation 2505	Other Services CNL/CDL MEL/BHCS
Log Measured From	Kelly Bushing	5 Ft. Above Perm. Datum	K.B. 2510
Drilling Measured From	Frothkelly Bushing		D.F. 2505
			G.L. 2505

Date	02/03/2010	
Run Number	One	
Depth Driller	4080	
Depth Logger	4087	
Bottom Logged Interval	4086	
Top Log Interval	200	
Casing Driller	8.625 @ 221	
Casing Logger	220	
Bit Size	7.875	
Type Fluid in Hole	Chemical	
Salinity, ppm CL	1.500	
Density / Viscosity	9.4	51
pH / Fluid Loss	11.0	51
Source of Sample	Flowline	
Rm @ Meas. Temp	1.2 @ 65	
Rmf @ Meas. Temp	.9 @ 65	
Rmc @ Meas. Temp	1.62 @ 65	
Source of Rmf / Rmc	Charts	
Rm @ BHT	.66 @ 119	
Operating Rig Time	5 Hours	
Max Rec. Temp. F	119	
Equipment Number	10	
Location	Hays	
Recorded By	Jason Wellbrock	
Witnessed By	Richard Hall	

<<< Fold Here >>>

All interpretations are opinions based on inferences from electrical or other measurements and we cannot and do not guarantee the accuracy or correctness of any interpretation, and we shall not, except in the case of gross or willful negligence on our part, be liable or responsible for any loss, costs, damages, or expenses incurred or sustained by anyone resulting from any interpretation made by any of our officers, agents or employees. These interpretations are also subject to our general terms and conditions set out in our current Price Schedule.

Comments

Thank you for using Log-Tech, Inc.
(785) 625-3858

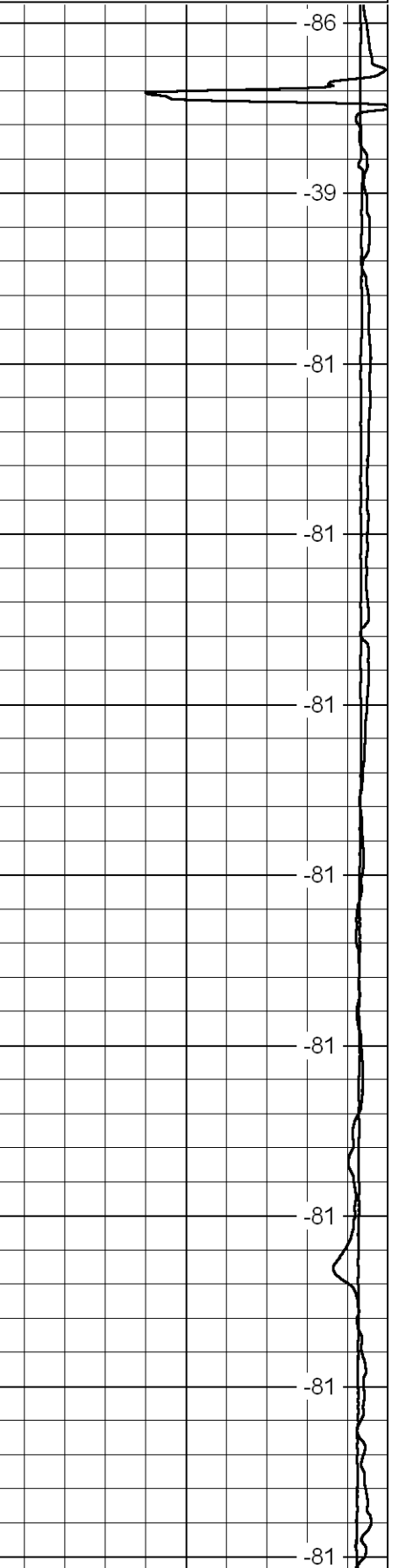
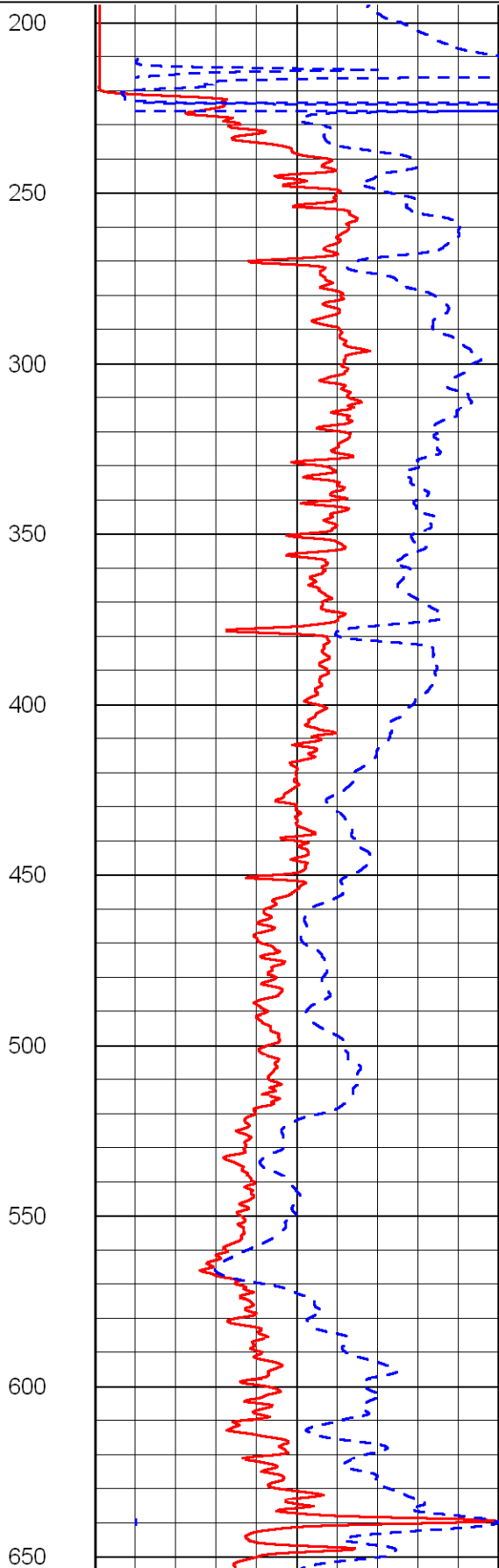
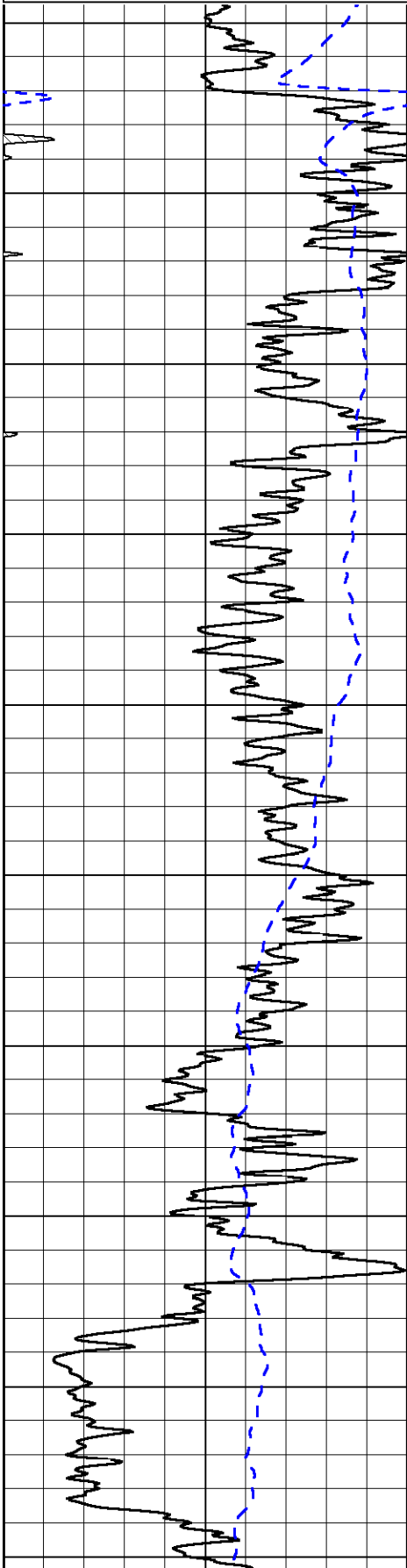
Morland 4S To L rd, 1W, 1N, N Into

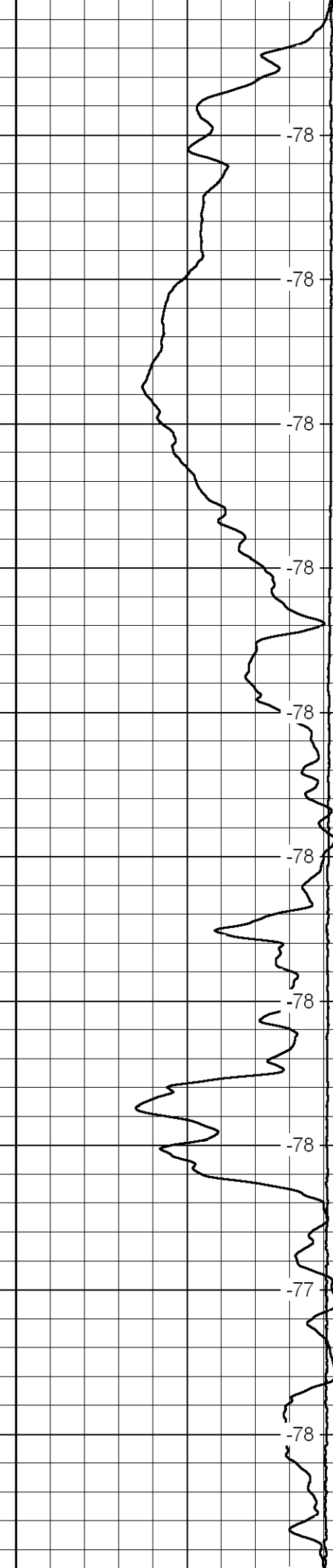
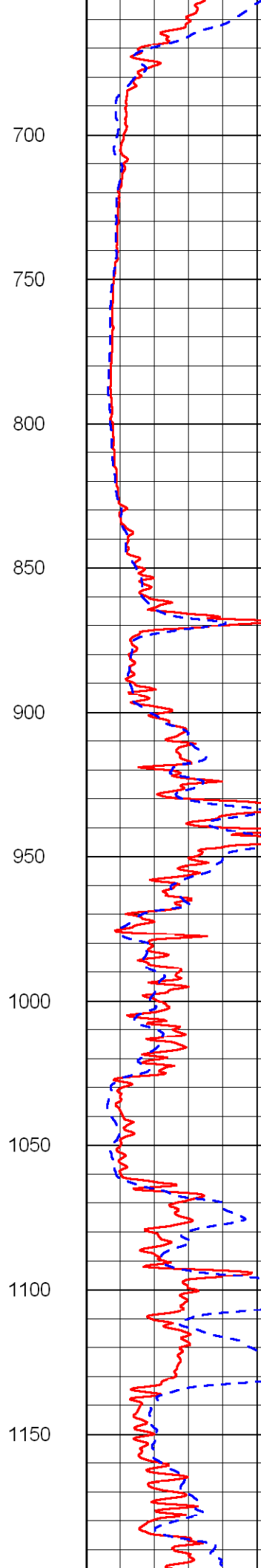
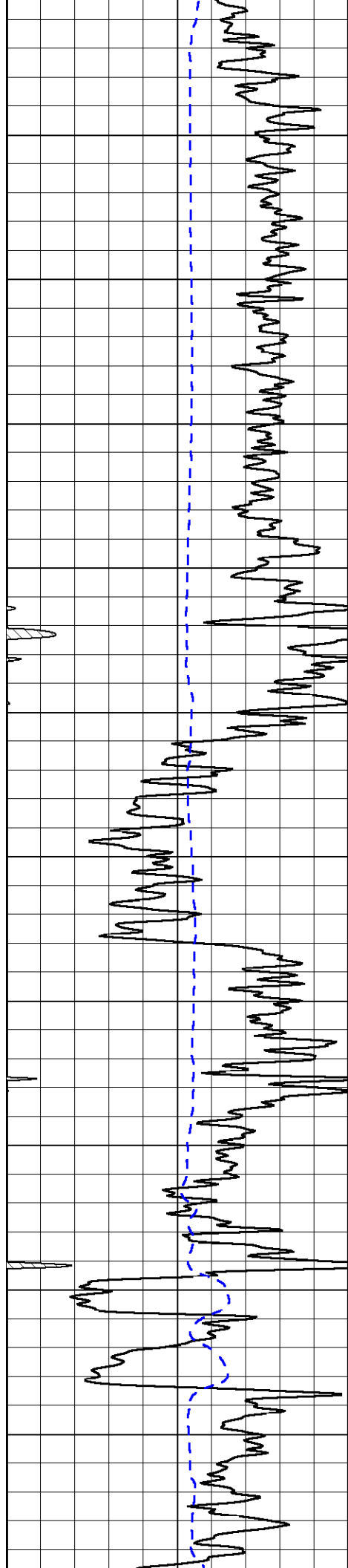
Database File: c:\warrior\data\h&m_oil creek no. 2\h and mhd.db
 Dataset Pathname: dil/stack
 Presentation Format: dil2in
 Dataset Creation: Wed Feb 03 02:01:59 2010
 Charted by: Depth in Feet scaled 1:600

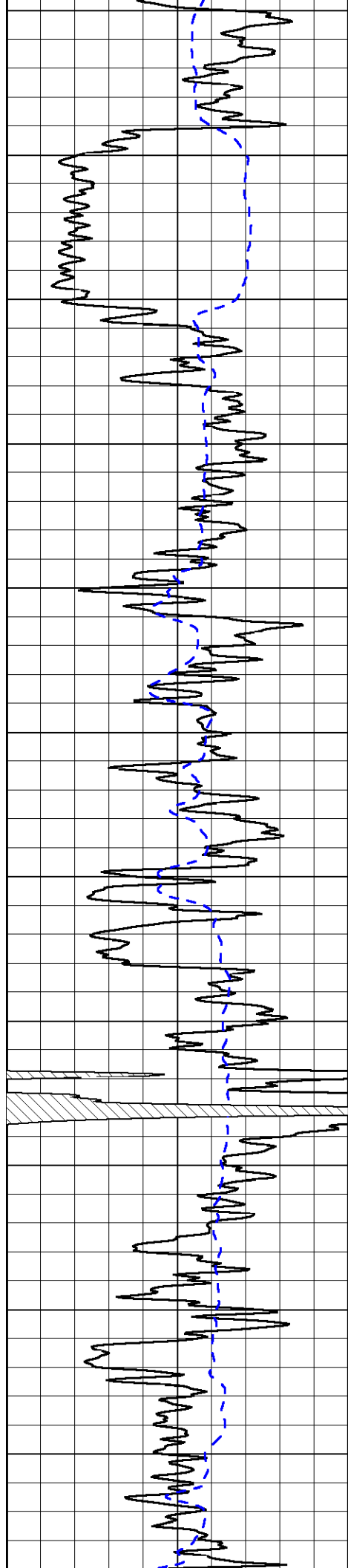
0 Gamma Ray 150
-200 SP (MV) 0

0 Shallow Resistivity (Ohm-m) 50
0 Deep Resistivity (Ohm-m) 50
1000 Conductivity (mmho/m) 0
15000 Line Tension (lb) 0
50 Shallow Resistivity (Ohm-m) 500
50 Deep Resistivity (Ohm-m) 500

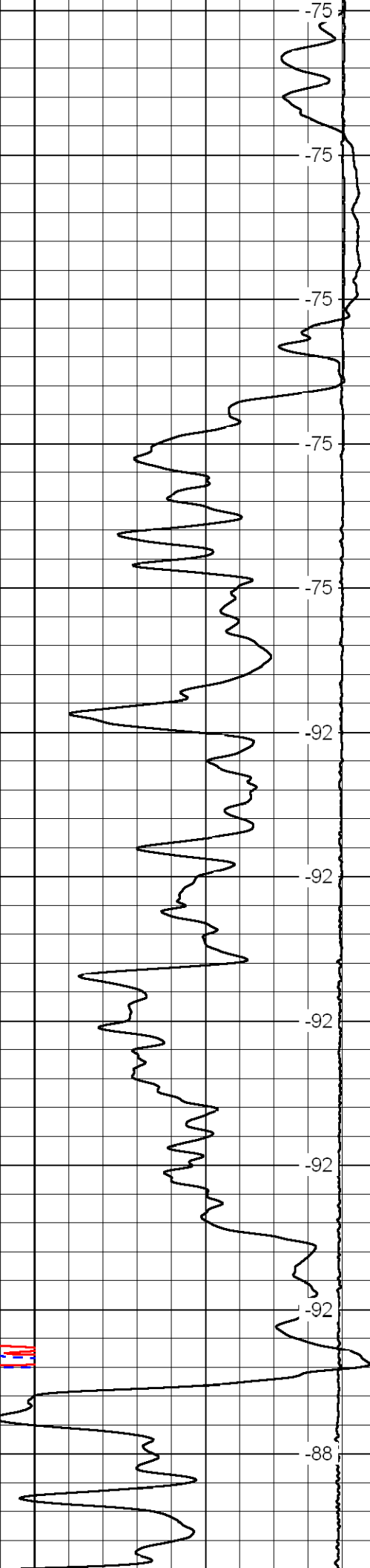
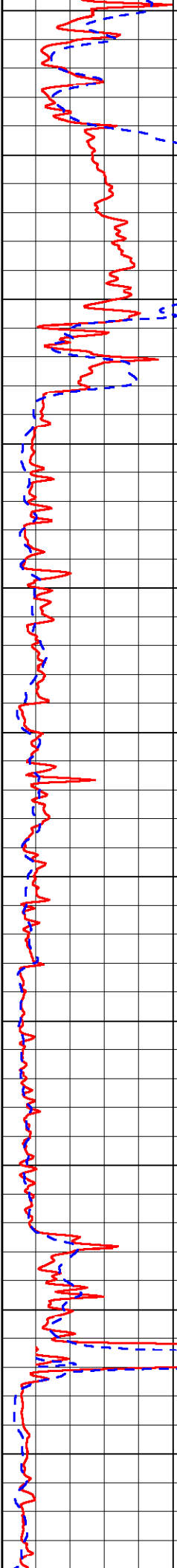
LSPD
(ft/min)



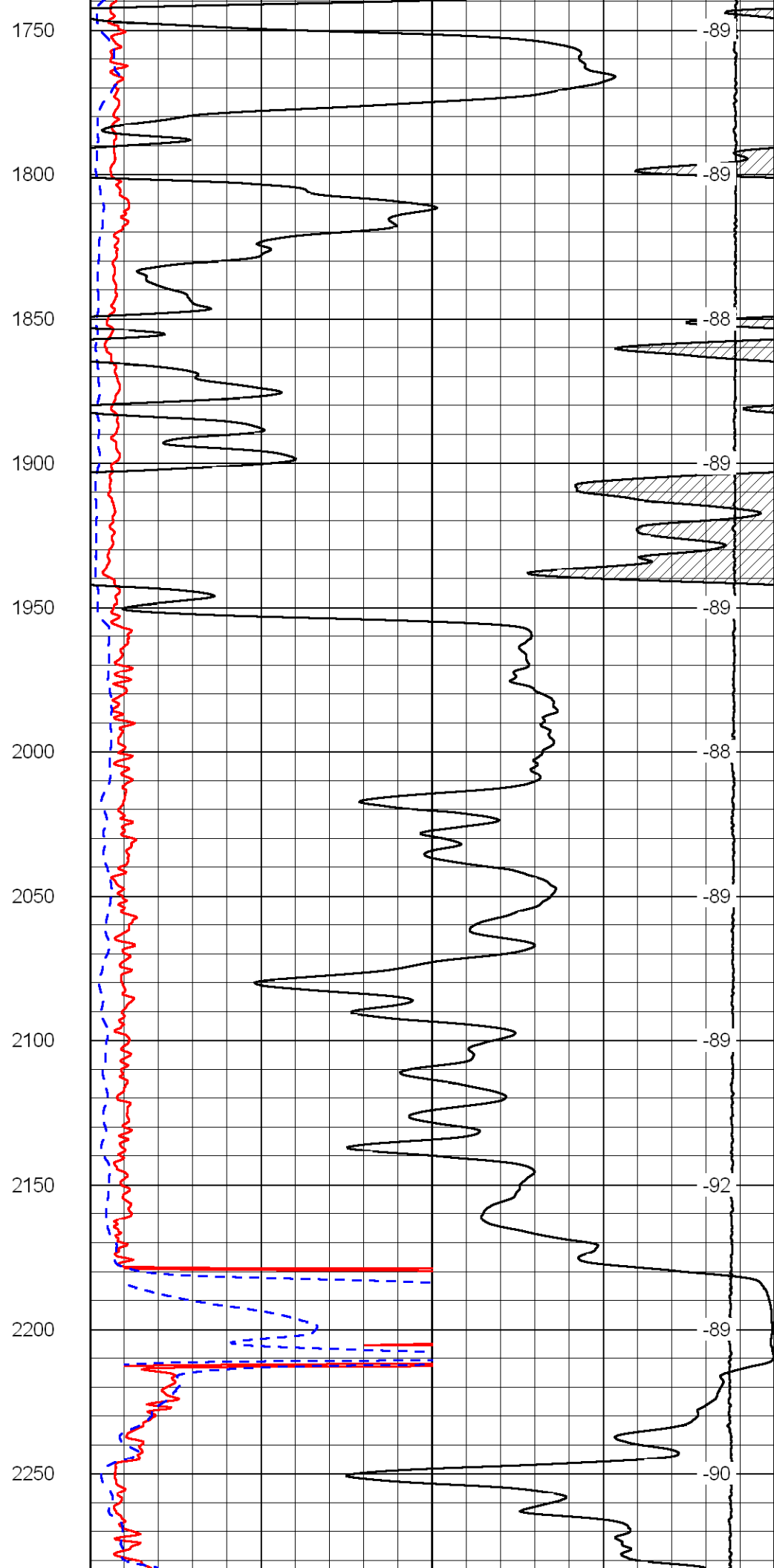
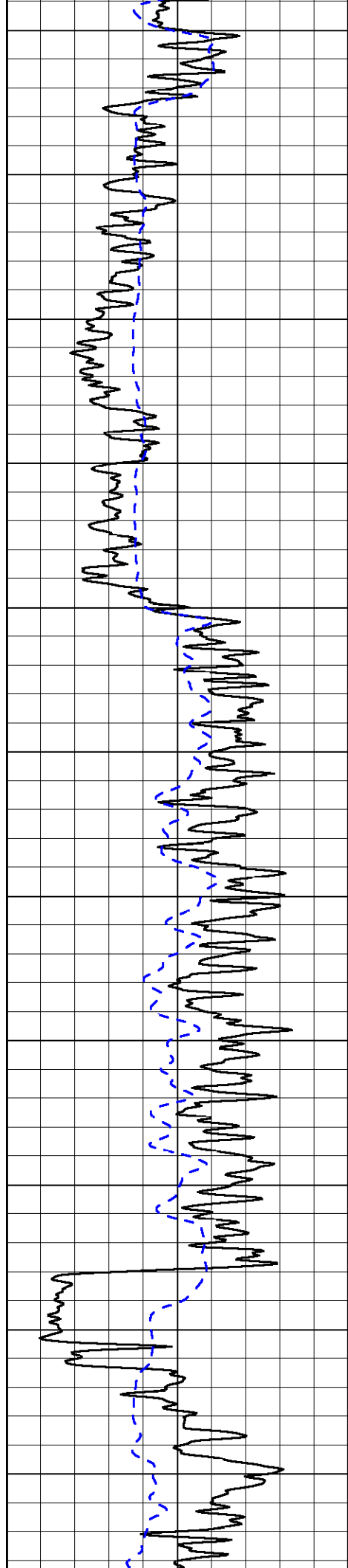


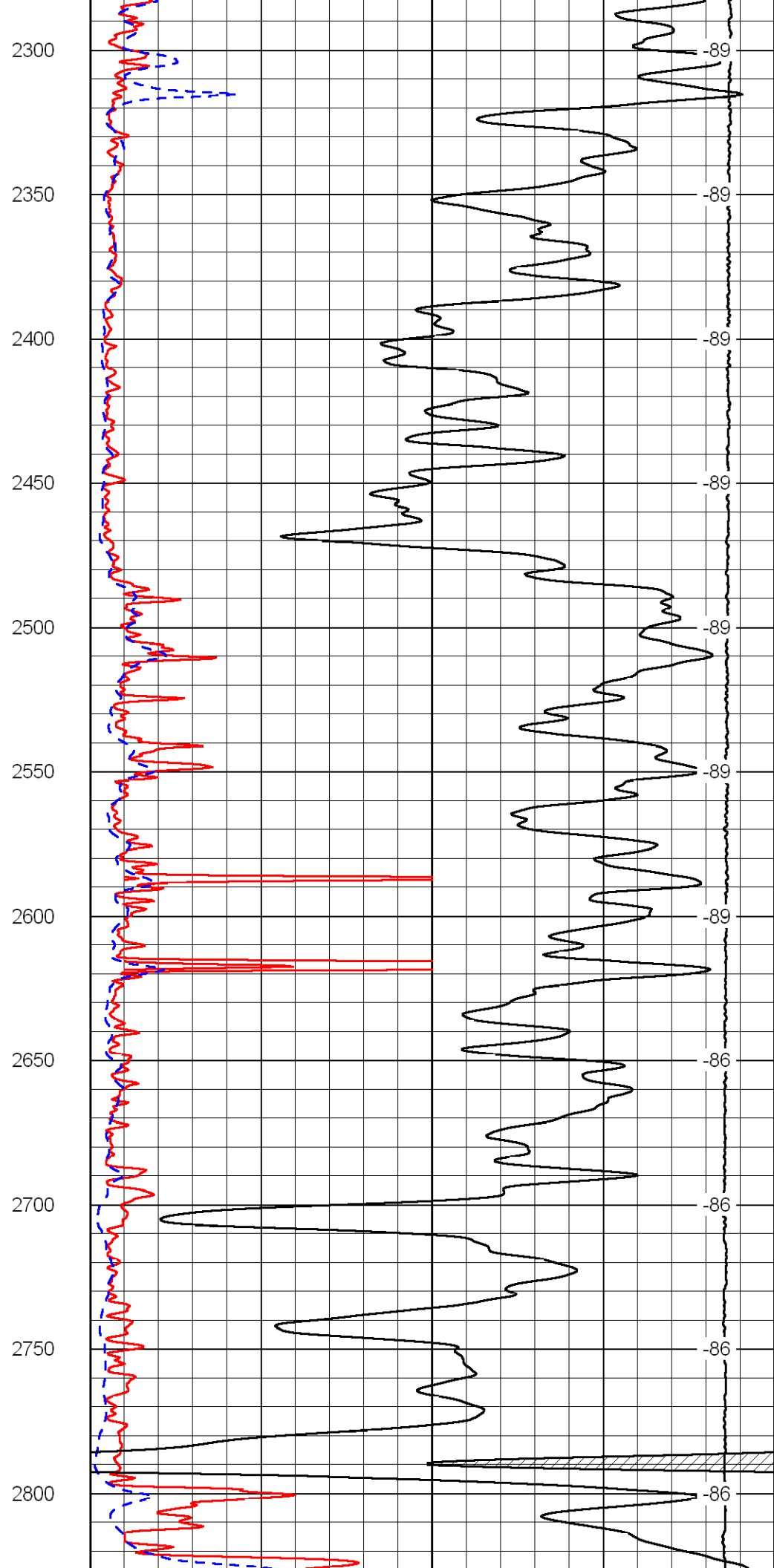
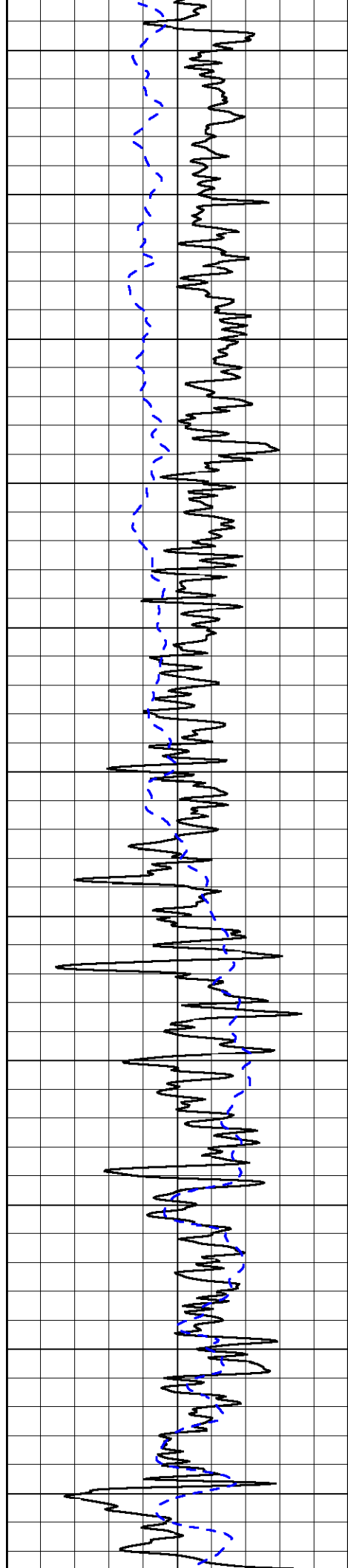


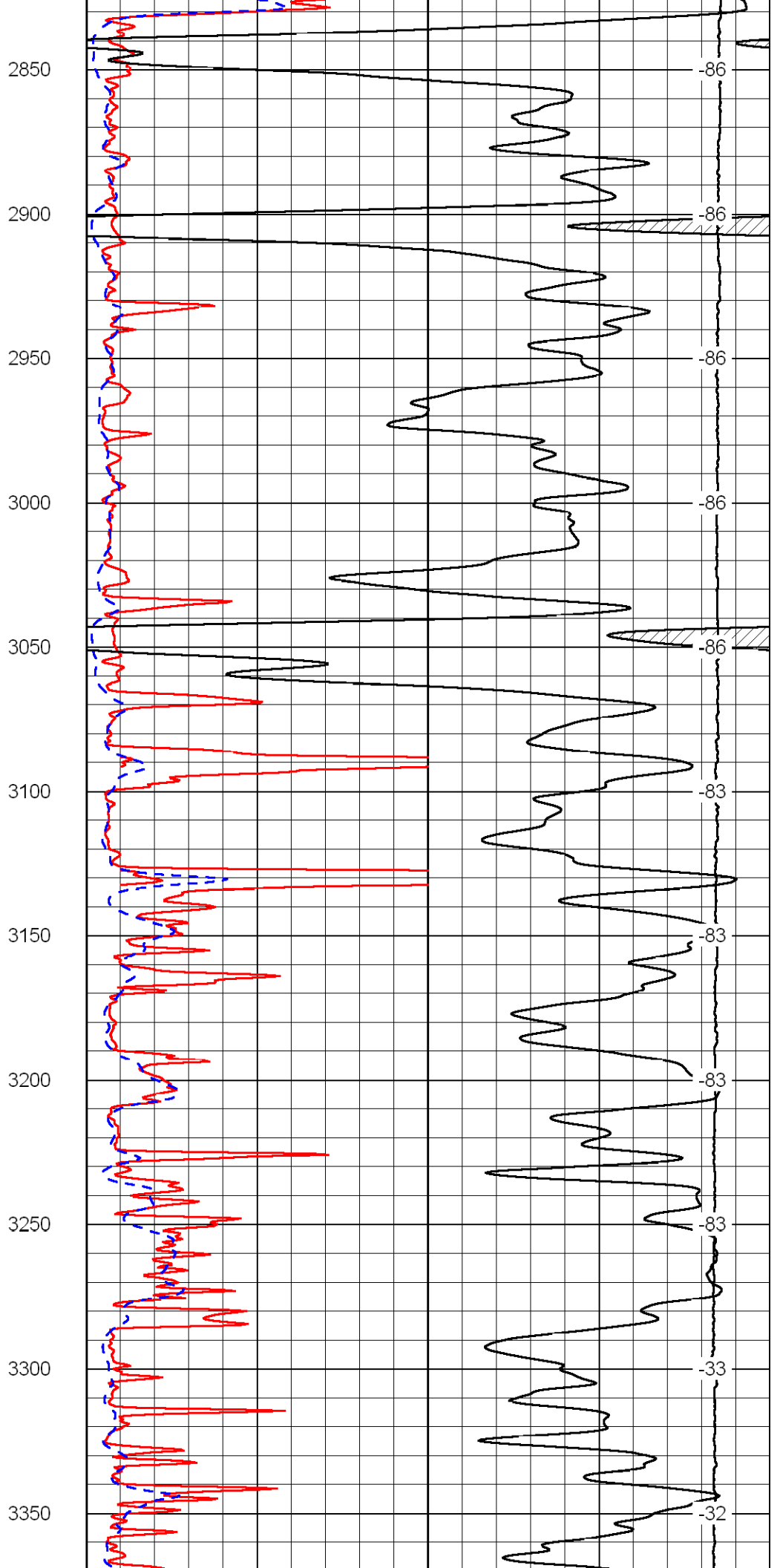
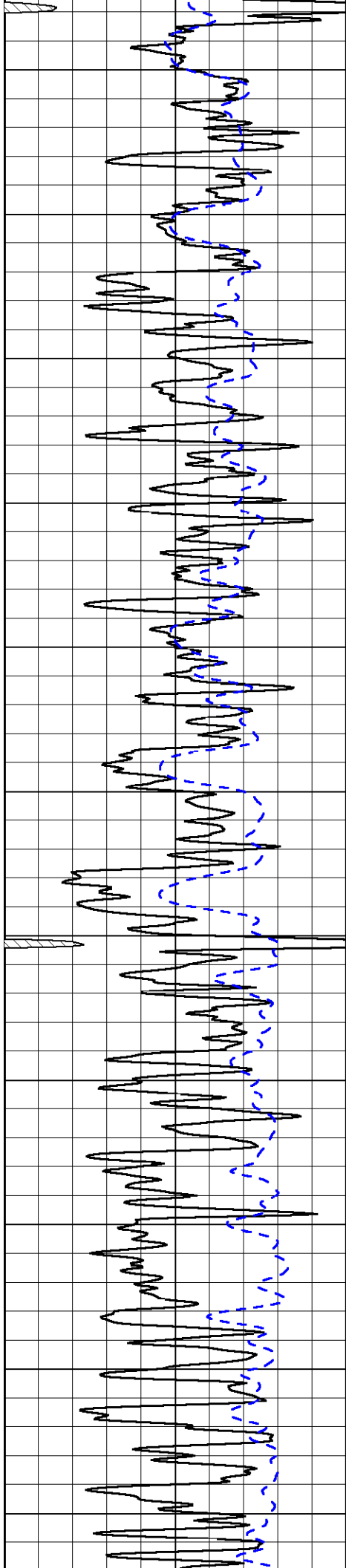
1200
1250
1300
1350
1400
1450
1500
1550
1600
1650
1700

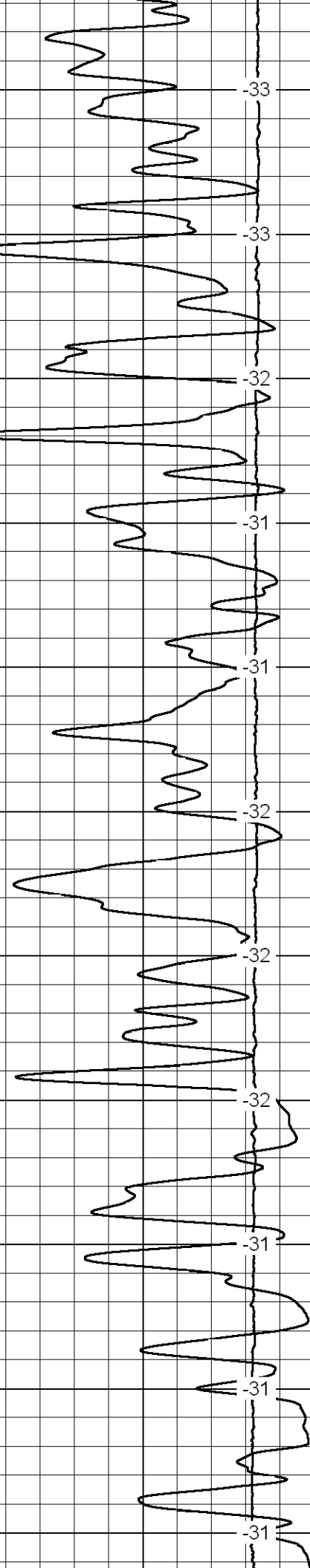
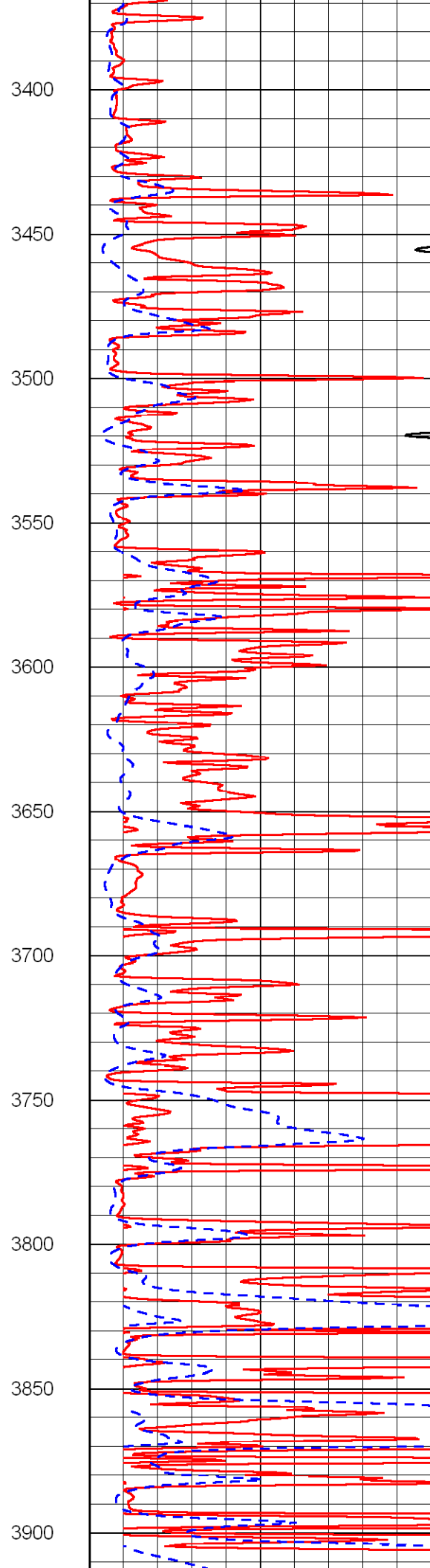
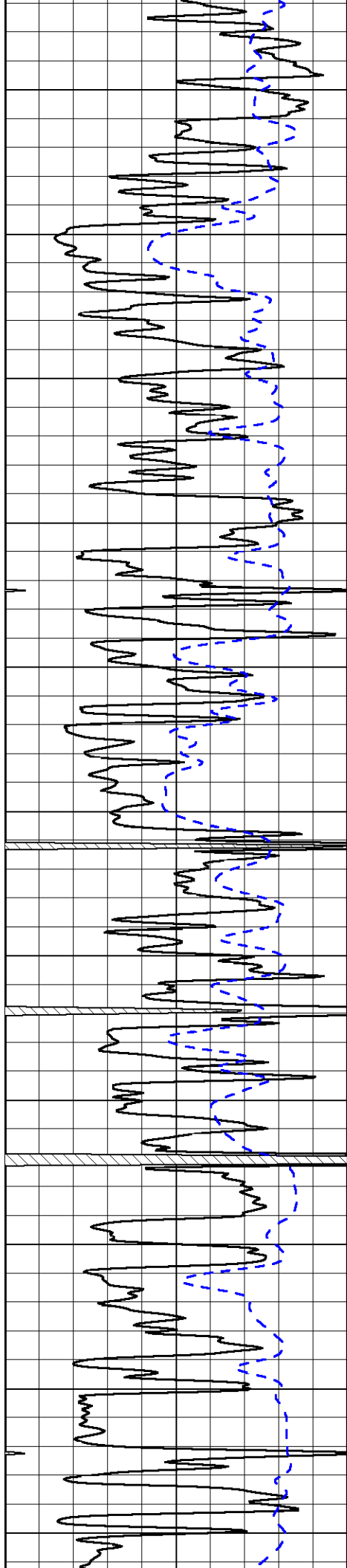


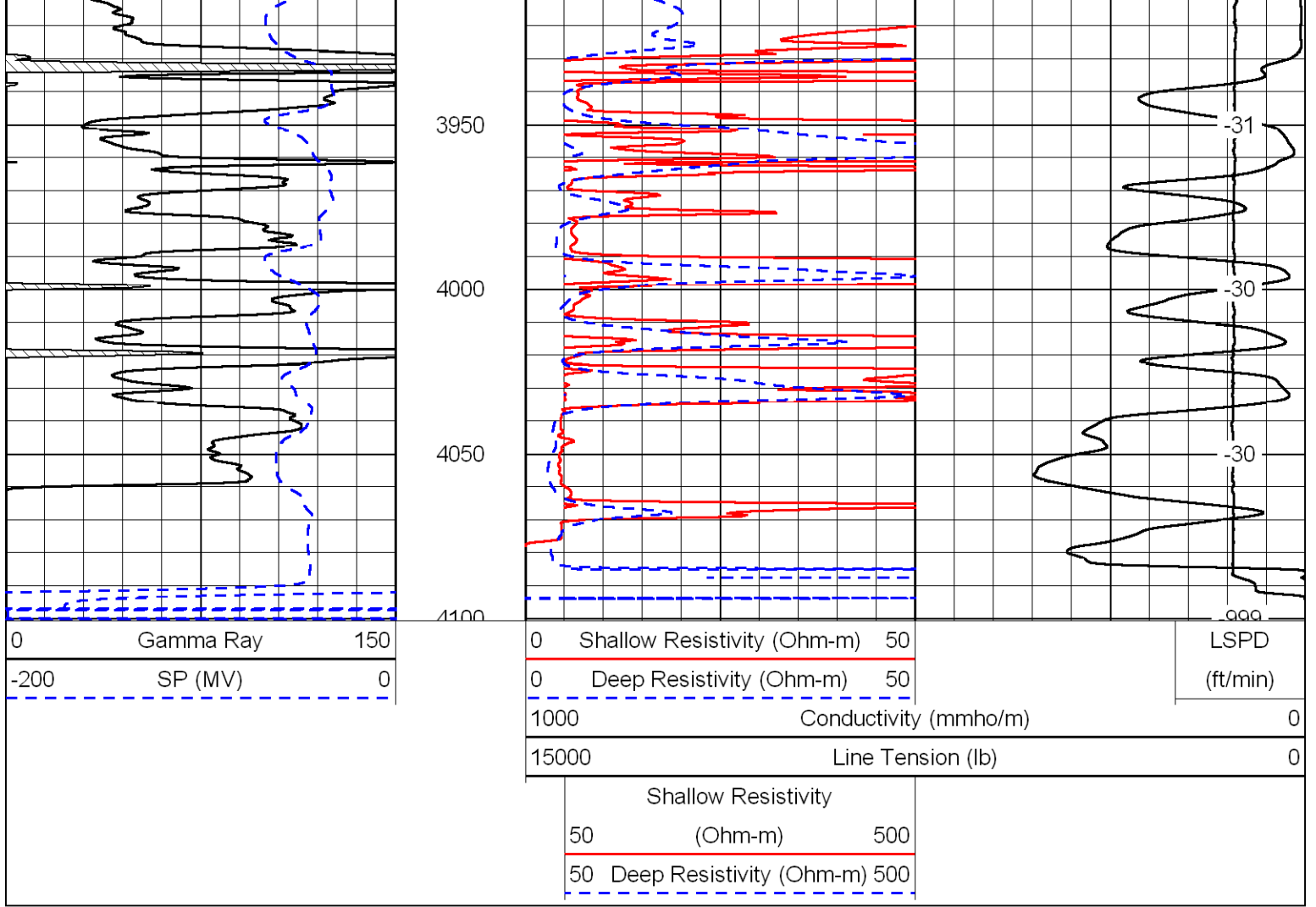
-75
-75
-75
-75
-75
-92
-92
-92
-92
-92
-88



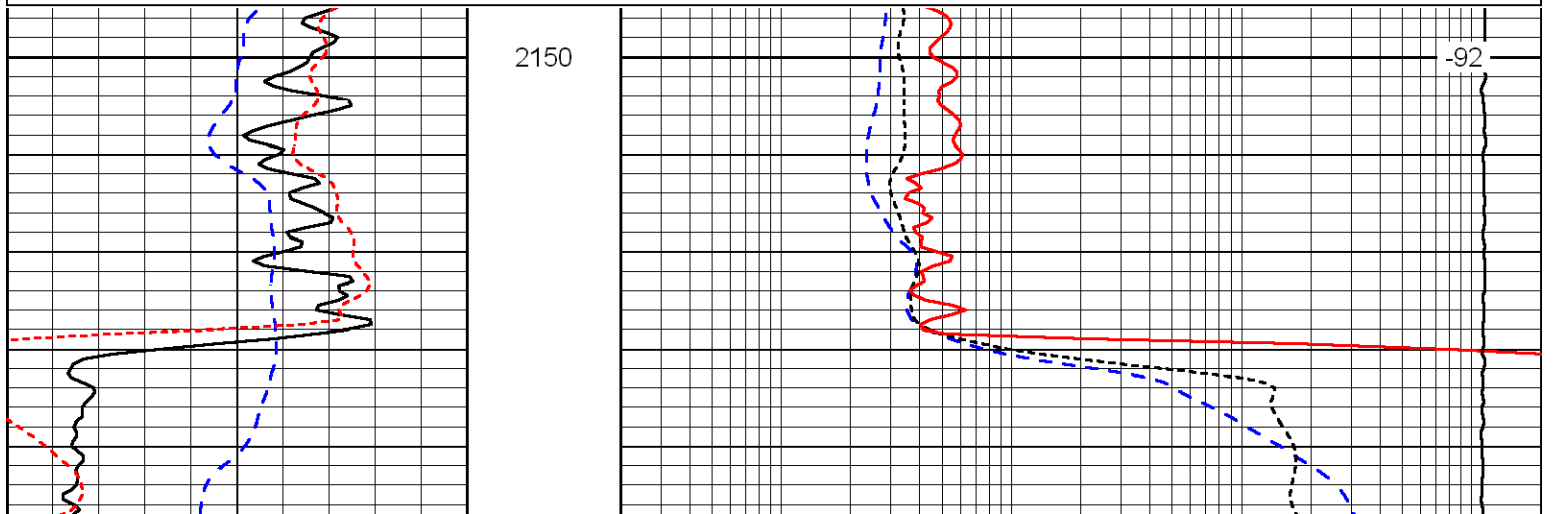
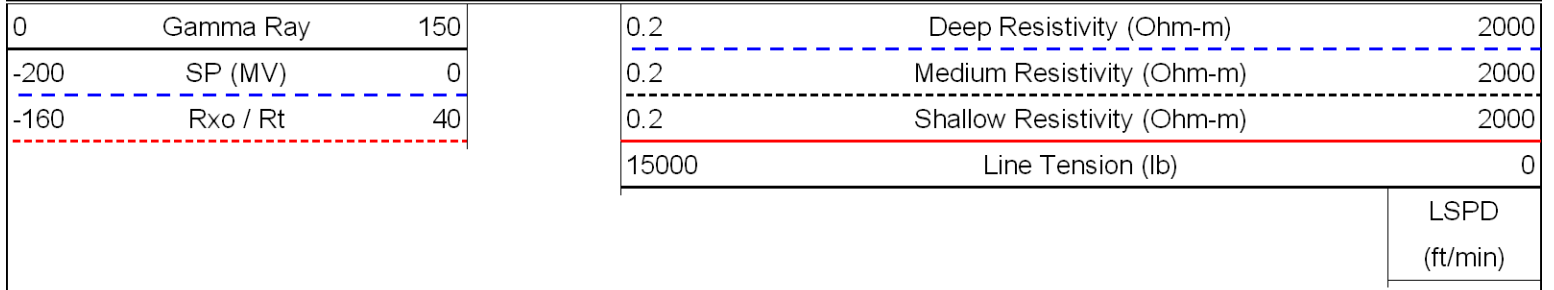


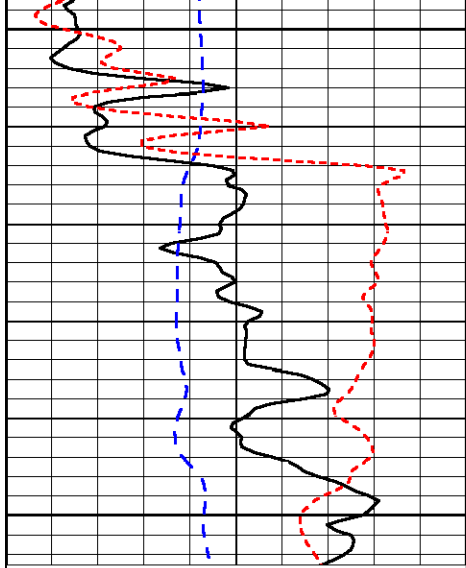






Database File: c:\warrior\data\h&m_oil creek no. 2\h and mhd.db
 Dataset Pathname: dil/stack
 Presentation Format: dil
 Dataset Creation: Wed Feb 03 02:01:59 2010
 Charted by: Depth in Feet scaled 1:240

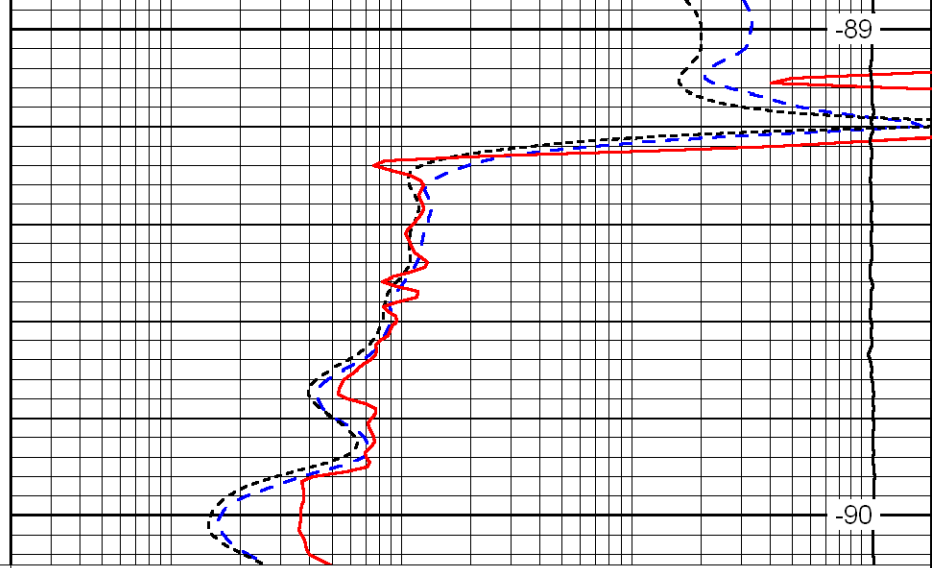




2200

2250

0	Gamma Ray	150
-200	SP (MV)	0
-160	Rxo / Rt	40



-89

-90

0.2	Deep Resistivity (Ohm-m)	2000
0.2	Medium Resistivity (Ohm-m)	2000
0.2	Shallow Resistivity (Ohm-m)	2000
15000	Line Tension (lb)	0

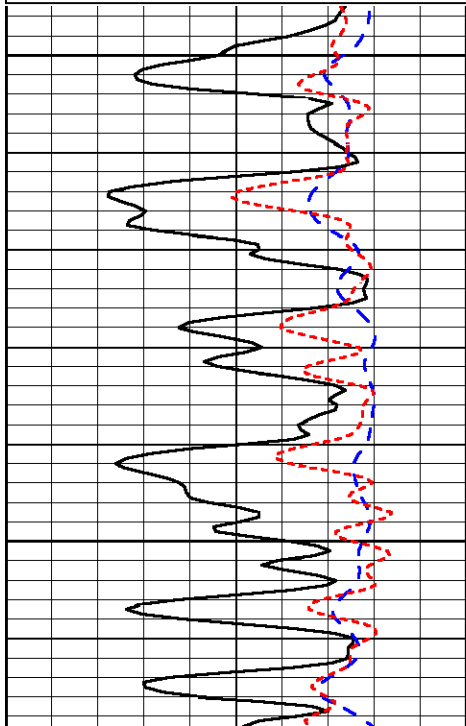
LSPD
(ft/min)

Database File: c:\warrior\data\h&m_oil creek no. 2\h and mhd.db
 Dataset Pathname: dil/stack
 Presentation Format: dil
 Dataset Creation: Wed Feb 03 02:01:59 2010
 Charted by: Depth in Feet scaled 1:240

0	Gamma Ray	150
-200	SP (MV)	0
-160	Rxo / Rt	40

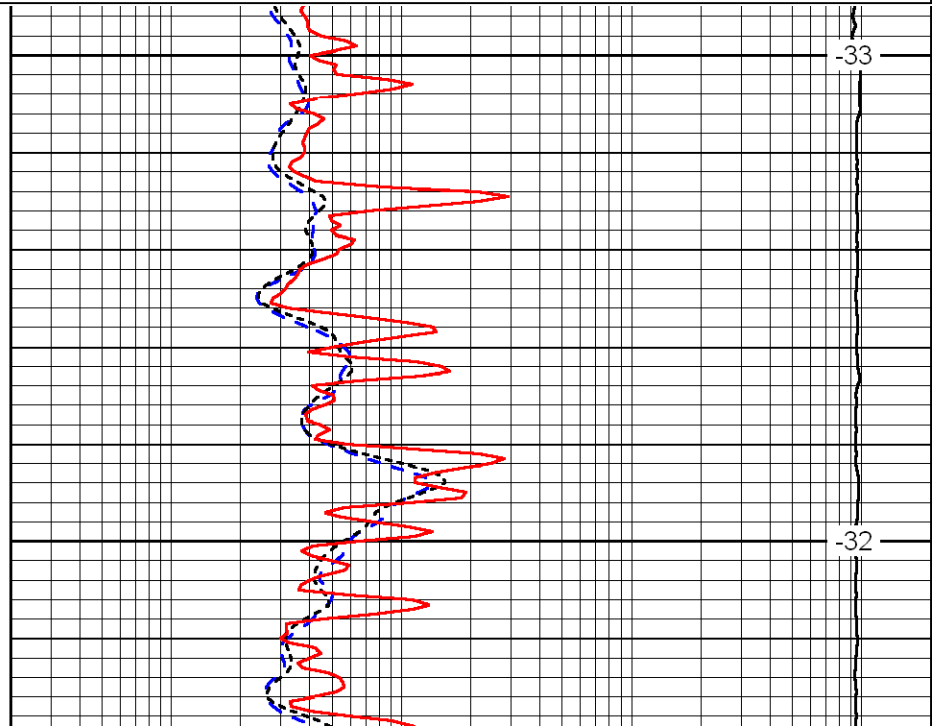
0.2	Deep Resistivity (Ohm-m)	2000
0.2	Medium Resistivity (Ohm-m)	2000
0.2	Shallow Resistivity (Ohm-m)	2000
15000	Line Tension (lb)	0

LSPD
(ft/min)



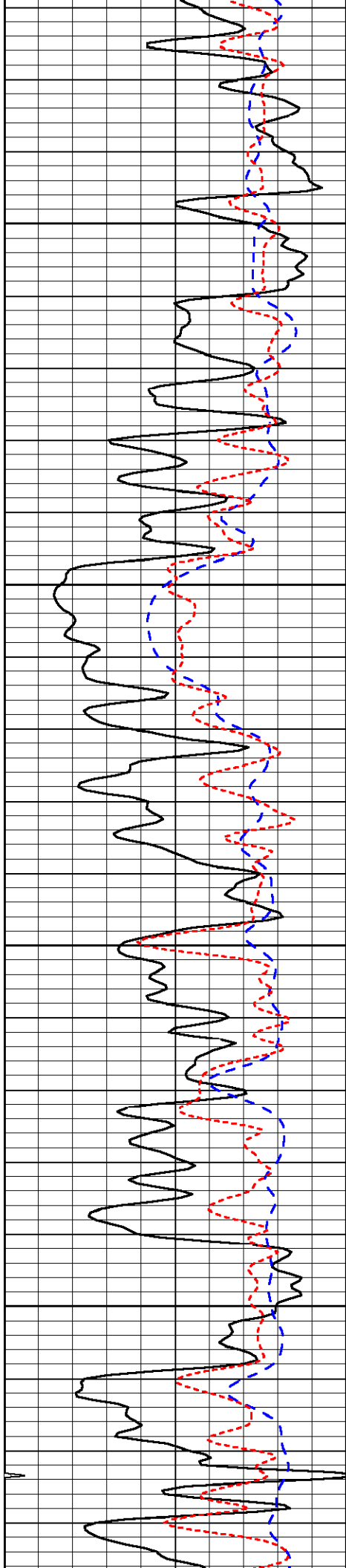
3300

3350



-33

-32

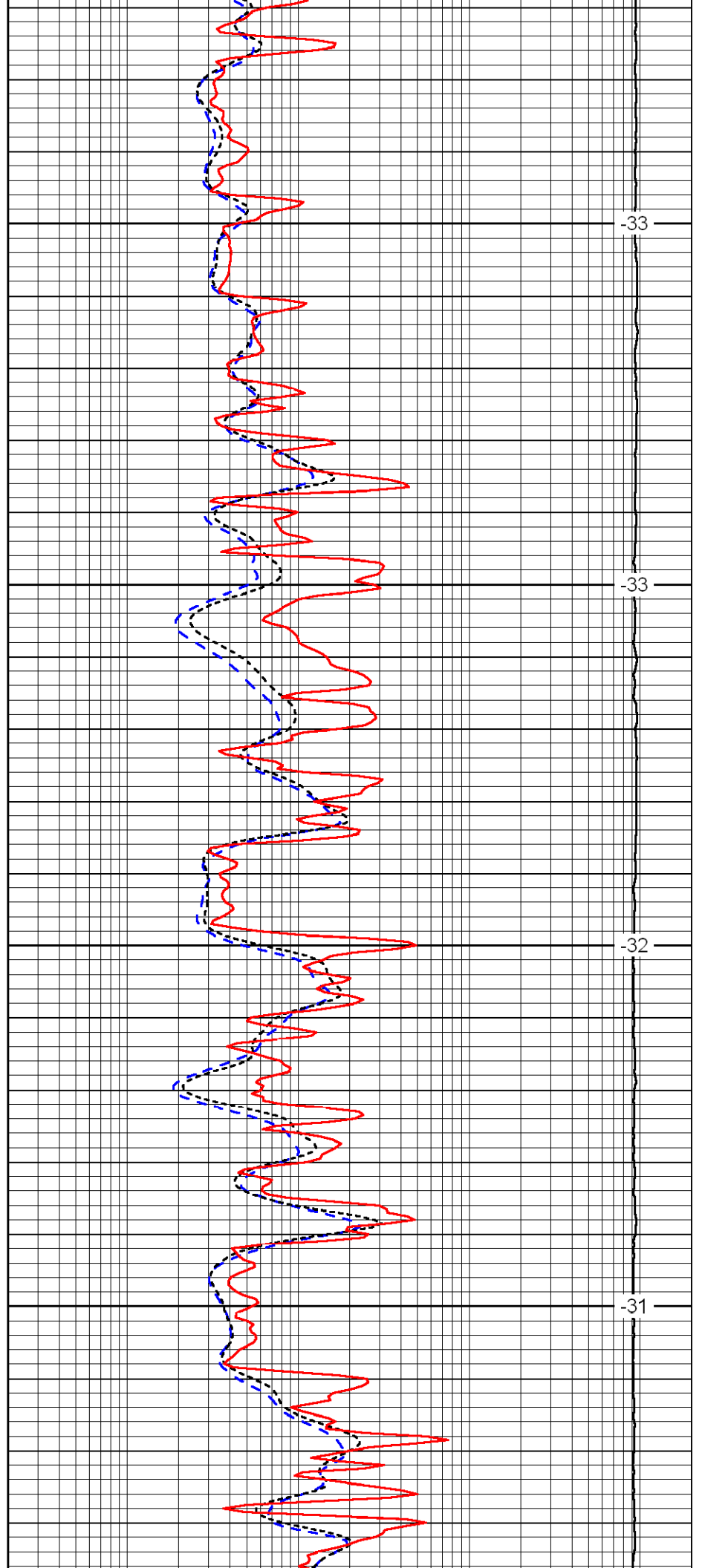


3400

3450

3500

3550

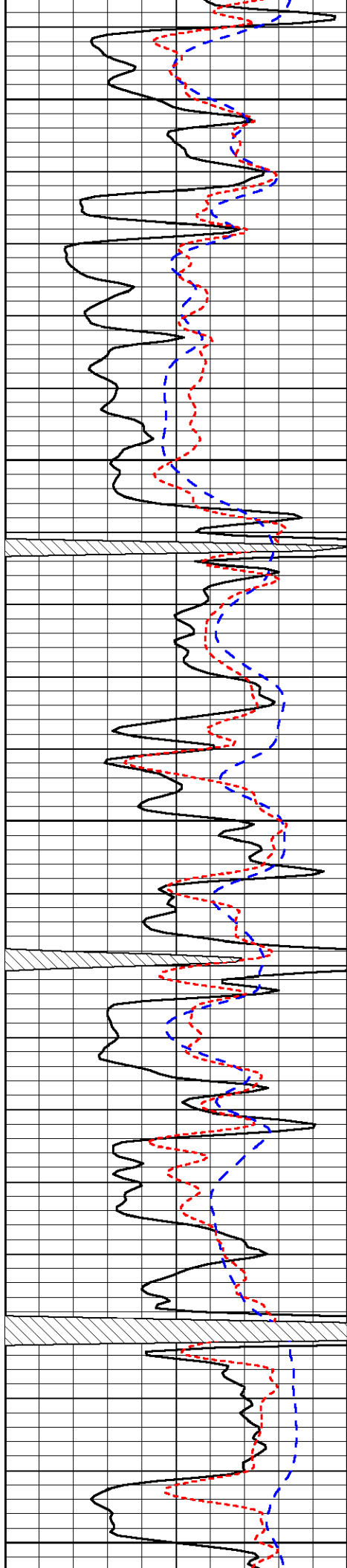


-33

-33

-32

-31



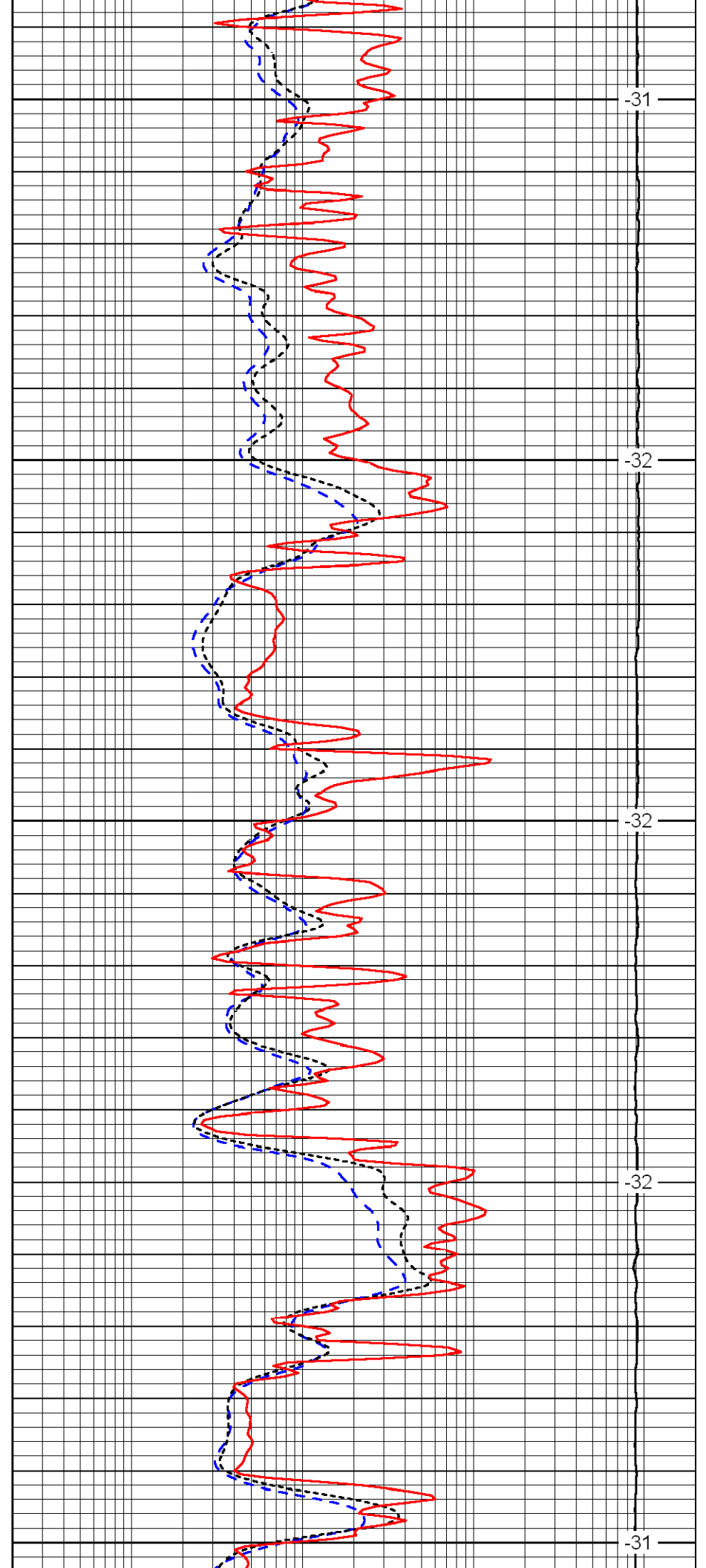
3600

3650

3700

3750

3800



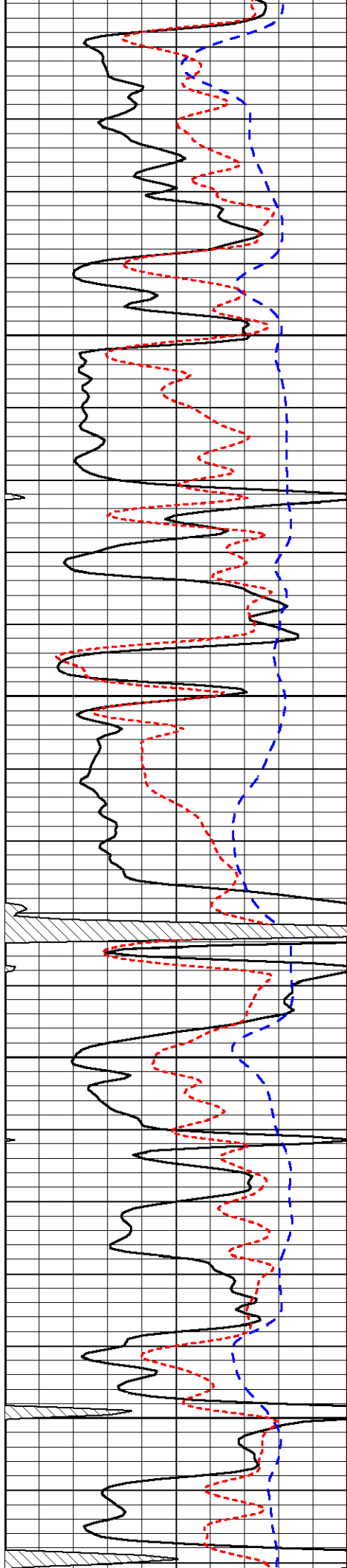
-31

-32

-32

-32

-31

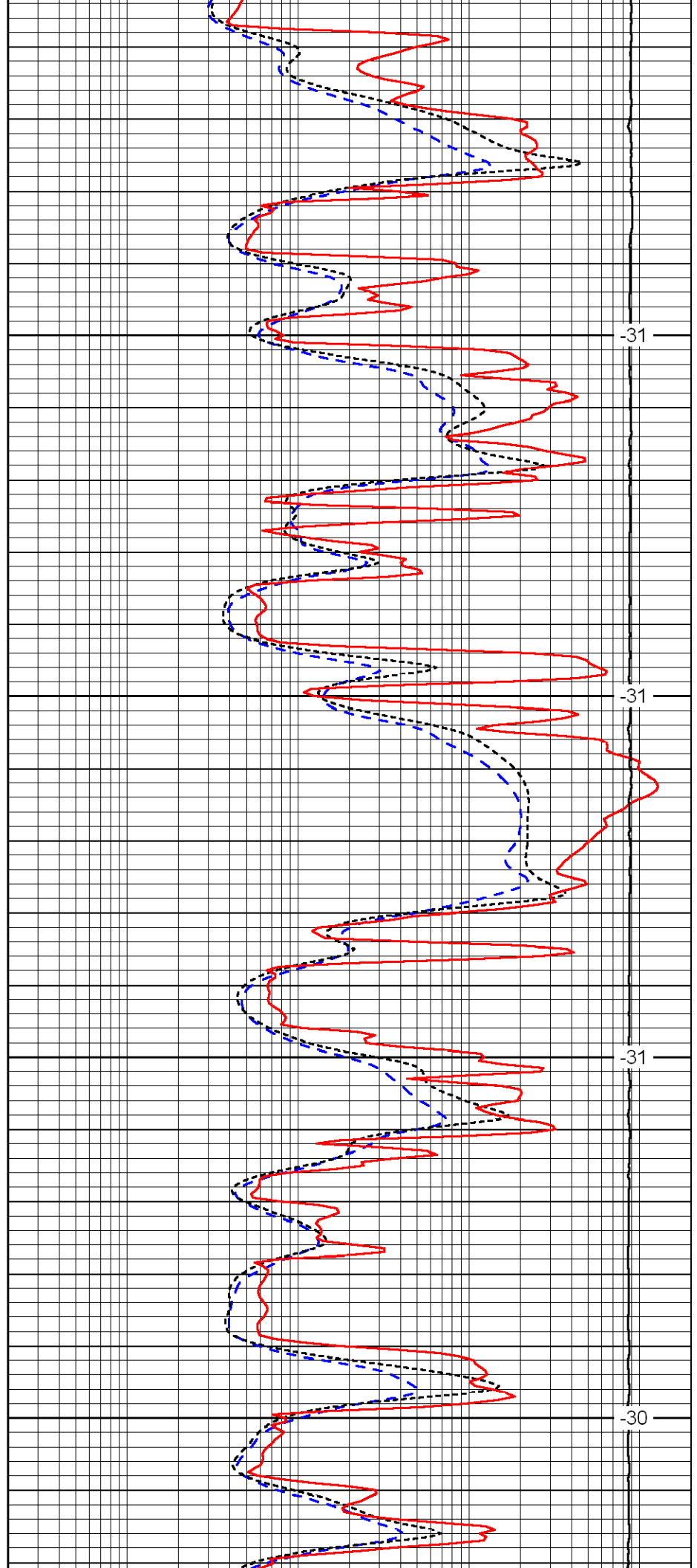


3850

3900

3950

4000

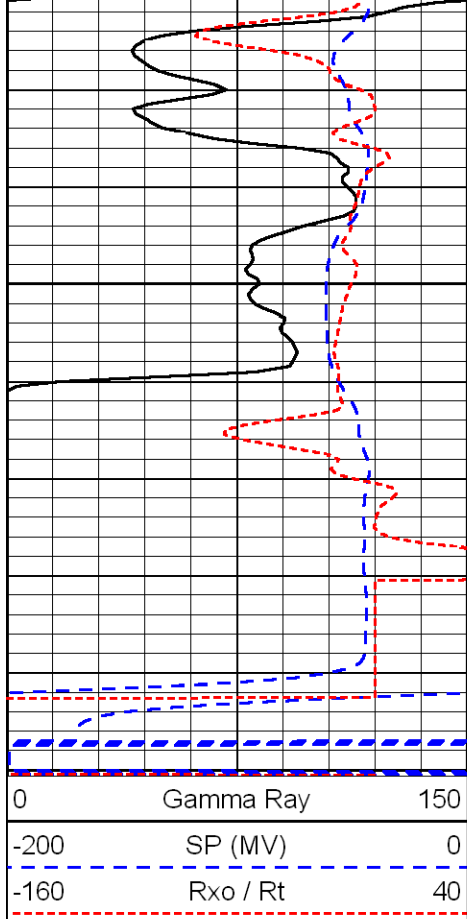


-31

-31

-31

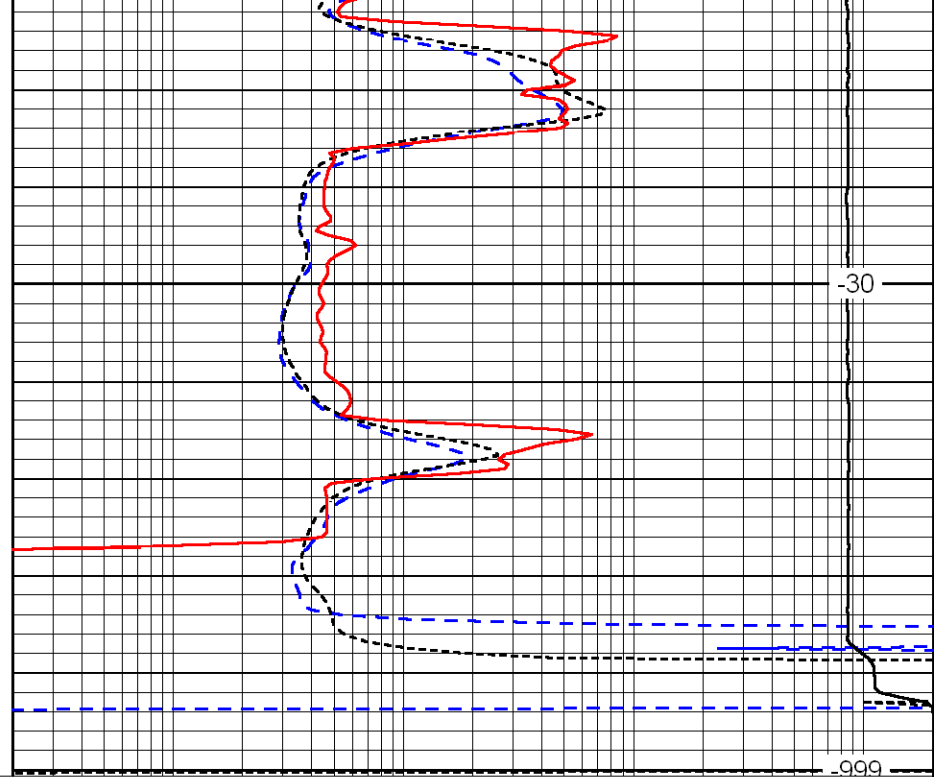
-30



4050

4100

0	Gamma Ray	150
-200	SP (MV)	0
-160	Rxo / Rt	40



-30

-999

0.2	Deep Resistivity (Ohm-m)	2000
0.2	Medium Resistivity (Ohm-m)	2000
0.2	Shallow Resistivity (Ohm-m)	2000
15000	Line Tension (lb)	0

LSPD
(ft/min)