



**Borehole Compensated  
Sonic Log**

**DIGITAL LOG (785) 625-3858**

API No. 15-065-23,606-00-00	Company <b>H &amp; C Oil Operating, Inc.</b>	Location <b>1650' FSL &amp; 1500' FWL</b>	Other Services CNL/CDL MEL/DIL
Well <b>Myrill No. 6 - 1</b>	County <b>Graham</b>		
Field <b>Wildcat</b>	State <b>Kansas</b>		
Sec: <b>6</b>	Twp: <b>6S</b>	Rge: <b>23W</b>	Elevation K.B. 2436 D.F. 2431 G.L. 2431
Permanent Datum Log Measured From Drilling Measured From	Ground Level Kelly Bushing Kelly Bushing	Elevation 2431 5 Ft. Above Perm. Datum	

Date	01/07/2010
Run Number	Two
Type Log	BHC Sonic
Depth Driller	3875
Depth Logger	3875
Bottom Logged Interval	3864
Top Logged Interval	250
Type Fluid In Hole	Chemical
Salinity, PPM CL	4,400
Density	9.2
Level	Full
Max. Rec. Temp. F	117
Operating Rig Time	5 Hours
Equipment -- Location	10 Hays
Recorded By	Jason Wellbrock
Witnessed By	Al Downing

Borehole Record				Casing Record			
Run No	Bit	From	To	Size	Wgt.	From	To
1	12.25	00	293	8.625	24#	00	293
2	7.875	293	3875				

<<< Fold Here >>>

All interpretations are opinions based on inferences from electrical or other measurements and we cannot and do not guarantee the accuracy or correctness of any interpretation, and we shall not, except in the case of gross or willful negligence on our part, be liable or responsible for any loss, costs, damages, or expenses incurred or sustained by anyone resulting from any interpretation made by any of our officers, agents or employees. These interpretations are also subject to our general terms and conditions set out in our current Price Schedule.

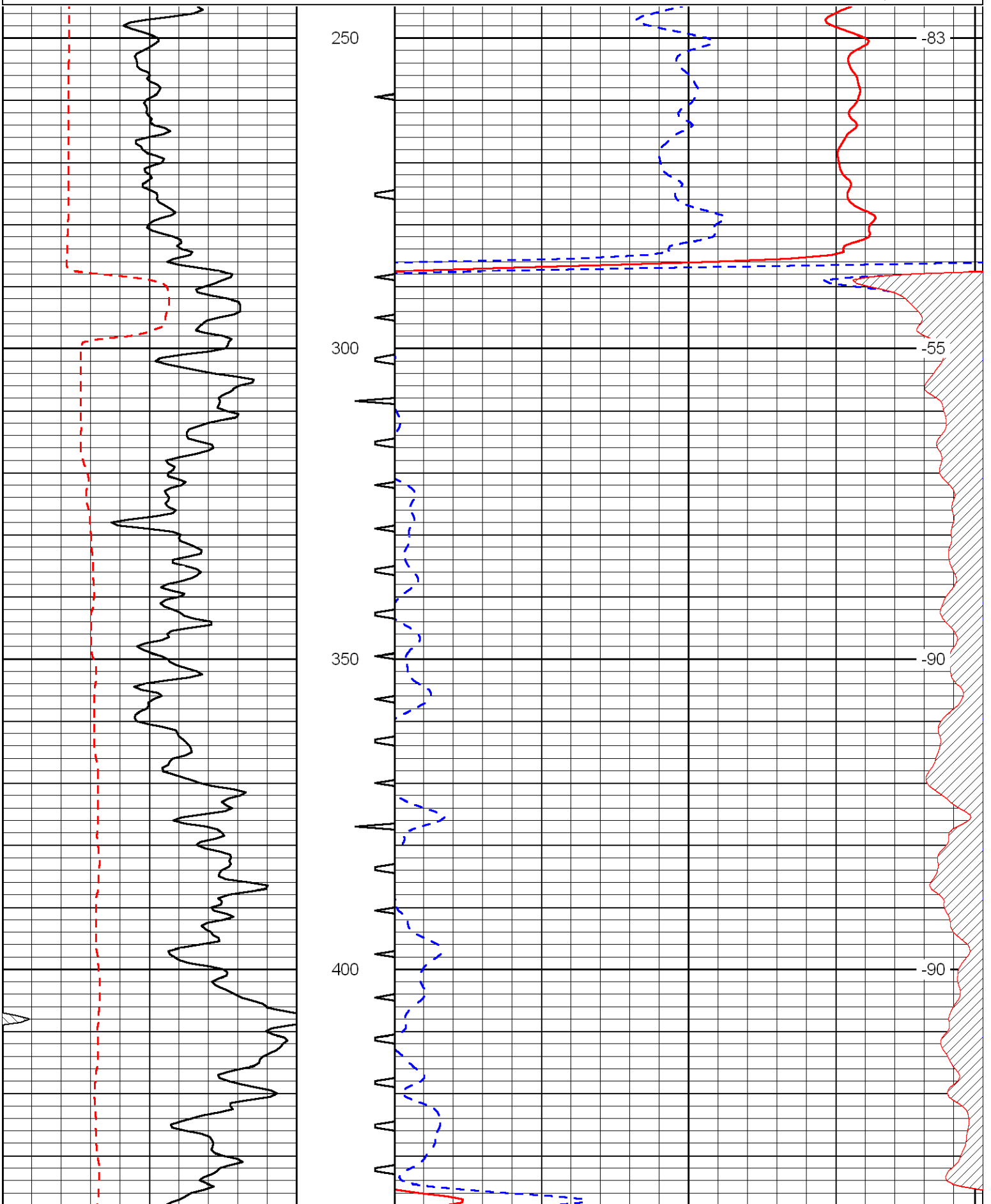
**Comments**

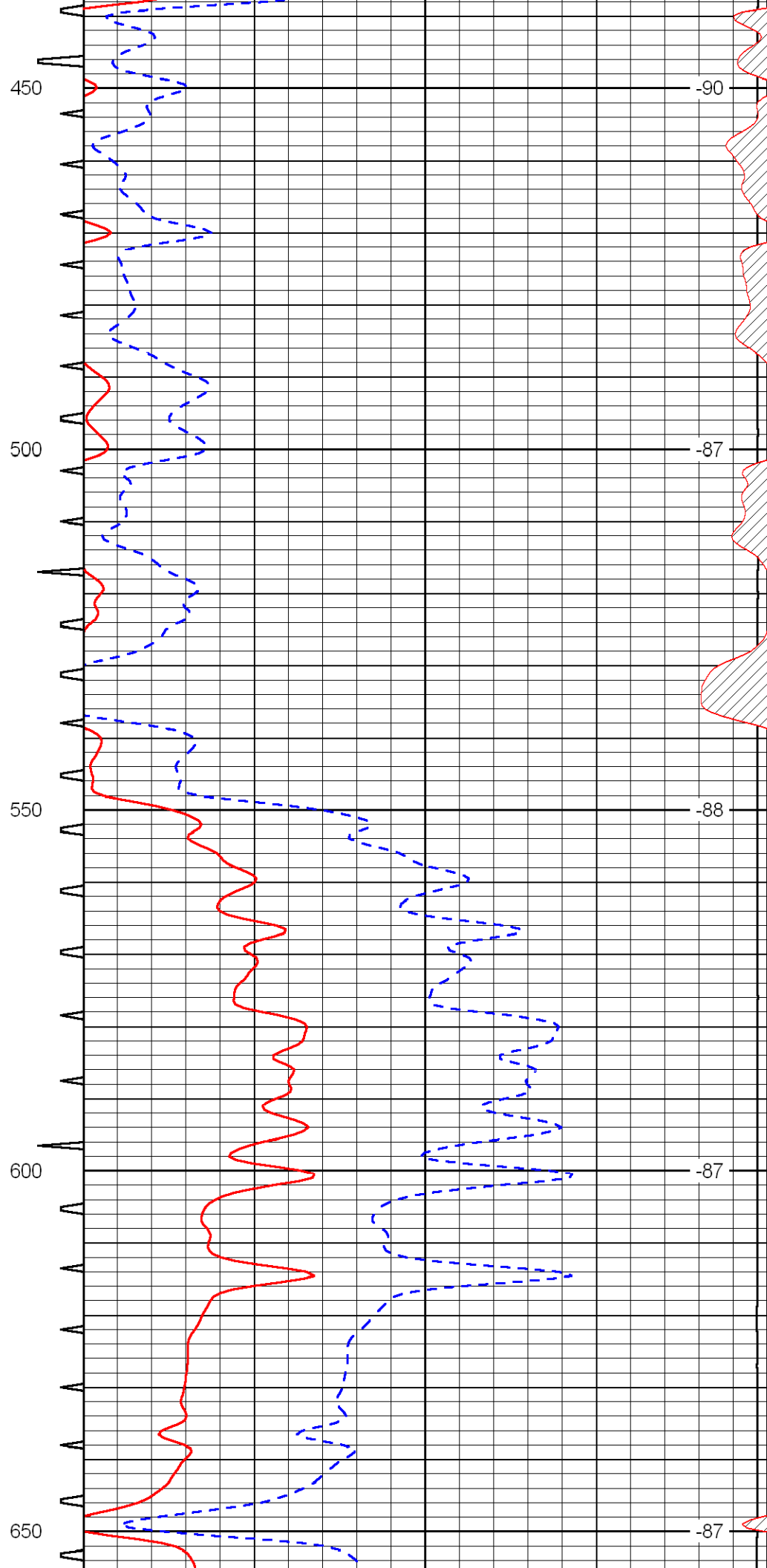
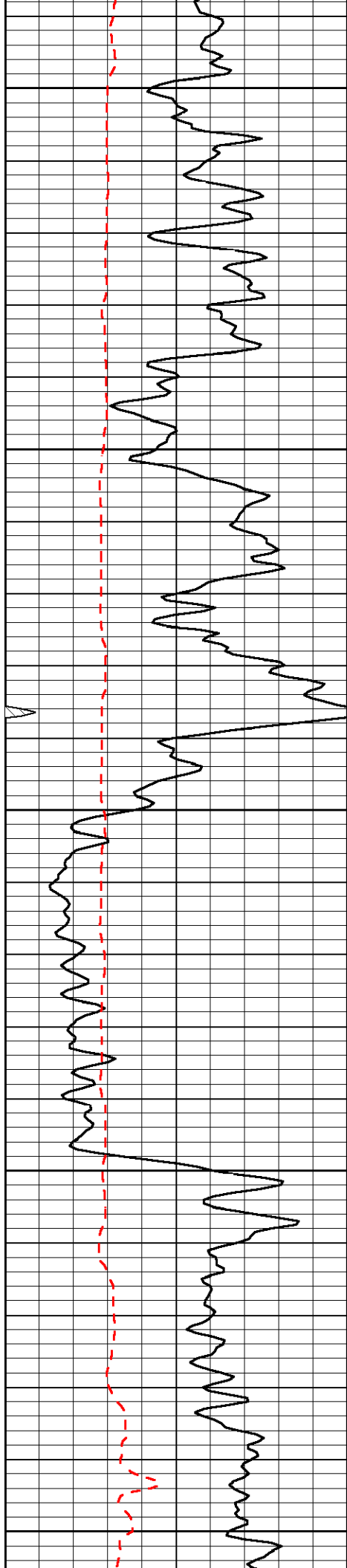
Thank you for using Log-Tech, Inc.  
(785) 625-3858

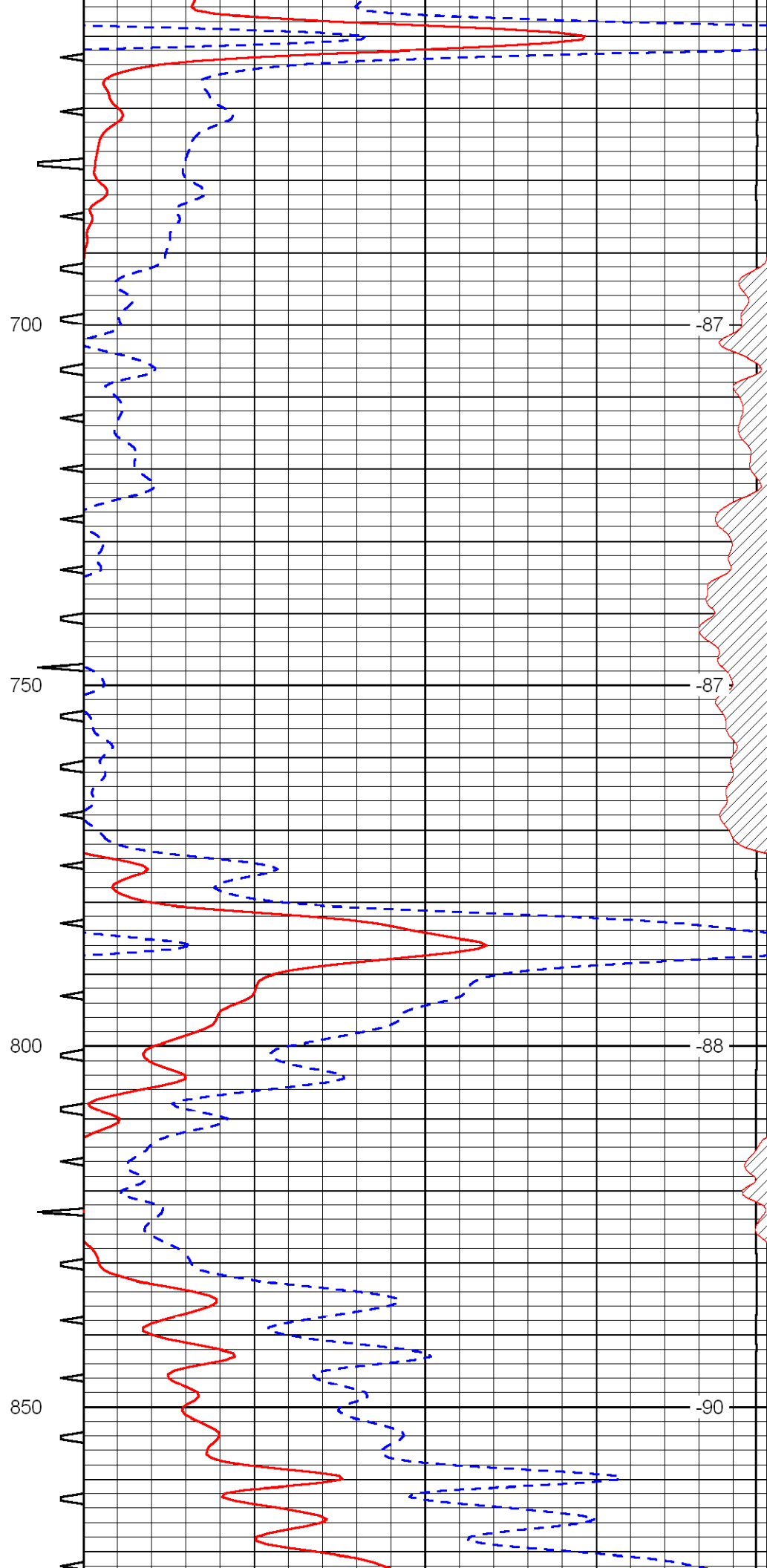
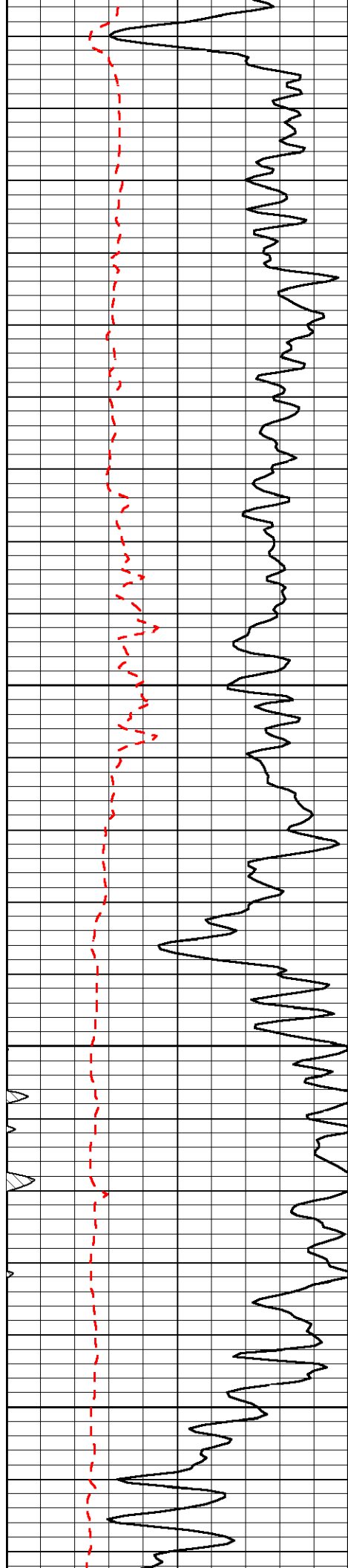
Hill City 12 S, 5 W, 1 N, E Into

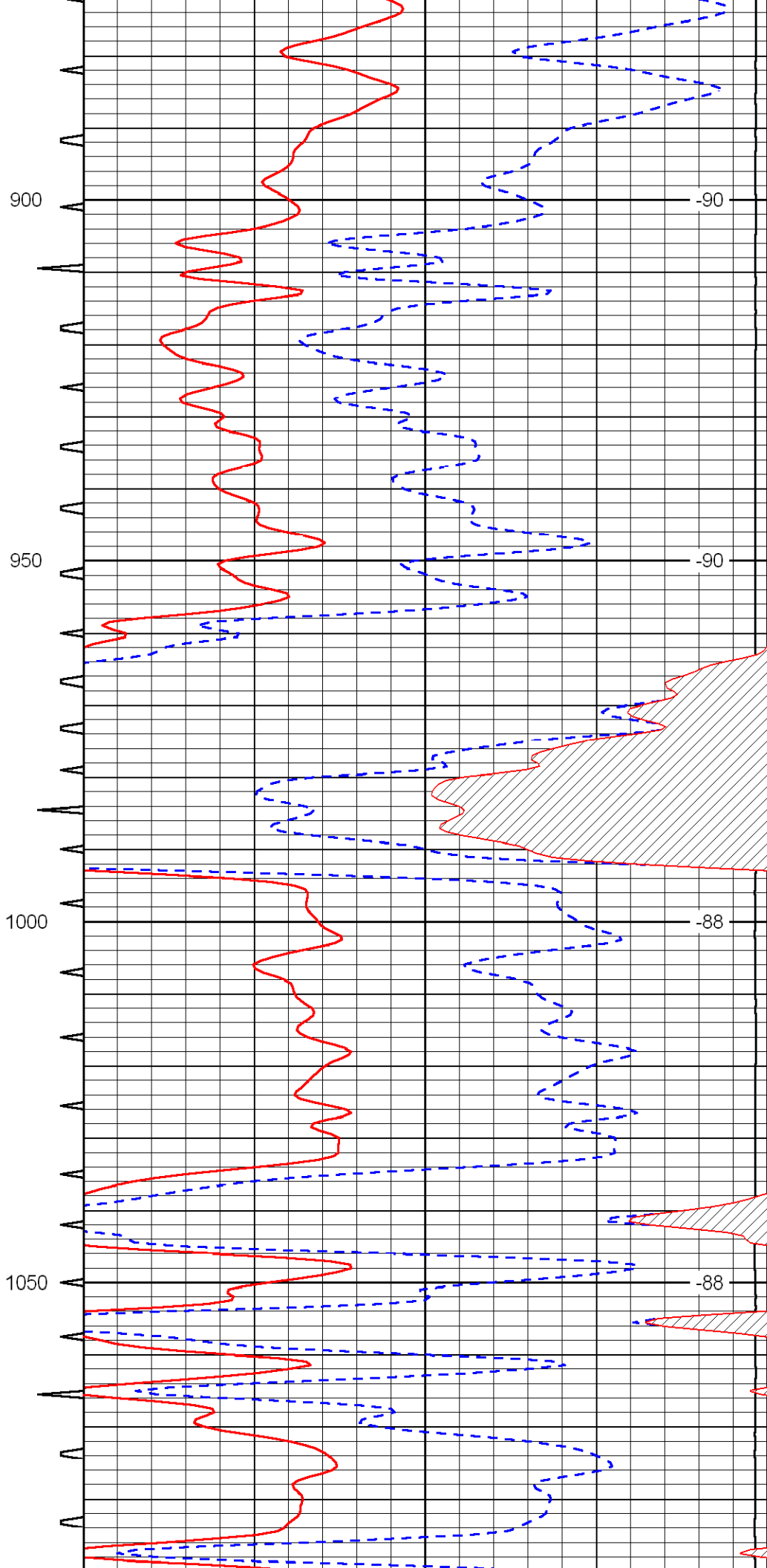
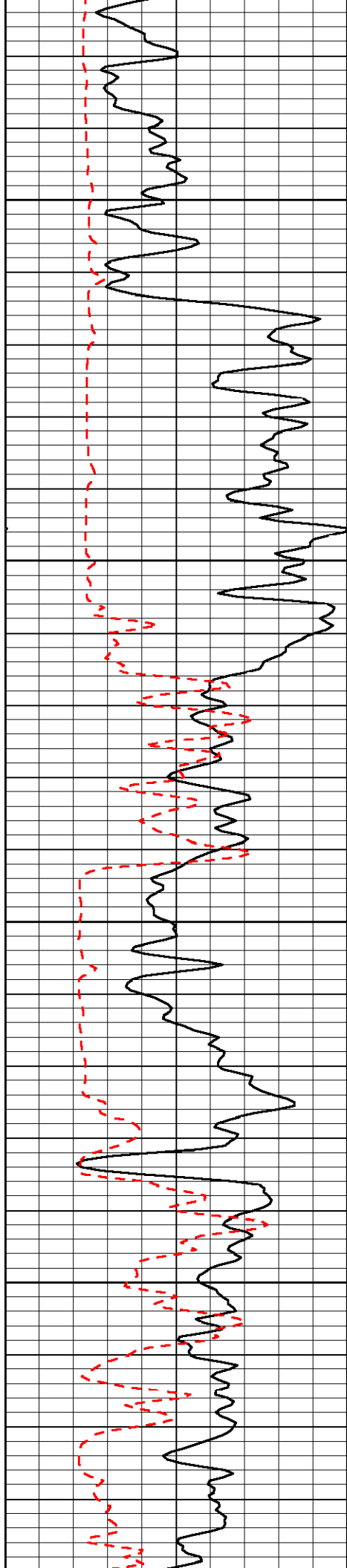
Database File: c:\warrior\data\h&c\_wyrill no. 6 - 1\hchd.db  
 Dataset Pathname: dil/hc2in  
 Presentation Format: sonic  
 Dataset Creation: Thu Jan 07 11:58:27 2010  
 Charted by: Depth in Feet scaled 1:240

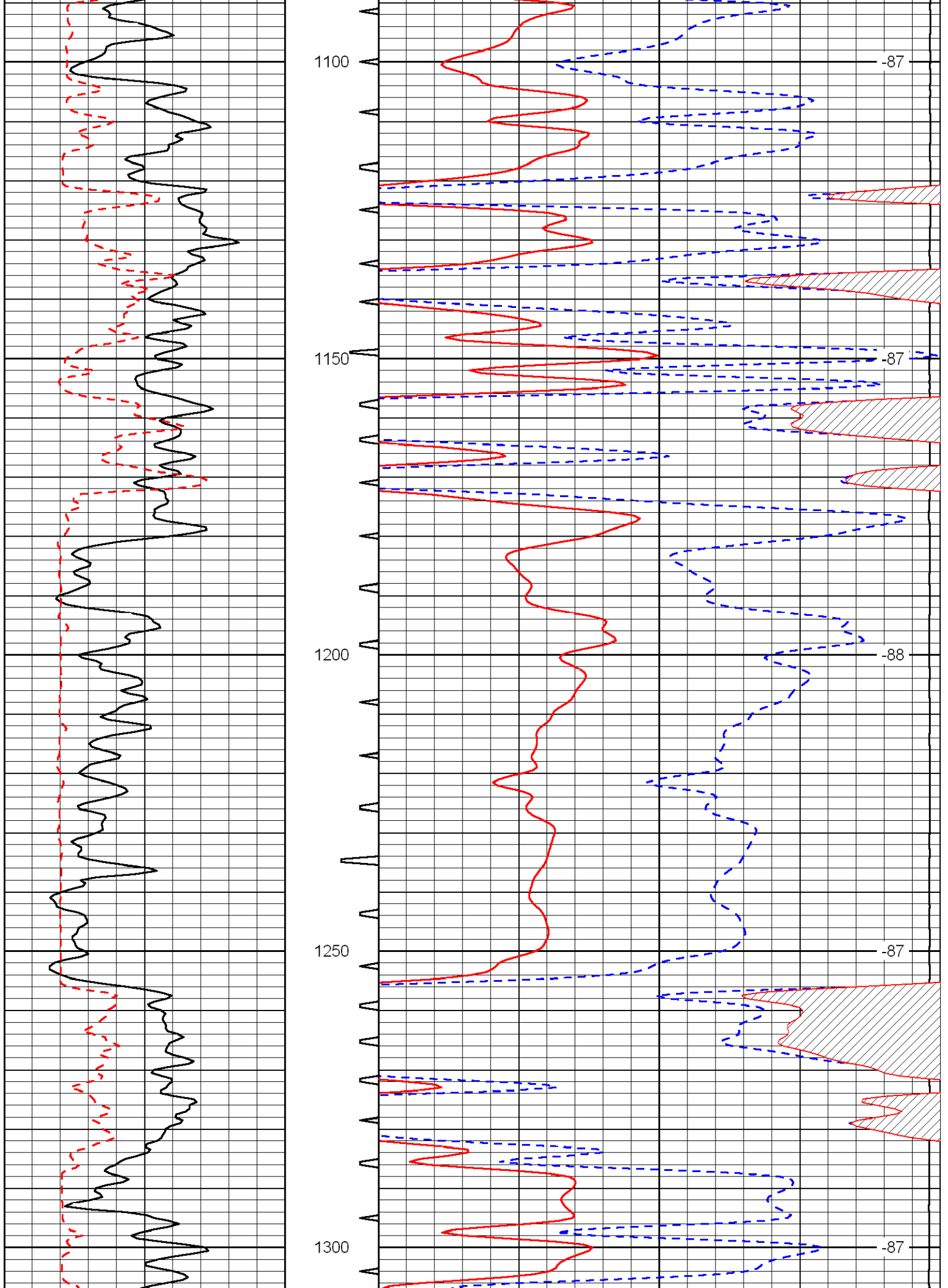
0	Gamma Ray	150	Sonic Int	140	Delta Time (usec/ft) (usec/ft)	40
150	Gamma Ray	300	5 (msec)	0	SPOR (pu)	-10
6	Caliper (in)	16		15000	LTEN (lb) (lb)	0
						LSPD (ft/min)

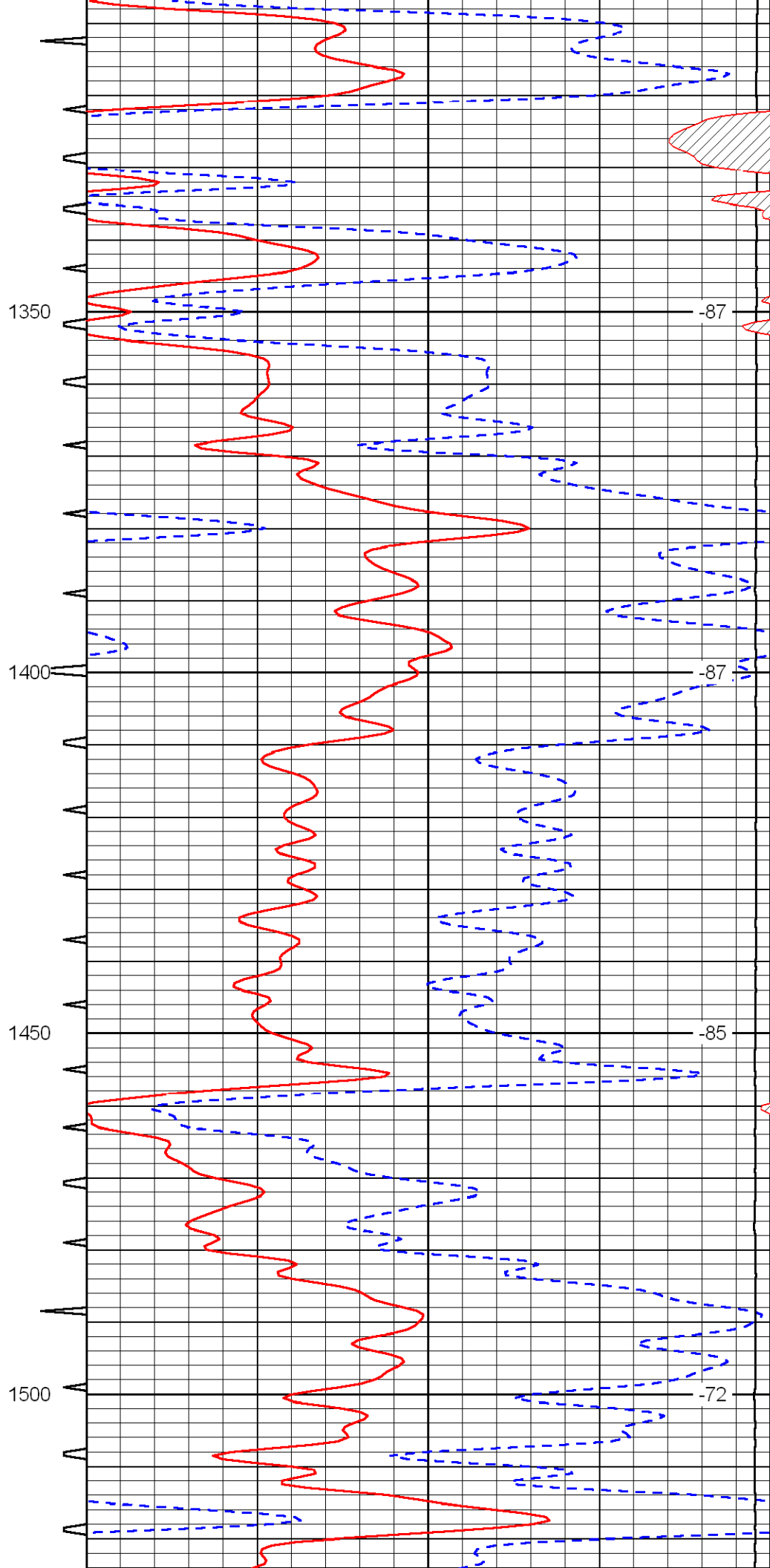
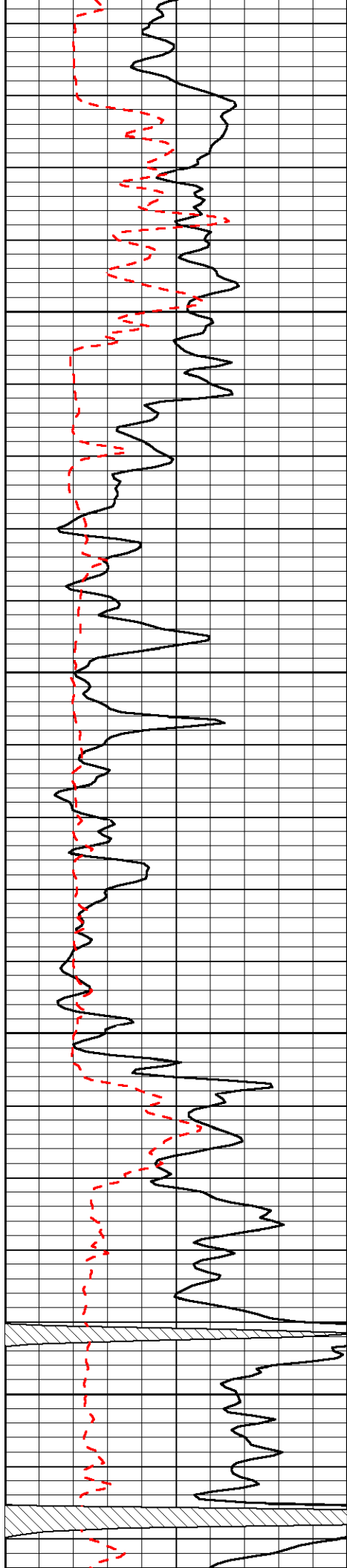


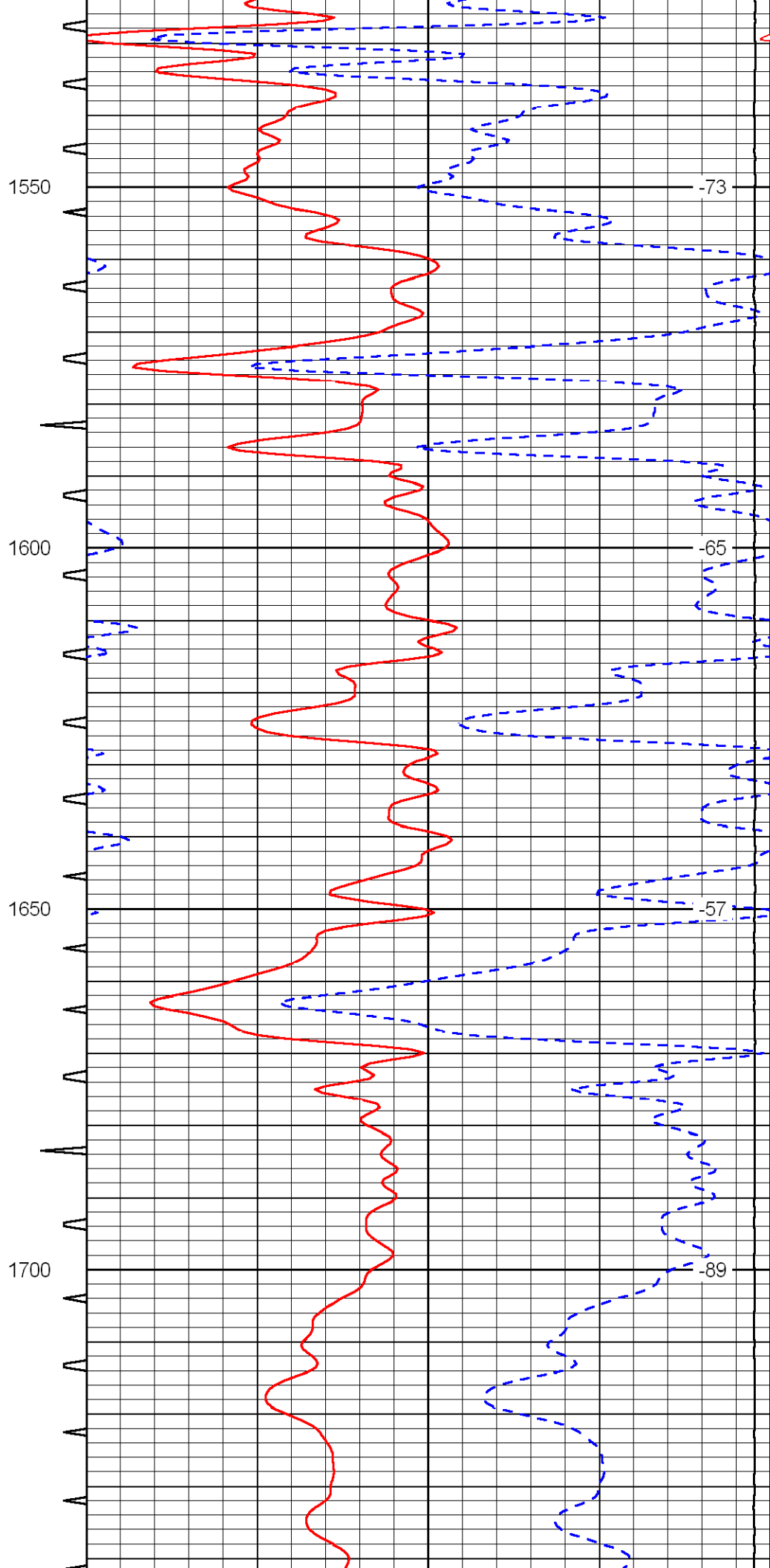
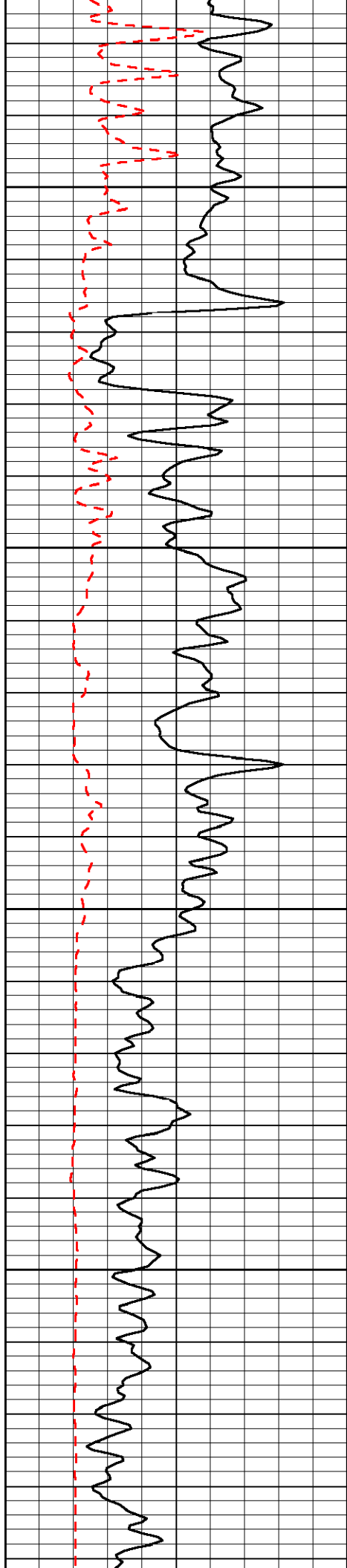


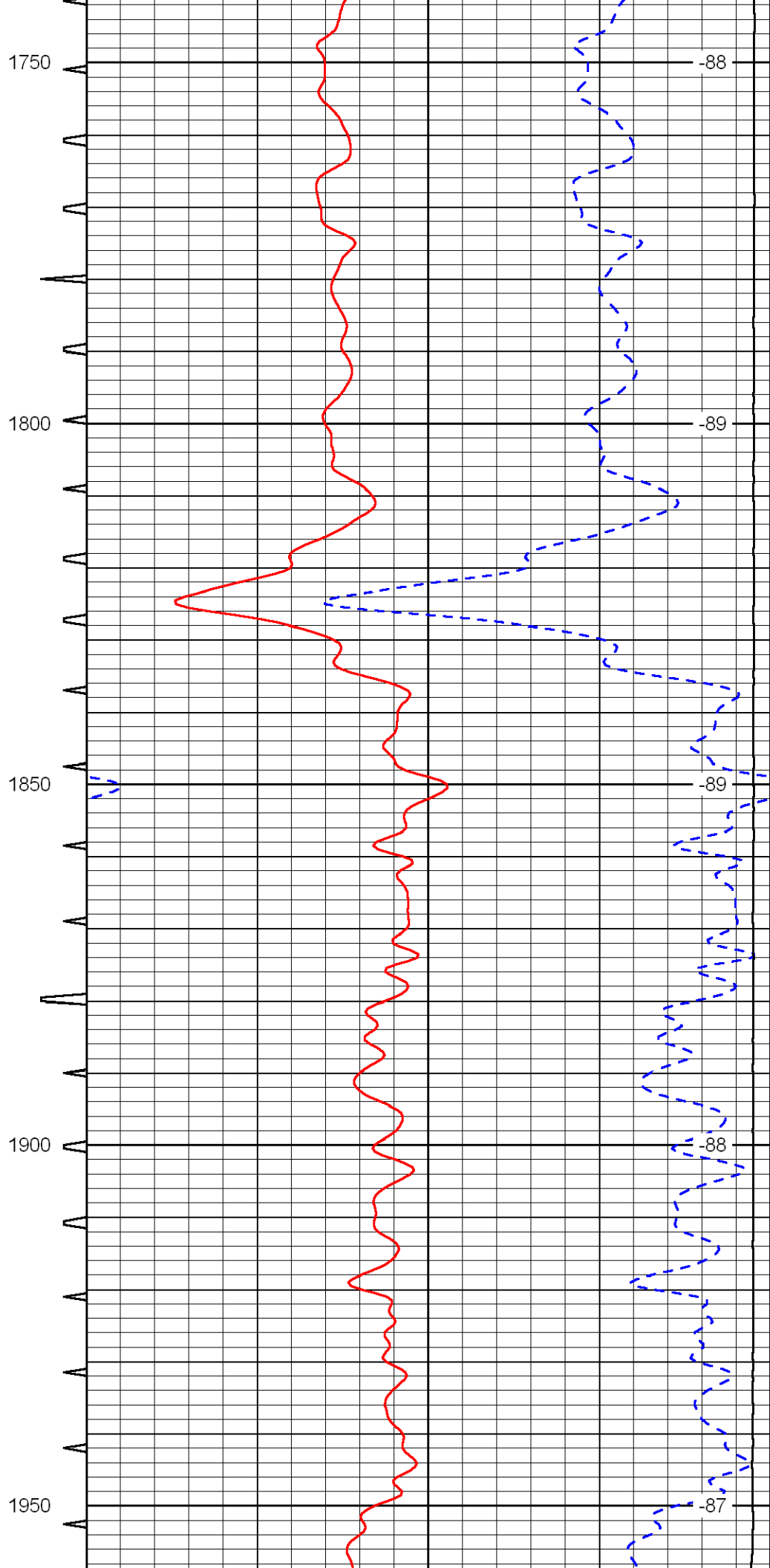
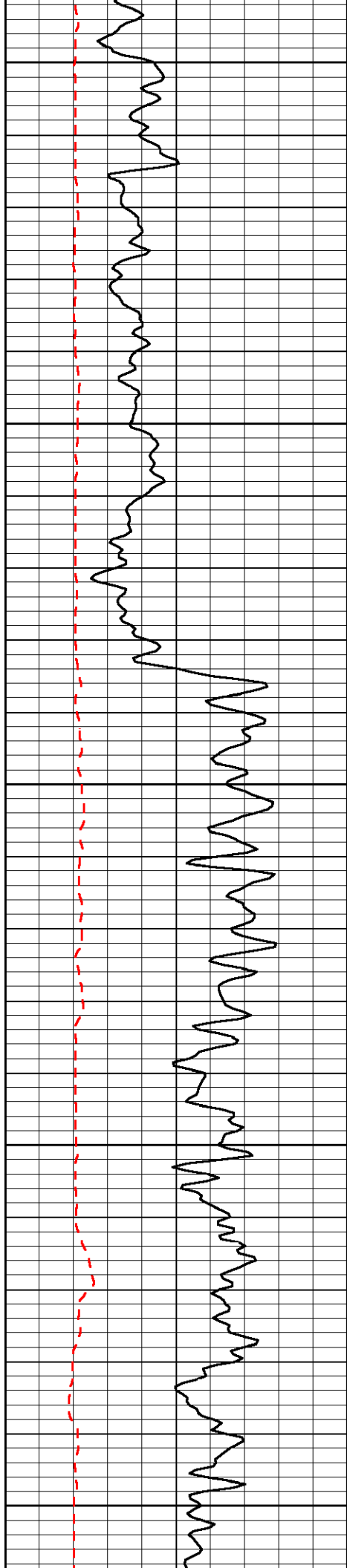


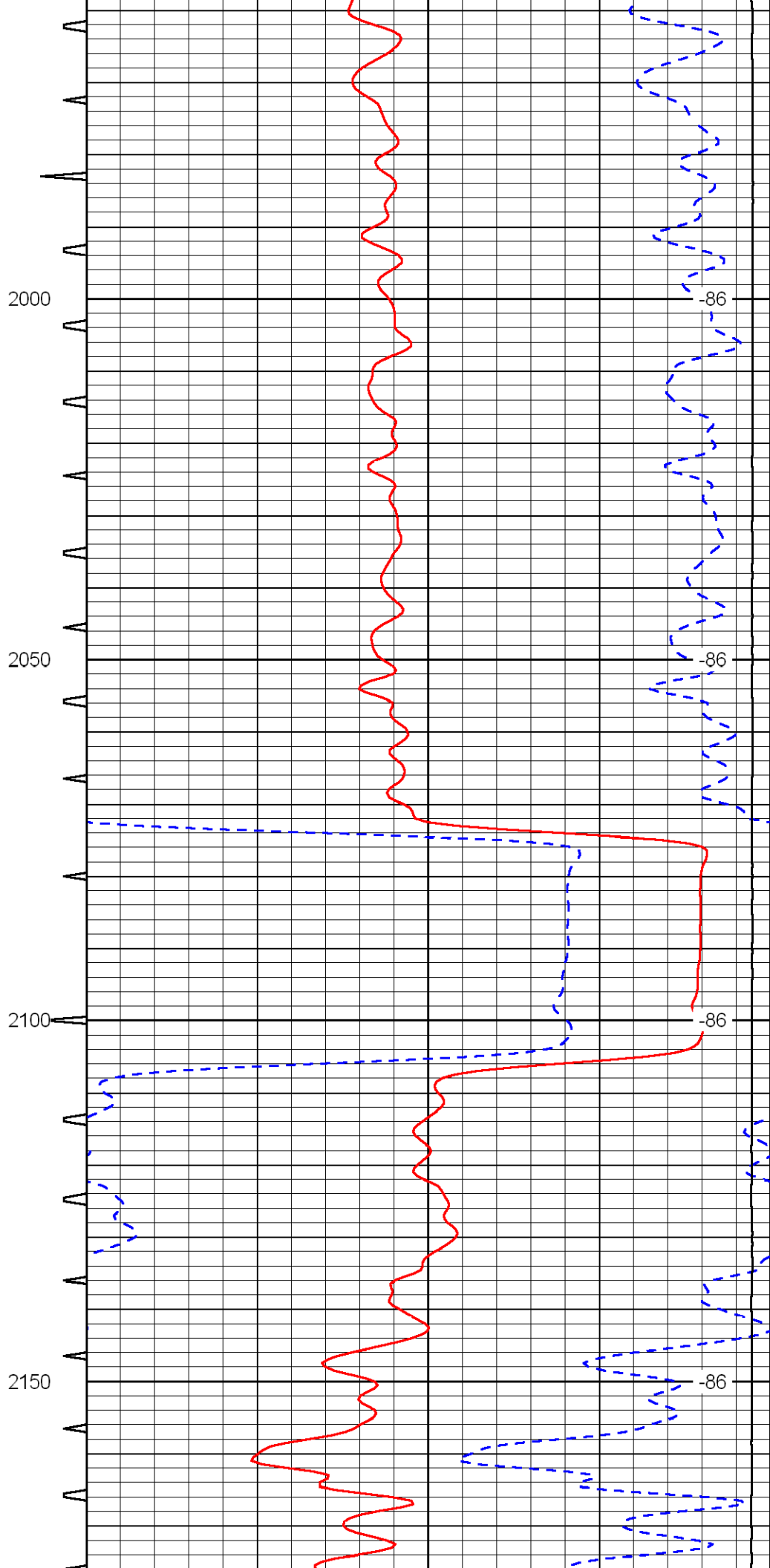
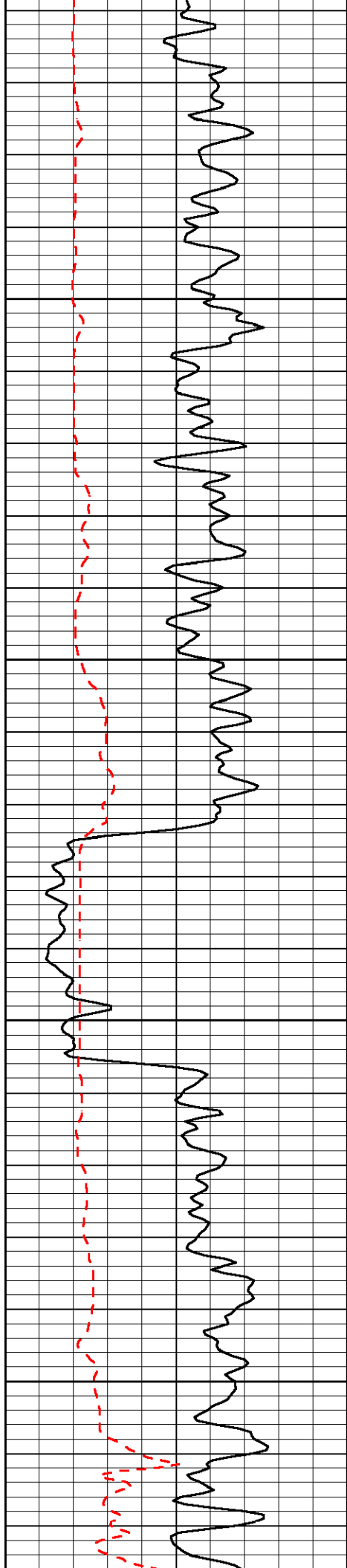


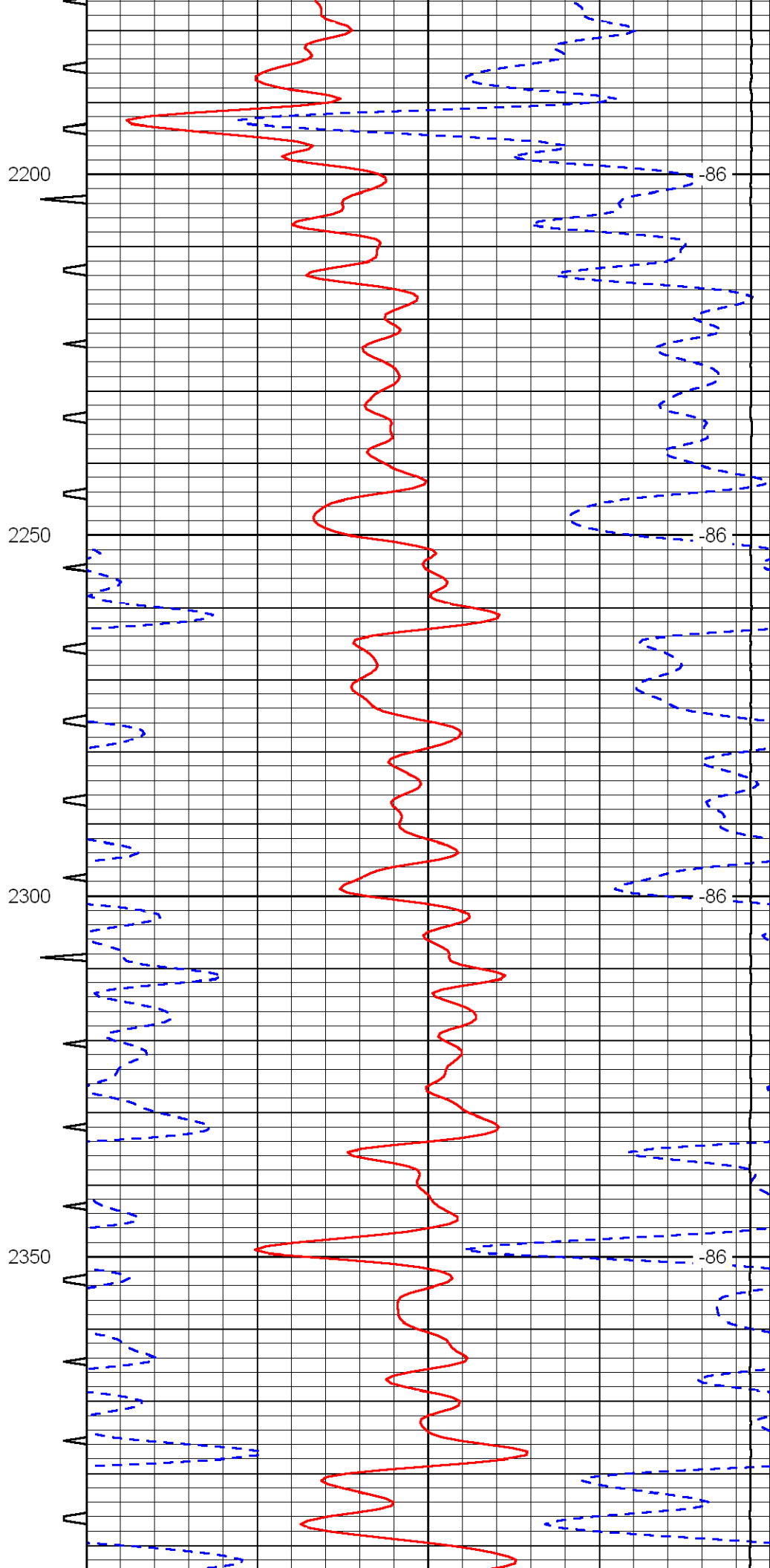
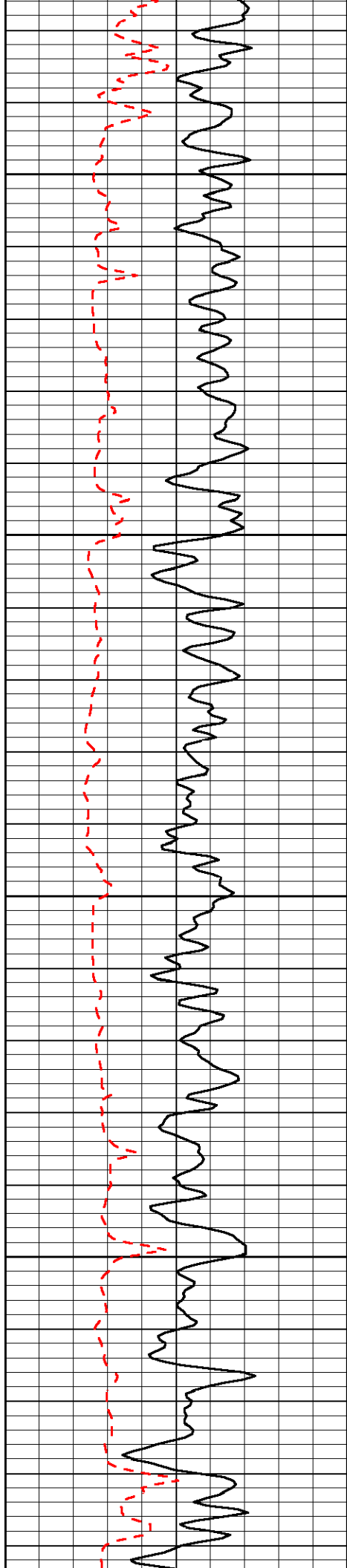


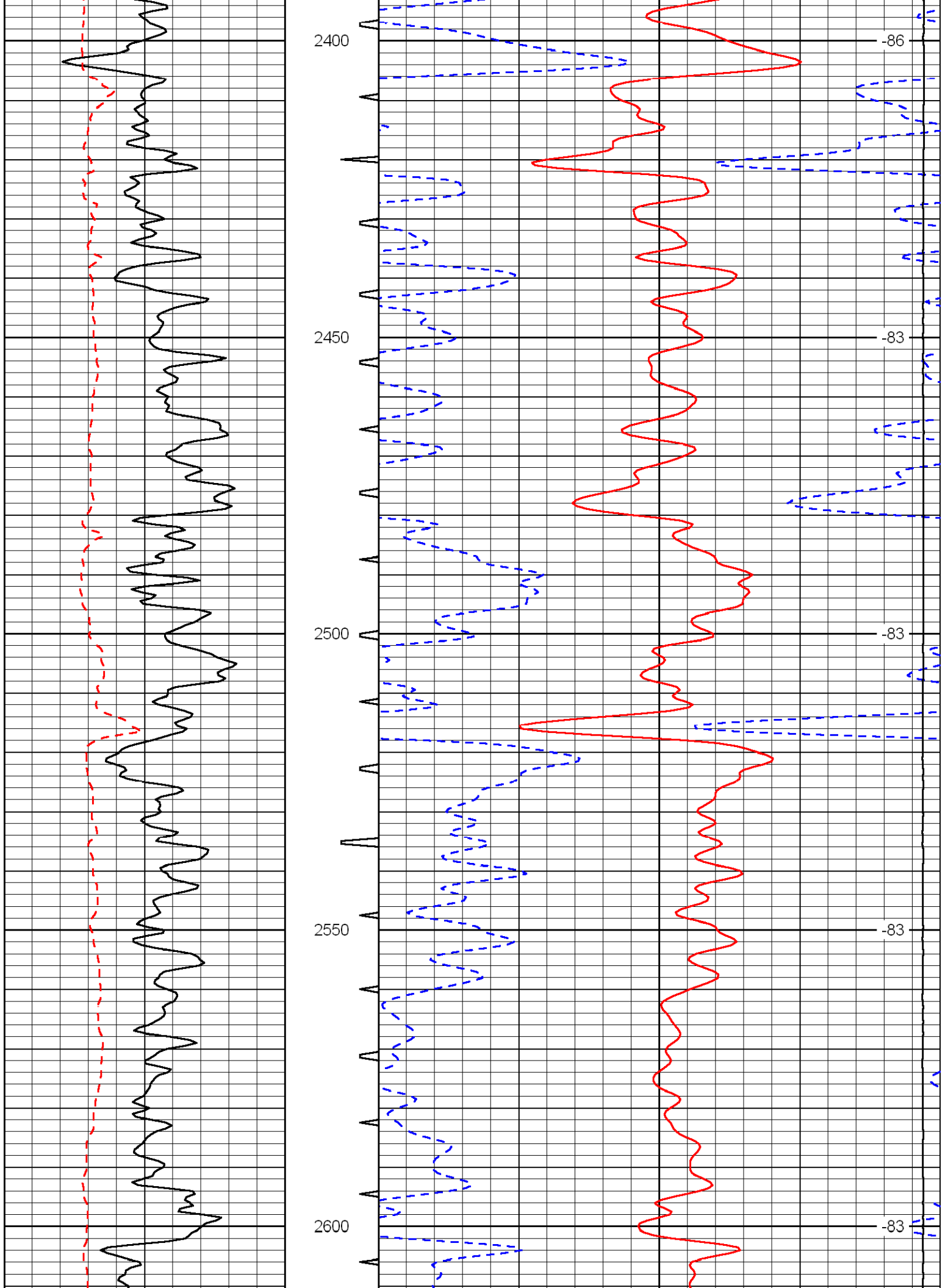


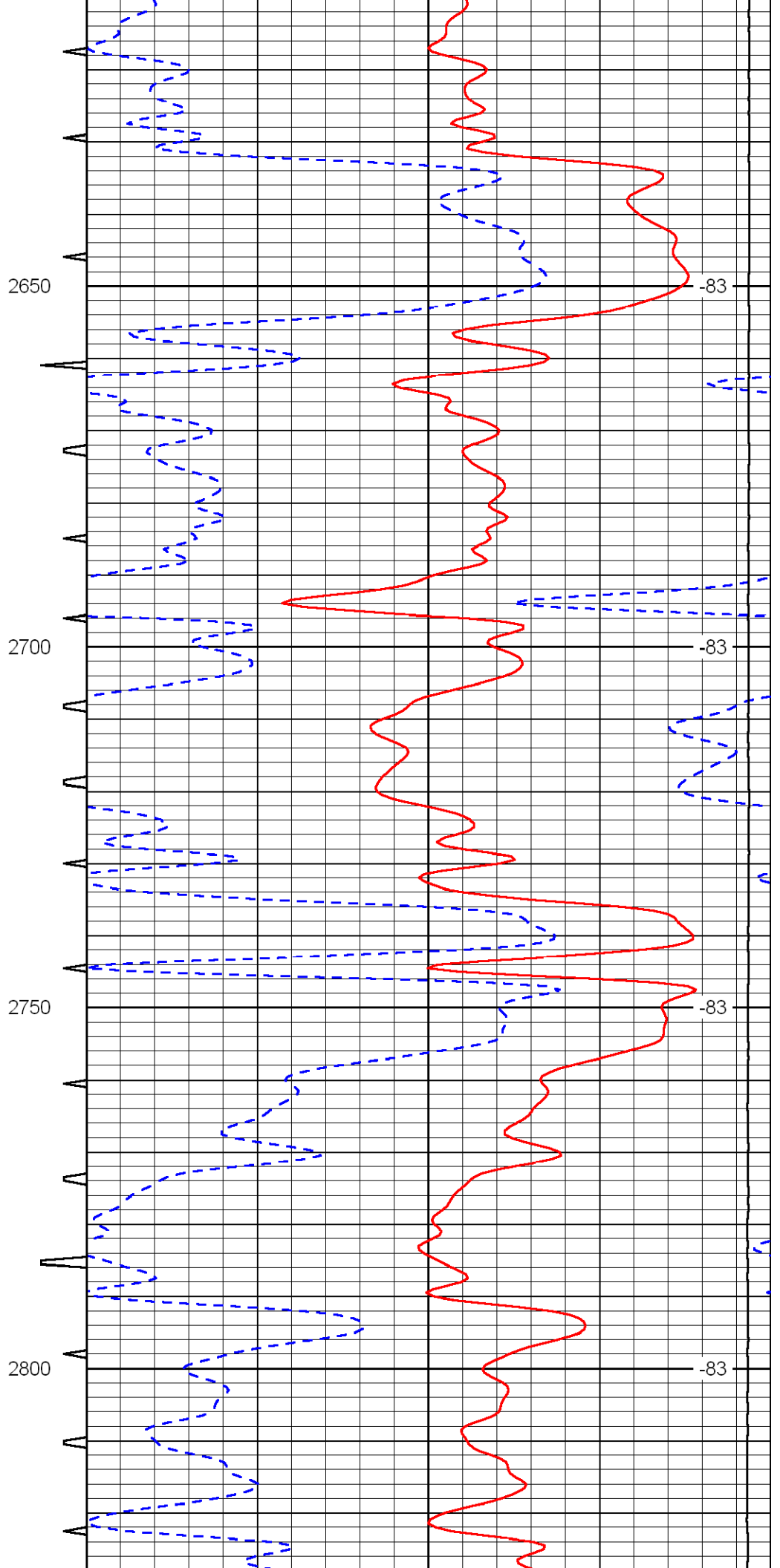
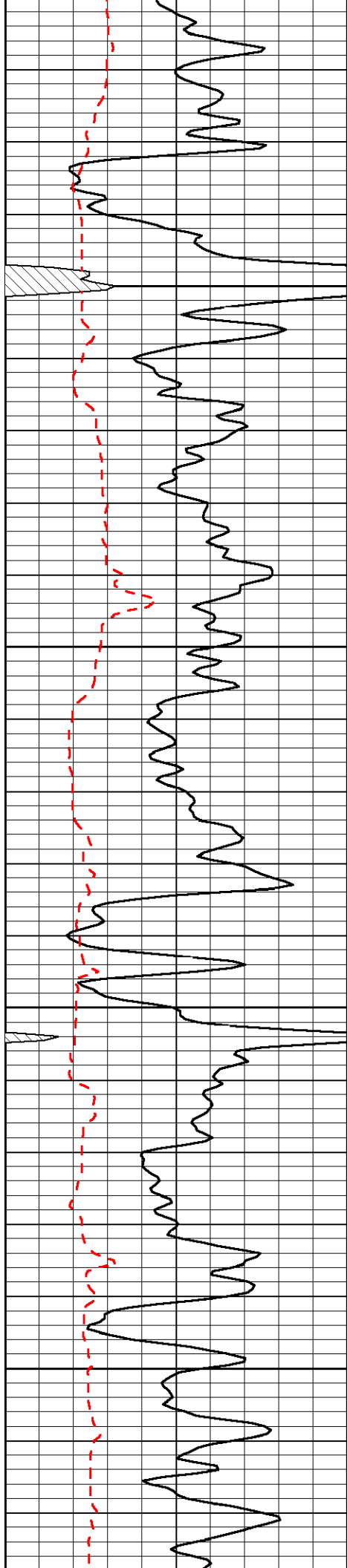


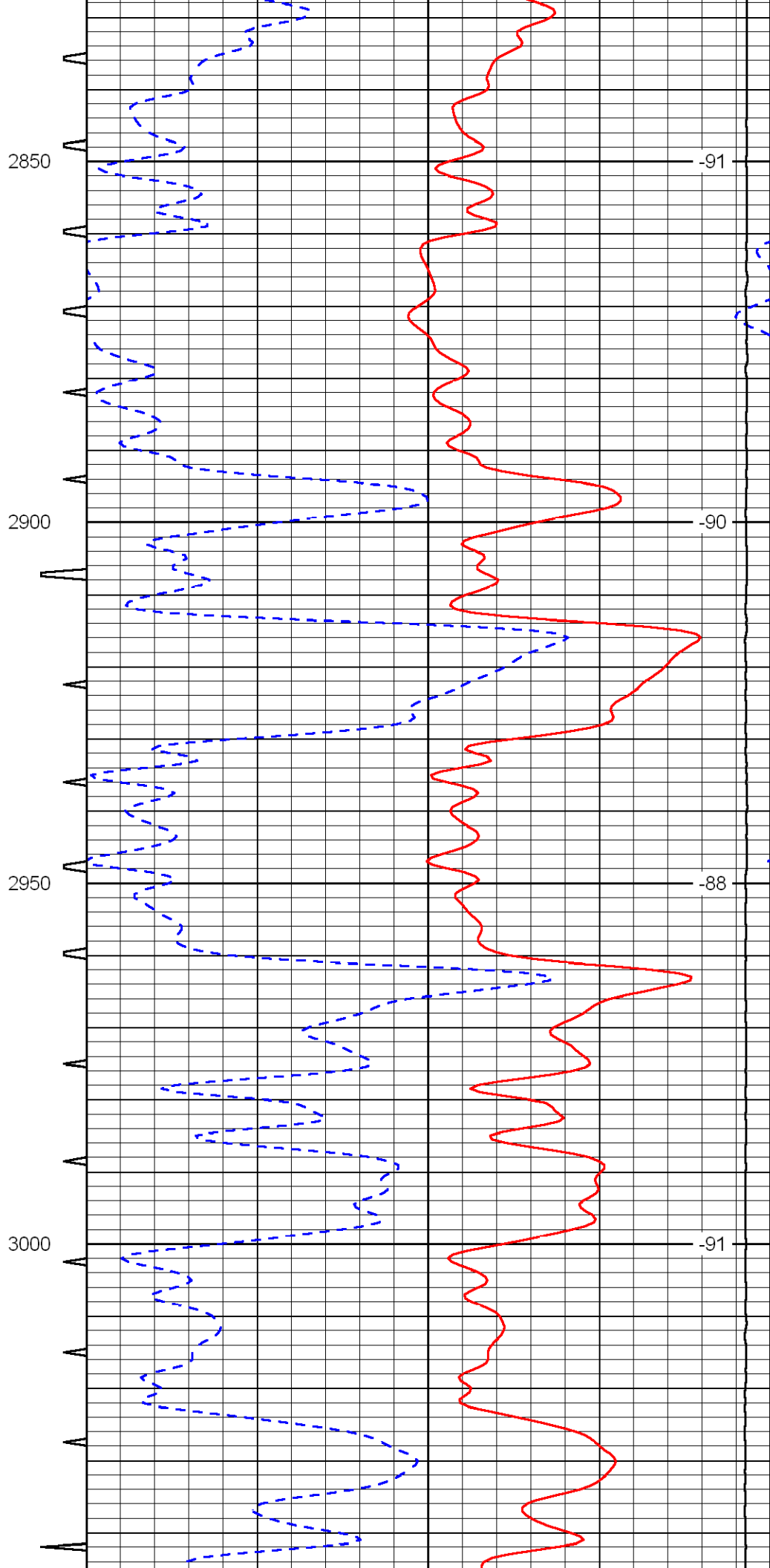
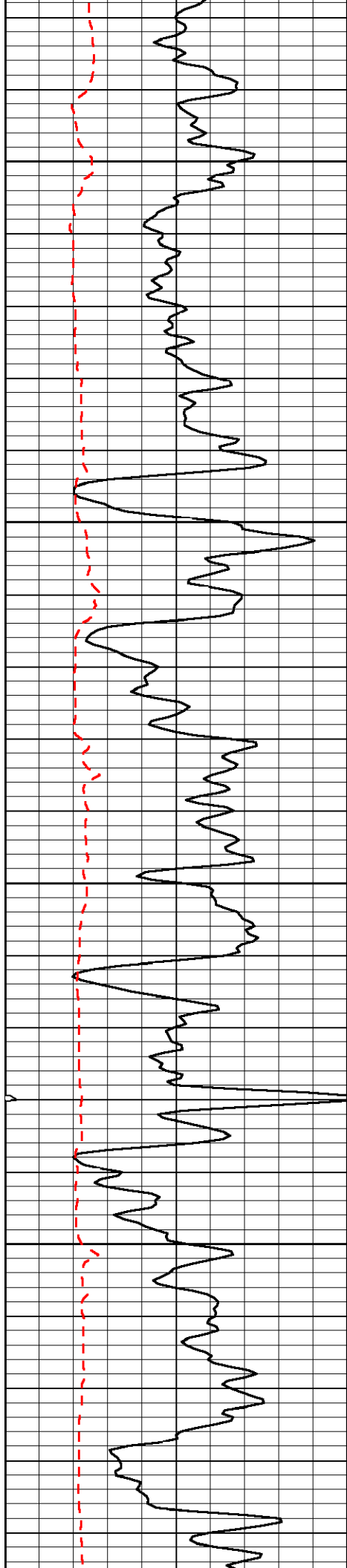


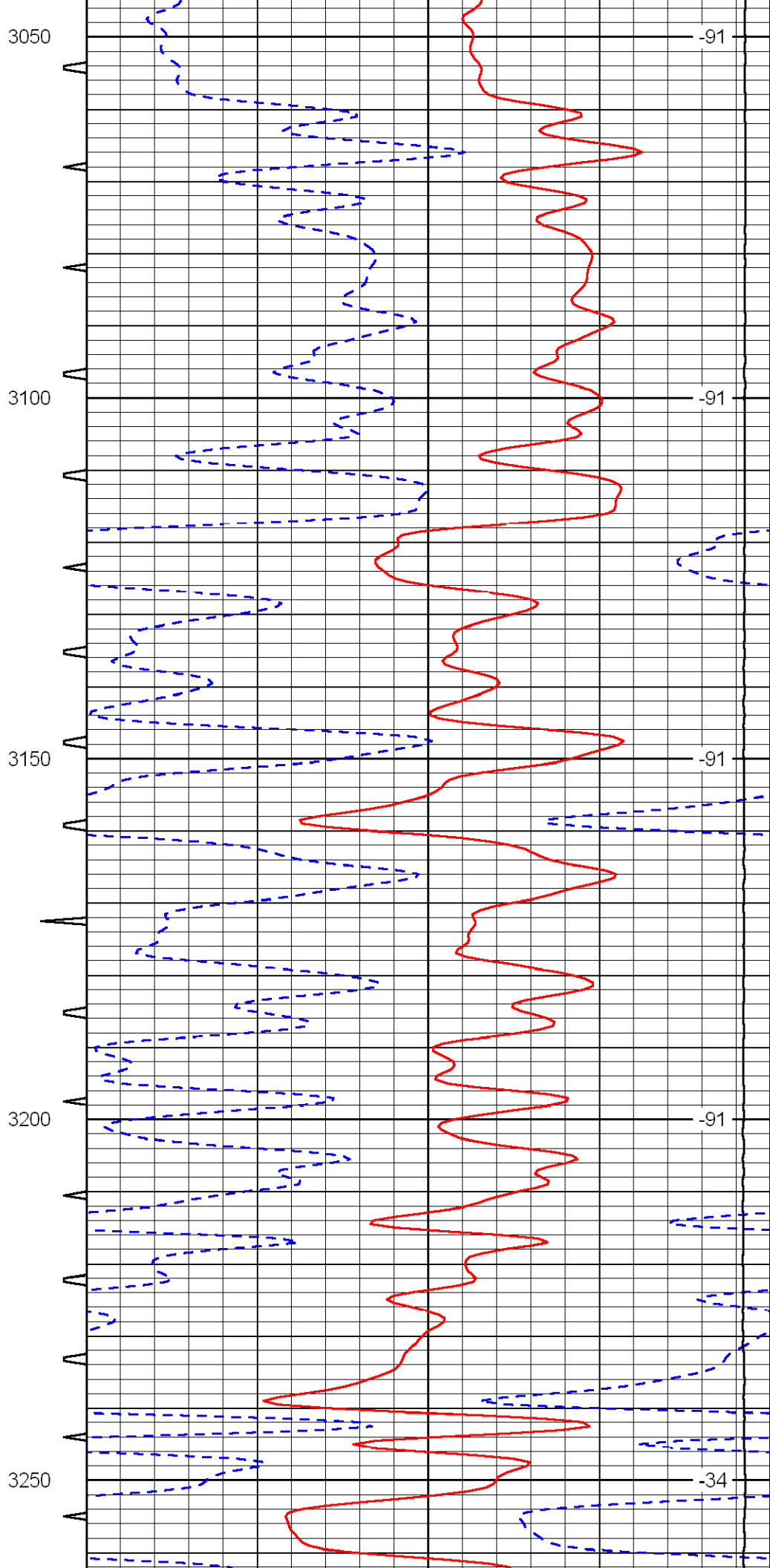
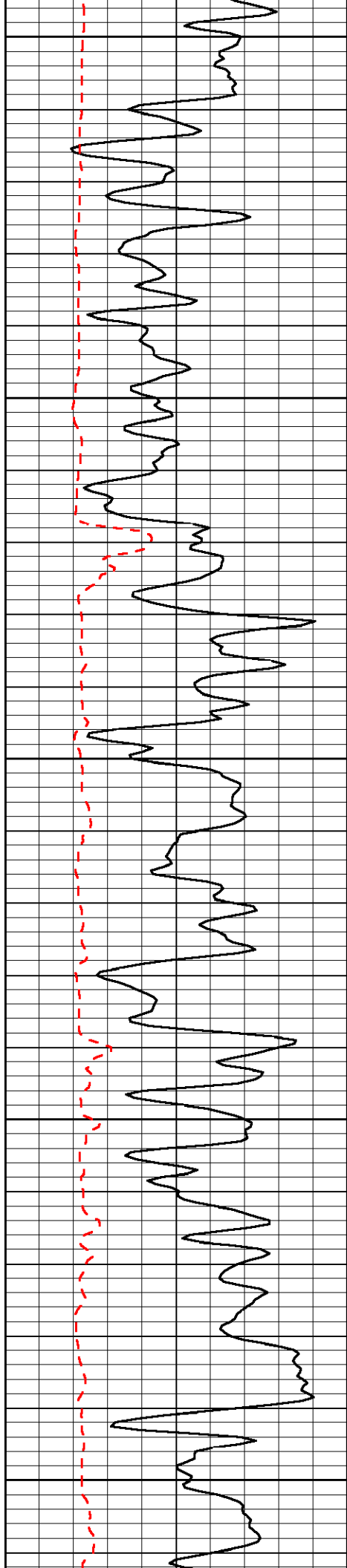


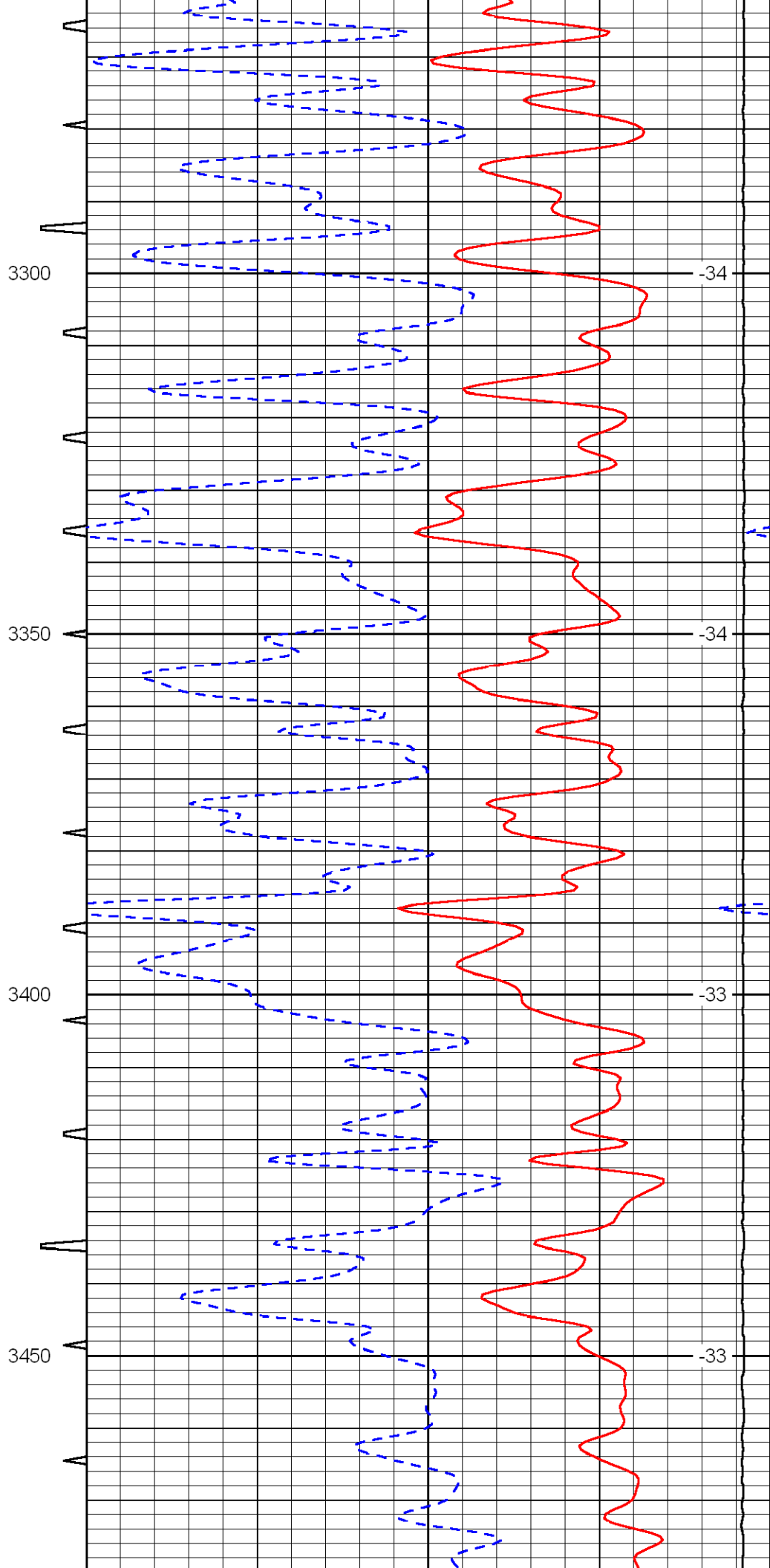
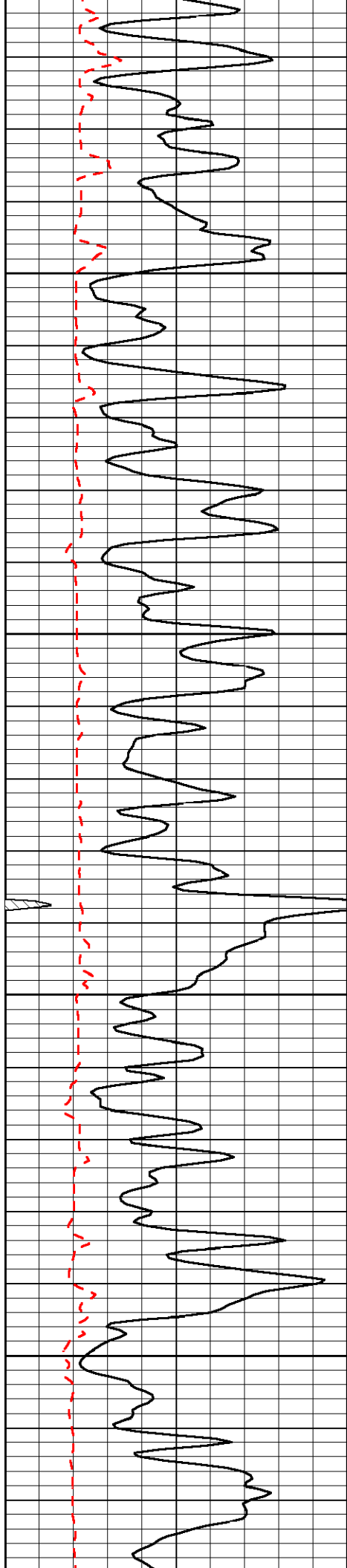


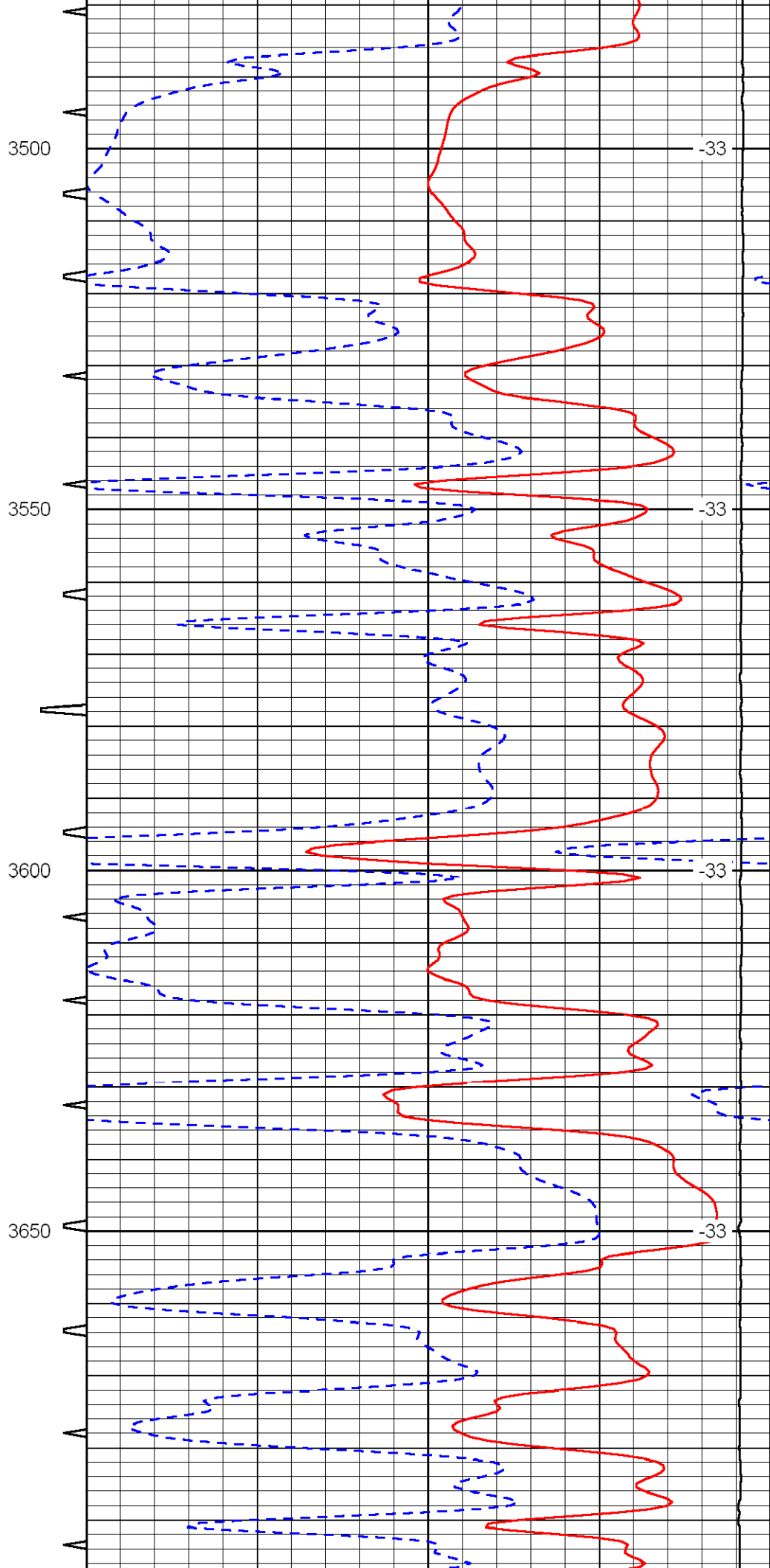
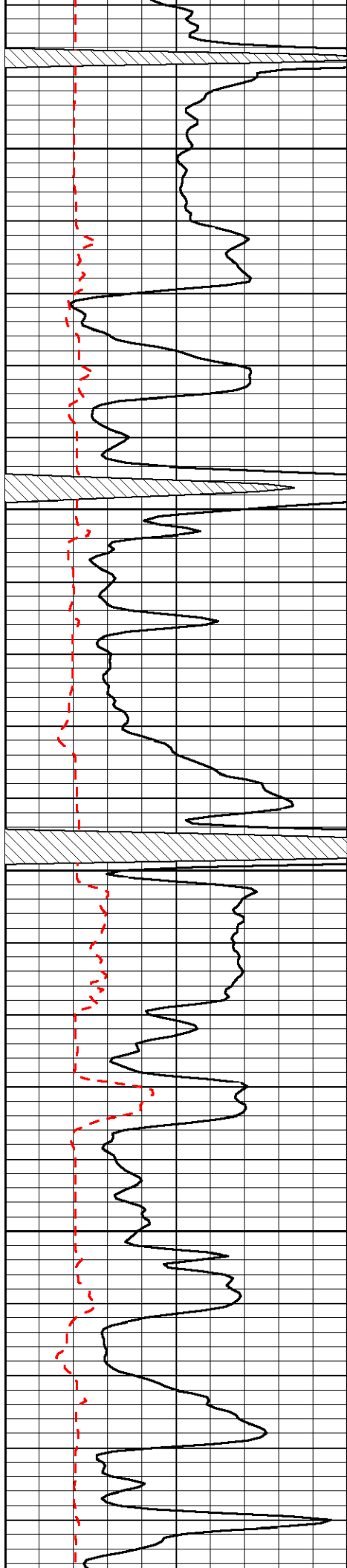


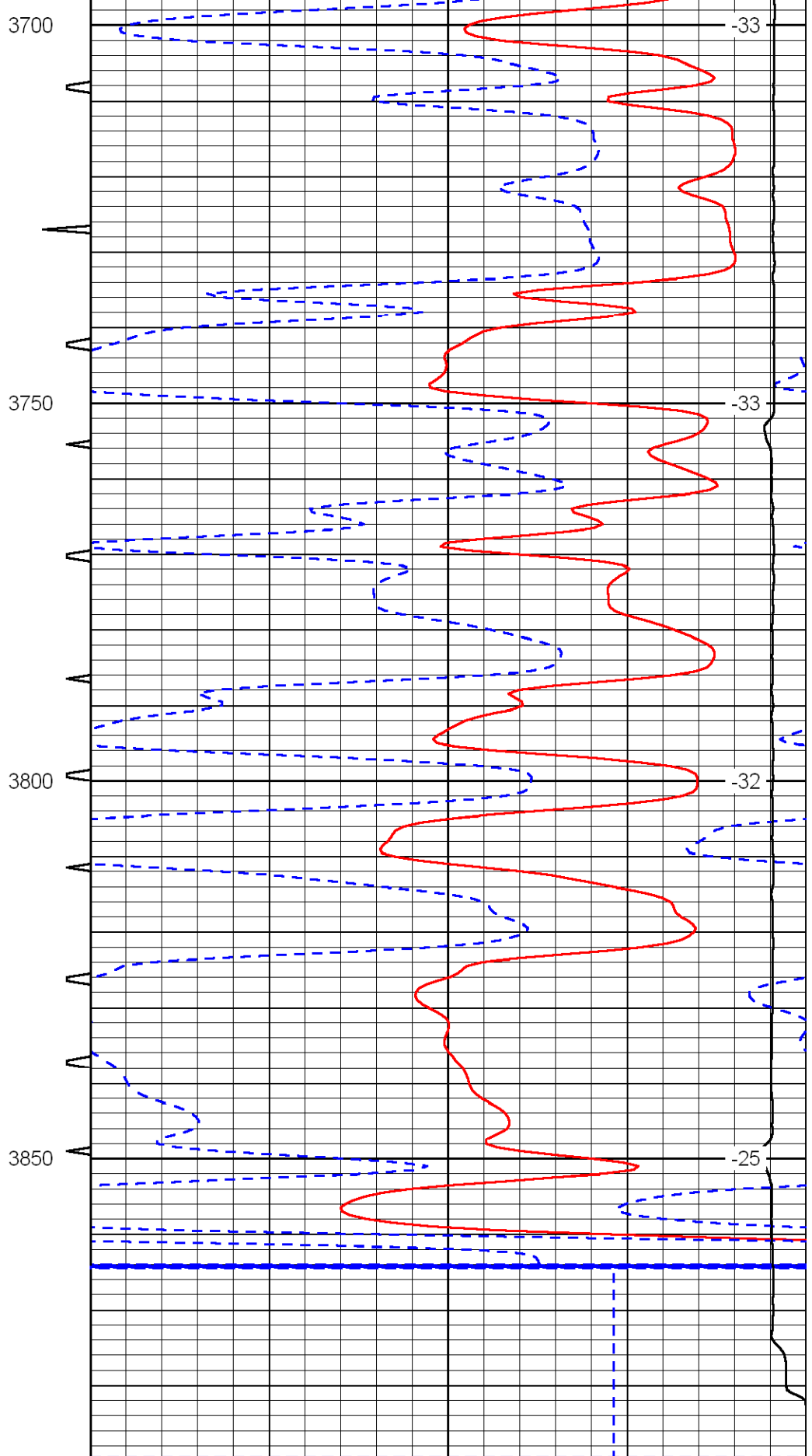
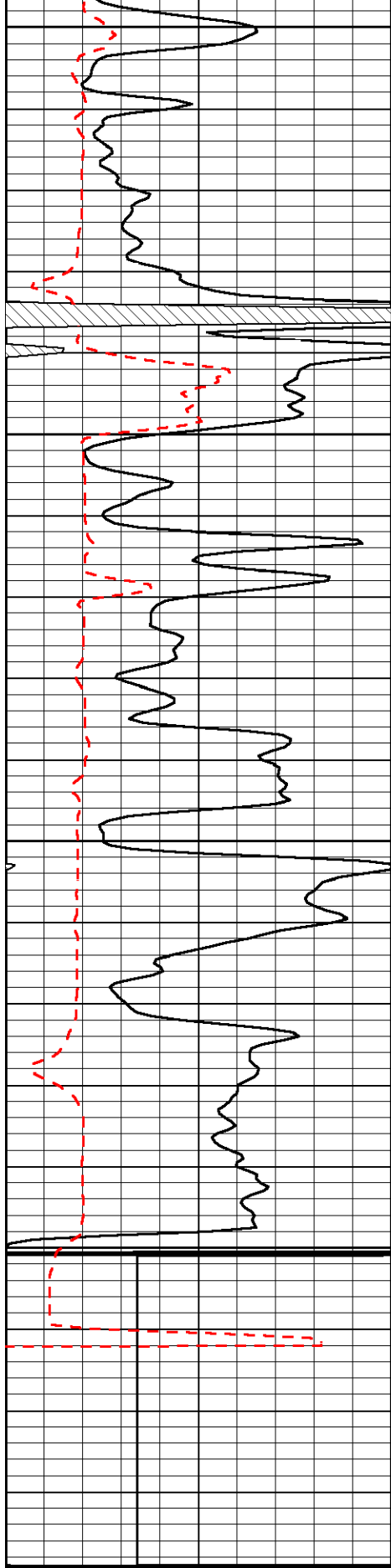












0	Gamma Ray	150	Sonic Int	140	Delta Time (usec/ft) (usec/ft)	40
150	Gamma Ray	300	5 (msec) 0	30	SPOR (pu)	-10
6	Caliper (in)	16		15000	LTEN (lb) (lb)	0

LSPD  
(ft/min)

