



# Microresistivity Log

DIGITAL LOG (785) 625-3858

API No.	15-065-23,606-00-00	
Company	H & C Oil Operating, Inc.	
Well	Myrill No. 6 - 1	
Field	Wildcat	
County	Graham	State
		Kansas
Location	1650' FSL & 1500' FWL	
Sec:	6	Twp: 6S Rge: 23W
Permanent Datum	Ground Level	Elevation 2431
Log Measured From	Kelly Bushing	5 Ft. Above Perm. Datum
Drilling Measured From	Kelly Bushing	
		Other Services CNL/CDL DIL/BHCS
		Elevation K.B. 2436 D.F. 2431 G.L. 2431

Date	01/07/2010
Run Number	Two
Depth Driller	3875
Depth Logger	3875
Bottom Logged Interval	3874
Top Log Interval	3250
Casing Driller	8.625 @ 293
Casing Logger	287
Bit Size	7.875
Type Fluid in Hole	Chemical
Salinity, ppm CL	4.400
Density / Viscosity	9.2 55
pH / Fluid Loss	10.0 7.8
Source of Sample	Flowline
Rm @ Meas. Temp	1.1 @ 65
Rmf @ Meas. Temp	.82 @ 65
Rmc @ Meas. Temp	1.48 @ 65
Source of Rmf / Rmc	Charts
Rm @ BHT	.61 @ 117
Operating Rig Time	5 Hours
Max Rec. Temp. F	117
Equipment Number	10
Location	Hays
Recorded By	Jason Wellbrock
Witnessed By	Al Downing

<<< Fold Here >>>

All interpretations are opinions based on inferences from electrical or other measurements and we cannot and do not guarantee the accuracy or correctness of any interpretation, and we shall not, except in the case of gross or willful negligence on our part, be liable or responsible for any loss, costs, damages, or expenses incurred or sustained by anyone resulting from any interpretation made by any of our officers, agents or employees. These interpretations are also subject to our general terms and conditions set out in our current Price Schedule.

Comments

Thank you for using Log-Tech, Inc.  
(785) 625-3858

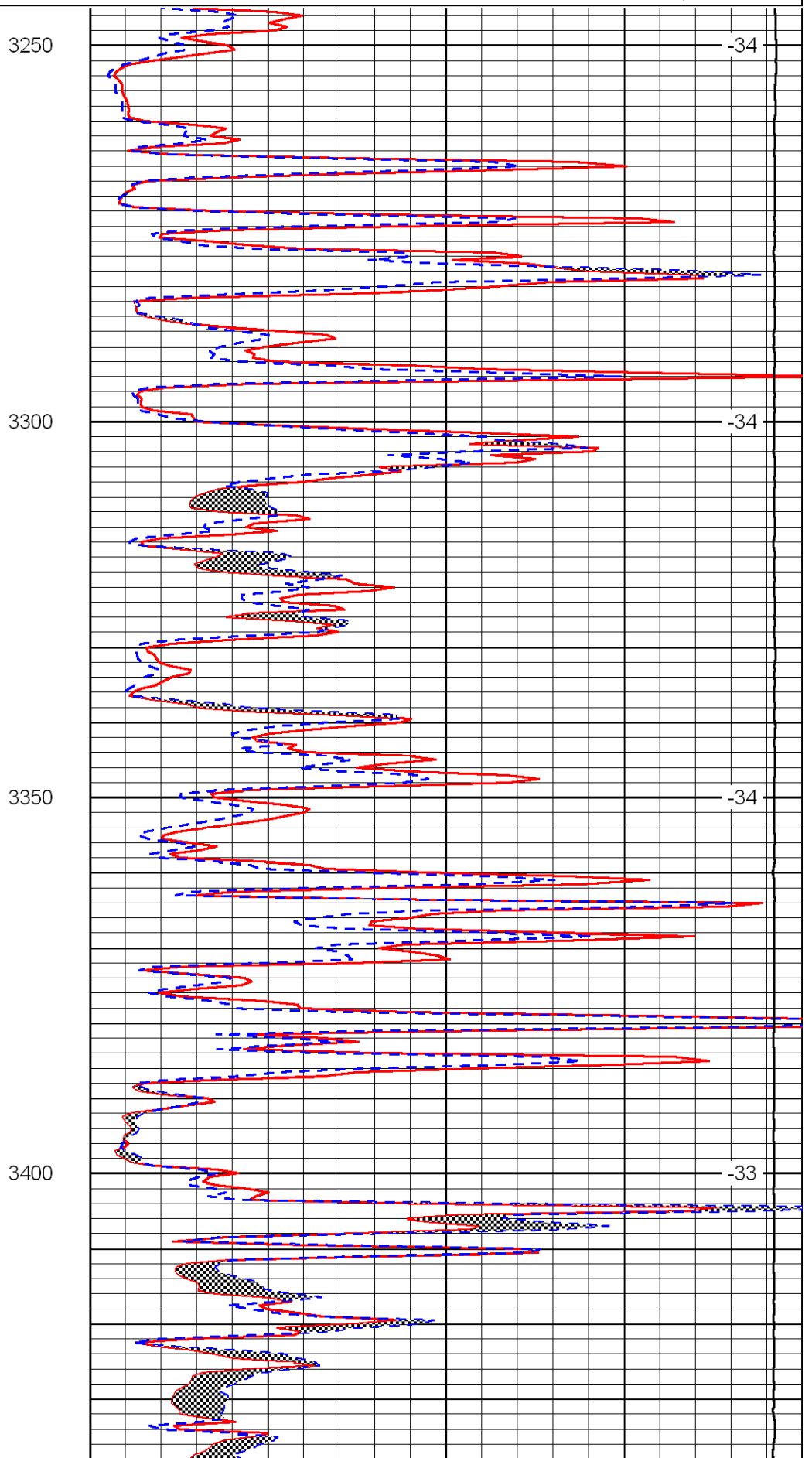
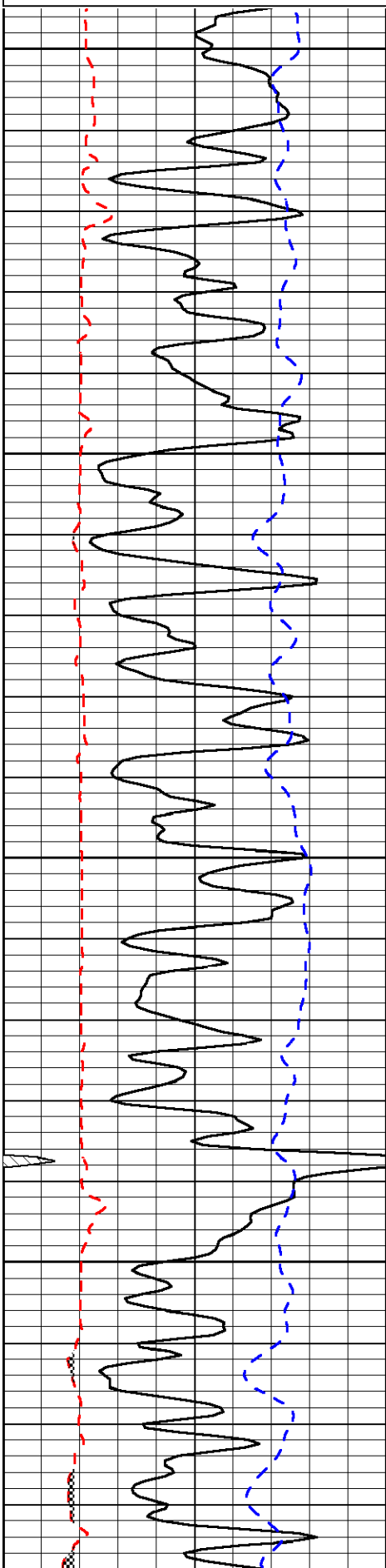
Hill City 12 S, 5 W, 1 N, E Into

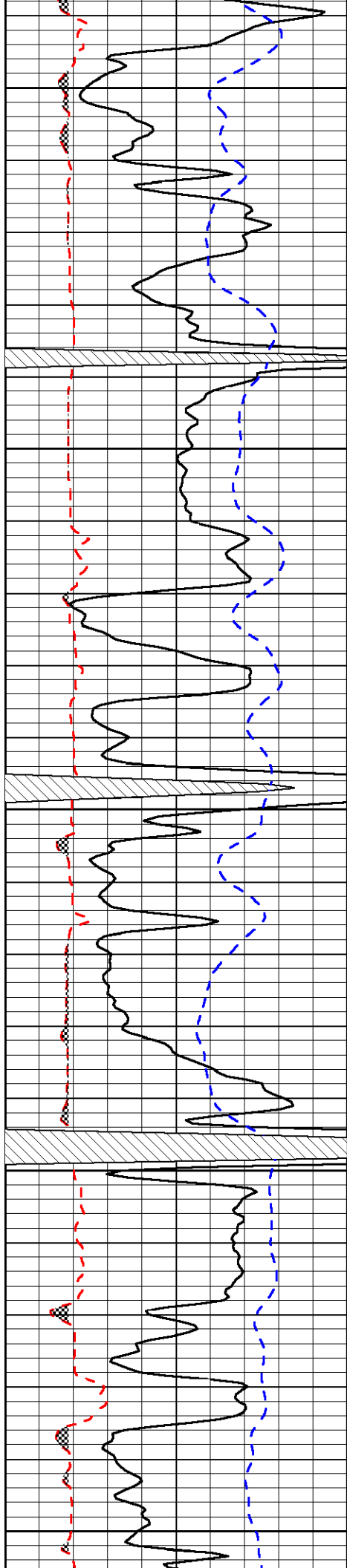
Database File: c:\warrior\data\h&c\_wyrill no. 6 - 1\hchd.db  
 Dataset Pathname: dil/hc2in  
 Presentation Format: micro  
 Dataset Creation: Thu Jan 07 11:58:27 2010  
 Charted by: Depth in Feet scaled 1:240

0	Gamma Ray	150
6	Micro Log Caliper (in)	16
-200	SP (MV)	0

0	Micro Inverse 1 X 1 (Ohm-m)	40
0	Micro Normal 2" (Ohm-m)	40
15000	Line Weight (lb)	0

LSPD  
(ft/min)





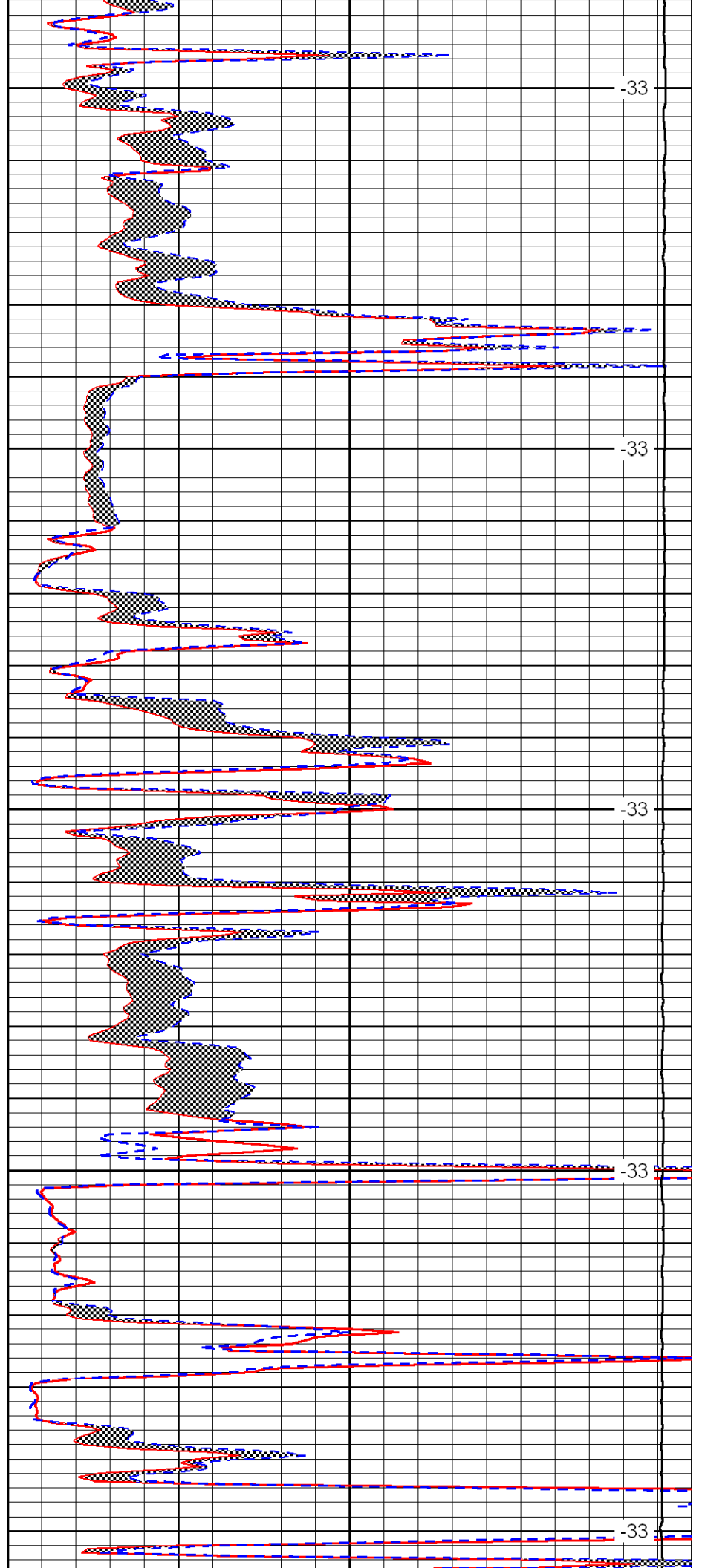
3450

3500

3550

3600

3650



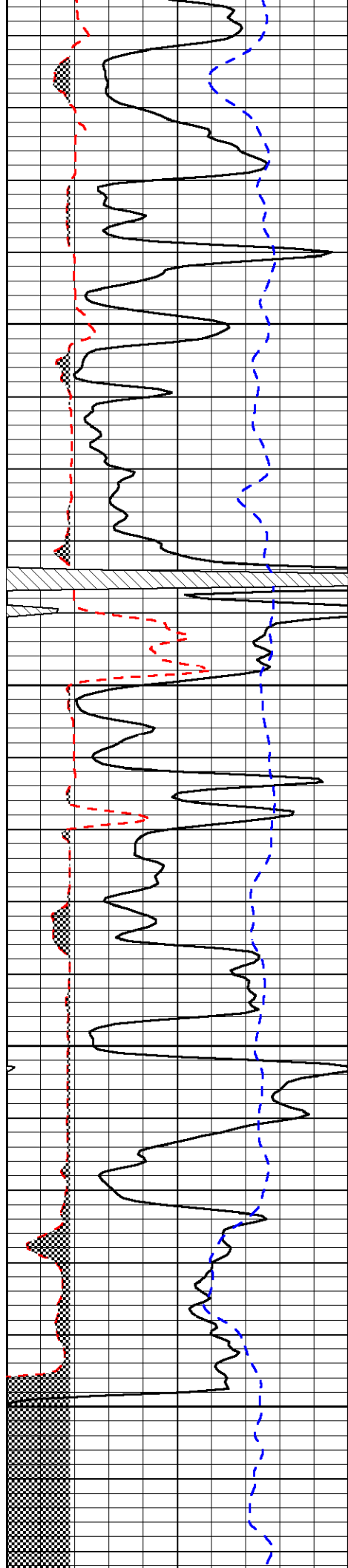
-33

-33

-33

-33

-33

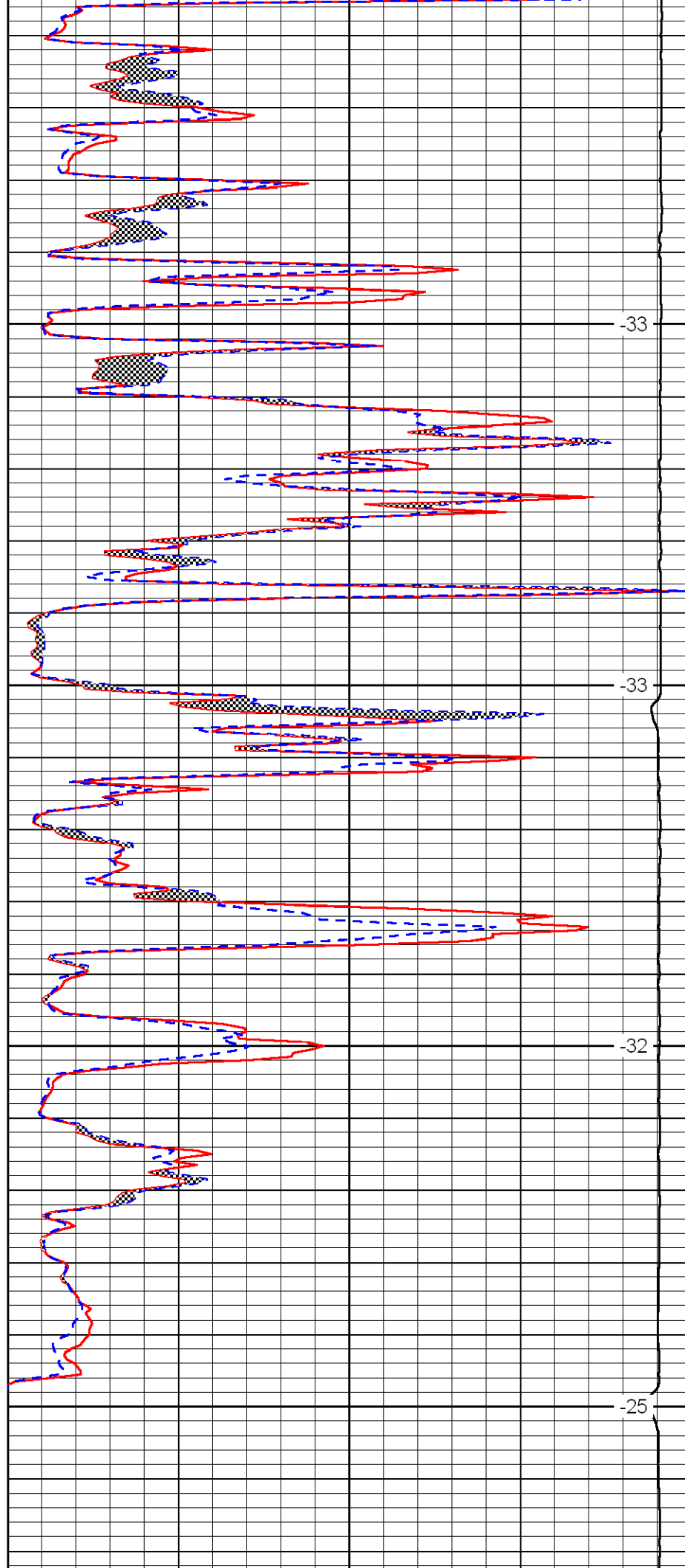


3700

3750

3800

3850

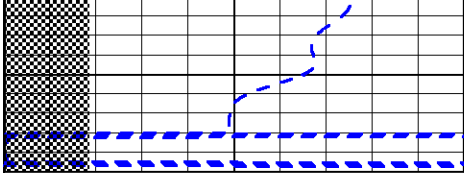


-33

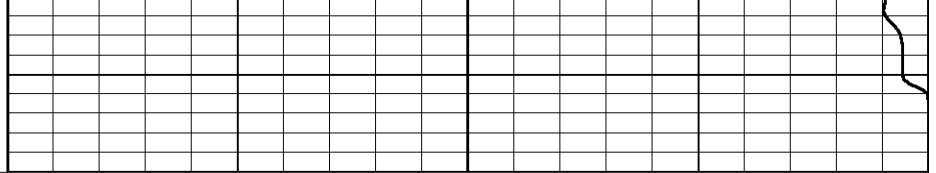
-33

-32

-25



0	Gamma Ray	150
6	Micro Log Caliper (in)	16
-200	SP (MV)	0



0	Micro Inverse 1 X 1 (Ohm-m)	40
0	Micro Normal 2'' (Ohm-m)	40
15000	Line Weight (lb)	0

LSPD  
(ft/min)