



# Dual Induction Log

DIGITAL LOG (785) 625-3858

API No.	15-065-23,606-00-00		
Company	H & C Oil Operating, Inc.		
Well	Myrill No. 6 - 1		
Field	Wildcat		
County	Graham	State	Kansas
Location	1650' FSL & 1500' FWL		
Sec:	6	Twp:	6S Rge: 23W
Permanent Datum	Ground Level	Elevation	2431
Log Measured From	Kelly Bushing	5 Ft. Above Perm. Datum	
Drilling Measured From	Kelly Bushing		
		Other Services	CNL/CDL MEL/BHCS
		Elevation	K.B. 2436 D.F. 2431 G.L. 2431

Date	01/07/2010	
Run Number	One	
Depth Driller	3875	
Depth Logger	3875	
Bottom Logged Interval	3874	
Top Log Interval	250	
Casing Driller	8.625 @ 293	
Casing Logger	287	
Bit Size	7.875	
Type Fluid in Hole	Chemical	
Salinity, ppm CL	4.400	
Density / Viscosity	9.2	55
pH / Fluid Loss	10.0	7.8
Source of Sample	Flowline	
Rm @ Meas. Temp	1.1 @ 65	
Rmf @ Meas. Temp	.82 @ 65	
Rmc @ Meas. Temp	1.48 @ 65	
Source of Rmf / Rmc	Charts	
Rm @ BHT	.61 @ 117	
Operating Rig Time	5 Hours	
Max Rec. Temp. F	117	
Equipment Number	10	
Location	Hays	
Recorded By	Jason Wellbrock	
Witnessed By	Al Downing	

<<< Fold Here >>>

All interpretations are opinions based on inferences from electrical or other measurements and we cannot and do not guarantee the accuracy or correctness of any interpretation, and we shall not, except in the case of gross or willful negligence on our part, be liable or responsible for any loss, costs, damages, or expenses incurred or sustained by anyone resulting from any interpretation made by any of our officers, agents or employees. These interpretations are also subject to our general terms and conditions set out in our current Price Schedule.

### Comments

Thank you for using Log-Tech, Inc.  
(785) 625-3858

Hill City 12 S, 5 W, 1 N, E Into

Database File: c:\warrior\data\h&c\_wyrill no. 6 - 1\hchd.db  
 Dataset Pathname: dil/hc2in  
 Presentation Format: dil2in  
 Dataset Creation: Thu Jan 07 11:58:27 2010  
 Charted by: Depth in Feet scaled 1:600

0 Gamma Ray 150  
-200 SP (MV) 0

0 Shallow Resistivity (Ohm-m) 50

0 Deep Resistivity (Ohm-m) 50

LSPD  
(ft/min)

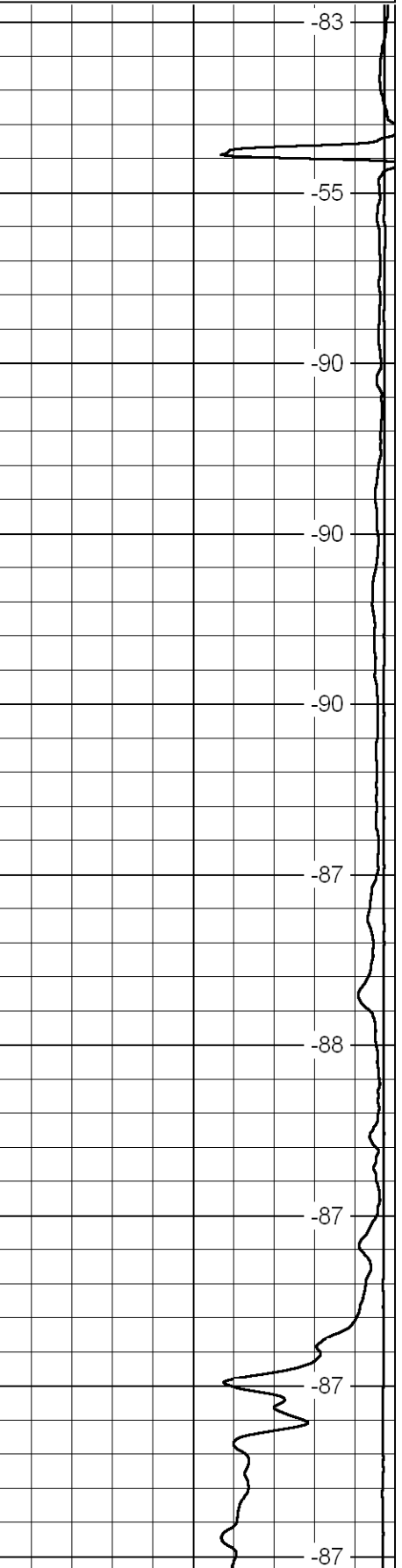
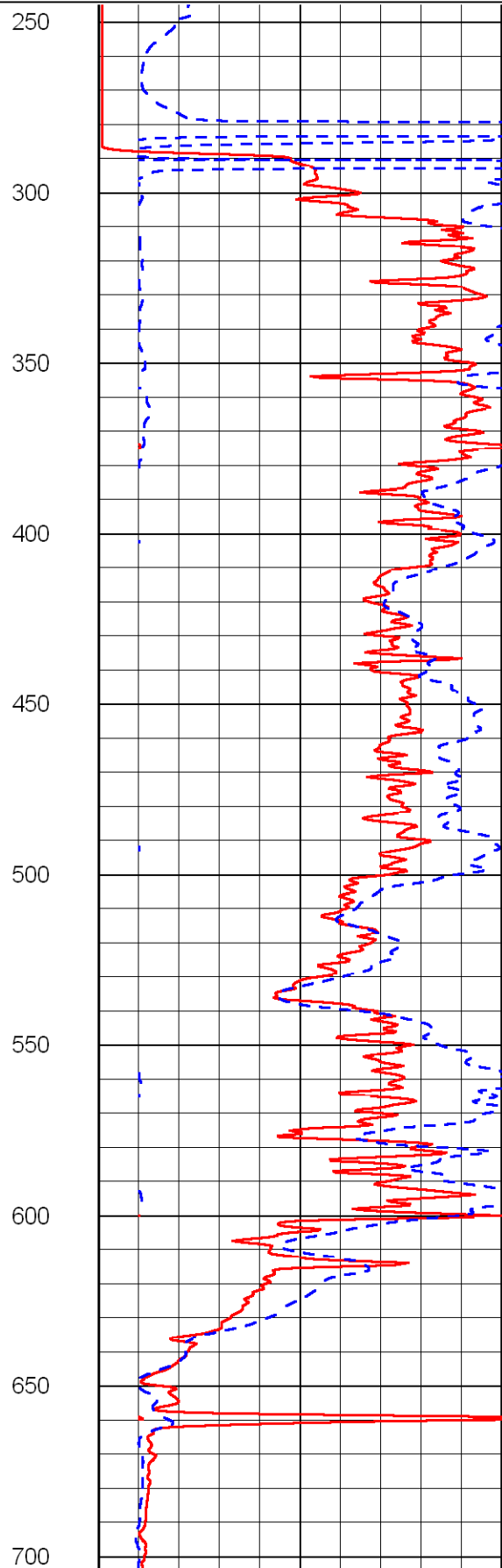
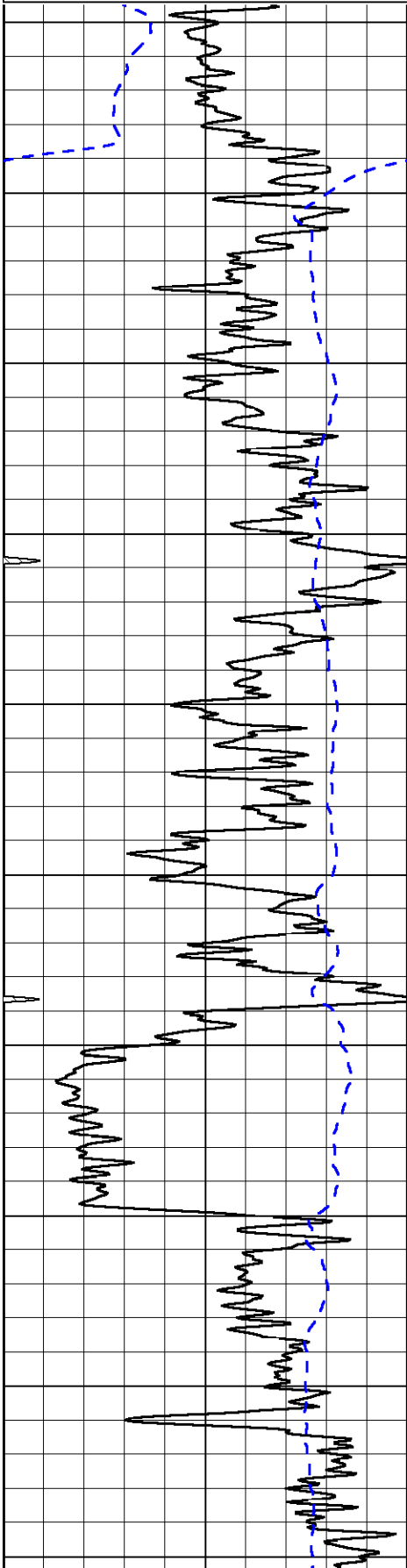
1000 Conductivity (mmho/m) 0

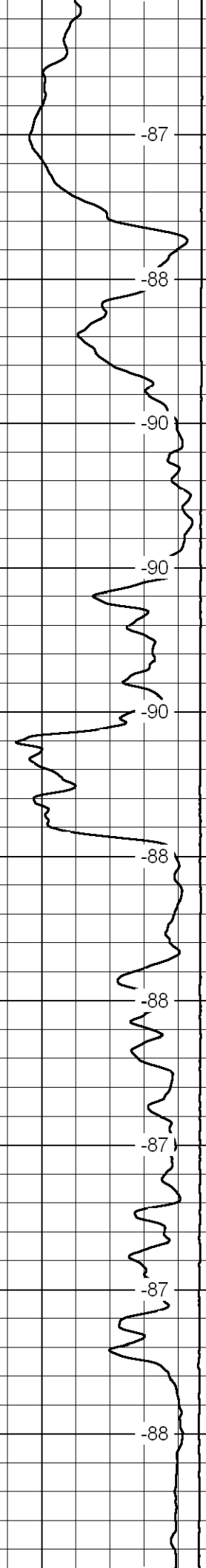
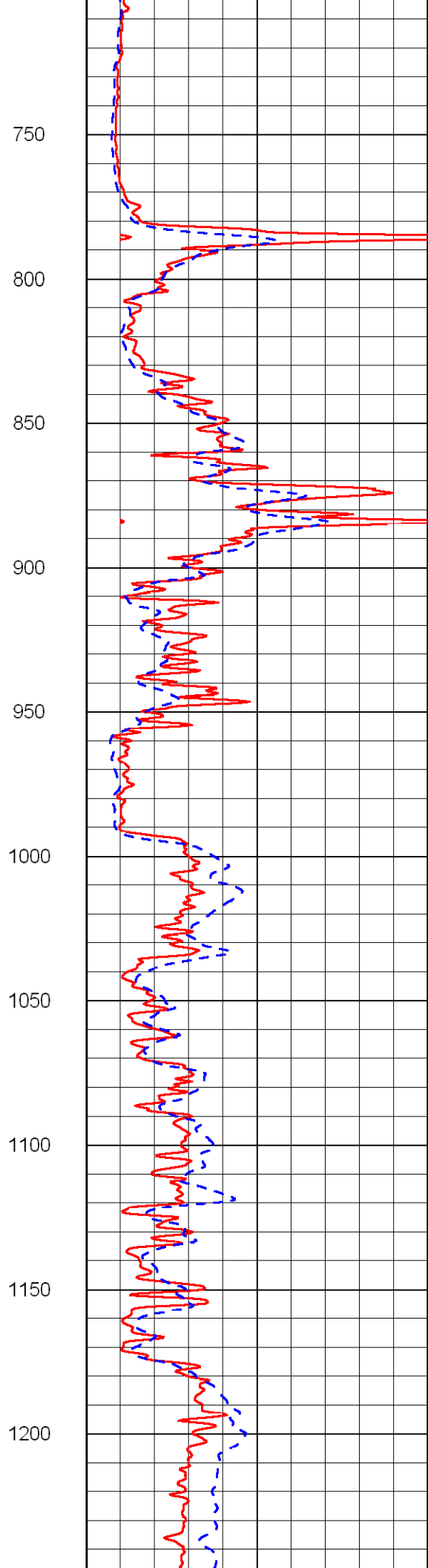
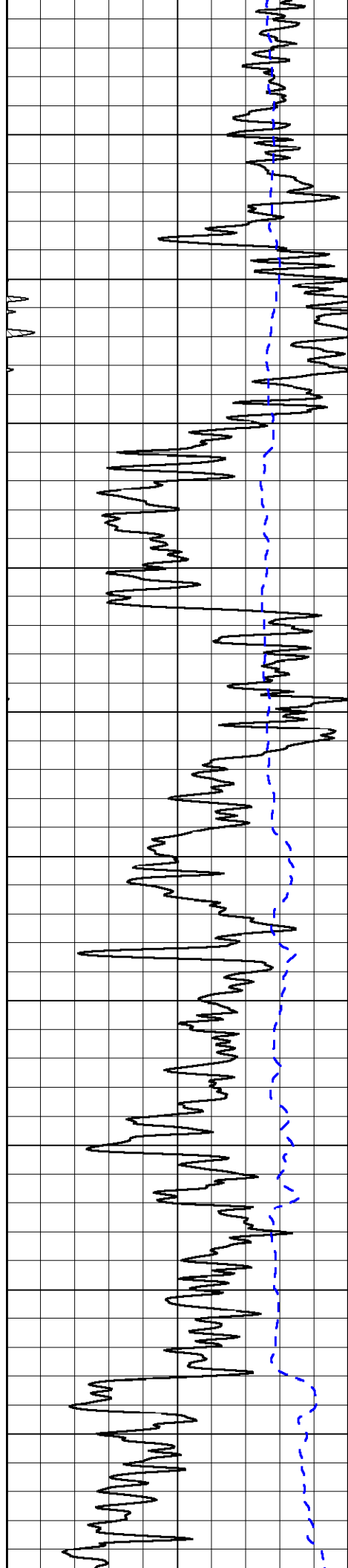
15000 Line Tension (lb) 0

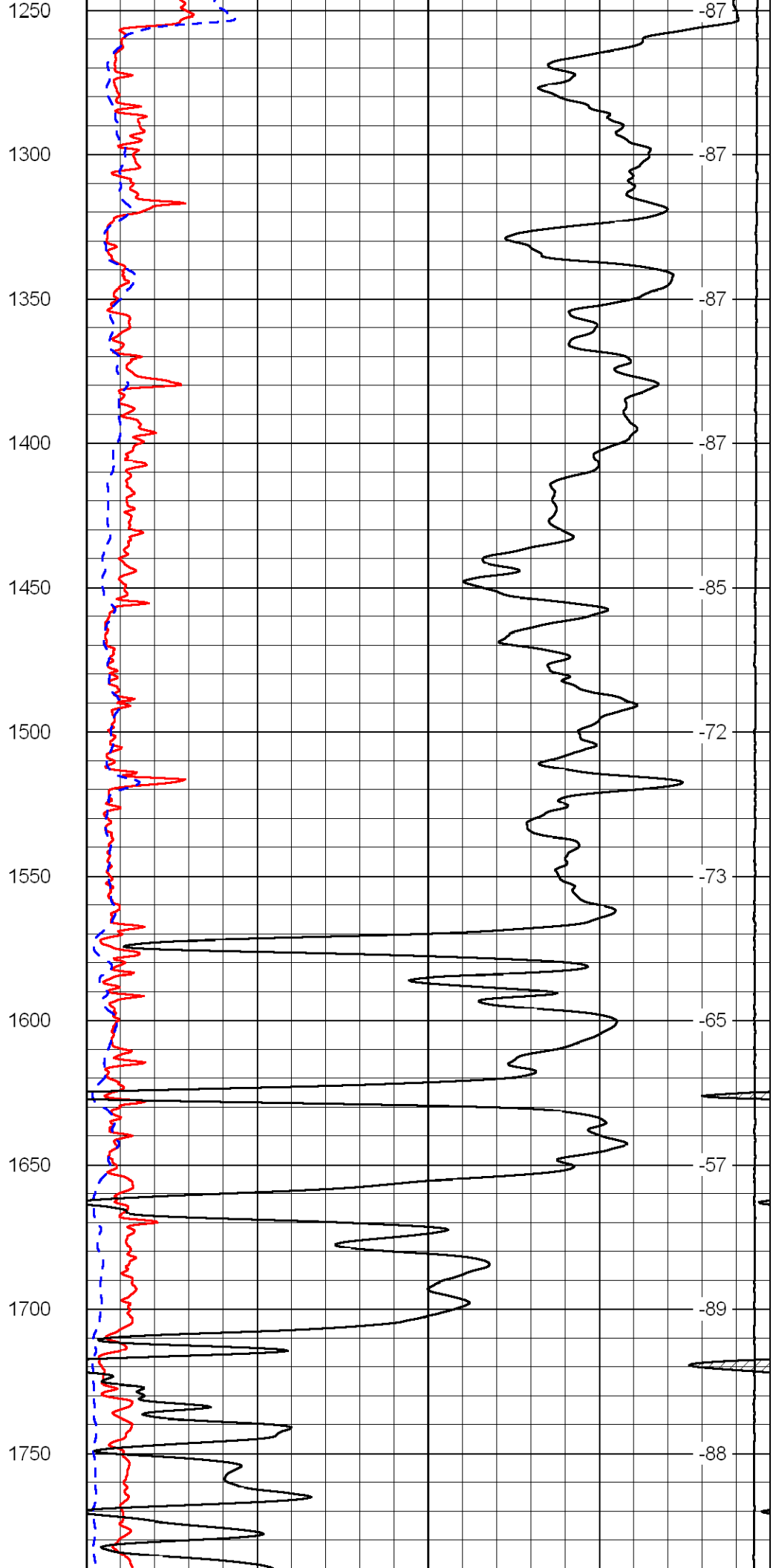
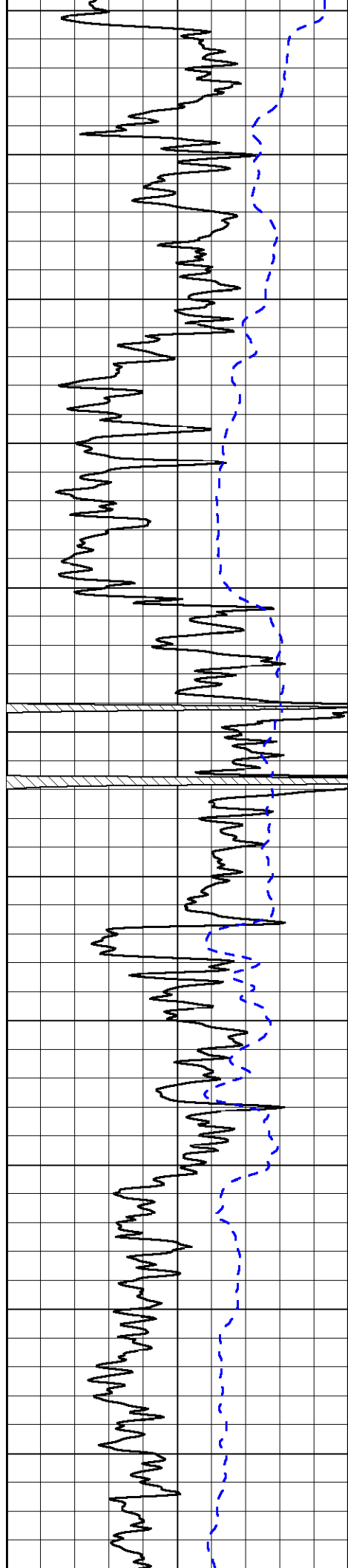
Shallow Resistivity

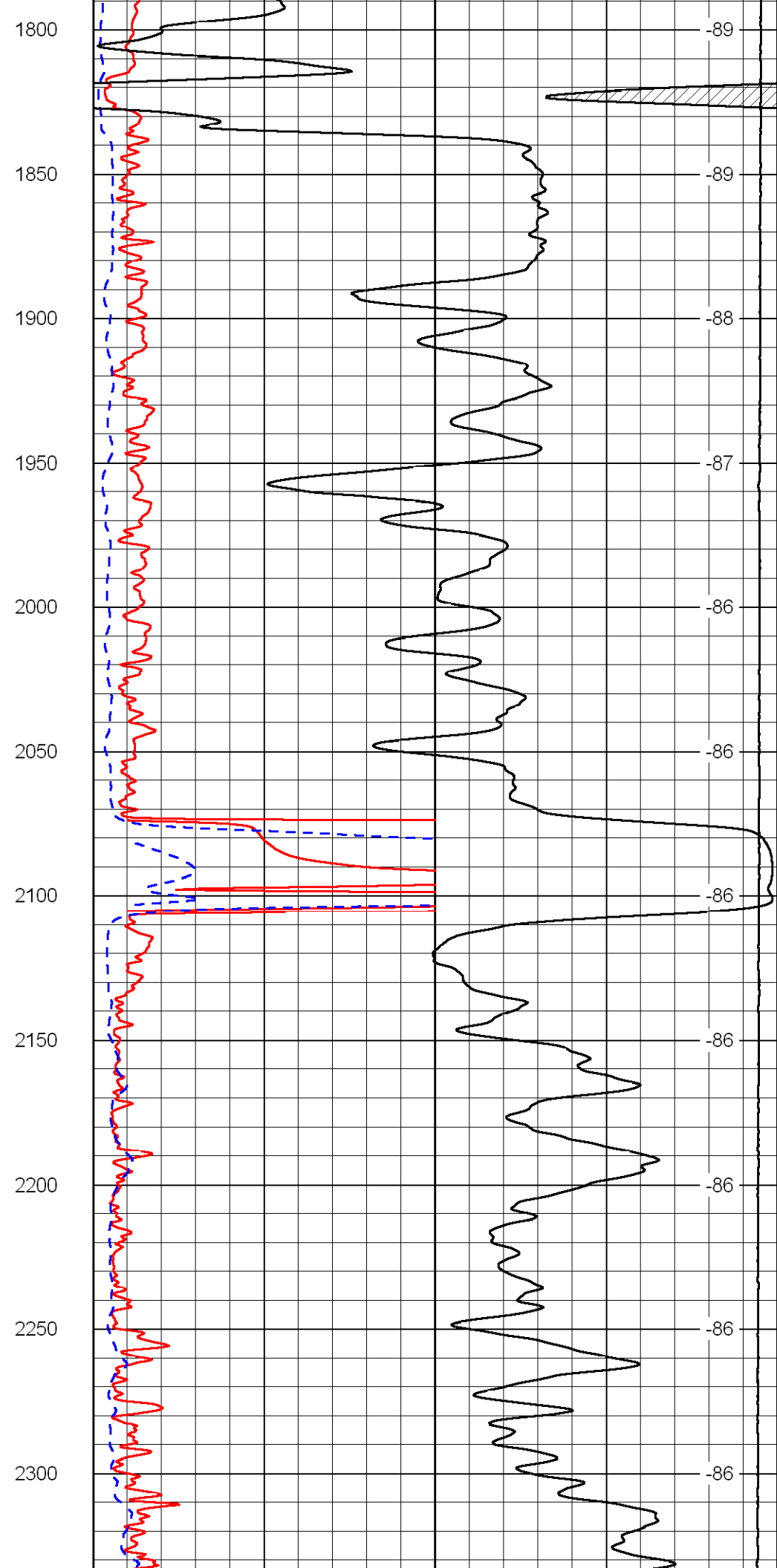
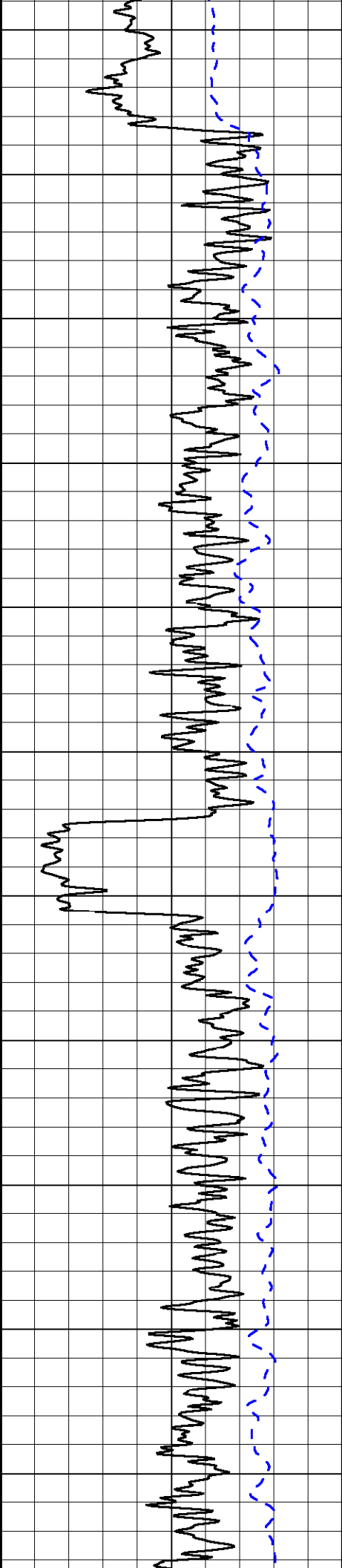
50 (Ohm-m) 500

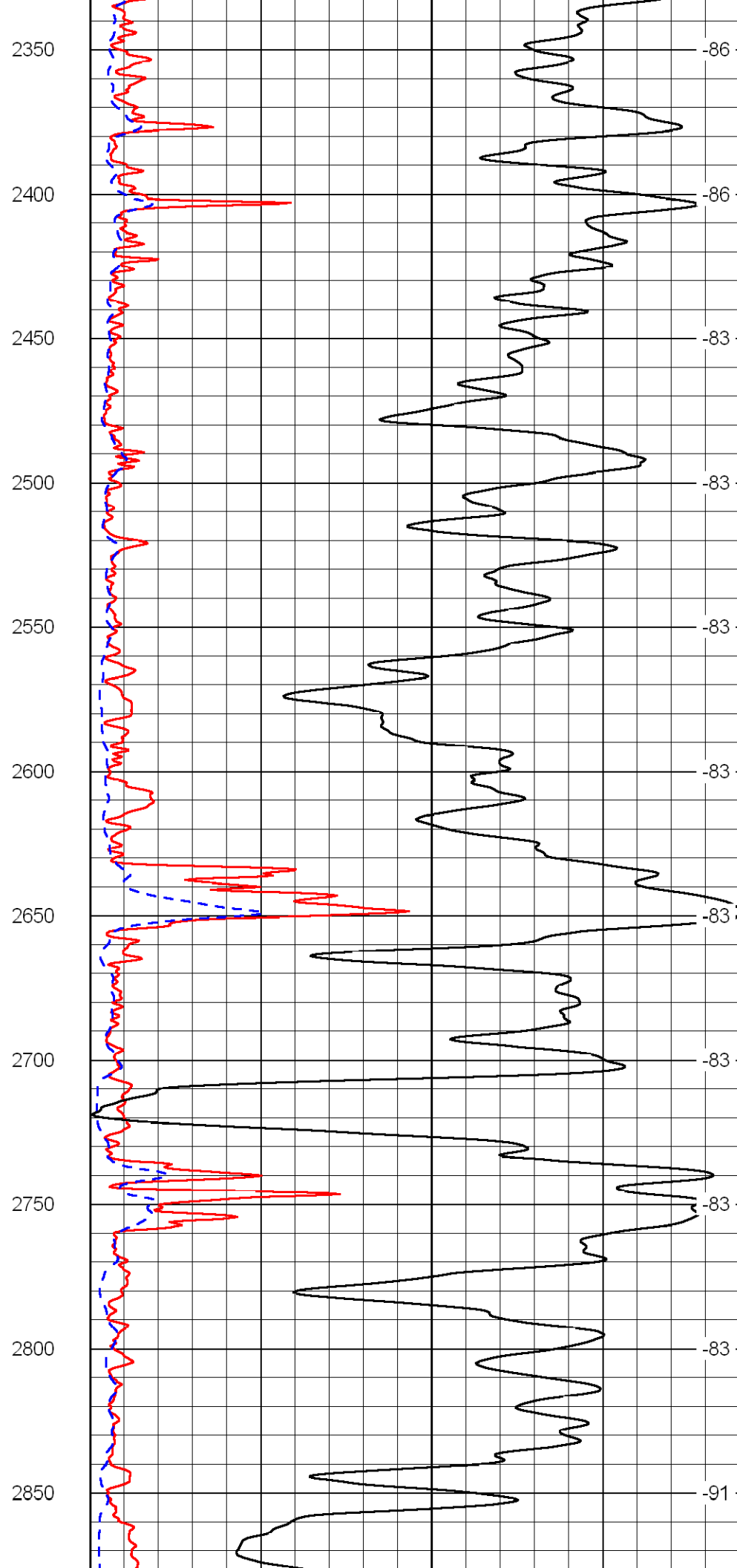
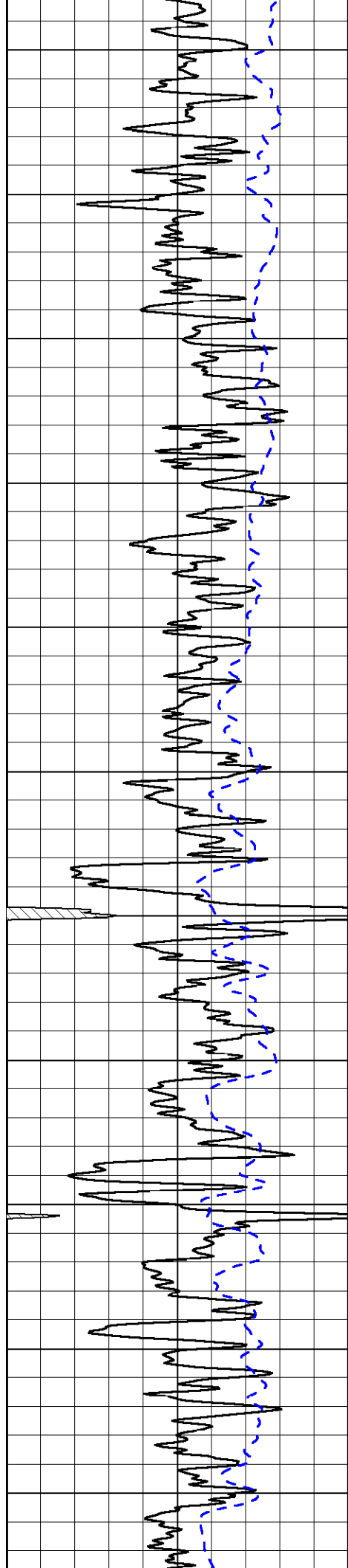
50 Deep Resistivity (Ohm-m) 500

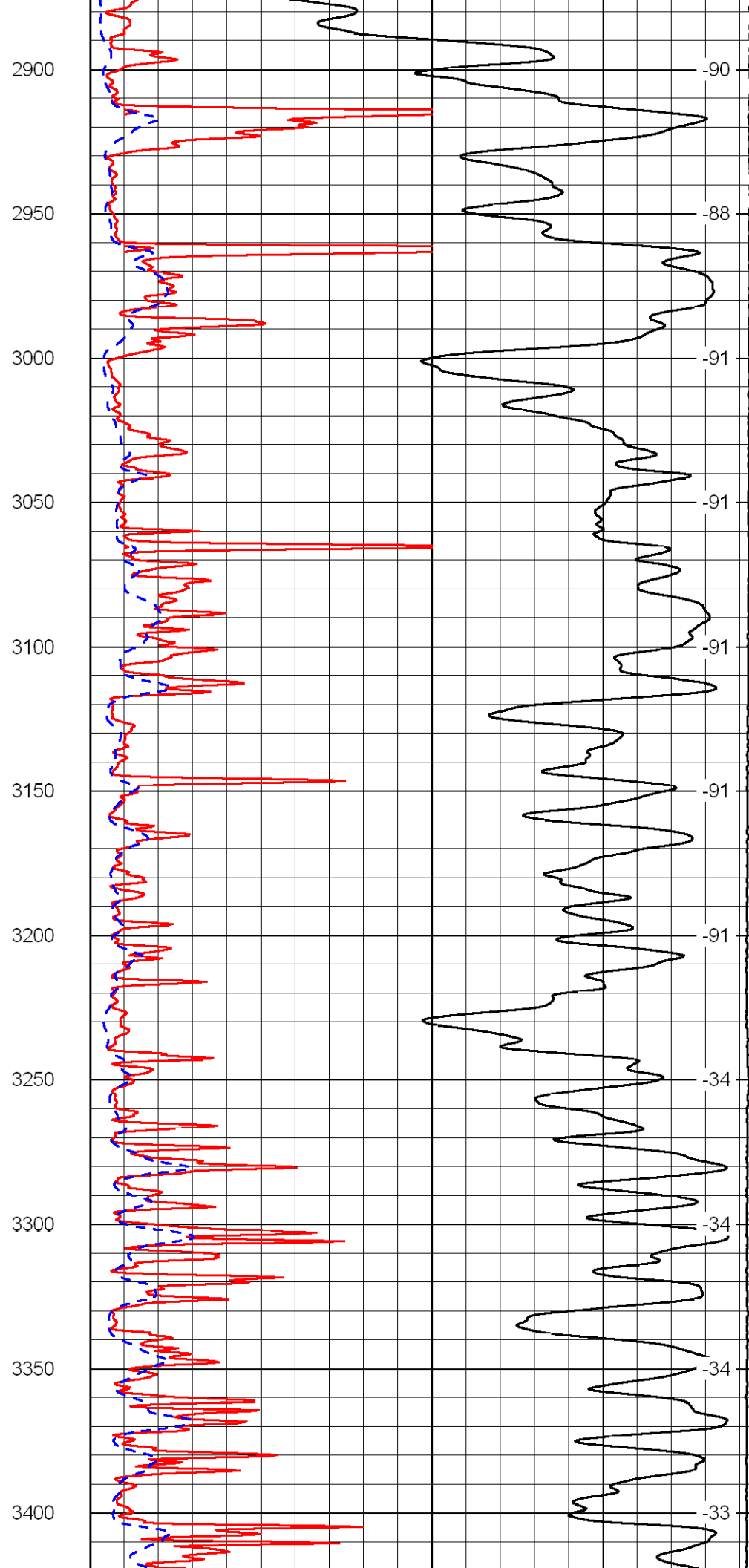
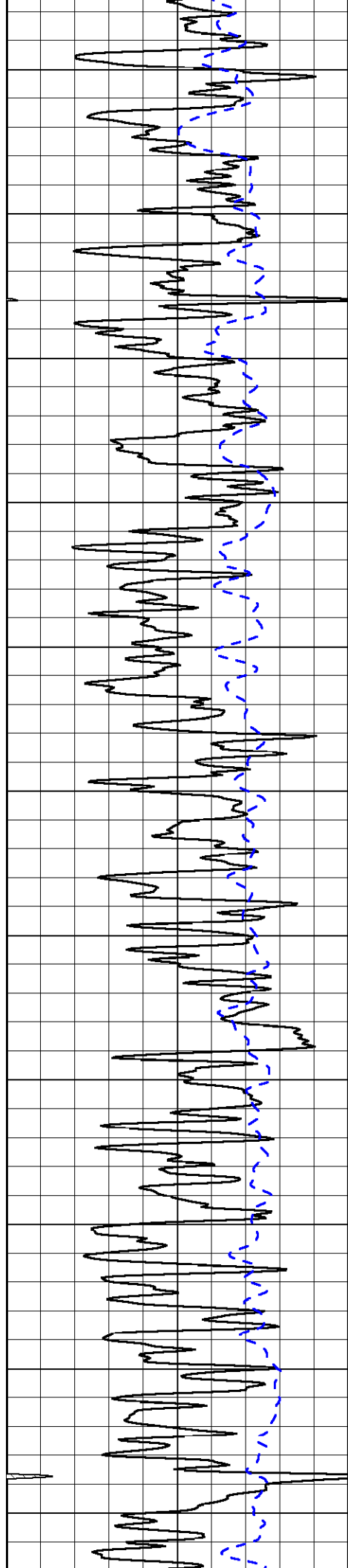


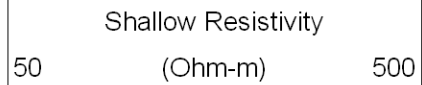
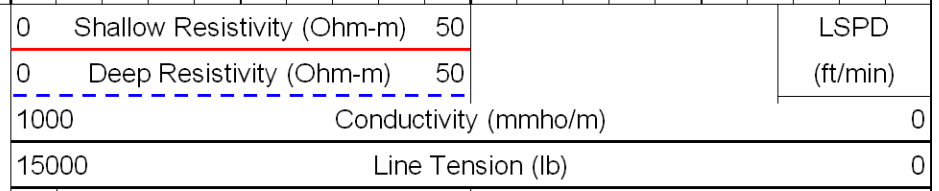
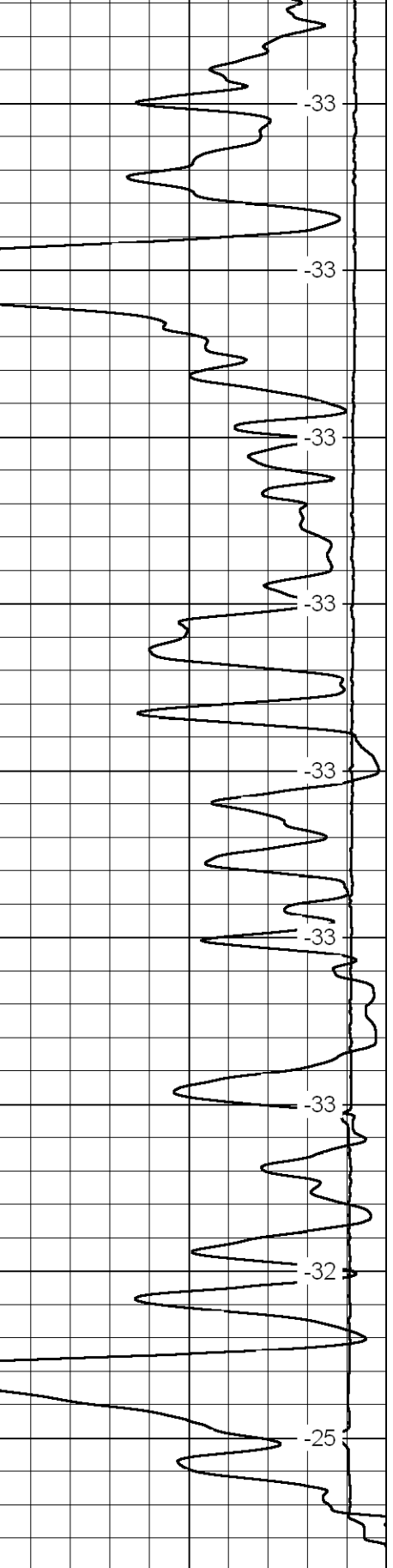
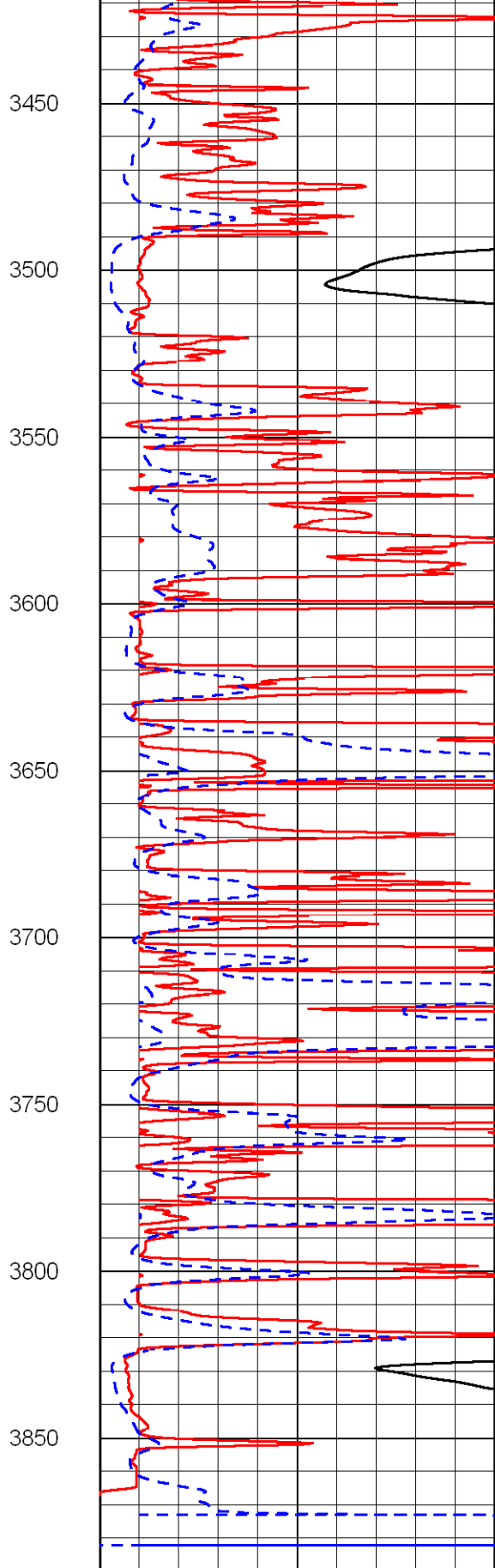
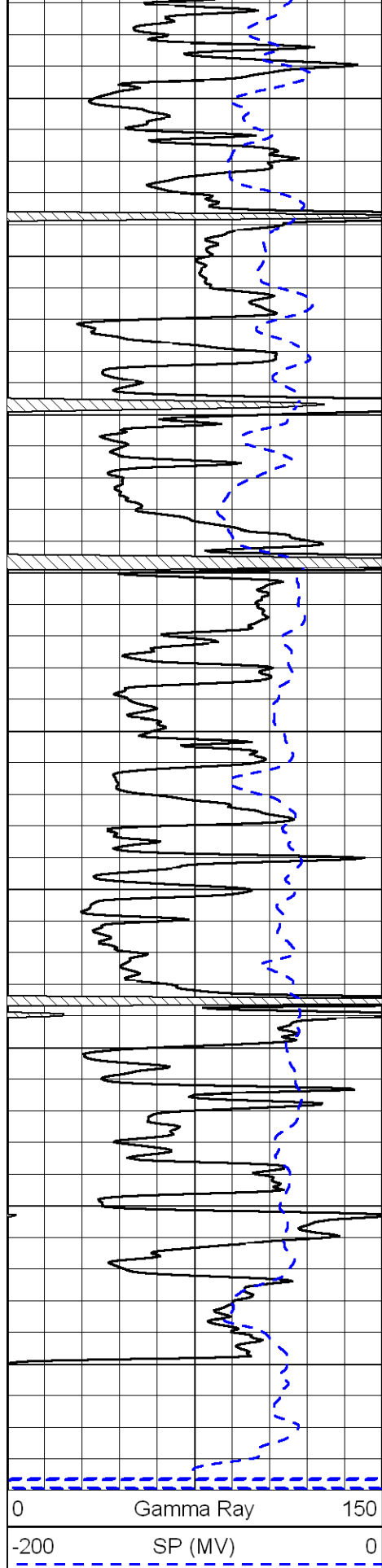












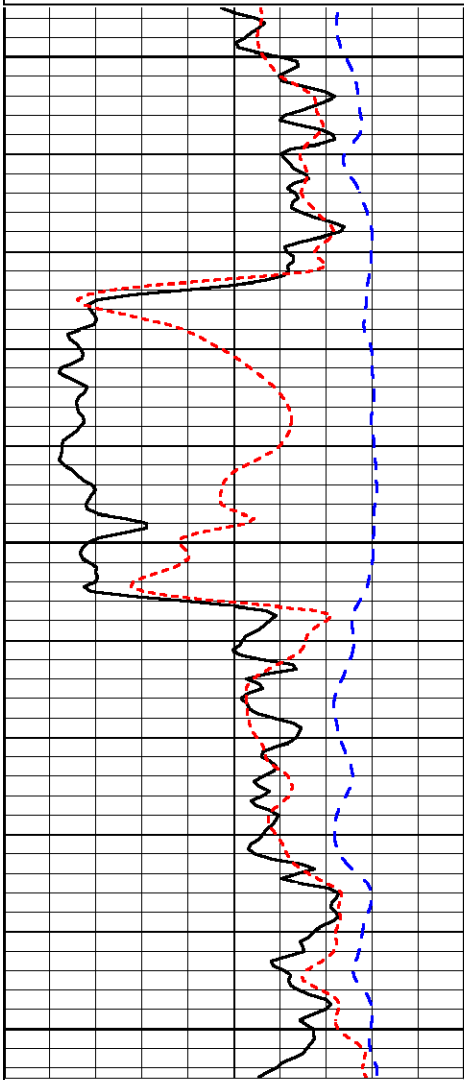
LSPD  
(ft/min)

Database File: c:\warrior\data\h&c\_wyrill no. 6 - 1\hchd.db  
 Dataset Pathname: dil/hc2in  
 Presentation Format: dil  
 Dataset Creation: Thu Jan 07 11:58:27 2010  
 Charted by: Depth in Feet scaled 1:240

0	Gamma Ray	150
-200	SP (MV)	0
-160	Rxo / Rt	40

0.2	Deep Resistivity (Ohm-m)	2000
0.2	Medium Resistivity (Ohm-m)	2000
0.2	Shallow Resistivity (Ohm-m)	2000
15000	Line Tension (lb)	0

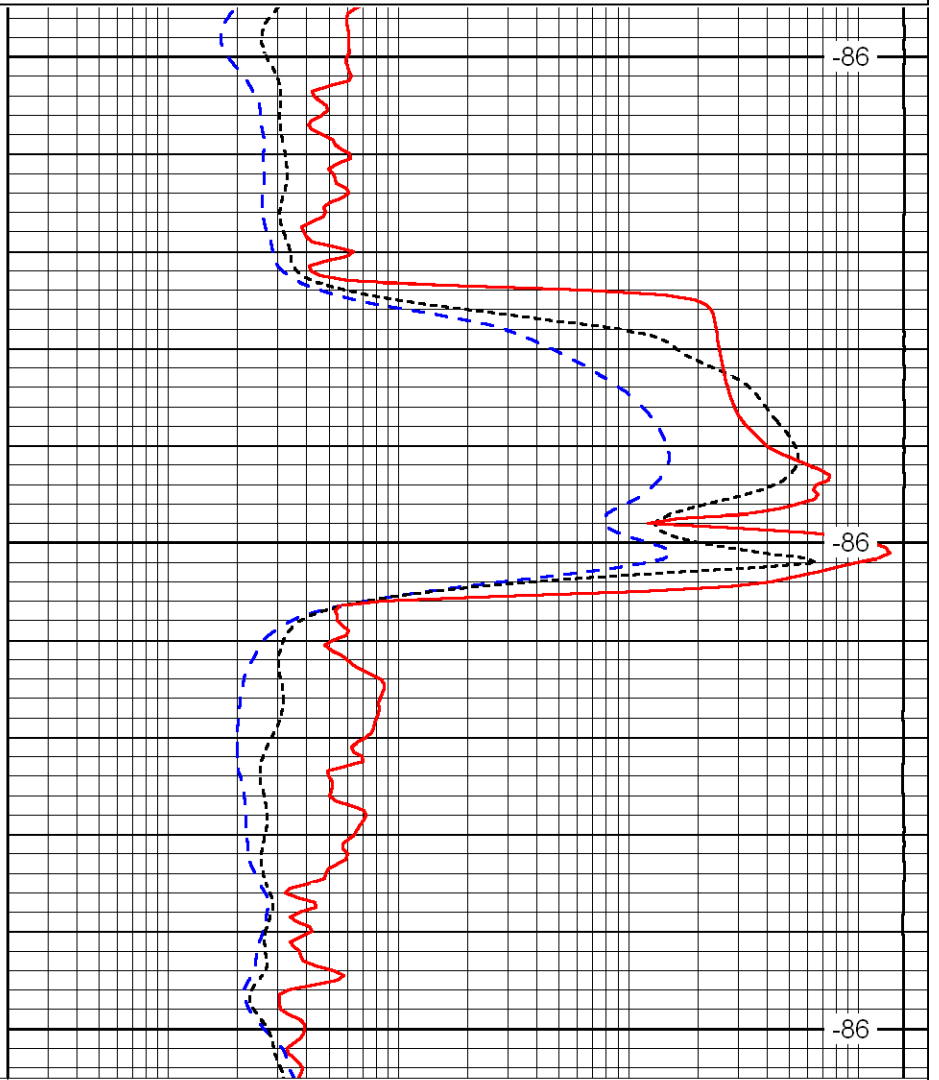
LSPD  
(ft/min)



2050

2100

2150



-86

-86

-86

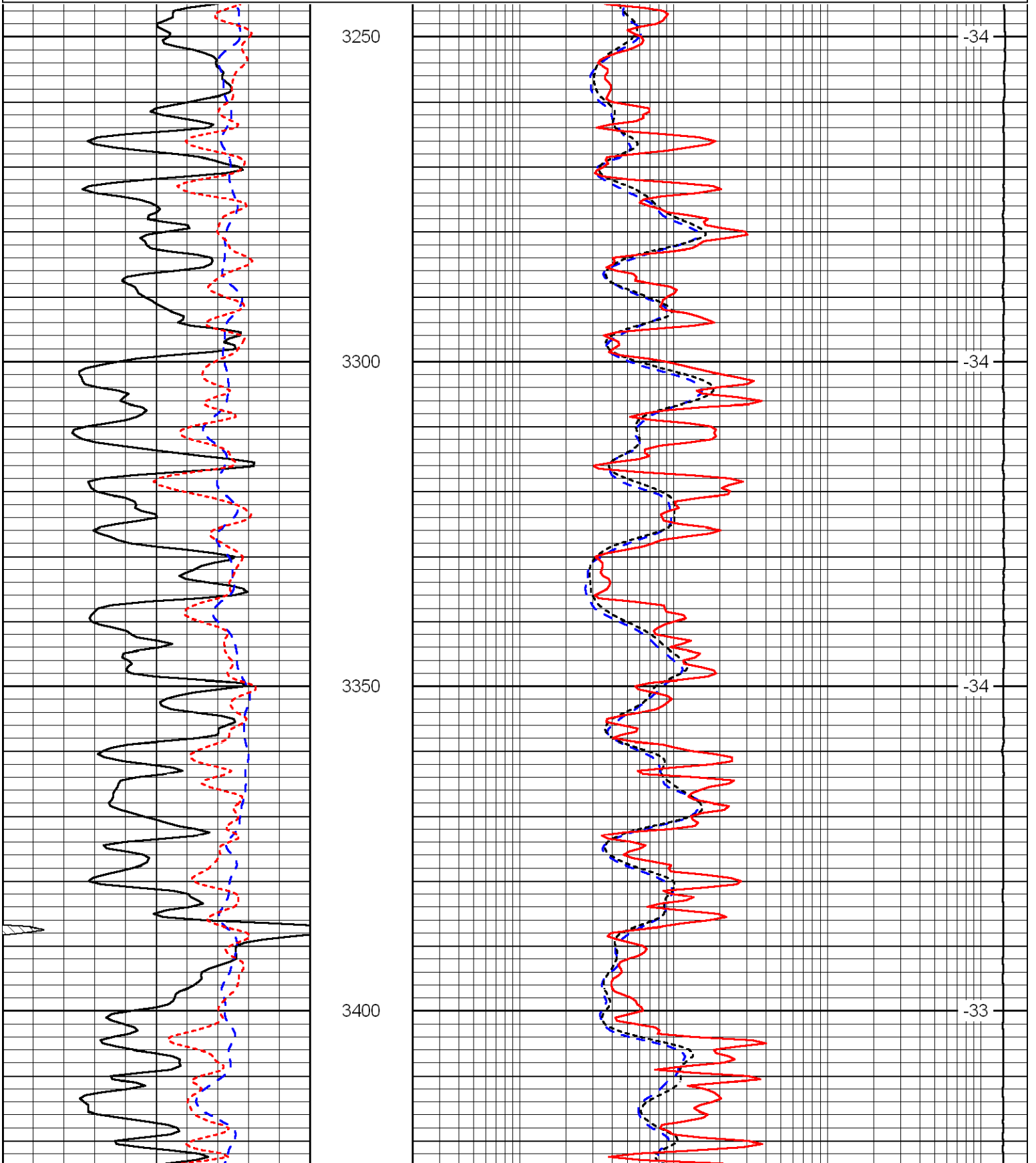
0	Gamma Ray	150
-200	SP (MV)	0
-160	Rxo / Rt	40

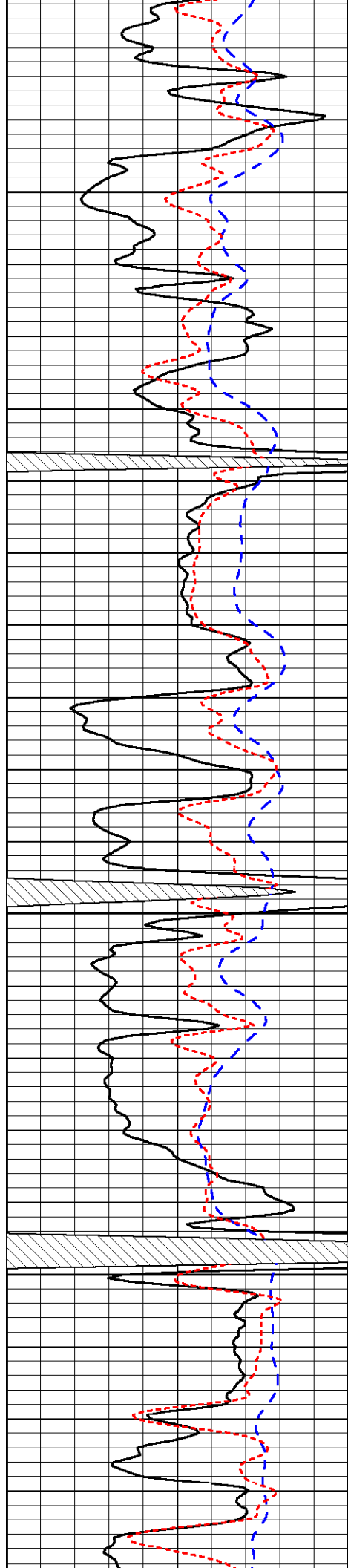
0.2	Deep Resistivity (Ohm-m)	2000
0.2	Medium Resistivity (Ohm-m)	2000
0.2	Shallow Resistivity (Ohm-m)	2000
15000	Line Tension (lb)	0

LSPD  
(ft/min)

Database File: c:\warrior\data\h&c\_wyrill no. 6 - 1\hchd.db  
 Dataset Pathname: dil/hc2in  
 Presentation Format: dil

0	Gamma Ray	150	0.2	Deep Resistivity (Ohm-m)	2000
-200	SP (MV)	0	0.2	Medium Resistivity (Ohm-m)	2000
-160	Rxo / Rt	40	0.2	Shallow Resistivity (Ohm-m)	2000
			15000	Line Tension (lb)	0
					LSPD (ft/min)



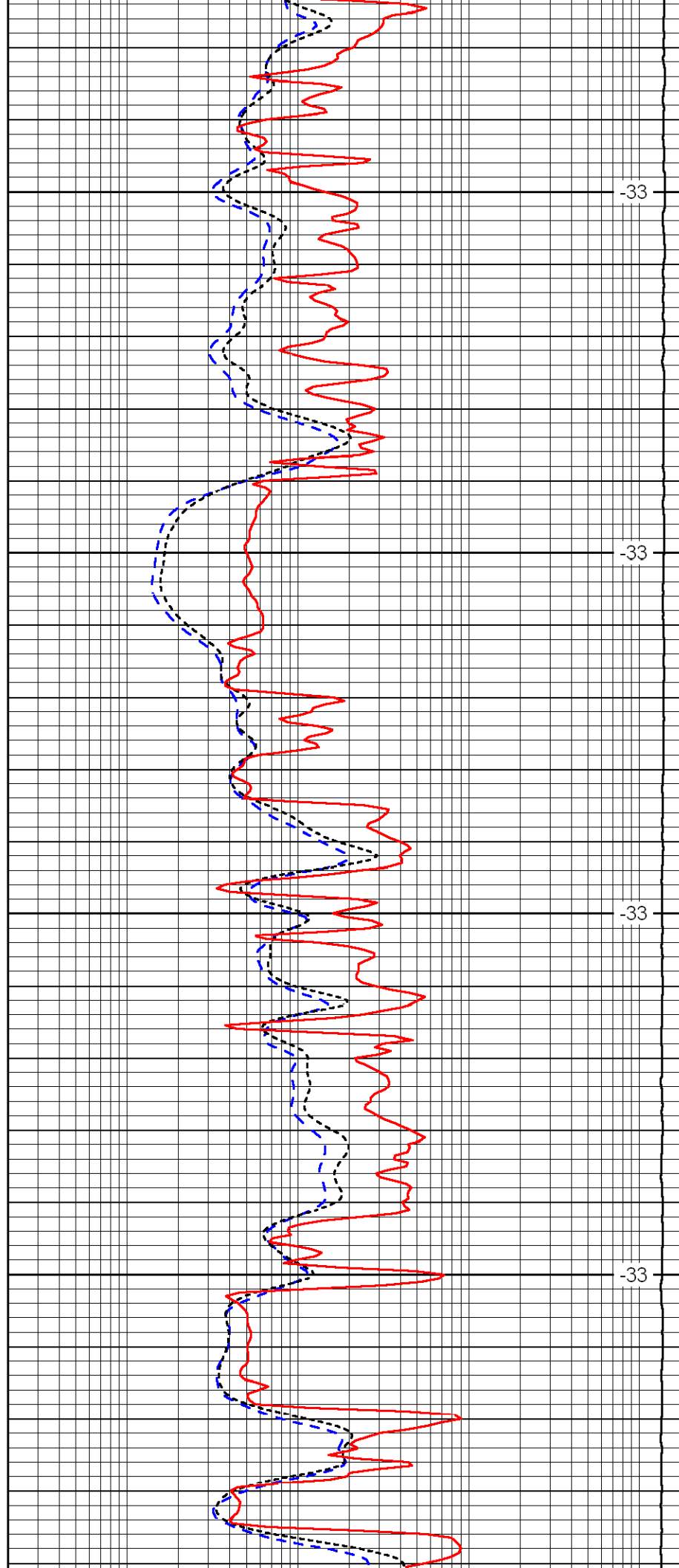


3450

3500

3550

3600

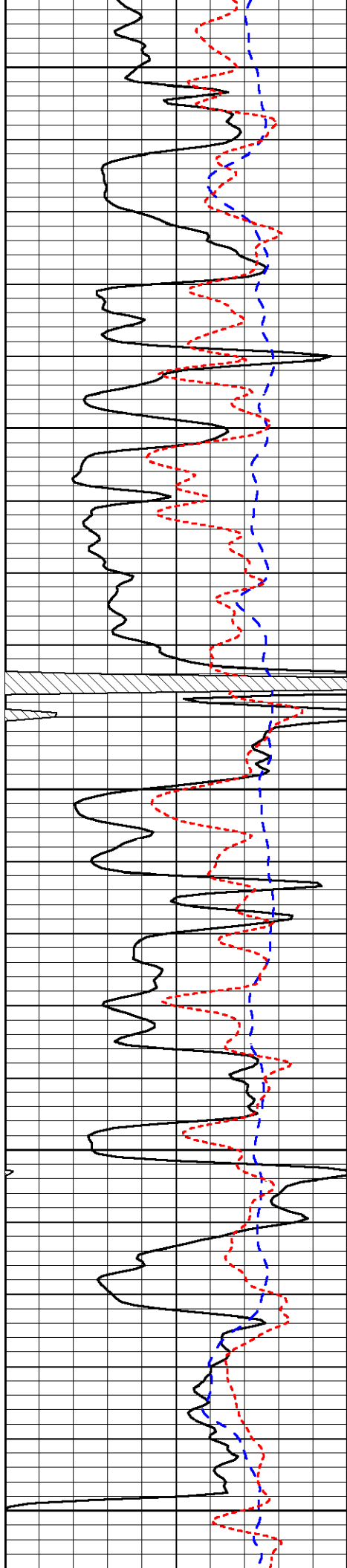


-33

-33

-33

-33



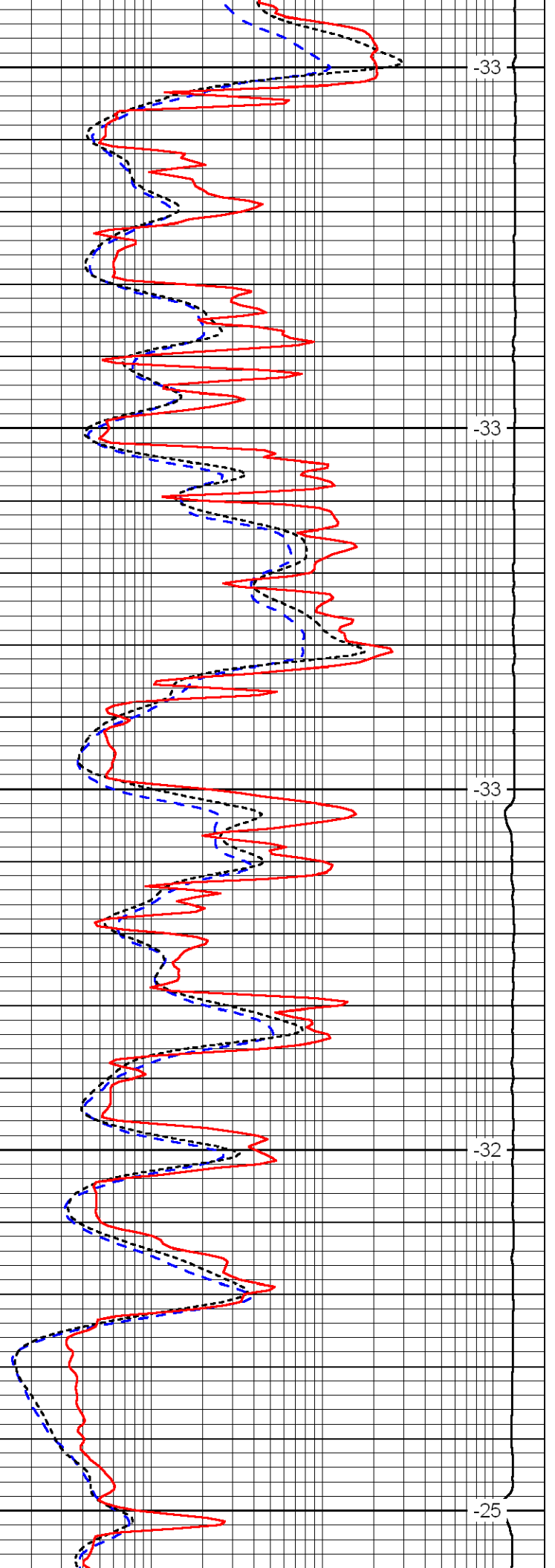
3650

3700

3750

3800

3850



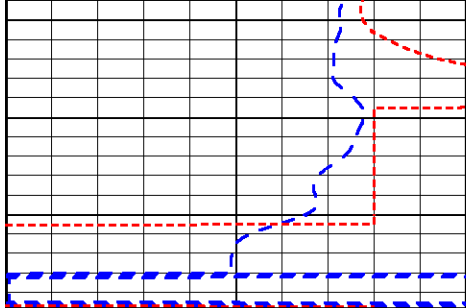
-33

-33

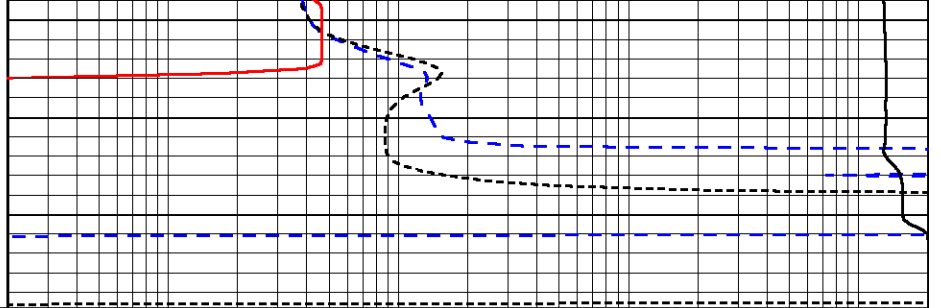
-33

-32

-25



0	Gamma Ray	150
-200	SP (MV)	0
-160	Rxo / Rt	40



0.2	Deep Resistivity (Ohm-m)	2000
0.2	Medium Resistivity (Ohm-m)	2000
0.2	Shallow Resistivity (Ohm-m)	2000
15000	Line Tension (lb)	0

LSPD (ft/min)
------------------