



**SUPERIOR**  
Hays,  
Kansas

**SONIC**  
LOG

Company	VINCENT OIL CORPORATION	Location:	API # : 15-095-22198-00-00	Other Services CDL/CNL DIL/MEL
Well	WILSON # 1-14	1650' FSL @ 1650' FWL SW-NE-SW		Elevation
Field	WILDCAT	SEC 14 TWP 28 RGE 8W		K.B. 1619 D.F. 1617 G.L. 1609
County	KINGMAN	GROUND LEVEL	Elevation	1609
State	KANSAS	Log Measured From	KELLY BUSHING 10 A.G.L.	
		Drilling Measured From	KELLY BUSHING	

Date	12-08-09
Run Number	TWO
Depth Driller	4185
Depth Logger	4176
Bottom Logged Interval	4166
Top Log Interval	1300
Casing Driller	8 5/8" @ 266
Casing Logger	266
Bit Size	7 7/8
Type Fluid In Hole	CHEMICAL MUD
Density / Viscosity	8.9/46
pH / Fluid Loss	9.2/9.5
Source of Sample	FLOWLINE
Rm @ Meas. Temp	.9 @ 22F
Rmf @ Meas. Temp	.675 @ 22F
Rmc @ Meas. Temp	1.44 @ 22F
Source of Rmf / Rmc	MEASUREMENT
Rm @ BHT	.169 @ 117F
Time Circulation Stopped	2 HOURS
Time Logger on Bottom	
Maximum Recorded Temperature	117F
Equipment Number	680
Location	HAYS, KANSAS
Recorded By	JASON CAPPELLUCCI
Witnessed By	M.L. KORPHAGE
	JEFF GRONWEG

<<< Fold Here >>>

All interpretations are opinions based on inferences from electrical or other measurements and we cannot and do not guarantee the accuracy or correctness of any interpretation, and we shall not, except in the case of gross or willful negligence on our part, be liable or responsible for any loss, costs, damages, or expenses incurred or sustained by anyone resulting from any interpretation made by any of our officers, agents or employees. These interpretations are also subject to our general terms and conditions set out in our current Price Schedule.

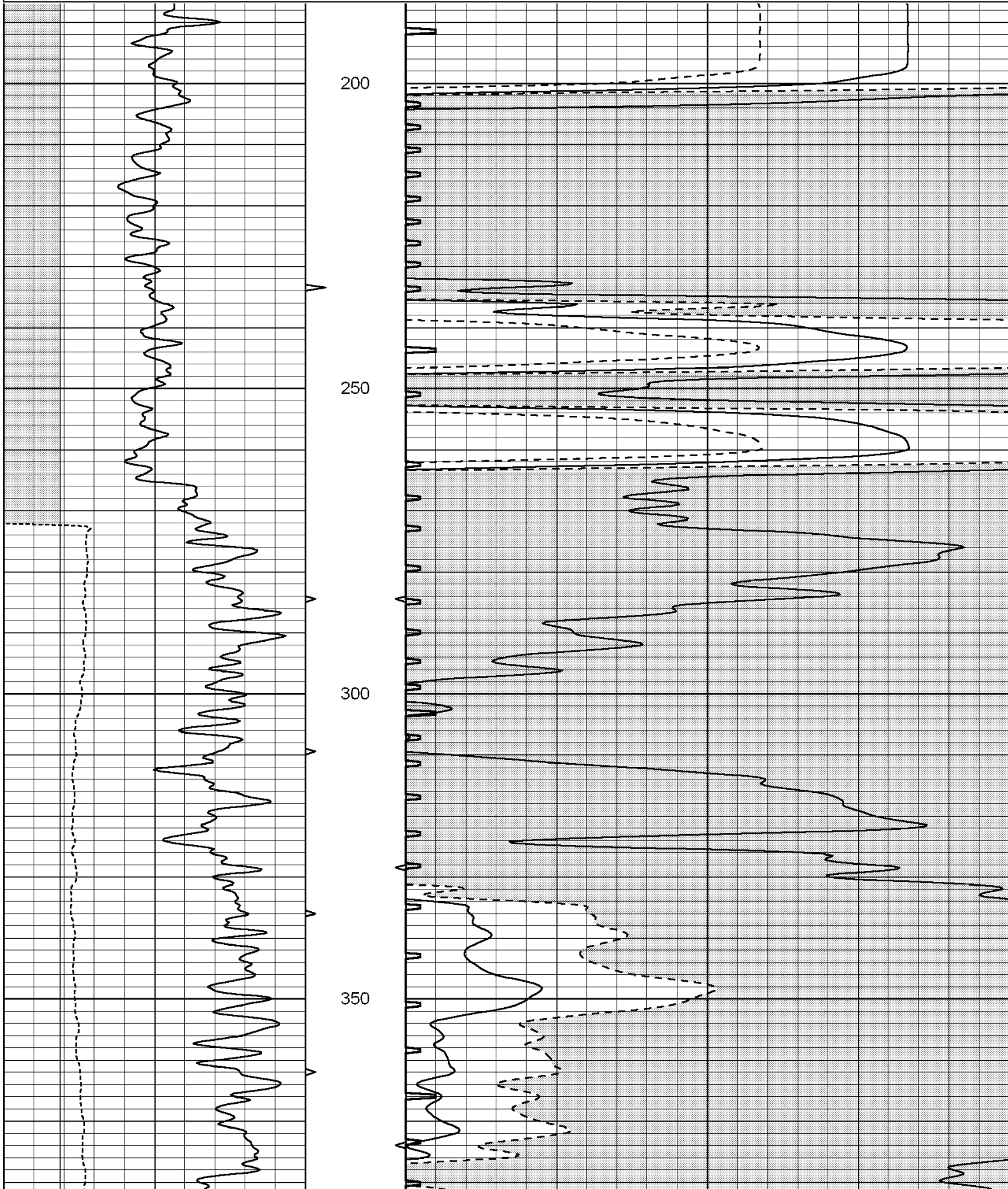
**Comments**

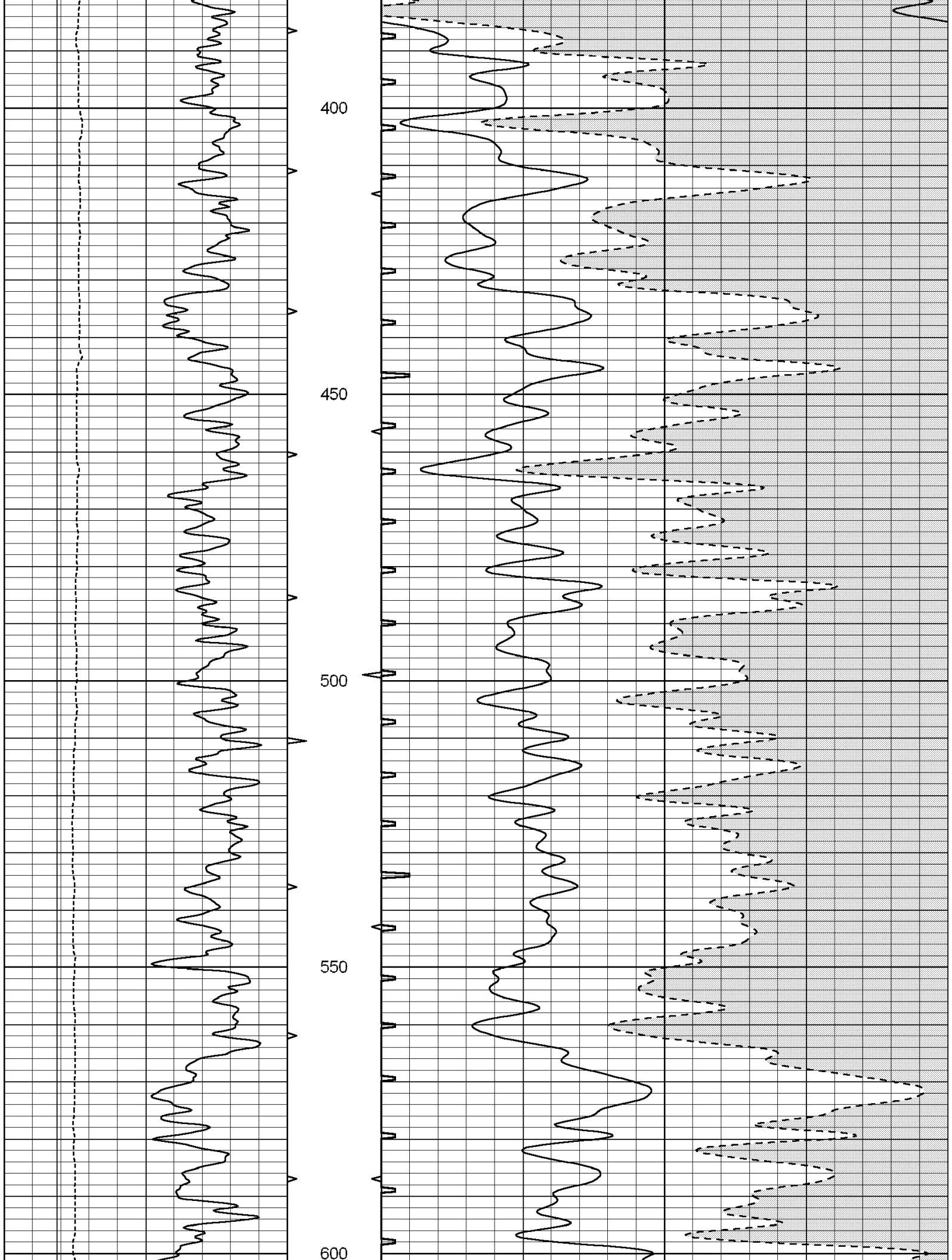
THANK YOU FOR USING SUPERIOR WELL SERVICES HAYS, KANSAS (785) 628-6395  
DIRECTIONS  
KINGMAN KS., 2 S ON HWY 14 - 2.5W - S INTO

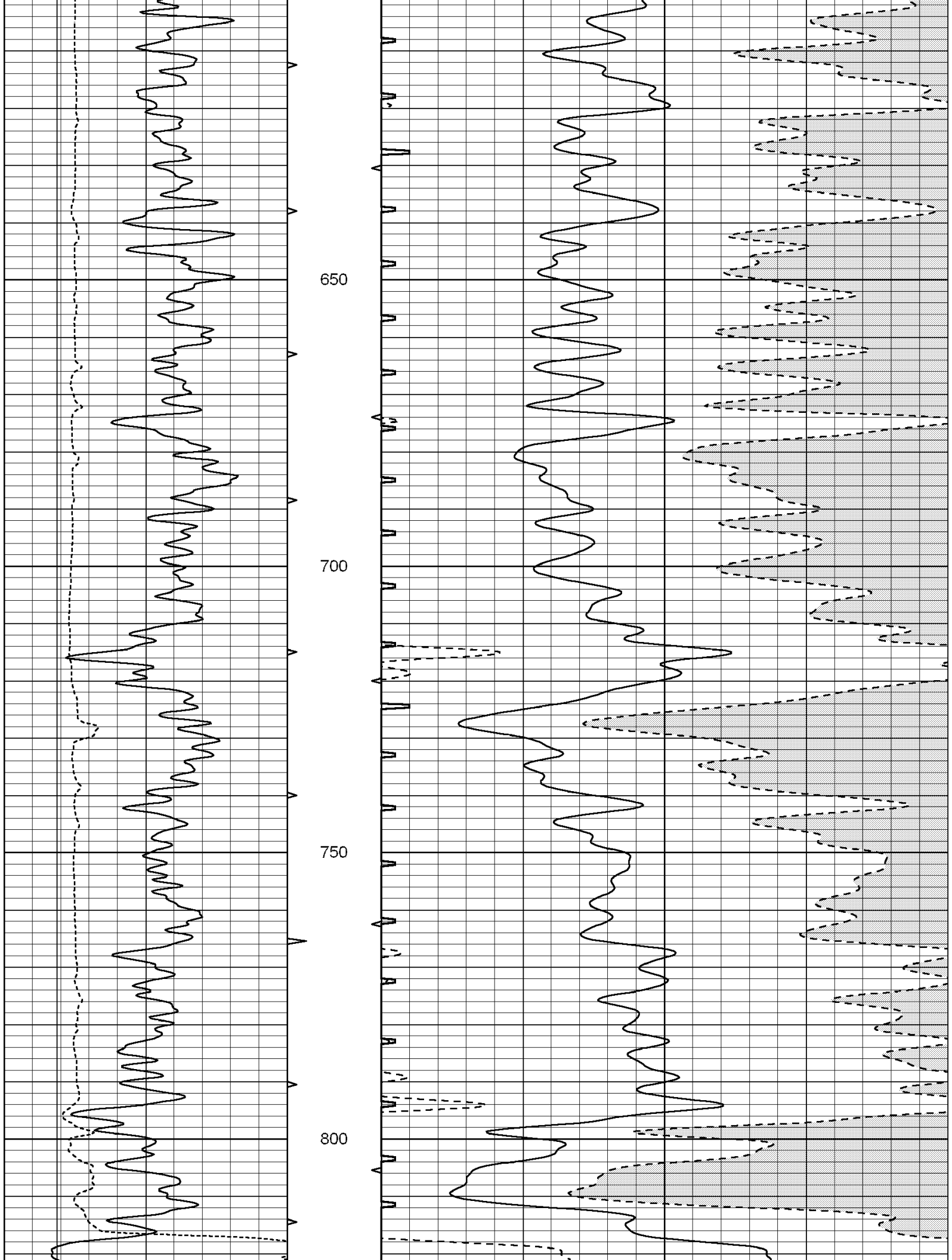
Charted by:

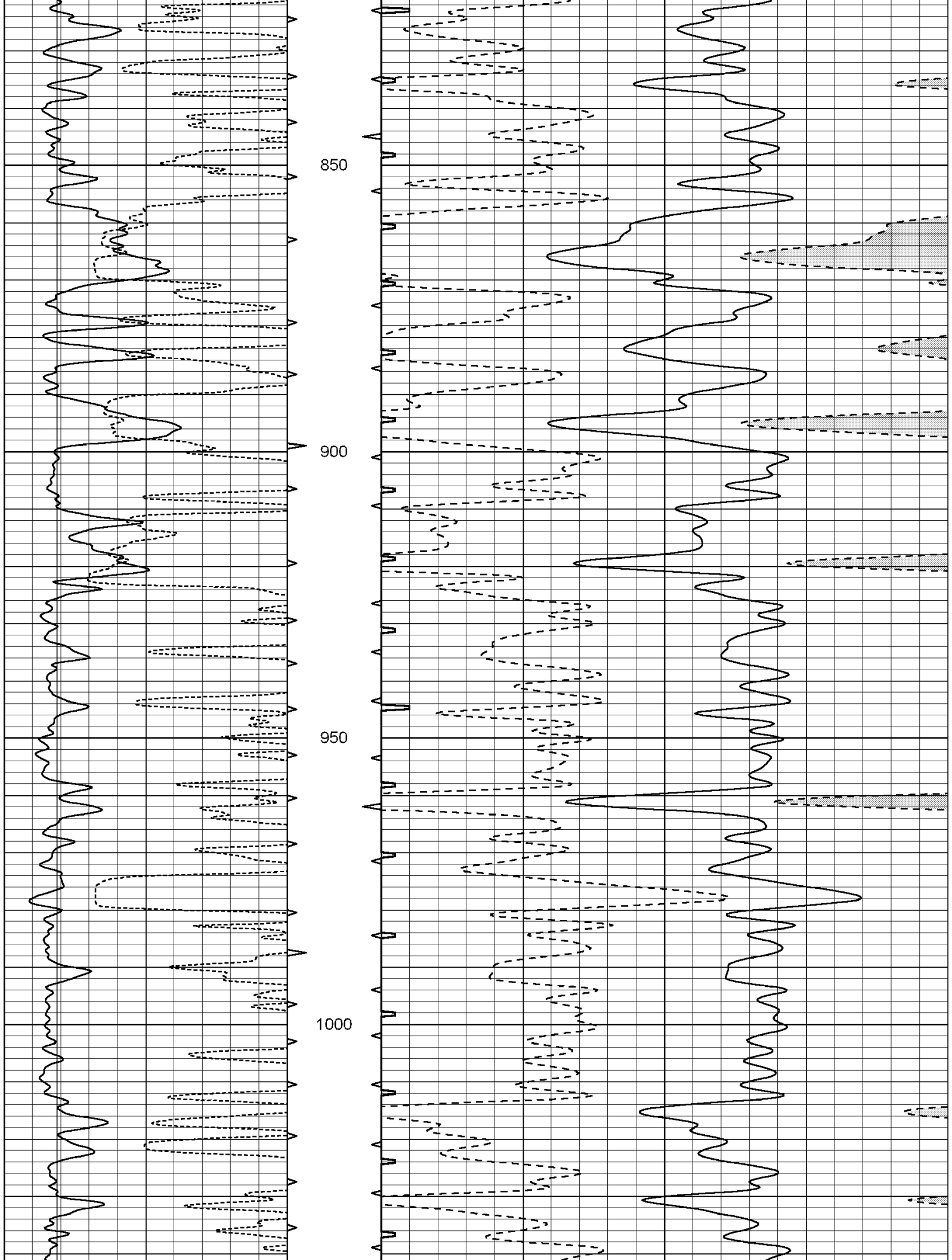
Depth in Feet scaled 1:240

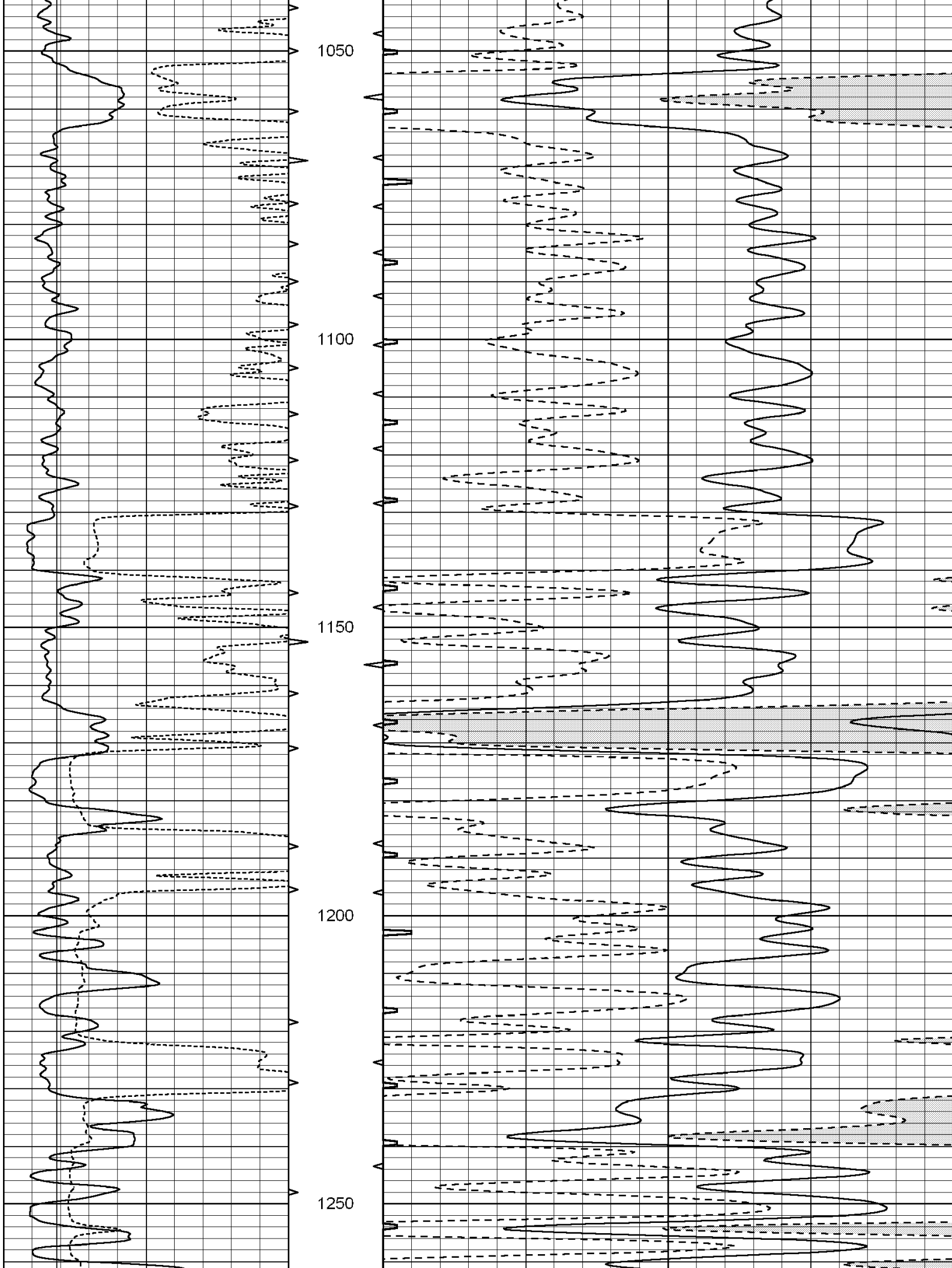
0	GAMMA RAY (GAPI)	150	ABHV	140	DELTA TIME (usec/ft)	40
6	CALIPER (in)	16	10 (ft3) 0	30	SONIC POROSITY (pu)	-10
			TBHV	0	ITT (msec)	20
			0 (ft3) 10			

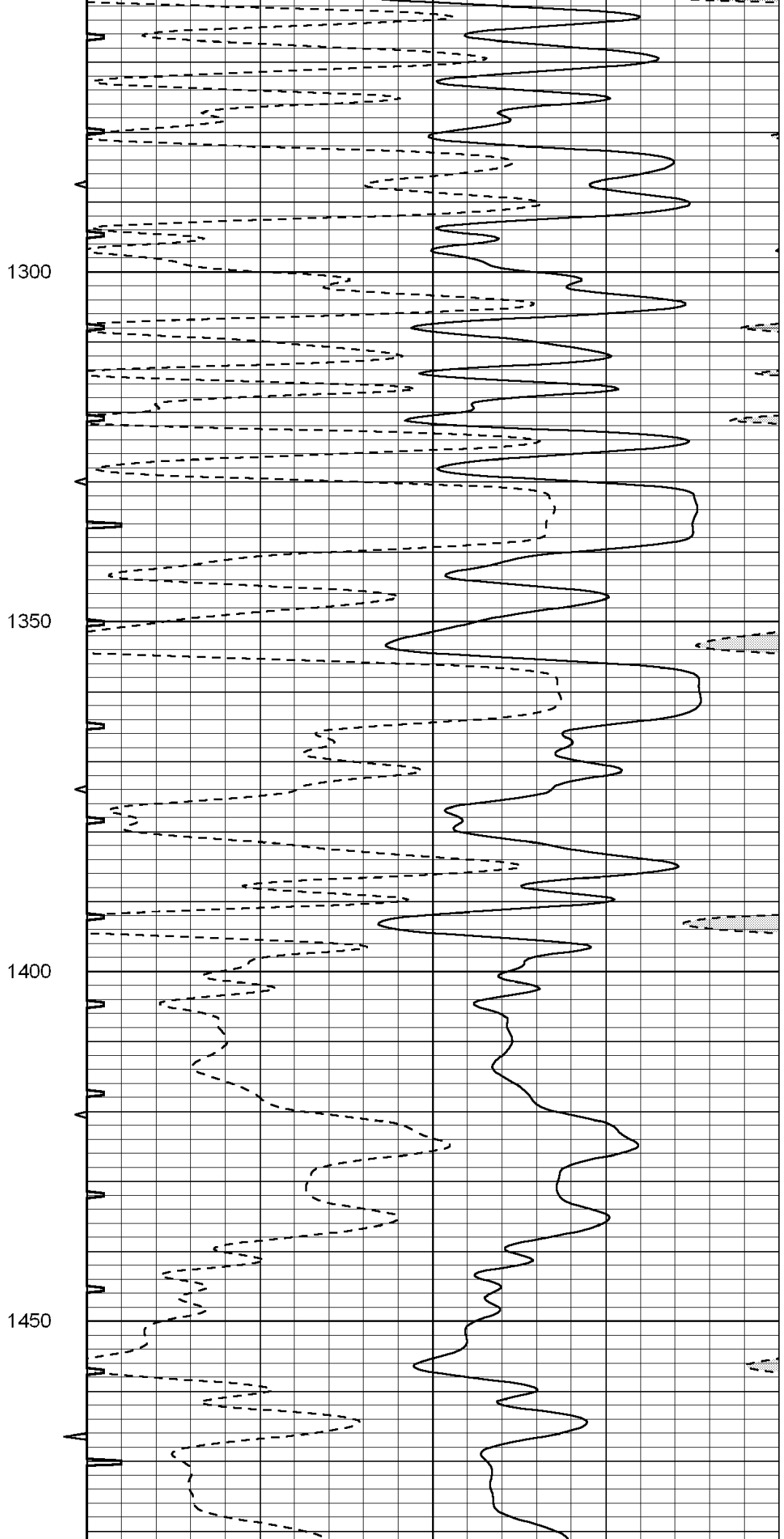
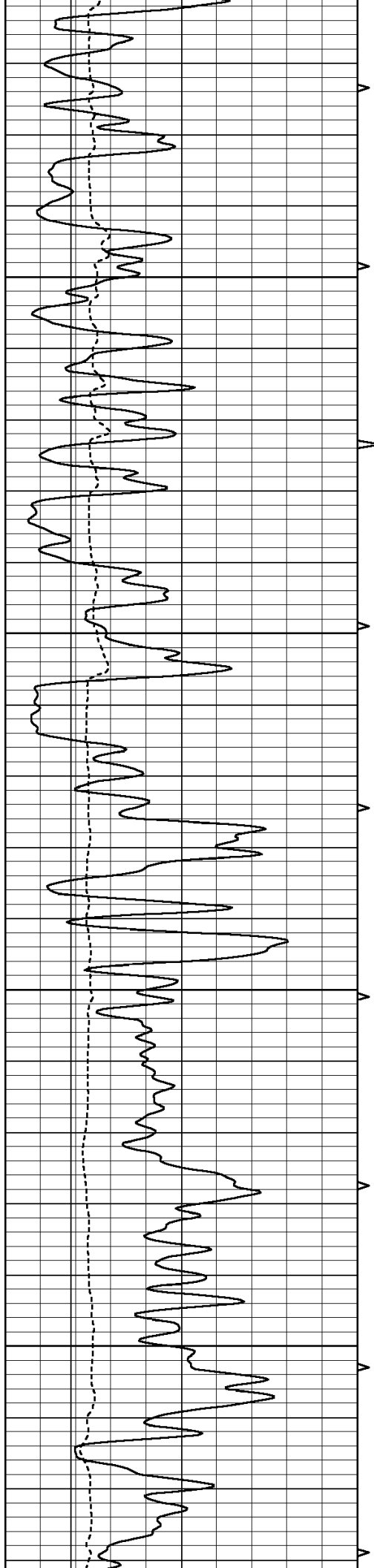


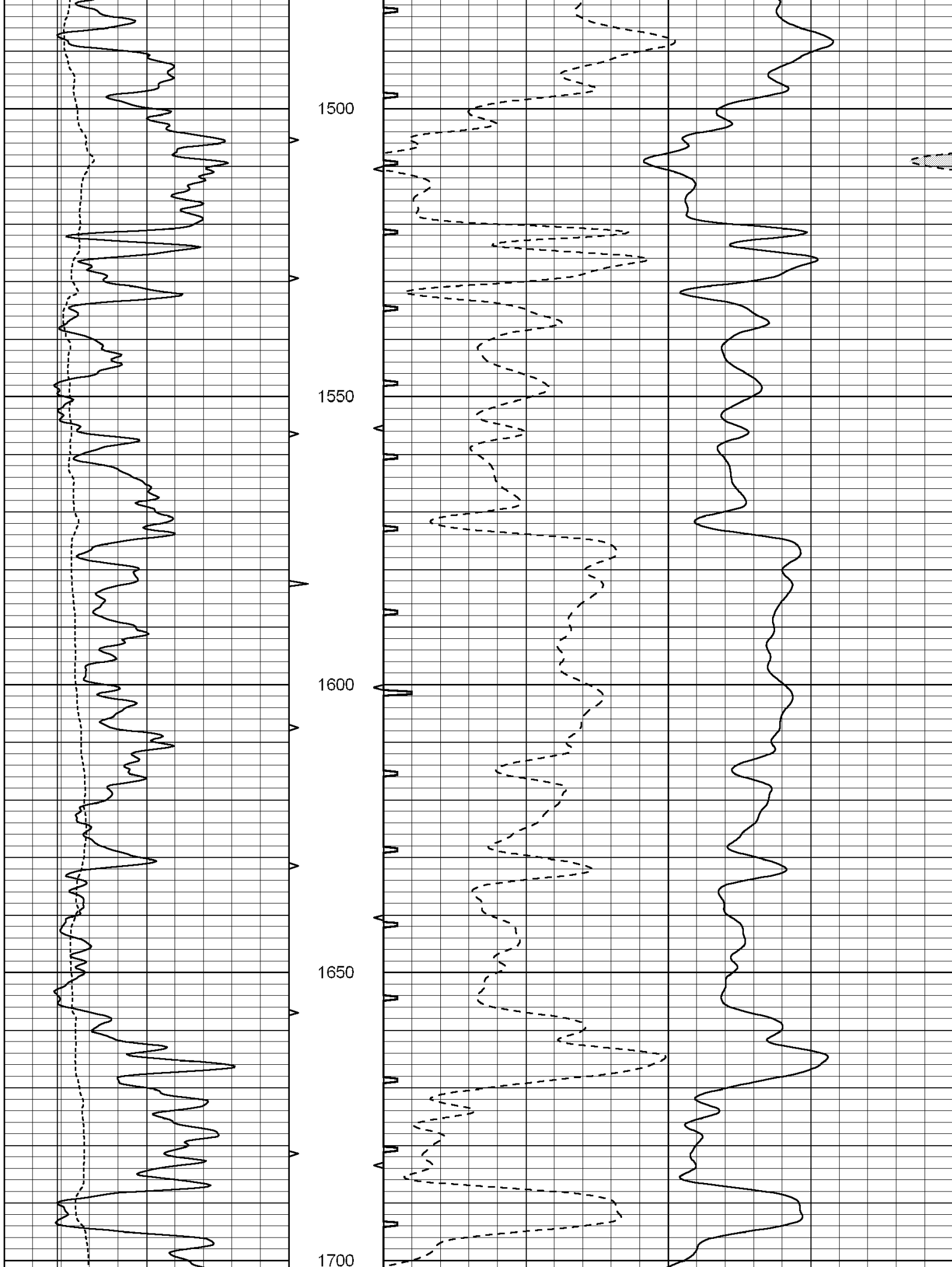


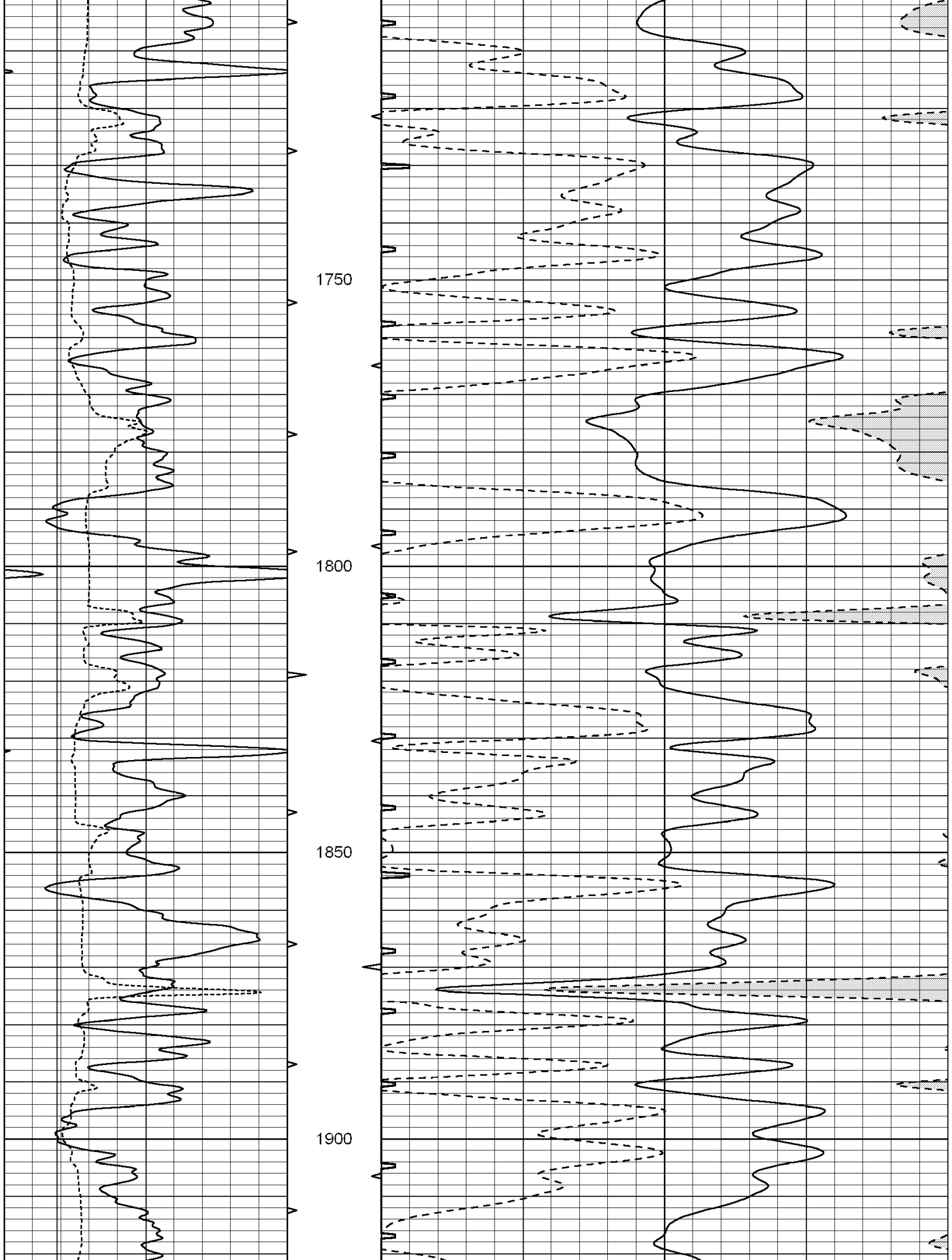


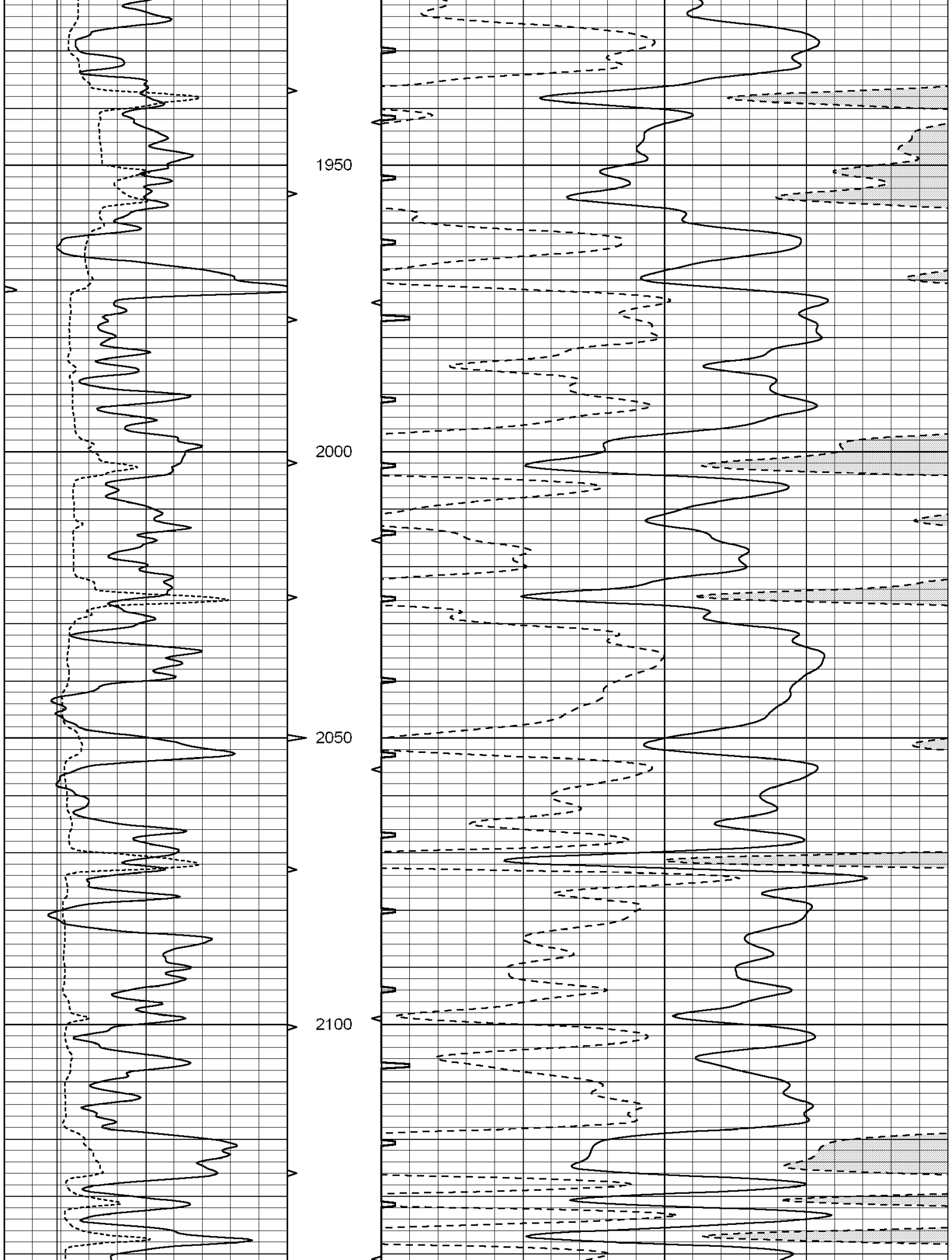


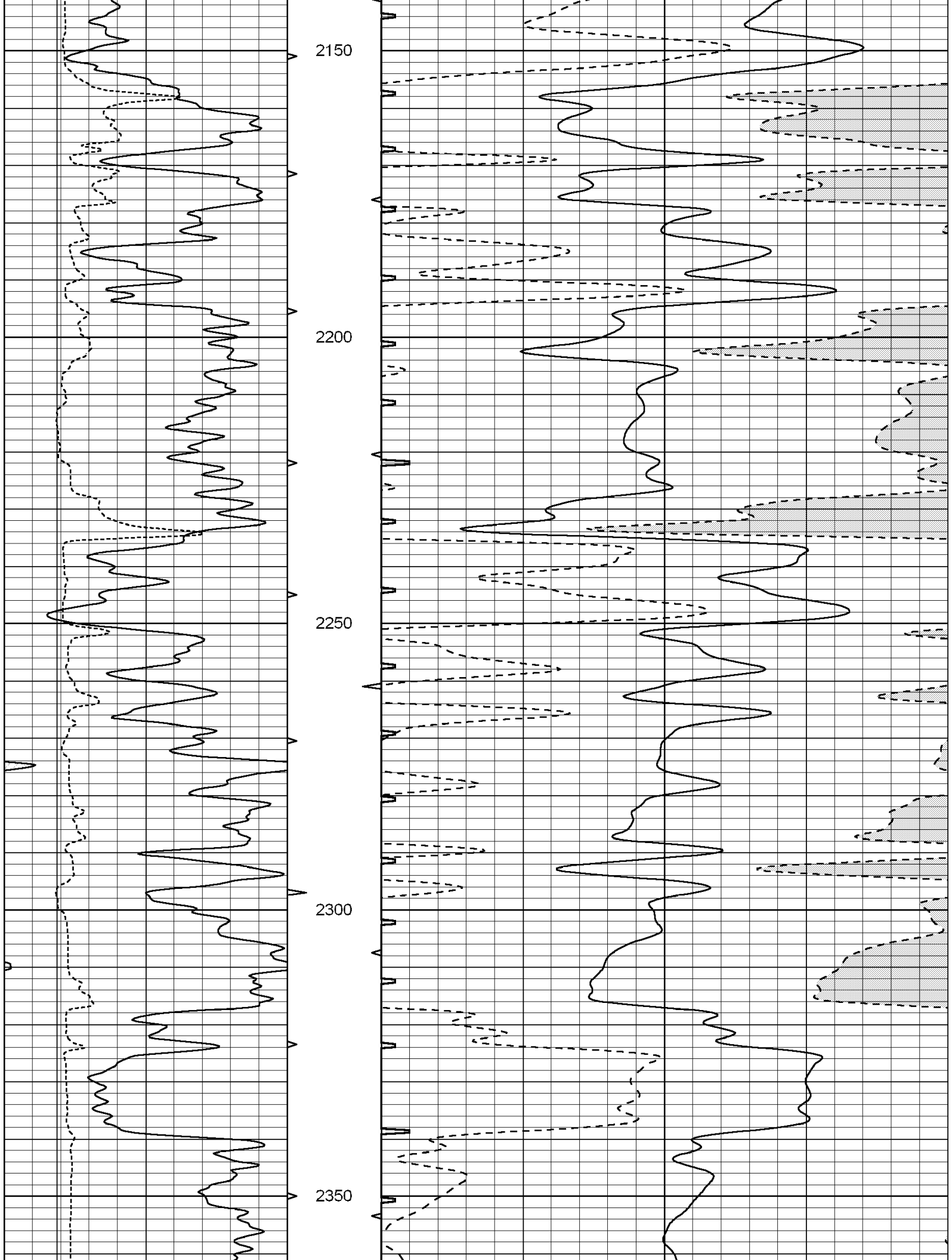


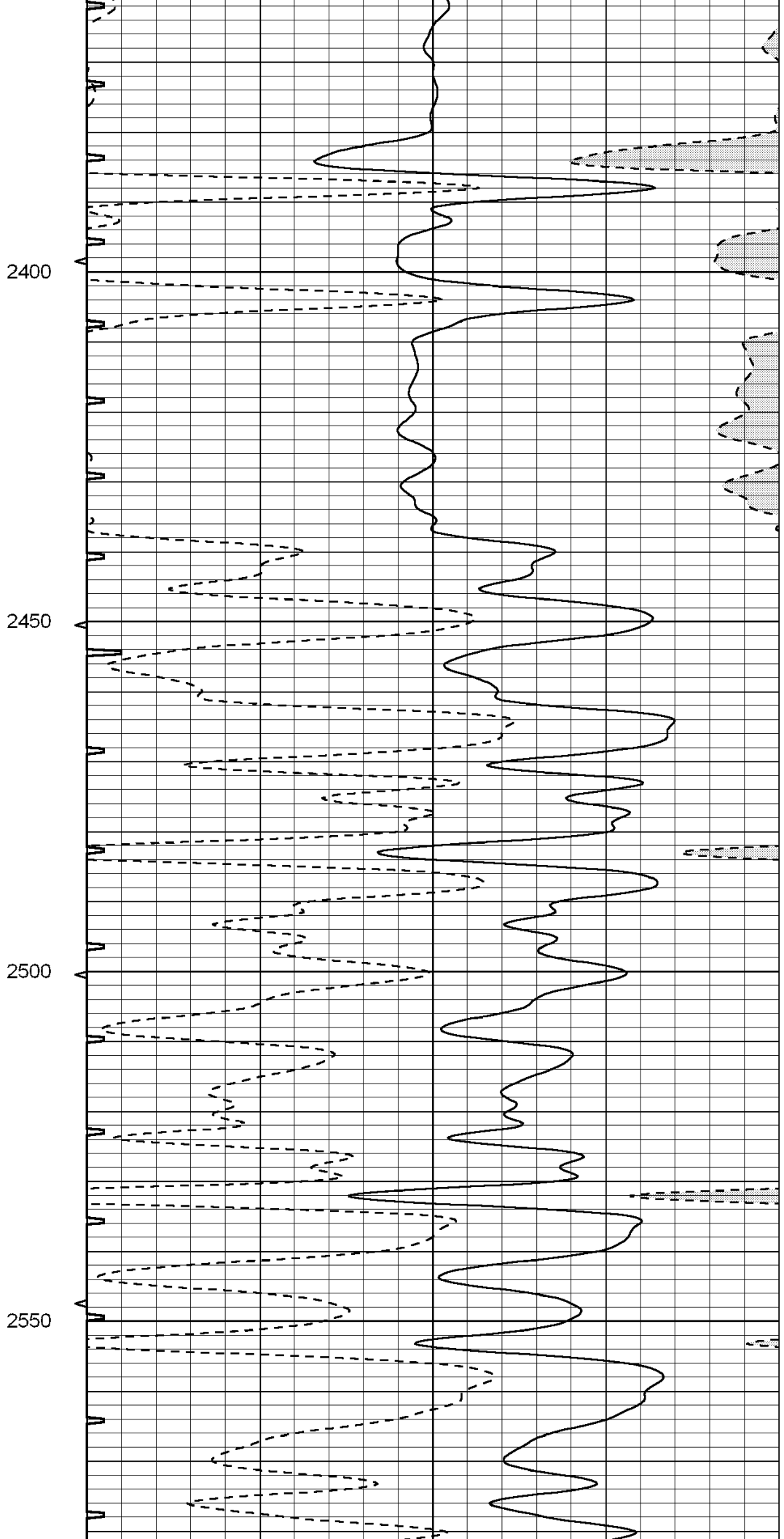
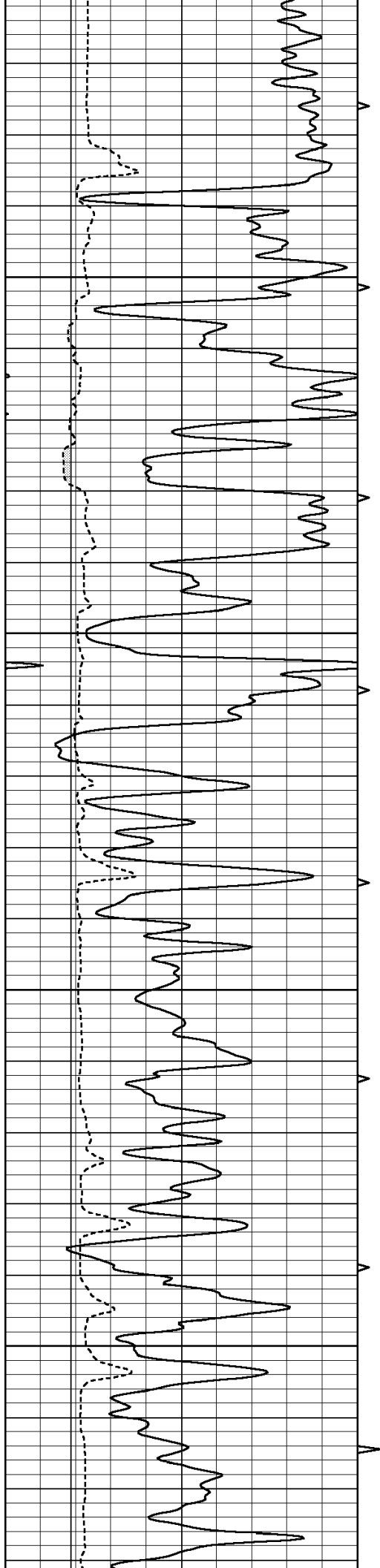


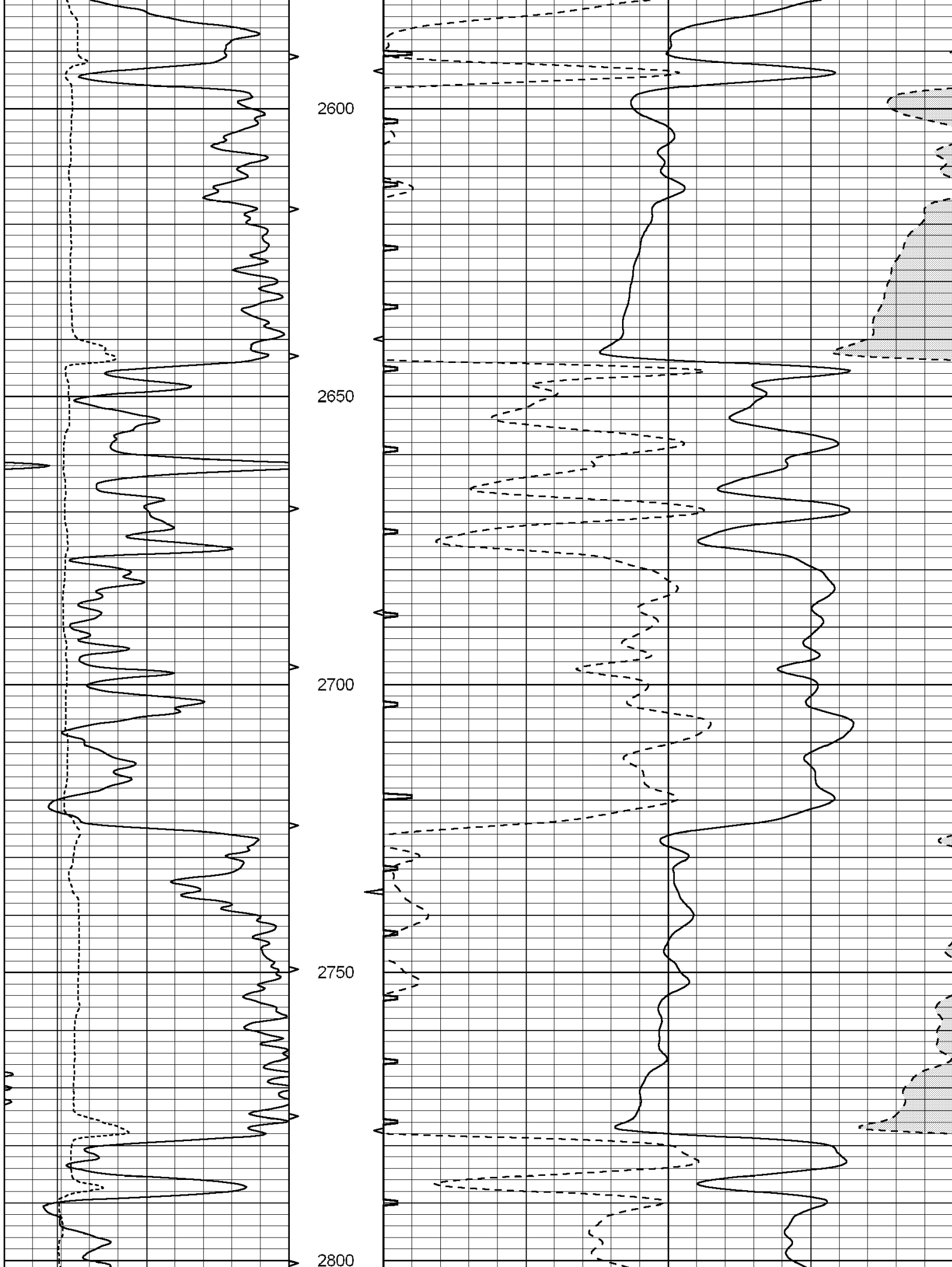


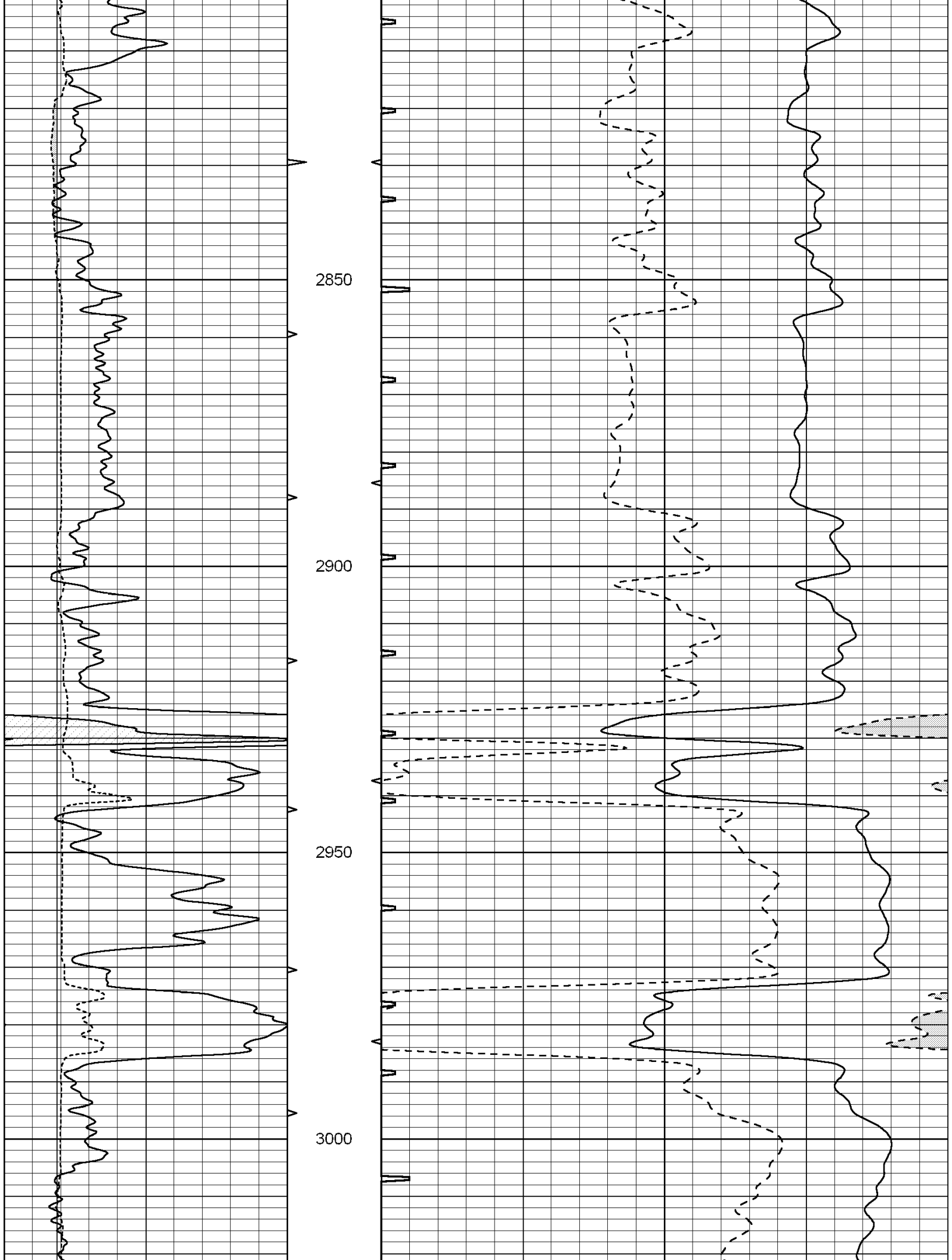


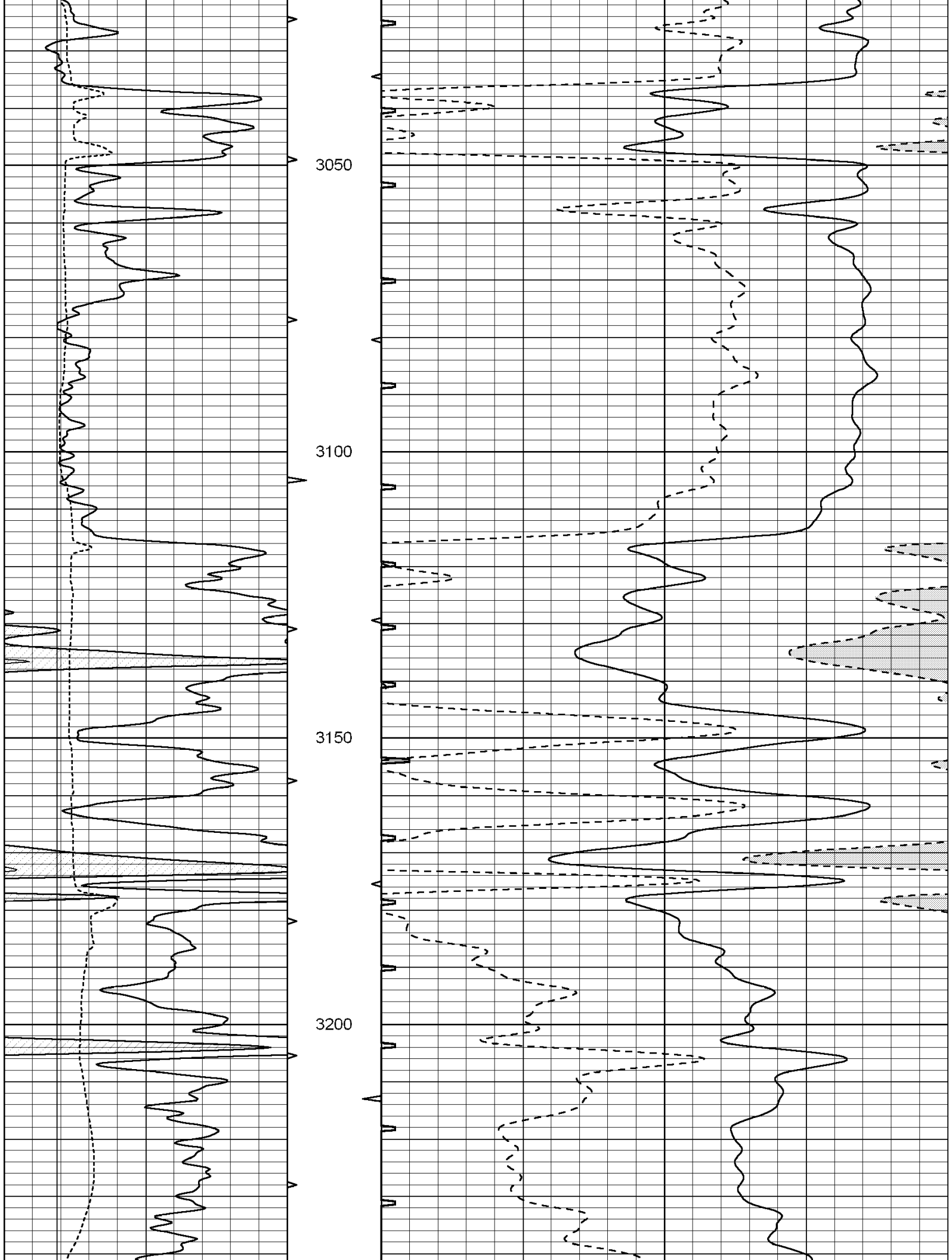


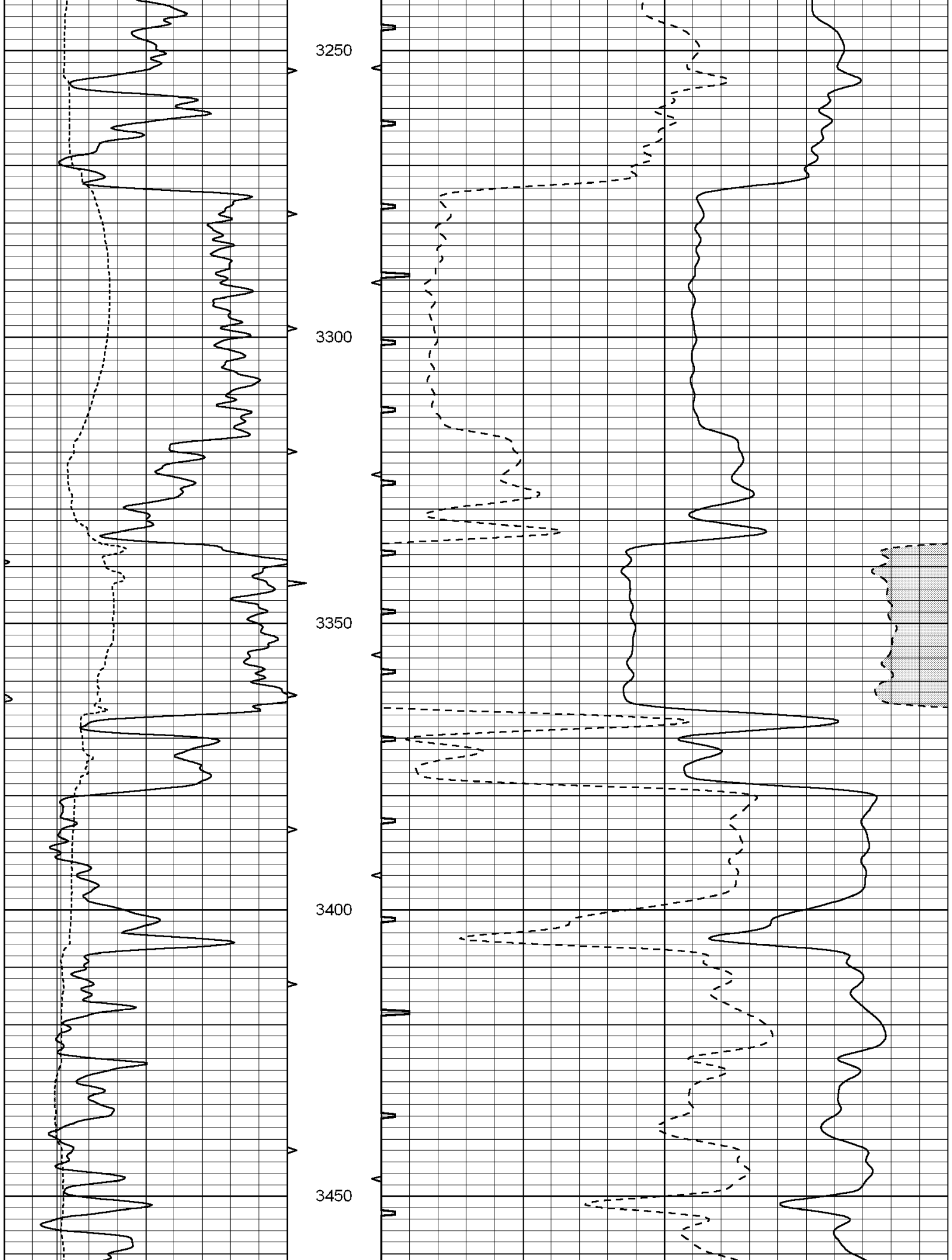


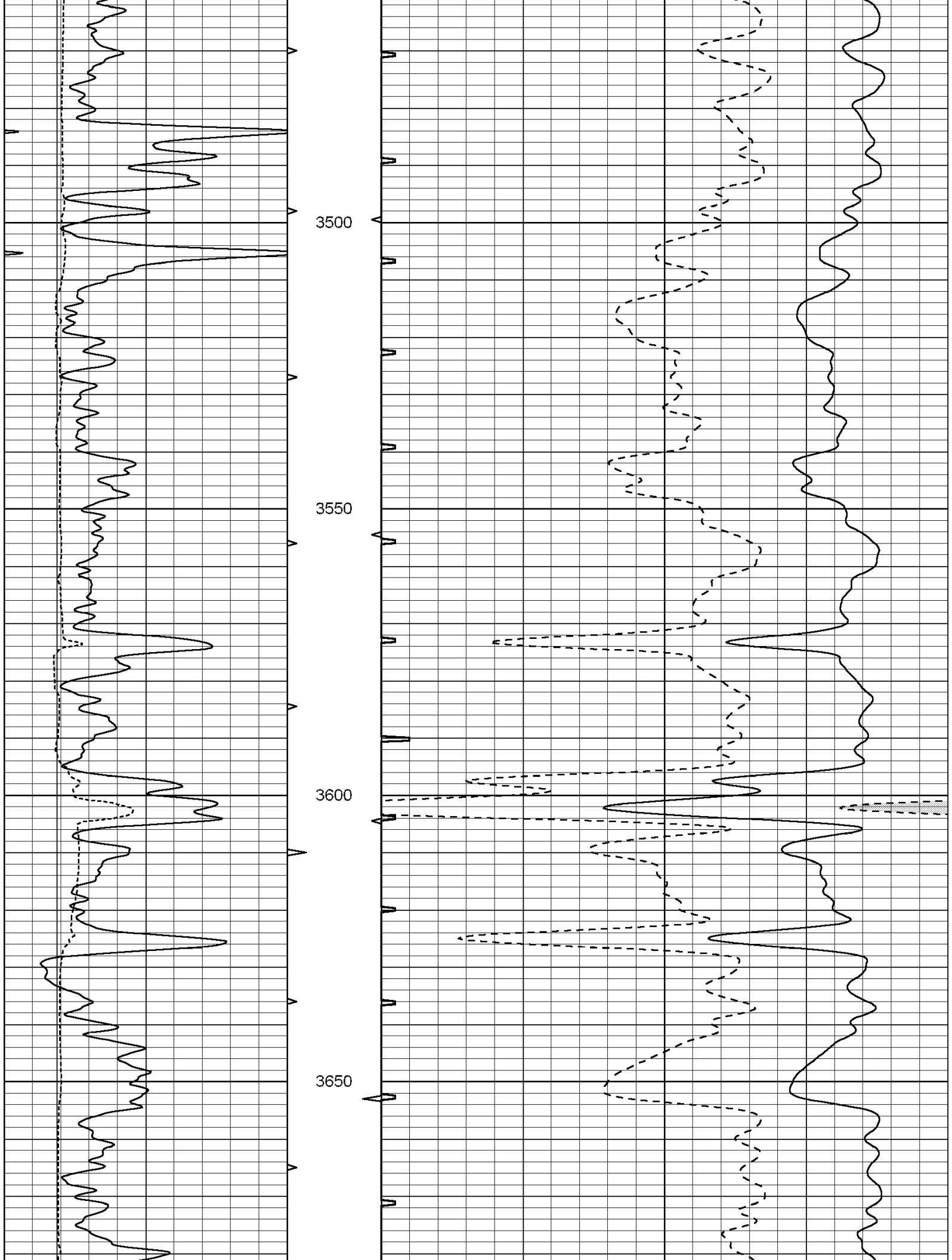


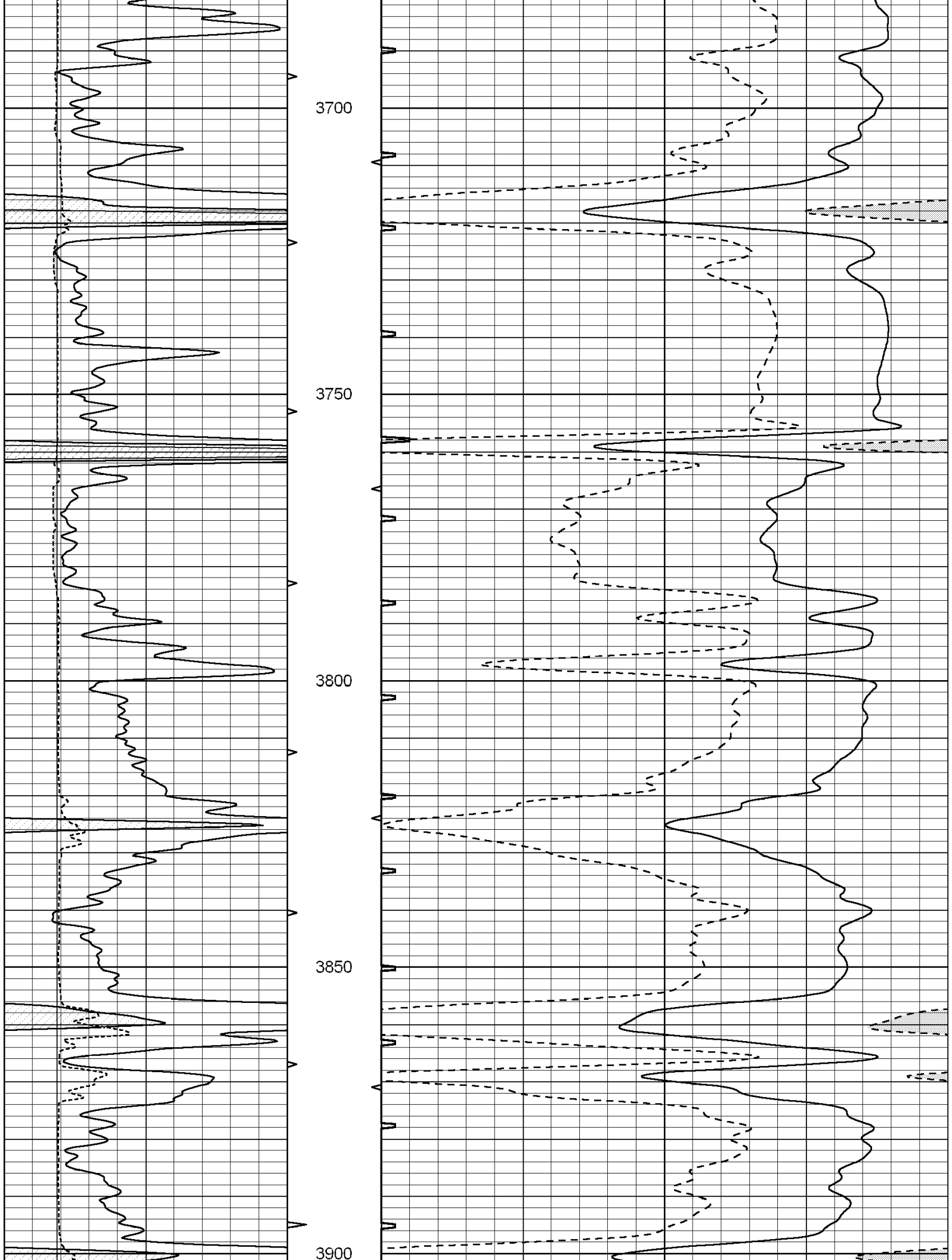


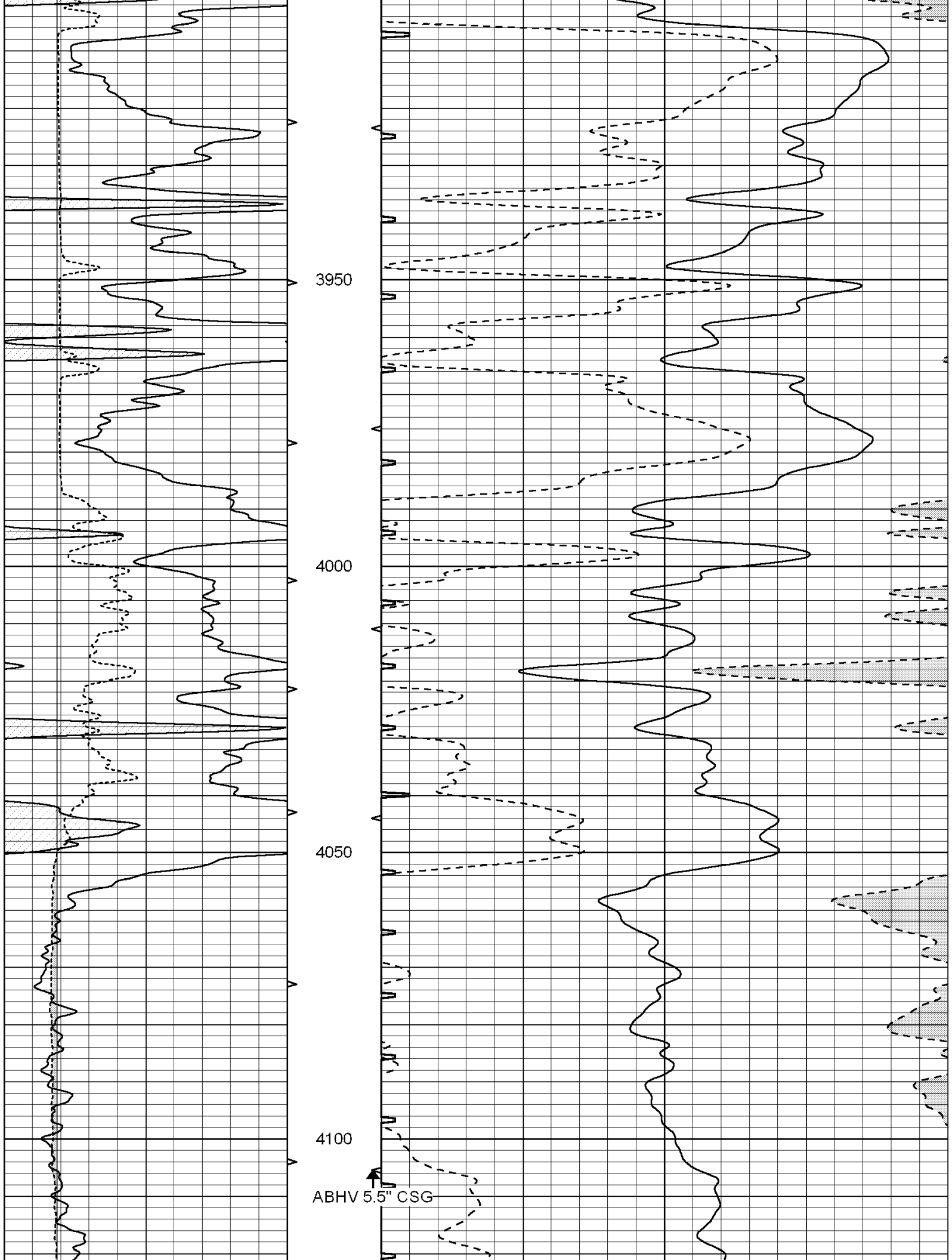












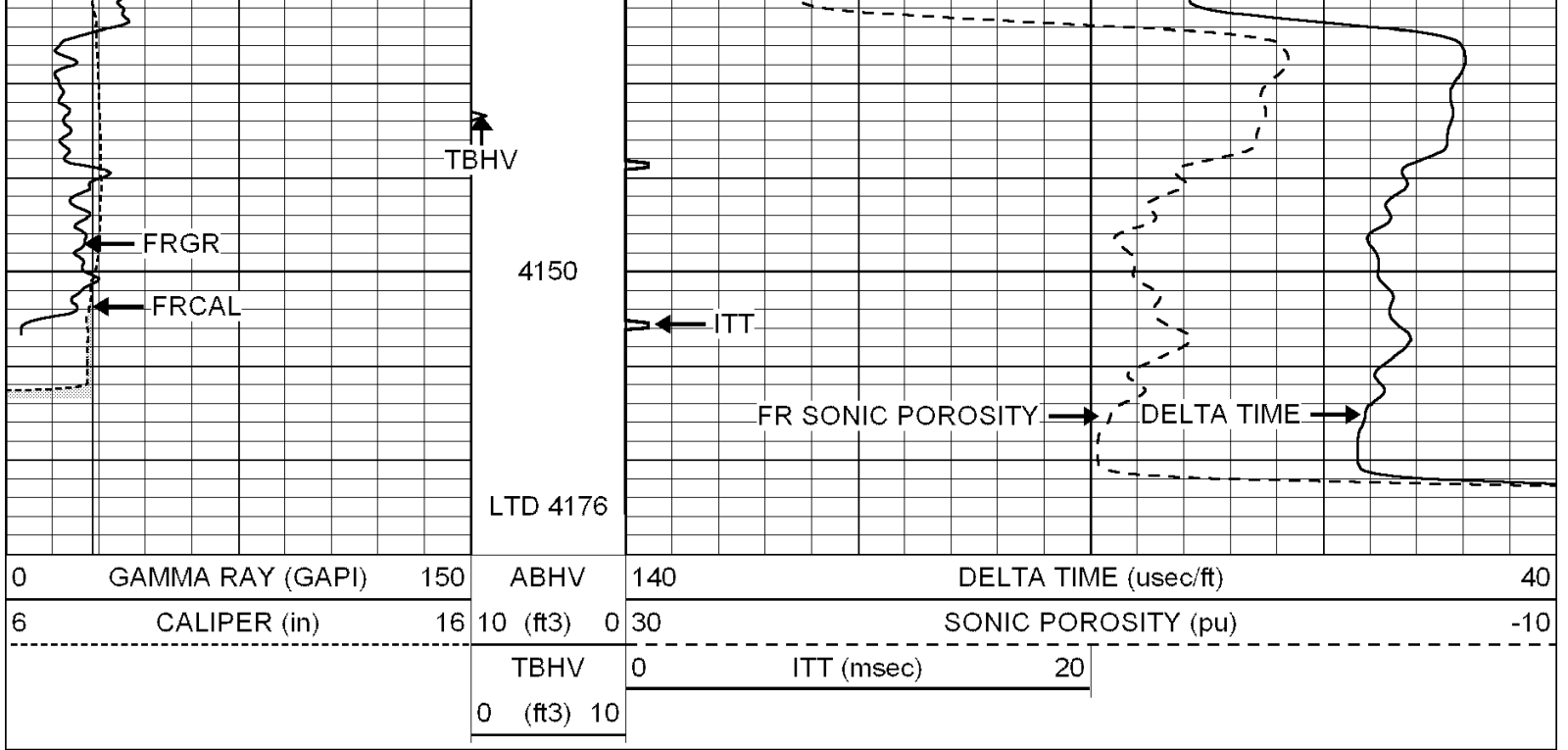
3950

4000

4050

4100

ABHV 5.5" CSG

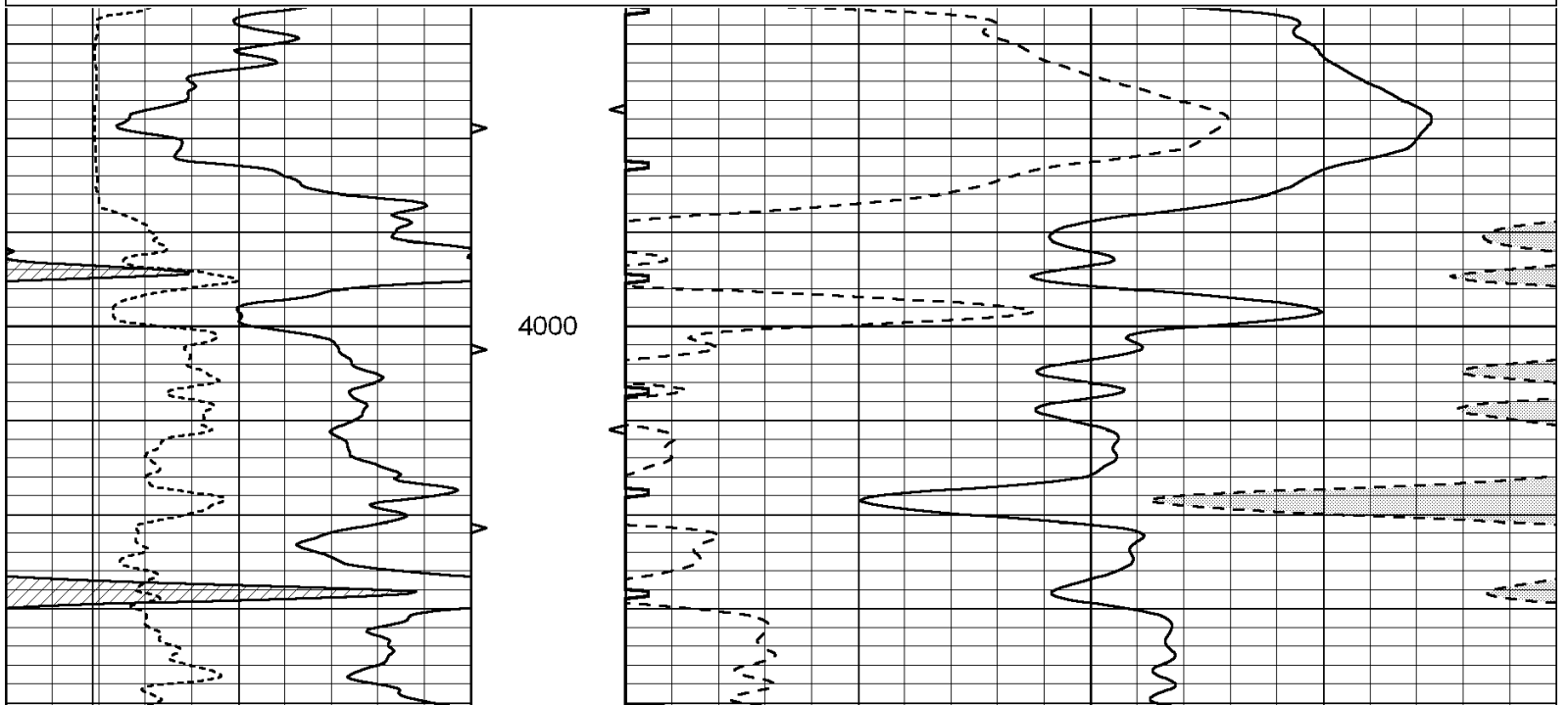


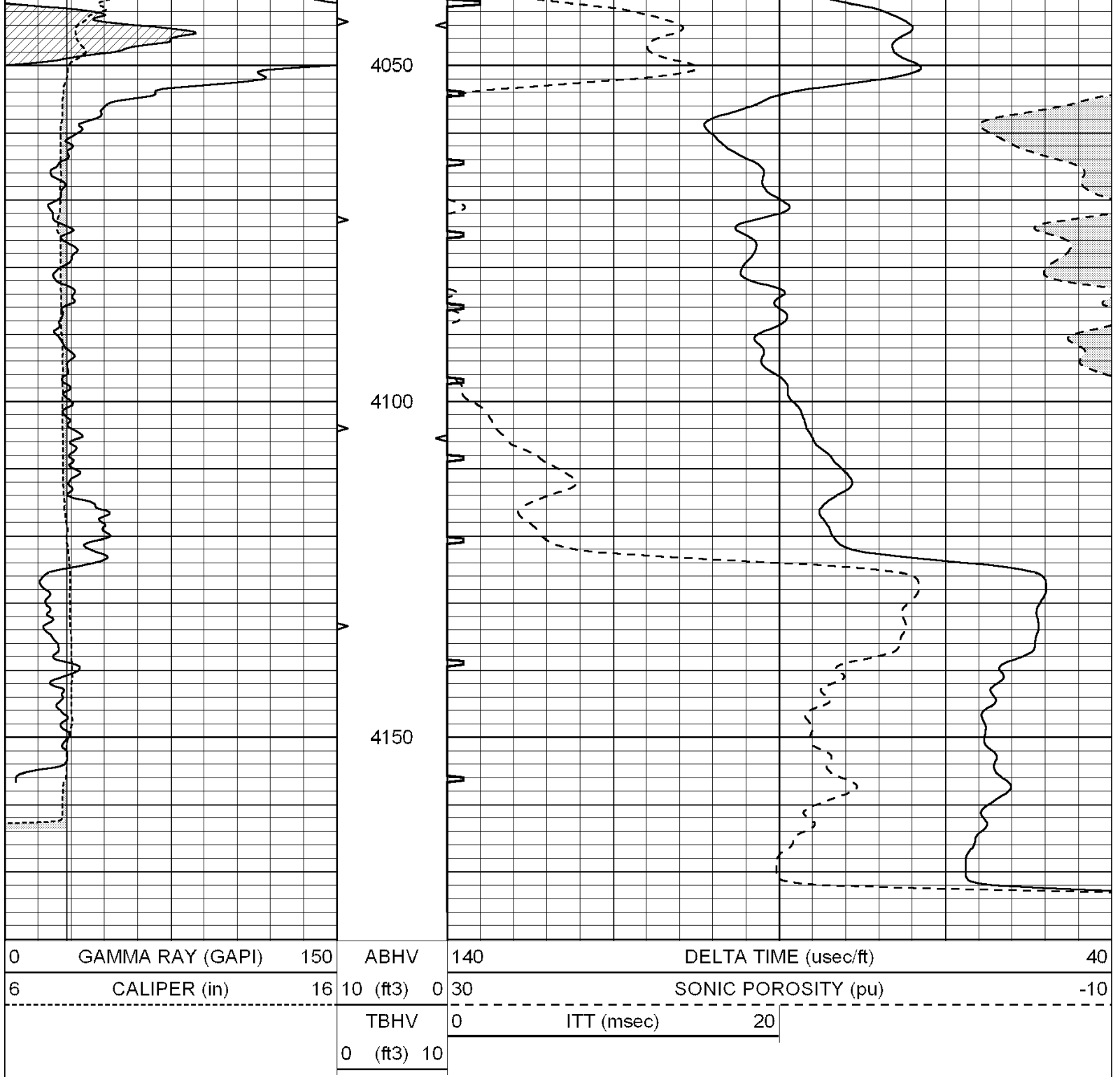
SUPERIOR  
Hays,  
Kansas

# REPEAT SECTION

Database File: 004656ddn.db  
 Dataset Pathname: pass5.1  
 Presentation Format: \_slt  
 Dataset Creation: Tue Dec 08 15:43:26 2009 by Calc Open-Cased 090629  
 Charted by: Depth in Feet scaled 1:240

0	GAMMA RAY (GAPI)	150	ABHV	140	DELTA TIME (usec/ft)	40	
6	CALIPER (in)	16	10 (ft3)	0	30	SONIC POROSITY (pu)	-10
			TBHV	0	ITT (msec)	20	
			0 (ft3)	10			





### Calibration Report

Database File: 004656ddn.db  
 Dataset Pathname: pass5  
 Dataset Creation: Tue Dec 08 15:34:20 2009 by Log Open-Cased 090629

### MICRO Calibration Report

Serial Number: MICRO6  
 Tool Model: PROBE  
 Performed: Fri Nov 27 05:40:03 2009

Caliper Calibration: Gain=3.100      Offset=4.177

References	Low Cal	High Cal
Readings	7.900	14.250
	1.185	2.814

1.5" Calibration:

Gain=40.781

Offset=-0.851

References  
Readings

Low Cal  
0.000  
0.008

High Cal  
20.000  
1.200

2" Calibration:

Gain=40.739

Offset=-0.193

References  
Readings

Low Cal  
0.000  
0.008

High Cal  
20.000  
0.888

Gamma Ray Calibration Report

Serial Number:  
Tool Model:  
Performed:

GR6  
OPEN  
Tue Nov 10 08:32:36 2009

Calibrator Value:

150.0

GAPI

Background Reading:  
Calibrator Reading:

0.0  
276.0

cps  
cps

Sensitivity:

0.5535

GAPI/cps