



**SUPERIOR
Hays,
Kansas**

**DUAL
INDUCTION
LOG**

Company	VINCENT OIL CORPORATION	Location:	API # : 15-095-22198-00-00	Other Services CDL/CNL MEL/SON
Well	WILSON # 1-14	1650' FSL @ 1650' FWL SW-NE-SW		Elevation K.B. 1619 D.F. 1617 G.L. 1609
Field	WILDCAT	SEC 14 TWP 28 RGE 8W		
County	KINGMAN	GROUND LEVEL	Elevation	1609
State	KANSAS	Log Measured From KELLY BUSHING 10 A.G.L.	Drilling Measured From KELLY BUSHING	

Date	12-08-09
Run Number	ONE
Depth Driller	4185
Depth Logger	4176
Bottom Logged Interval	4174
Top Log Interval	0
Casing Driller	8 5/8" @ 266
Casing Logger	266
Bit Size	7 7/8
Type Fluid In Hole	CHEMICAL MUD
Density / Viscosity	8.9/46
pH / Fluid Loss	9.2/9.5
Source of Sample	FLOWLINE
Rm @ Meas. Temp	.9 @ 22F
Rmf @ Meas. Temp	.675 @ 22F
Rmc @ Meas. Temp	1.44 @ 22F
Source of Rmf / Rmc	MEASUREMENT
Rm @ BHT	.169 @ 117F
Time Circulation Stopped	2 HOURS
Time Logger on Bottom	
Maximum Recorded Temperature	117F
Equipment Number	680
Location	HAYS, KANSAS
Recorded By	JASON CAPPELLUCCI
Witnessed By	M.L. KORPHAGE
JEFF GRONEWEG	

<<< Fold Here >>>

All interpretations are opinions based on inferences from electrical or other measurements and we cannot and do not guarantee the accuracy or correctness of any interpretation, and we shall not, except in the case of gross or willful negligence on our part, be liable or responsible for any loss, costs, damages, or expenses incurred or sustained by anyone resulting from any interpretation made by any of our officers, agents or employees. These interpretations are also subject to our general terms and conditions set out in our current Price Schedule.

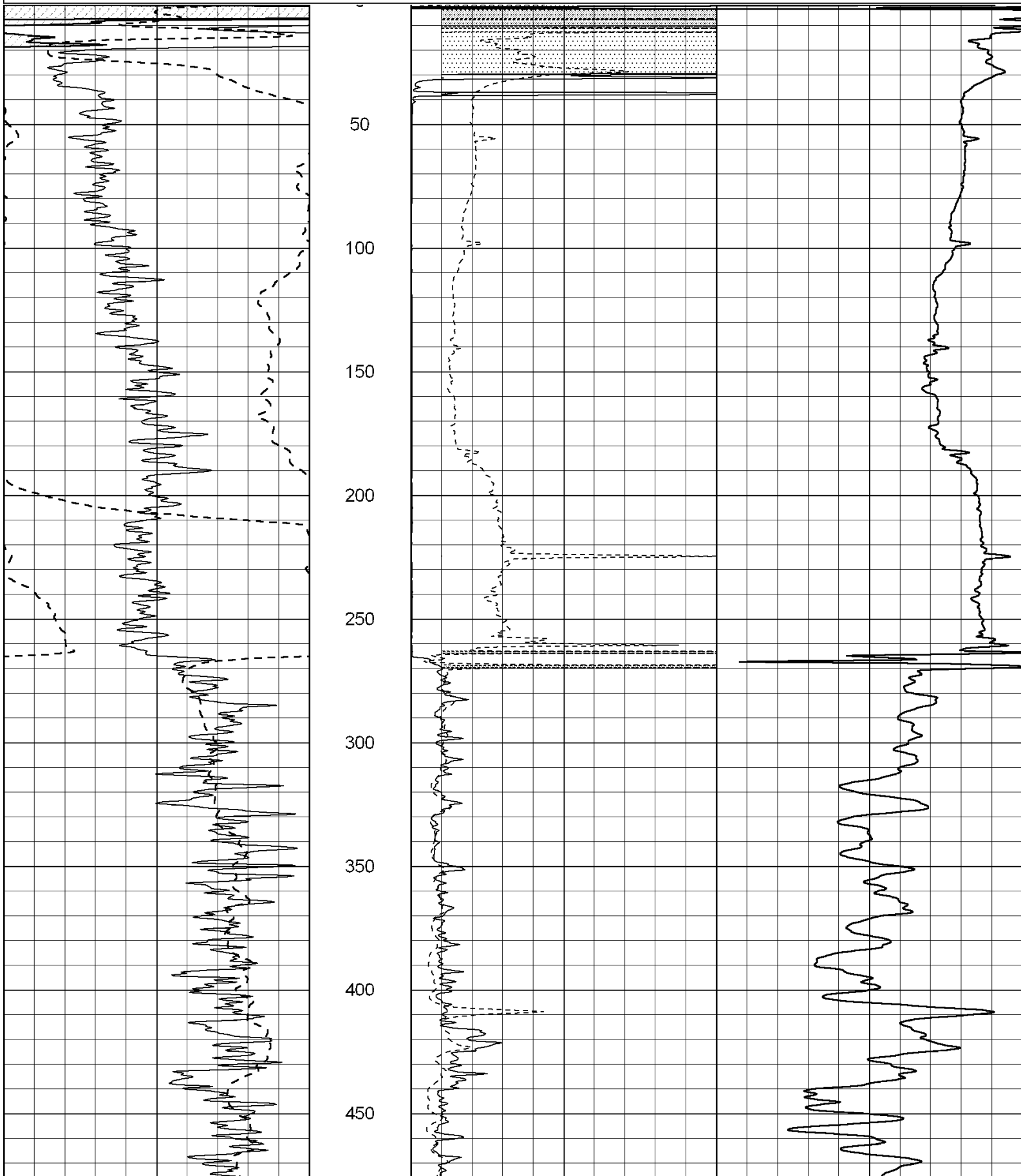
Comments

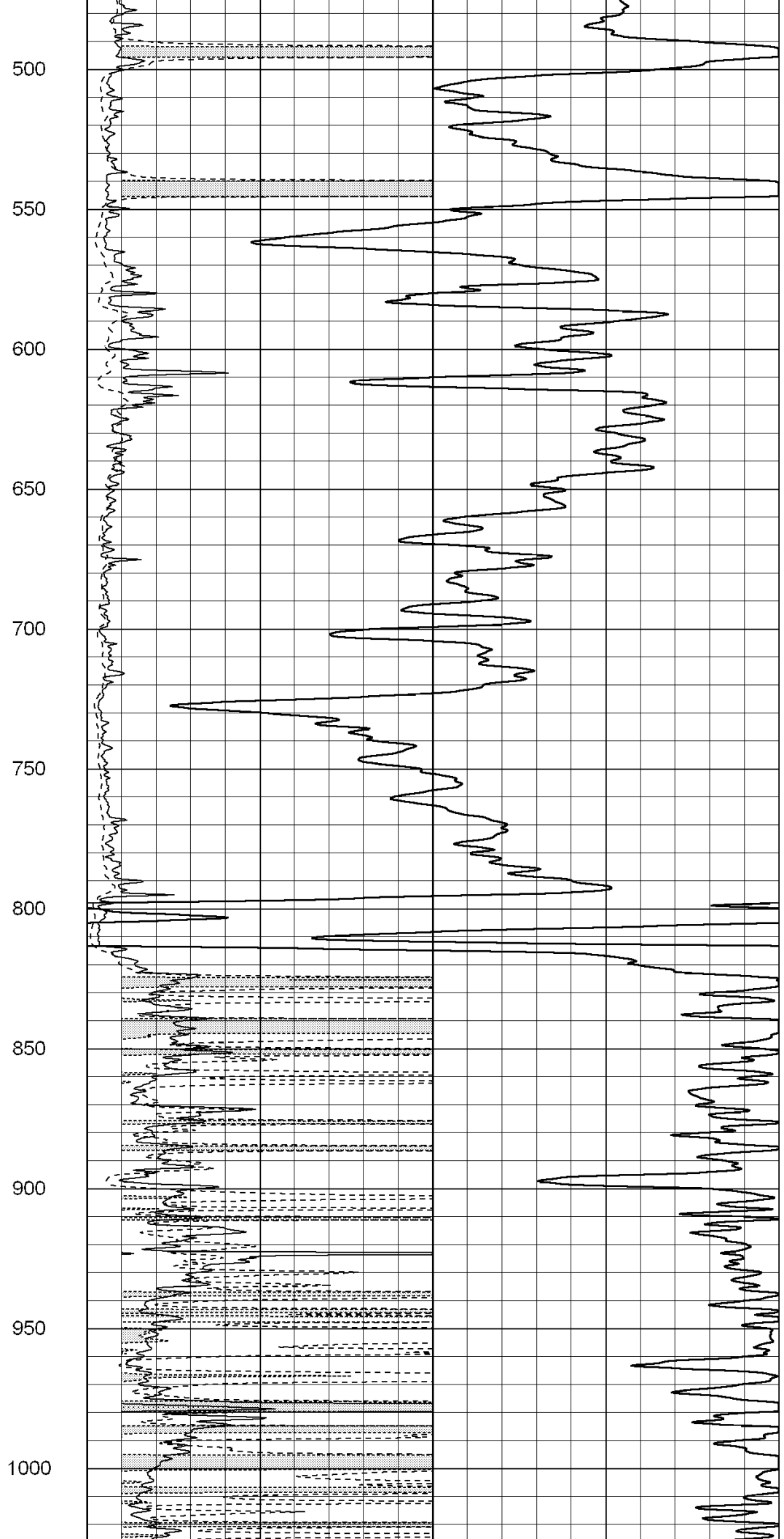
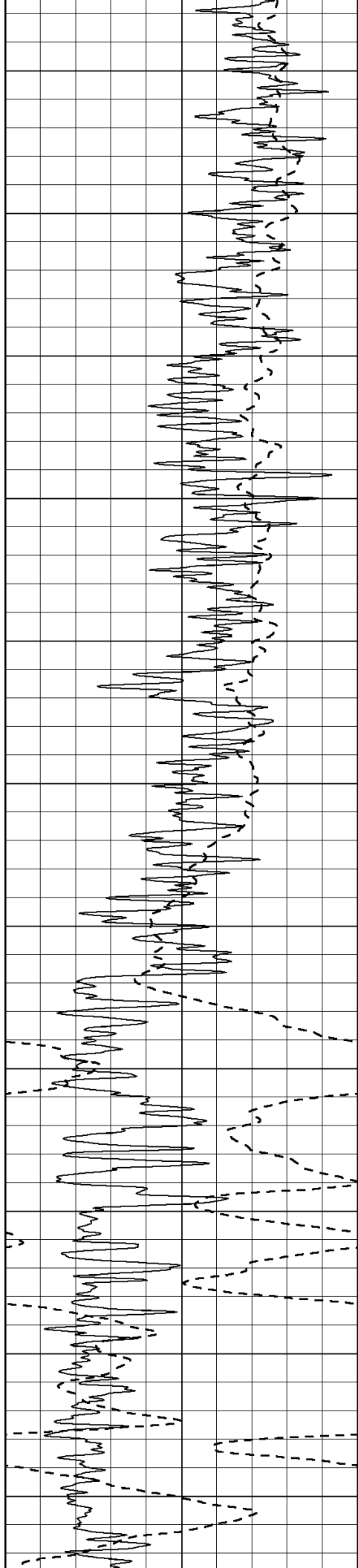
THANK YOU FOR USING SUPERIOR WELL SERVICES HAYS, KANSAS (785) 628-6395
DIRECTIONS
KINGMAN KS., 2 S ON HWY 14 - 2.5W - S INTO

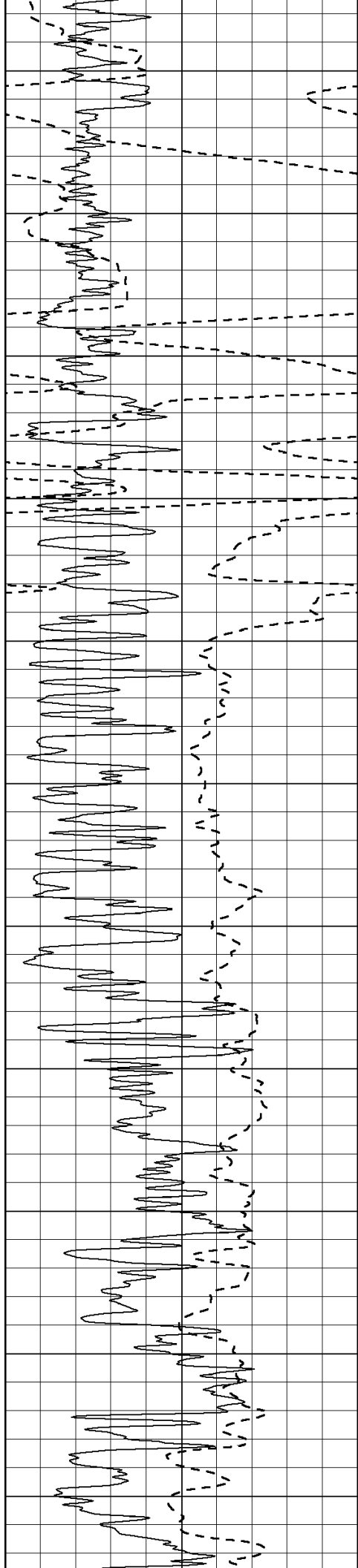
0	Gamma Ray (GAPI)	150
-100	SP (mV)	100

0	RLL3 (Ohm-m)	50
0	Deep Induction (Ohm-m)	50

1000	CILD (mmho/m)	0
50	RILD X10 (Ohm-m)	500
50	RLL3 X10 (Ohm-m)	500







1050

1100

1150

1200

1250

1300

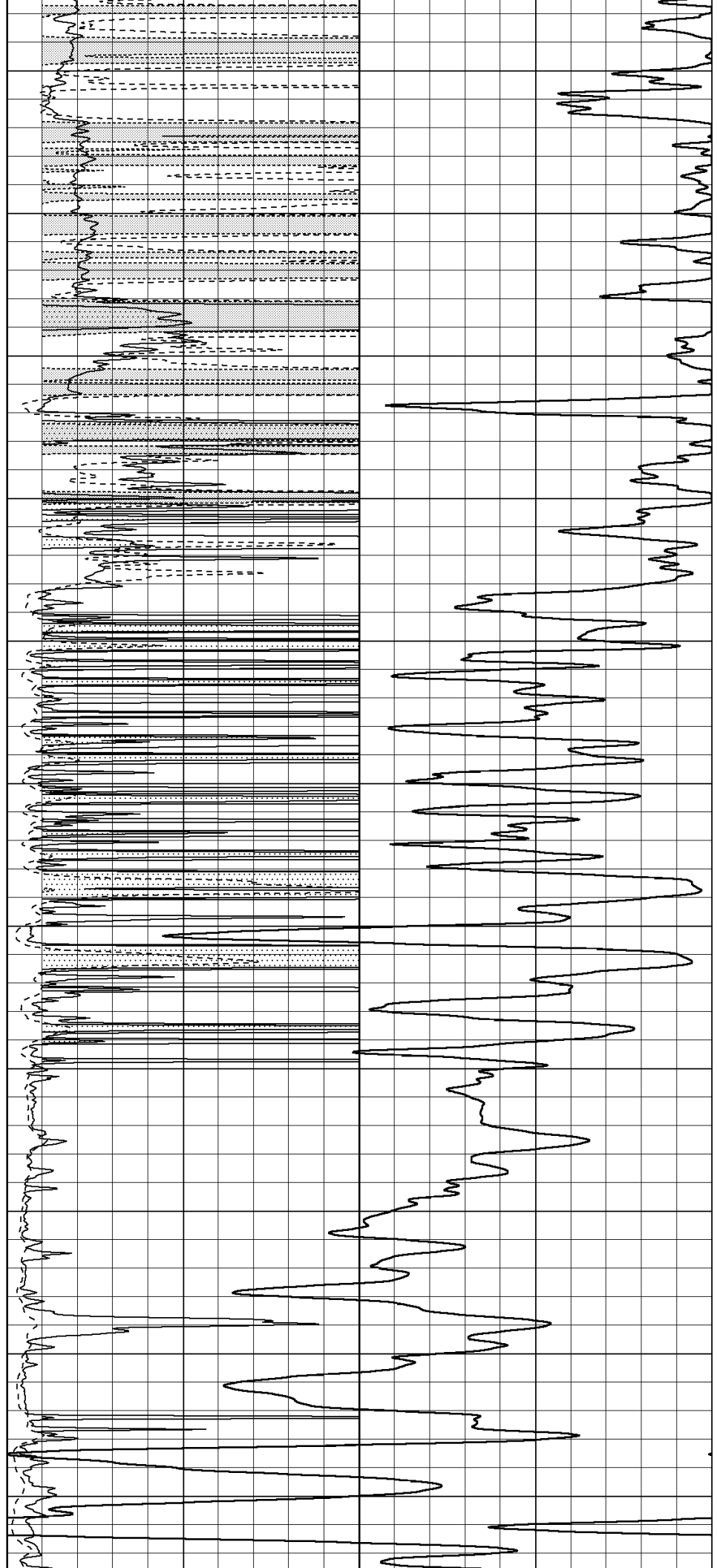
1350

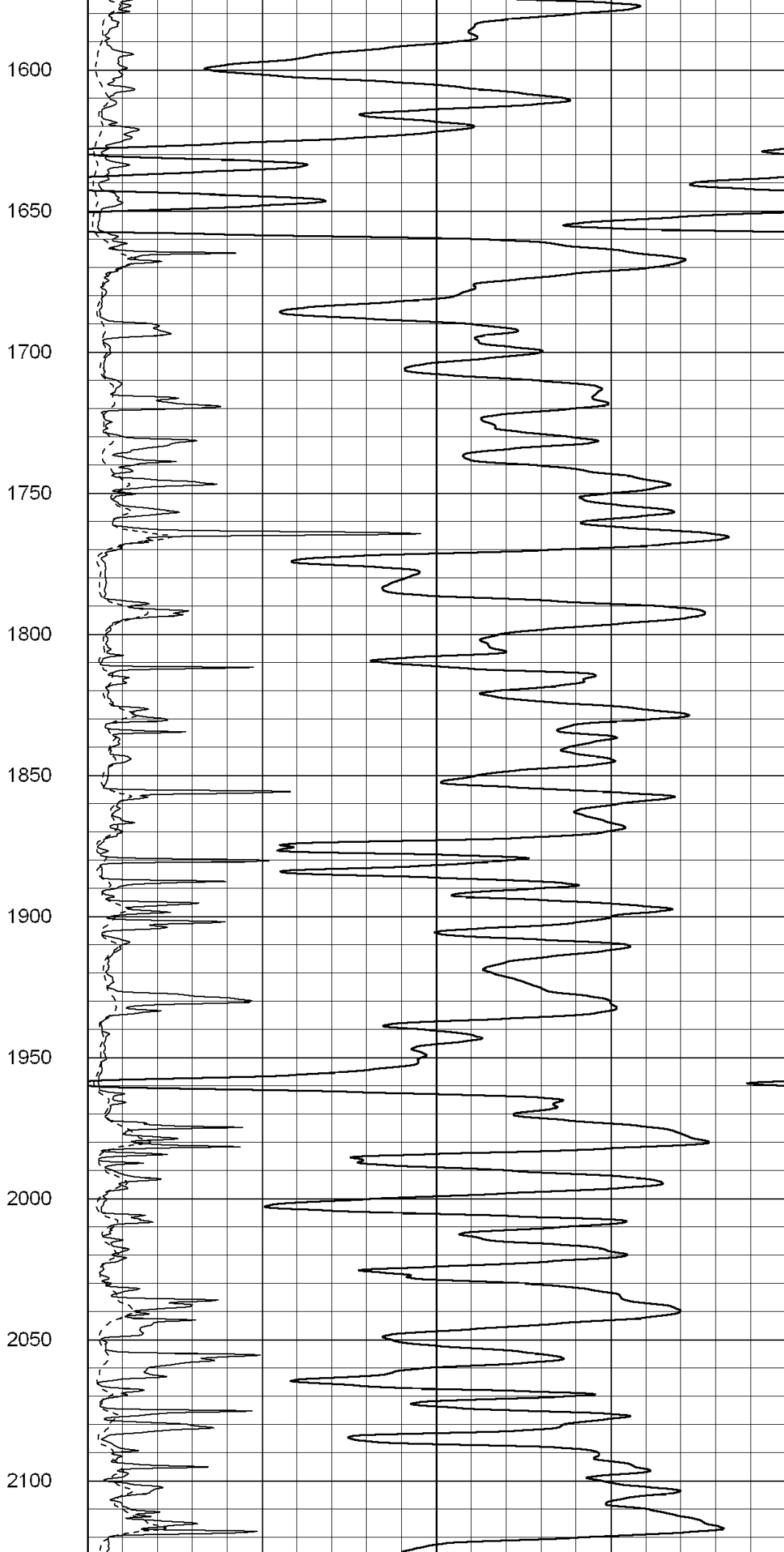
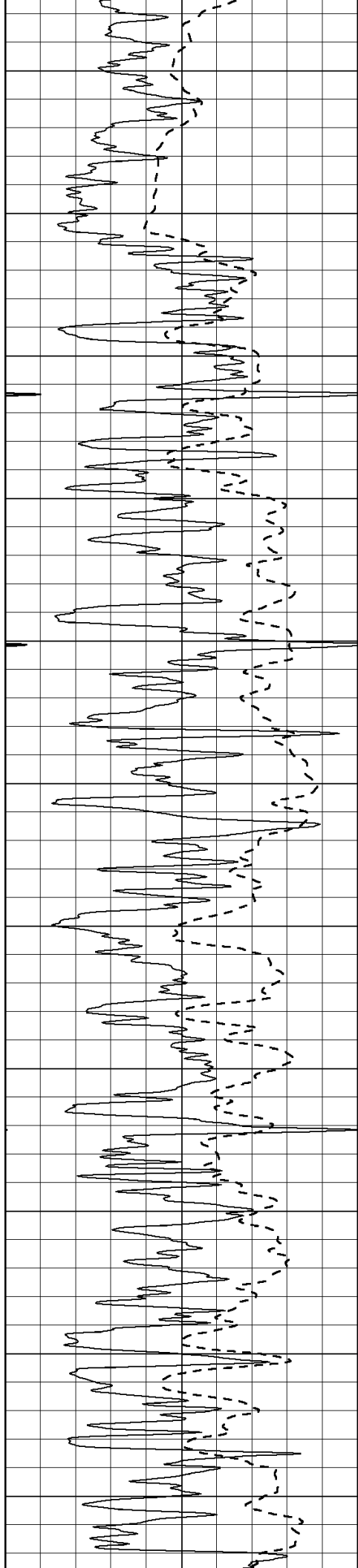
1400

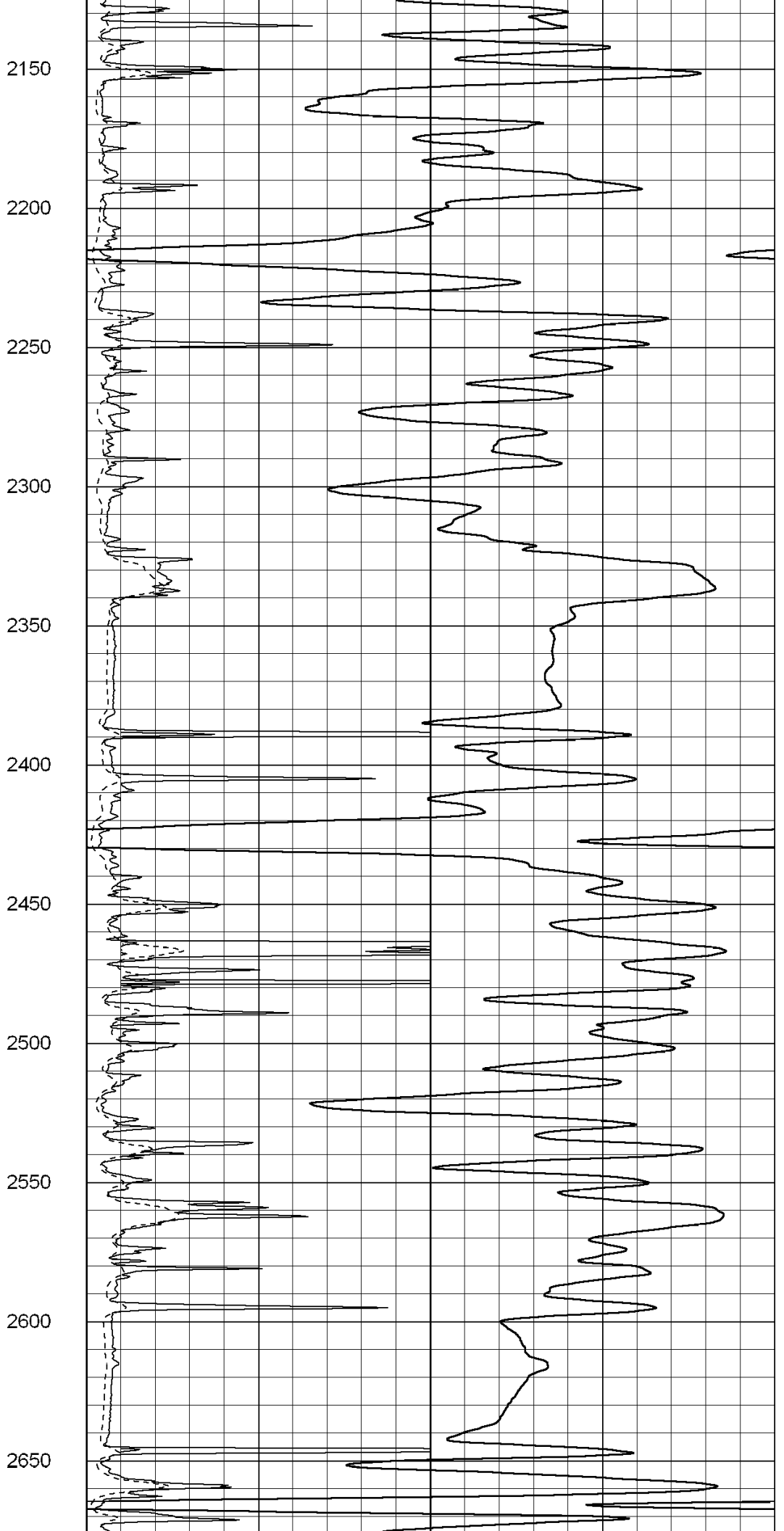
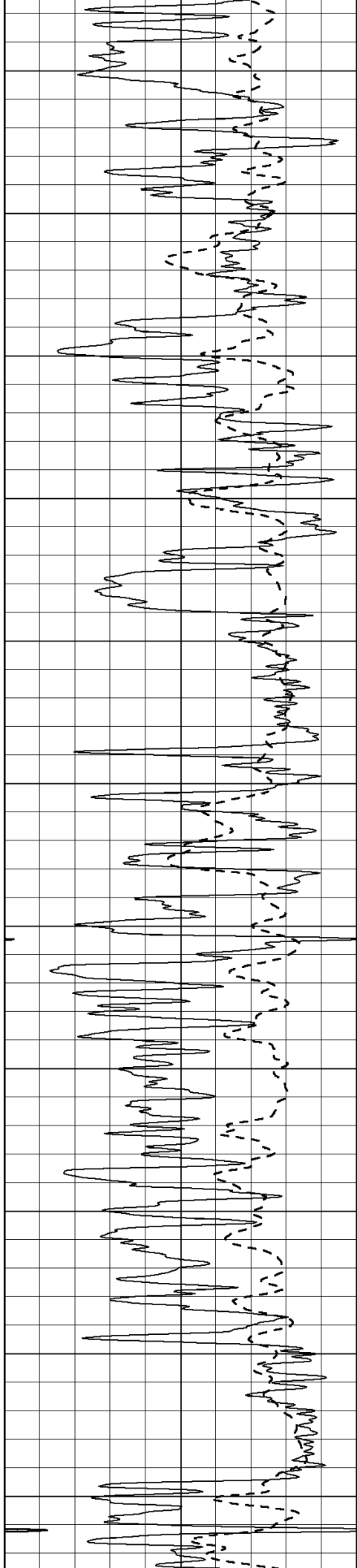
1450

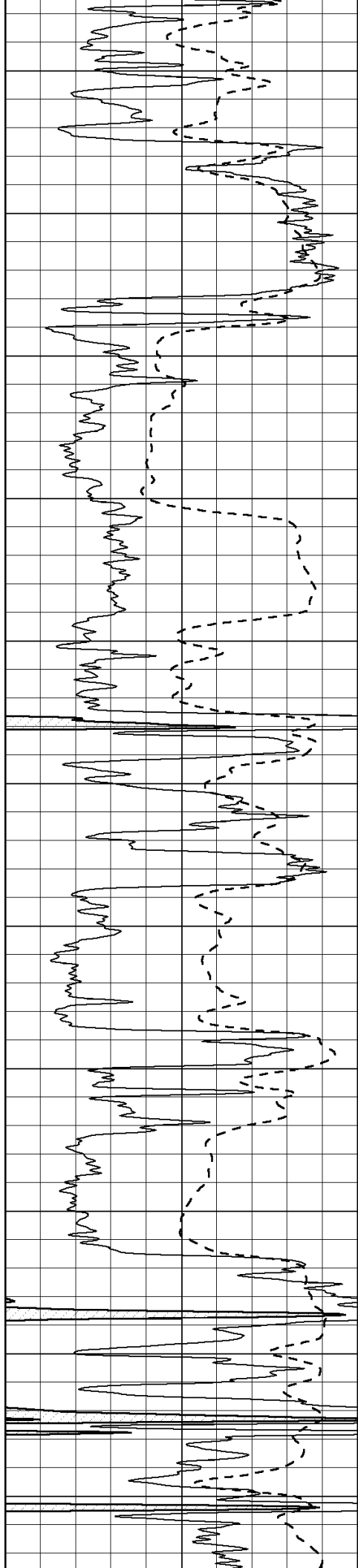
1500

1550









2700

2750

2800

2850

2900

2950

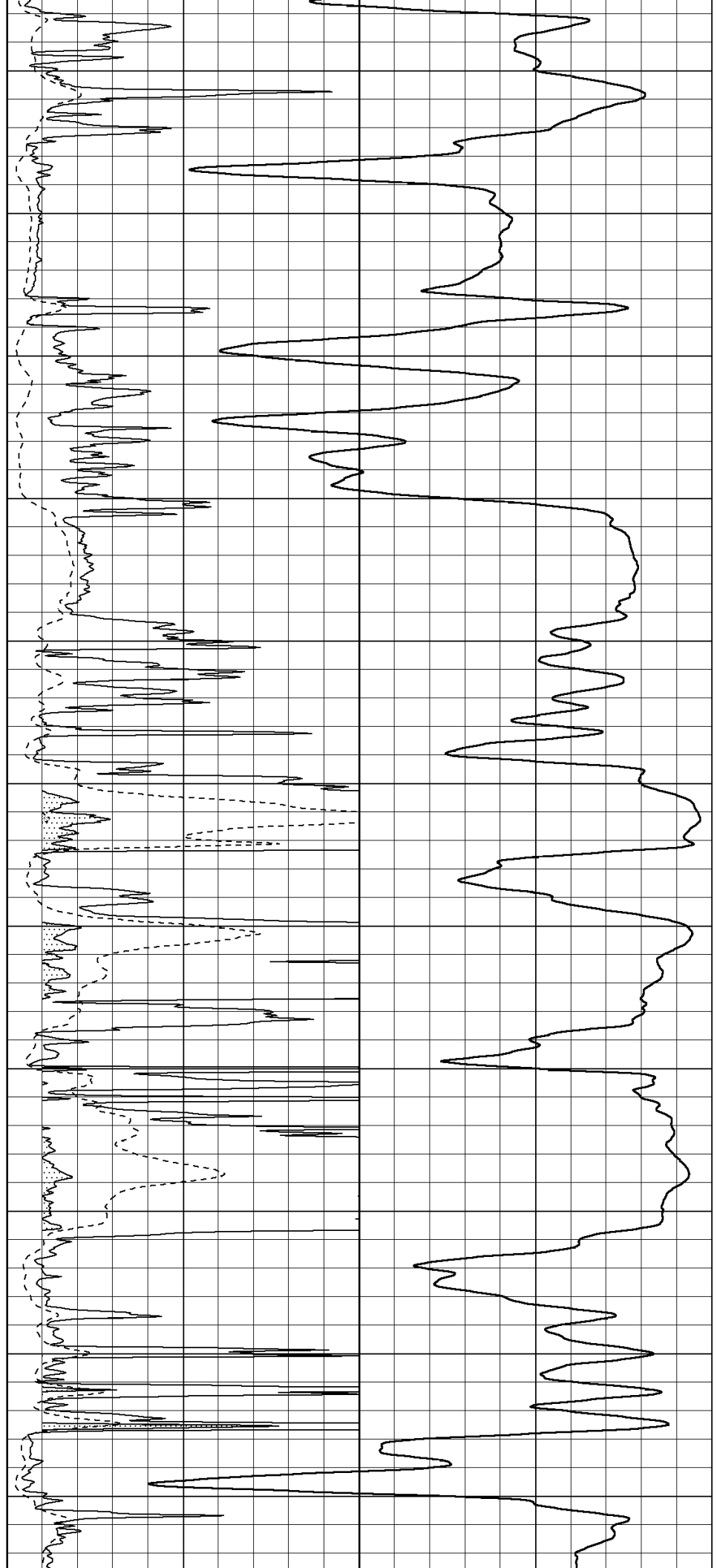
3000

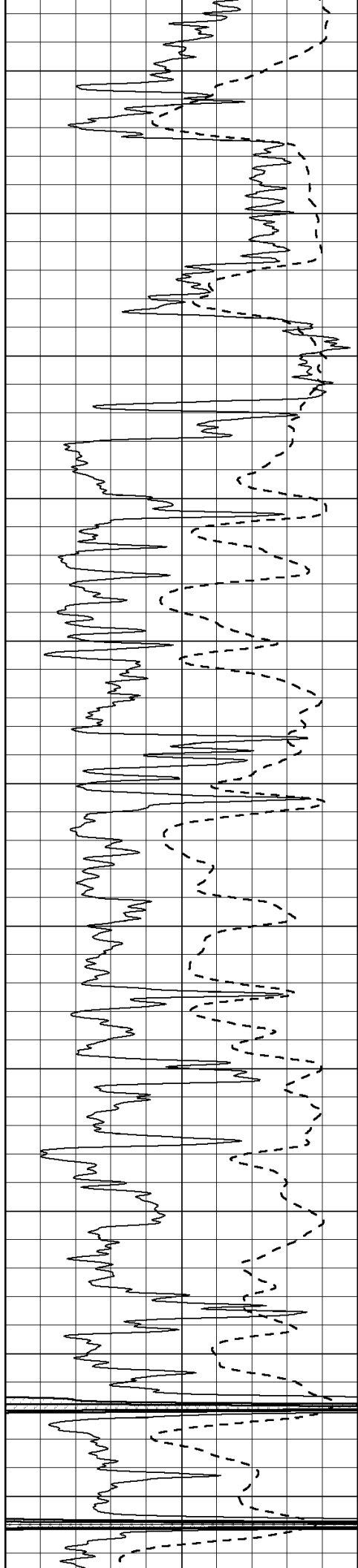
3050

3100

3150

3200





3250

3300

3350

3400

3450

3500

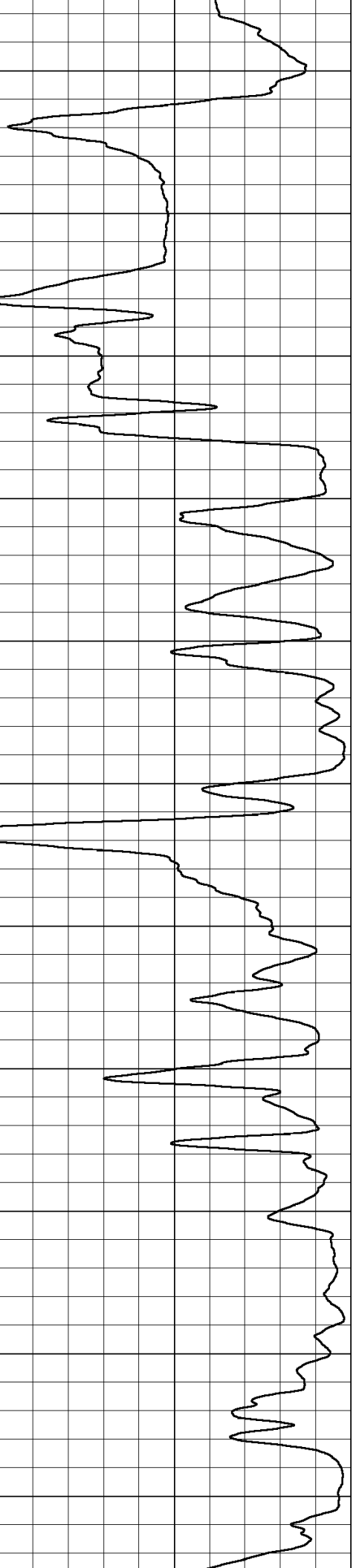
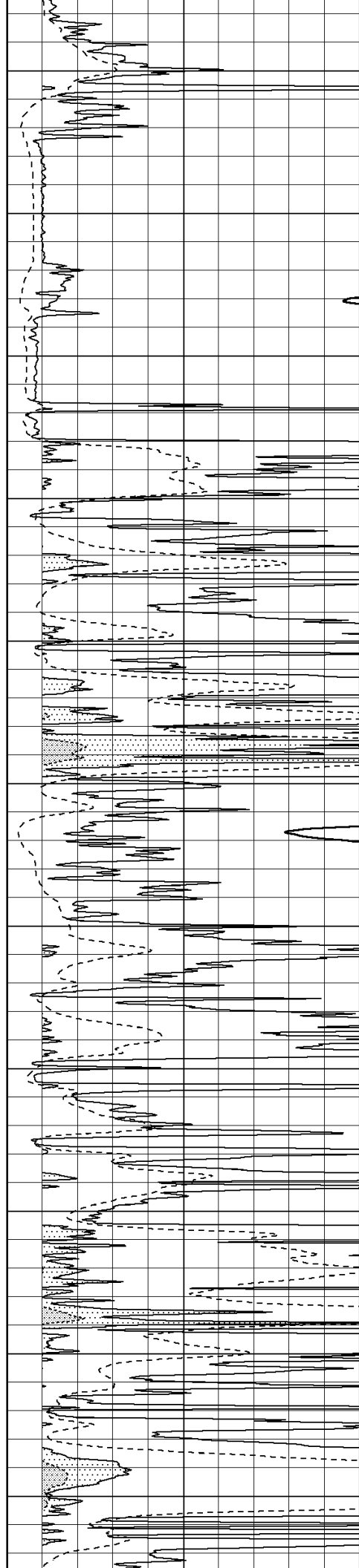
3550

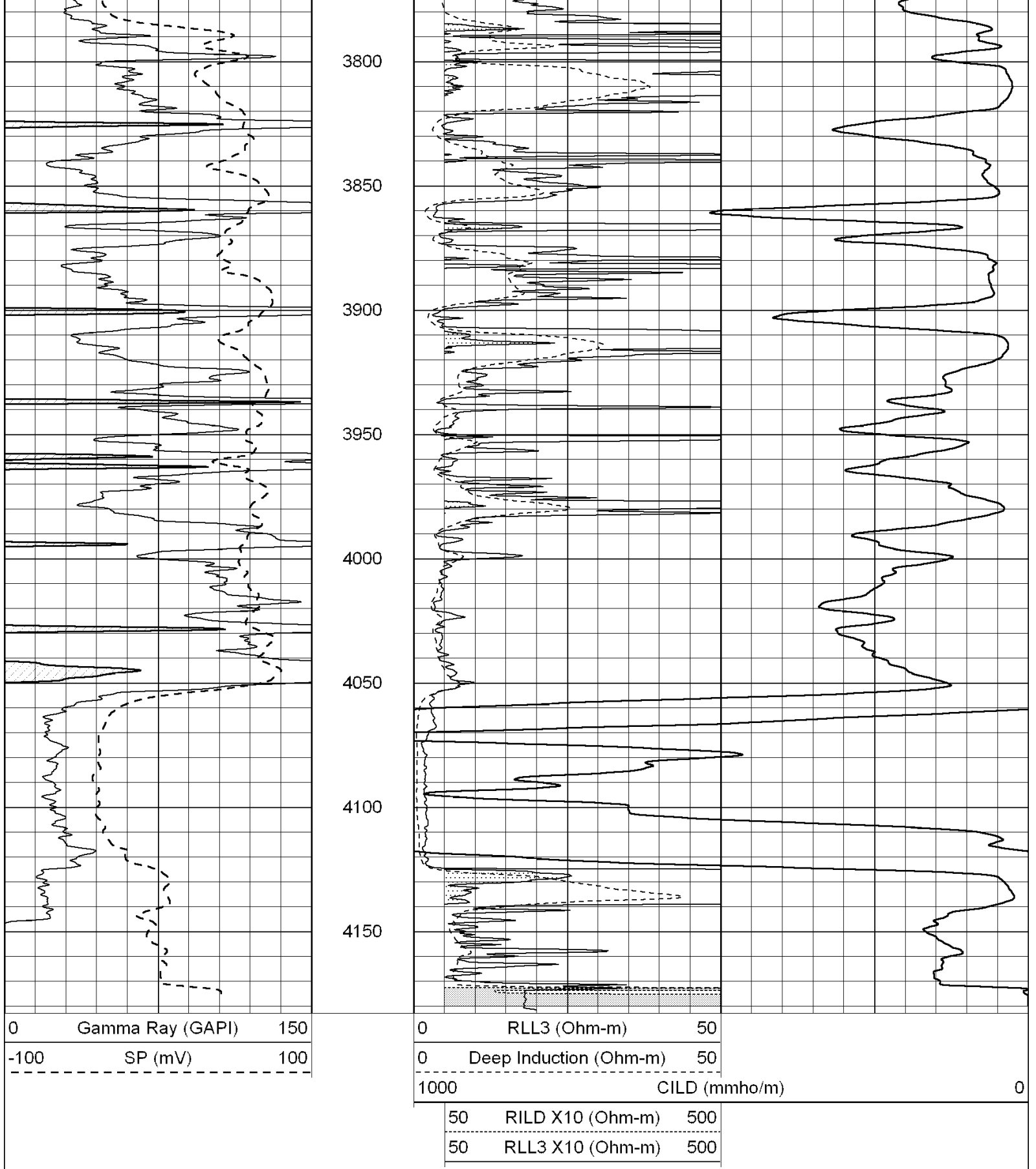
3600

3650

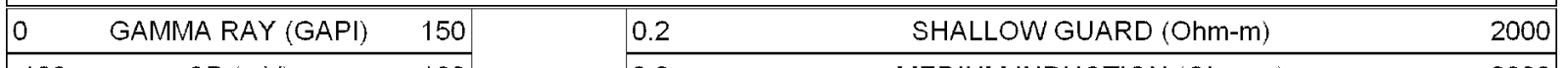
3700

3750



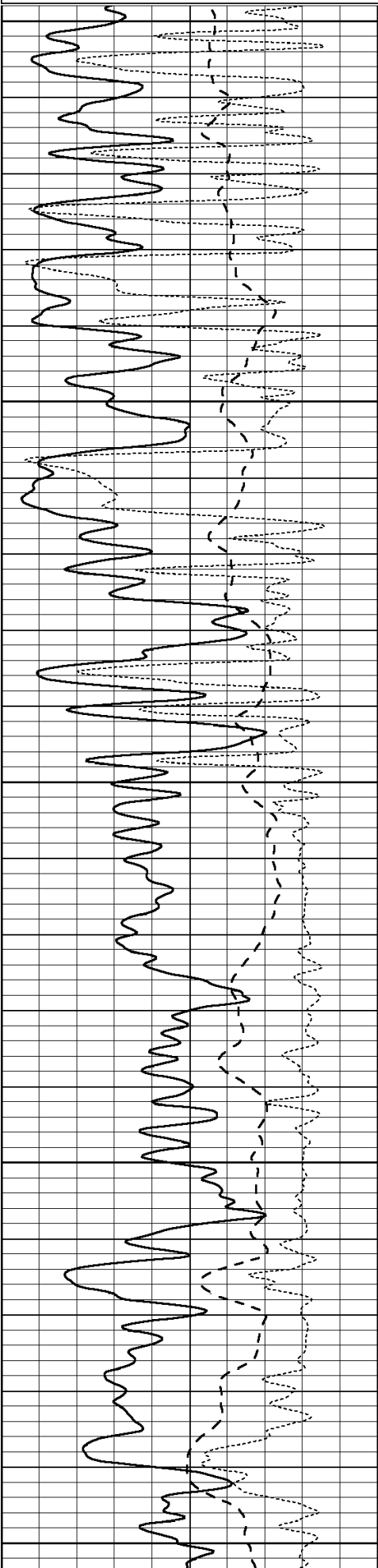


Database File: 004656ddn.db
 Dataset Pathname: pass3.1
 Presentation Format: _dil
 Dataset Creation: Tue Dec 08 14:50:36 2009 by Calc Open-Cased 090629
 Charted by: Depth in Feet scaled 1:240

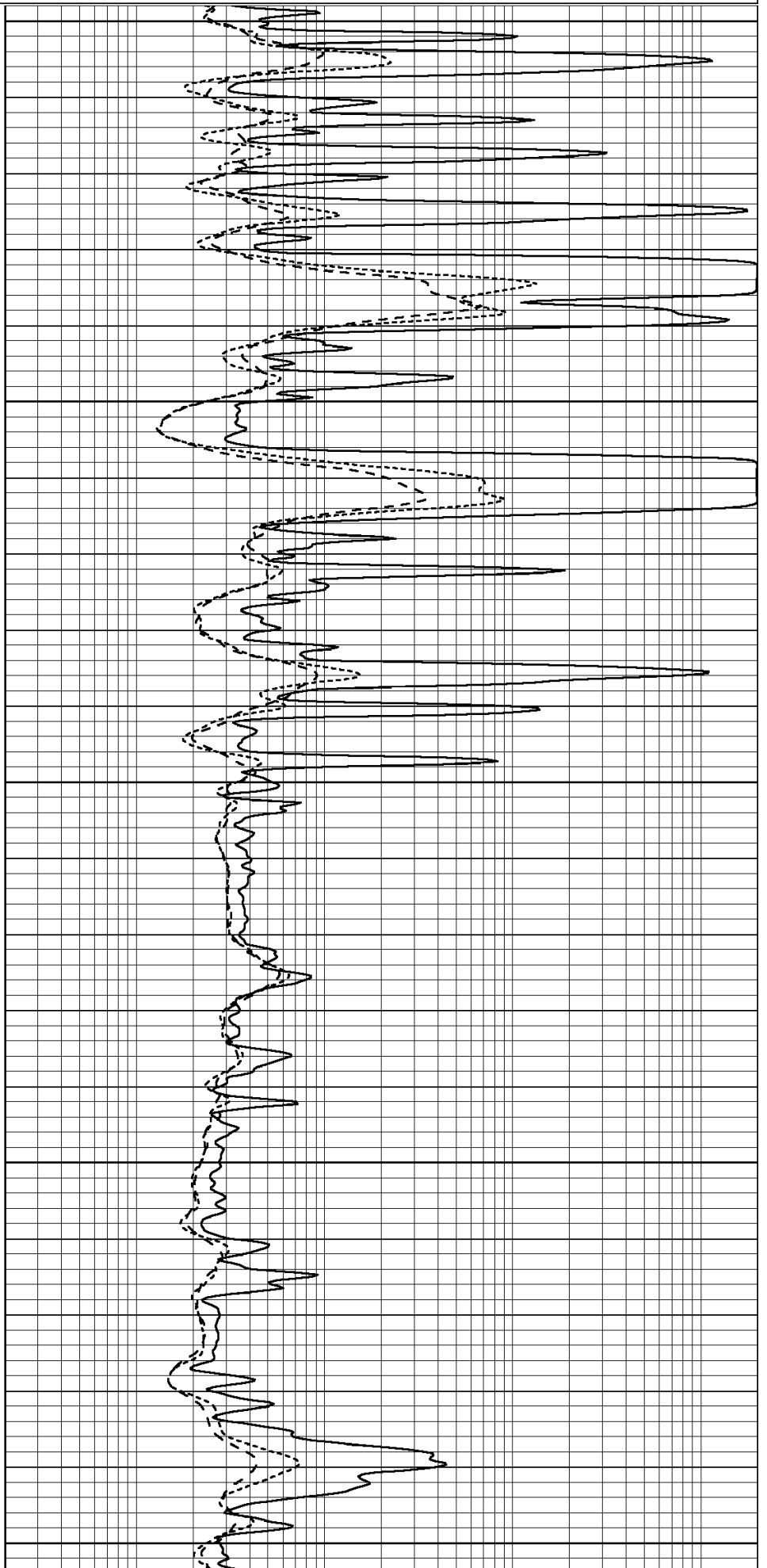


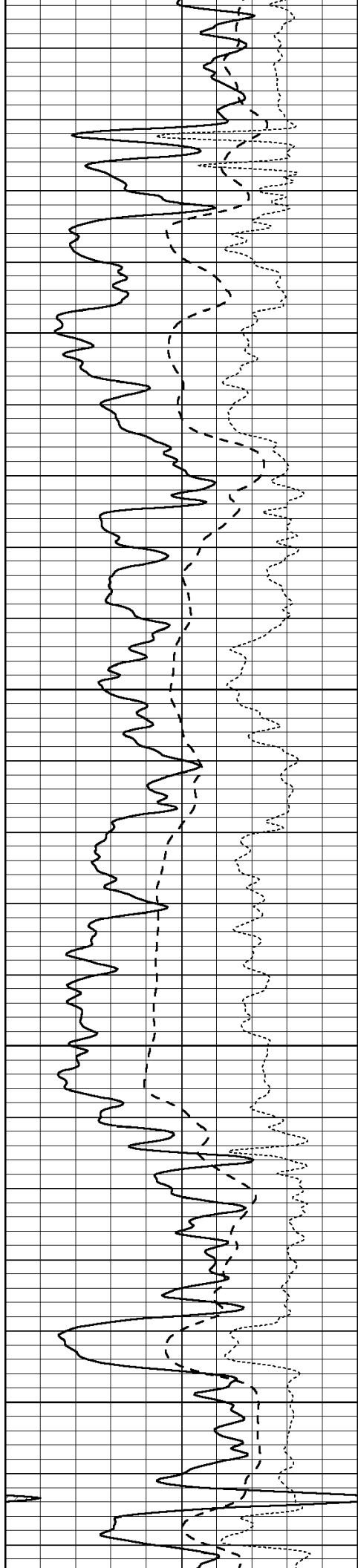
-100 SP (mV) 100
-250 Rxo/Rt 50

0.2 MEDIUM INDUCTION (Ohm-m) 2000
0.2 DEEP INDUCTION (Ohm-m) 2000



1300
1350
1400
1450
1500



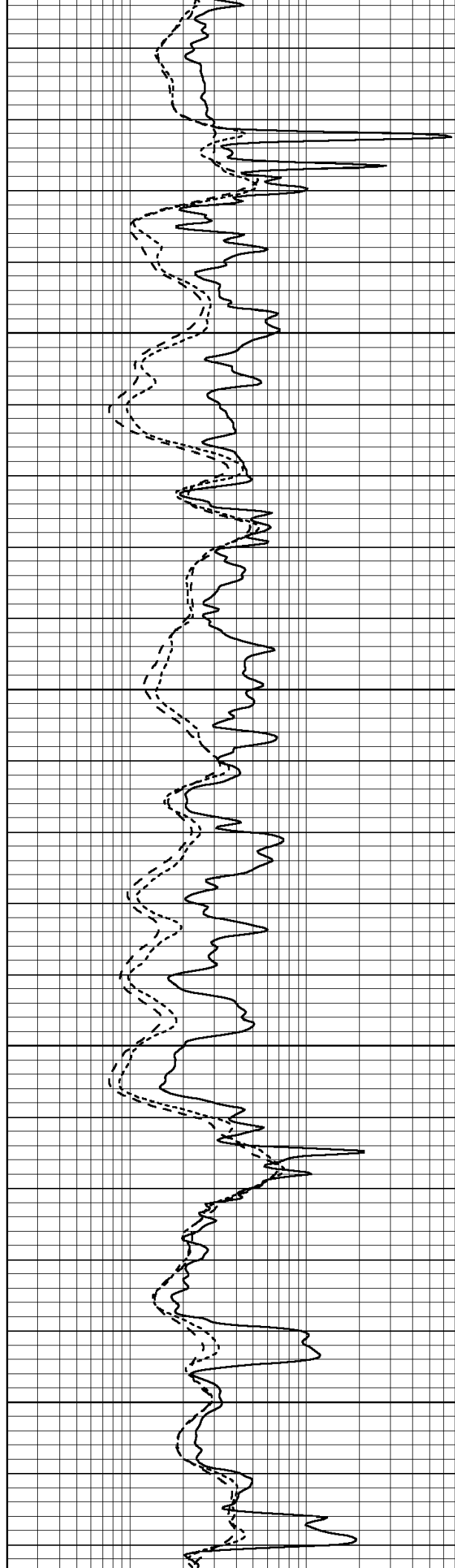


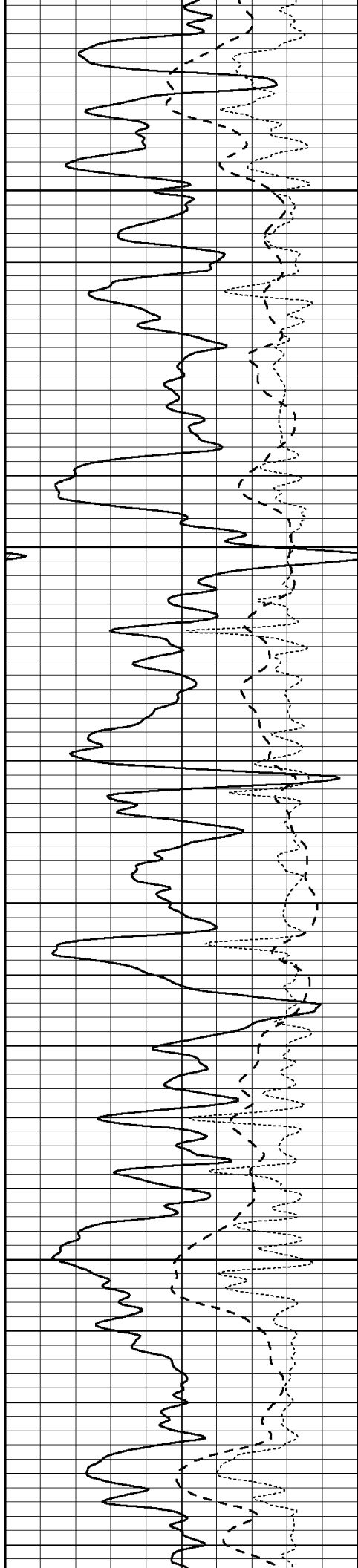
1550

1600

1650

1700



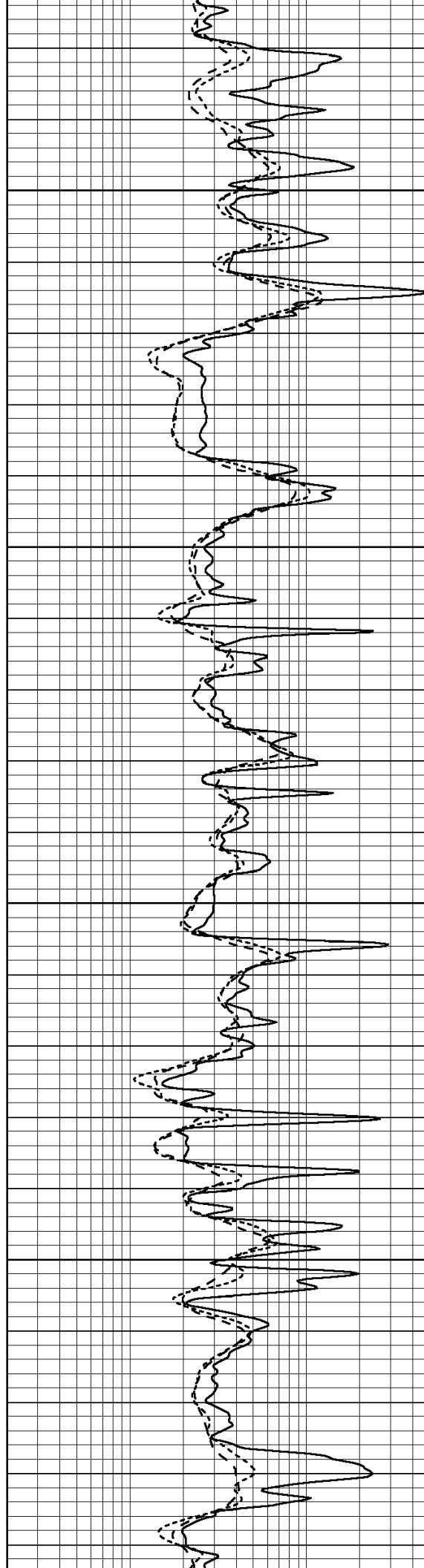


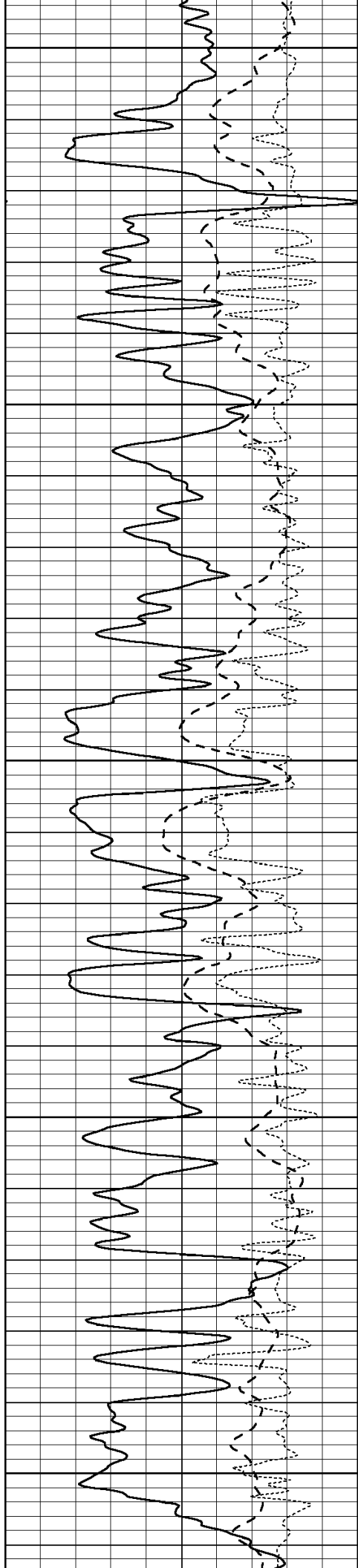
1750

1800

1850

1900





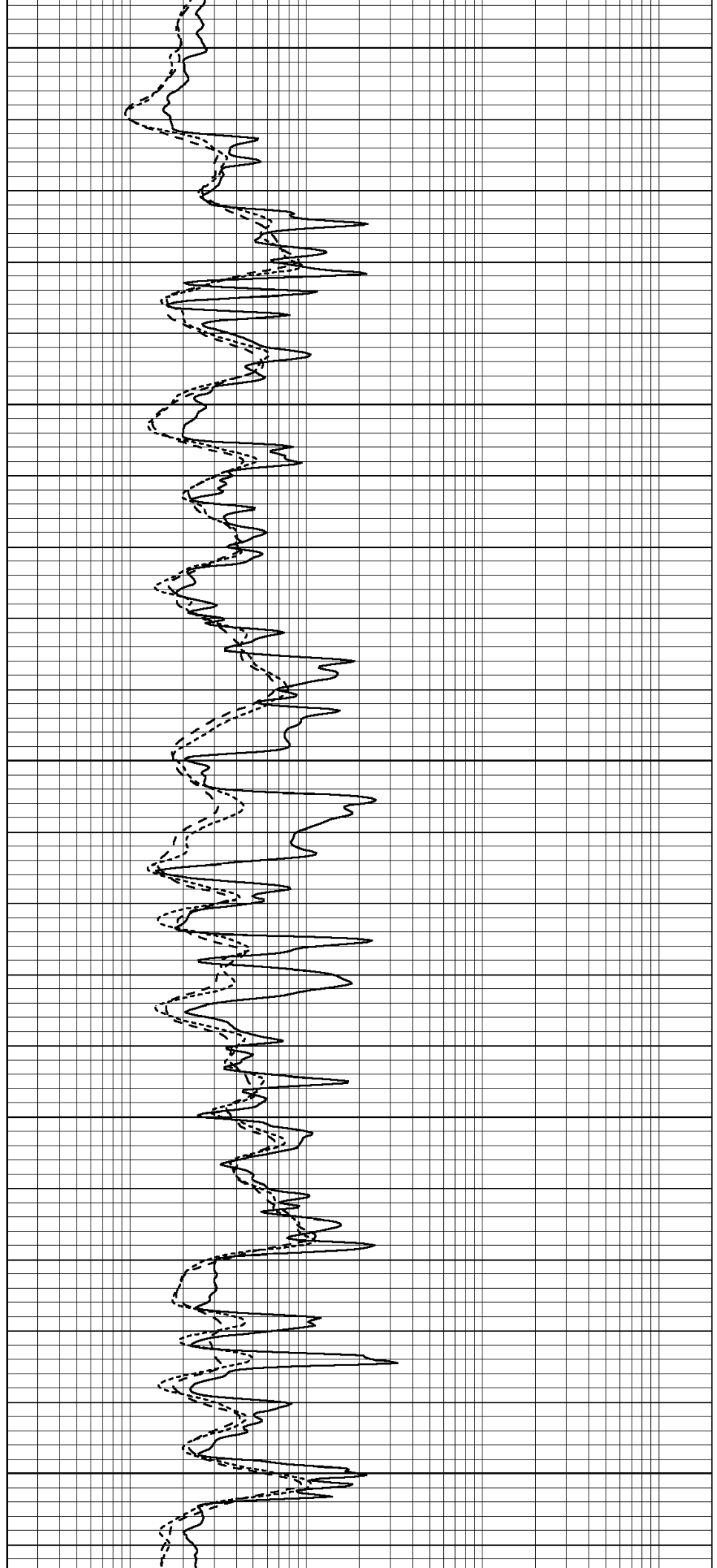
1950

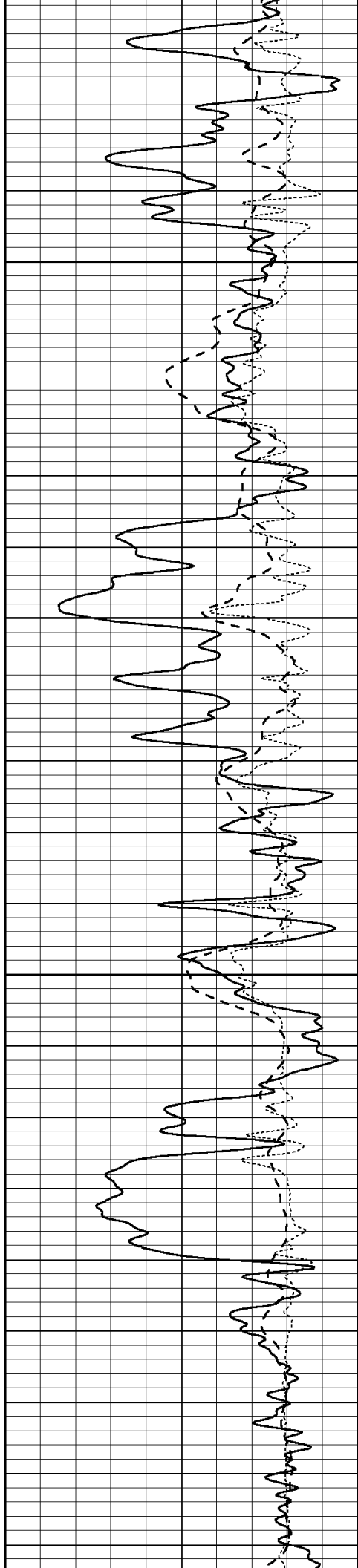
2000

2050

2100

2150



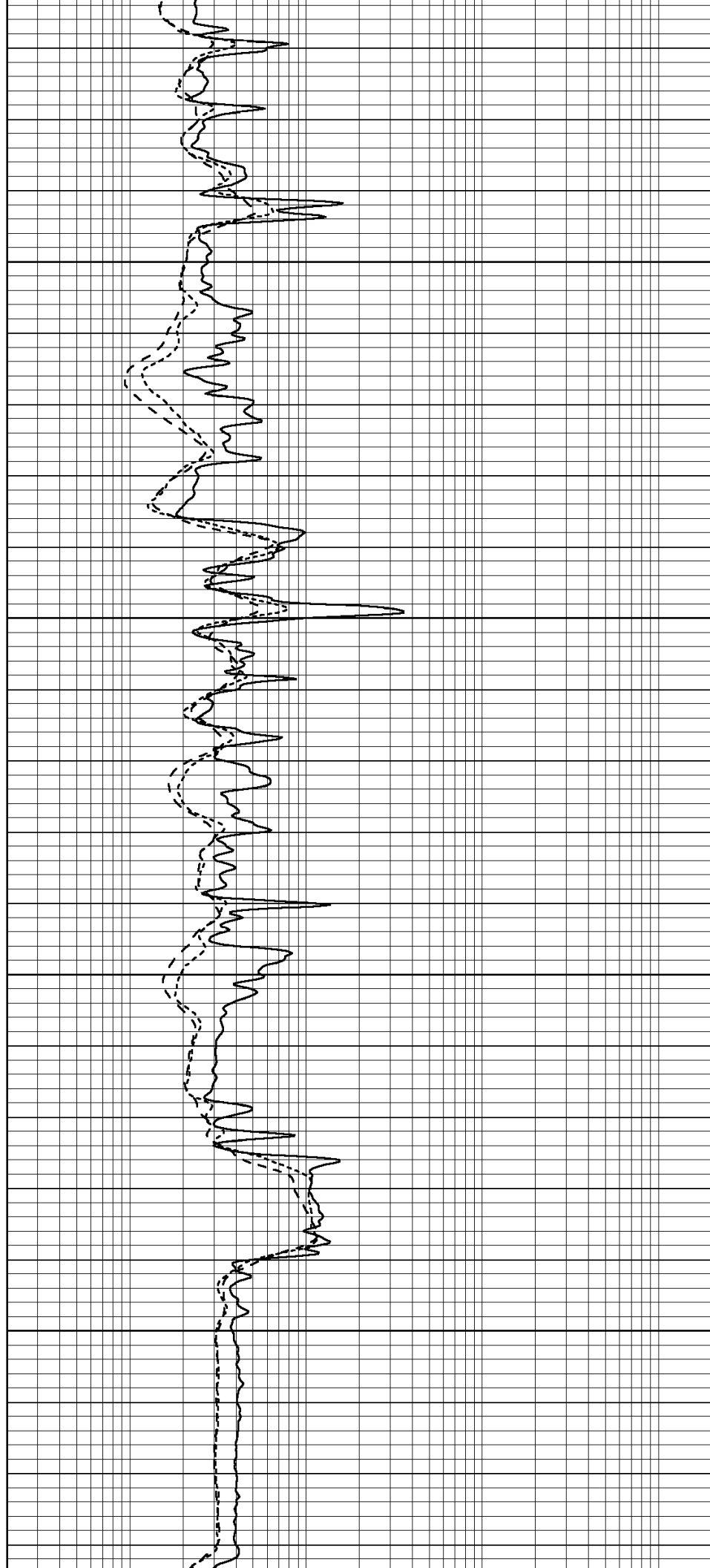


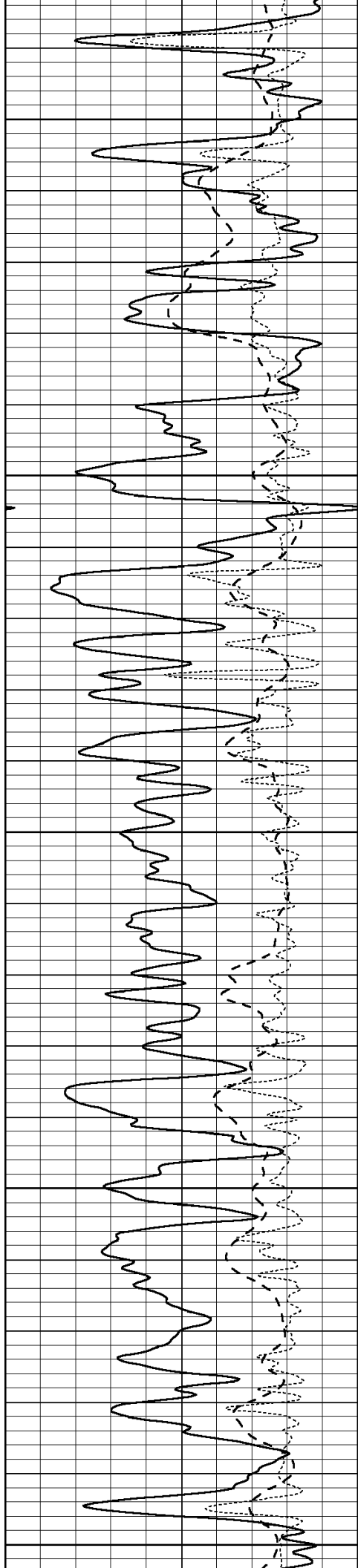
2200

2250

300

350





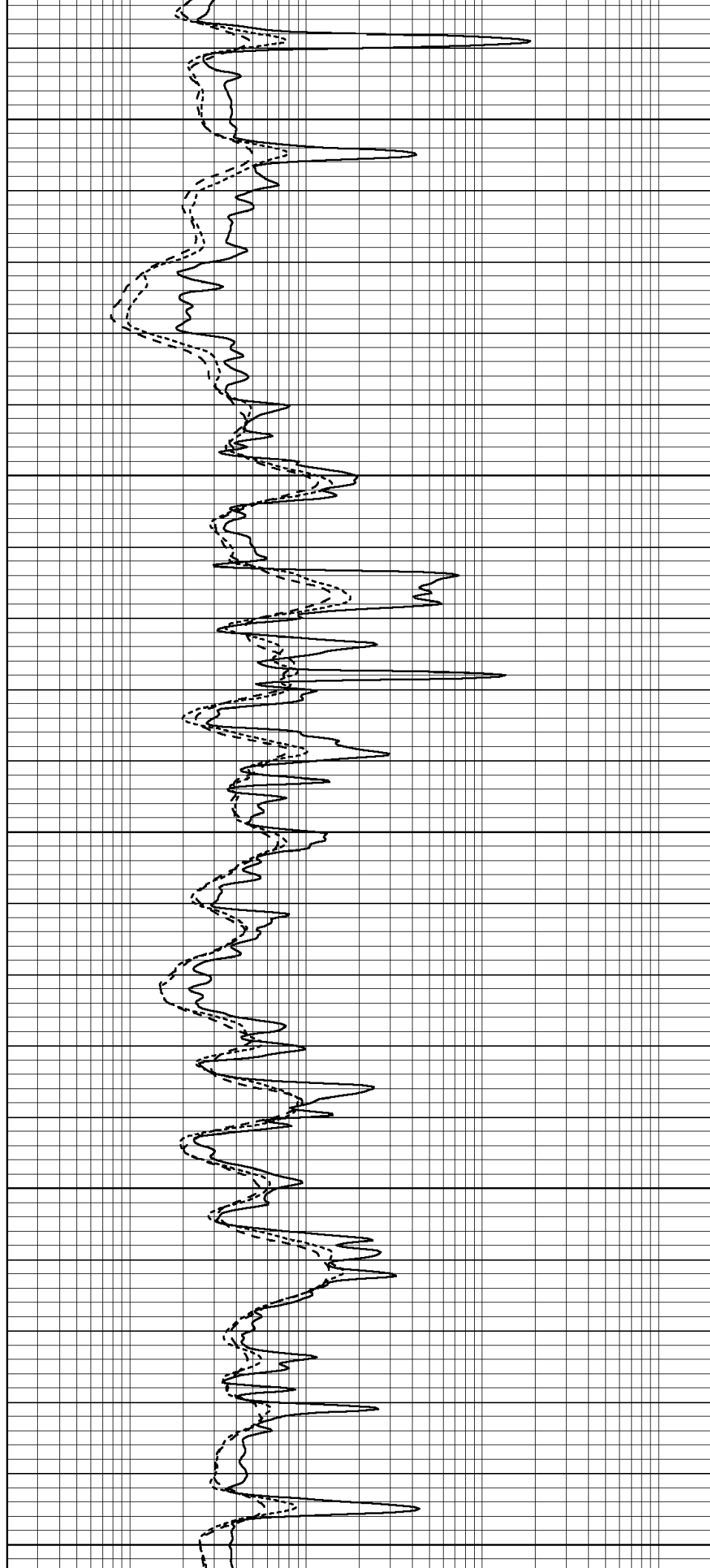
2400

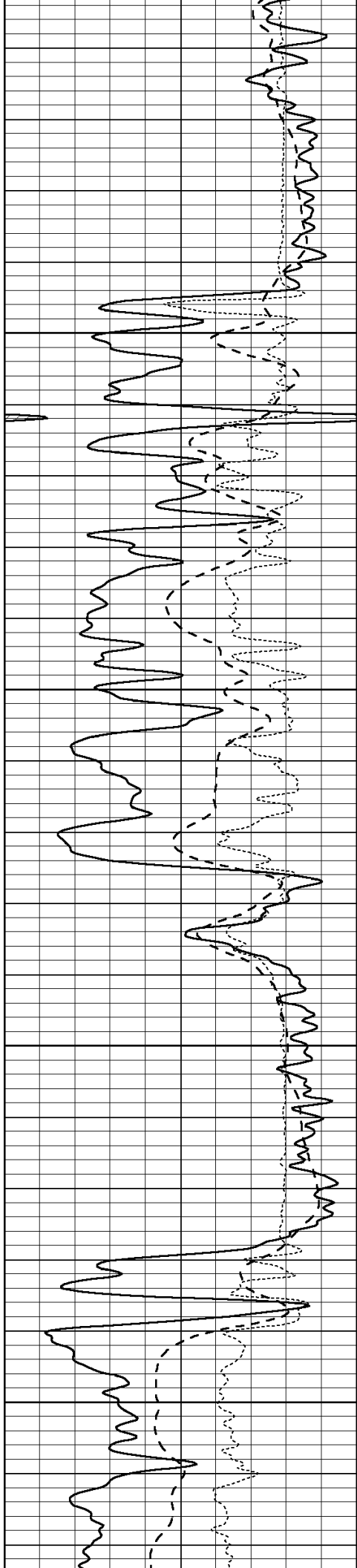
2450

2500

2550

2600



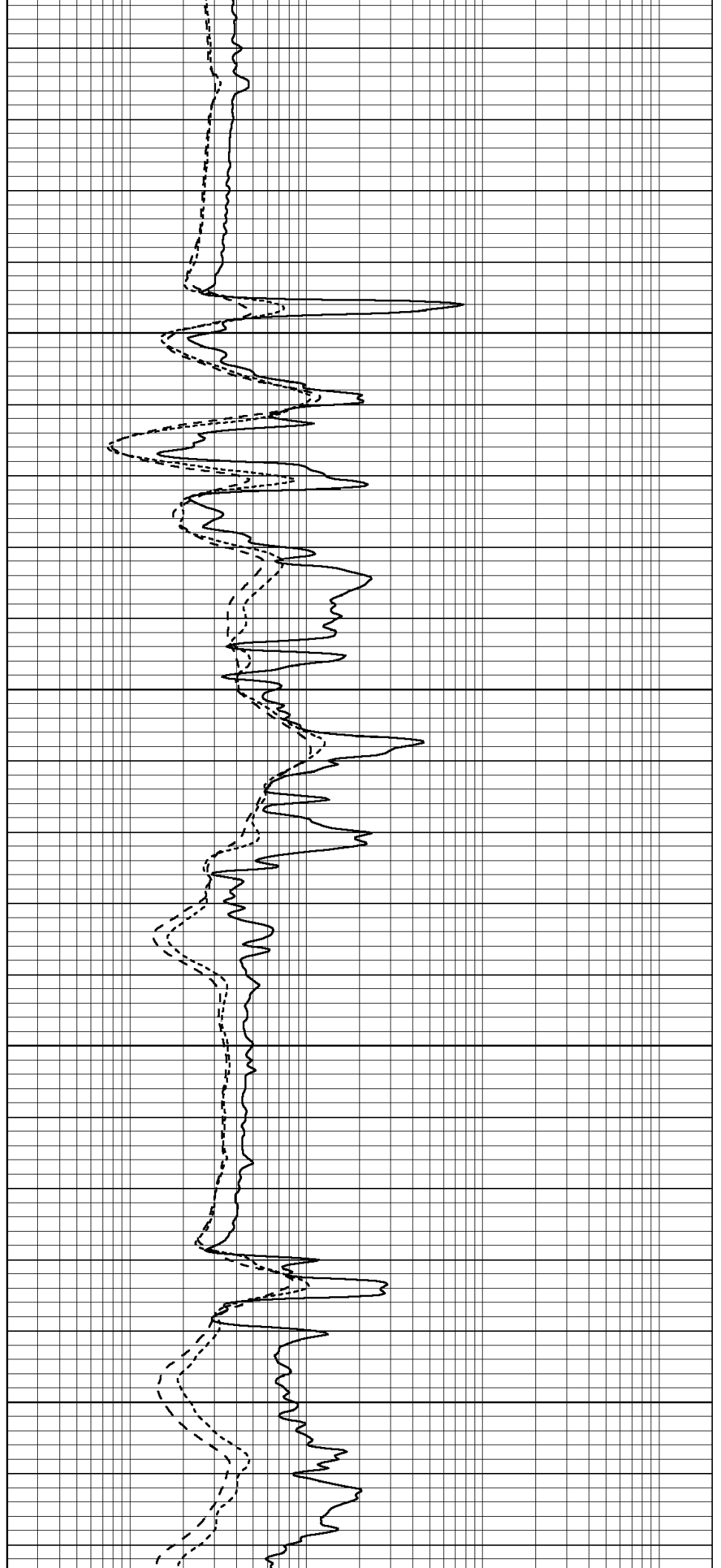


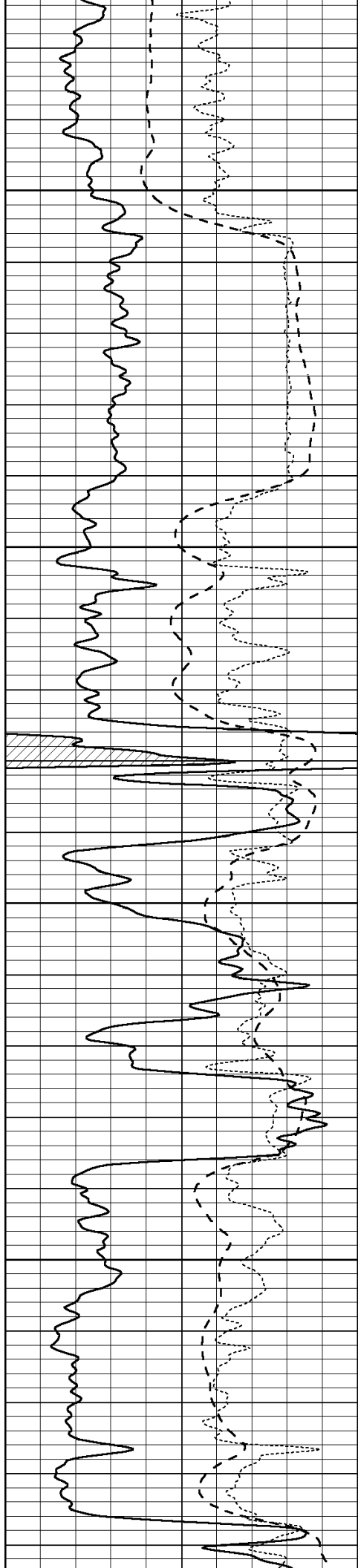
2650

2700

2750

2800



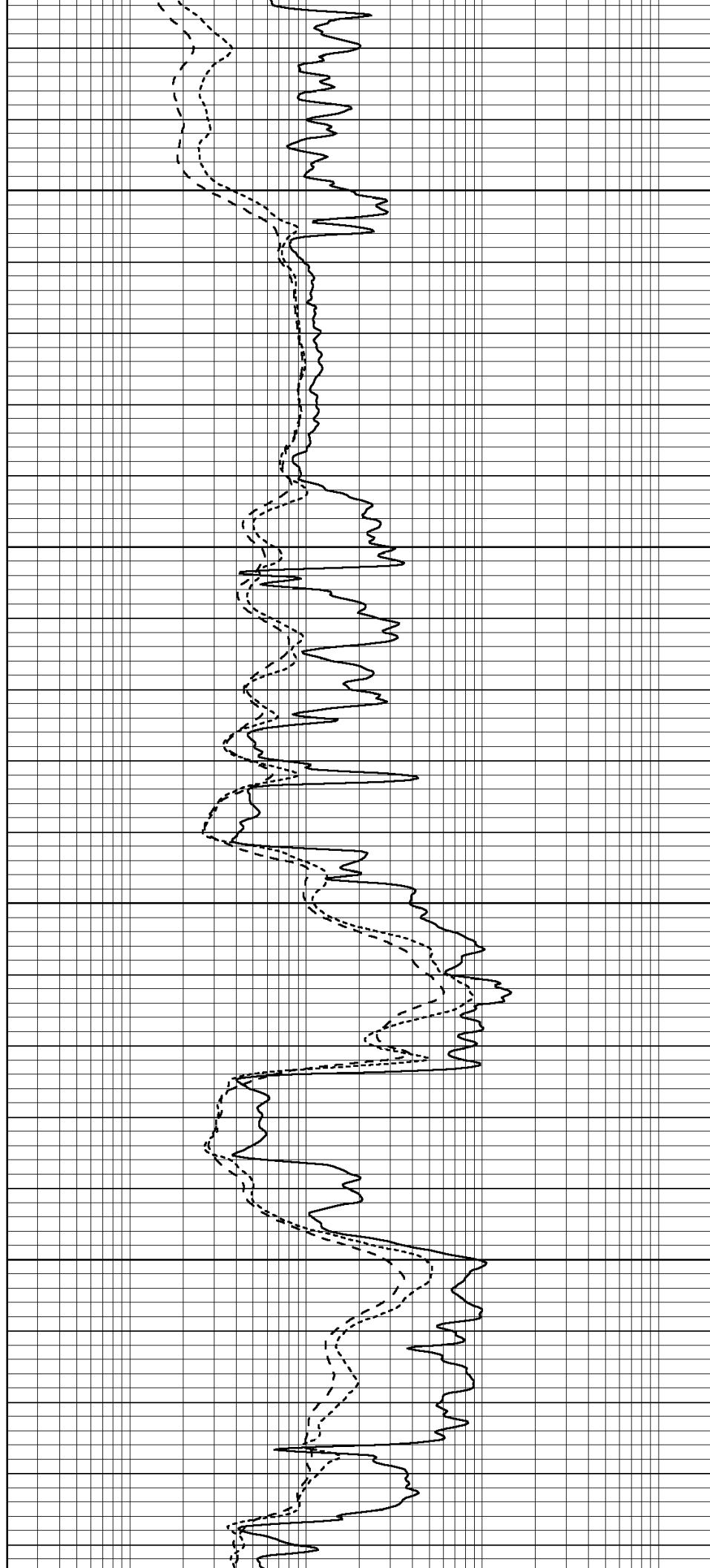


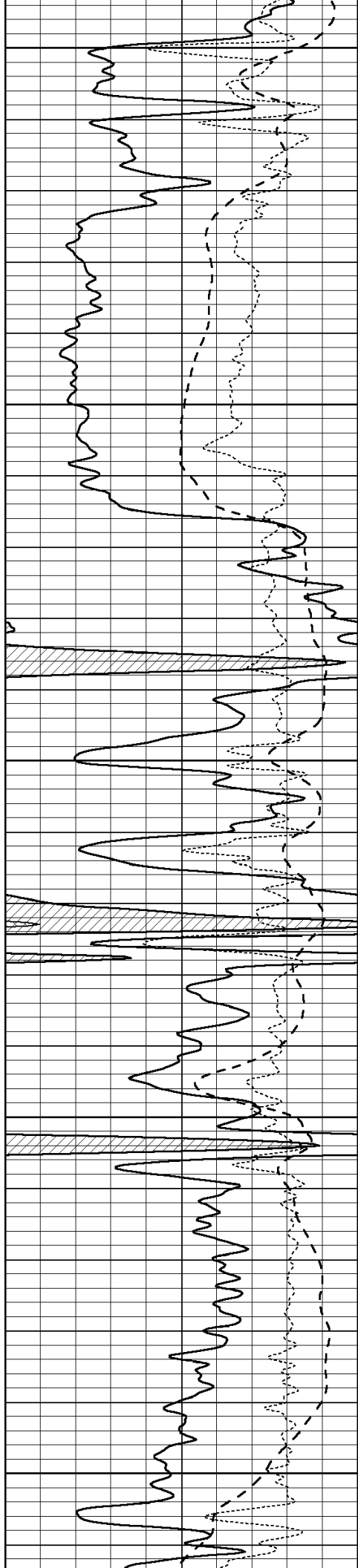
2850

2900

2950

3000





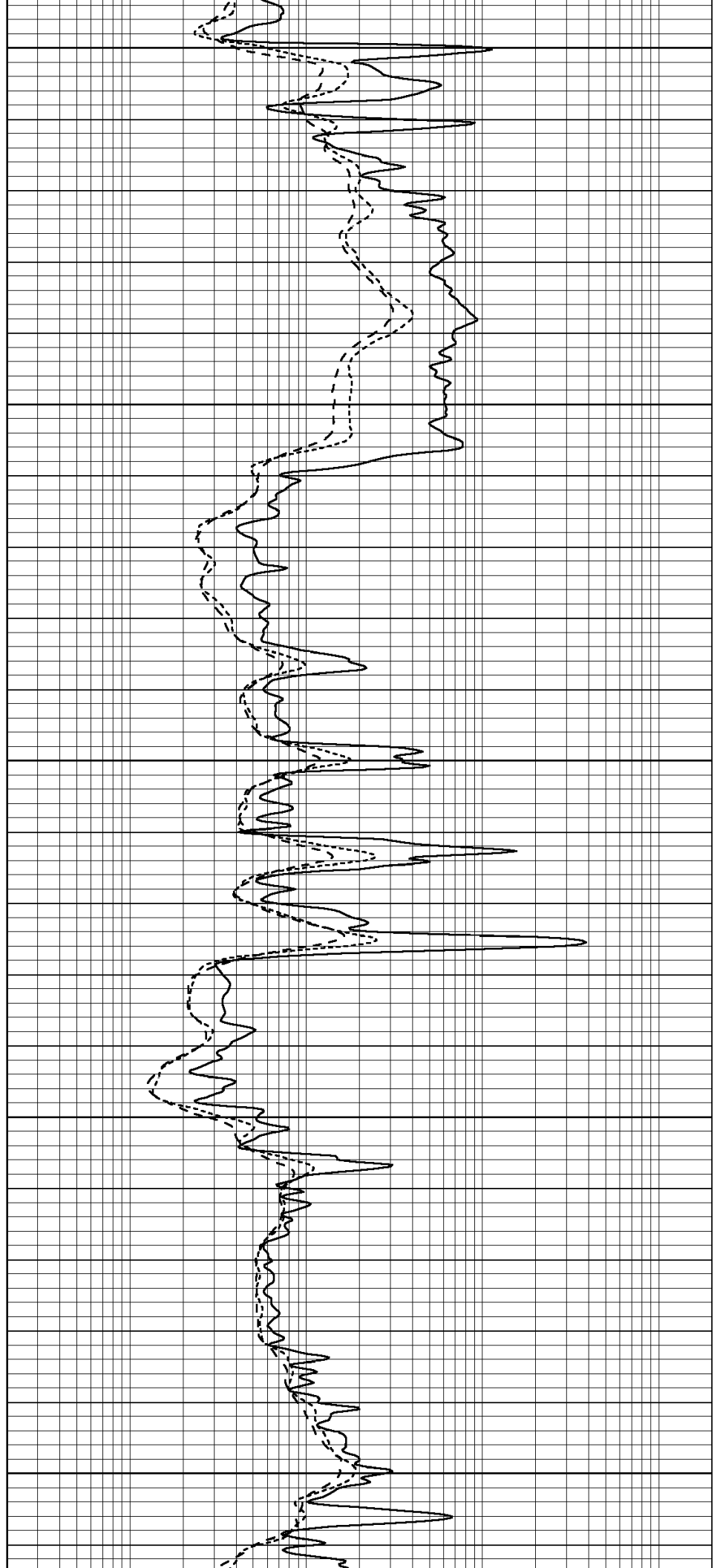
3050

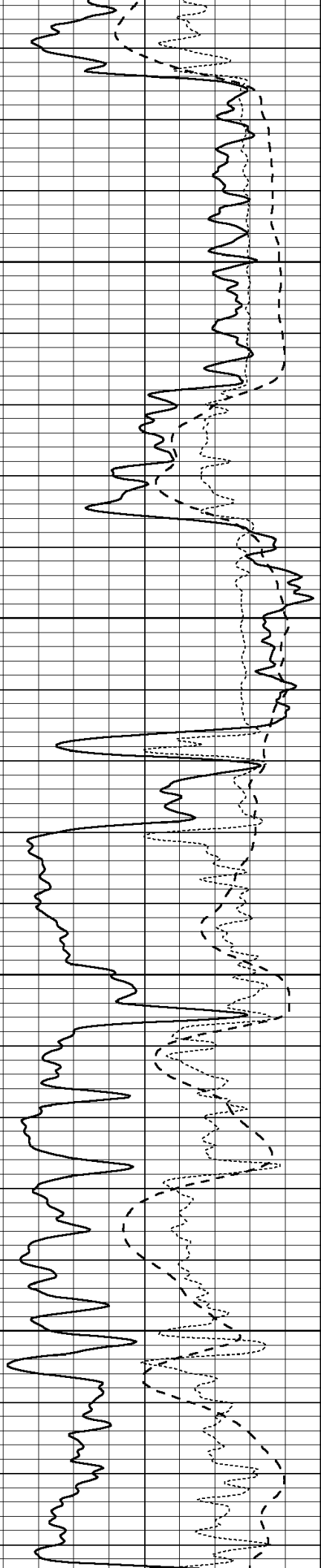
3100

3150

3200

3250



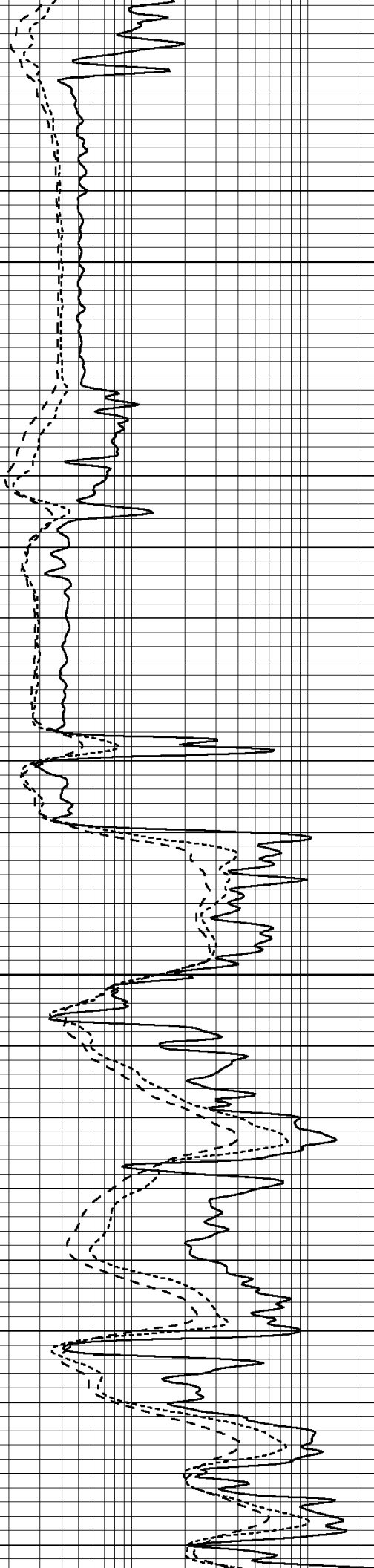


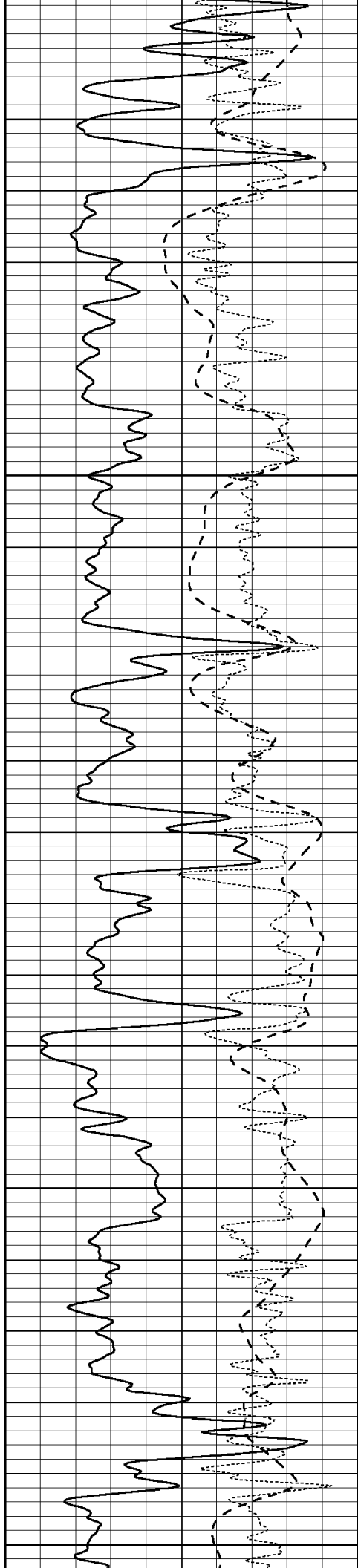
3300

3350

3400

3450





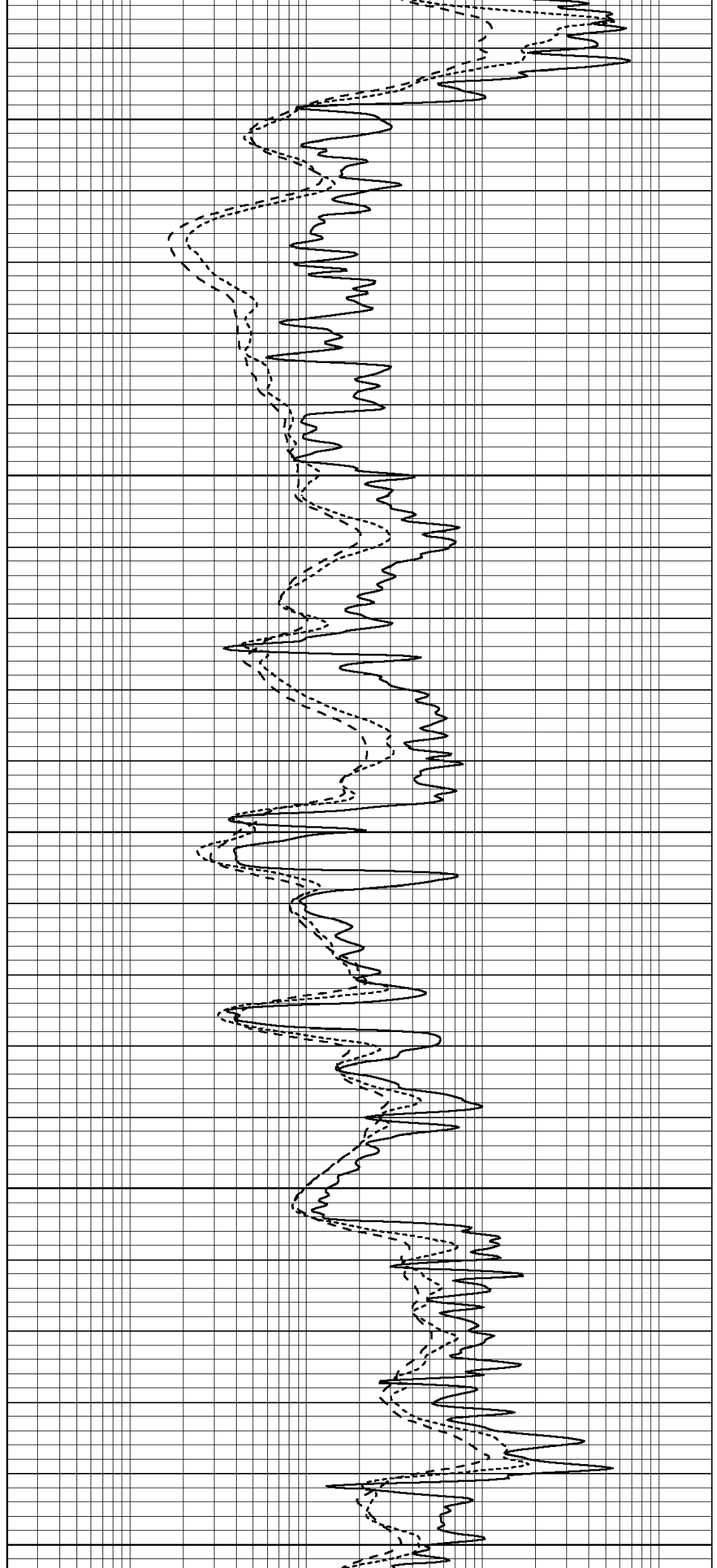
3500

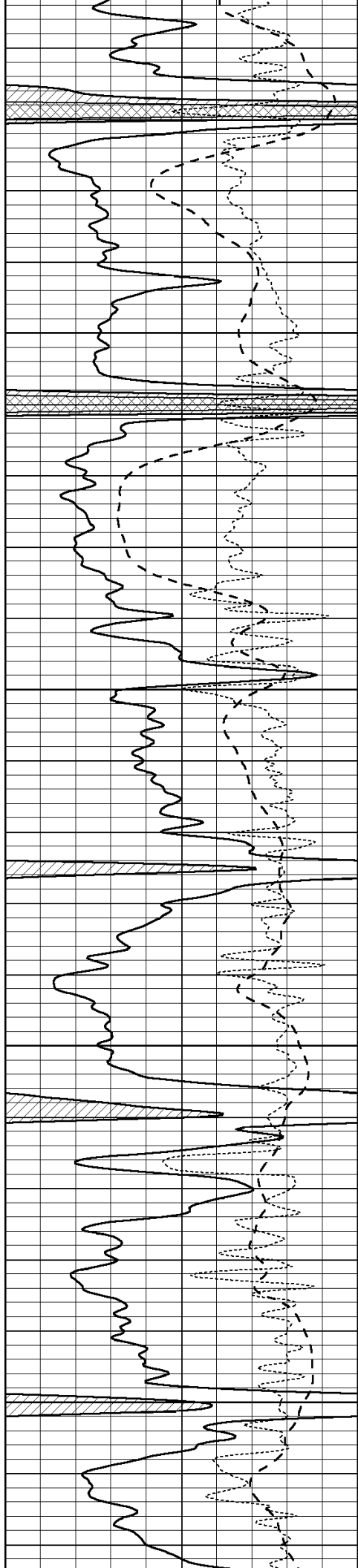
3550

3600

3650

3700



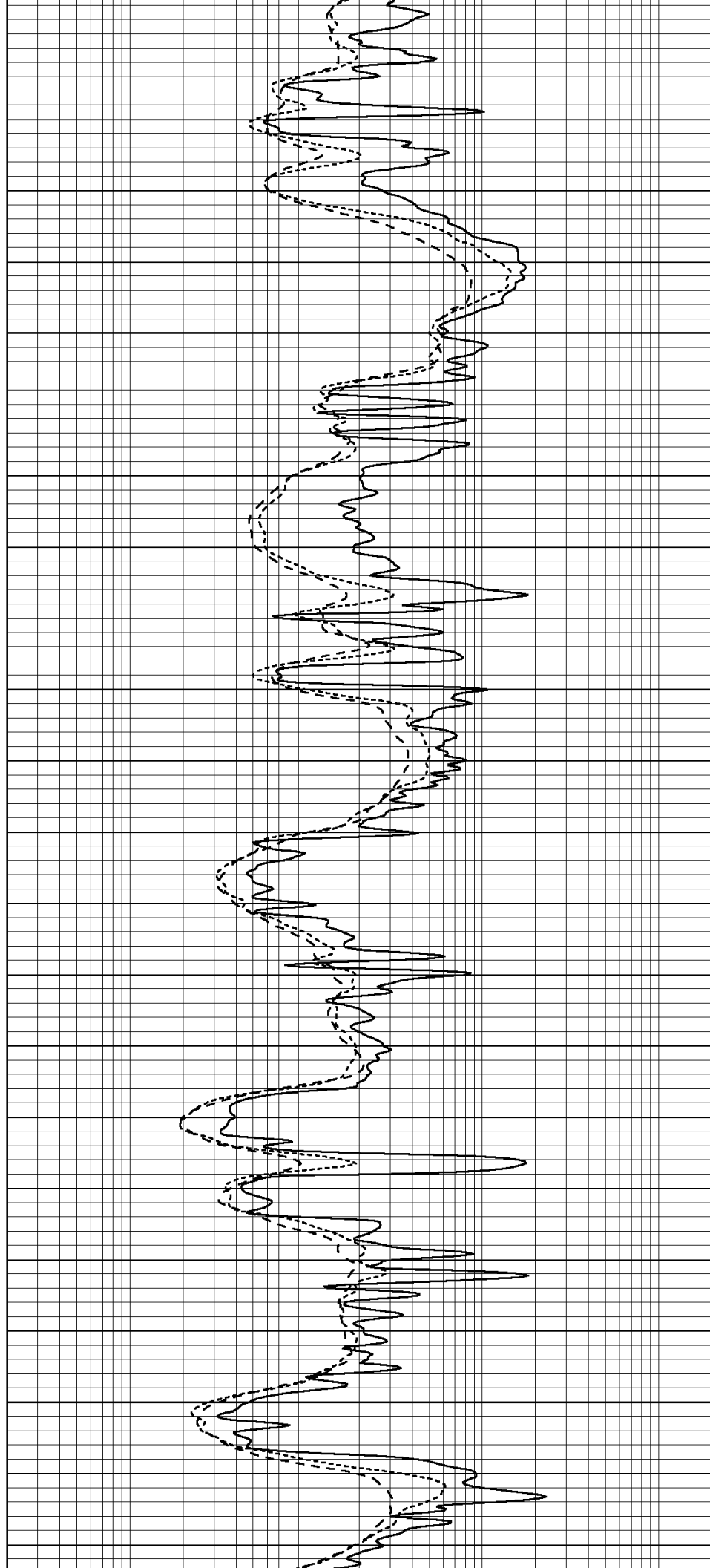


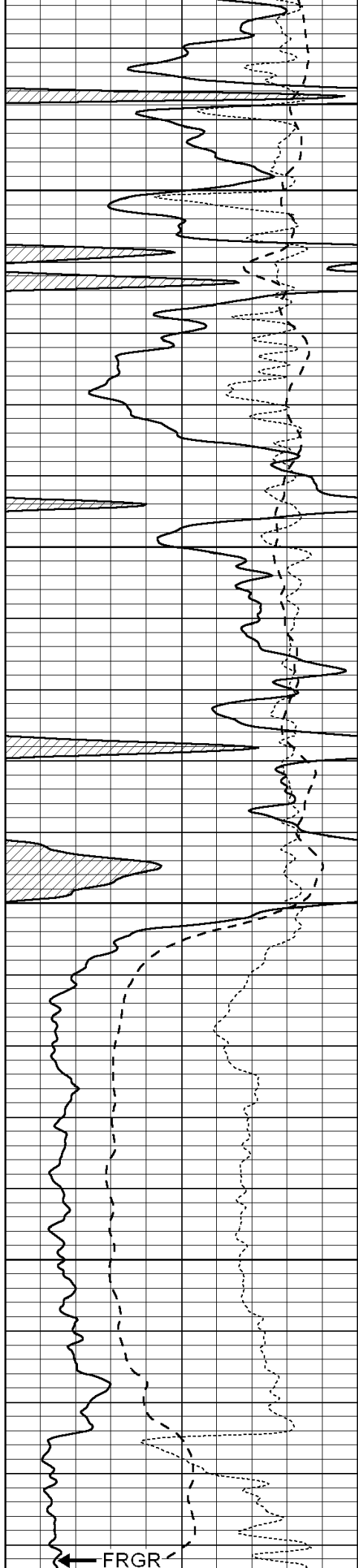
3750

3800

3850

3900





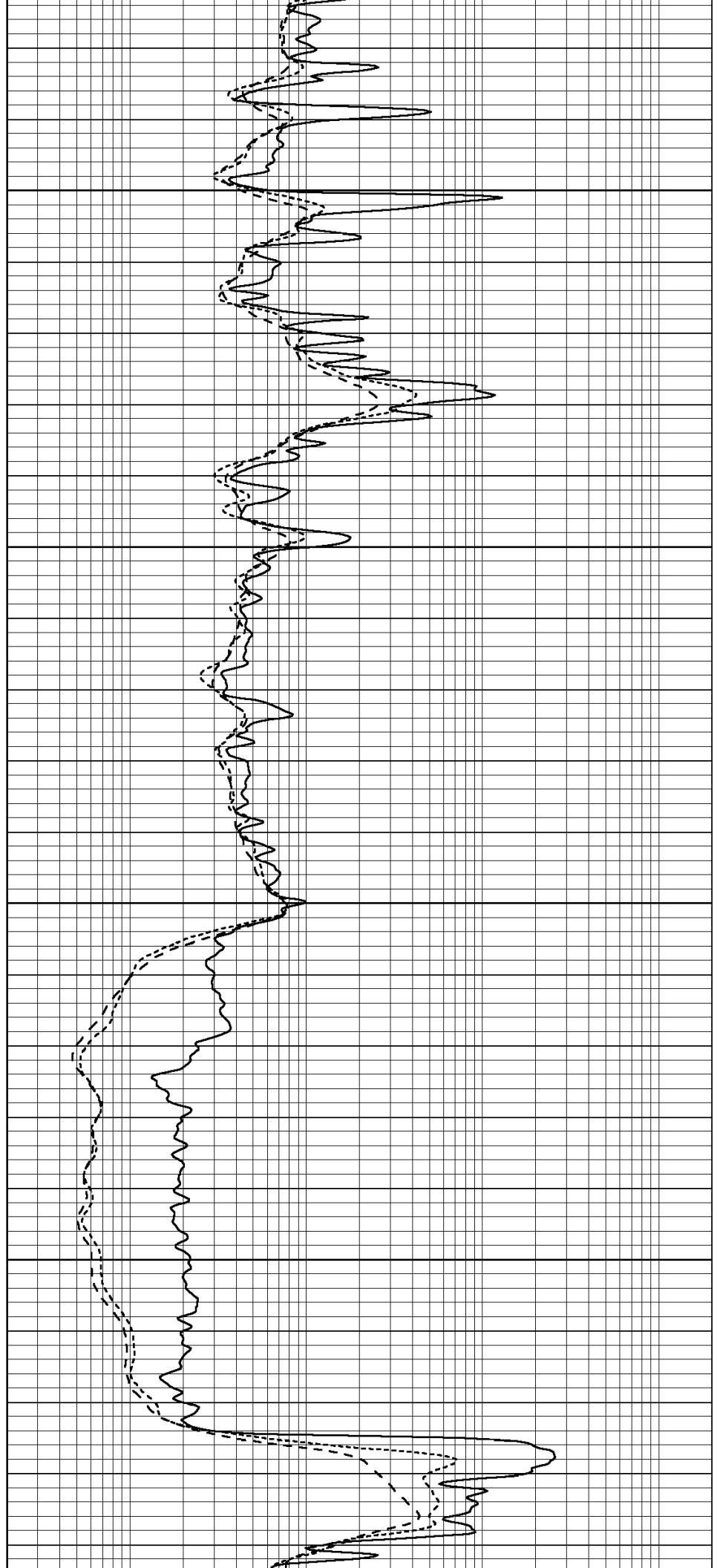
3950

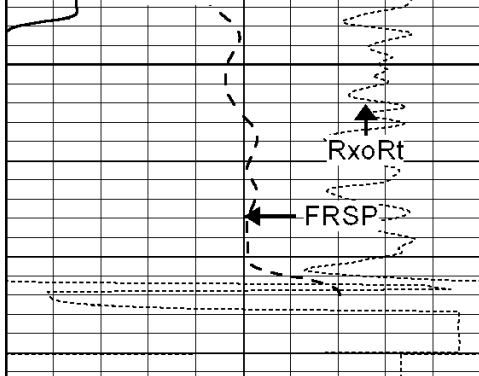
4000

4050

4100

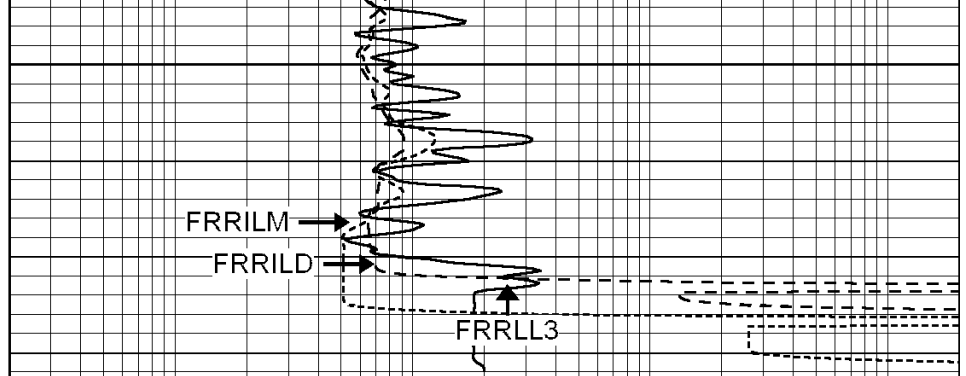
FRGR





4150
LTD 4176

0	GAMMA RAY (GAPI)	150
-100	SP (mV)	100
-250	Rxo/Rt	50



0.2	SHALLOW GUARD (Ohm-m)	2000
0.2	MEDIUM INDUCTION (Ohm-m)	2000
0.2	DEEP INDUCTION (Ohm-m)	2000



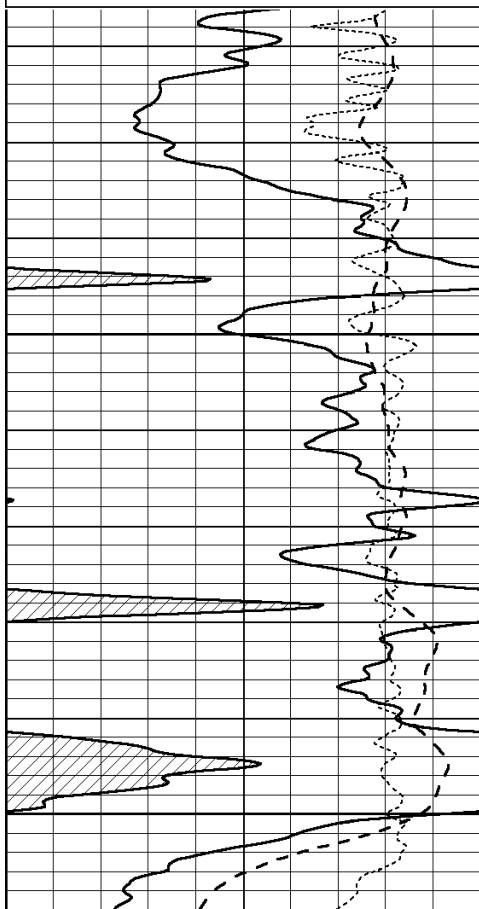
SUPERIOR
Hays,
Kansas

REPEAT SECTION

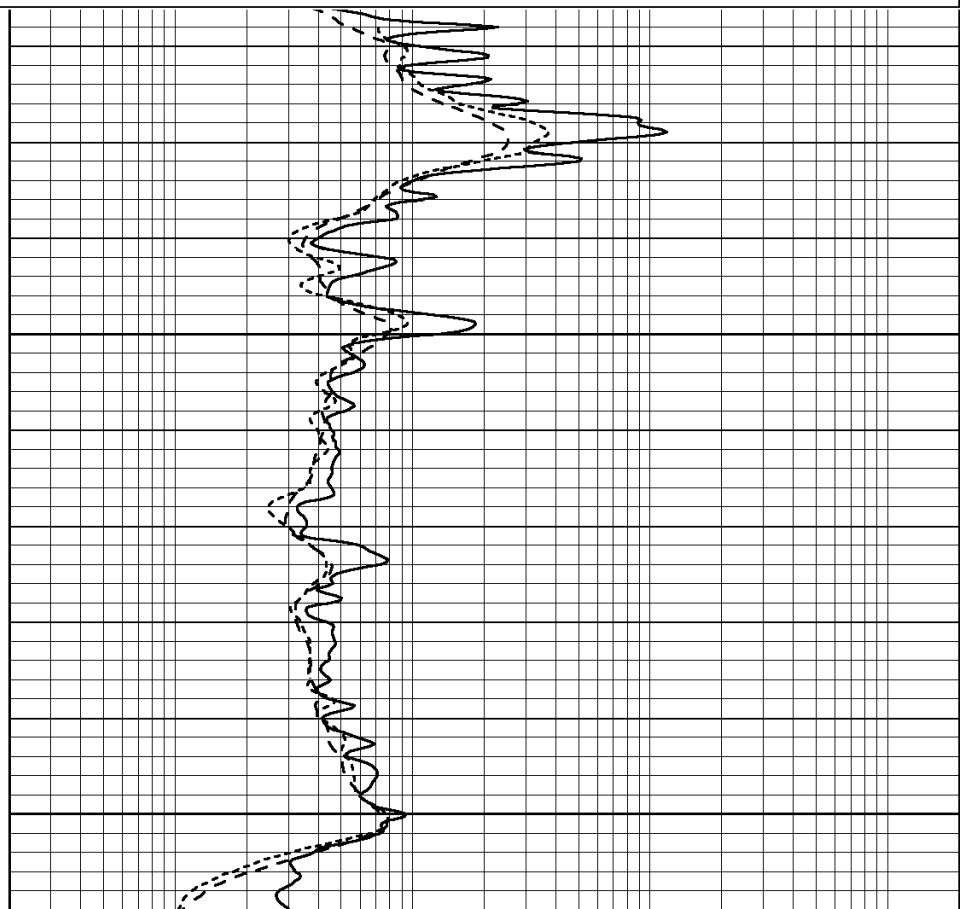
Database File: 004656ddn.db
 Dataset Pathname: pass2.1
 Presentation Format: _dil
 Dataset Creation: Tue Dec 08 14:05:22 2009 by Calc Open-Cased 090629
 Charted by: Depth in Feet scaled 1:240

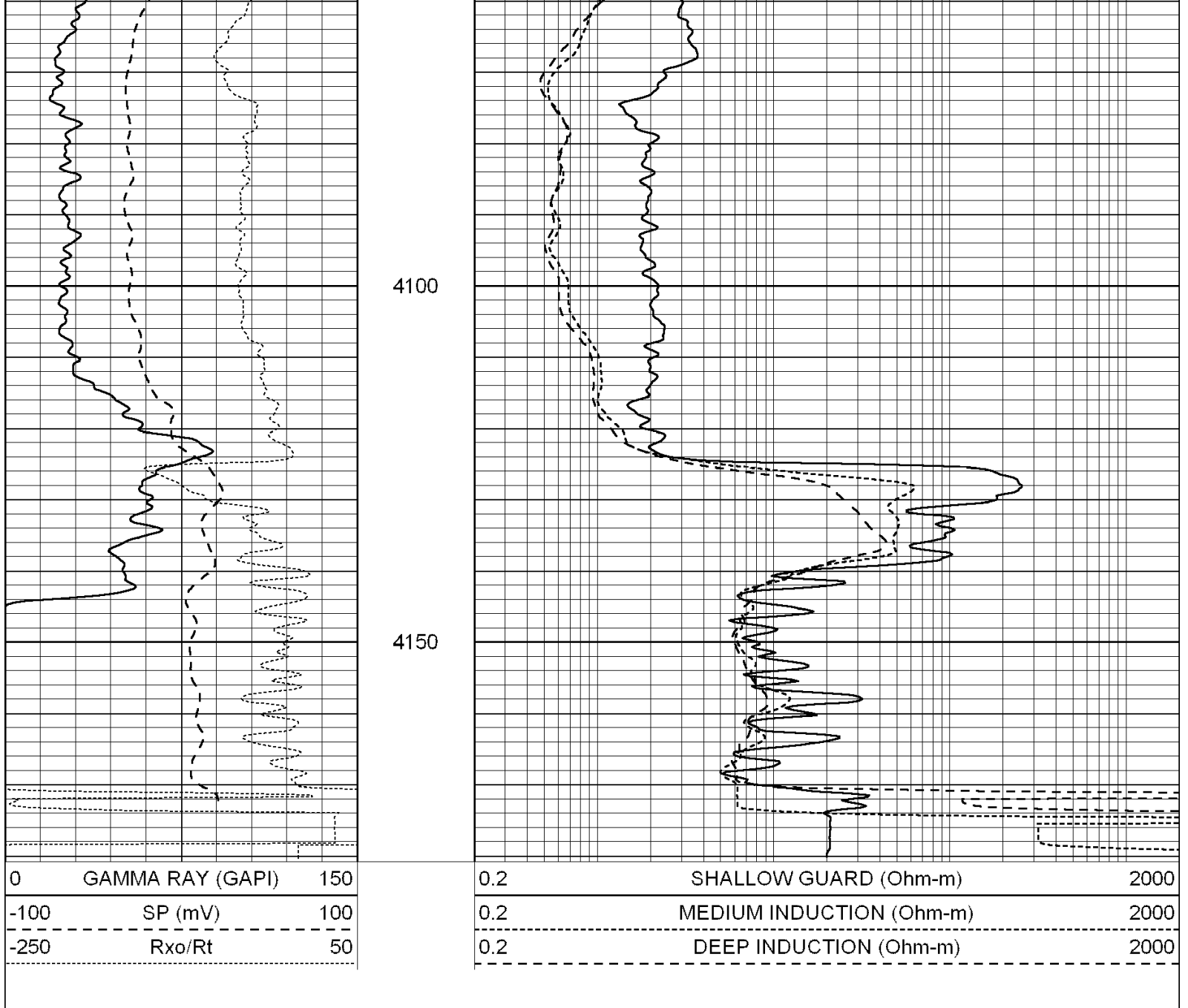
0	GAMMA RAY (GAPI)	150
-100	SP (mV)	100
-250	Rxo/Rt	50

0.2	SHALLOW GUARD (Ohm-m)	2000
0.2	MEDIUM INDUCTION (Ohm-m)	2000
0.2	DEEP INDUCTION (Ohm-m)	2000



4000
4050





Calibration Report

Database File: 004656ddn.db
 Dataset Pathname: pass2.1
 Dataset Creation: Tue Dec 08 14:05:22 2009 by Calc Open-Cased 090629

Dual Induction Calibration Report

Serial-Model: PROBE8-DILG
 Surface Cal Performed: Fri Aug 01 06:33:19 2008
 Downhole Cal Performed: Mon Jul 28 11:08:27 2008
 After Survey Verification Performed: Mon Jul 28 11:08:27 2008

Surface Calibration

Loop:	Readings			V	References		Results	
	Air	Loop			Air	Loop	m	b
Deep	0.015	0.648		0.000	400.000	mmho/m	632.616	-9.730
Medium	0.029	0.796		0.000	464.000	mmho/m	605.049	-17.680

Internal:	Zero	Cal		Zero	Cal		m	b
-----------	------	-----	--	------	-----	--	---	---

Deep	0.017	0.657	V	0.000	400.000	mmho/m	625.153	-10.619
Medium	0.016	0.757	V	0.000	464.000	mmho/m	625.992	-9.739

Downhole Calibration								
	Readings			References			Results	
	Zero	Cal		Zero	Cal		m'	b'
Deep	0.000	0.000	mmho/m	2.011	405.777	mmho/m	1.000	0.000
Medium	0.000	0.000	mmho/m	7.590	503.393	mmho/m	1.000	0.000
LL3		7.500	V		1500.000	Ohm-m		
		0.000	V		20.000	Ohm-m		
		-6.500	V		3800.000	mmho-m		

After Survey Verification								
	Readings			Targets			Results	
	Zero	Cal		Zero	Cal		m'	b'
Deep	0.000	0.000	mmho/m	0.000	0.000	mmho/m	0.000	0.000
Medium	0.000	0.000	mmho/m	0.000	0.000	mmho/m	0.000	0.000
LL3		1.000	Ohm-m		1.000	Ohm-m		
		0.000	Ohm-m		0.000	Ohm-m		
		1.000	mmho-m		1.000	mmho-m		

Compensated Density Calibration Report

Serial-Model:	GEAR4-GEARHART
Source / Verifier:	143 / 143
Master Calibration Performed:	Fri Jan 16 10:06:35 2009

Master Calibration						
	Density		Far Detector	Near Detector		
Magnesium	1.710	g/cc	1358.55	649.93	cps	
Aluminum	2.580	g/cc	325.11	479.52	cps	
Spine Angle = 78.00			Density/Spine Ratio = 0.595			
	Size		Reading			
Small Ring	8.00	in	3.56	V		
Large Ring	14.00	in	6.65	V		

Compensated Neutron Calibration Report

Serial Number:	5I
Tool Model:	G

CALIBRATION						
Detector	Readings		Target	Normalization		
Short Space	1.00	cps	1.00	cps	1.0000	
Long Space	1.00	cps	1.00	cps	1.0000	

Gamma Ray Calibration Report

Serial Number:	GR6
Tool Model:	OPEN
Performed:	Tue Nov 10 08:32:36 2009
Calibrator Value:	150.0
Background Reading:	0.0
Calibrator Reading:	276.0
Sensitivity:	0.5535
	GAPI/cps

