



**SUPERIOR
Hays,
Kansas**

**COMPENSATED
DENSITY/NEUTRON
LOG**

Company	VINCENT OIL CORPORATION	Location:	API # : 15-095-22198-00-00	Other Services
Well	WILSON # 1-14	1650' FSL @ 1650' FWL		DIL
Field	WILDCAT	SW-NE-SW		MEL/SON
County	KINGMAN	SEC 14 TWP 28 RGE 8W		Elevation
State	KANSAS	GROUND LEVEL	Elevation	1609
		Log Measured From	K.B. 1619	
		Drilling Measured From	D.F. 1617	
			G.L. 1609	

Date	12-08-09
Run Number	ONE
Depth Driller	4185
Depth Logger	4176
Bottom Logged Interval	4152
Top Log Interval	1300
Casing Driller	8 5/8" @ 266
Casing Logger	266
Bit Size	7 7/8
Type Fluid In Hole	CHEMICAL MUD
Density / Viscosity	8.9/46
pH / Fluid Loss	9.2/9.5
Source of Sample	FLOWLINE
Rm @ Meas. Temp	.9 @ 22F
Rmf @ Meas. Temp	.675 @ 22F
Rmc @ Meas. Temp	1.44 @ 22F
Source of Rmf / Rmc	MEASUREMENT
Rm @ BHT	.169 @ 117F
Time Circulation Stopped	2 HOURS
Time Logger on Bottom	
Maximum Recorded Temperature	117F
Equipment Number	680
Location	HAYS, KANSAS
Recorded By	JASON CAPPELLUCCI
Witnessed By	M.L. KORPHAGE
	JEFF GRONWEG

<<< Fold Here >>>

All interpretations are opinions based on inferences from electrical or other measurements and we cannot and do not guarantee the accuracy or correctness of any interpretation, and we shall not, except in the case of gross or willful negligence on our part, be liable or responsible for any loss, costs, damages, or expenses incurred or sustained by anyone resulting from any interpretation made by any of our officers, agents or employees. These interpretations are also subject to our general terms and conditions set out in our current Price Schedule.

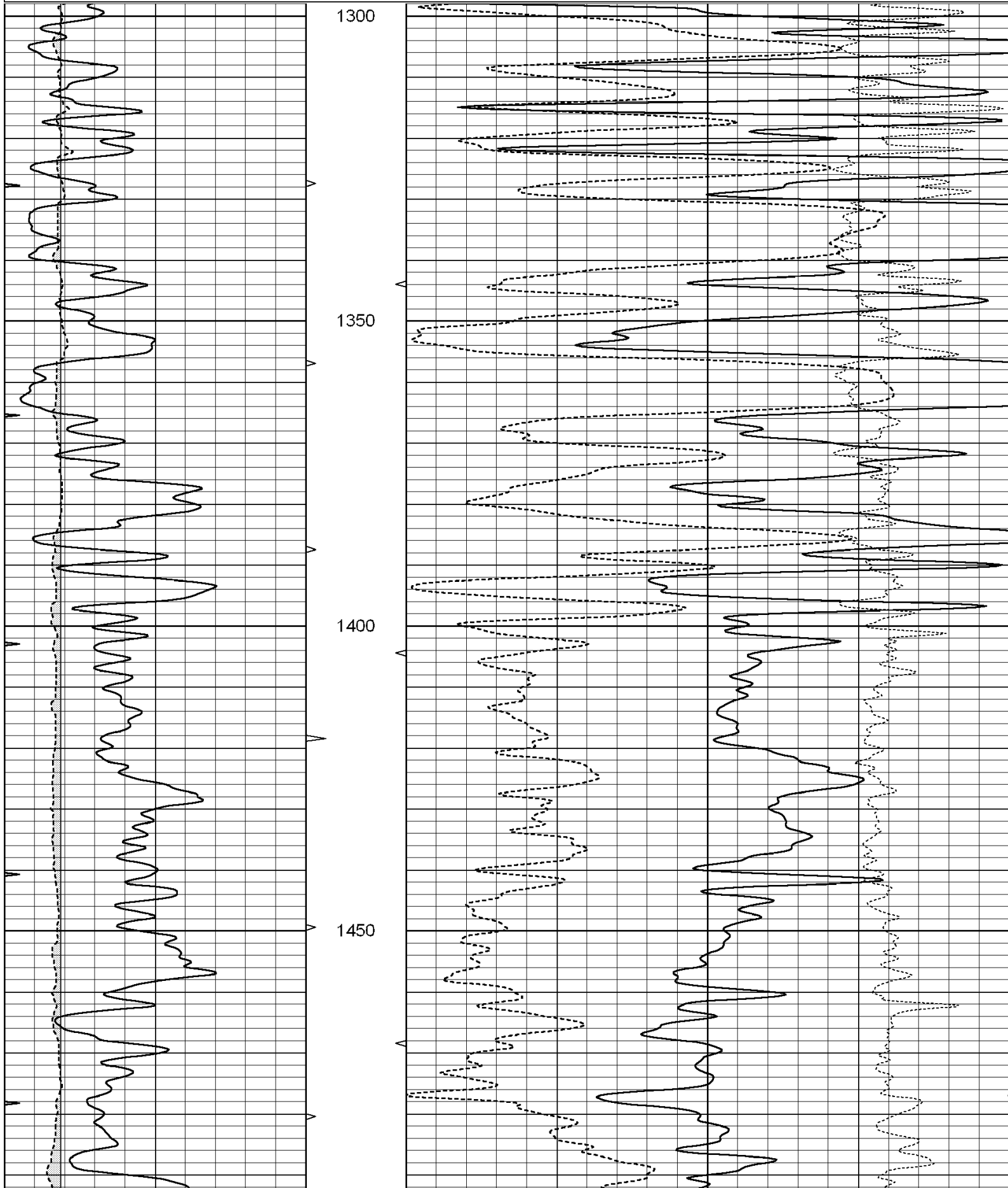
Comments

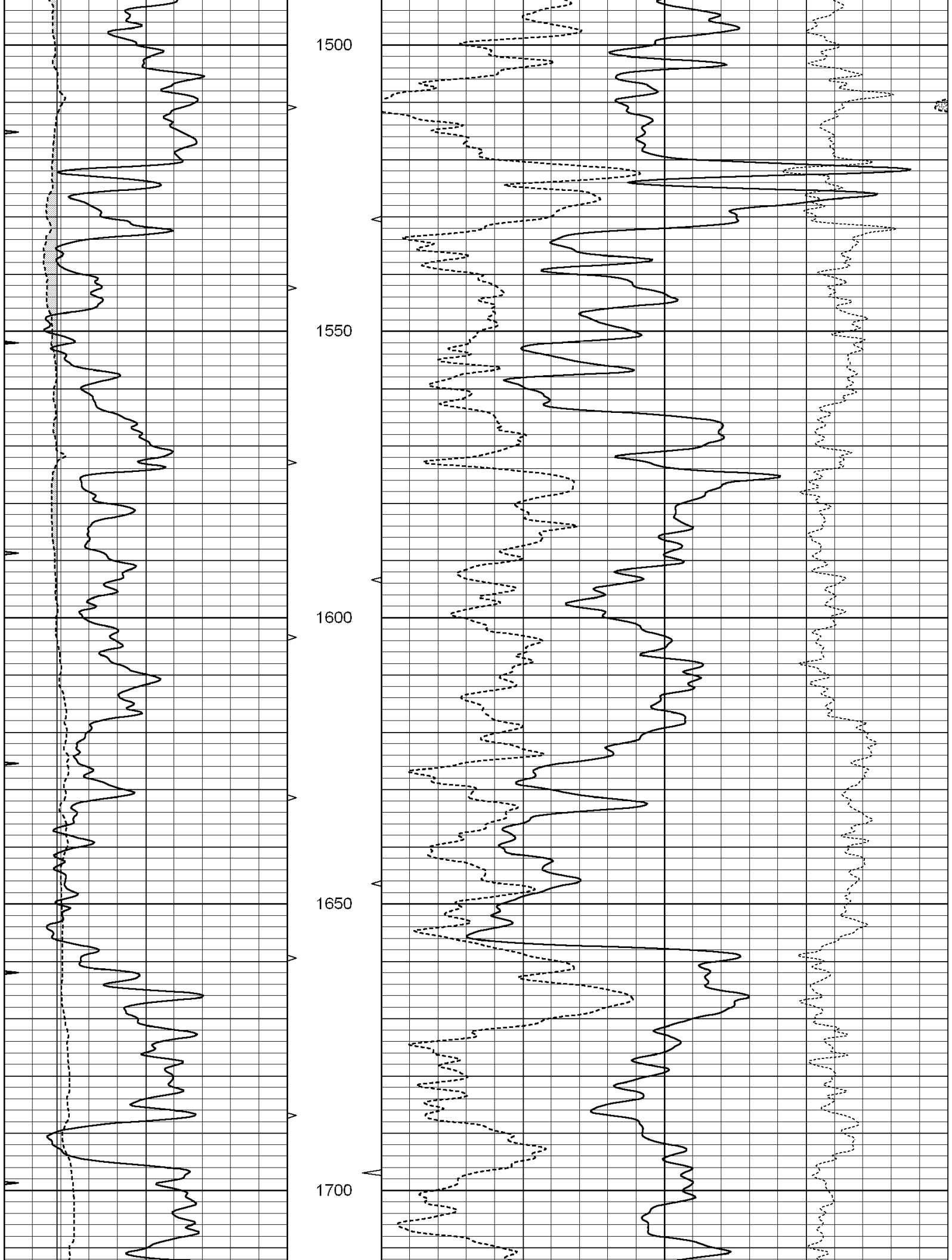
THANK YOU FOR USING SUPERIOR WELL SERVICES HAYS, KANSAS (785) 628-6395
DIRECTIONS
KINGMAN KS., 2 S ON HWY 14 - 2.5W - S INTO

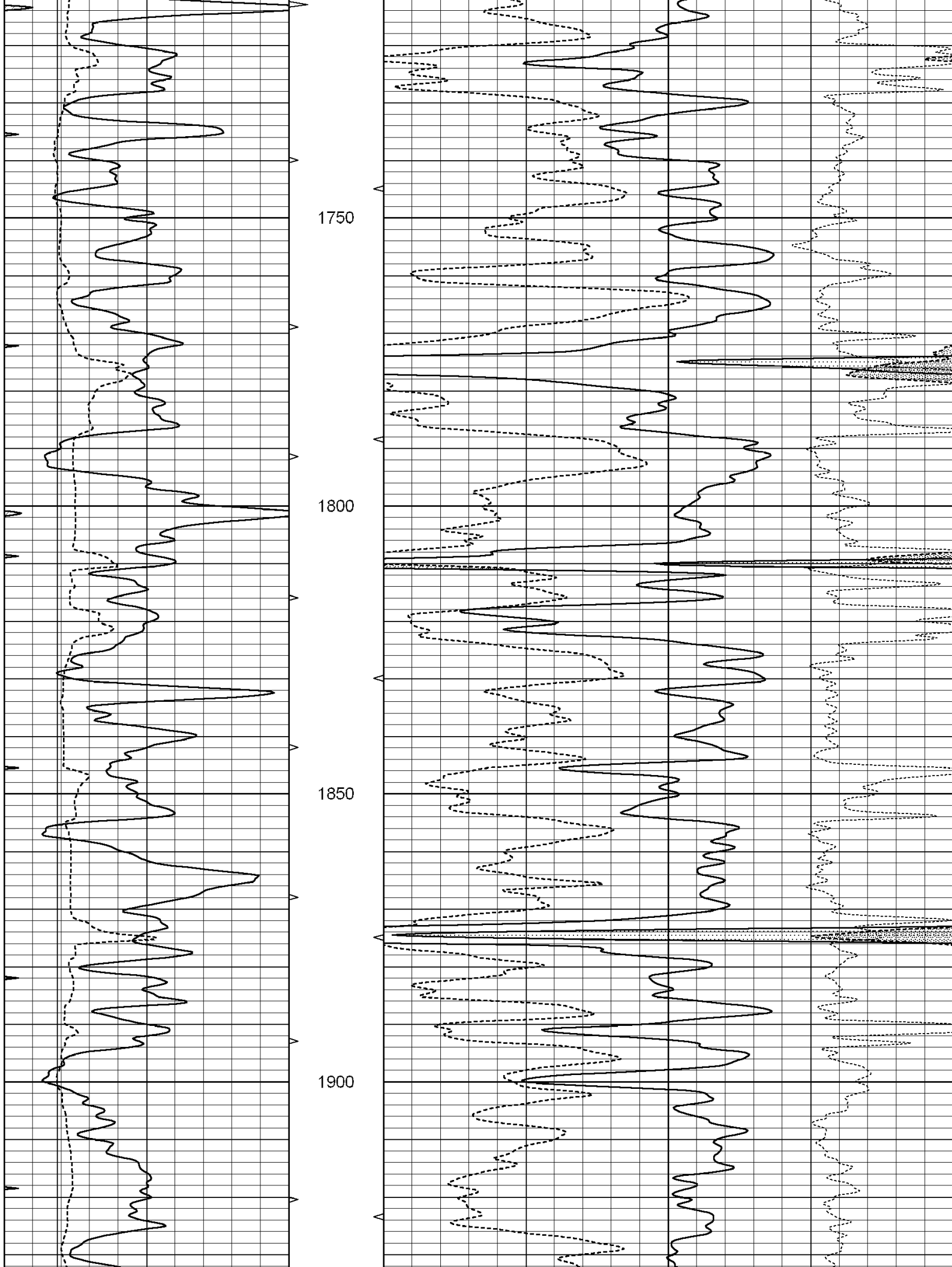
Charted by:

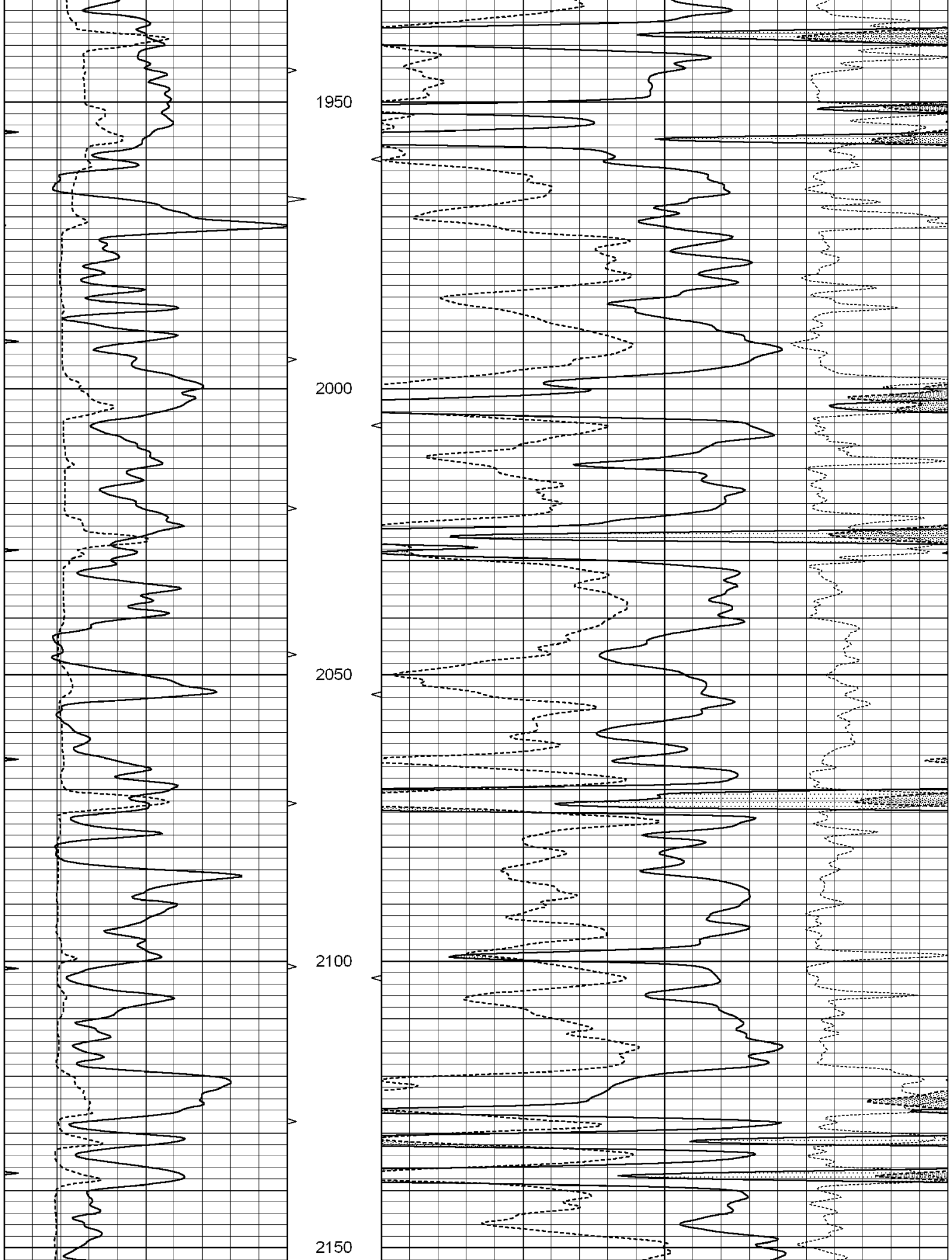
Depth in Feet scaled 1:240

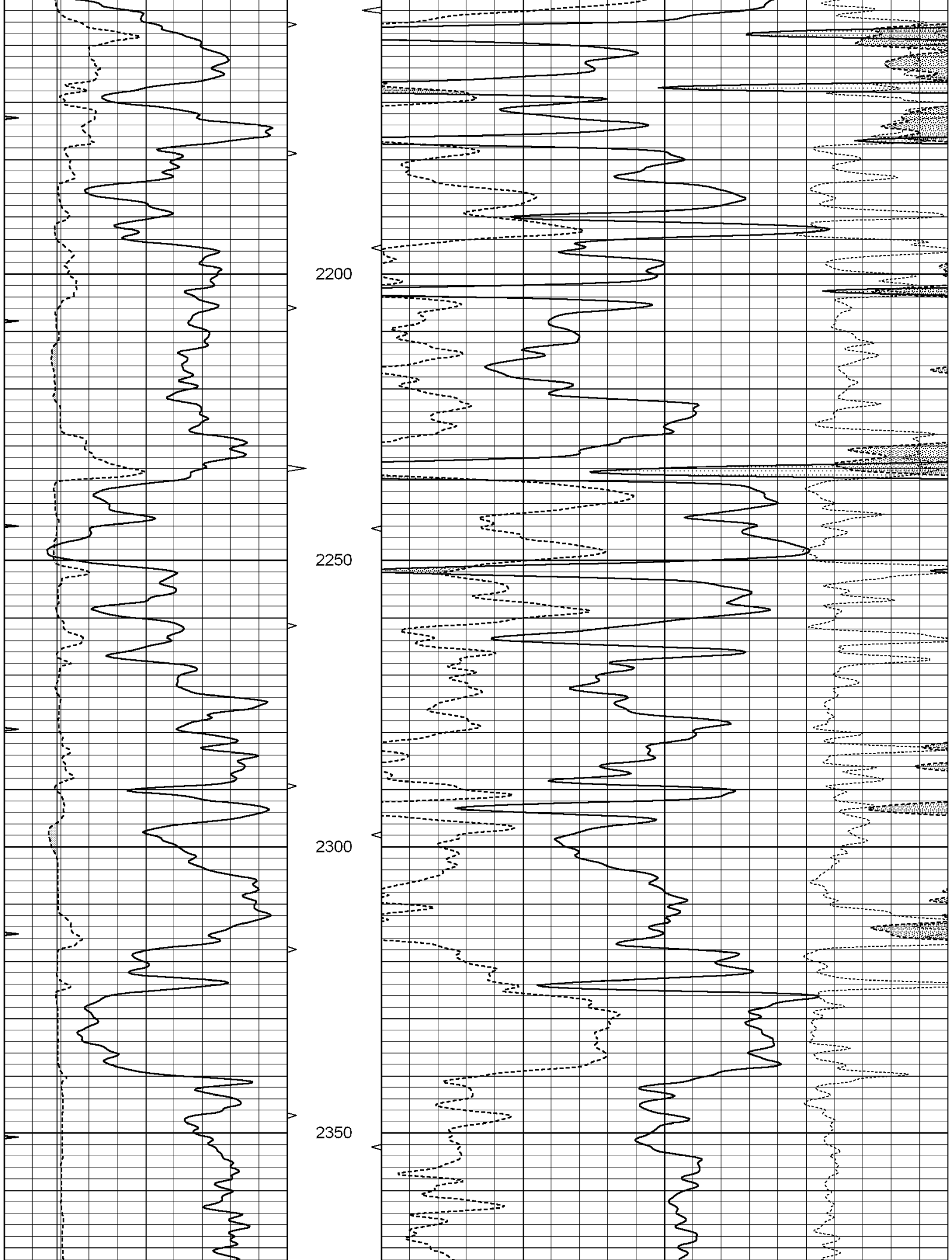
0	GAMMA RAY (GAPI)	150	ABHV	30	COMPENSATED DENSITY (pu)	-10
6	CALIPER (in)	16	10 (ft3) 0	30	COMPENSATED NEUTRON (pu)	-10
0	MINMK	20	TBHV		-0.25 CORRECTION (g/cc)	0.25
			0 (ft3) 10			

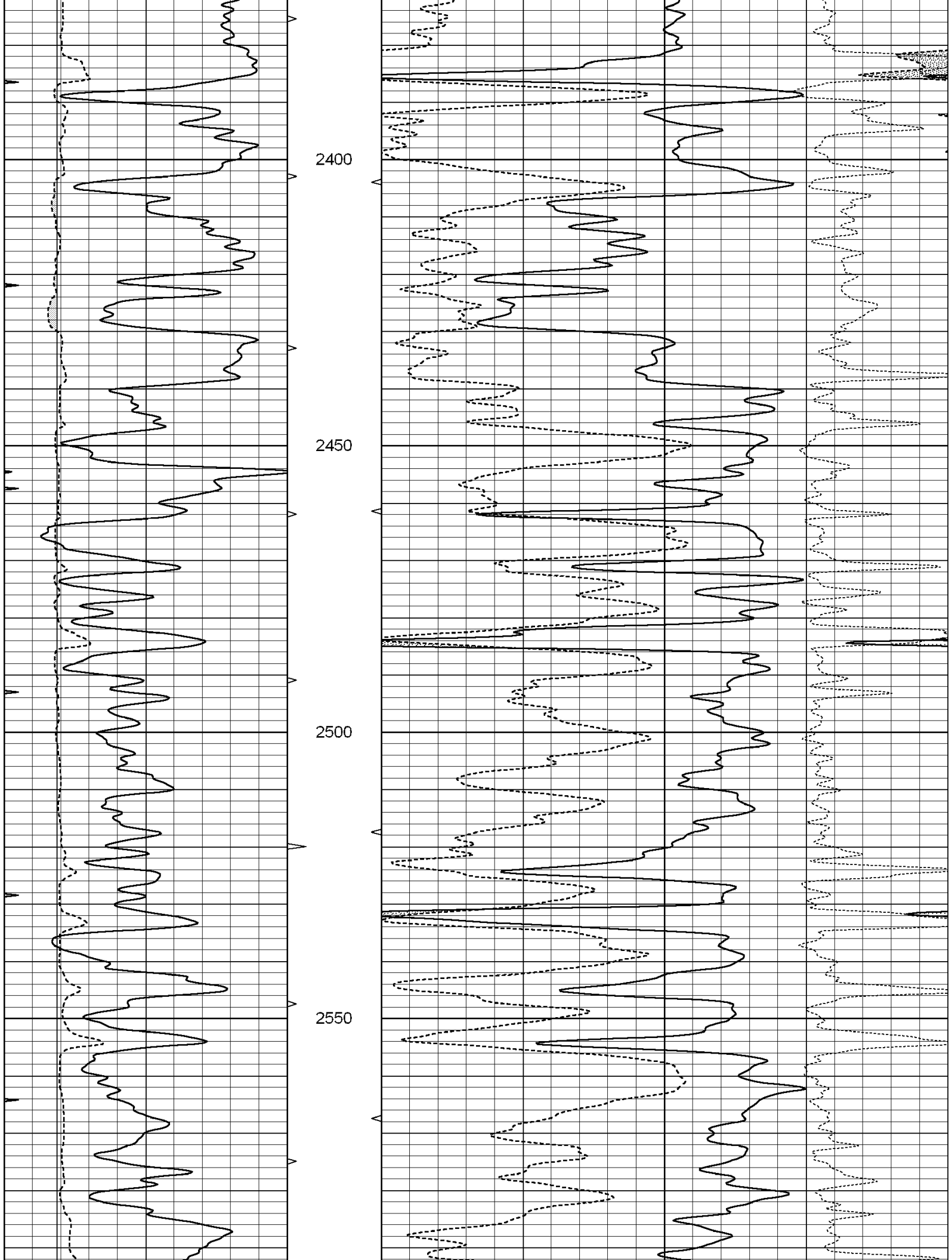


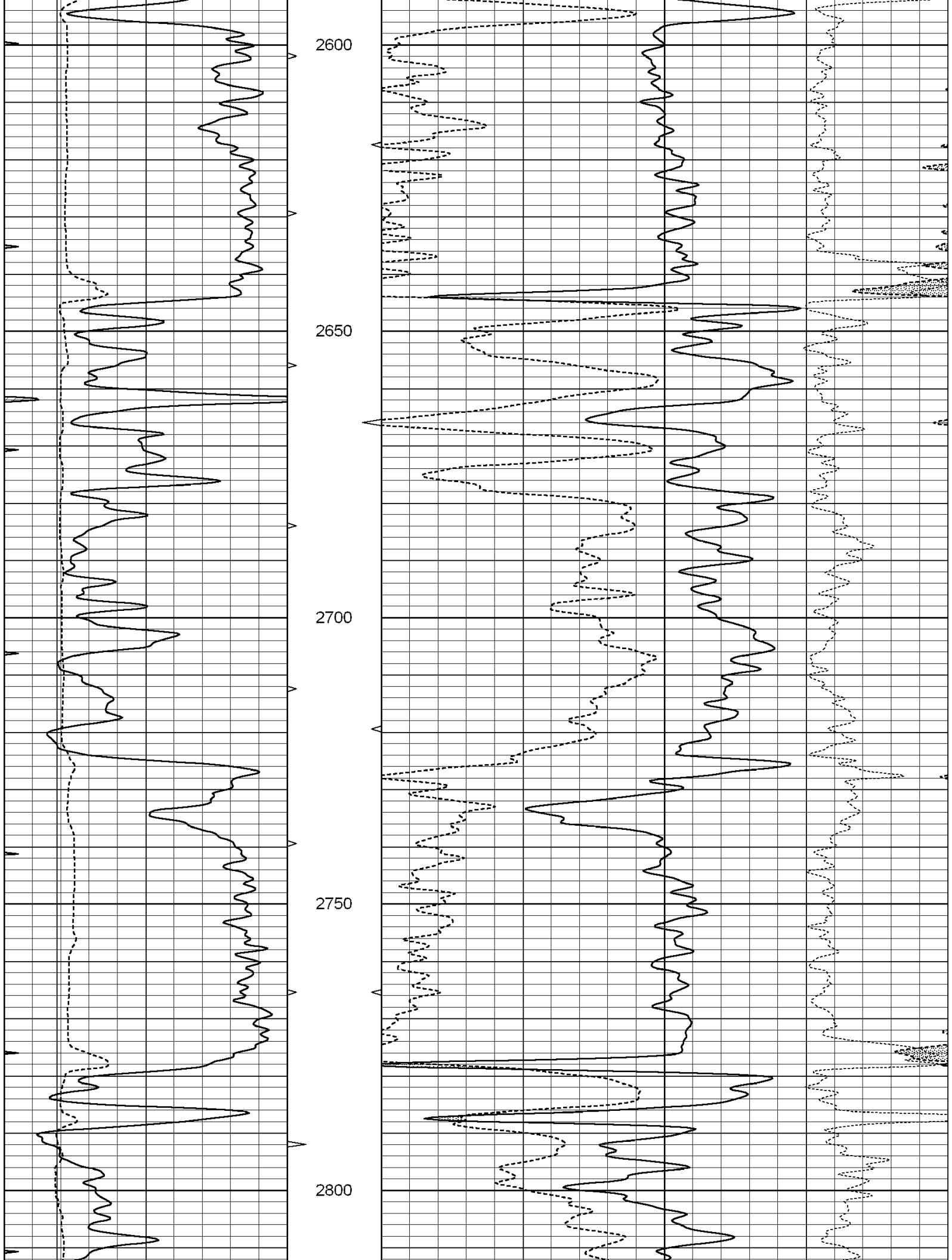


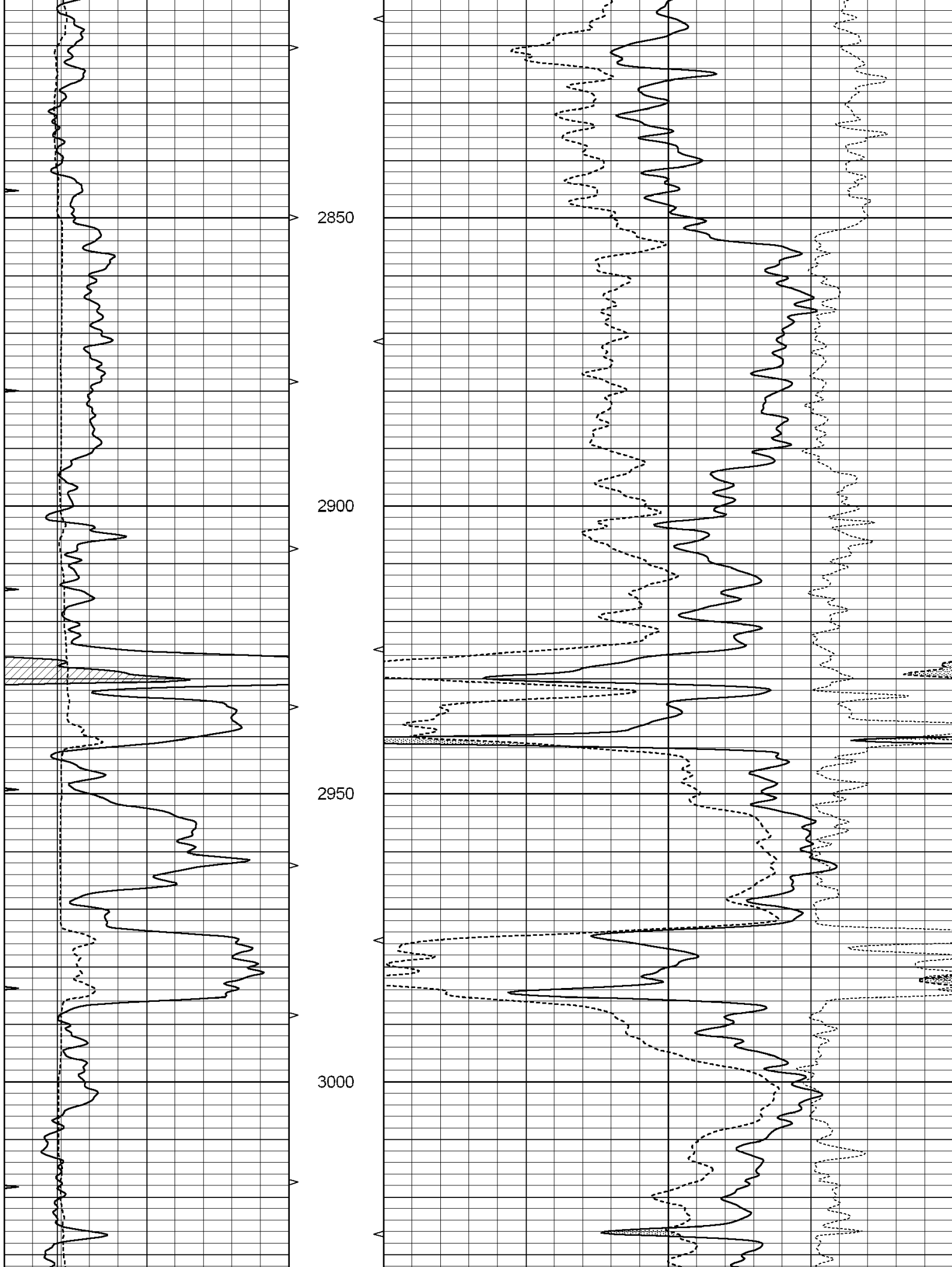


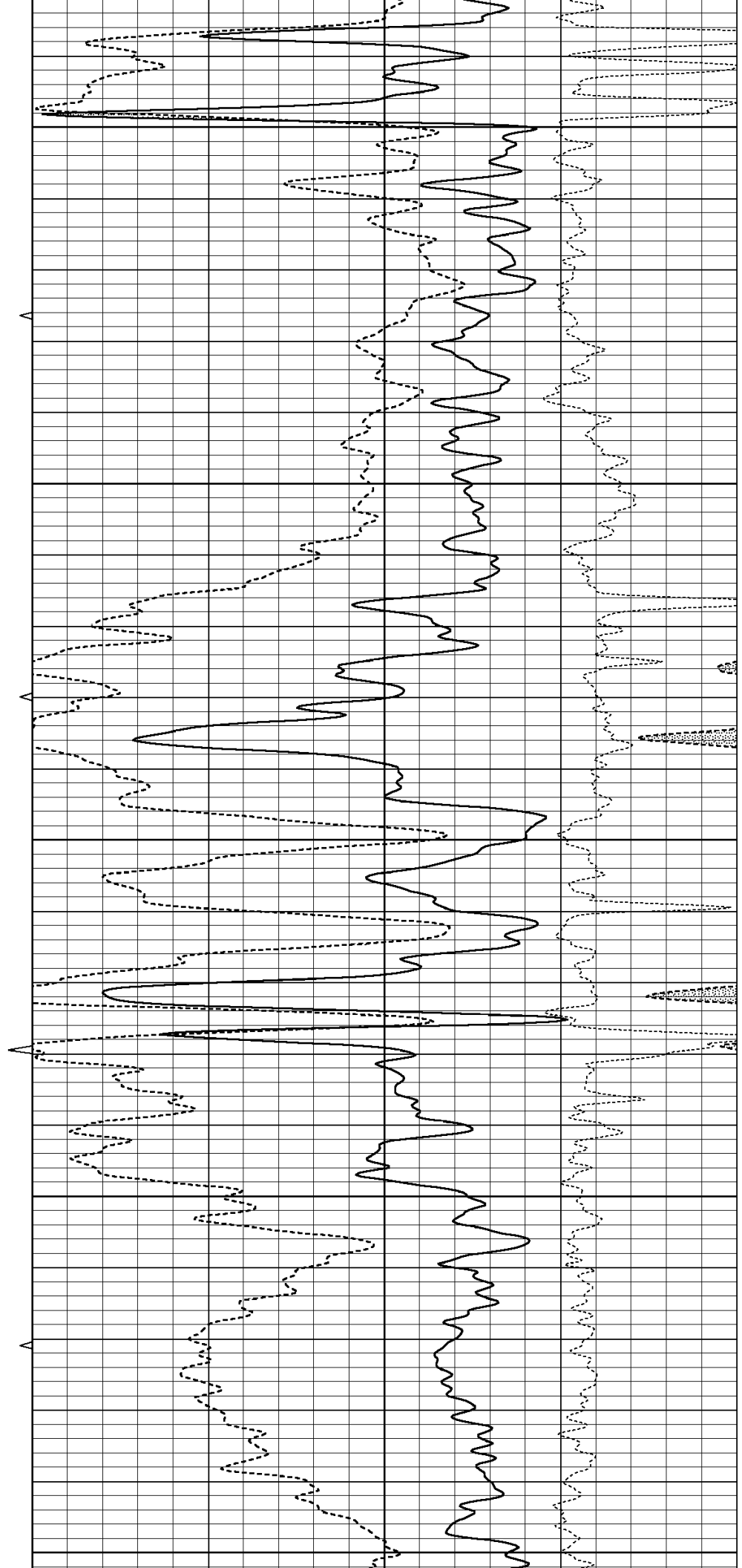
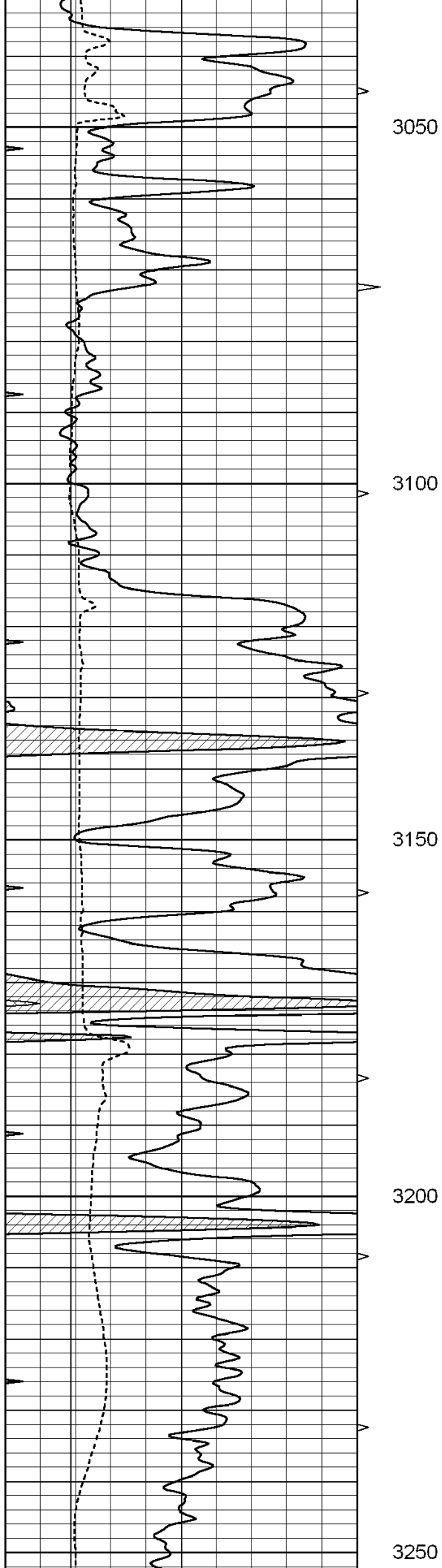


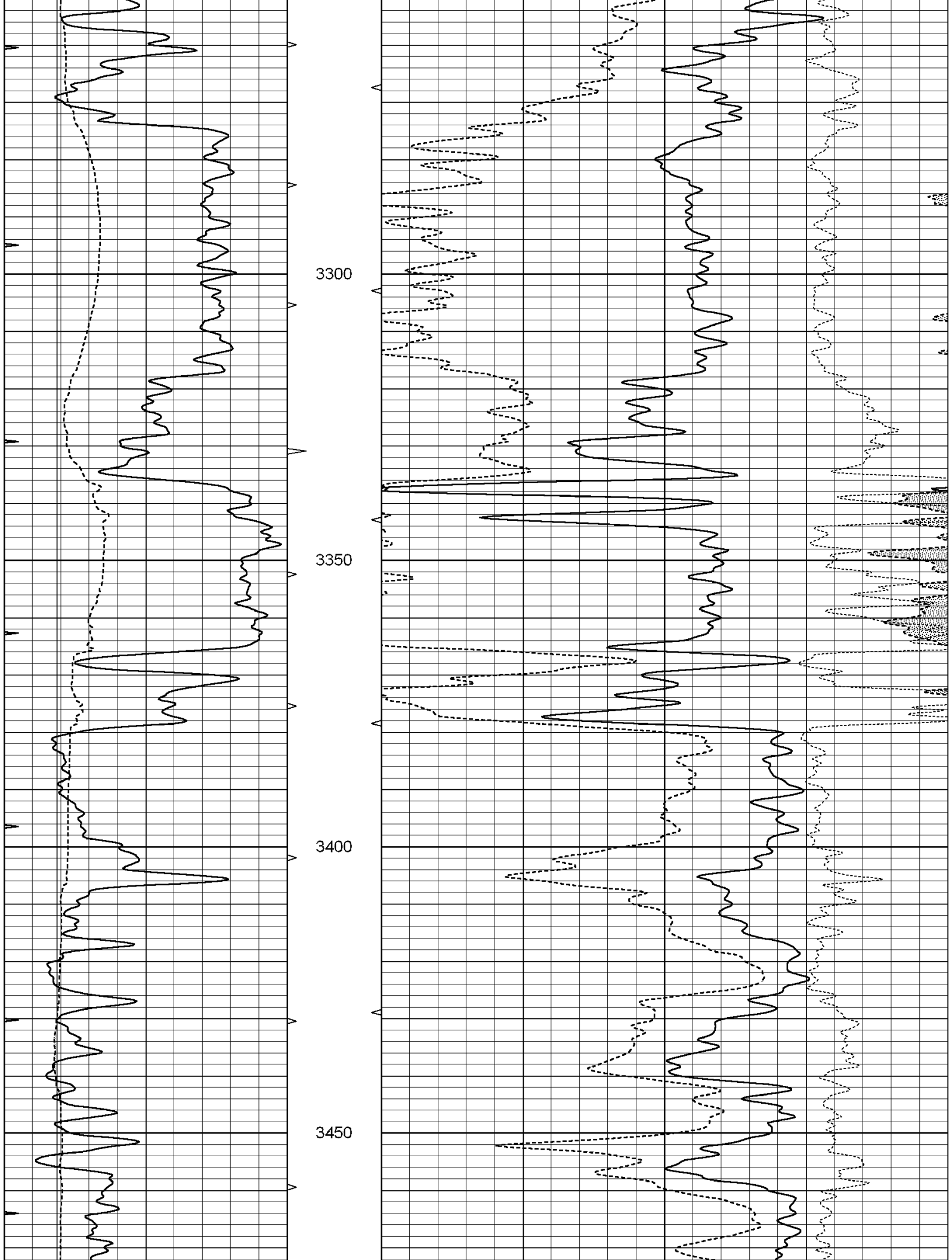


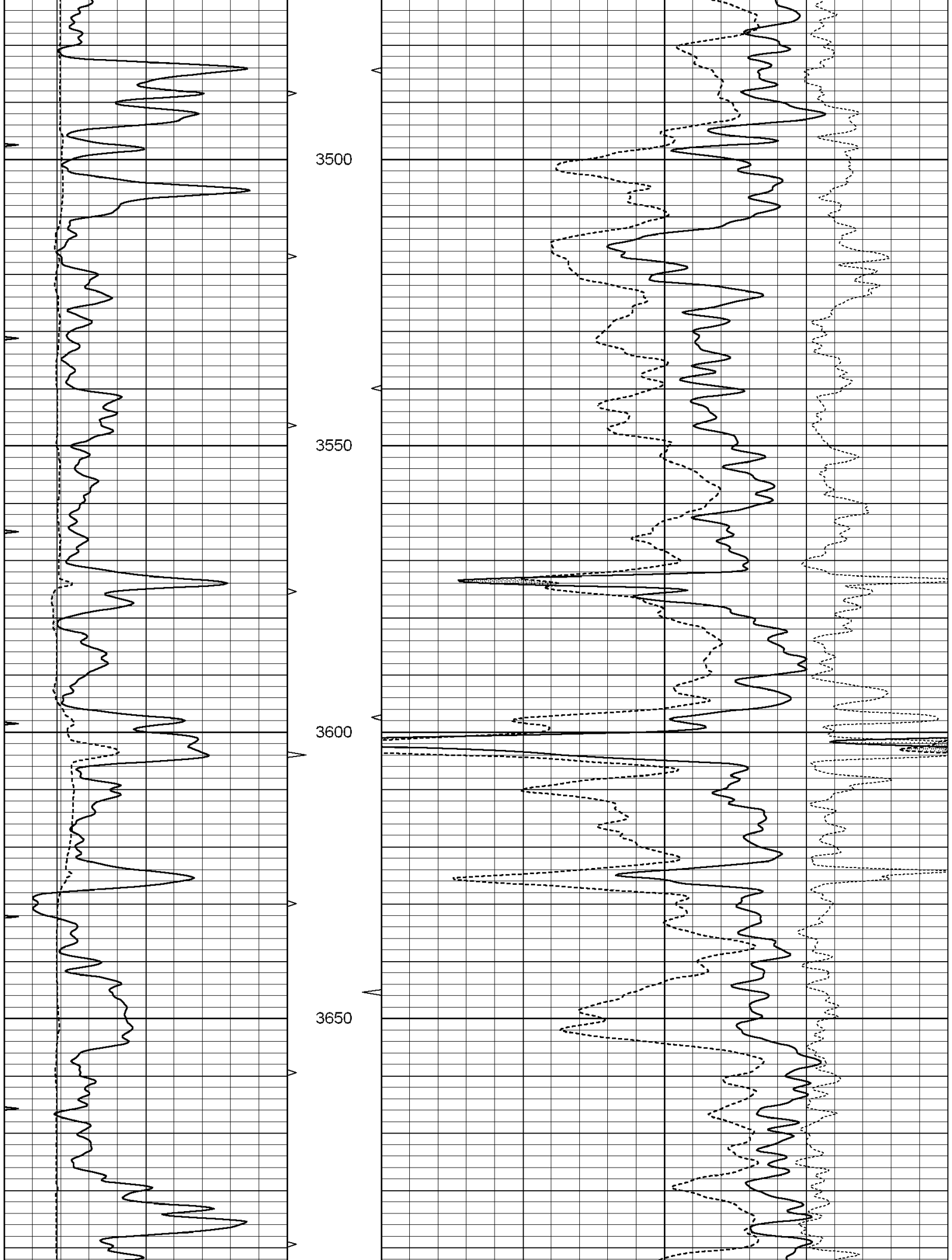


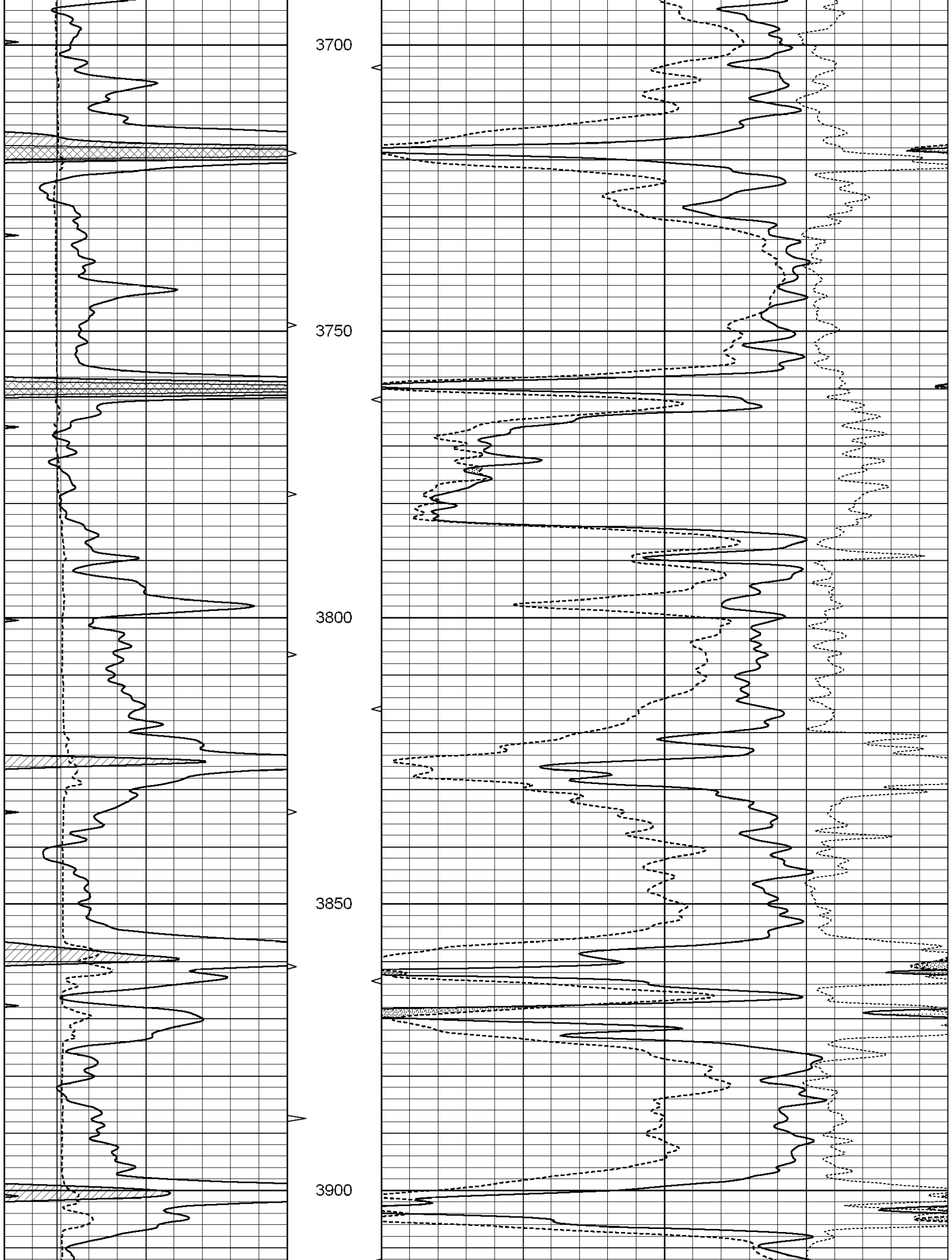


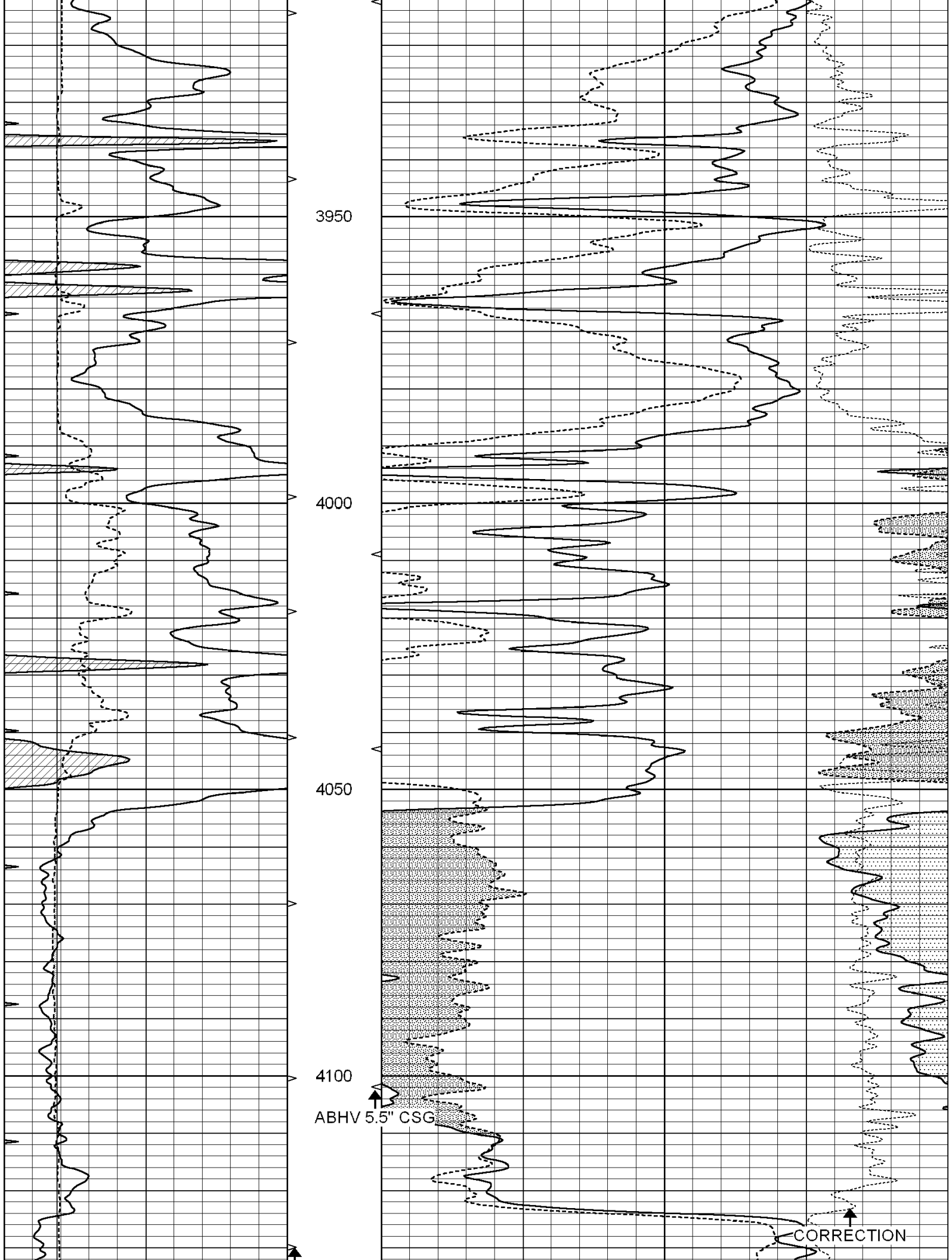












3950

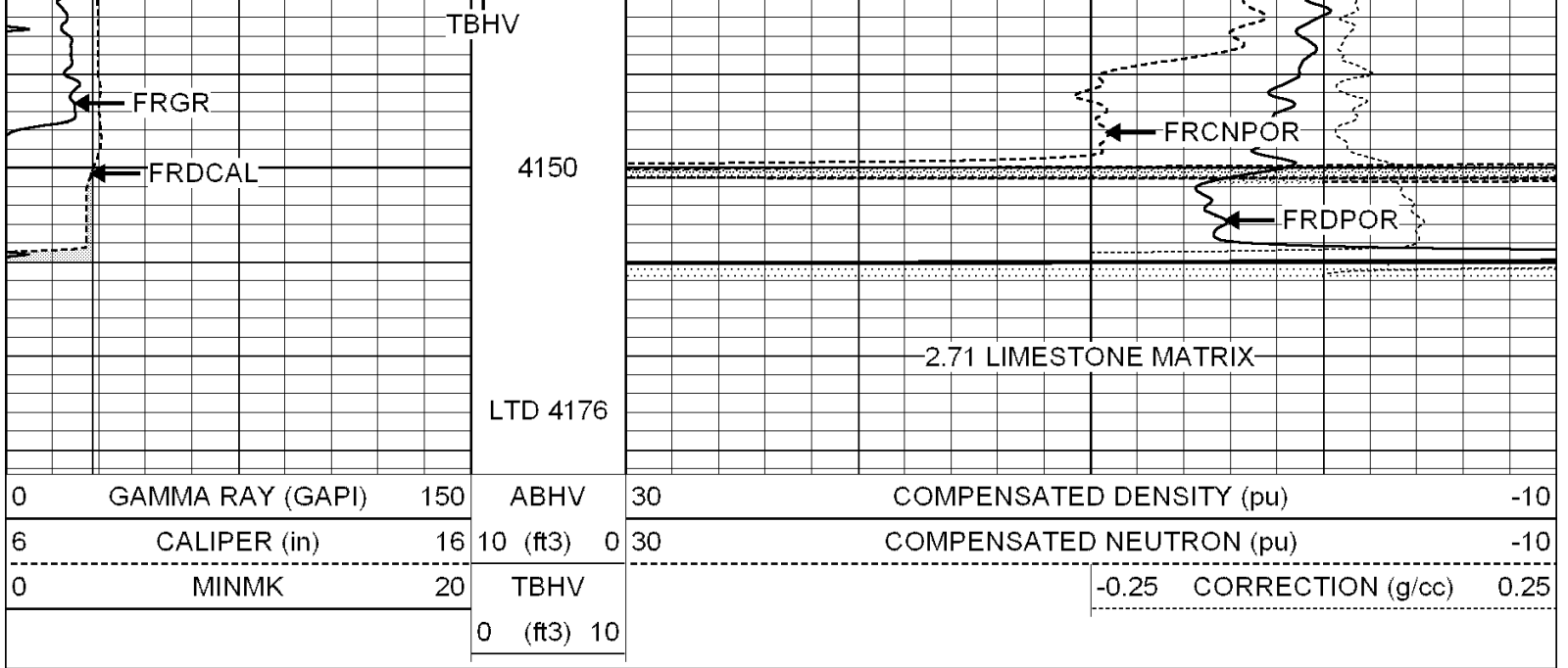
4000

4050

4100

ABHV 5.5" CSG

CORRECTION

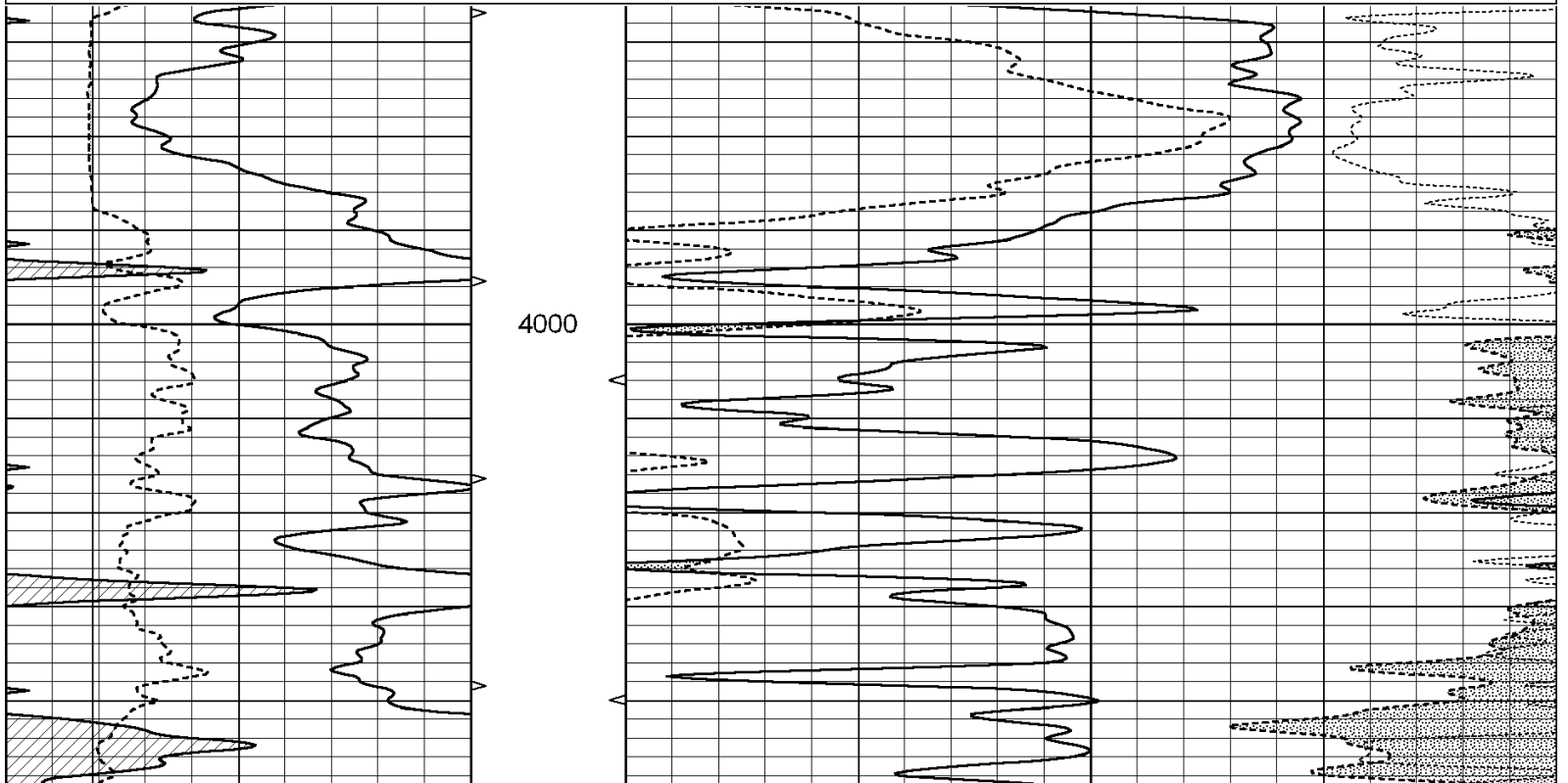


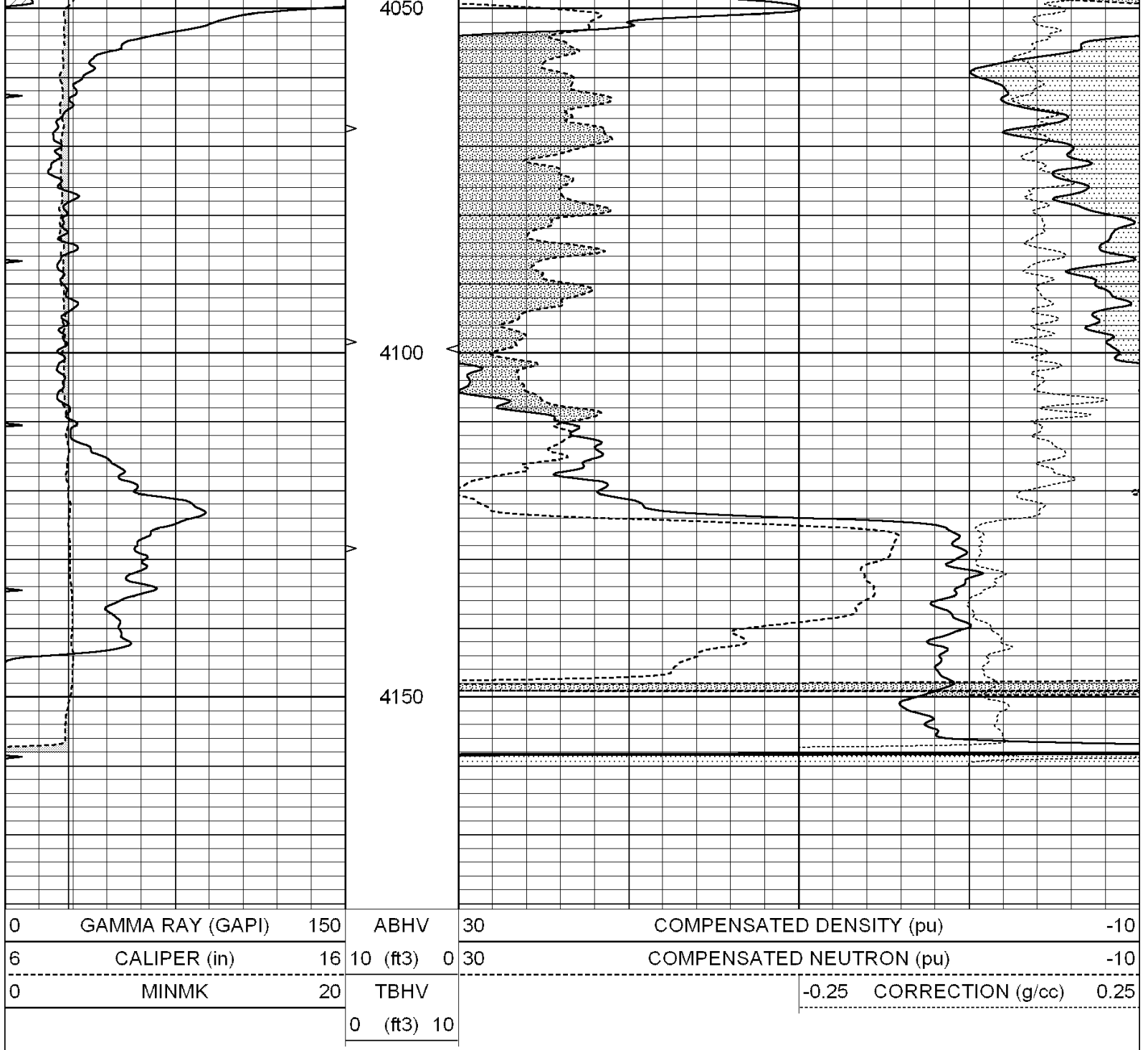
SUPERIOR
Hays,
Kansas

REPEAT SECTION

Database File: 004656ddh.db
 Dataset Pathname: pass2.1
 Presentation Format: _den_neu
 Dataset Creation: Tue Dec 08 14:05:22 2009 by Calc Open-Cased 090629
 Charted by: Depth in Feet scaled 1:240

0	GAMMA RAY (GAPI)	150	ABHV	30	COMPENSATED DENSITY (pu)	-10
6	CALIPER (in)	16	10 (ft3)	0 30	COMPENSATED NEUTRON (pu)	-10
0	MINMK	20	TBHV		-0.25	CORRECTION (g/cc) 0.25
			0 (ft3)	10		





Calibration Report

Database File: 004656ddn.db
 Dataset Pathname: pass2.1
 Dataset Creation: Tue Dec 08 14:05:22 2009 by Calc Open-Cased 090629

Dual Induction Calibration Report

Serial-Model: PROBE8-DILG
 Surface Cal Performed: Fri Aug 01 06:33:19 2008
 Downhole Cal Performed: Mon Jul 28 11:08:27 2008
 After Survey Verification Performed: Mon Jul 28 11:08:27 2008

Surface Calibration

Loop:	Readings		V	References		mmho/m	Results	
	Air	Loop		Air	Loop		m	b
Deep	0.015	0.648	V	0.000	400.000	mmho/m	632.616	-9.730
Medium	0.029	0.796	V	0.000	464.000	mmho/m	605.049	-17.680

Internal:	Zero	Cal		Zero	Cal		m	b
Deep	0.017	0.657	V	0.000	400.000	mmho/m	625.153	-10.619
Medium	0.016	0.757	V	0.000	464.000	mmho/m	625.992	-9.739

Downhole Calibration								
	Readings			References			Results	
	Zero	Cal		Zero	Cal		m'	b'
Deep	0.000	0.000	mmho/m	2.011	405.777	mmho/m	1.000	0.000
Medium	0.000	0.000	mmho/m	7.590	503.393	mmho/m	1.000	0.000
LL3		7.500	V		1500.000	Ohm-m		
		0.000	V		20.000	Ohm-m		
		-6.500	V		3800.000	mmho-m		

After Survey Verification								
	Readings			Targets			Results	
	Zero	Cal		Zero	Cal		m'	b'
Deep	0.000	0.000	mmho/m	0.000	0.000	mmho/m	0.000	0.000
Medium	0.000	0.000	mmho/m	0.000	0.000	mmho/m	0.000	0.000
LL3		1.000	Ohm-m		1.000	Ohm-m		
		0.000	Ohm-m		0.000	Ohm-m		
		1.000	mmho-m		1.000	mmho-m		

Compensated Density Calibration Report

Serial-Model:	GEAR4-GEARHART
Source / Verifier:	143 / 143
Master Calibration Performed:	Fri Jan 16 10:06:35 2009

Master Calibration						
	Density		Far Detector	Near Detector		
Magnesium	1.710	g/cc	1358.55	649.93	cps	
Aluminum	2.580	g/cc	325.11	479.52	cps	
Spine Angle = 78.00			Density/Spine Ratio = 0.595			
	Size		Reading			
Small Ring	8.00	in	3.56	V		
Large Ring	14.00	in	6.65	V		

Compensated Neutron Calibration Report

Serial Number:	5I
Tool Model:	G

CALIBRATION						
Detector	Readings		Target		Normalization	
Short Space	1.00	cps	1.00	cps	1.0000	
Long Space	1.00	cps	1.00	cps	1.0000	

Gamma Ray Calibration Report

Serial Number:	GR6
Tool Model:	OPEN
Performed:	Tue Nov 10 08:32:36 2009

Calibrator Value:	150.0	GAPI
-------------------	-------	------

Background Reading:	0.0	cps
Calibrator Reading:	276.0	cps
Sensitivity:	0.5535	GAPI/cps