



**SUPERIOR
Hays,
Kansas**

**MICRO
LOG**

Company	VINCENT OIL CORPORATION	Location:	API # : 15-095-22198-00-00	Other Services CDL/CNL DIL/SON
Well	WILSON # 1-14	1650' FSL @ 1650' FWL SW-NE-SW		Elevation
Field	WILDCAT	SEC 14 TWP 28 RGE 8W		K.B. 1619 D.F. 1617 G.L. 1609
County	KINGMAN	GROUND LEVEL	Elevation	1609
State	KANSAS	Log Measured From Drilling Measured From	KELLY BUSHING 10 A.G.L. KELLY BUSHING	

Date	12-08-09
Run Number	TWO
Depth Driller	4185
Depth Logger	4176
Bottom Logged Interval	4158
Top Log Interval	1300
Casing Driller	8 5/8" @ 266
Casing Logger	266
Bit Size	7 7/8
Type Fluid In Hole	CHEMICAL MUD
Density / Viscosity	8.9/46
pH / Fluid Loss	9.2/9.5
Source of Sample	FLOWLINE
Rm @ Meas. Temp	.9 @ 22F
Rmf @ Meas. Temp	.675 @ 22F
Rmc @ Meas. Temp	1.44 @ 22F
Source of Rmf / Rmc	MEASUREMENT
Rm @ BHT	.169 @ 117F
Time Circulation Stopped	2 HOURS
Time Logger on Bottom	
Maximum Recorded Temperature	117F
Equipment Number	680
Location	HAYS, KANSAS
Recorded By	JASON CAPPELLUCCI
Witnessed By	M.L. KORPHAGE
JEFF GRONWEG	

<<< Fold Here >>>

All interpretations are opinions based on inferences from electrical or other measurements and we cannot and do not guarantee the accuracy or correctness of any interpretation, and we shall not, except in the case of gross or willful negligence on our part, be liable or responsible for any loss, costs, damages, or expenses incurred or sustained by anyone resulting from any interpretation made by any of our officers, agents or employees. These interpretations are also subject to our general terms and conditions set out in our current Price Schedule.

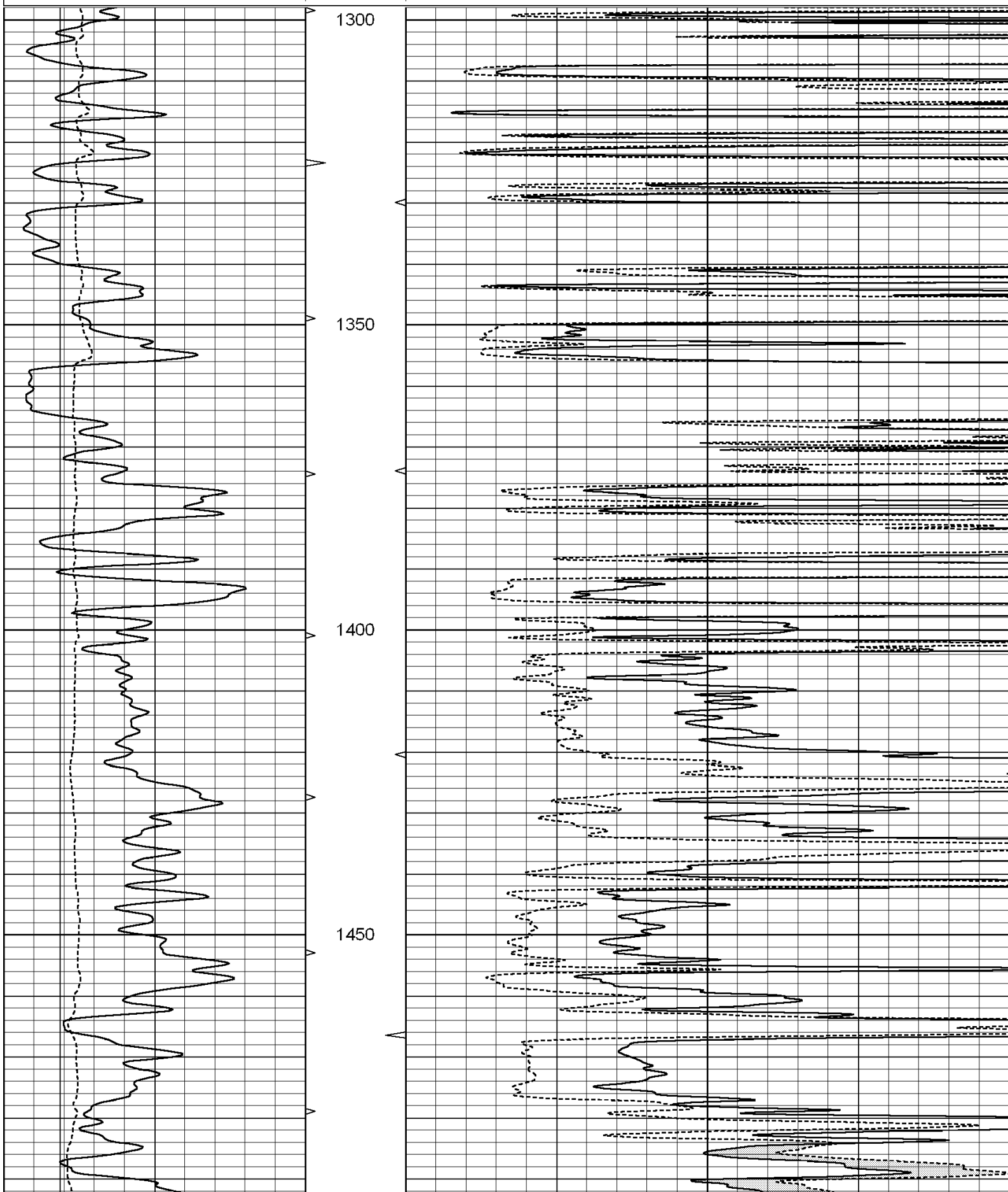
Comments

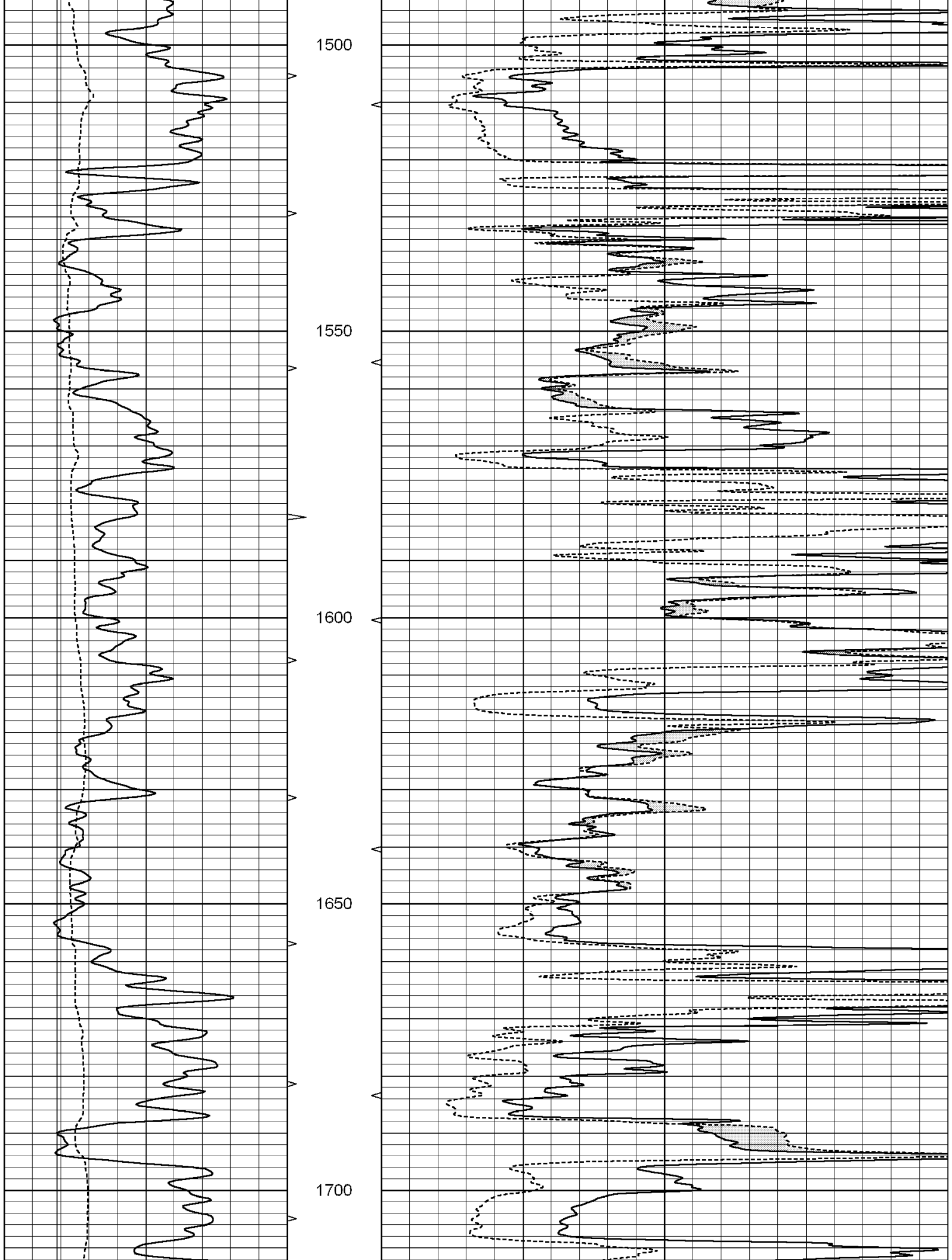
THANK YOU FOR USING SUPERIOR WELL SERVICES HAYS, KANSAS (785) 628-6395
DIRECTIONS
KINGMAN KS., 2 S ON HWY 14 - 2.5W - S INTO

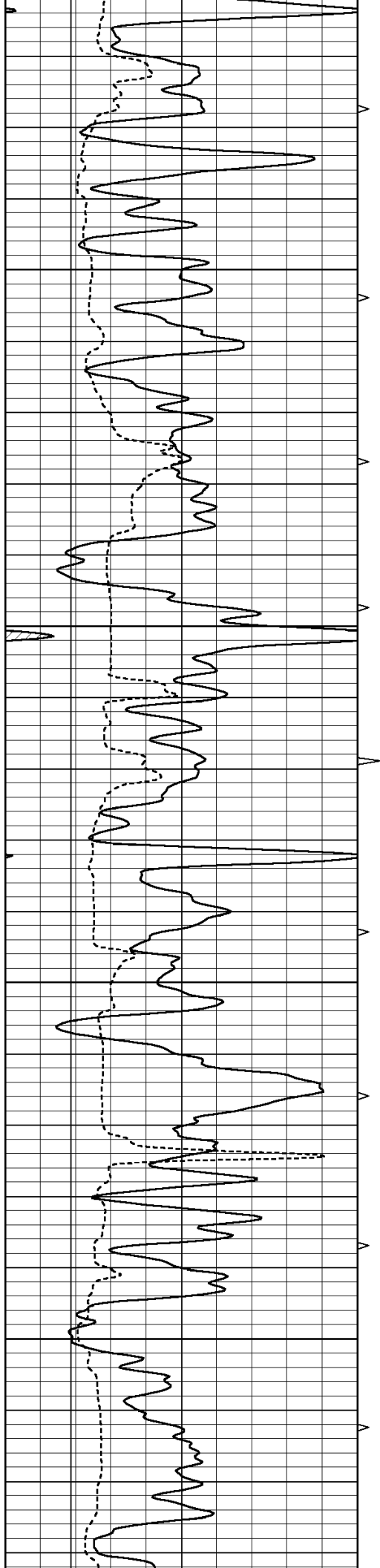
Charted by:

Depth in Feet scaled 1:240

0	GAMMA RAY (GAPI)	150	ABHV	0	MEL1.5 (Ohm-m)	20
6	CALIPER (in)	16	10 (ft3)	0 0	MEL2.0 (Ohm-m)	20
			TBHV			
			0 (ft3)	10		





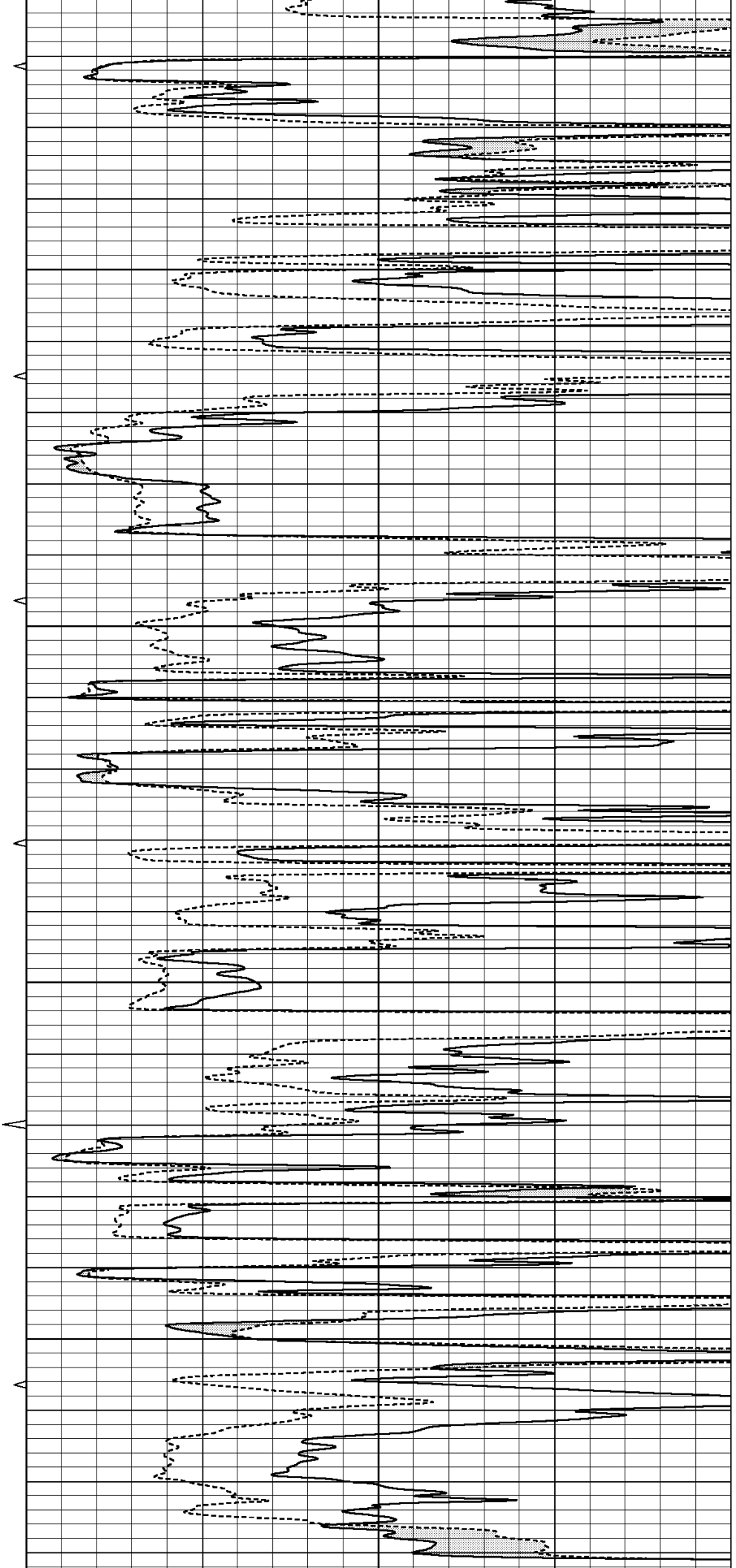


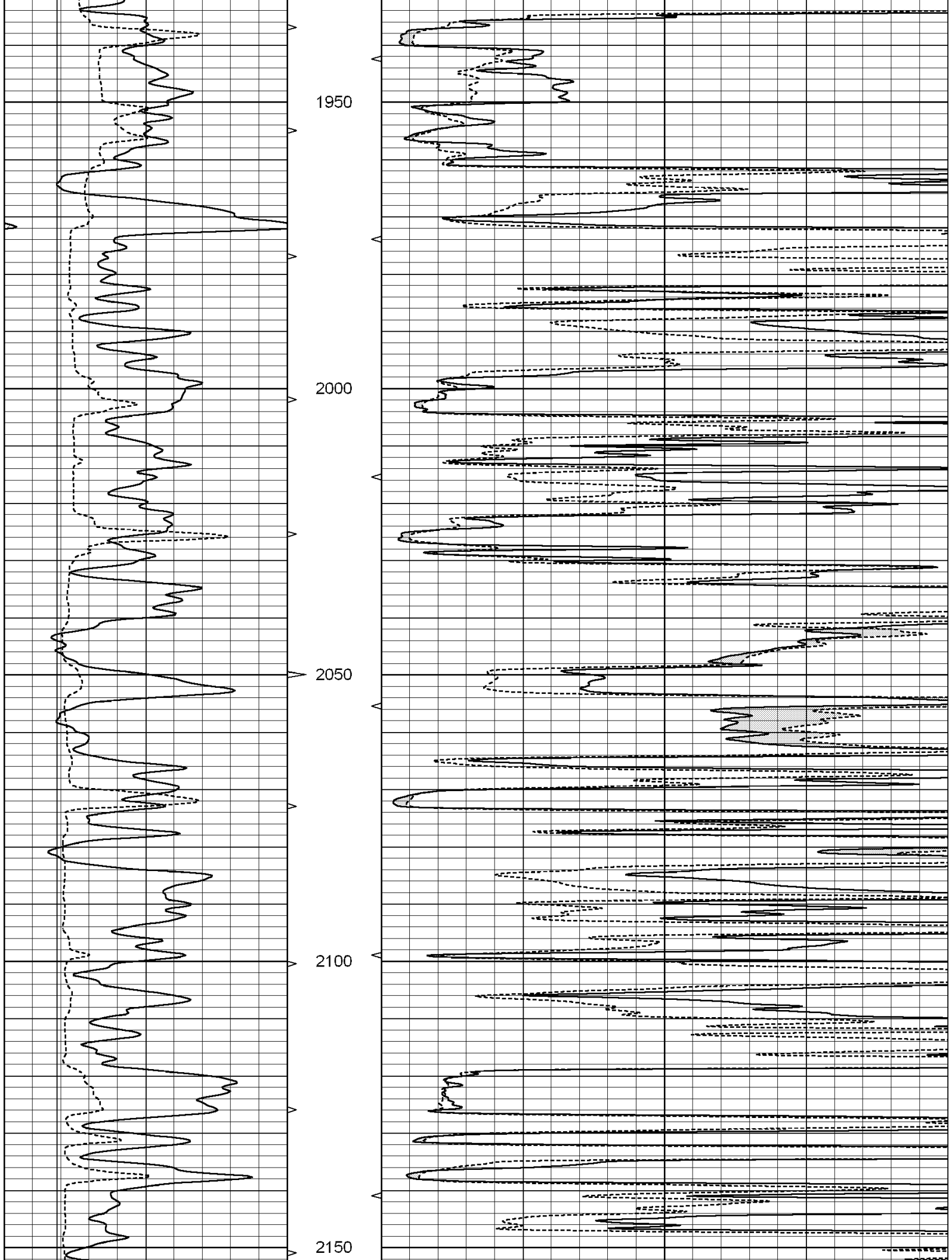
1750

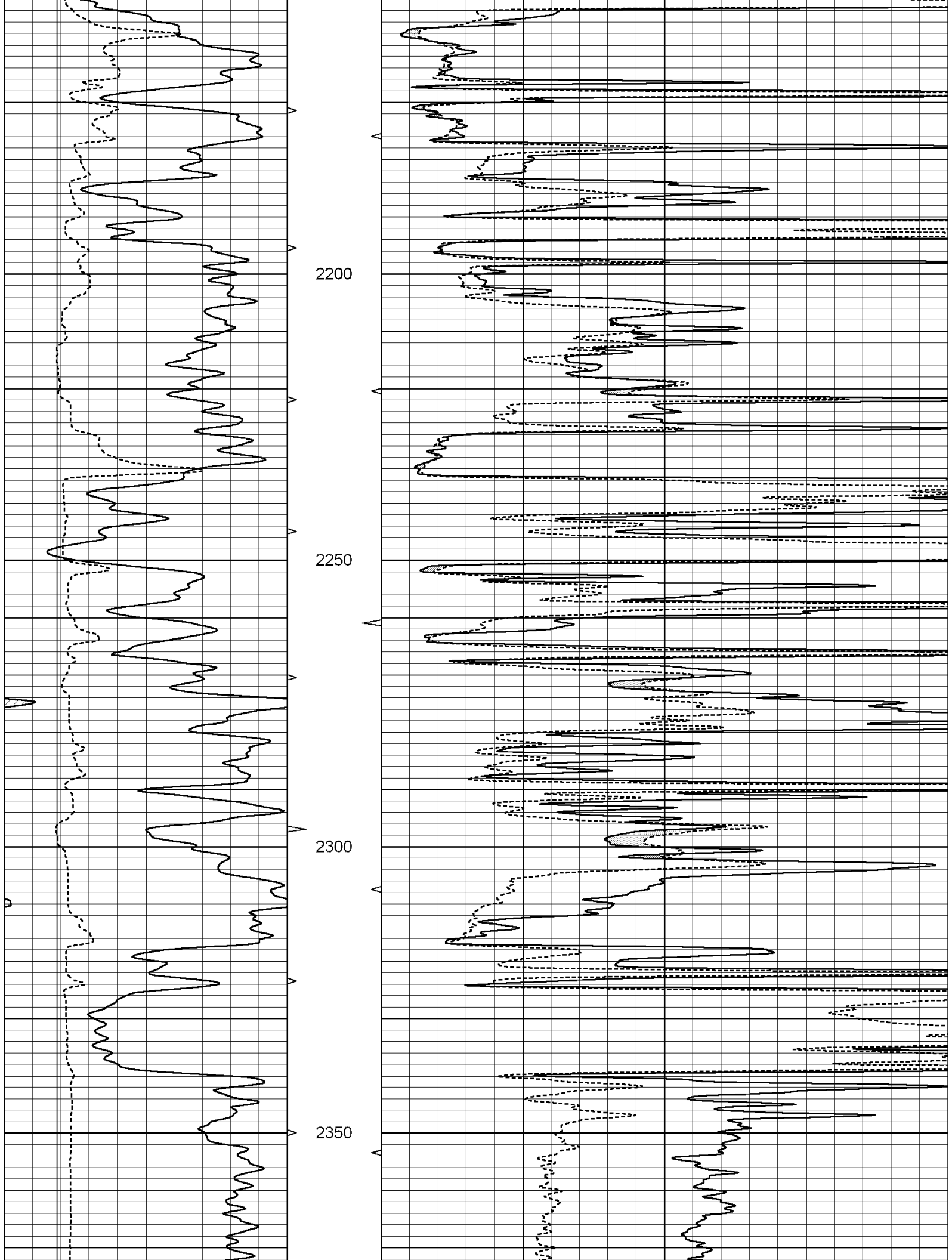
1800

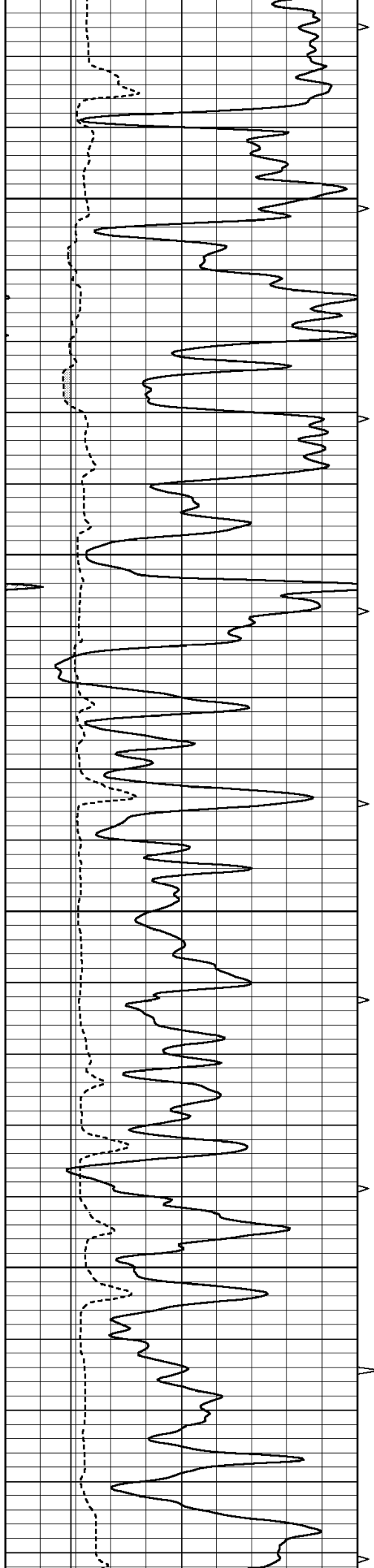
1850

1900







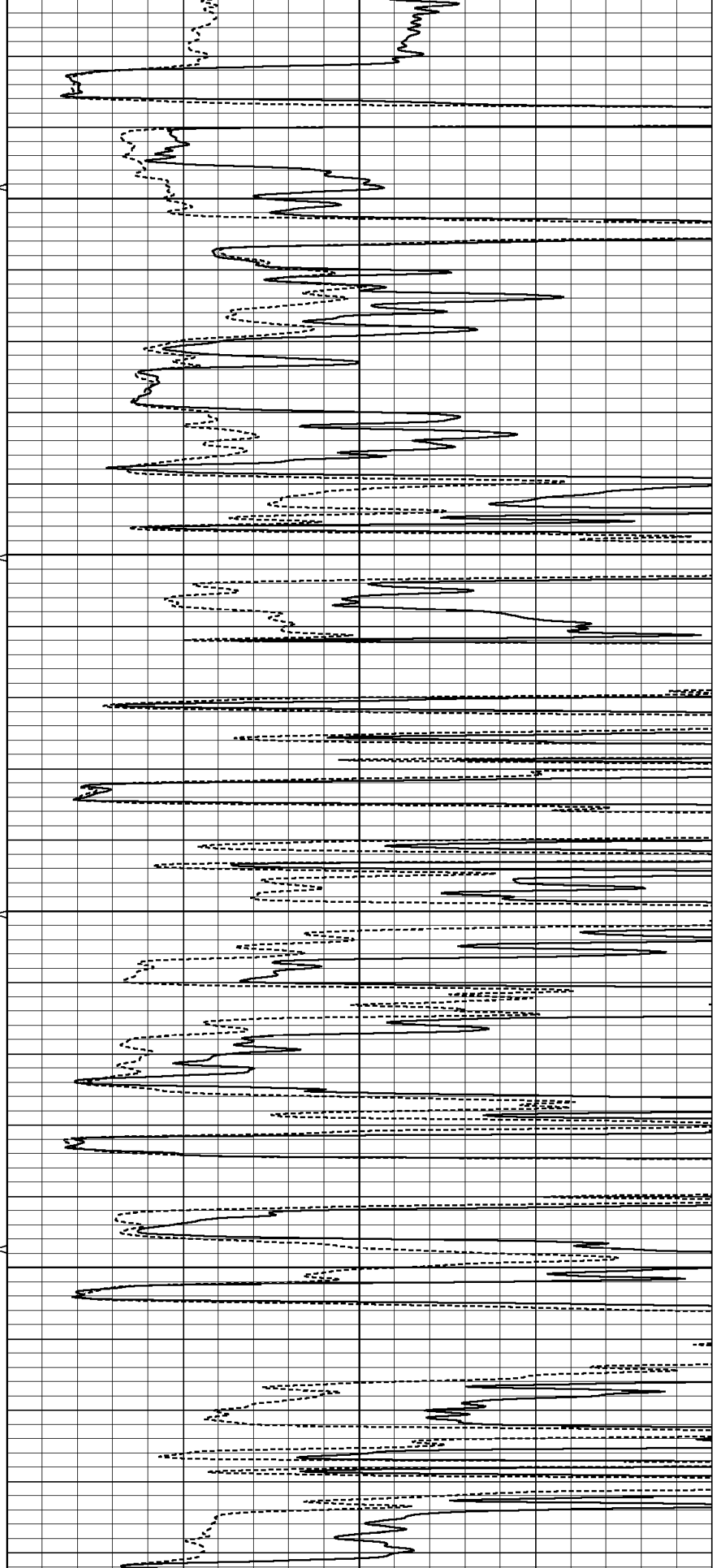


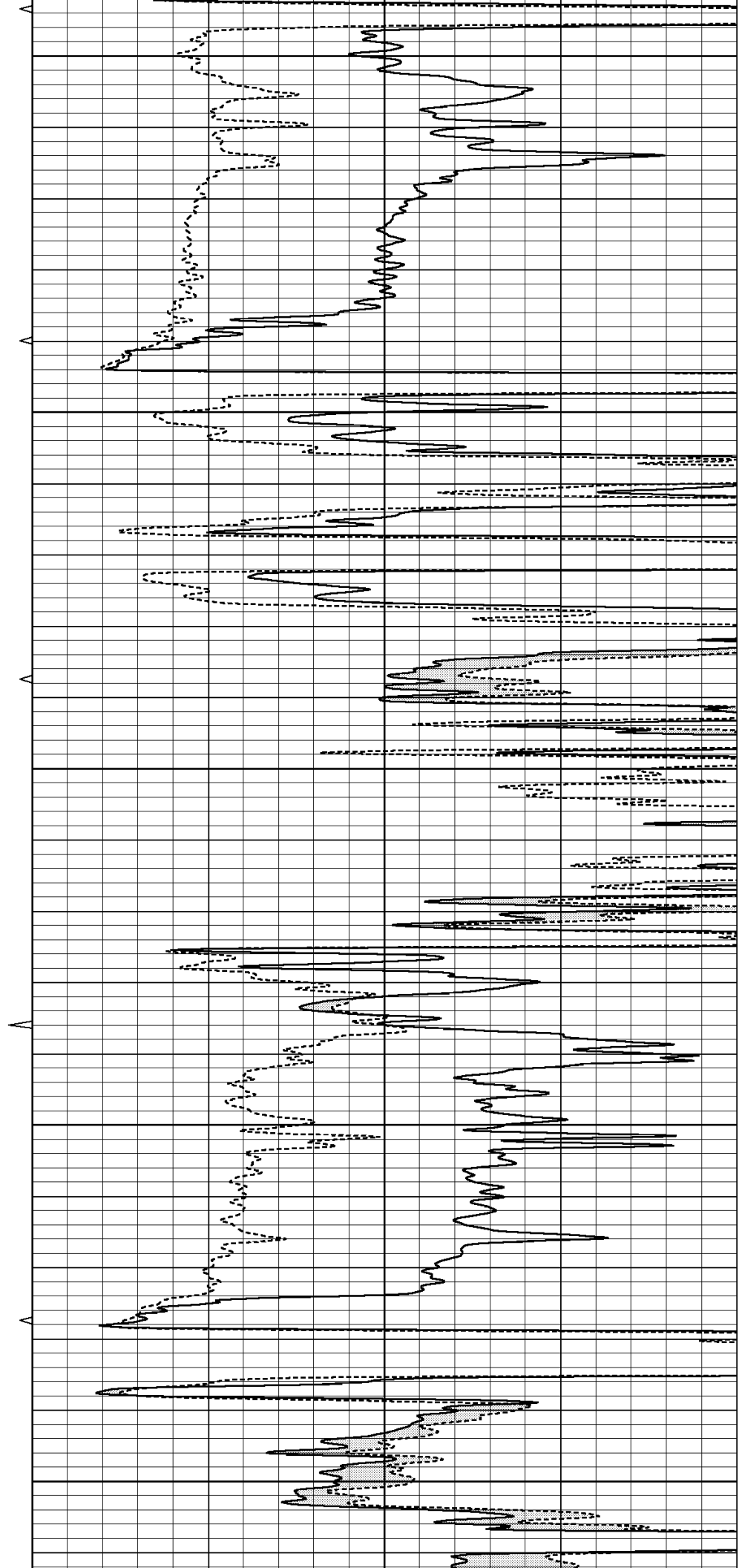
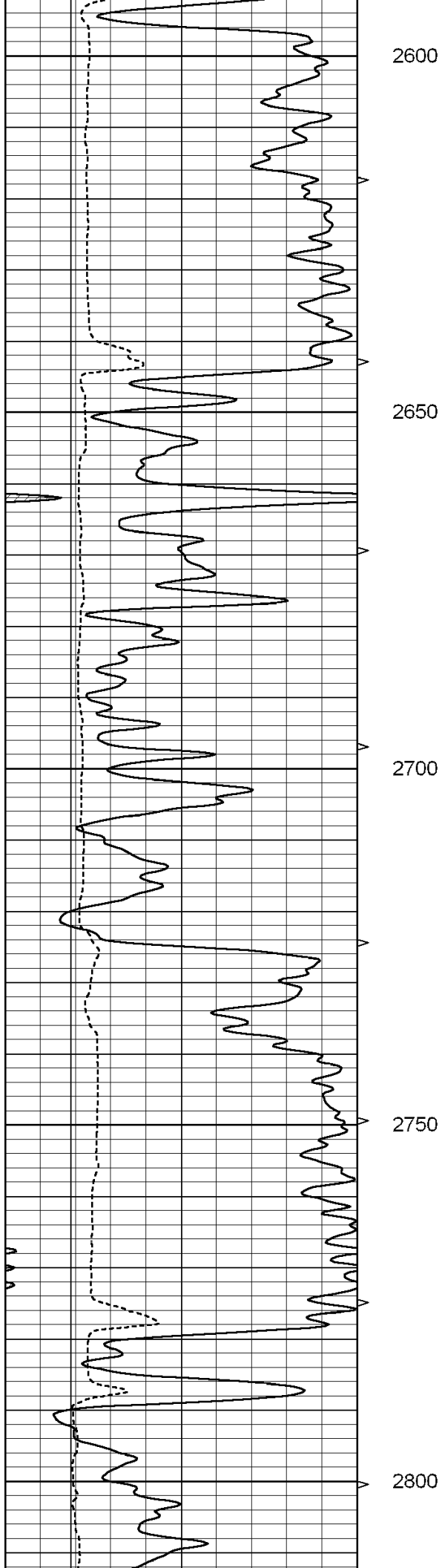
2400

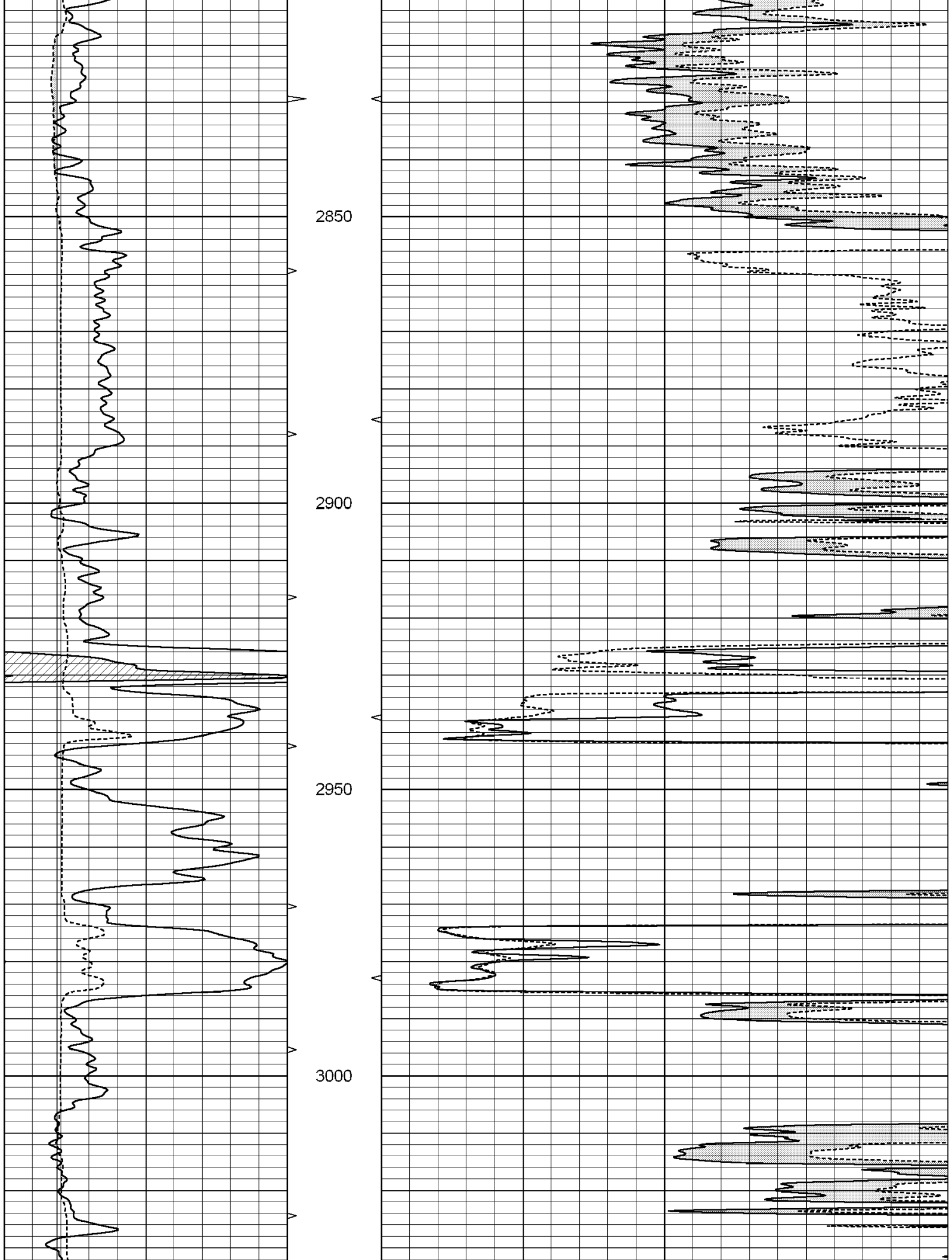
2450

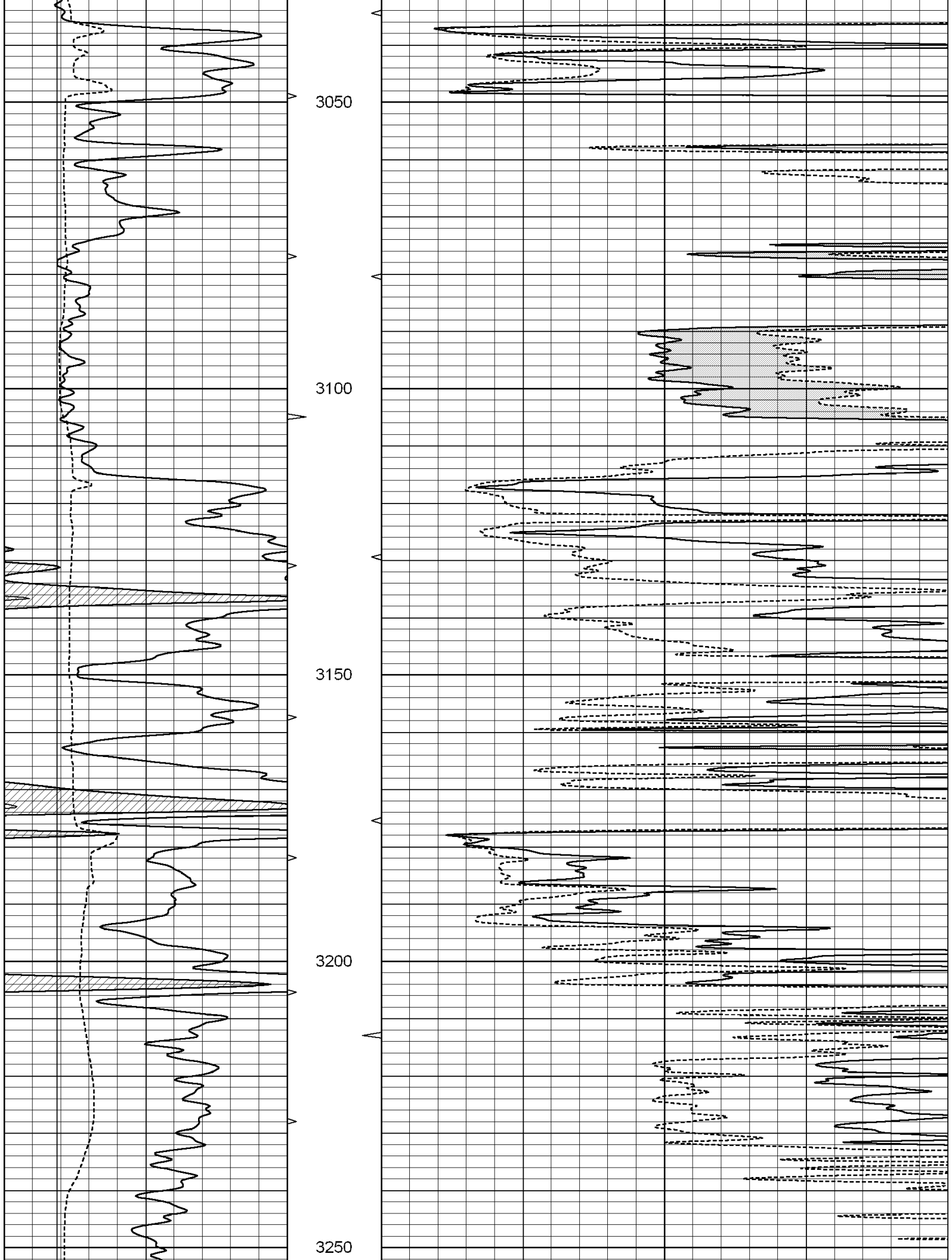
2500

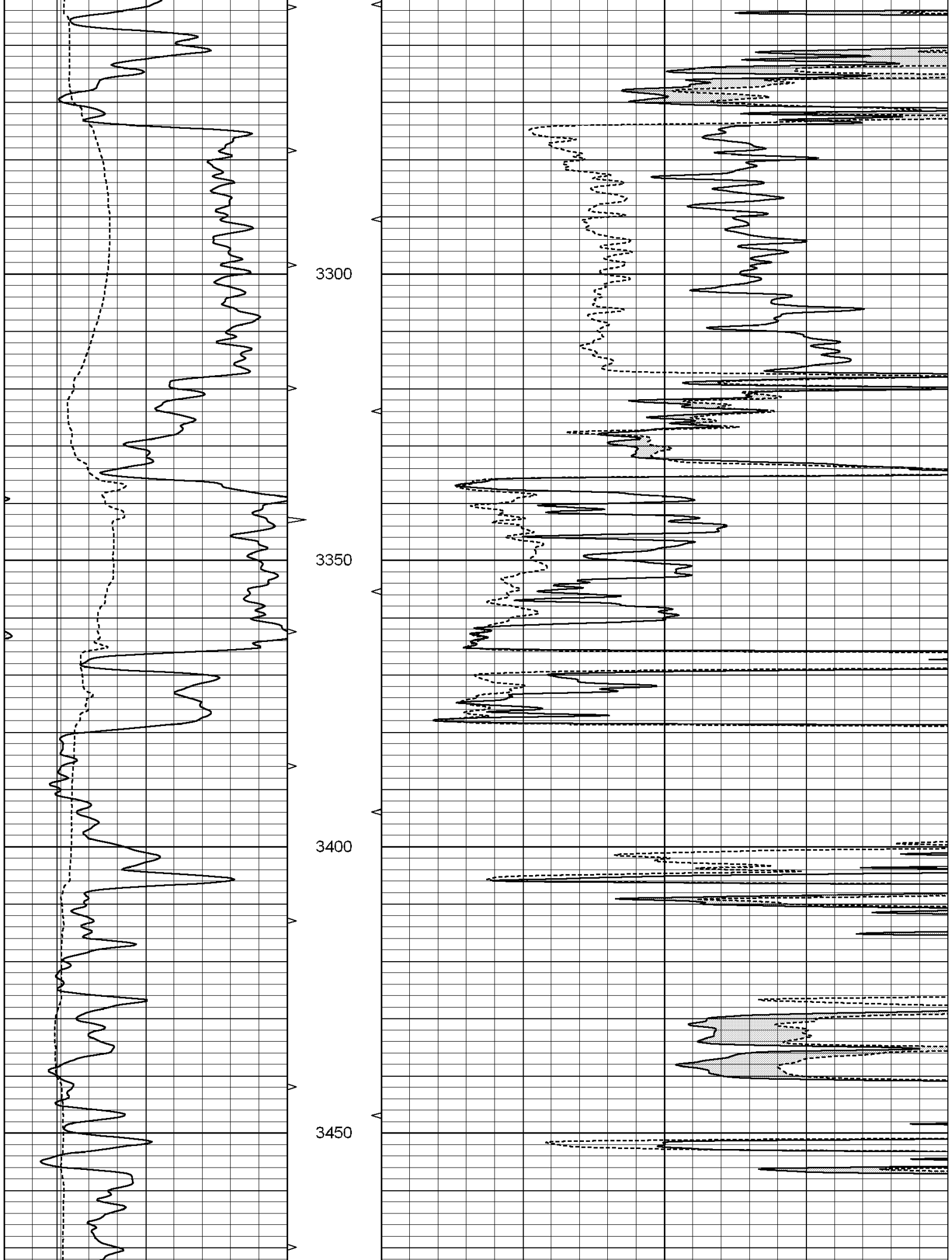
2550

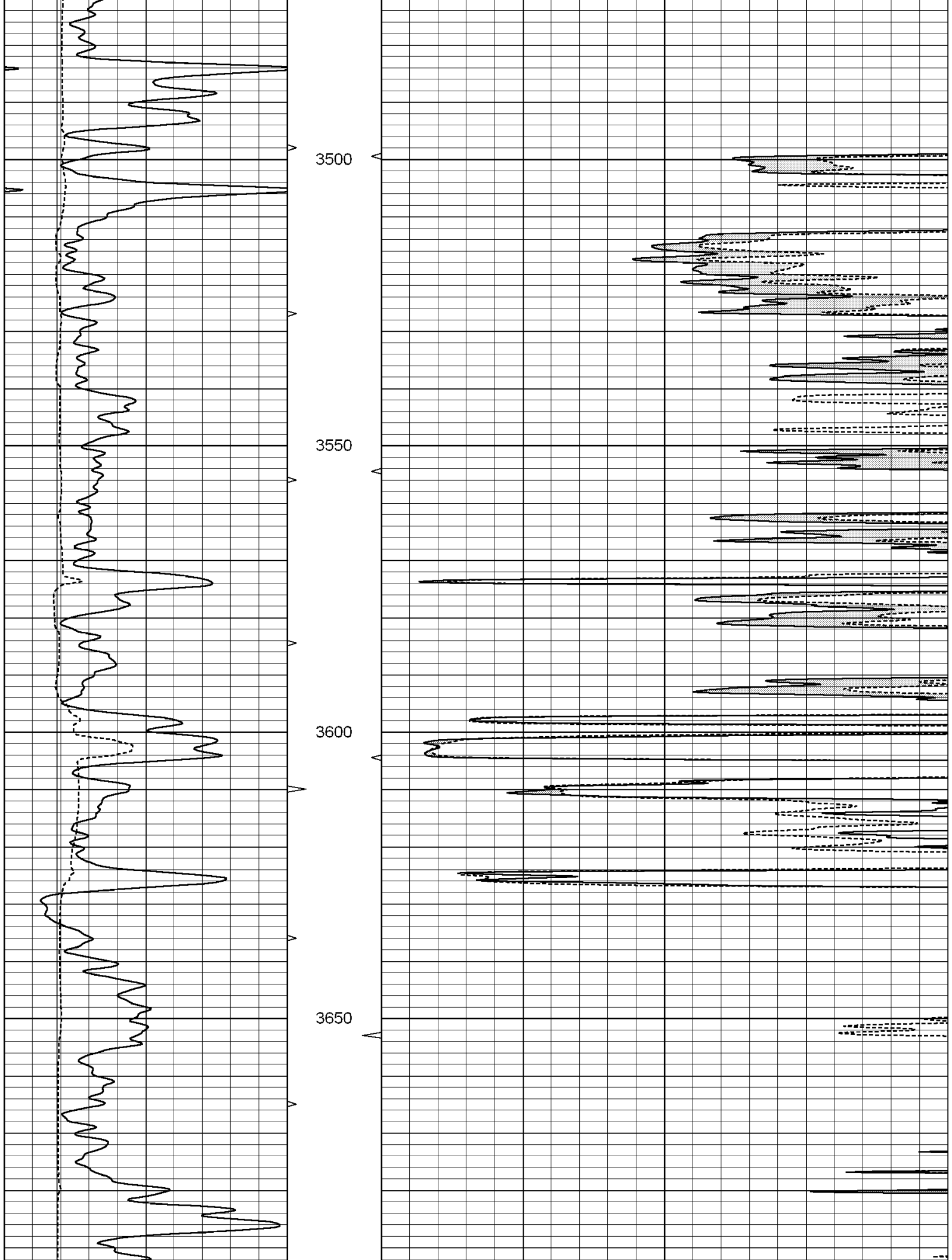


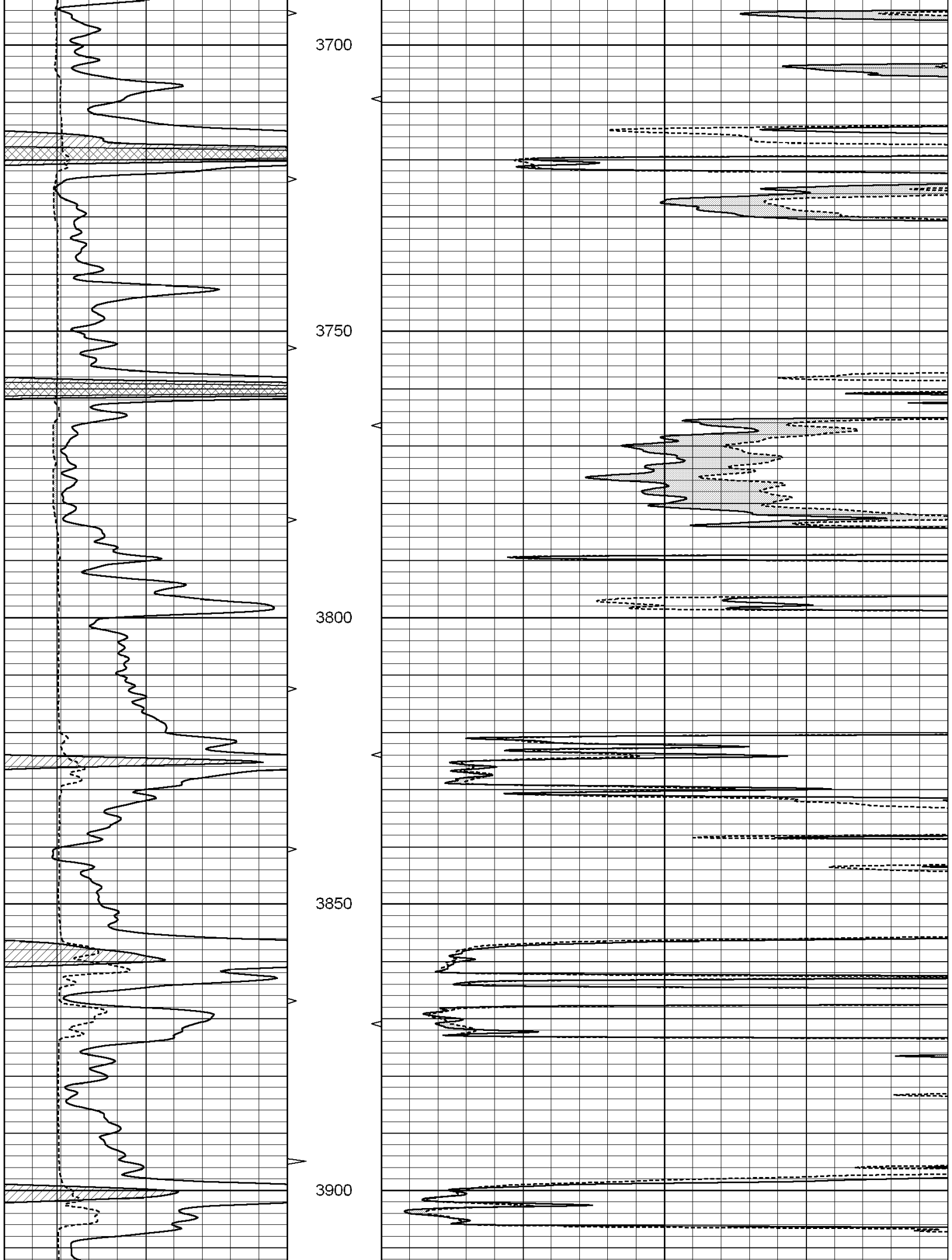


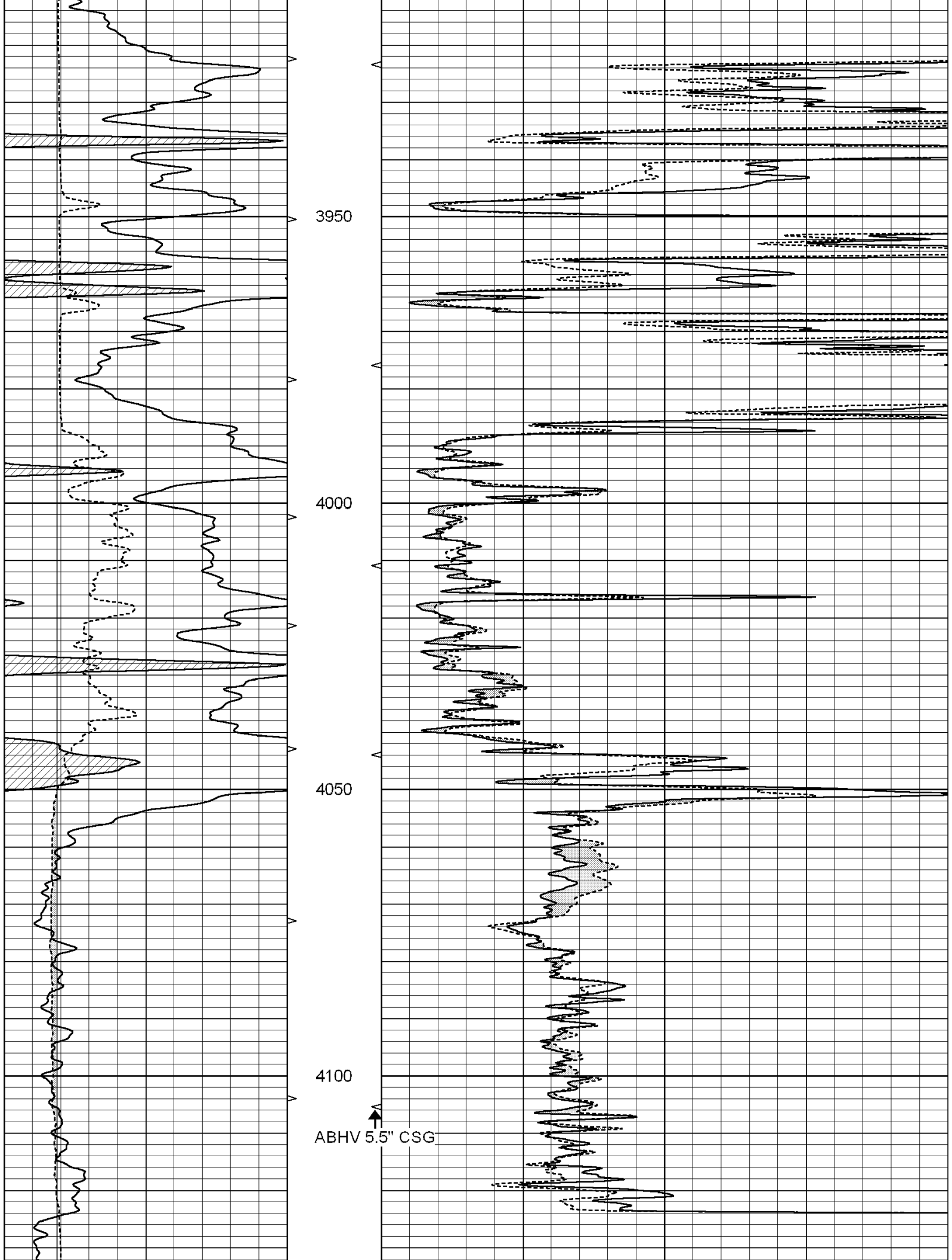


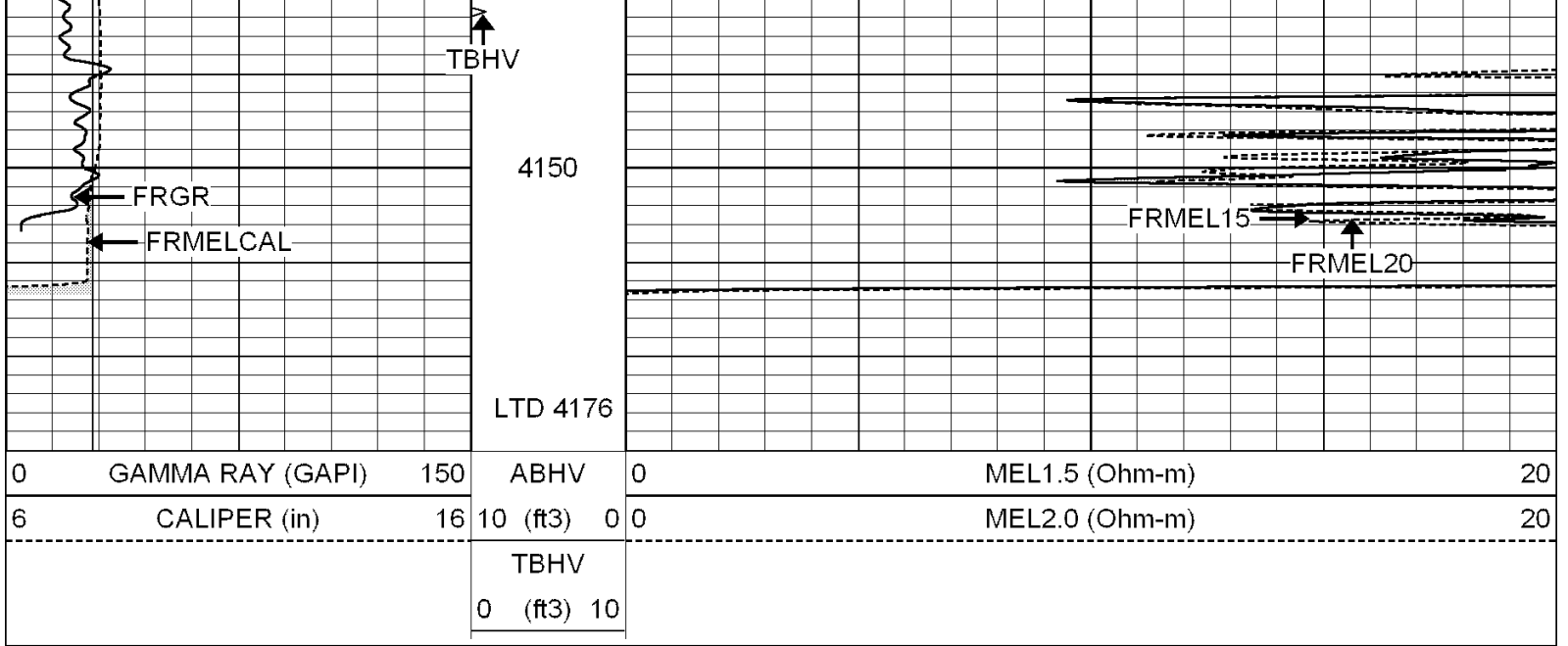










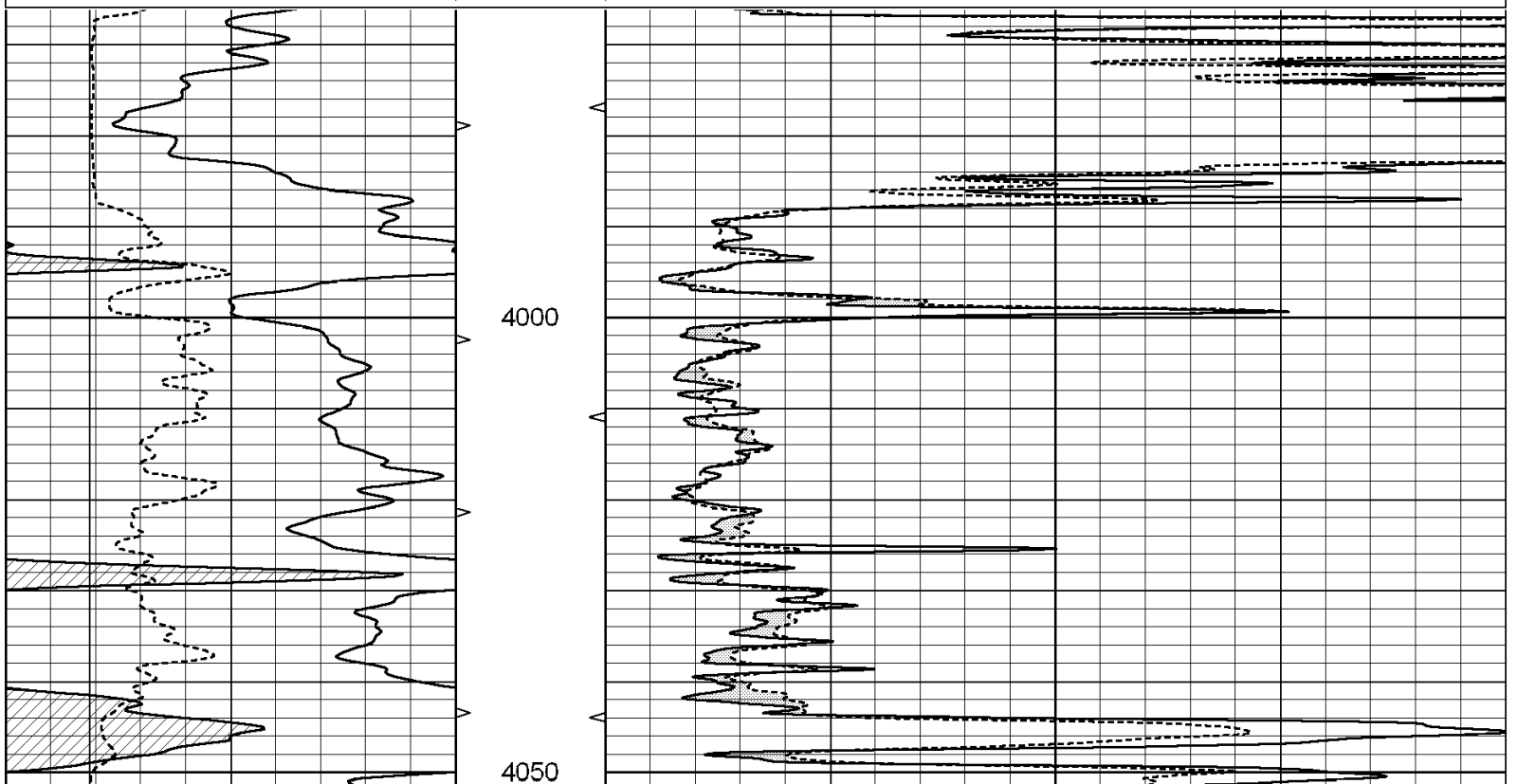


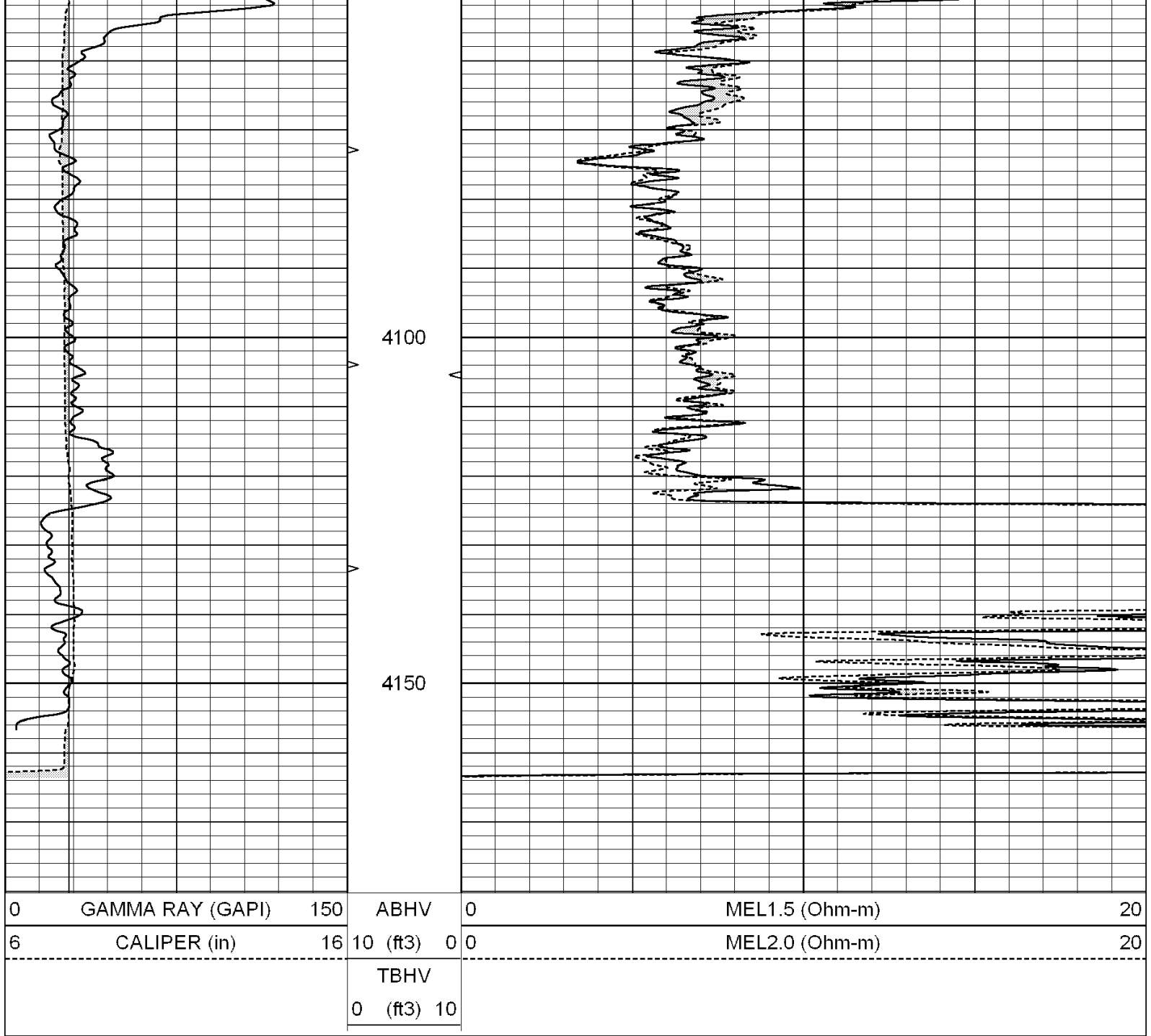
SUPERIOR
Hays,
Kansas

REPEAT SECTION

Database File: 004656ddn.db
 Dataset Pathname: pass5.1
 Presentation Format: _micro
 Dataset Creation: Tue Dec 08 15:43:26 2009 by Calc Open-Cased 090629
 Charted by: Depth in Feet scaled 1:240

0	GAMMA RAY (GAPI)	150	ABHV	0	MEL1.5 (Ohm-m)	20
6	CALIPER (in)	16	10 (ft)	0	MEL2.0 (Ohm-m)	20
			TBHV			
			0 (ft)	10		





Calibration Report

Database File: 004656ddn.db
 Dataset Pathname: pass5
 Dataset Creation: Tue Dec 08 15:34:20 2009 by Log Open-Cased 090629

MICRO Calibration Report

Serial Number:	MICRO6	
Tool Model:	PROBE	
Performed:	Fri Nov 27 05:40:03 2009	
Caliper Calibration:	Gain=3.100	Offset=4.177
References	Low Cal	High Cal
Readings	7.900	14.250
	1.185	2.814
1.5" Calibration:	Gain=40.781	Offset=-0.851
	Low Cal	High Cal

References	0.000	20.000
Readings	0.008	1.200

2" Calibration:	Gain=40.739	Offset=-0.193
References	Low Cal 0.000	High Cal 20.000
Readings	0.008	0.888

Gamma Ray Calibration Report

Serial Number:	GR6
Tool Model:	OPEN
Performed:	Tue Nov 10 08:32:36 2009

Calibrator Value:	150.0	GAPI
-------------------	-------	------

Background Reading:	0.0	cps
Calibrator Reading:	276.0	cps

Sensitivity:	0.5535	GAPI/cps
--------------	--------	----------