



# Microresistivity Log

**DIGITAL LOG** (785) 625-3858

API No.	15-101-22,199-00-00		
Company	Carmen Schmitt, Inc.		
Well	Wilkins No. 1		
Field	Wildcat		
County	Lane	State	Kansas
Location	990' FNL & 2310' FWL		
Sec: 11	Twp: 17S	Rge: 30W	Elevation 2849
Permanent Datum	Ground Level		Elevation 2849
Log Measured From	Kelly Bushing	9	Ft. Above Perm. Datum
Drilling Measured From	Kelly Bushing		
			K.B. 2858
			D.F. 2849
			G.L. 2849

Date	11/24/2009	
Run Number	Two	
Depth Driller	4630	
Depth Logger	4632	
Bottom Logged Interval	4631	
Top Log Interval	3700	
Casing Driller	8.625 @ 223	
Casing Logger	221	
Bit Size	7.875	
Type Fluid in Hole	Chemical	
Salinity, ppm CL	2.500	
Density / Viscosity	9.1	53
pH / Fluid Loss	9.0	8.0
Source of Sample	Flowline	
Rm @ Meas. Temp	3.5 @ 70	
Rmf @ Meas. Temp	2.625 @ 70	
Rmc @ Meas. Temp	4.72 @ 70	
Source of Rmf / Rmc	Charts	
Rm @ BHT	1.97 @ 124	
Operating Rig Time	3 Hours	
Max Rec. Temp. F	124	
Equipment Number	10	
Location	Hays	
Recorded By	Jason Wellbrock	
Witnessed By	Tom Funk	

<<< Fold Here >>>

All interpretations are opinions based on inferences from electrical or other measurements and we cannot and do not guarantee the accuracy or correctness of any interpretation, and we shall not, except in the case of gross or willful negligence on our part, be liable or responsible for any loss, costs, damages, or expenses incurred or sustained by anyone resulting from any interpretation made by any of our officers, agents or employees. These interpretations are also subject to our general terms and conditions set out in our current Price Schedule.

**Comments**

Thank you for using Log-Tech, Inc.  
(785) 625-3858

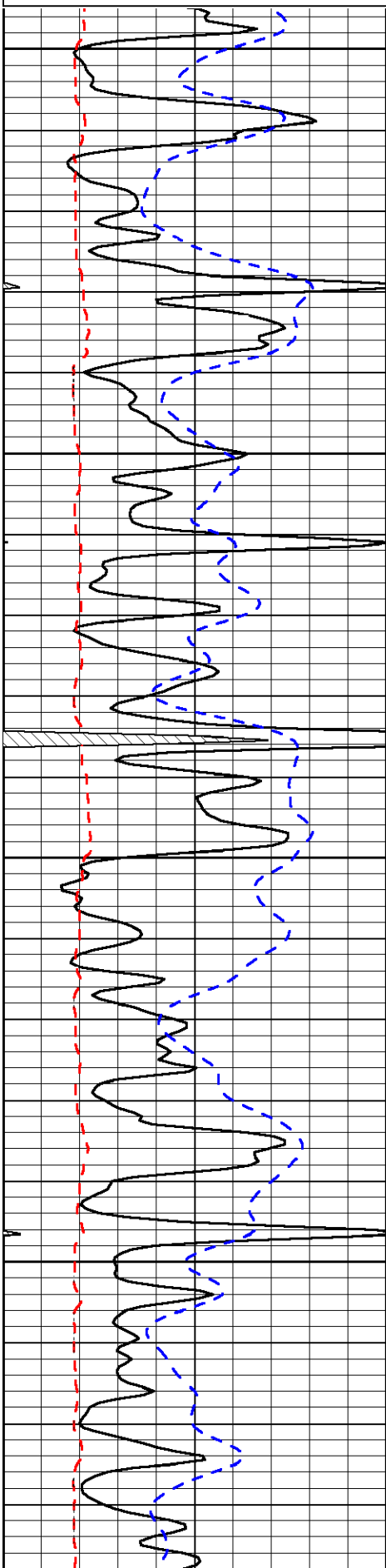
Healy 1/4 S, 3/4 E, S Into

Database File: c:\warrior\data\carmen schmitt\_wilkins no. 1\carmenhd.db  
 Dataset Pathname: dil/carm2in  
 Presentation Format: micro  
 Dataset Creation: Wed Nov 25 01:41:00 2009  
 Charted by: Depth in Feet scaled 1:240

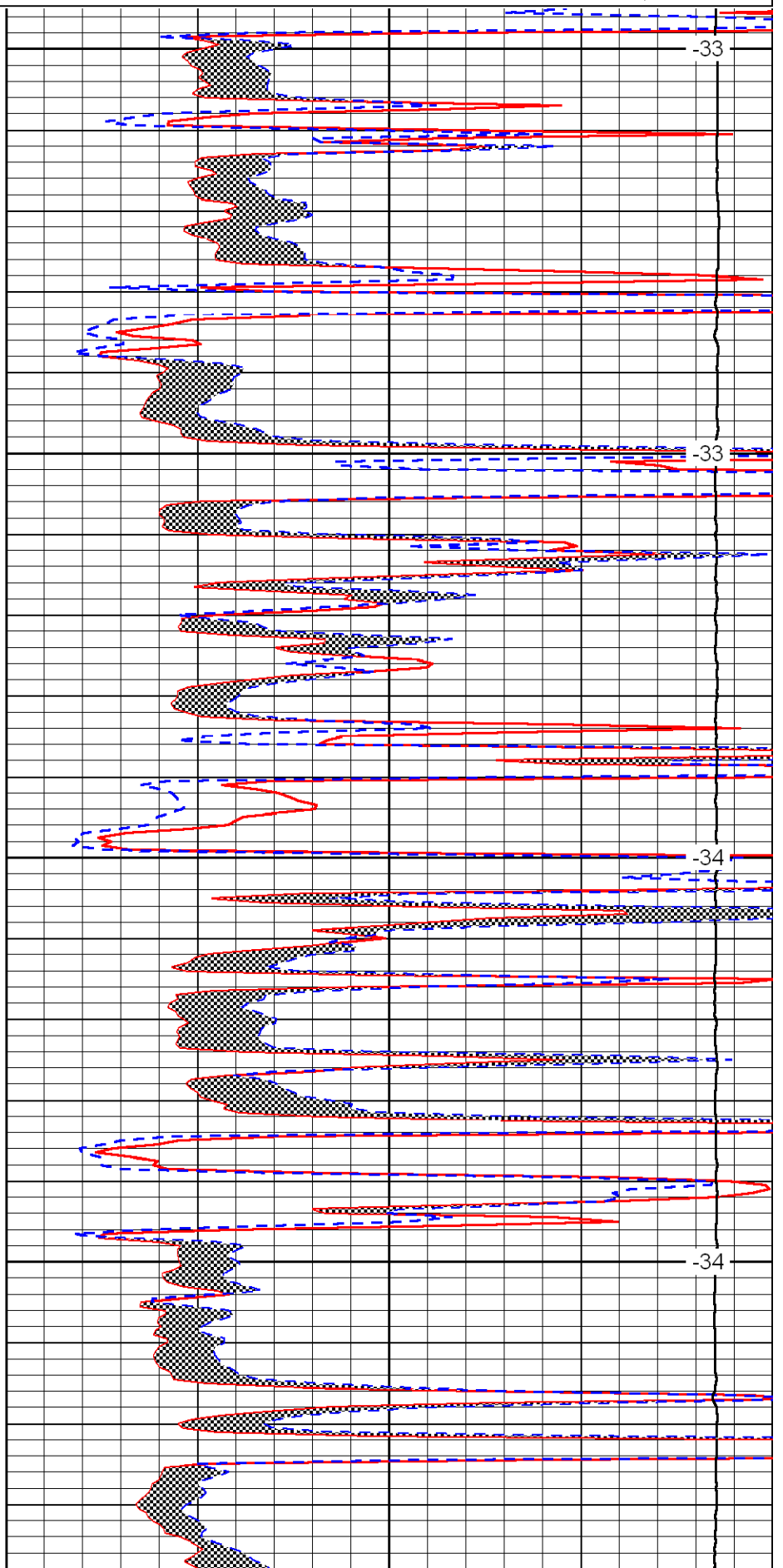
0	Gamma Ray	150
6	Micro Log Caliper (in)	16
-200	SP (MV)	0

0	Micro Inverse 1 X 1 (Ohm-m)	40
0	Micro Normal 2" (Ohm-m)	40
15000	Line Weight (lb)	0

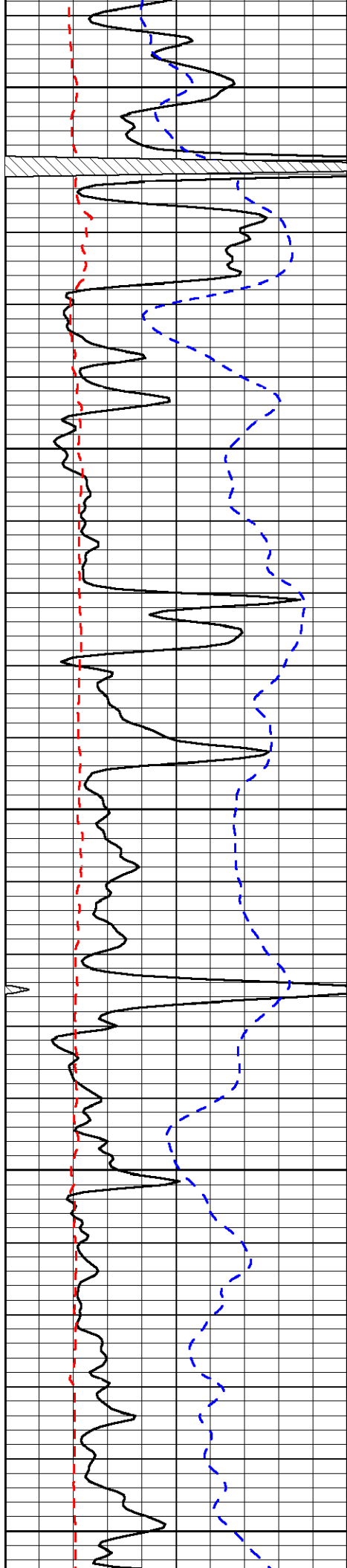
LSPD  
(ft/min)



3700  
3750  
3800  
3850



-33  
-33  
-34  
-34



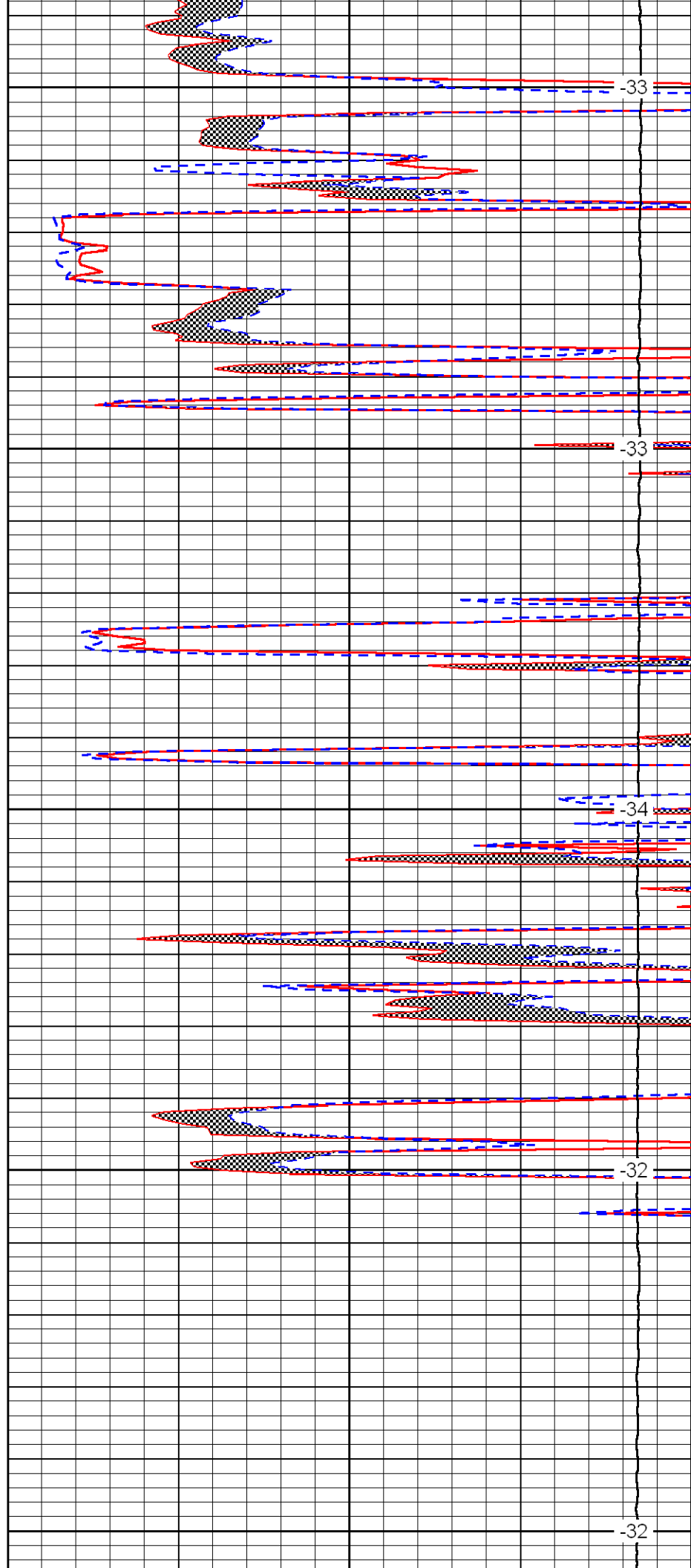
3900

3950

4000

4050

4100



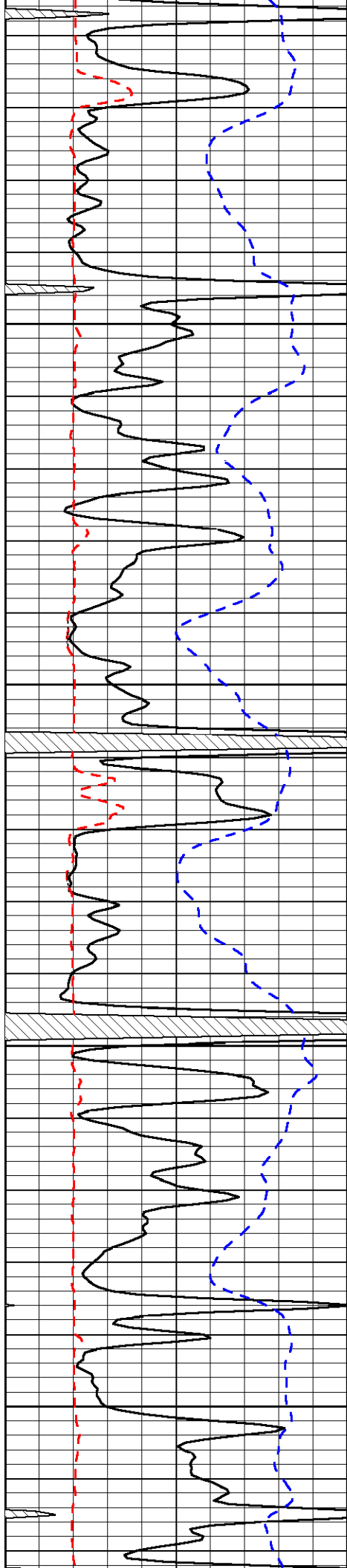
-33

-33

-34

-32

-32

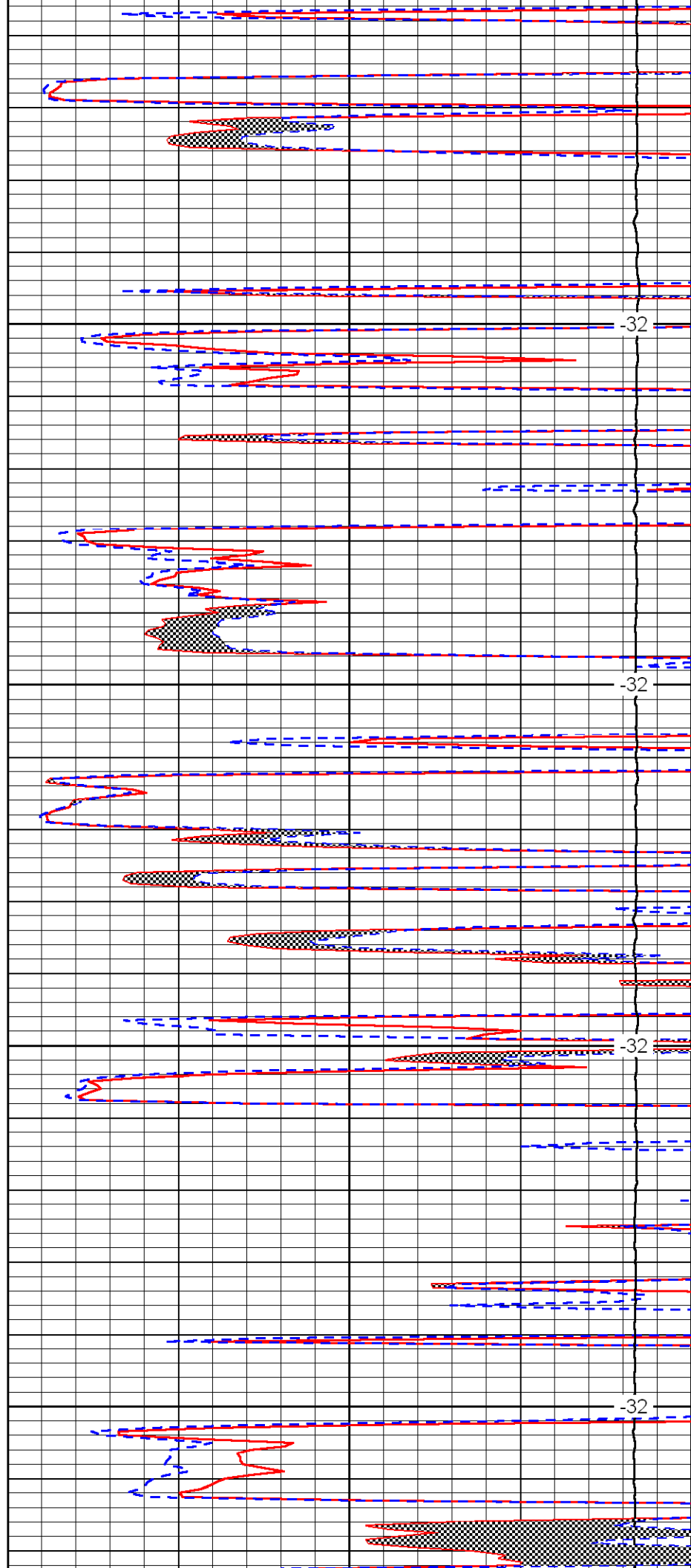


4150

4200

4250

4300

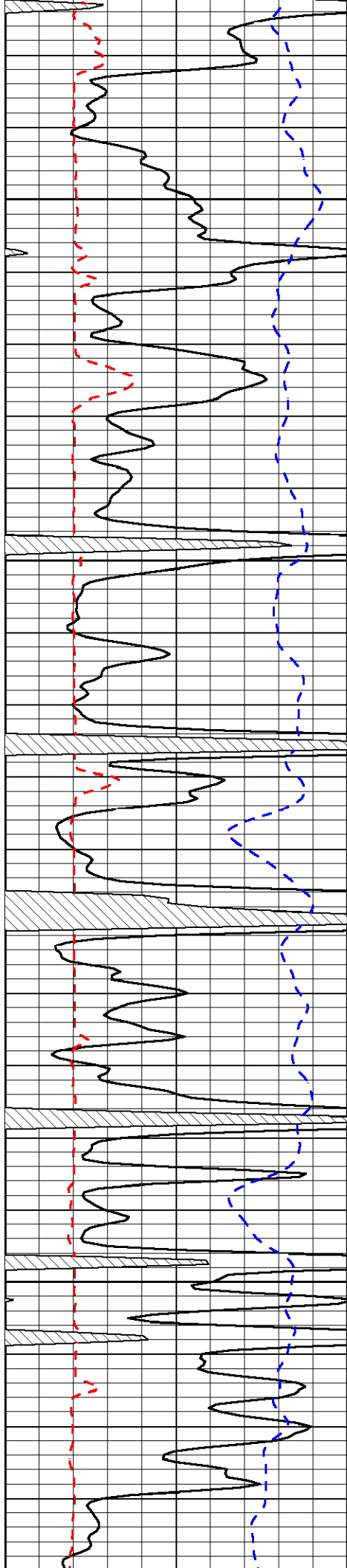


-32

-32

-32

-32

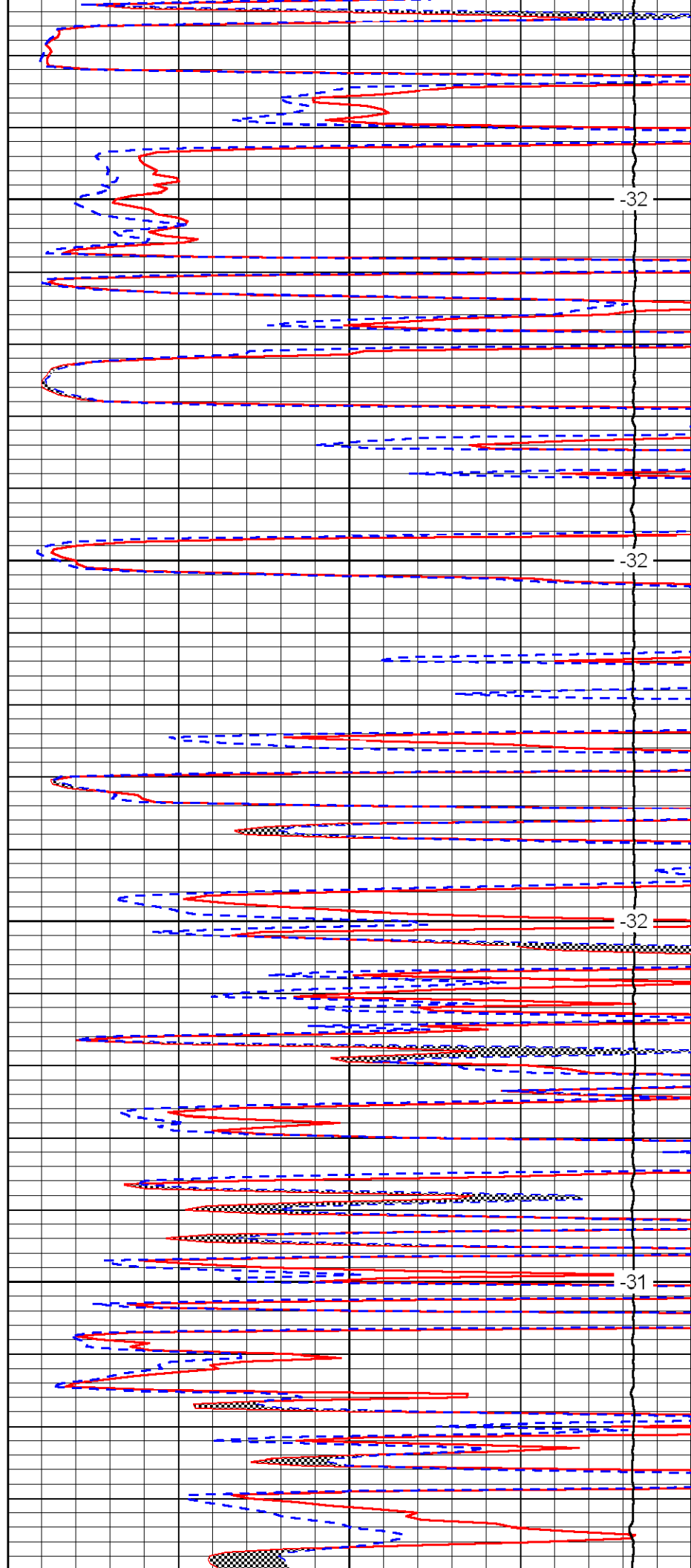


4350

4400

4450

4500

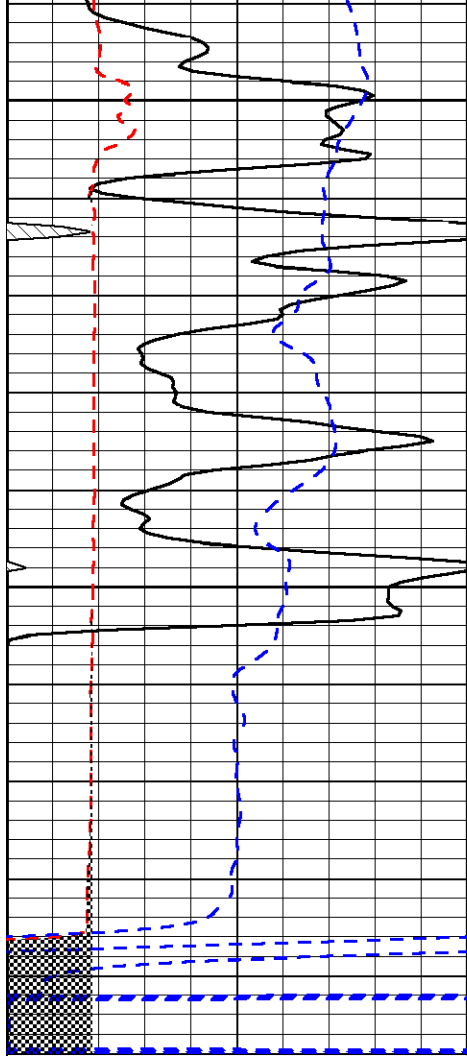


-32

-32

-32

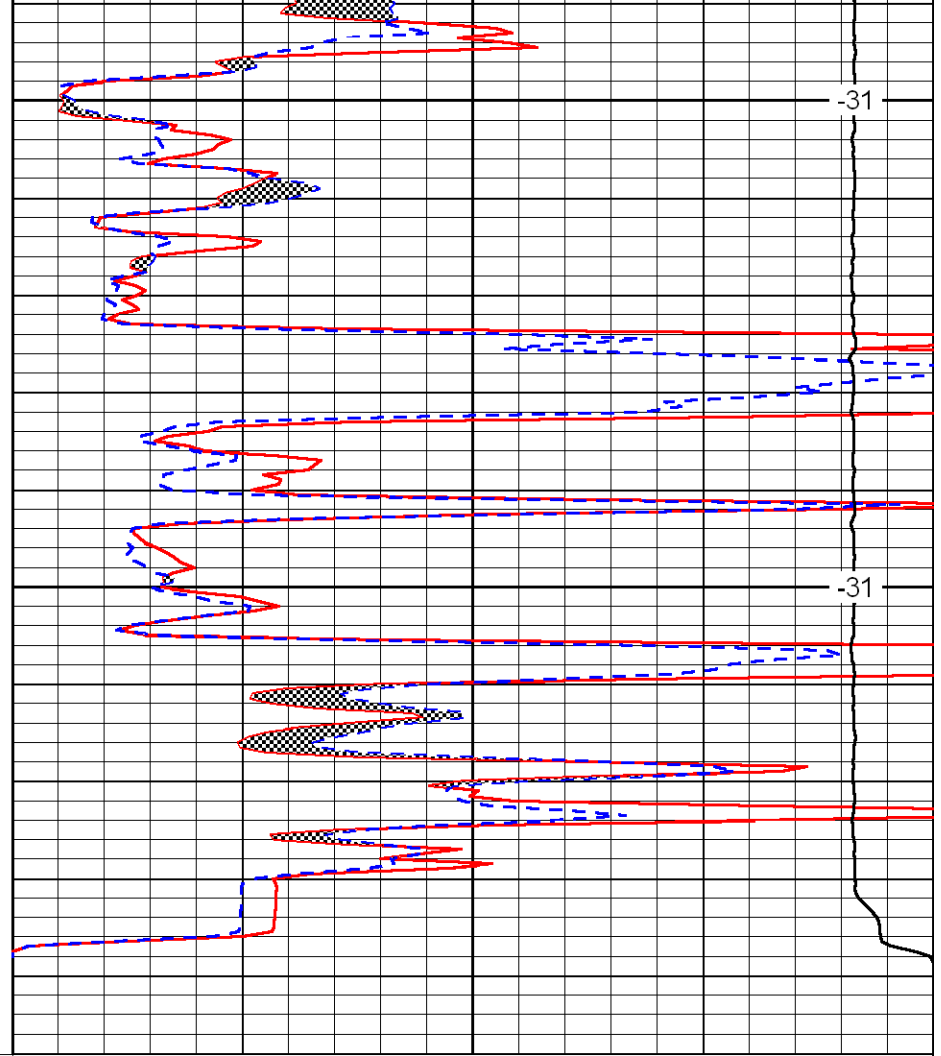
-31



0	Gamma Ray	150
6	Micro Log Caliper (in)	16
-200	SP (MV)	0

4550

4600



0	Micro Inverse 1 X 1 (Ohm-m)	40
0	Micro Normal 2" (Ohm-m)	40
15000	Line Weight (lb)	0

-31

-31

LSPD  
(ft/min)