



Dual Induction Log

DIGITAL LOG (785) 625-3858

API No.	15-101-22,199-00-00	
Company	Carmen Schmitt, Inc.	
Well	Wilkins No. 1	
Field	Wildcat	
County	Lane	State
		Kansas
Location	990' FNL & 2310' FWL	
Sec: 11	Twp: 17S	Rge: 30W
Permanent Datum	Ground Level	Elevation 2849
Log Measured From	Kelly Bushing	9 Ft. Above Perm. Datum
Drilling Measured From	Kelly Bushing	
		Other Services CNL/CDL MEL
		Elevation K.B. 2858 D.F. 2849 G.L. 2849

Date	11/24/2009
Run Number	One
Depth Driller	4630
Depth Logger	4632
Bottom Logged Interval	4631
Top Log Interval	200
Casing Driller	8.625 @ 223
Casing Logger	221
Bit Size	7.875
Type Fluid in Hole	Chemical
Salinity, ppm CL	2.500
Density / Viscosity	9.1 53
pH / Fluid Loss	9.0 8.0
Source of Sample	Flowline
Rm @ Meas. Temp	3.5 @ 70
Rmf @ Meas. Temp	2.625 @ 70
Rmc @ Meas. Temp	4.72 @ 70
Source of Rmf / Rmc	Charts
Rm @ BHT	1.97 @ 124
Operating Rig Time	3 Hours
Max Rec. Temp. F	124
Equipment Number	10
Location	Hays
Recorded By	Jason Wellbrock
Witnessed By	Tom Funk

<<< Fold Here >>>

All interpretations are opinions based on inferences from electrical or other measurements and we cannot and do not guarantee the accuracy or correctness of any interpretation, and we shall not, except in the case of gross or willful negligence on our part, be liable or responsible for any loss, costs, damages, or expenses incurred or sustained by anyone resulting from any interpretation made by any of our officers, agents or employees. These interpretations are also subject to our general terms and conditions set out in our current Price Schedule.

Comments

Thank you for using Log-Tech, Inc.
(785) 625-3858

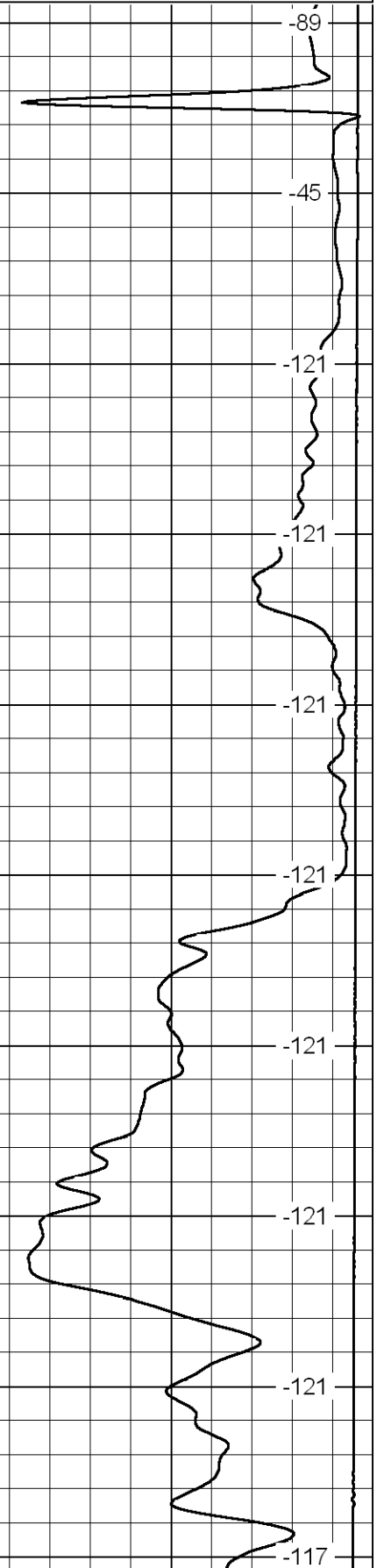
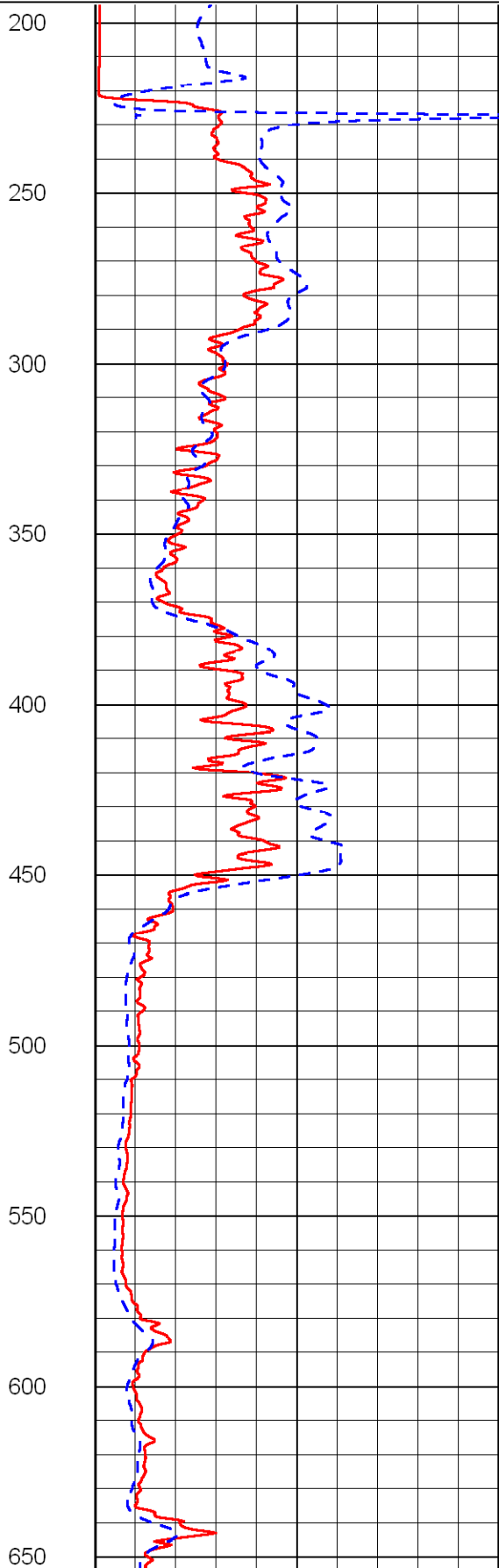
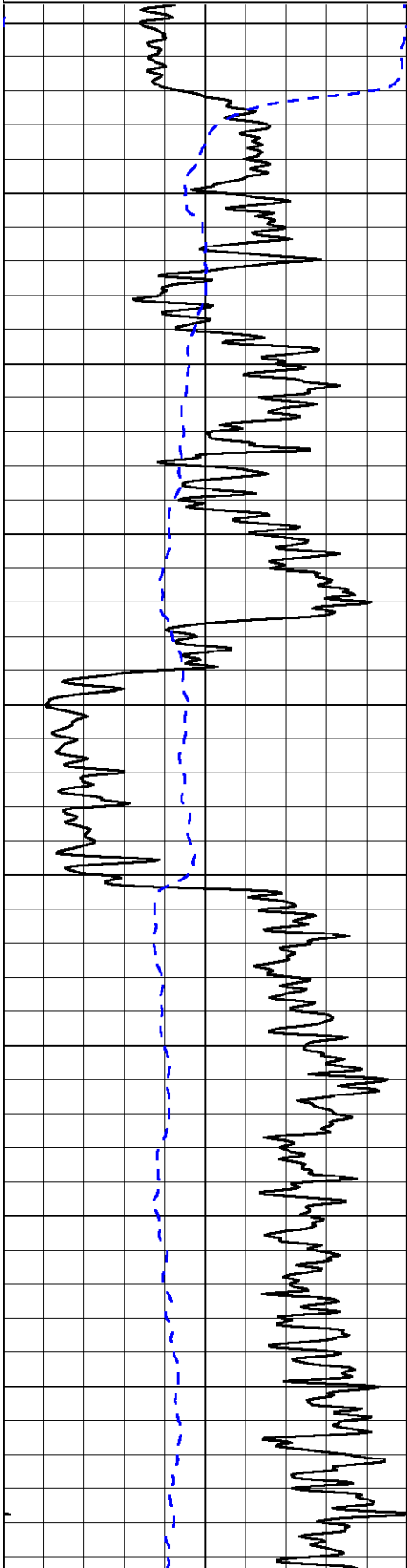
Healy 1/4 S, 3/4 E, S Into

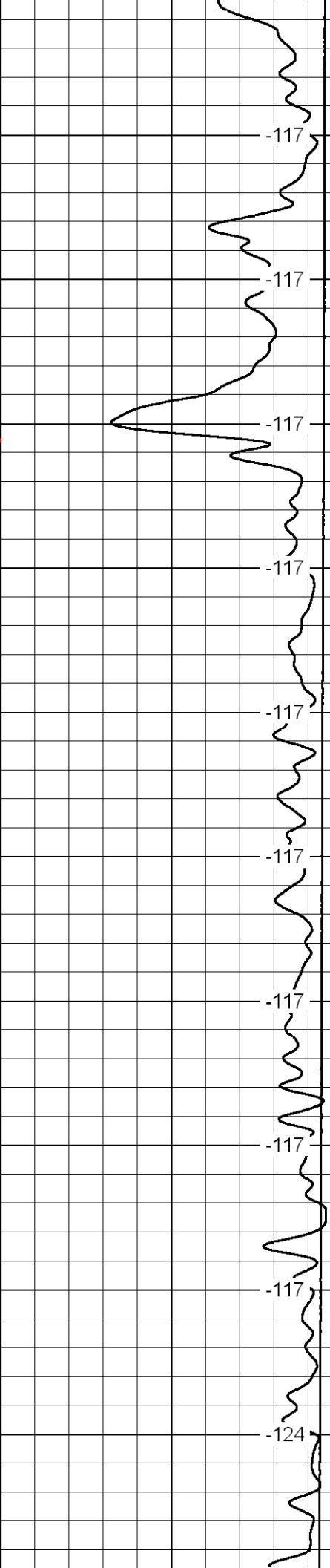
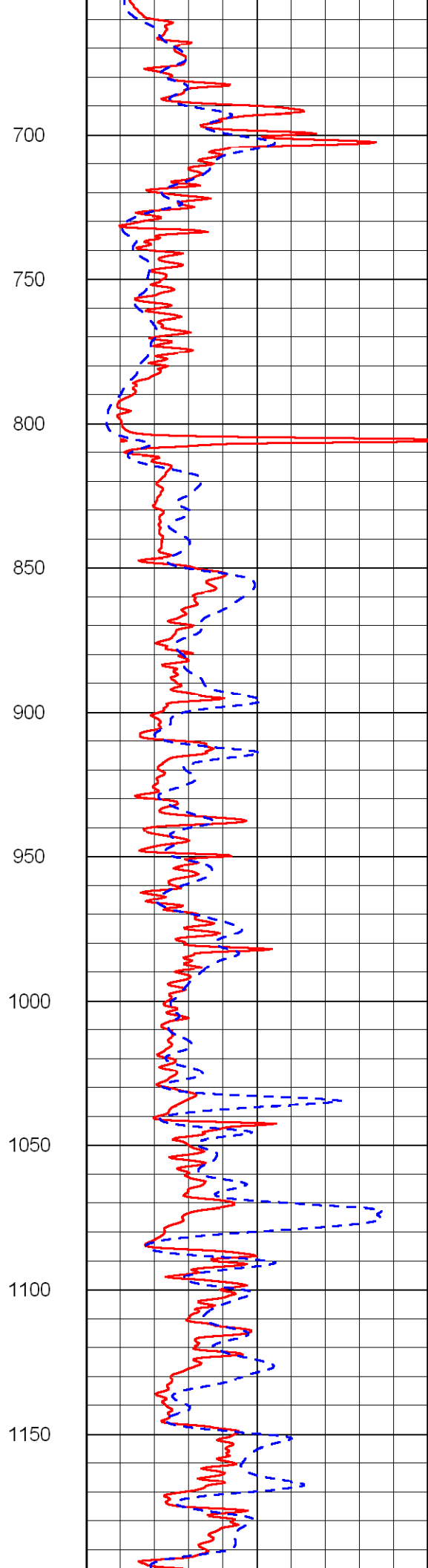
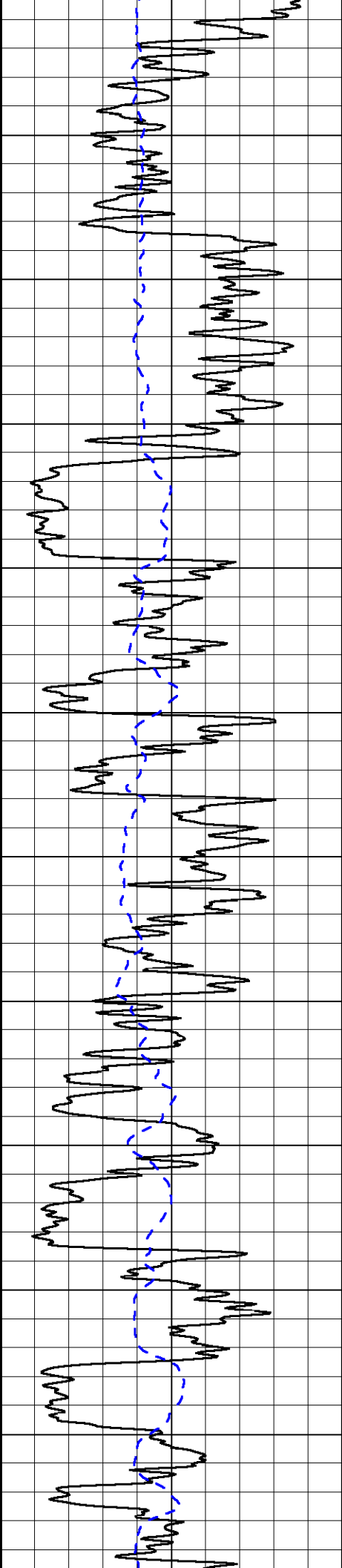
Database File: c:\warrior\data\carmen schmitt_wilkins no. 1\carmenhd.db
 Dataset Pathname: dil/carm2in
 Presentation Format: dil2in
 Dataset Creation: Wed Nov 25 01:41:00 2009
 Charted by: Depth in Feet scaled 1:600

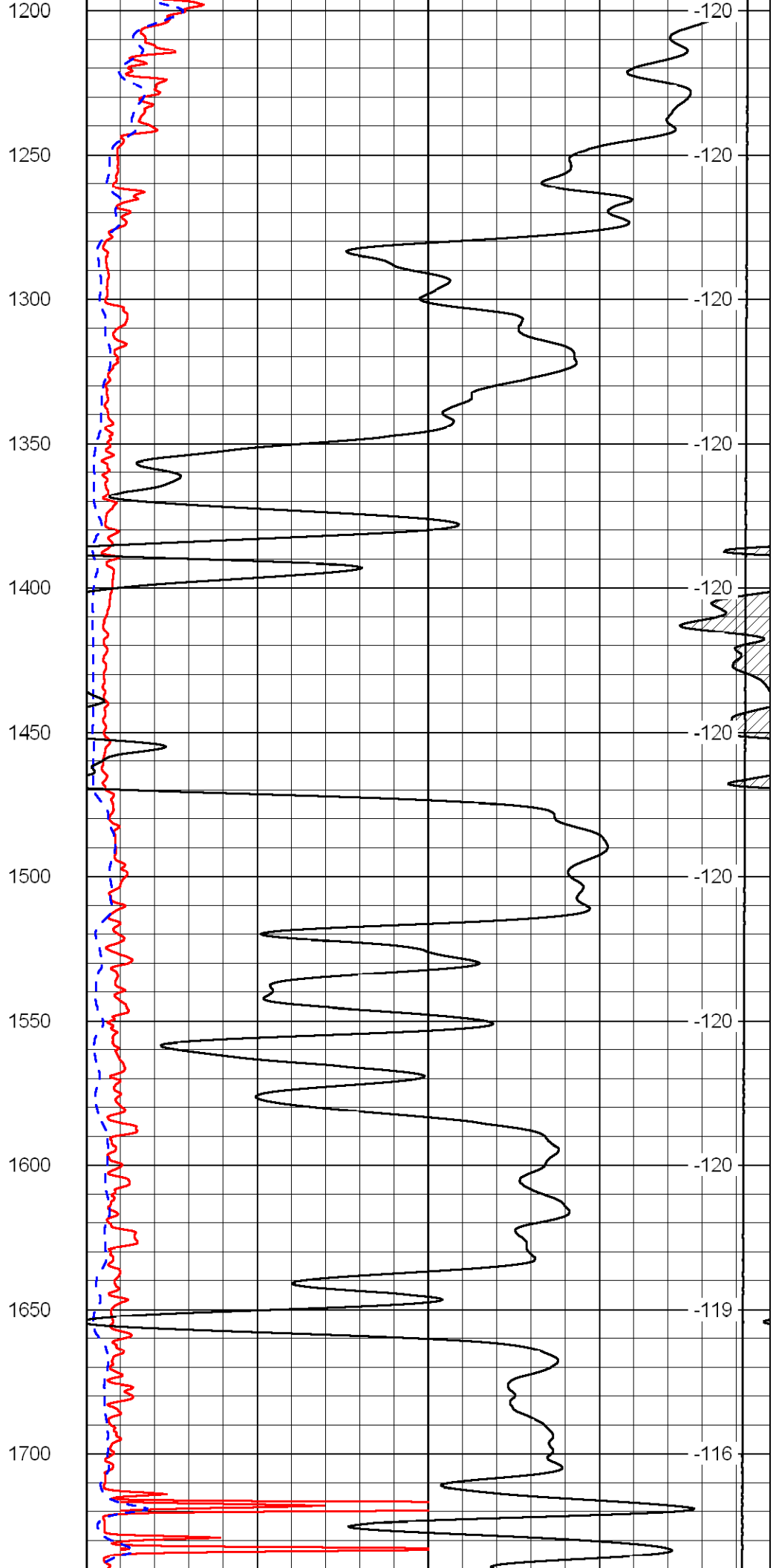
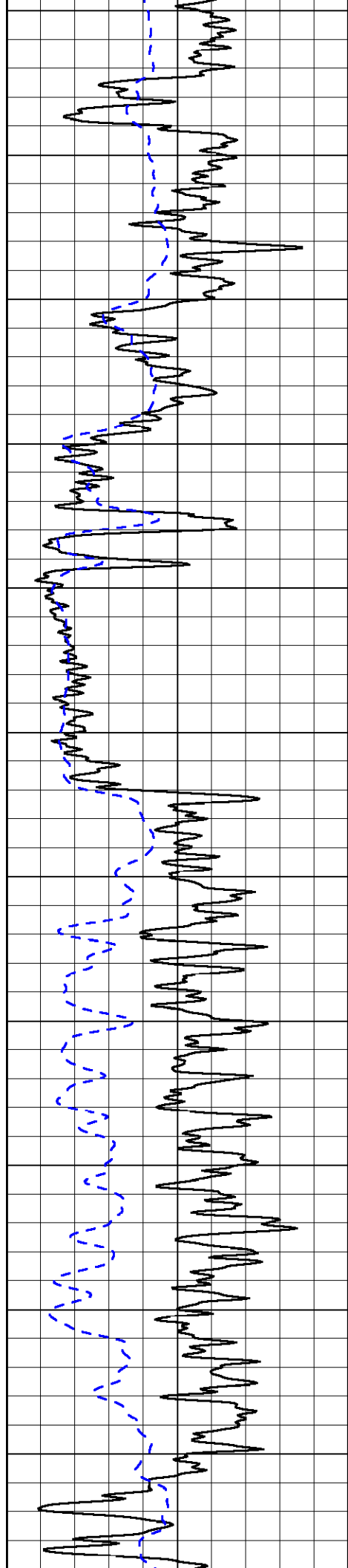
0 Gamma Ray 150
-200 SP (MV) 0

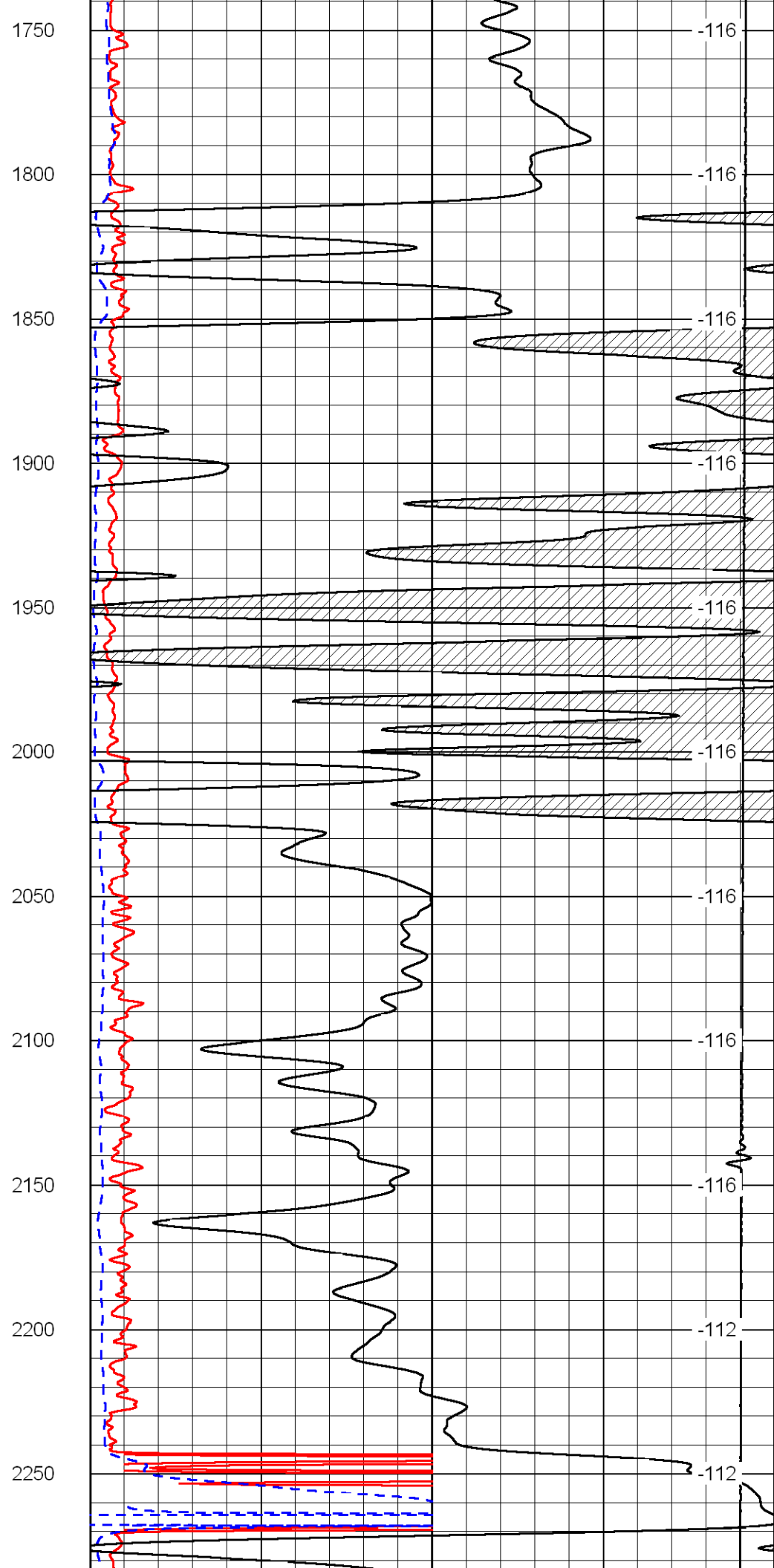
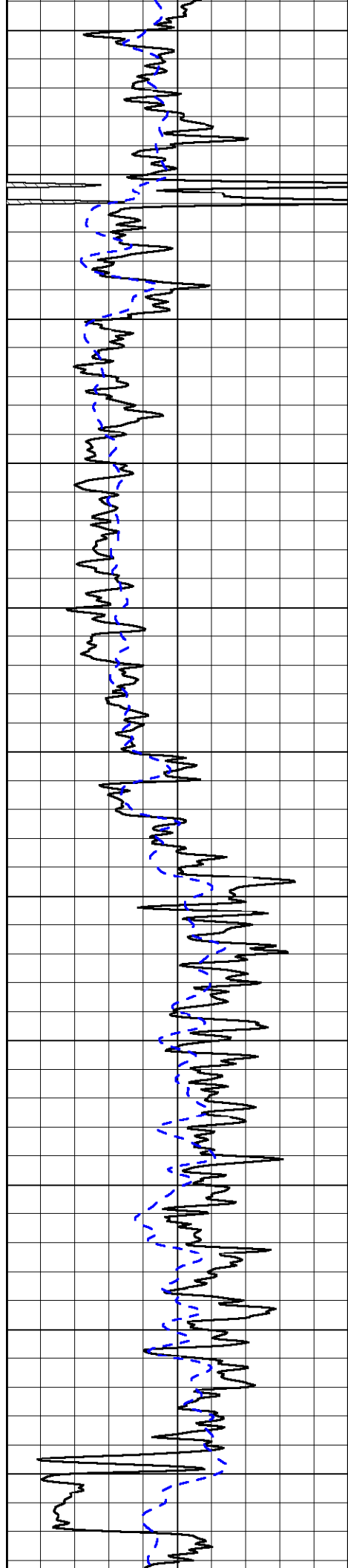
0 Shallow Resistivity (Ohm-m) 50
0 Deep Resistivity (Ohm-m) 50
1000 Conductivity (mmho/m) 0
15000 Line Tension (lb) 0
50 Shallow Resistivity (Ohm-m) 500
50 Deep Resistivity (Ohm-m) 500

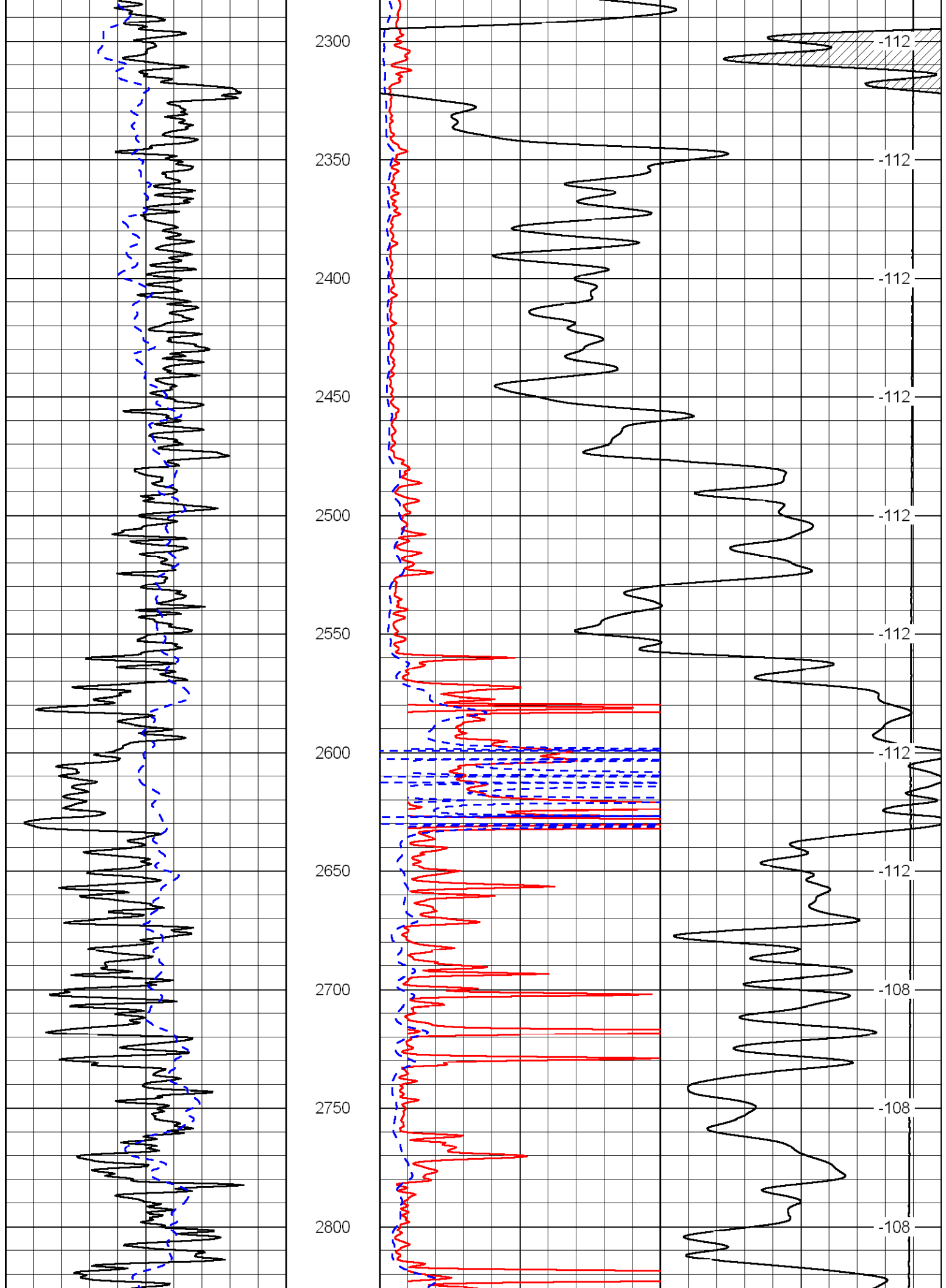
LSPD
(ft/min)

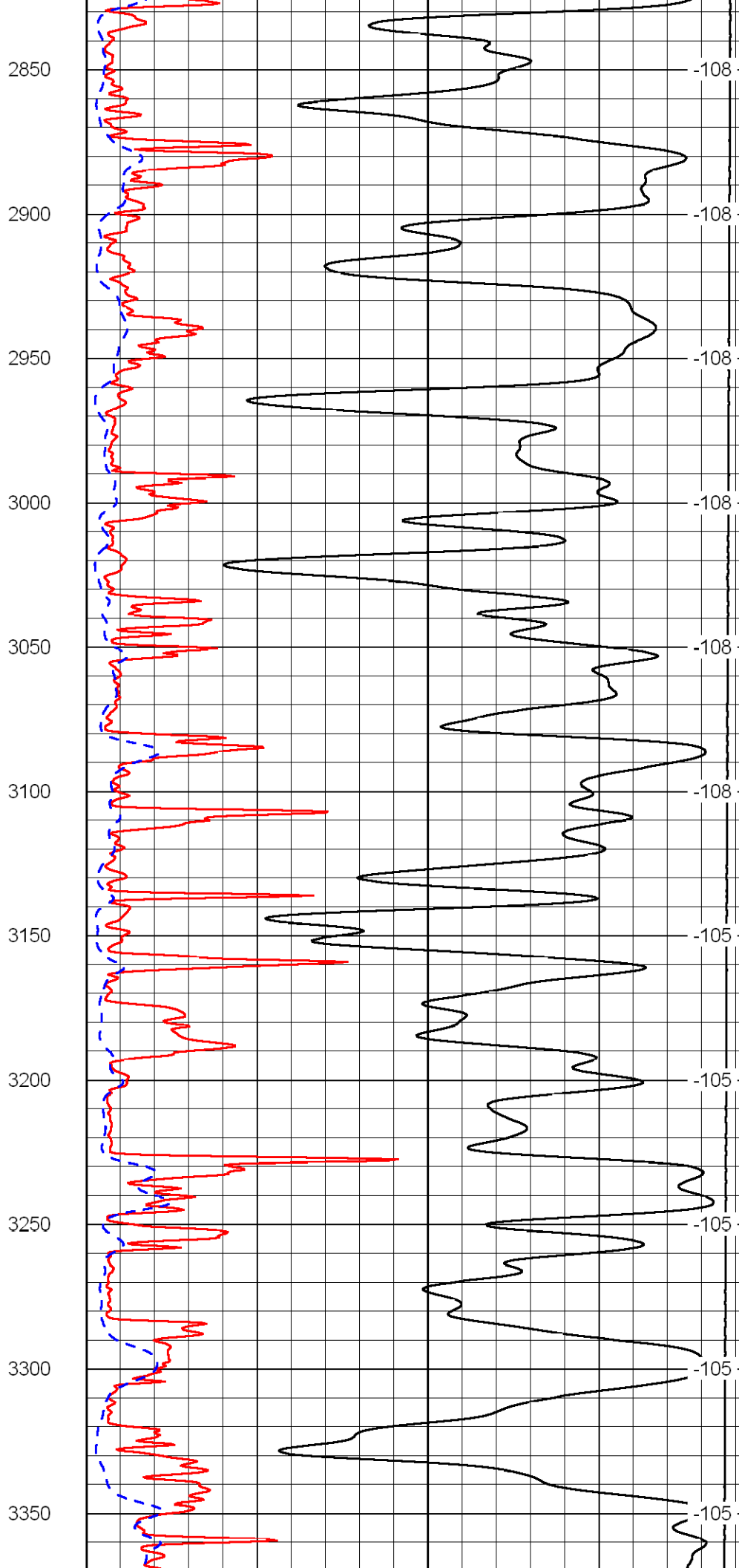
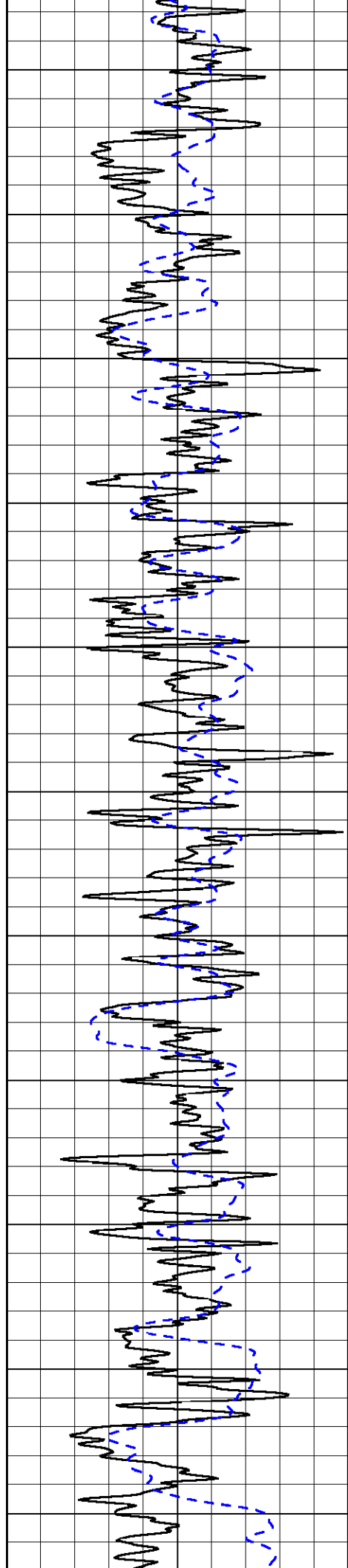


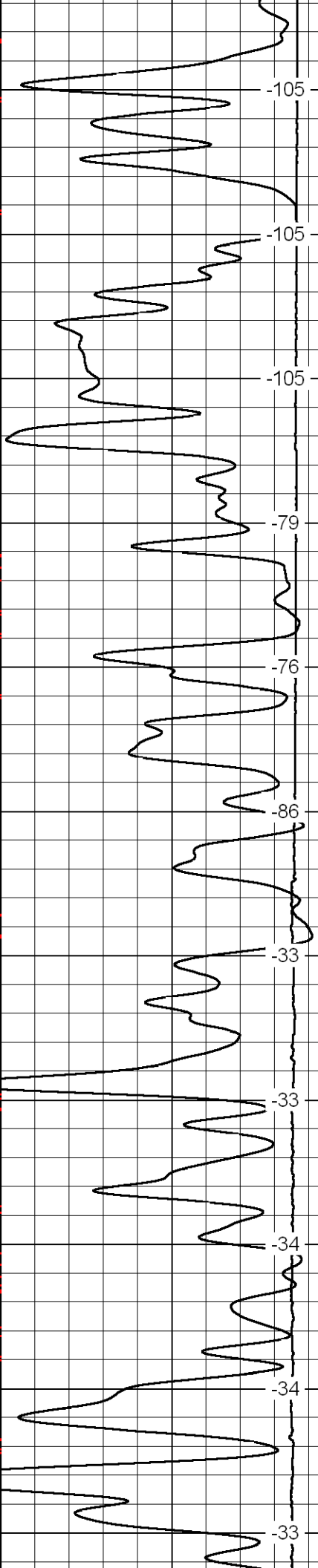
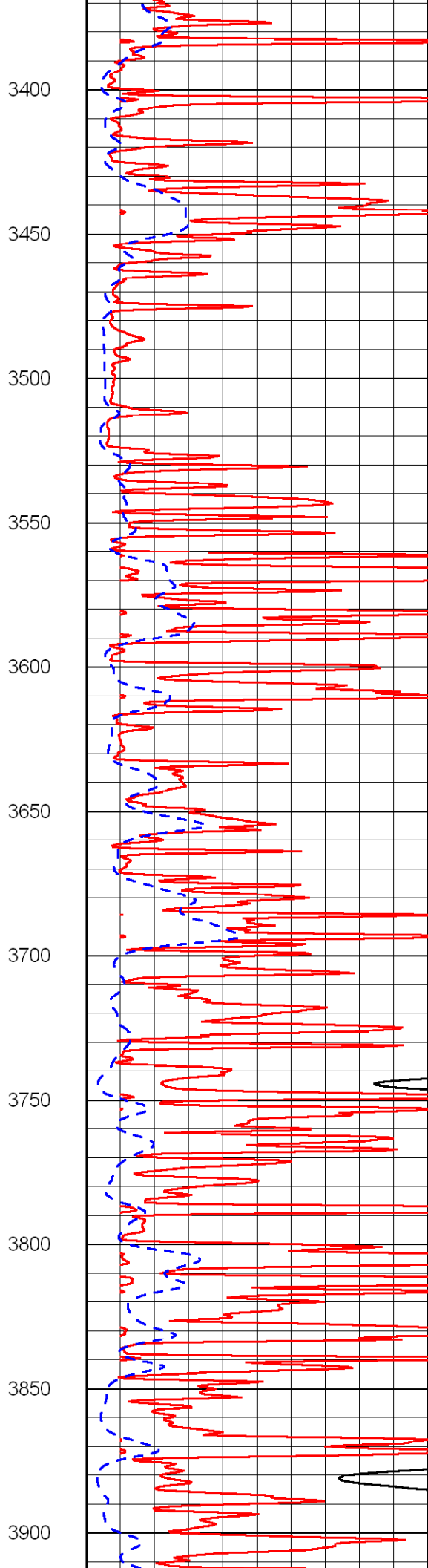
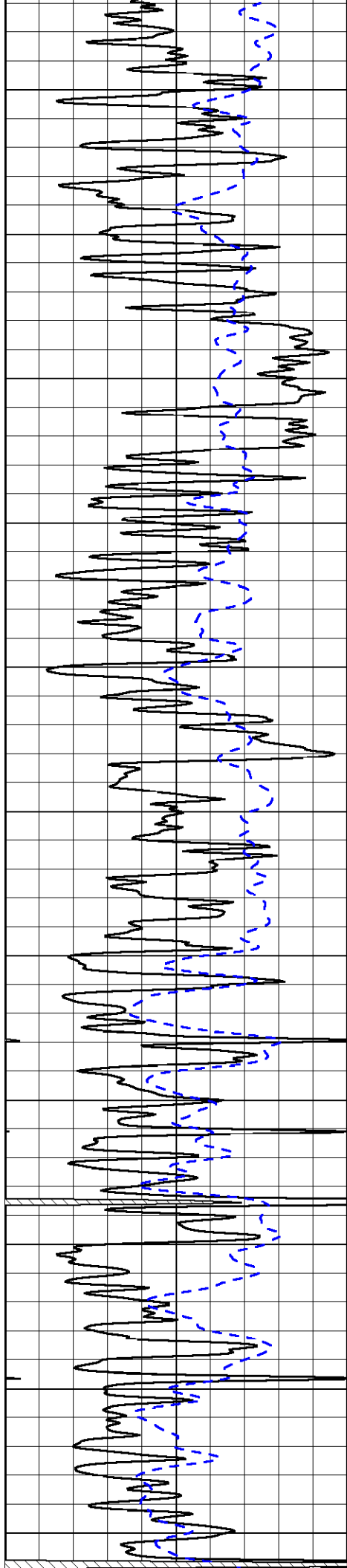


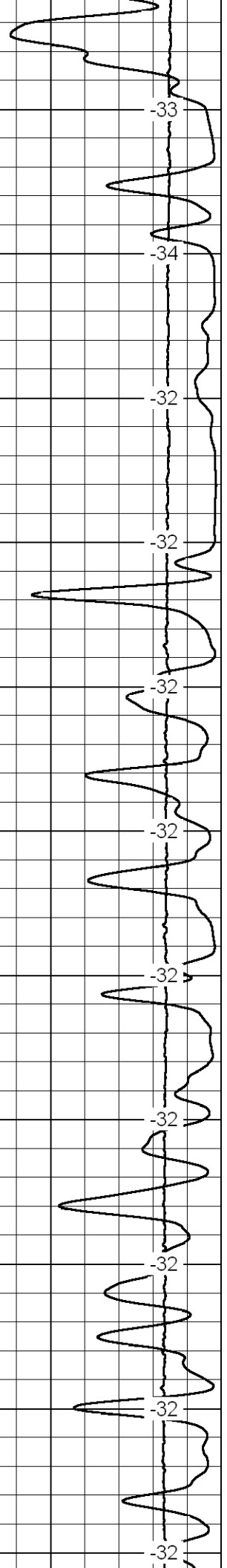
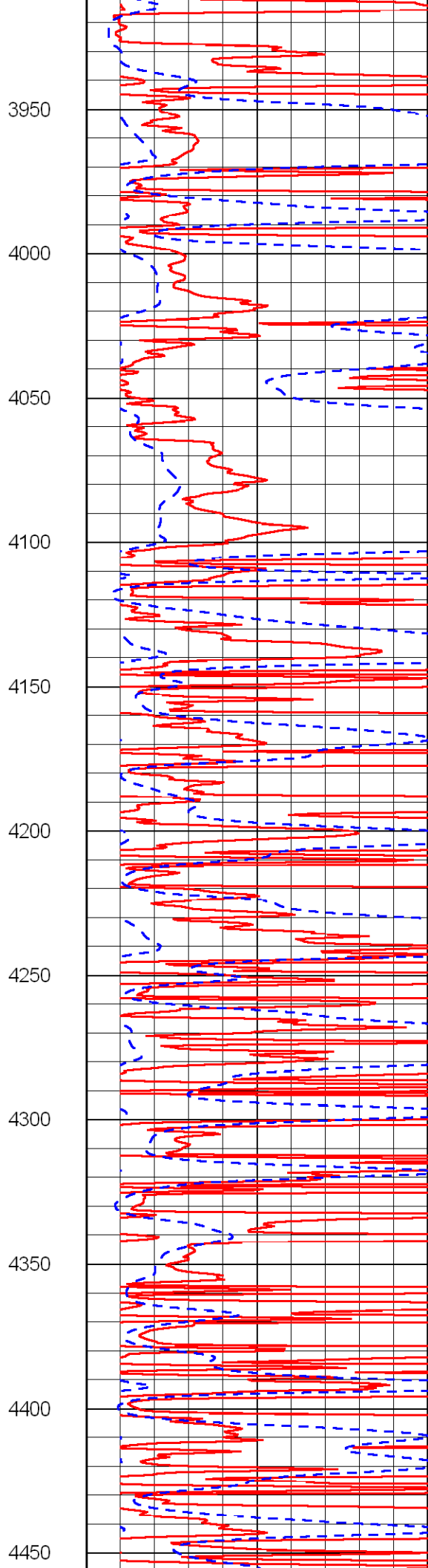
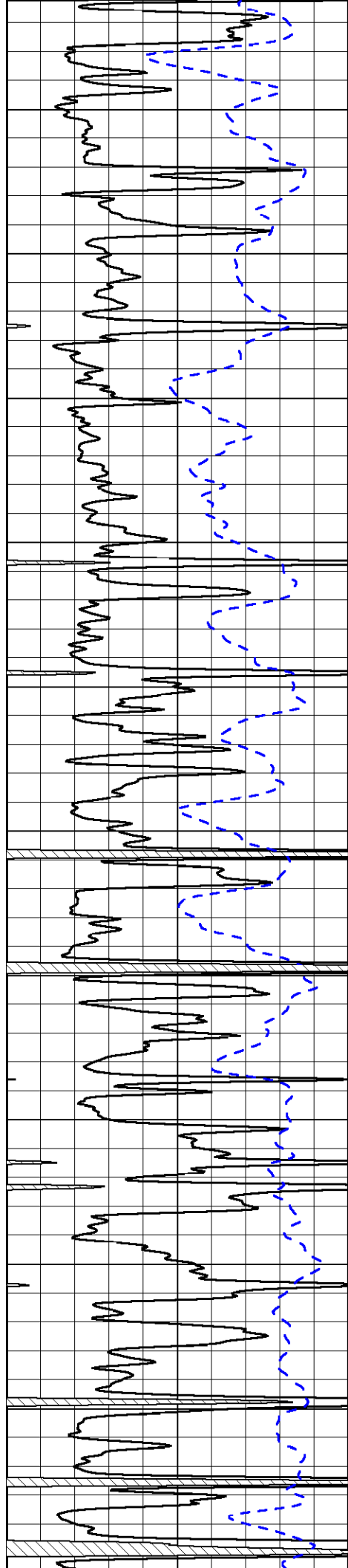


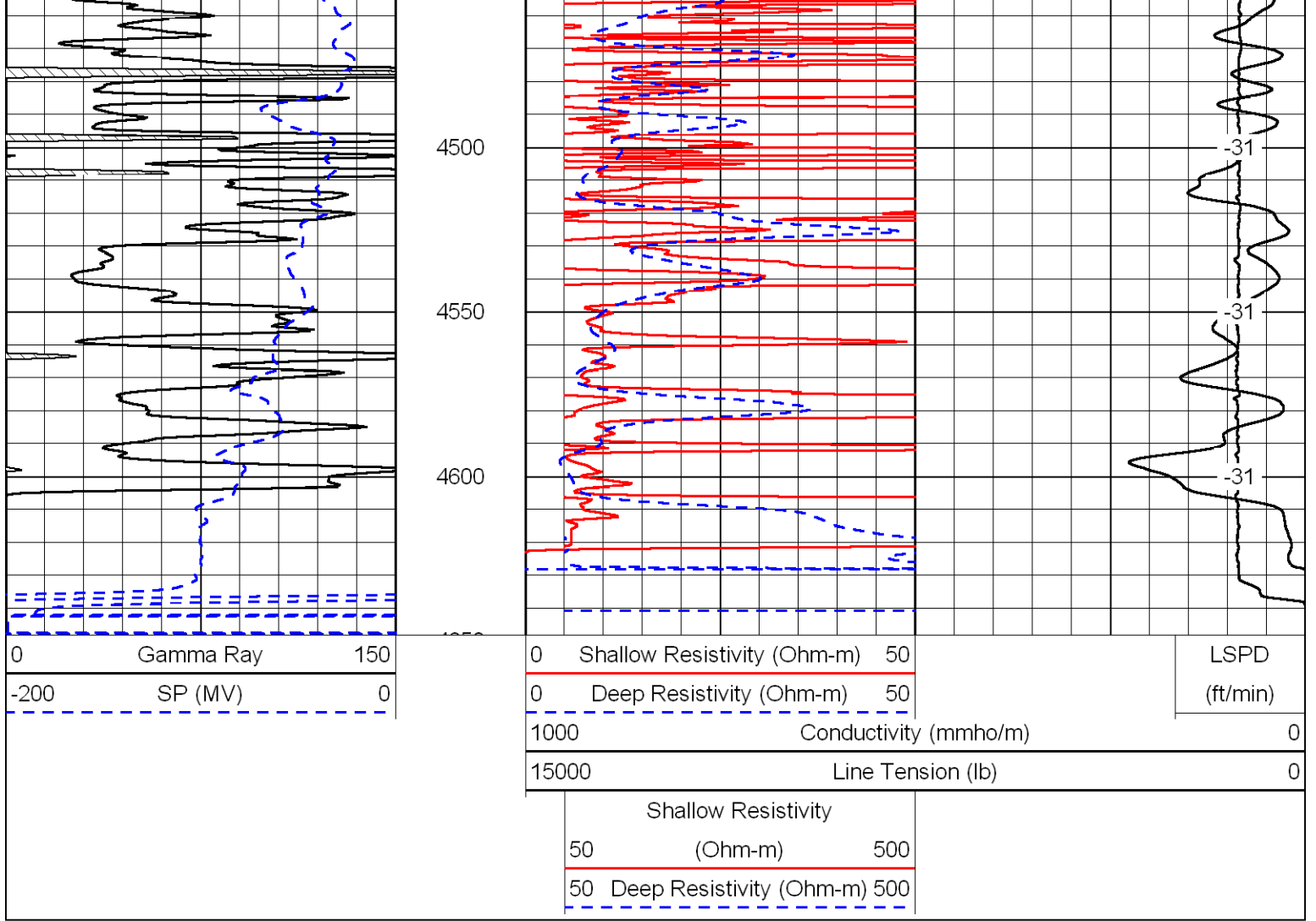




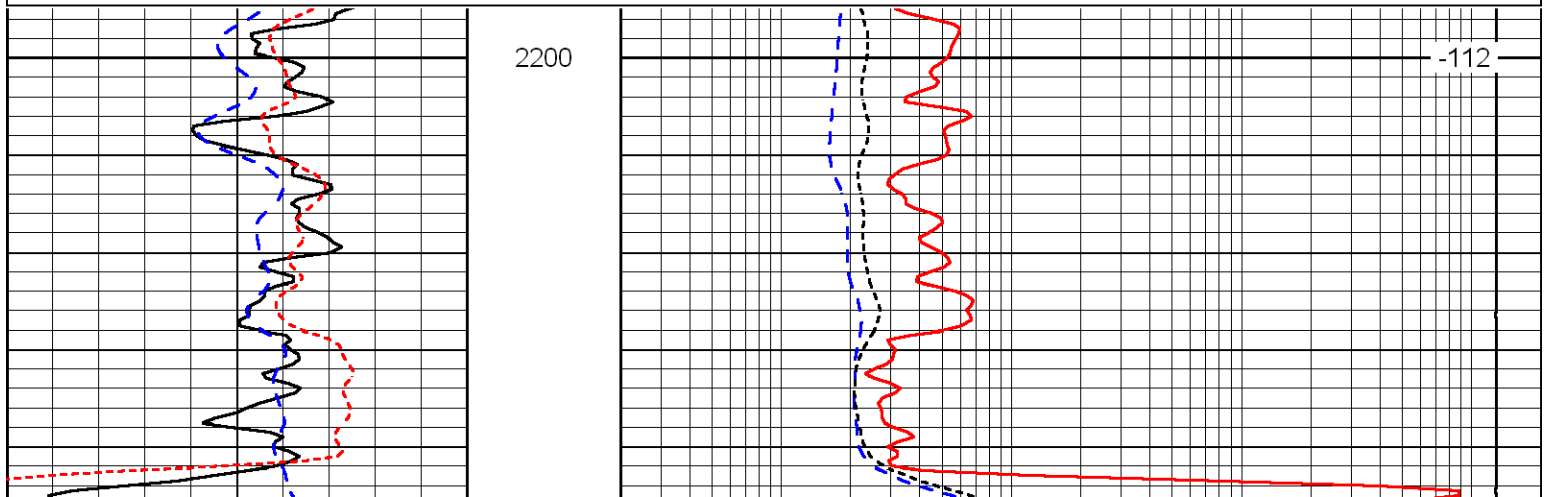
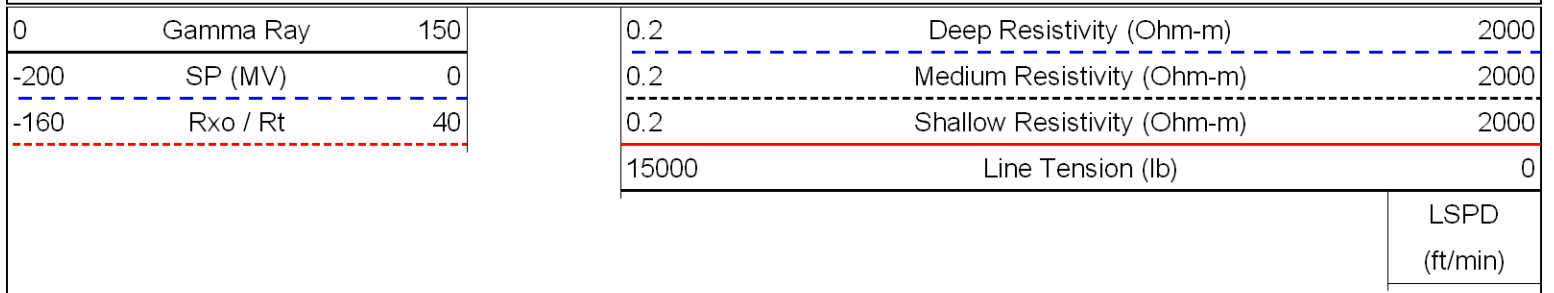


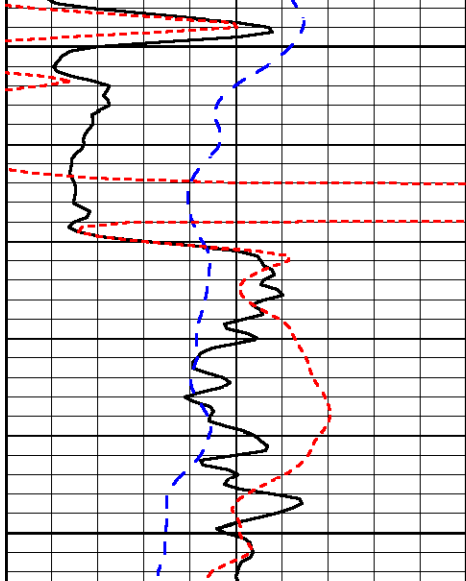






Database File: c:\warrior\data\carmen schmitt_wilkins no. 1\carmenhd.db
 Dataset Pathname: dil/carm2in
 Presentation Format: dil
 Dataset Creation: Wed Nov 25 01:41:00 2009
 Charted by: Depth in Feet scaled 1:240

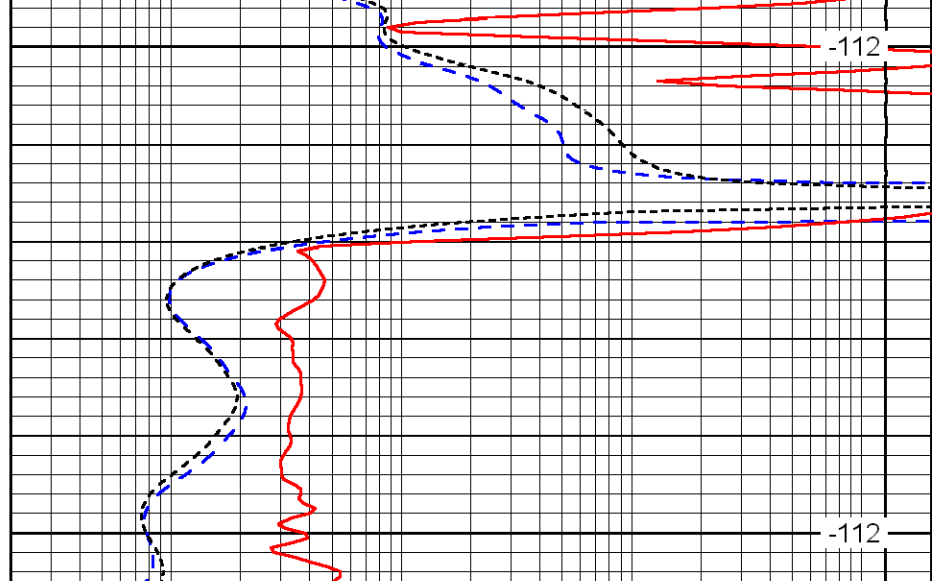




2250

2300

0	Gamma Ray	150
-200	SP (MV)	0
-160	Rxo / Rt	40



-112

-112

0.2	Deep Resistivity (Ohm-m)	2000
0.2	Medium Resistivity (Ohm-m)	2000
0.2	Shallow Resistivity (Ohm-m)	2000
15000	Line Tension (lb)	0

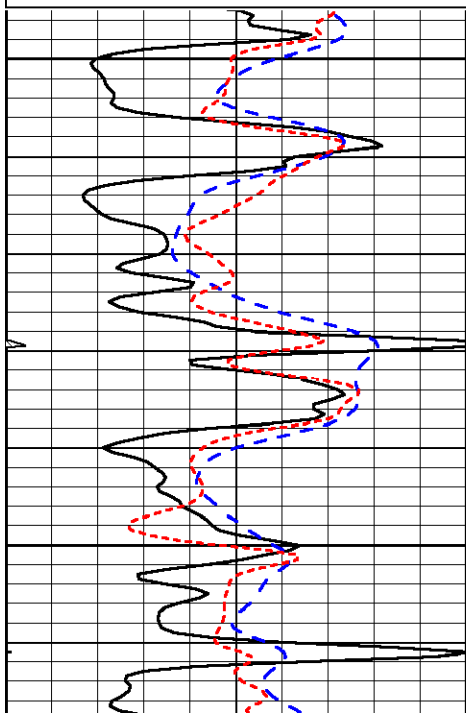
LSPD
(ft/min)

Database File: c:\warrior\data\carmen schmitt_wilkins no. 1\carmenhd.db
 Dataset Pathname: dil/carm2in
 Presentation Format: dil
 Dataset Creation: Wed Nov 25 01:41:00 2009
 Charted by: Depth in Feet scaled 1:240

0	Gamma Ray	150
-200	SP (MV)	0
-160	Rxo / Rt	40

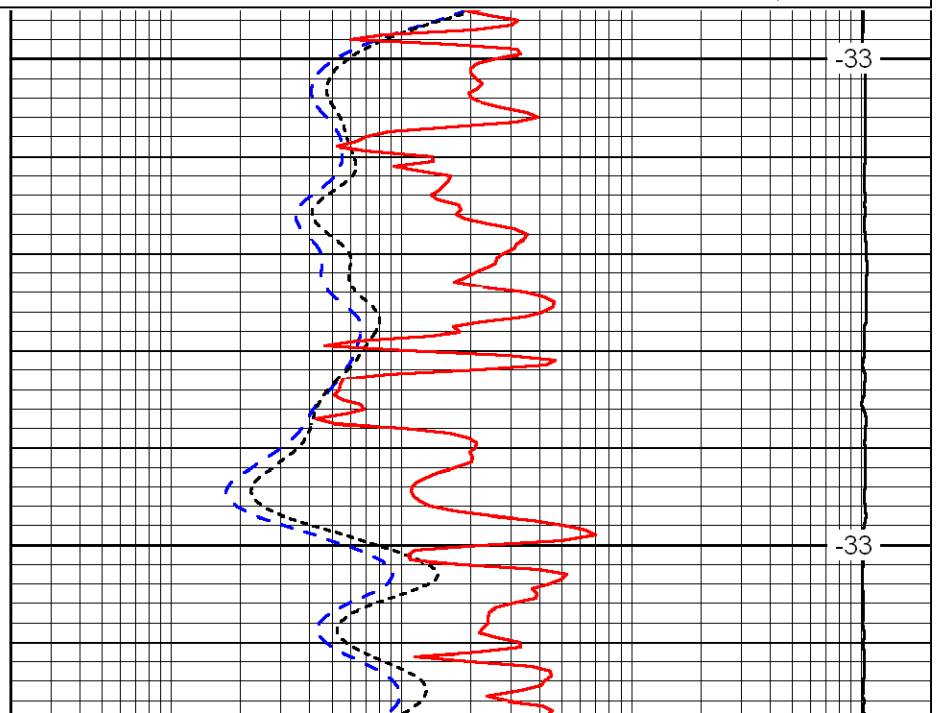
0.2	Deep Resistivity (Ohm-m)	2000
0.2	Medium Resistivity (Ohm-m)	2000
0.2	Shallow Resistivity (Ohm-m)	2000
15000	Line Tension (lb)	0

LSPD
(ft/min)



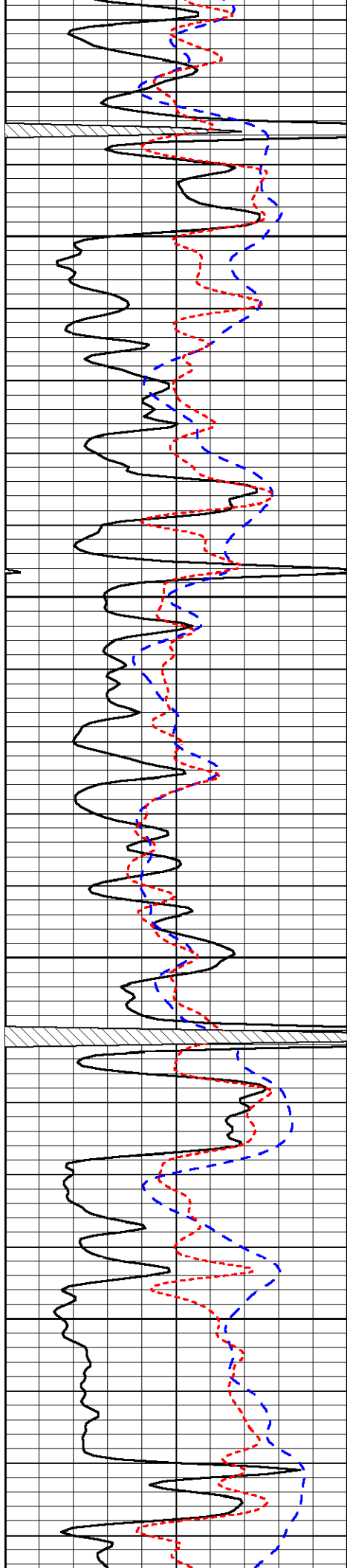
3700

3750



-33

-33

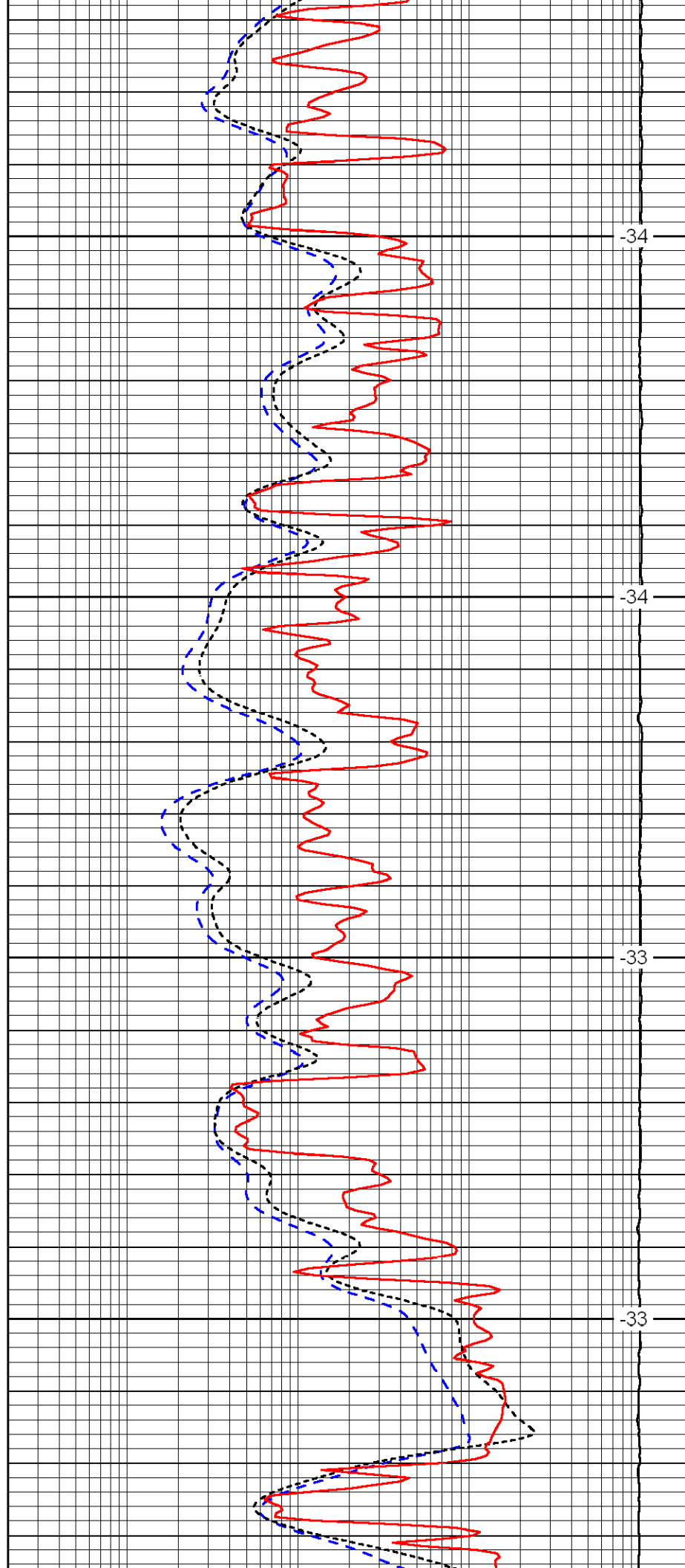


3800

3850

3900

3950

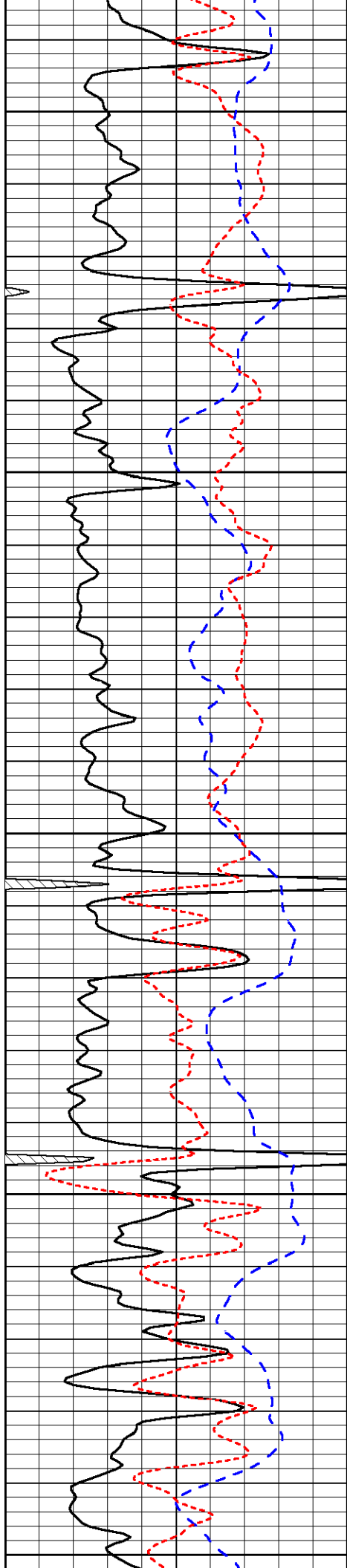


-34

-34

-33

-33



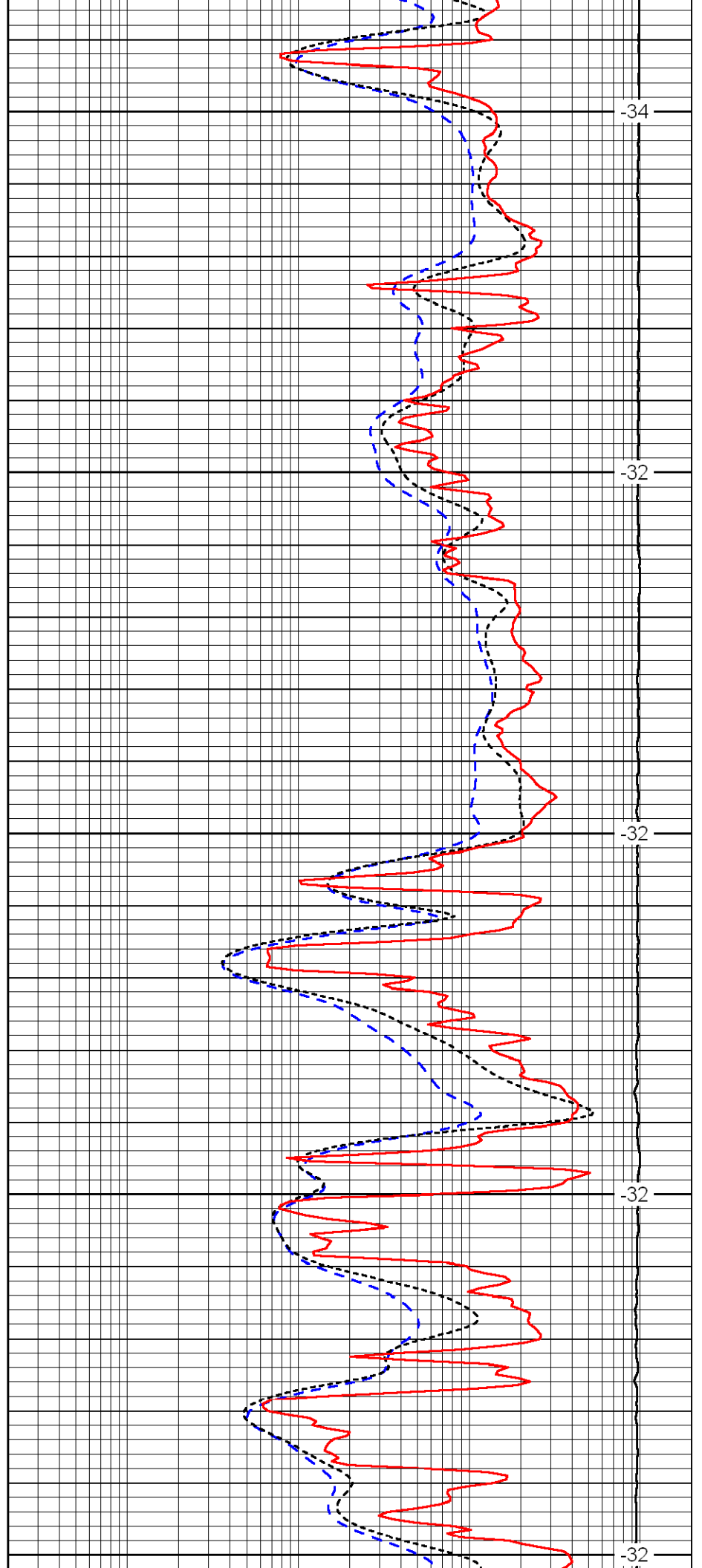
4000

4050

4100

4150

4200



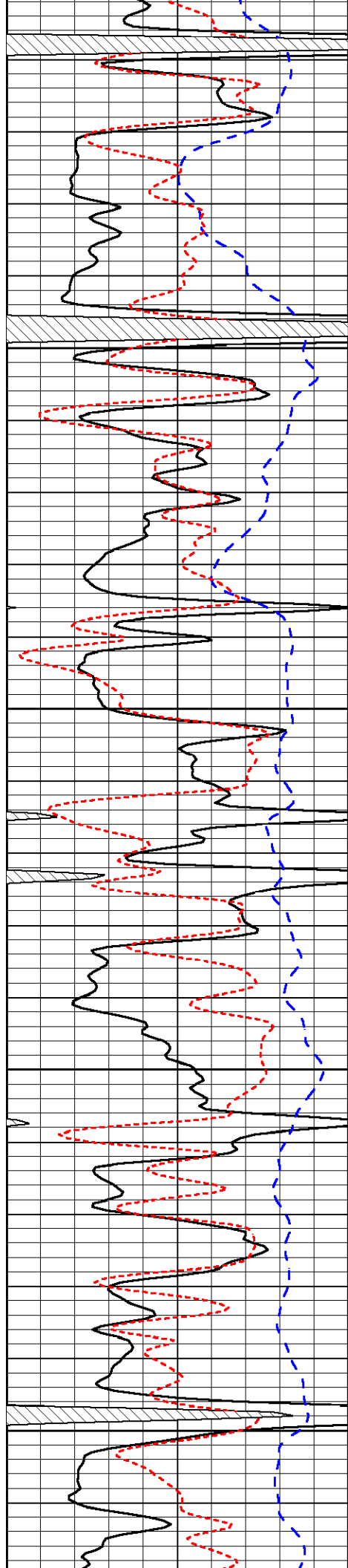
-34

-32

-32

-32

-32

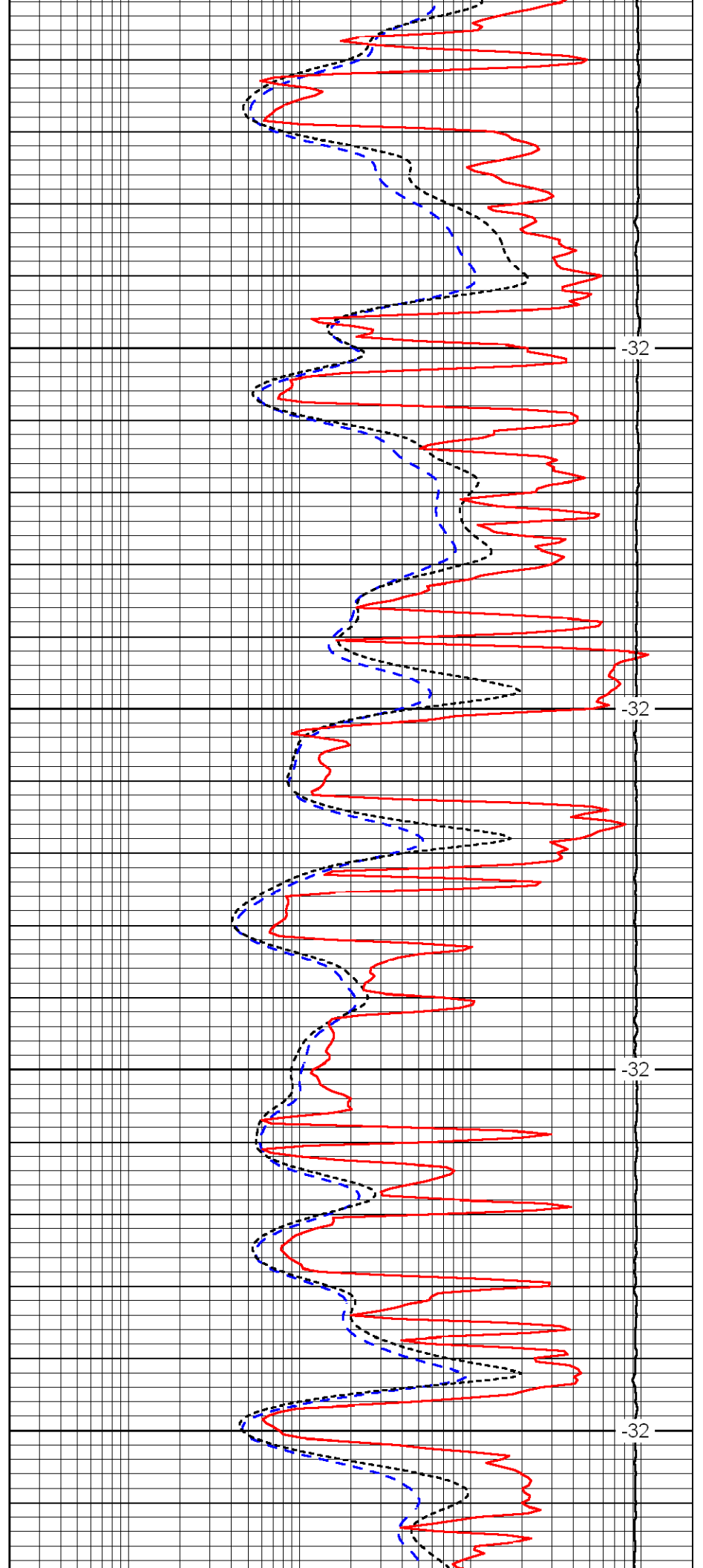


4250

4300

4350

4400

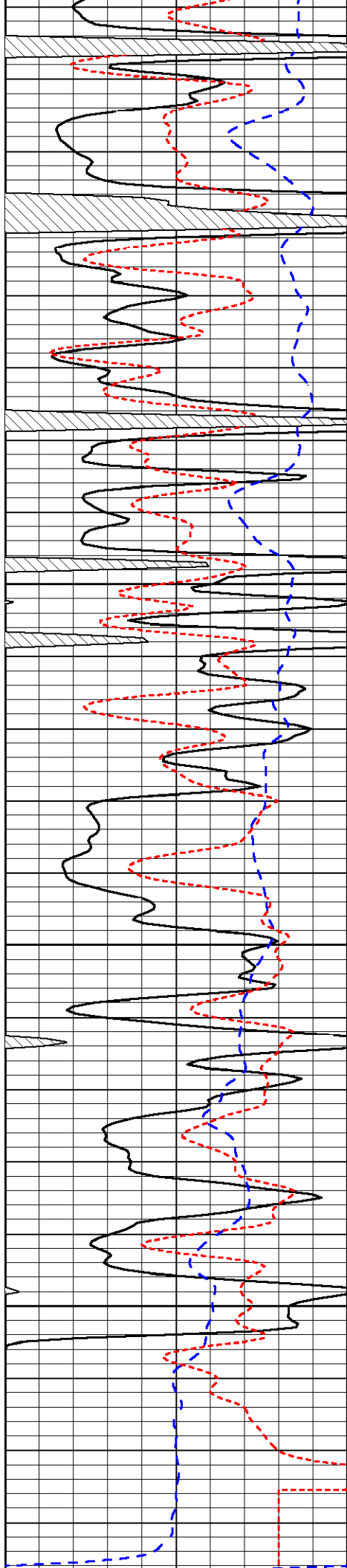


-32

-32

-32

-32

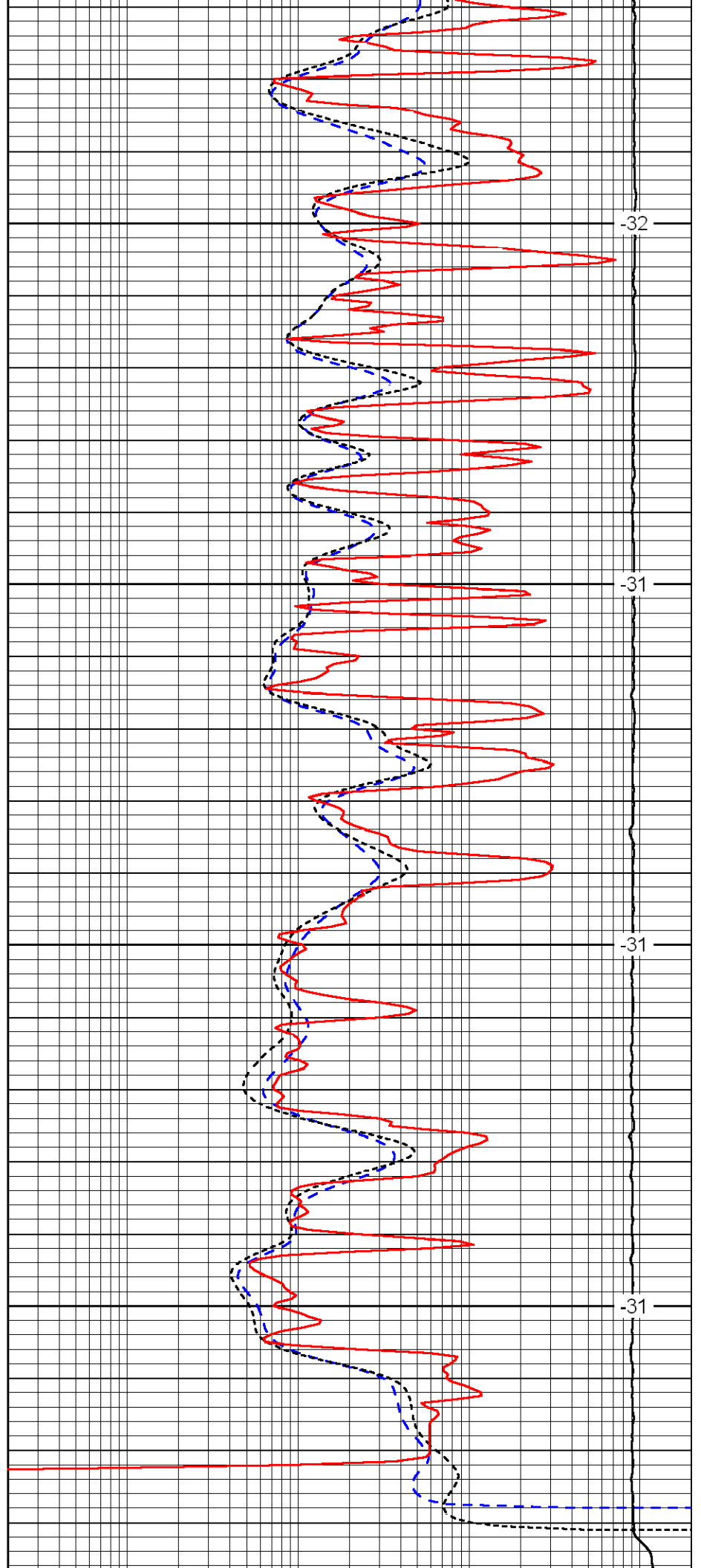


4450

4500

4550

4600



-32

-31

-31

-31

0	Gamma Ray	150
-200	SP (MV)	0
-160	Rxo / Rt	40

0.2	Deep Resistivity (Ohm-m)	2000
0.2	Medium Resistivity (Ohm-m)	2000
0.2	Shallow Resistivity (Ohm-m)	2000
15000	Line Tension (lb)	0

LSPD (ft/min)
