

MIDWEST SURVEYS
 LOGGING - PERFORATING - CONSULTING SERVICES
 P.O. Box 98, Osawatomie, KS 66064
 816-733-2728

GAMMA RAY / NEUTRON / CCL

Company: **Dennis & Peggy Hodges**
 Well: **Hodges No-1**
 Field: **Hatch N.E.**
 County: **Coffey** State: **Kansas**

Location: **2420 FNL & 330 FWL**
 Sec: **12** Twp: **21S** Rge: **13E**
 Permian Basin GL Elev: **1136'**
 Log Measured From GL Elev: **K 8 1142'**
 Logging Measure From NSB 5' From GL Elev: **GL 1136'**

Date: **05-05-2011**
 Run Number: **1199.0**
 Depth Logger: **1772.4**
 Depth Special: **1772.4**
 Total Depth: **2010**
 Fluid: **Oil**

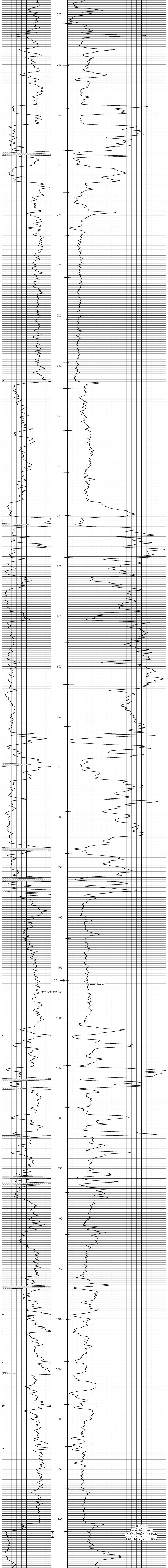
Type Field	Value
Depth / Visosity	NA
Sample - FPLD	NA
Max recorded Temp	0.0
Estimated Cement Top	0.0
Equipment No	107 - Characteric
Location	Stew-Willich
Recorded By	Dennis Hodges
Revised By	
BOREHOLE RECORD	
Run	FROM TO
One	12.25' 40.0'
Two	6.75' 2180.0'
CASING RECORD	
Size	WGHT. FROM TO
One	6.50" 0.0' 40.0'
Two	4.50" 0.0' 1780.0'

All interpretations are opinions based on inferences from electrical or other measurements and we cannot and do not guarantee the accuracy or correctness of any interpretation, and we shall not, except in the case of gross or willful negligence on our part, be liable or responsible for any loss, costs, damages, or expenses incurred or sustained by anyone resulting from any interpretation made by any of our officers, agents or employees. These interpretations are also subject to our general terms and conditions set out in our current Price Schedule.

Comments

Drilling Contractor :
 Skyry Drilling, LLC
 Rig No. - 1

Database File: hedges1.db
 Dataset Pathname: pass1
 Presentation Format: gr-n-ccl
 Dataset Creation: Tue Aug 09 09:41:49 2011 by Log Std Casedhole 07122
 Charted by: Depth in Feet scaled 1:240



08-06-2011
 Perforated Interval
 1712.0 - 1718.0 19 Perfs
 3 3/8" DP 23 Gr. T. ECG