



SUPERIOR
Hays,
Kansas

SONIC
LOG

Company ANDERSON ENERGY, INC.
Well MUNSCH #5
Field RUDER NORTH
County ELLIS State KANSAS

Location: 1330' FSL & 330' FEL
65' NW OF
E/2 - E/2 -SE/4
SEC 5 TWP 15S RGE 18W
API #: 15-051-25894-0000
Other Services
CDL/CNL
DIL
Elevation
K.B. 2003
D.F. 2001
G.L. 2011

Date	10/15/09		
Run Number	TWO		
Depth Driller	3690		
Depth Logger	3693		
Bottom Logged Interval	3683		
Top Log Interval	200		
Casing Driller	8 5/8" @ 222'		
Casing Logger	222'		
Bit Size	7 7/8		
Type Fluid In Hole	CHEMICAL MUD		
Density / Viscosity	9.3 / 57	CHLORIDES 4,500	
pH / Fluid Loss	9.2 / 10.0		
Source of Sample	FLOWLINE		
Rm @ Meas. Temp	0.85 @ 64F		
Rmf @ Meas. Temp	0.64 @ 64F		
Rmc @ Meas. Temp	1.11 @ 64F		
Source of Rmf / Rmc	CAL/CAL		
Rm @ BHT	0.48 @ 113F		
Time Circulation Stopped	2 HOURS		
Time Logger on Bottom			
Maximum Recorded Temperature	113F		
Equipment Number	680		
Location	HAYS, KS		
Recorded By	JEFF GRONEWEG		
Witnessed By	CURTIS COVEY		

<<< Fold Here >>>

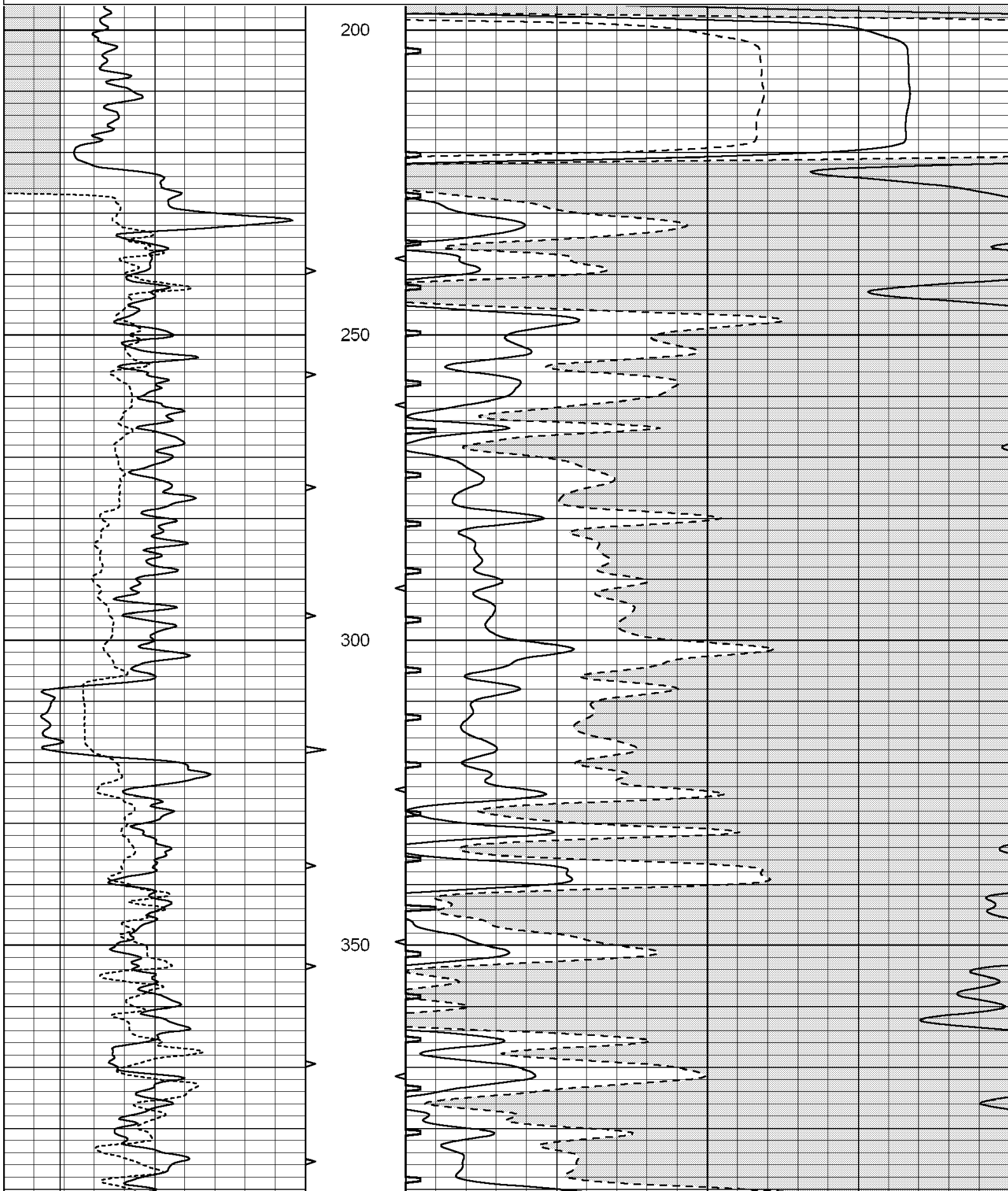
All interpretations are opinions based on inferences from electrical or other measurements and we cannot and do not guarantee the accuracy or correctness of any interpretation, and we shall not, except in the case of gross or willful negligence on our part, be liable or responsible for any loss, costs, damages, or expenses incurred or sustained by anyone resulting from any interpretation made by any of our officers, agents or employees. These interpretations are also subject to our general terms and conditions set out in our current Price Schedule.

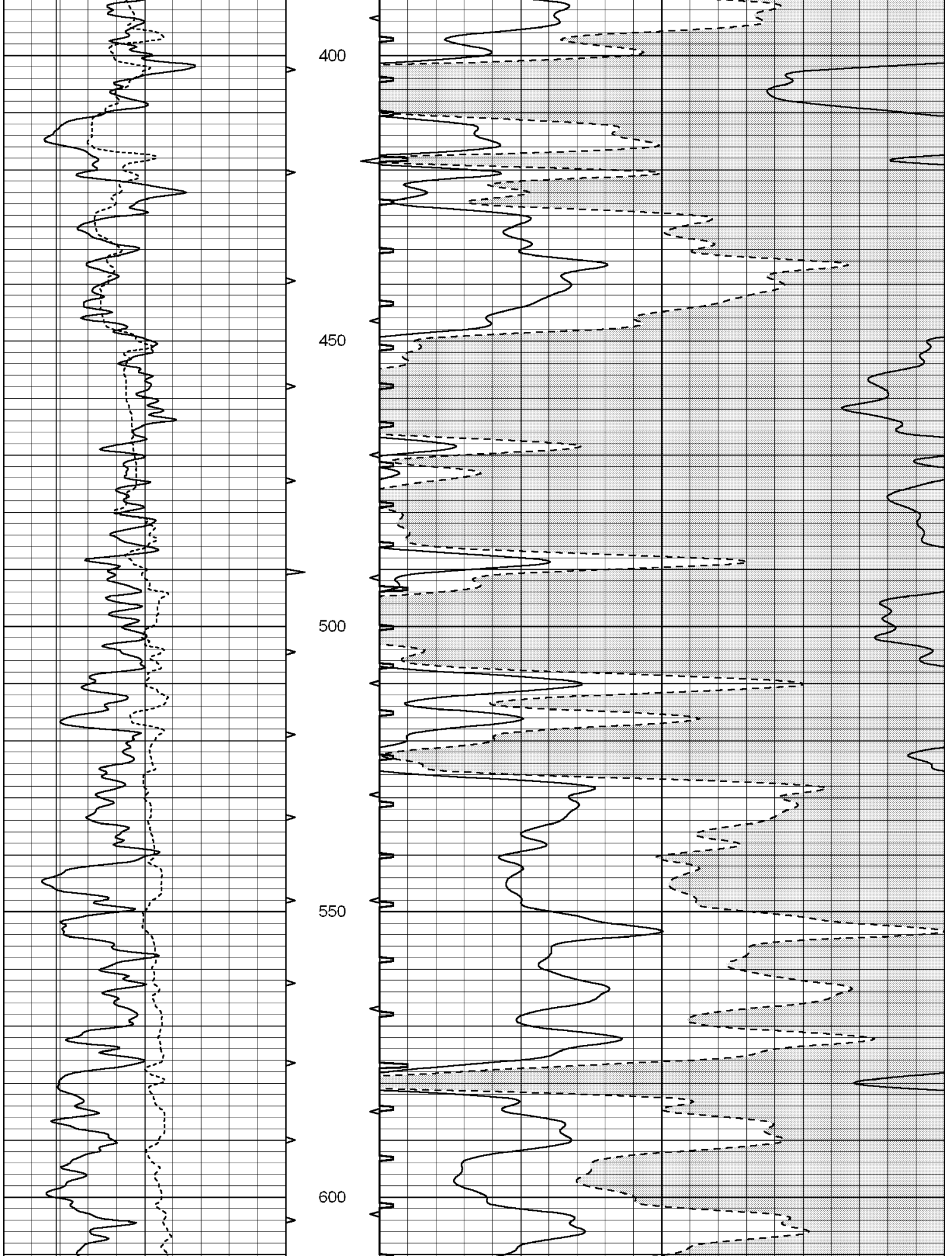
Comments

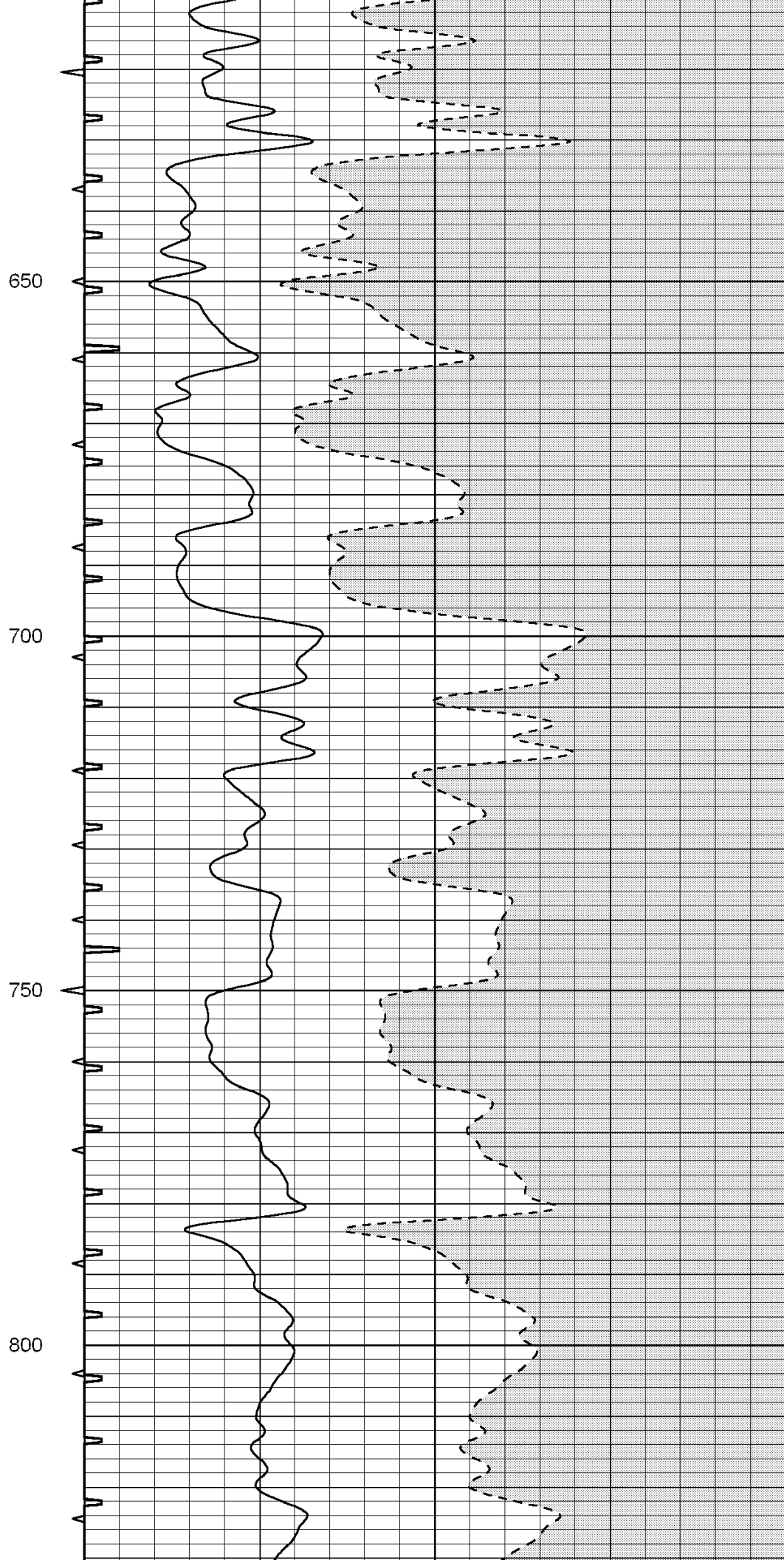
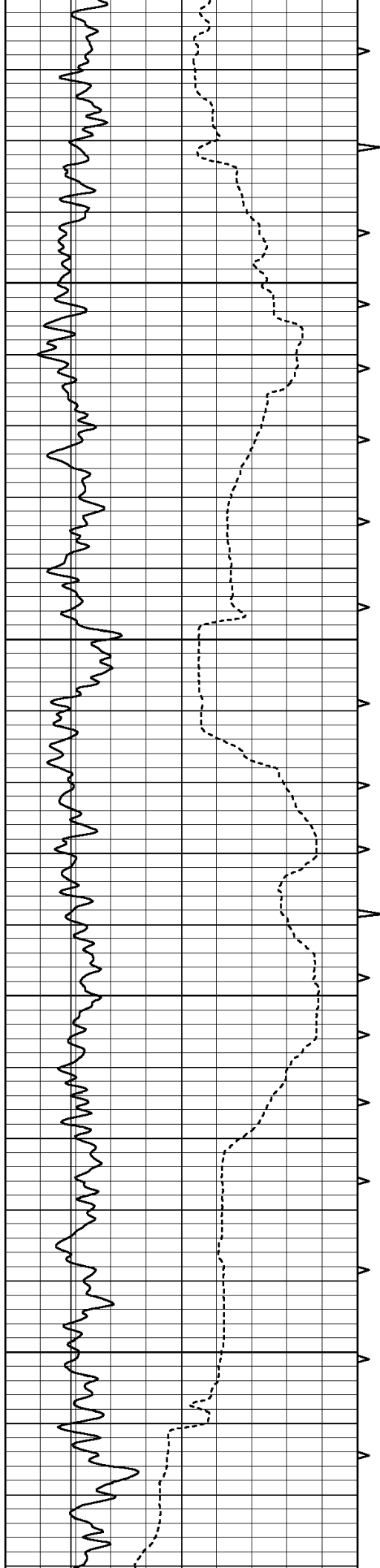
THANK YOU FOR USING SUPERIOR WELL SERVICES
HAYS, KS. 785-628-6395

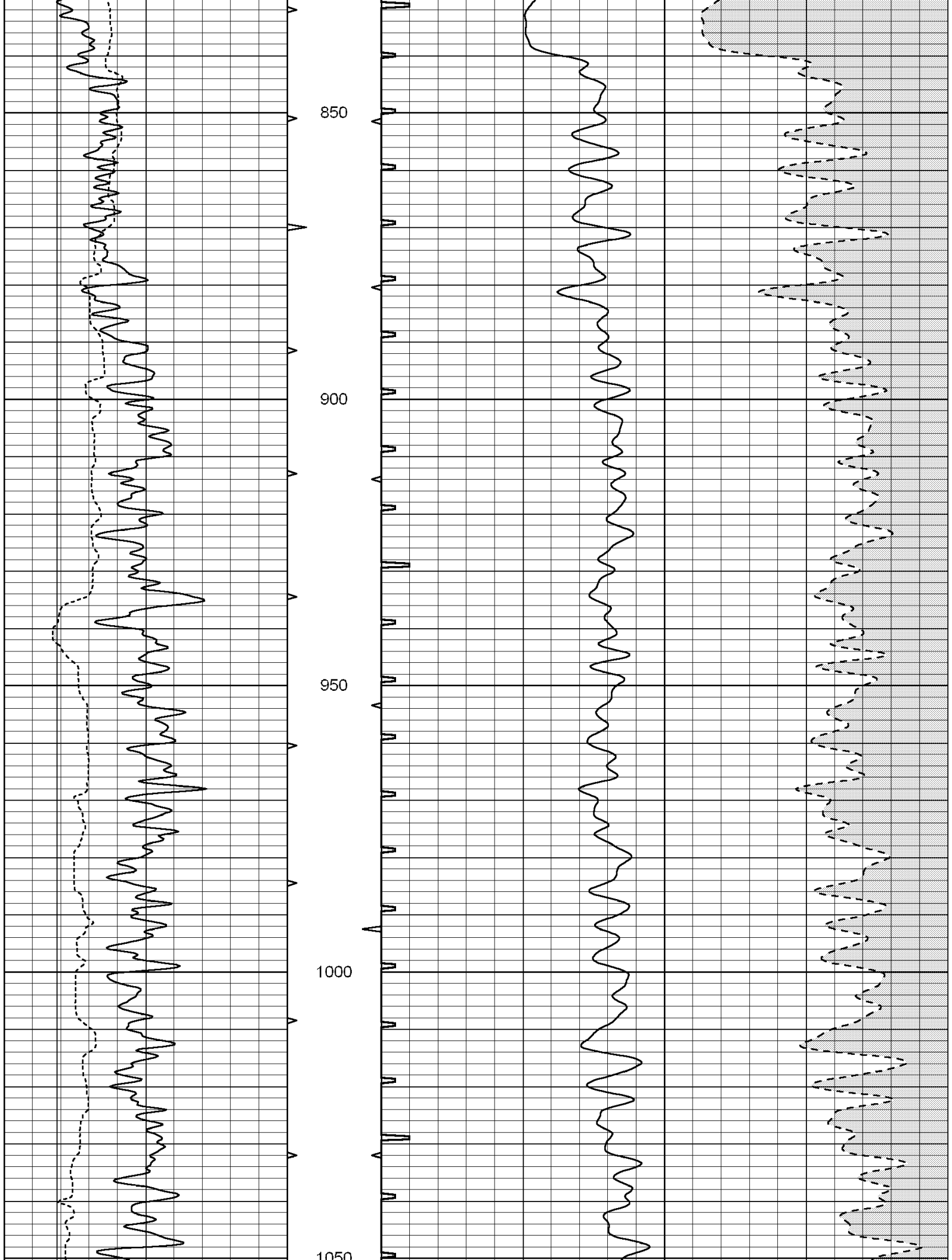
DIRECTIONS: HAYS, KS - SOUTH TO INTERSECTION HWY 183 & ANTONINO RD
1 MILE WEST - 1/2 MILE SOUTH TO TANK BATTERY - WEST INTO

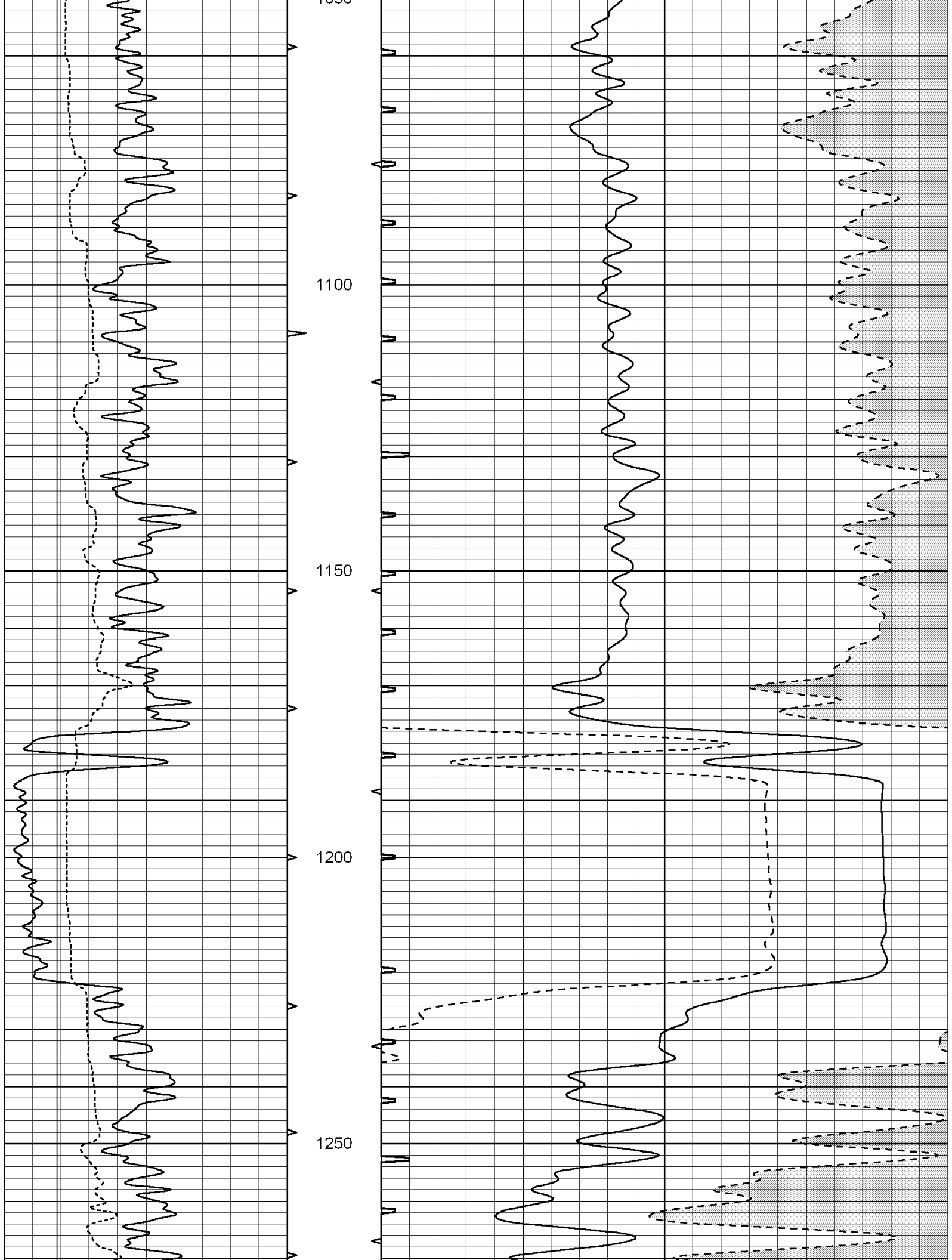
6	CALIPER (in)	16	ABHV	140	DELTA TIME (usec/ft)	40
0	GAMMA RAY (GAPI)	150	10 (ft3) 0	30	SONIC POROSITY (pu)	-10
			TBHV	0	ITT (msec)	20
			0 (ft3) 10			

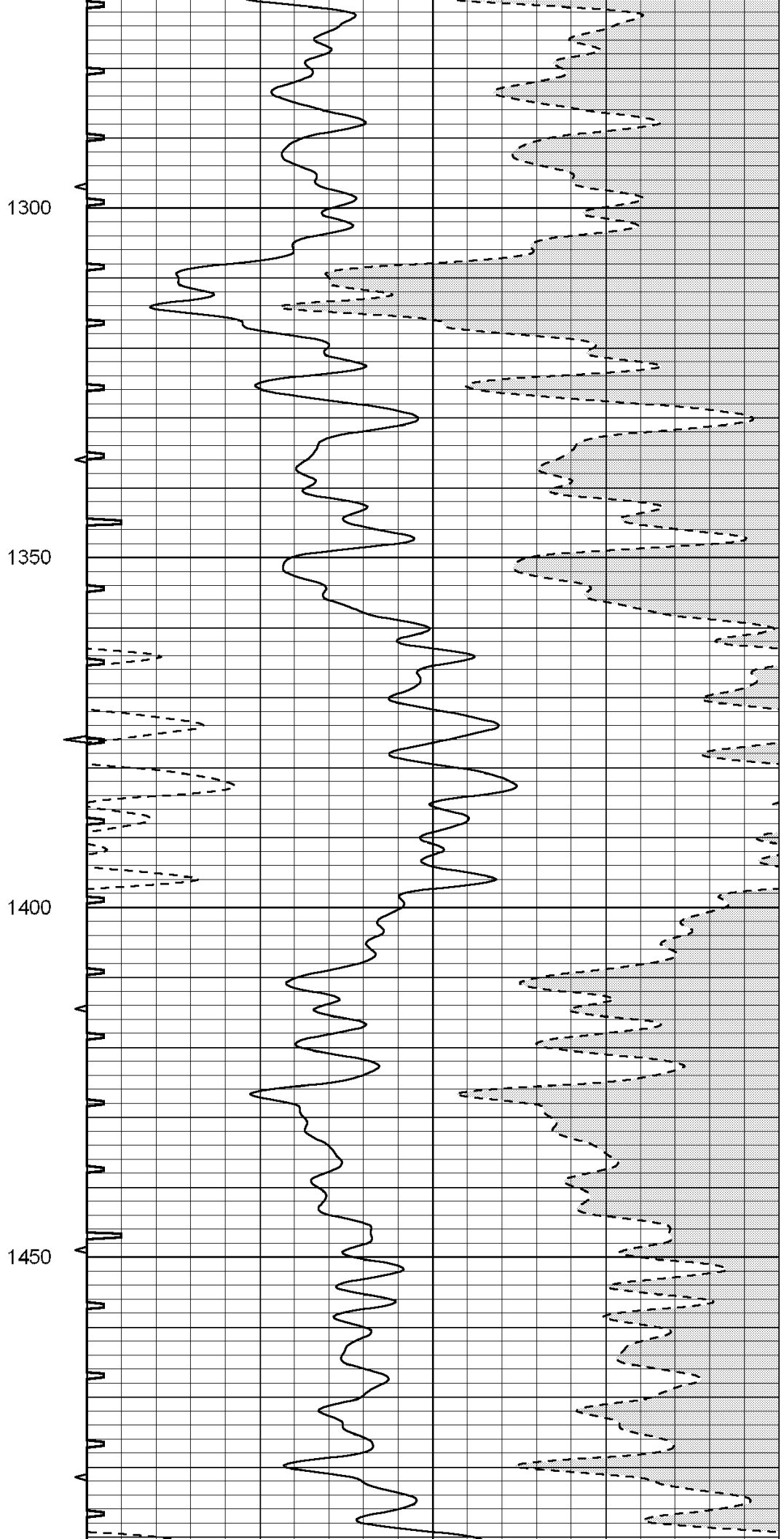
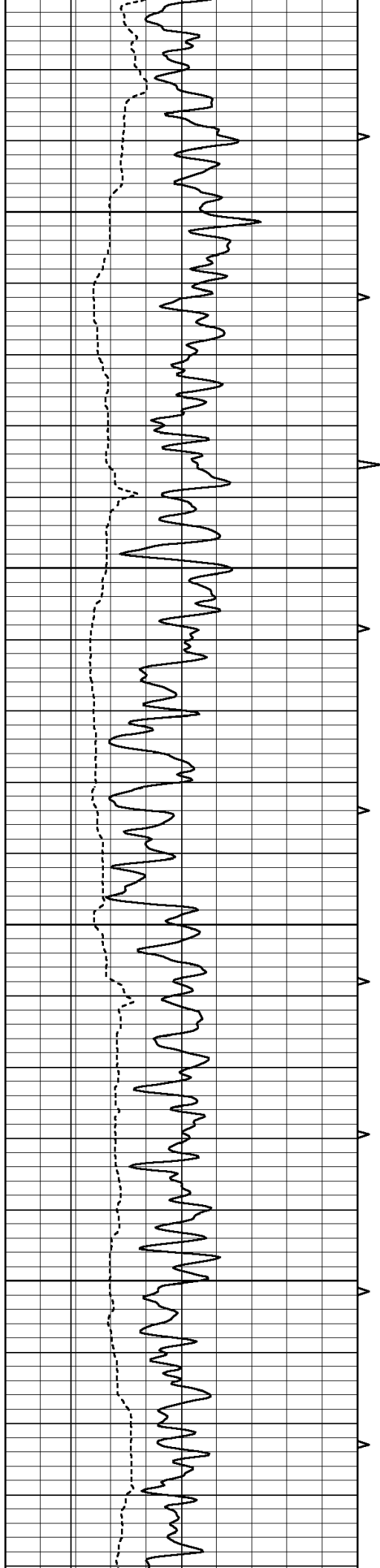


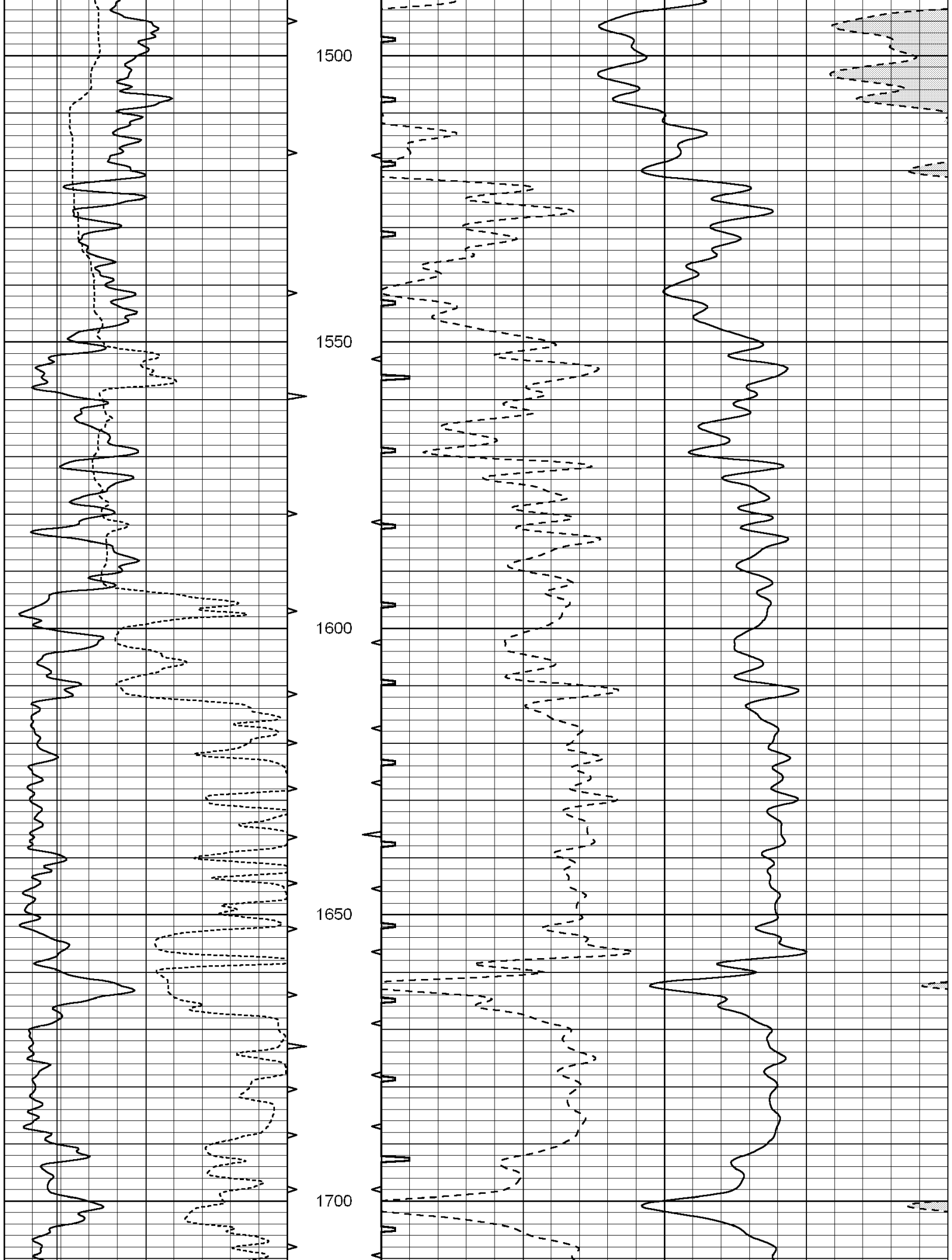


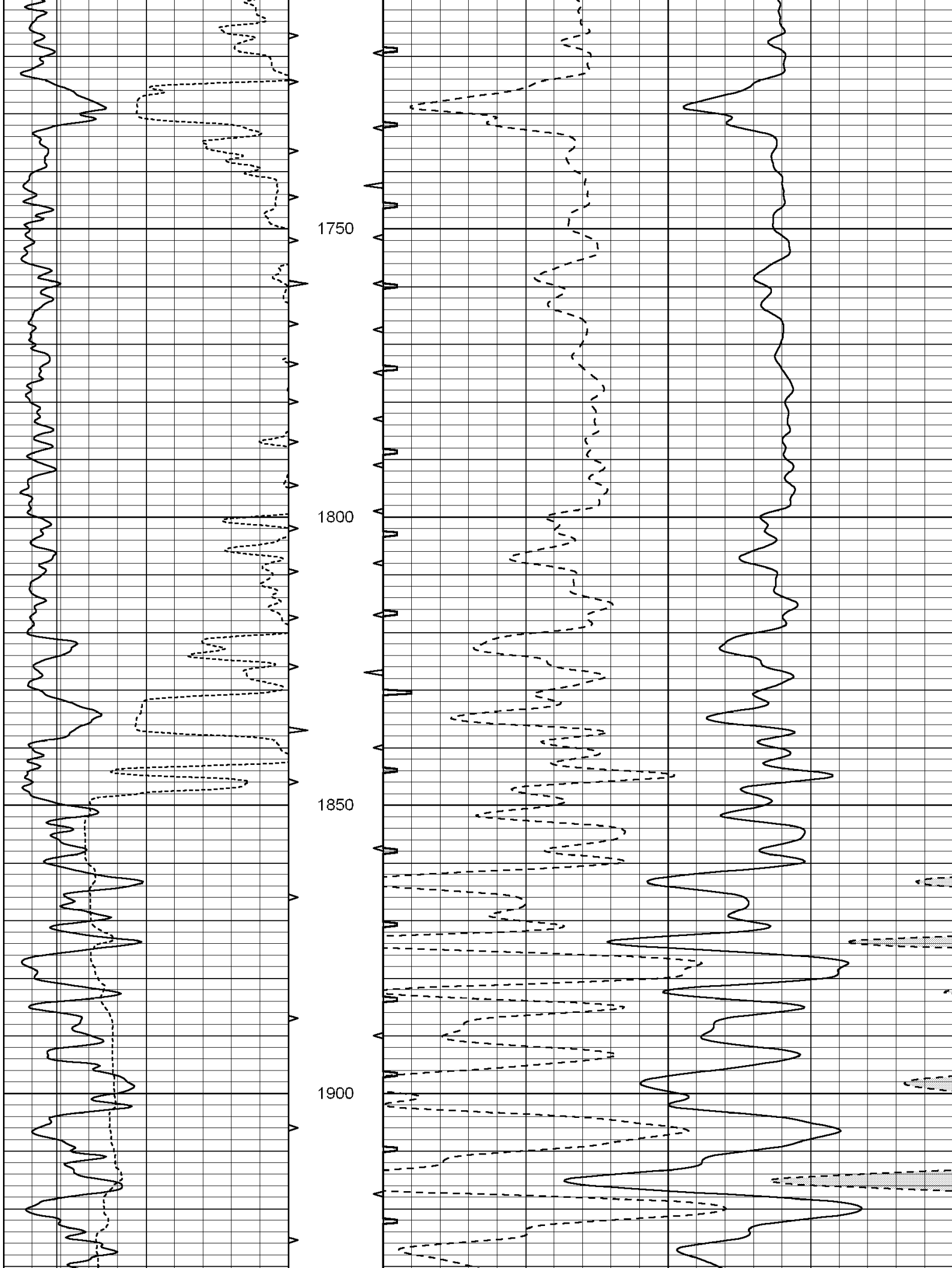


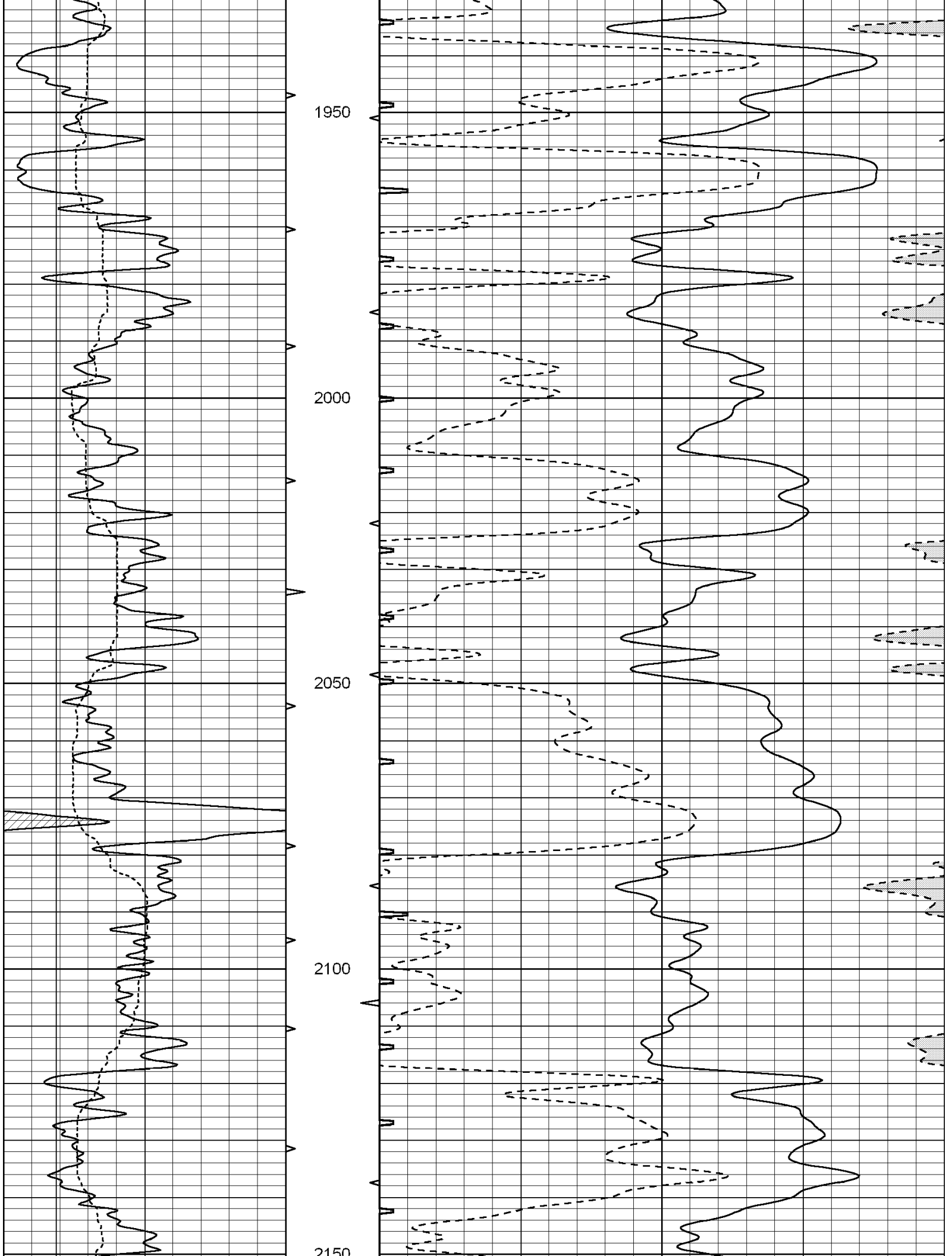


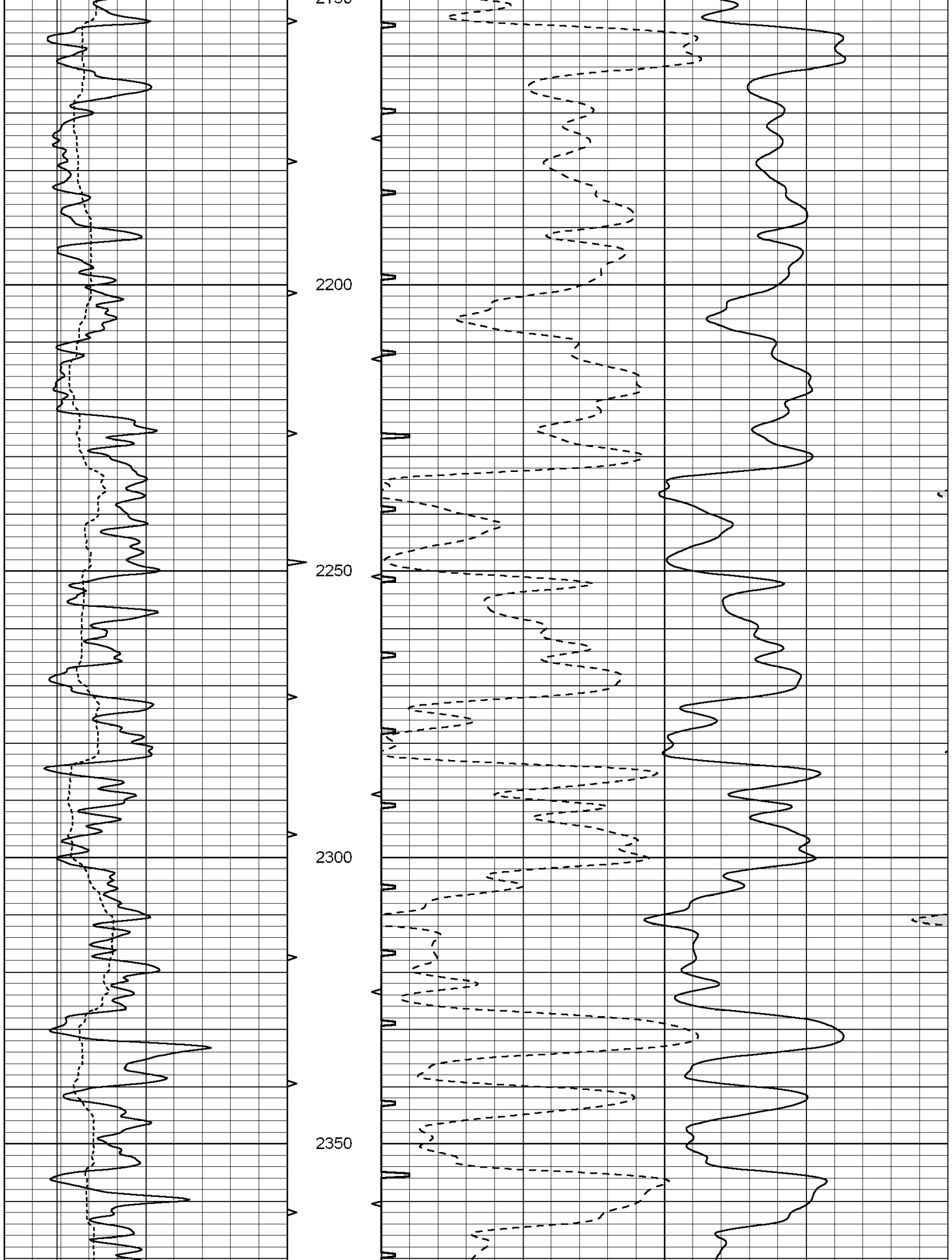


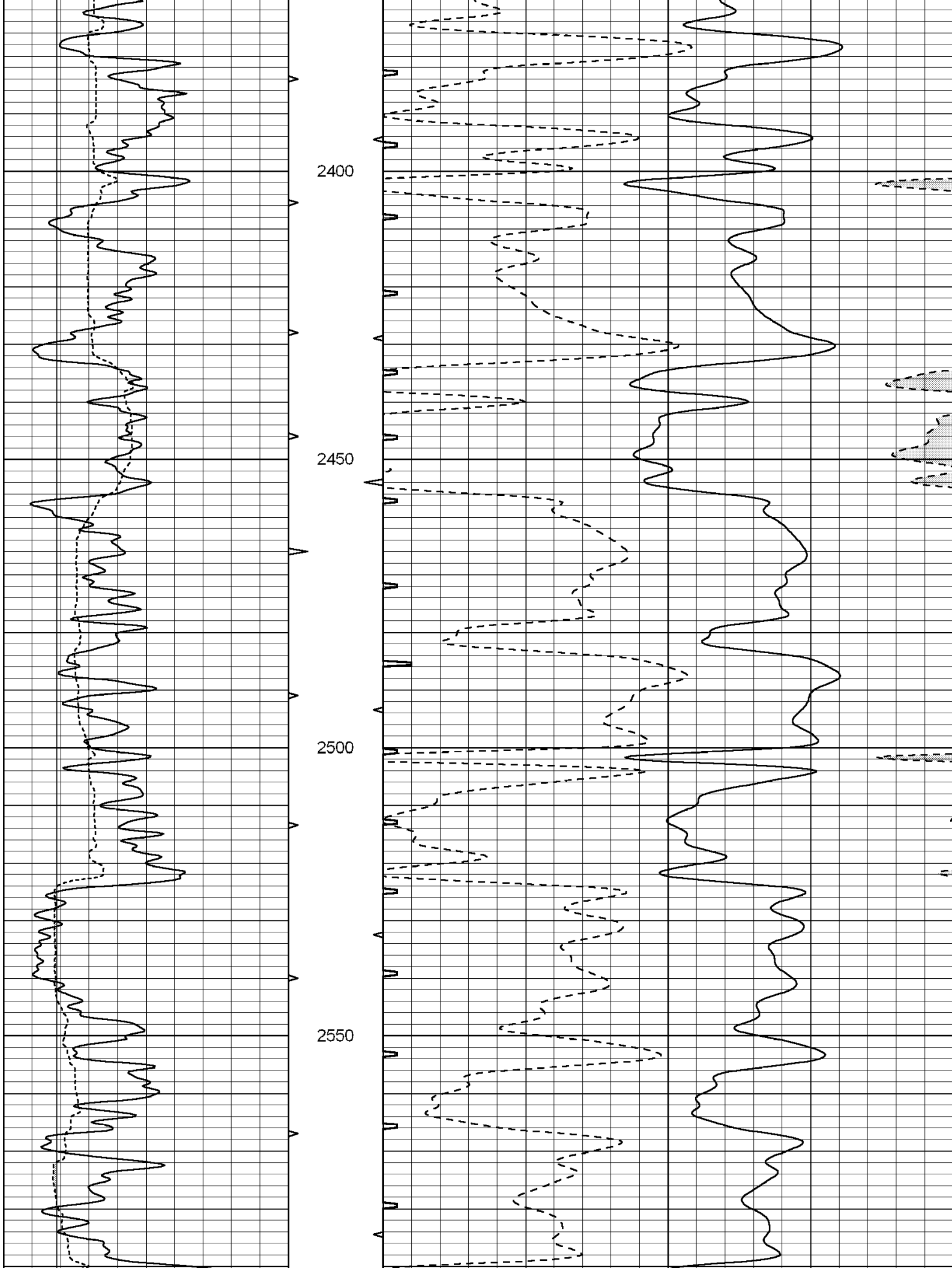


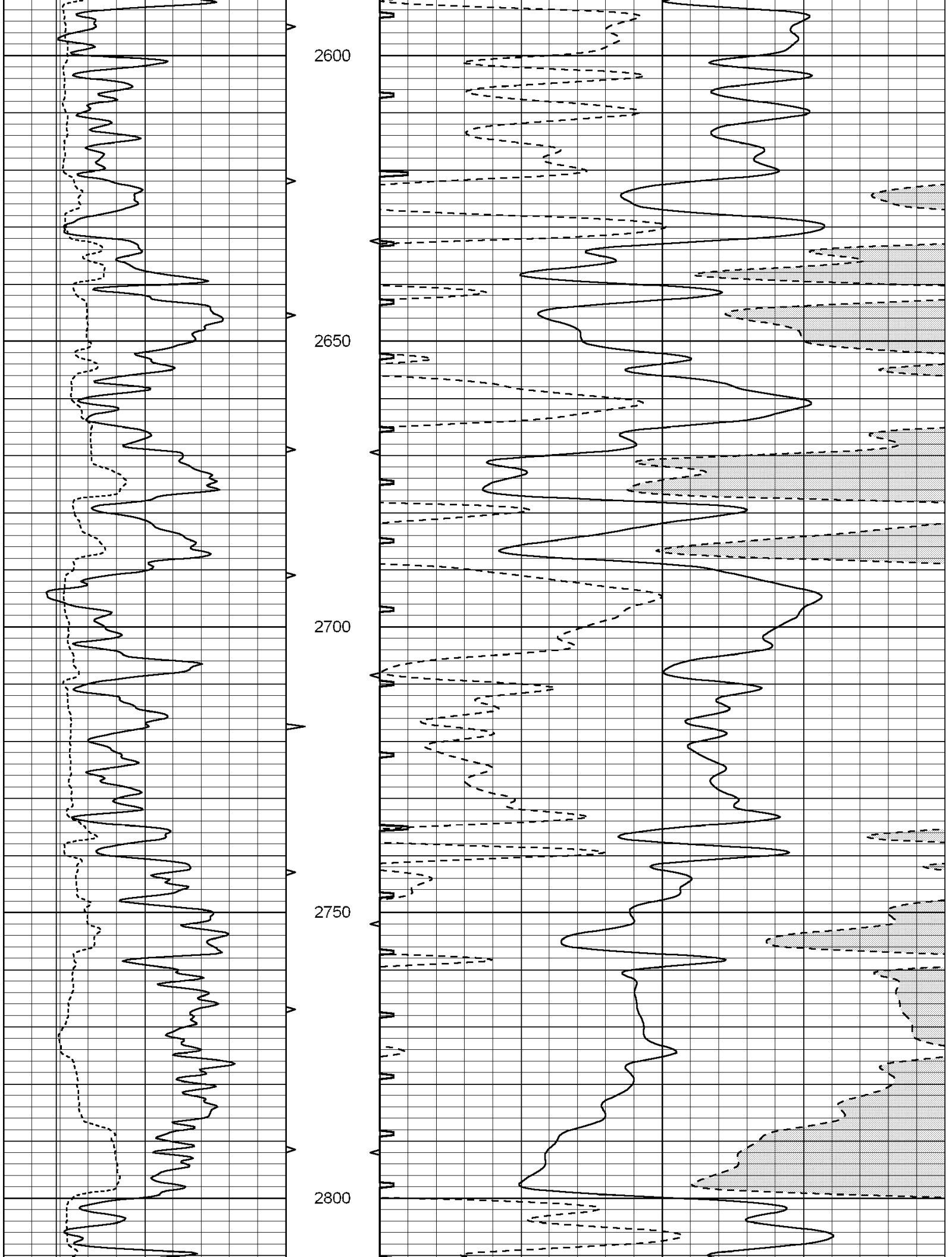


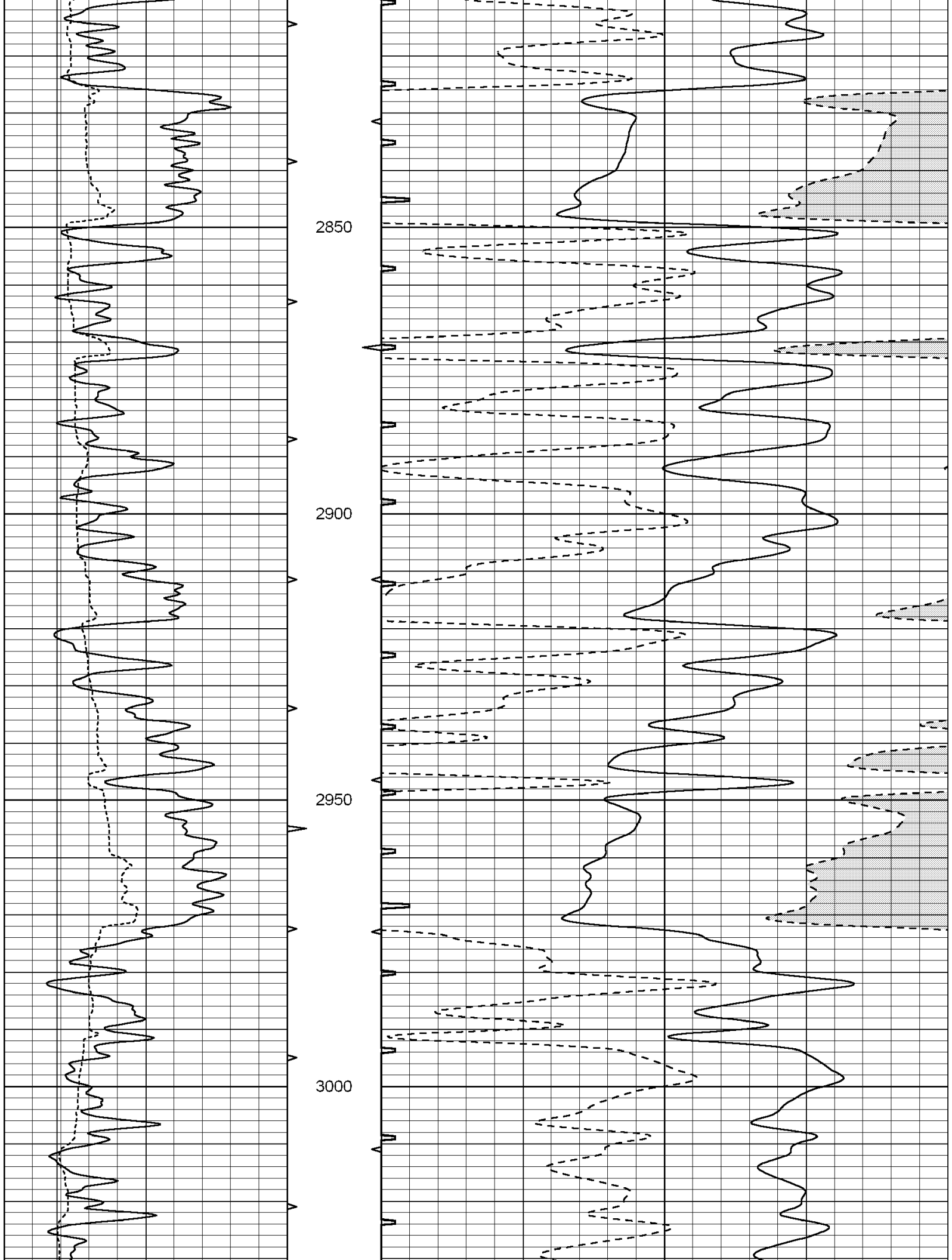


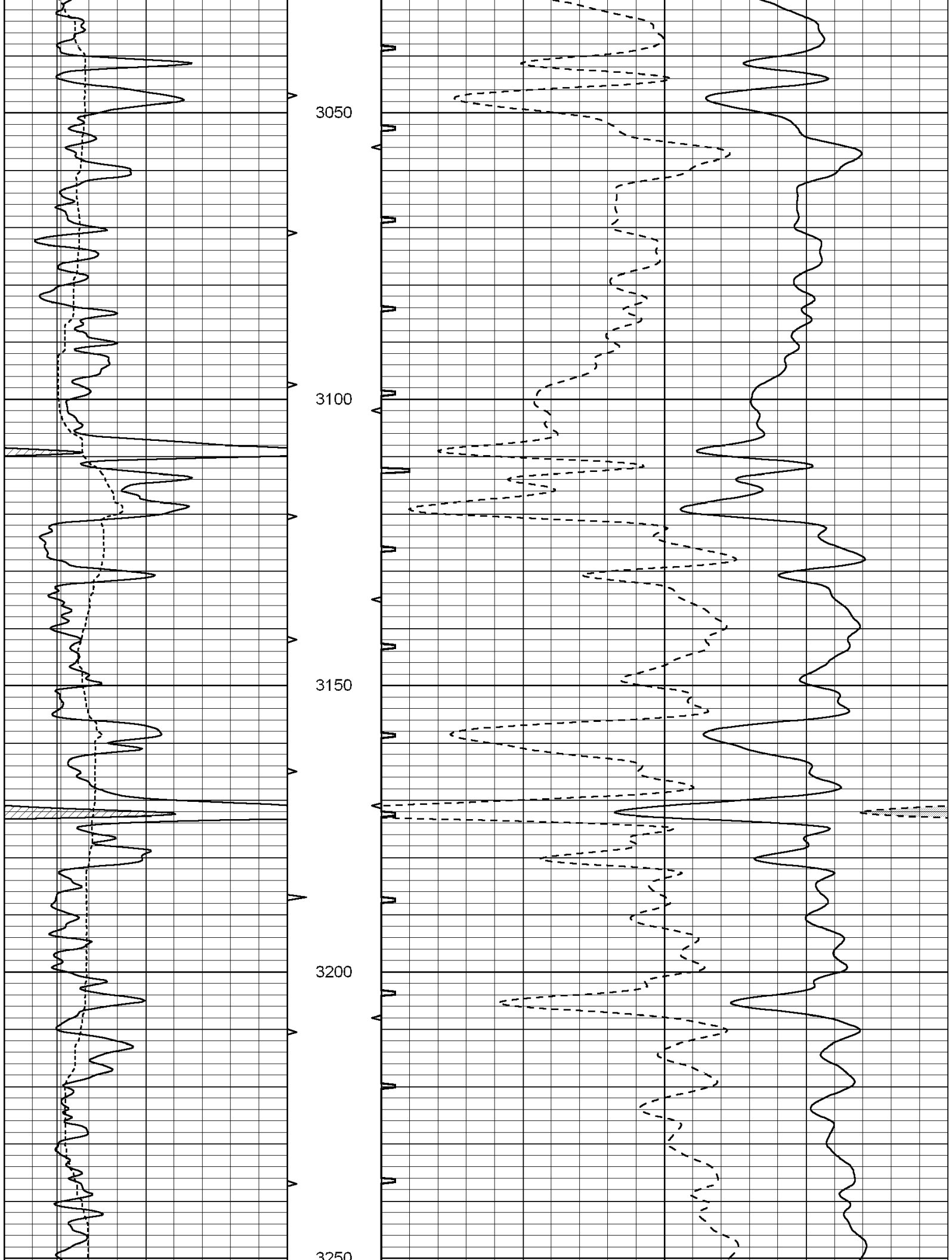


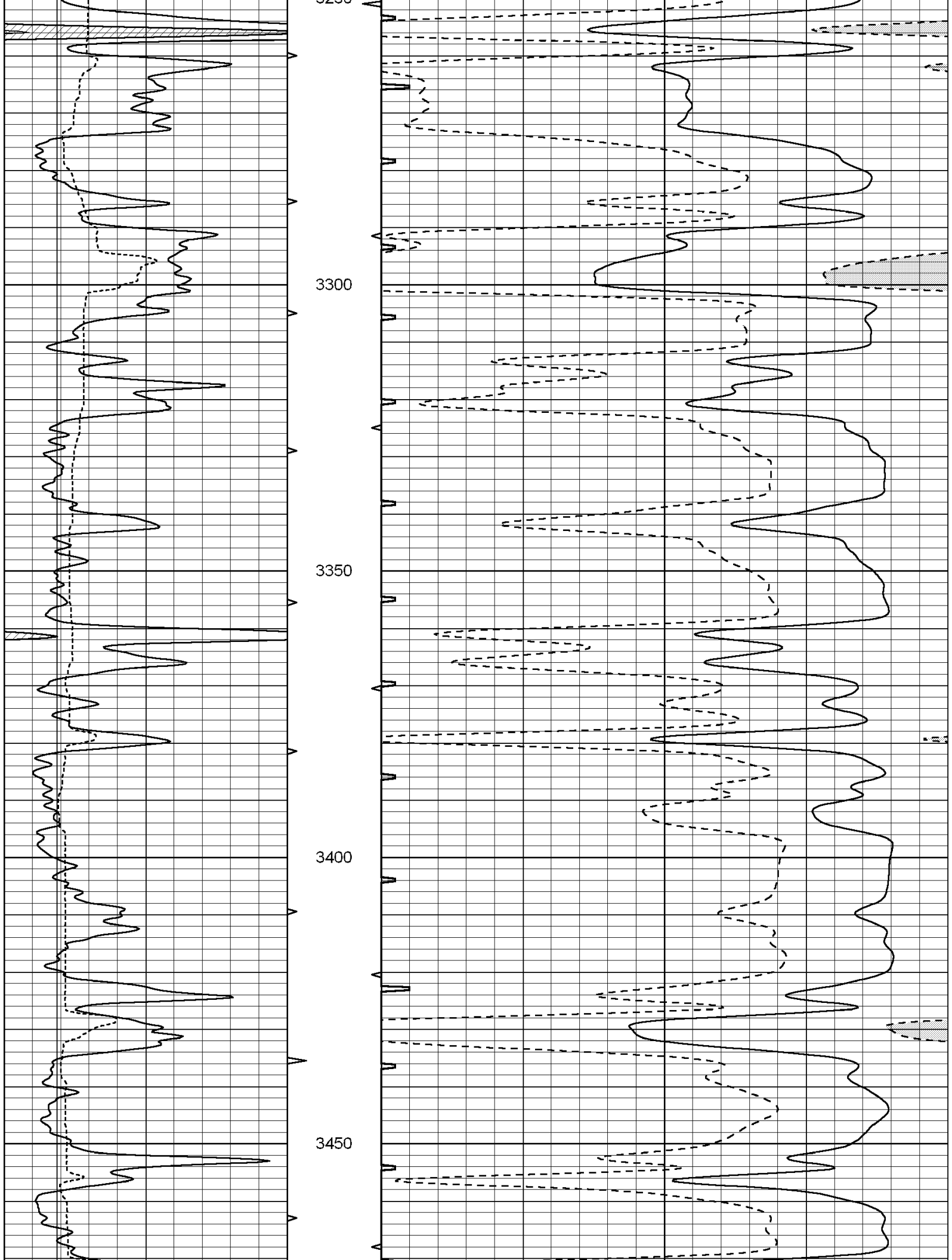


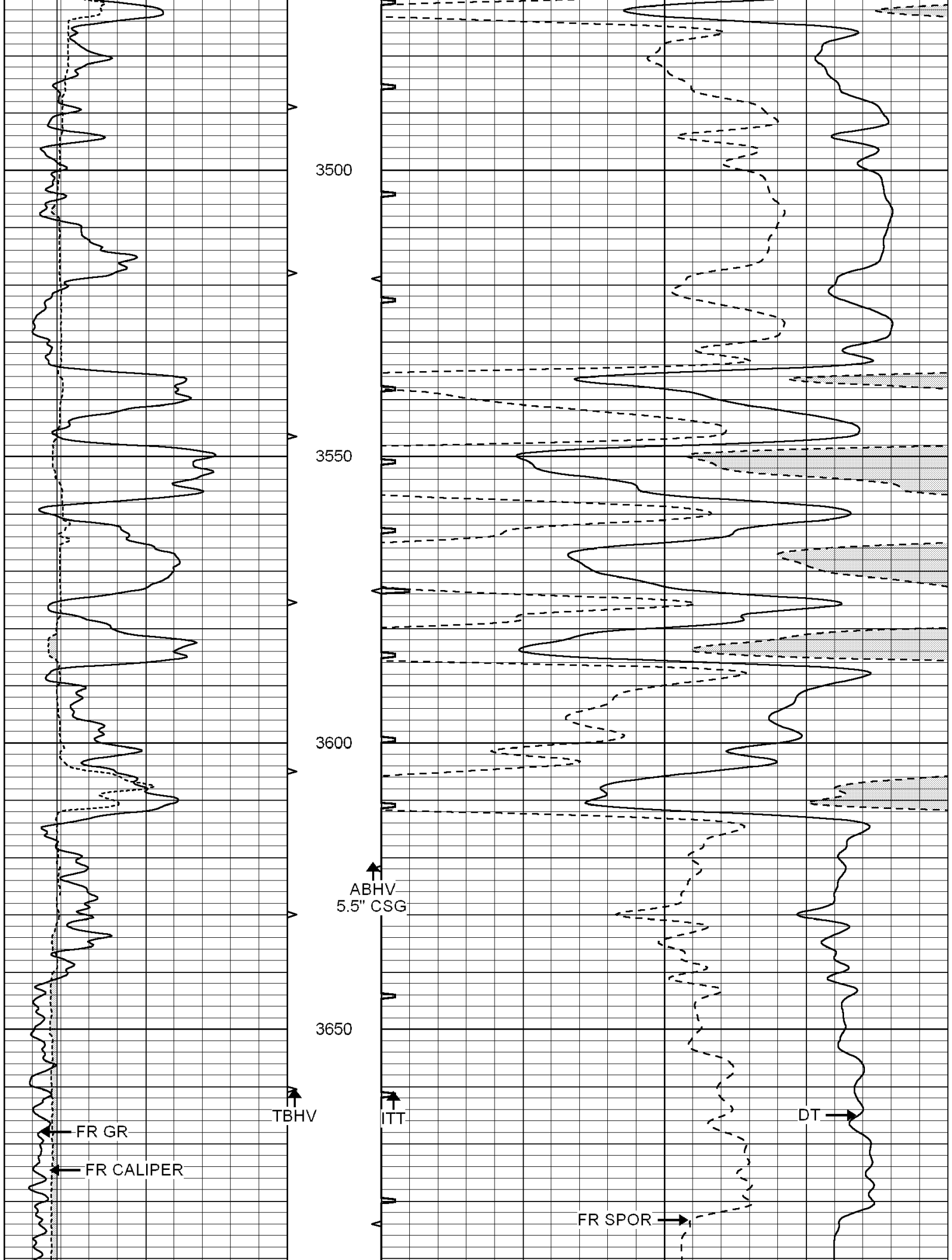












		LTD 3693				
6	CALIPER (in)	16	ABHV	140	DELTA TIME (usec/ft)	40
0	GAMMA RAY (GAPI)	150	10 (ft3)	0 30	SONIC POROSITY (pu)	-10
		TBHV		ITT (msec)		20
		0 (ft3) 10				

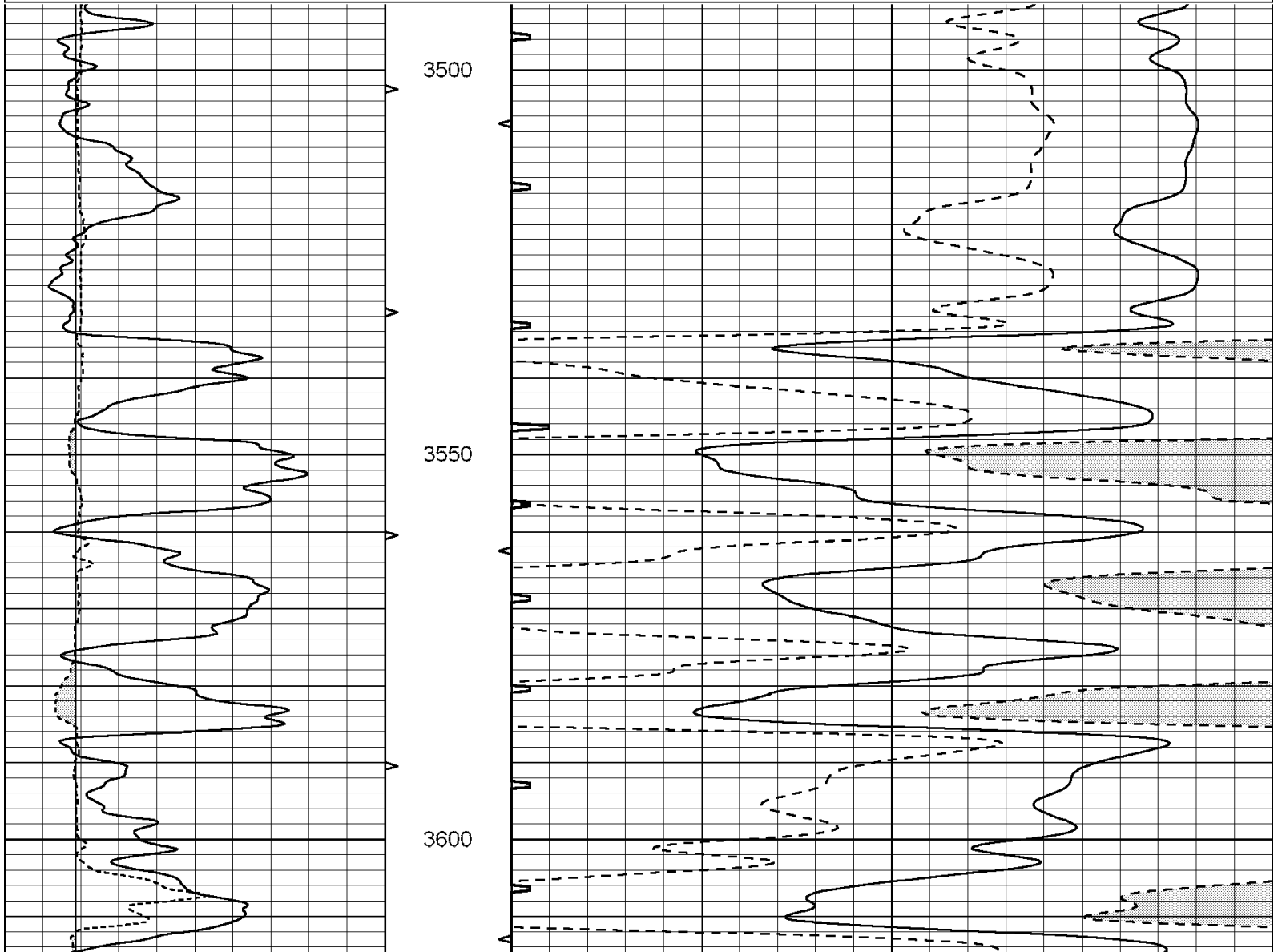


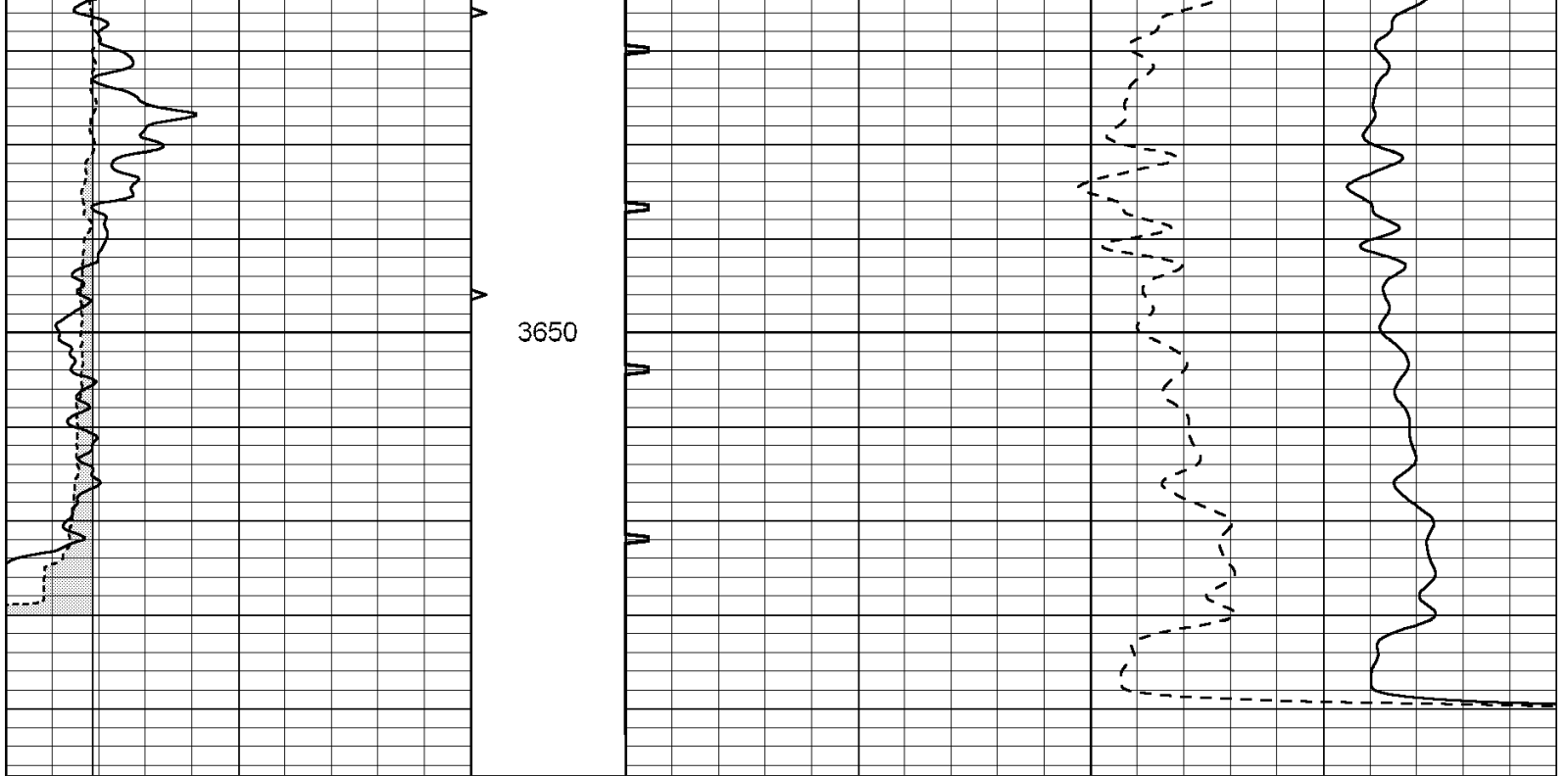
SUPERIOR
Hays,
Kansas

REPEAT SECTION

Database File: 004411 ddn.db
 Dataset Pathname: pass5.1
 Presentation Format: _slt
 Dataset Creation: Fri Oct 16 01:29:17 2009 by Calc Open-Cased 090629
 Charted by: Depth in Feet scaled 1:240

6	CALIPER (in)	16	ABHV	140	DELTA TIME (usec/ft)	40
0	GAMMA RAY (GAPI)	150	10 (ft3)	0 30	SONIC POROSITY (pu)	-10
		TBHV		ITT (msec)		20
		0 (ft3) 10				





6	CALIPER (in)	16	ABHV	140	DELTA TIME (usec/ft)	40
0	GAMMA RAY (GAPI)	150	10 (ft3) 0	30	SONIC POROSITY (pu)	-10
			TBHV	0	ITT (msec)	20
			0 (ft3) 10			