



Microresistivity Log

DIGITAL LOG (785) 625-3858

API No.	15-185-23,587-00-00		
Company	LaVeta Oil & Gas		
Well	Sara #1		
Field	Heyen		
County	Stafford	State	Kansas
Location	1790' FNL & 2130' FWL		
Sec: 14	Twp: 22S	Rge: 12W	
Permanent Datum	Ground Level	Elevation	1853
Log Measured From	Kelly Bushing	5 Ft. Above Perm. Datum	
Drilling Measured From	Kelly Bushing		
		Other Services	CNL / CDL DIL
		Elevation	K.B. 1858 D.F. 1853 G.L. 1853

Date	9/6/2009
Run Number	Two
Depth Driller	3755
Depth Logger	3754
Bottom Logged Interval	3753
Top Log Interval	3600
Casing Driller	8.625 @ 224
Casing Logger	215
Bit Size	7.875
Type Fluid in Hole	Chemical
Salinity, ppm CL	5.900
Density / Viscosity	9.2 46
pH / Fluid Loss	10.5 9.2
Source of Sample	Flowline
Rm @ Meas. Temp	.4 @ 72
Rmf @ Meas. Temp	.3 @ 72
Rmc @ Meas. Temp	.54 @ 72
Source of Rmf / Rmc	Charts
Rm @ BHT	.25 @ 113
Operating Rig Time	3 1/2 Hours
Max Rec. Temp. F	113
Equipment Number	17
Location	Hays
Recorded By	T. Martin
Witnessed By	Bruce Reed

<<< Fold Here >>>

All interpretations are opinions based on inferences from electrical or other measurements and we cannot and do not guarantee the accuracy or correctness of any interpretation, and we shall not, except in the case of gross or willful negligence on our part, be liable or responsible for any loss, costs, damages, or expenses incurred or sustained by anyone resulting from any interpretation made by any of our officers, agents or employees. These interpretations are also subject to our general terms and conditions set out in our current Price Schedule.

Comments

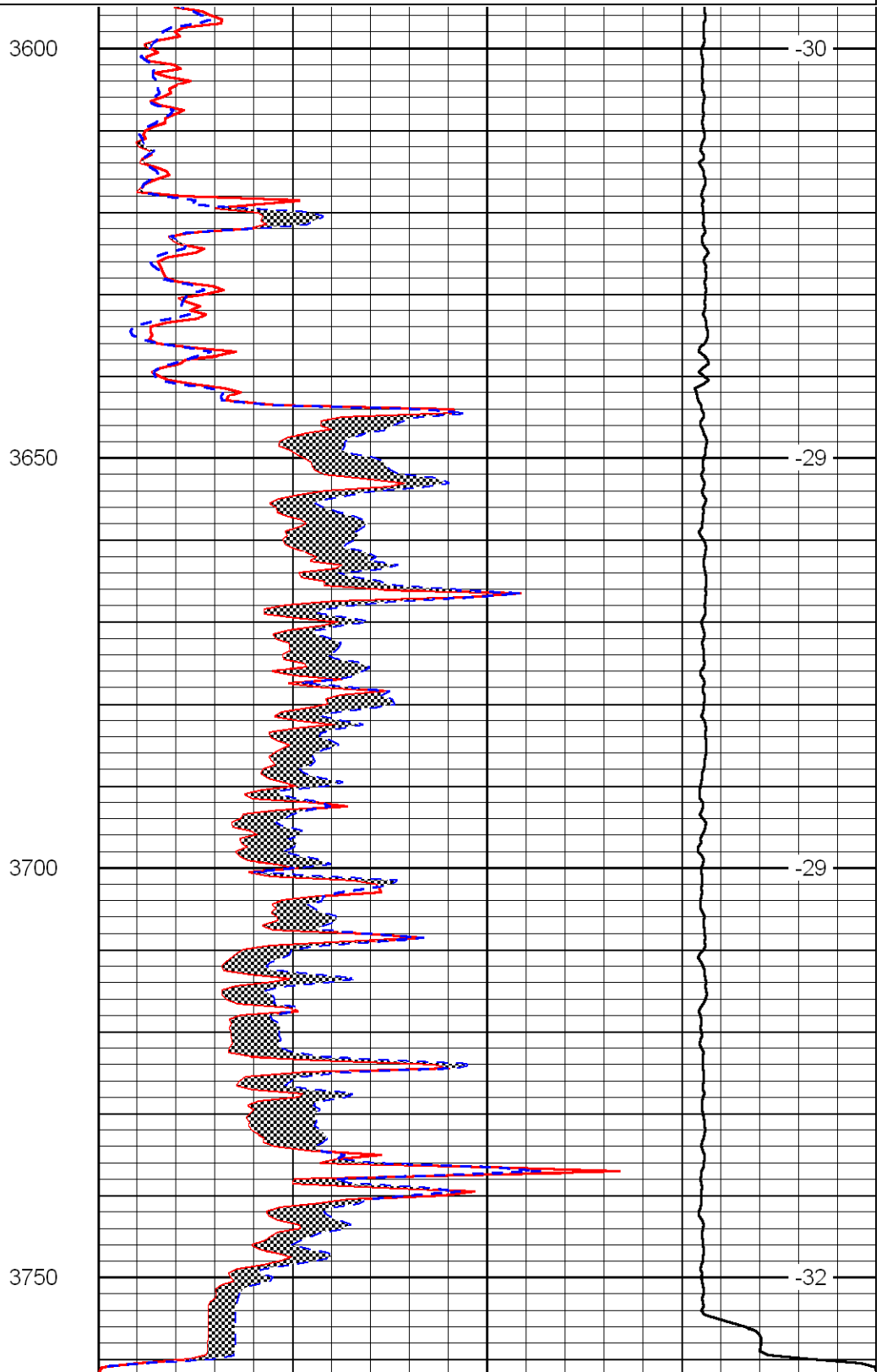
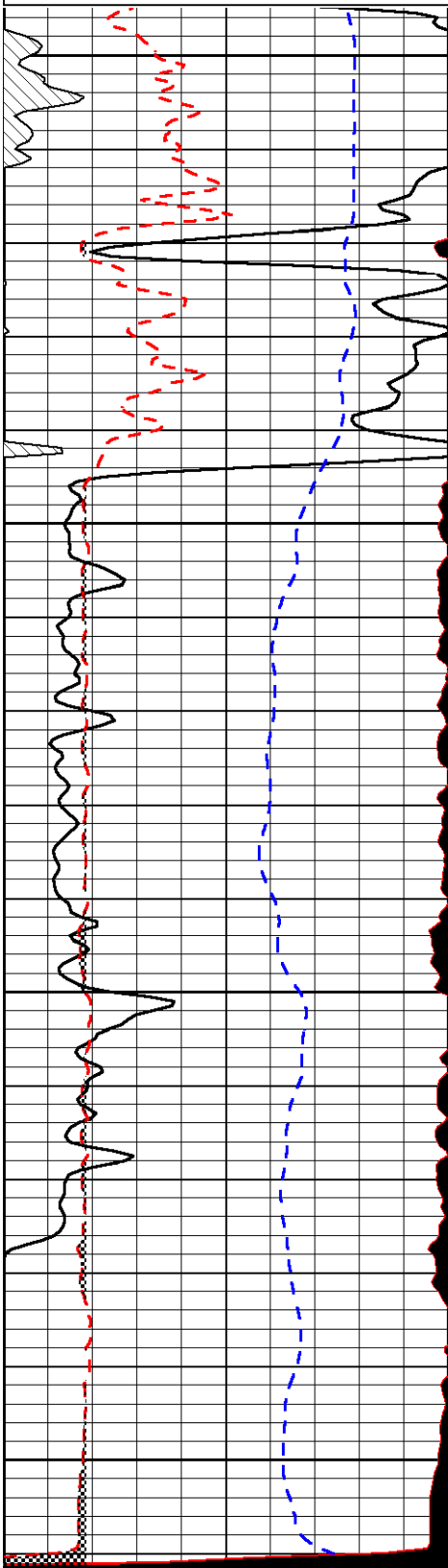
Thank you for using Log-Tech, Inc.
(785) 625-3858

Ike & Joe's, 1 3/8 S, W 1/2 into

Database File: c:\warrior\data\laveta_sara_#1\vtahd.db
 Dataset Pathname: dil\vtastk
 Presentation Format: micro
 Dataset Creation: Sun Sep 06 21:13:04 2009
 Charted by: Depth in Feet scaled 1:240

0	Gamma Ray	150
6	Micro Log Caliper (GAPI)	16
2.875	mcal (GAPI)	7.875
-200	SP	0

0	Micro Inverse 1 X 1	40
0	Micro Normal 2"	40
10000	Line Weight	0
		LSPD



0	Gamma Ray	150
6	Micro Log Caliper (GAPI)	16
2.875	mcal (GAPI)	7.875
-200	SP	0

0	Micro Inverse 1 X 1	40
0	Micro Normal 2"	40
10000	Line Weight	0
		LSPD