



**SUPERIOR  
Hays,  
Kansas**

**SONIC  
LOG**

Company: DIXON ENERGY, INC.  
Well: ROLF LAND #3  
Field: BARKIN  
County: KINGMAN  
State: KANSAS

Company: DIXON ENERGY, INC.  
Well: ROLF LAND #3  
Field: BARKIN  
County: KINGMAN  
State: KANSAS

Location: 1250' FSL & 1330' FWL  
API #: 15-095-22192-0000  
SEC 18 TWP 30S RGE 10W  
Permanent Datum: GROUND LEVEL  
Log Measured From: KELLY BUSHING 11' A.G.L.  
Drilling Measured From: KELLY BUSHING  
Elevation: 1792  
Other Services: CDL/CNL DIL/MEL  
K.B. 1803  
D.F. 1801  
G.L. 1792

Date	7/31/09
Run Number	TWO
Depth Driller	4875
Depth Logger	4877
Bottom Logged Interval	4870
Top Log Interval	300
Casing Driller	8 5/8" @ 309'
Casing Logger	307'
Bit Size	7 7/8
Type Fluid In Hole	CHEMICAL MUD
Density / Viscosity	9.1 / 50
pH / Fluid Loss	10.5 / 10.4
Source of Sample	FLOWLINE
Rm @ Meas. Temp	0.90 @ 98F
Rmf @ Meas. Temp	0.68 @ 98F
Rmc @ Meas. Temp	1.18 @ 98F
Source of Rmf / Rmc	CAL/CAL
Rm @ BHT	0.71 @ 124F
Time Circulation Stopped	2 HOURS
Time Logger on Bottom	
Maximum Recorded Temperature	124F
Equipment Number	680
Location	HAYS, KS
Recorded By	JEFF GRONEWEG
Witnessed By	RYAN DIXON

<<< Fold Here >>>

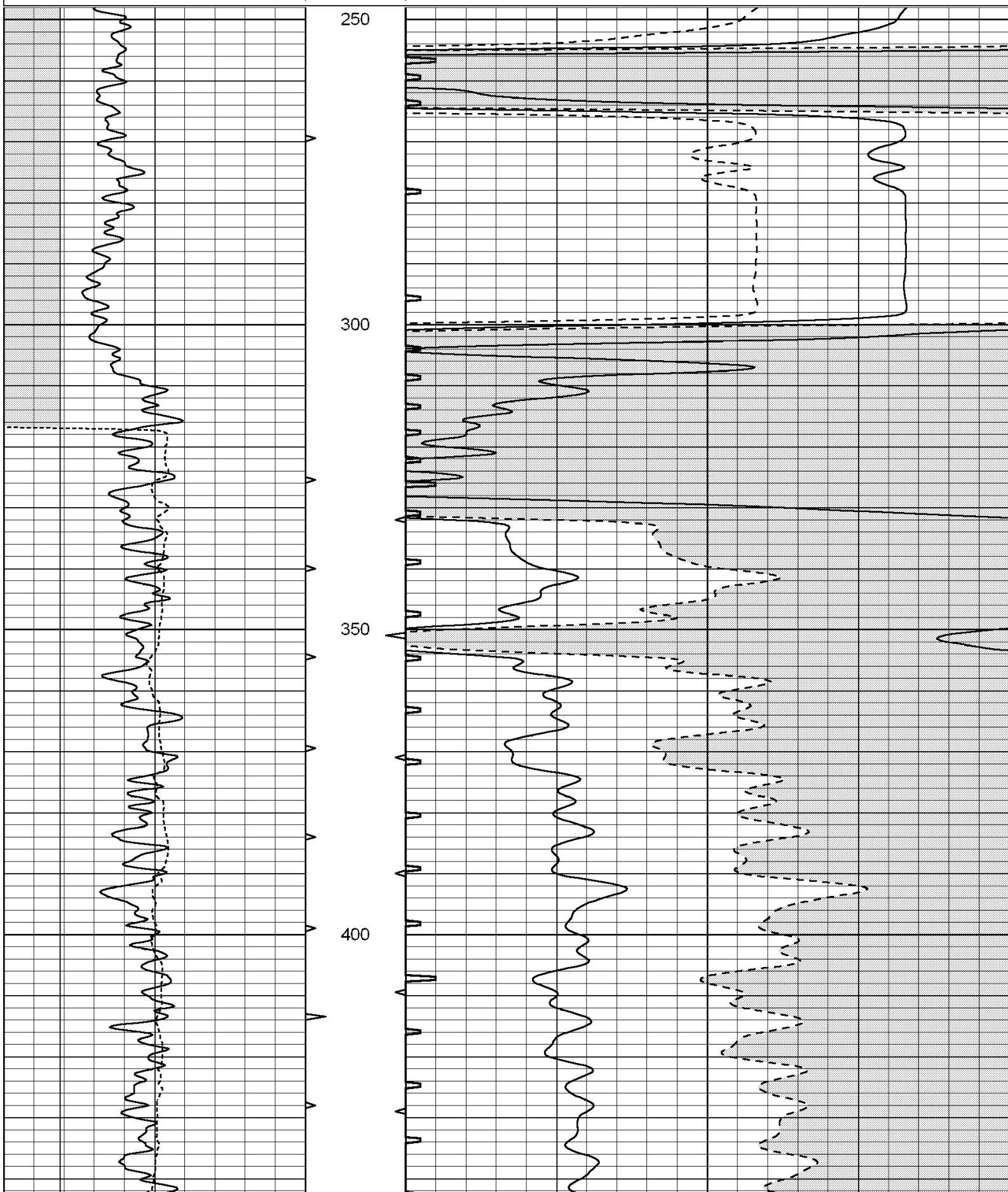
All interpretations are opinions based on inferences from electrical or other measurements and we cannot and do not guarantee the accuracy or correctness of any interpretation, and we shall not, except in the case of gross or willful negligence on our part, be liable or responsible for any loss, costs, damages, or expenses incurred or sustained by anyone resulting from any interpretation made by any of our officers, agents or employees. These interpretations are also subject to our general terms and conditions set out in our current Price Schedule.

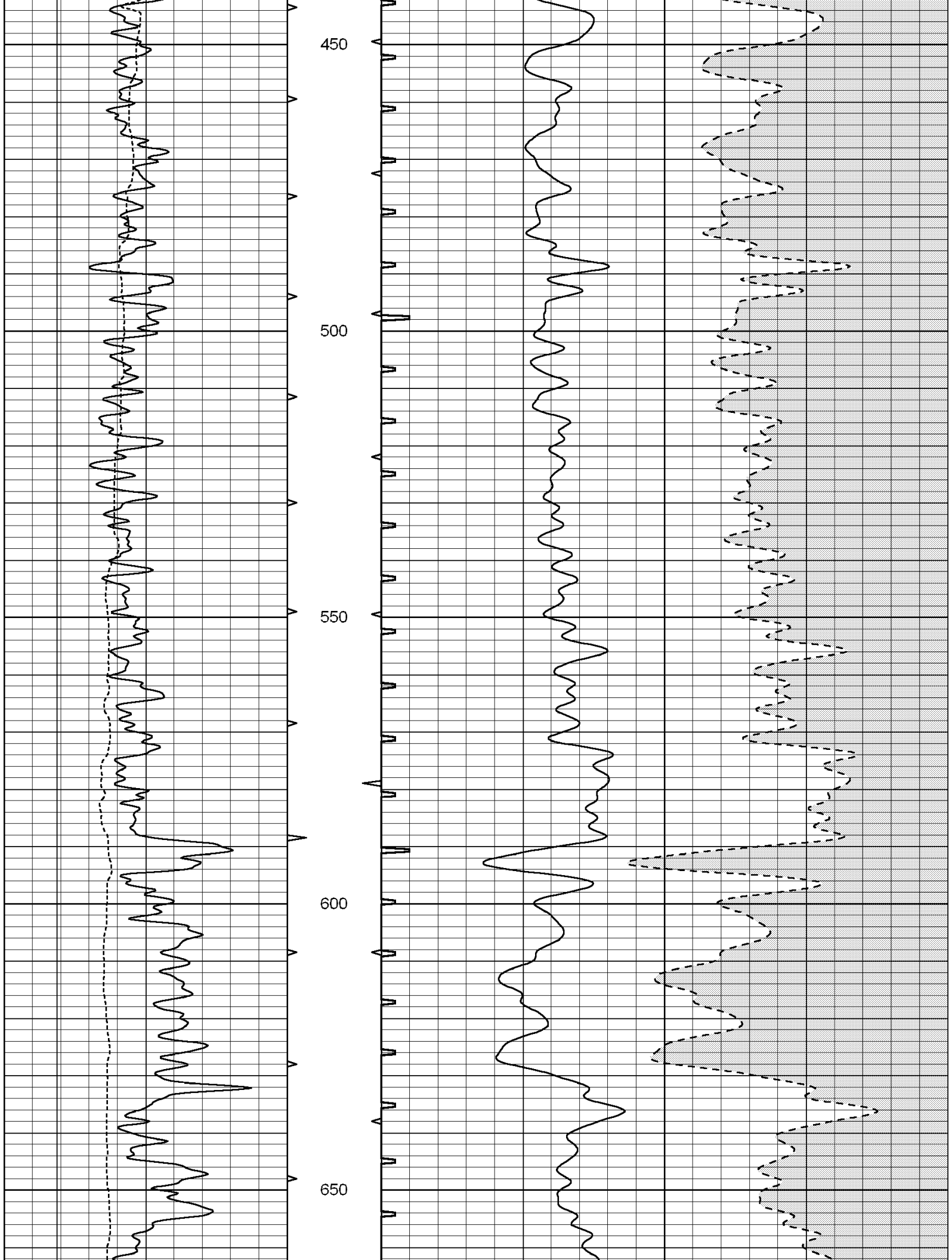
**Comments**

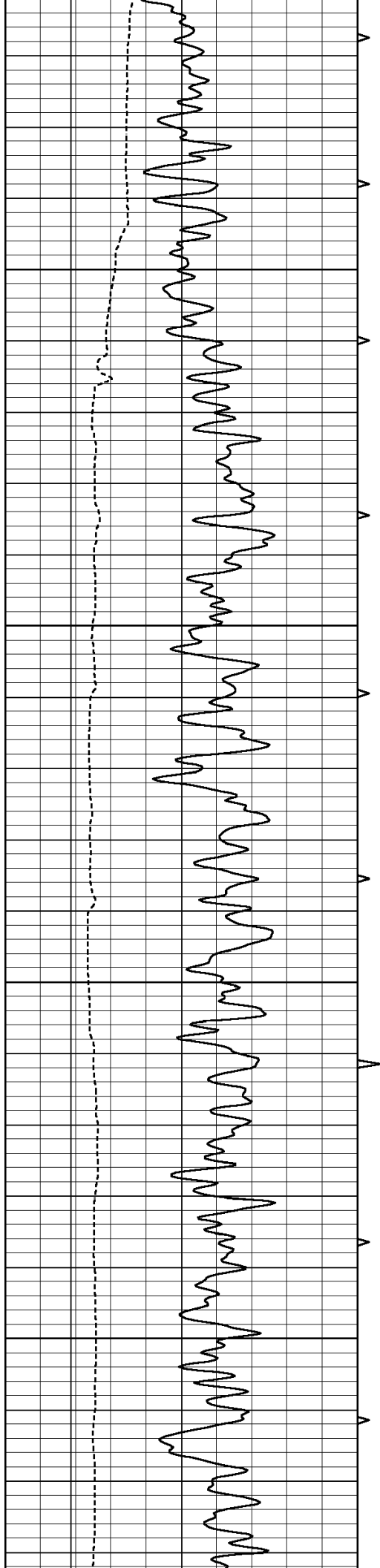
THANK YOU FOR USING SUPERIOR WELL SERVICES  
HAYS, KS. 785-628-6395

DIRECTIONS: NASHVILLE, KS - SOUTH 1 MILE TO CEMETARY  
WEST 1 1/2 MILES - NORTH INTO

0	GAMMA RAY (GAPI)	150	ABHV	140	DELTA TIME (usec/ft)	40
6	CALIPER (in)	16	10 (ft3) 0	30	SONIC POROSITY (pu)	-10
			TBHV	0	ITT (msec)	20
			0 (ft3) 10			





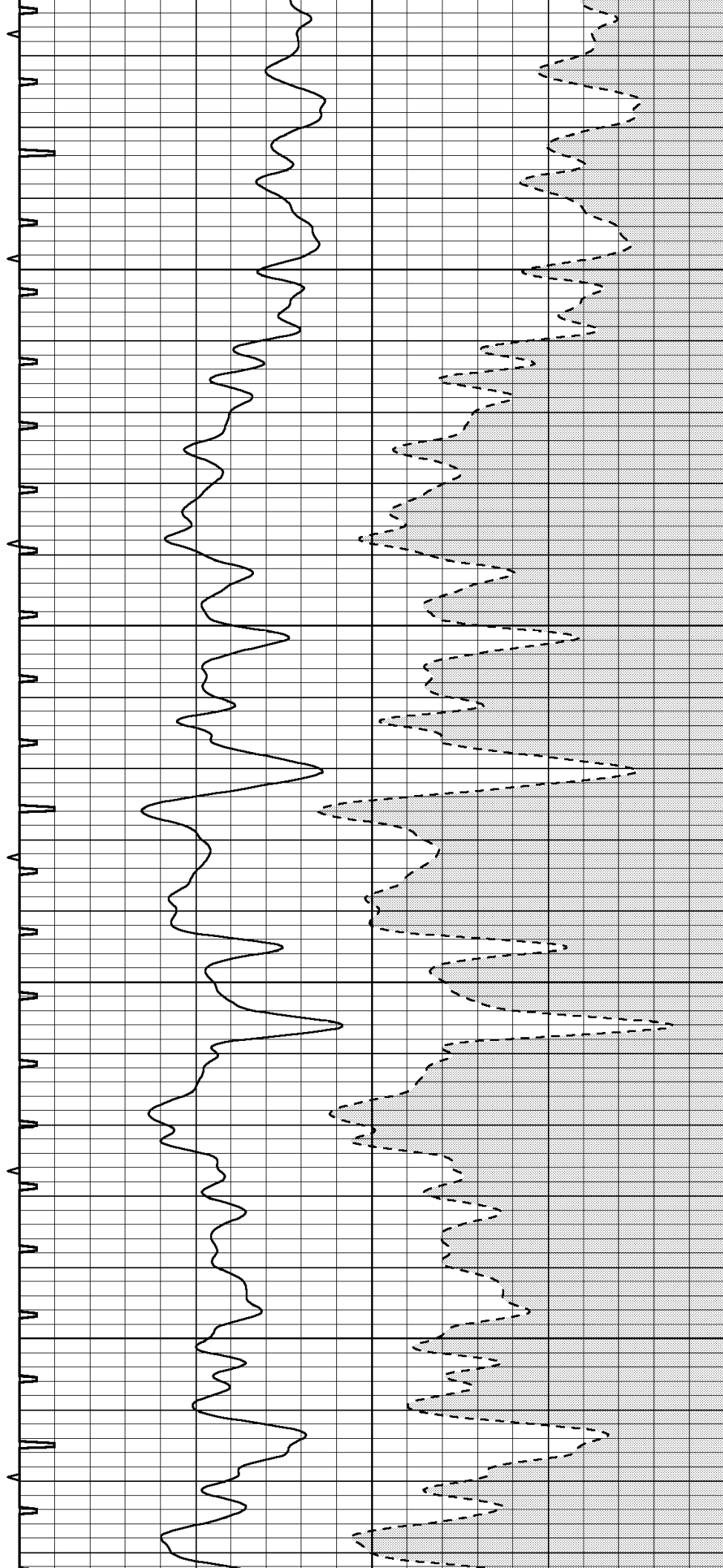


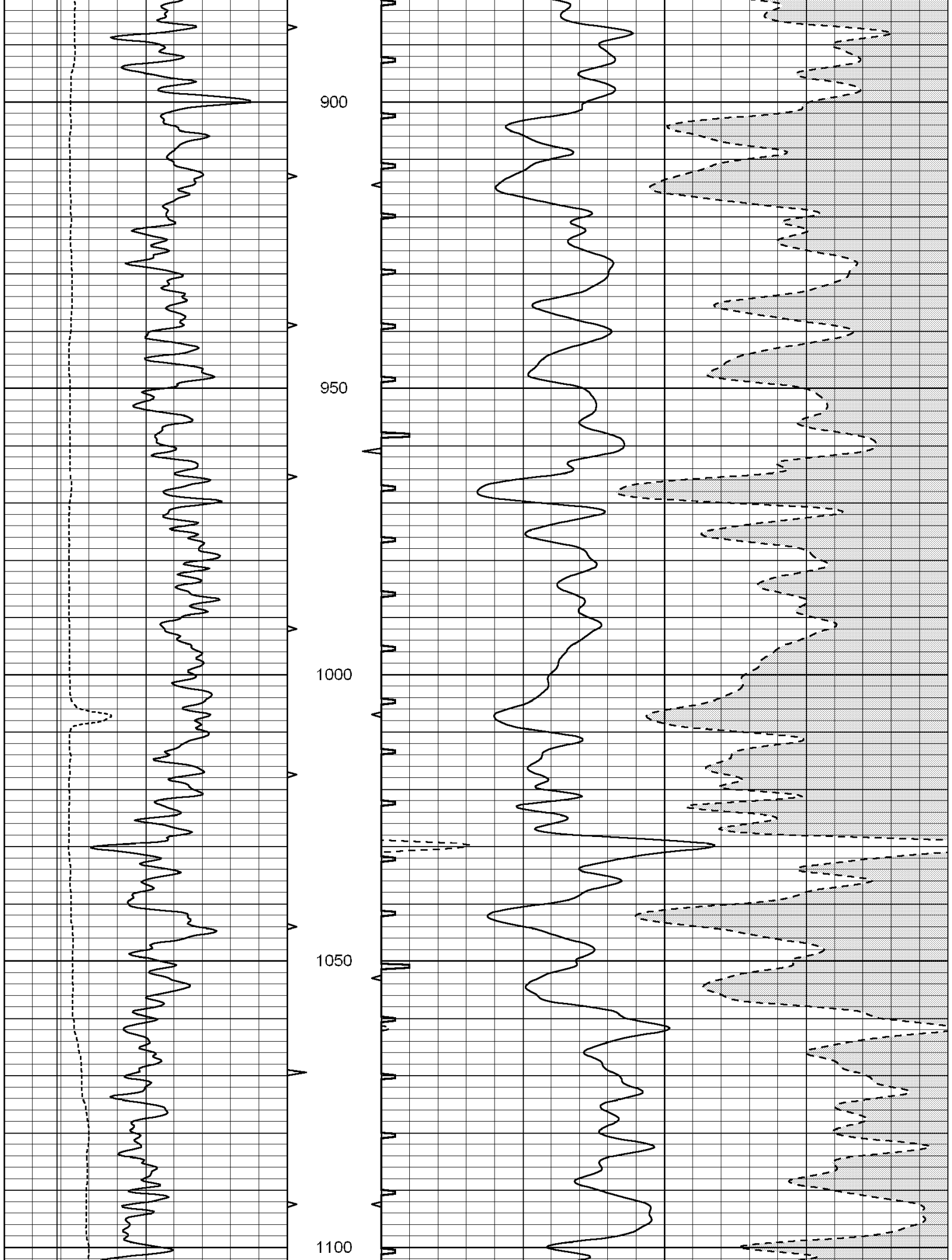
700

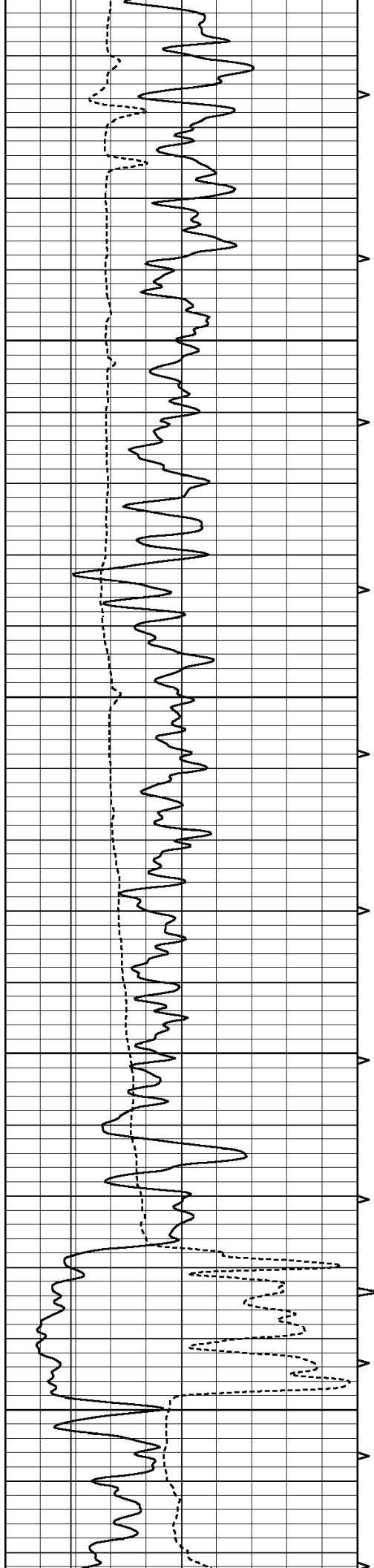
750

800

850





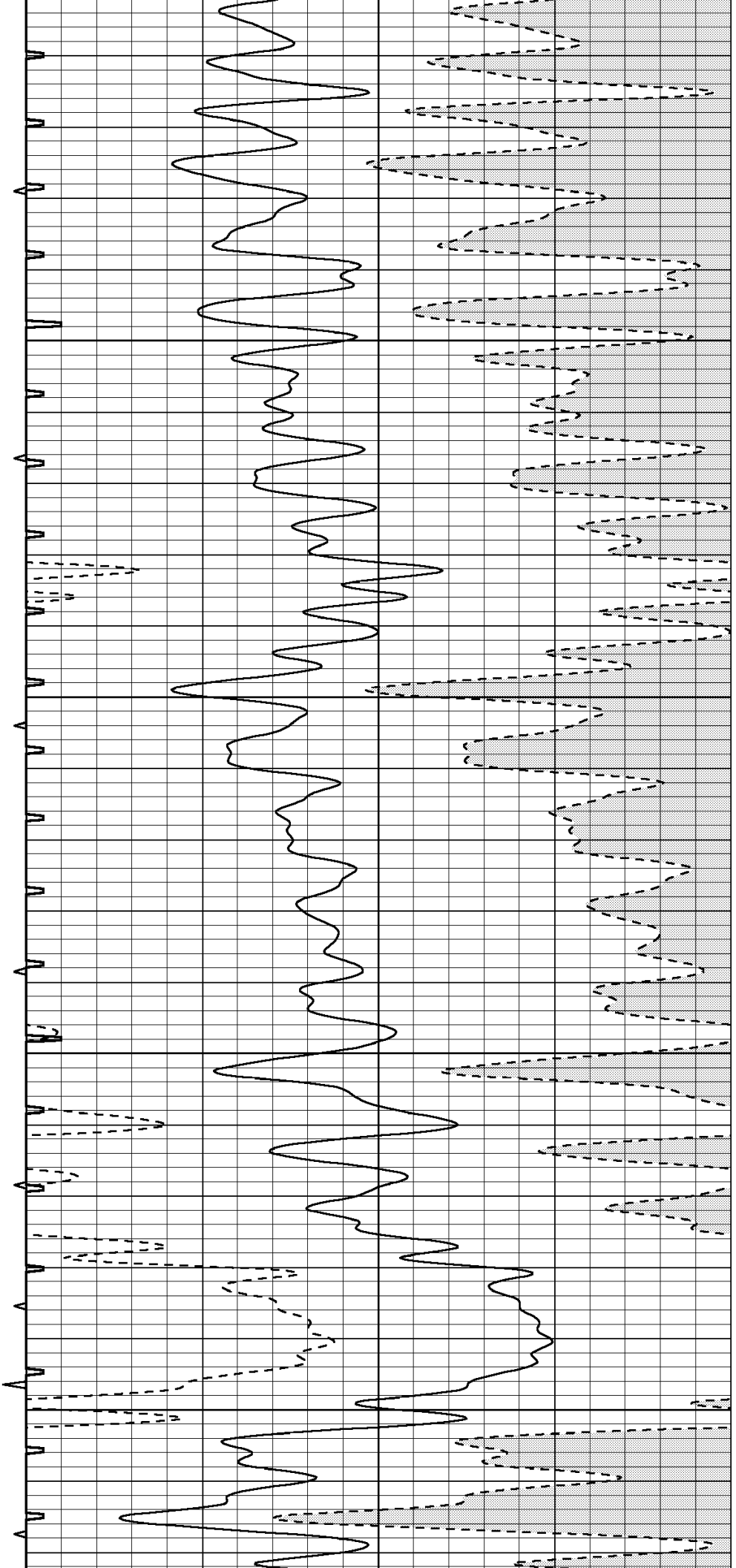


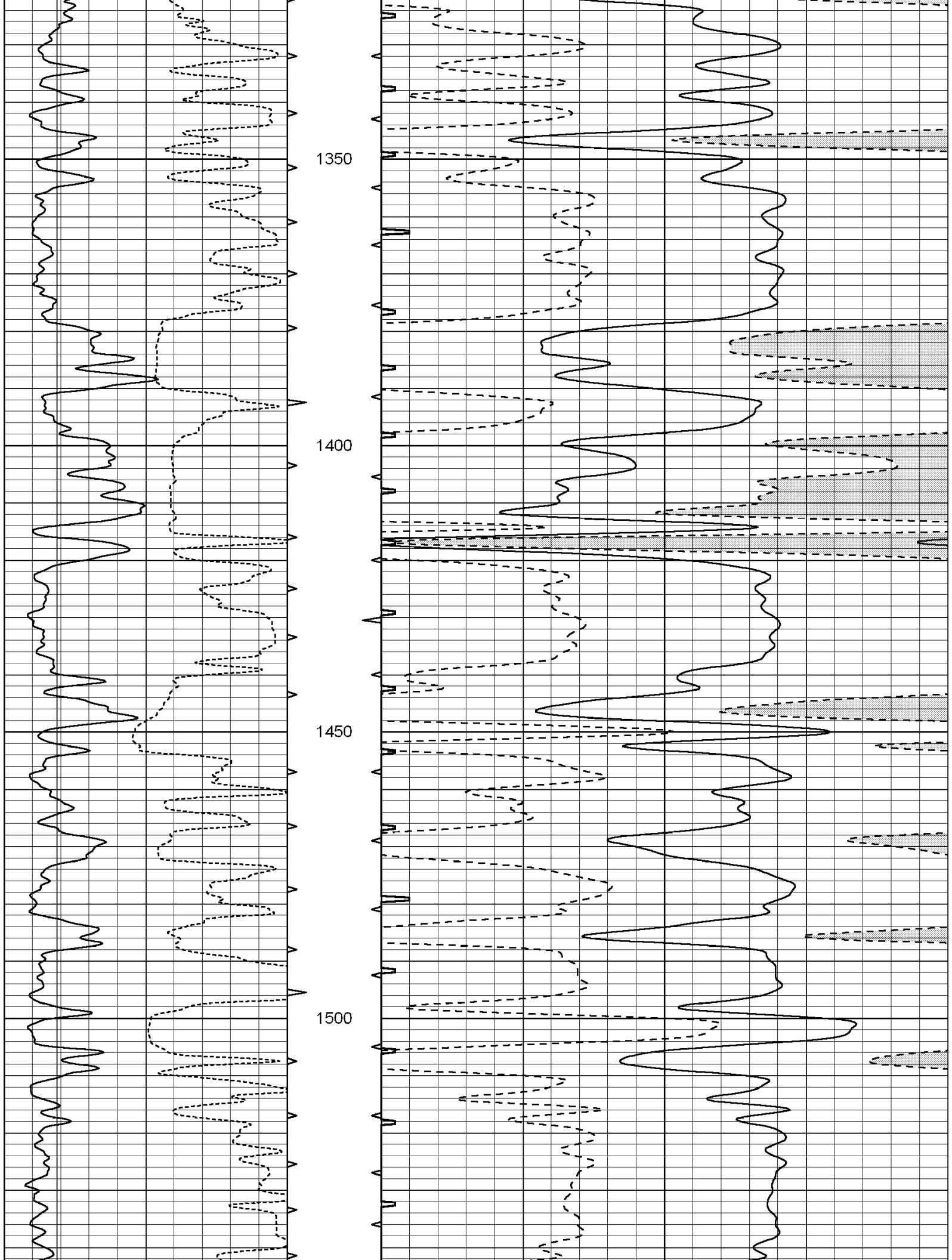
1150

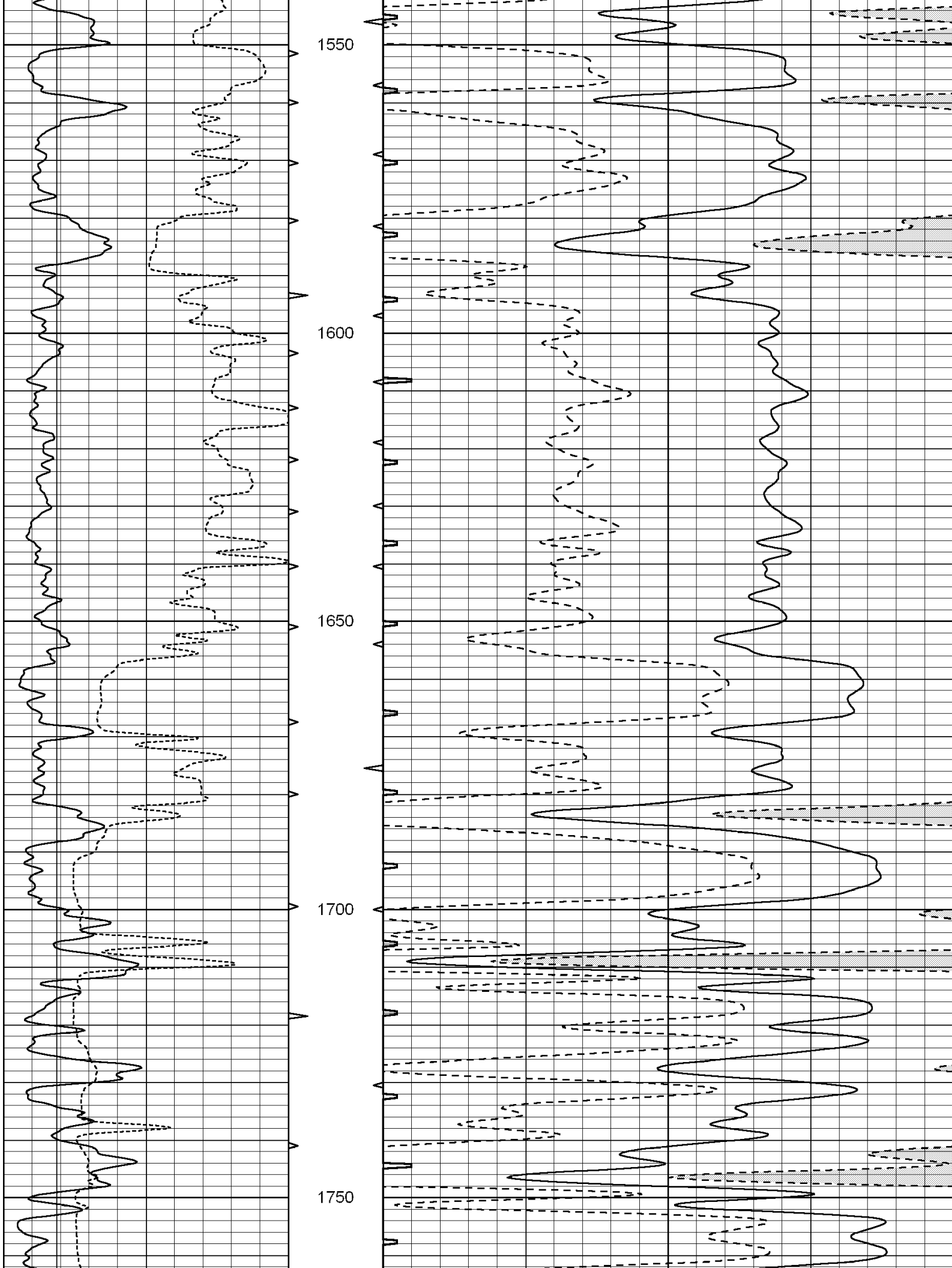
1200

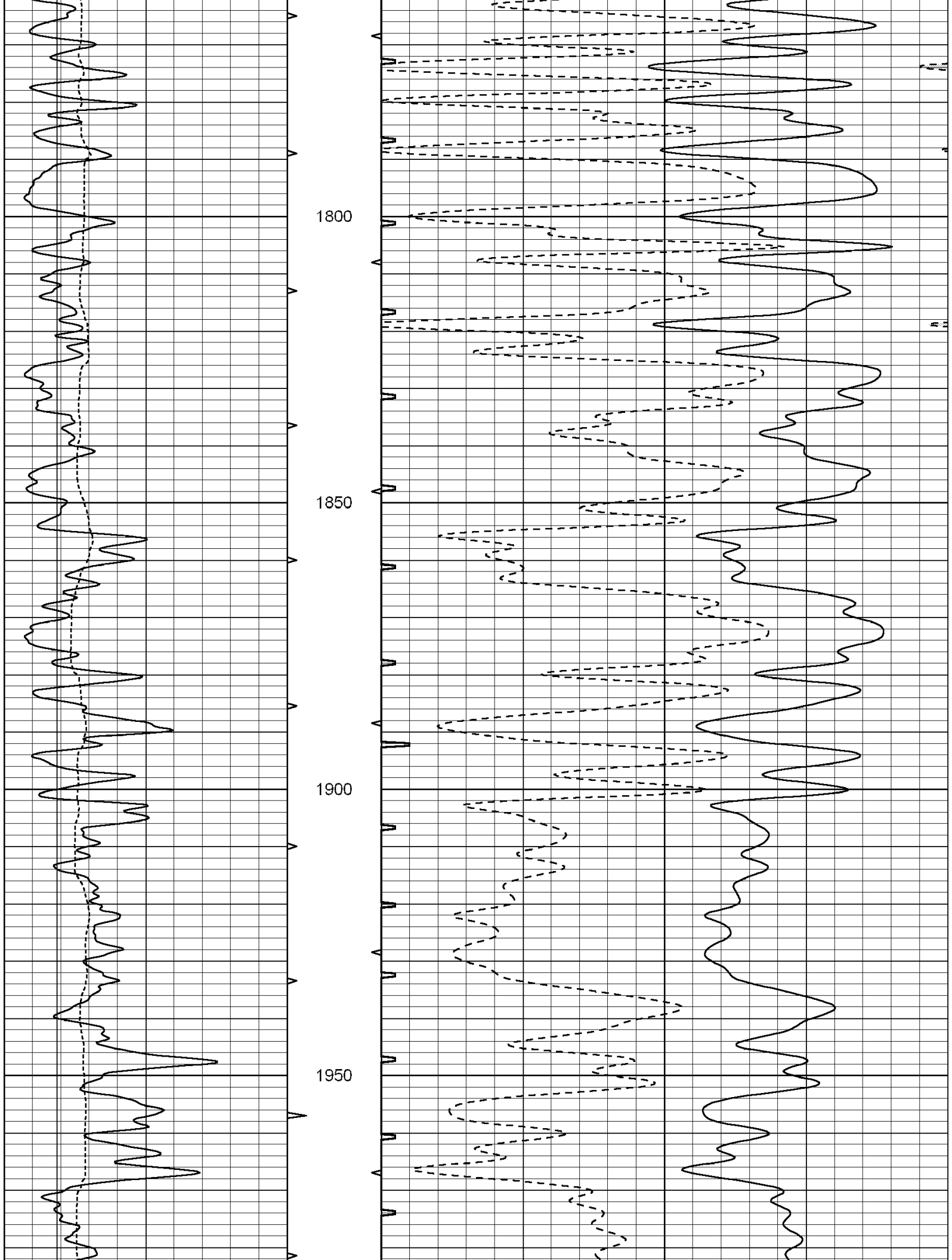
1250

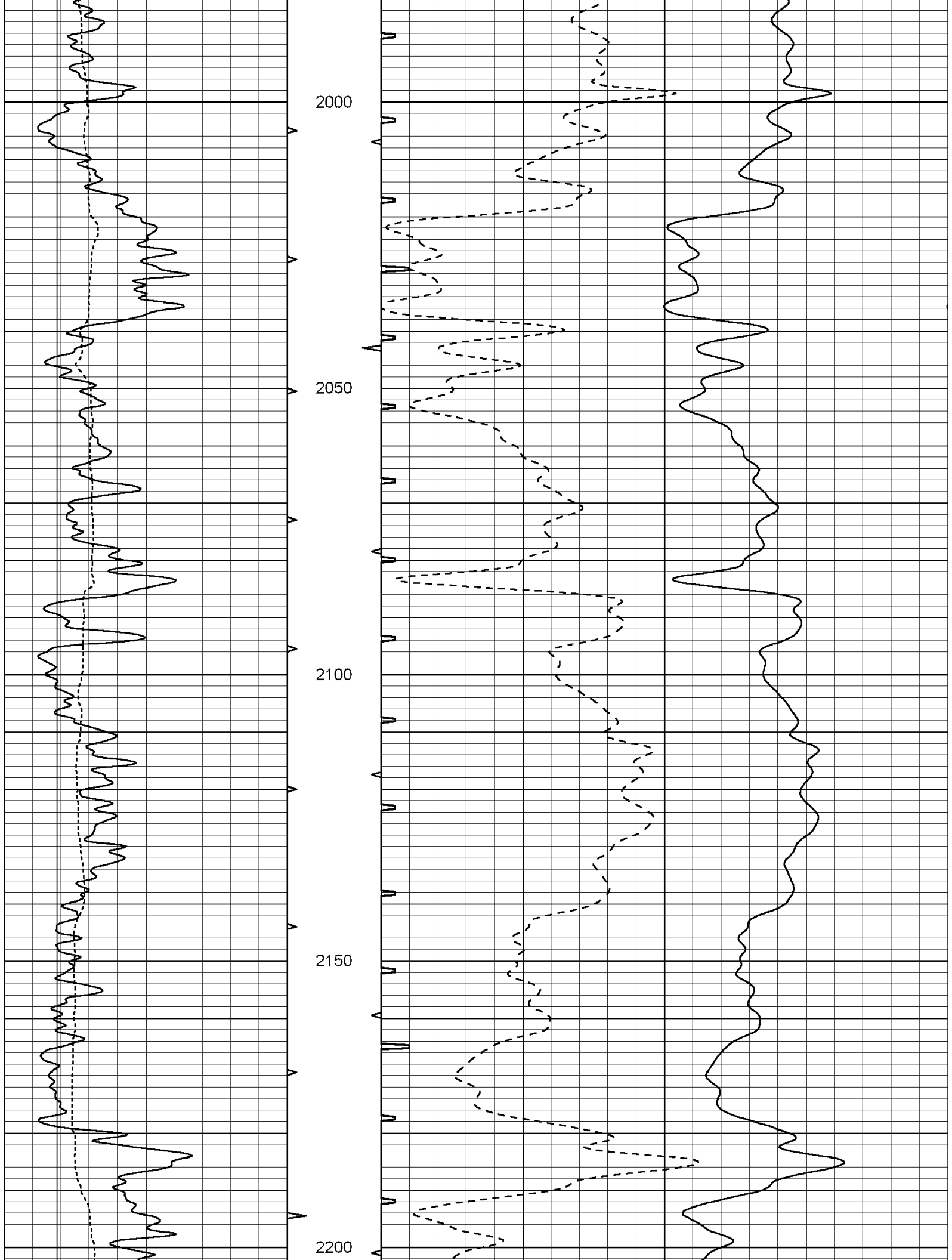
1300

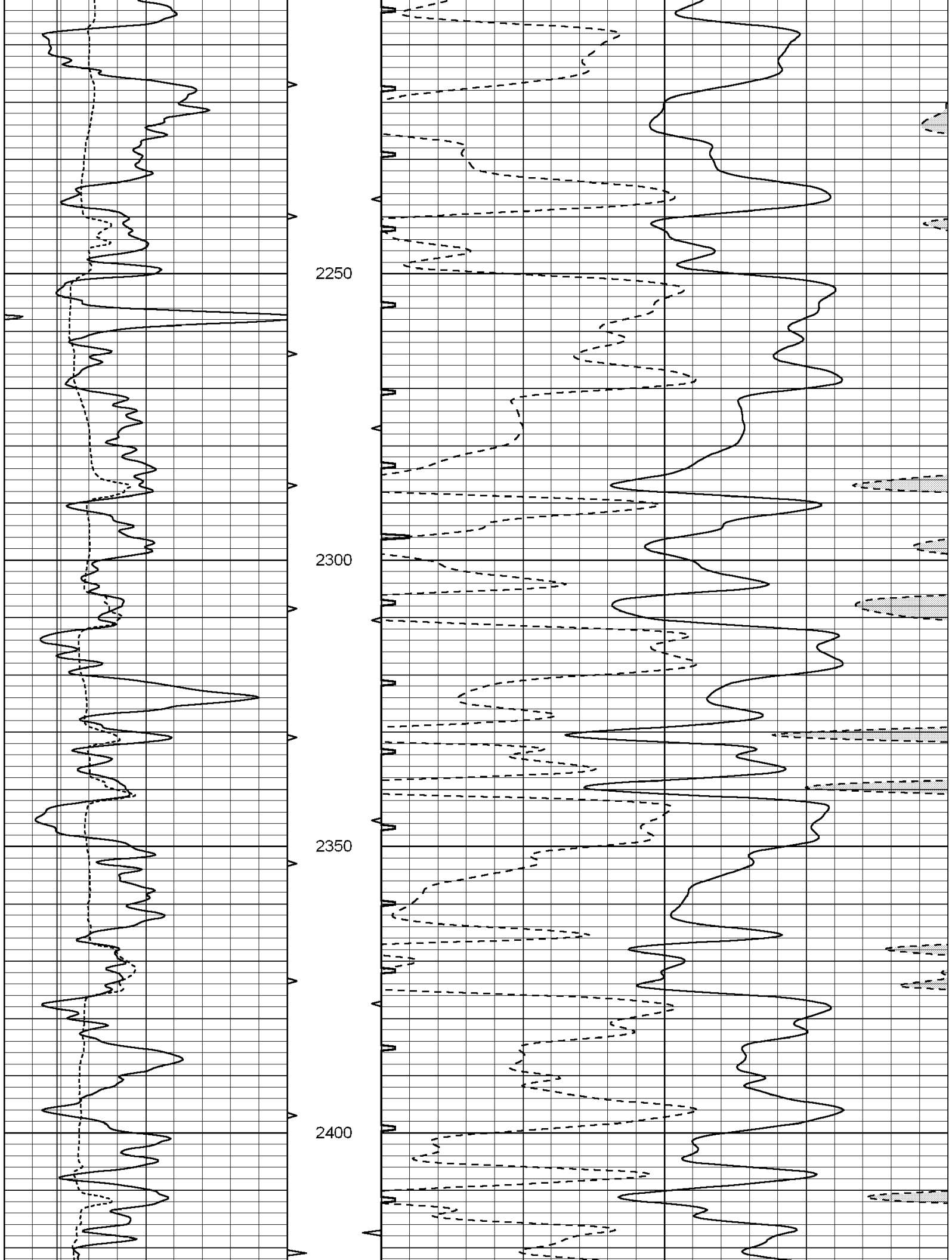


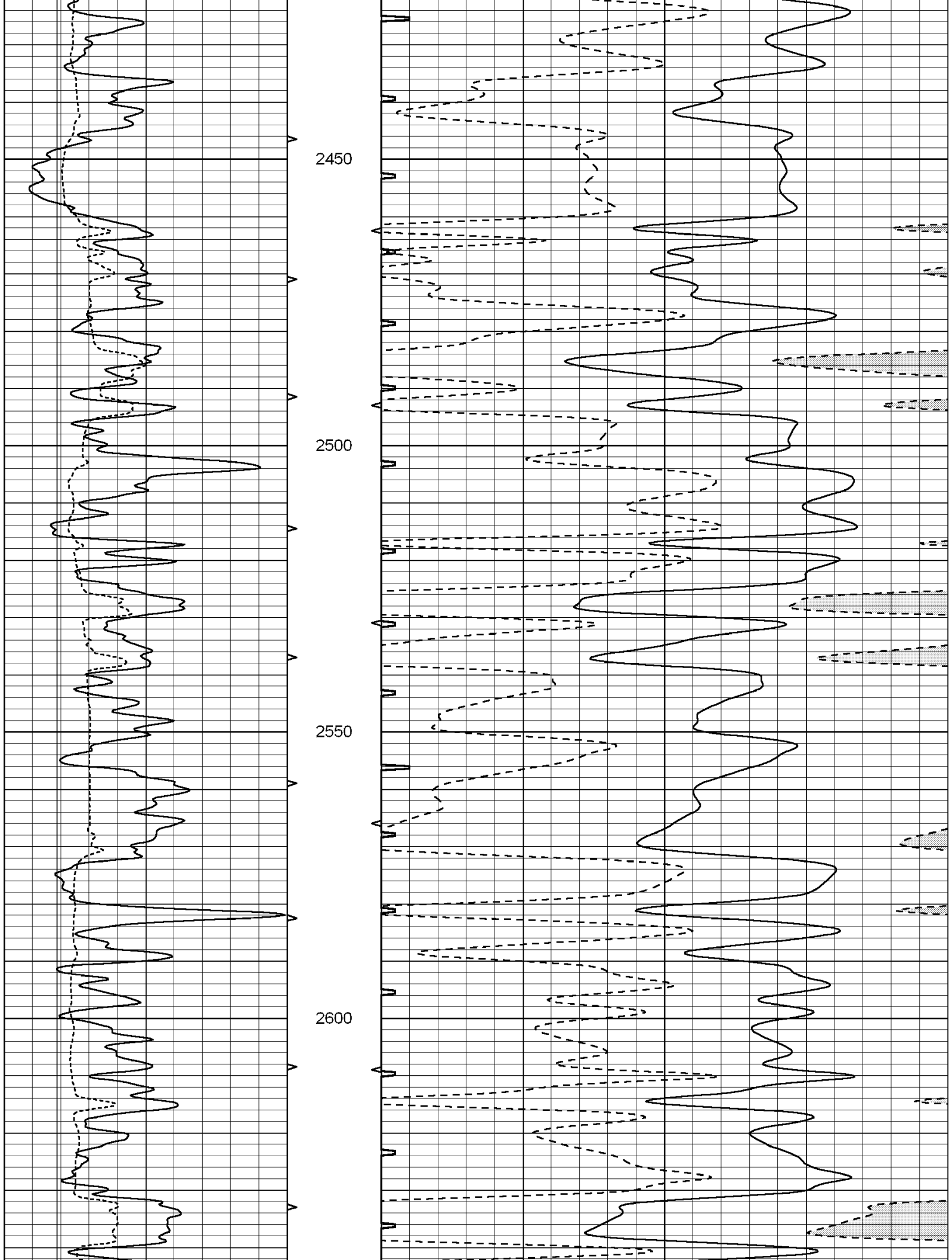


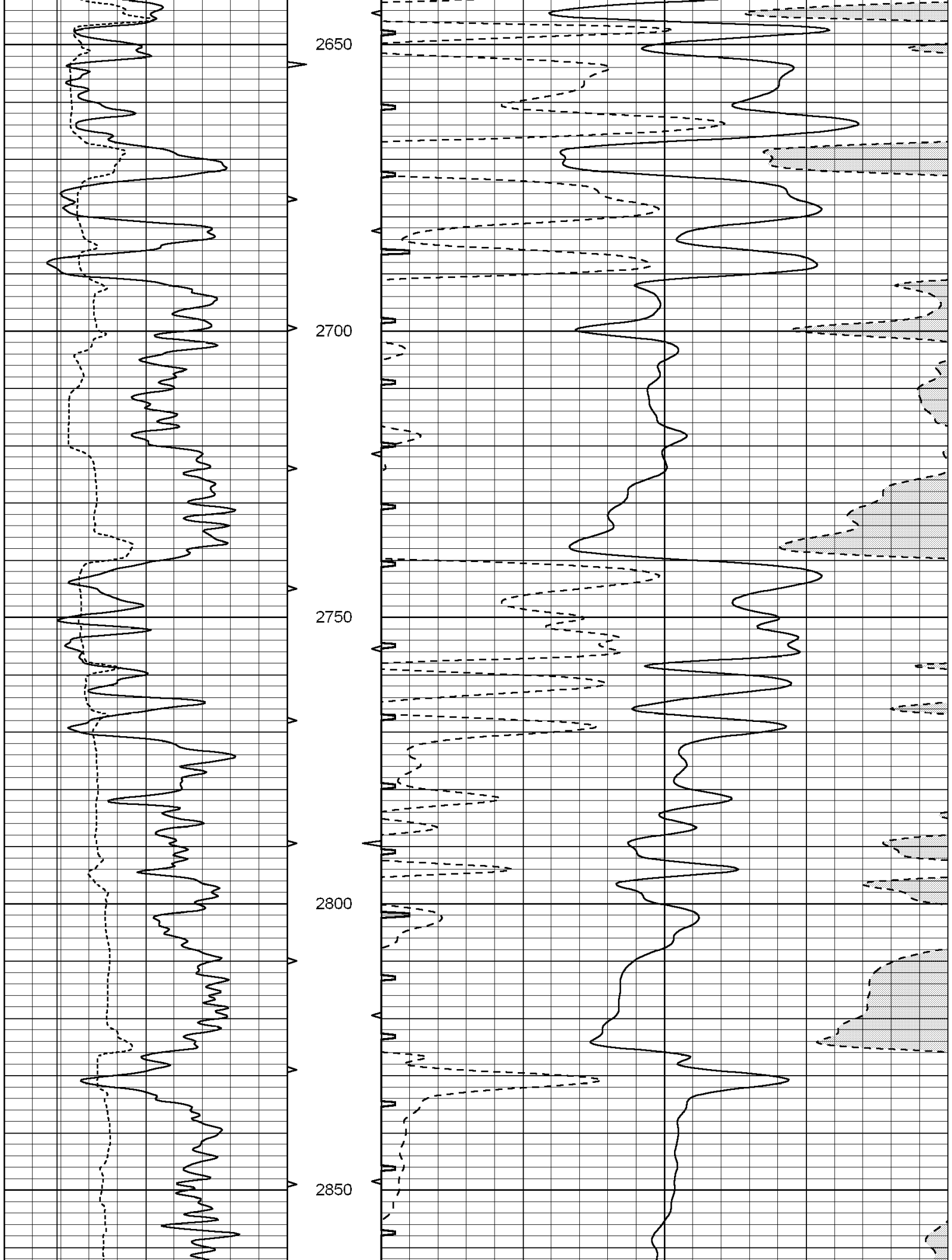


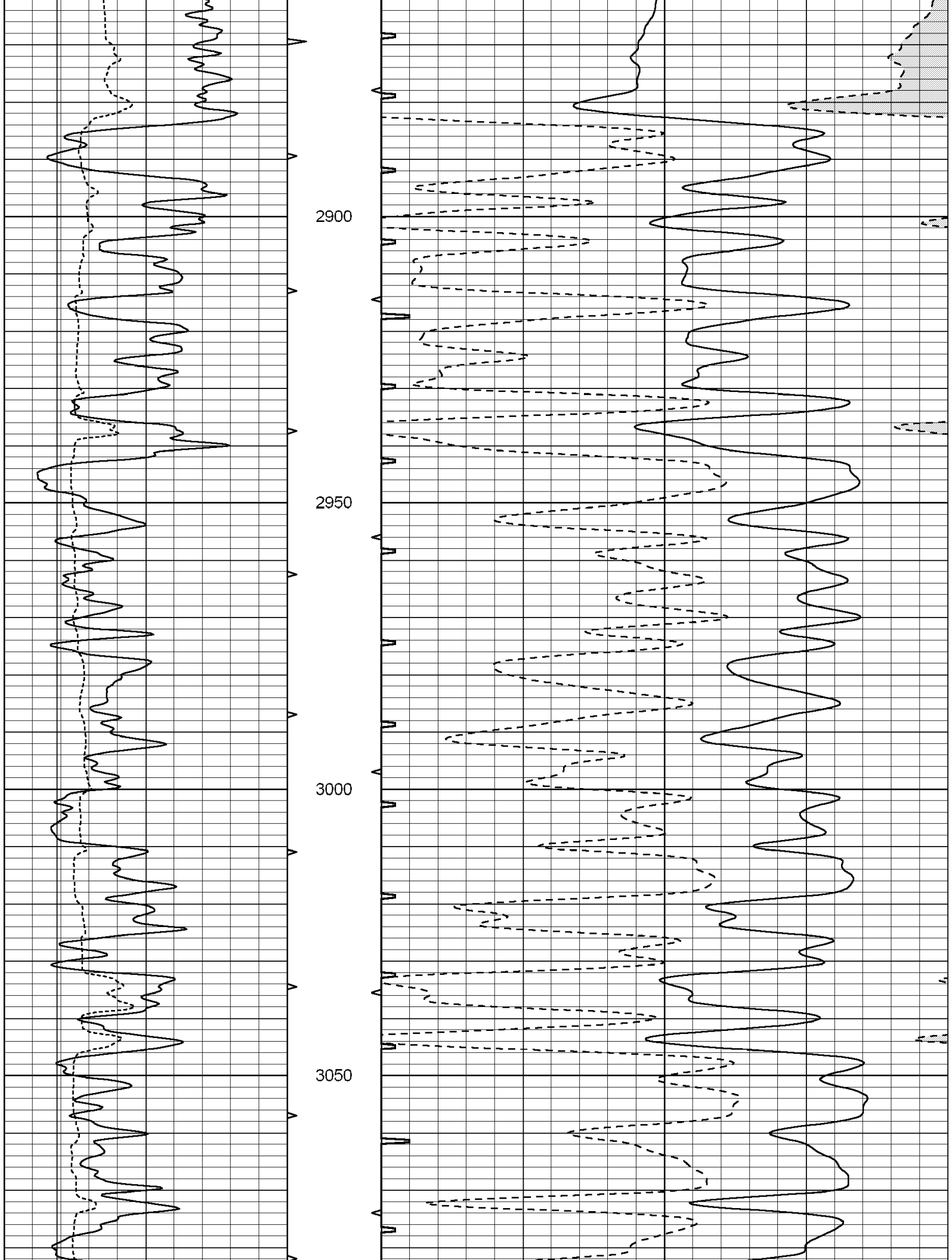


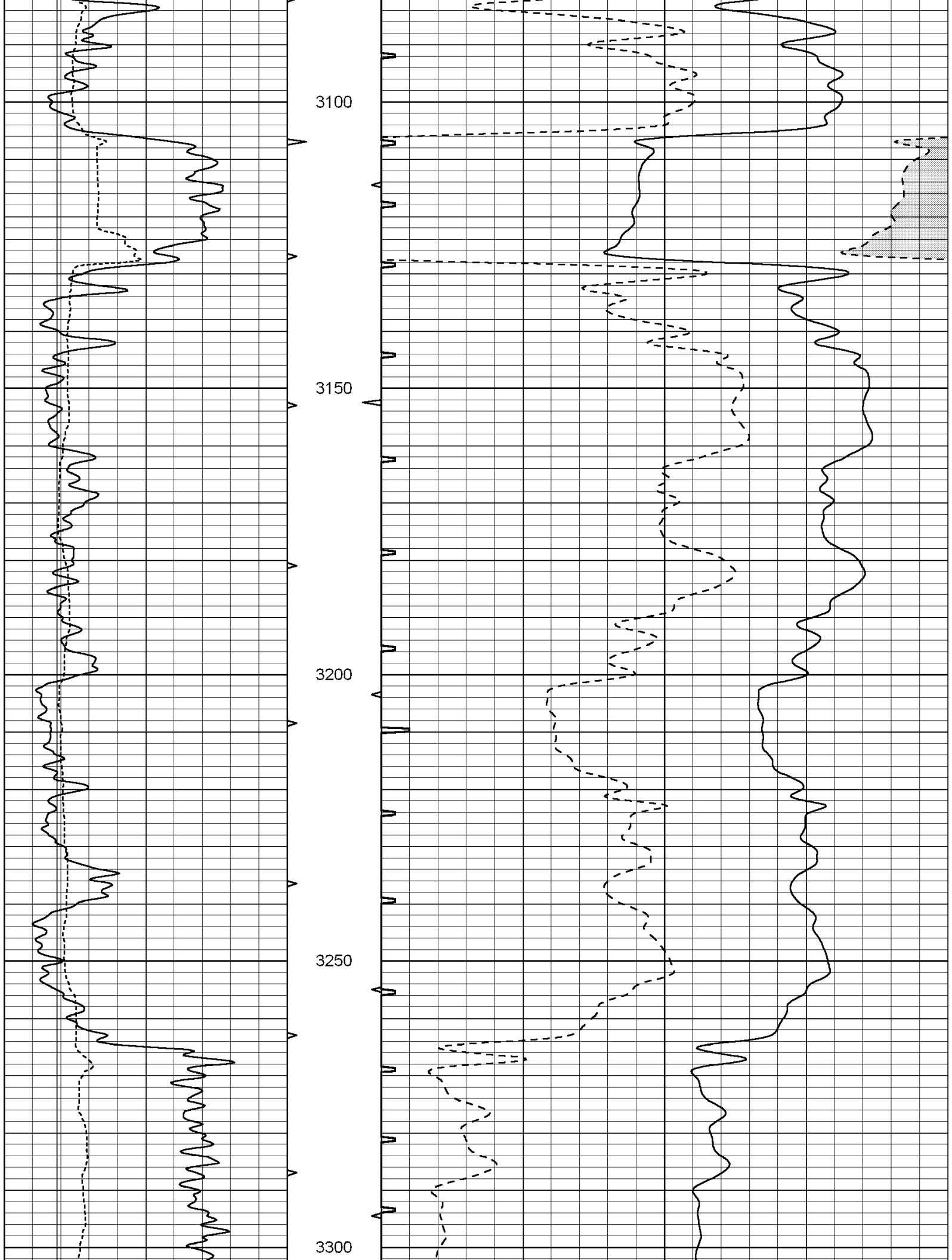


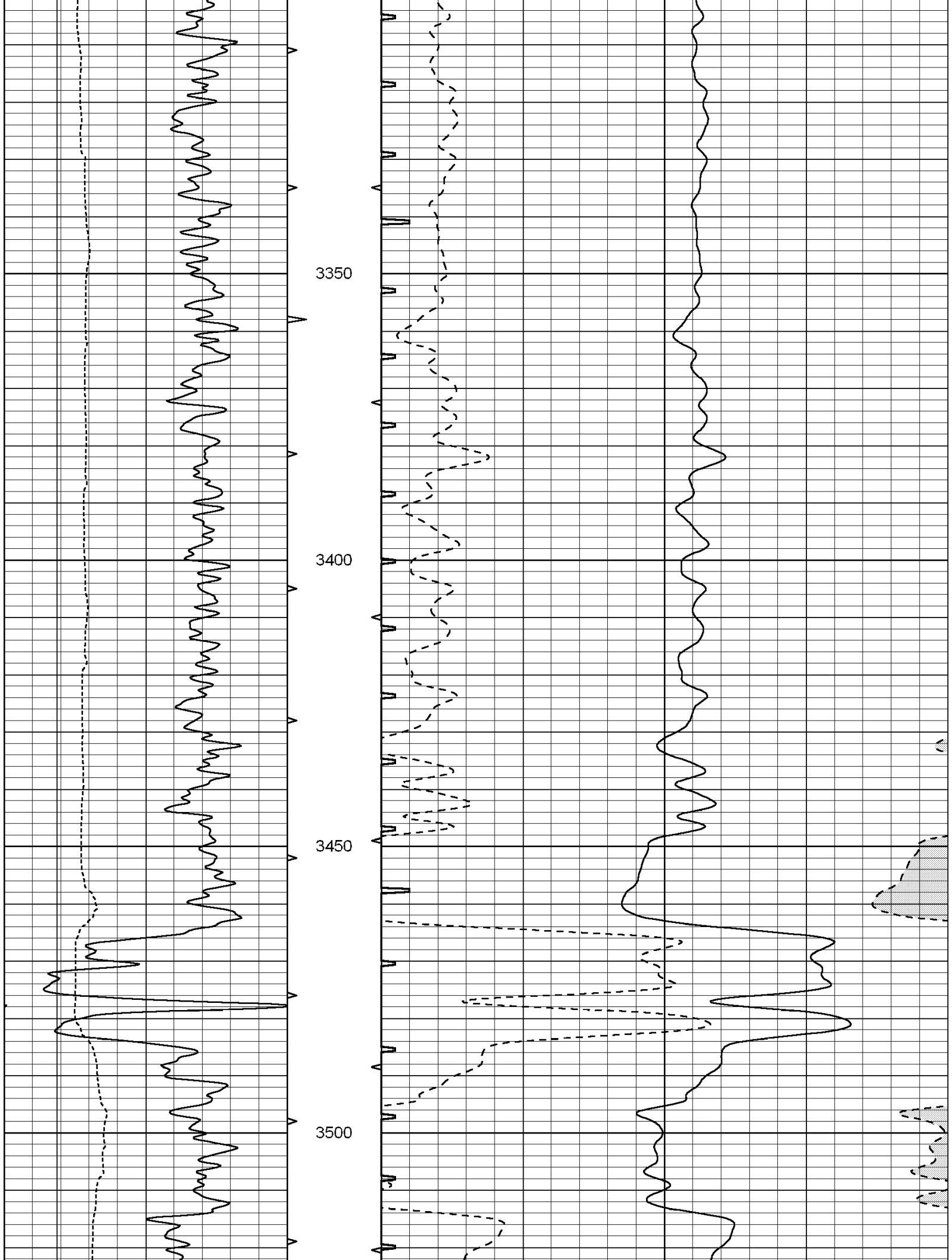


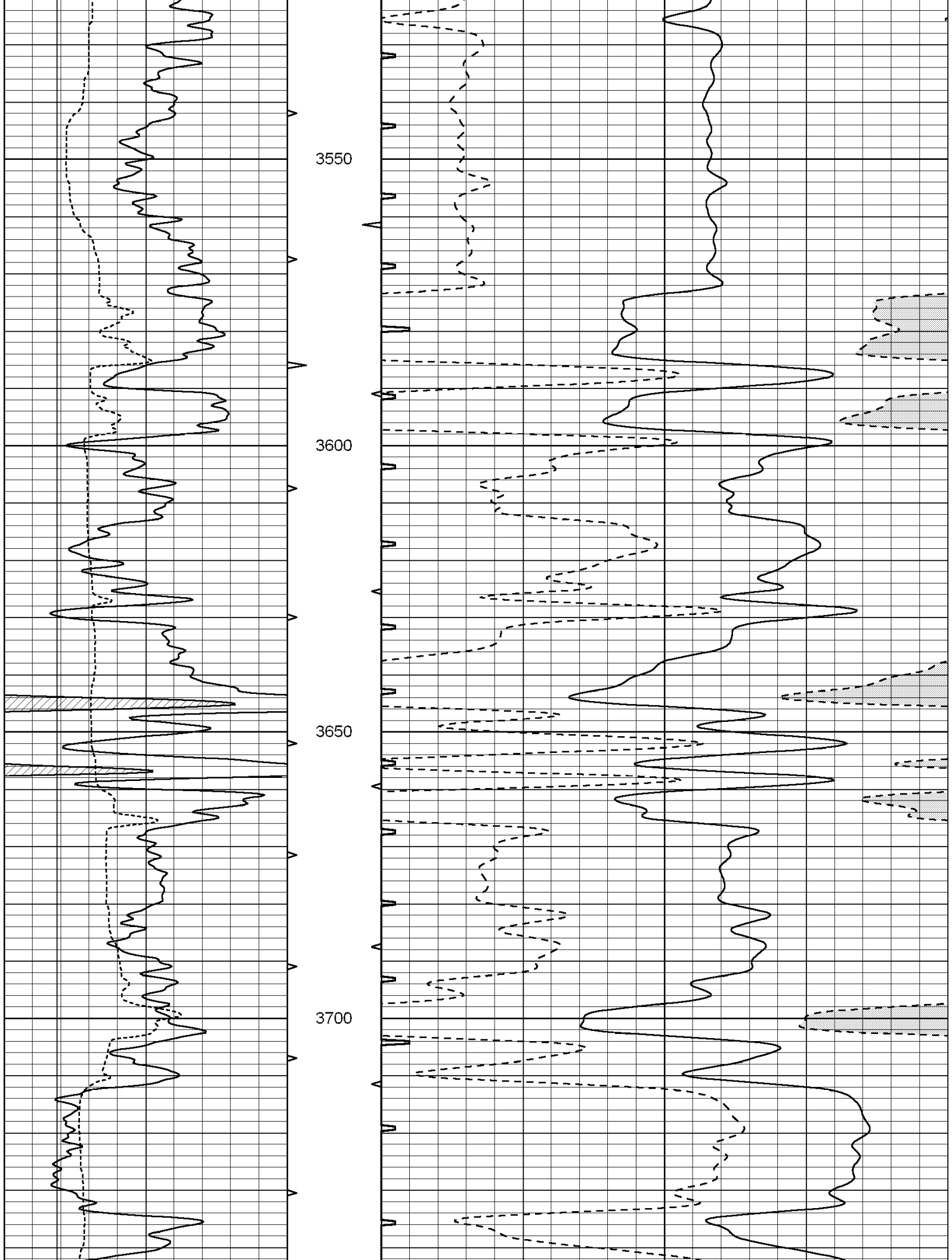


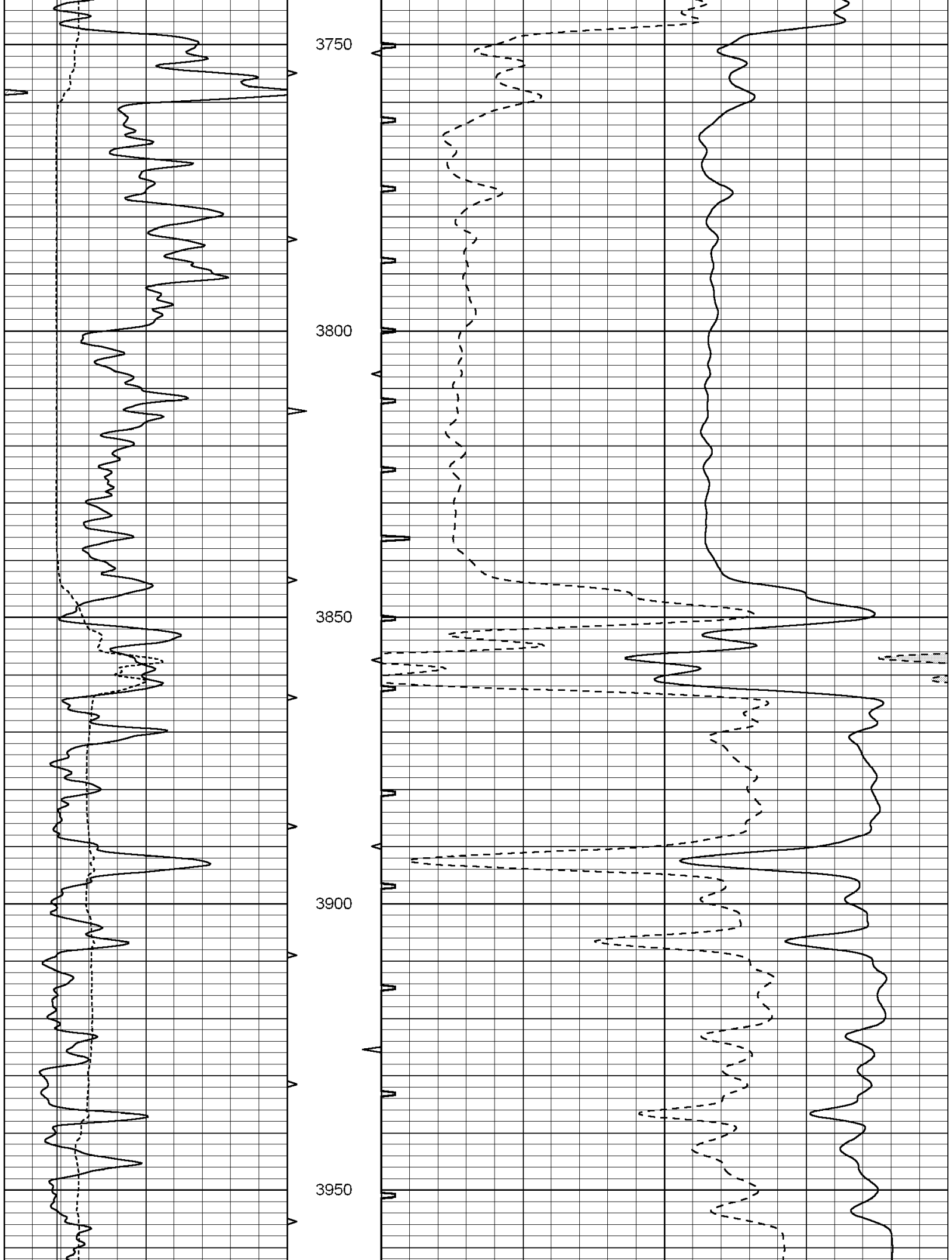


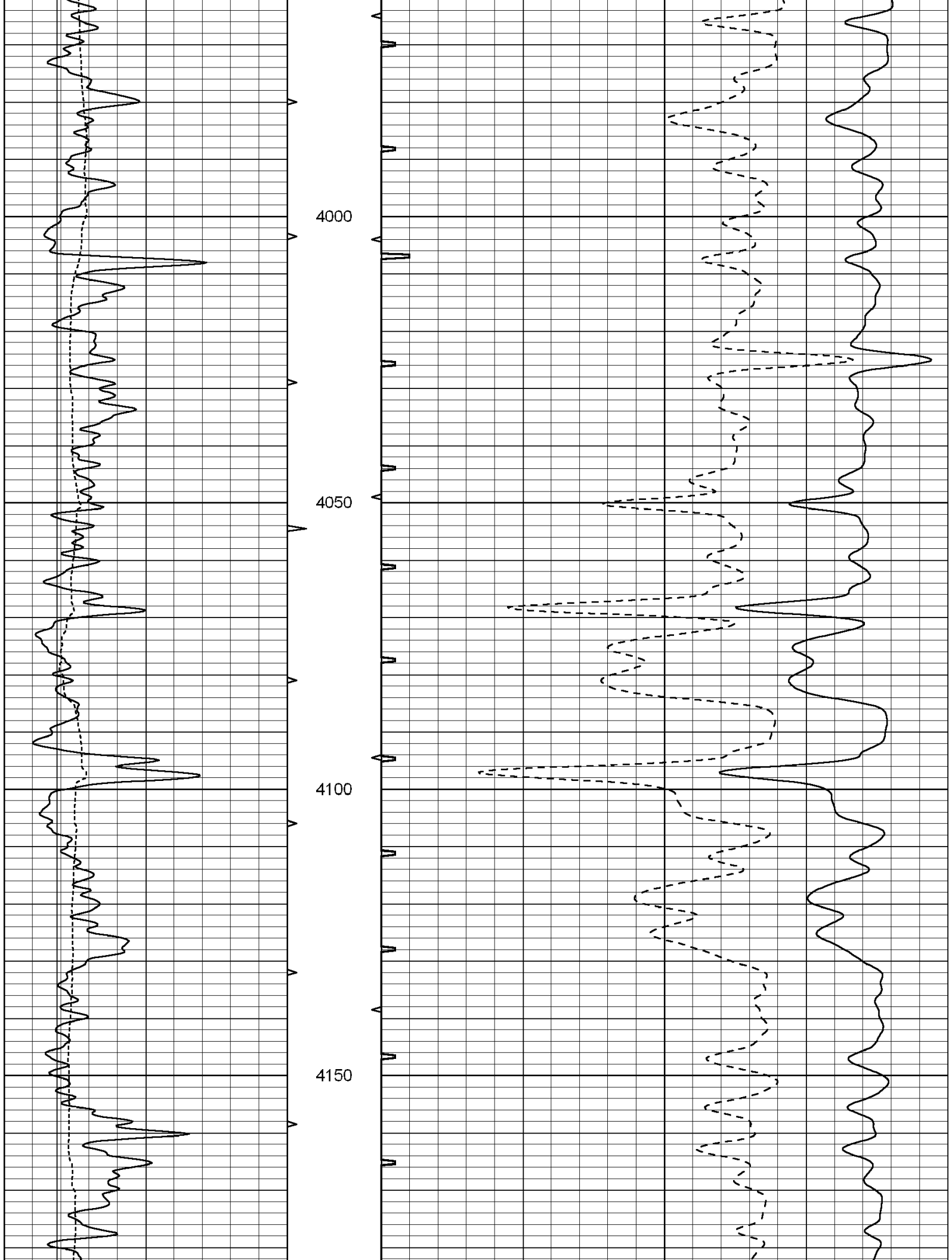


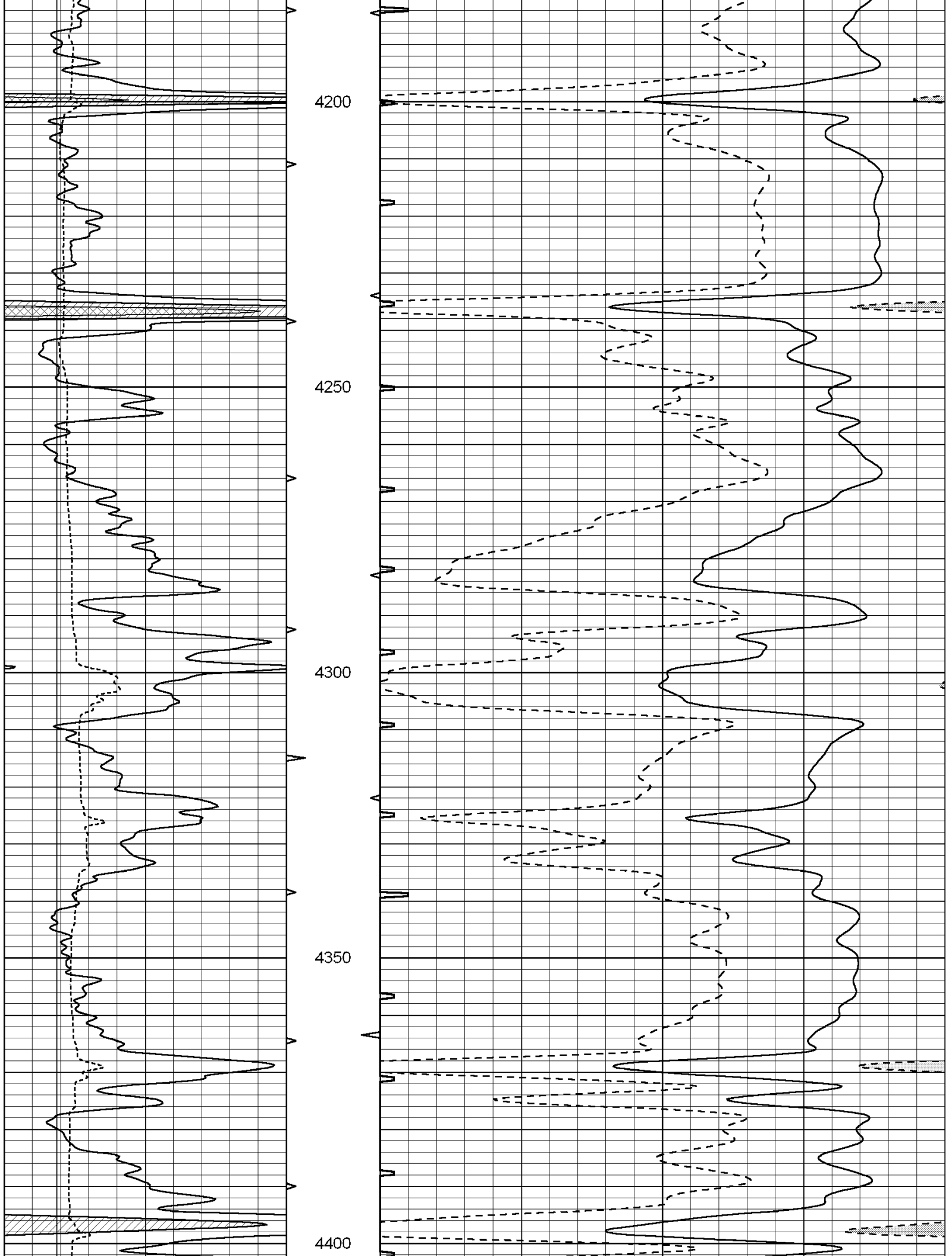


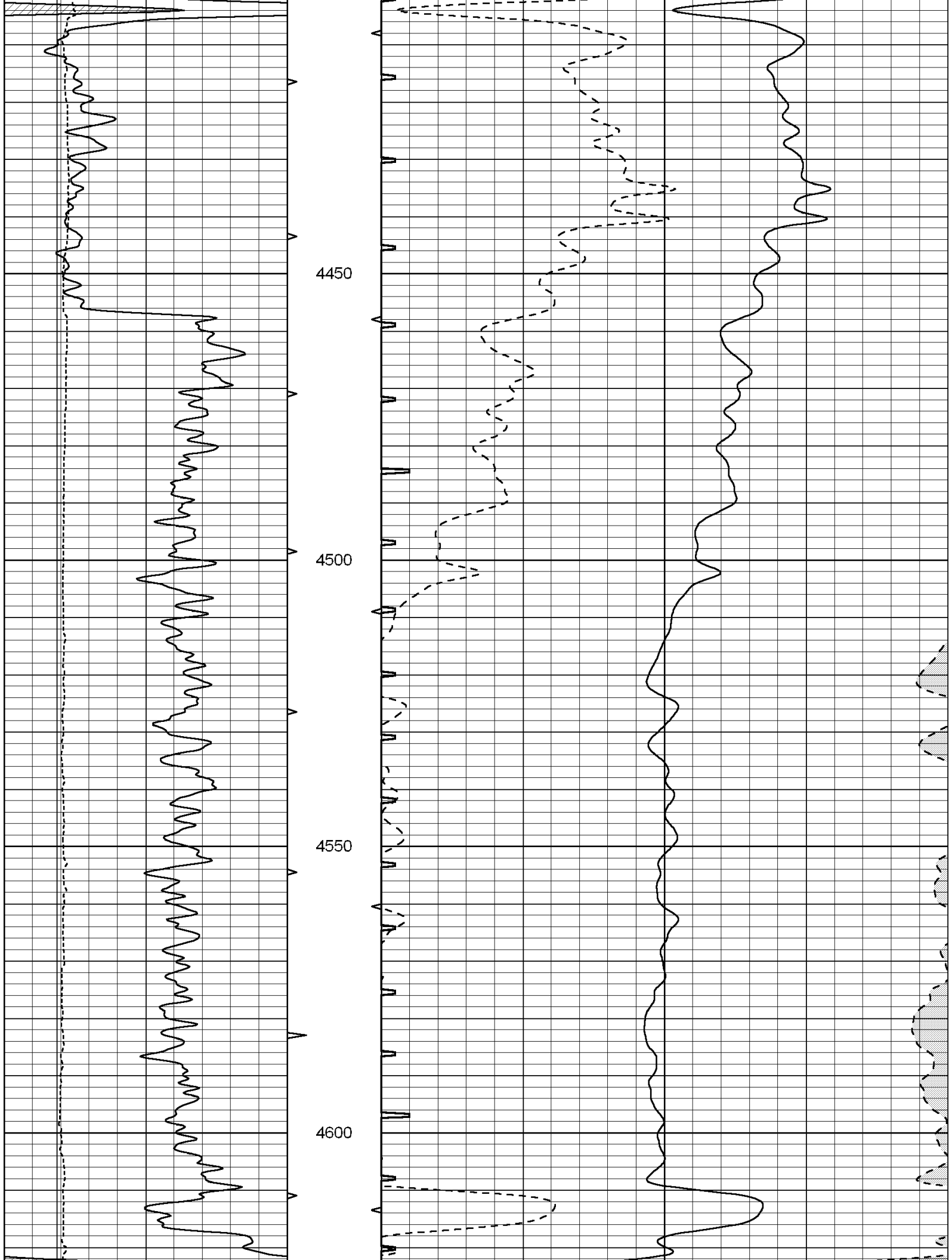


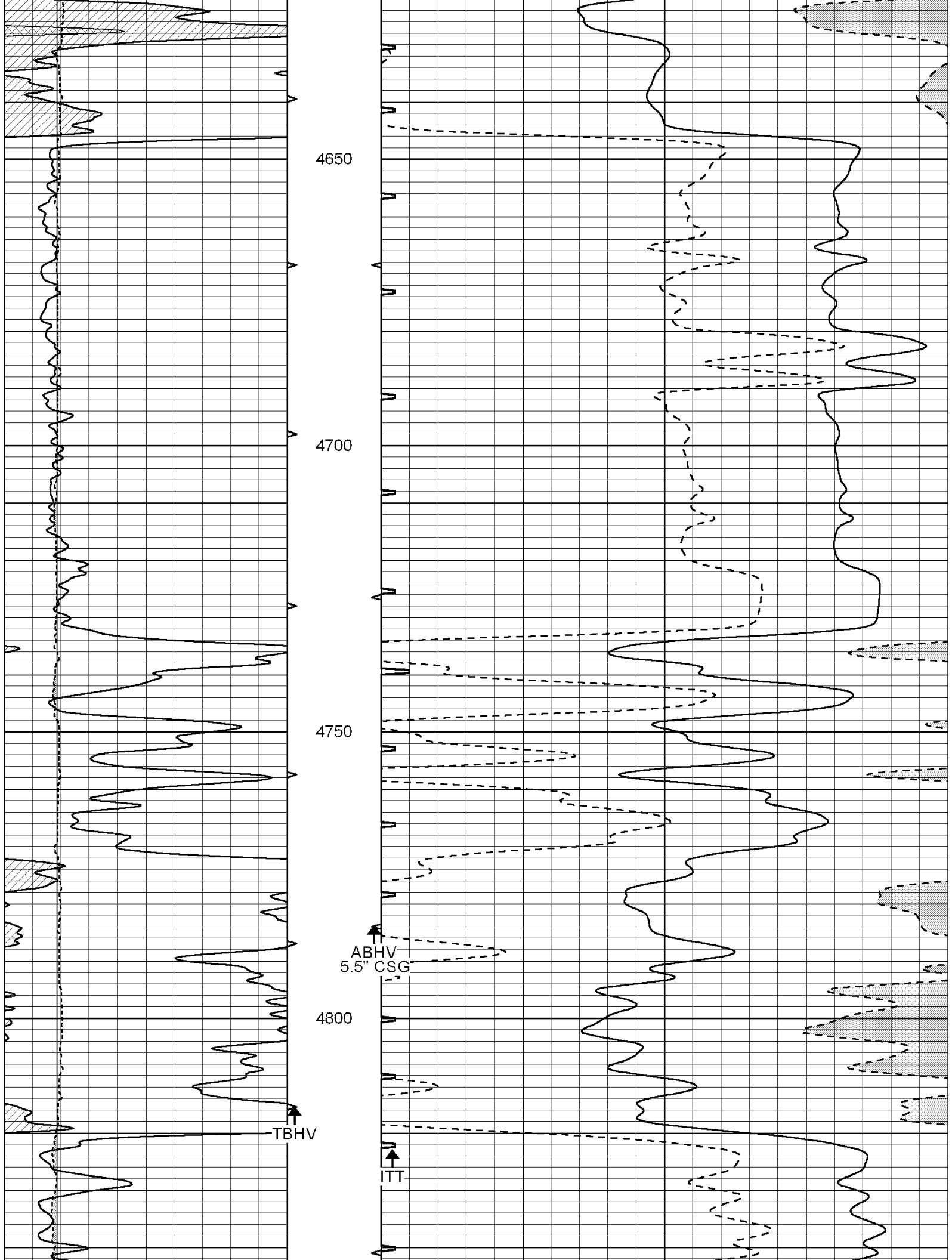


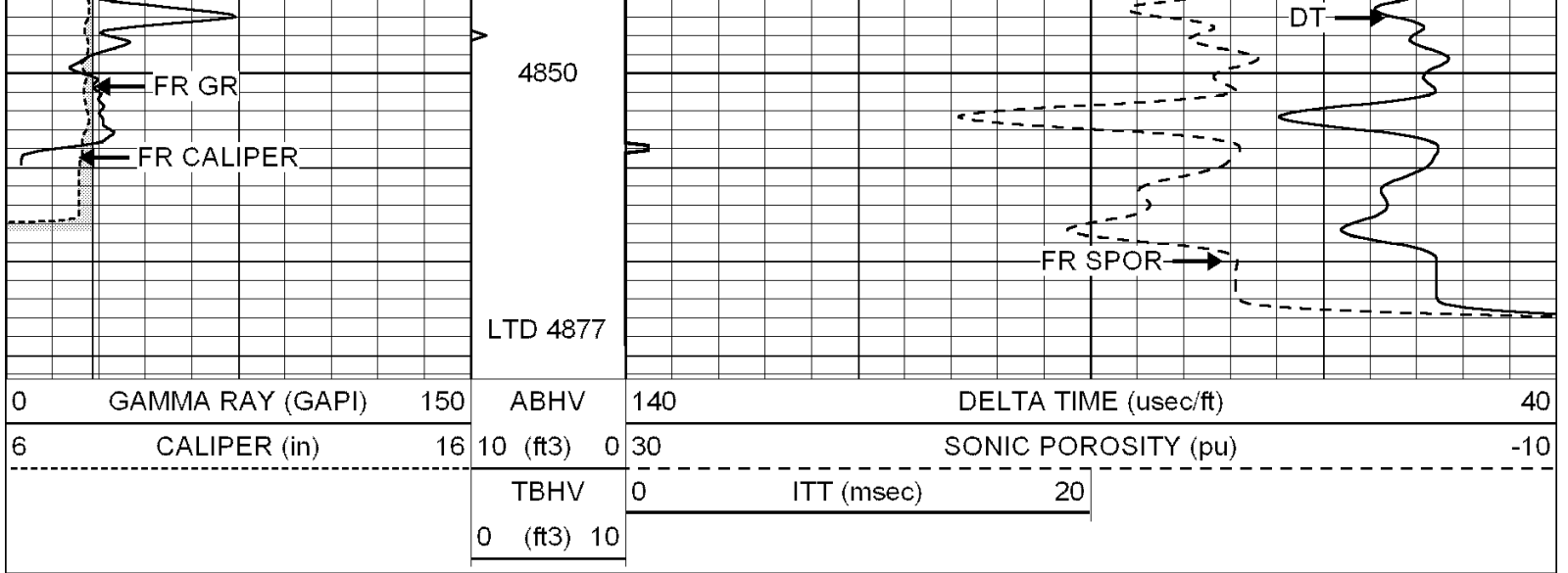








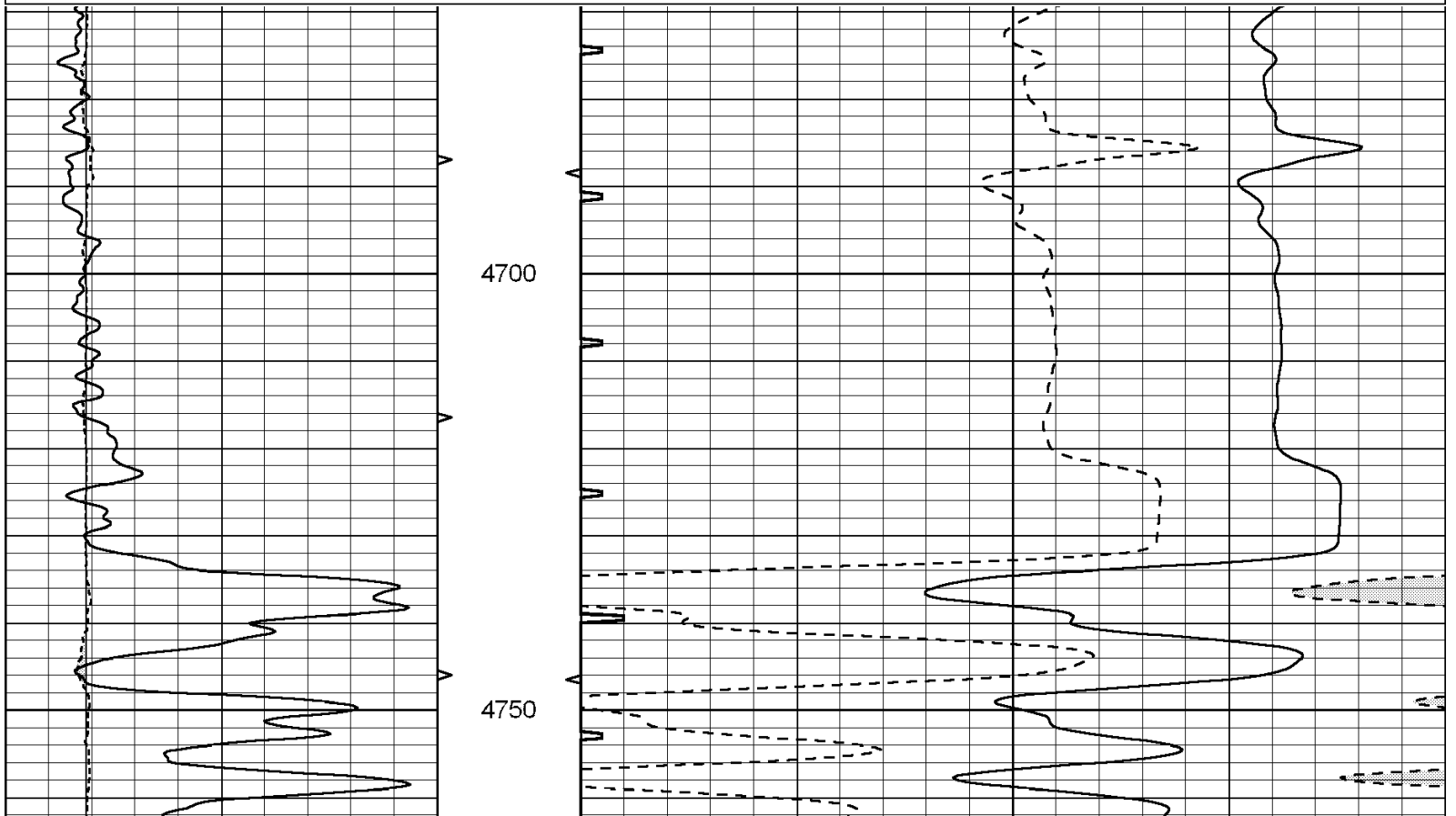
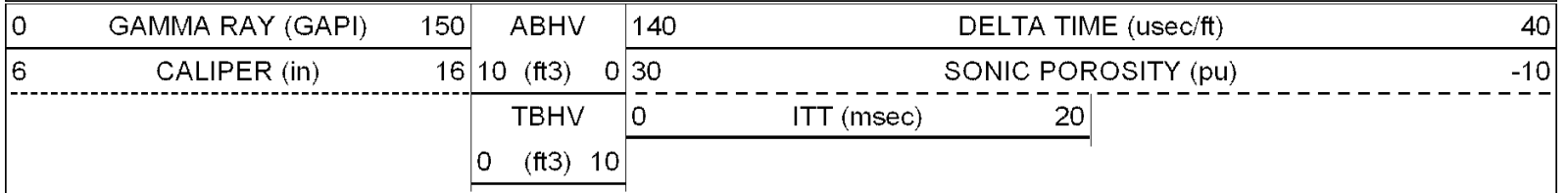


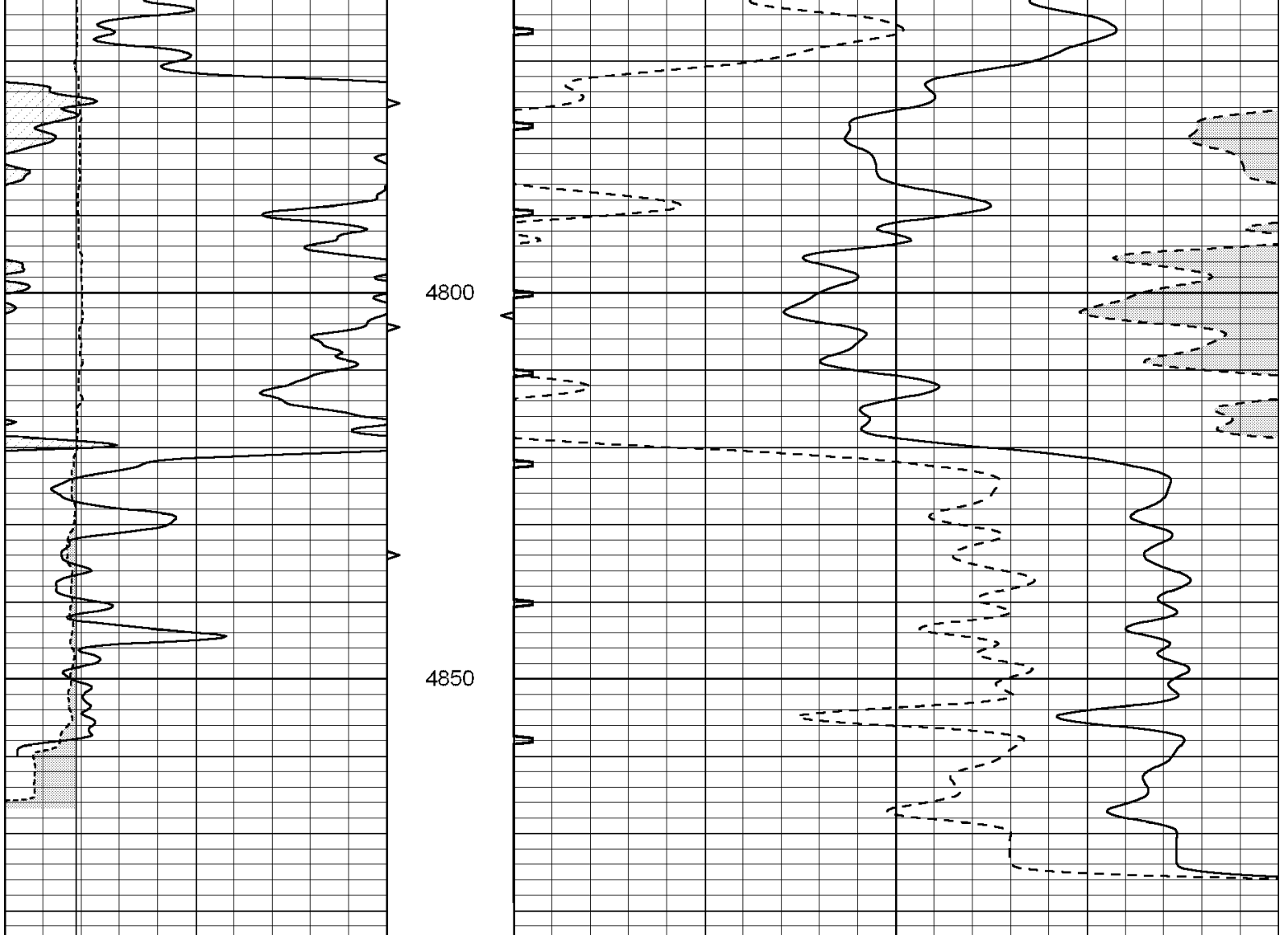


SUPERIOR  
Hays,  
Kansas

# REPEAT SECTION

Database File: 004086ddn.db  
 Dataset Pathname: pass5.1  
 Presentation Format: \_slt  
 Dataset Creation: Fri Jul 31 18:08:20 2009 by Calc Open-Cased 090629  
 Charted by: Depth in Feet scaled 1:240





0	GAMMA RAY (GAPI)	150	ABHV	140	DELTA TIME (usec/ft)	40
6	CALIPER (in)	16	10 (ft3)	0 30	SONIC POROSITY (pu)	-10
			TBHV	0	ITT (msec)	20
			0 (ft3)	10		