



**SUPERIOR
Hays,
Kansas**

**DUAL
INDUCTION
LOG**

Company: DIXON ENERGY, INC.
Well: ROLF LAND #3
Field: BARKIN
County: KINGMAN
State: KANSAS

Company: DIXON ENERGY, INC.
Well: ROLF LAND #3
Field: BARKIN
County: KINGMAN
State: KANSAS

Location: 1250' FSL & 1330' FWL
API #: 15-095-22192-0000
SEC 18 TWP 30S RGE 10W
Permanent Datum: GROUND LEVEL
Log Measured From: KELLY BUSHING 11' A.G.L.
Drilling Measured From: KELLY BUSHING
Elevation: 1792
Other Services: CDL/CNL MEL/SON
K.B. 1803
D.F. 1801
G.L. 1792

Date	7/31/09
Run Number	ONE
Depth Driller	4875
Depth Logger	4877
Bottom Logged Interval	4875
Top Log Interval	0
Casing Driller	8 5/8" @ 309'
Casing Logger	307'
Bit Size	7 7/8
Type Fluid In Hole	CHEMICAL MUD
Density / Viscosity	9.1 / 50
pH / Fluid Loss	10.5 / 10.4
Source of Sample	FLOWLINE
Rm @ Meas. Temp	0.90 @ 98F
Rmf @ Meas. Temp	0.68 @ 98F
Rmc @ Meas. Temp	1.18 @ 98F
Source of Rmf / Rmc	CAL/CAL
Rm @ BHT	0.71 @ 124F
Time Circulation Stopped	2 HOURS
Time Logger on Bottom	
Maximum Recorded Temperature	124F
Equipment Number	680
Location	HAYS, KS
Recorded By	JEFF GRONEWEG
Witnessed By	RYAN DIXON

<<< Fold Here >>>

All interpretations are opinions based on inferences from electrical or other measurements and we cannot and do not guarantee the accuracy or correctness of any interpretation, and we shall not, except in the case of gross or willful negligence on our part, be liable or responsible for any loss, costs, damages, or expenses incurred or sustained by anyone resulting from any interpretation made by any of our officers, agents or employees. These interpretations are also subject to our general terms and conditions set out in our current Price Schedule.

Comments

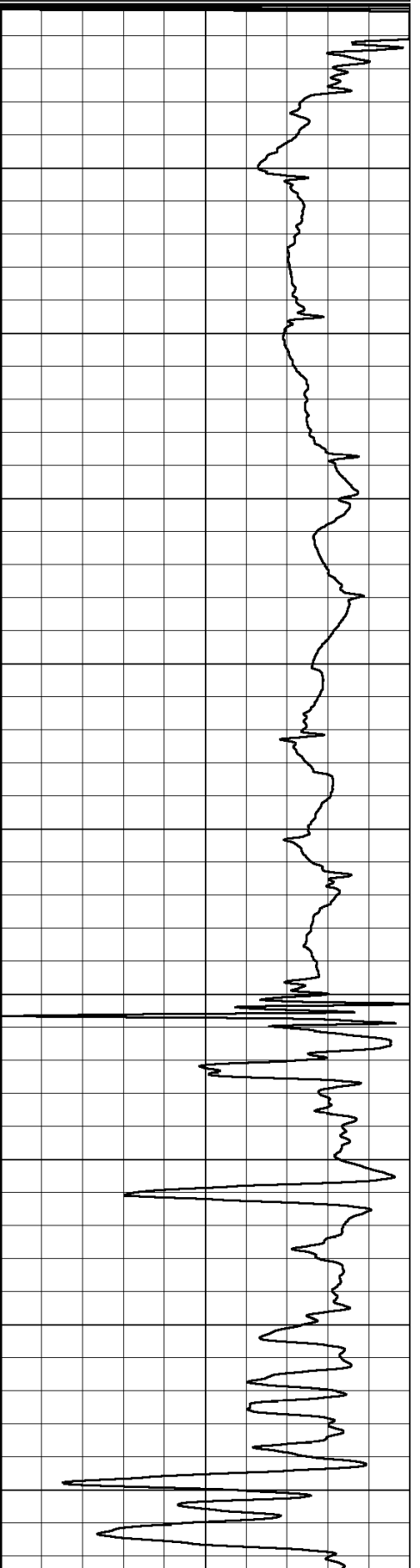
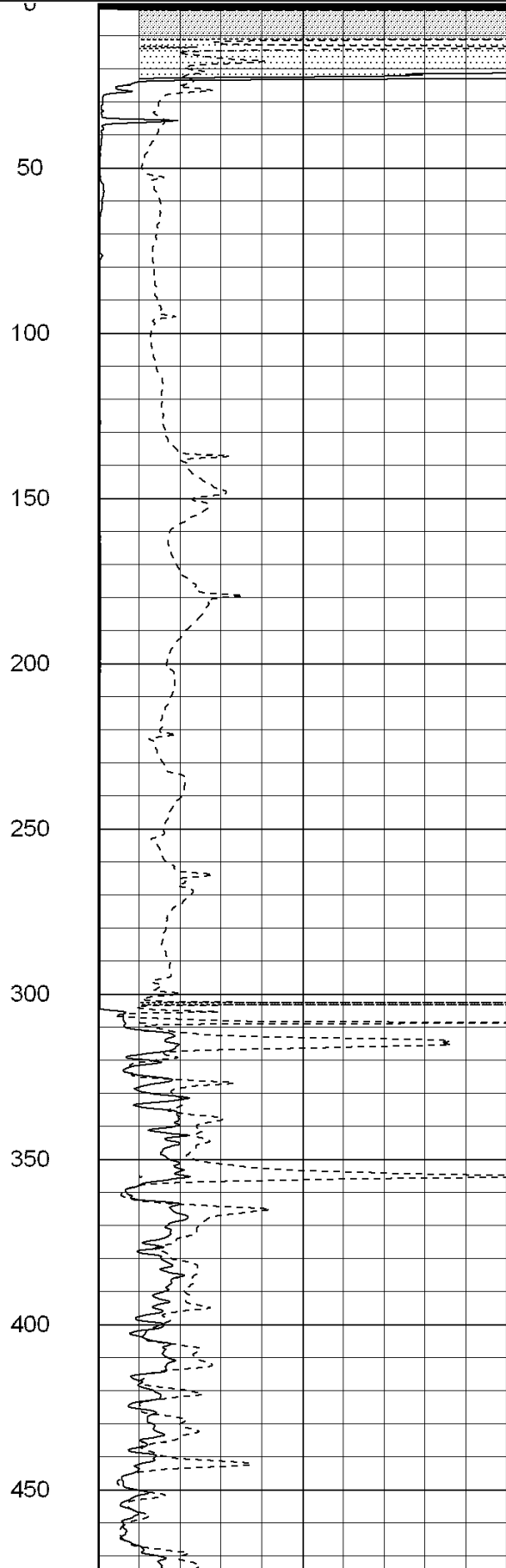
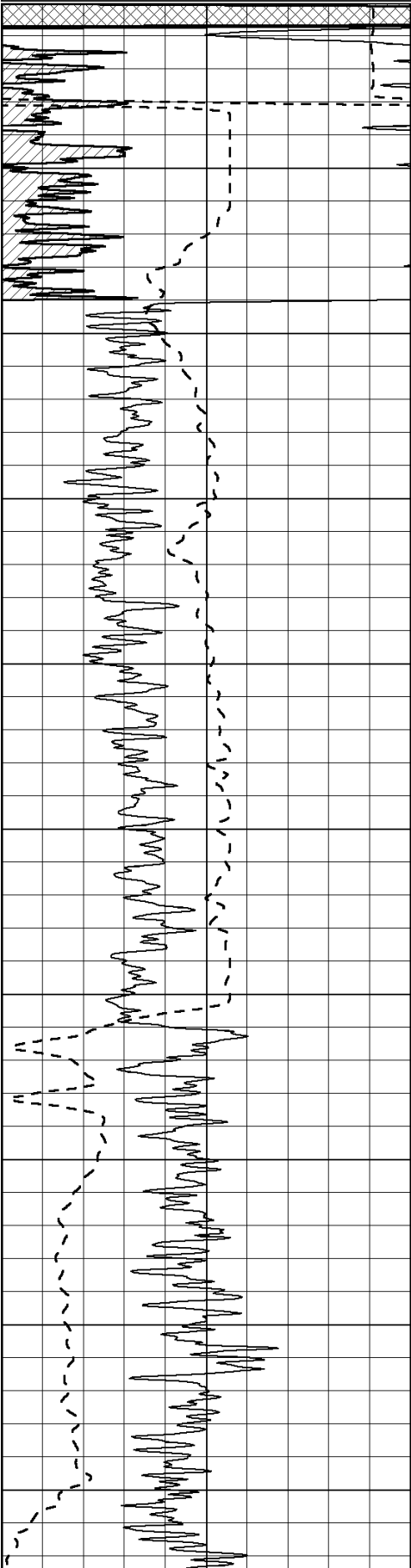
THANK YOU FOR USING SUPERIOR WELL SERVICES
HAYS, KS. 785-628-6395

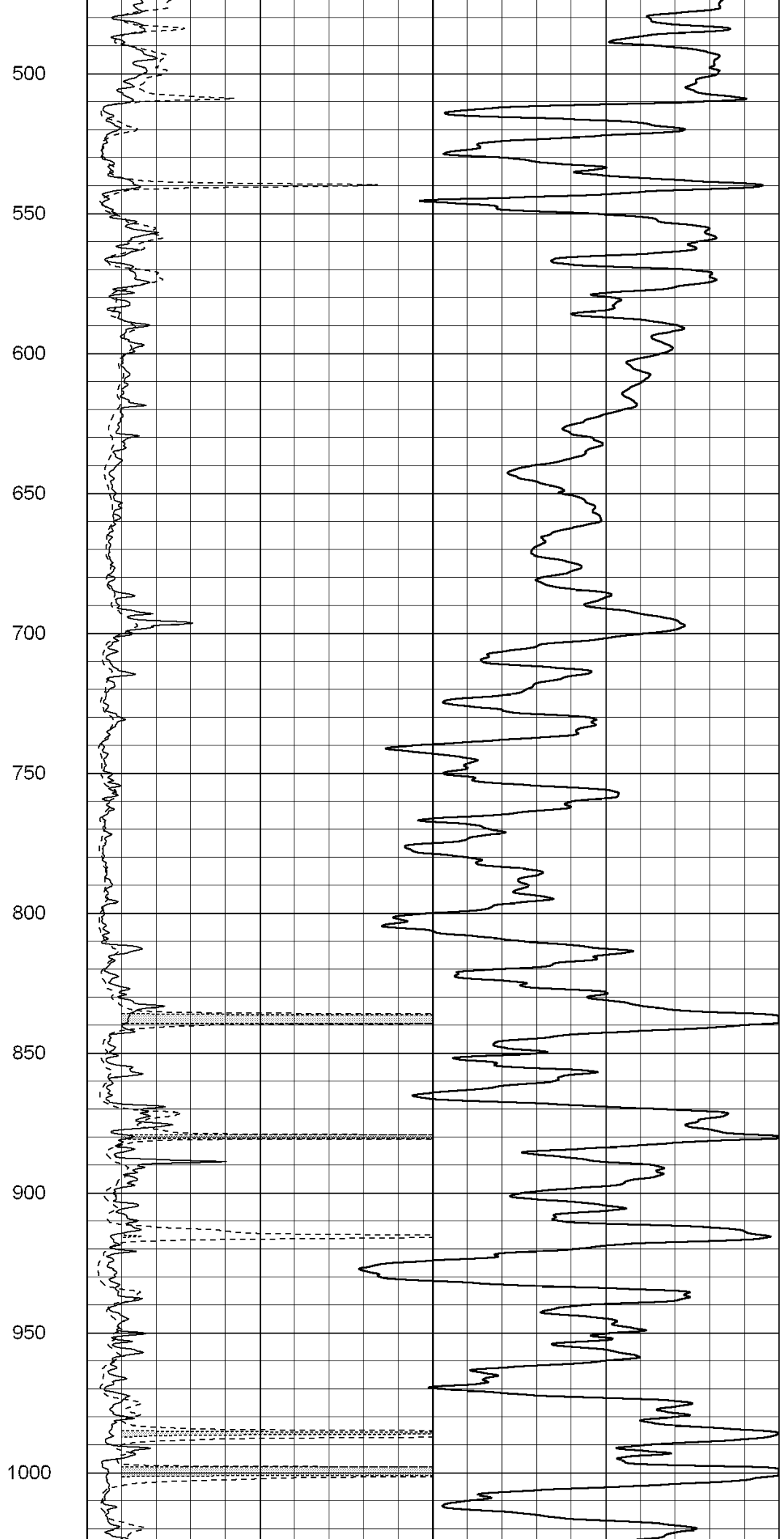
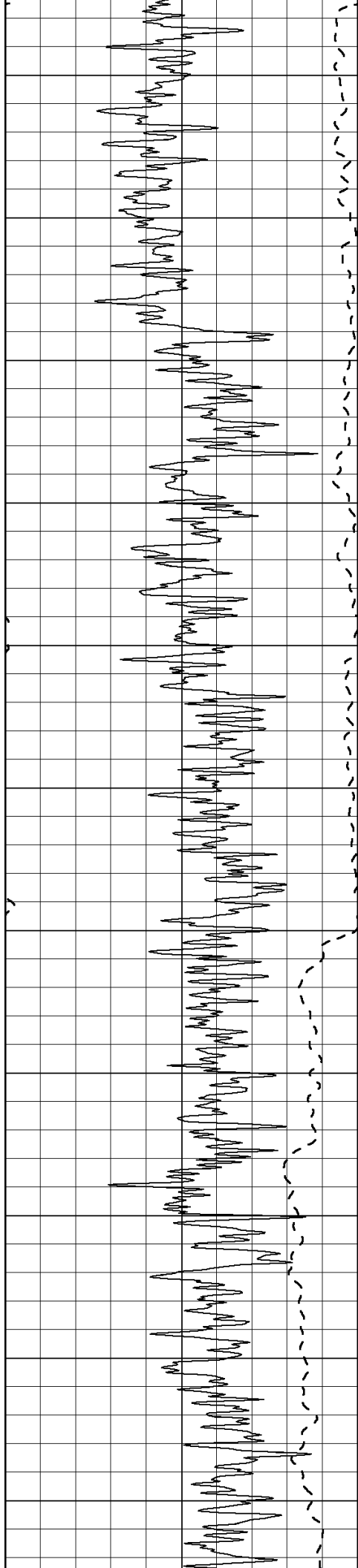
DIRECTIONS: NASHVILLE, KS - SOUTH 1 MILE TO CEMETARY
WEST 1 1/2 MILES - NORTH INTO

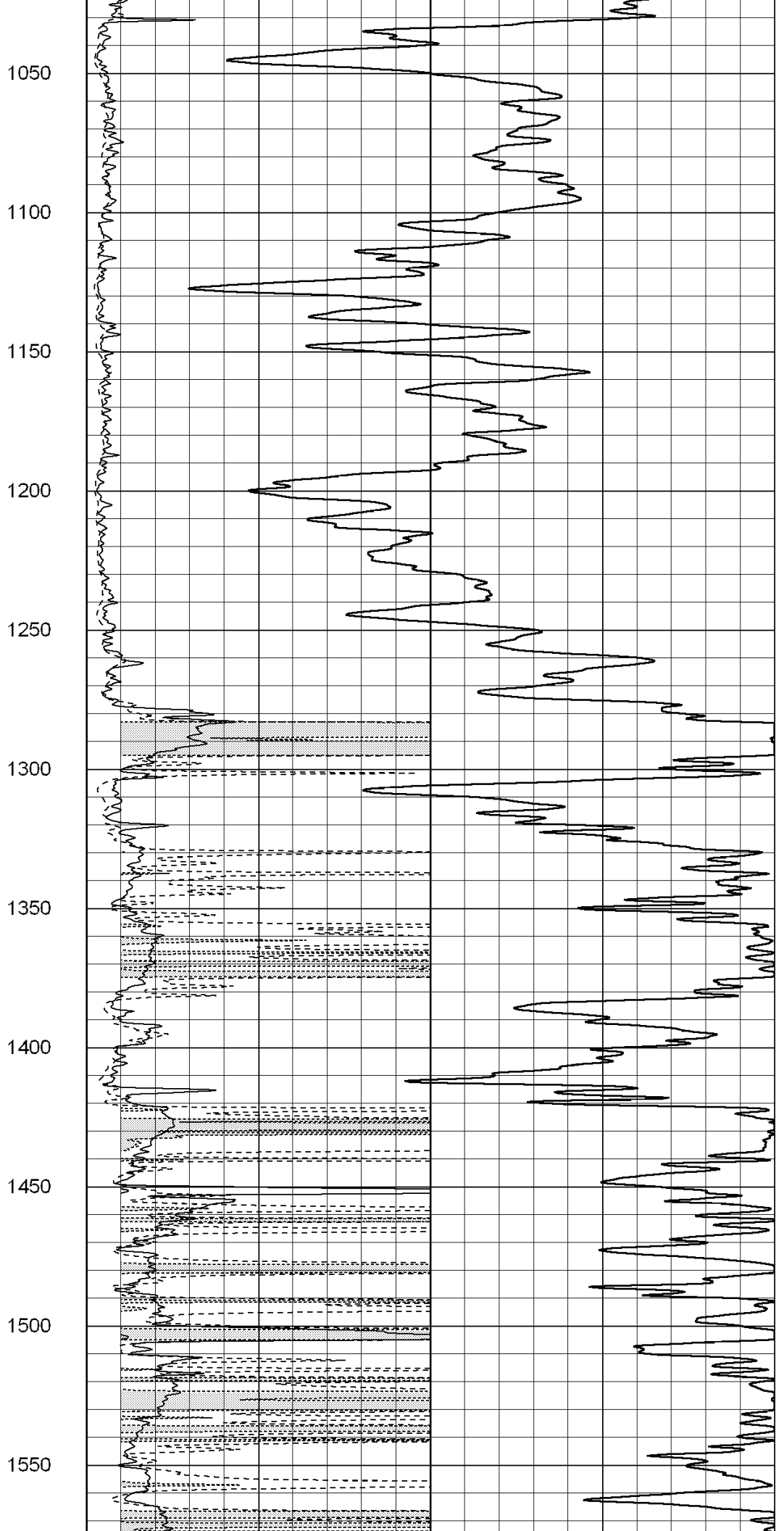
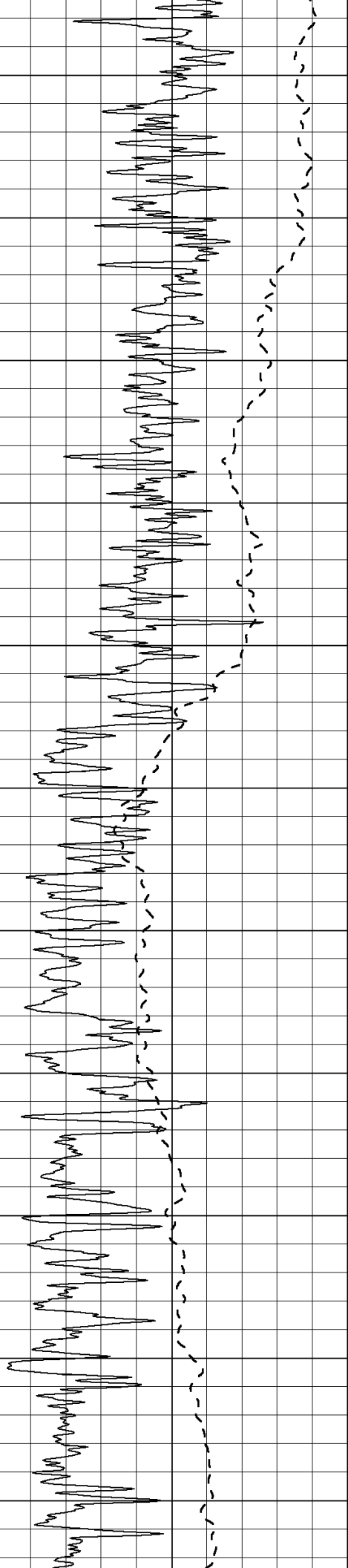
0	Gamma Ray (GAPI)	150
-100	SP (mV)	100

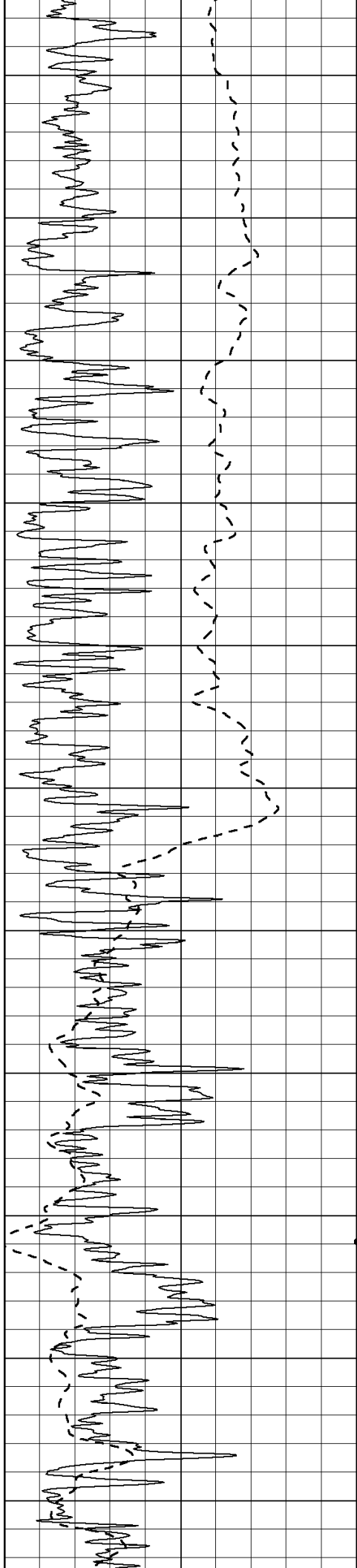
0	RLL3 (Ohm-m)	50
0	Deep Induction (Ohm-m)	50

1000	CILD (mmho/m)	0
50	RILD X10 (Ohm-m)	500
50	RLL3 X10 (Ohm-m)	500









1600

1650

1700

1750

1800

1850

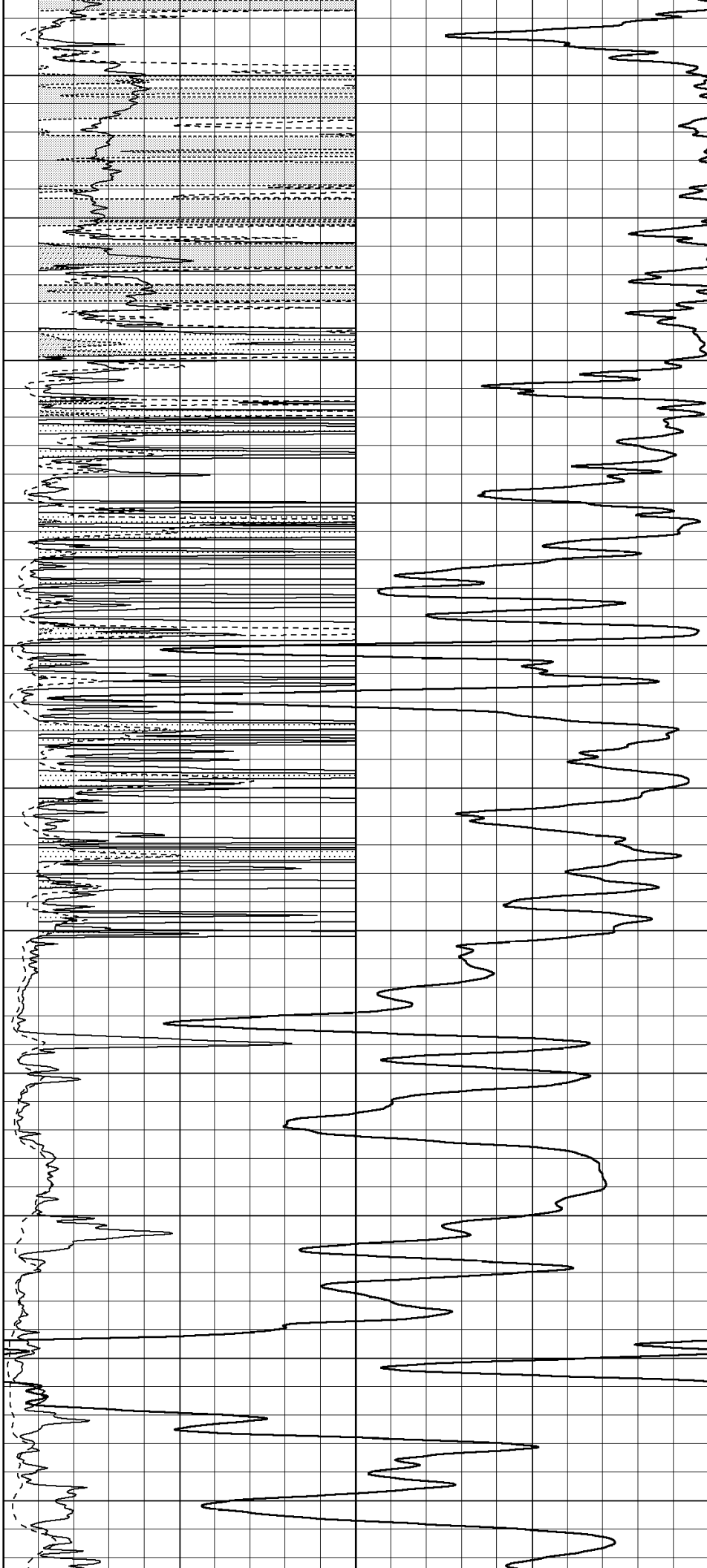
1900

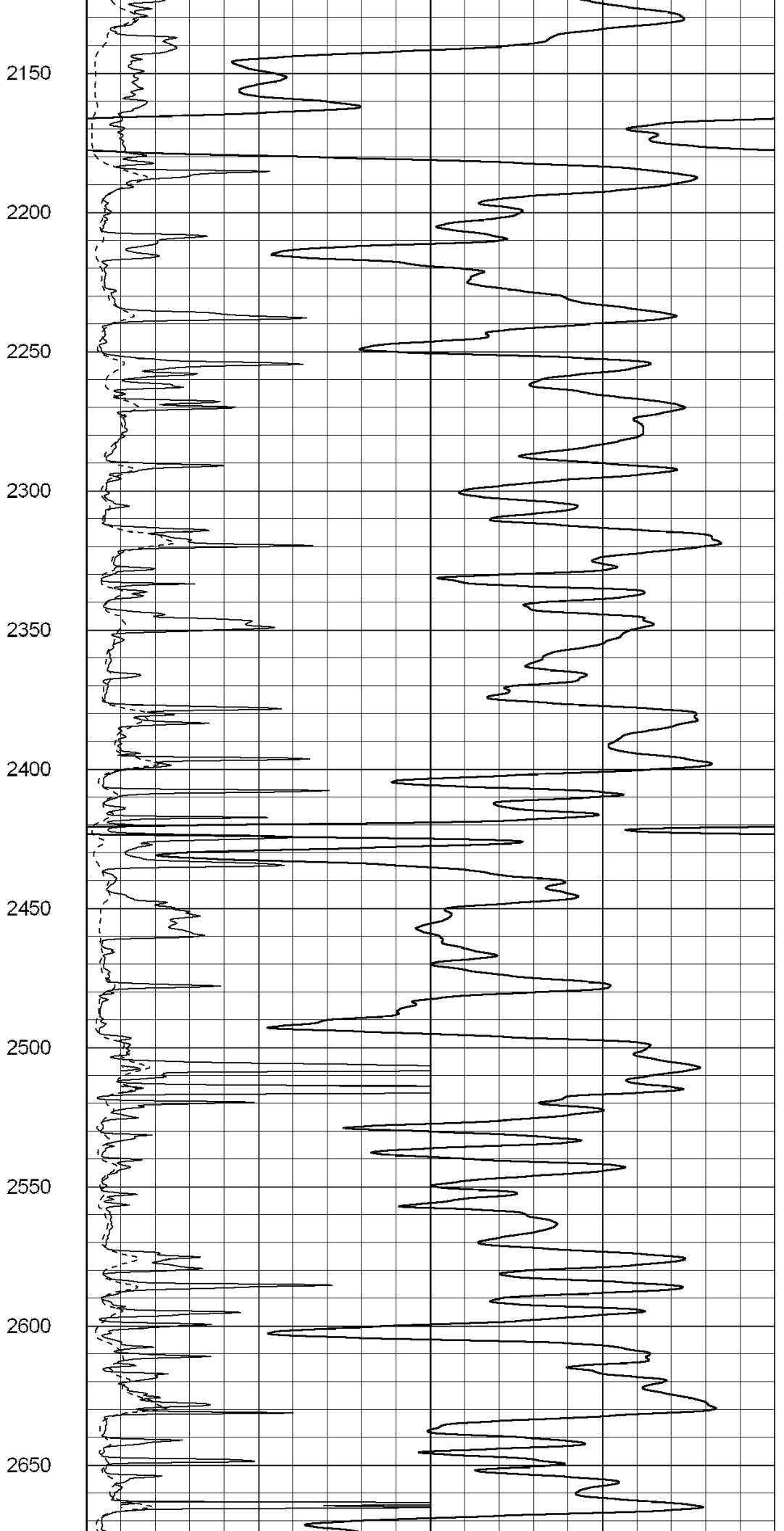
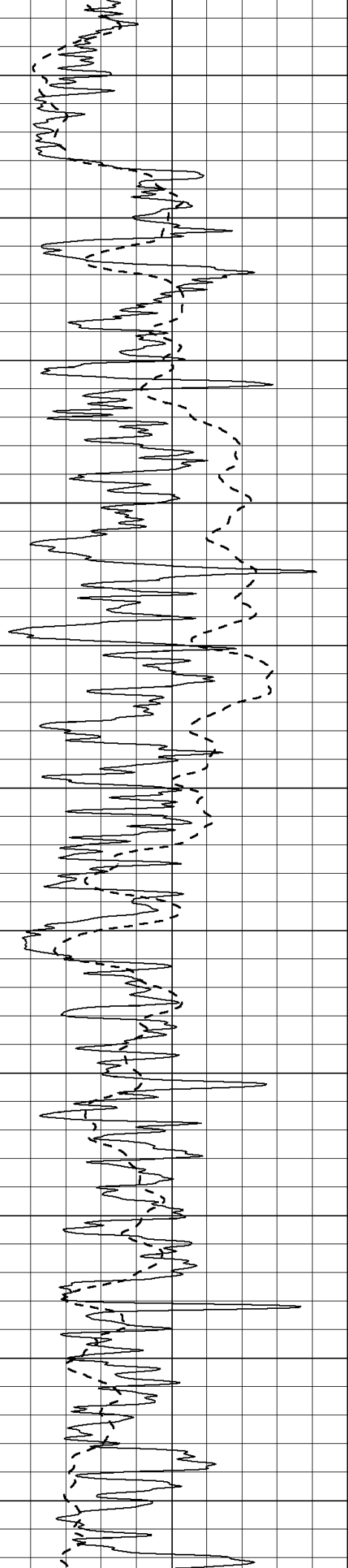
1950

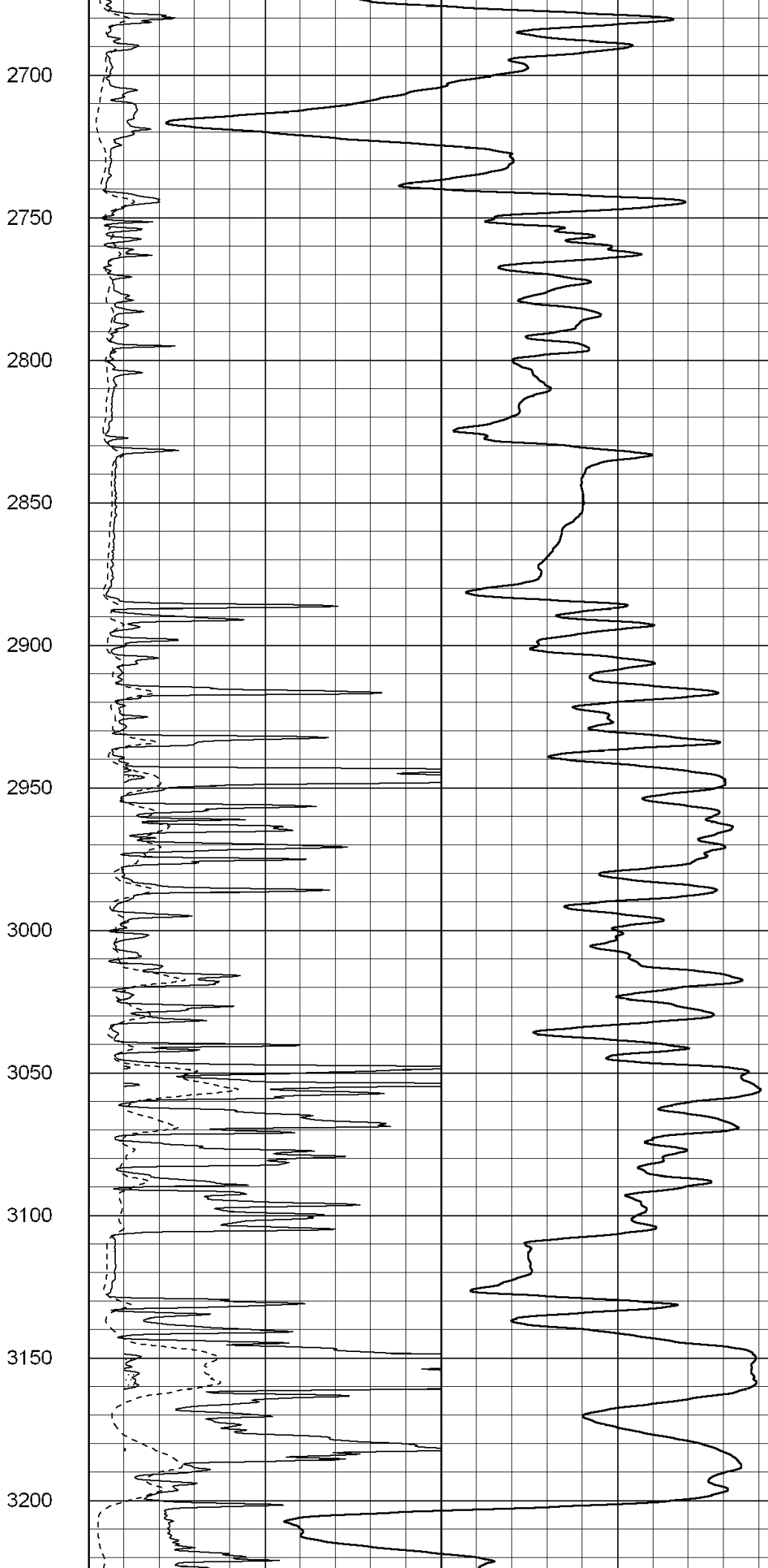
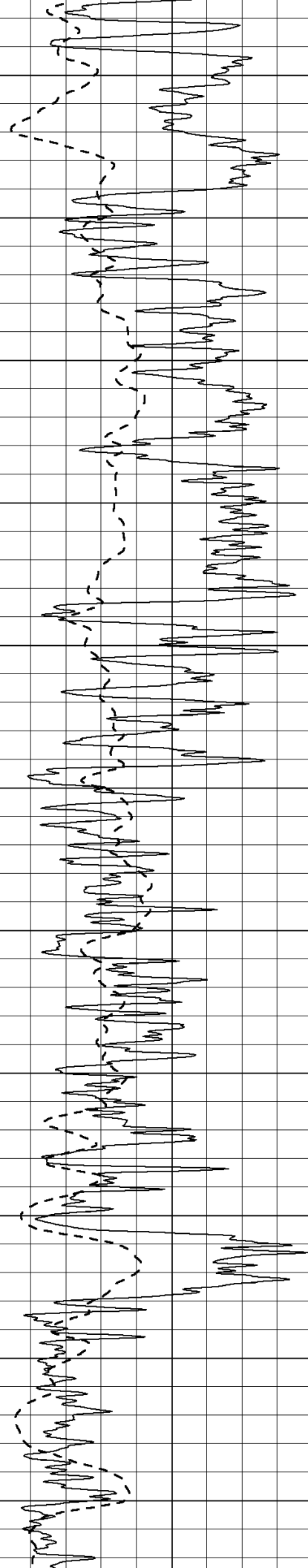
2000

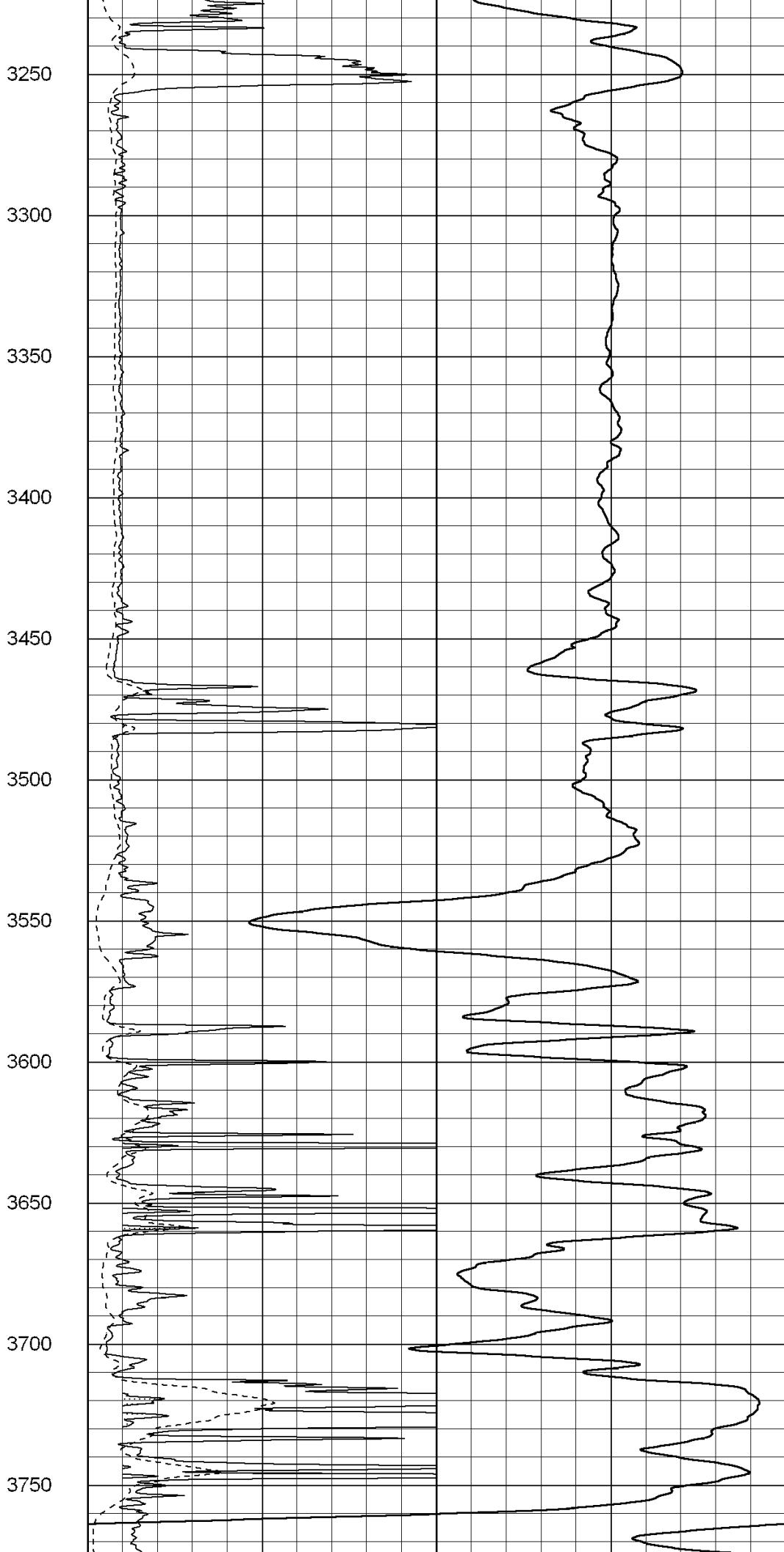
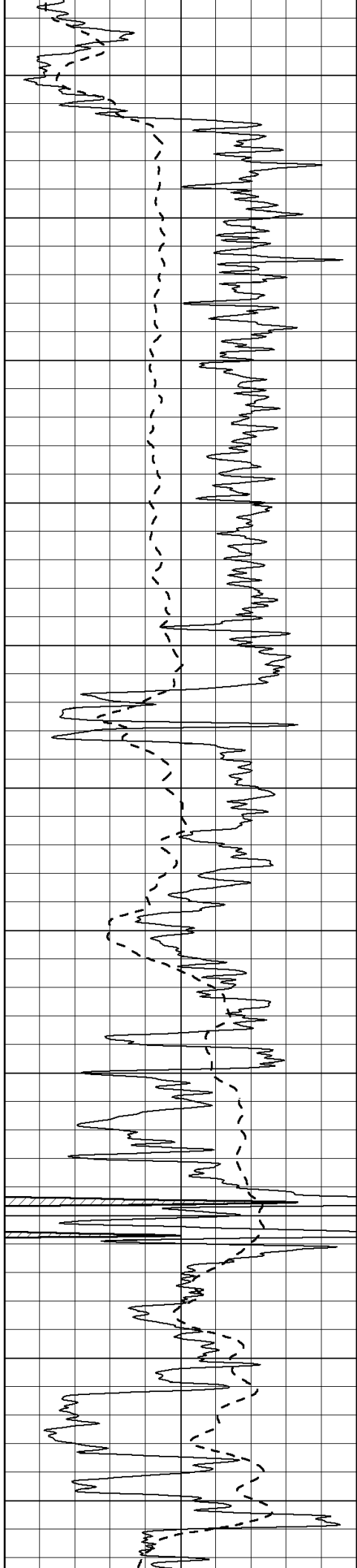
2050

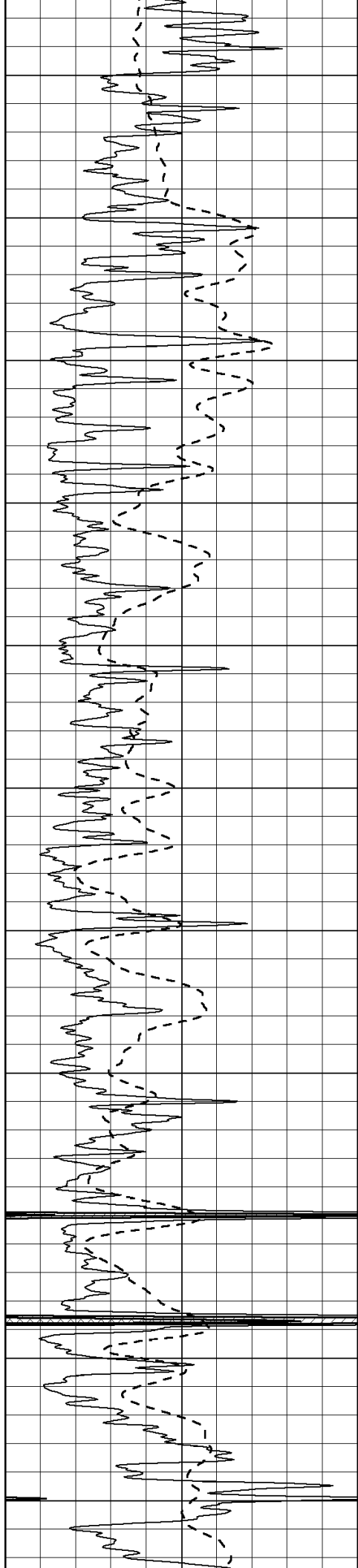
2100











3800

3850

3900

3950

4000

4050

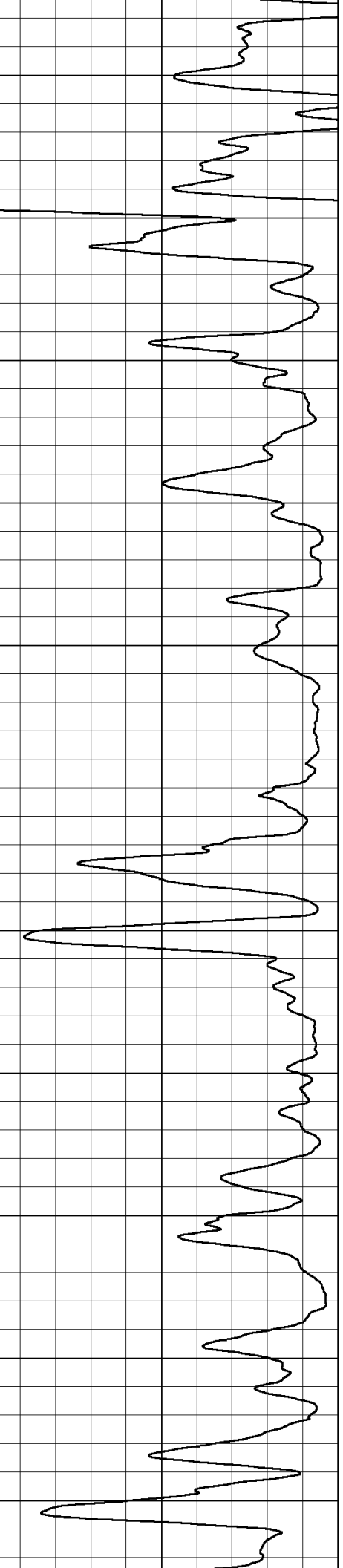
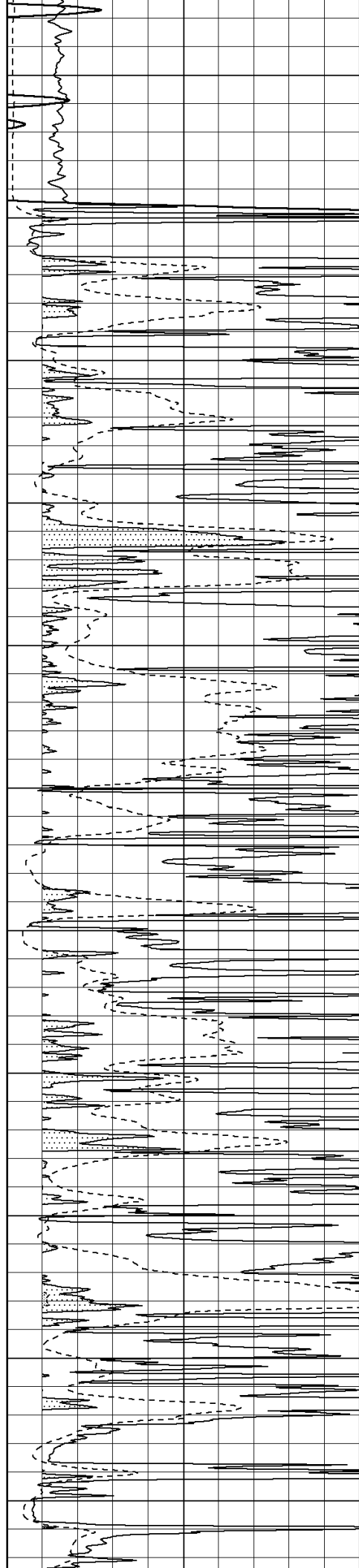
4100

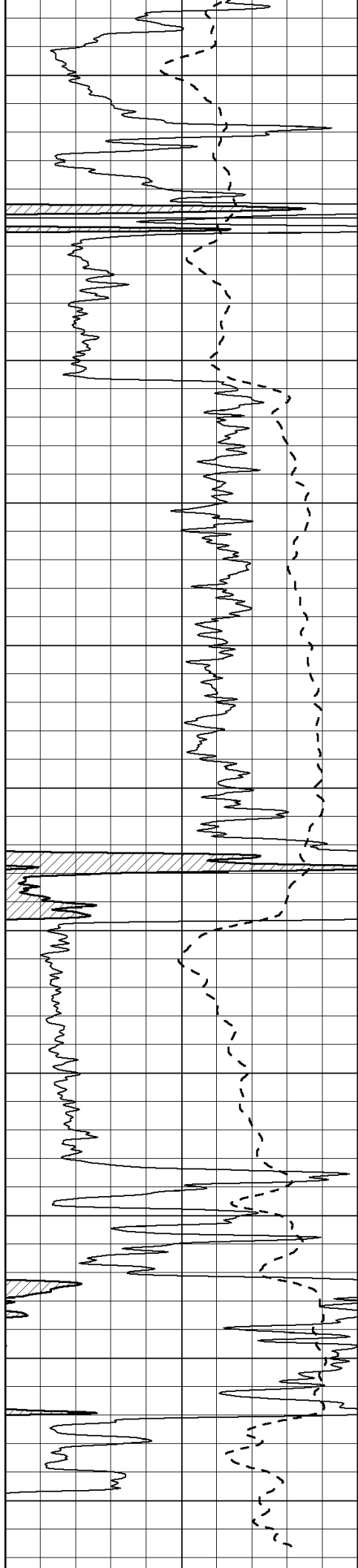
4150

4200

4250

4300





4350

4400

4450

4500

4550

4600

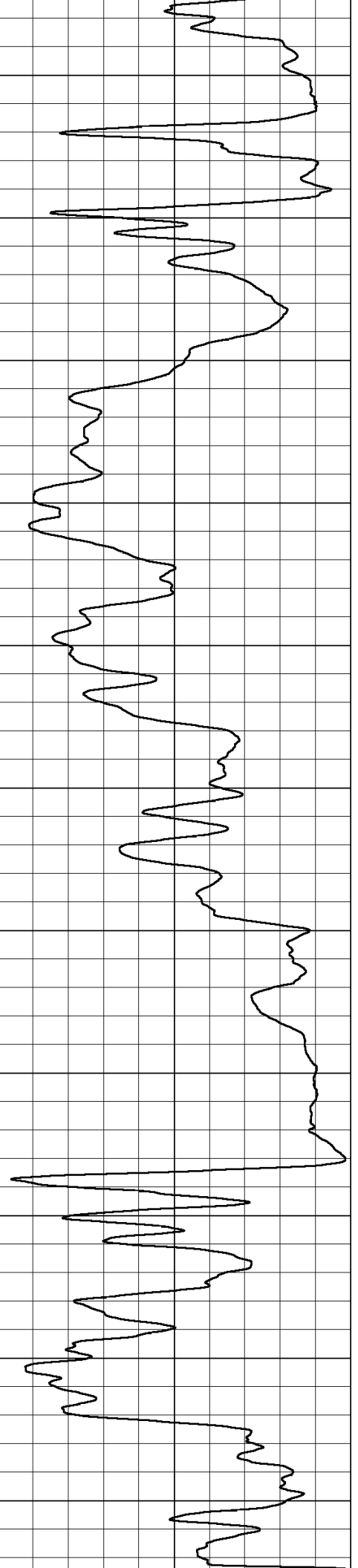
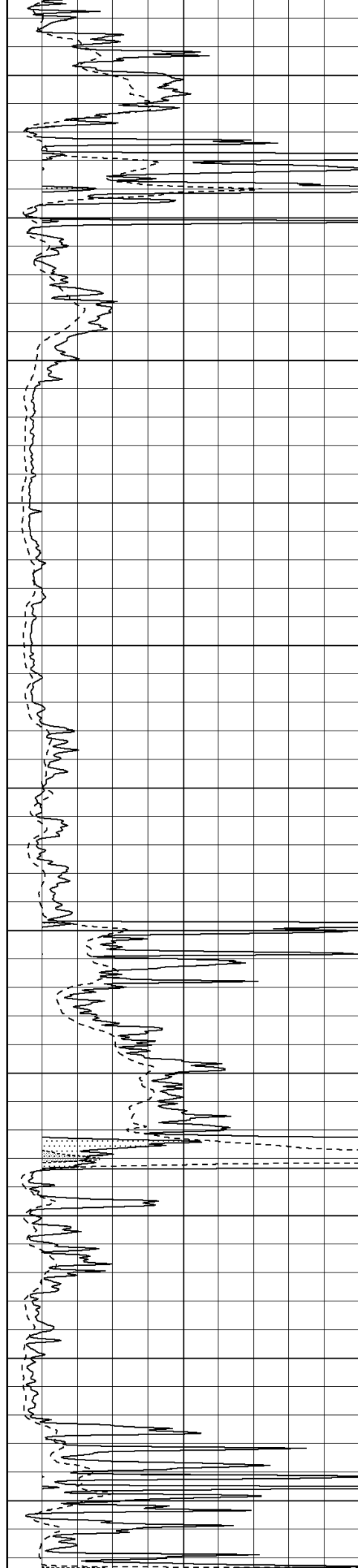
4650

4700

4750

4800

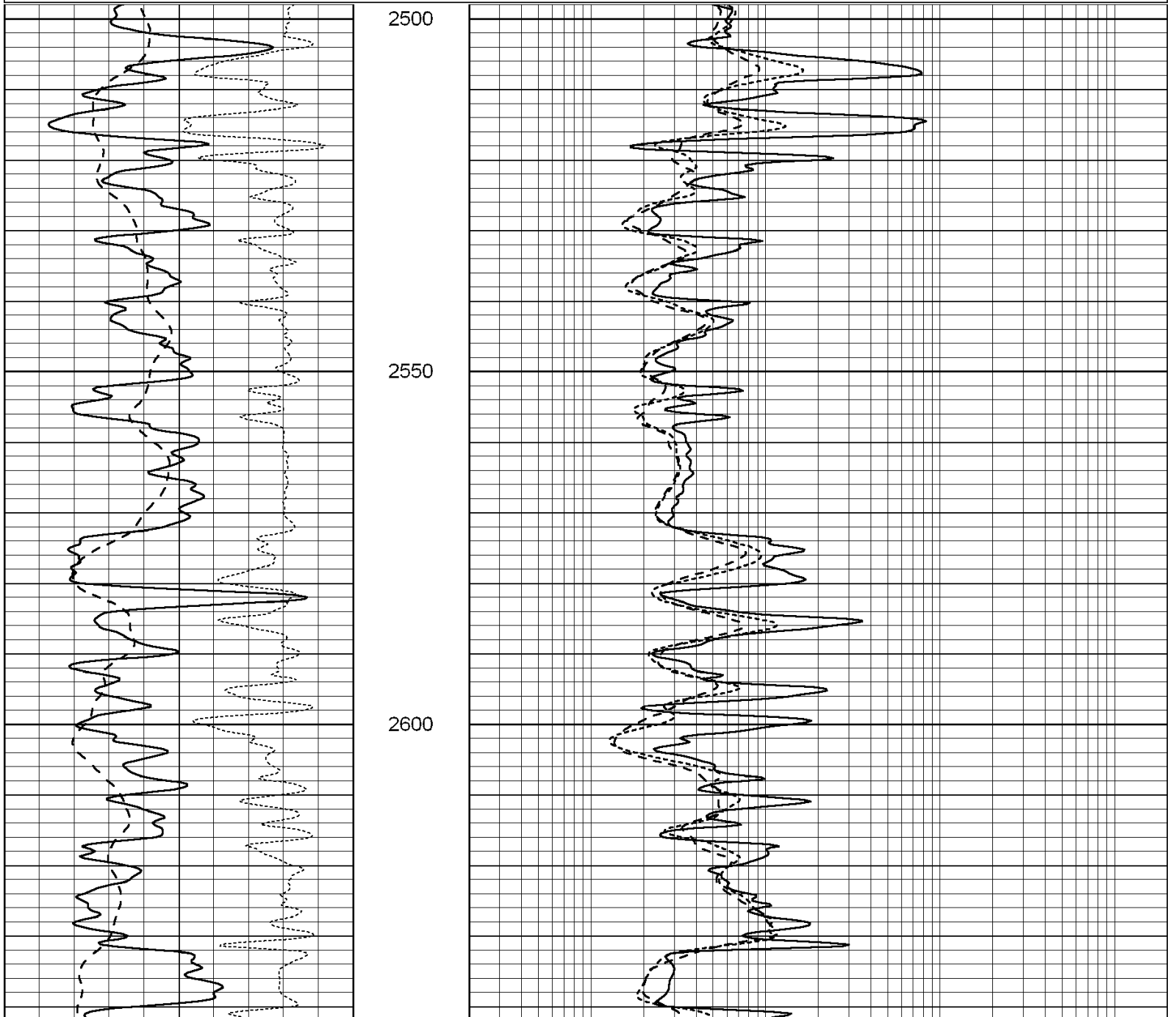
4850

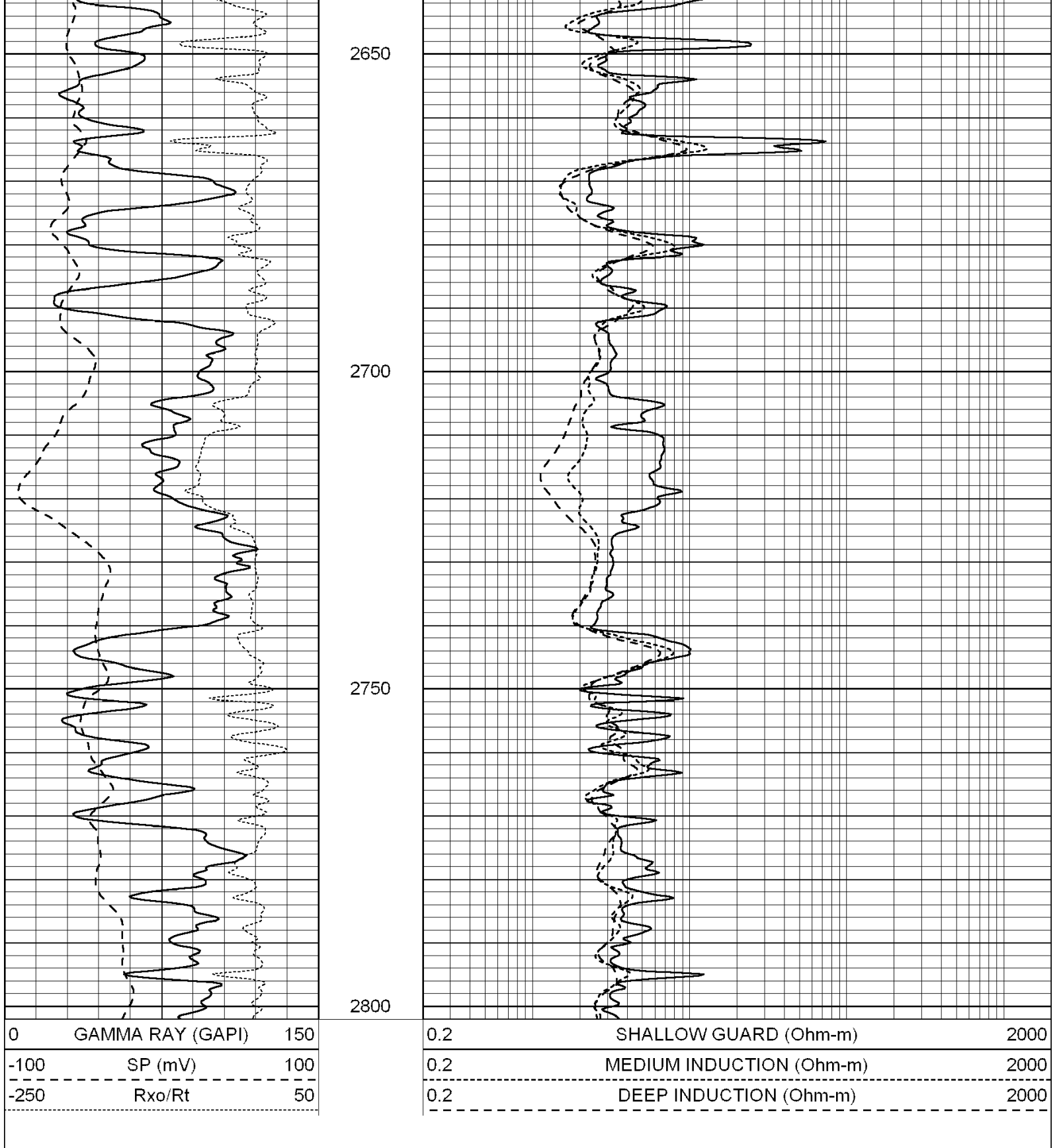


0	Gamma Ray (GAPI)	150	0	RLL3 (Ohm-m)	50
-100	SP (mV)	100	0	Deep Induction (Ohm-m)	50
-----			1000	CILD (mmho/m)	0
			50	RILD X10 (Ohm-m)	500
			50	RLL3 X10 (Ohm-m)	500

Database File: 004086ddn.db
 Dataset Pathname: pass3.3.1
 Presentation Format: _dil
 Dataset Creation: Fri Jul 31 16:53:38 2009
 Charted by: Depth in Feet scaled 1:240

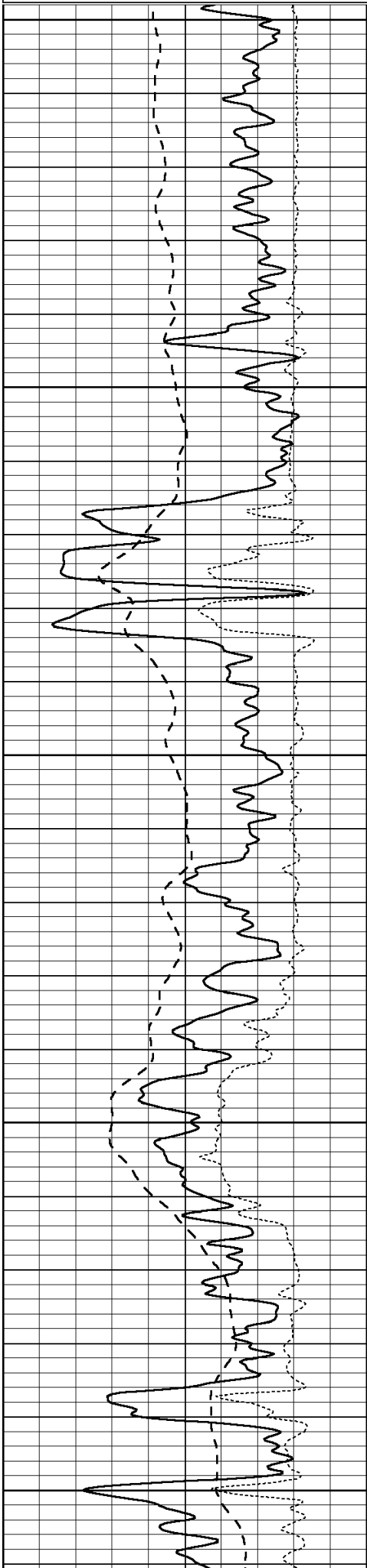
0	GAMMA RAY (GAPI)	150	0.2	SHALLOW GUARD (Ohm-m)	2000
-100	SP (mV)	100	0.2	MEDIUM INDUCTION (Ohm-m)	2000
-250	Rxo/Rt	50	0.2	DEEP INDUCTION (Ohm-m)	2000
-----			-----		





Database File: 004086ddn.db
 Dataset Pathname: pass3.1.1
 Presentation Format: _dil
 Dataset Creation: Fri Jul 31 15:44:58 2009
 Charted by: Depth in Feet scaled 1:240

0	GAMMA RAY (GAPI)	150	0.2	SHALLOW GUARD (Ohm-m)	2000
-100	SP (mV)	100	0.2	MEDIUM INDUCTION (Ohm-m)	2000
-250	Rxo/Rt	50	0.2	DEEP INDUCTION (Ohm-m)	2000



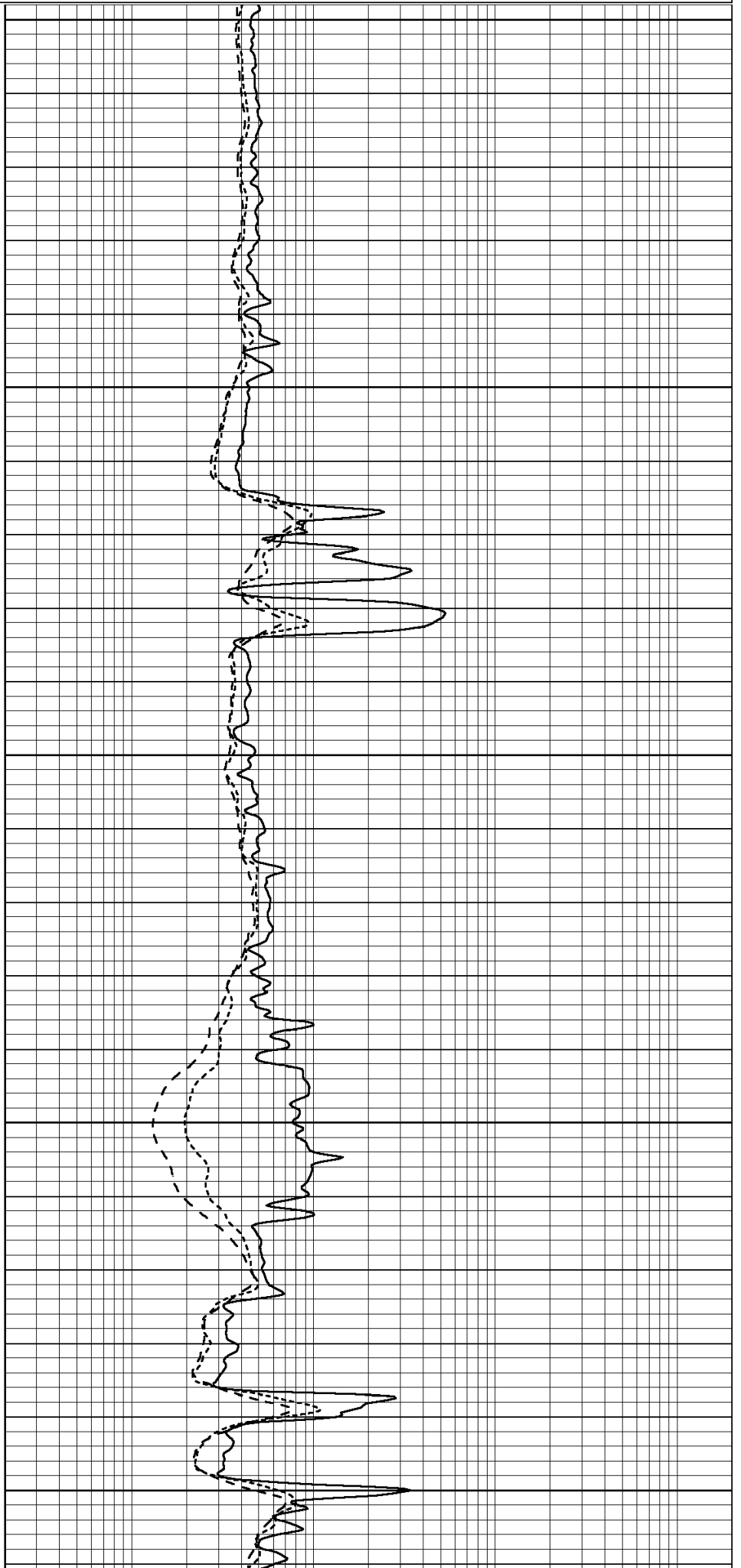
3400

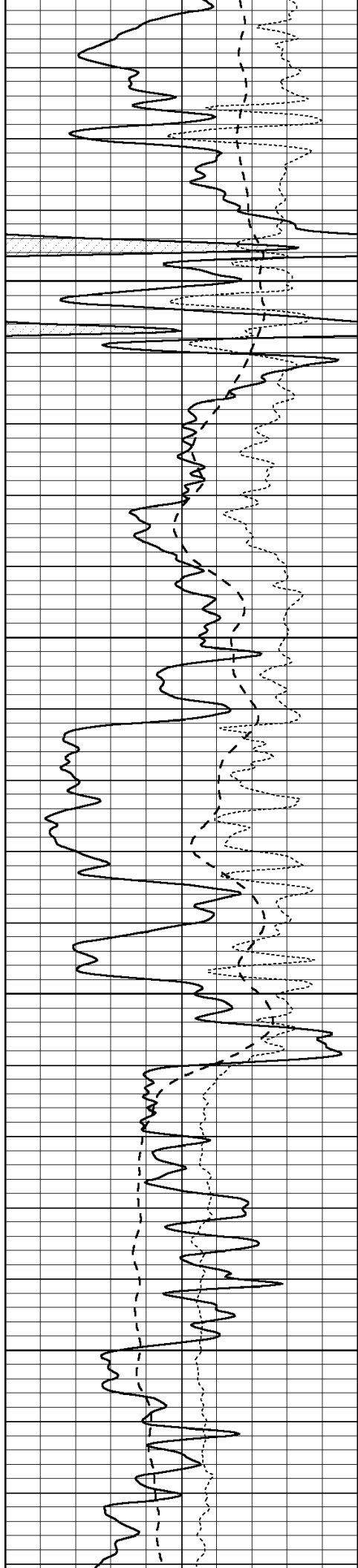
3450

3500

3550

3600



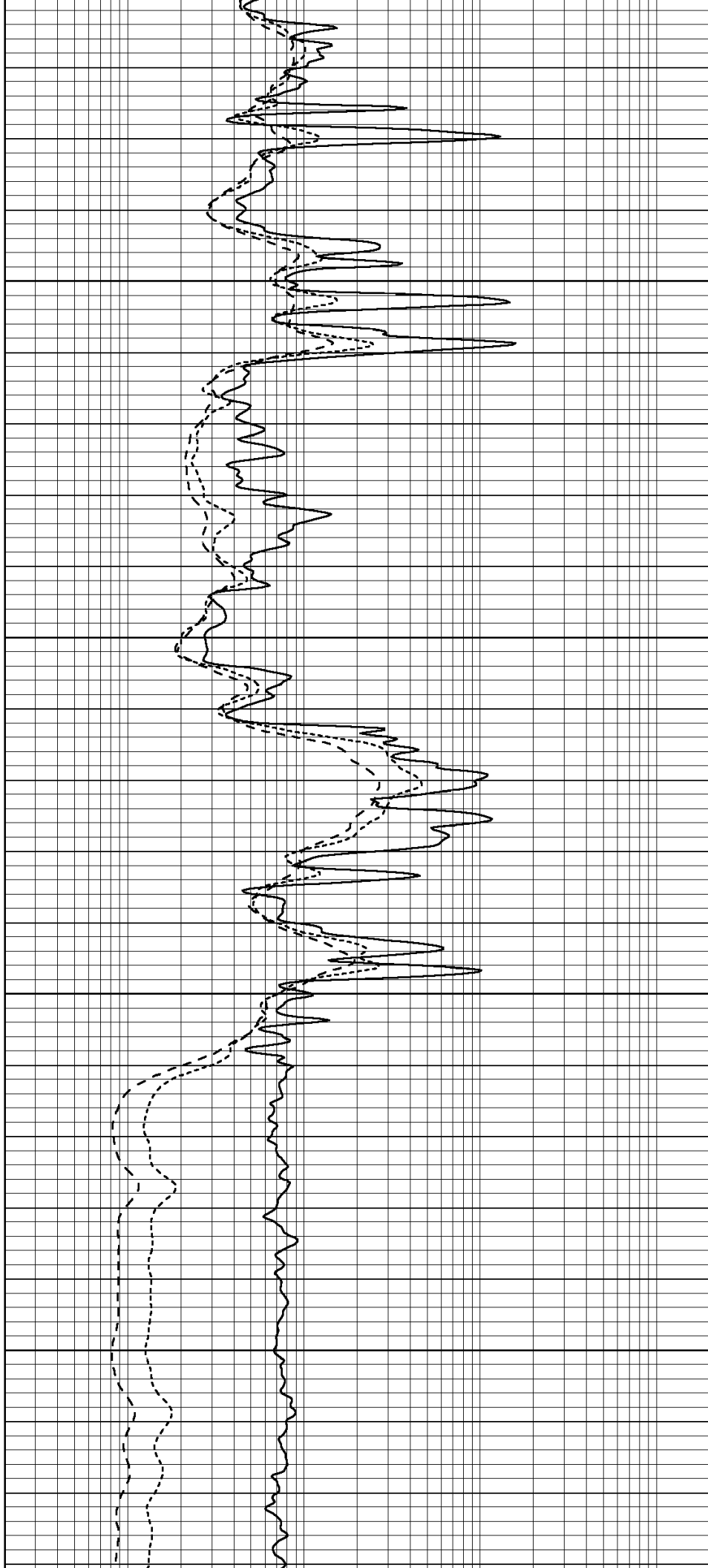


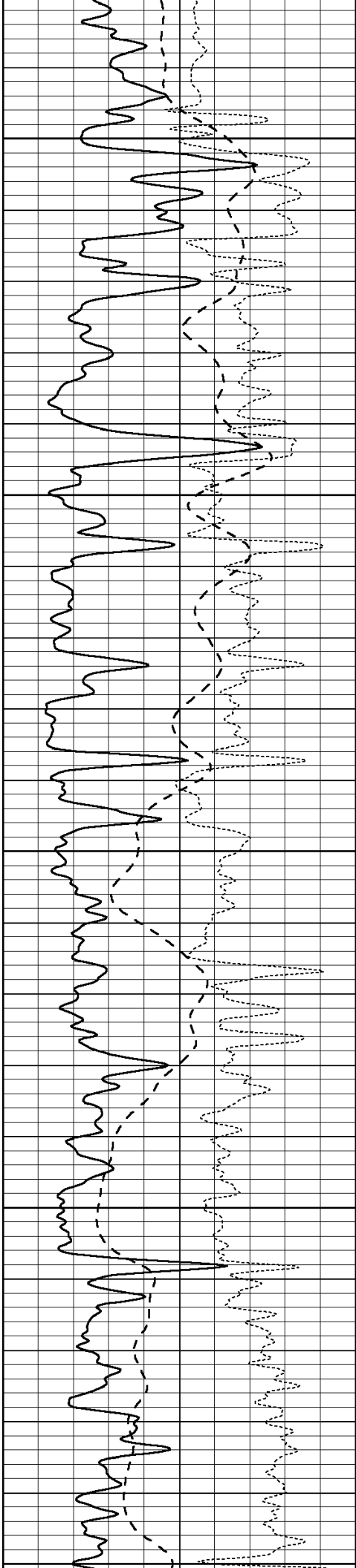
3650

3700

3750

3800





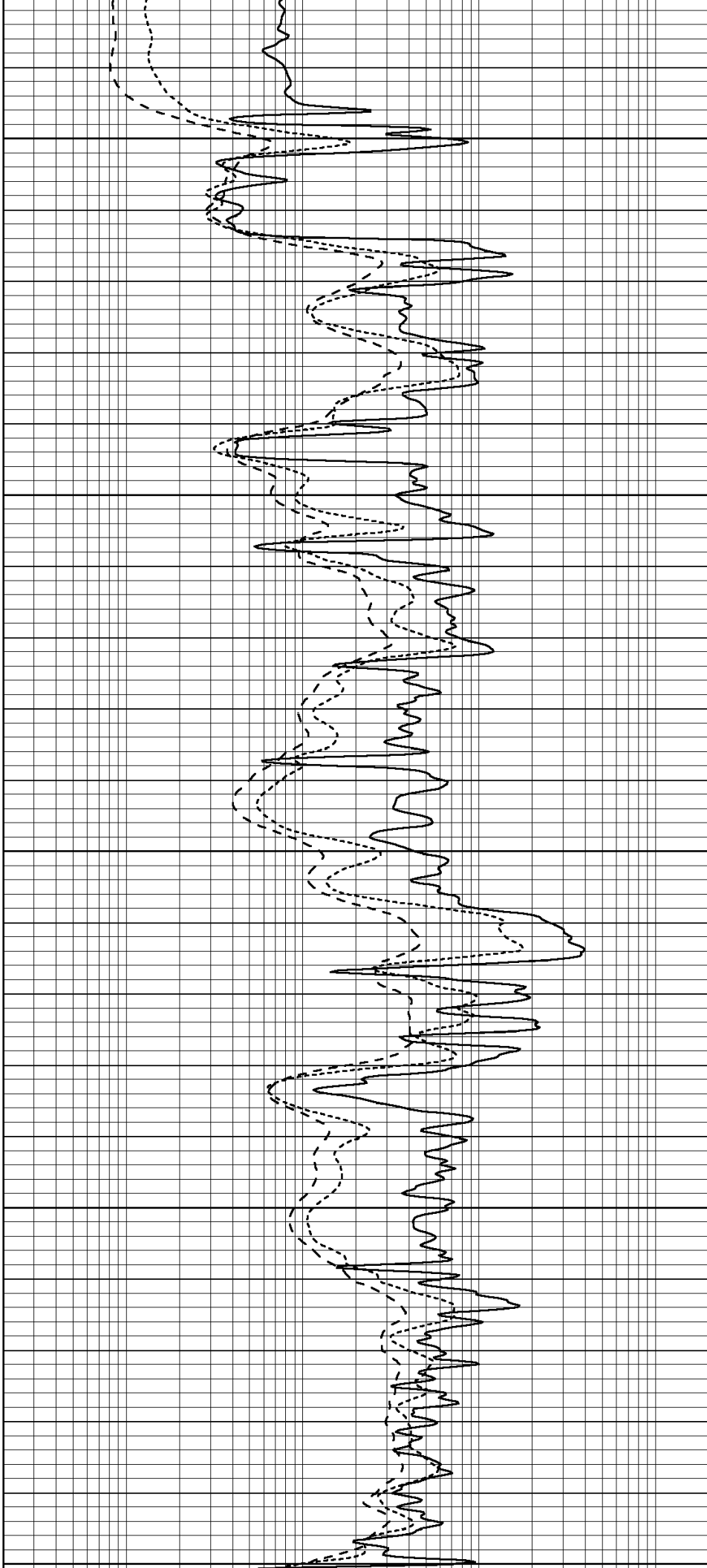
3850

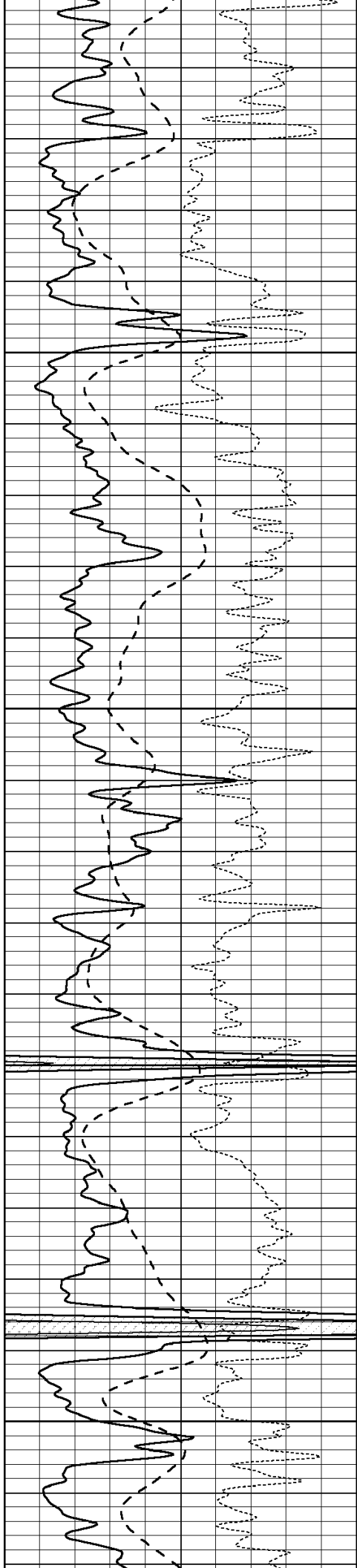
3900

3950

4000

4050





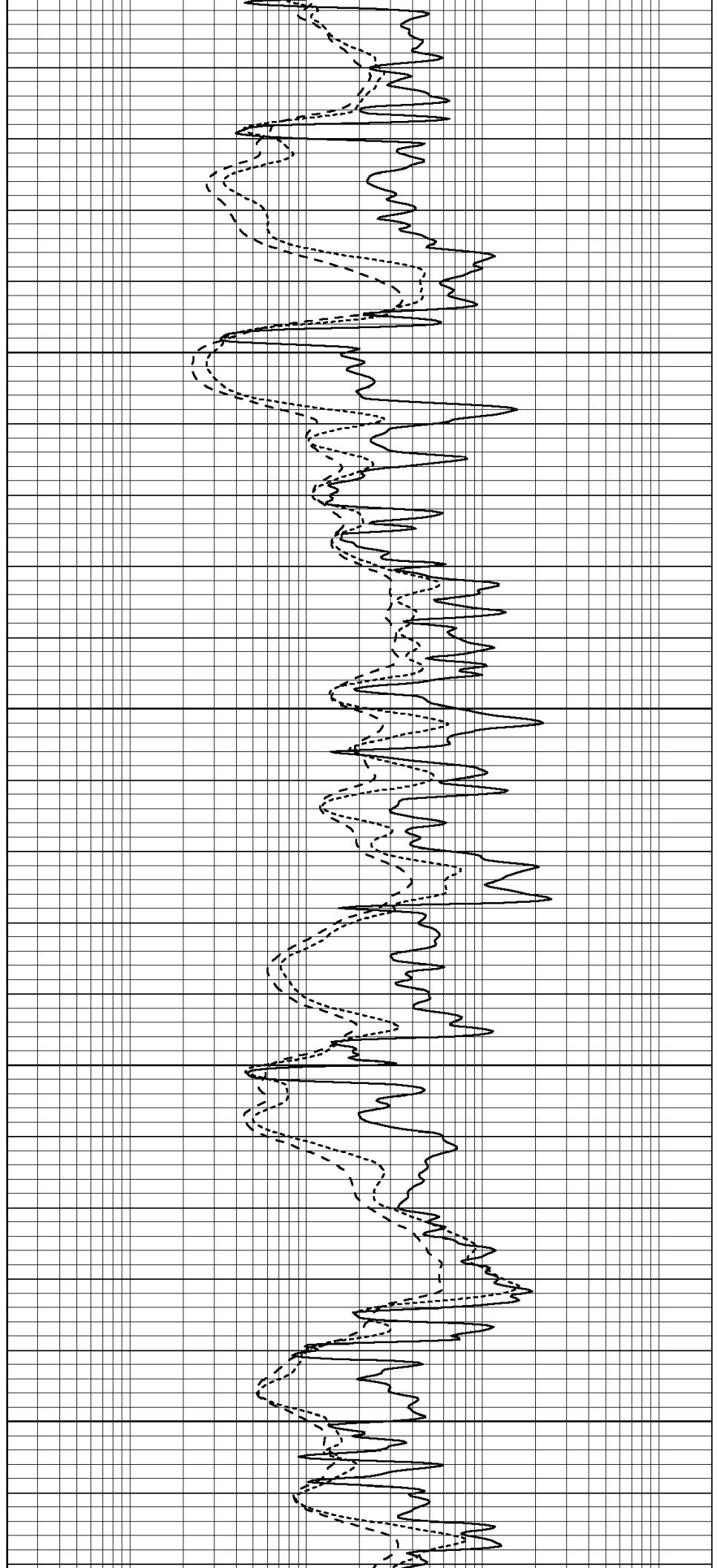
1333

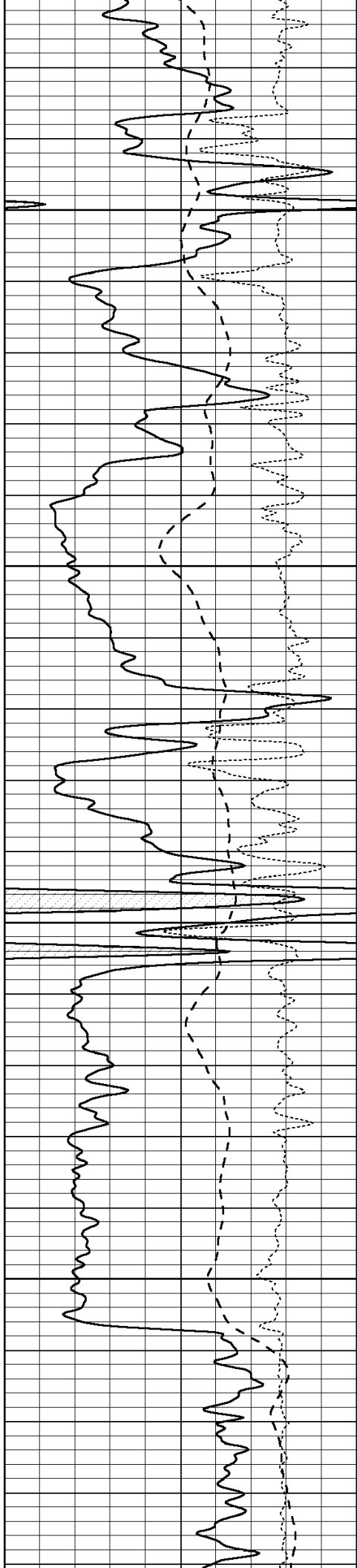
4100

4150

4200

4250



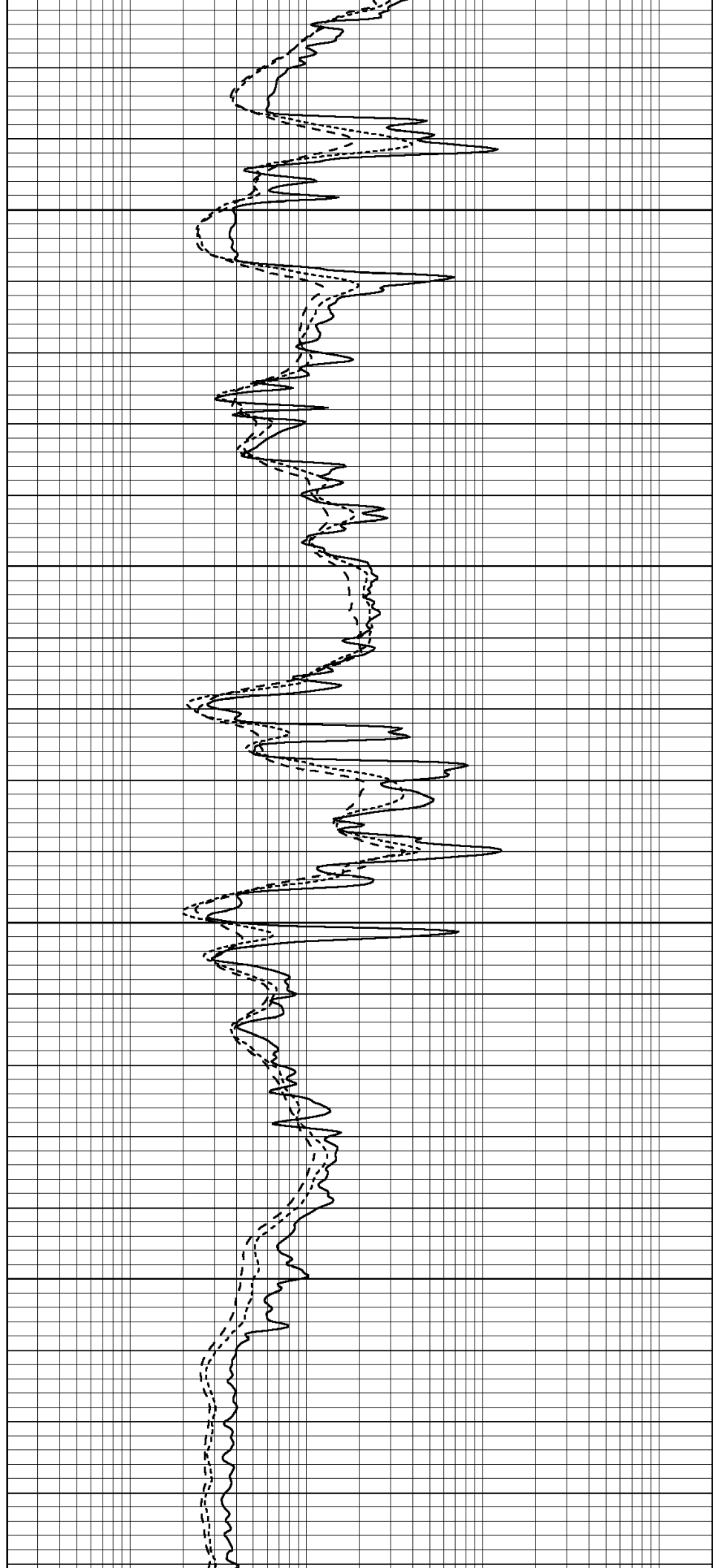


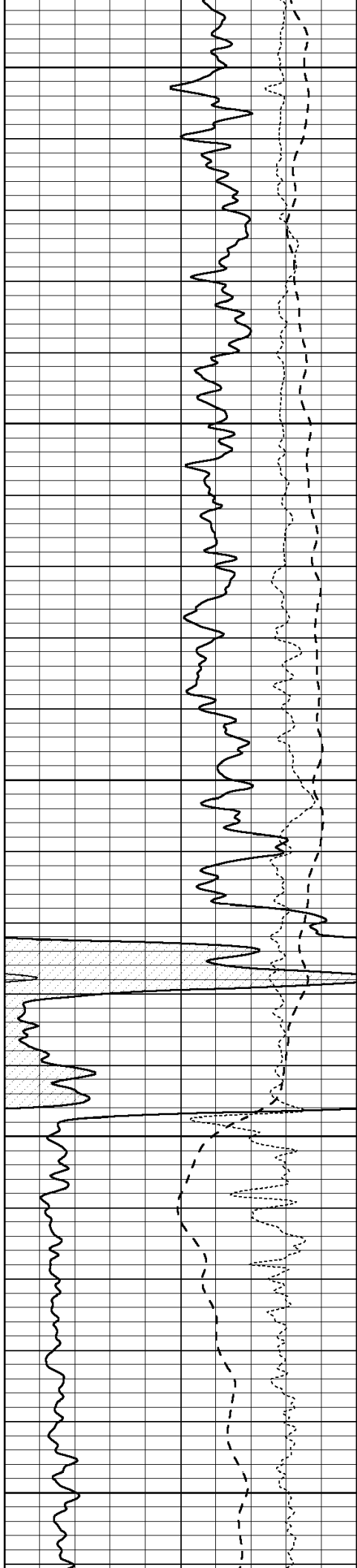
4300

4350

4400

4450





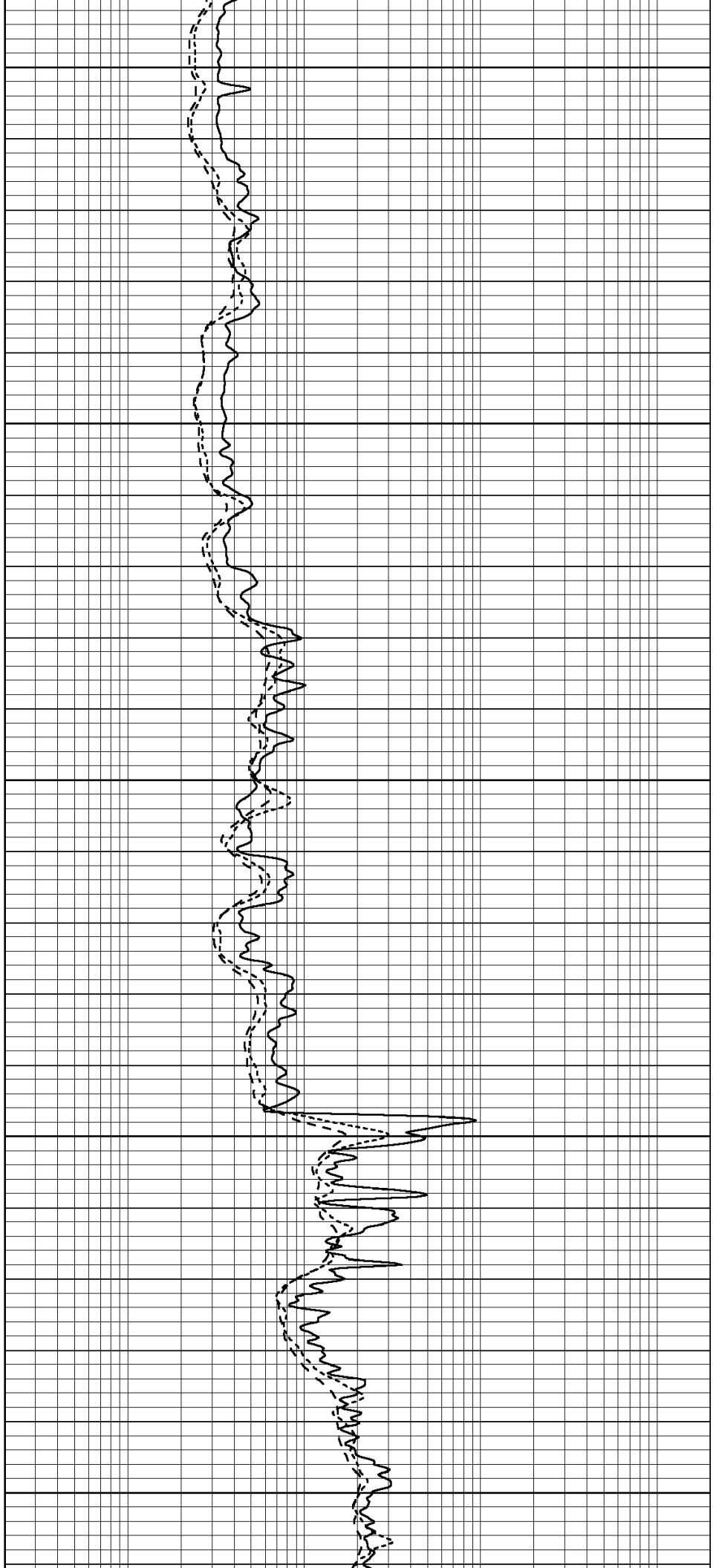
4500

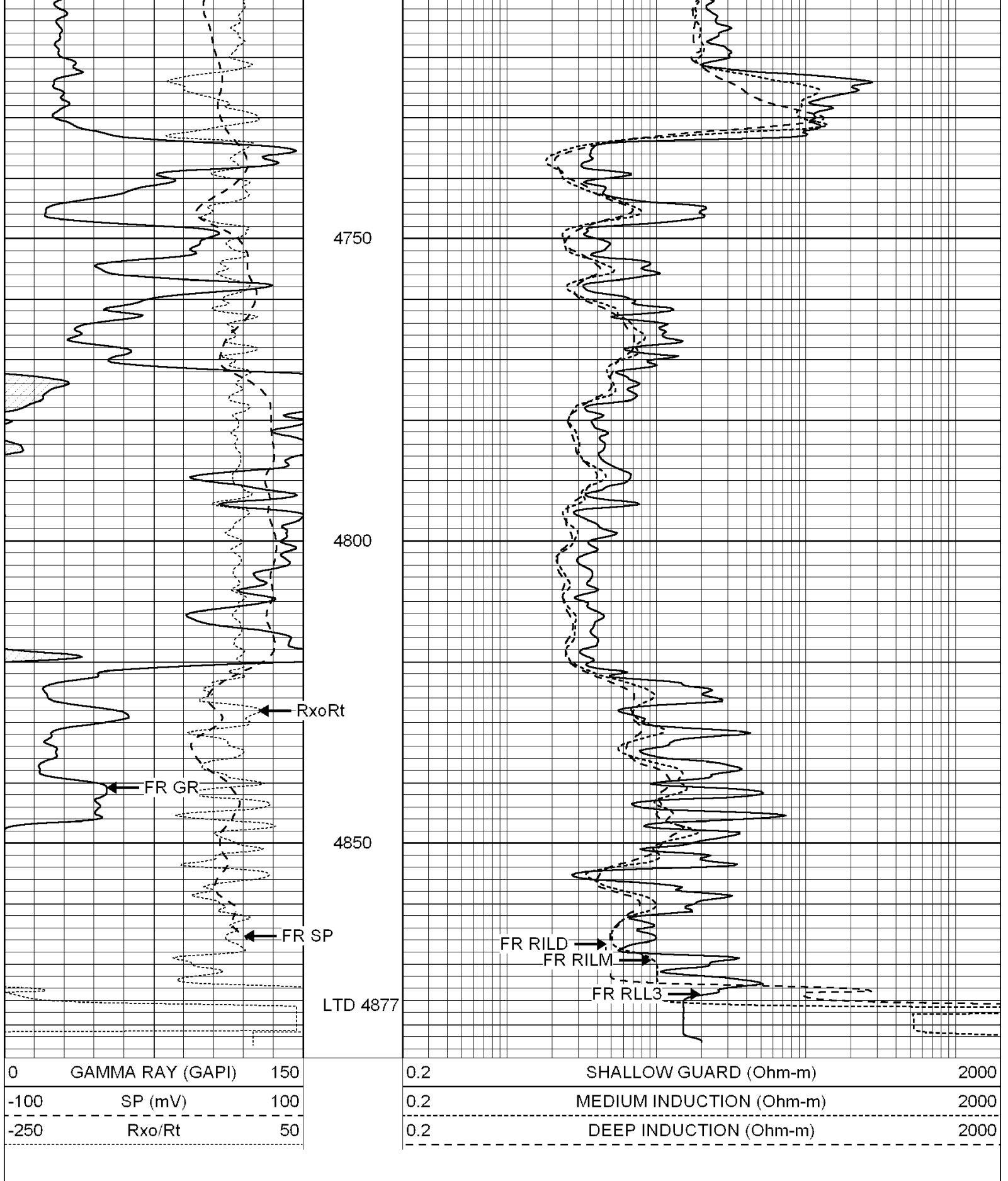
4550

4600

4650

4700





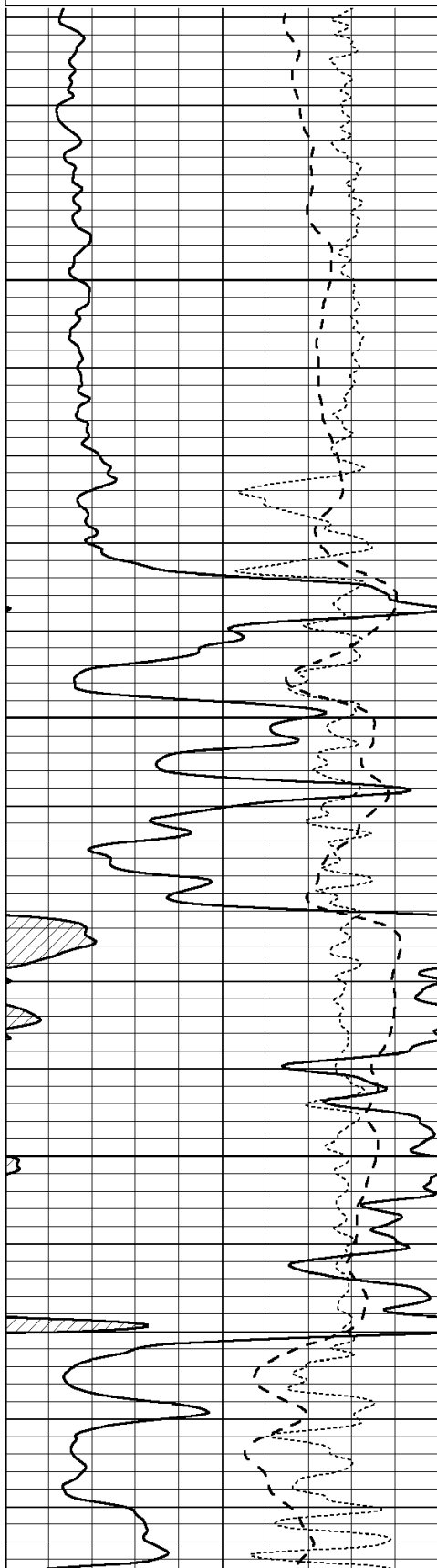
SUPERIOR
Hays,
Kansas

REPEAT SECTION

Database File: 004086ddn.db
 Dataset Pathname: pass2.1
 Presentation Format: _dil
 Dataset Creation: Fri Jul 31 14:52:58 2009 by Calc Open-Cased 090629
 Charted by: Depth in Feet scaled 1:240

0	GAMMA RAY (GAPI)	150
-100	SP (mV)	100
-250	Rxo/Rt	50

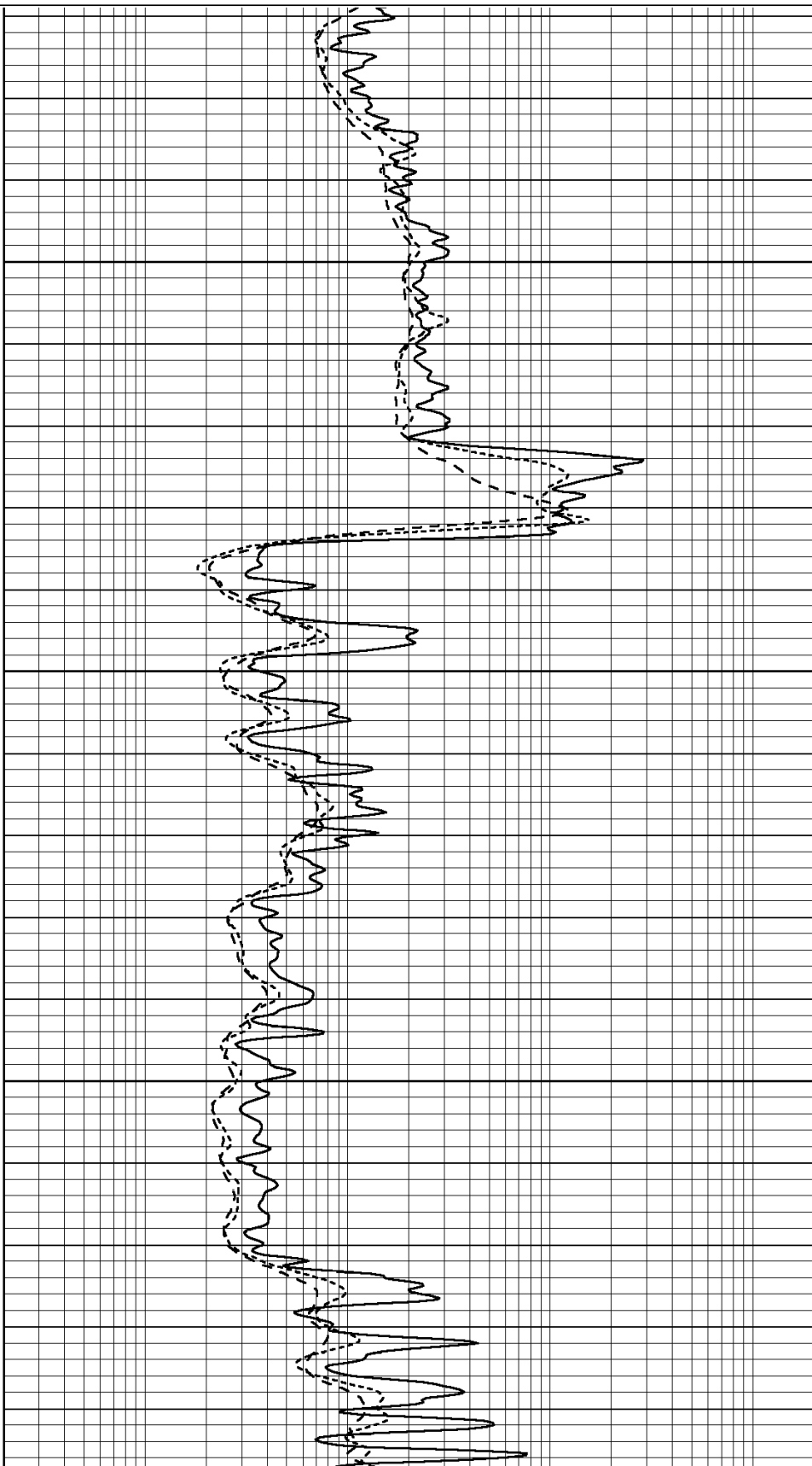
0.2	SHALLOW GUARD (Ohm-m)	2000
0.2	MEDIUM INDUCTION (Ohm-m)	2000
0.2	DEEP INDUCTION (Ohm-m)	2000

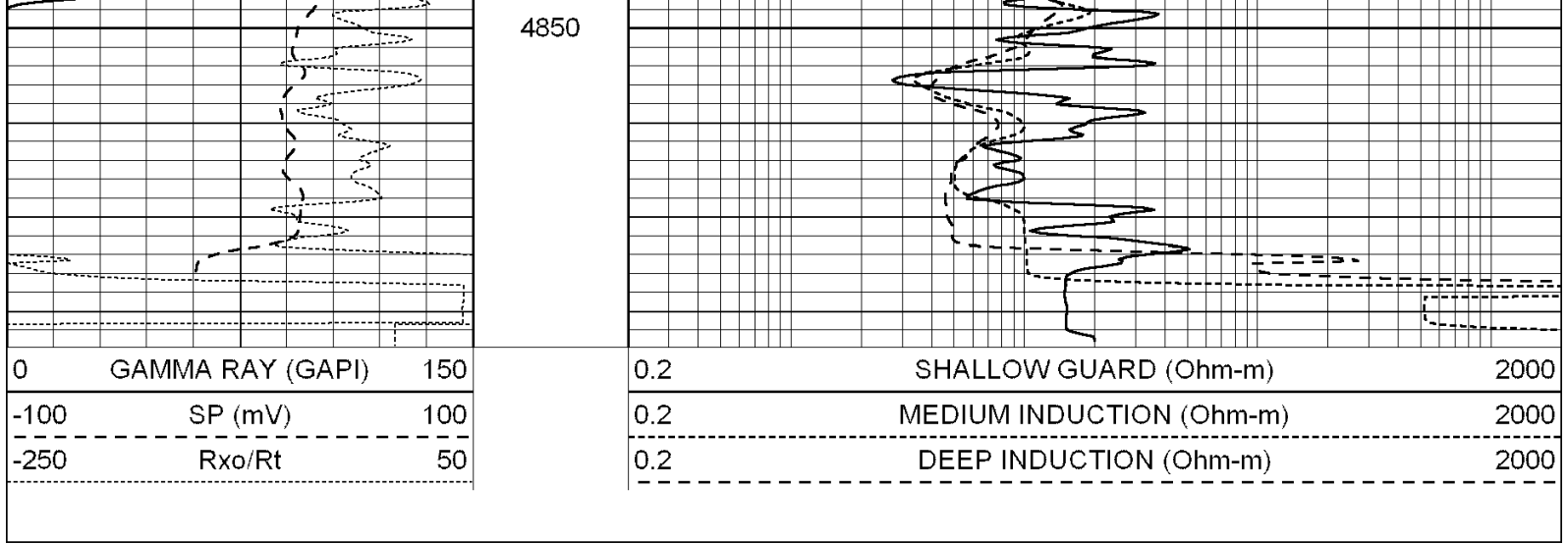


4700

4750

4800





Calibration Report

Database File: 004086ddn.db
 Dataset Pathname: pass3.3.1
 Dataset Creation: Fri Jul 31 16:53:38 2009

Dual Induction Calibration Report

Serial-Model: PROBE8-DILG
 Surface Cal Performed: Fri Aug 01 06:33:19 2008
 Downhole Cal Performed: Mon Jul 28 11:08:27 2008
 After Survey Verification Performed: Mon Jul 28 11:08:27 2008

Surface Calibration

Loop:	Readings				References			Results	
	Air	Loop	V		Air	Loop	mmho/m	m	b
Deep	0.015	0.648	V	0.000	400.000	mmho/m	632.616	-9.730	
Medium	0.029	0.796	V	0.000	464.000	mmho/m	605.049	-17.680	
Internal:	Zero	Cal		Zero	Cal		m	b	
Deep	0.017	0.657	V	0.000	400.000	mmho/m	625.153	-10.619	
Medium	0.016	0.757	V	0.000	464.000	mmho/m	625.992	-9.739	

Downhole Calibration

	Readings				References			Results	
	Zero	Cal	V		Zero	Cal	mmho/m	m'	b'
Deep	0.000	0.000	mmho/m	2.011	405.777	mmho/m	1.000	0.000	
Medium	0.000	0.000	mmho/m	7.590	503.393	mmho/m	1.000	0.000	
LL3		7.500	V		1500.000	Ohm-m			
		0.000	V		20.000	Ohm-m			
		-6.500	V		3800.000	mmho-m			

After Survey Verification

	Readings				Targets			Results	
	Zero	Cal	mmho/m		Zero	Cal	mmho/m	m'	b'
Deep	0.000	0.000	mmho/m	0.000	0.000	mmho/m	0.000	0.000	
Medium	0.000	0.000	mmho/m	0.000	0.000	mmho/m	0.000	0.000	
LL3		1.000	Ohm-m		1.000	Ohm-m			
		0.000	Ohm-m		0.000	Ohm-m			
		1.000	mmho-m		1.000	mmho-m			

Compensated Density Calibration Report

Serial-Model:
Source / Verifier:
Master Calibration Performed:

GEAR4-GEARHART
143 / 143
Fri Jan 16 10:06:35 2009

Master Calibration

	Density		Far Detector	Near Detector	
Magnesium	1.710	g/cc	1358.55	649.93	cps
Aluminum	2.580	g/cc	325.11	479.52	cps
Spine Angle = 78.00			Density/Spine Ratio = 0.595		
	Size		Reading		
Small Ring	8.00	in	3.22	V	
Large Ring	14.00	in	5.39	V	

Compensated Neutron Calibration Report

Serial Number: 6I
Tool Model: G

CALIBRATION

Detector	Readings		Target		Normalization
Short Space	1.00	cps	1.00	cps	1.0000
Long Space	1.00	cps	1.00	cps	1.0000

Gamma Ray Calibration Report

Serial Number: GR6
Tool Model: OPEN
Performed: Thu Jul 09 09:06:42 2009

Calibrator Value: 150.0 GAPI

Background Reading: 0.0 cps
Calibrator Reading: 276.0 cps

Sensitivity: 0.6835 GAPI/cps