



**SUPERIOR  
Hays,  
Kansas**

**MICRO  
LOG**

Company DIXON ENERGY, INC.  
Well ROLF LAND #3  
Field BARKIN  
County KINGMAN  
State KANSAS

Company DIXON ENERGY, INC.  
Well ROLF LAND #3  
Field BARKIN  
County KINGMAN State KANSAS

Location: API # : 15-095-22192-0000  
1250' FSL & 1330' FWL  
SEC 18 TWP 30S RGE 10W  
Permanent Datum GROUND LEVEL Elevation 1792  
Log Measured From KELLY BUSHING 11' A.G.L.  
Drilling Measured From KELLY BUSHING  
Other Services  
CDL/CNL  
DIL/SON  
Elevation  
K.B. 1803  
D.F. 1801  
G.L. 1792

Date	7/31/09		
Run Number	TWO		
Depth Driller	4875		
Depth Logger	4877		
Bottom Logged Interval	4869		
Top Log Interval	3460		
Casing Driller	8 5/8" @ 309'		
Casing Logger	307'		
Bit Size	7 7/8		
Type Fluid In Hole	CHEMICAL MUD		
Density / Viscosity	9.1 / 50	CHLORIDES 4,000	
pH / Fluid Loss	10.5 / 10.4		
Source of Sample	FLOWLINE		
Rm @ Meas. Temp	0.90 @ 98F		
Rmf @ Meas. Temp	0.68 @ 98F		
Rmc @ Meas. Temp	1.18 @ 98F		
Source of Rmf / Rmc	CAL/CAL		
Rm @ BHT	0.71 @ 124F		
Time Circulation Stopped	2 HOURS		
Time Logger on Bottom			
Maximum Recorded Temperature	124F		
Equipment Number	680		
Location	HAYS, KS		
Recorded By	JEFF GRONEWEG		
Witnessed By	RYAN DIXON		

<<< Fold Here >>>

All interpretations are opinions based on inferences from electrical or other measurements and we cannot and do not guarantee the accuracy or correctness of any interpretation, and we shall not, except in the case of gross or willful negligence on our part, be liable or responsible for any loss, costs, damages, or expenses incurred or sustained by anyone resulting from any interpretation made by any of our officers, agents or employees. These interpretations are also subject to our general terms and conditions set out in our current Price Schedule.

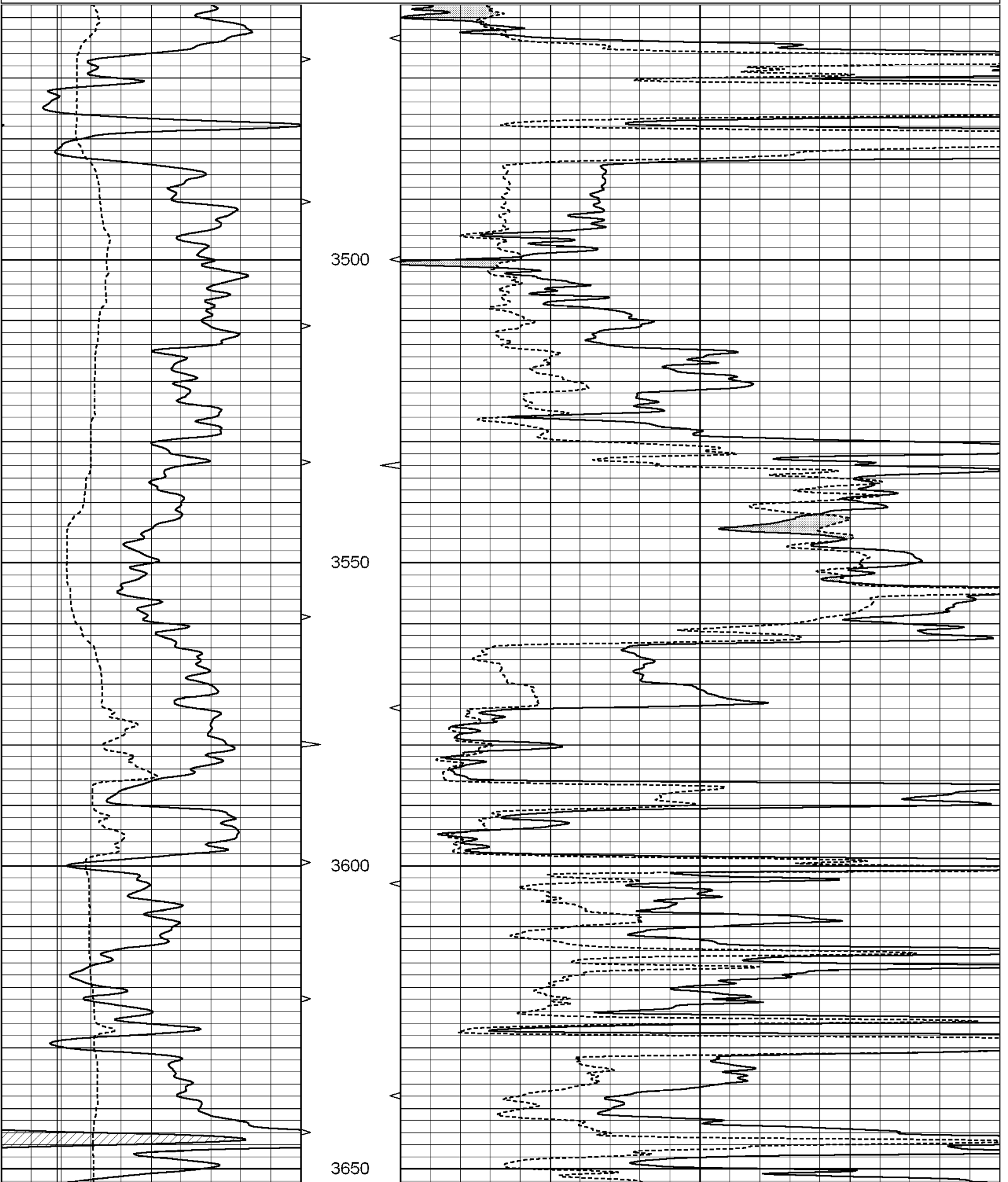
**Comments**

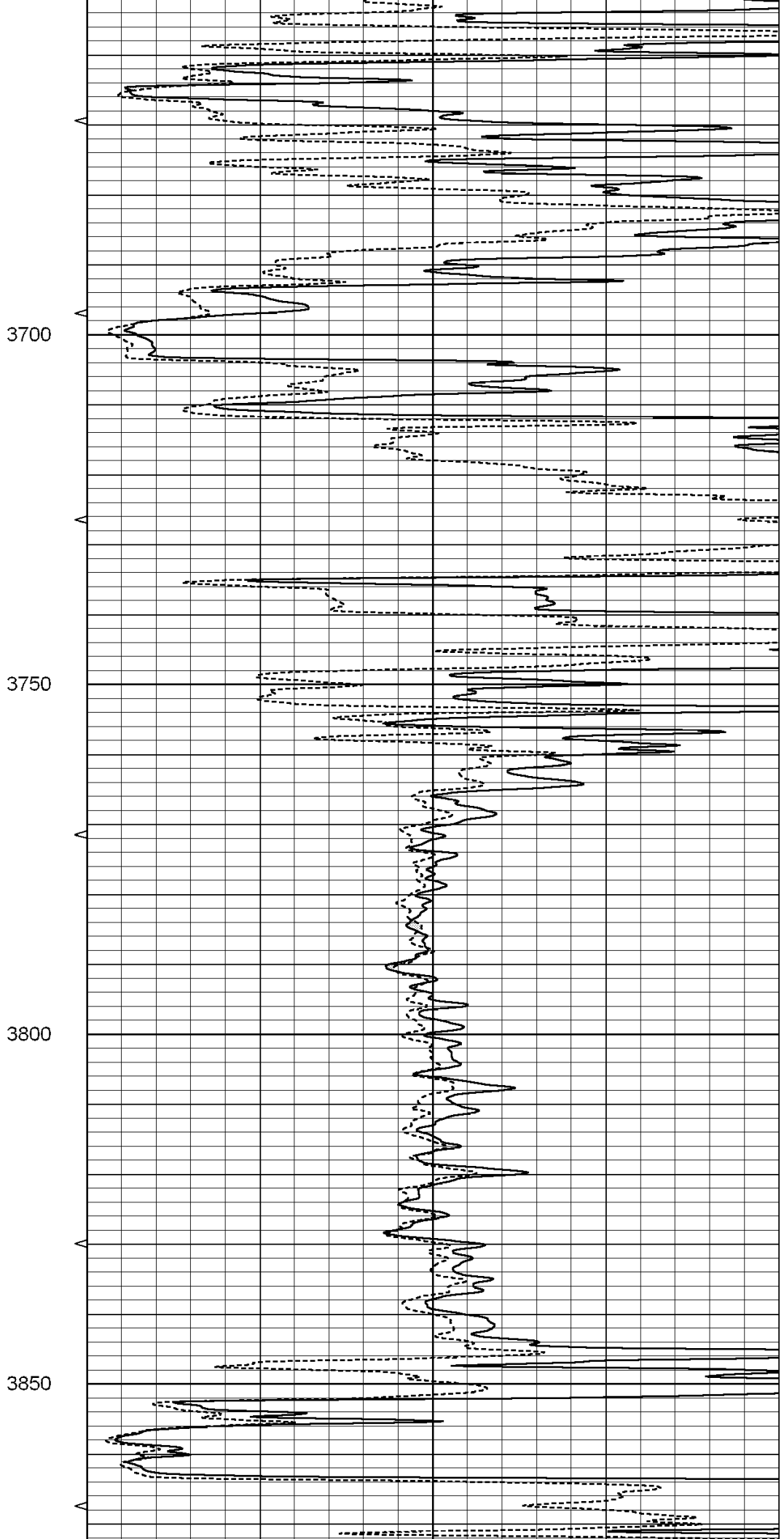
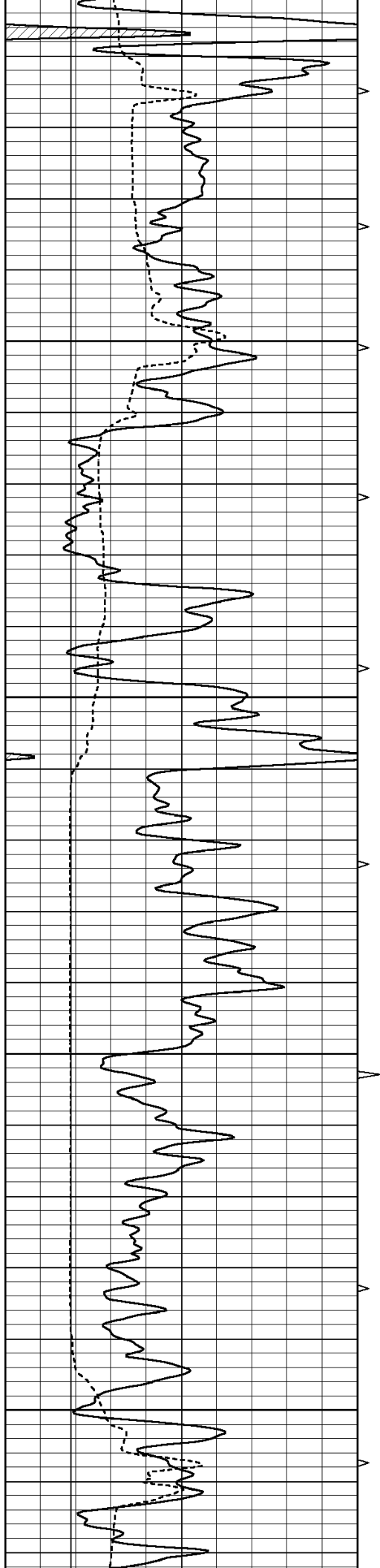
**THANK YOU FOR USING SUPERIOR WELL SERVICES  
HAYS, KS. 785-628-6395**

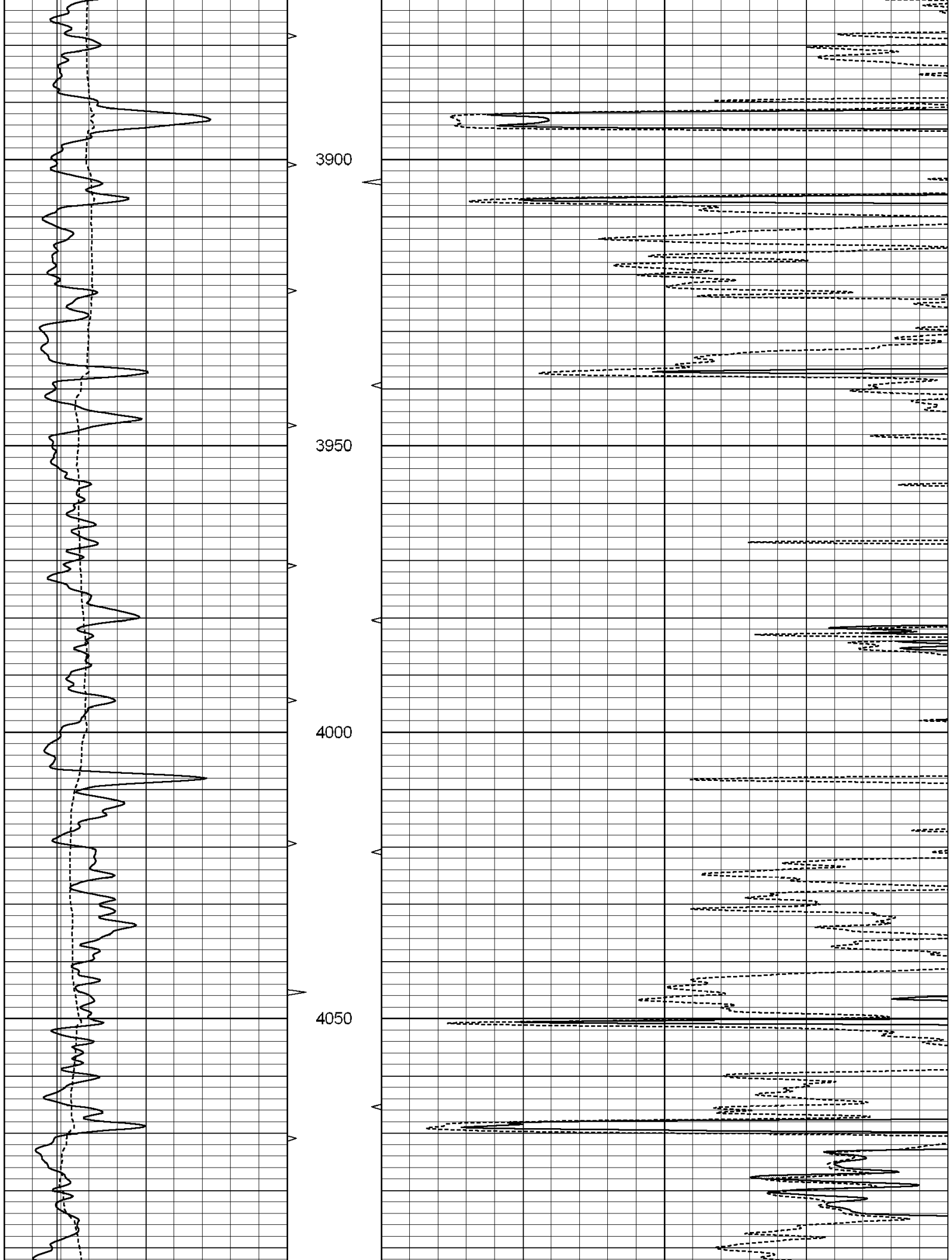
**DIRECTIONS: NASHVILLE, KS - SOUTH 1 MILE TO CEMETARY  
WEST 1 1/2 MILES - NORTH INTO**

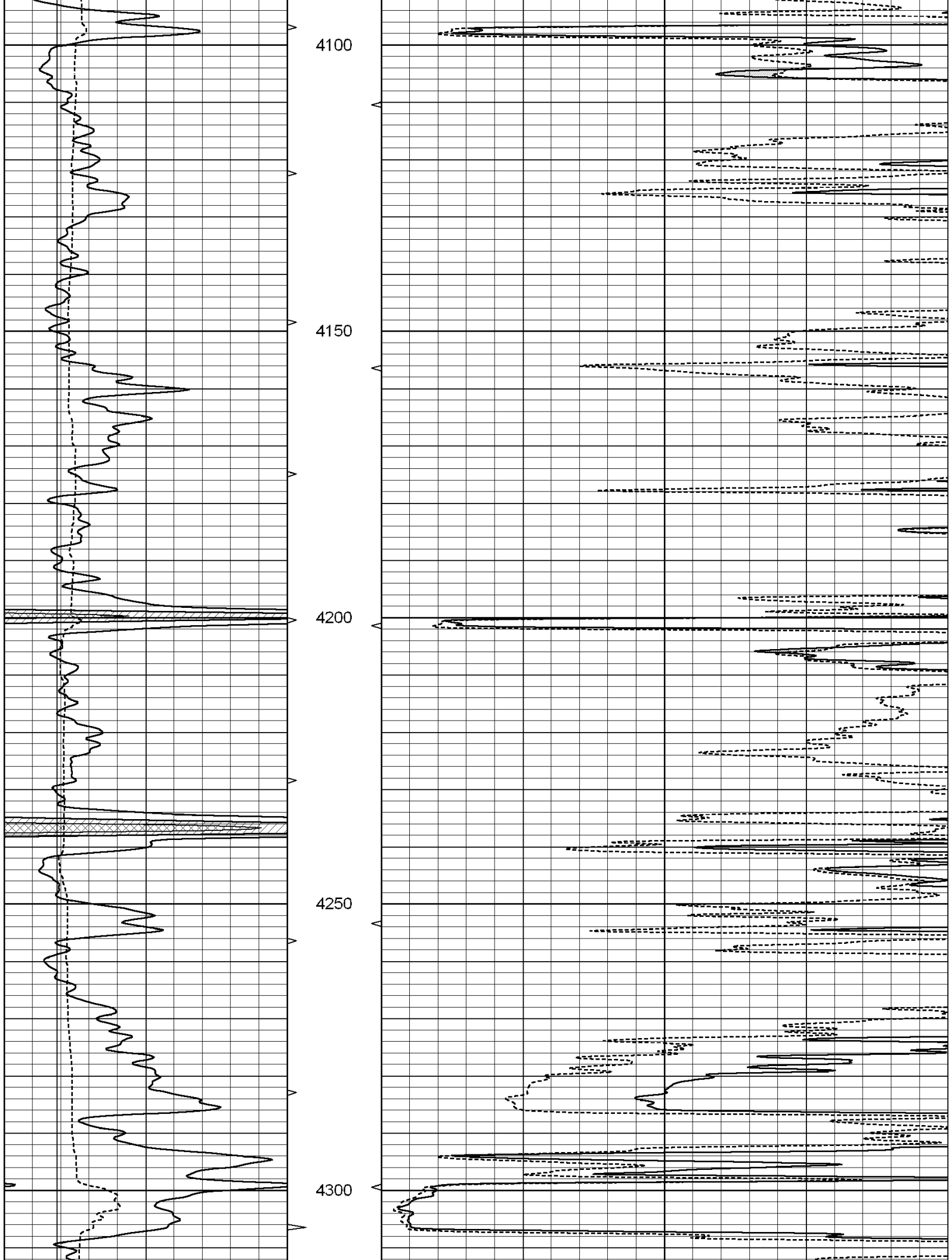
Database File: 004086ddn.db  
Dataset Pathname: pass6.2  
Presentation Format: \_micro  
Dataset Creation: Fri Jul 31 17:59:52 2009 by Calc Open-Cased 090629

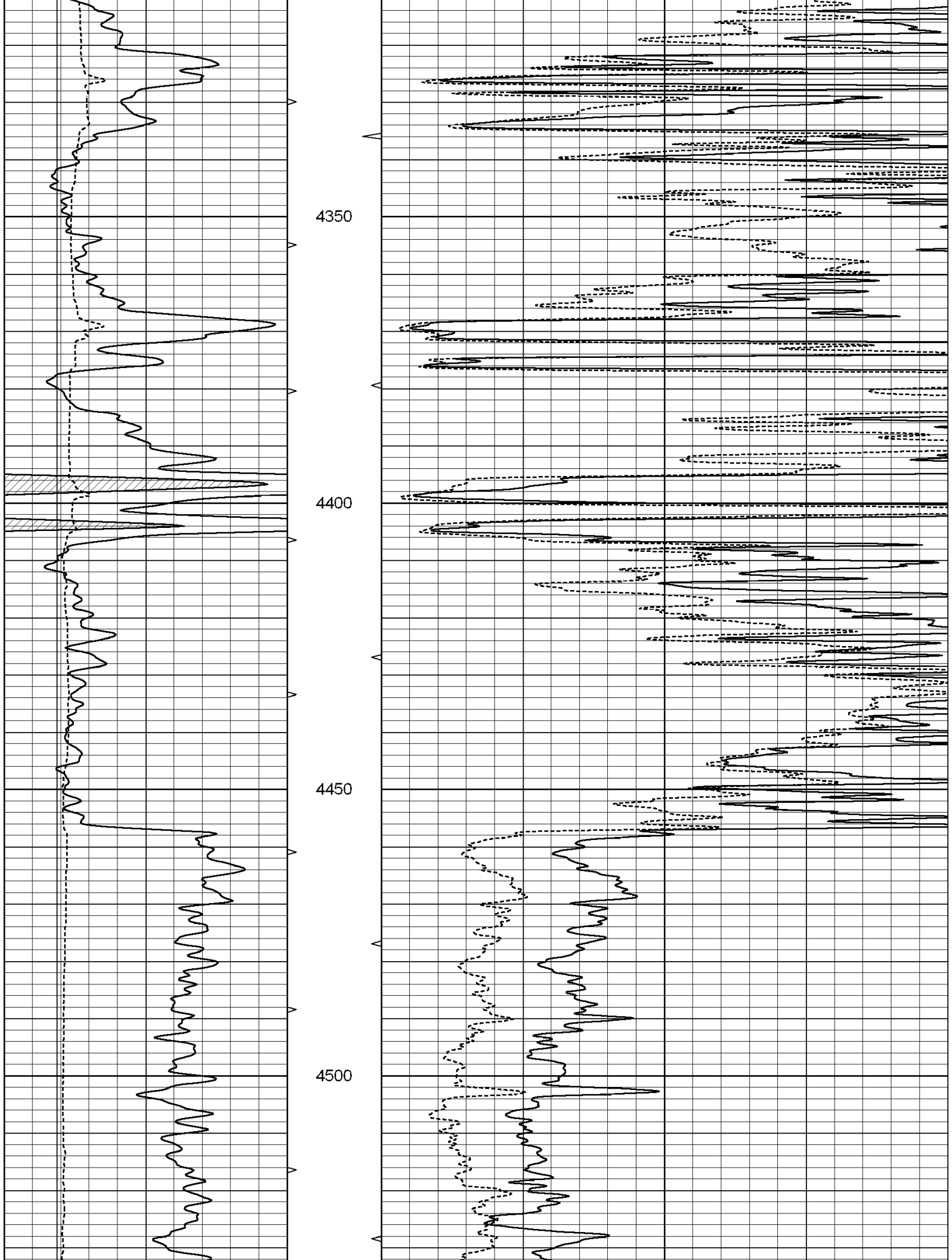
0	GAMMA RAY (GAPI)	150	ABHV	0	MEL1.5 (Ohm-m)	20
6	CALIPER (in)	16	10 (ft3)	0 0	MEL2.0 (Ohm-m)	20
			TBHV			
			0 (ft3)	10		

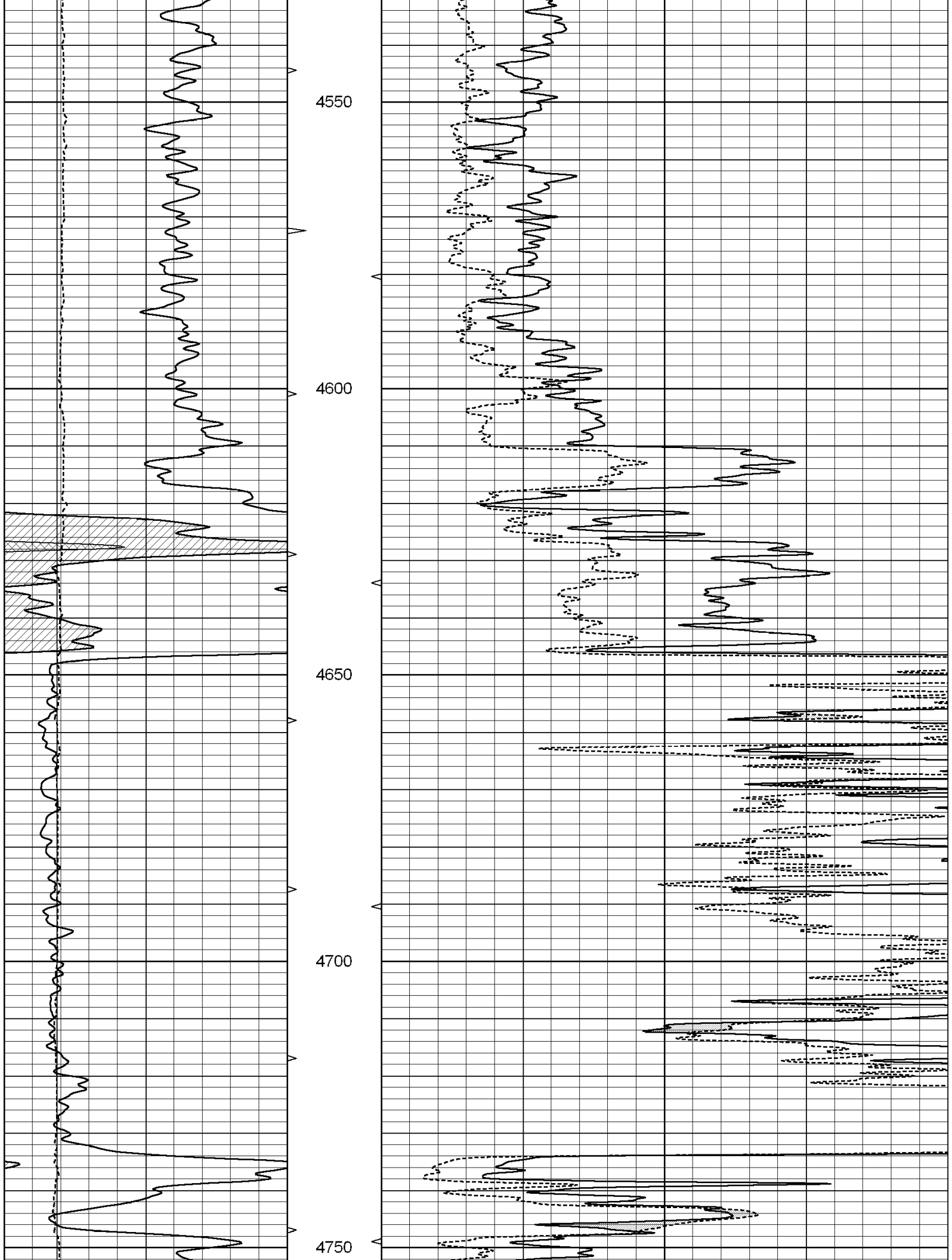


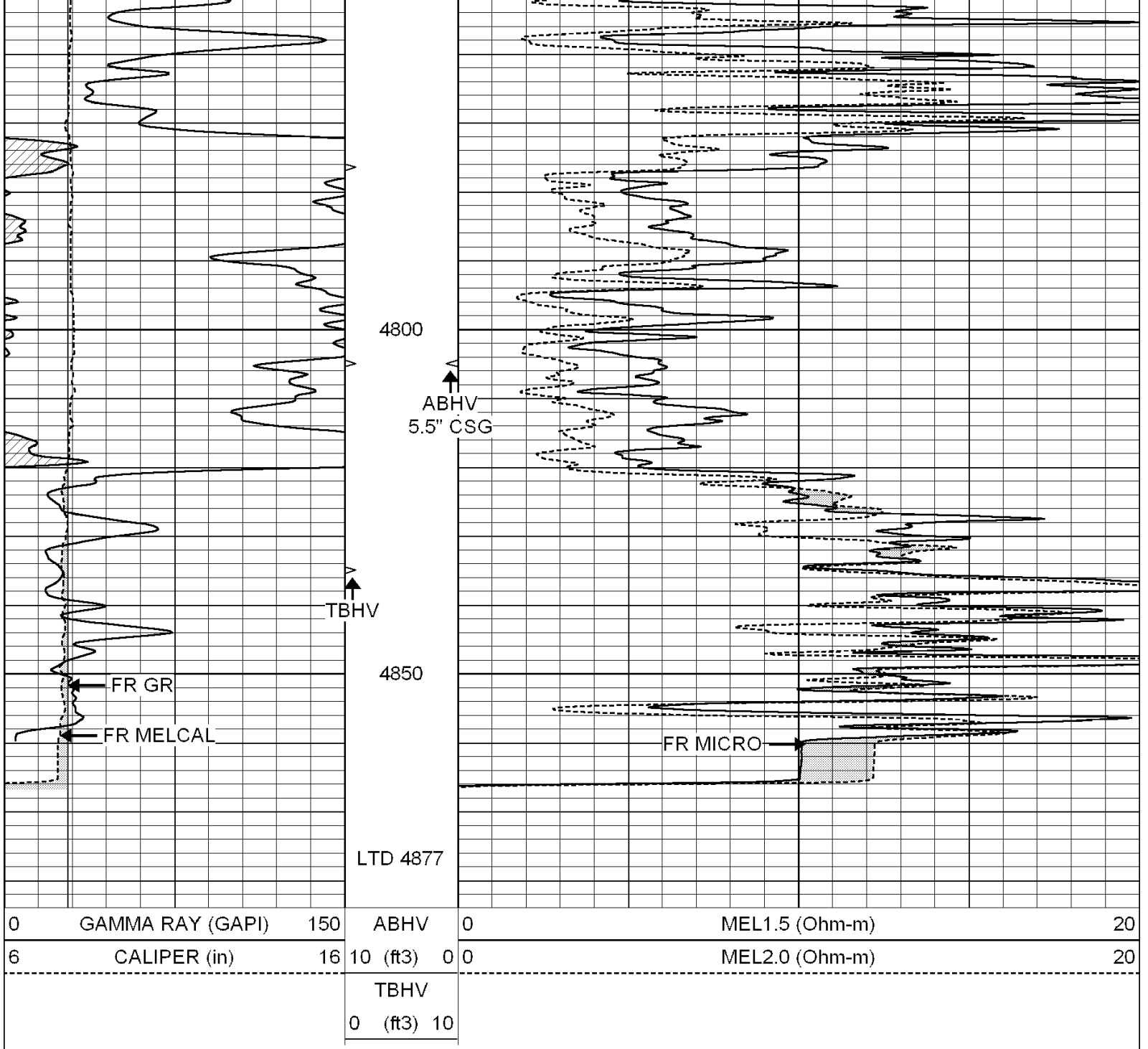










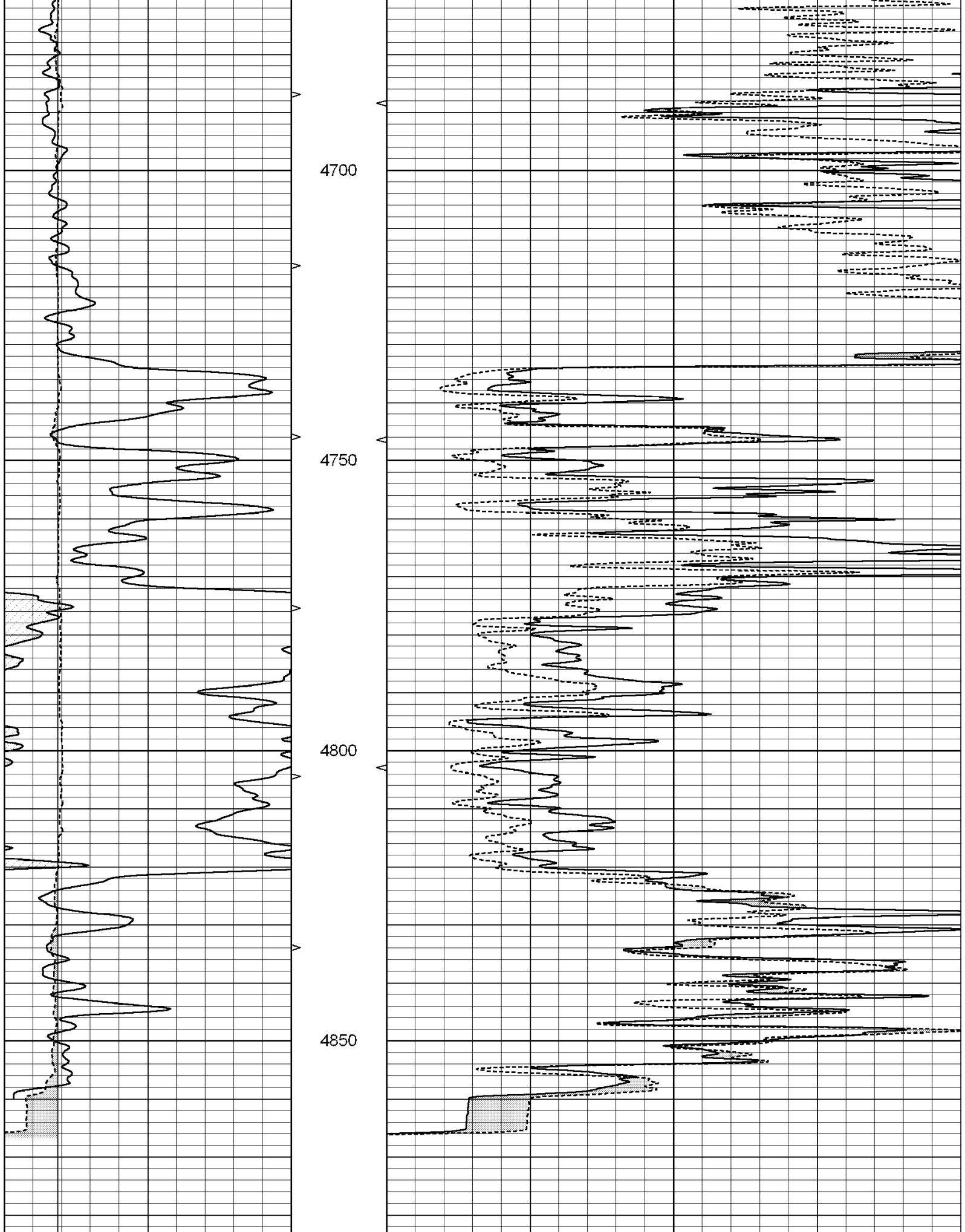


SUPERIOR  
Hays,  
Kansas

# REPEAT SECTION

Database File: 004086ddn.db  
 Dataset Pathname: pass5.1  
 Presentation Format: \_micro  
 Dataset Creation: Fri Jul 31 18:08:20 2009 by Calc Open-Cased 090629  
 Charted by: Depth in Feet scaled 1:240

0	GAMMA RAY (GAPI)	150	ABHV	0	MEL1.5 (Ohm-m)	20
6	CALIPER (in)	16	10 (ft3)	0 0	MEL2.0 (Ohm-m)	20
			TBHV			
			0 (ft3)	10		



0	GAMMA RAY (GAPI)	150	ABHV	0	MEL1.5 (Ohm-m)	20
6	CALIPER (in)	16 10 (#3)	0 0	0	MEL2.0 (Ohm-m)	20

TBHV
0 (ft3) 10

### Calibration Report

Database File: 004086ddn.db  
 Dataset Pathname: pass6.2  
 Dataset Creation: Fri Jul 31 17:59:52 2009 by Calc Open-Cased 090629

#### MICRO Calibration Report

Serial Number: MICRO6  
 Tool Model: PROBE  
 Performed: Wed Dec 12 15:00:13 2007

Caliper Calibration: Gain=3.900      Offset=3.277

	Low Cal	High Cal
References	7.900	14.250
Readings	1.185	2.814

1.5" Calibration: Gain=32.781      Offset=-0.751

	Low Cal	High Cal
References	0.000	20.000
Readings	0.008	1.200

2" Calibration: Gain=40.739      Offset=-1.093

	Low Cal	High Cal
References	0.000	20.000
Readings	0.008	0.888

#### Gamma Ray Calibration Report

Serial Number: GR6  
 Tool Model: OPEN  
 Performed: Thu Jul 09 09:06:42 2009

Calibrator Value: 150.0      GAPI

Background Reading:	0.0	cps
Calibrator Reading:	276.0	cps

Sensitivity: 0.6835      GAPI/cps