



**SUPERIOR
Hays,
Kansas**

**COMPENSATED
DENSITY/NEUTRON
LOG**

Company: DIXON ENERGY, INC.
Well: ROLF LAND #3
Field: BARKIN
County: KINGMAN
State: KANSAS

Company: DIXON ENERGY, INC.
Well: ROLF LAND #3
Field: BARKIN
County: KINGMAN
State: KANSAS

Location: 1250' FSL & 1330' FWL
API #: 15-095-22192-0000
SEC 18 TWP 30S RGE 10W
Permanent Datum: GROUND LEVEL
Log Measured From: KELLY BUSHING 11' A.G.L.
Drilling Measured From: KELLY BUSHING
Elevation: 1792
Other Services: DIL MEL/SON
K.B. 1803
D.F. 1801
G.L. 1792

Date	7/31/09		
Run Number	ONE		
Depth Driller	4875		
Depth Logger	4877		
Bottom Logged Interval	4853	2800	
Top Log Interval	3400	2500	
Casing Driller	8 5/8" @ 309'		
Casing Logger	307'		
Bit Size	7 7/8		
Type Fluid In Hole	CHEMICAL MUD		
Density / Viscosity	9.1 / 50	CHLORIDES 4,000	
pH / Fluid Loss	10.5 / 10.4		
Source of Sample	FLOWLINE		
Rm @ Meas. Temp	0.90 @ 98F		
Rmf @ Meas. Temp	0.68 @ 98F		
Rmc @ Meas. Temp	1.18 @ 98F		
Source of Rmf / Rmc	CAL/CAL		
Rm @ BHT	0.71 @ 124F		
Time Circulation Stopped	2 HOURS		
Time Logger on Bottom			
Maximum Recorded Temperature	124F		
Equipment Number	680		
Location	HAYS, KS		
Recorded By	JEFF GRONEWEG		
Witnessed By	RYAN DIXON		

<<< Fold Here >>>

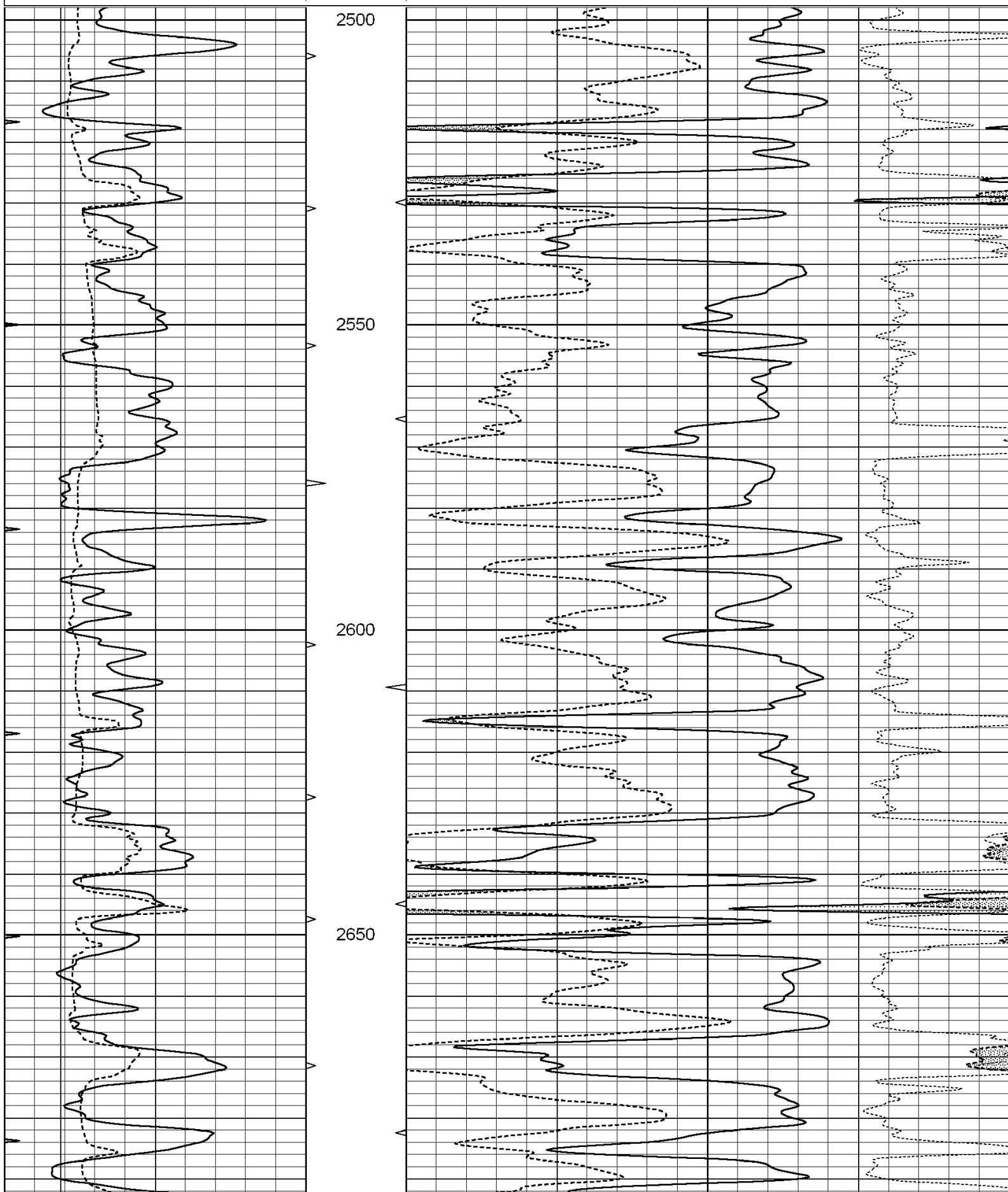
All interpretations are opinions based on inferences from electrical or other measurements and we cannot and do not guarantee the accuracy or correctness of any interpretation, and we shall not, except in the case of gross or willful negligence on our part, be liable or responsible for any loss, costs, damages, or expenses incurred or sustained by anyone resulting from any interpretation made by any of our officers, agents or employees. These interpretations are also subject to our general terms and conditions set out in our current Price Schedule.

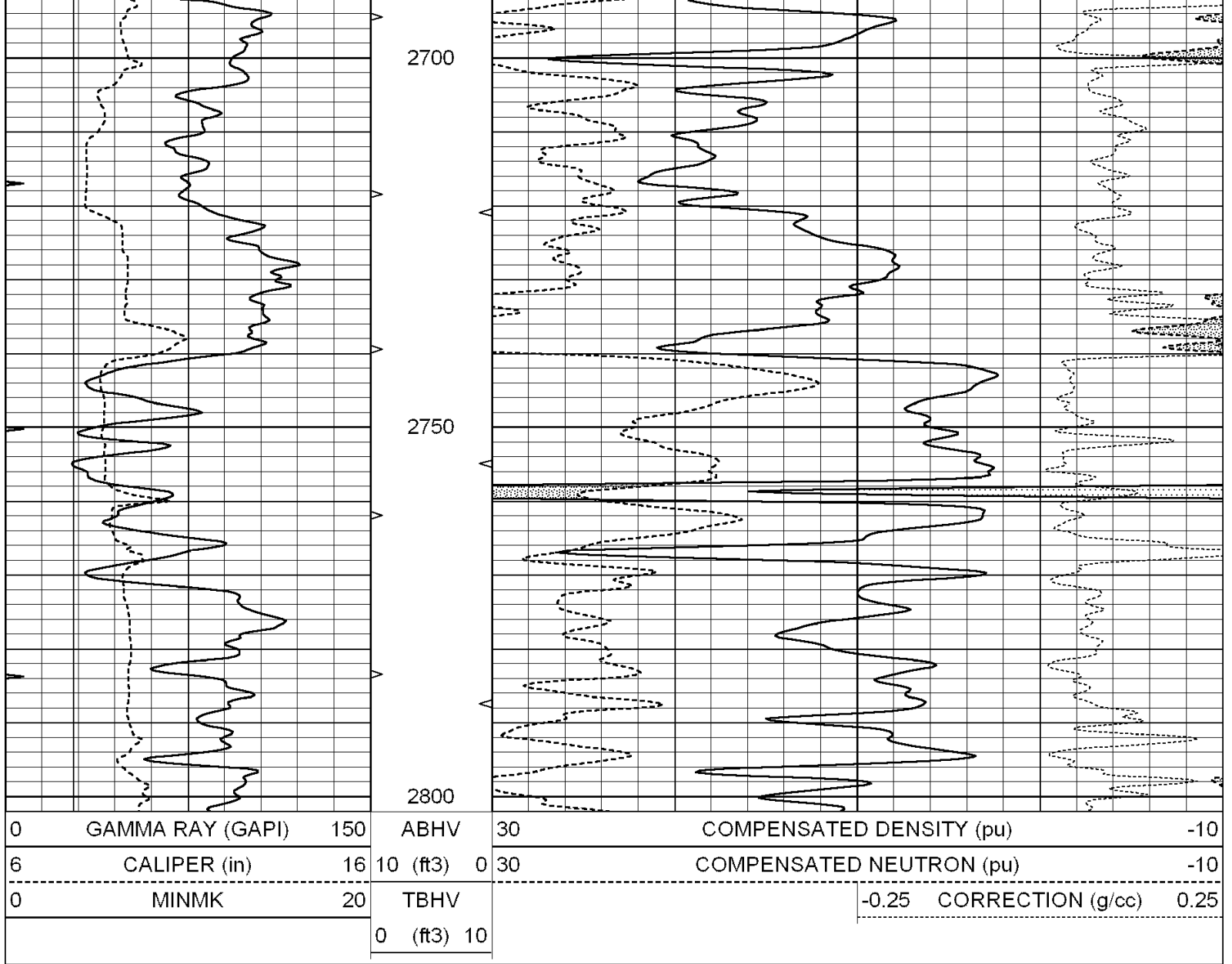
Comments

**THANK YOU FOR USING SUPERIOR WELL SERVICES
HAYS, KS. 785-628-6395**

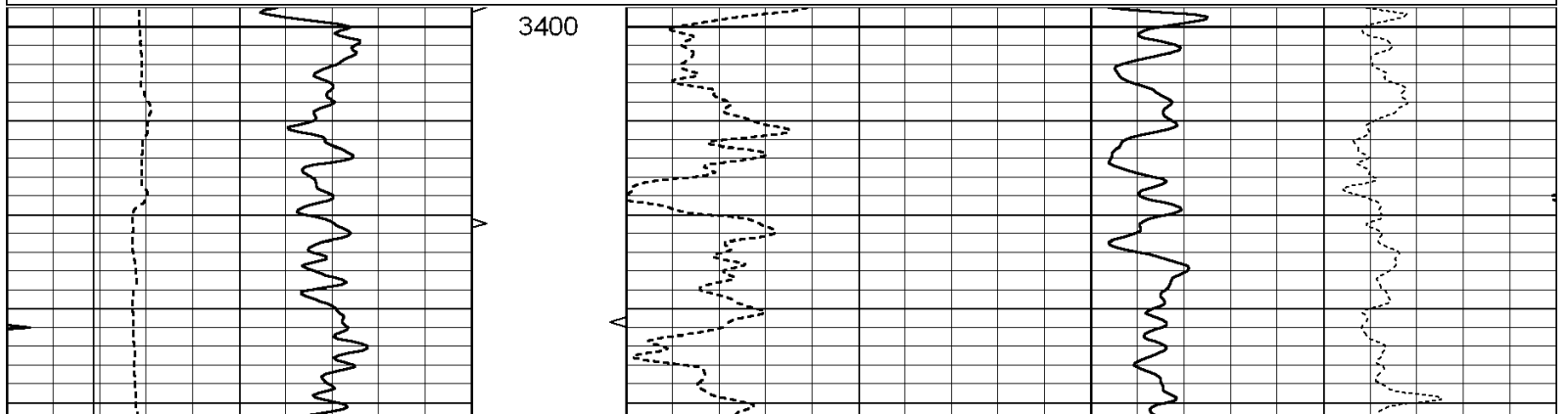
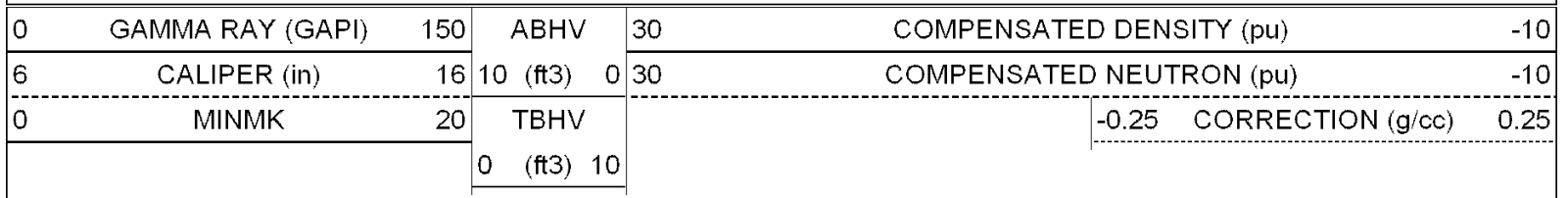
**DIRECTIONS: NASHVILLE, KS - SOUTH 1 MILE TO CEMETARY
WEST 1 1/2 MILES - NORTH INTO**

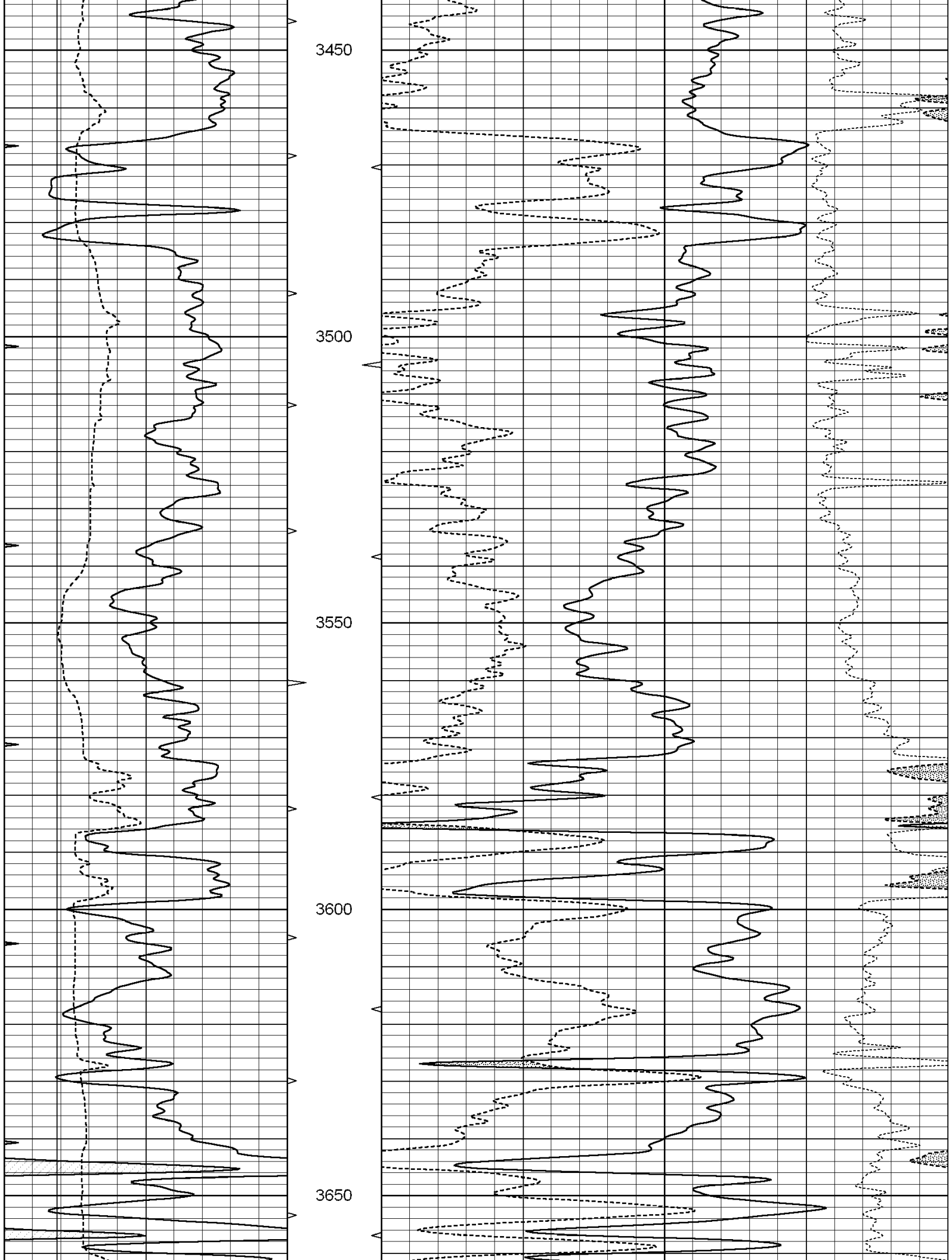
0	GAMMA RAY (GAPI)	150	ABHV	30	COMPENSATED DENSITY (pu)	-10
6	CALIPER (in)	16	10 (ft3) 0	30	COMPENSATED NEUTRON (pu)	-10
0	MINMK	20	TBHV		-0.25 CORRECTION (g/cc)	0.25
			0 (ft3) 10			

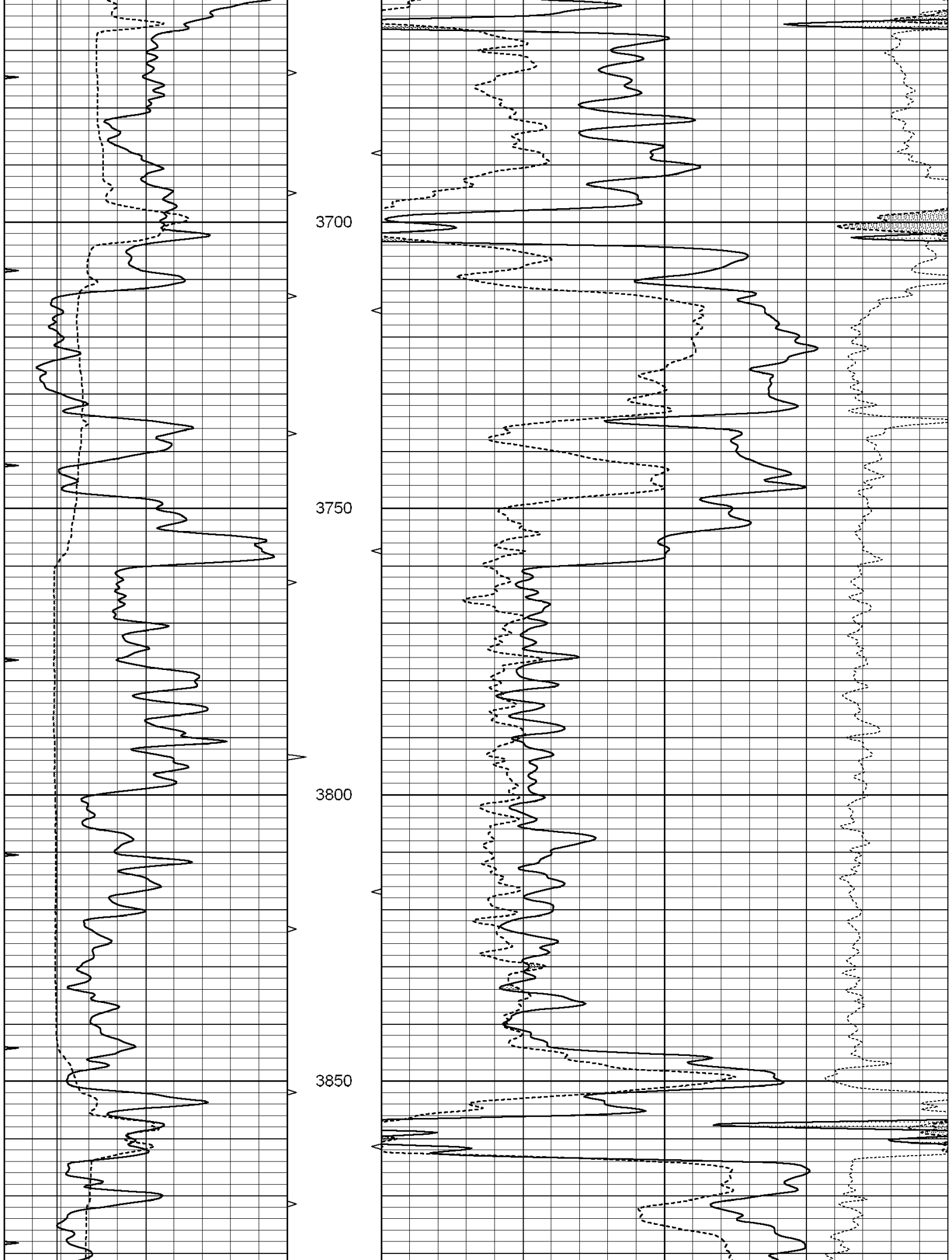


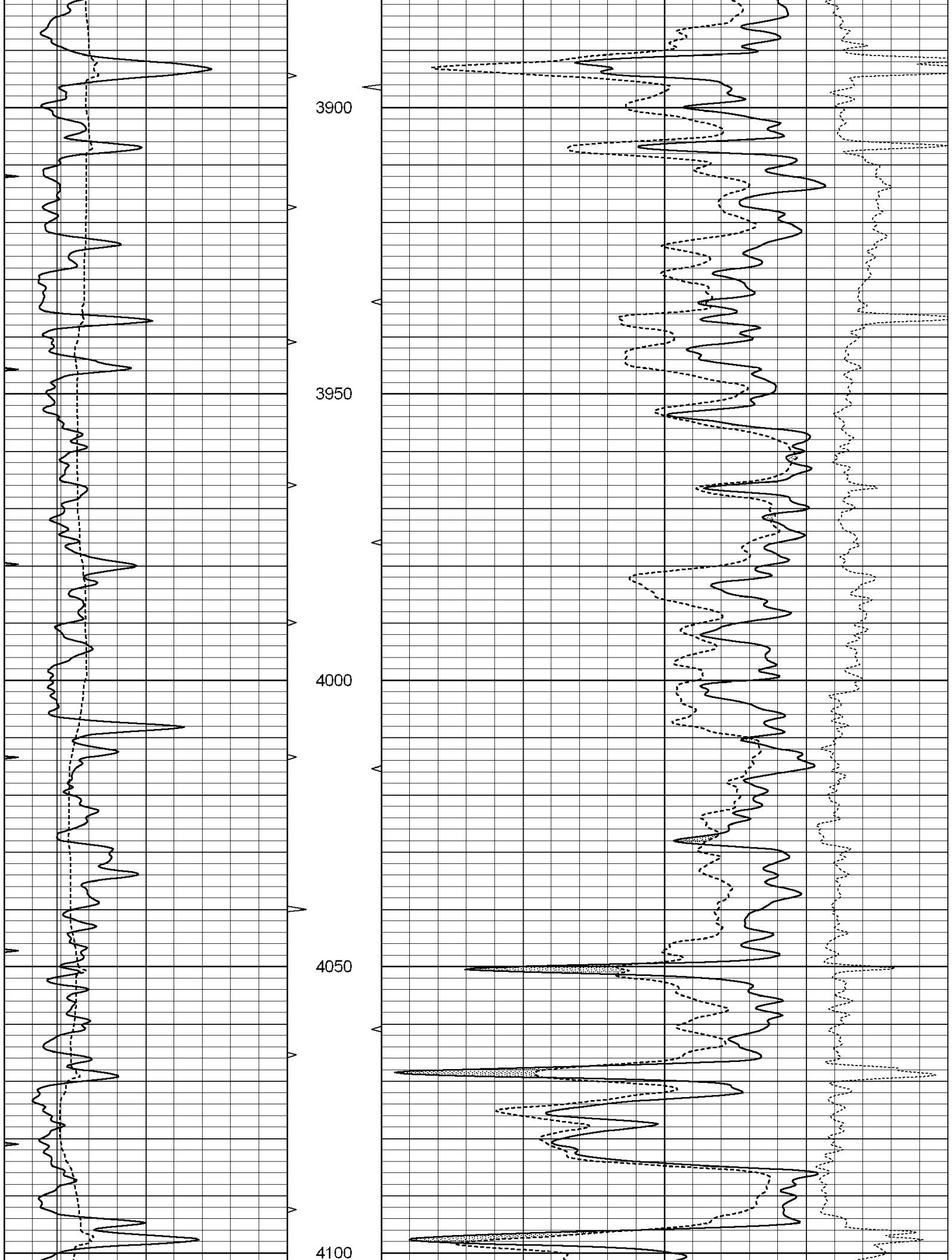


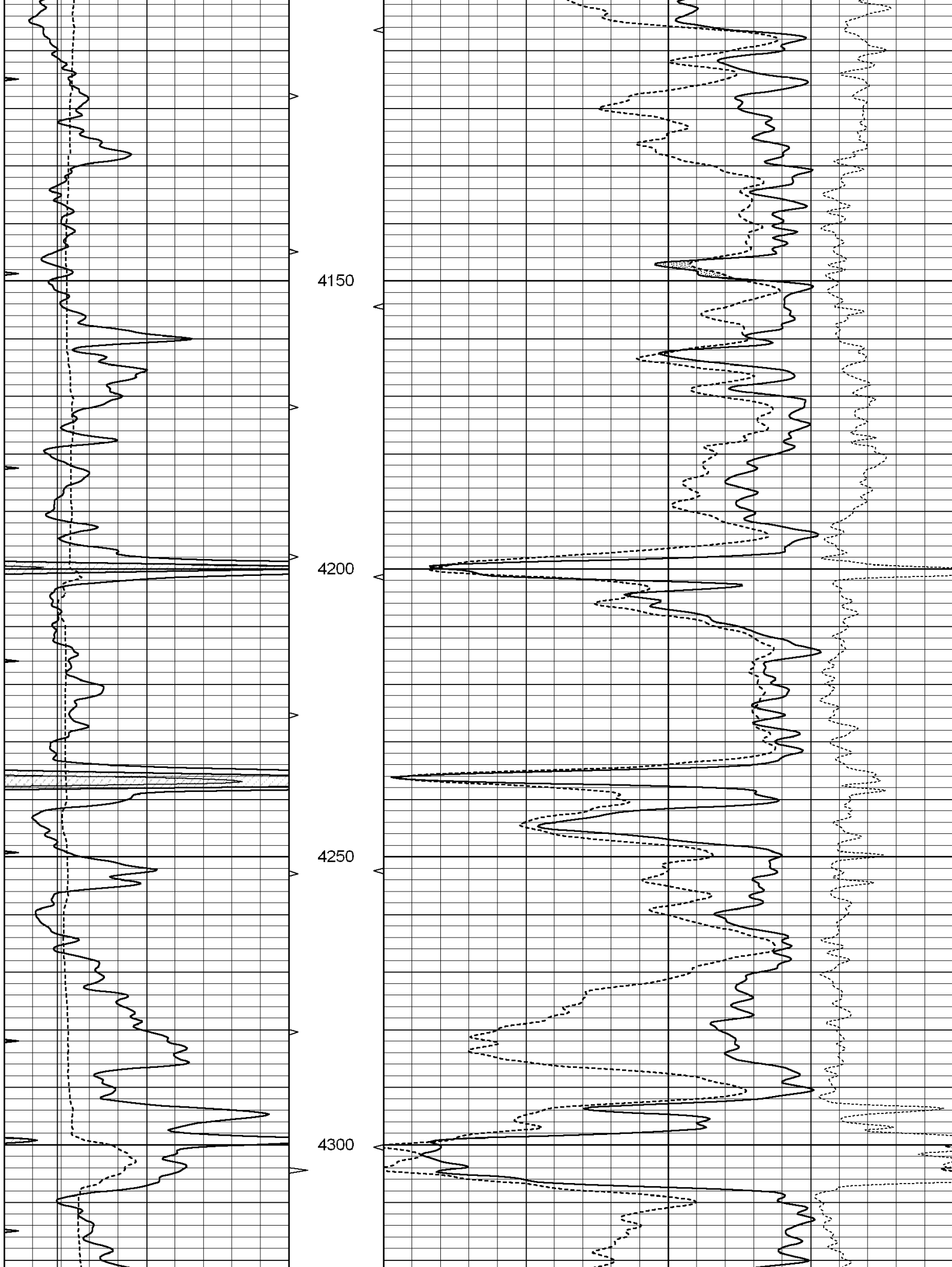
Database File: 004086ddn.db
 Dataset Pathname: pass3.1.1
 Presentation Format: _den_neu
 Dataset Creation: Fri Jul 31 15:44:58 2009
 Charted by: Depth in Feet scaled 1:240

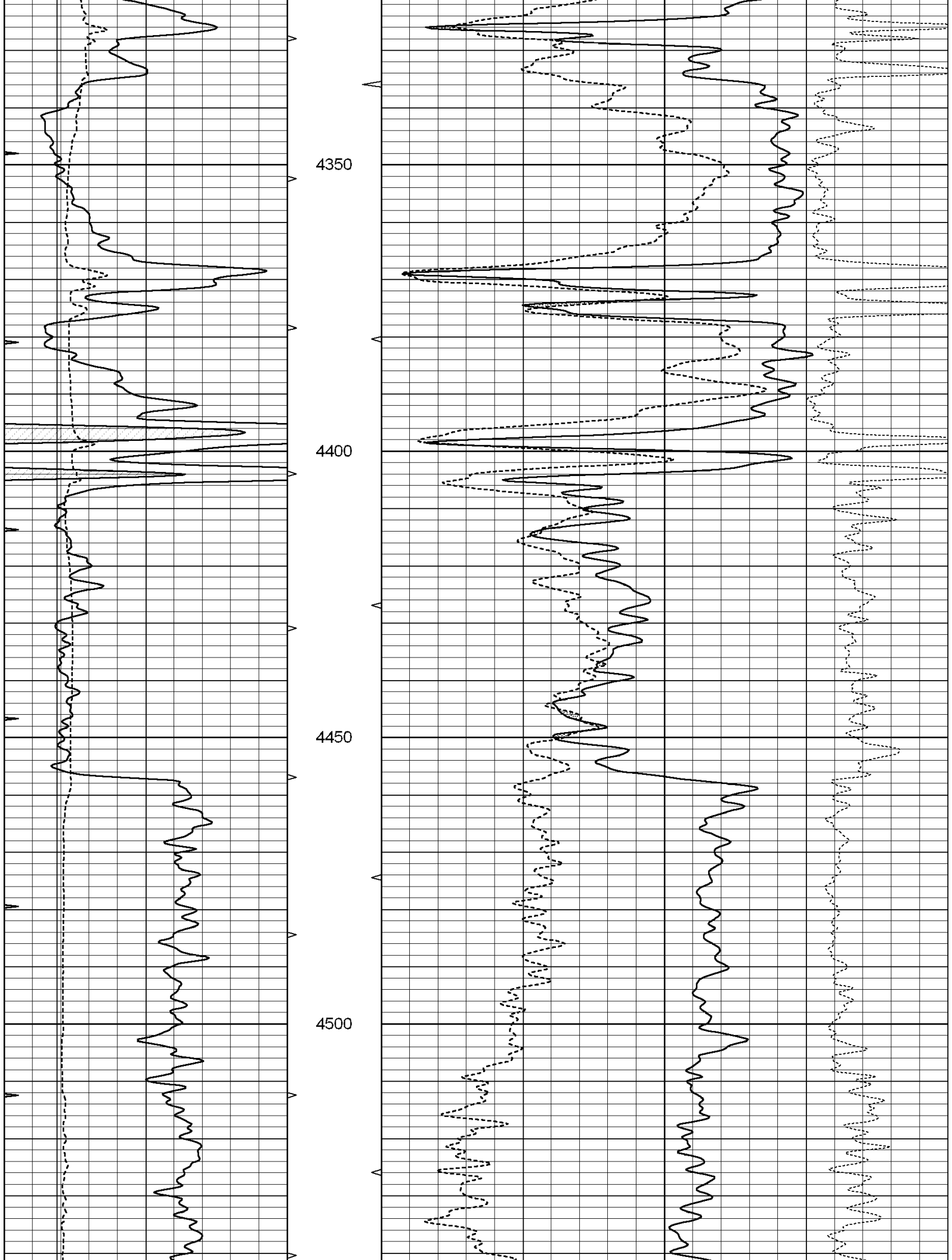


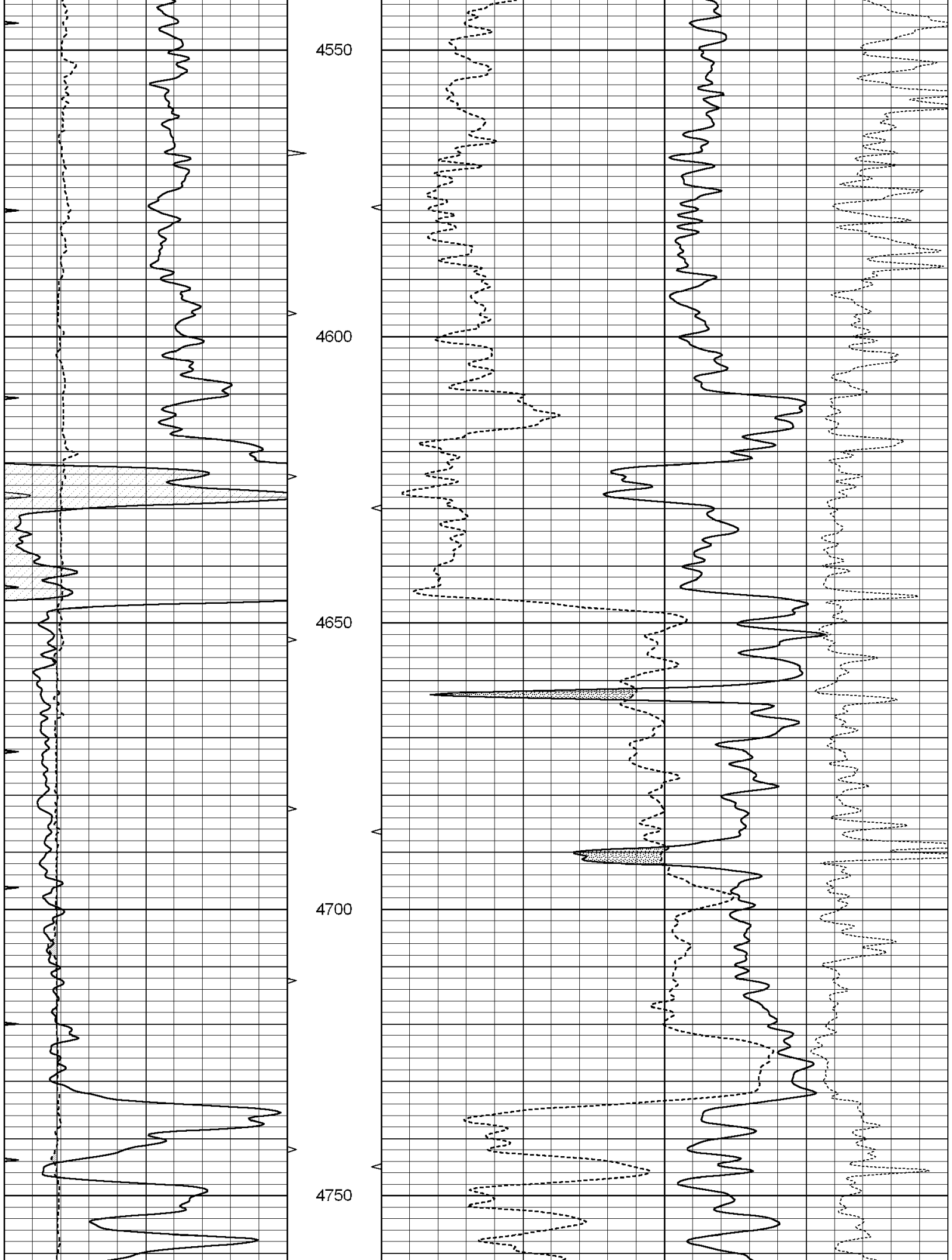


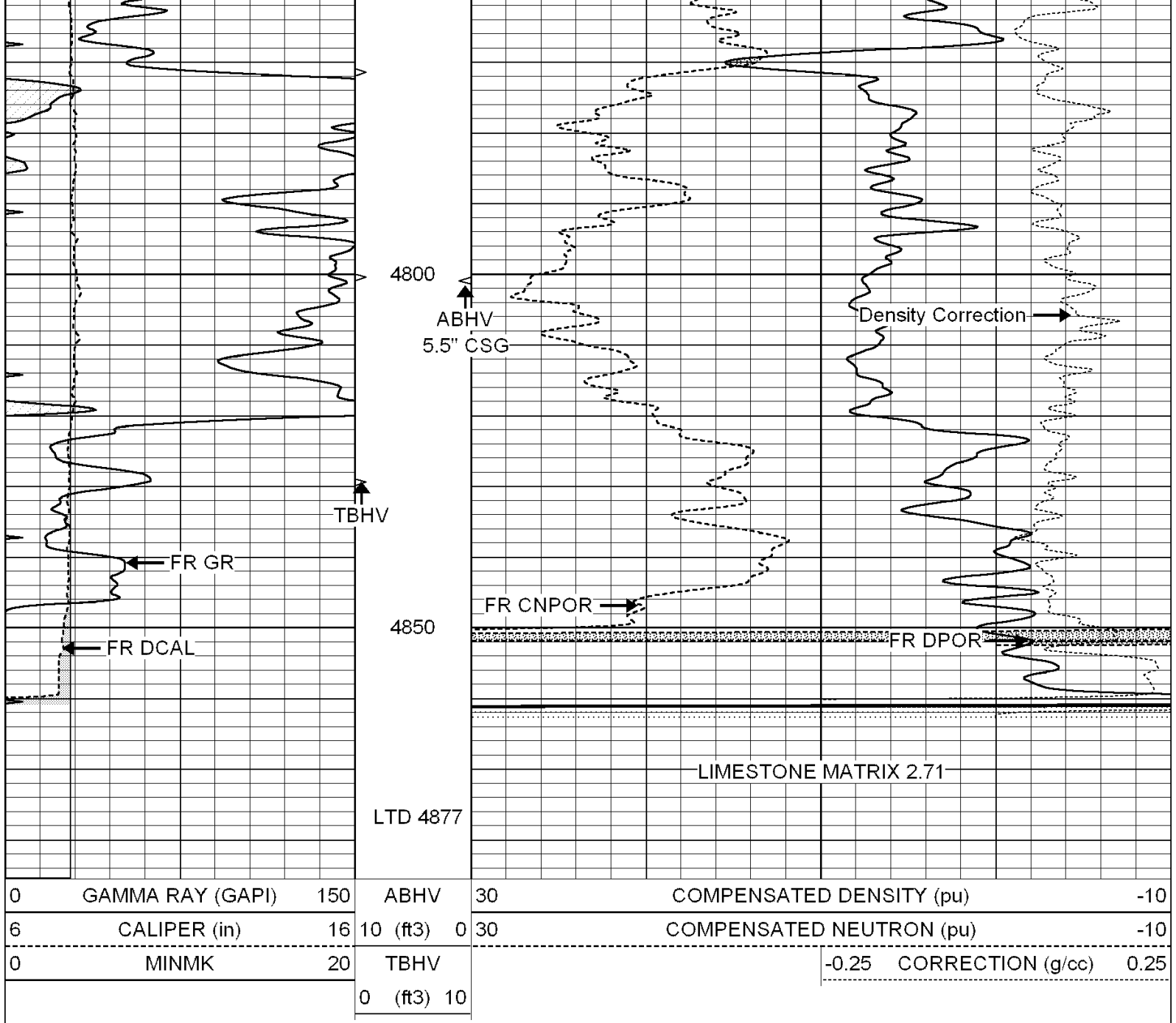










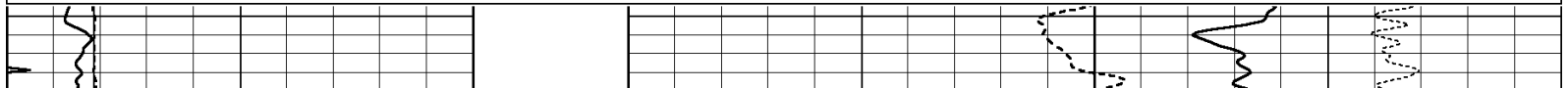


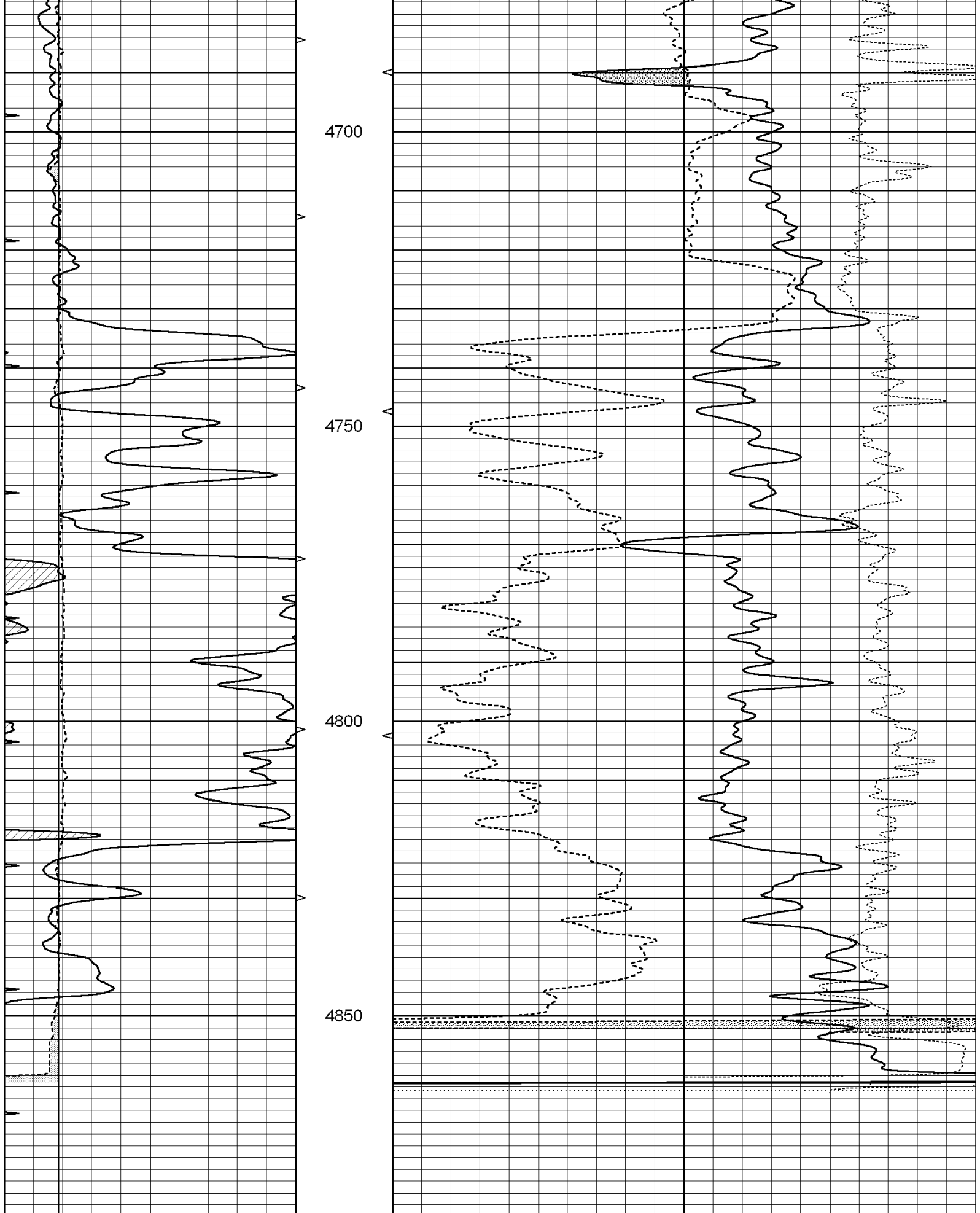
SUPERIOR
Hays,
Kansas

REPEAT SECTION

Database File: 004086ddn.db
 Dataset Pathname: pass2.1
 Presentation Format: _den_neu
 Dataset Creation: Fri Jul 31 14:52:58 2009 by Calc Open-Cased 090629
 Charted by: Depth in Feet scaled 1:240

0	GAMMA RAY (GAPI)	150	ABHV	30	COMPENSATED DENSITY (pu)	-10
6	CALIPER (in)	16	10 (ft3)	0 30	COMPENSATED NEUTRON (pu)	-10
0	MINMK	20	TBHV		-0.25 CORRECTION (g/cc)	0.25
			0 (ft3)	10		





0	GAMMA RAY (GAPI)	150	ABHV	30	COMPENSATED DENSITY (pu)	-10
6	CALIPER (in)	16	10 (ft3)	0 30	COMPENSATED NEUTRON (pu)	-10
0	MINMK	20	TBHV		-0.25 CORRECTION (g/cc)	0.25

Calibration Report

Database File: 004086ddn.db
 Dataset Pathname: pass3.2
 Dataset Creation: Fri Jul 31 16:14:20 2009 by Calc Open-Cased 090629

Dual Induction Calibration Report

Serial-Model: PROBE8-DILG
 Surface Cal Performed: Fri Aug 01 06:33:19 2008
 Downhole Cal Performed: Mon Jul 28 11:08:27 2008
 After Survey Verification Performed: Mon Jul 28 11:08:27 2008

Surface Calibration

Loop:	Readings			References			Results	
	Air	Loop		Air	Loop		m	b
Deep	0.015	0.648	V	0.000	400.000	mmho/m	632.616	-9.730
Medium	0.029	0.796	V	0.000	464.000	mmho/m	605.049	-17.680
Internal:	Zero	Cal		Zero	Cal		m	b
Deep	0.017	0.657	V	0.000	400.000	mmho/m	625.153	-10.619
Medium	0.016	0.757	V	0.000	464.000	mmho/m	625.992	-9.739

Downhole Calibration

	Readings			References			Results	
	Zero	Cal		Zero	Cal		m'	b'
Deep	0.000	0.000	mmho/m	2.011	405.777	mmho/m	1.000	0.000
Medium	0.000	0.000	mmho/m	7.590	503.393	mmho/m	1.000	0.000
LL3		7.500	V		1500.000	Ohm-m		
		0.000	V		20.000	Ohm-m		
		-6.500	V		3800.000	mmho-m		

After Survey Verification

	Readings			Targets			Results	
	Zero	Cal		Zero	Cal		m'	b'
Deep	0.000	0.000	mmho/m	0.000	0.000	mmho/m	0.000	0.000
Medium	0.000	0.000	mmho/m	0.000	0.000	mmho/m	0.000	0.000
LL3		1.000	Ohm-m		1.000	Ohm-m		
		0.000	Ohm-m		0.000	Ohm-m		
		1.000	mmho-m		1.000	mmho-m		

Compensated Density Calibration Report

Serial-Model: GEAR4-GEARHART
 Source / Verifier: 143 / 143
 Master Calibration Performed: Fri Jan 16 10:06:35 2009

Master Calibration

	Density		Far Detector	Near Detector	
Magnesium	1.710	g/cc	1358.55	649.93	cps
Aluminum	2.580	g/cc	325.11	479.52	cps

Spine Angle = 78.00

Density/Spine Ratio = 0.595

Size

Reading

Small Ring	8.00	in	3.22	V
Large Ring	14.00	in	5.39	V

Compensated Neutron Calibration Report

Serial Number: 6I
Tool Model: G

CALIBRATION

Detector	Readings	Target	Normalization
Short Space	1.00 cps	1.00 cps	1.0000
Long Space	1.00 cps	1.00 cps	1.0000

Gamma Ray Calibration Report

Serial Number: GR6
Tool Model: OPEN
Performed: Thu Jul 09 09:06:42 2009

Calibrator Value: 150.0 GAPI

Background Reading: 0.0 cps
Calibrator Reading: 276.0 cps

Sensitivity: 0.6835 GAPI/cps