



Dual Induction Log

DIGITAL LOG (785) 625-3858

API No.	15-135-24,925-00-00	
Company	Pickrell Drilling Company, Inc.	
Well	Bernbeck "A" No 1	
Field	Wildcat	
County	Ness	State Kansas
Location	SW NE SW SE 700' FSL & 1910' FEL	
Sec: 26	Twp: 16S	Rge: 26W
Other Services	CNL/CDL	

Permanent Datum	Ground Level	Elevation 2620
Log Measured From	Kelly Bushing	5 Ft. Above Perm. Datum
Drilling Measured From	Froth Kelly Bushing	
Date	07/13/2009	

Run Number	One
Depth Driller	4650
Depth Logger	4649
Bottom Logged Interval	4648
Top Log Interval	200
Casing Driller	8.625 @ 255
Casing Logger	248
Bit Size	7.875
Type Fluid in Hole	Chemical
Salinity, ppm CL	5,000
Density / Viscosity	9.5 51
pH / Fluid Loss	9.5 9.6
Source of Sample	Flowline
Rm @ Meas. Temp	.6 @ 78
Rmf @ Meas. Temp	.45 @ 78
Rmc @ Meas. Temp	.81 @ 78
Source of Rmf / Rmc	Charts
Rm @ BHT	.38 @ 125
Operating Rig Time	4 Hours
Max Rec. Temp. F	125
Equipment Number	17
Location	Hays
Recorded By	Mike Garrison
Witnessed By	Sean Deenihan

<<< Fold Here >>>

All interpretations are opinions based on inferences from electrical or other measurements and we cannot and do not guarantee the accuracy or correctness of any interpretation, and we shall not, except in the case of gross or willful negligence on our part, be liable or responsible for any loss, costs, damages, or expenses incurred or sustained by anyone resulting from any interpretation made by any of our officers, agents or employees. These interpretations are also subject to our general terms and conditions set out in our current Price Schedule.

Comments

Thank you for using Log-Tech, Inc.
(785) 625-3858

Utica, 1/2 East, 1 South on E Rd, West Into

Database File: c:\warrior\data\pickrell_bernbeck a no 1\pickrellhd.db
 Dataset Pathname: dil/pickstck
 Presentation Format: dil2in
 Dataset Creation: Mon Jul 13 10:46:14 2009
 Charted by: Depth in Feet scaled 1:600

0 Gamma Ray 150
-200 SP (MV) 0

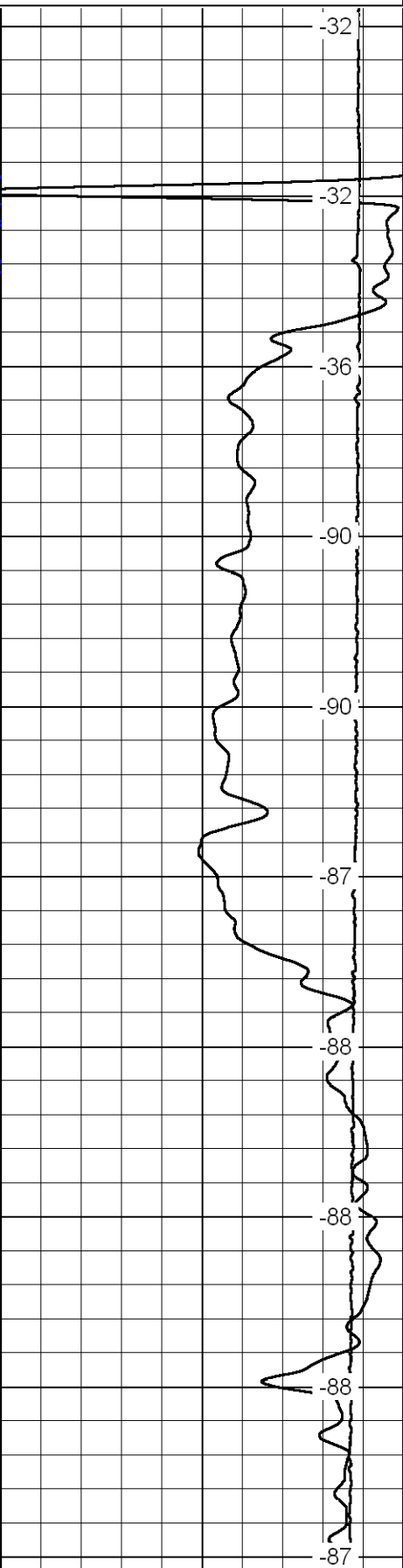
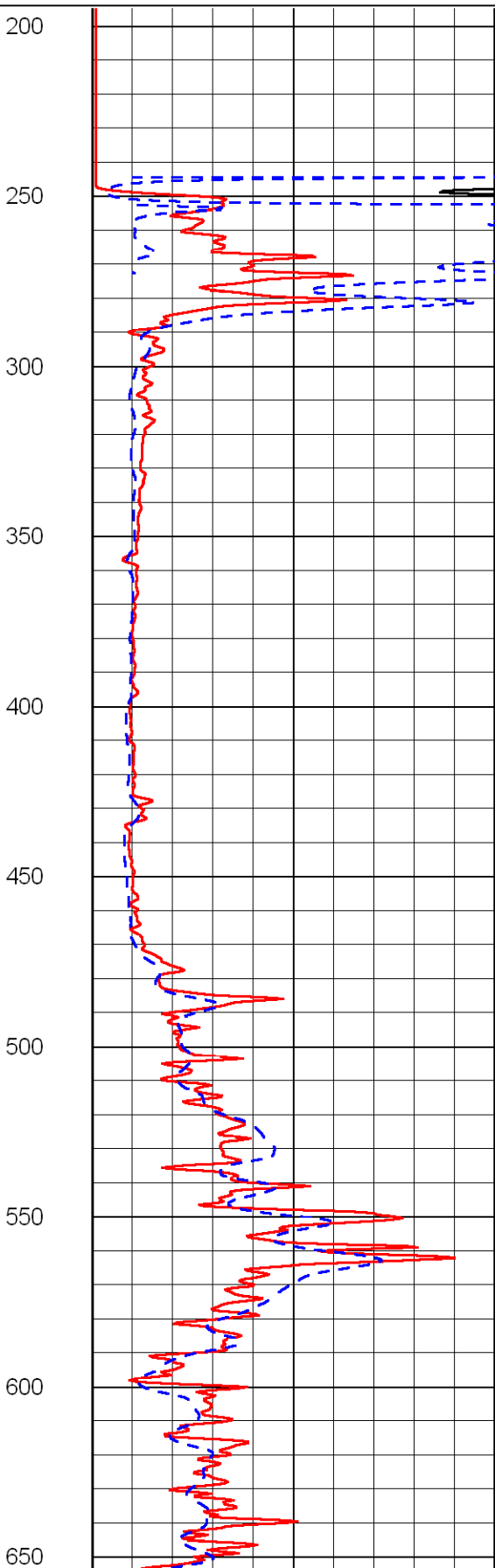
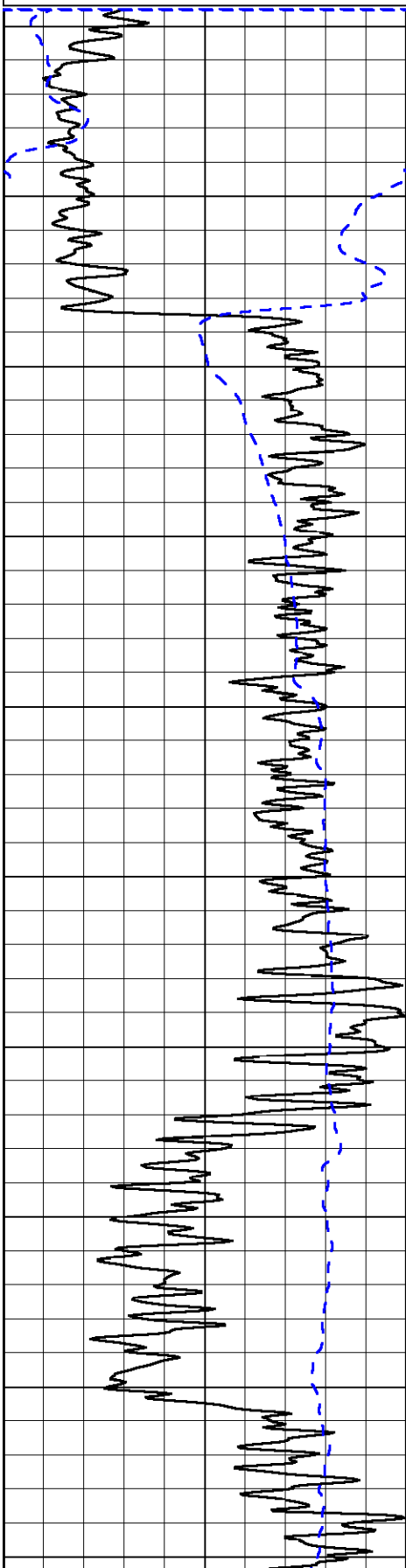
0 Shallow Resistivity (Ohm-m) 50
0 Deep Resistivity (Ohm-m) 50

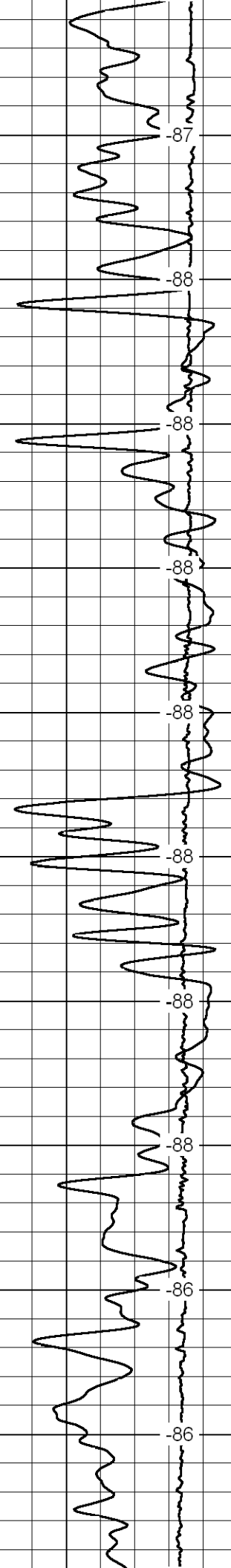
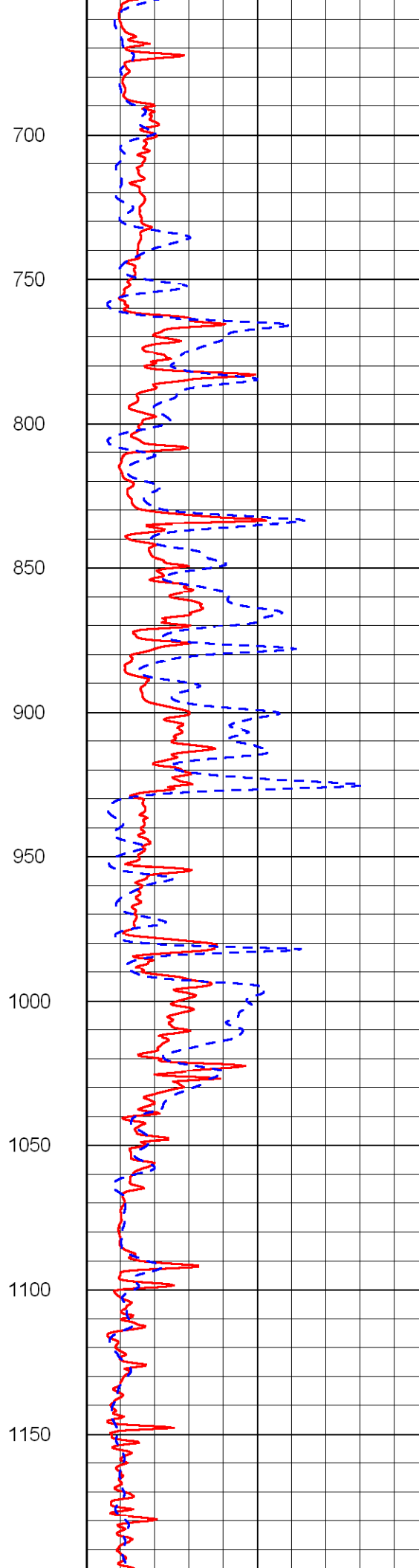
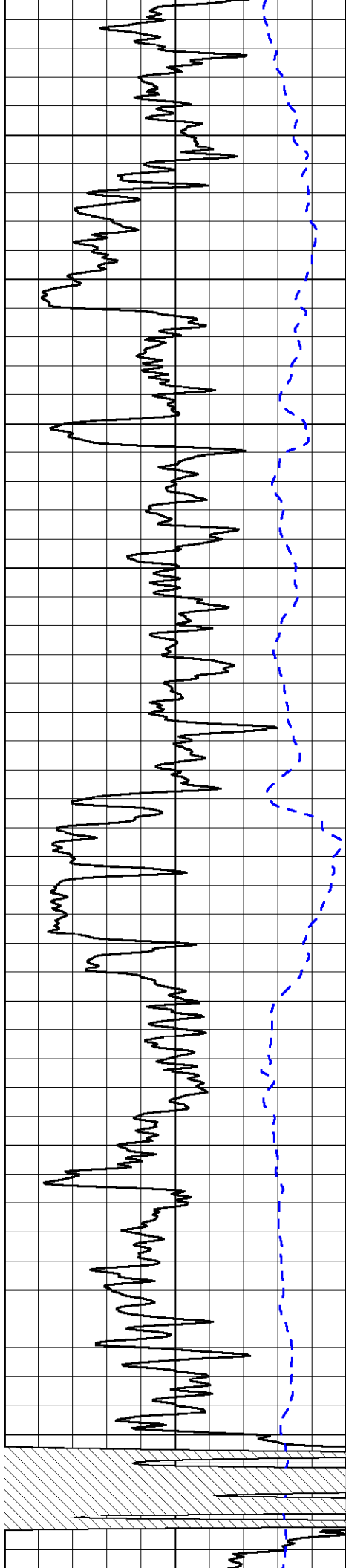
LSPD
(ft/min)

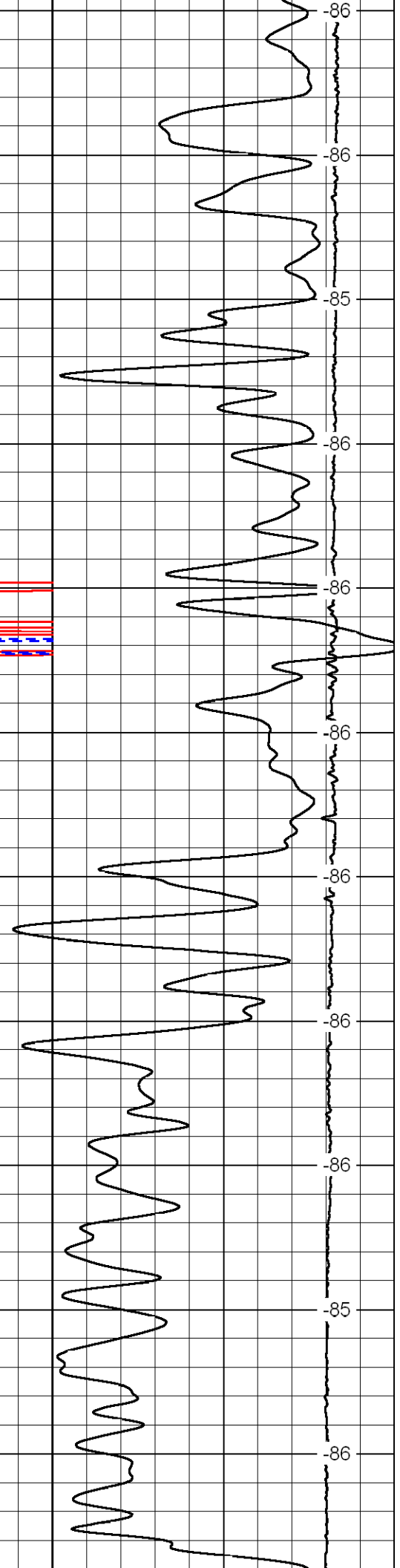
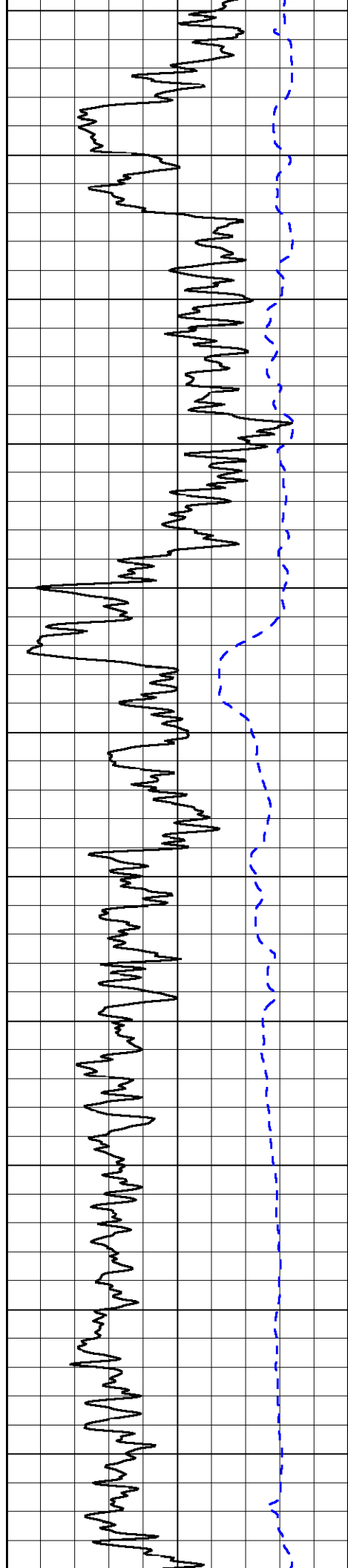
1000 Conductivity (mmho/m) 0

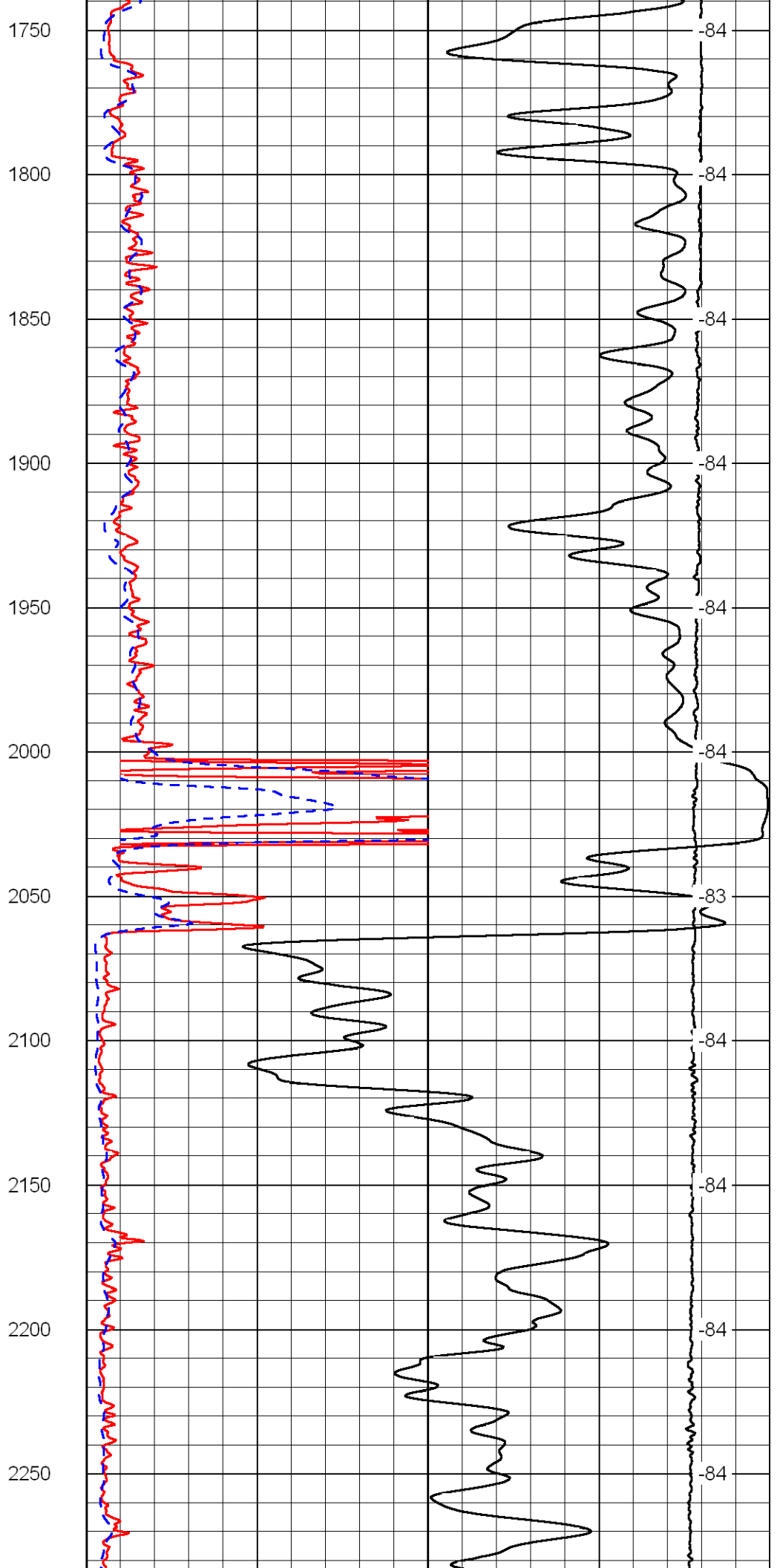
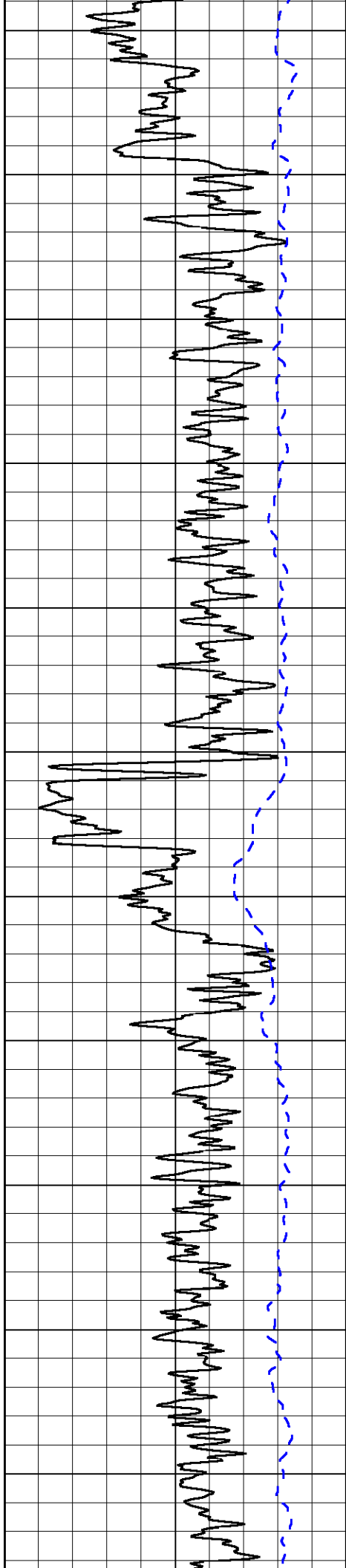
15000 Line Tension (lb) 0

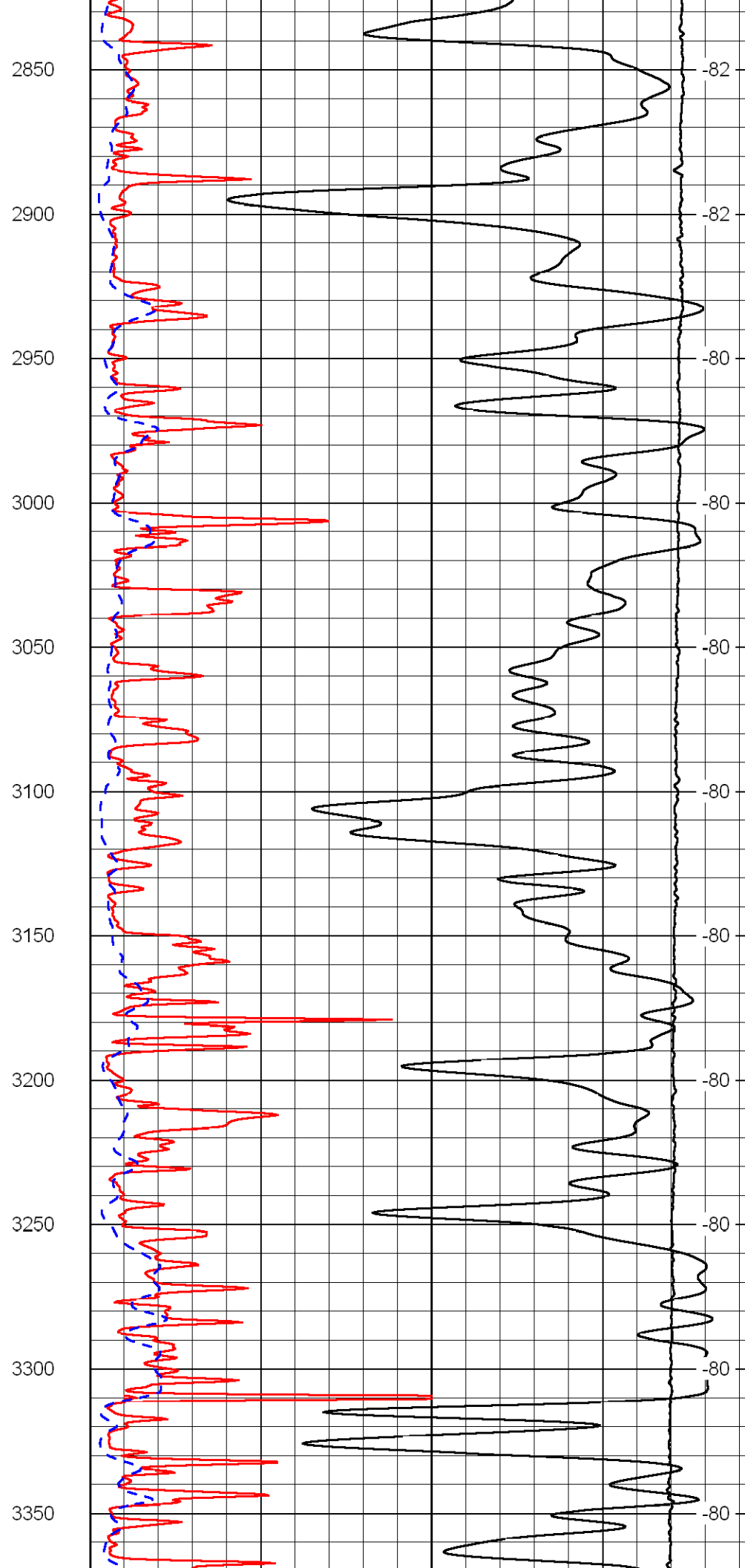
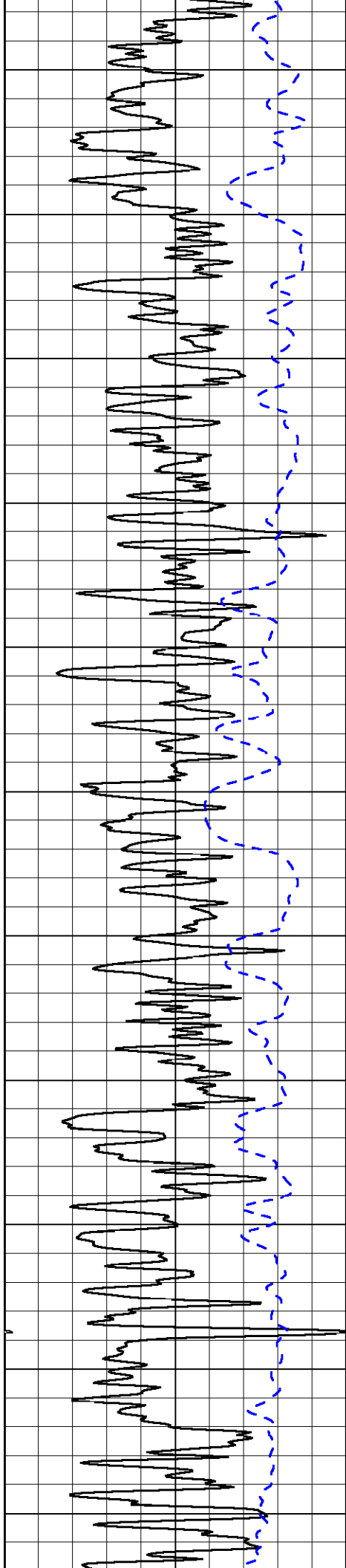
Shallow Resistivity
50 (Ohm-m) 500
50 Deep Resistivity (Ohm-m) 500

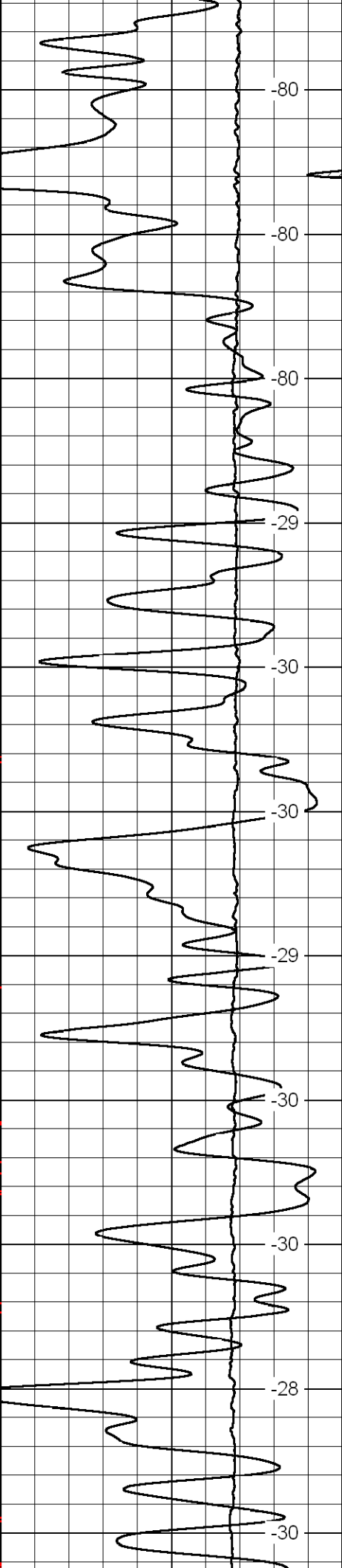
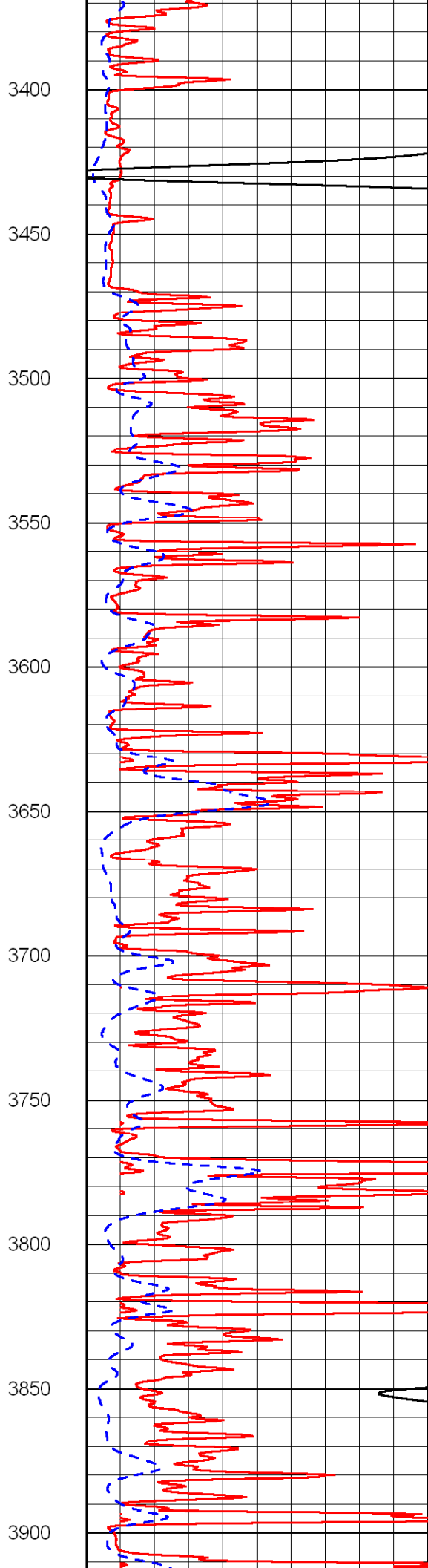
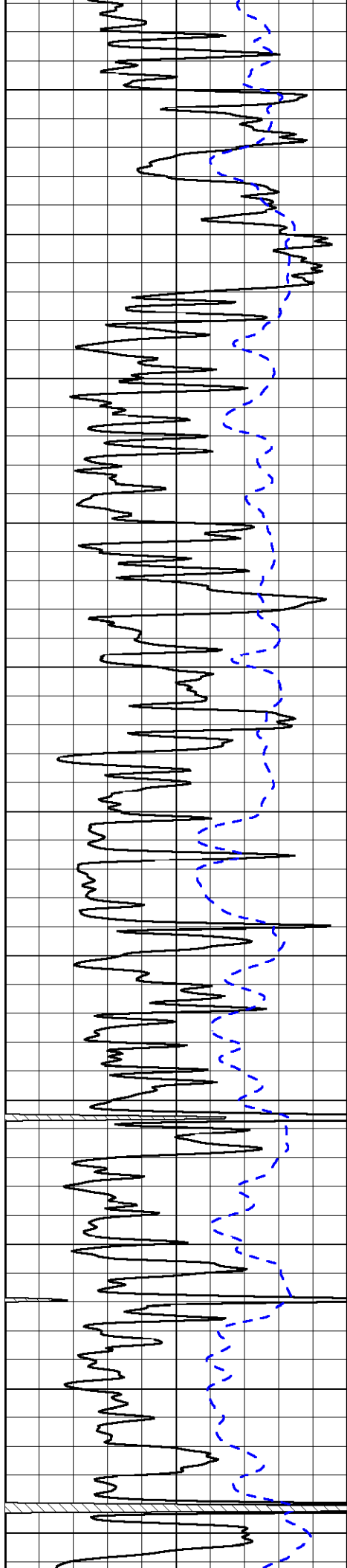


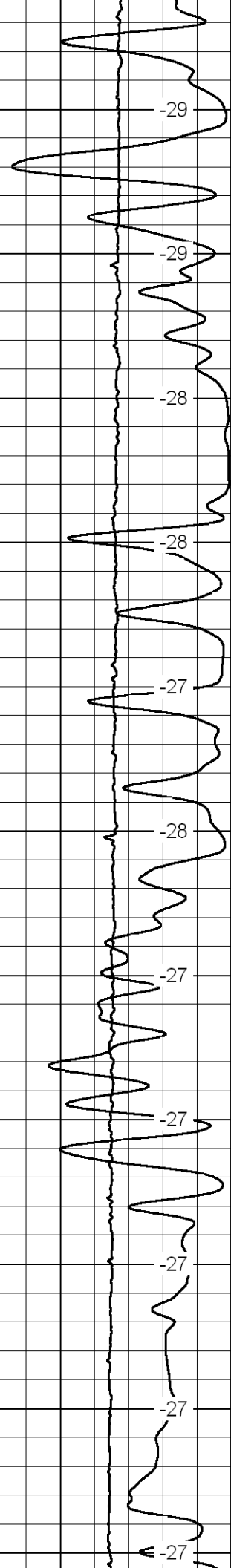
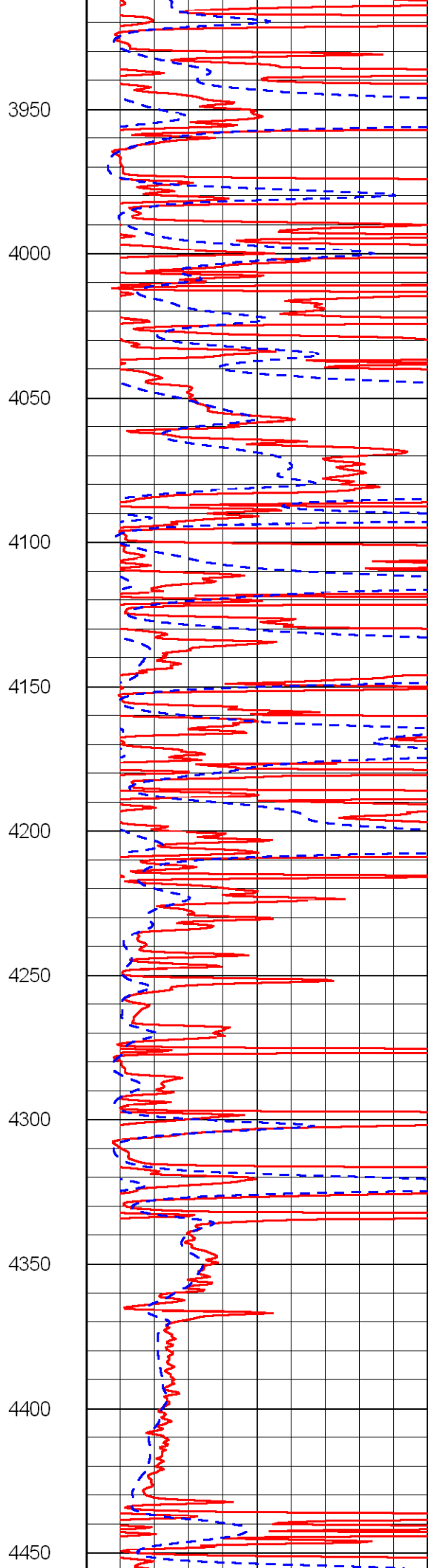
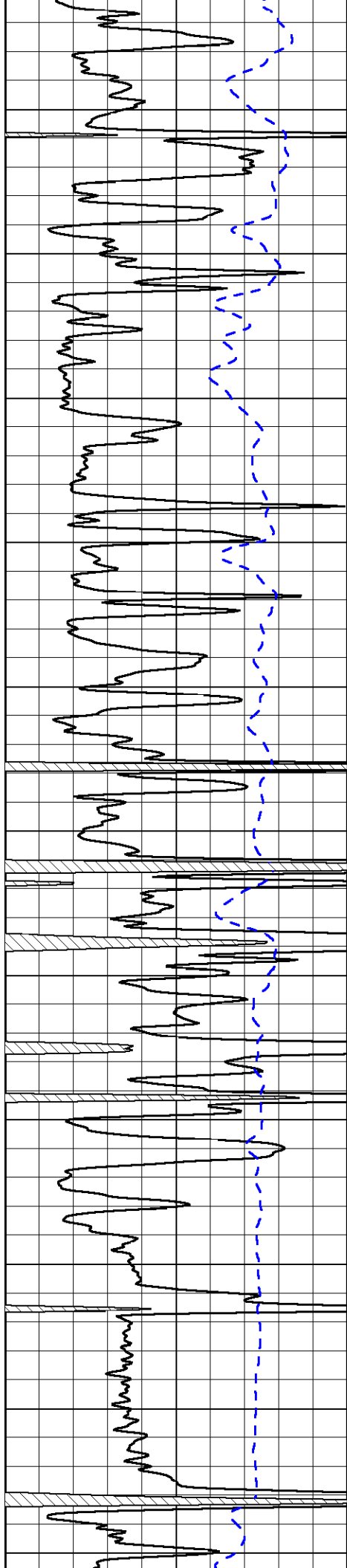


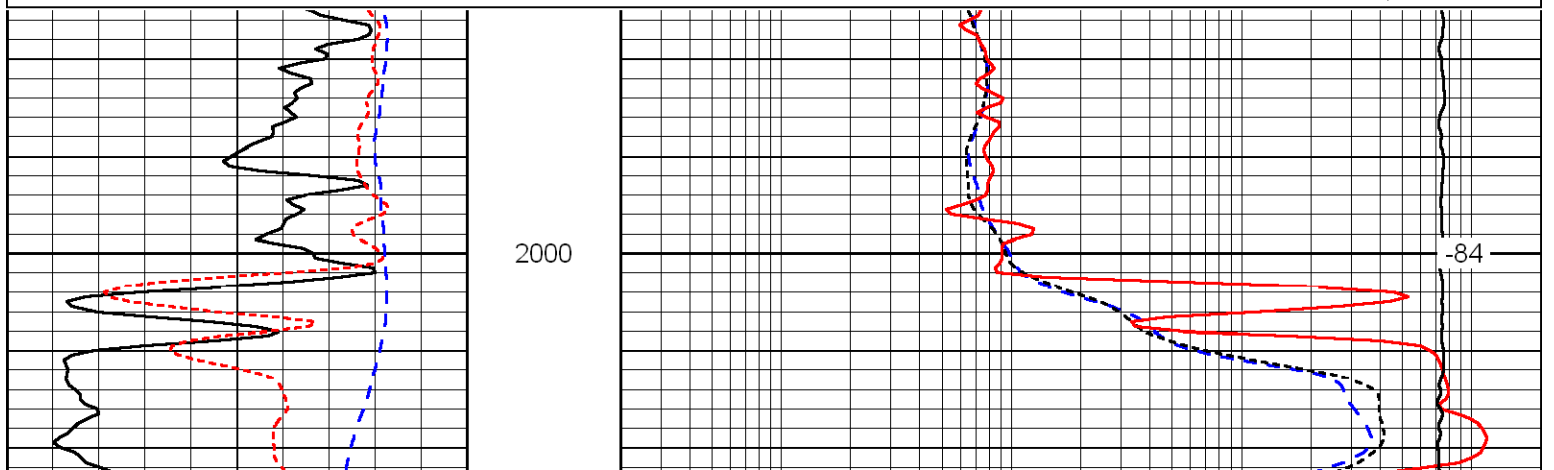
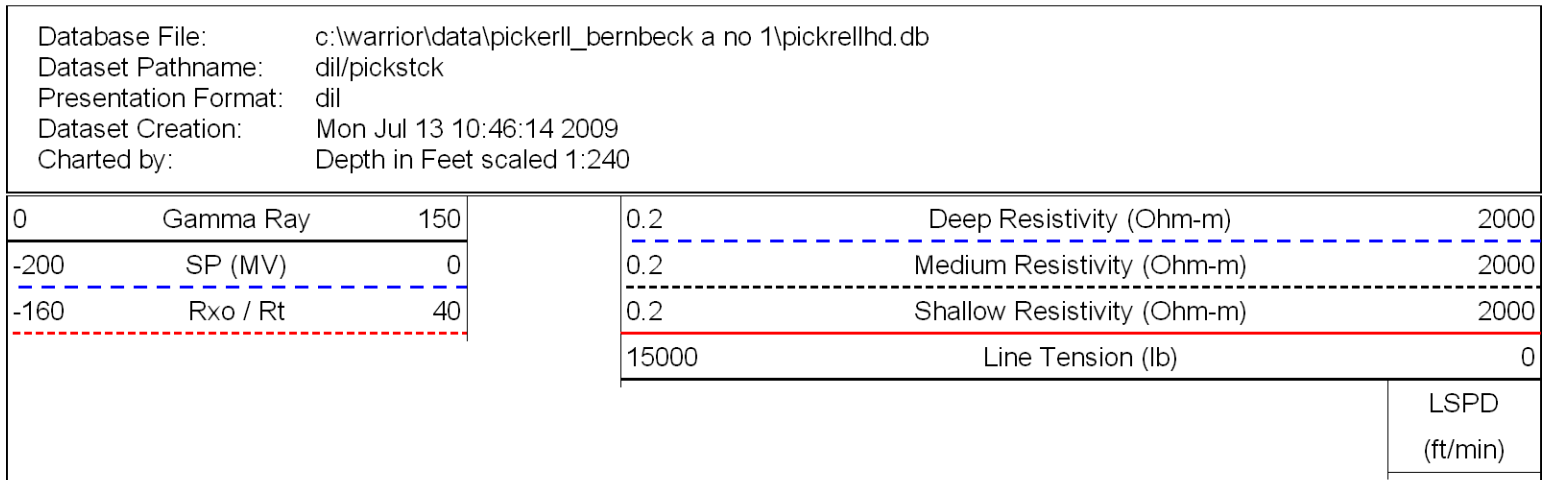
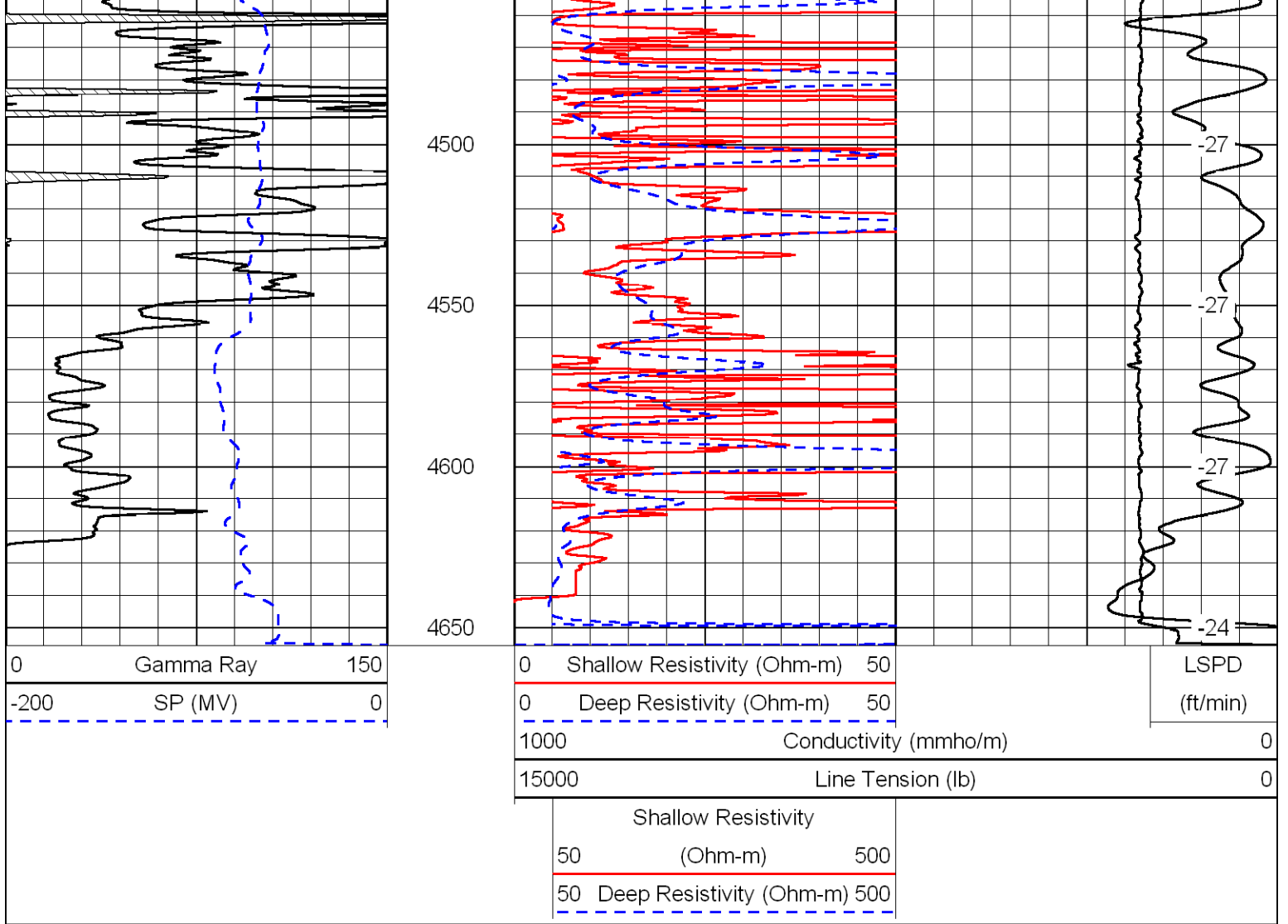


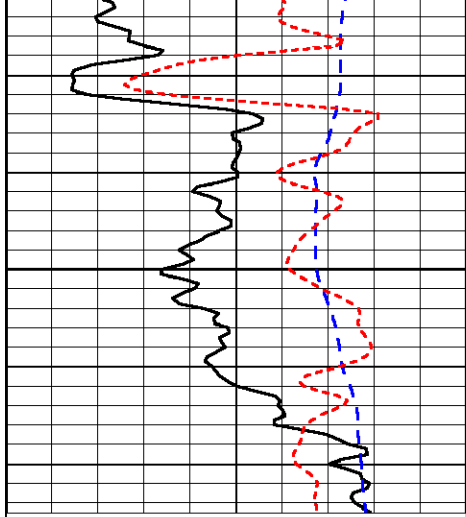






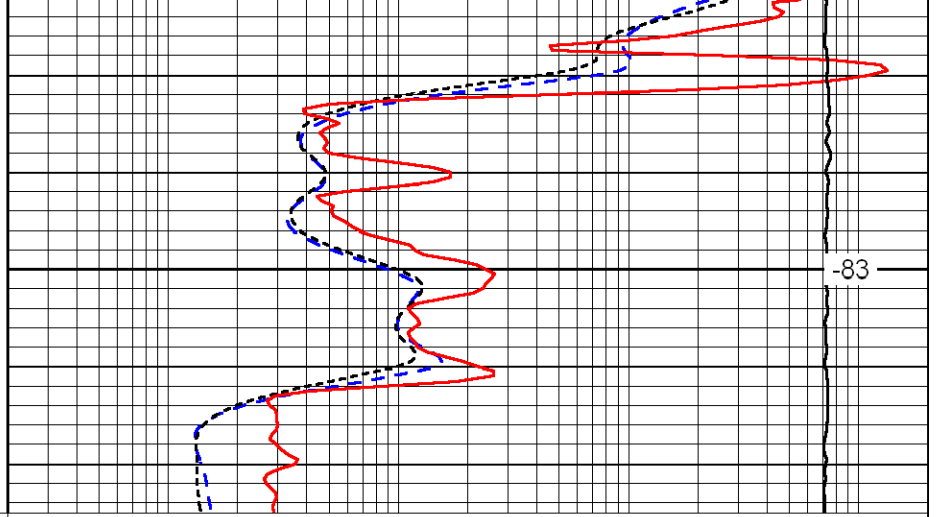






2050

0	Gamma Ray	150
-200	SP (MV)	0
-160	Rxo / Rt	40



-83

0.2	Deep Resistivity (Ohm-m)	2000
0.2	Medium Resistivity (Ohm-m)	2000
0.2	Shallow Resistivity (Ohm-m)	2000
15000	Line Tension (lb)	0

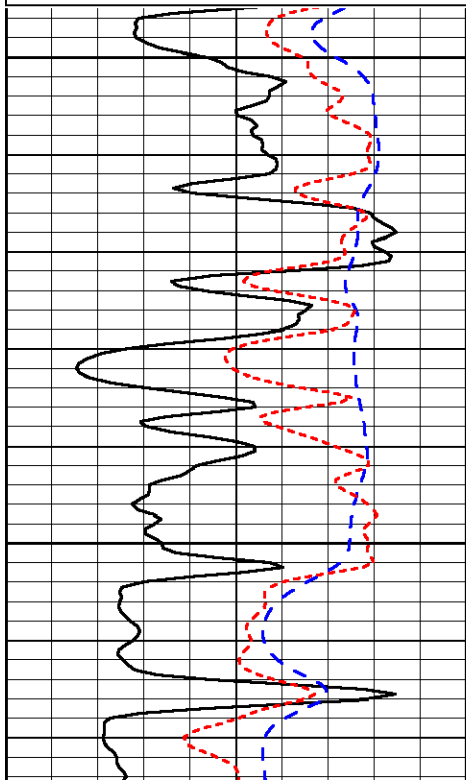
LSPD
(ft/min)

Database File: c:\warrior\data\pickerll_bernbeck a no 1\pickrellhd.db
 Dataset Pathname: dil/pickstck
 Presentation Format: dil
 Dataset Creation: Mon Jul 13 10:46:14 2009
 Charted by: Depth in Feet scaled 1:240

0	Gamma Ray	150
-200	SP (MV)	0
-160	Rxo / Rt	40

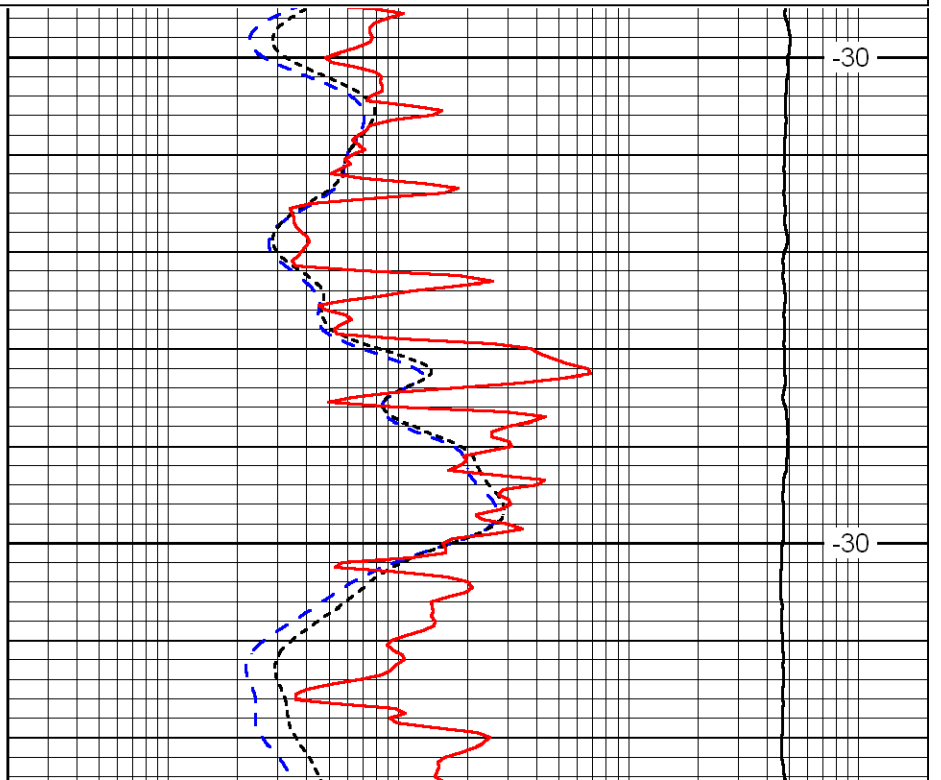
0.2	Deep Resistivity (Ohm-m)	2000
0.2	Medium Resistivity (Ohm-m)	2000
0.2	Shallow Resistivity (Ohm-m)	2000
15000	Line Tension (lb)	0

LSPD
(ft/min)



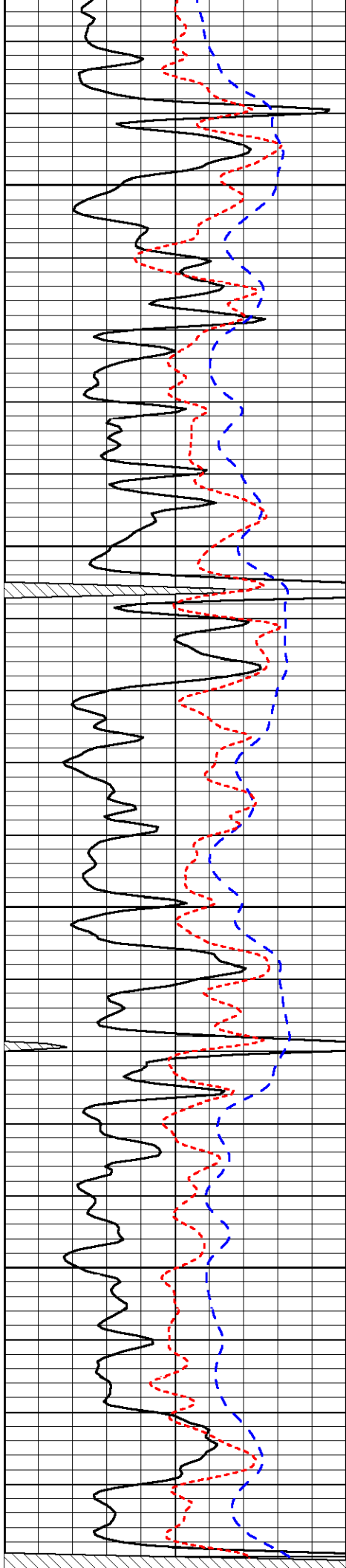
3600

3650



-30

-30

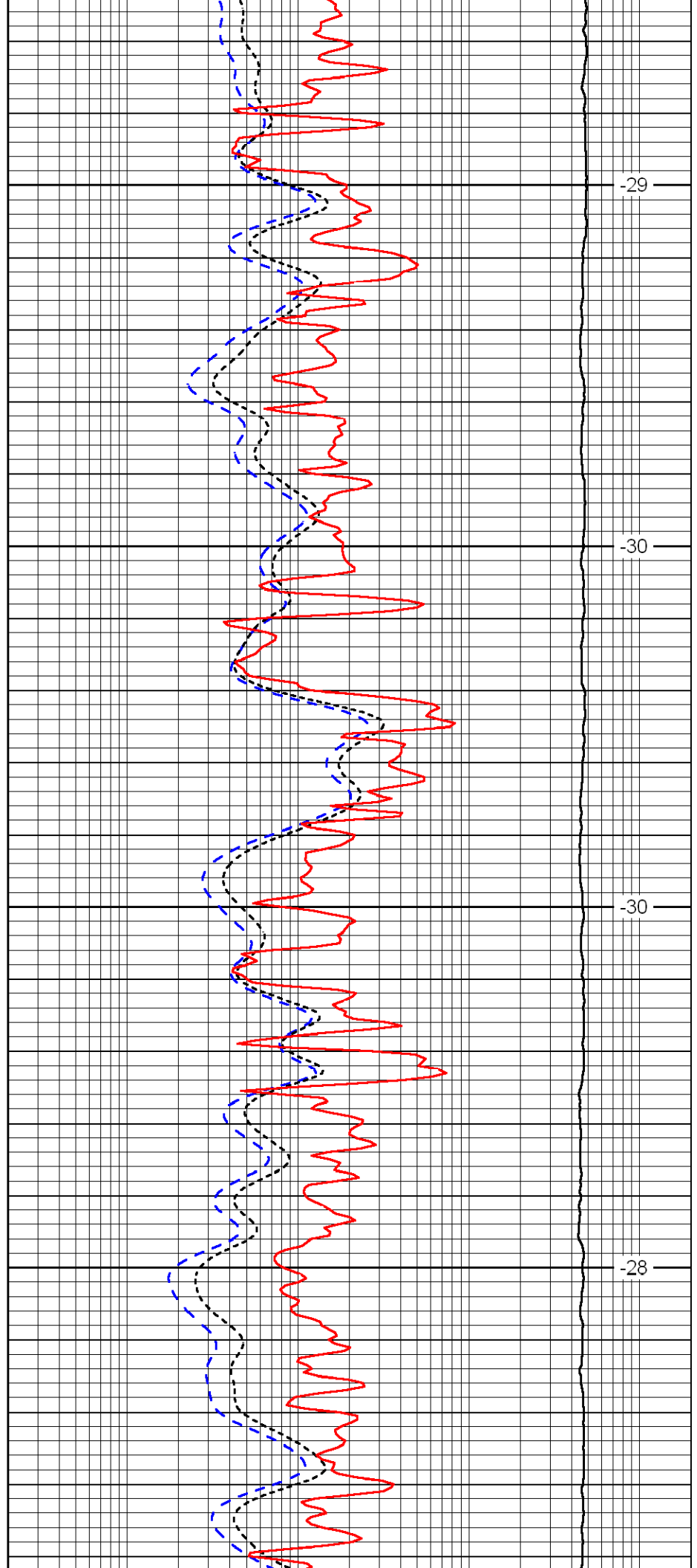


3700

3750

3800

3850

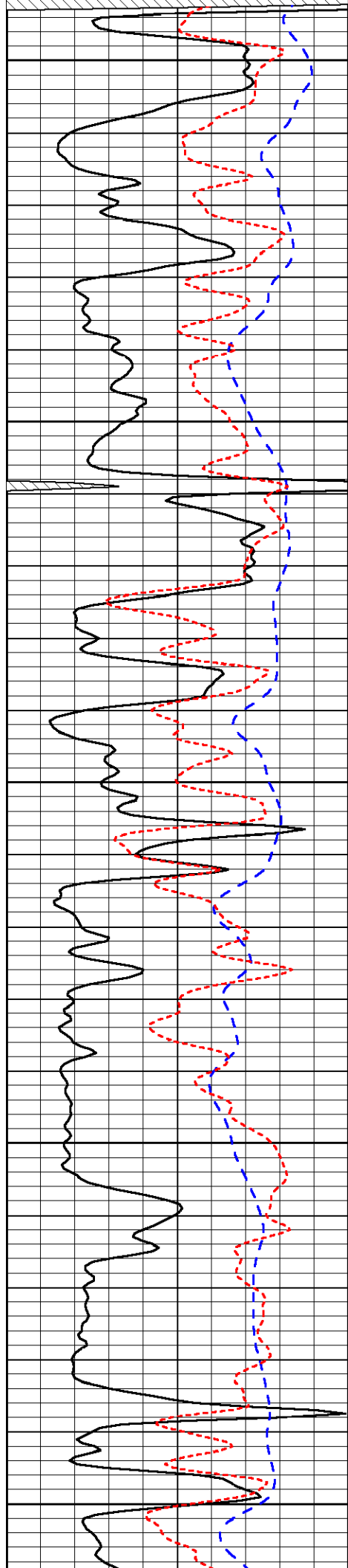


-29

-30

-30

-28



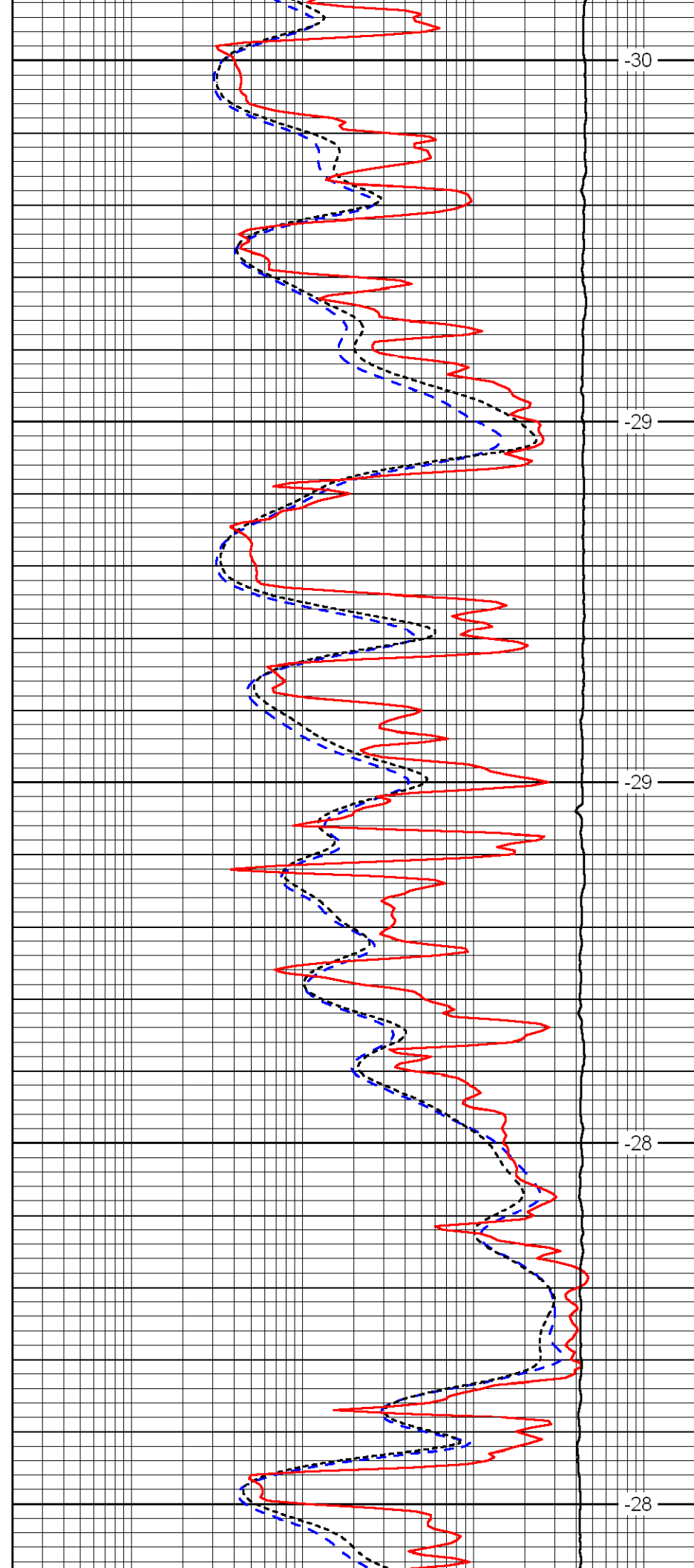
3900

3950

4000

4050

4100



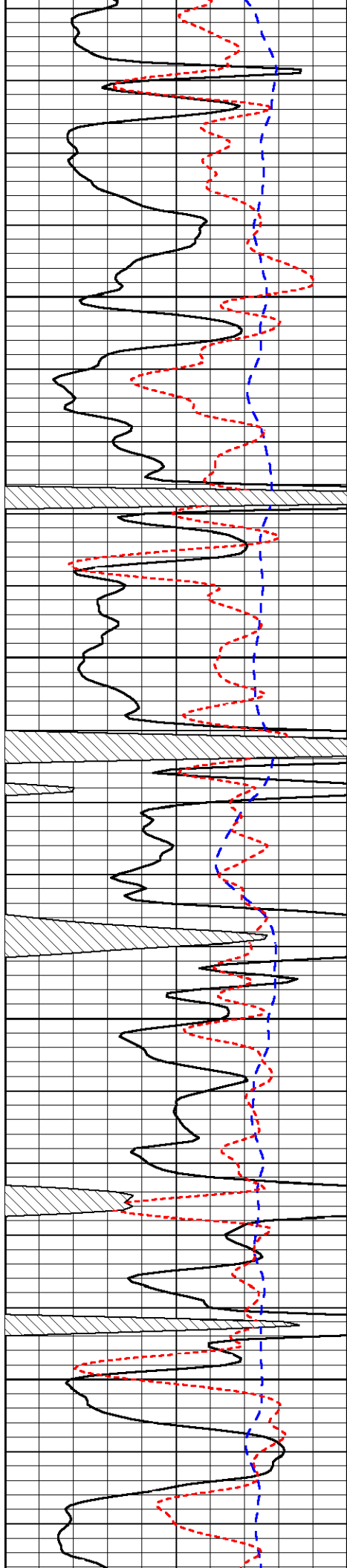
-30

-29

-29

-28

-28

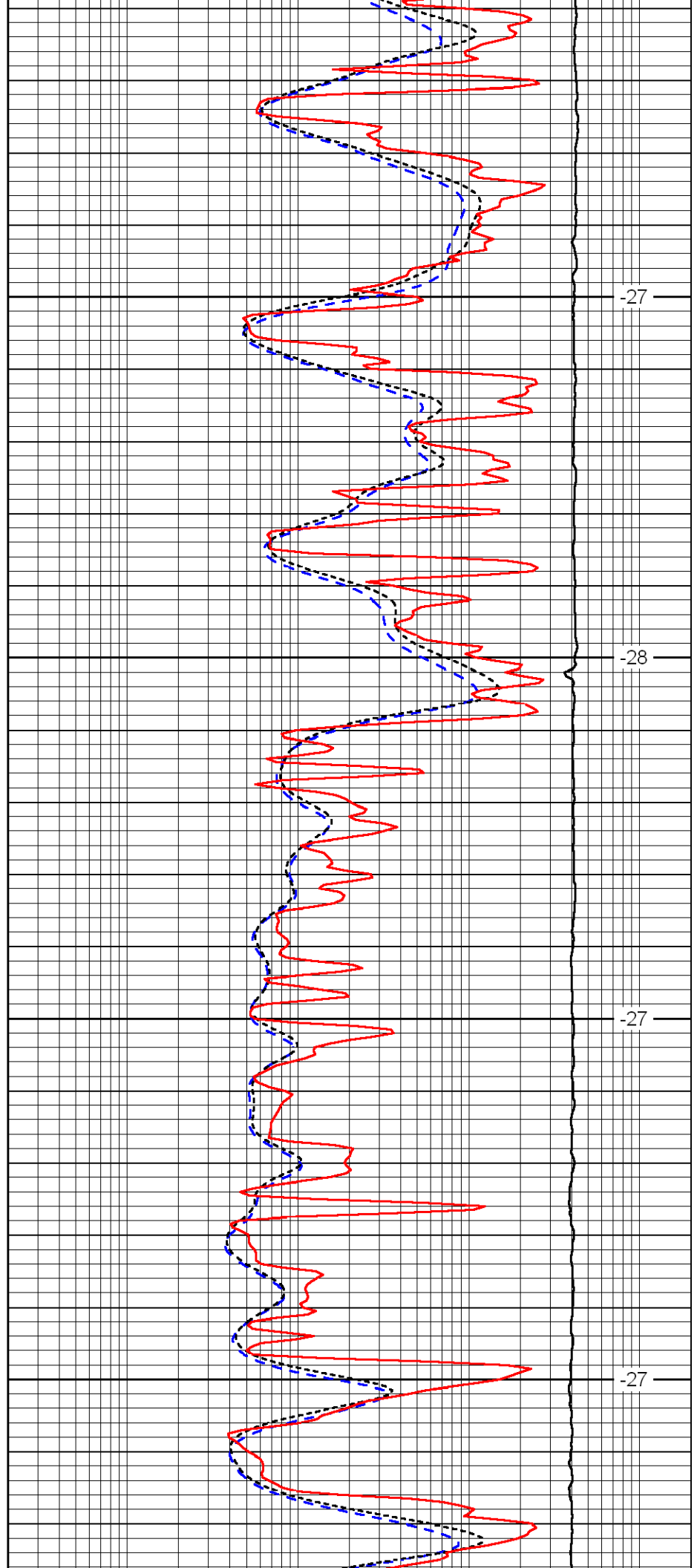


4150

4200

4250

4300

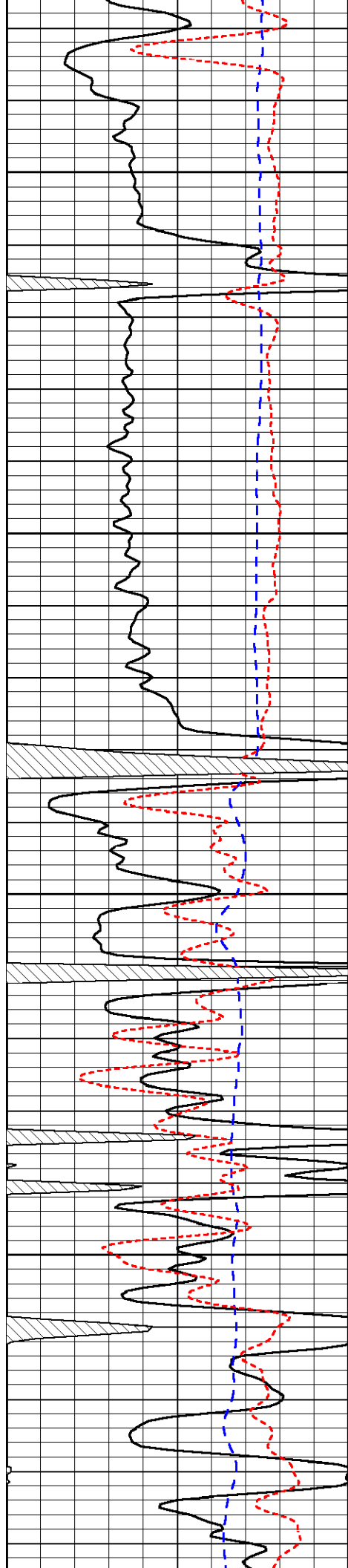


-27

-28

-27

-27

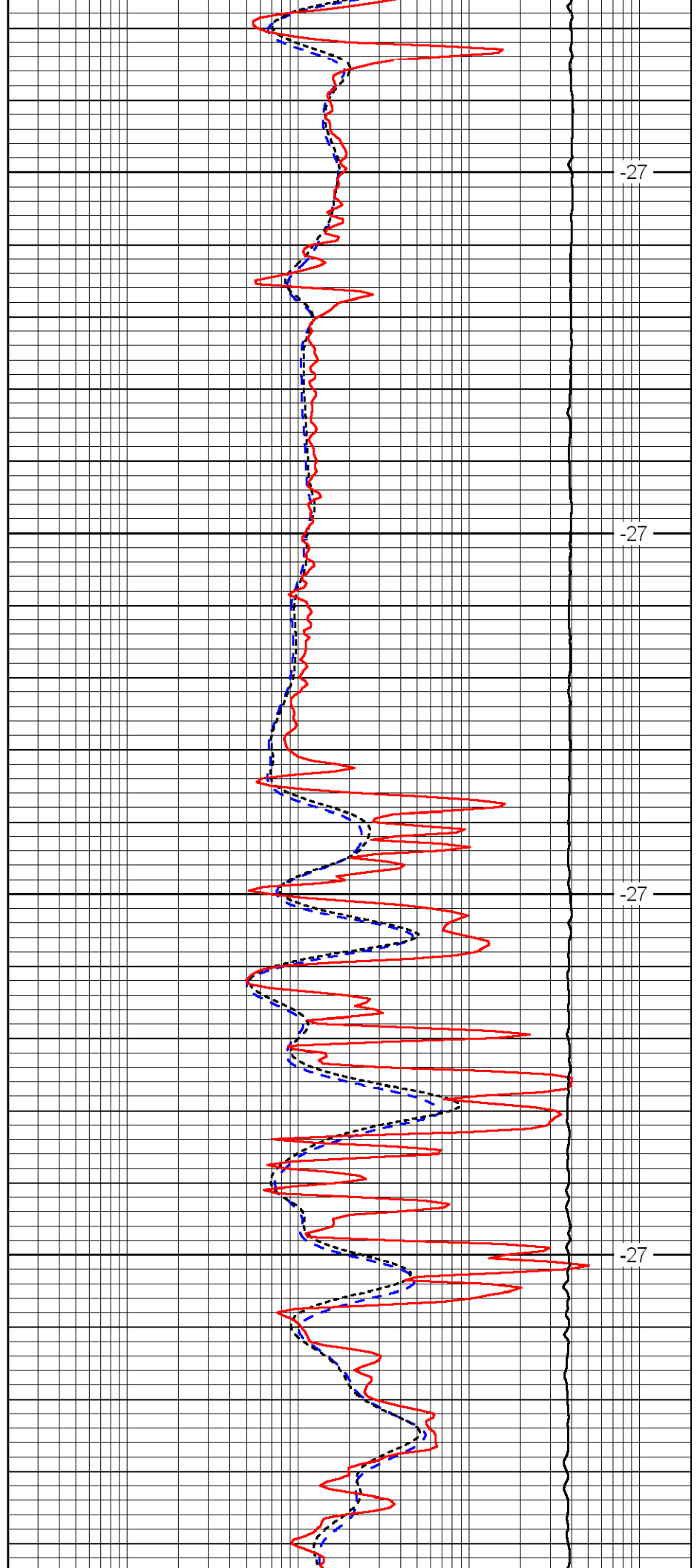


4350

4400

4450

4500

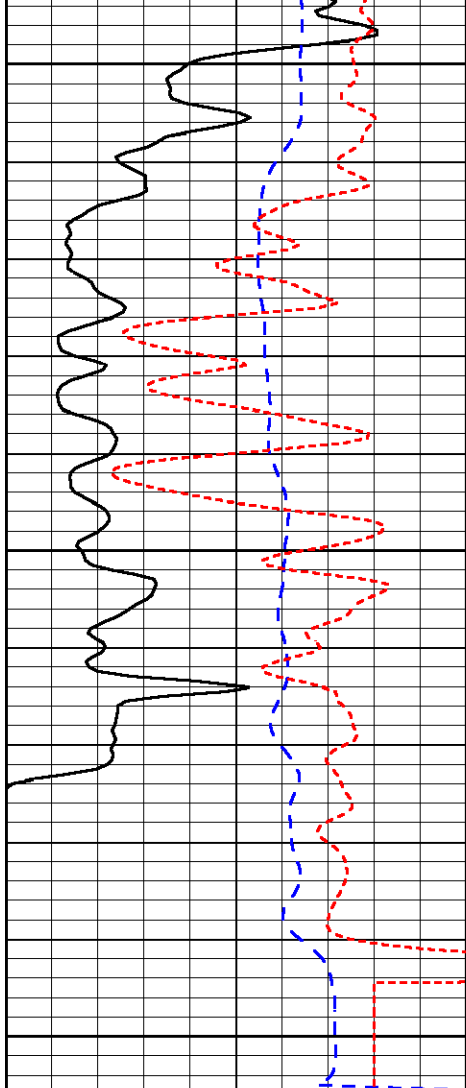


-27

-27

-27

-27

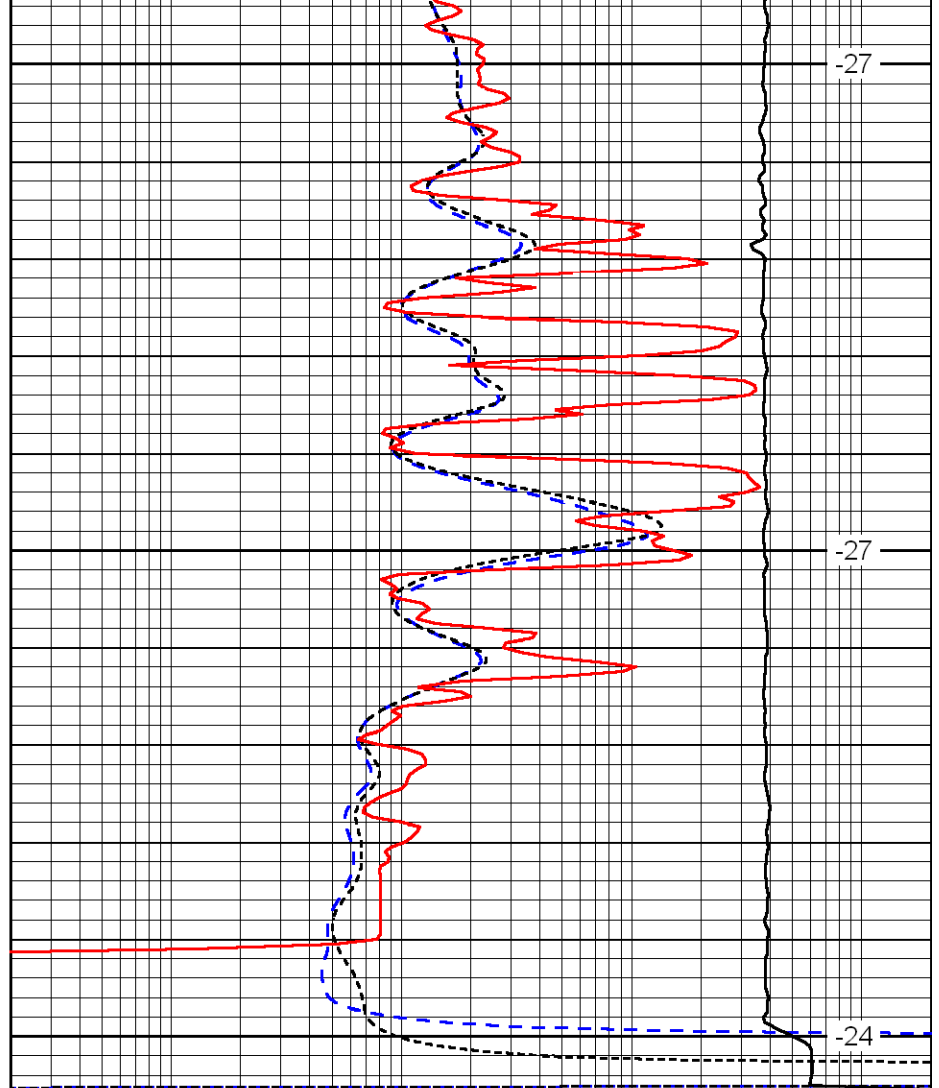


4550

4600

4650

0	Gamma Ray	150
-200	SP (MV)	0
-160	Rxo / Rt	40



-27

-27

-24

0.2	Deep Resistivity (Ohm-m)	2000
0.2	Medium Resistivity (Ohm-m)	2000
0.2	Shallow Resistivity (Ohm-m)	2000
15000	Line Tension (lb)	0

LSPD
(ft/min)