



Dual Compensated
Porosity Log

DIGITAL LOG (785) 625-3858

API No. 15-135-24,925-00-00

Company **Pickrell Drilling Company, Inc.**
 Well **Bernbeck "A" No 1**
 Field **Wildcat**
 County **Ness** State **Kansas**

Location **SW NE SW SE
700' FSL & 1910' FEL**

Sec: **26** Twp: **16S** Rge: **26W**

Other Services
DIL

Elevation
K.B. 2625
D.F. 2620
G.L. 2620

Permanent Datum Ground Level Elevation 2620
 Log Measured From Kelly Bushing 5 Ft. Above Perm. Datum
 Drilling Measured From Kelly Bushing

Date 07/13/2009

Run Number One
 Type Log CNL / CDL
 Depth Driller 4650
 Depth Logger 4649
 Bottom Logged Interval 4628
 Top Logged Interval 3600
 Type Fluid In Hole Chemical
 Salinity, PPM CL 5,000
 Density 9.5
 Level Full
 Max. Rec. Temp. F 125
 Operating Rig Time 4 Hours
 Equipment -- Location 17 Hays
 Recorded By Mike Garrison
 Witnessed By Sean Deenhan Kevin Davis

Run No	Bit	Borehole Record		Casing Record	
		From	To	From	To
1	12.25	00	255	8.625	24#
2	7.875	255	4650		

<<< Fold Here >>>

All interpretations are opinions based on inferences from electrical or other measurements and we cannot and do not guarantee the accuracy or correctness of any interpretation, and we shall not, except in the case of gross or willful negligence on our part, be liable or responsible for any loss, costs, damages, or expenses incurred or sustained by anyone resulting from any interpretation made by any of our officers, agents or employees. These interpretations are also subject to our general terms and conditions set out in our current Price Schedule.

Comments

Thank you for using Log-Tech, Inc.
(785) 625-3858

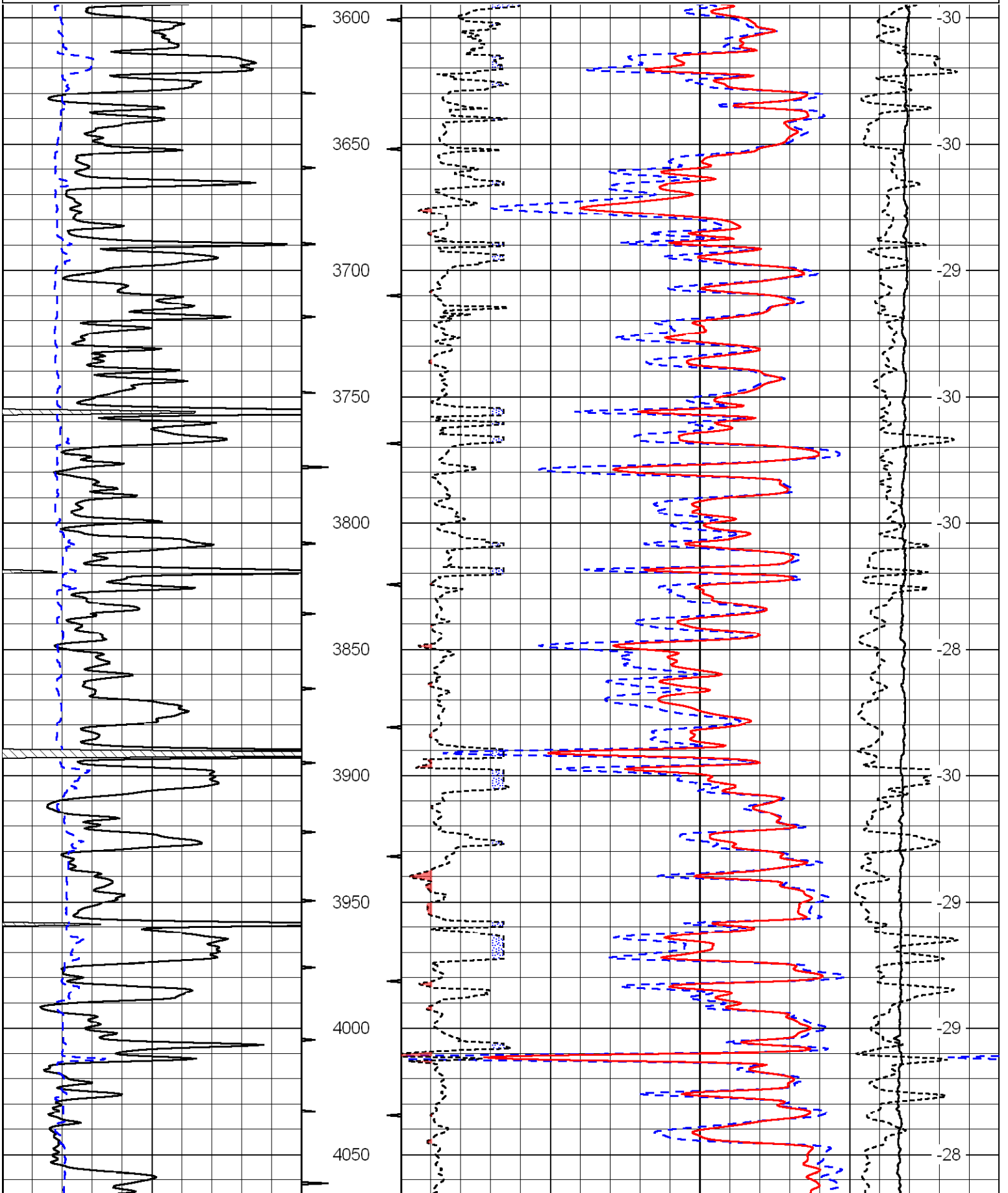
Utica, 1/2 East, 1 South on E Rd, West Into

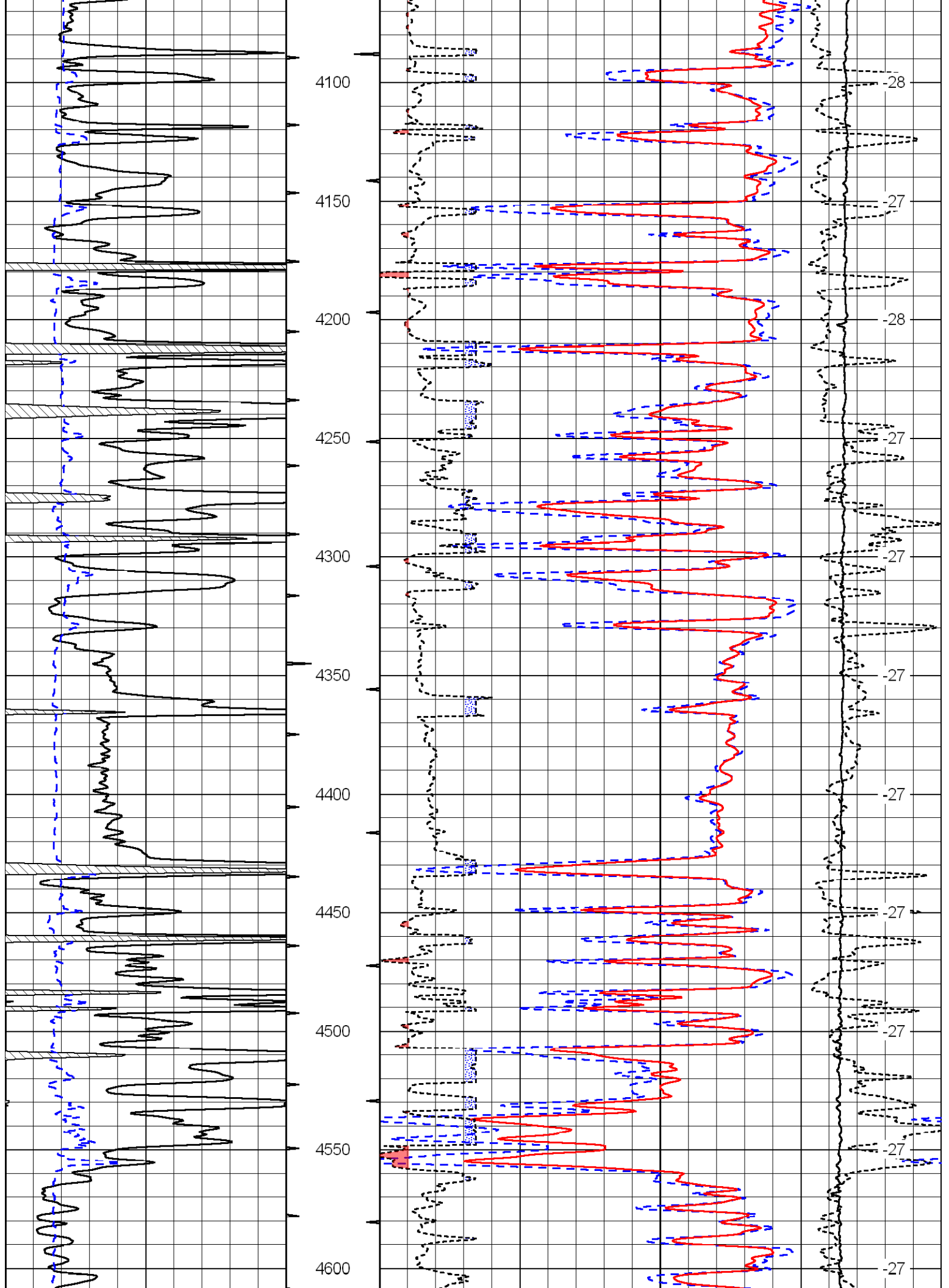
Database File: c:\warrior\data\pickrell_bernbeck a no 1\pickrellhd.db
 Dataset Pathname: dil/pickstck
 Presentation Format: cdl
 Dataset Creation: Mon Jul 13 10:46:14 2009
 Charted by: Depth in Feet scaled 1:600

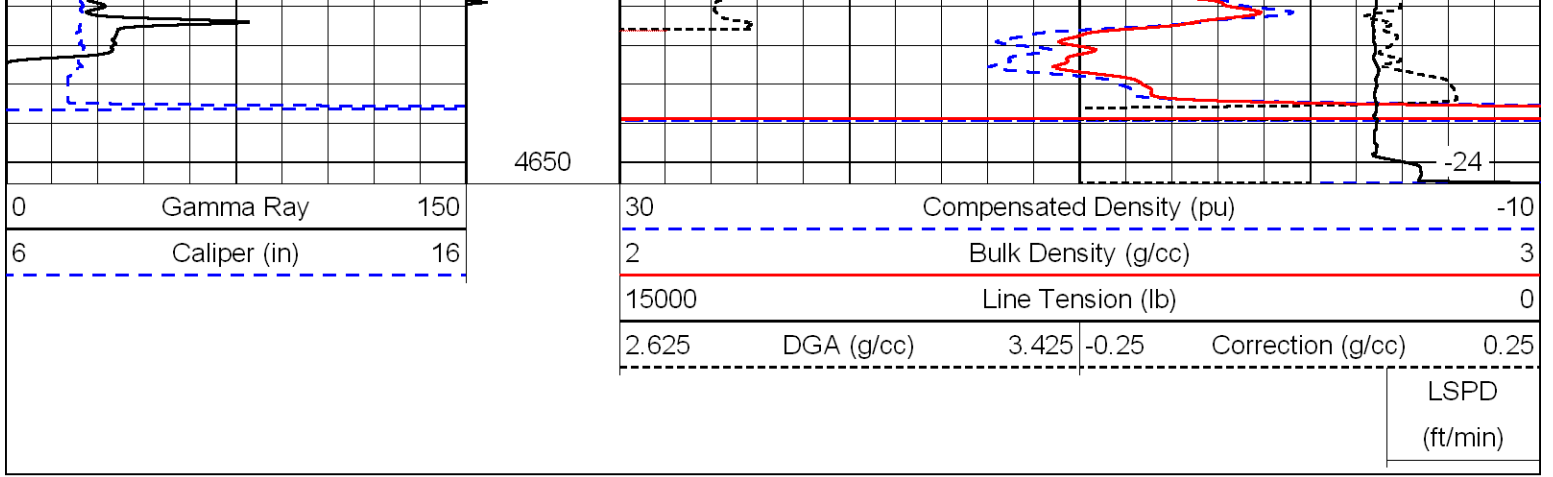
0	Gamma Ray	150
6	Caliper (in)	16

30	Compensated Density (pu)			-10	
2	Bulk Density (g/cc)			3	
15000	Line Tension (lb)			0	
2.625	DGA (g/cc)	3.425	-0.25	Correction (g/cc)	0.25

LSPD
(ft/min)







Database File: c:\warrior\data\pickrell_bernbeck a no 1\pickrellhd.db
 Dataset Pathname: dil/pickstck
 Presentation Format: cndlspec
 Dataset Creation: Mon Jul 13 10:46:14 2009
 Charted by: Depth in Feet scaled 1:240

