



**Borehole Compensated  
Sonic Log**

**DIGITAL LOG** (785) 625-3858

API No. 15-161-20,077-00-00	Company <b>CFA Oil Company</b>	Location <b>SW - SW - SW 330' FSL &amp; 330' FWL</b>	Other Services DIL CNL/CDL
	Well <b>Sue Duroche No. 2</b>	Elevation 1000	
	Field <b>Wildcat</b>	0 Ft. Above Perm. Datum	
	County <b>Riley</b>		
	State <b>Kansas</b>		
	Sec: <b>20</b>	Twp: <b>10 S</b>	Rge: <b>9 E</b>

Permanent Datum	Ground Level	
Log Measured From	Ground Level	
Drilling Measured From	Ground Level	
Date	6/26/2009	
Run Number	Three	
Type Log	BHC Sonic	
Depth Driller	1484	
Depth Logger	1032	
Bottom Logged Interval	1021	
Top Logged Interval	150	
Type Fluid In Hole	Chemical Mud	
Salinity, PPM CL	N/A	
Density	N/A	
Level	Full	
Max. Rec. Temp. F	86	
Operating Rig Time	3 Hours	
Equipment -- Location	15 Hays	
Recorded By	B. Becker	
Witnessed By	Don Clark	

Run No	Bit	Borehole Record		Casing Record	
		From	To	From	To
1	12.25	00	153	8.625	24#
2	7.875	153	1484		

<<< Fold Here >>>

All interpretations are opinions based on inferences from electrical or other measurements and we cannot and do not guarantee the accuracy or correctness of any interpretation, and we shall not, except in the case of gross or willful negligence on our part, be liable or responsible for any loss, costs, damages, or expenses incurred or sustained by anyone resulting from any interpretation made by any of our officers, agents or employees. These interpretations are also subject to our general terms and conditions set out in our current Price Schedule.

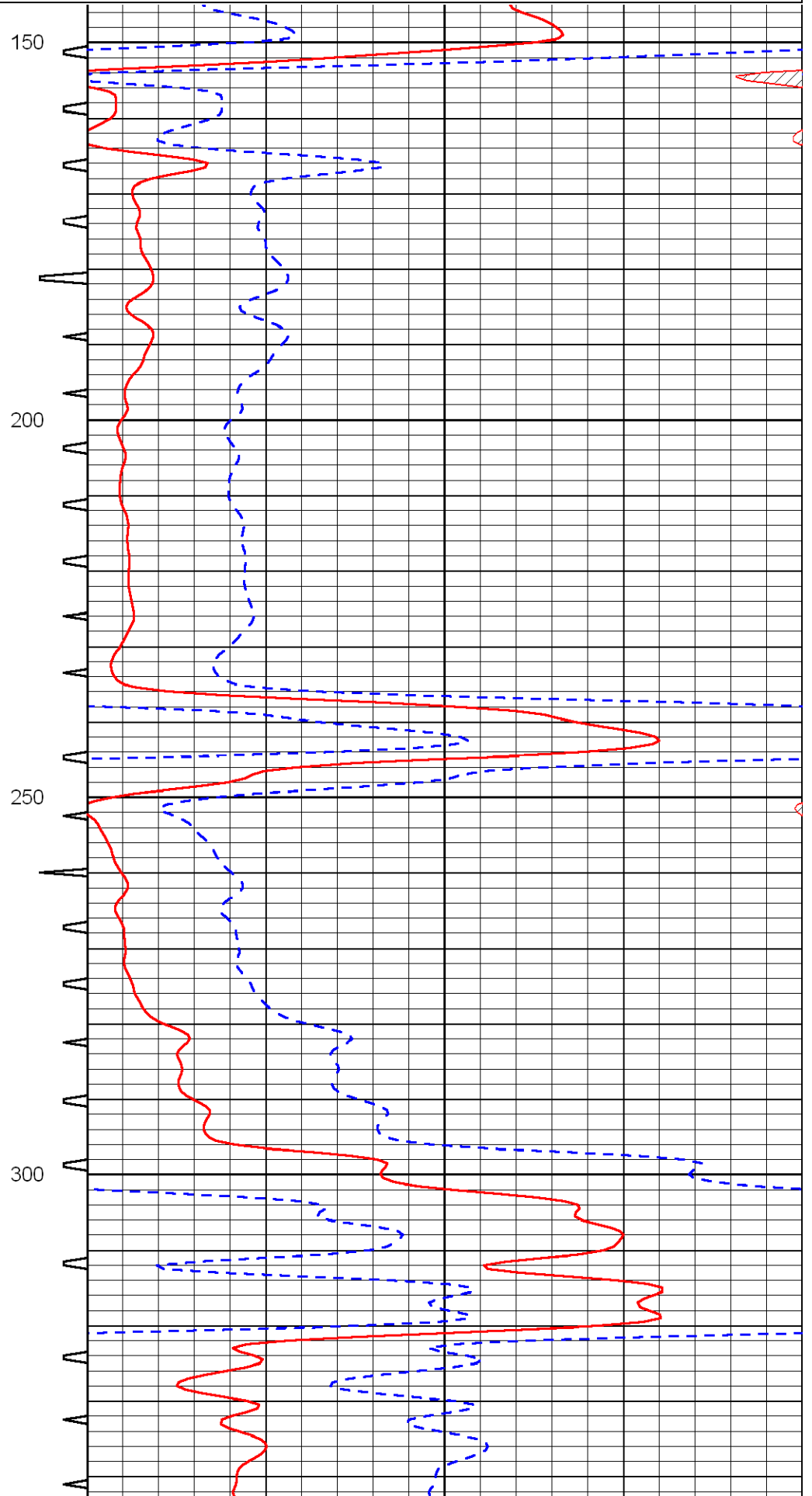
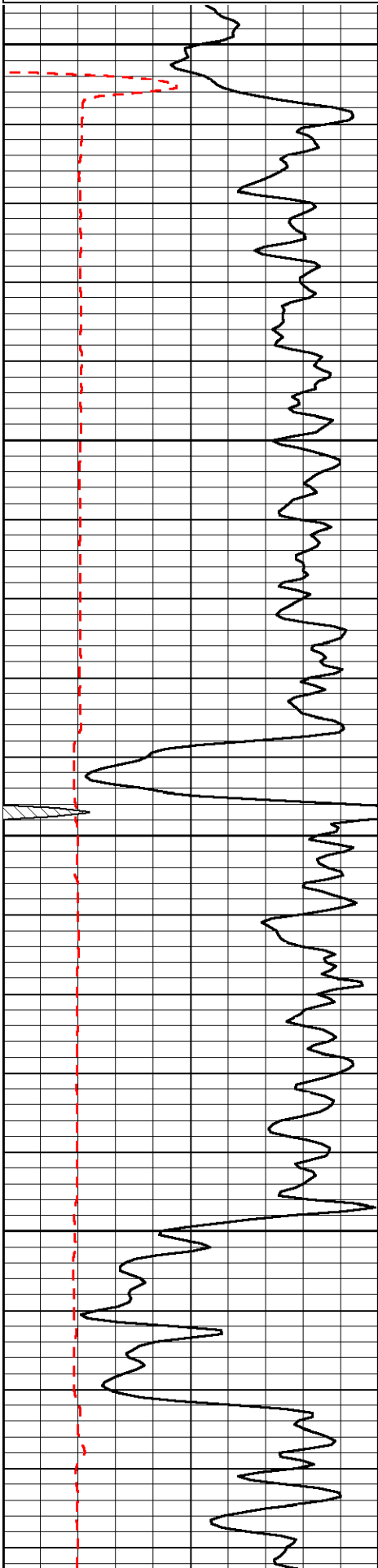
**Comments**

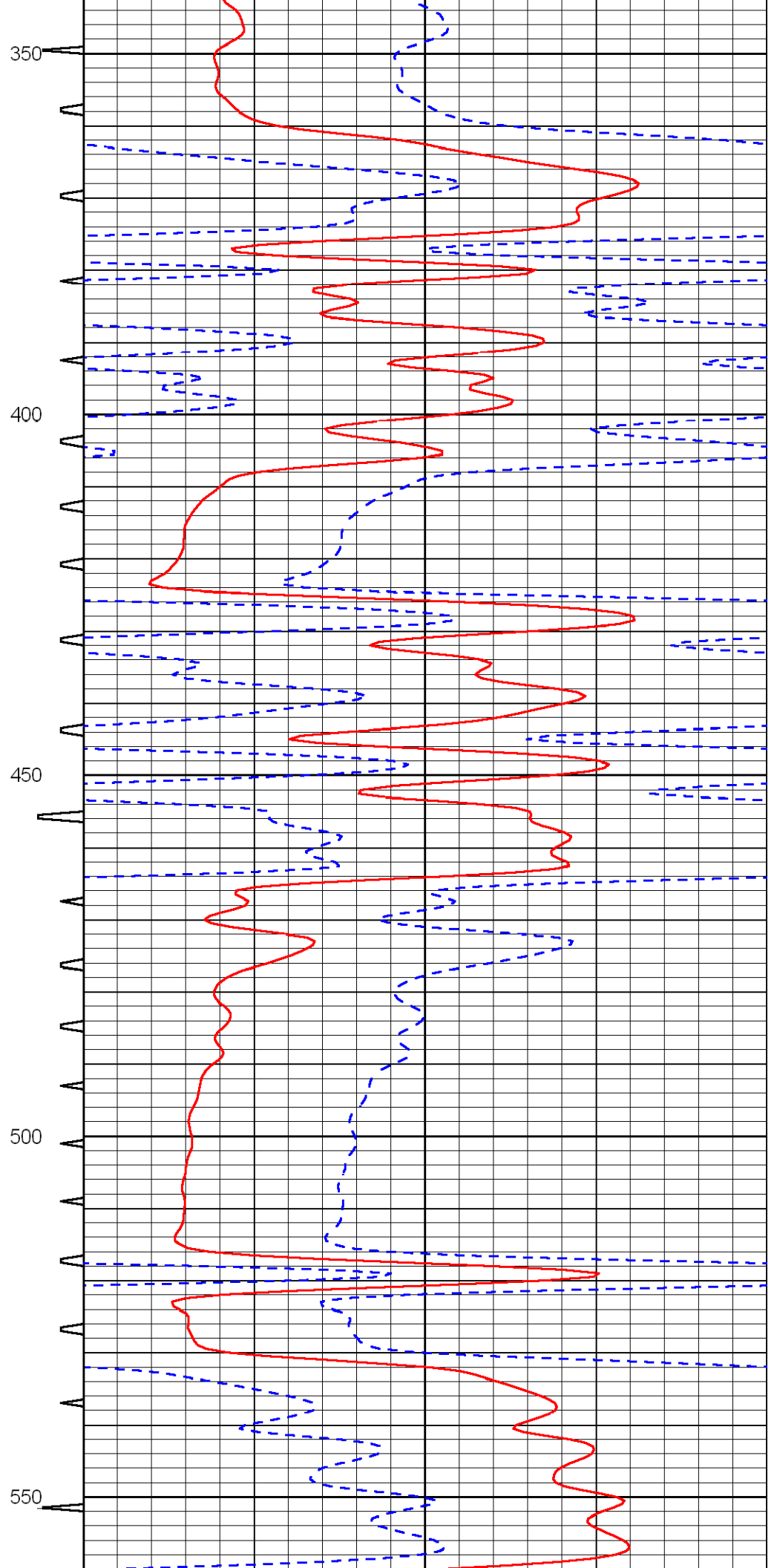
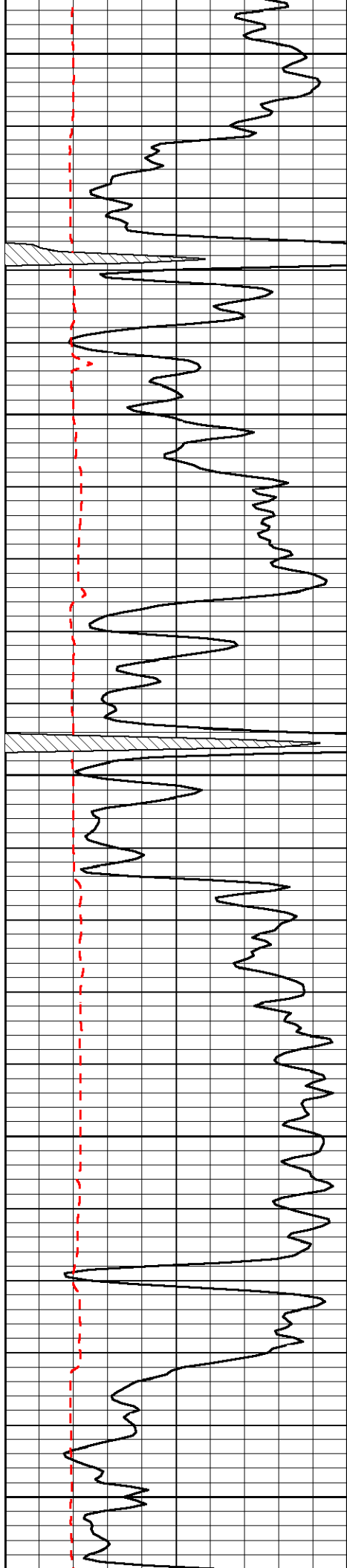
Thank you for using Log-Tech, Inc.  
(785) 625-3858

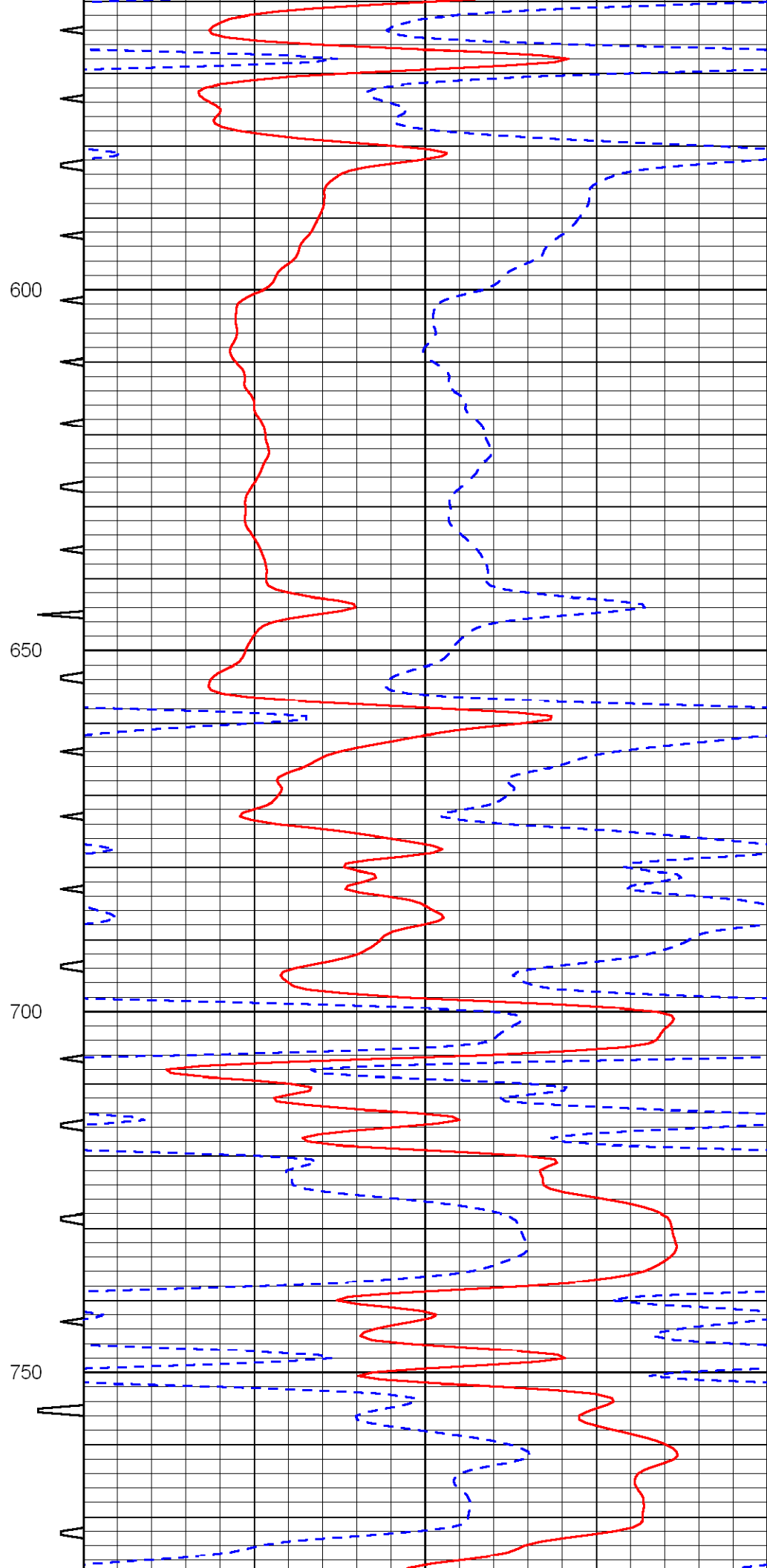
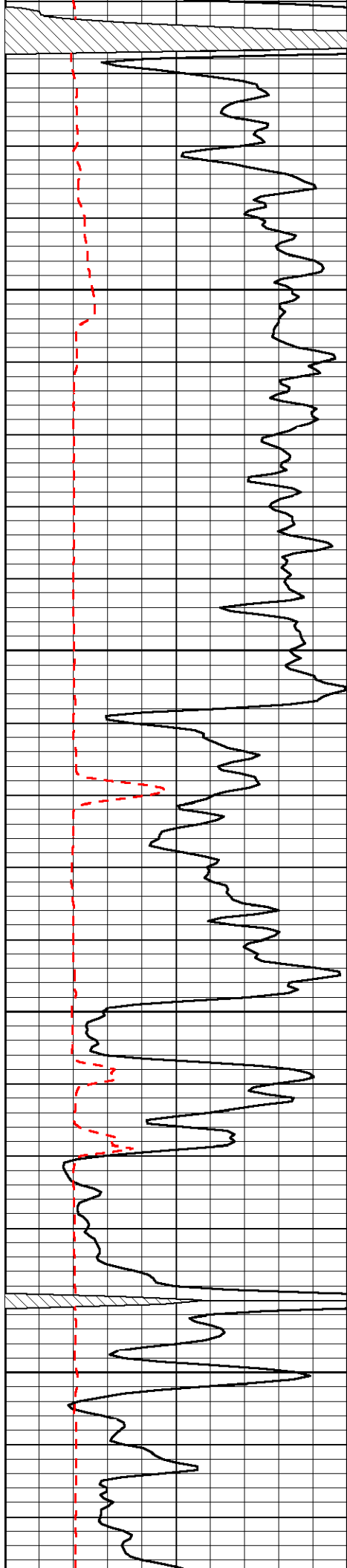
I-70 to Exit 313 (Hwy 177); North to 18 East; 5-1/2 East;  
North into location

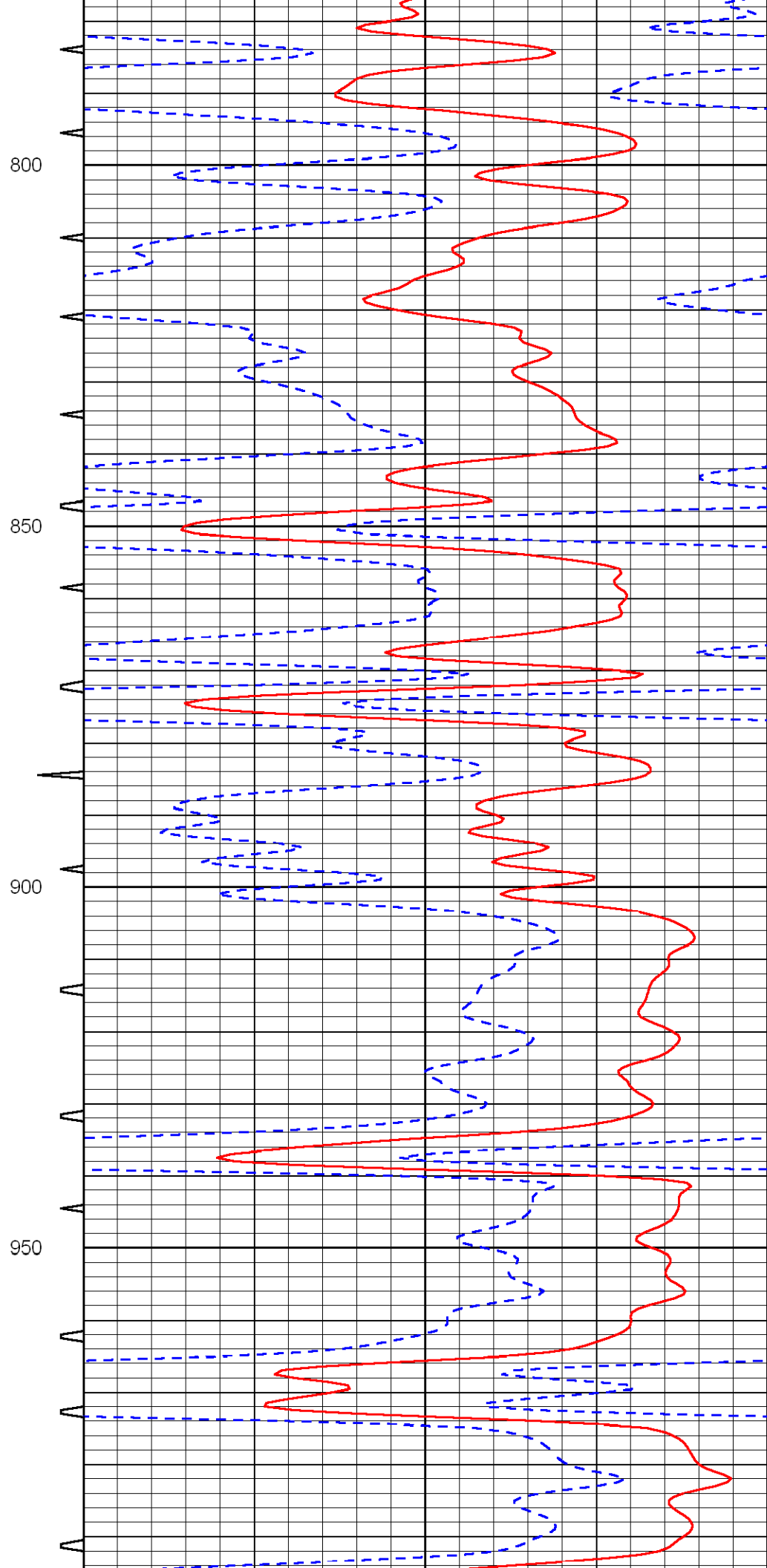
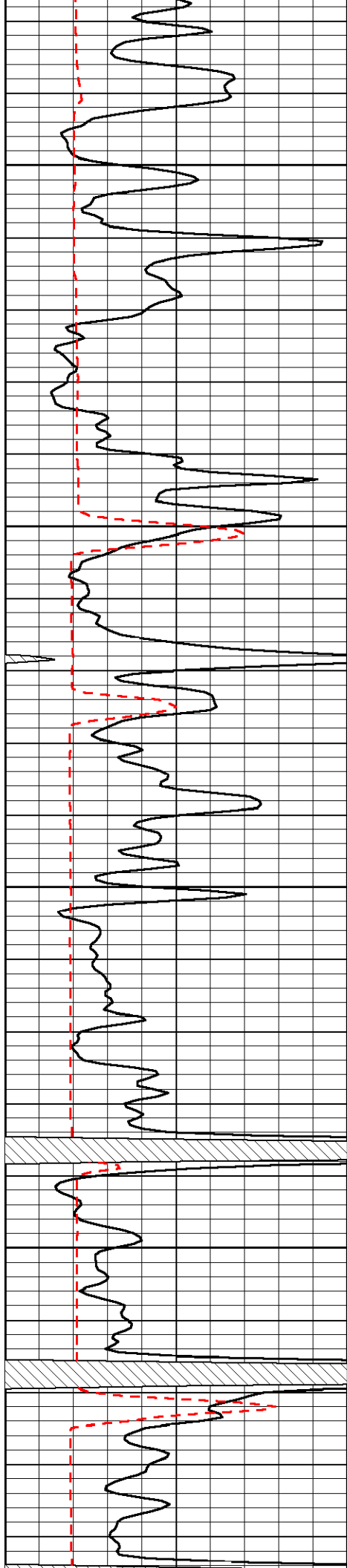
Database File: c:\warrior\data\cfa oil\_sue duroche no. 2\cfahd.db  
 Dataset Pathname: DIL/stack  
 Presentation Format: sonic  
 Dataset Creation: Sat Jun 27 09:06:07 2009  
 Charted by: Depth in Feet scaled 1:240

0	Gamma Ray	150	Sonic Int	140	Delta Time (usec/ft) (usec/ft)	40	
150	Gamma Ray	300	5 (msec)	0	30	SPOR (pu)	-10
6	Caliper (in)	16					







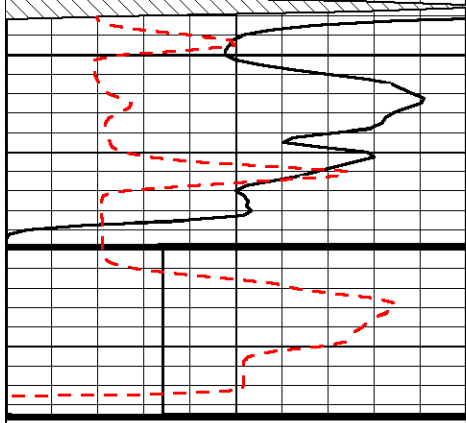


800

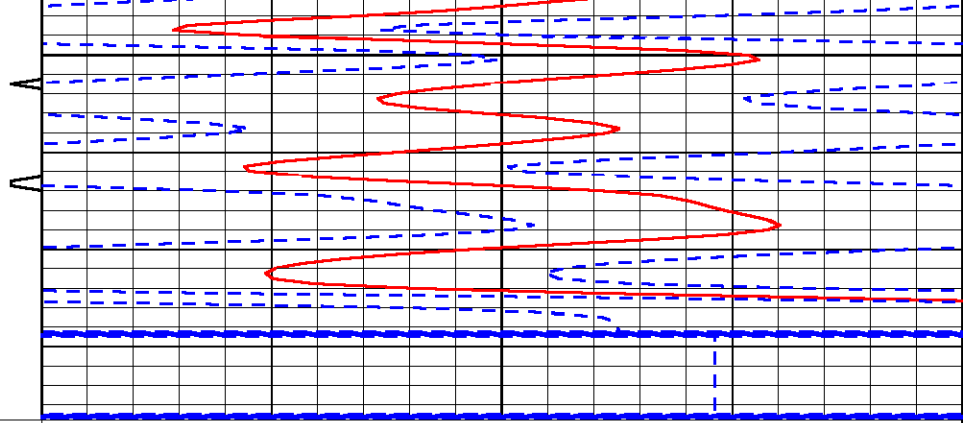
850

900

950



1000



0	Gamma Ray	150	Sonic Int	140	Delta Time (usec/ft) (usec/ft)	40
150	Gamma Ray	300	5 (msec) 0	30	SPOR (pu)	-10
6	Caliper (in)	16				