



Dual Induction Log

DIGITAL LOG (785) 625-3858

API No.	15-161-20,077-00-00	
Company	CFA Oil Company	
Well	Sue Duroche No. 2	
Field	Wildcat	
County	Riley	State
		Kansas
Location	SW - SW - SW 330' FSL & 330' FWL	
Sec: 20	Twp: 10 S	Rge: 9 E
Permanent Datum	Ground Level	Elevation 1000
Log Measured From	Ground Level	0 Ft. Above Perm. Datum
Drilling Measured From	Ground Level	K.B. N/A D.F. 1000 G.L. 1000

Date	6/26/2009
Run Number	One
Depth Driller	1484
Depth Logger	1032
Bottom Logged Interval	1031
Top Log Interval	150
Casing Driller	8.625 @ 153
Casing Logger	153
Bit Size	7.875
Type Fluid in Hole	Chemical Mud
Salinity, ppm CL	N/A
Density / Viscosity	N/A
pH / Fluid Loss	N/A
Source of Sample	Flowline
Rm @ Meas. Temp	5.20 @ 80
Rmf @ Meas. Temp	3.90 @ 80
Rmc @ Meas. Temp	7.02 @ 80
Source of Rmf / Rmc	Charts
Rm @ BHT	4.82 @ 86
Operating Rig Time	3 Hours
Max Rec. Temp. F	86
Equipment Number	15
Location	Hays
Recorded By	B. Becker
Witnessed By	Don Clark

<<< Fold Here >>>

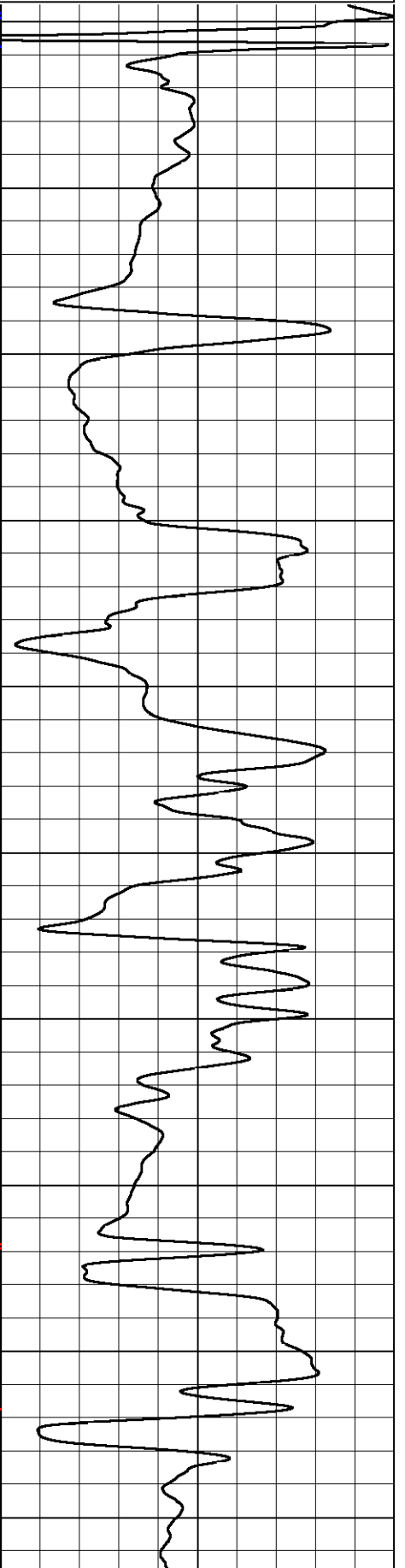
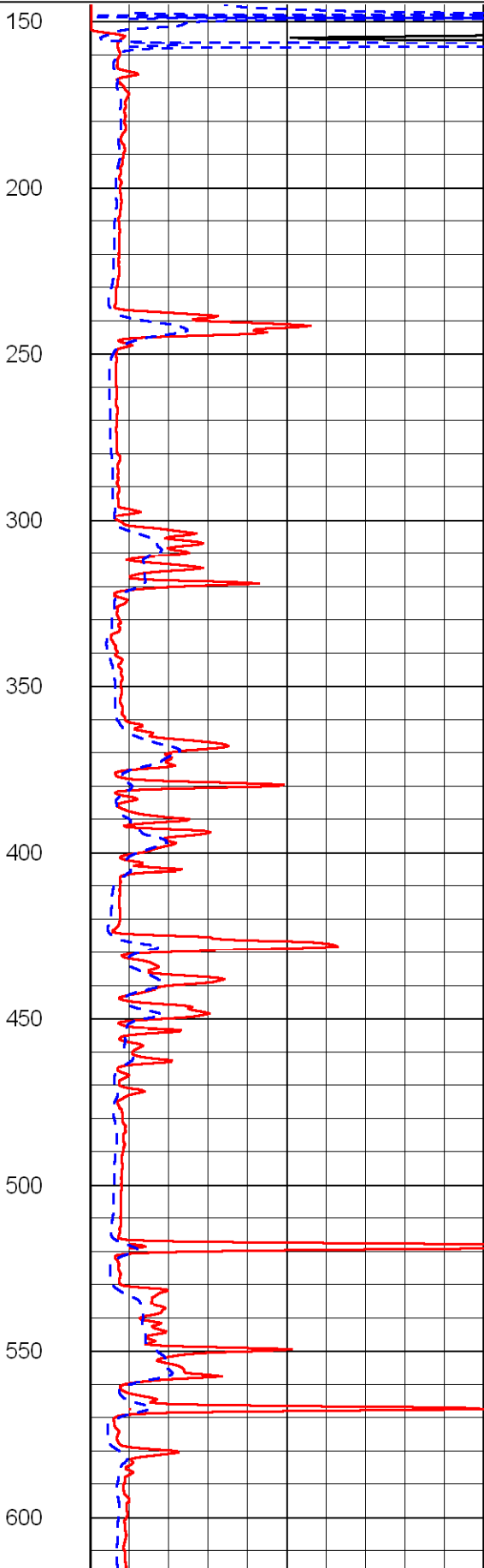
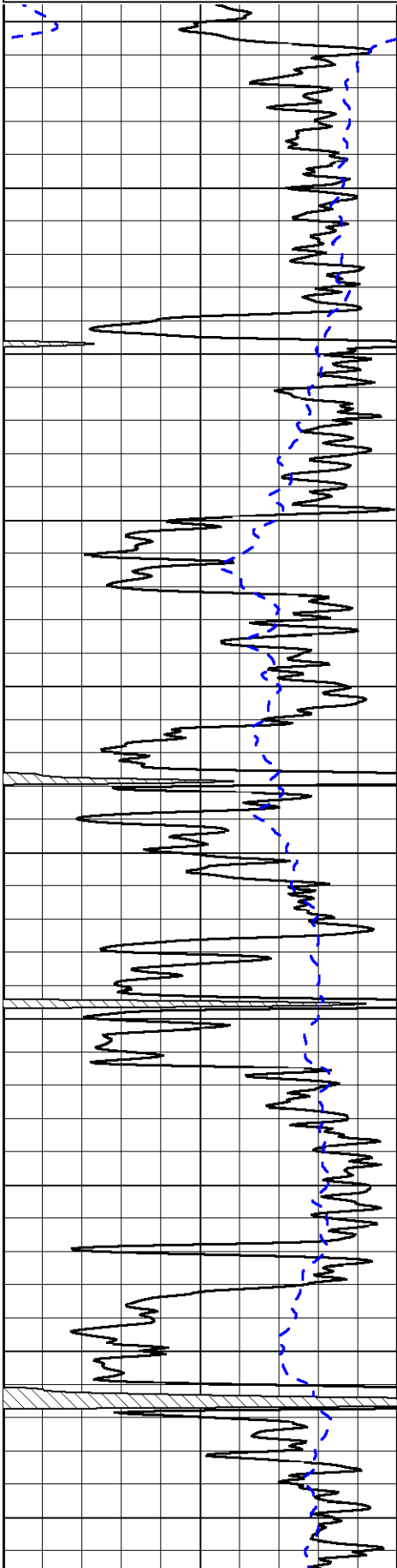
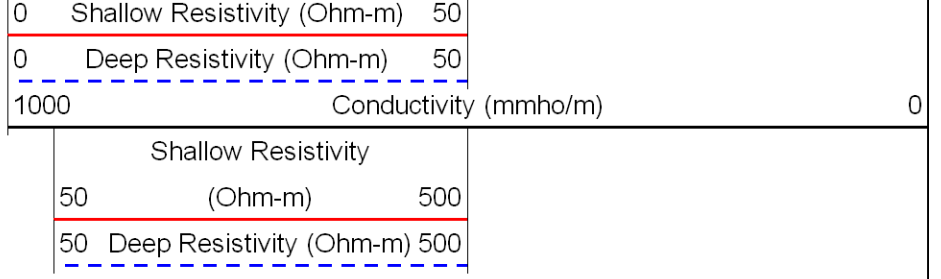
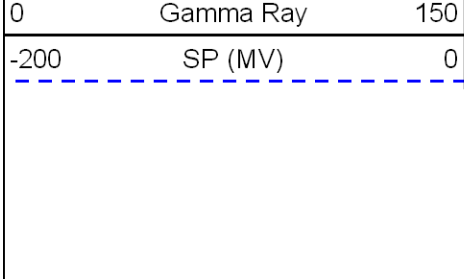
All interpretations are opinions based on inferences from electrical or other measurements and we cannot and do not guarantee the accuracy or correctness of any interpretation, and we shall not, except in the case of gross or willful negligence on our part, be liable or responsible for any loss, costs, damages, or expenses incurred or sustained by anyone resulting from any interpretation made by any of our officers, agents or employees. These interpretations are also subject to our general terms and conditions set out in our current Price Schedule.

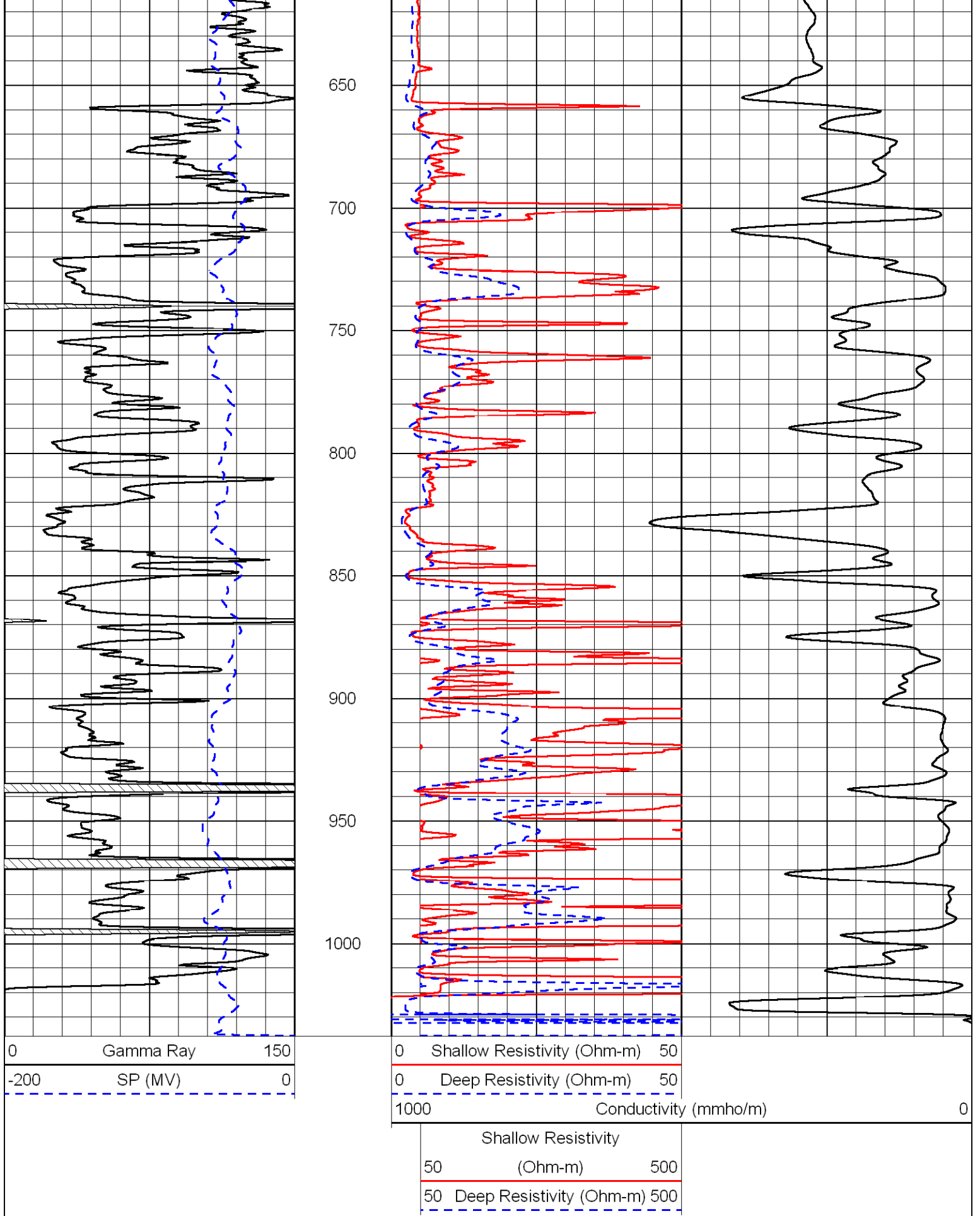
Comments

Thank you for using Log-Tech, Inc.
(785) 625-3858

I-70 to Exit 313 (Hwy 177); North to 18 East; 5-1/2 East;
North into location

Database File: c:\warrior\data\cfa oil_sue duroche no. 2\cfahd.db
 Dataset Pathname: DIL/stack
 Presentation Format: dil2in
 Dataset Creation: Sat Jun 27 09:06:07 2009
 Charted by: Depth in Feet scaled 1:600

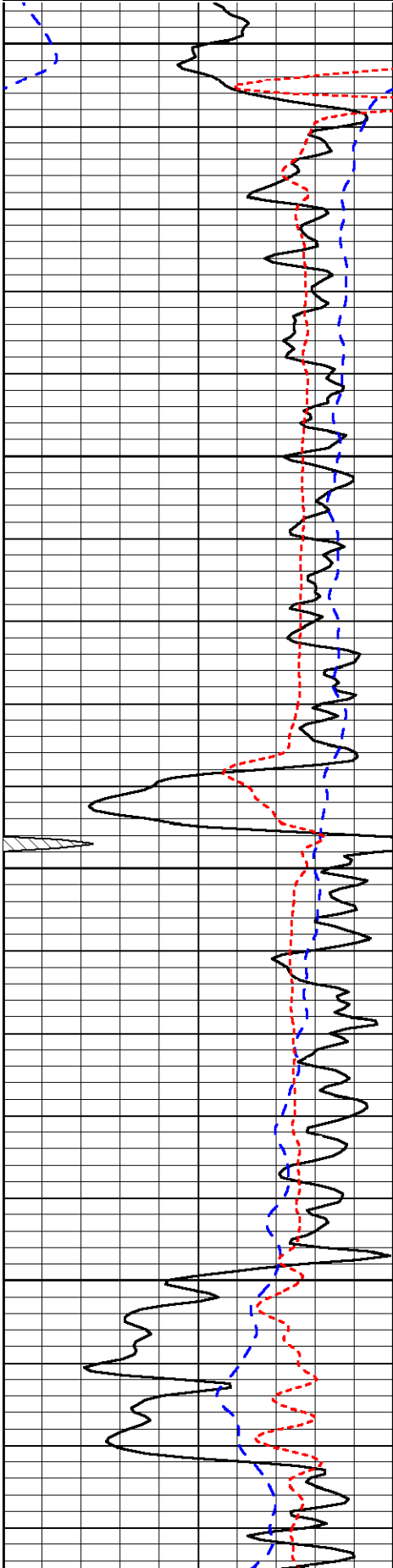




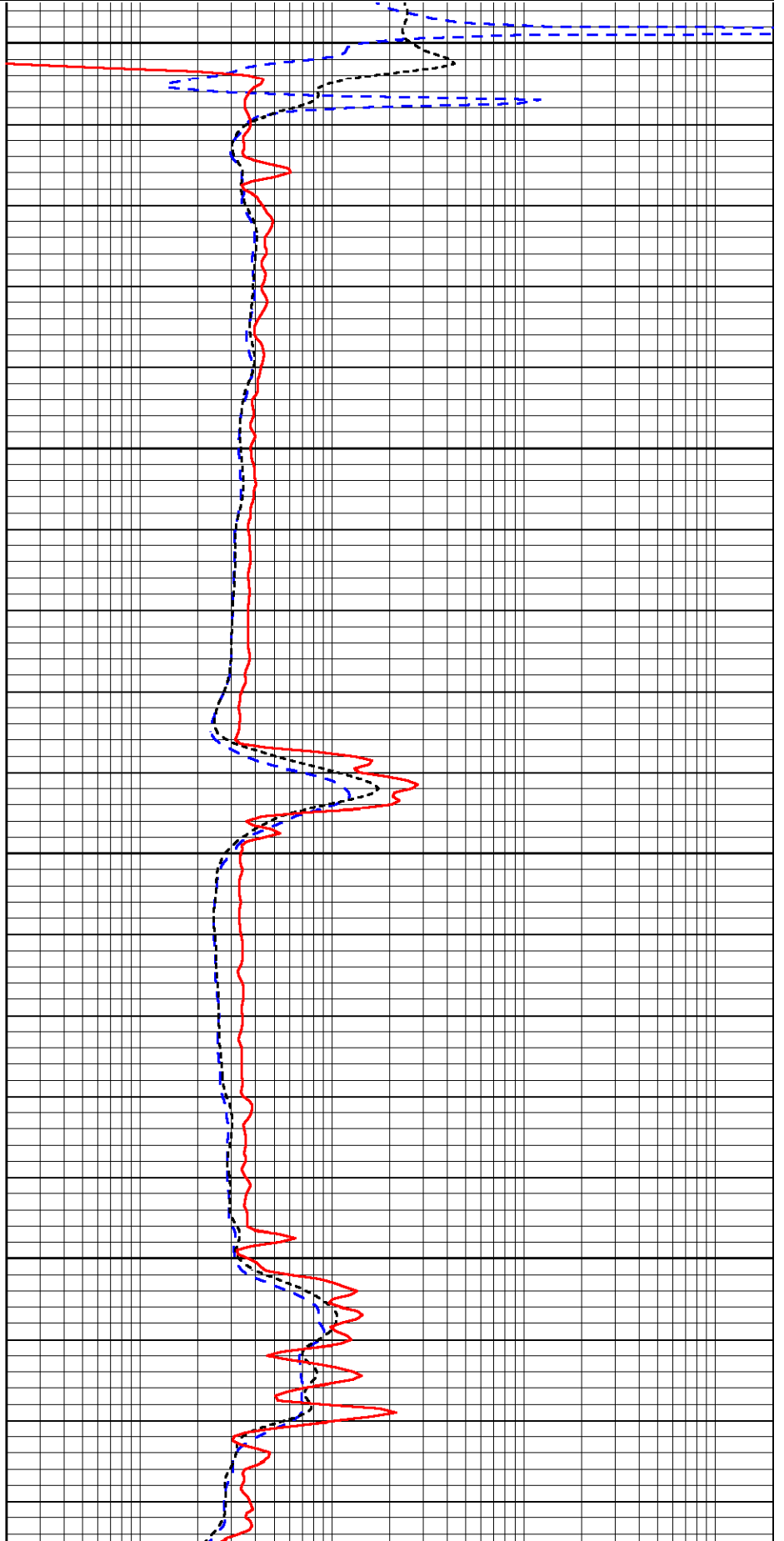
Database File: c:\warrior\data\cfa oil_sue duroche no. 2\cfahd.db
 Dataset Pathname: DIL/stack
 Presentation Format: dil
 Dataset Creation: Sat Jun 27 09:06:07 2009

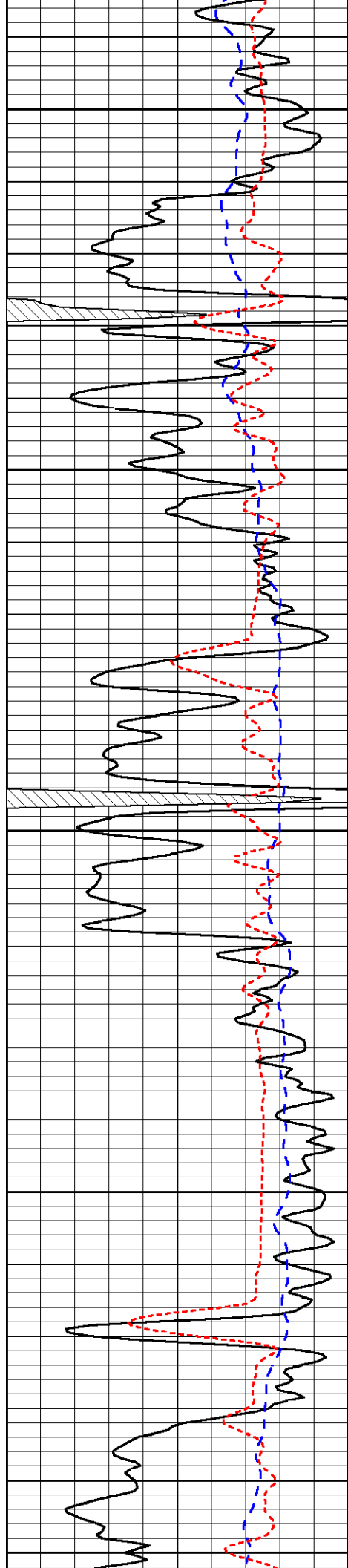
0	Gamma Ray	150
-200	SP (MV)	0
-160	Rxo / Rt	40

0.2	Deep Resistivity (Ohm-m)	2000
0.2	Medium Resistivity (Ohm-m)	2000
0.2	Shallow Resistivity (Ohm-m)	2000



150
200
250
300





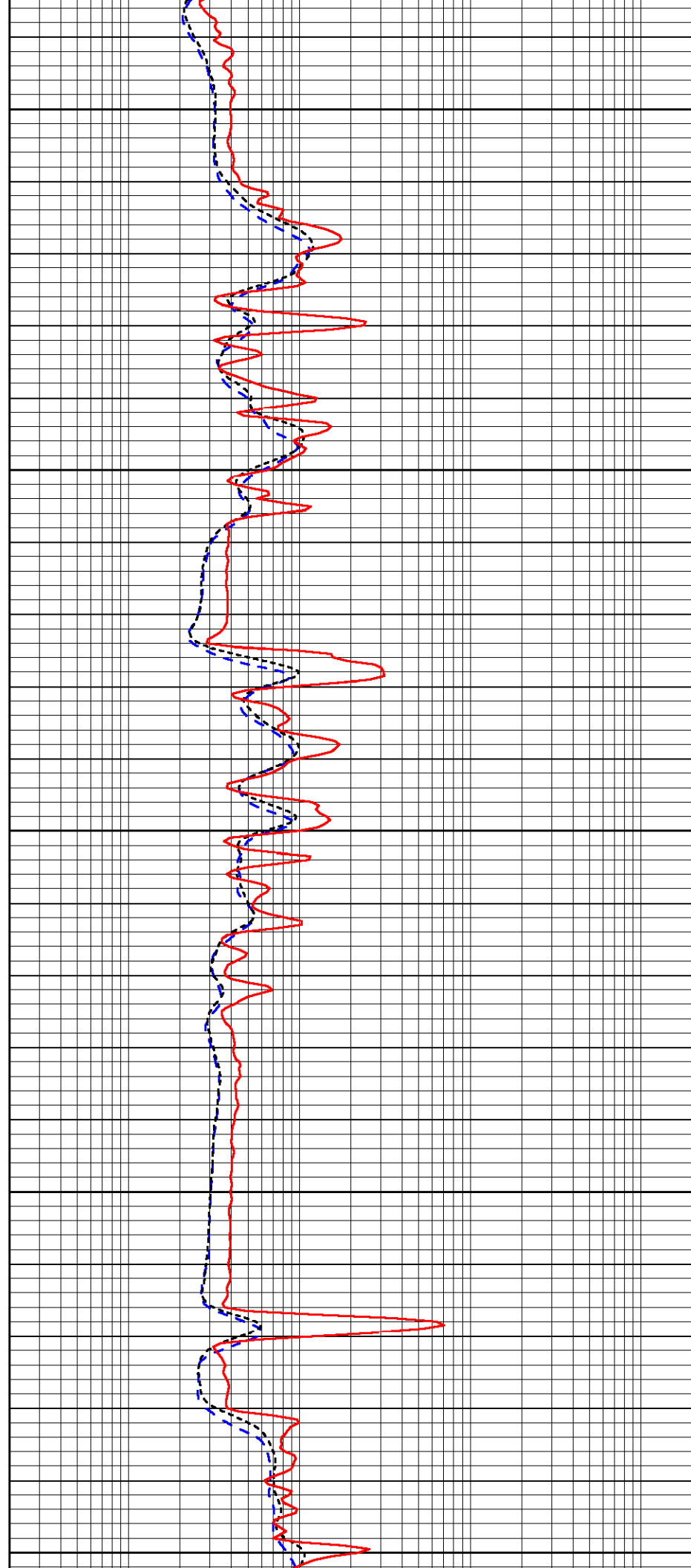
350

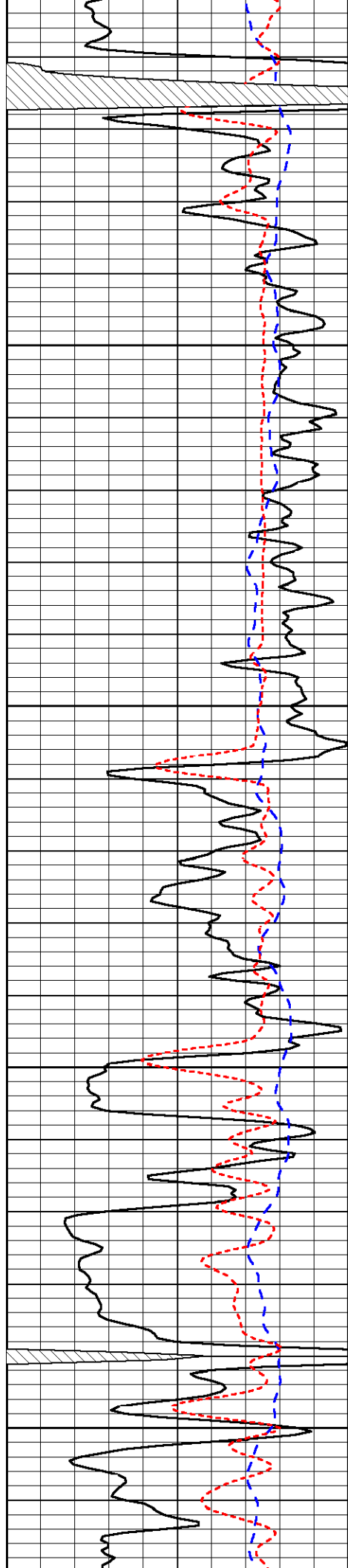
400

450

500

550



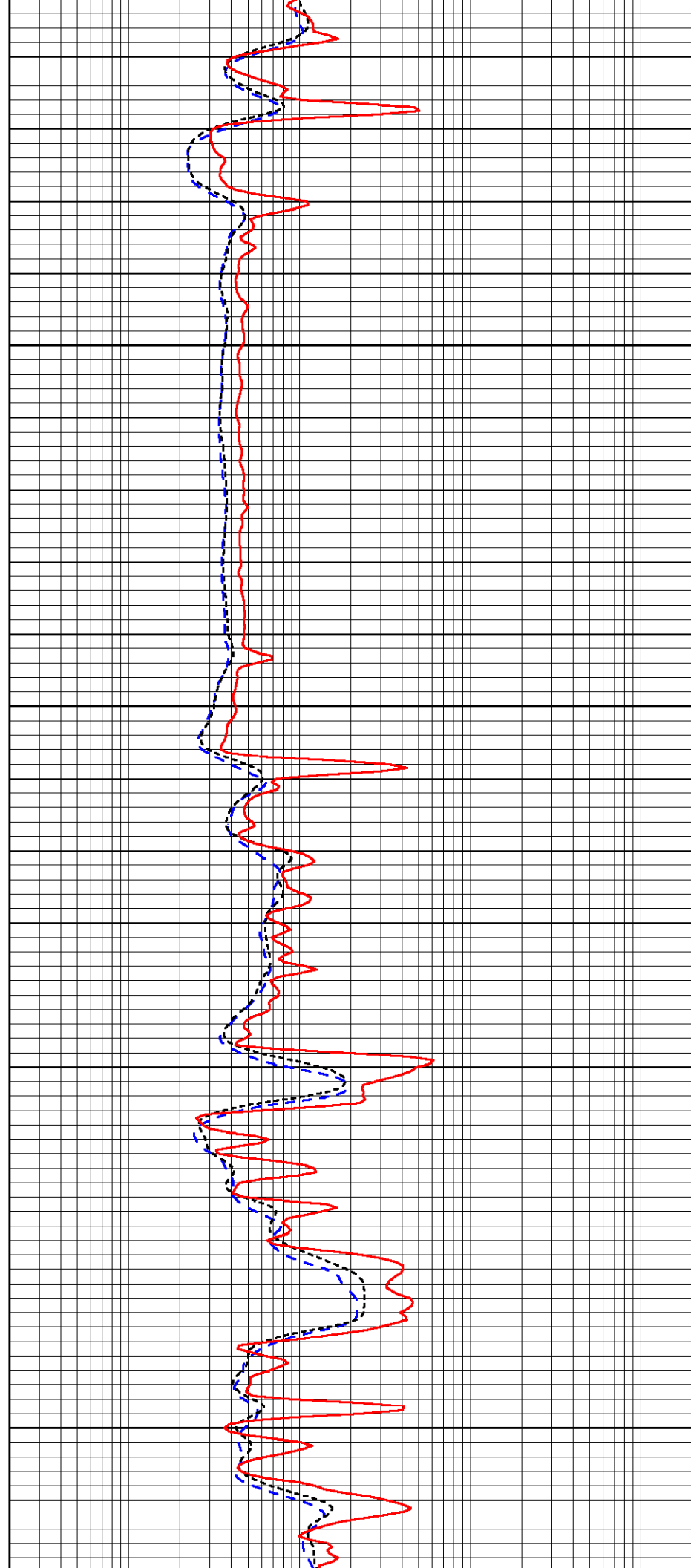


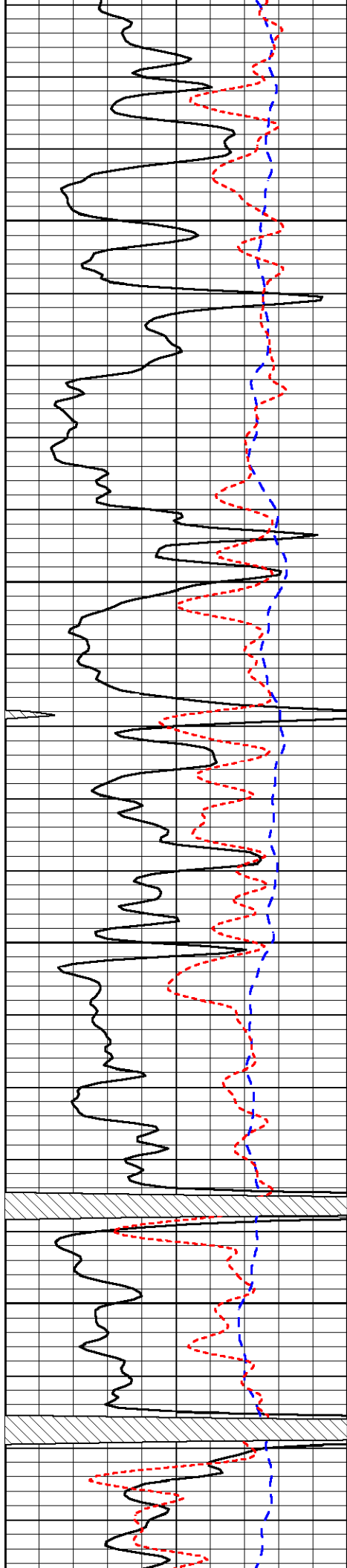
600

650

700

750



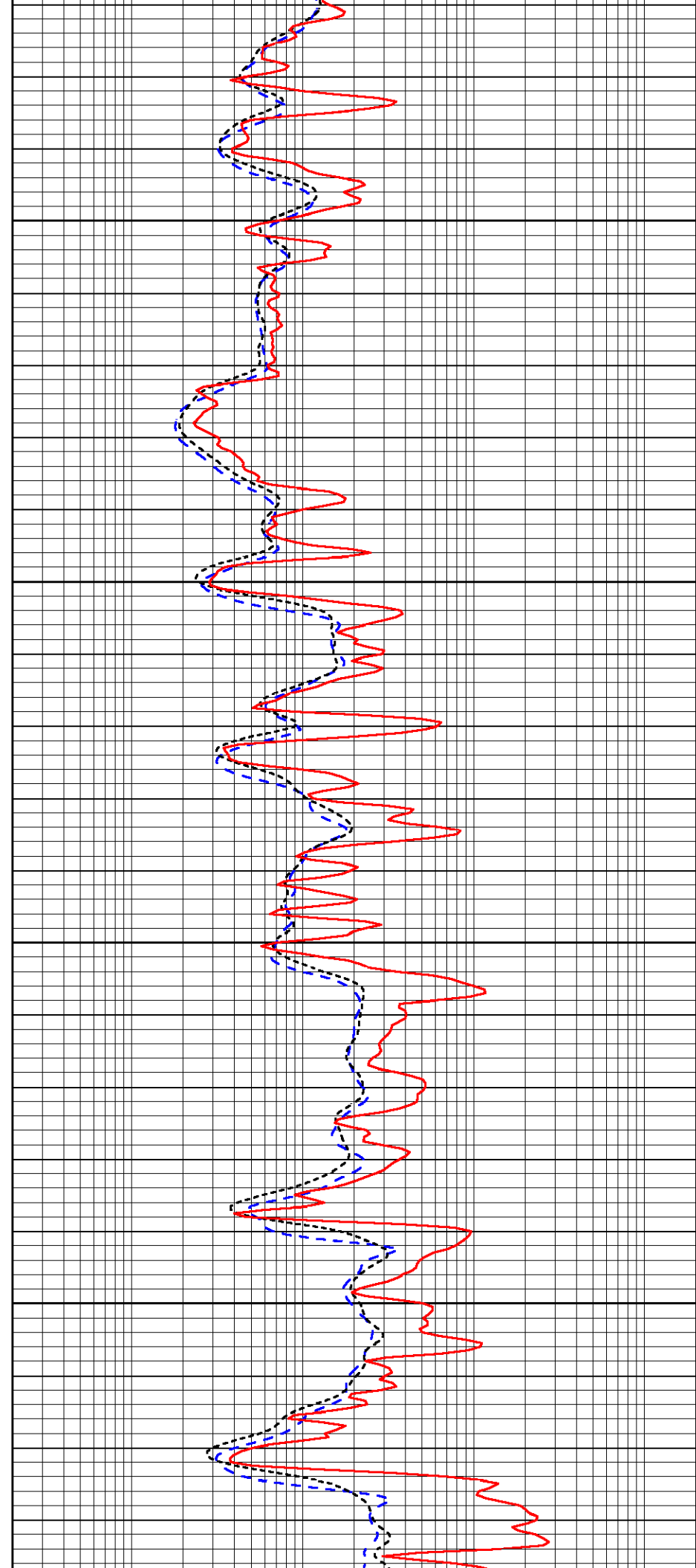


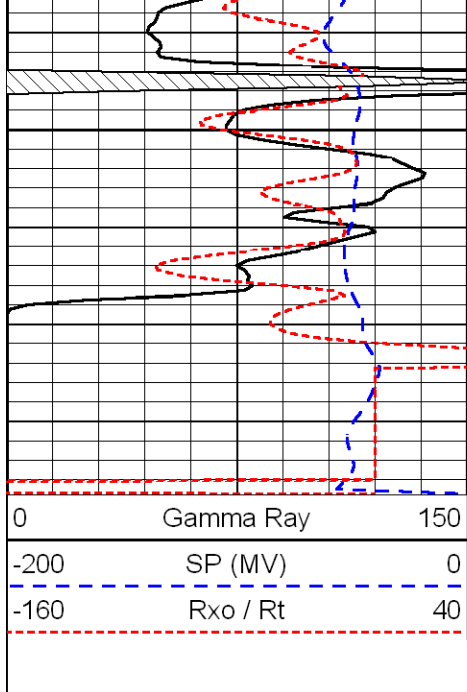
800

850

900

950





1000

