



**Borehole Compensated  
Sonic Log**

**DIGITAL LOG (785) 625-3858**

API No. 15-195-22,608-00-00	Company <b>CMX INC.</b>	Well <b>Smith No. 1-30</b>	Field <b>Wildcat</b>	County <b>Trego</b>	State <b>Kansas</b>
Location <b>1555' FSL &amp; 370' FEL</b>	Sec: <b>30</b>	Twp: <b>15S</b>	Rge: <b>24W</b>	Other Services CNL / CDL DIL	
Permanent Datum Log Measured From Drilling Measured From	Ground Level Kelly Bushing Kelly Bushing	Elevation <b>2467</b>	<b>5</b> Ft. Above Perm. Datum	Elevation K.B. <b>2472</b> D.F. <b>2467</b> G.L. <b>2467</b>	

Date	05/03/2009	
Run Number	Two	
Type Log	BHC Sonic	
Depth Driller	4530	
Depth Logger	4529	
Bottom Logged Interval	4518	
Top Logged Interval	200	
Type Fluid In Hole	Chemical	
Salinity, PPM CL	2,700	
Density	9.3	
Level	Full	
Max. Rec. Temp. F	123	
Operating Rig Time	4 Hours	
Equipment -- Location	7 Hays	
Recorded By	Mike Garrison	
Witnessed By	Mike Engelbrecht	

Borehole Record				Casing Record			
Run No	Bit	From	To	Size	Wgt.	From	To
One	12.25	00	221	8.625	23#	00	221
Two	7.875	221	TD				

<<< Fold Here >>>

All interpretations are opinions based on inferences from electrical or other measurements and we cannot and do not guarantee the accuracy or correctness of any interpretation, and we shall not, except in the case of gross or willful negligence on our part, be liable or responsible for any loss, costs, damages, or expenses incurred or sustained by anyone resulting from any interpretation made by any of our officers, agents or employees. These interpretations are also subject to our general terms and conditions set out in our current Price Schedule.

**Comments**

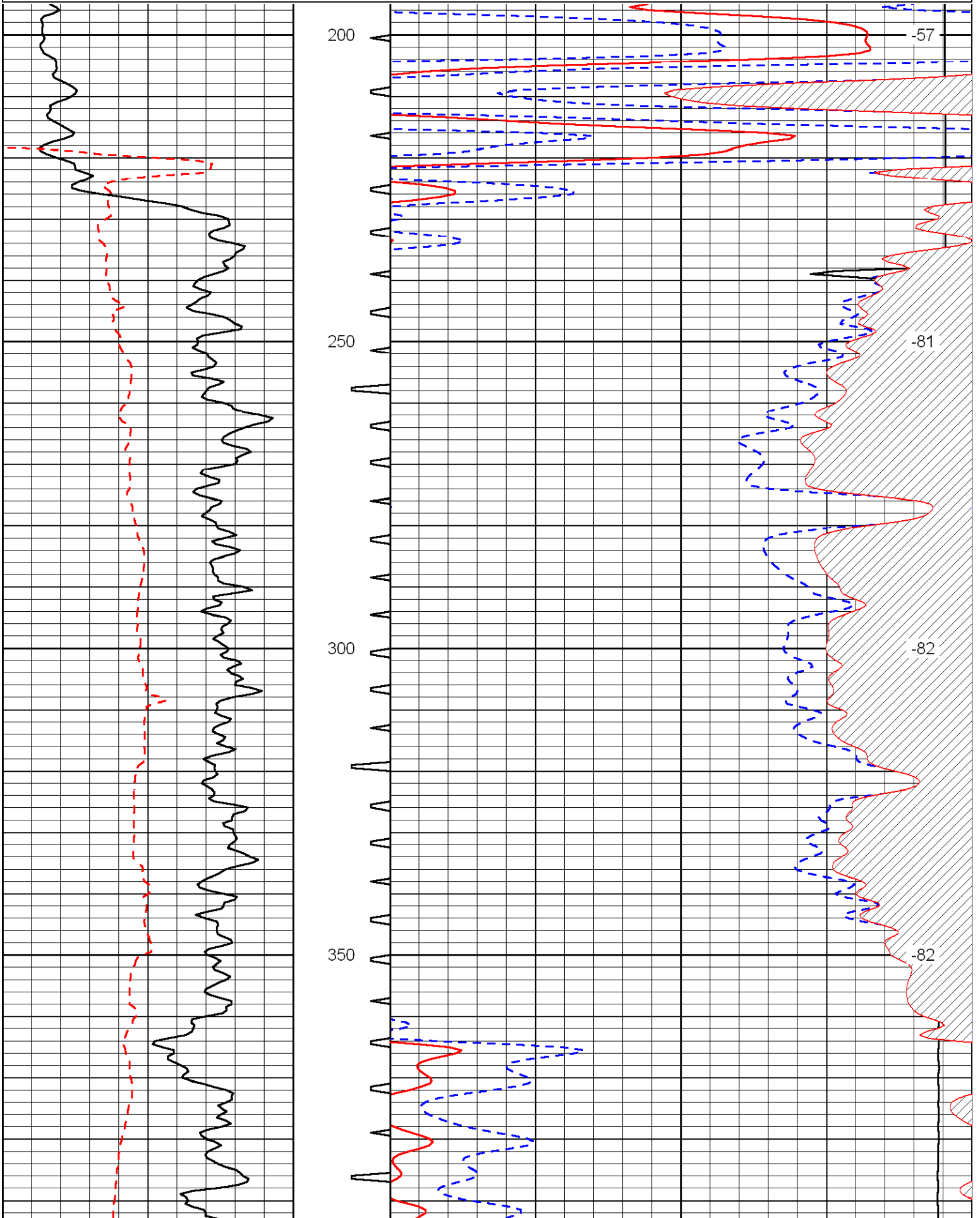
Thank you for using Log-Tech, Inc.  
(785) 625-3858

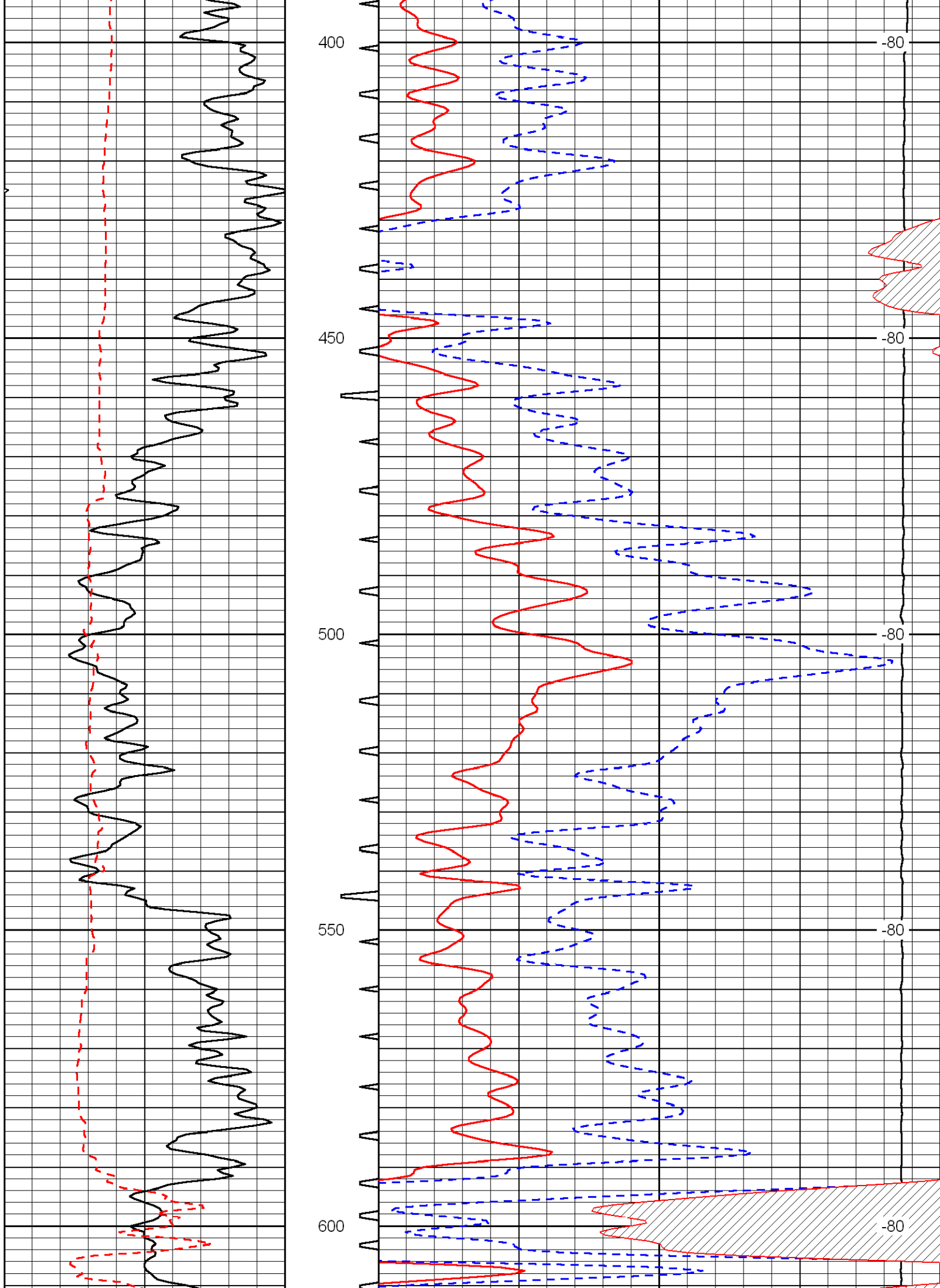
Hwy 4/283 Jct., 6 North to CC Rd, 7 West, 1/2 South, West Into

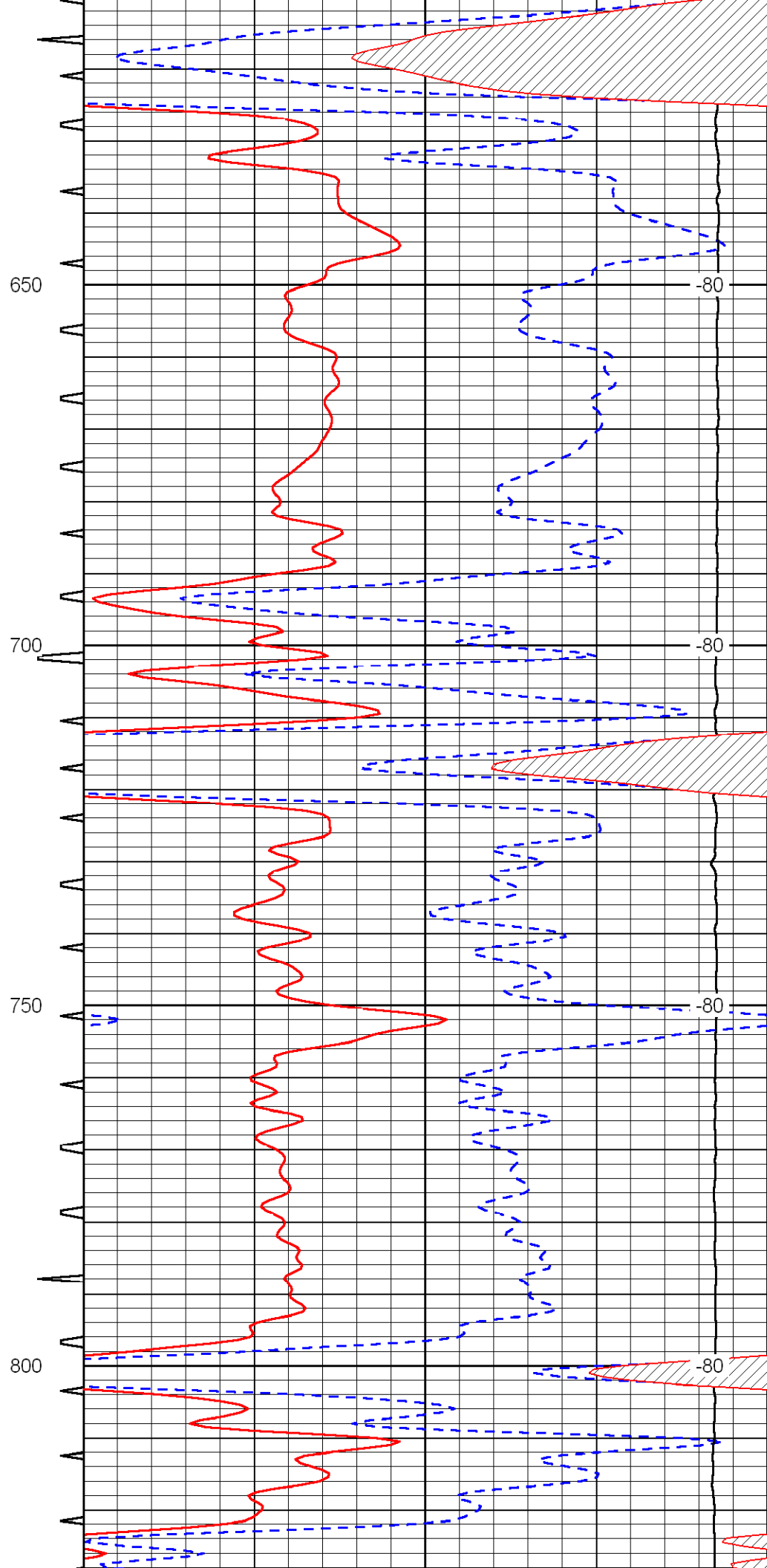
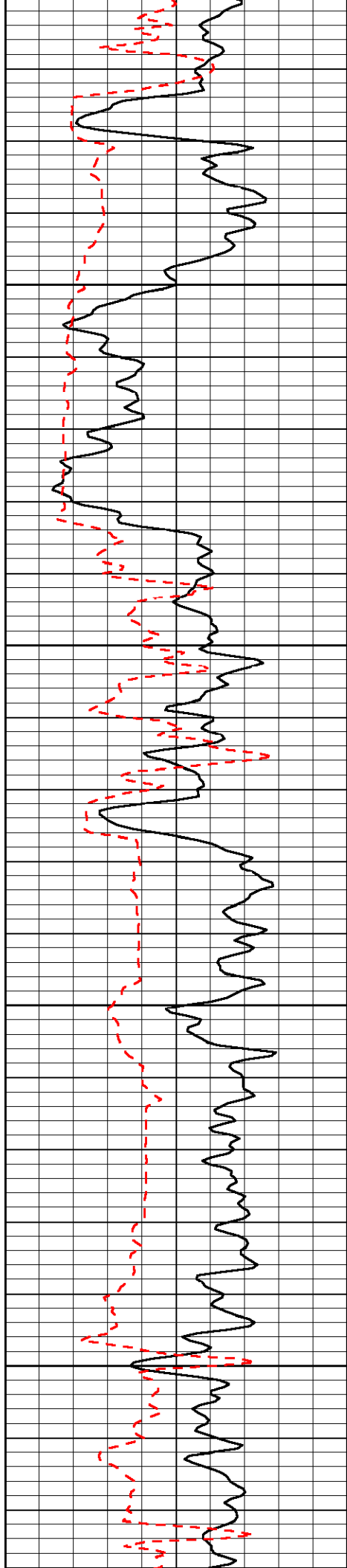
Database File: cmxhd.db  
 Dataset Pathname: dil/cmxstck  
 Presentation Format: sonic  
 Dataset Creation: Sun May 03 09:52:04 2009  
 Charted by: Depth in Feet scaled 1:240

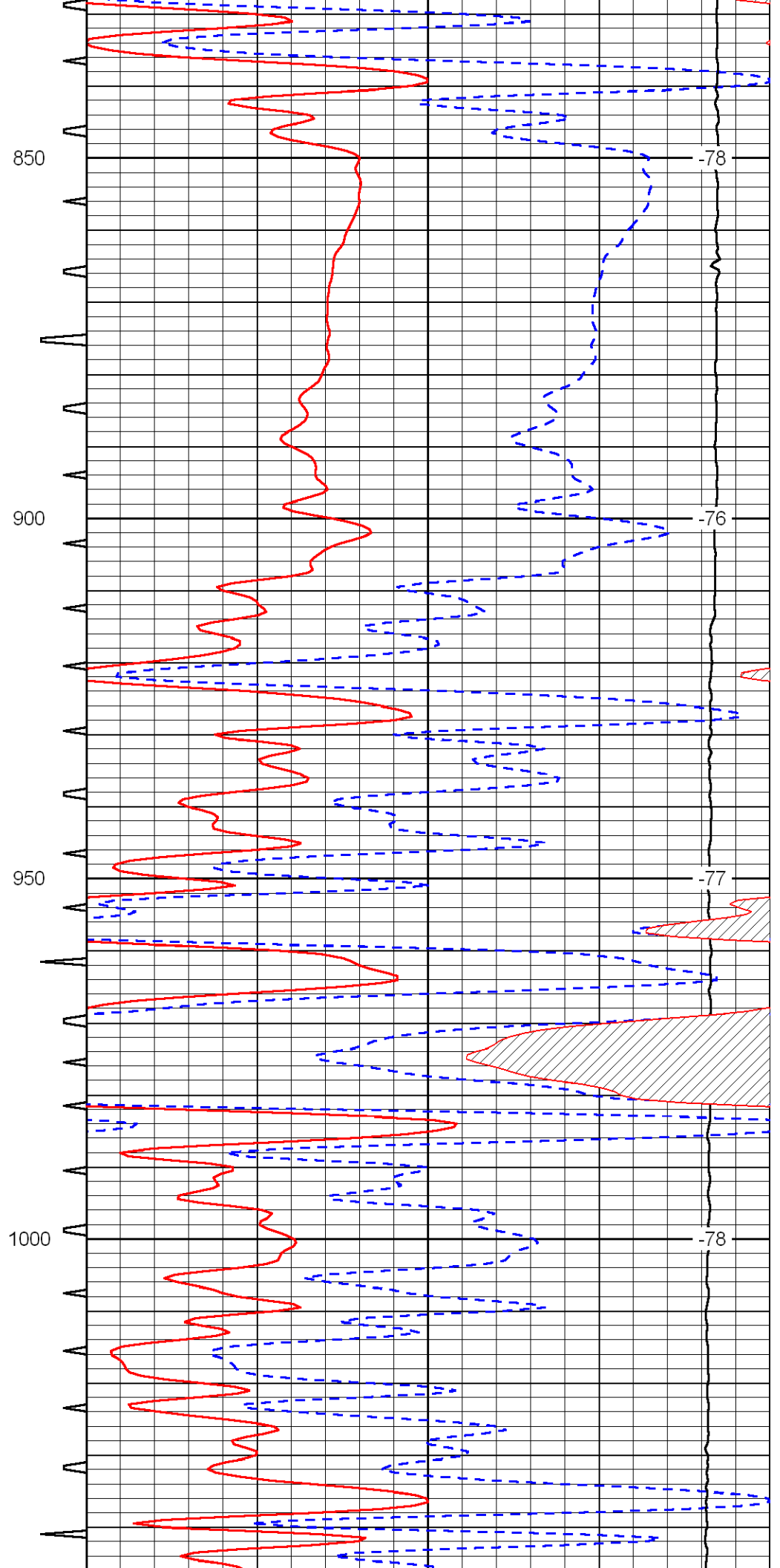
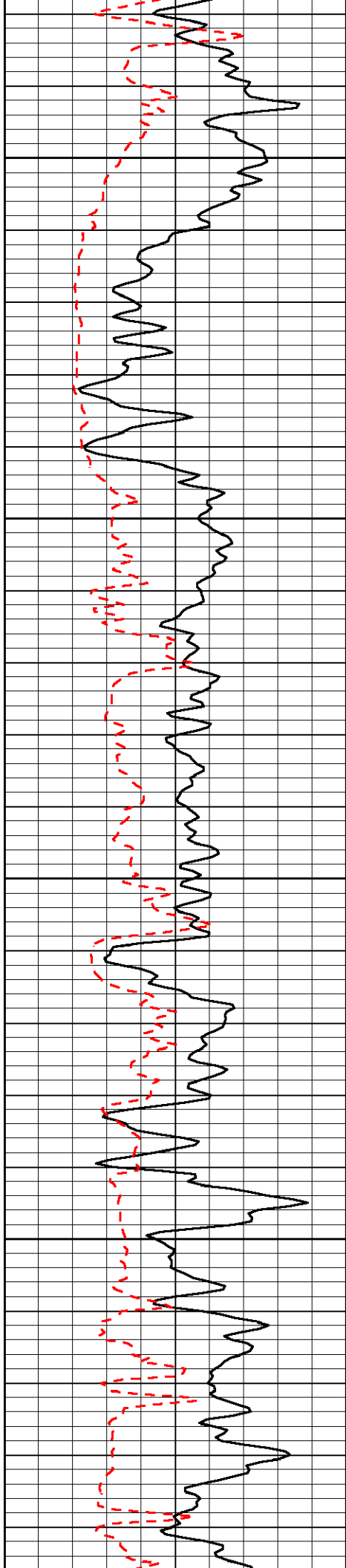
0	Gamma Ray	150	Sonic Int	140	Delta Time (usec/ft)	40
150	Gamma Ray	300	5	0	Sonic Porosity (Limestone)	-10
6	Caliper (GAPI)	16		10000	LTEN (lb)	0

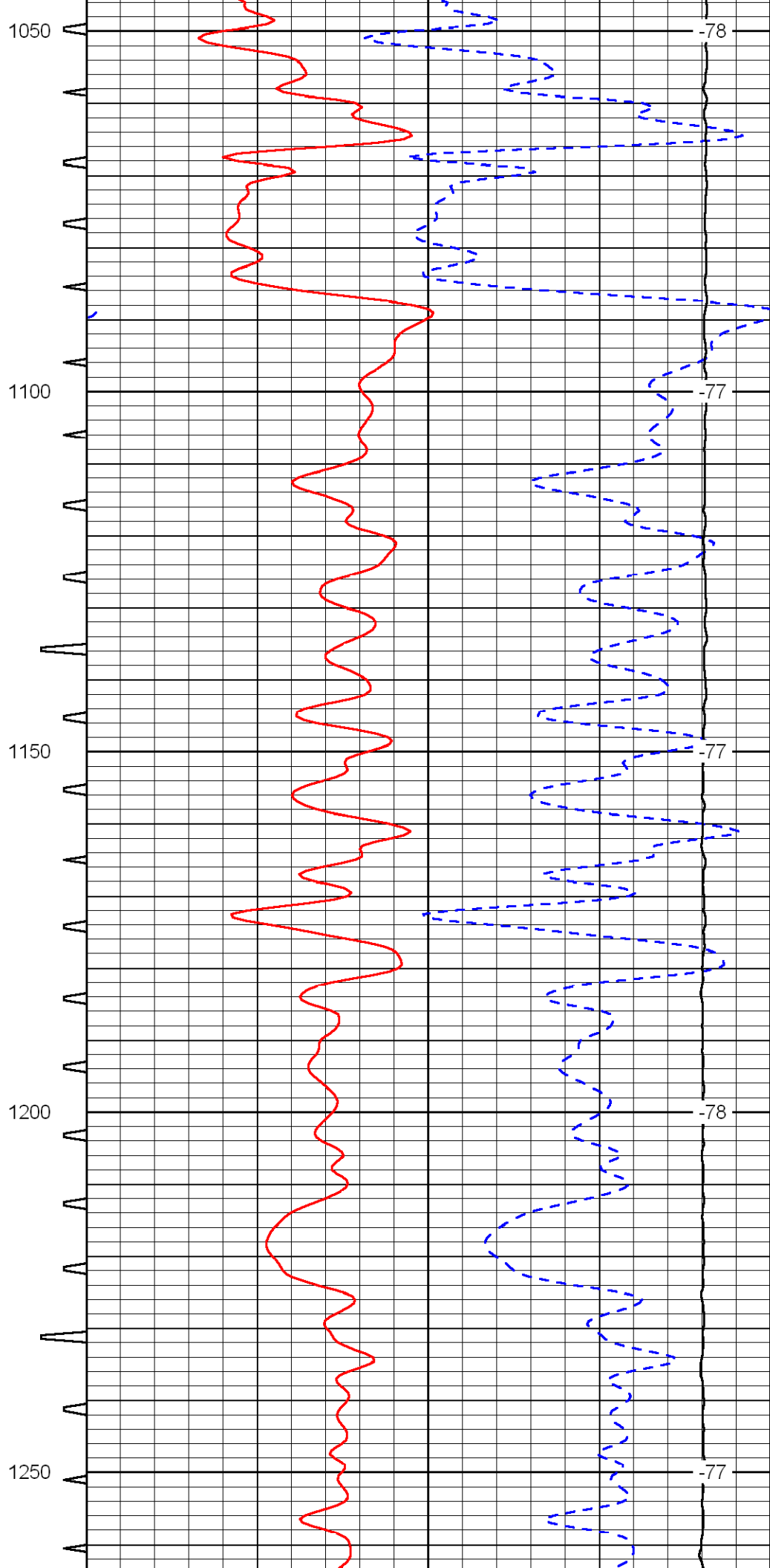
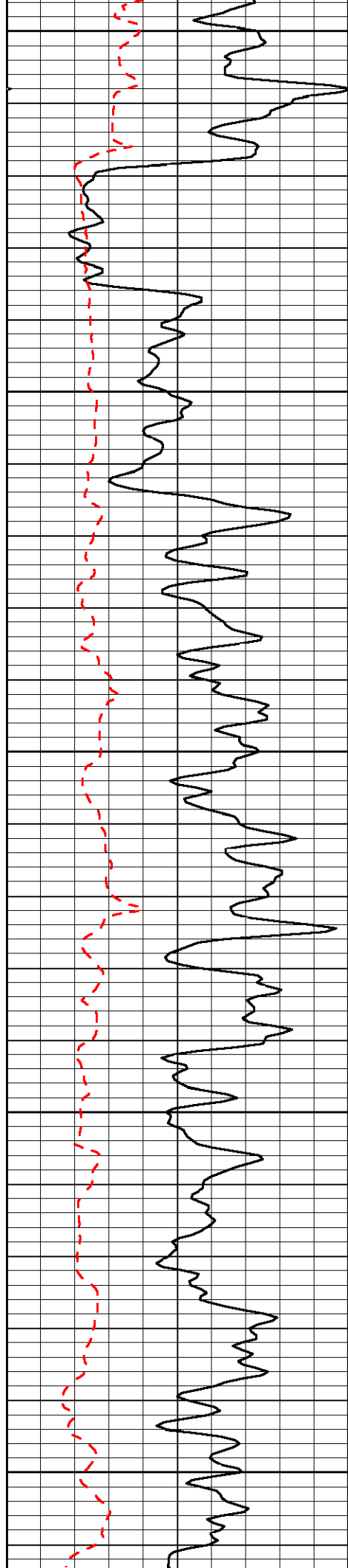
LSPD

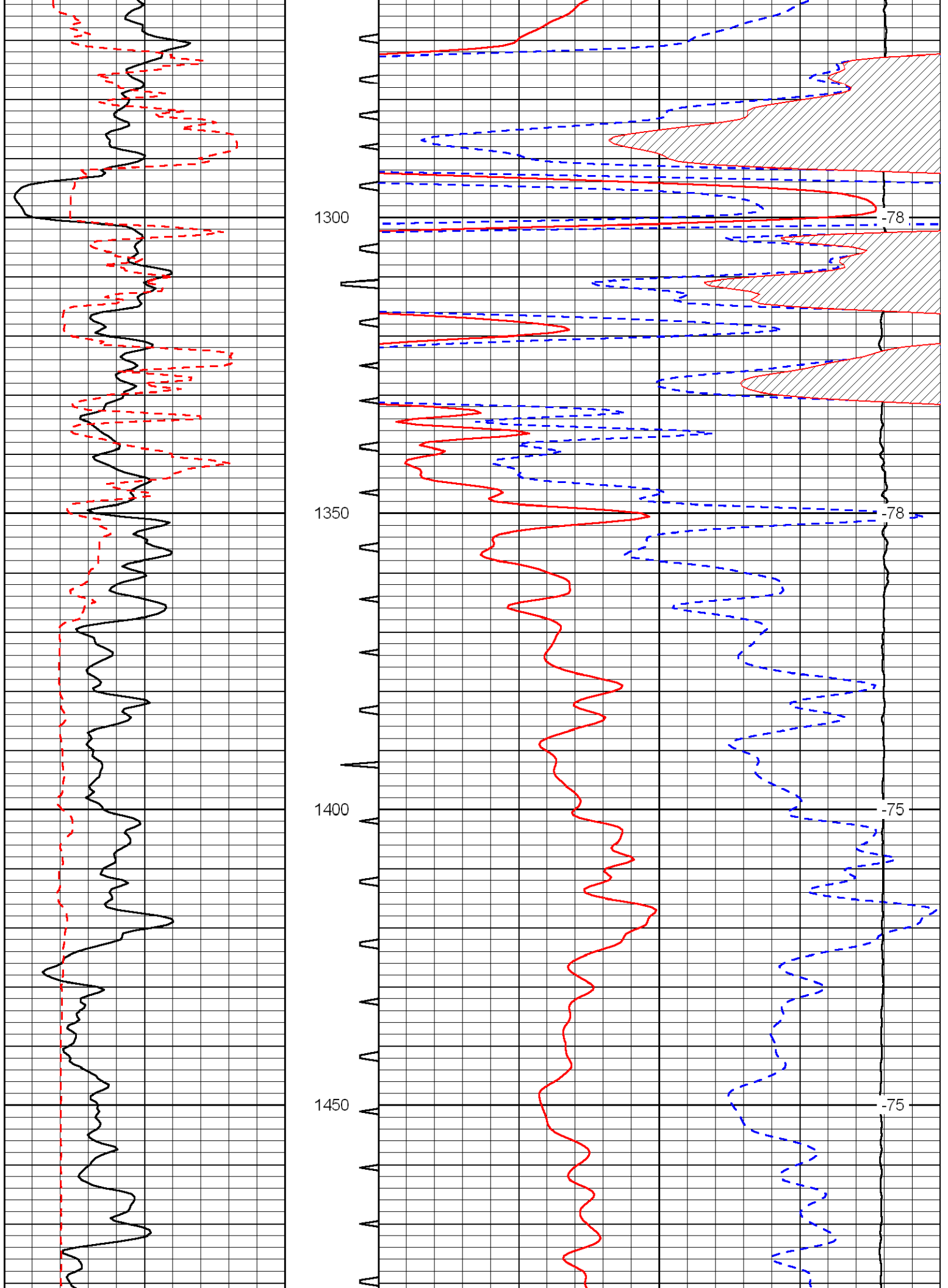


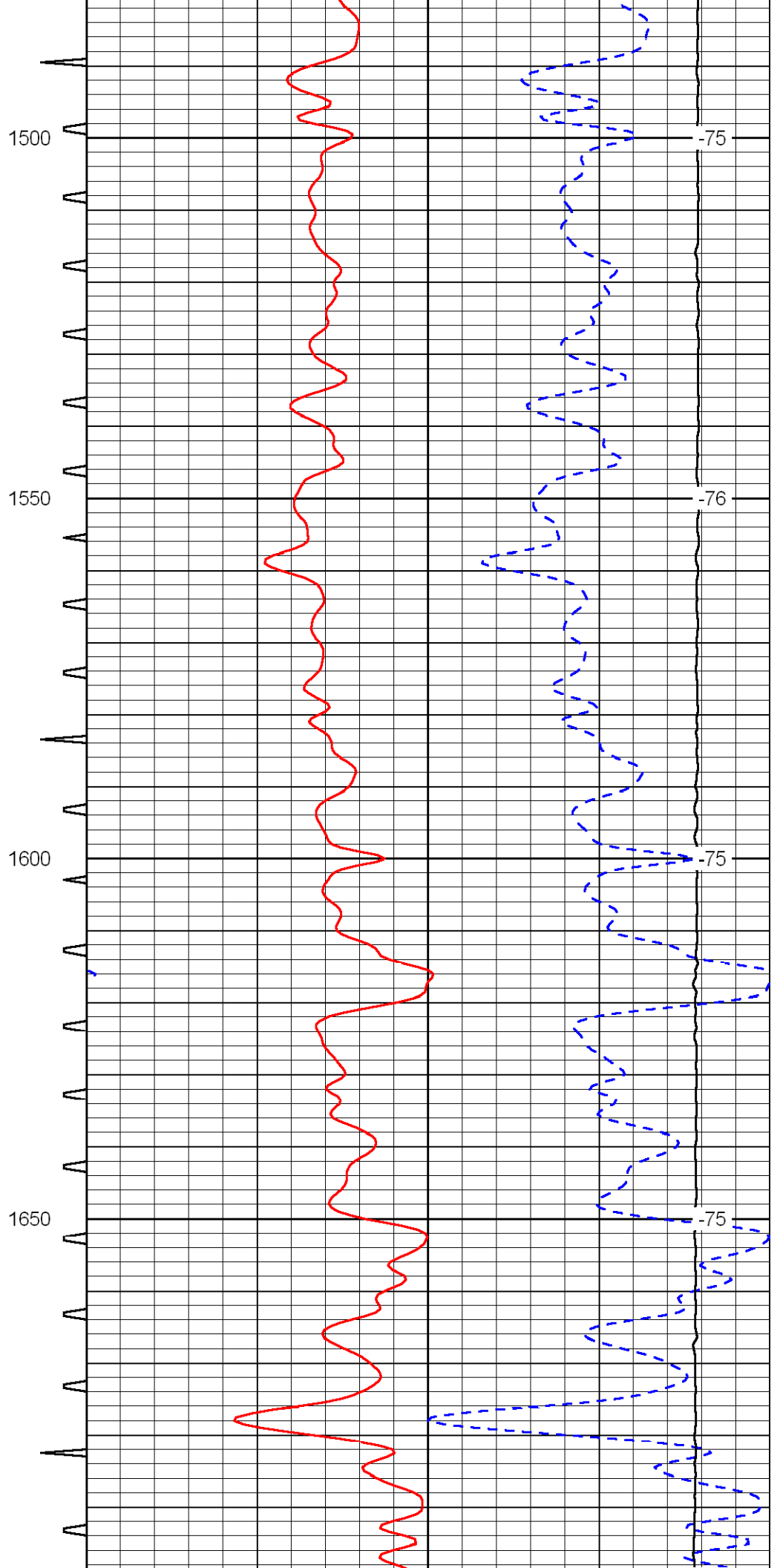
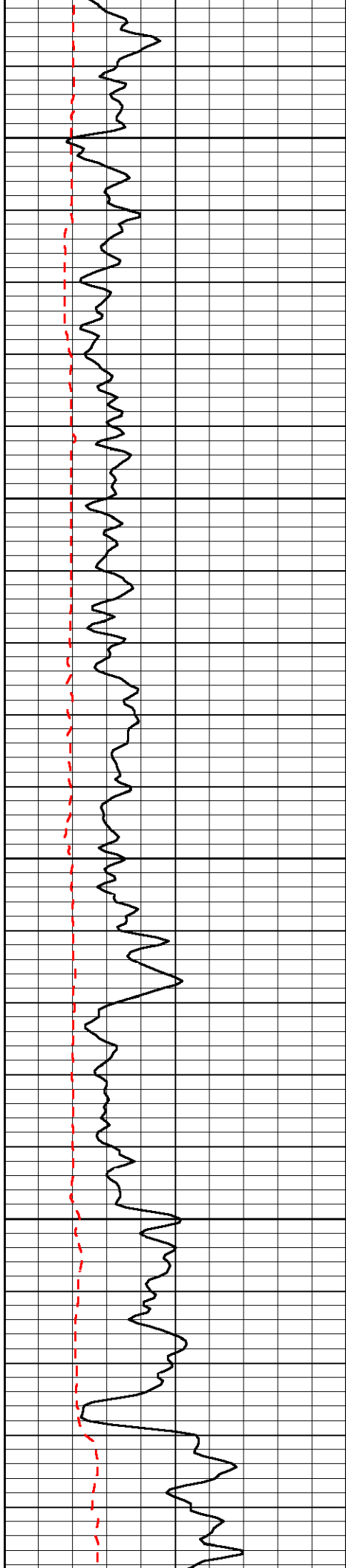


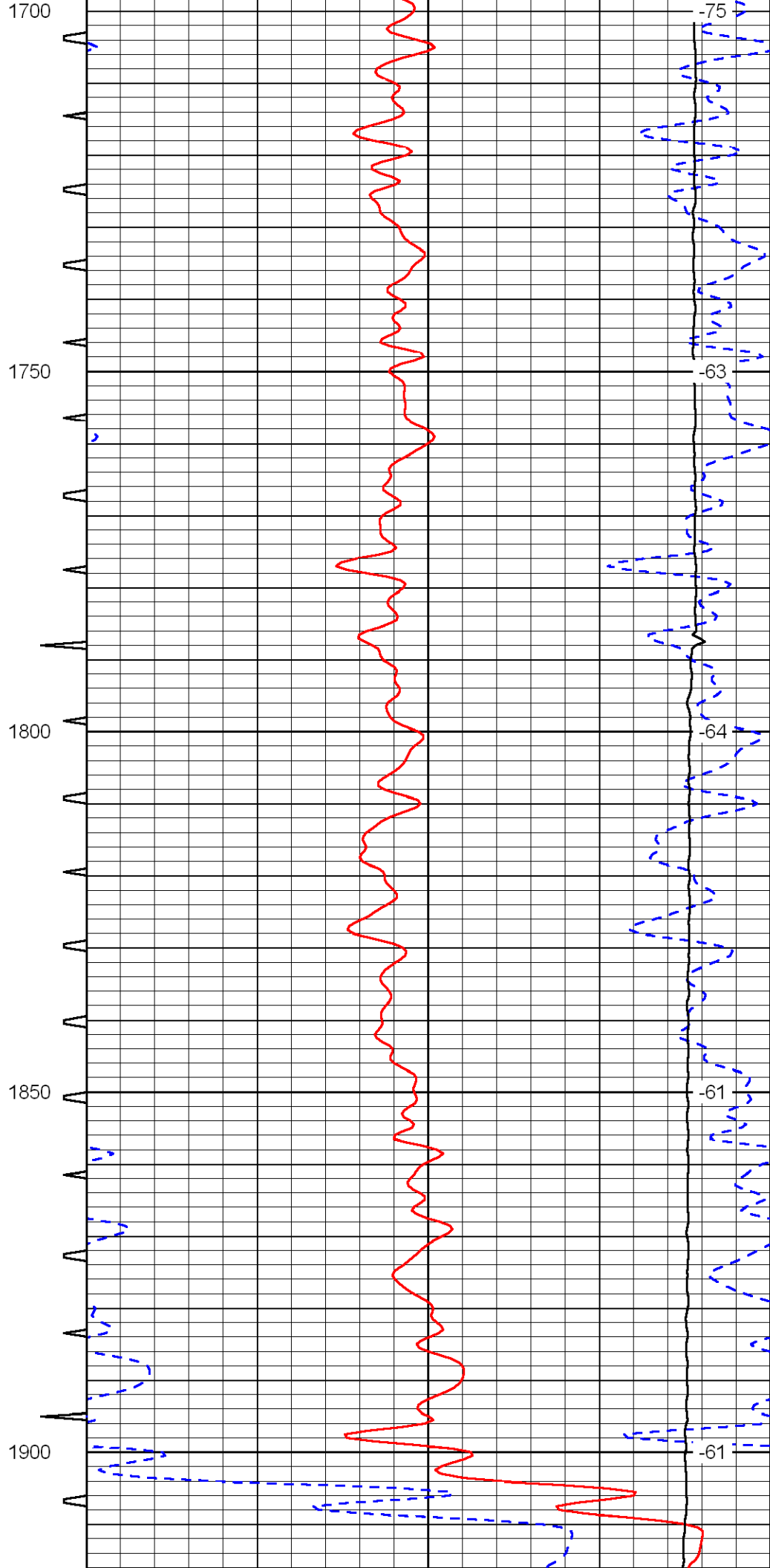
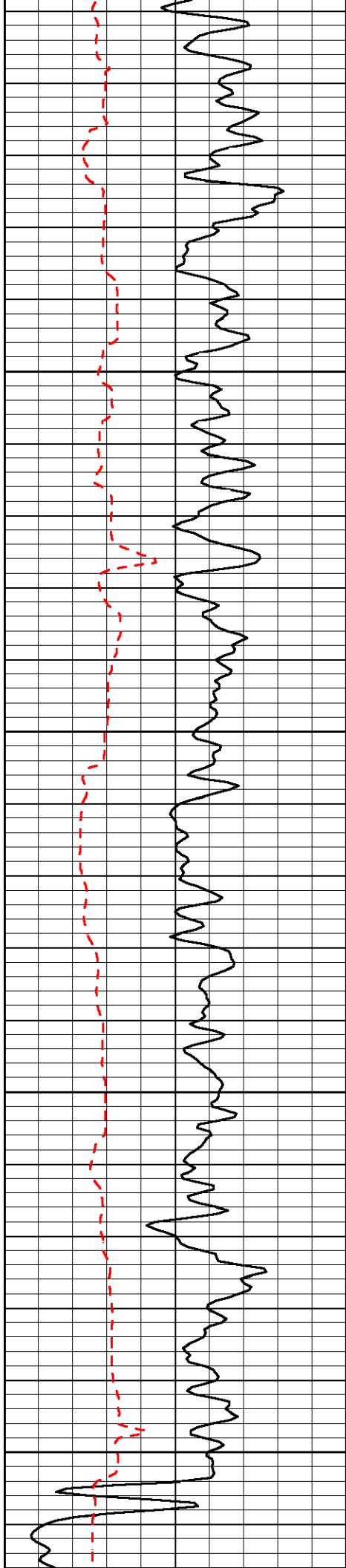


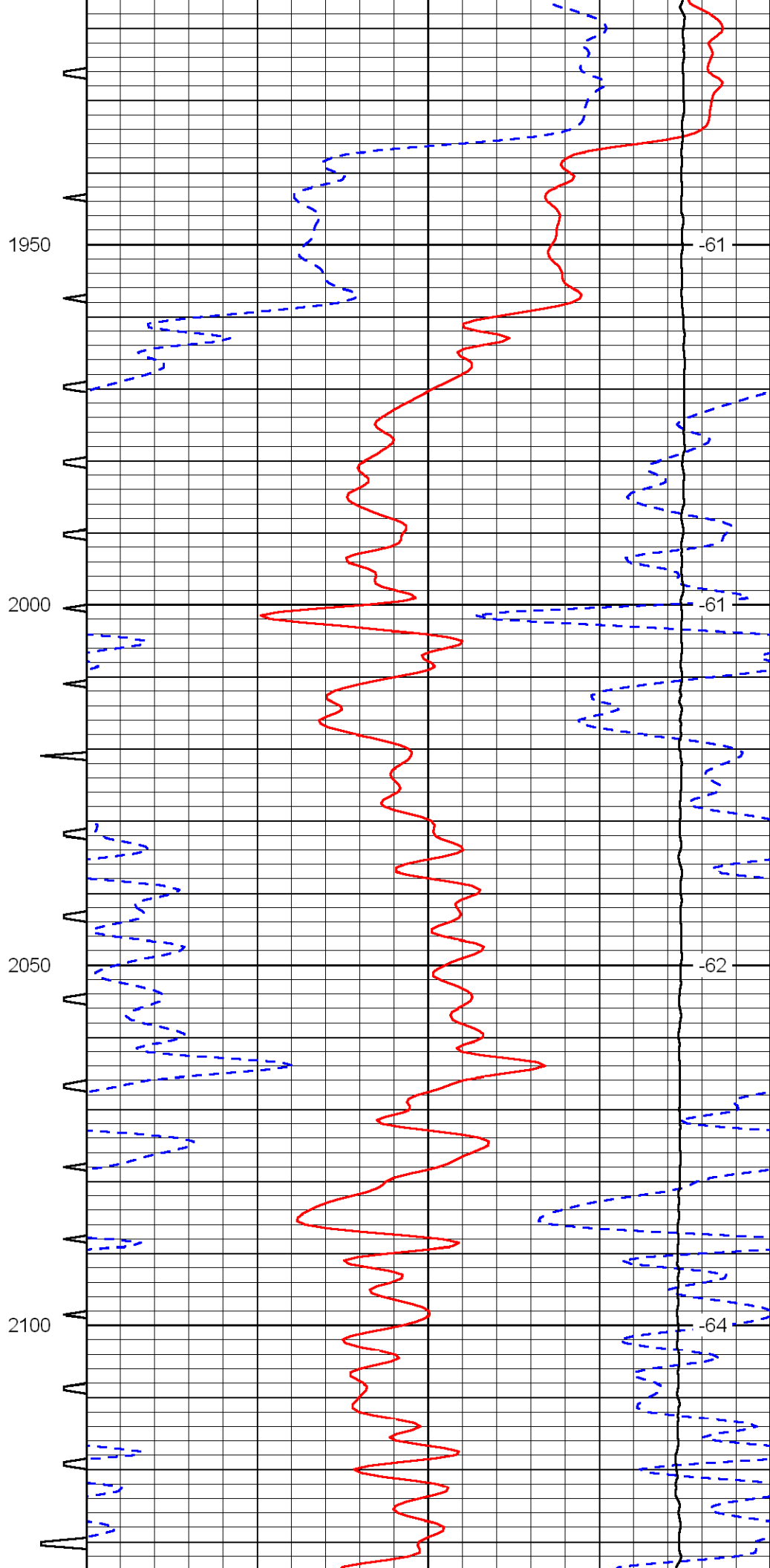
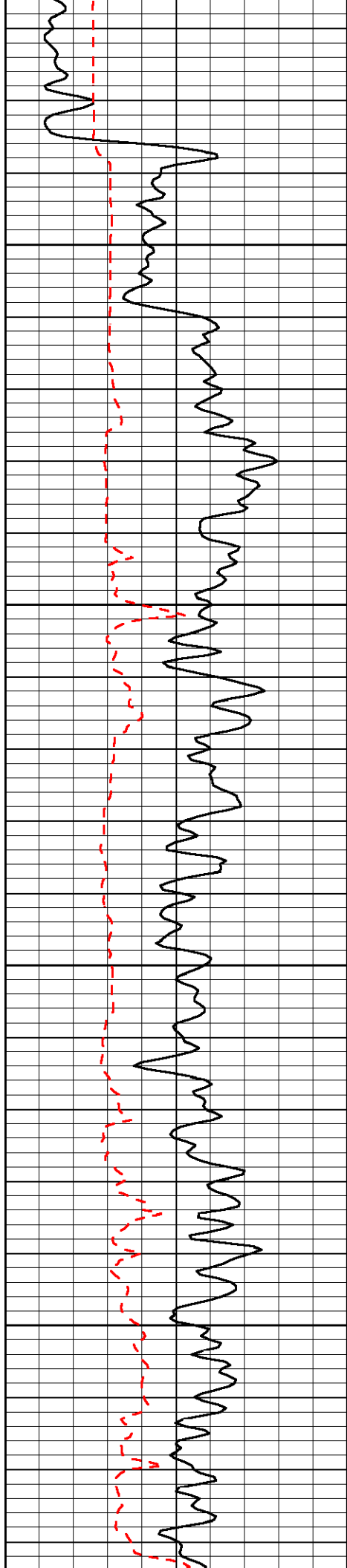


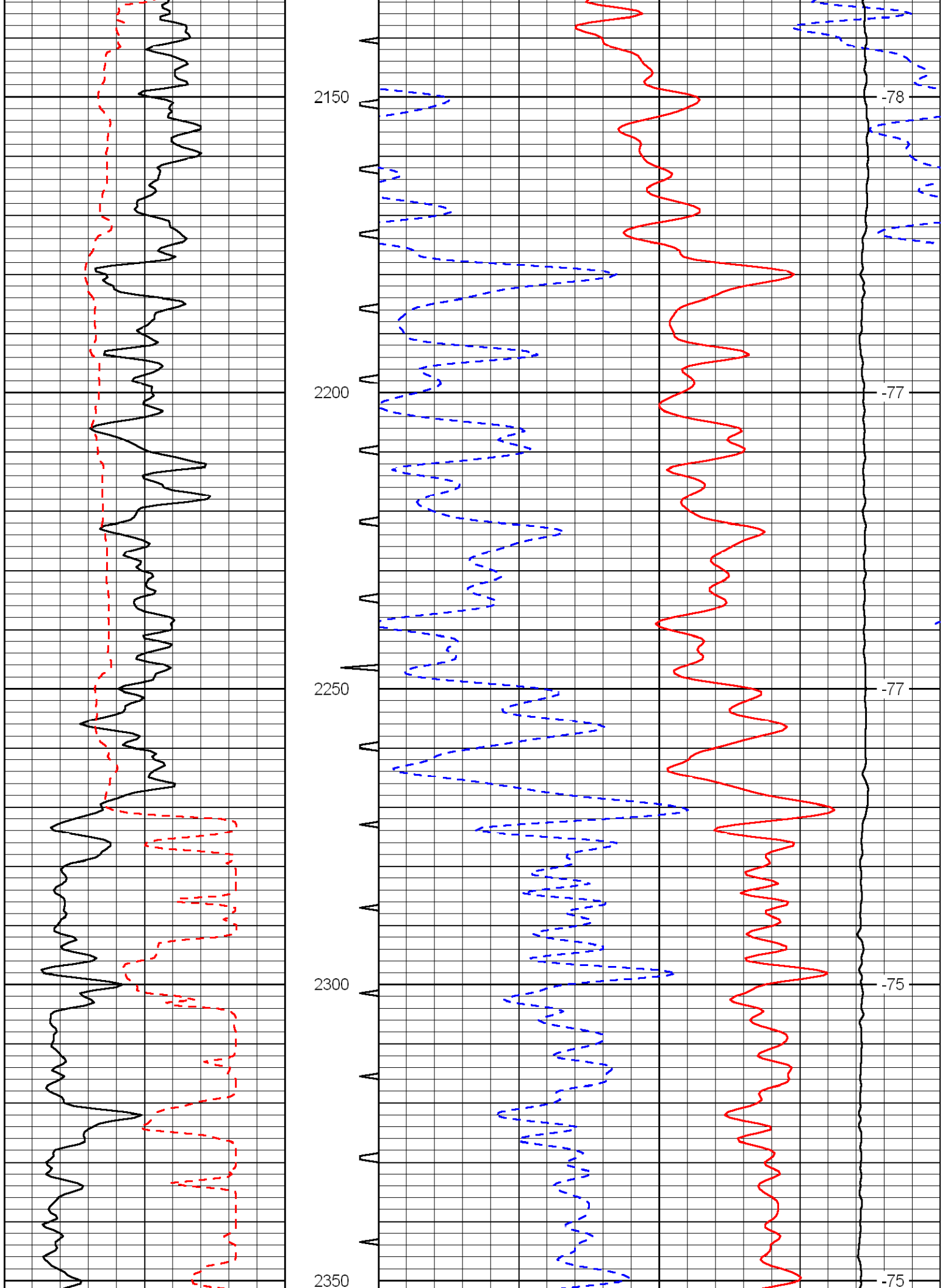


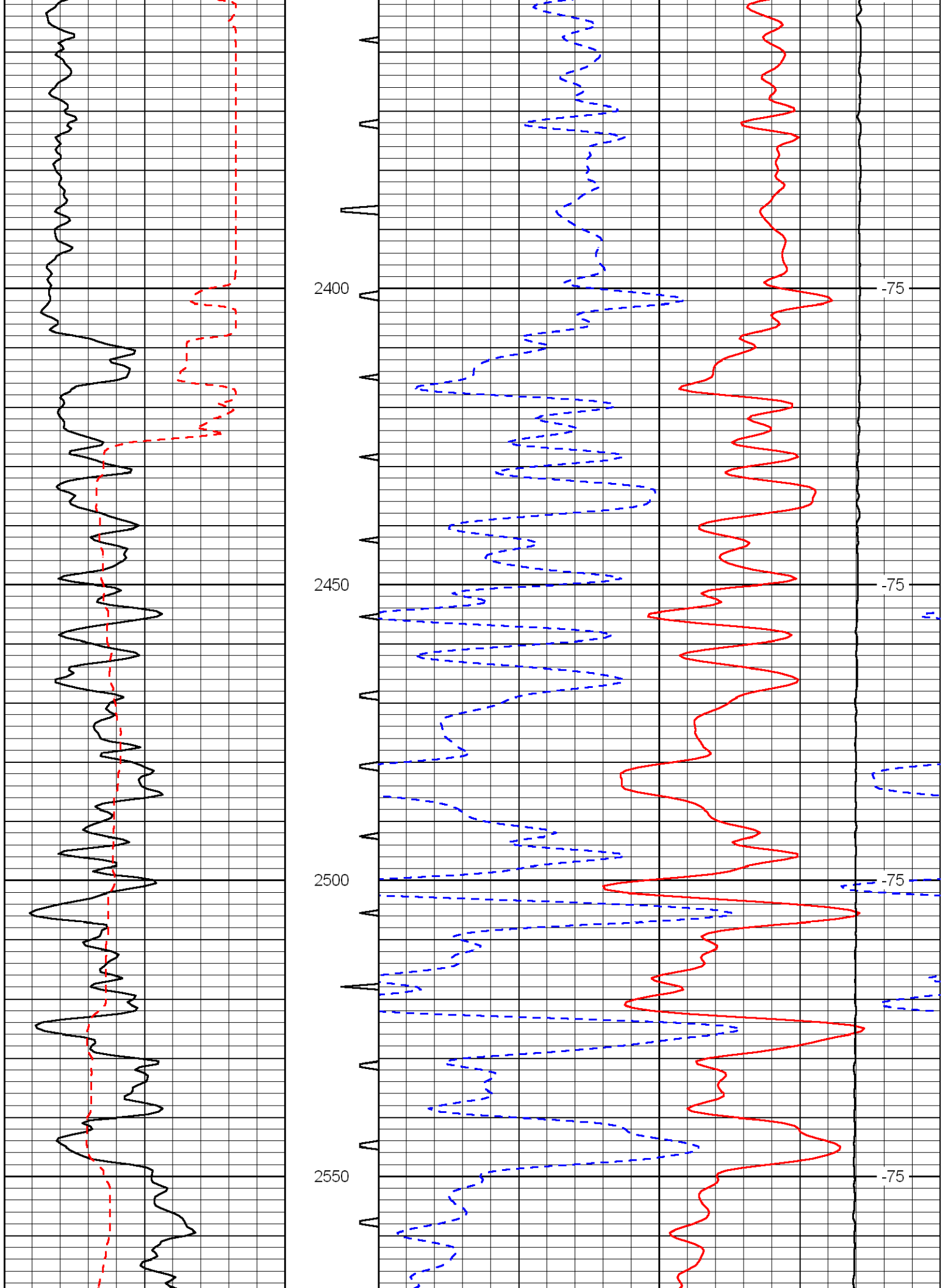


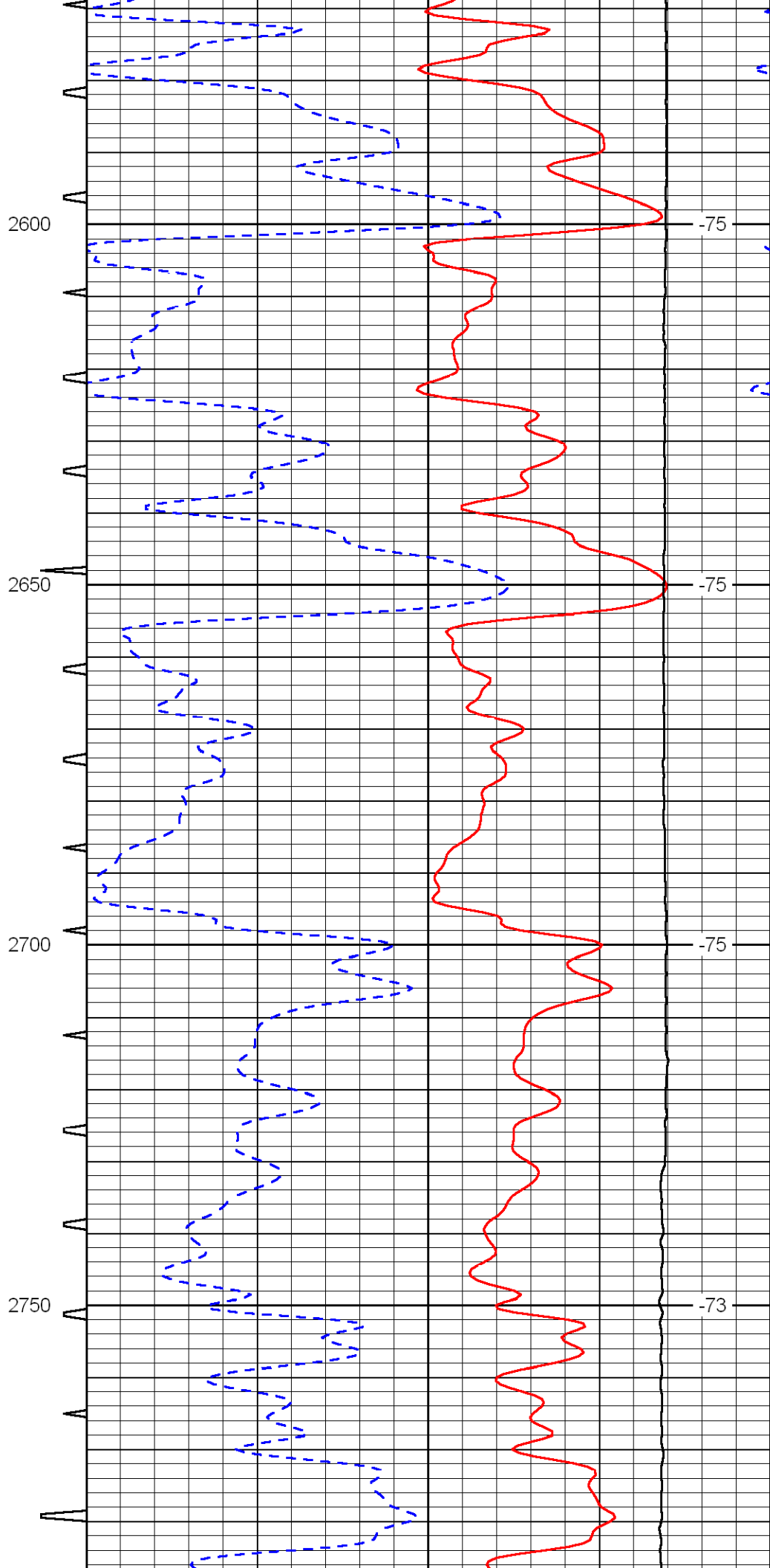
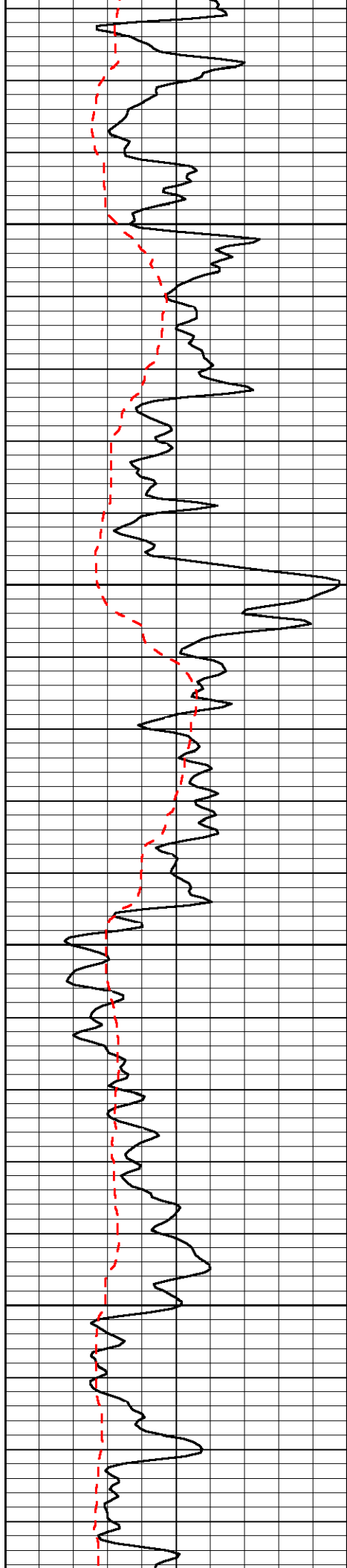


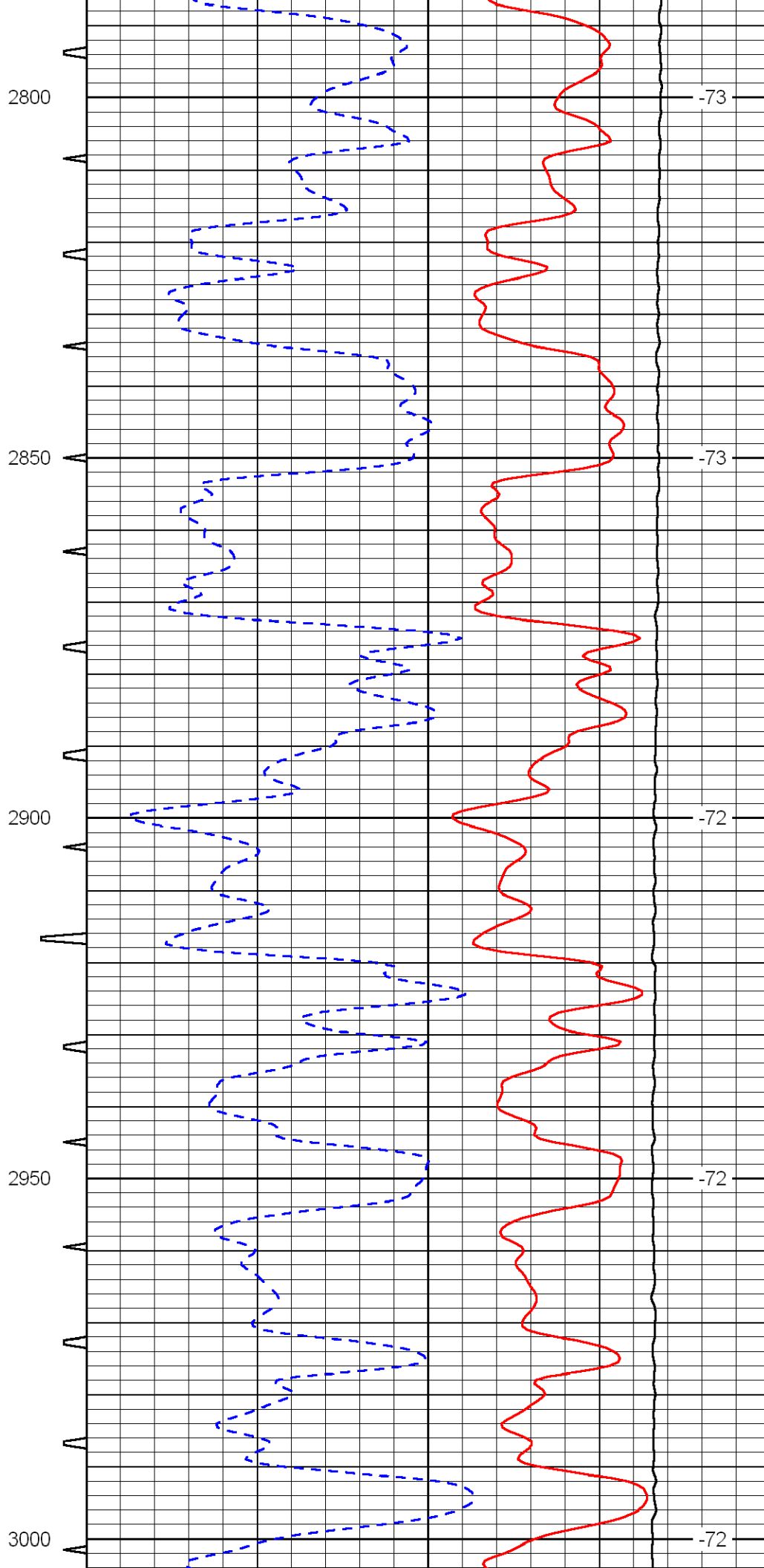
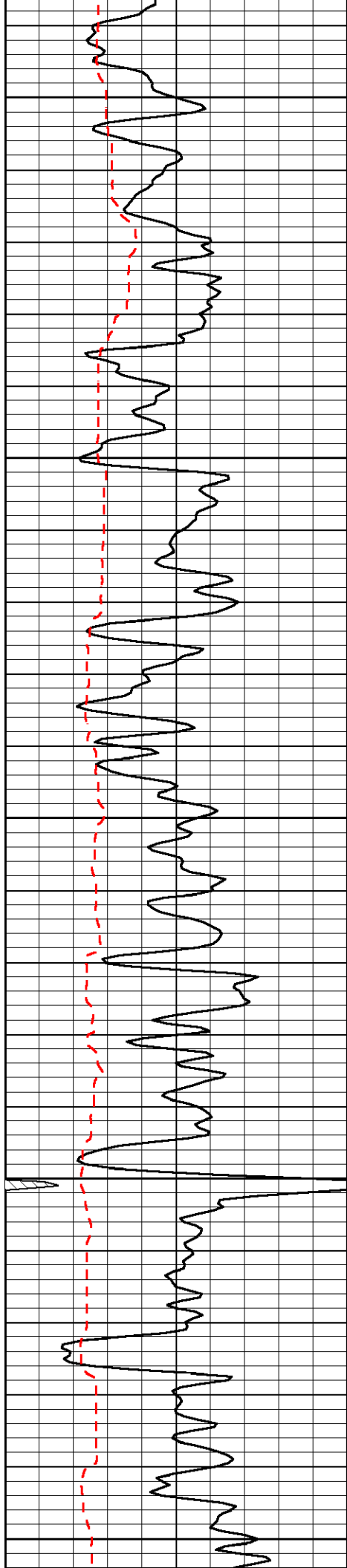


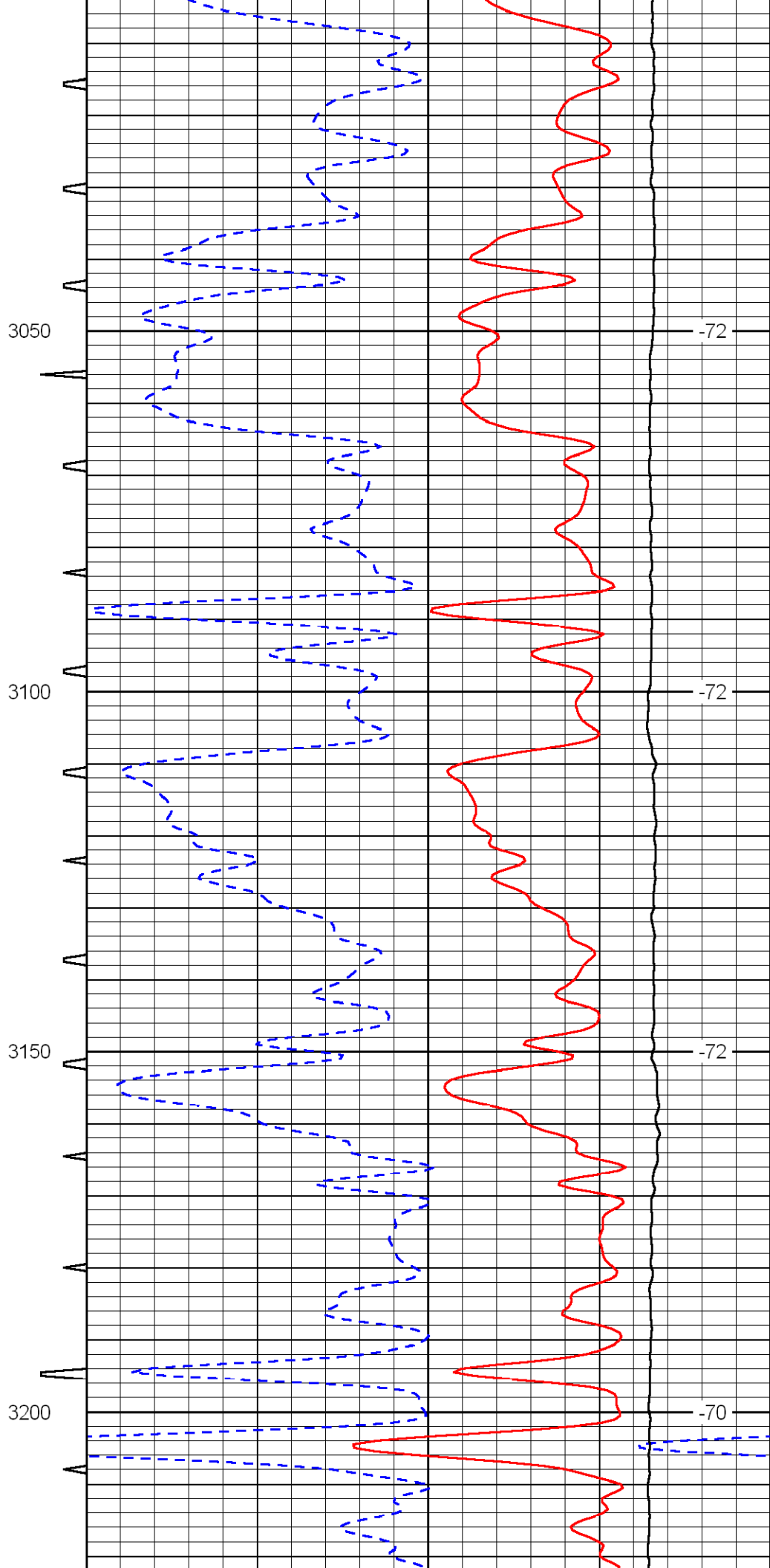
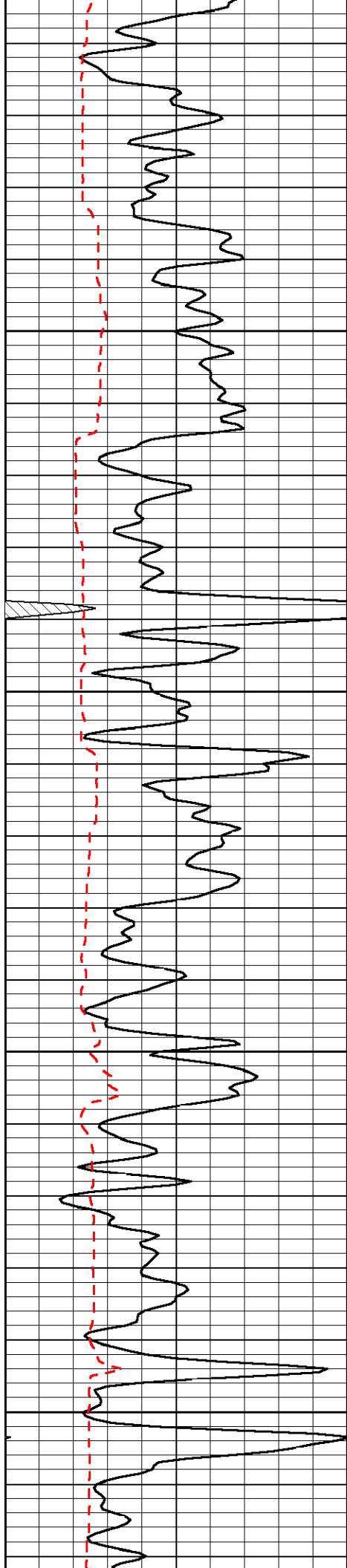


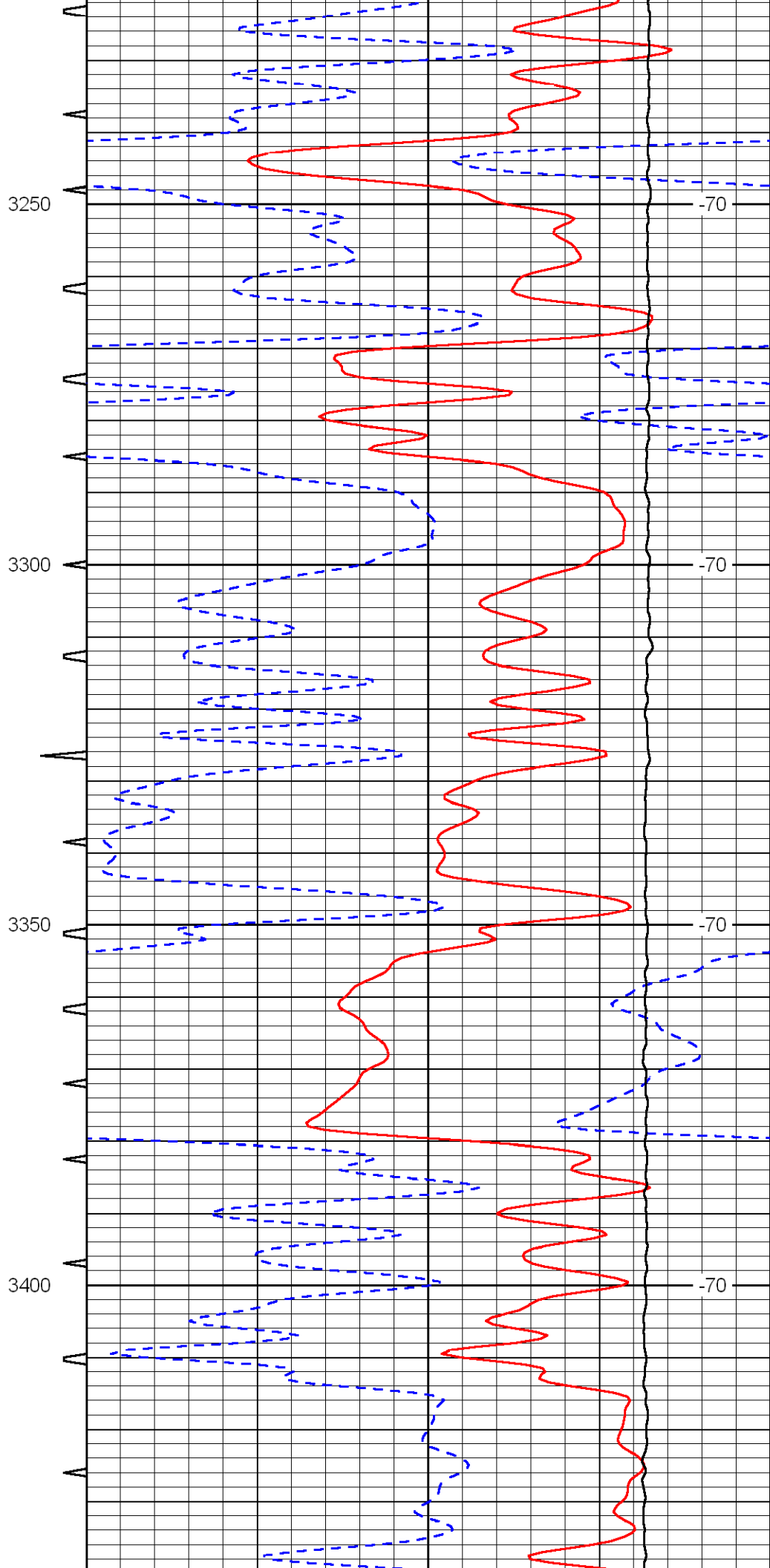
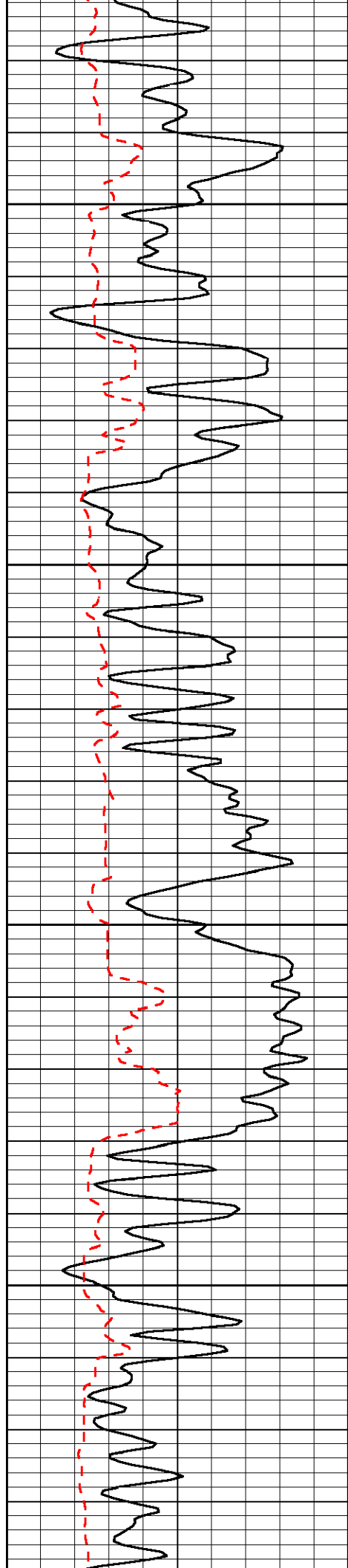


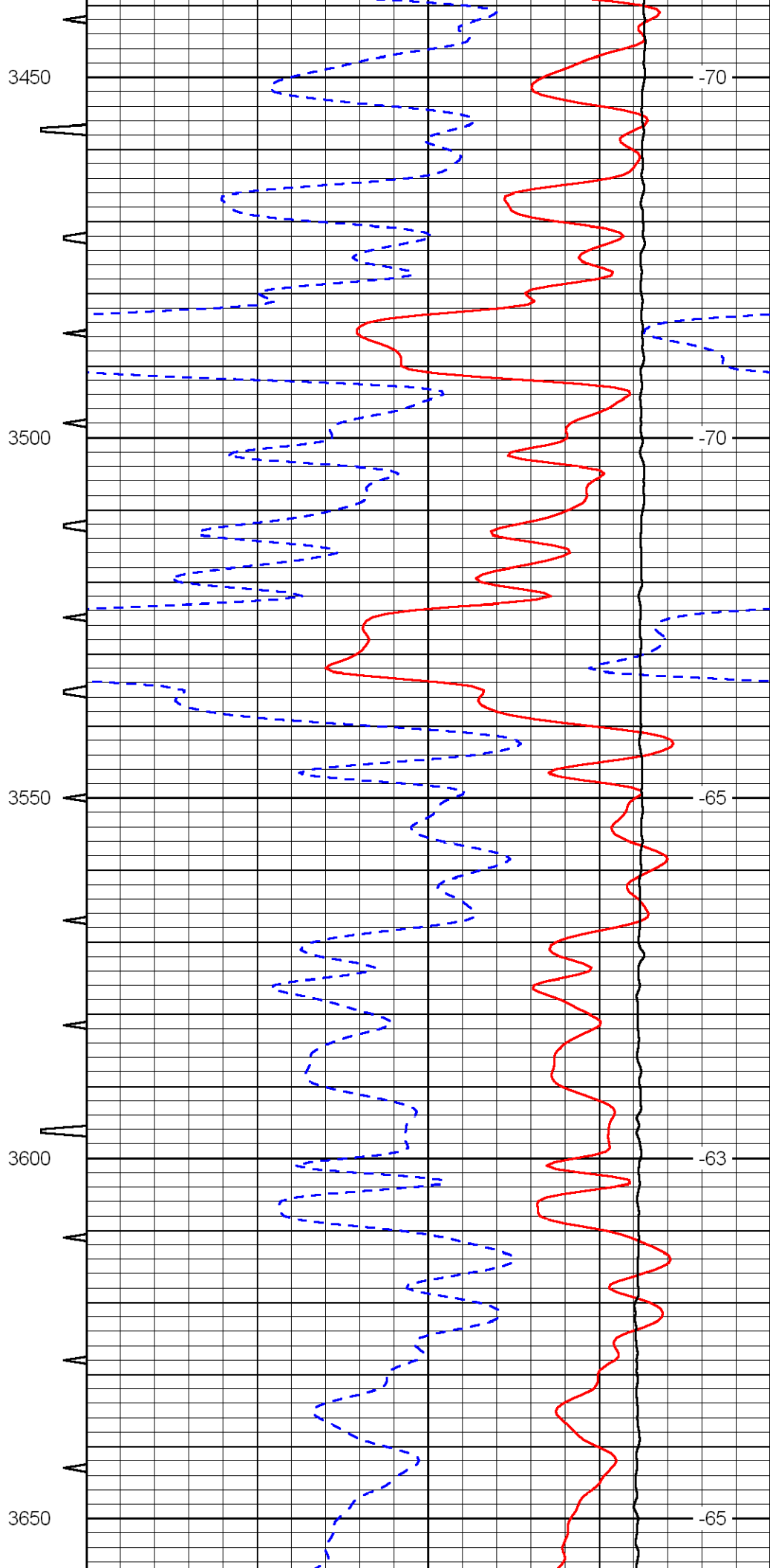
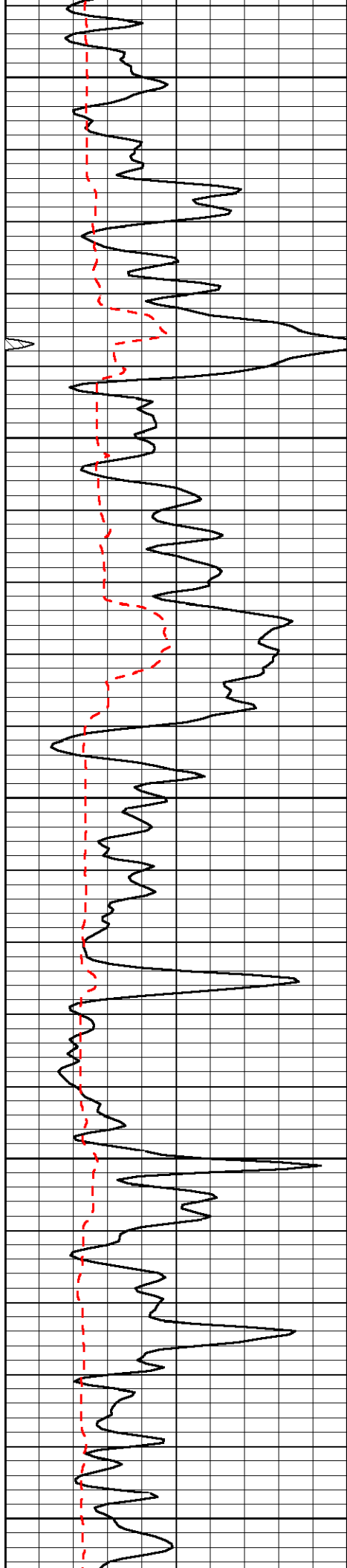


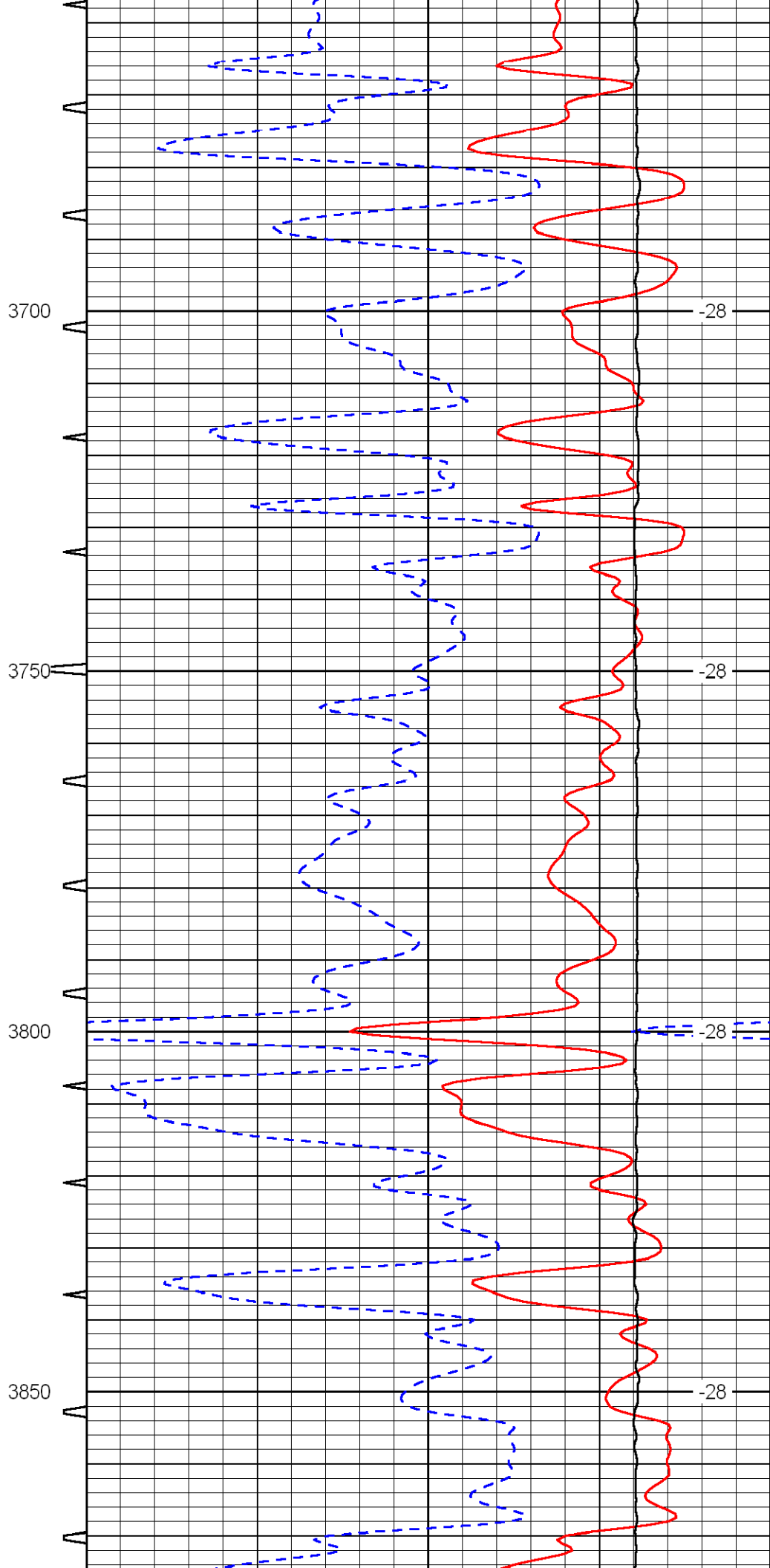
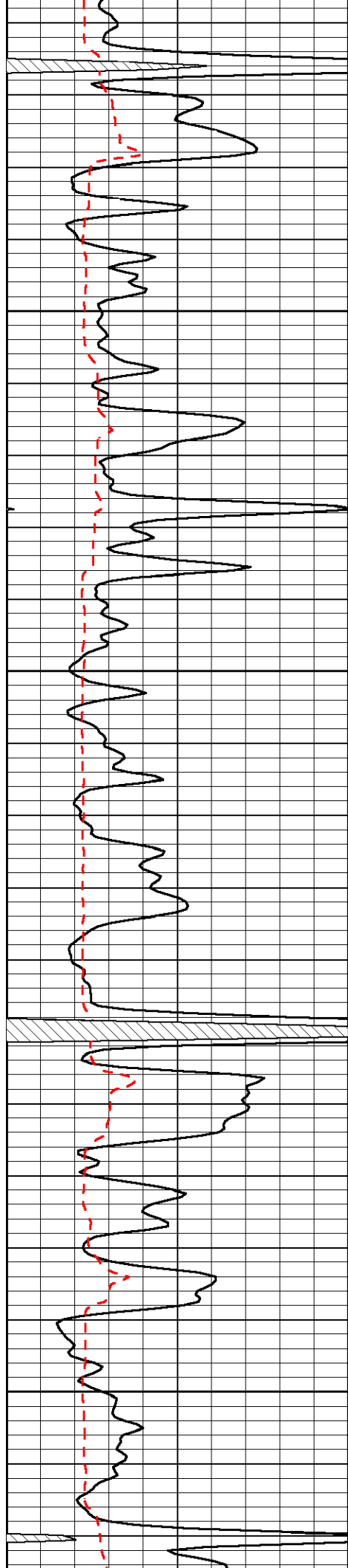












3700

-28

3750

-28

3800

-28

3850

-28

