



Dual Compensated Porosity Log

DIGITAL LOG (785) 625-3858

API No. 15-097-20,401-00-01

Company **Charles Griffin**
 Well **Canton "B" No. 2**
 Field **Glick**
 County **Kiowa** State **Kansas**

Location **1320' FNL & 1250' FWL**

Sec: **21** Twp: **30S** Rge: **17W**

Other Services **DIL**

Permanent Datum **Ground Level** Elevation **2075**
 Log Measured From **Kelly Bushing** 12 Ft. Above Perm. Datum
 Drilling Measured From **Kelly Bushing**

K.B. 2087
 D.F. G.L. 2075

Date **04/21/2009**

Run Number **One**

Type Log **CNL / CDL**

Depth Driller **5493**

Depth Logger **5498**

Bottom Logged Interval **5477**

Top Logged Interval **4000**

Type Fluid In Hole **Starch**

Salinity, PPM CL **38,000**

Density **9.4**

Level **Full**

Max. Rec. Temp. F **133**

Operating Rig Time **3 Hours**

Equipment -- Location **10 Hays**

Recorded By **Jason Wallbrock**

Witnessed By **Bruce Reed**

Run No	Bit	Borehole Record		Casing Record	
		From	To	From	To
1	12.25	00	523	8.625	24#
2	7.875	523	5493		

<<< Fold Here >>>

All interpretations are opinions based on inferences from electrical or other measurements and we cannot and do not guarantee the accuracy or correctness of any interpretation, and we shall not, except in the case of gross or willful negligence on our part, be liable or responsible for any loss, costs, damages, or expenses incurred or sustained by anyone resulting from any interpretation made by any of our officers, agents or employees. These interpretations are also subject to our general terms and conditions set out in our current Price Schedule.

Comments

Thank you for using Log-Tech, Inc.
(785) 625-3858

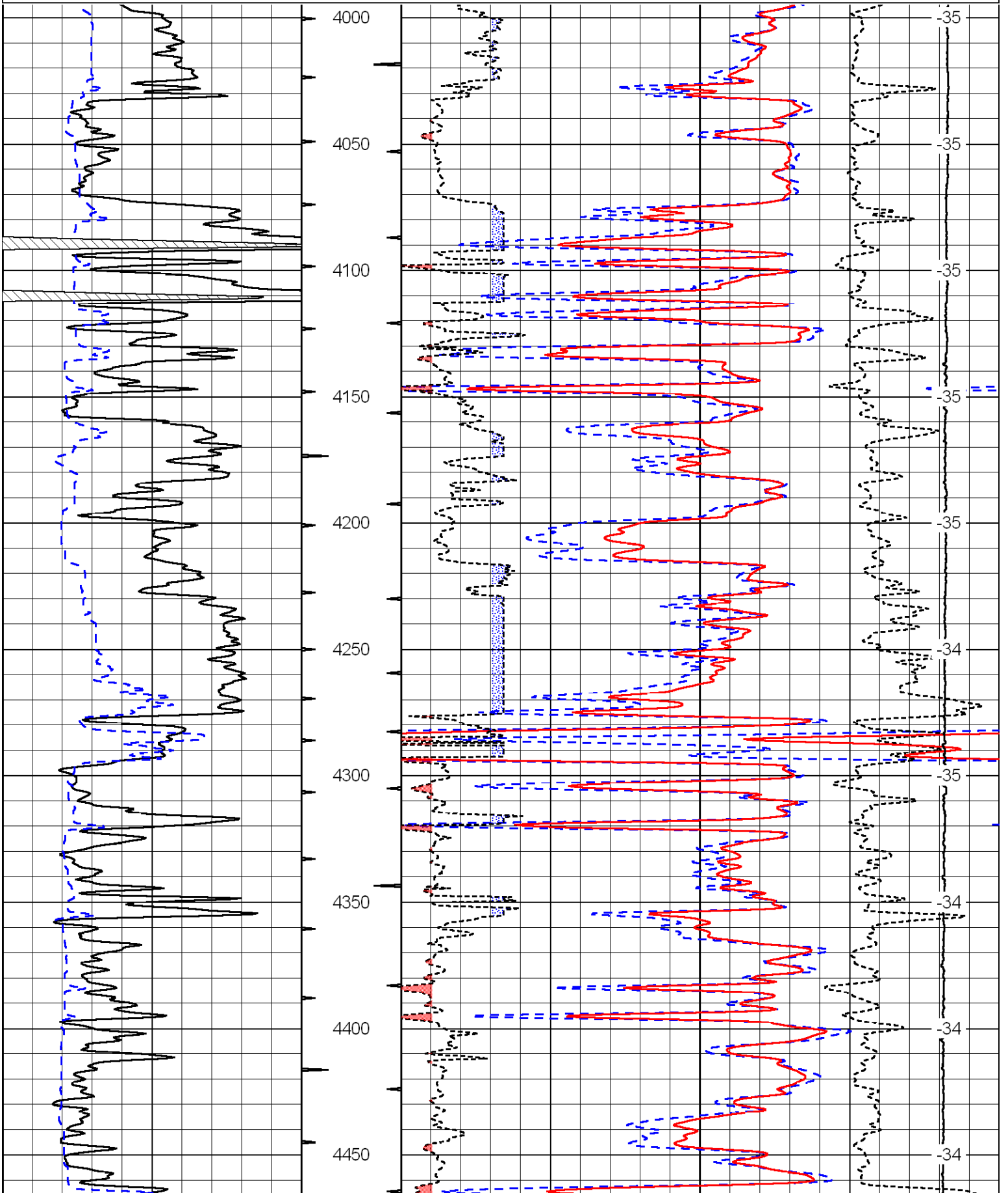
Belvivere 2 S, to rd 79, 5 W, stay to the left on all the curves W Into

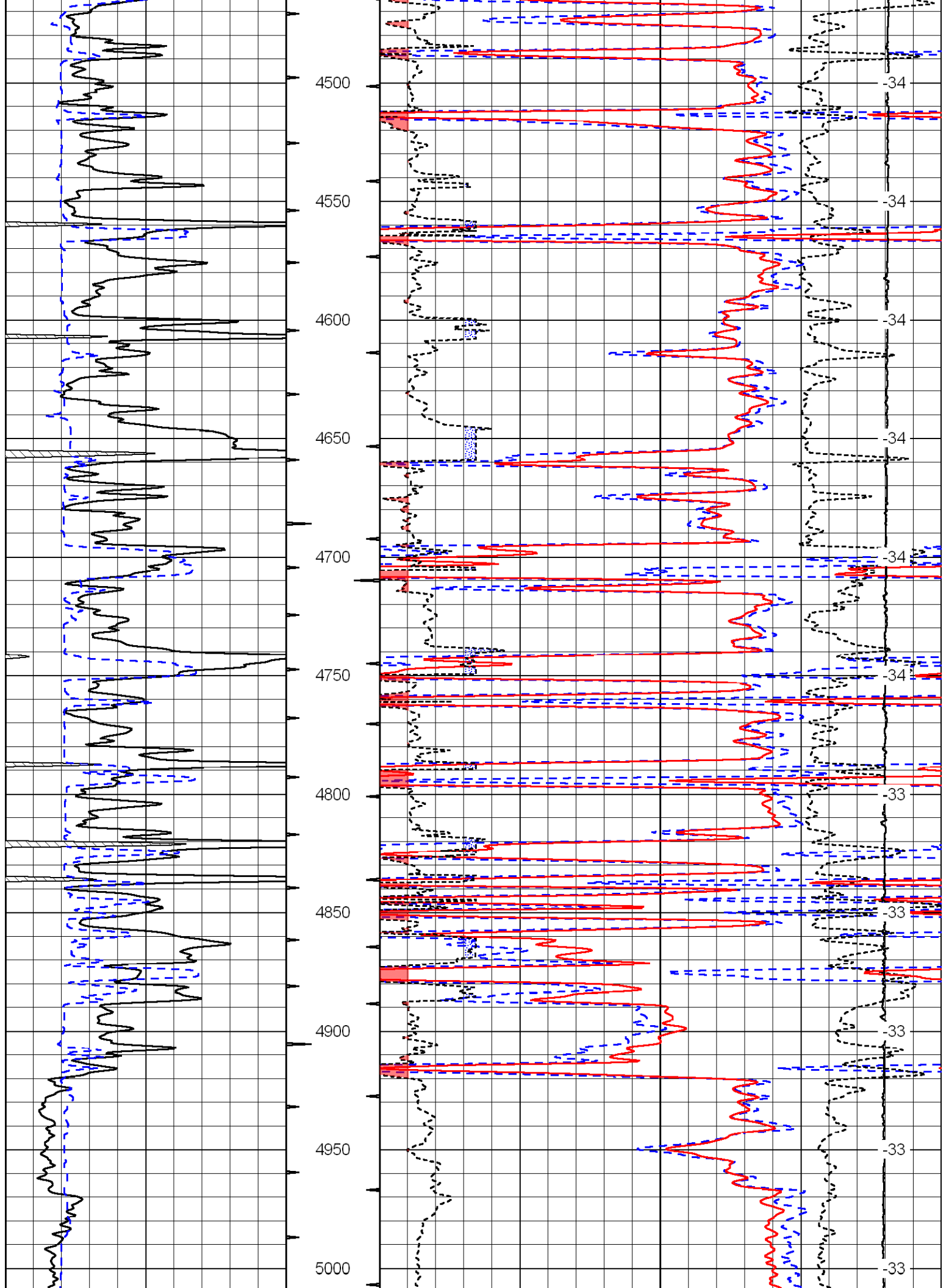
Database File: c:\warrior\data\charles griffin_canton b no. 2\griffhd.db
 Dataset Pathname: dil/grif2in
 Presentation Format: cdl
 Dataset Creation: Tue Apr 21 21:44:11 2009
 Charted by: Depth in Feet scaled 1:600

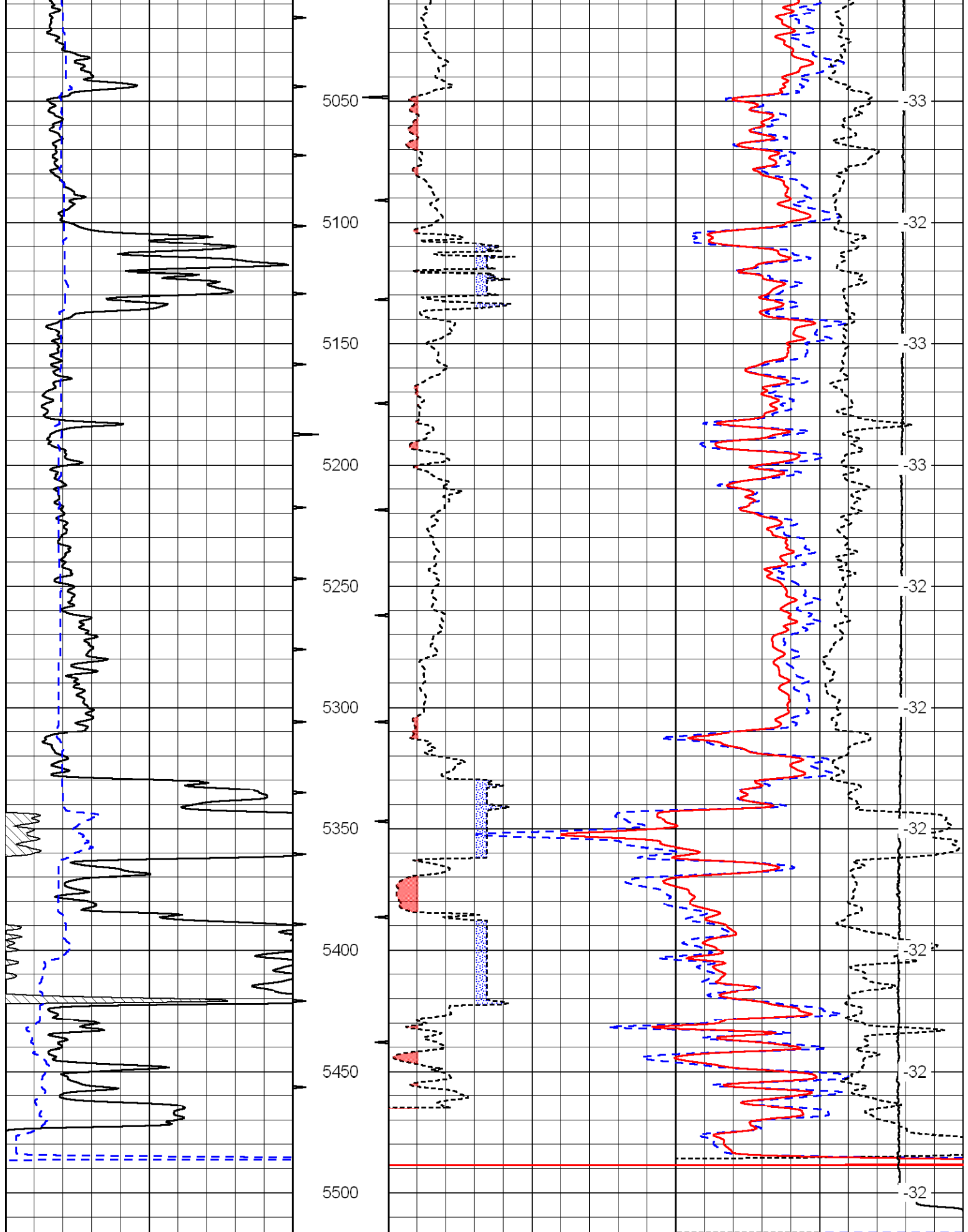
0	Gamma Ray	150
6	Caliper (in)	16

30	Compensated Density (pu)			-10	
2	Bulk Density (g/cc)			3	
15000	Line Tension (lb)			0	
2.625	DGA (g/cc)	3.425	-0.25	Correction (g/cc)	0.25

LSPD
(ft/min)







0	Gamma Ray	150
6	Caliper (in)	16

30	Compensated Density (pu)	-10
2	Bulk Density (g/cc)	3
15000	Line Tension (lb)	0

2.625	DGA (g/cc)	3.425	-0.25	Correction (g/cc)	0.25
-------	------------	-------	-------	-------------------	------

LSPD
(ft/min)

Database File: c:\warrior\data\charles griffin_canton b no. 2\griffhd.db
 Dataset Pathname: dil/grif2in
 Presentation Format: cndlspec
 Dataset Creation: Tue Apr 21 21:44:11 2009
 Charted by: Depth in Feet scaled 1:240

0	Gamma Ray	150
6	Caliper (in)	16

30	Compensated Neutron (Limestone) (pu)			-10	
30	Compensated Density (2.71 ma) (pu)			-10	
2.625	DGA (g/cc)	3.425	-0.25	Correction (g/cc)	0.25
15000	Line Tension (lb)			0	

LSPD
(ft/min)

