



# Dual Induction Log

DIGITAL LOG (785) 625-3858

API No.	15-097-20,401-00-01	
Company	Charles Griffin	
Well	Canton "B" No. 2	
Field	Glick	
County	Kiowa	State
		Kansas
Location	1320' FNL & 1250' FWL	
Sec: 21	Twp: 30S	Rge: 17W
Permanent Datum	Ground Level	Elevation 2075
Log Measured From	Kelly Bushing	12 Ft. Above Perm. Datum
Drilling Measured From	Kelly Bushing	K.B. 2087
		D.F. 2075
		G.L. 2075
		Other Services CNL/CDL

Date	04/21/2009	
Run Number	One	
Depth Driller	5493	
Depth Logger	5498	
Bottom Logged Interval	5497	
Top Log Interval	500	
Casing Driller	8.625 @ 523	
Casing Logger	524	
Bit Size	7.875	
Type Fluid in Hole	Starch	
Salinity, ppm CL	38,000	
Density / Viscosity	9.4	51
pH / Fluid Loss	7.0	24.0
Source of Sample	Flowline	
Rm @ Meas. Temp	.04	@ 65
Rmf @ Meas. Temp	.03	@ 65
Rmc @ Meas. Temp	.054	@ 65
Source of Rmf / Rmc	Charts	
Rm @ BHT	.02	@ 133
Operating Rig Time	3 Hours	
Max Rec. Temp. F	133	
Equipment Number	10	
Location	Hays	
Recorded By	Jason Wellbrock	
Witnessed By	Bruce Reed	

<<< Fold Here >>>

All interpretations are opinions based on inferences from electrical or other measurements and we cannot and do not guarantee the accuracy or correctness of any interpretation, and we shall not, except in the case of gross or willful negligence on our part, be liable or responsible for any loss, costs, damages, or expenses incurred or sustained by anyone resulting from any interpretation made by any of our officers, agents or employees. These interpretations are also subject to our general terms and conditions set out in our current Price Schedule.

### Comments

Thank you for using Log-Tech, Inc.  
(785) 625-3858

Belvivere 2 S, to rd 79, 5 W, stay to the left on all the curves W Into

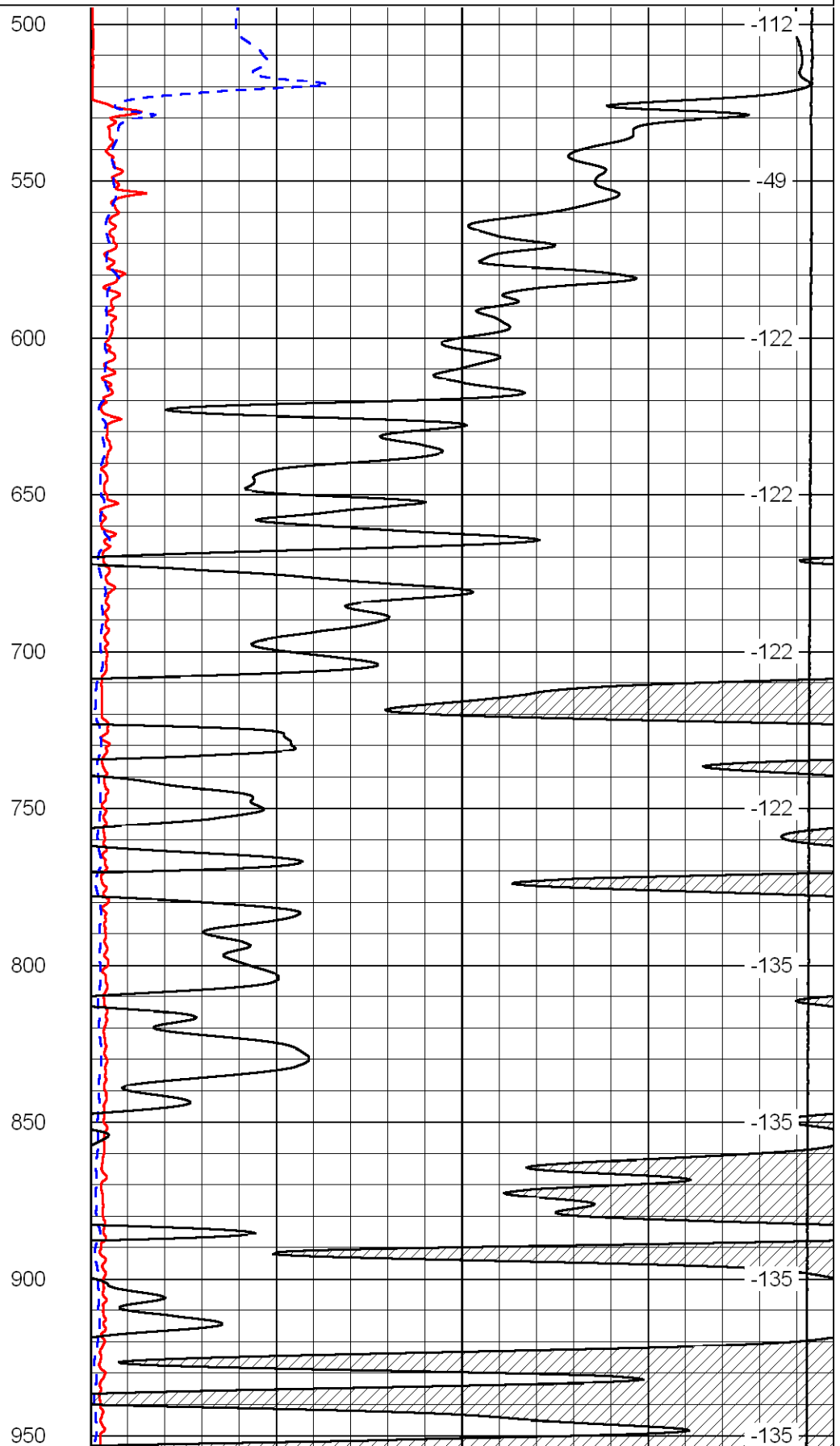
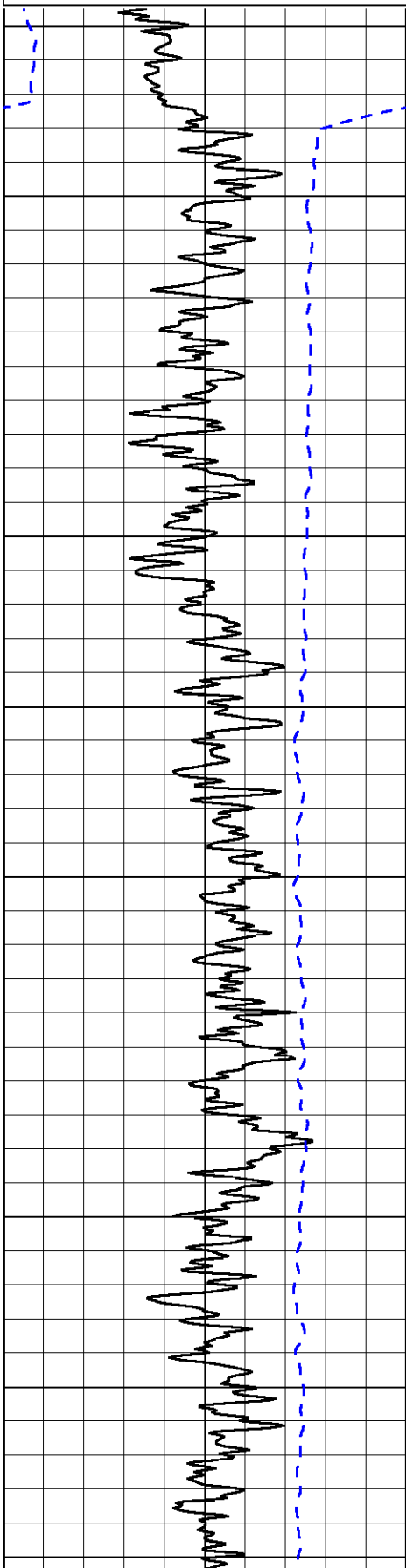
Database File: c:\warrior\data\charles griffin\_canton b no. 2\griffhd.db  
 Dataset Pathname: dil/grif2in  
 Presentation Format: dil2in  
 Dataset Creation: Tue Apr 21 21:44:11 2009  
 Charted by: Depth in Feet scaled 1:600

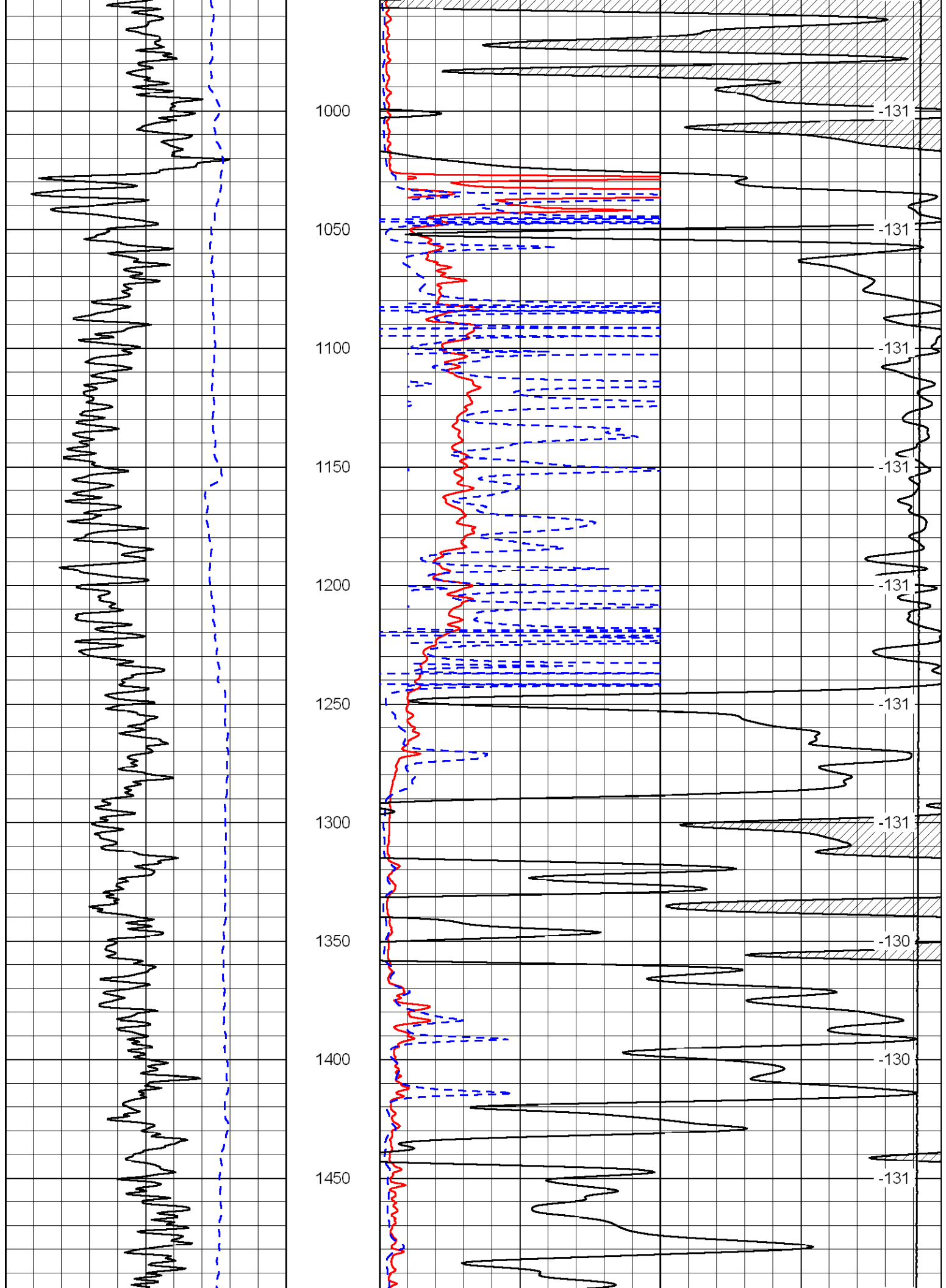
0 Gamma Ray 150  
-200 SP (MV) 0

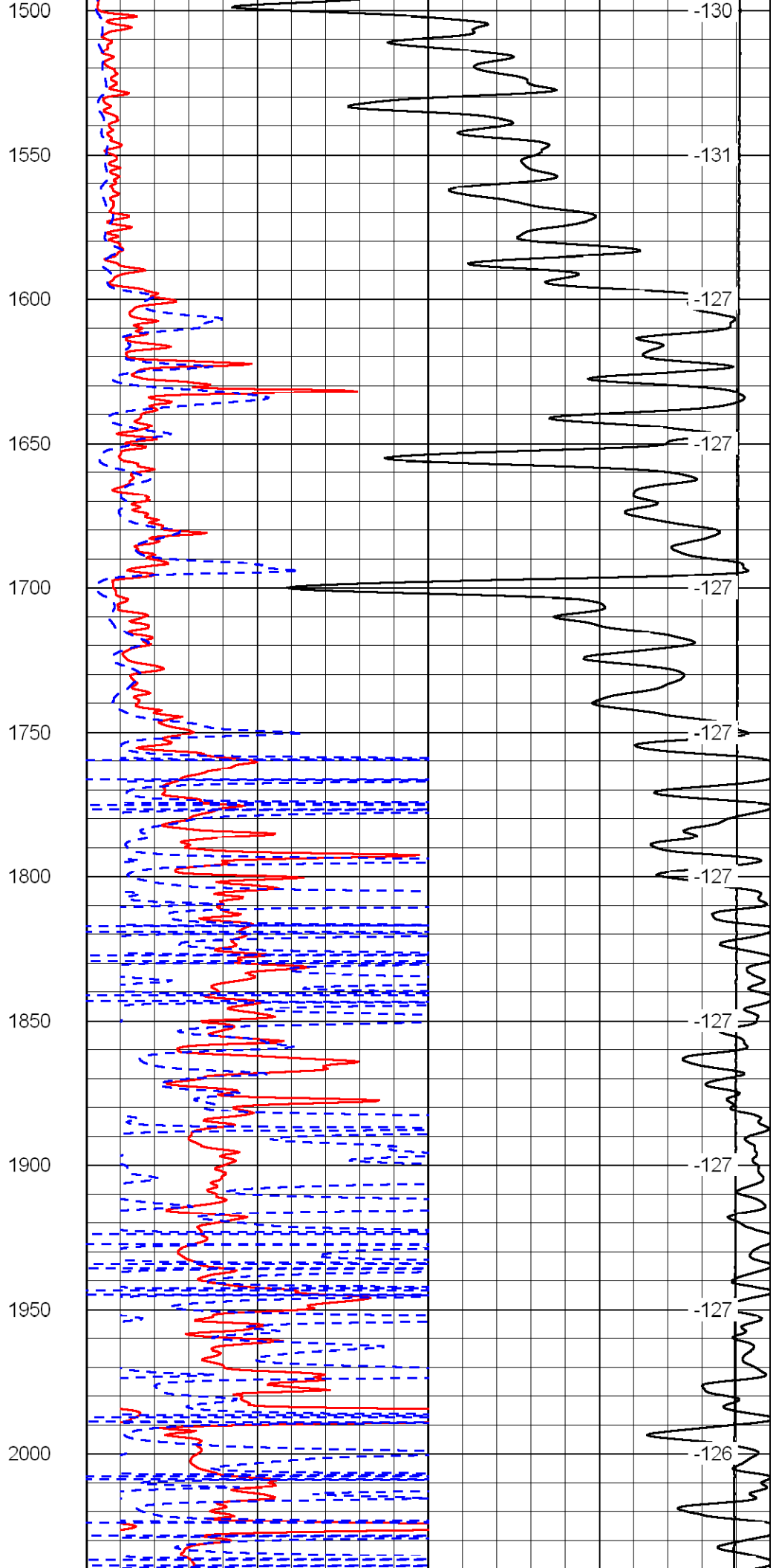
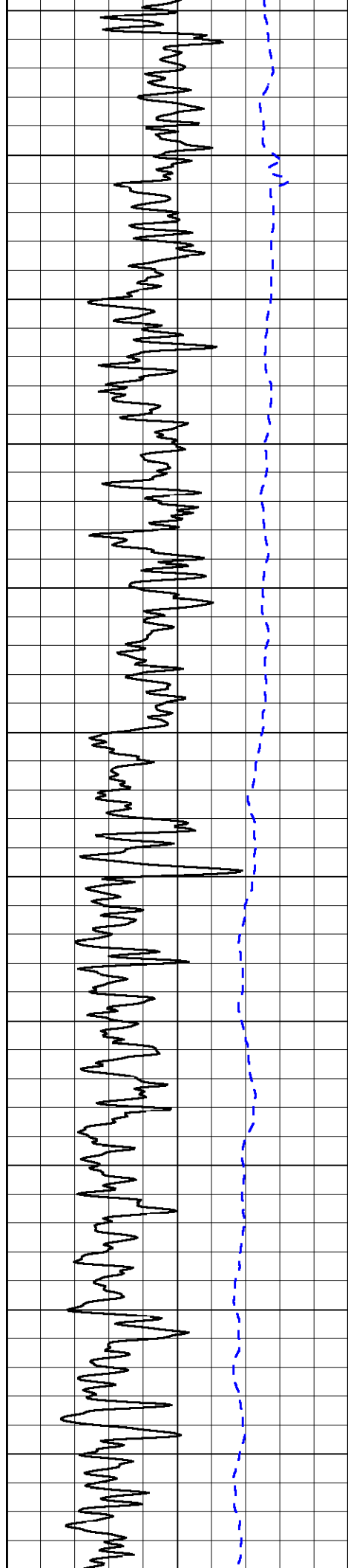
0 Shallow Resistivity (Ohm-m) 50  
0 Deep Resistivity (Ohm-m) 50  
1000 Conductivity (mmho/m) 0  
15000 Line Tension (lb) 0

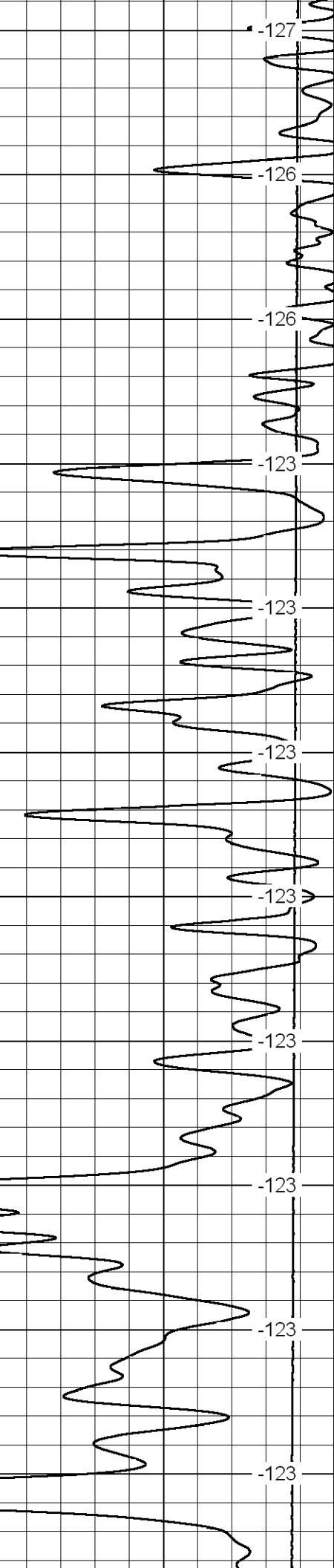
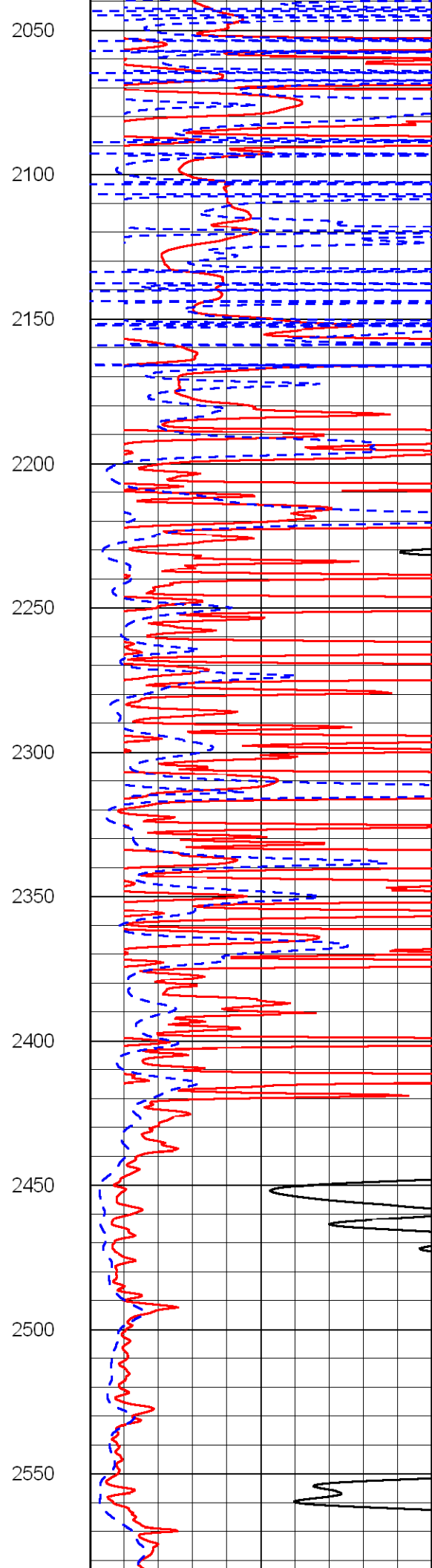
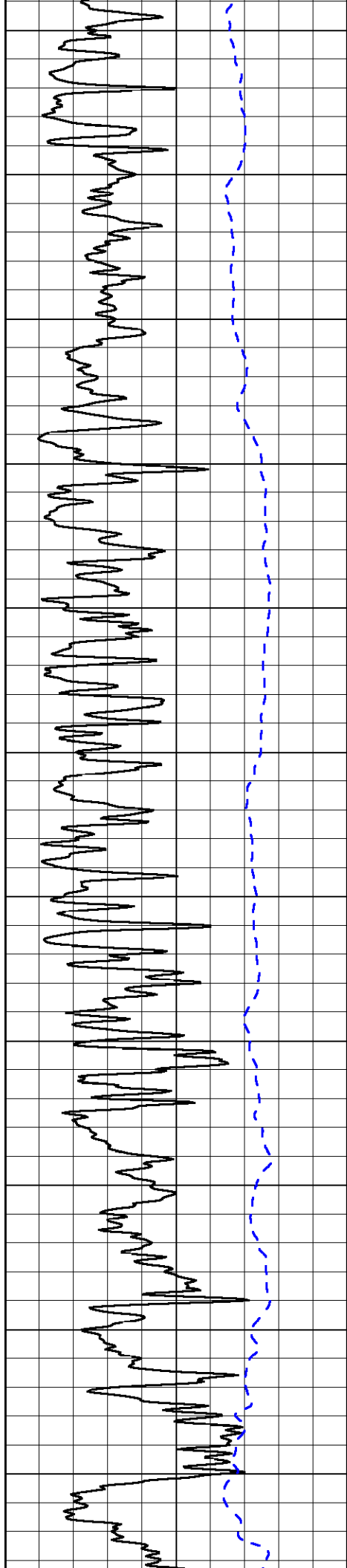
LSPD  
(ft/min)

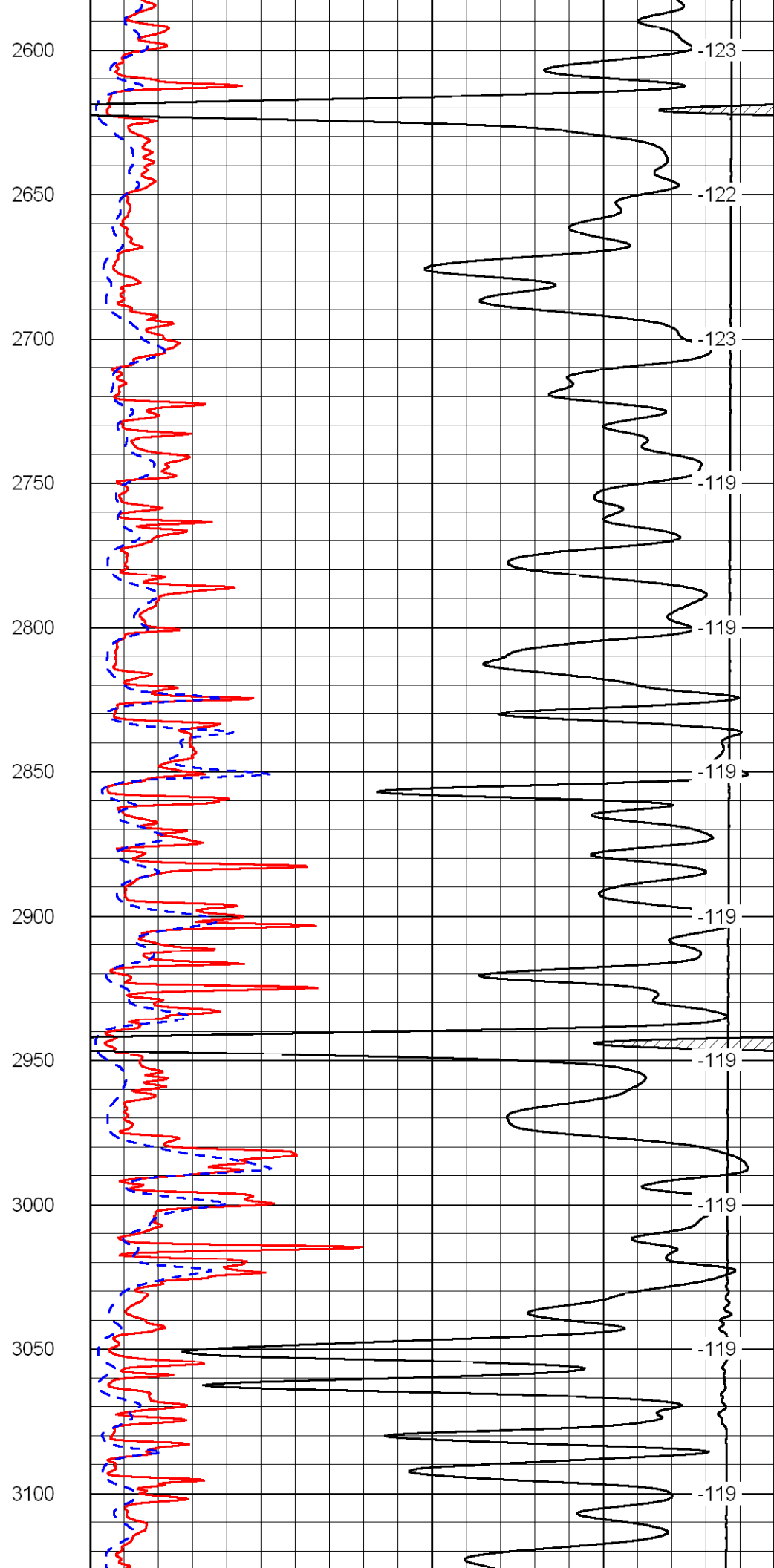
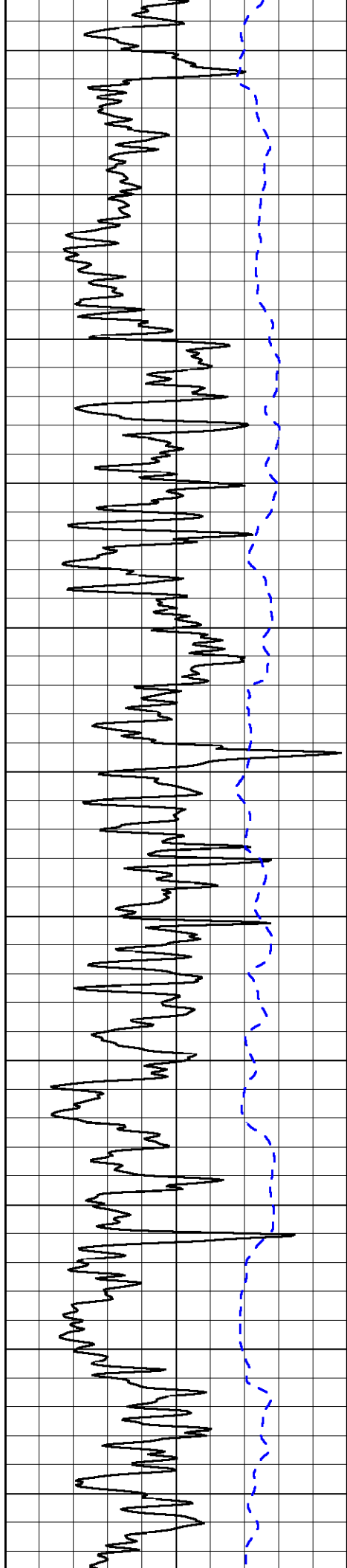
Shallow Resistivity  
50 (Ohm-m) 500  
50 Deep Resistivity (Ohm-m) 500

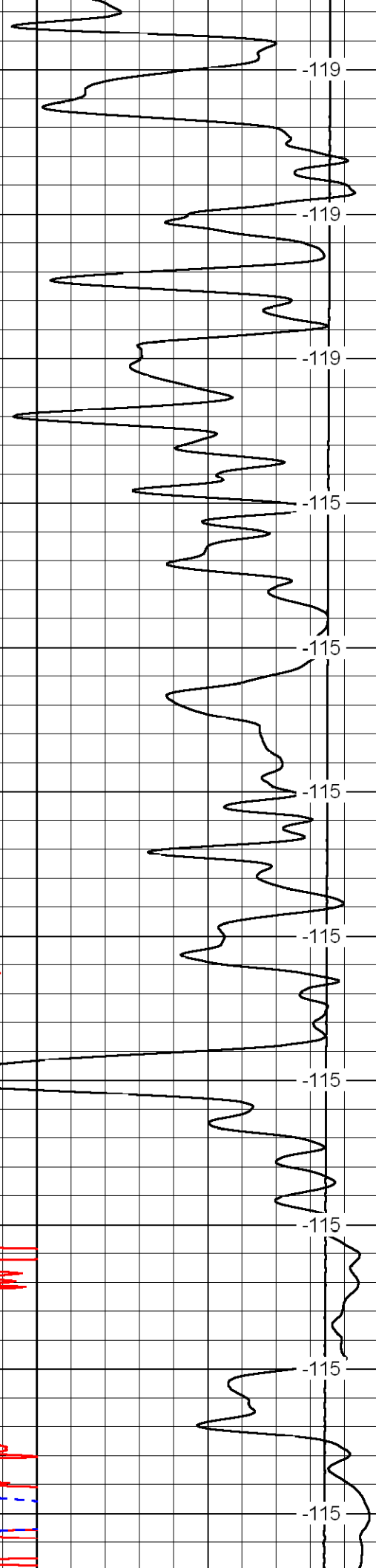
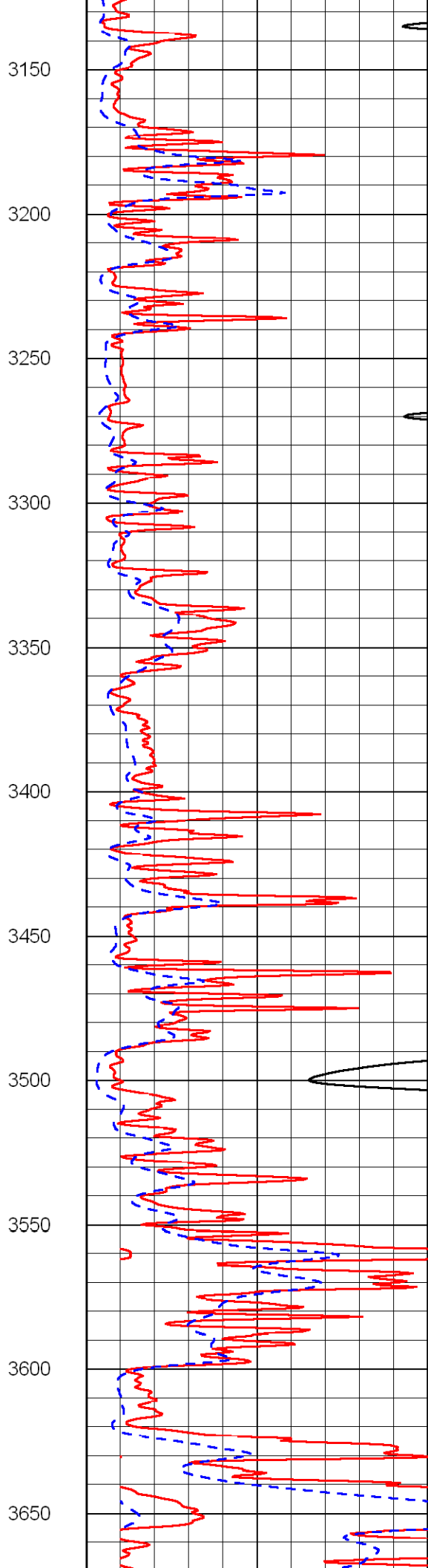
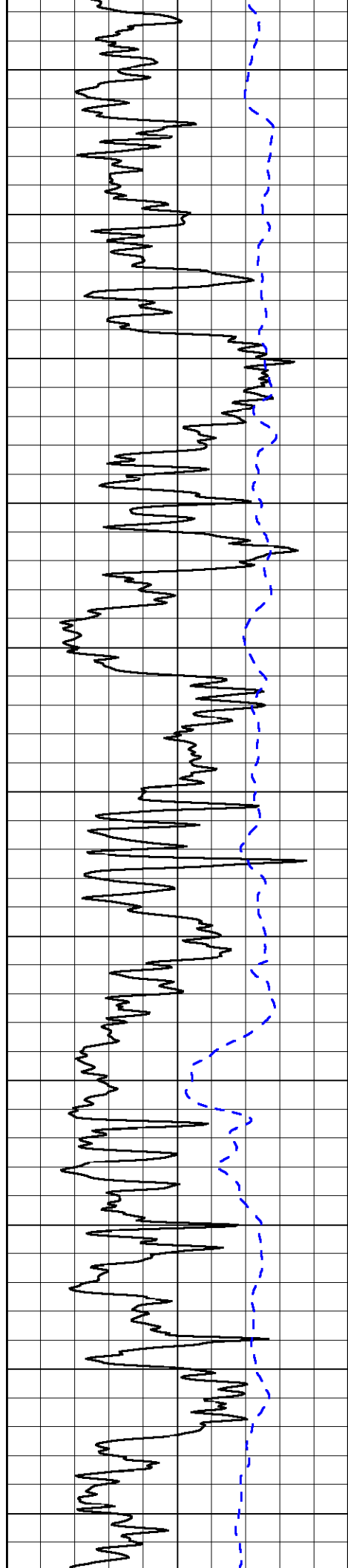


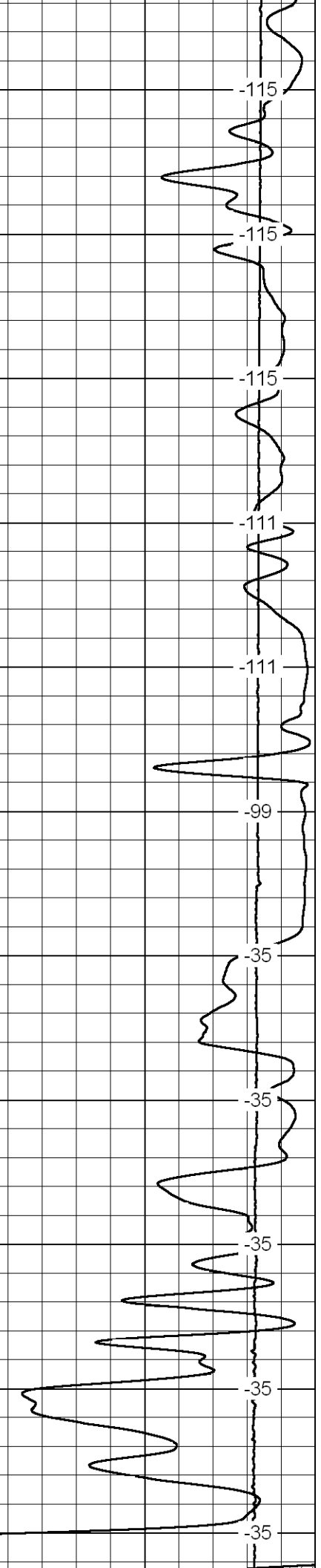
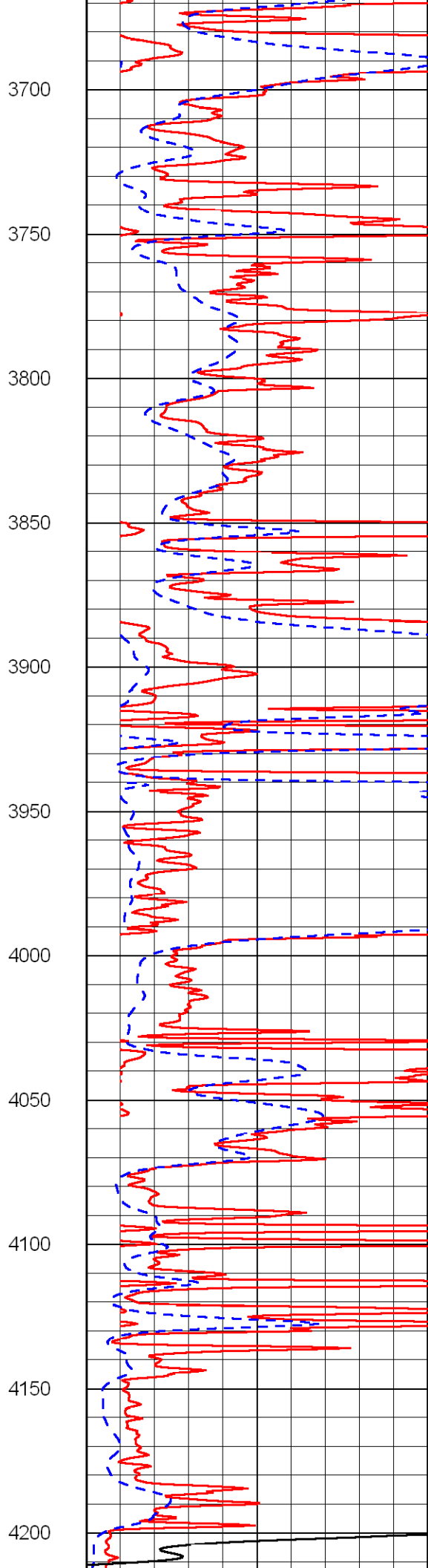
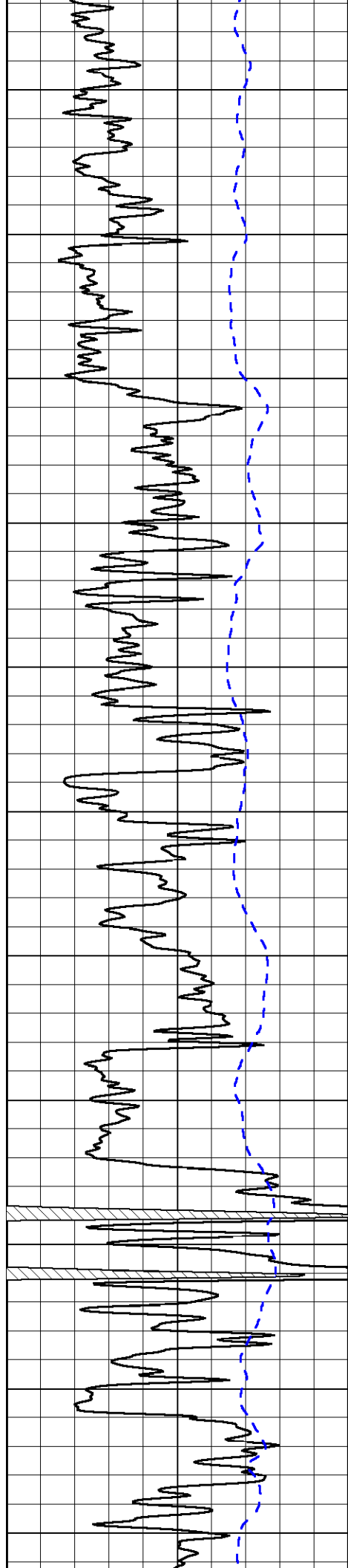


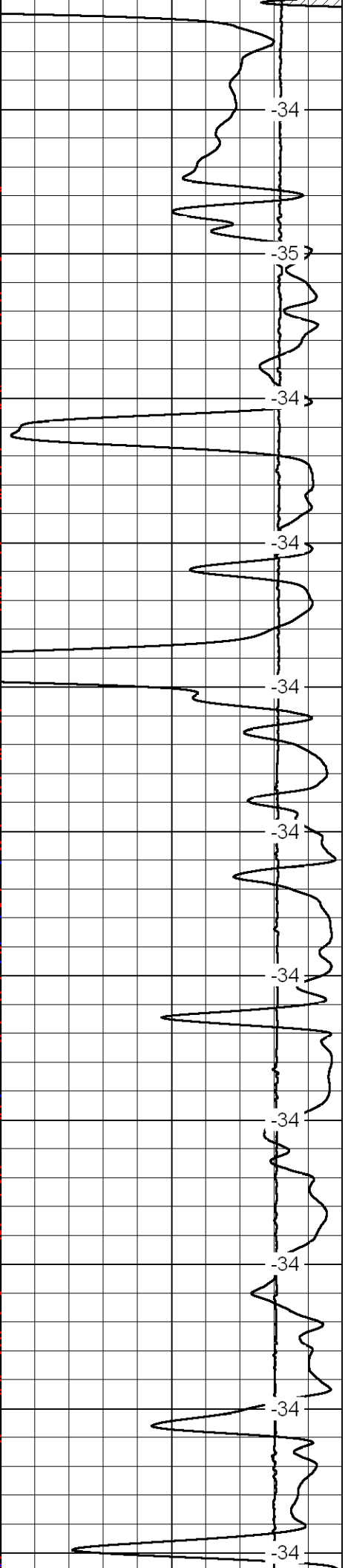
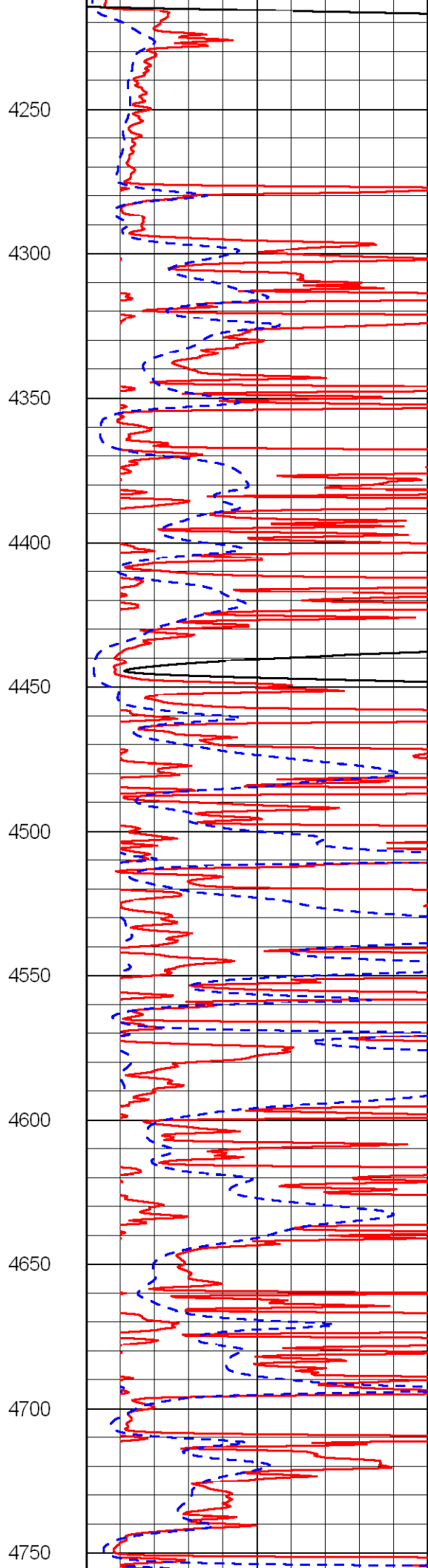
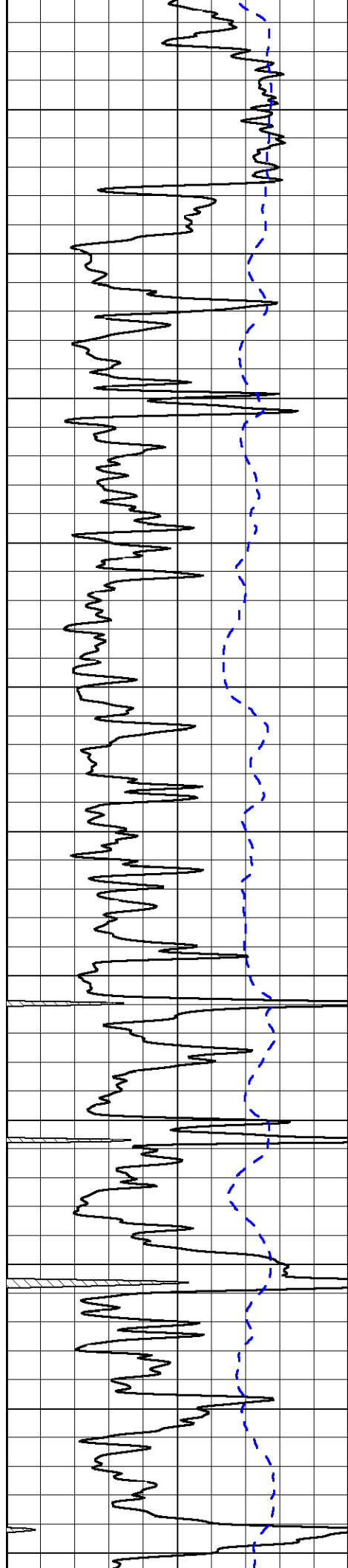


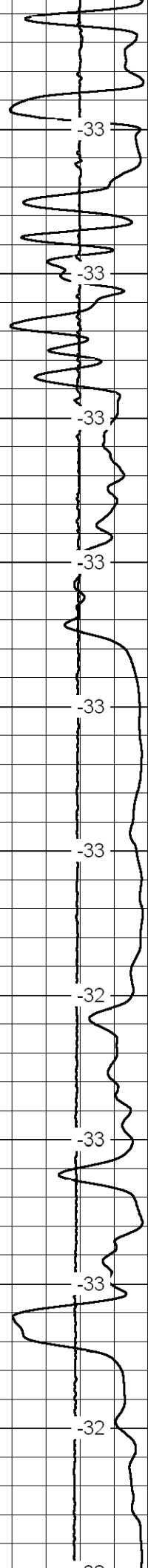
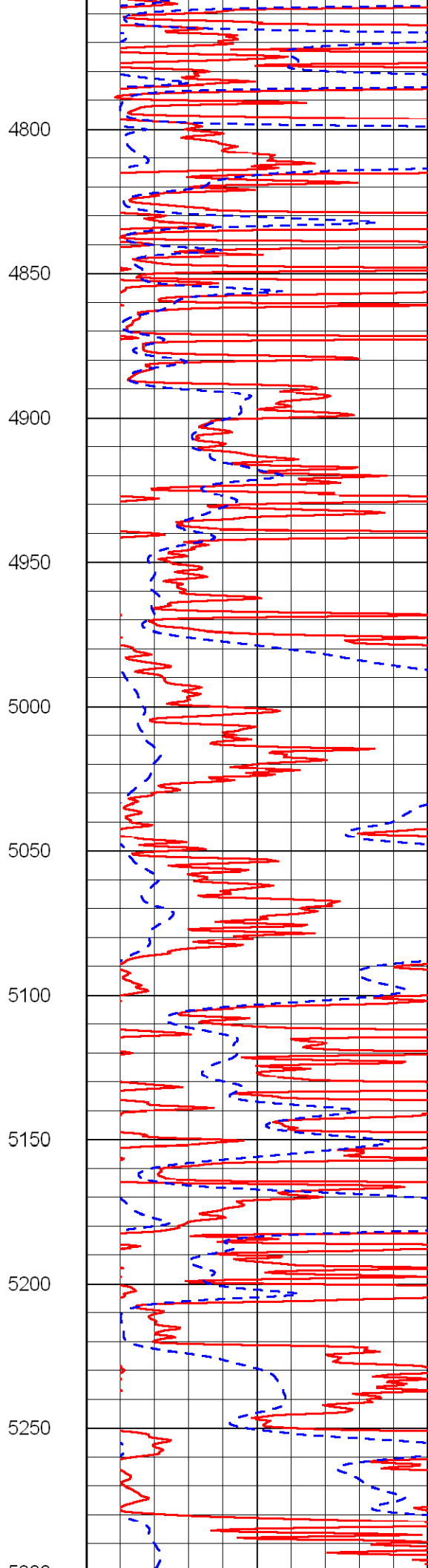
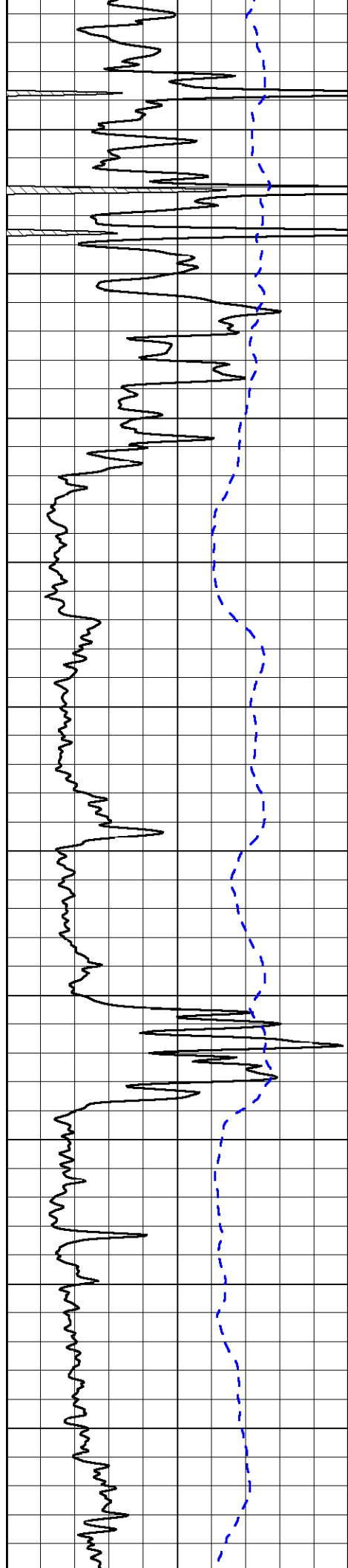


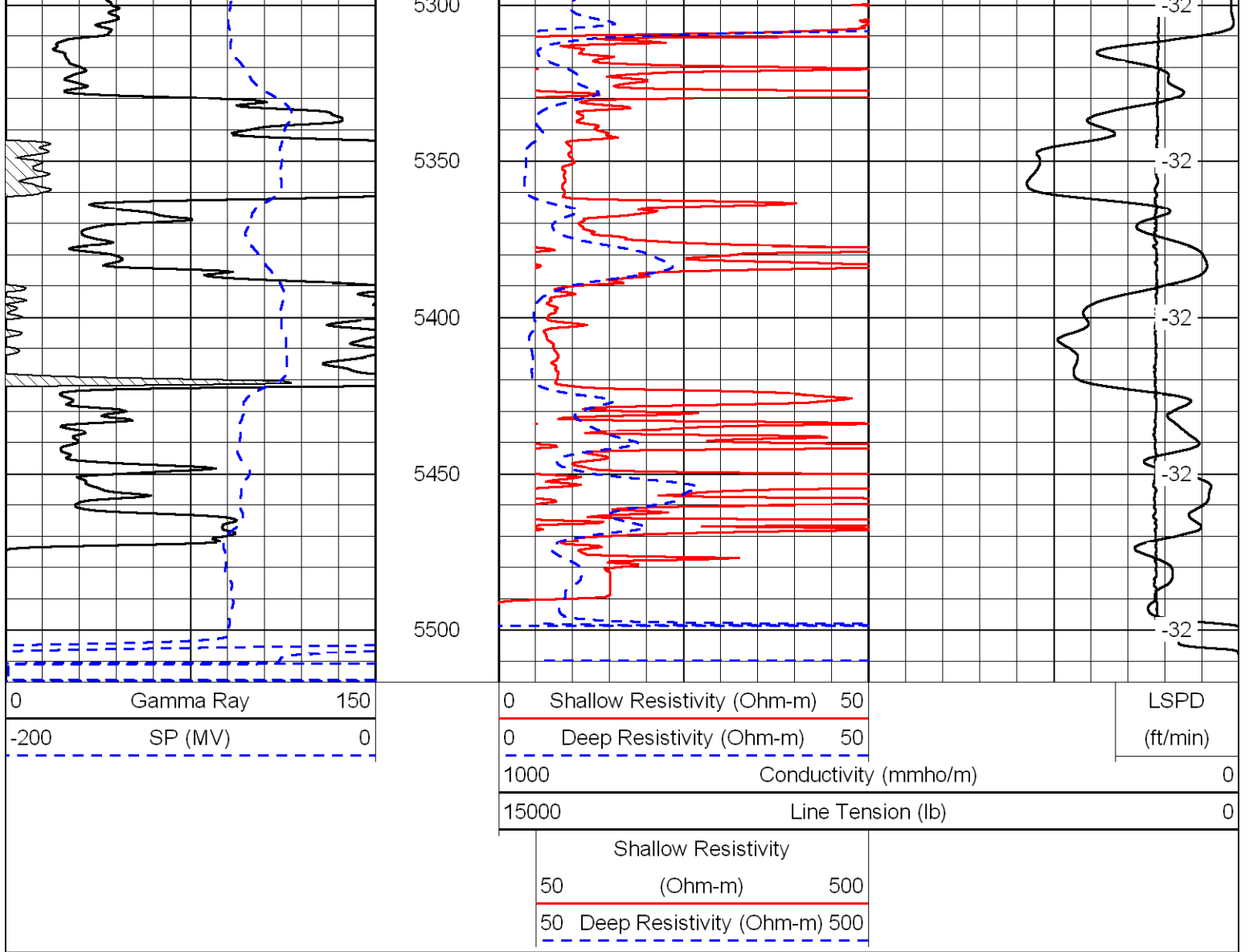




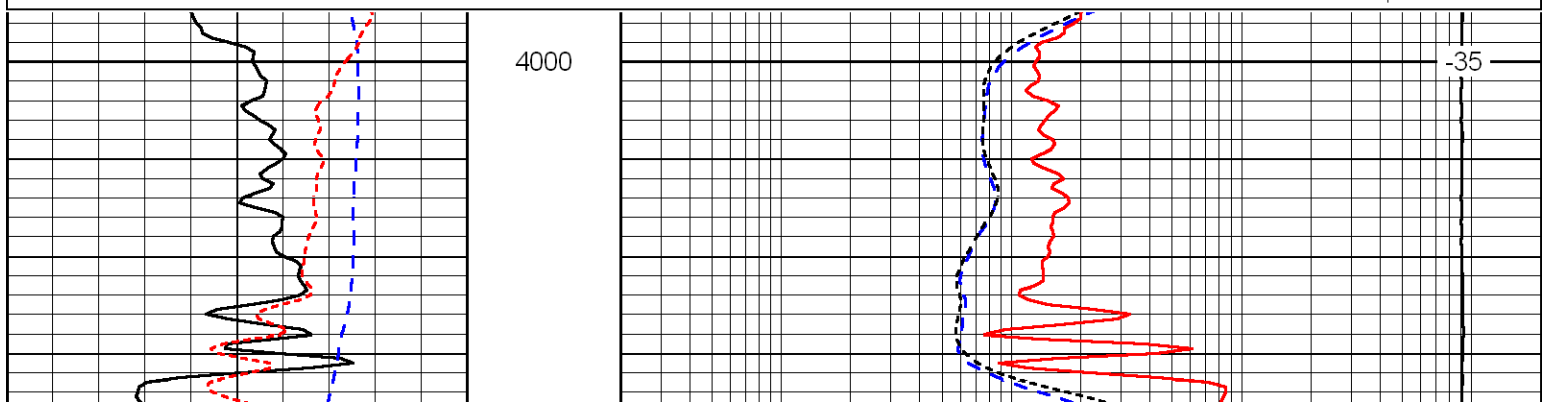
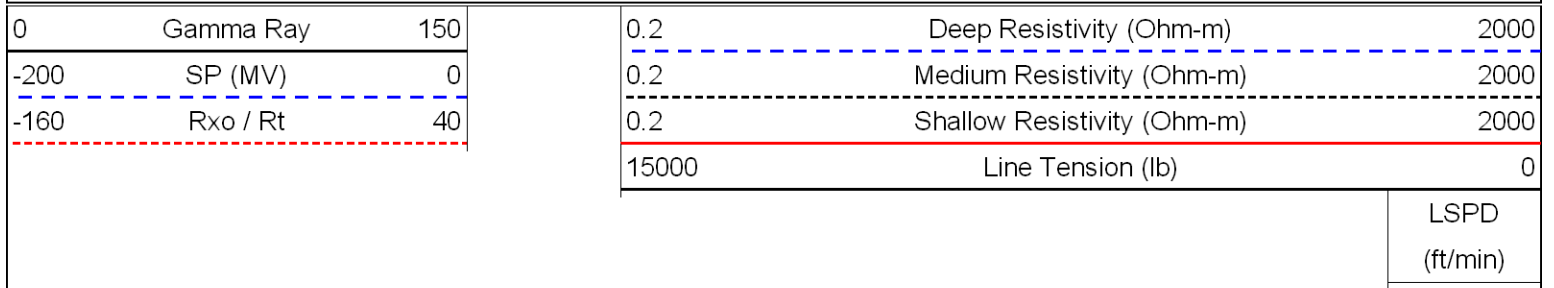


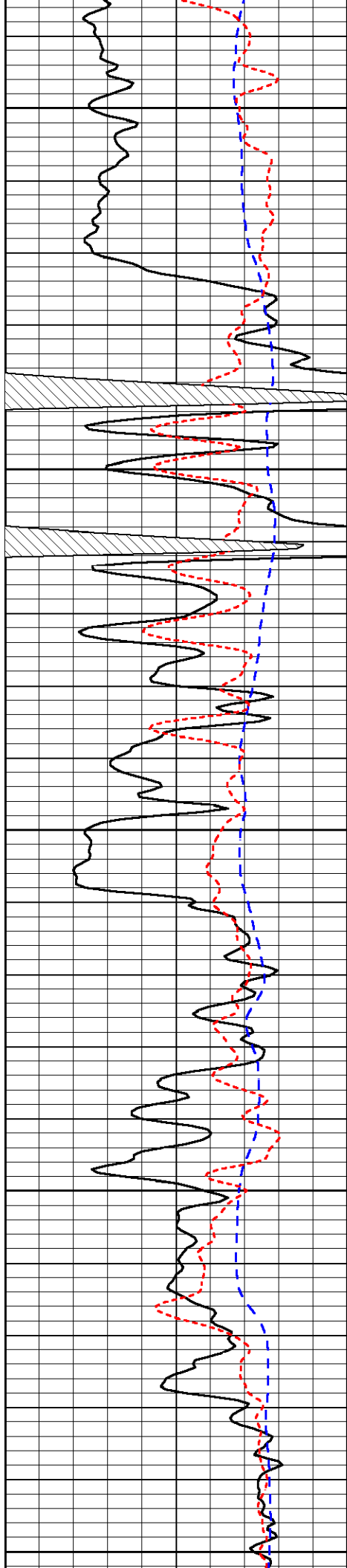






Database File: c:\warrior\data\charles griffin\_canton b no. 2\griffhd.db  
 Dataset Pathname: dil/grif2in  
 Presentation Format: dil  
 Dataset Creation: Tue Apr 21 21:44:11 2009  
 Charted by: Depth in Feet scaled 1:240





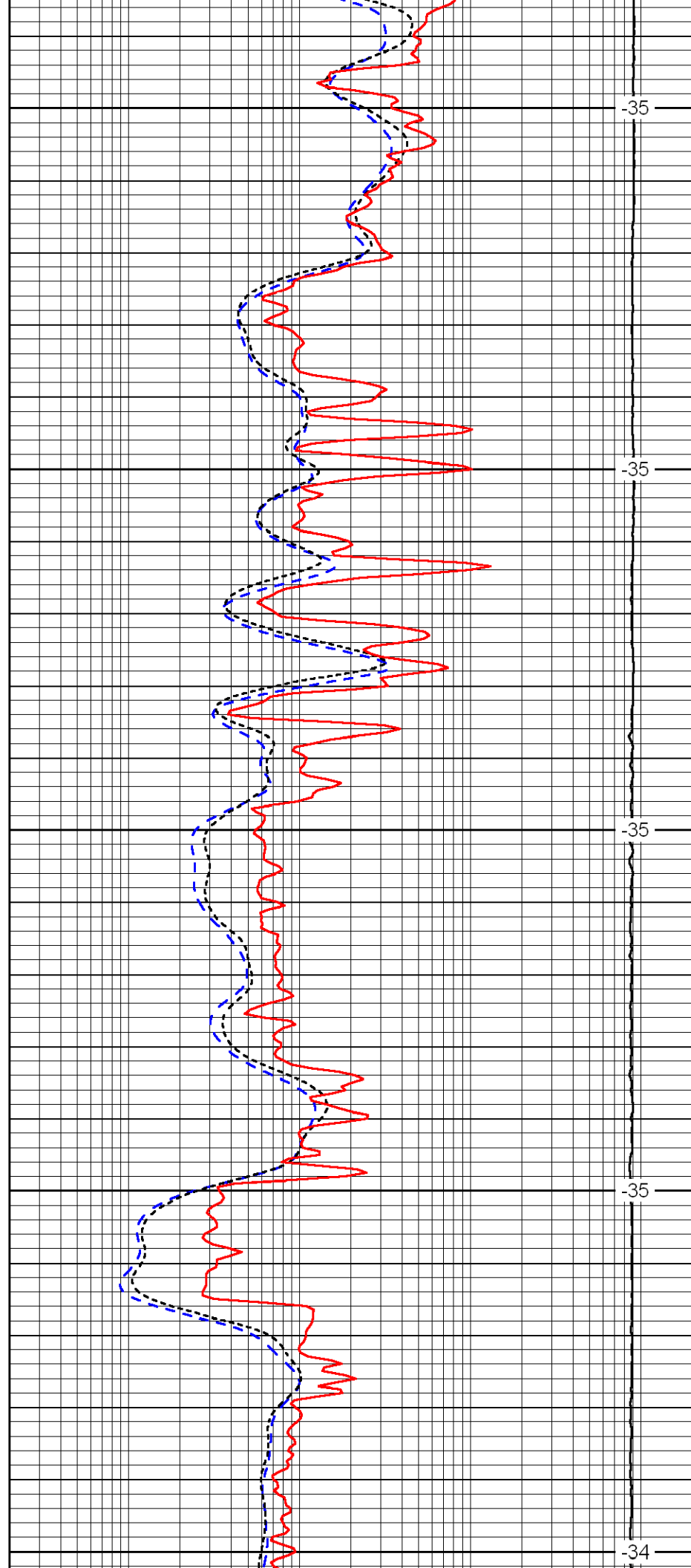
4050

4100

4150

4200

4250



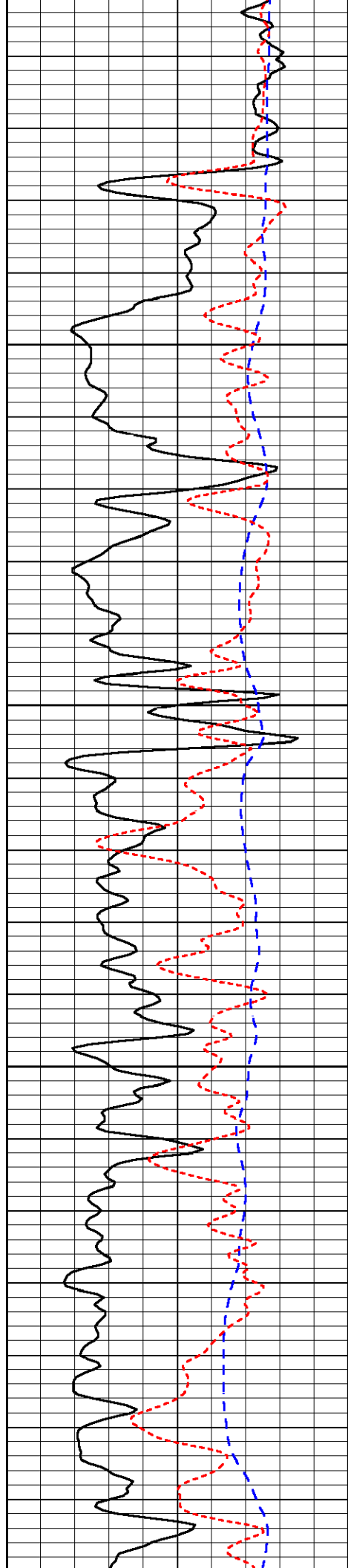
-35

-35

-35

-35

-34

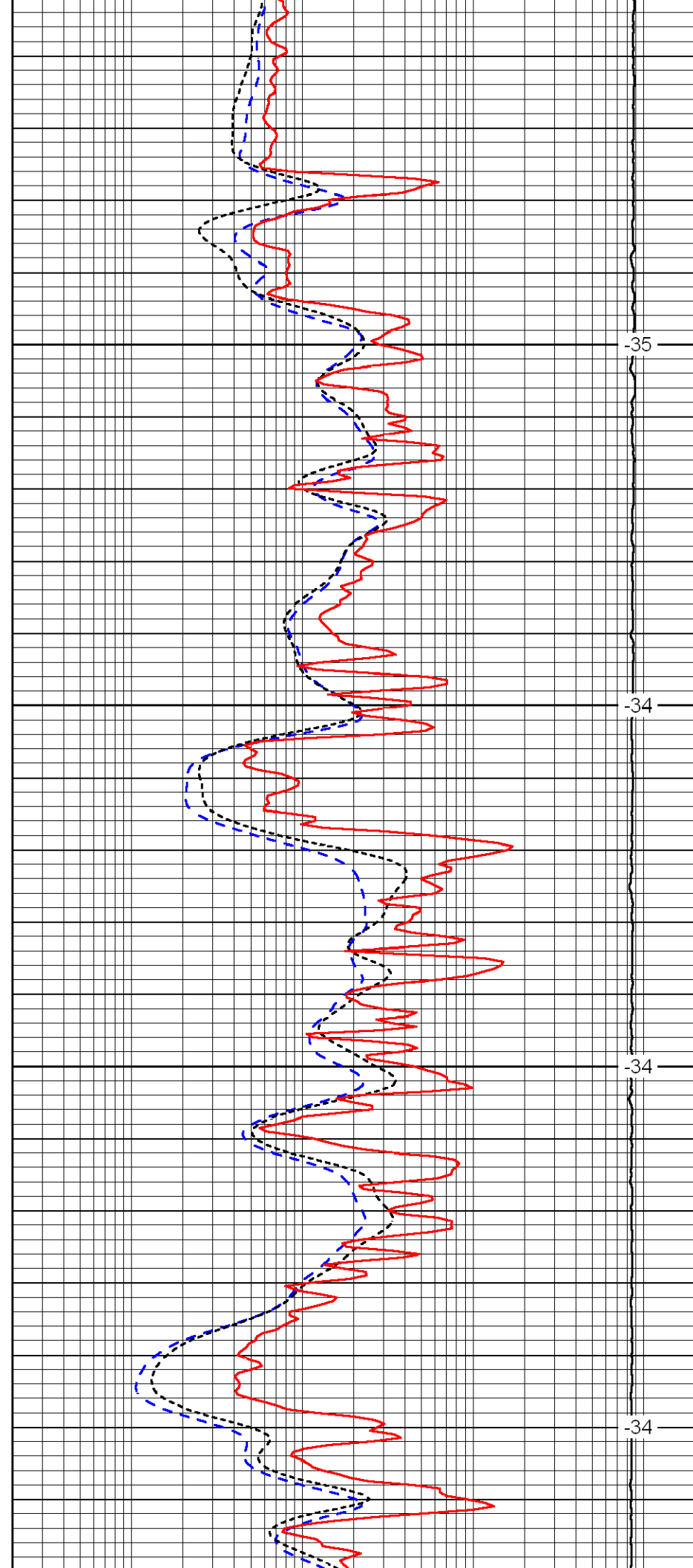


4300

4350

4400

4450

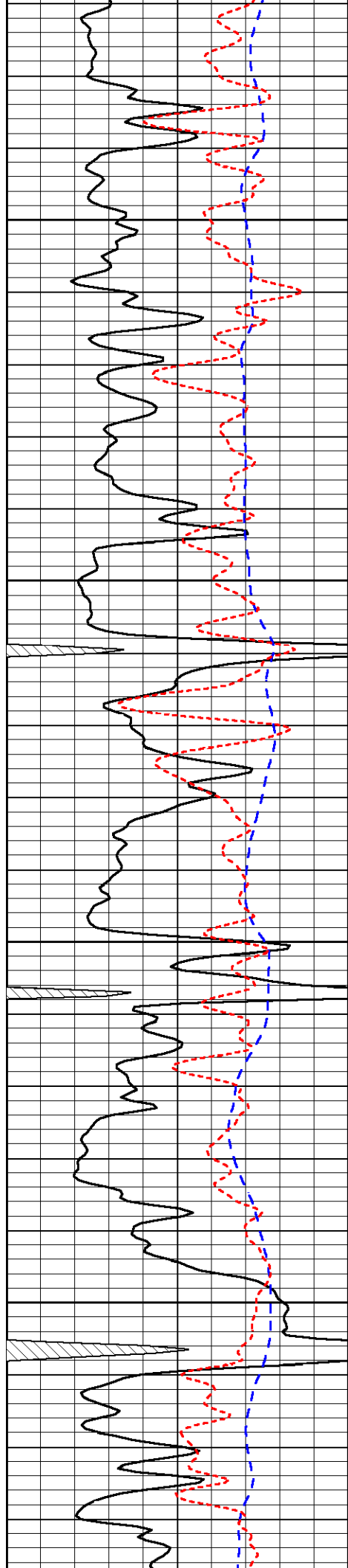


-35

-34

-34

-34

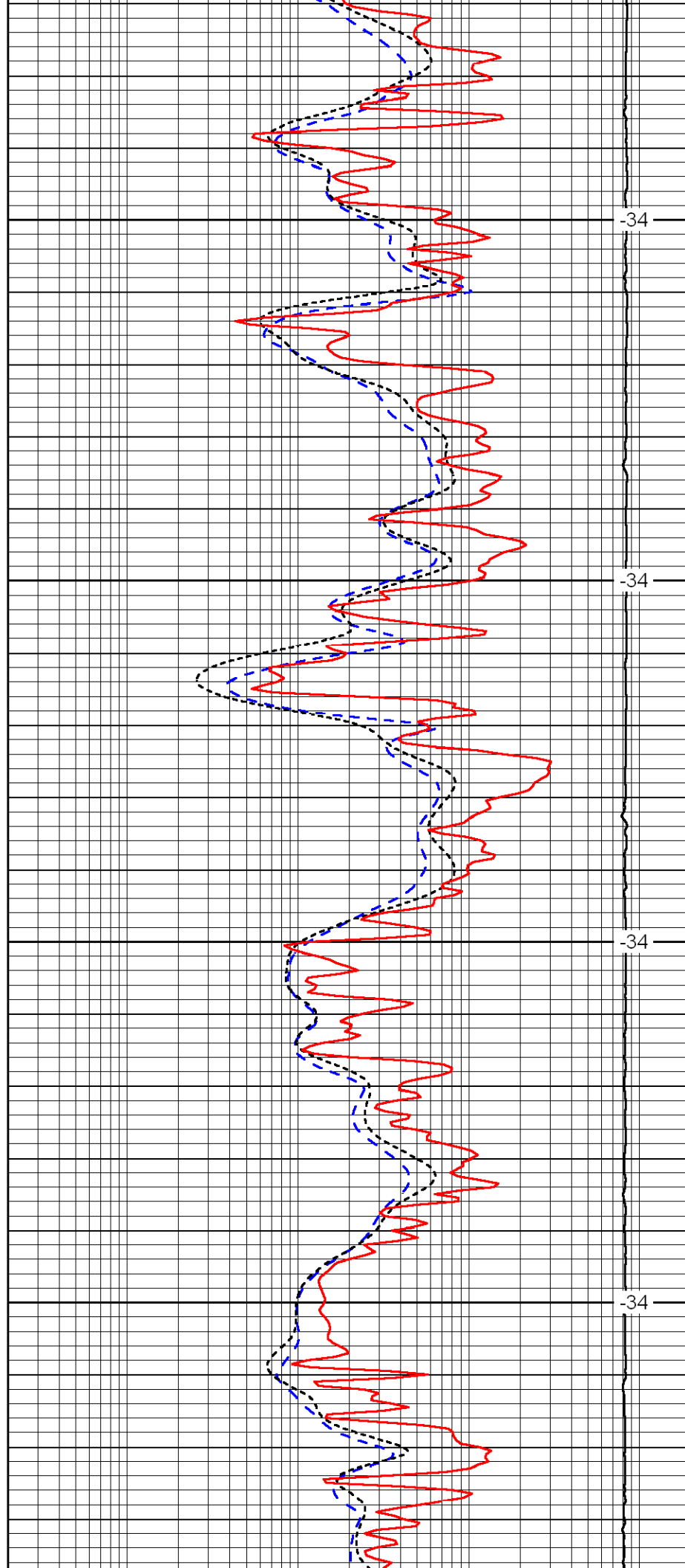


4500

4550

4600

4650

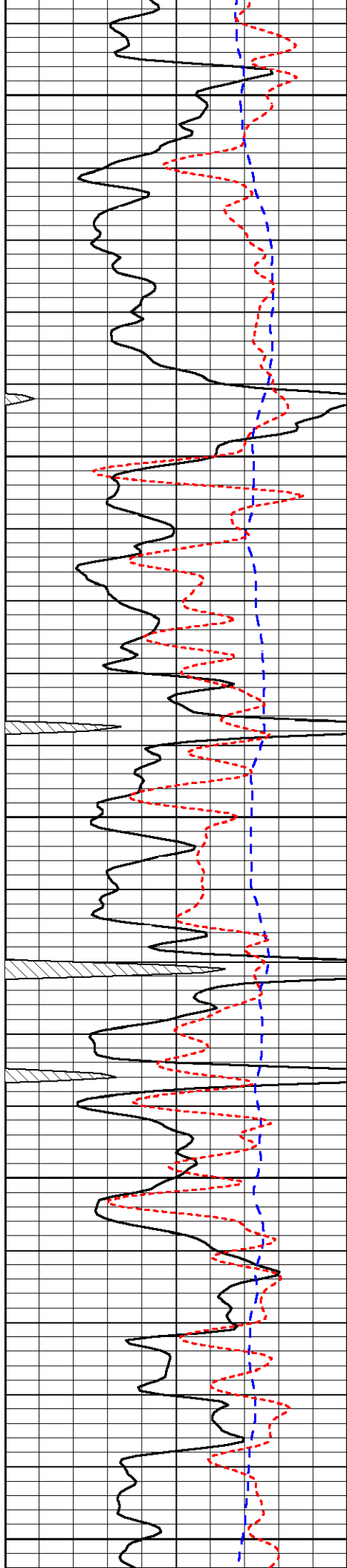


-34

-34

-34

-34



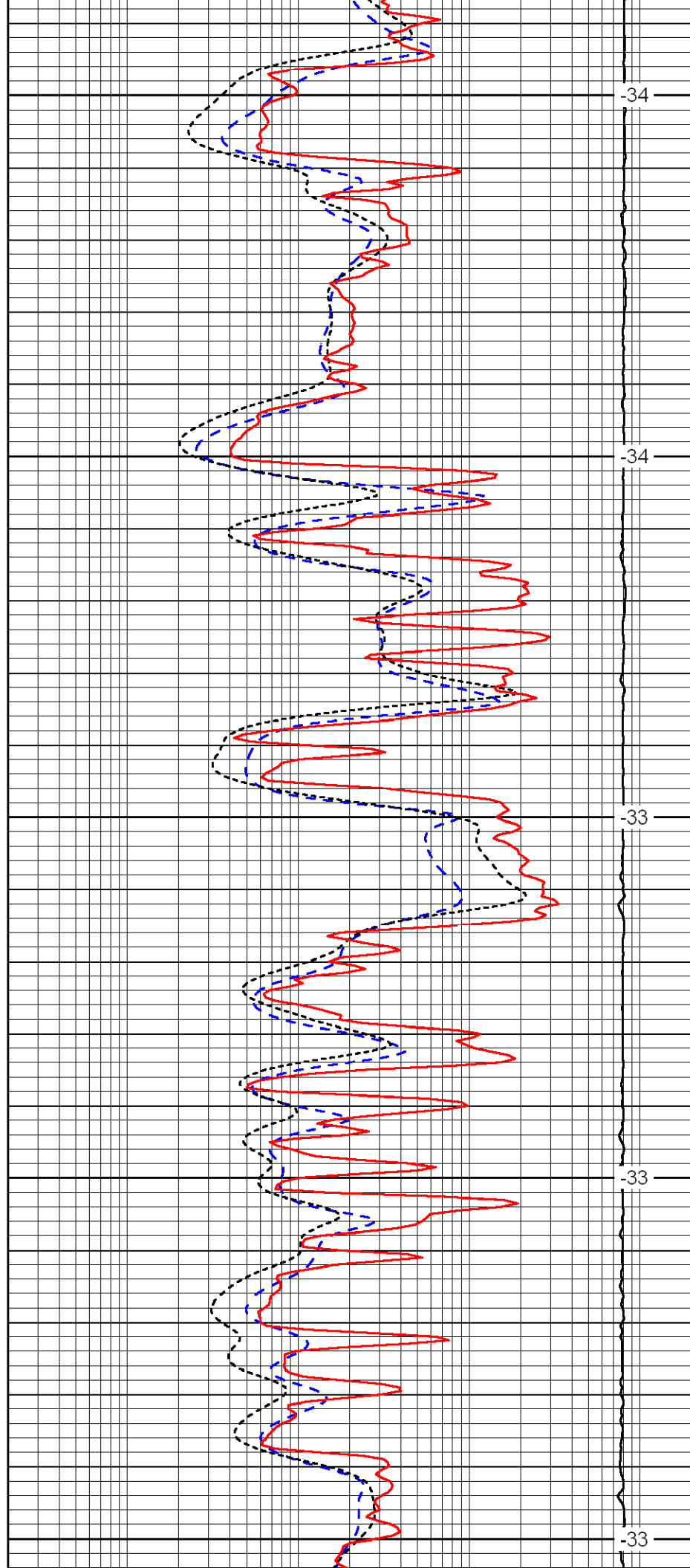
4700

4750

4800

4850

4900



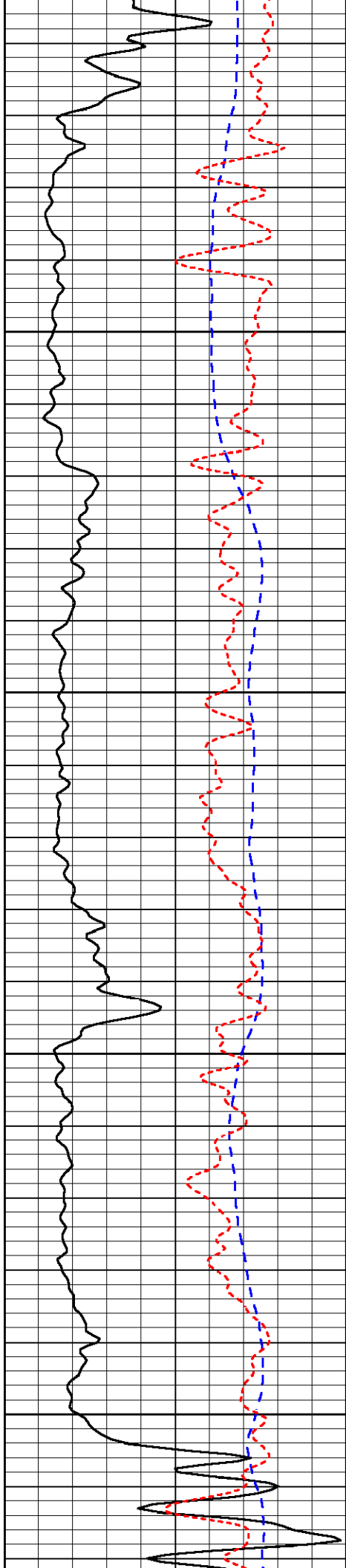
-34

-34

-33

-33

-33

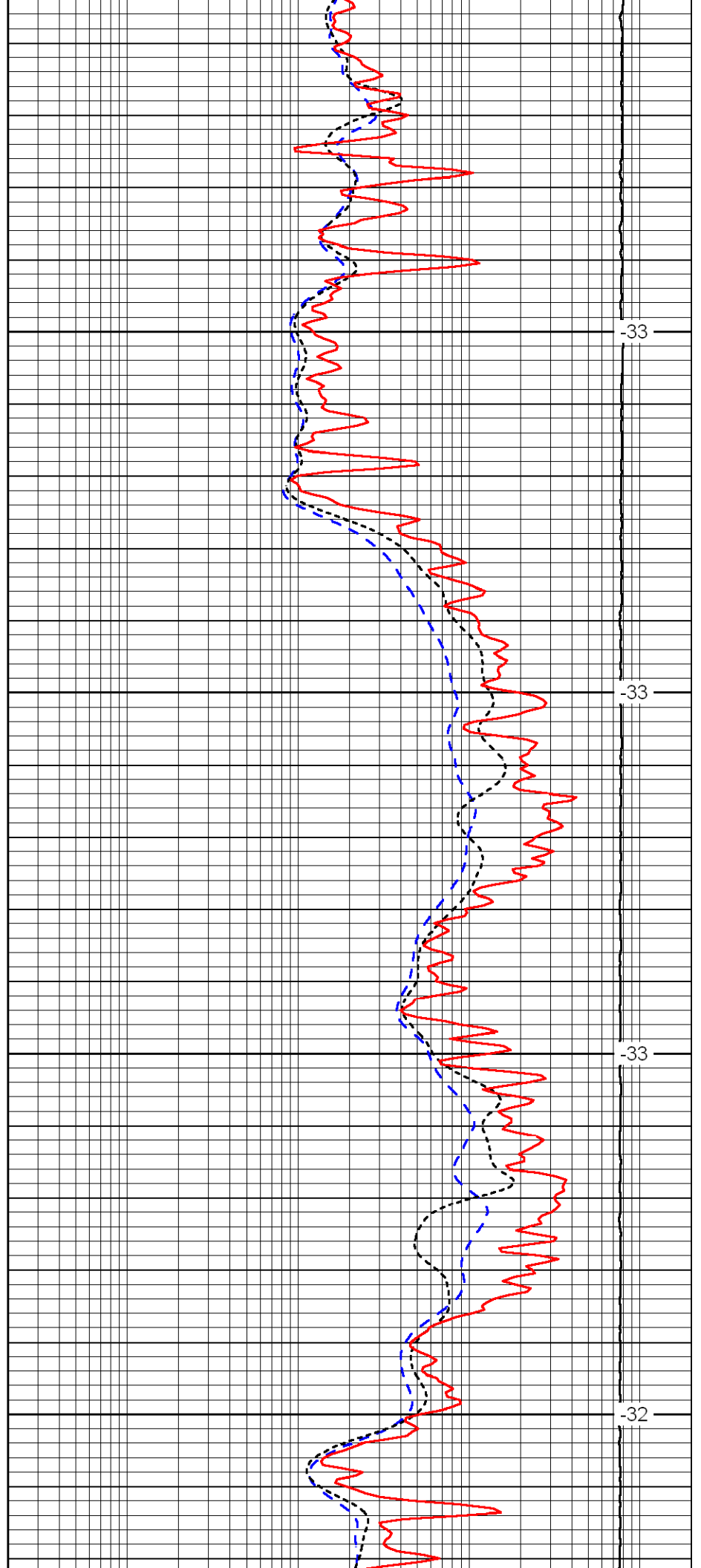


4950

5000

5050

5100

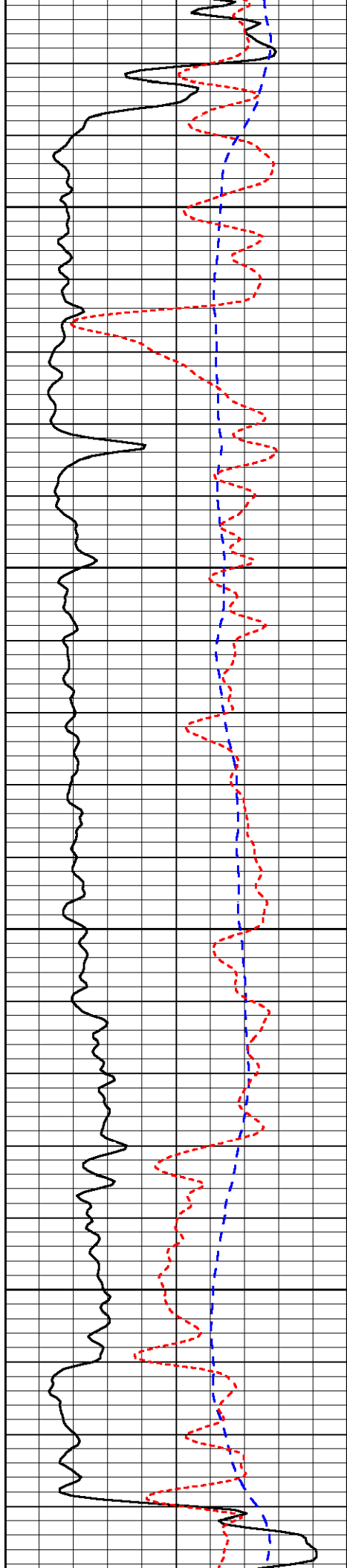


-33

-33

-33

-32

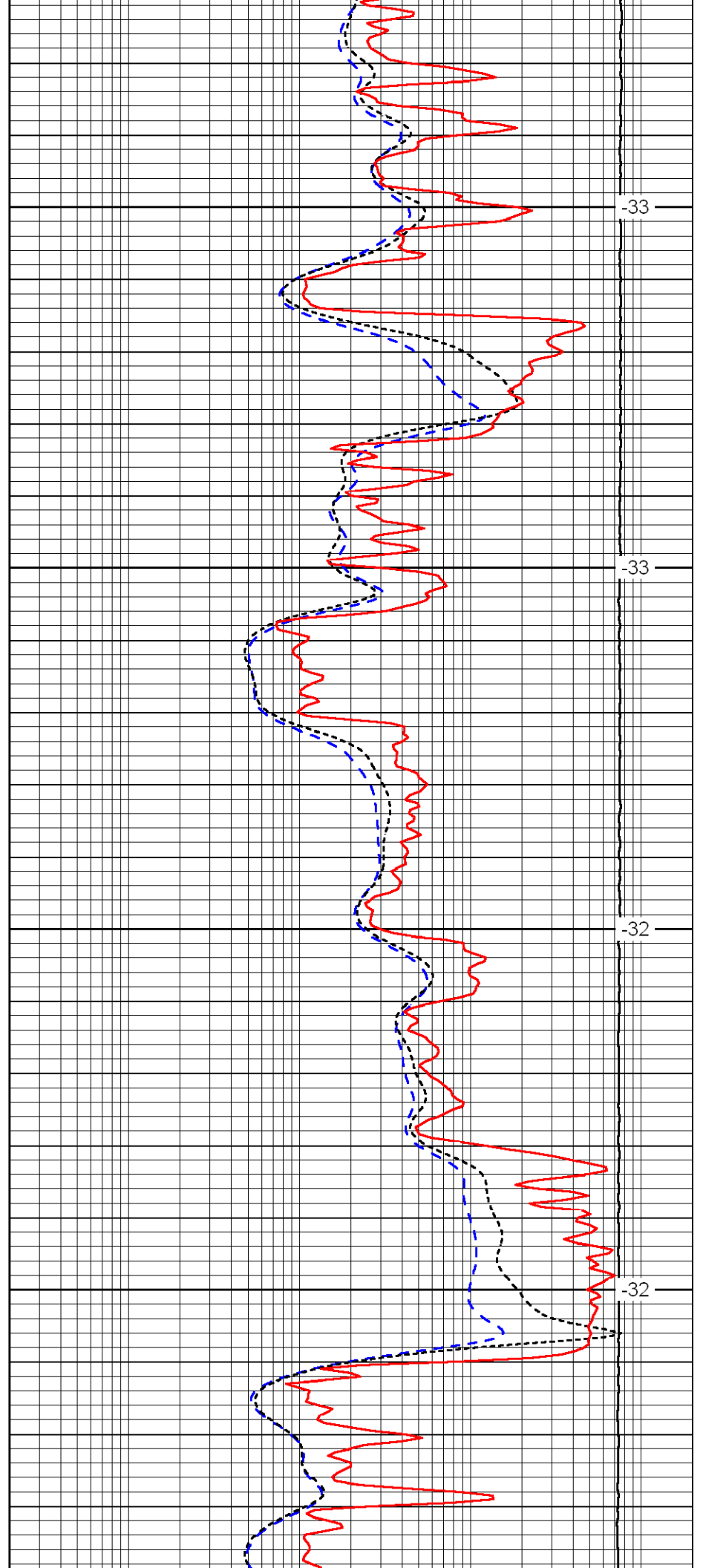


5150

5200

5250

5300

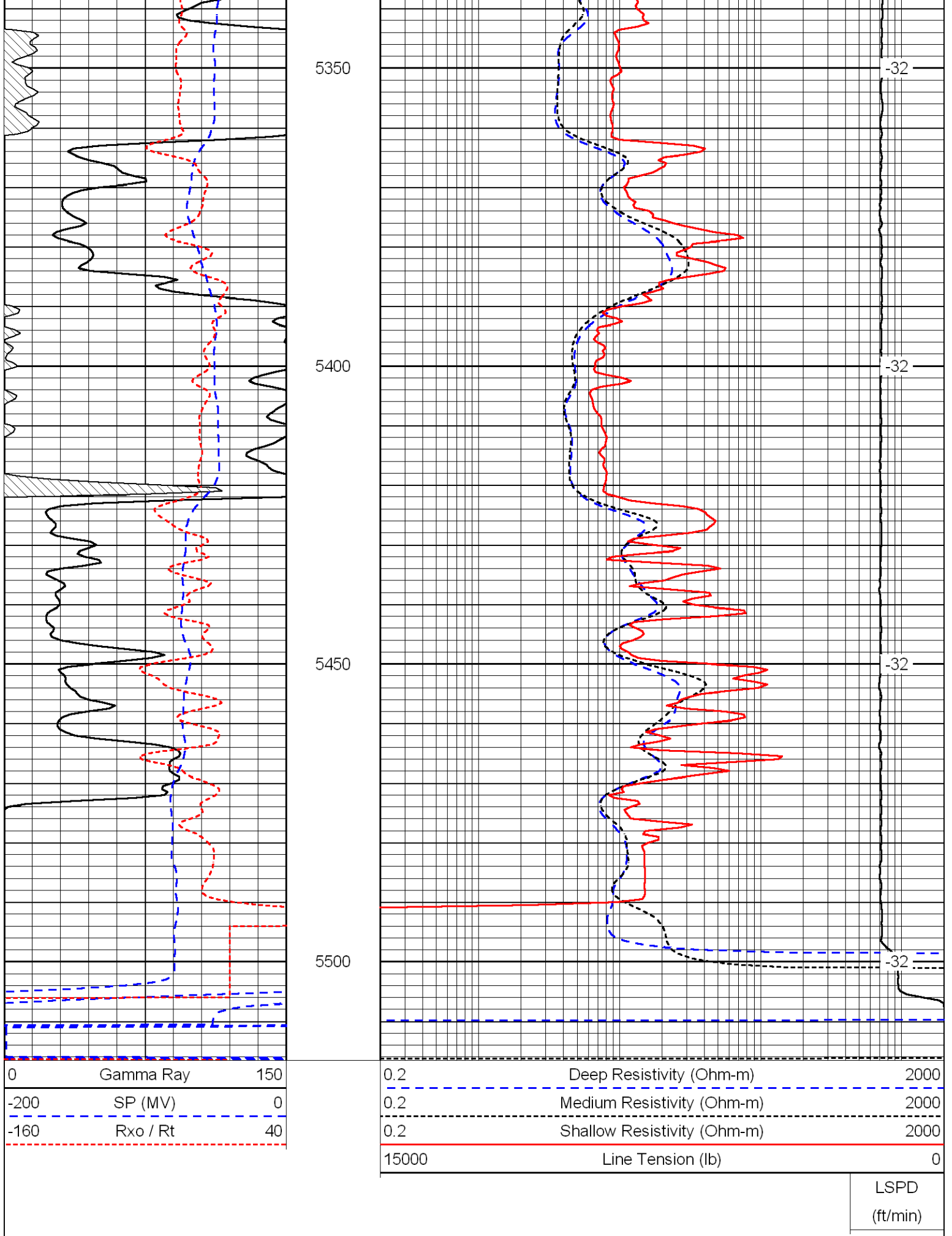


-33

-33

-32

-32



LSPD  
(ft/min)