



# Radiation Guard Log

**DIGITAL LOG** (785) 625-3858

API No. 15-137-20,499-00-00

Company **Bach Oil Production, Inc.**

Well **Adee No. 1**

Field **Wildcat**

County **Norton** State **Kansas**

Location **1210' FSL & 1800' FWL**

Sec: **14** Twp: **4S** Rge: **21W**

Permament Datum **Ground Level** Elevation **2212**

Log Measured From **Kelly Bushing** 5 Ft. Above Perm. Datum

Drilling Measured From **Frokkelly Bushing**

Other Services  
Elevation  
MEL  
K.B. 2217  
D.F.  
G.L. 2212

Date 11/25/2008

Run Number One

Depth Driller 3724

Depth Logger 3722

Bottom Logged Interval 3721

Top Log Interval 200

Casing Driller 8.625 @ 215

Casing Logger 208

Bit Size 7.875

Type Fluid in Hole Chemical

Salinity.ppm CL 1.800

Density / Viscosity 9.2 50

pH / Fluid Loss 10.0 8.0

Source of Sample Flowline

Rm @ Meas. Temp 2.2 @ 65

Rmf @ Meas. Temp 1.65 @ 65

Rmc @ Meas. Temp 2.97 @ 65

Source of Rmf / Rmc Charts

Rm @ BHT 1.24 @ 115

Operating Rig Time 3 Hours

Max Rec. Temp. F 124

Equipment Number 10

Location Hays

Recorded By Jason Wellbrock

Witnessed By Bob Peterson

<<< Fold Here >>>

All interpretations are opinions based on inferences from electrical or other measurements and we cannot and do not guarantee the accuracy or correctness of any interpretation, and we shall not, except in the case of gross or willful negligence on our part, be liable or responsible for any loss, costs, damages, or expenses incurred or sustained by anyone resulting from any interpretation made by any of our officers, agents or employees. These interpretations are also subject to our general terms and conditions set out in our current Price Schedule.

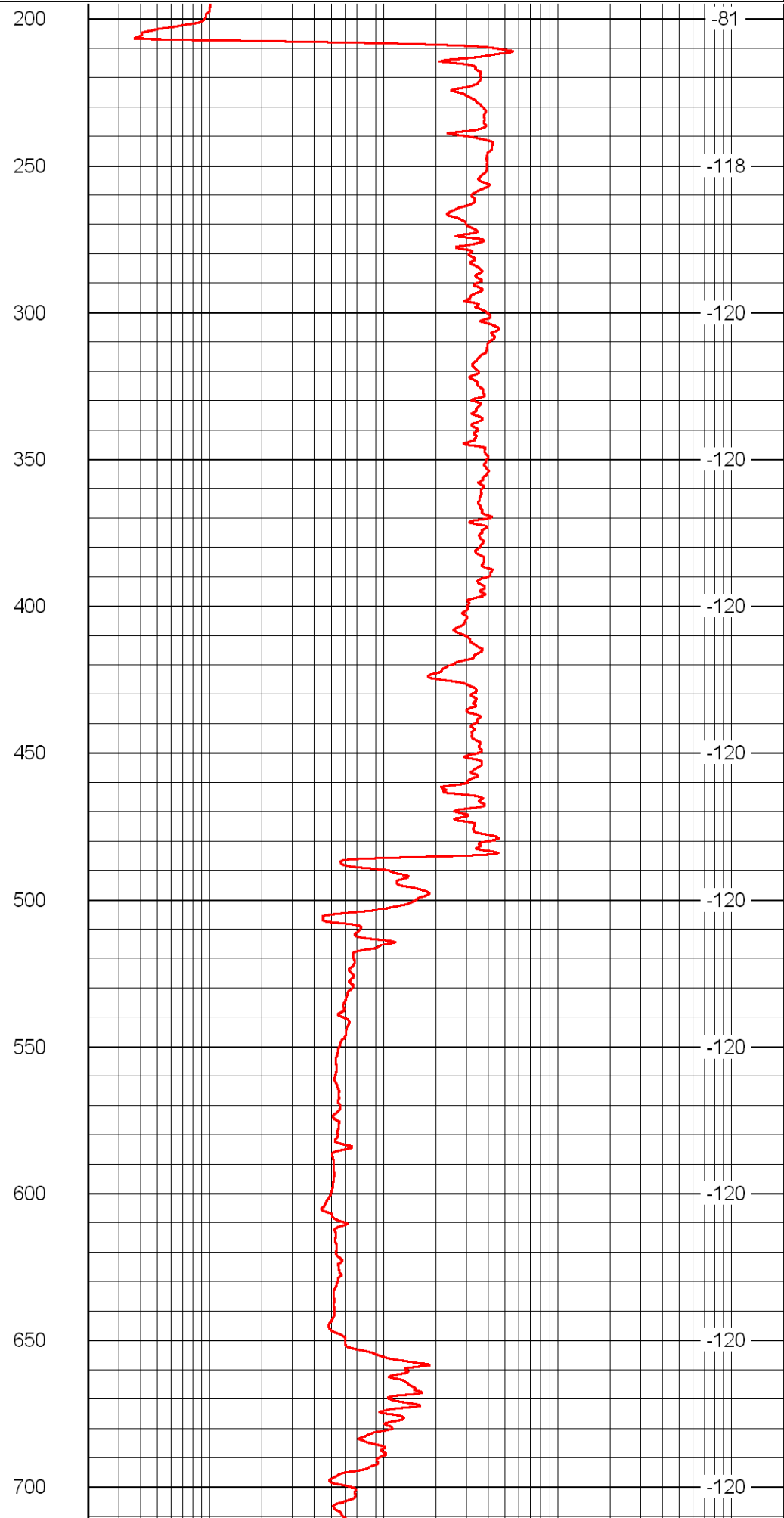
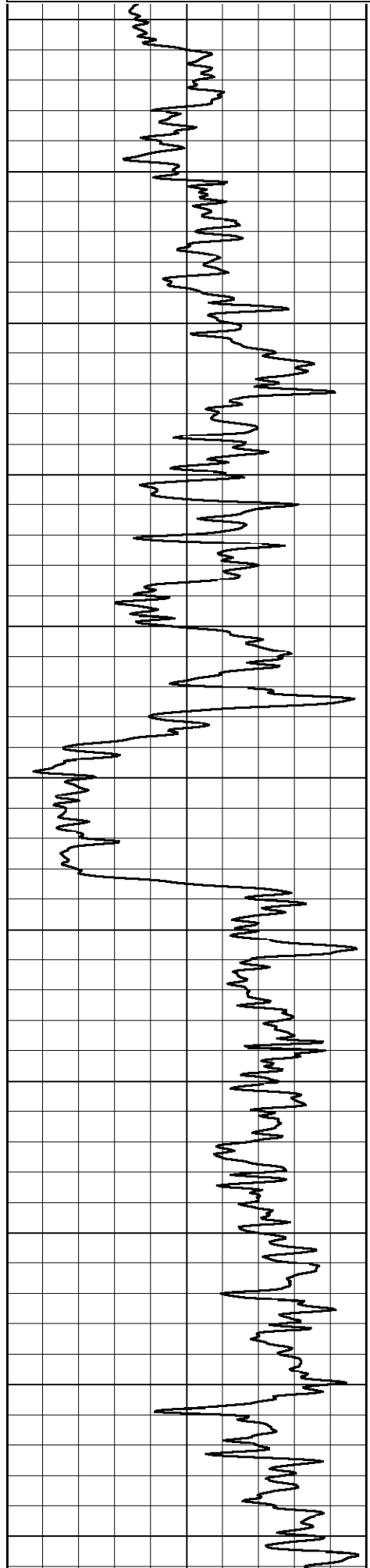
### Comments

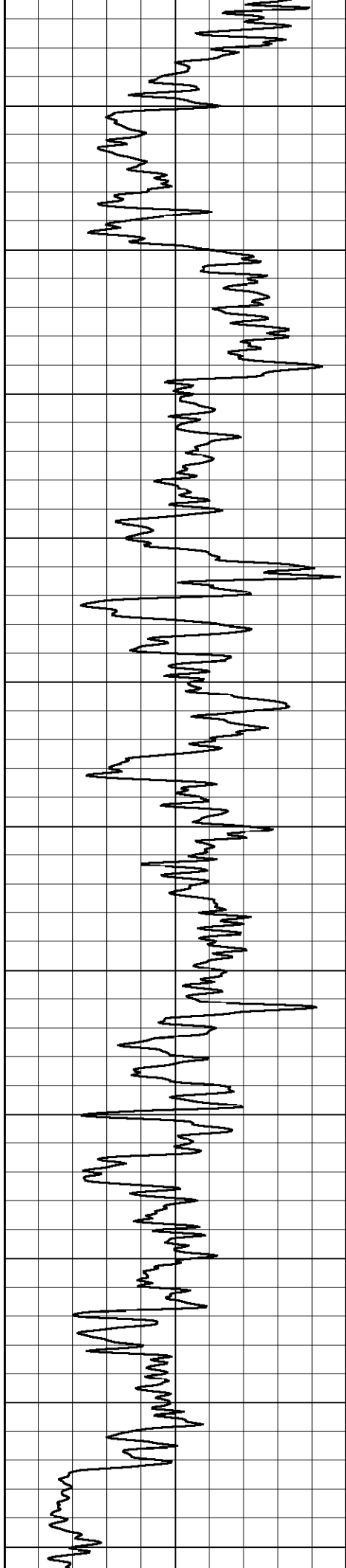
Thank you for using Log-Tech, Inc.  
(785) 625-3858

Logan W 4, N 3, E Into

Database File: c:\warrior\data\bach\_adee\_#1\bachhd.db  
 Dataset Pathname: rag/bach2in  
 Presentation Format: rag2in  
 Dataset Creation: Tue Nov 25 07:48:37 2008  
 Charted by: Depth in Feet scaled 1:600

LSPD





750

800

850

900

950

1000

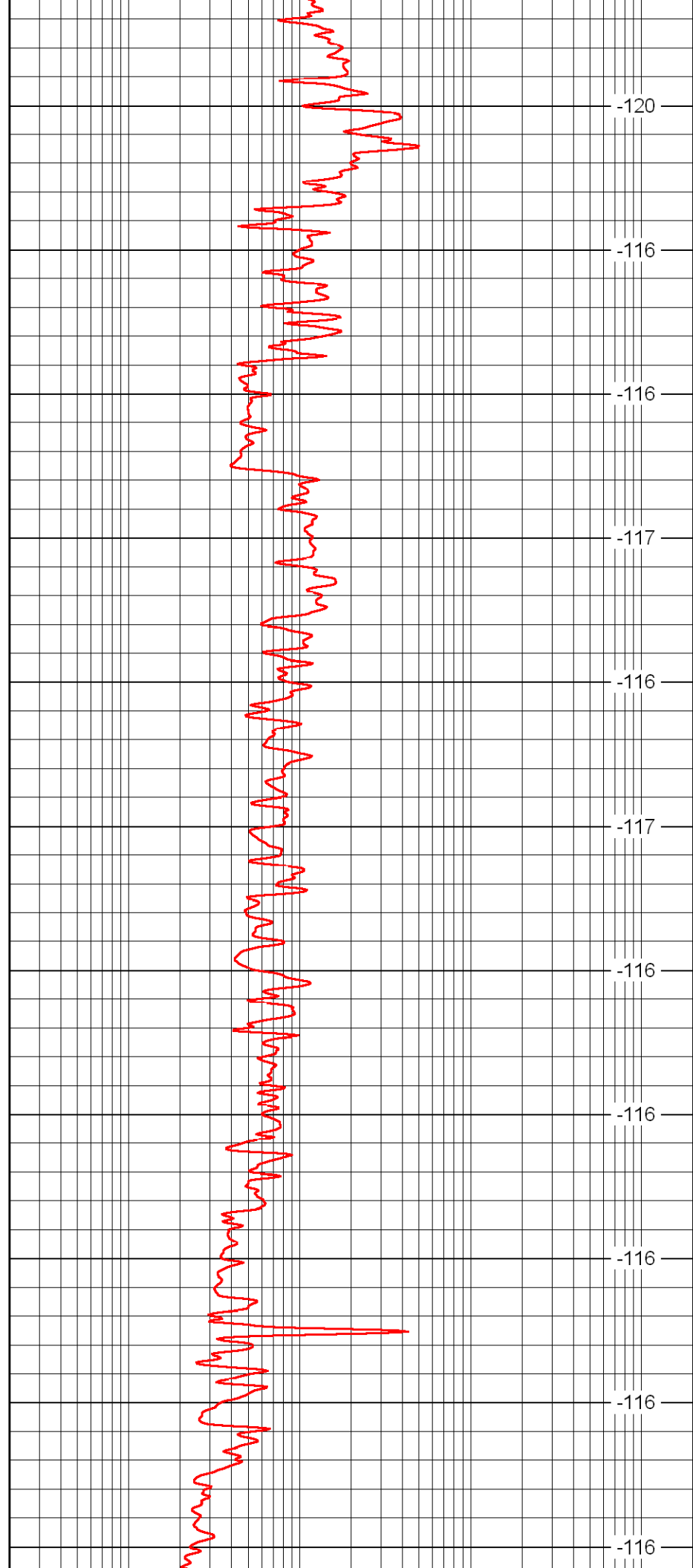
1050

1100

1150

1200

1250



-120

-116

-116

-117

-116

-117

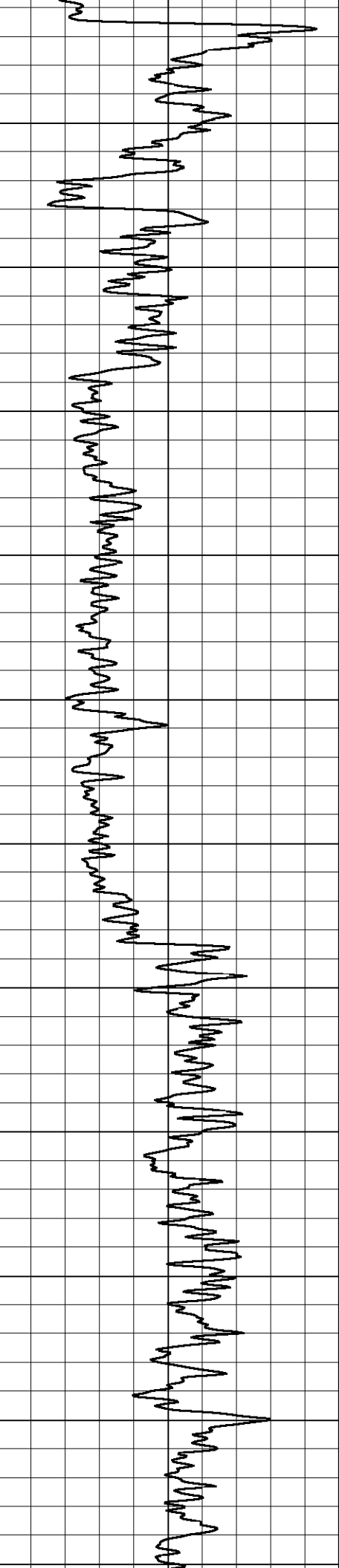
-116

-116

-116

-116

-116



1300

1350

1400

1450

1500

1550

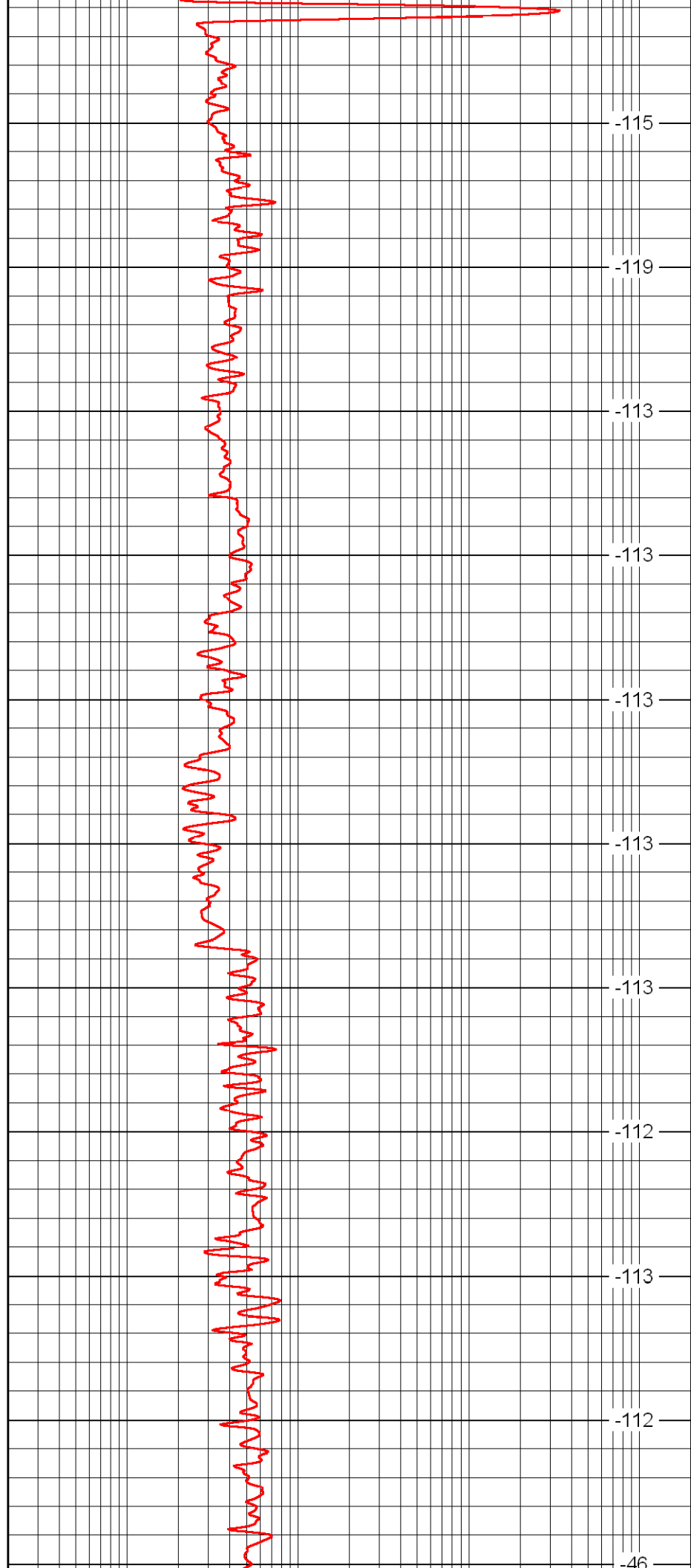
1600

1650

1700

1750

1800



-115

-119

-113

-113

-113

-113

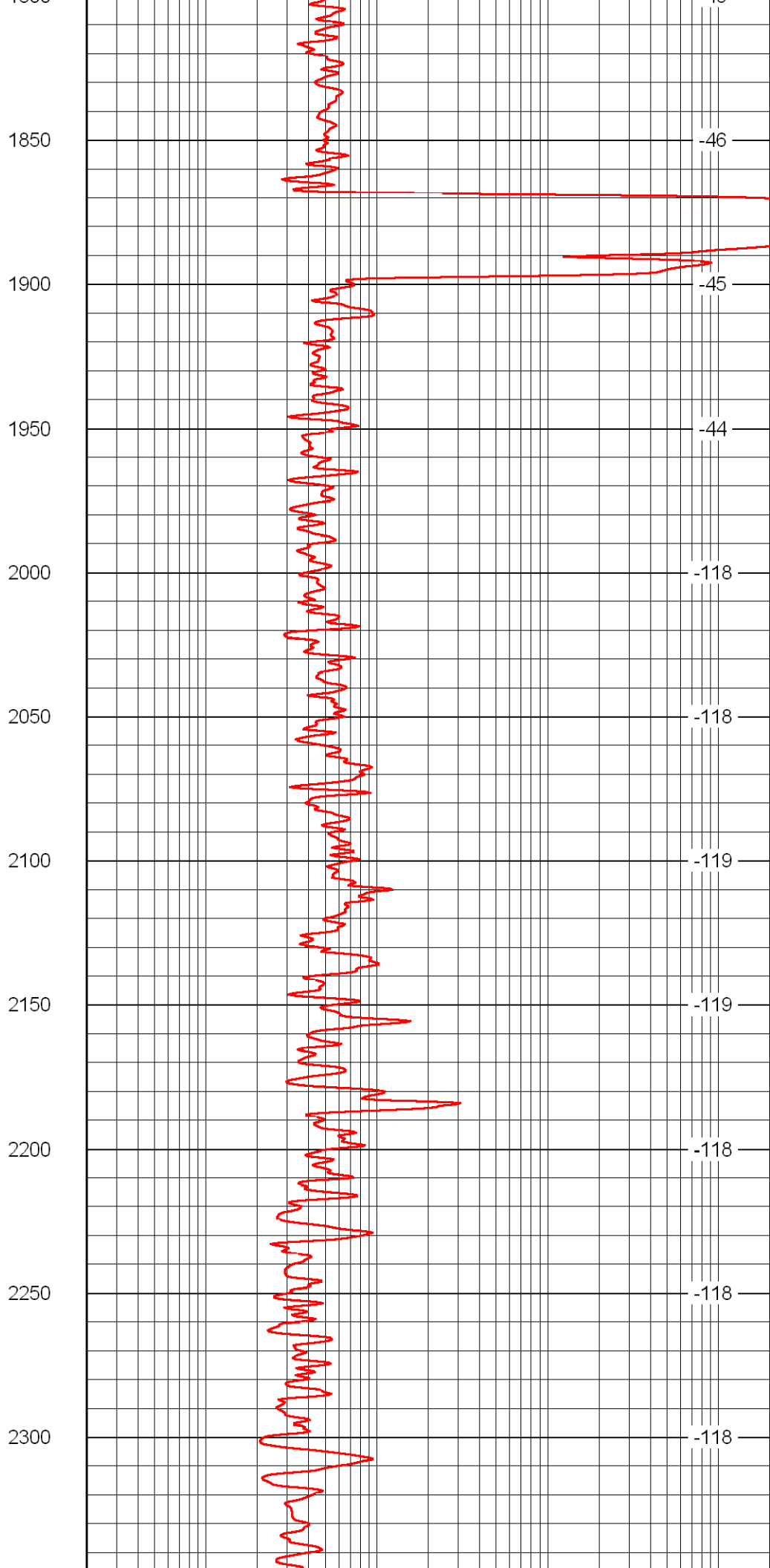
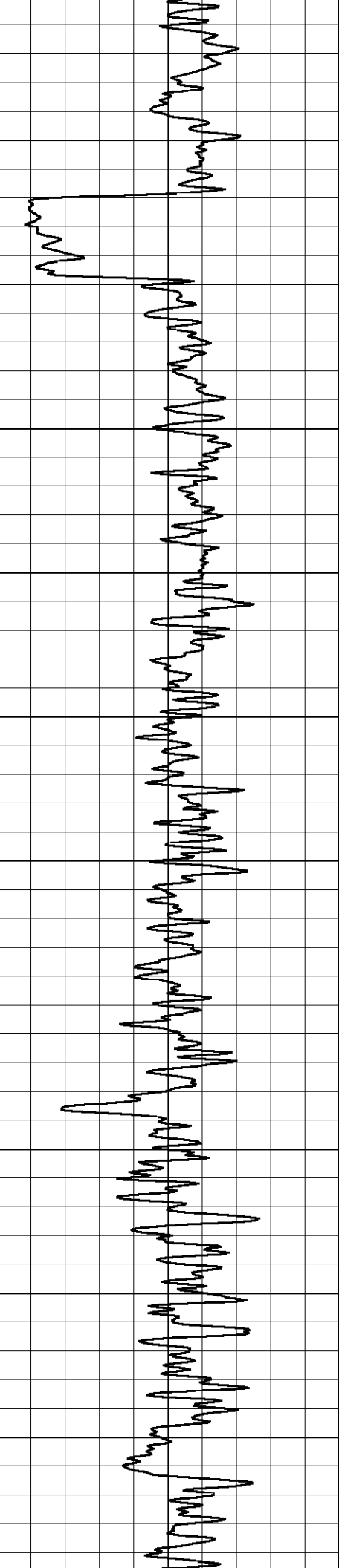
-113

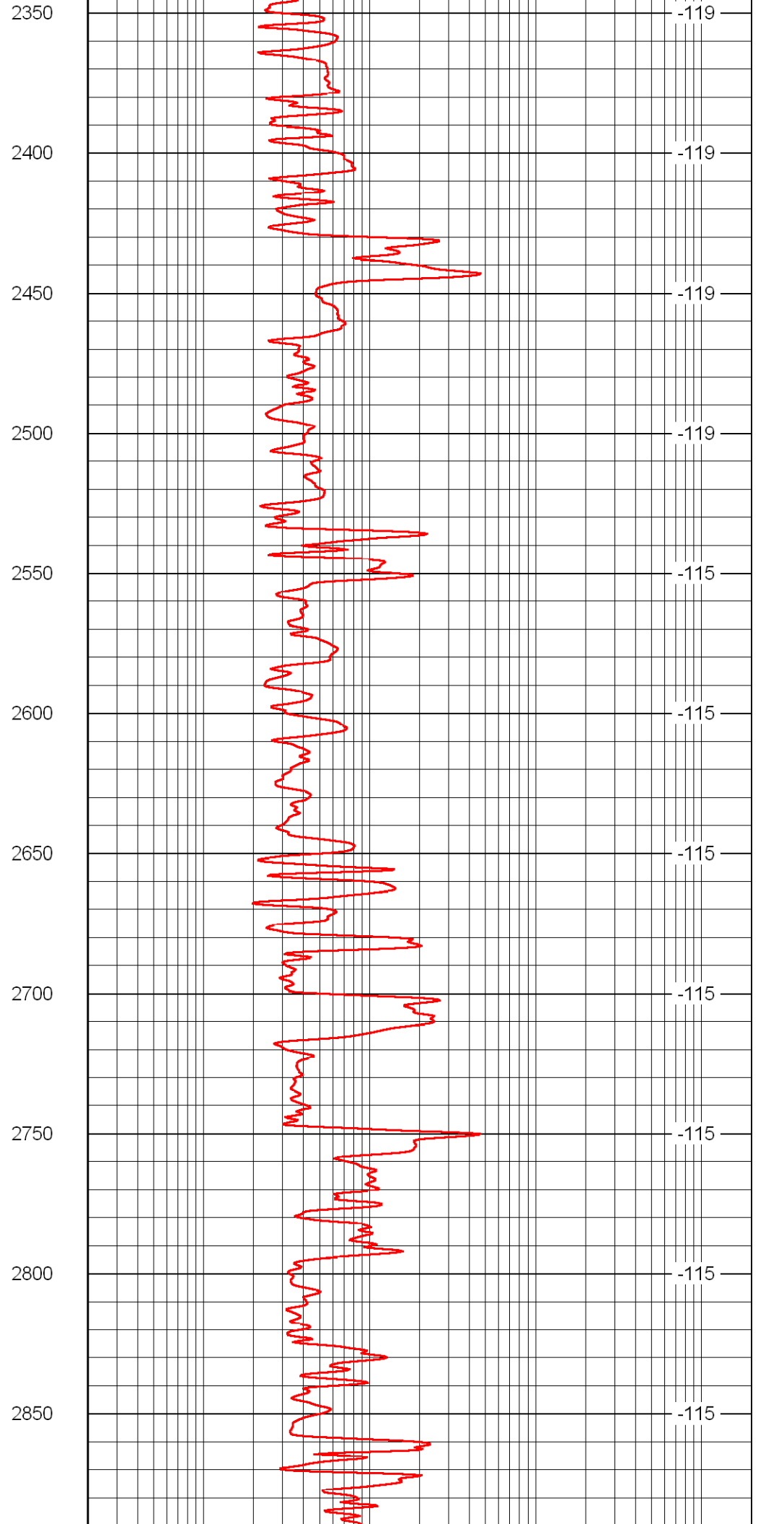
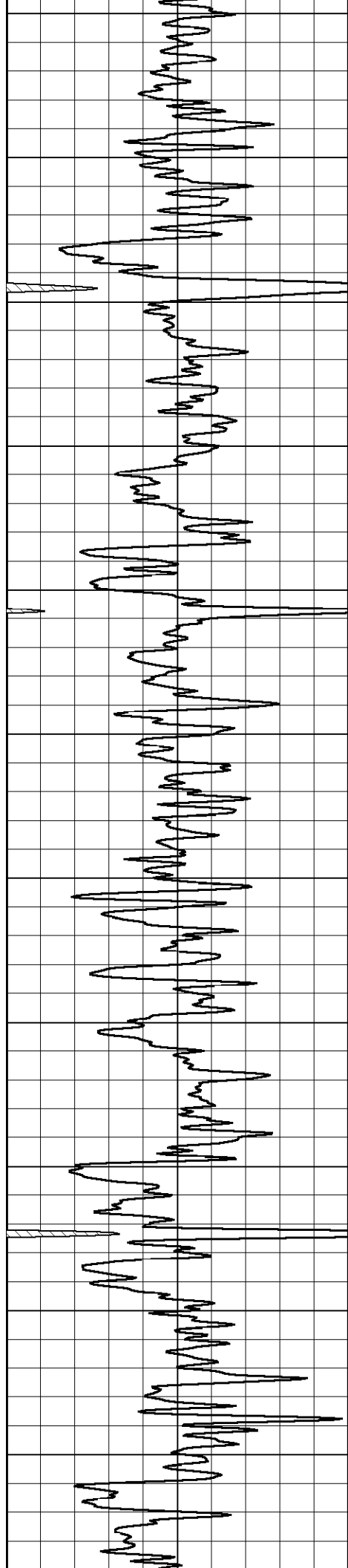
-112

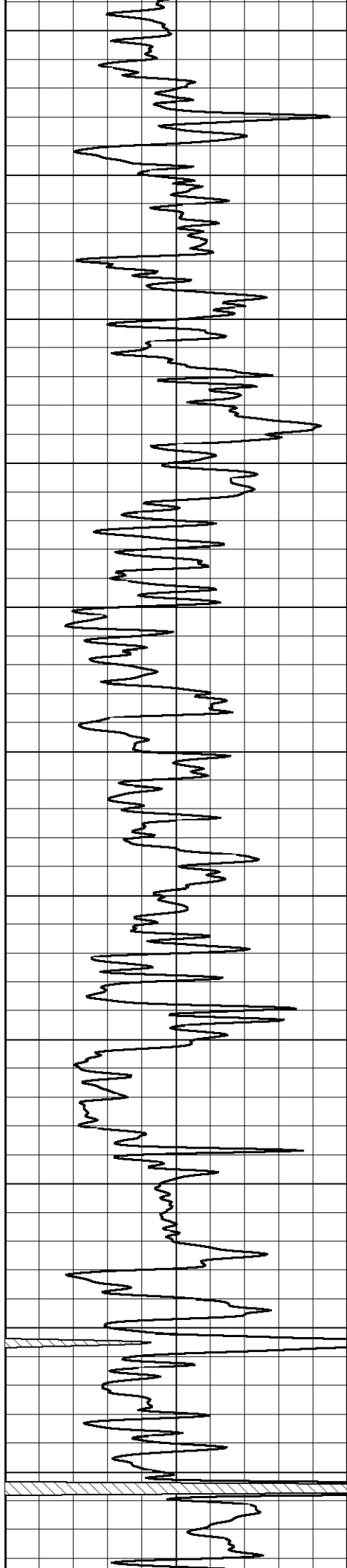
-113

-112

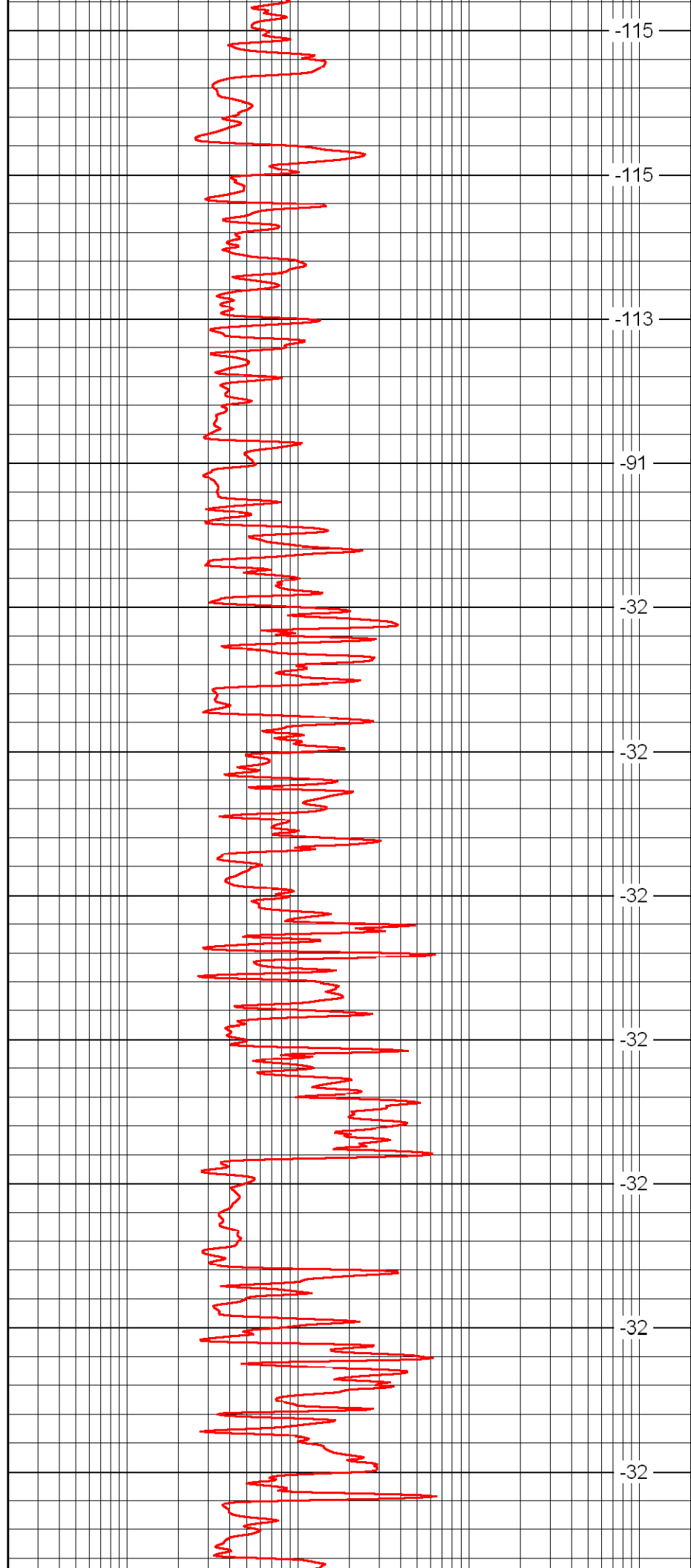
-46



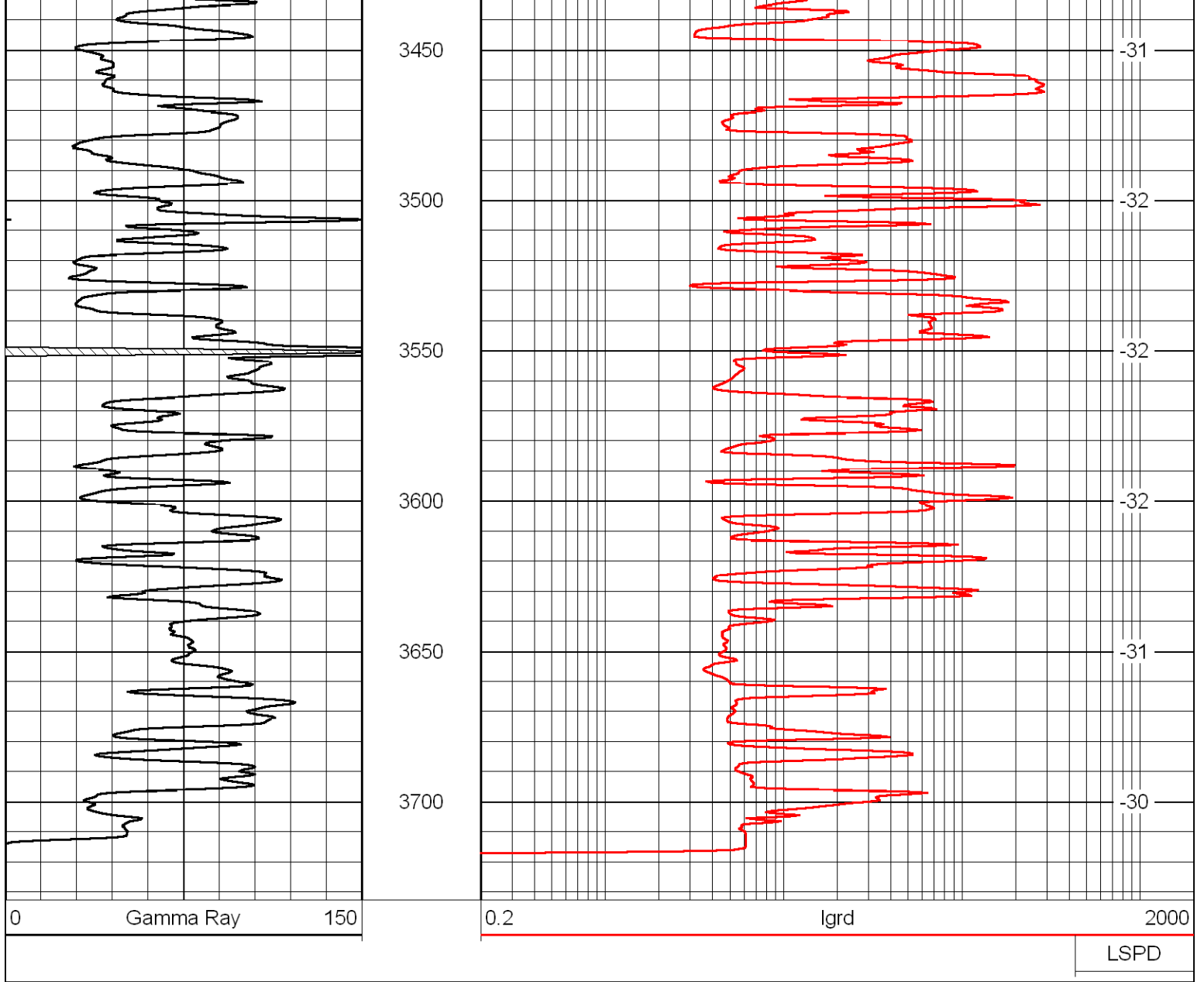




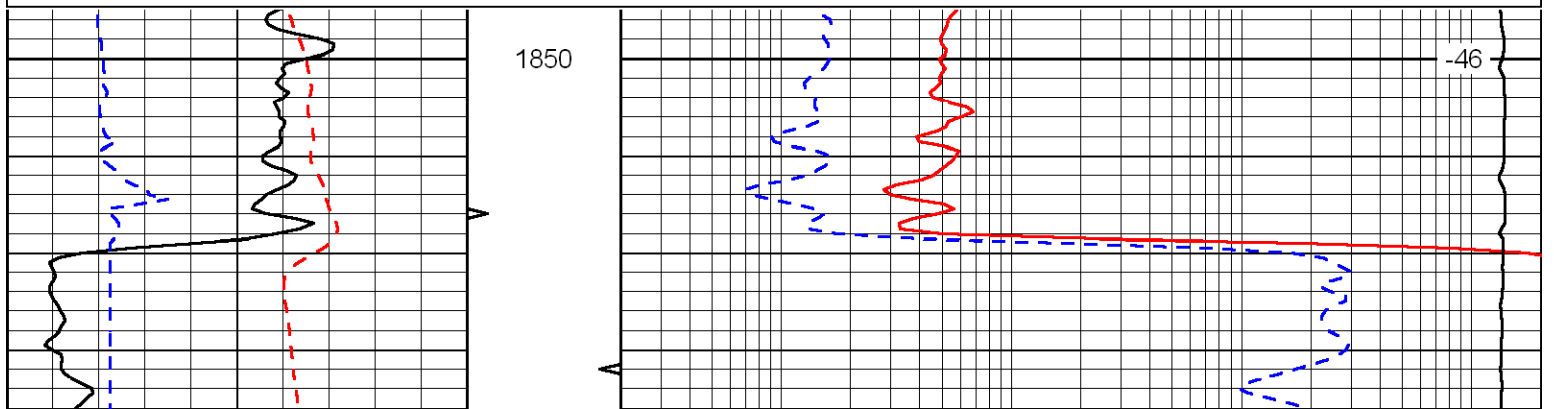
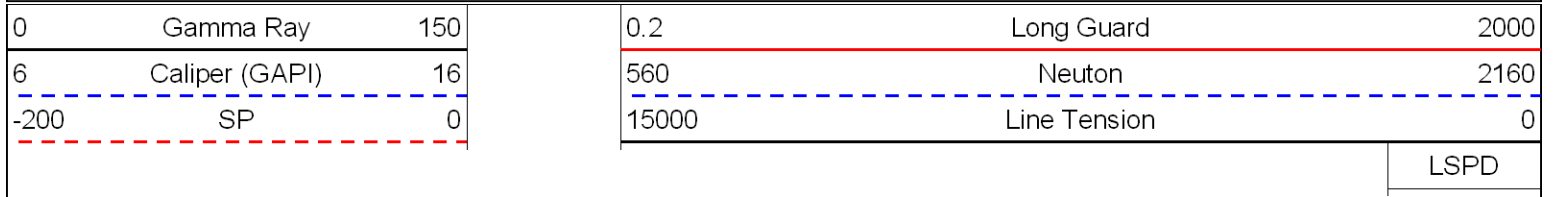
2900  
2950  
3000  
3050  
3100  
3150  
3200  
3250  
3300  
3350  
3400

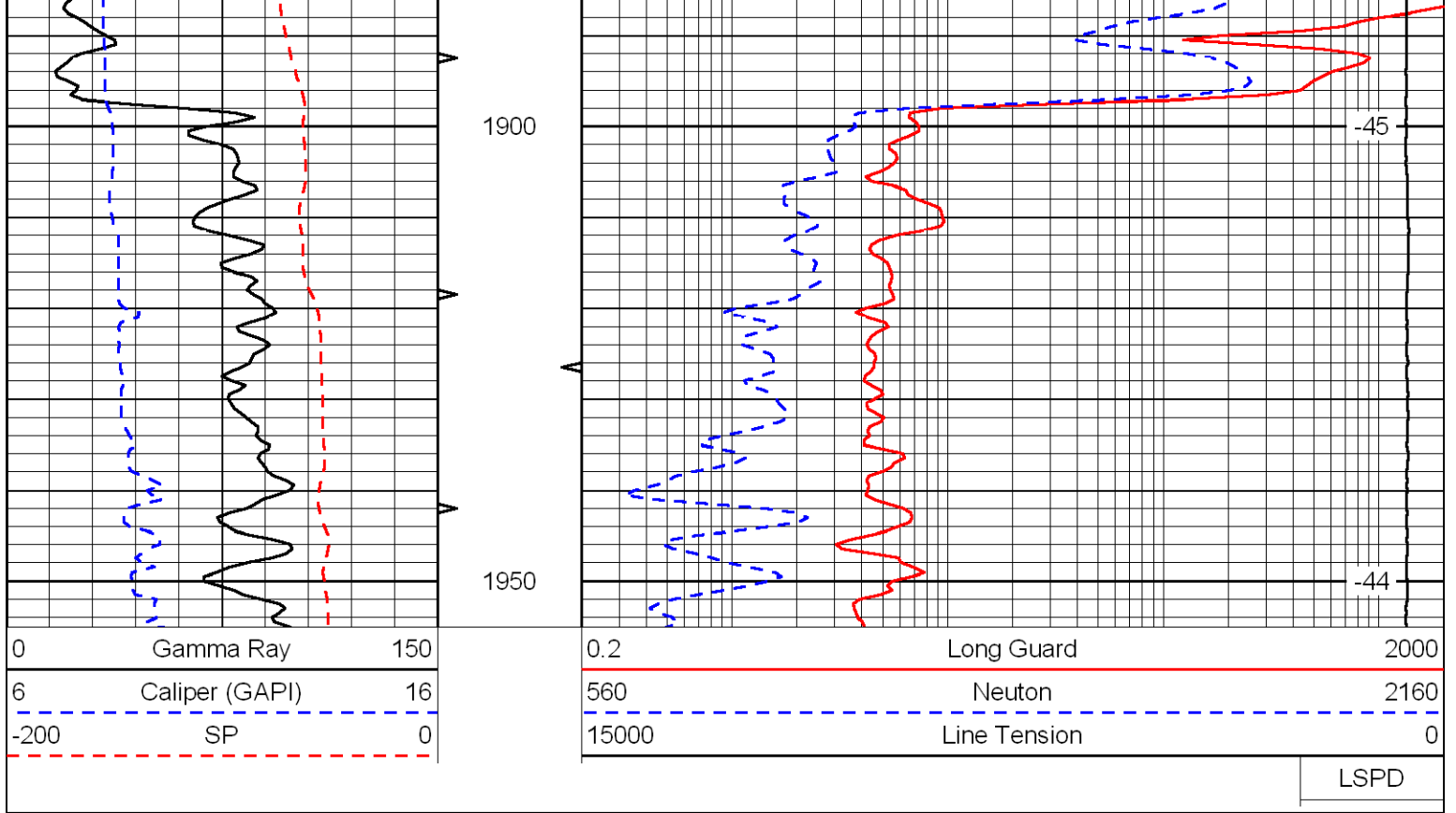


-115  
-115  
-113  
-91  
-32  
-32  
-32  
-32  
-32  
-32  
-32  
-32  
-32

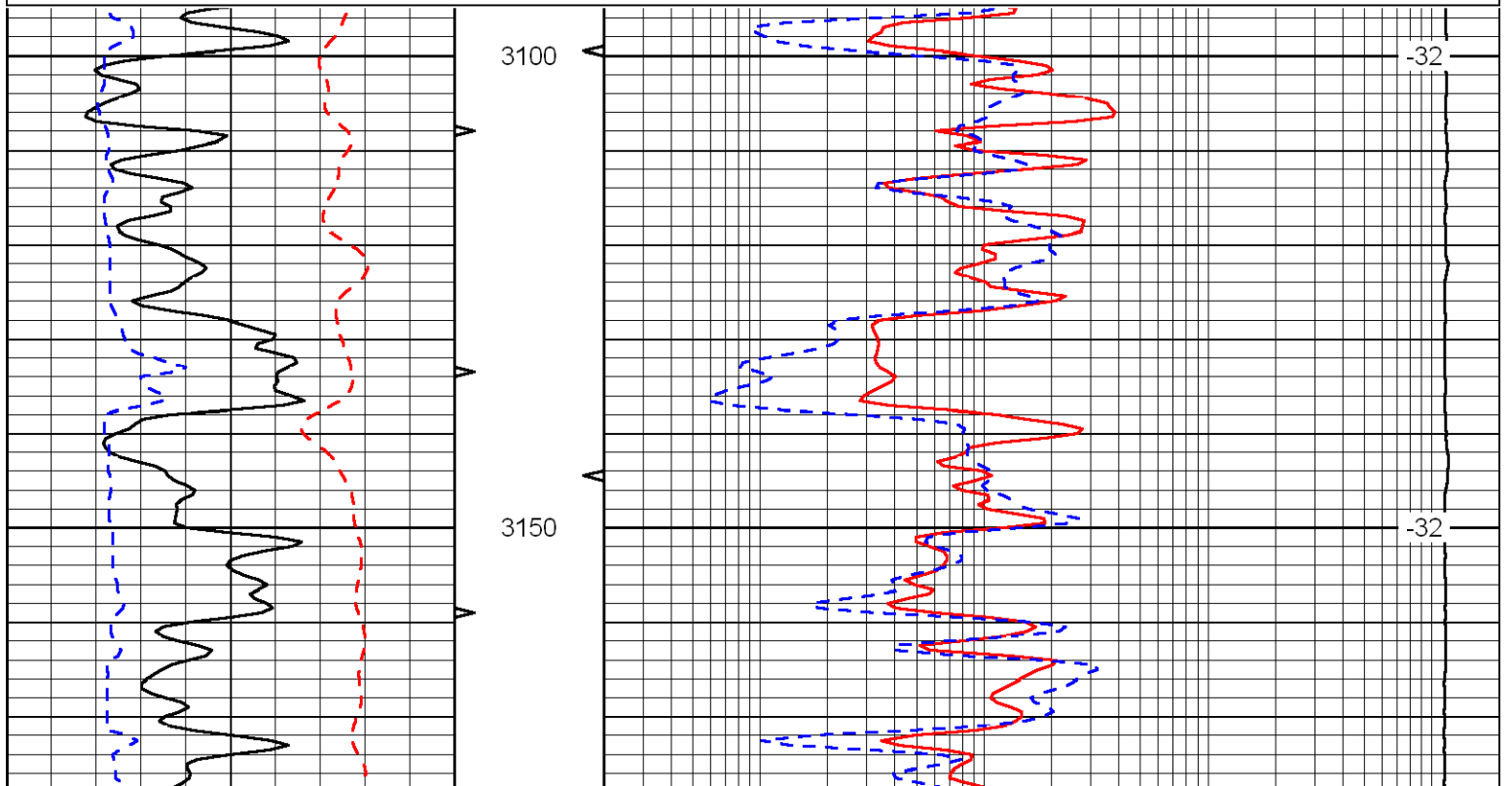
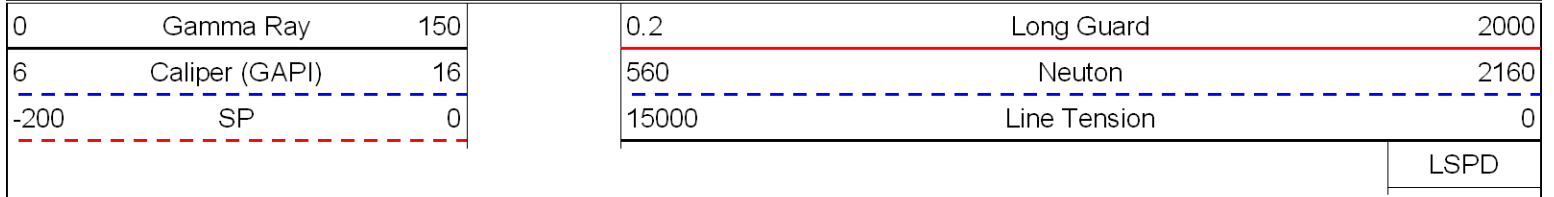


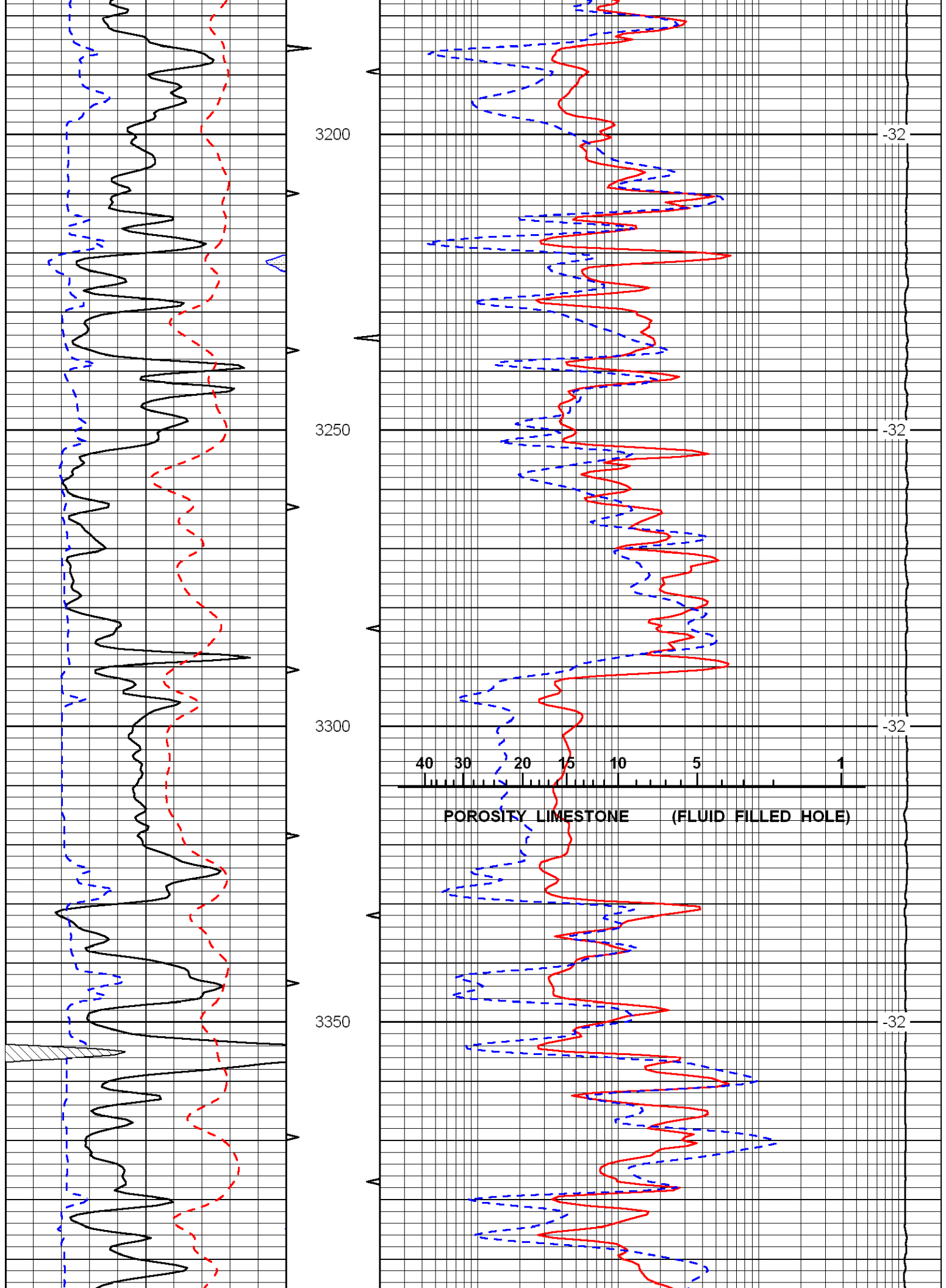
Database File: c:\warrior\data\bach\_adee\_#1\bachhd.db  
 Dataset Pathname: rag/bach2in  
 Presentation Format: rag  
 Dataset Creation: Tue Nov 25 07:48:37 2008  
 Charted by: Depth in Feet scaled 1:240

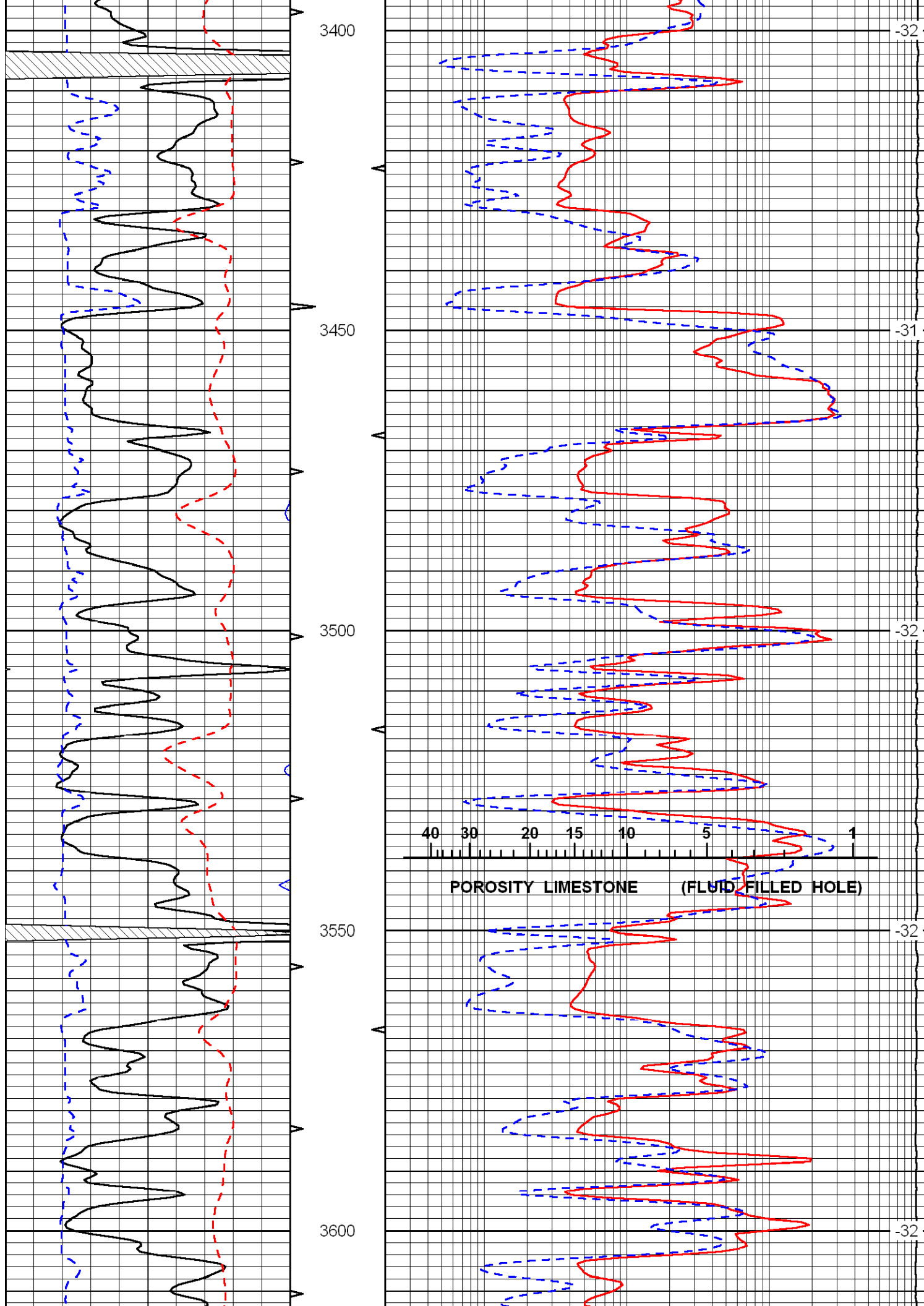


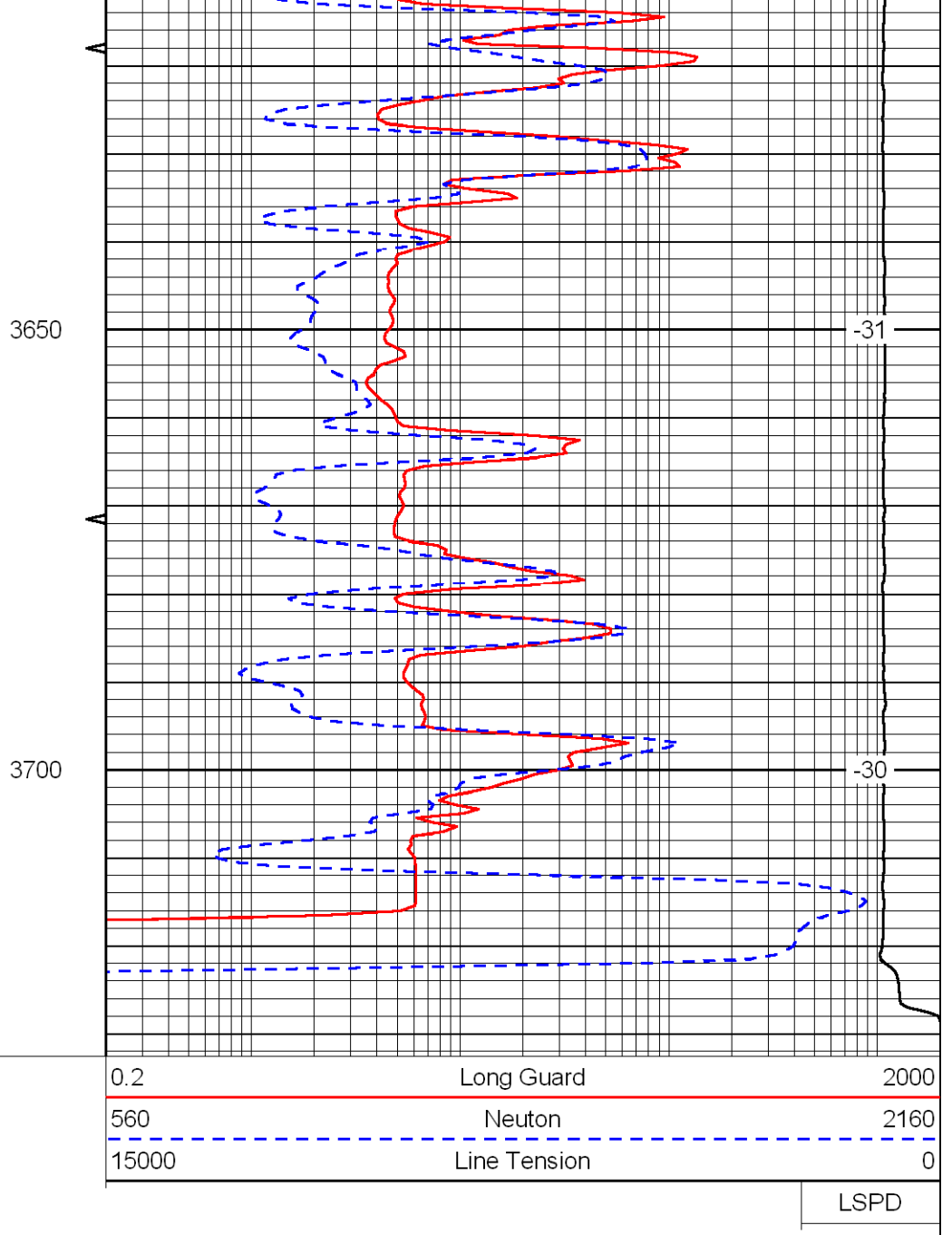
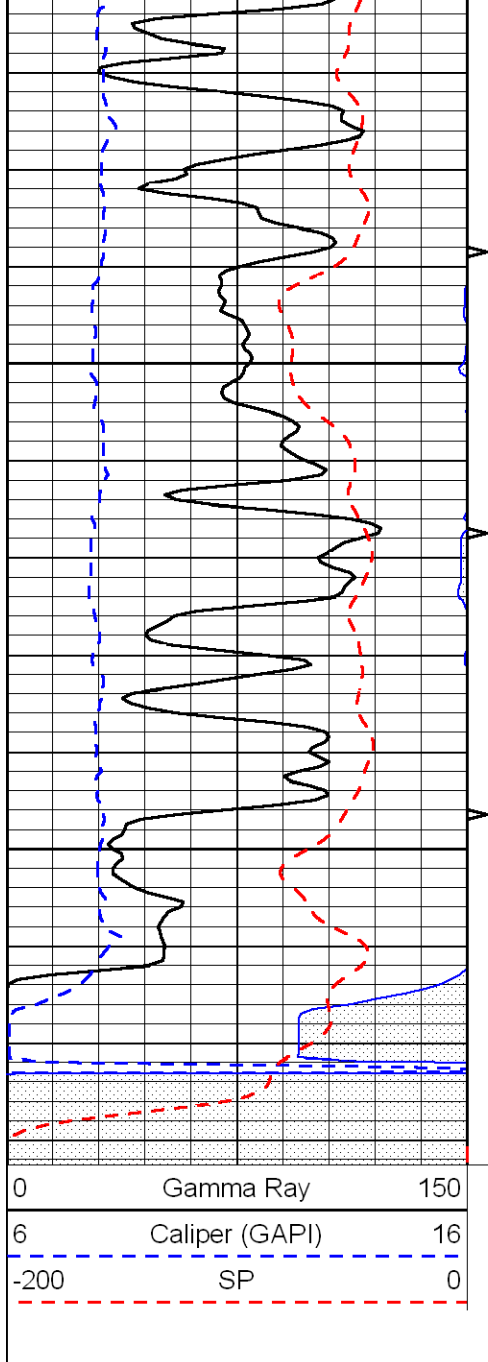


Database File: c:\warrior\data\bach\_adee\_#1\bachhd.db  
 Dataset Pathname: rag/bach2in  
 Presentation Format: rag  
 Dataset Creation: Tue Nov 25 07:48:37 2008  
 Charted by: Depth in Feet scaled 1:240









LSPD