



Dual Induction Log

DIGITAL LOG (785) 625-3858

API No.	15-035-24,342-00-00	
Company	AAS Oil Company	
Well	Marrs No. 2	
Field	Gibson Pool	
County	Cowley	State
		Kansas
Location	W/2 - W/2 - SW 1470' FSL & 330' FWL	
Sec: 20	Twp: 34 S	Rge: 3 E
Permanent Datum	Ground Level	Elevation 1153
Log Measured From	Kelly Bushing	8 Ft. Above Perm. Datum
Drilling Measured From	Kelly Bushing	
		Other Services CNL/CDL
		Elevation K.B. 1161 D.F. 1153 G.L. 1153

Date	11/11/2009
Run Number	One
Depth Driller	3475
Depth Logger	3465
Bottom Logged Interval	3464
Top Log Interval	300
Casing Driller	8.625 @ 311
Casing Logger	316
Bit Size	7.875
Type Fluid in Hole	Chemical
Salinity, ppm CL	1800
Density / Viscosity	9.2 45
pH / Fluid Loss	8.0 10.0
Source of Sample	Flowline
Rm @ Meas. Temp	1.70 @ 65
Rmf @ Meas. Temp	1.28 @ 65
Rmc @ Meas. Temp	2.30 @ 65
Source of Rmf / Rmc	Charts
Rm @ BHT	1.00 @ 111
Operating Rig Time	2 Hours
Max Rec. Temp. F	111
Equipment Number	15
Location	Hays
Recorded By	B. Becker
Witnessed By	Mike Engelbrecht

<<< Fold Here >>>

All interpretations are opinions based on inferences from electrical or other measurements and we cannot and do not guarantee the accuracy or correctness of any interpretation, and we shall not, except in the case of gross or willful negligence on our part, be liable or responsible for any loss, costs, damages, or expenses incurred or sustained by anyone resulting from any interpretation made by any of our officers, agents or employees. These interpretations are also subject to our general terms and conditions set out in our current Price Schedule.

Comments

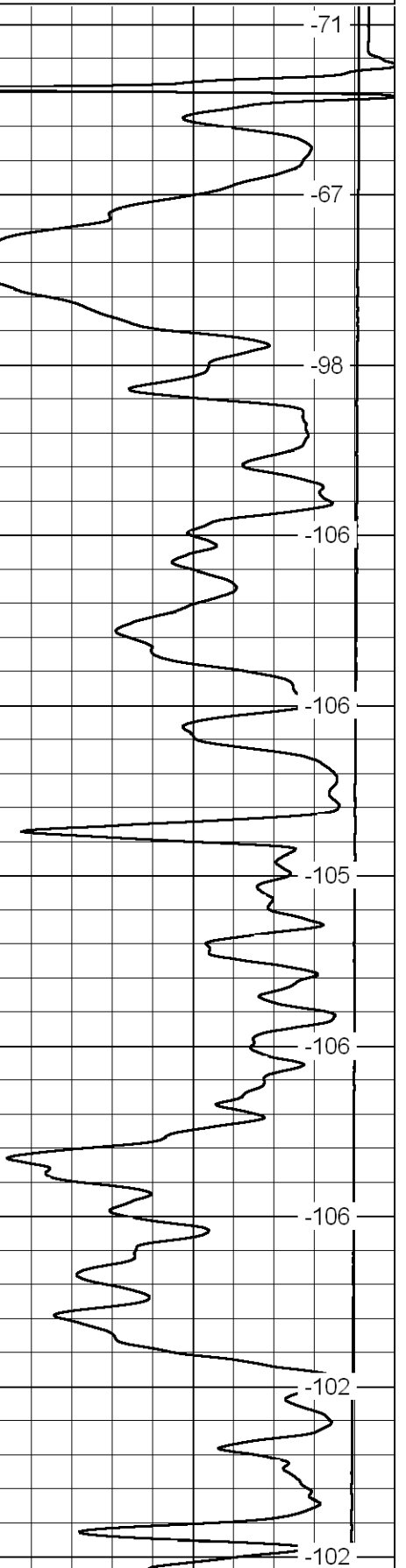
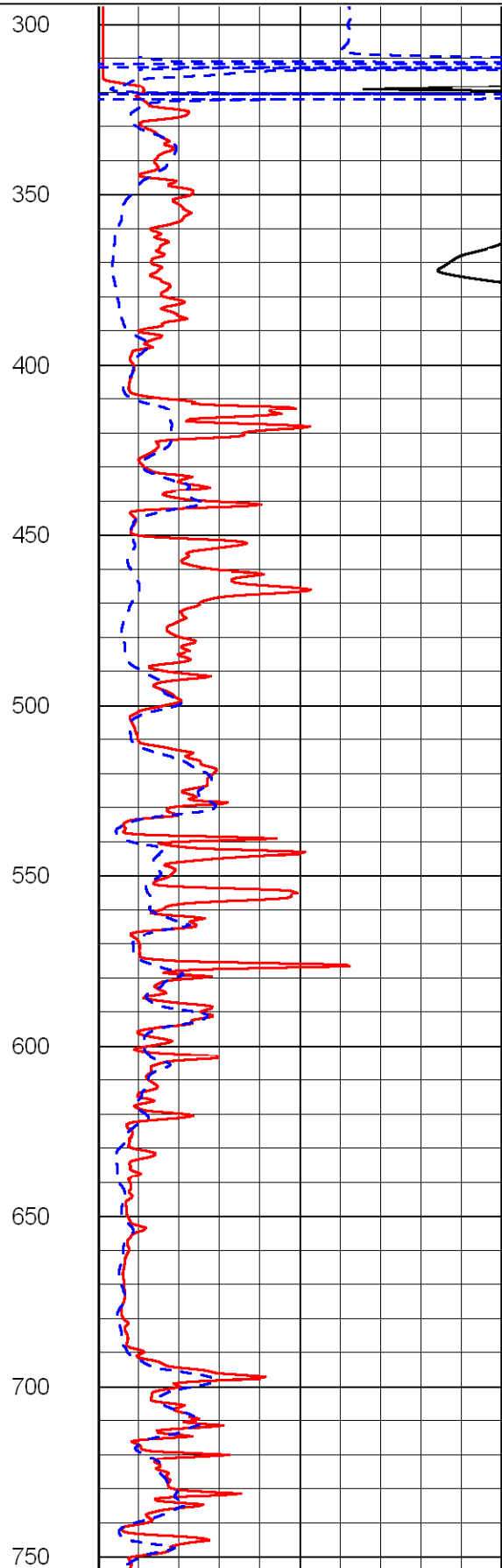
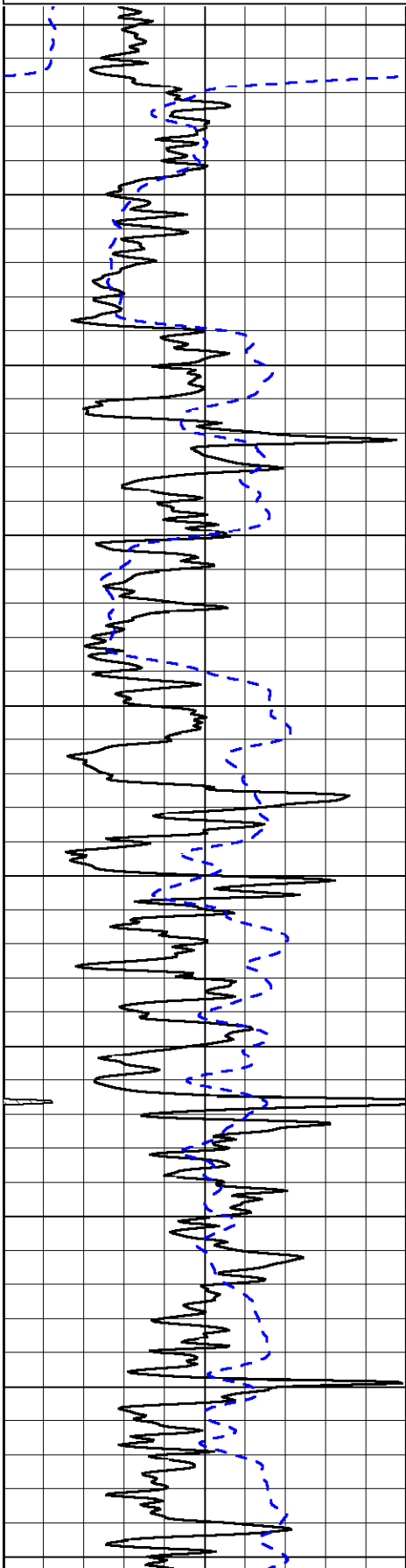
Thank you for using Log-Tech, Inc.
 (785) 625-3858
 I-35 & Exit 4; East to 11 Rd;
 1-1/2 North; East Into

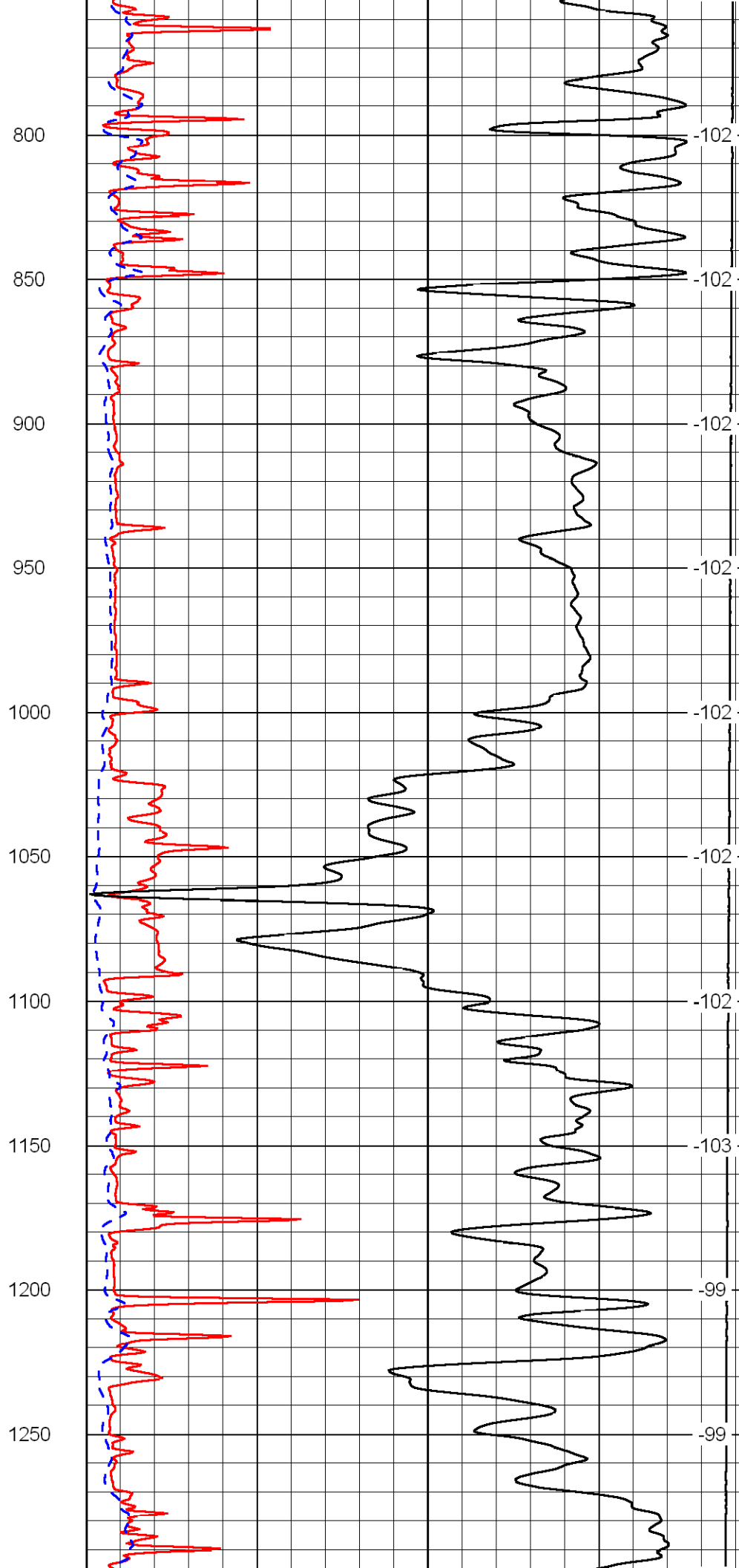
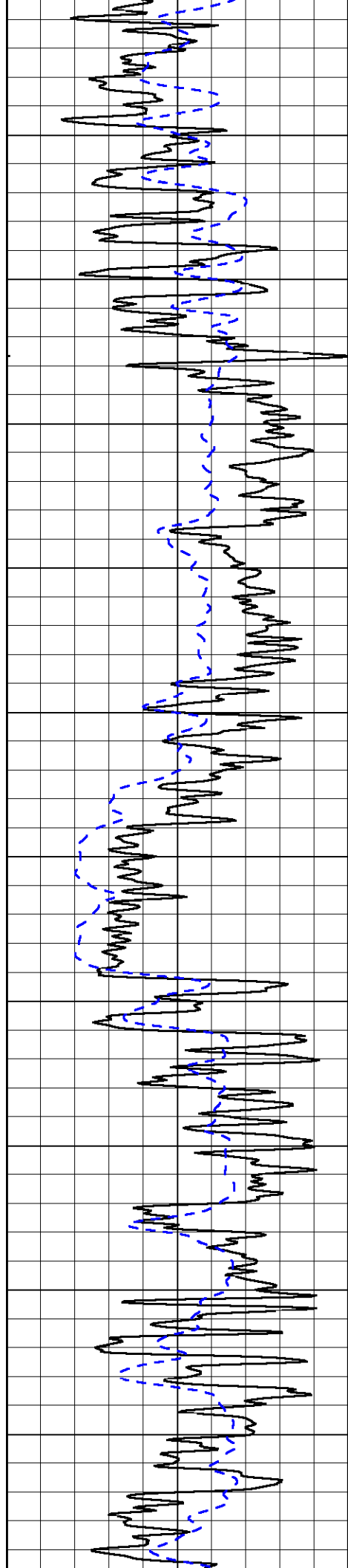
Database File: c:\warrior\data\A.A.S. oil_marrs #2\AASHD.DB
 Dataset Pathname: DIL/aasstk
 Presentation Format: dil2in
 Dataset Creation: Wed Nov 11 08:45:50 2009
 Charted by: Depth in Feet scaled 1:600

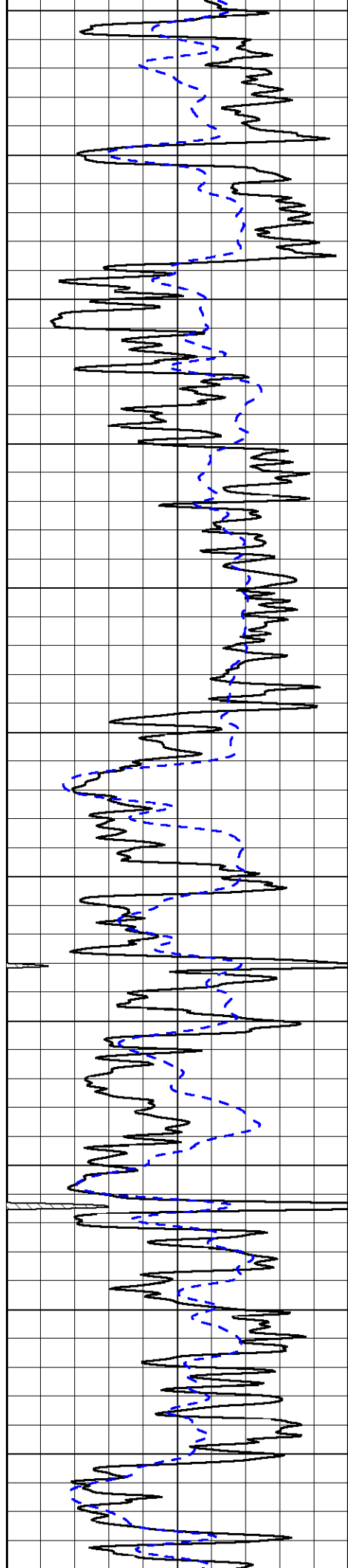
0 Gamma Ray 150
-200 SP (MV) 0

0 Shallow Resistivity (Ohm-m) 50
0 Deep Resistivity (Ohm-m) 50
1000 Conductivity (mmho/m) 0
15000 Line Tension (lb) 0
50 Shallow Resistivity (Ohm-m) 500
50 Deep Resistivity (Ohm-m) 500

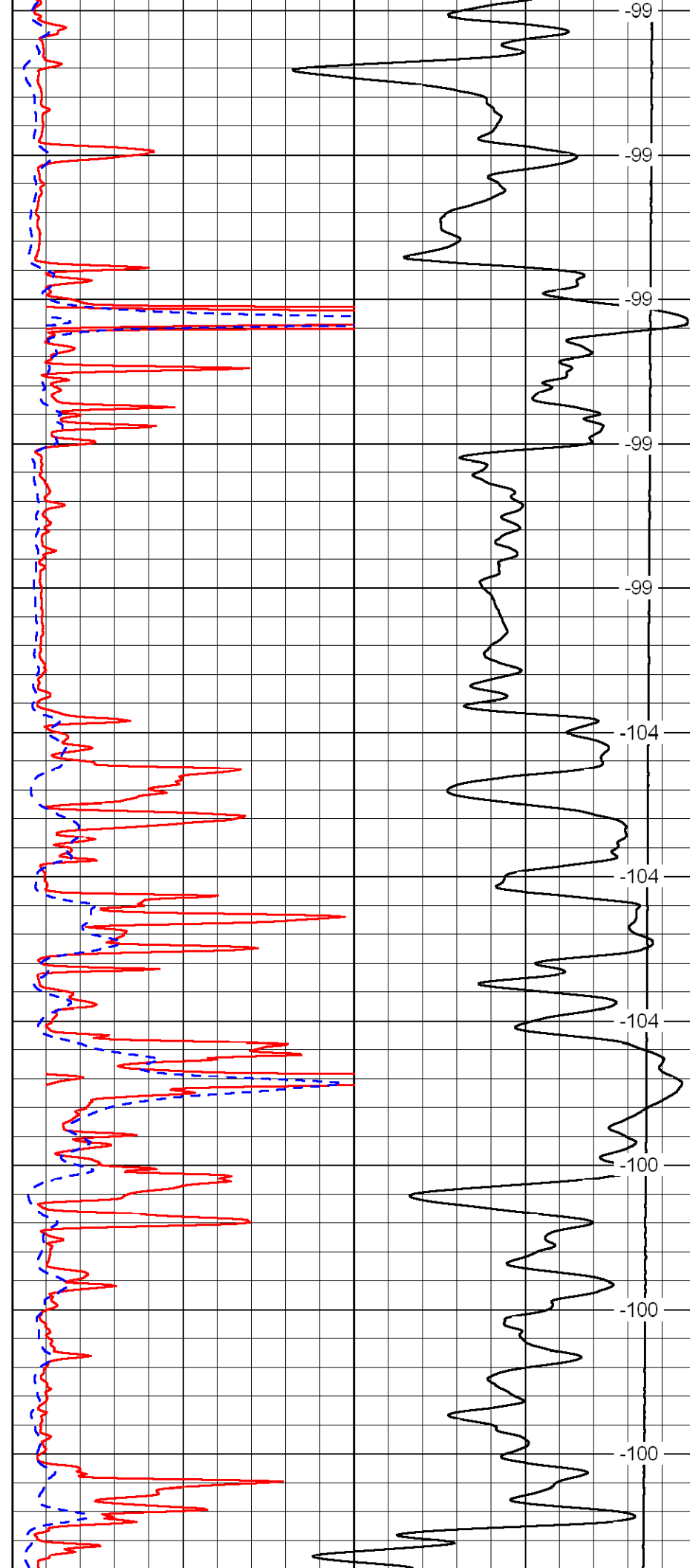
LSPD
(ft/min)



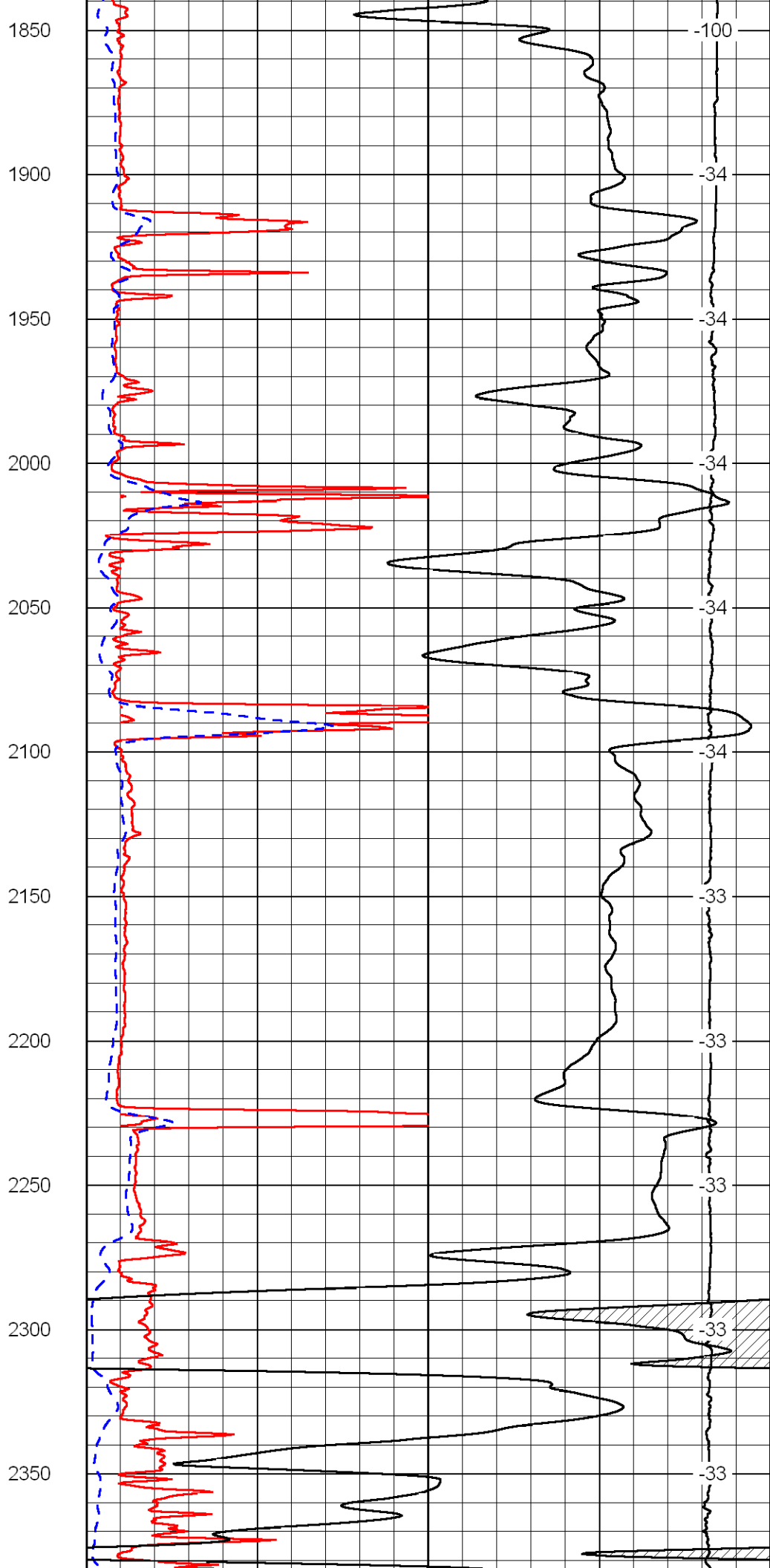
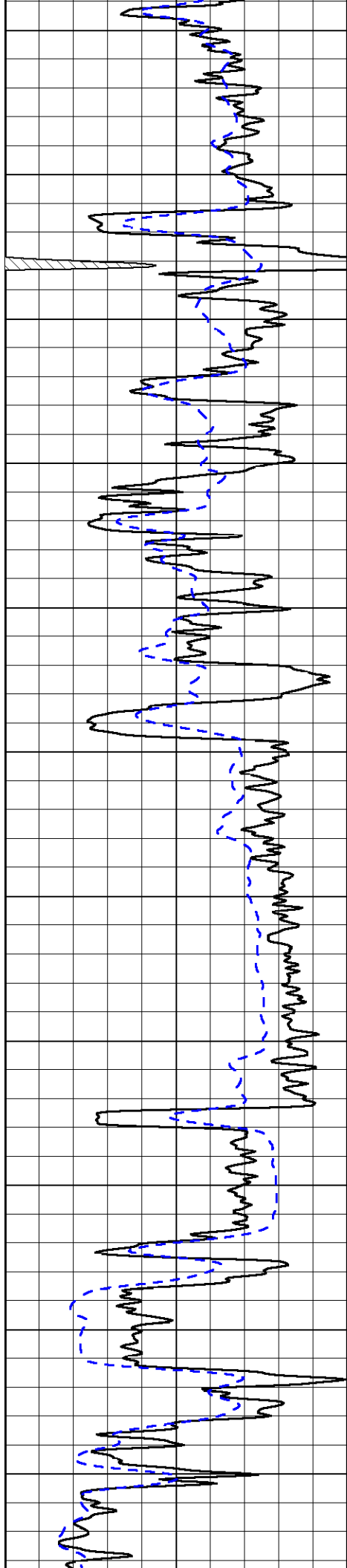


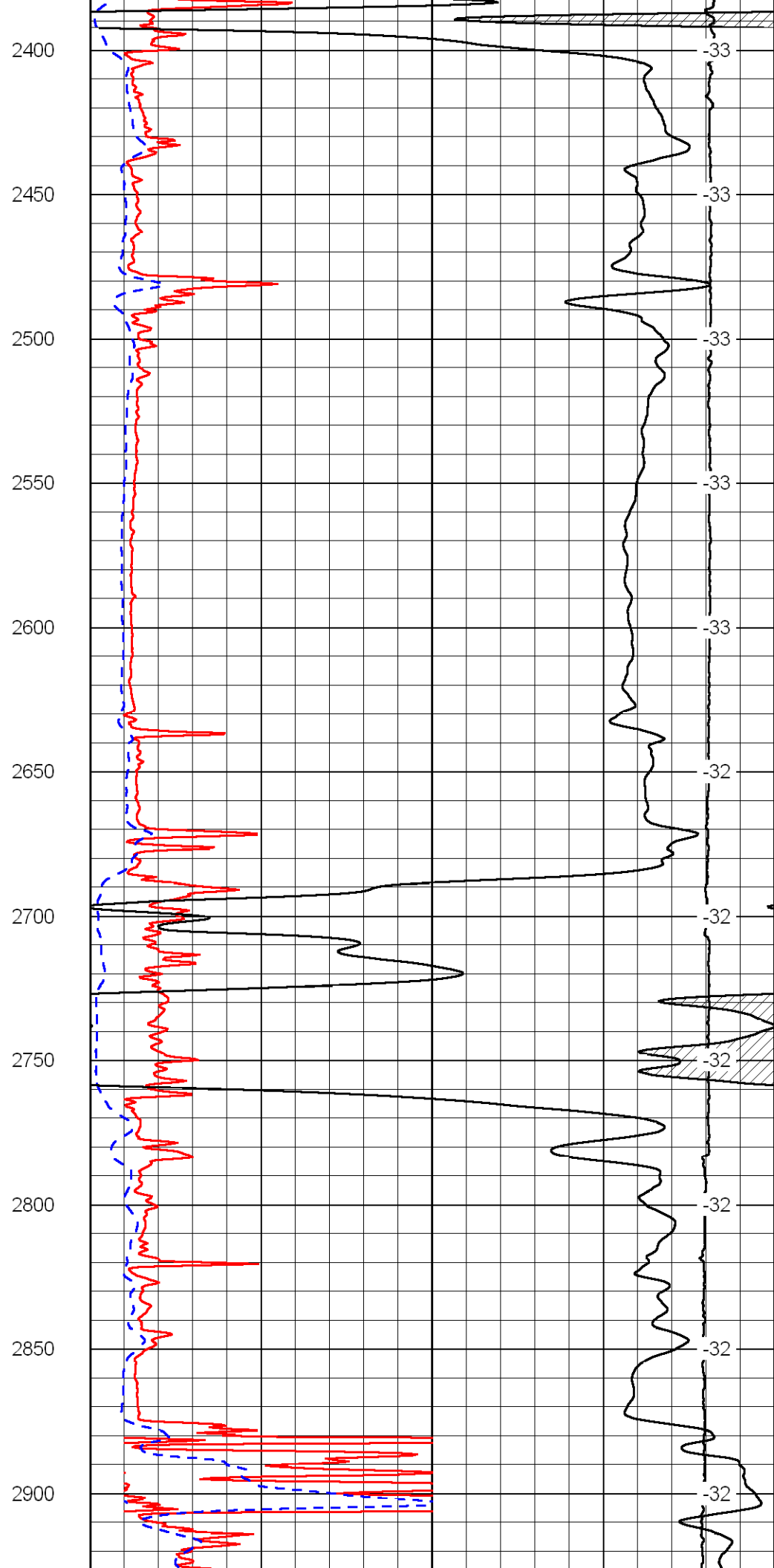
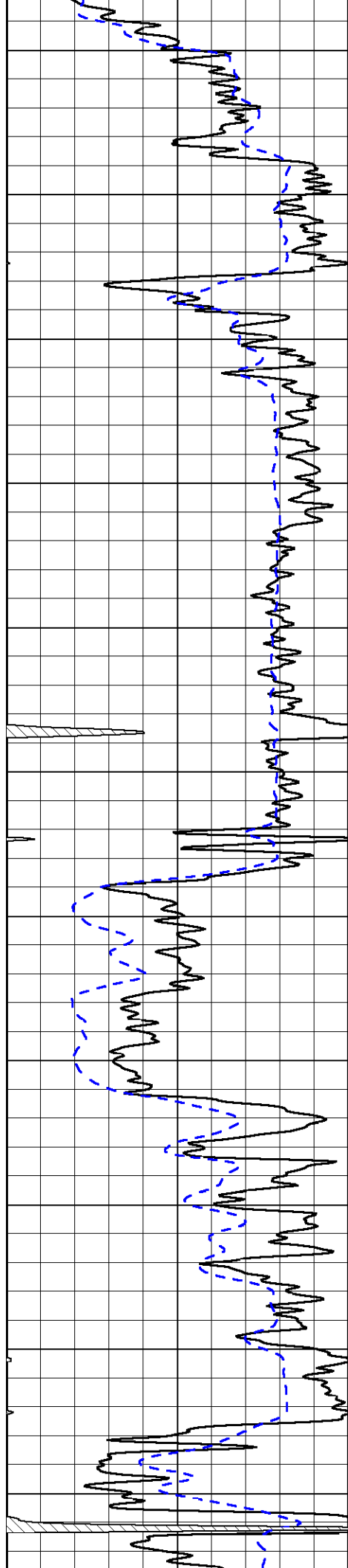


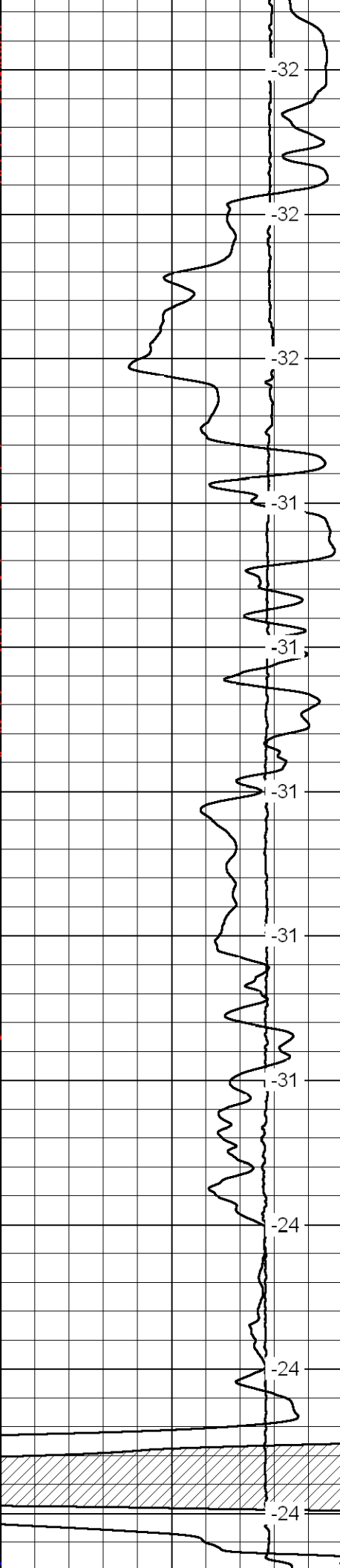
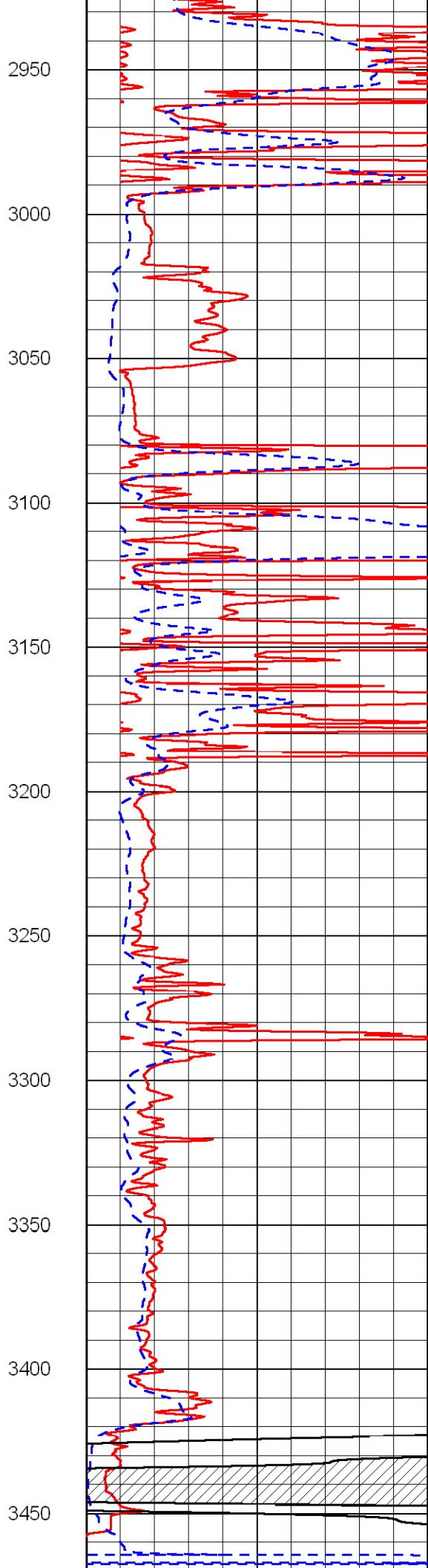
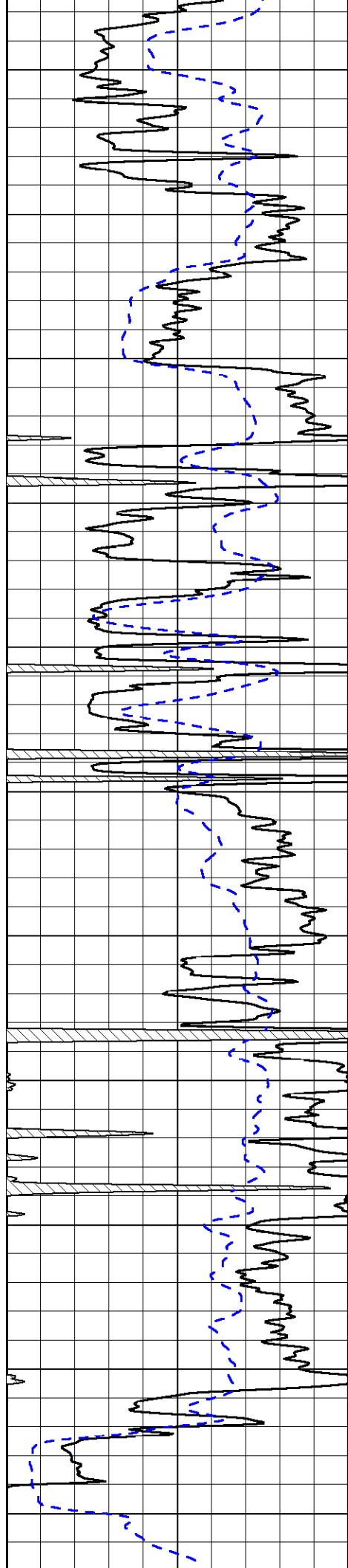
1300
1350
1400
1450
1500
1550
1600
1650
1700
1750
1800



-99
-99
-99
-99
-99
-104
-104
-104
-104
-100
-100
-100







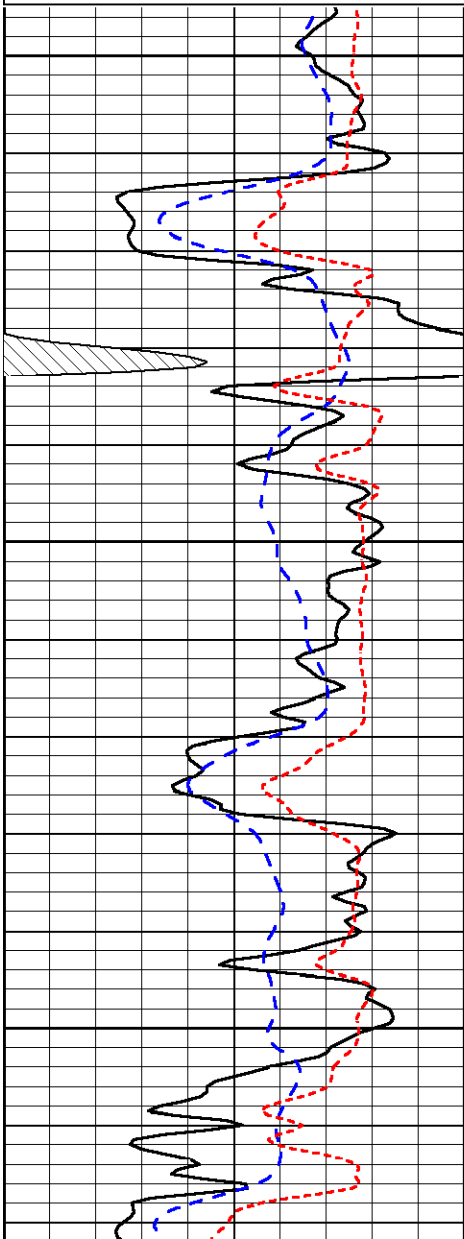
0	Gamma Ray	150
-200	SP (MV)	0

0	Shallow Resistivity (Ohm-m)	50	LSPD (ft/min)
0	Deep Resistivity (Ohm-m)	50	
1000	Conductivity (mmho/m)		0
15000	Line Tension (lb)		0
Shallow Resistivity			
50	(Ohm-m)	500	
50	Deep Resistivity (Ohm-m)	500	

Database File: c:\warrior\data\A.A.S oil_marrs #2\AASHD.DB
 Dataset Pathname: DIL/aasstk
 Presentation Format: dil
 Dataset Creation: Wed Nov 11 08:45:50 2009
 Charted by: Depth in Feet scaled 1:240

0	Gamma Ray	150
-200	SP (MV)	0
-160	Rxo / Rt	40

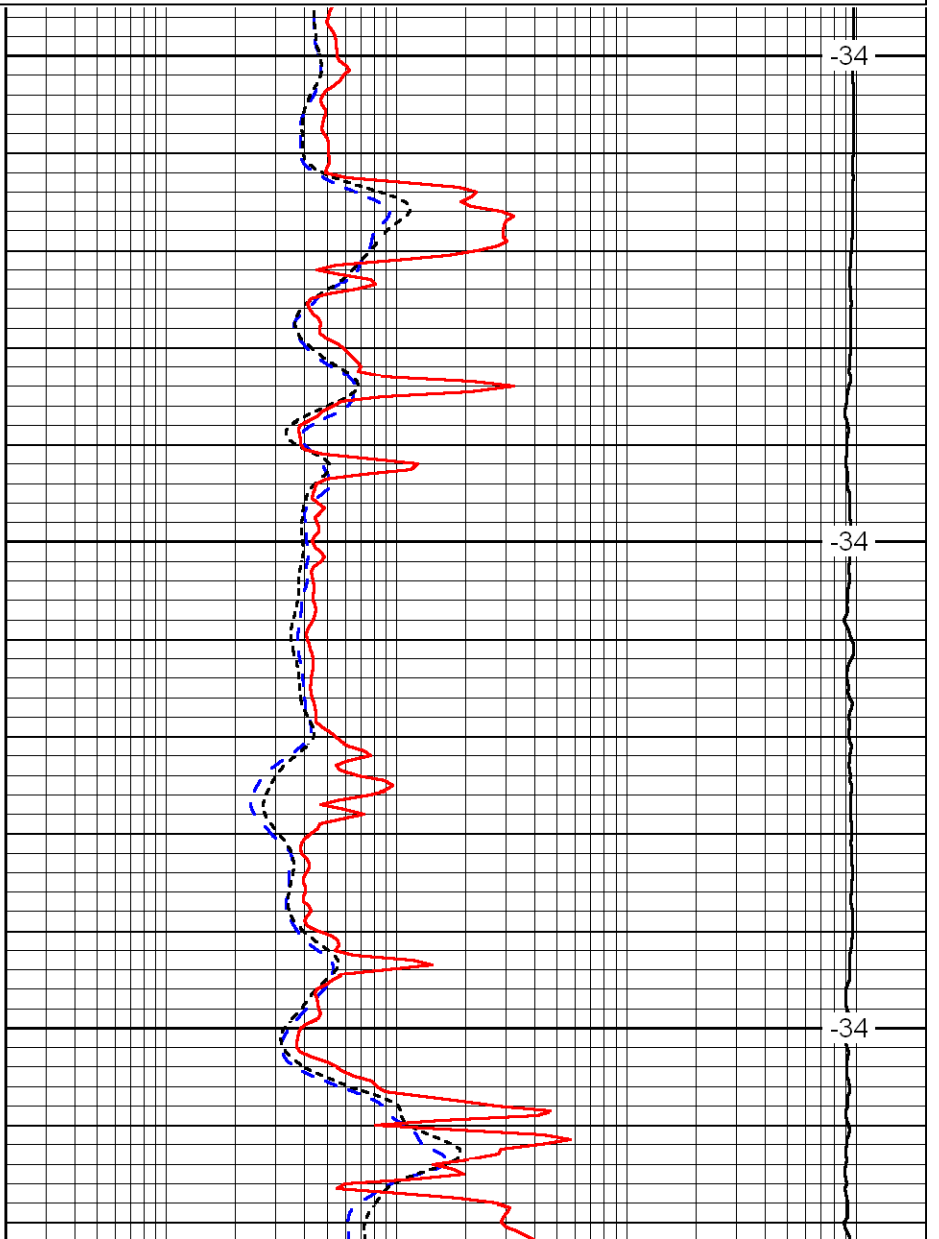
0.2	Deep Resistivity (Ohm-m)	2000	
0.2	Medium Resistivity (Ohm-m)	2000	
0.2	Shallow Resistivity (Ohm-m)	2000	
15000	Line Tension (lb)		0
			LSPD (ft/min)



1900

1950

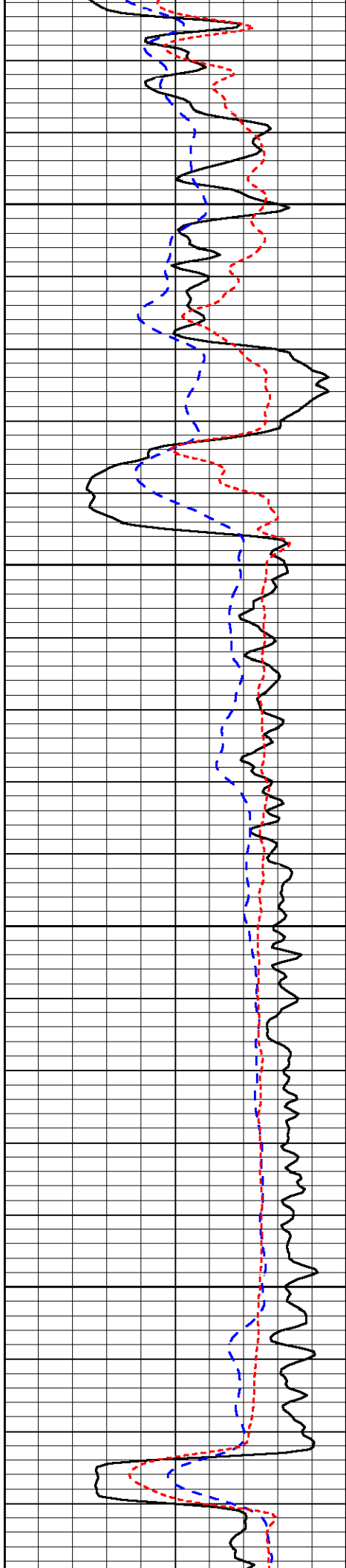
2000



-34

-34

-34



2050

2100

2150

2200

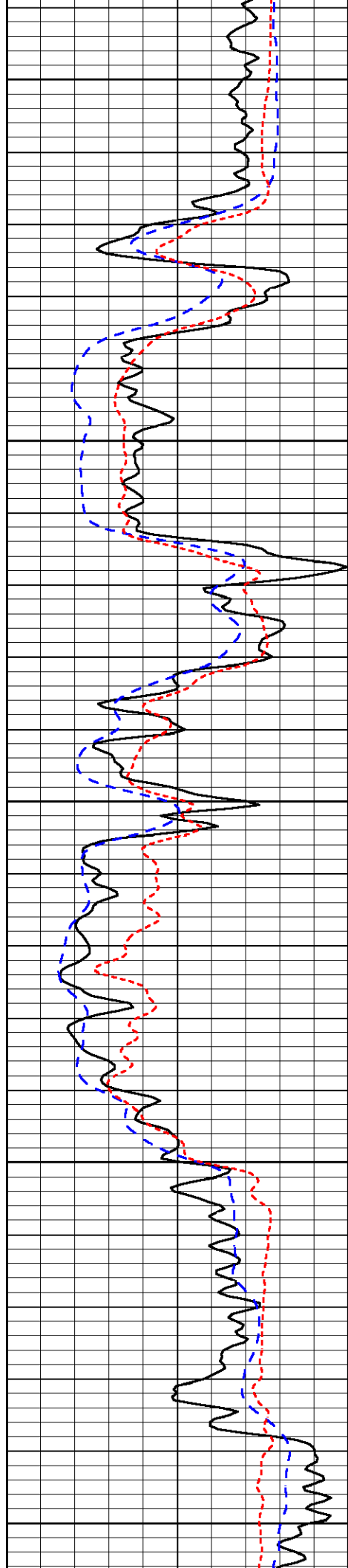


-34

-34

-33

-33



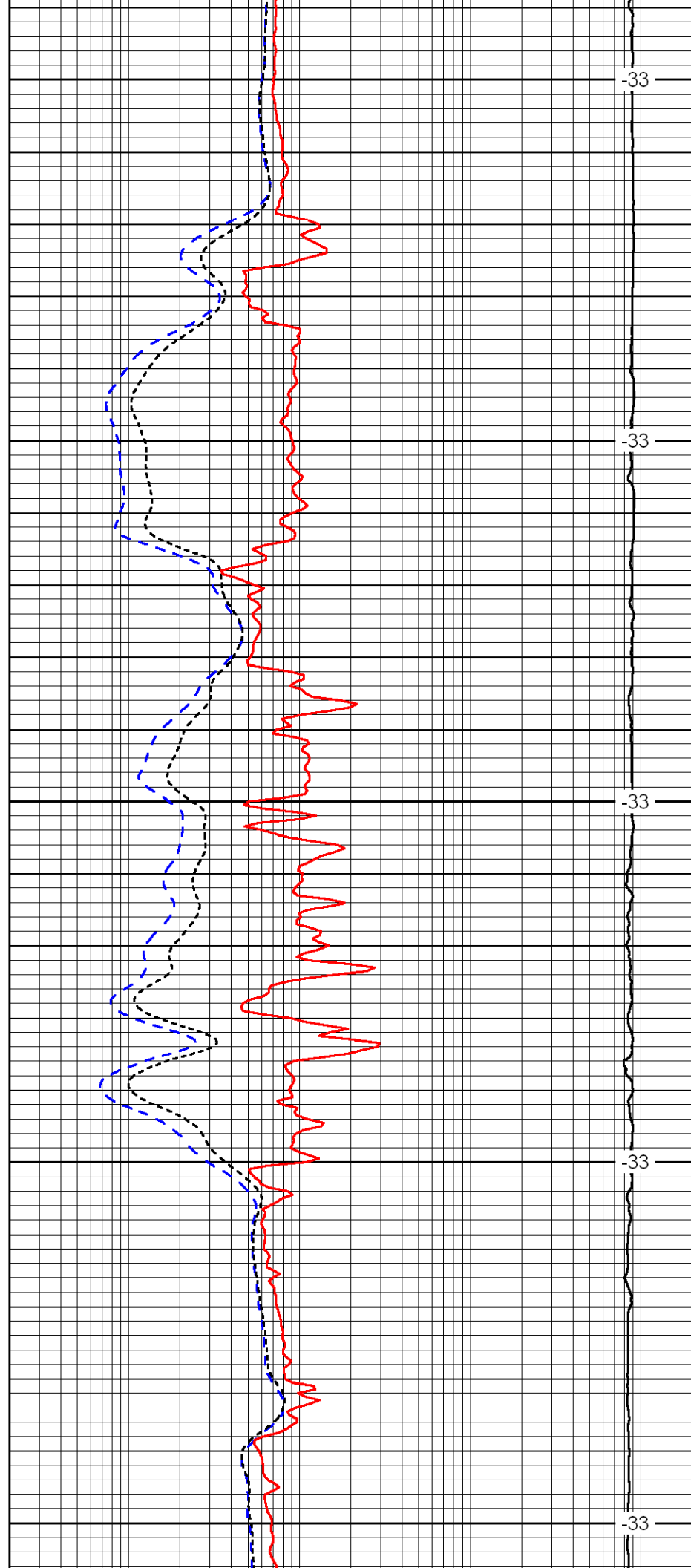
2250

2300

2350

2400

2450



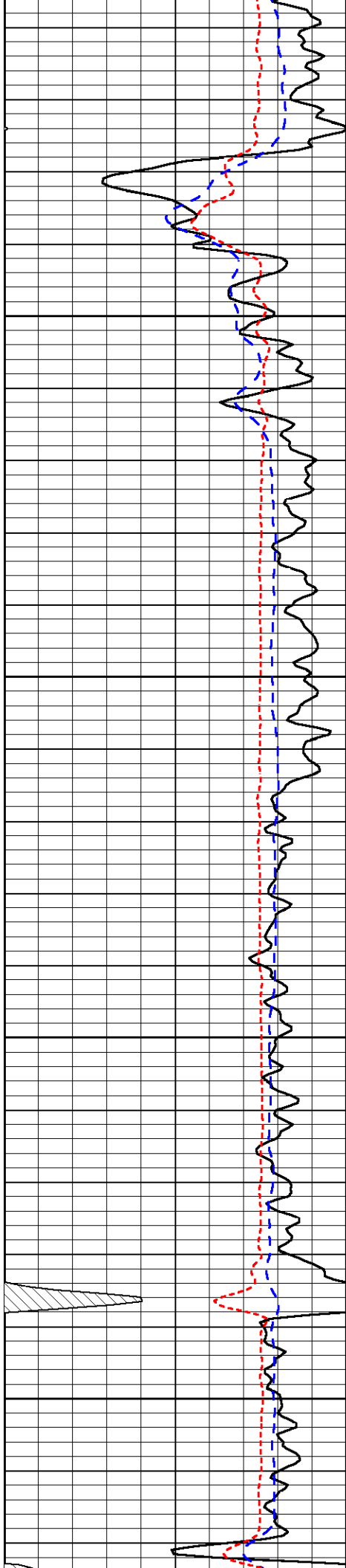
-33

-33

-33

-33

-33

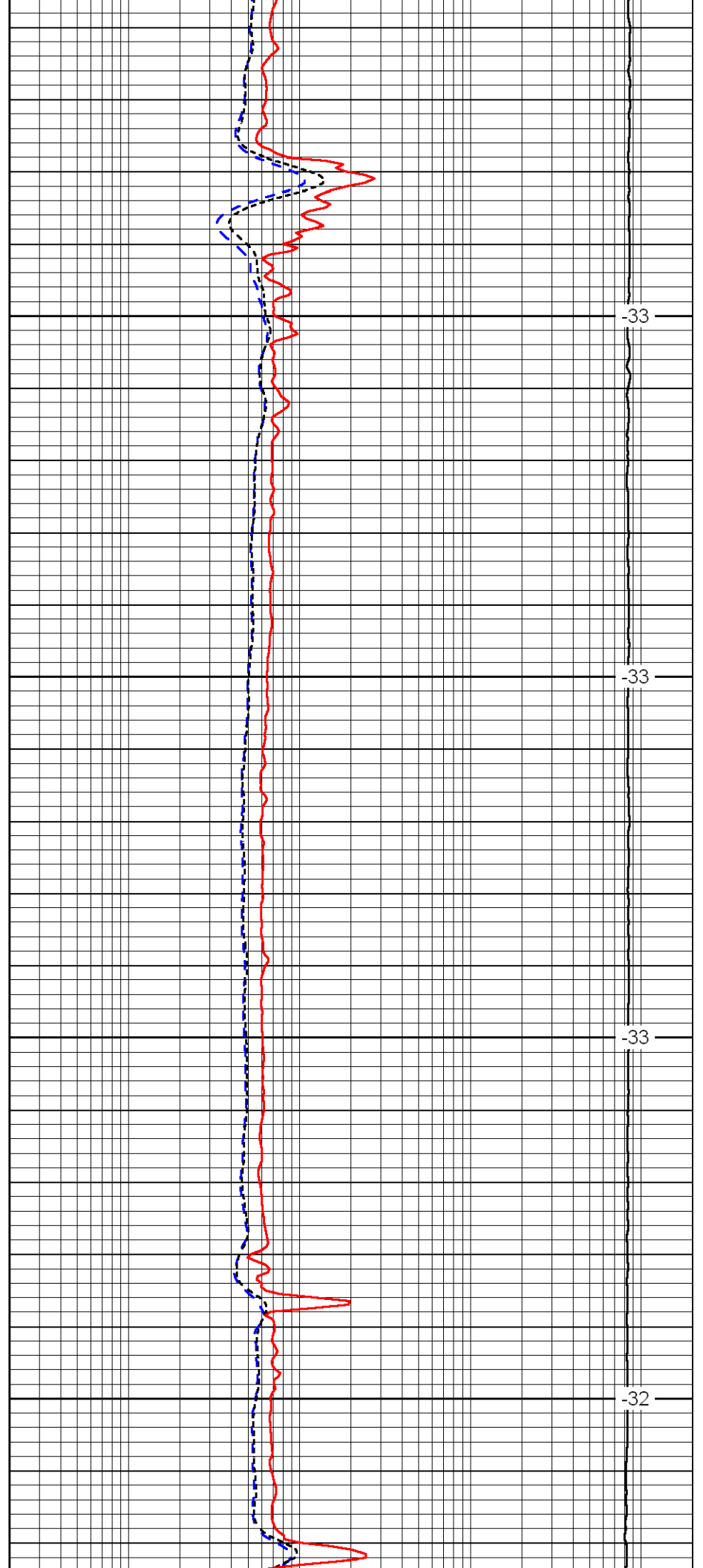


2500

2550

2600

2650

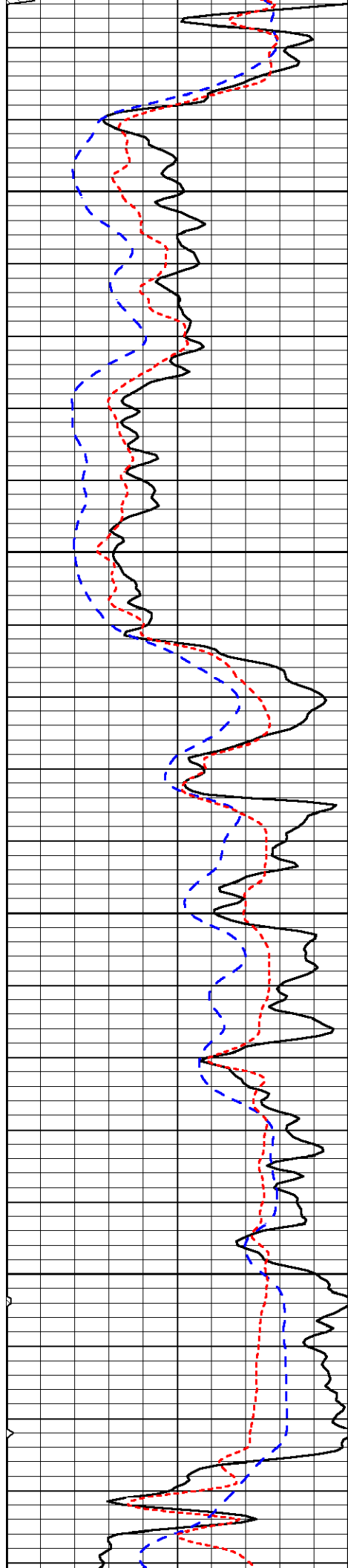


-33

-33

-33

-32

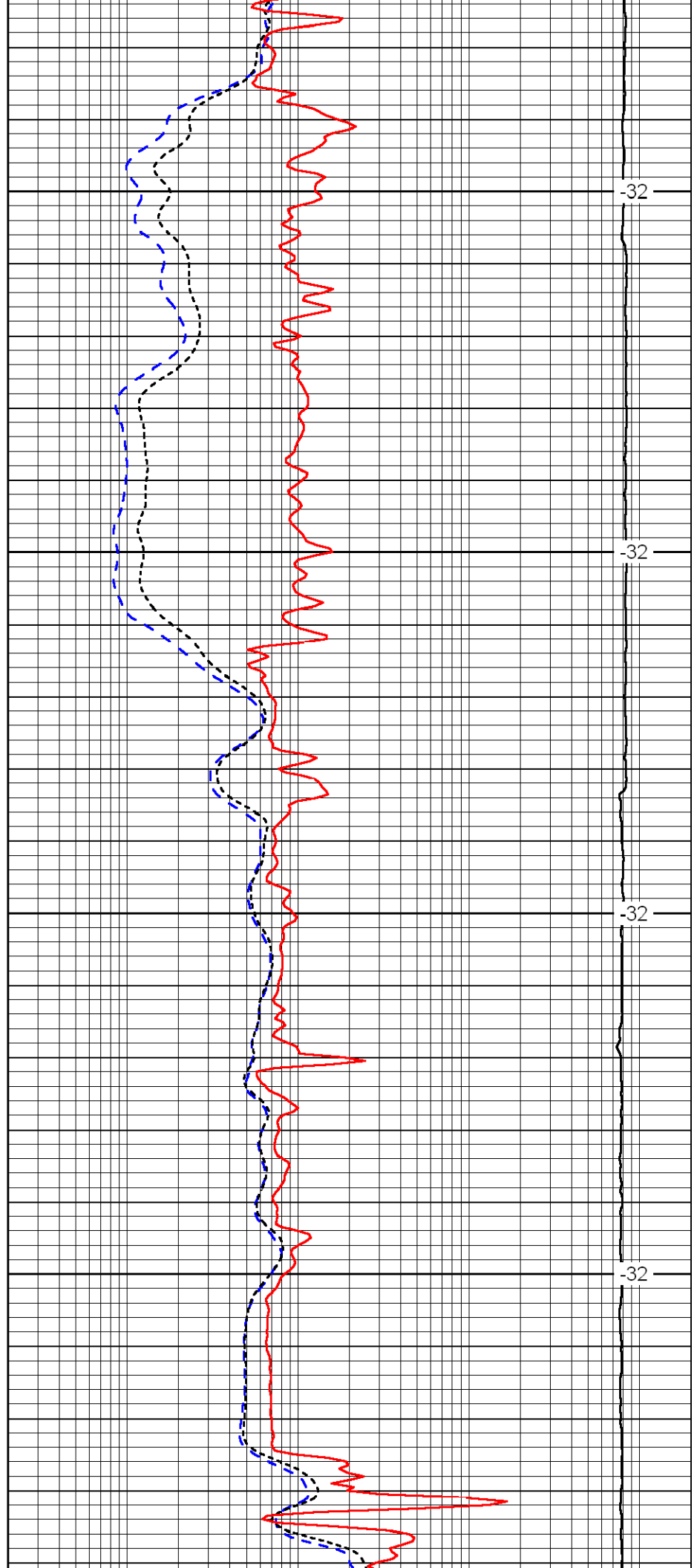


2700

2750

2800

2850

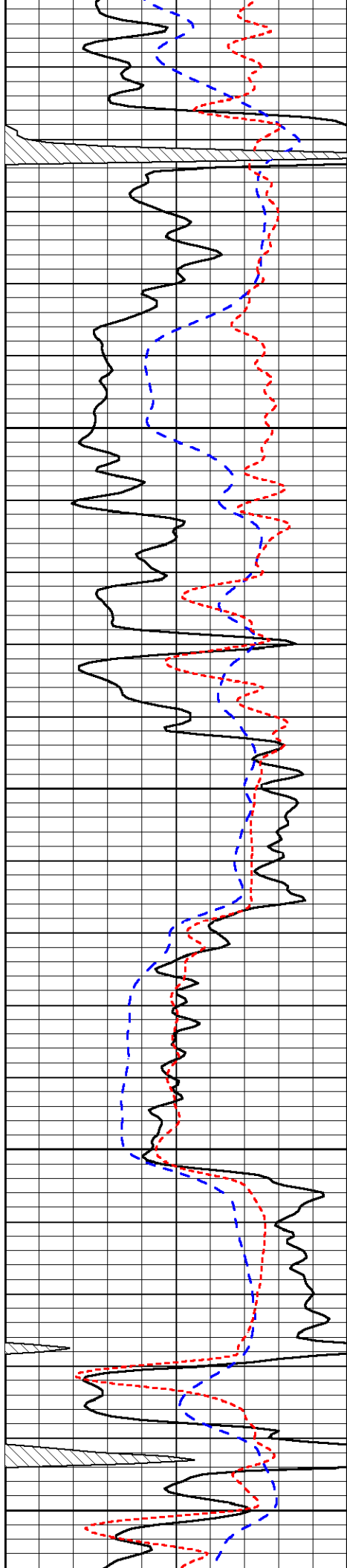


-32

-32

-32

-32



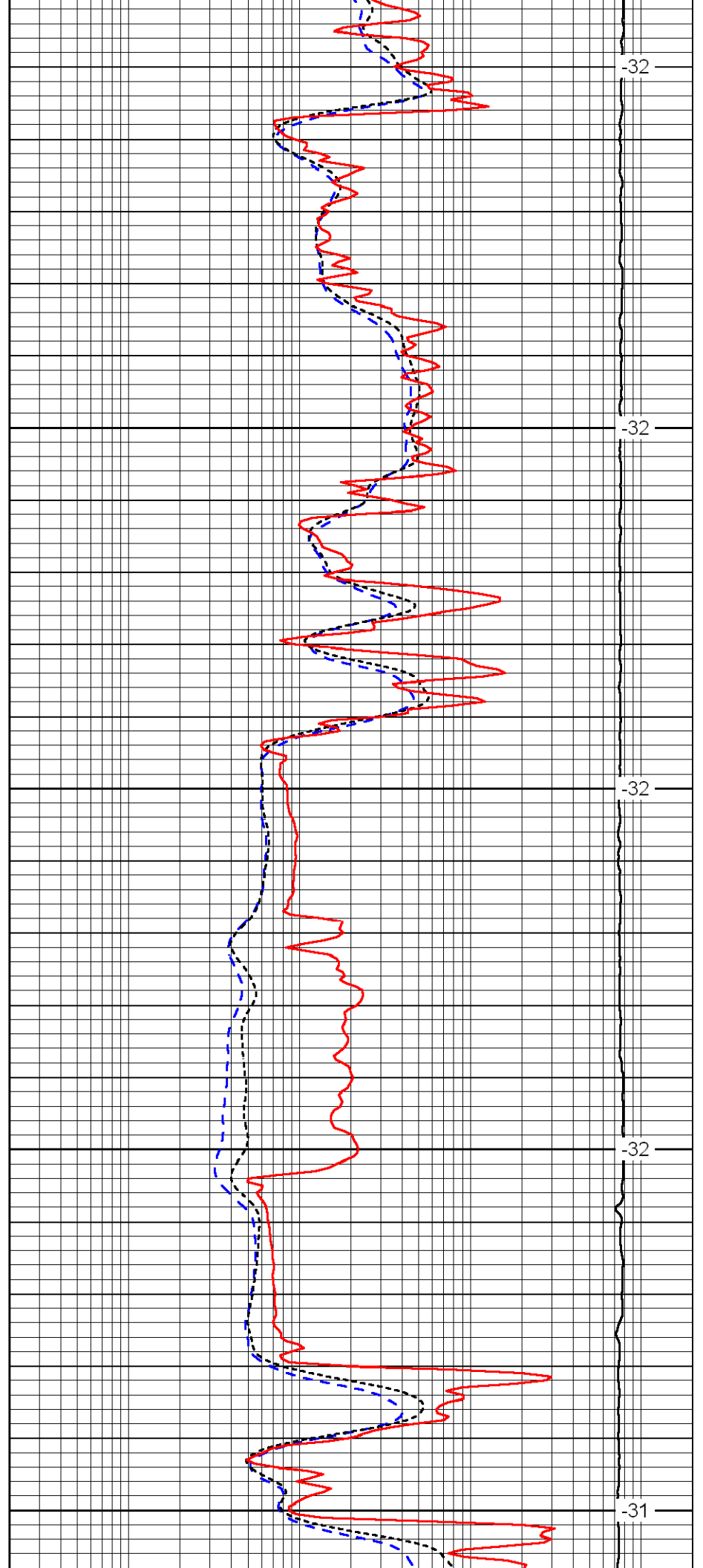
2900

2950

3000

3050

3100



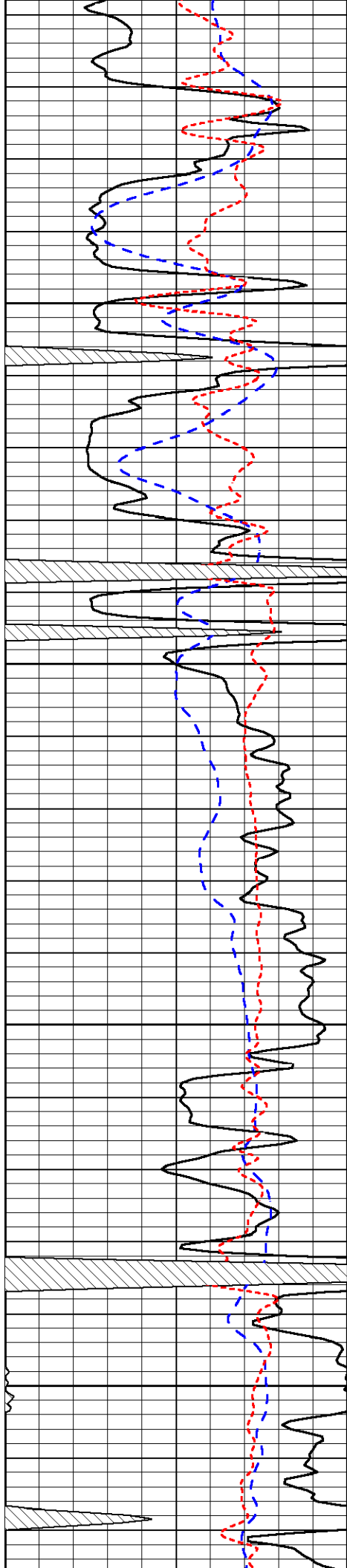
-32

-32

-32

-32

-31

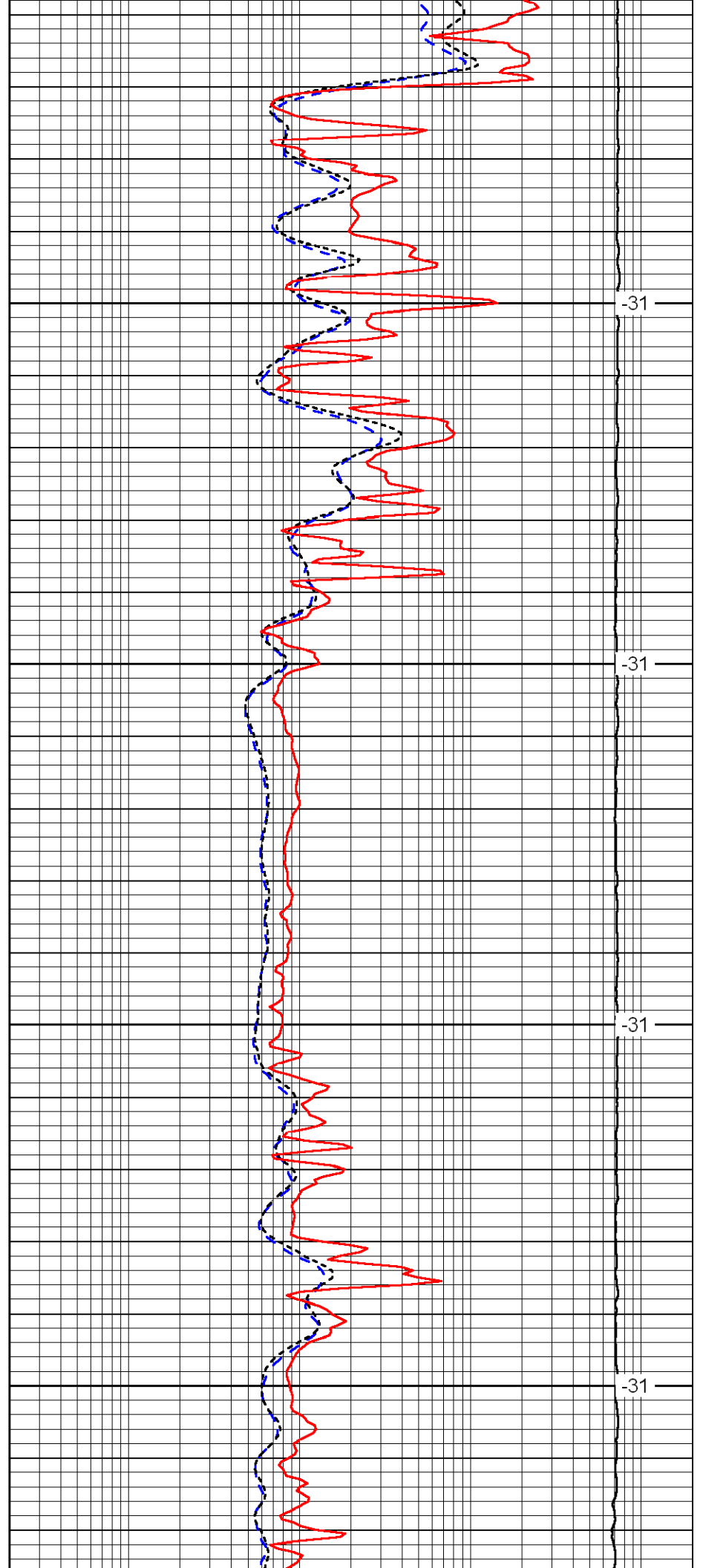


3150

3200

3250

3300

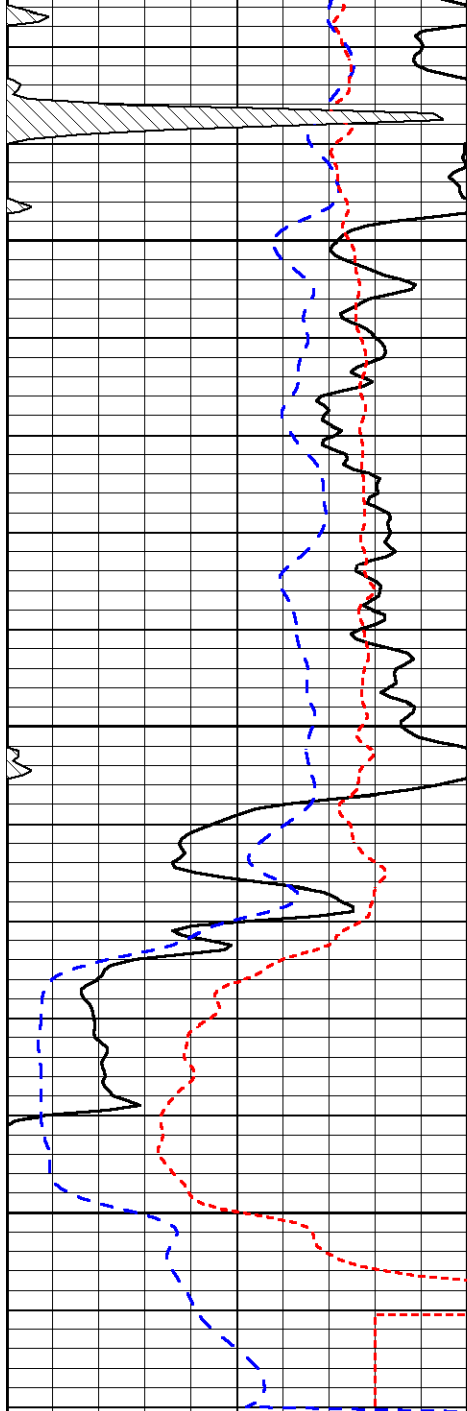


-31

-31

-31

-31

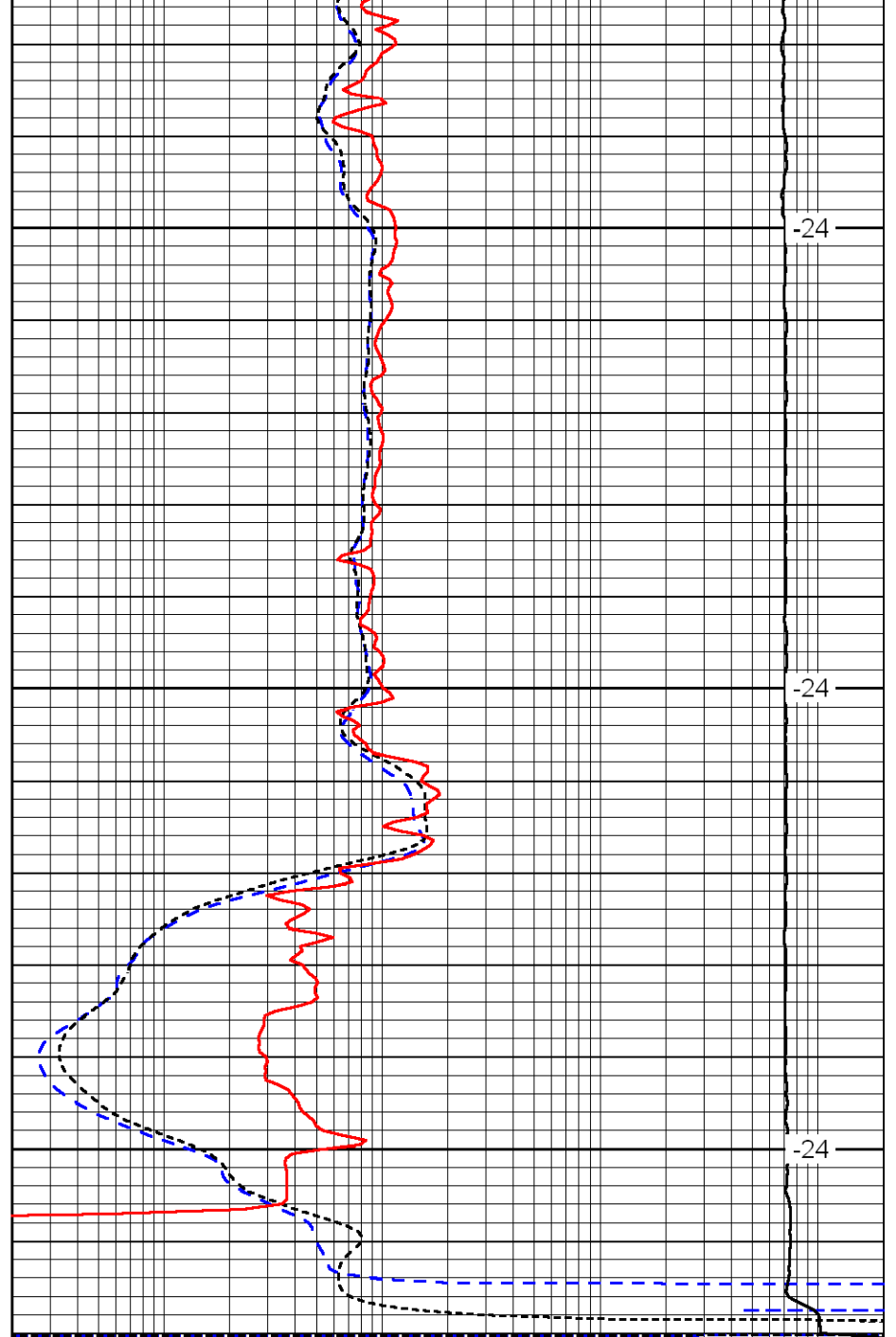


3350

3400

3450

0	Gamma Ray	150
-200	SP (MV)	0
-160	Rxo / Rt	40



-24

-24

-24

0.2	Deep Resistivity (Ohm-m)	2000
0.2	Medium Resistivity (Ohm-m)	2000
0.2	Shallow Resistivity (Ohm-m)	2000
15000	Line Tension (lb)	0

LSPD
(ft/min)