



Dual Compensated
Porosity Log

DIGITAL LOG (785) 625-3858

API No.	15-035-24,342-00-00	
Company	AAS Oil Company	
Well	Marrs No. 2	
Field	Gibson Pool	
County	Cowley	
State	Kansas	
Location	W/2 - W/2 - SW 1470' FSL & 330' FWL	
Sec: 20	Twp: 34 S	Rge: 3 E
Permanent Datum	Ground Level	Elevation 1153
Log Measured From	Kelly Bushing	8 Ft. Above Perm. Datum
Drilling Measured From	Kelly Bushing	
Other Services	DIL	
Elevation	K.B. 1161	D.F. 1153
	G.L. 1153	

Date	11/11/2009	
Run Number	One	
Type Log	CNL / CDL	
Depth Driller	3475	
Depth Logger	3465	
Bottom Logged Interval	3444	
Top Logged Interval	1900	
Type Fluid In Hole	Chemical	
Salinity, PPM CL	1800	
Density	9.2	
Level	Full	
Max. Rec. Temp. F	111	
Operating Rig Time	2 Hours	
Equipment -- Location	15 Hays	
Recorded By	B. Becker	
Witnessed By	Mike Engelbrecht	

Run No	Bit	Borehole Record		Casing Record	
		From	To	From	To
1	12.25	00	311	8.625	24#
2	7.875	311	3475		

<<< Fold Here >>>

All interpretations are opinions based on inferences from electrical or other measurements and we cannot and do not guarantee the accuracy or correctness of any interpretation, and we shall not, except in the case of gross or willful negligence on our part, be liable or responsible for any loss, costs, damages, or expenses incurred or sustained by anyone resulting from any interpretation made by any of our officers, agents or employees. These interpretations are also subject to our general terms and conditions set out in our current Price Schedule.

Comments

Thank you for using Log-Tech, Inc.
(785) 625-3858

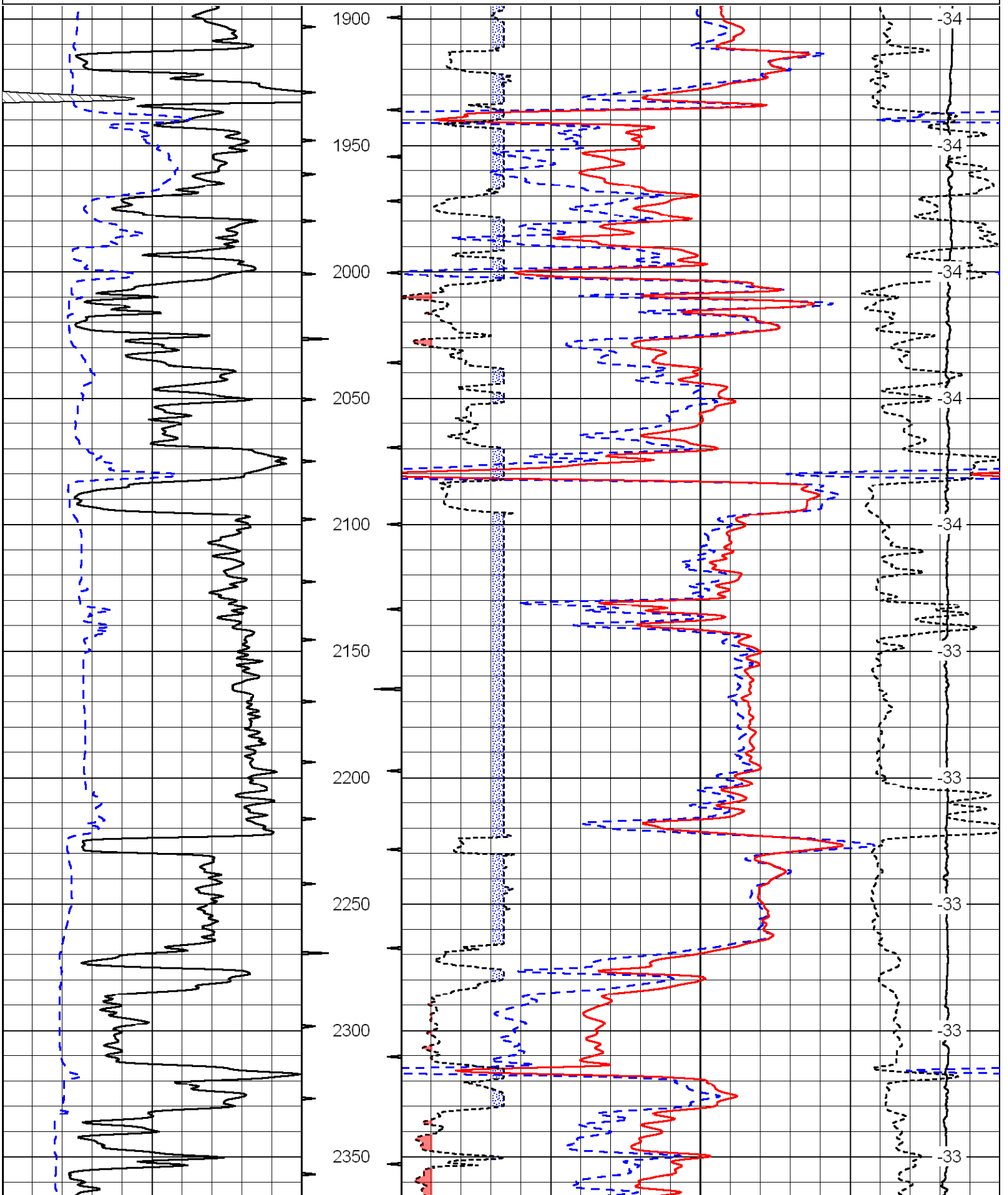
I-35 & Exit 4; East to 11 Rd;
1-1/2 North; East Into

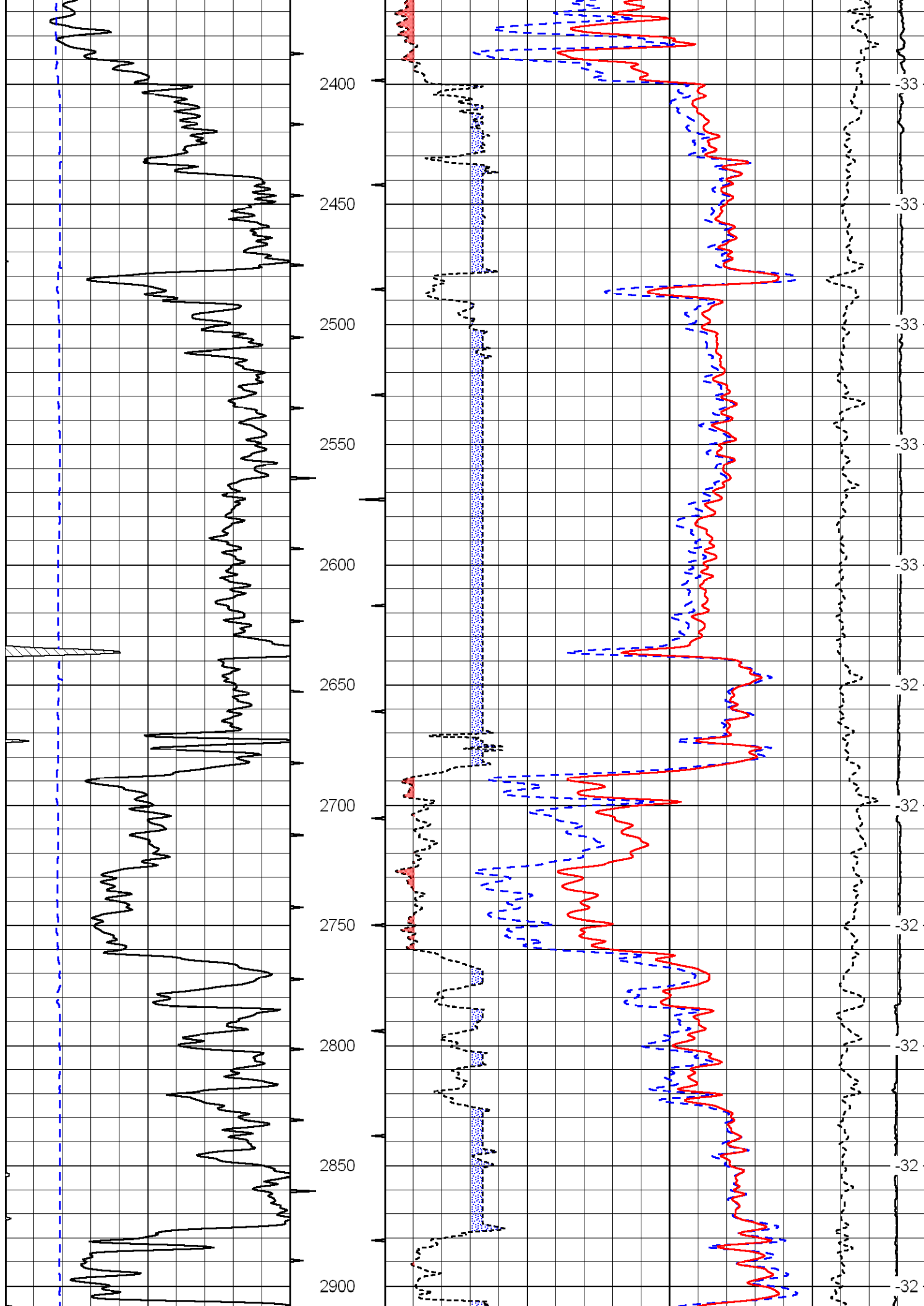
Database File: c:\warrior\data\A.A.S oil_marrs #2\AASHD.DB
 Dataset Pathname: DIL\AASSTK
 Presentation Format: CDL
 Dataset Creation: Wed Nov 11 08:45:50 2009
 Charted by: Depth in Feet scaled 1:600

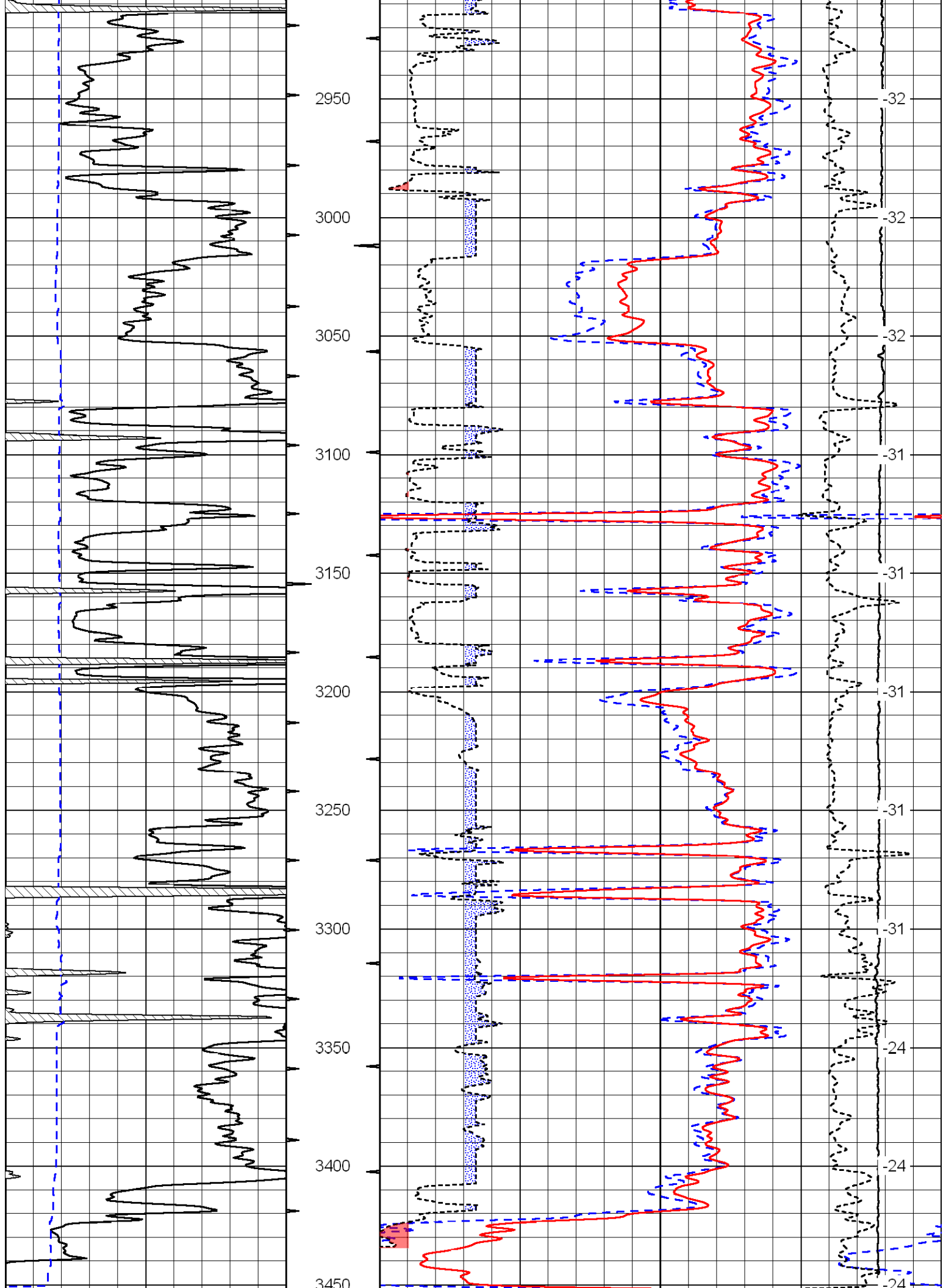
0	Gamma Ray	150
6	Caliper (in)	16

30	Compensated Density (pu)			-10	
2	Bulk Density (g/cc)			3	
15000	Line Tension (lb)			0	
2.625	DGA (g/cc)	3.425	-0.25	Correction (g/cc)	0.25

LSPD
(ft/min)







0	Gamma Ray	150
6	Caliper (in)	16

30	Compensated Density (pu)				-10
2	Bulk Density (g/cc)				3
15000	Line Tension (lb)				0
2.625	DGA (g/cc)	3.425	-0.25	Correction (g/cc)	0.25

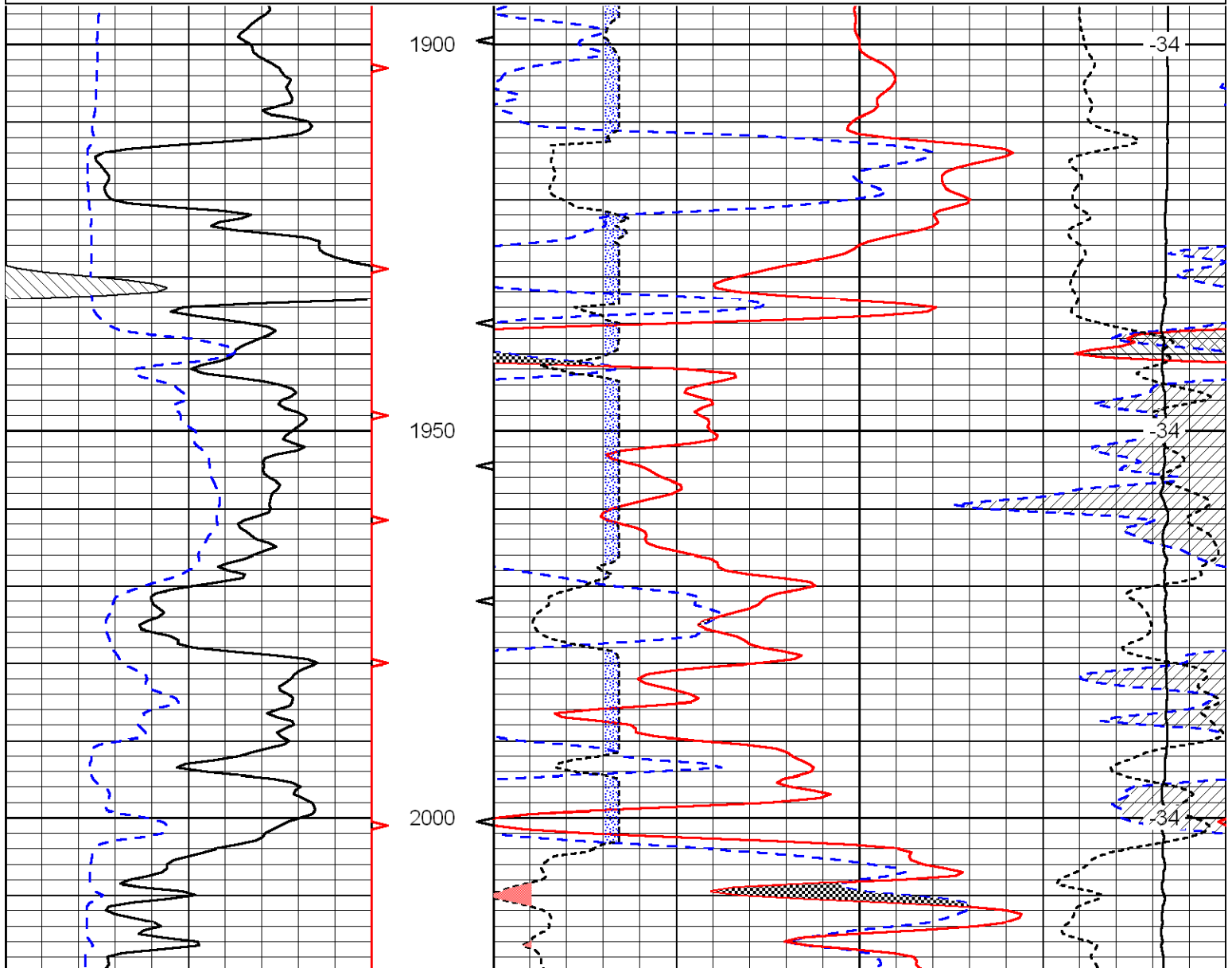
LSPD
(ft/min)

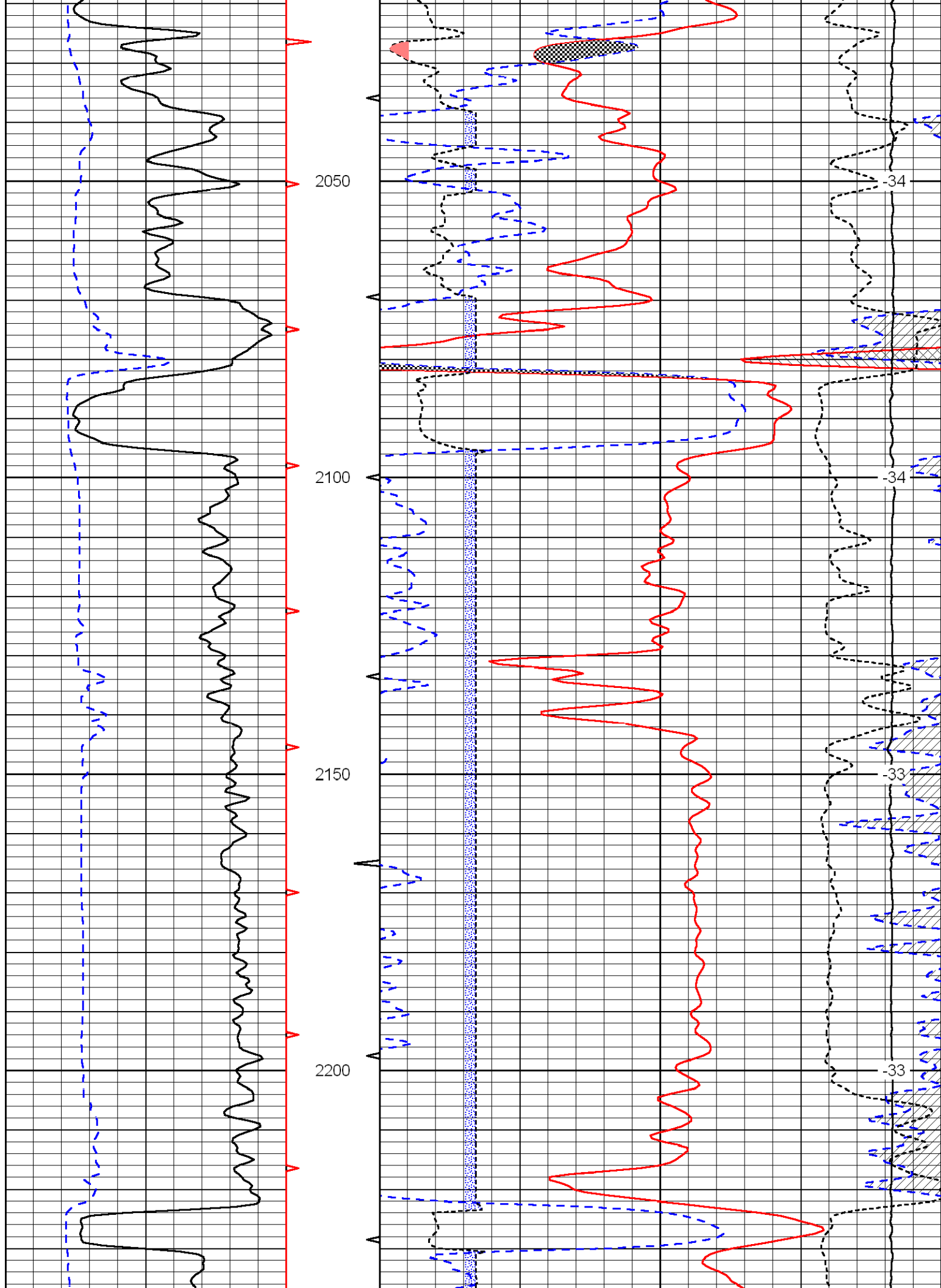
Database File: c:\warrior\data\A.A.S oil_marrs #2\AASHD.DB
 Dataset Pathname: DIL/aasstk
 Presentation Format: cndlspec
 Dataset Creation: Wed Nov 11 08:45:50 2009
 Charted by: Depth in Feet scaled 1:240

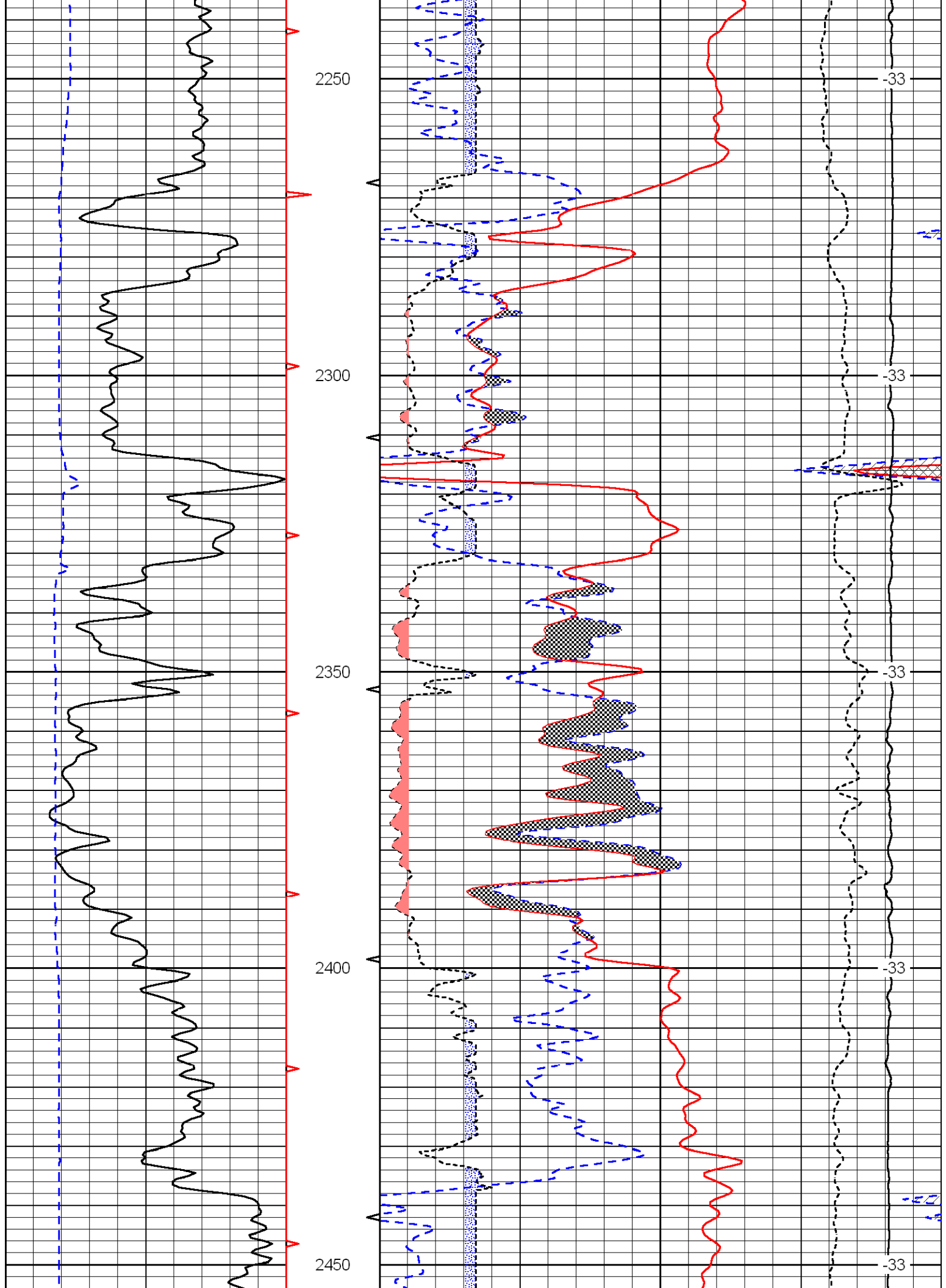
0	Gamma Ray	150
6	Caliper (in)	16

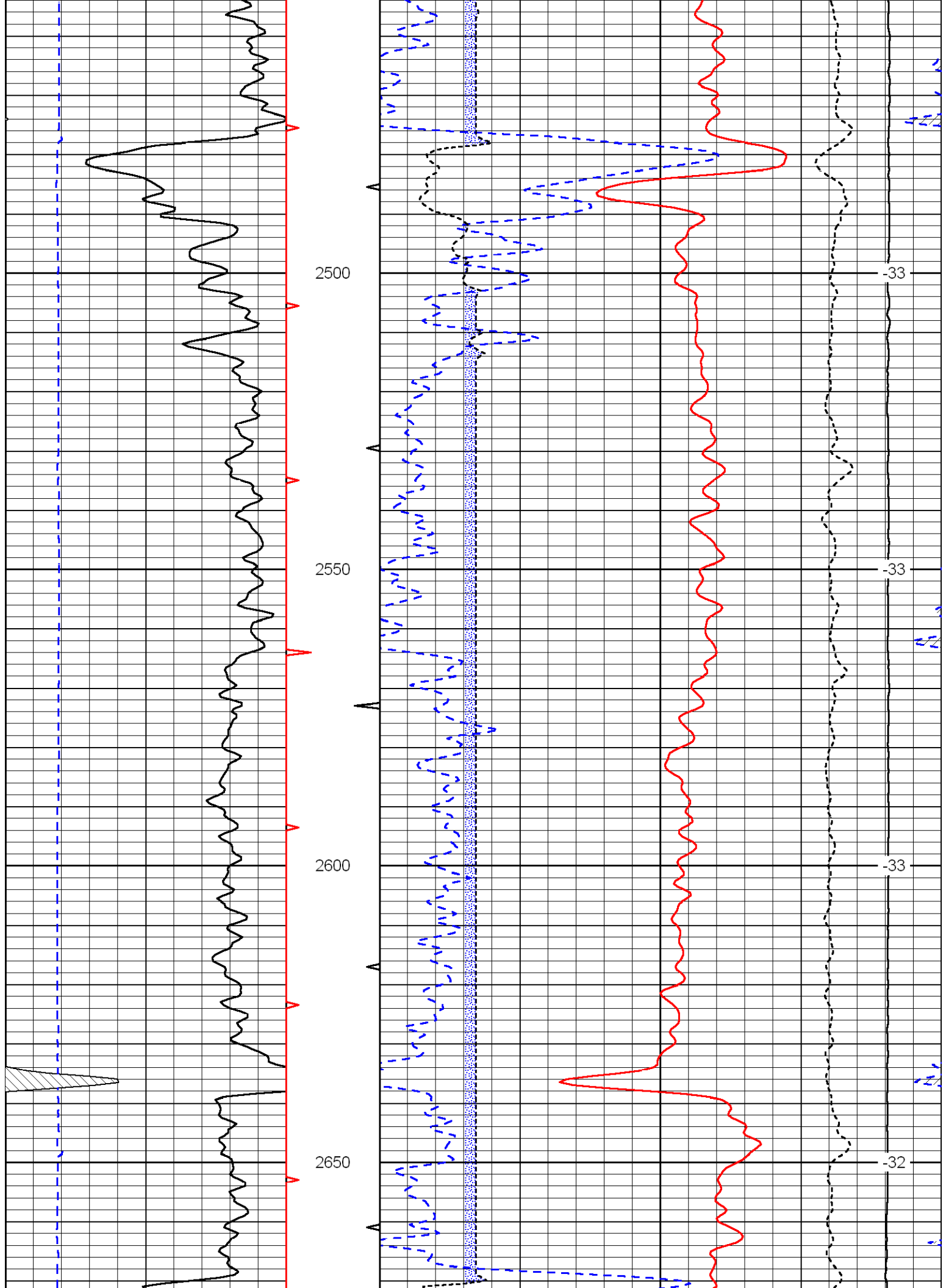
30	Compensated Neutron (Limestone) (pu)				-10
30	Compensated Density (2.71 ma) (pu)				-10
2.625	DGA (g/cc)	3.425	-0.25	Correction (g/cc)	0.25
15000	Line Tension (lb)				0

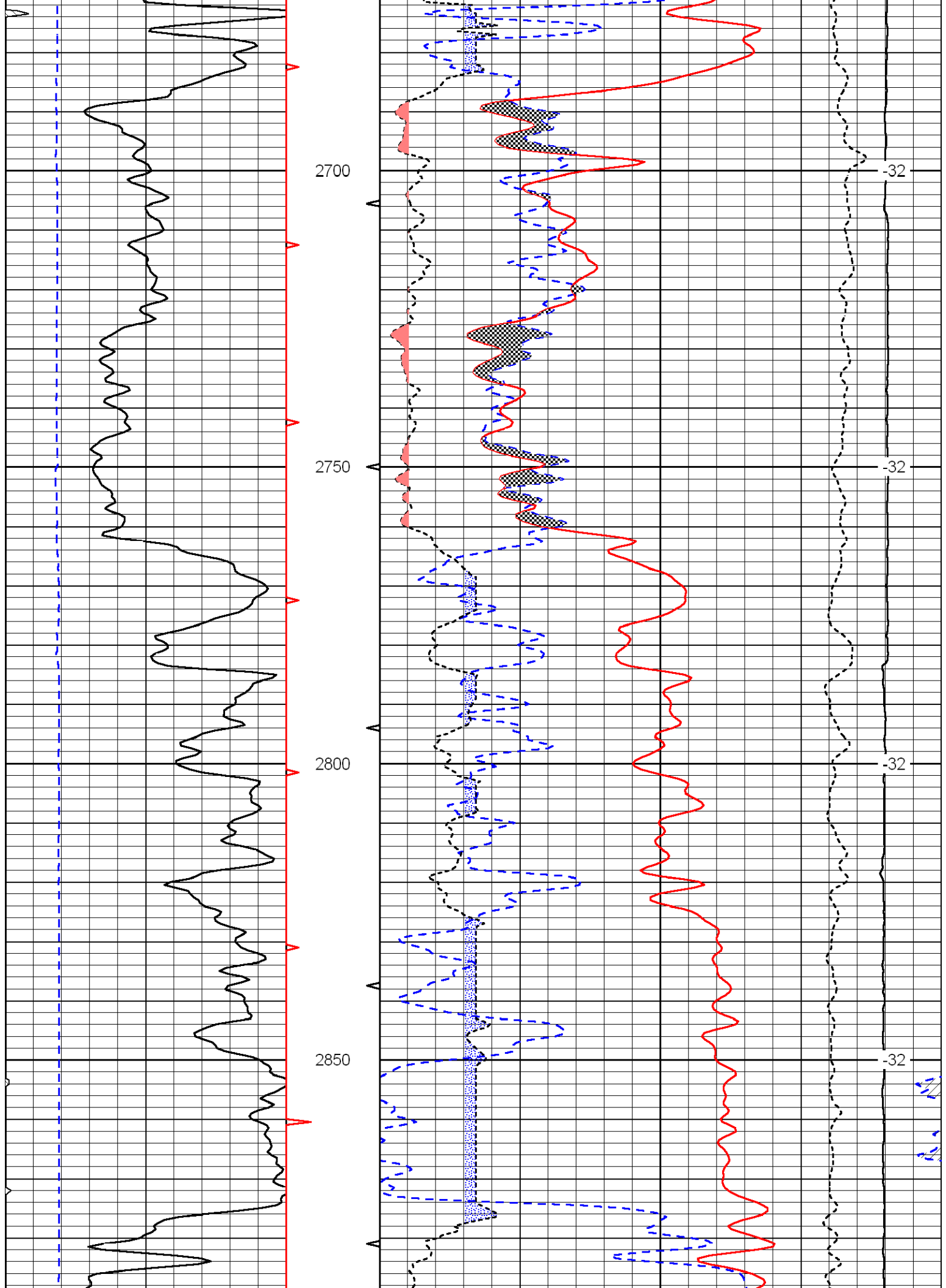
LSPD
(ft/min)

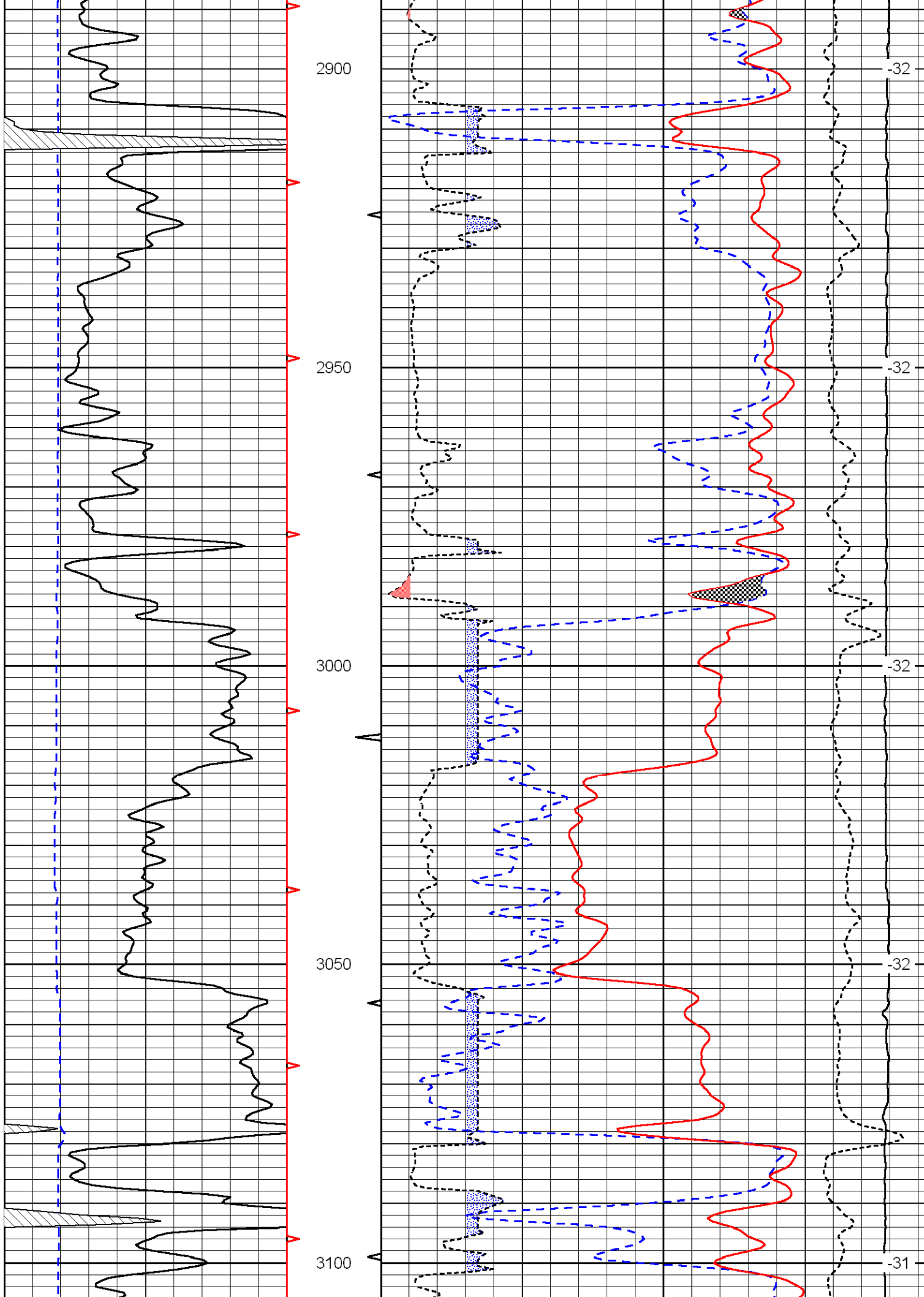


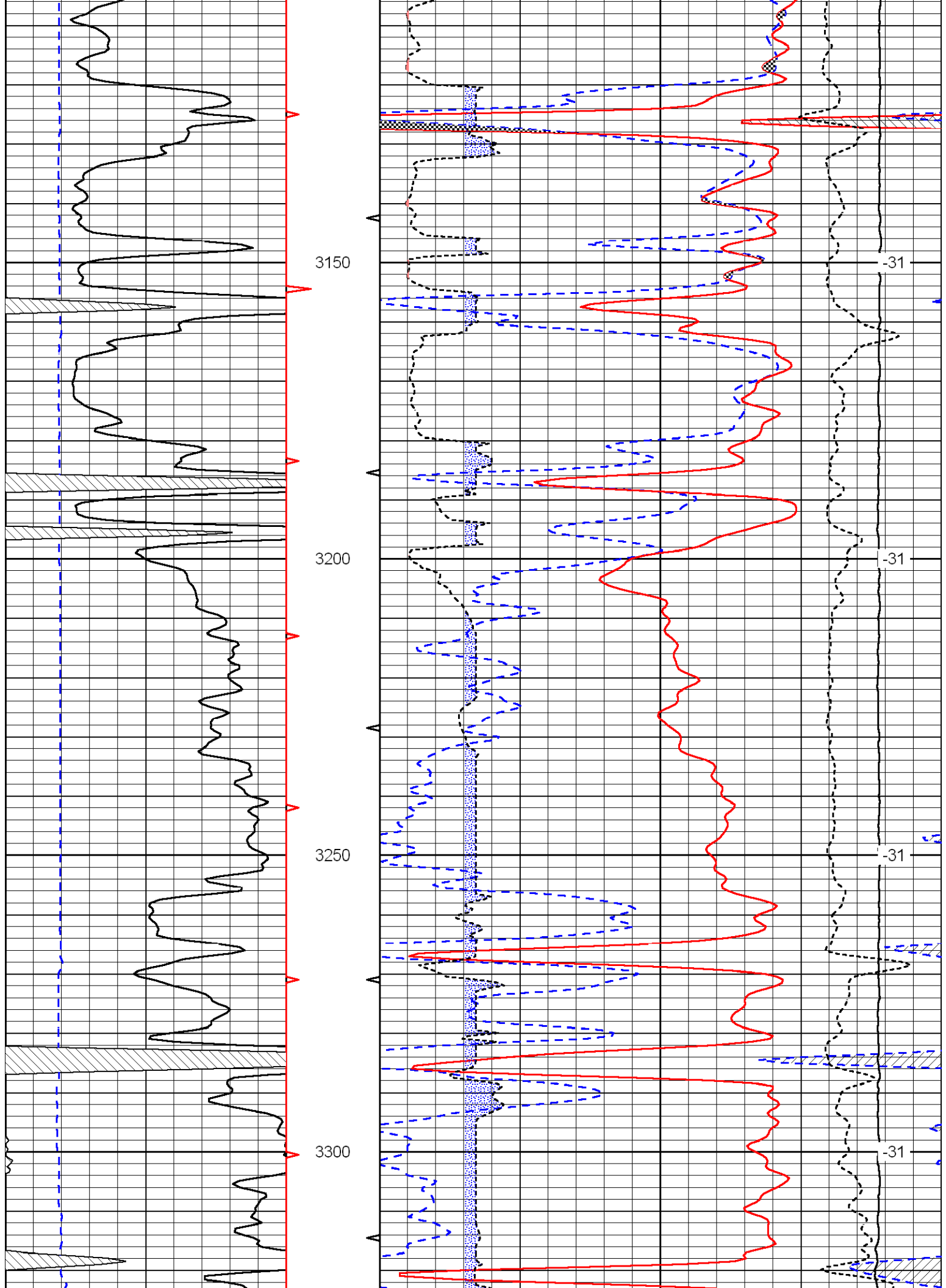


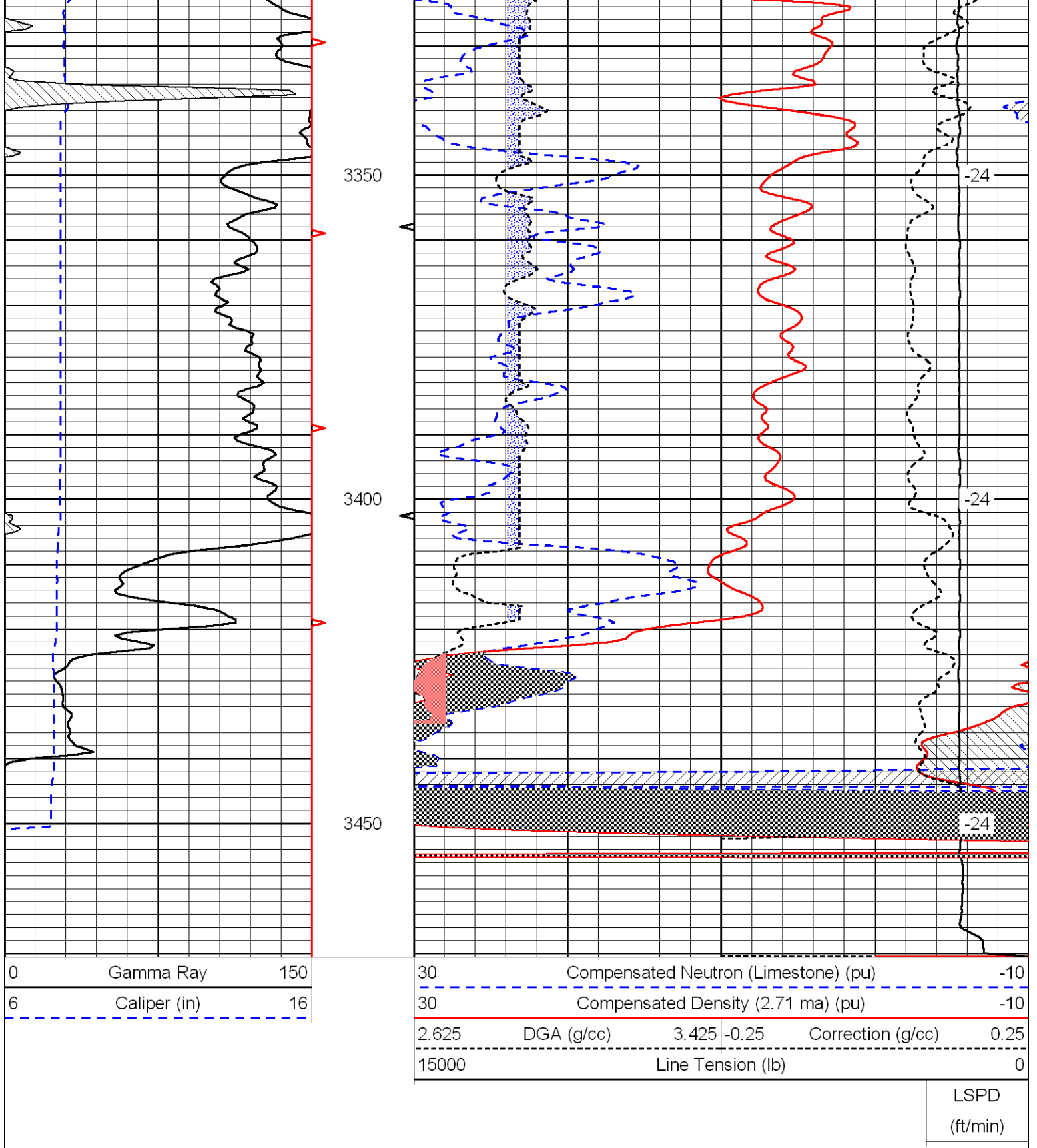












0	Gamma Ray	150
6	Caliper (in)	16

30	Compensated Neutron (Limestone) (pu)			-10	
30	Compensated Density (2.71 ma) (pu)			-10	
2.625	DGA (g/cc)	3.425	-0.25	Correction (g/cc)	0.25
15000	Line Tension (lb)			0	

LSPD
(ft/min)