



SUPERIOR
Hays,
Kansas

**DUAL INDUCTION
LOG**

Company ETERNITY EXPLORATION, LLC.
Well BH WERTH #1
Field WILDCAT
County GRAHAM
State KANSAS

Company ETERNITY EXPLORATION, LLC.
Well BH WERTH #1
Field WILDCAT
County GRAHAM State KANSAS

Location: API #: 15-065-23626-0000
950' FSL & 2095' FWL
SEC 30 TWP 9S RGE 25W
Permanent Datum GROUND LEVEL Elevation 2599
Log Measured From KELLY BUSHING 5' A.G.L.
Drilling Measured From KELLY BUSHING
Other Services
CDL/CNL
MEL
Elevation
K.B. 2604
D.F. 2602
G.L. 2599

Date	3/23/10
Run Number	ONE
Depth Driller	4375
Depth Logger	4377
Bottom Logged Interval	4375
Top Log Interval	00
Casing Driller	8 5/8"@237'
Casing Logger	234
Bit Size	7 7/8"
Type Fluid In Hole	CHEMICAL MUD
Density / Viscosity	9.2172
pH / Fluid Loss	11.0/6.4
Source of Sample	FLOWLINE
Rm @ Meas. Temp	.950@80F
Rmf @ Meas. Temp	.713@80F
Rmc @ Meas. Temp	1.14@80F
Source of Rmf / Rmc	MEASUREMENT
Rm @ BHT	.639@119F
Time Circulation Stopped	2.5 HOURS
Time Logger on Bottom	12:00 A.M.
Maximum Recorded Temperature	119F
Equipment Number	0836
Location	HAYS, KANSAS
Recorded By	JEFF LUEBBERS
Witnessed By	SCOTT ALBERG
	CARLO UGOLINI

<<< Fold Here >>>

All interpretations are opinions based on inferences from electrical or other measurements and we cannot and do not guarantee the accuracy or correctness of any interpretation, and we shall not, except in the case of gross or willful negligence on our part, be liable or responsible for any loss, costs, damages, or expenses incurred or sustained by anyone resulting from any interpretation made by any of our officers, agents or employees. These interpretations are also subject to our general terms and conditions set out in our current Price Schedule.

Comments

THANK YOU FOR USING SUPERIOR WELL SERVICE HAYS, KANSAS (785) 628-6395
DIRECTIONS
ST. PETER, KS., 3N. ON (140TH AVE.) TO "RD. H", 3 1/2W., N. INTO



SUPERIOR
Hays,
Kansas

MAIN SECTION

Database File: 004836ddn.db
 Dataset Pathname: pass3.8
 Presentation Format: dil2
 Dataset Creation: Wed Mar 24 01:47:10 2010 by Calc Open-Cased 060407
 Charted by: Depth in Feet scaled 1:600

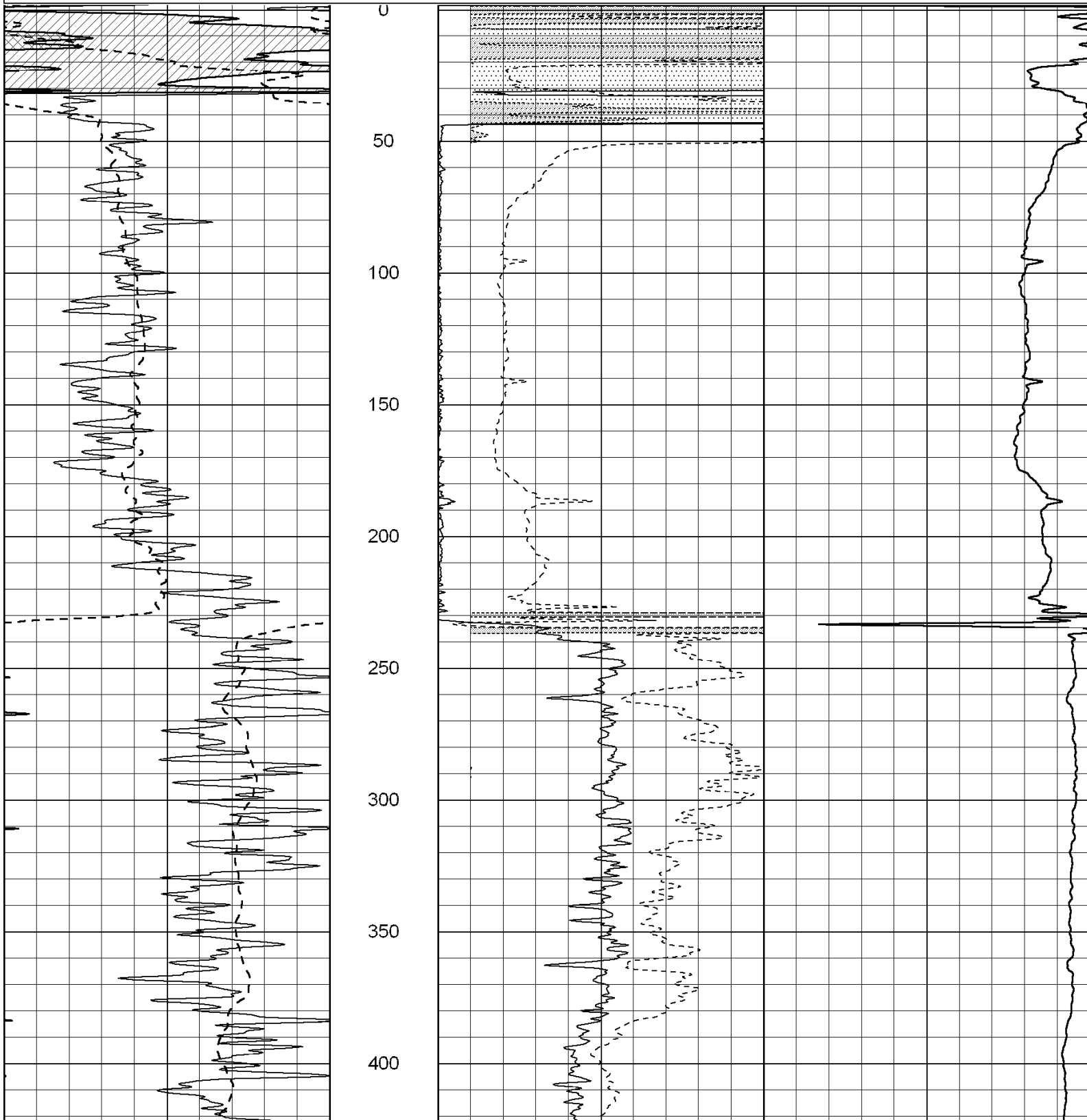
0 Gamma Ray (GAPI) 150
 -100 SP (mV) 100

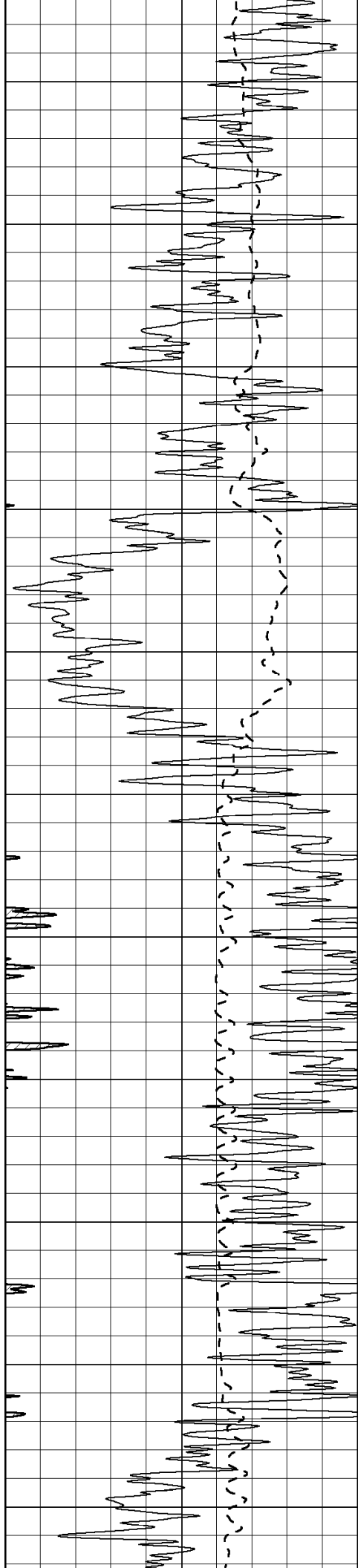
0 RLL3 (Ohm-m) 50
 0 RILD (Ohm-m) 50

1000 CILD (mmho-m) 0

50 RILD X10 (Ohm-m) 500

50 RLL3 X10 (Ohm-m) 500





450

500

550

600

650

700

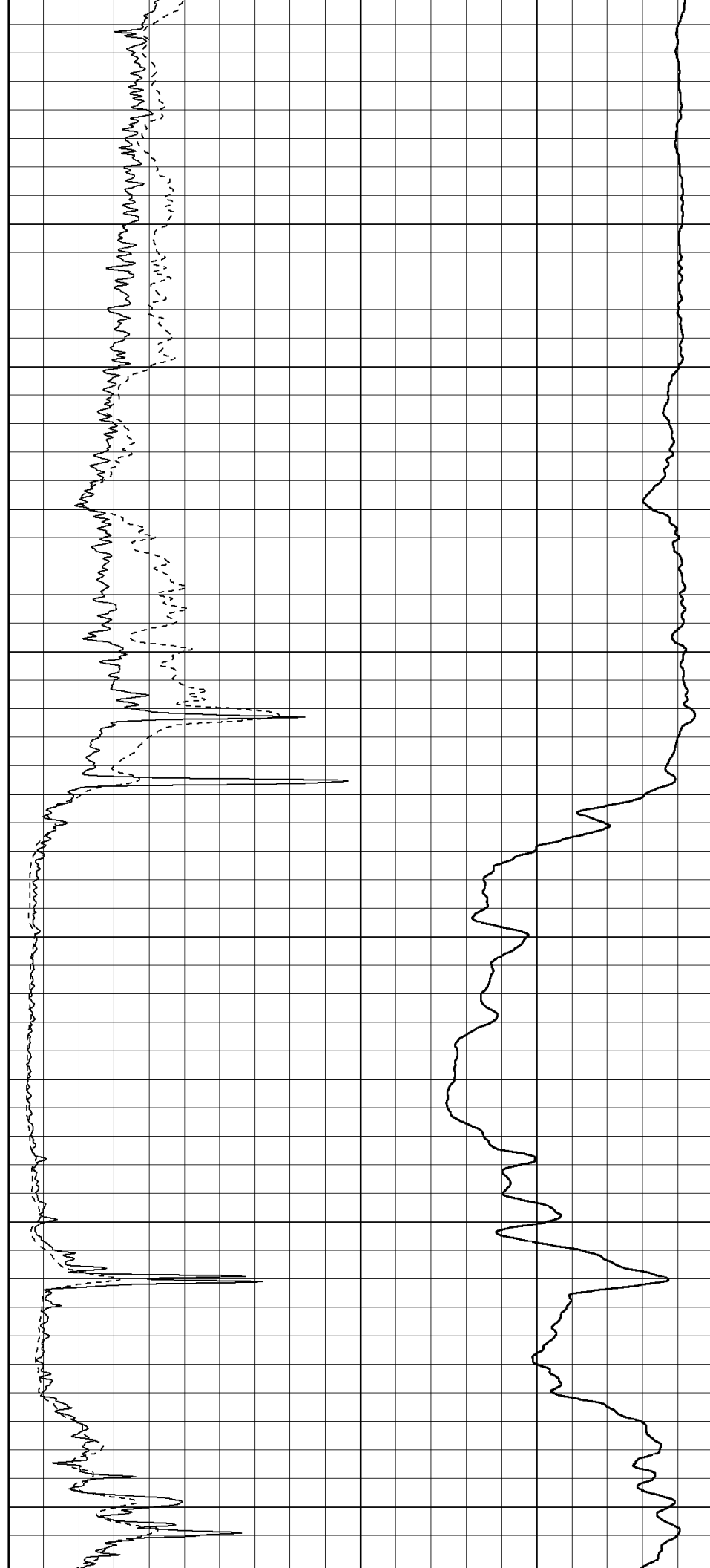
750

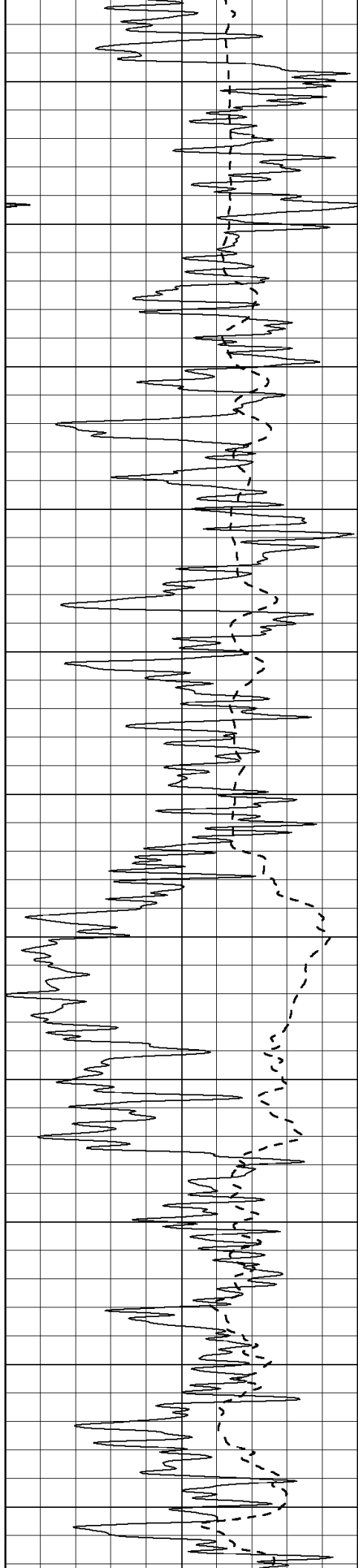
800

850

900

950





1000

1050

1100

1150

1200

1250

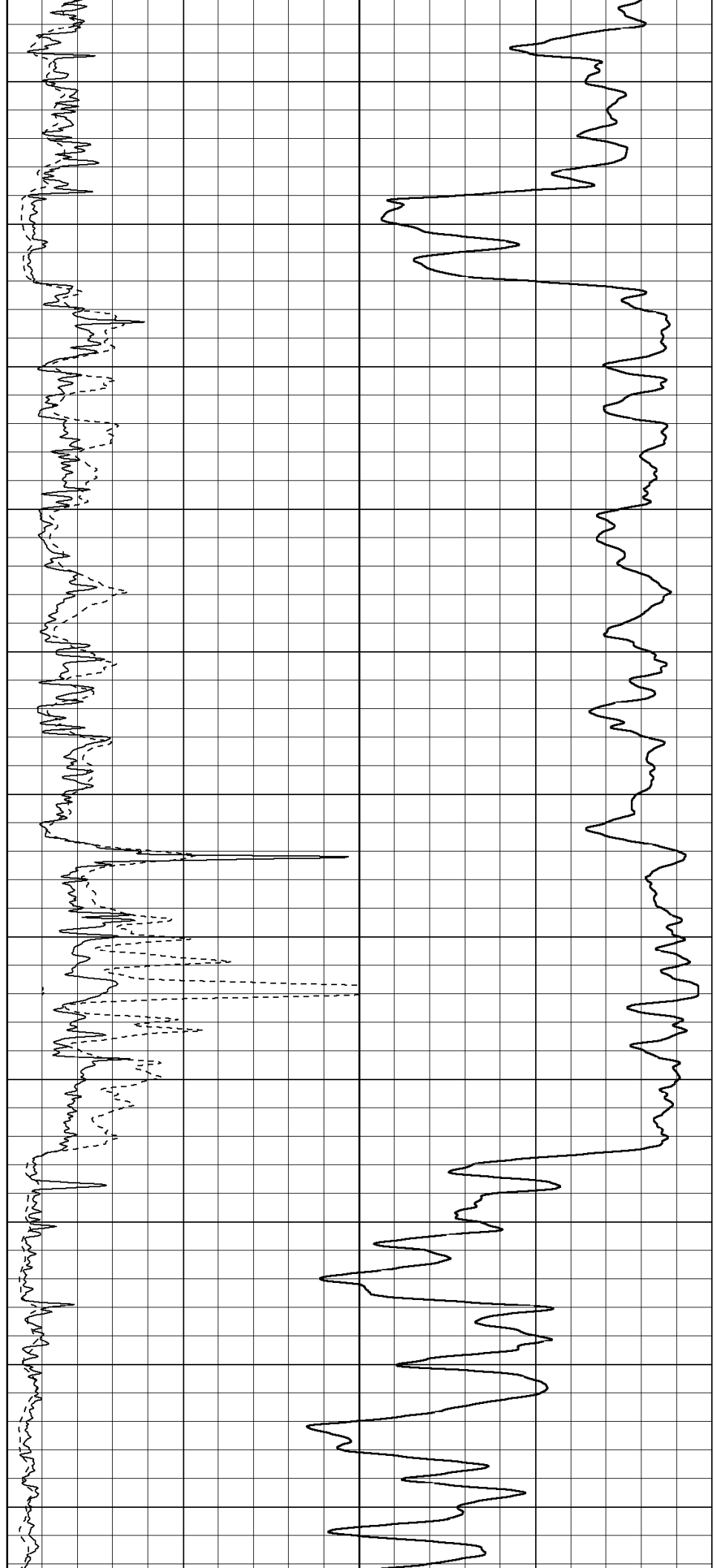
1300

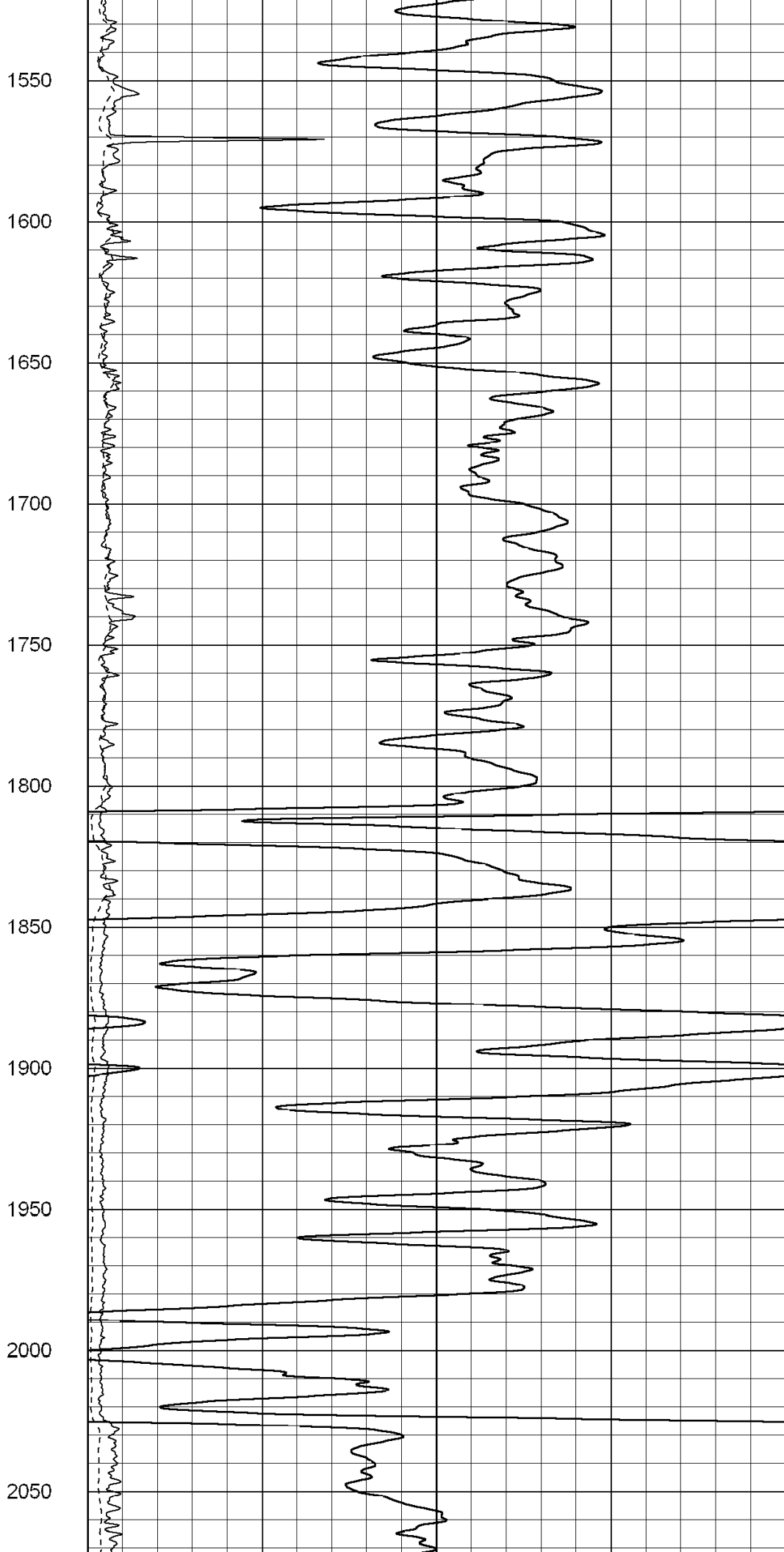
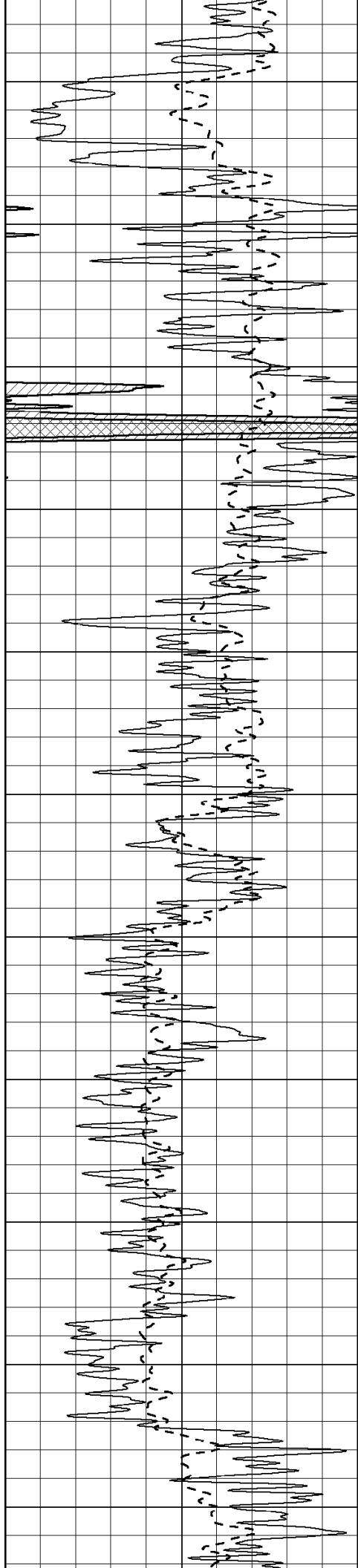
1350

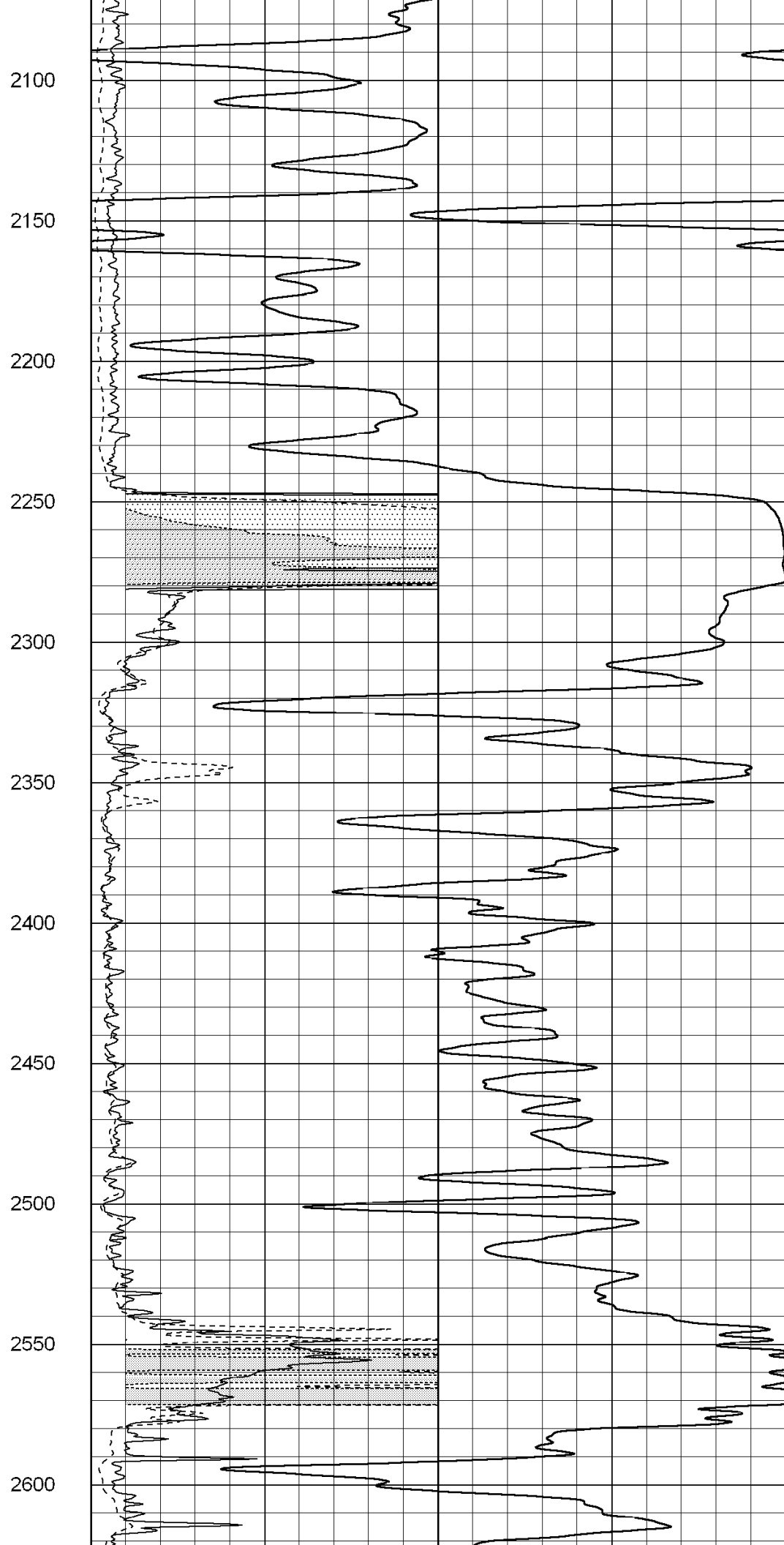
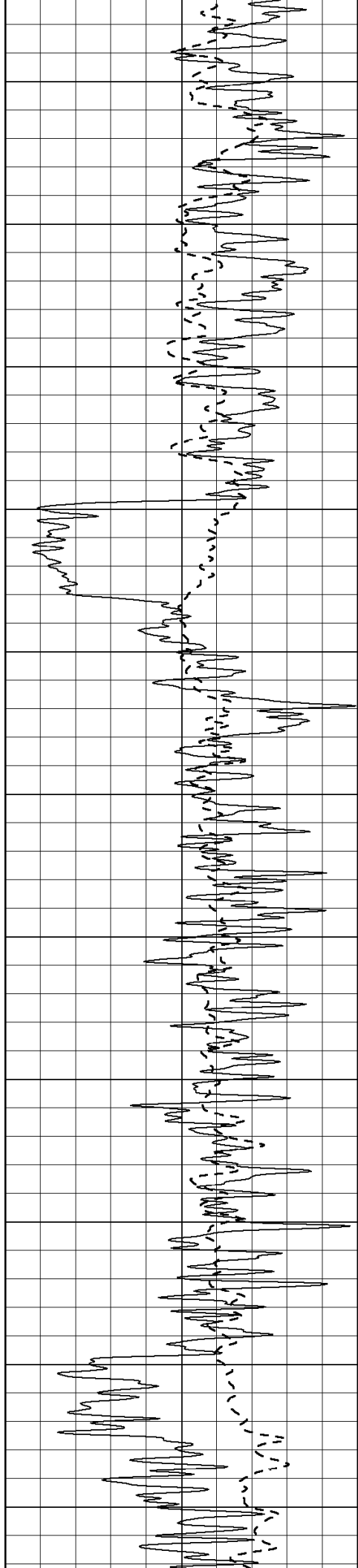
1400

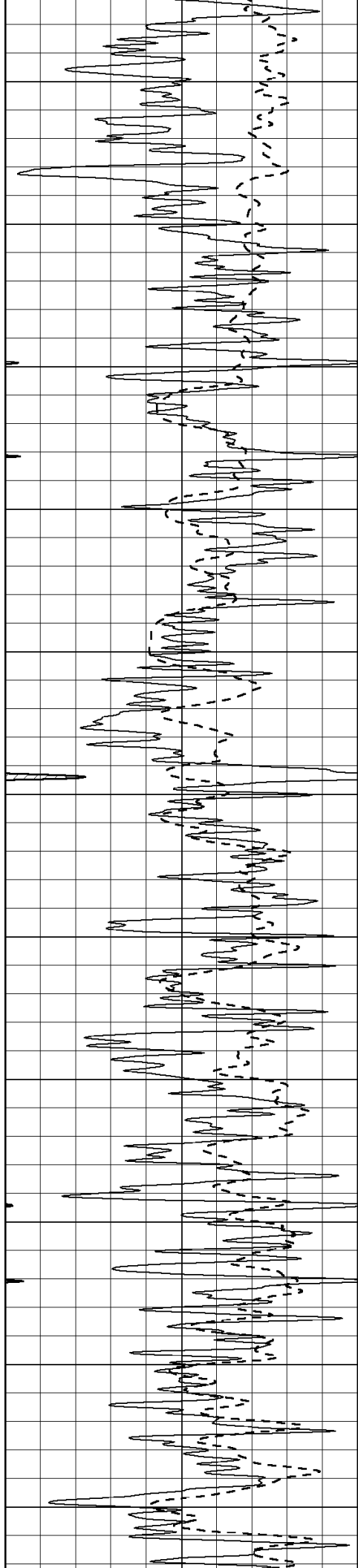
1450

1500









2650

2700

2750

2800

2850

2900

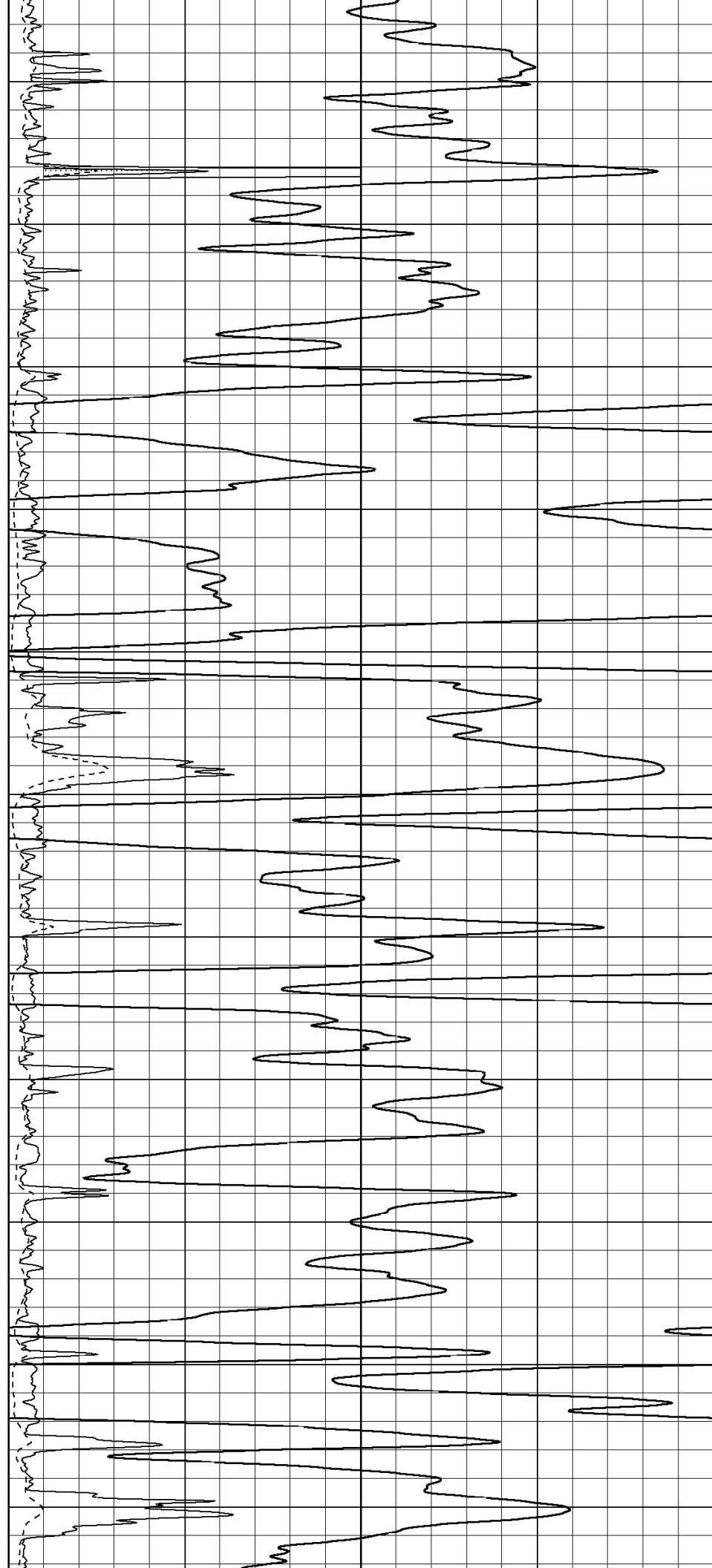
2950

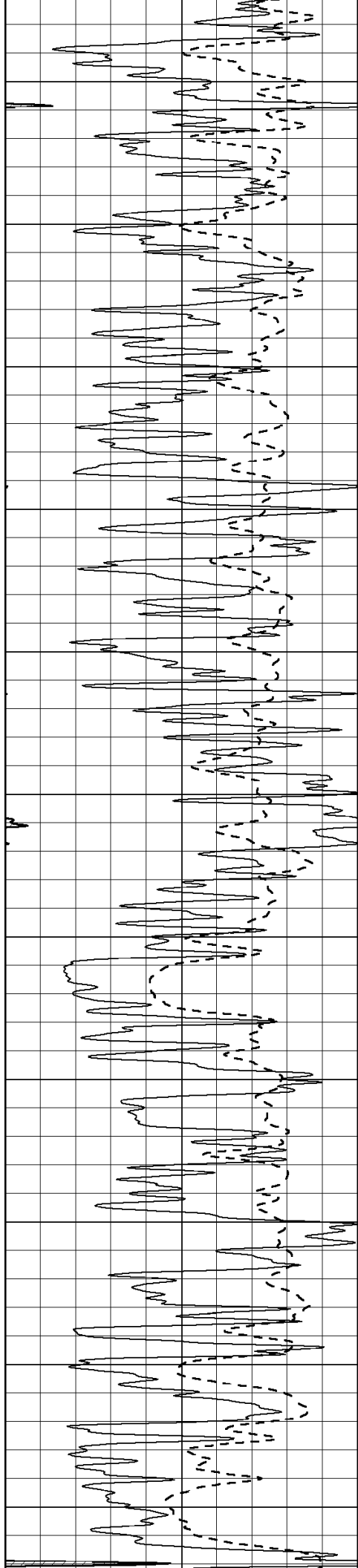
3000

3050

3100

3150





3200

3250

3300

3350

3400

3450

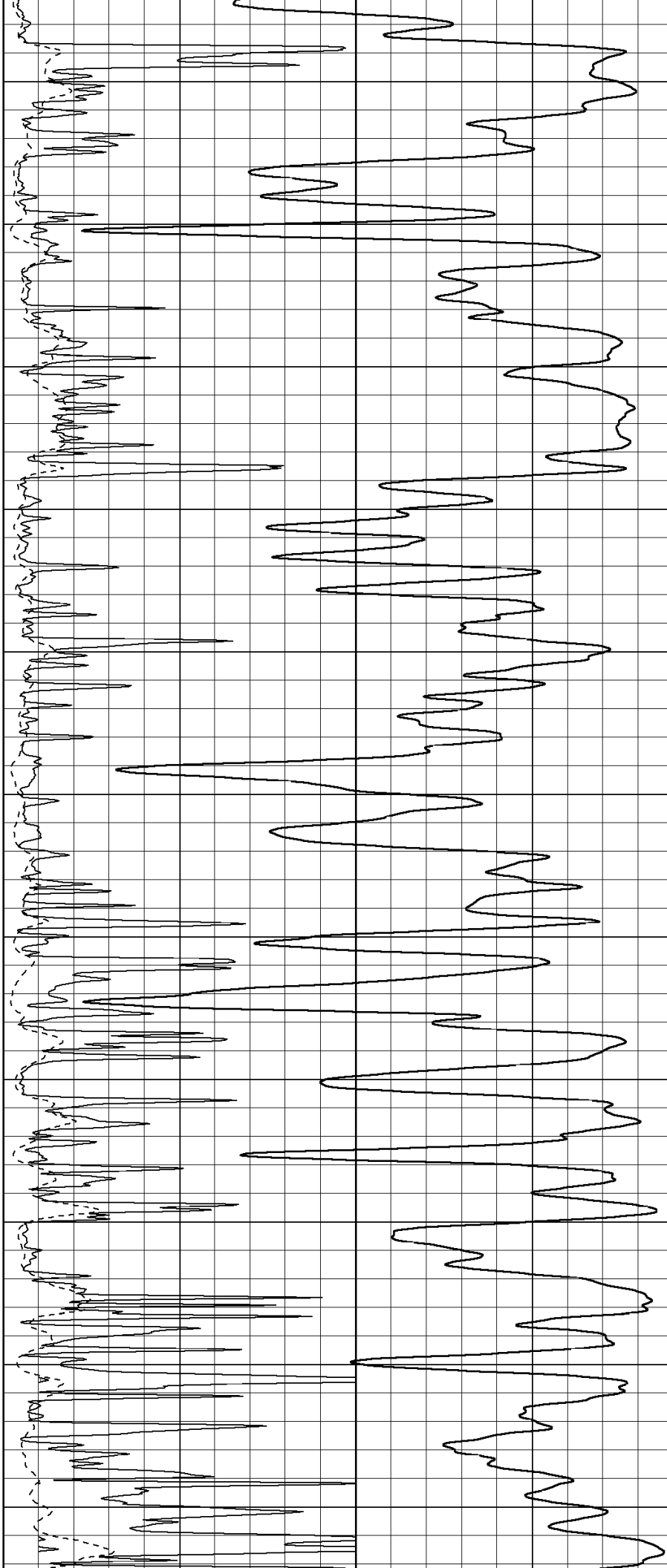
3500

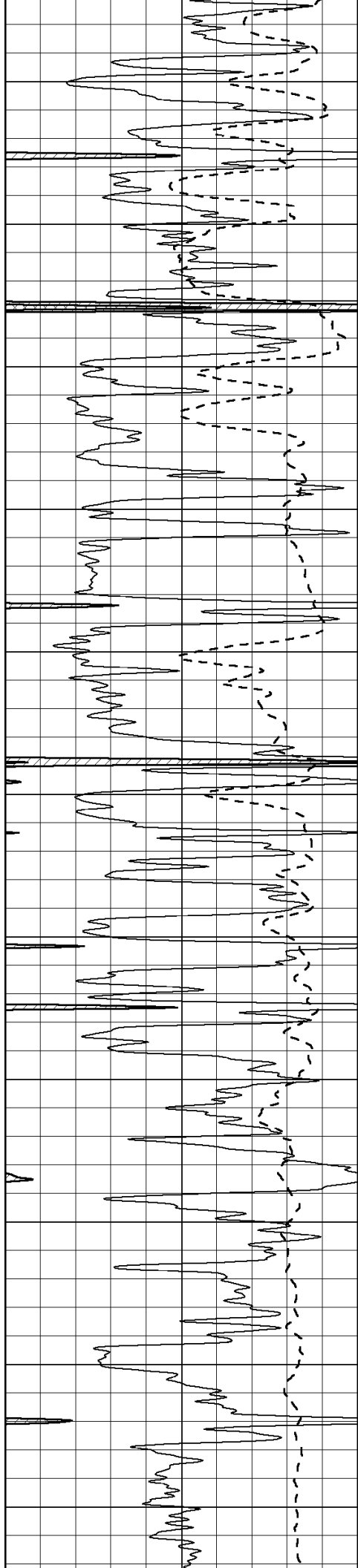
3550

3600

3650

3700





3750

3800

3850

3900

3950

4000

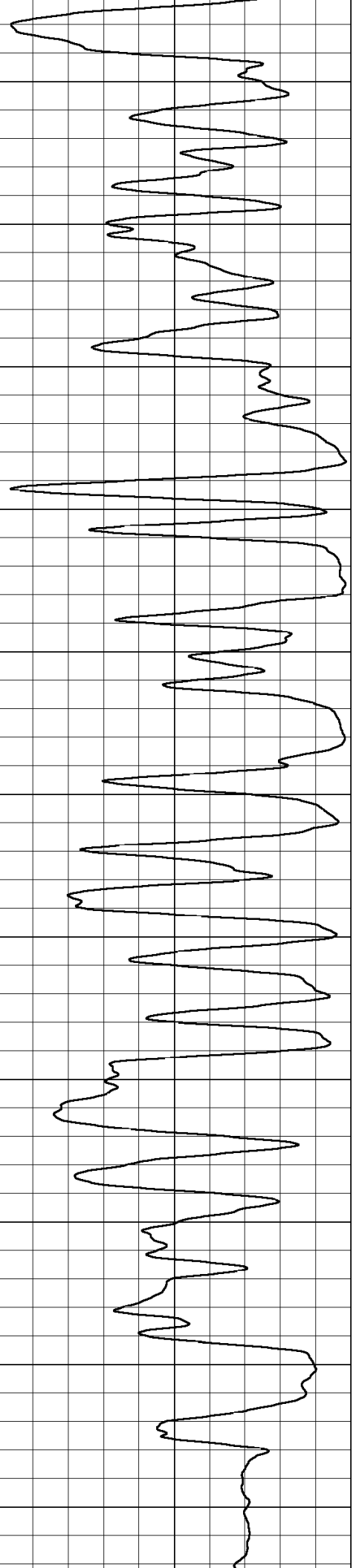
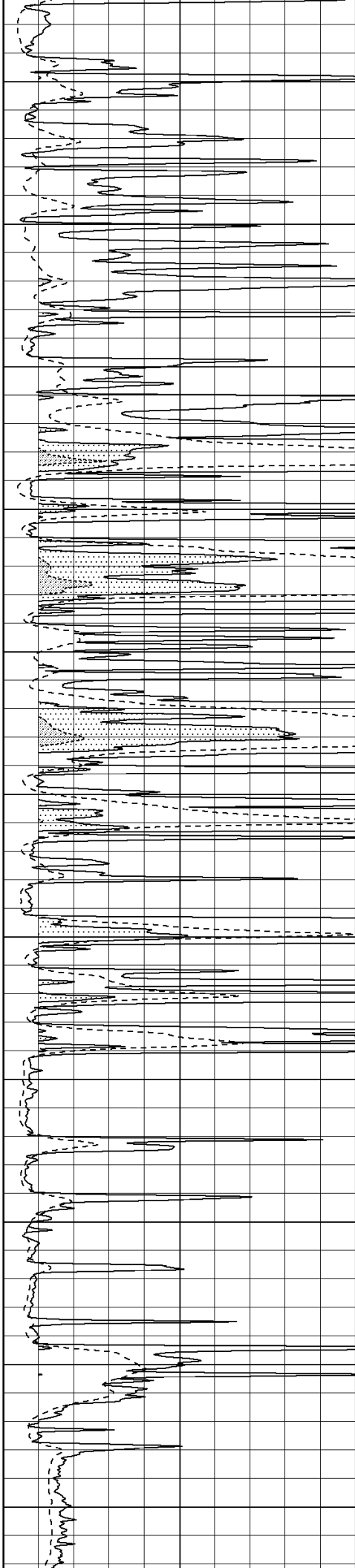
4050

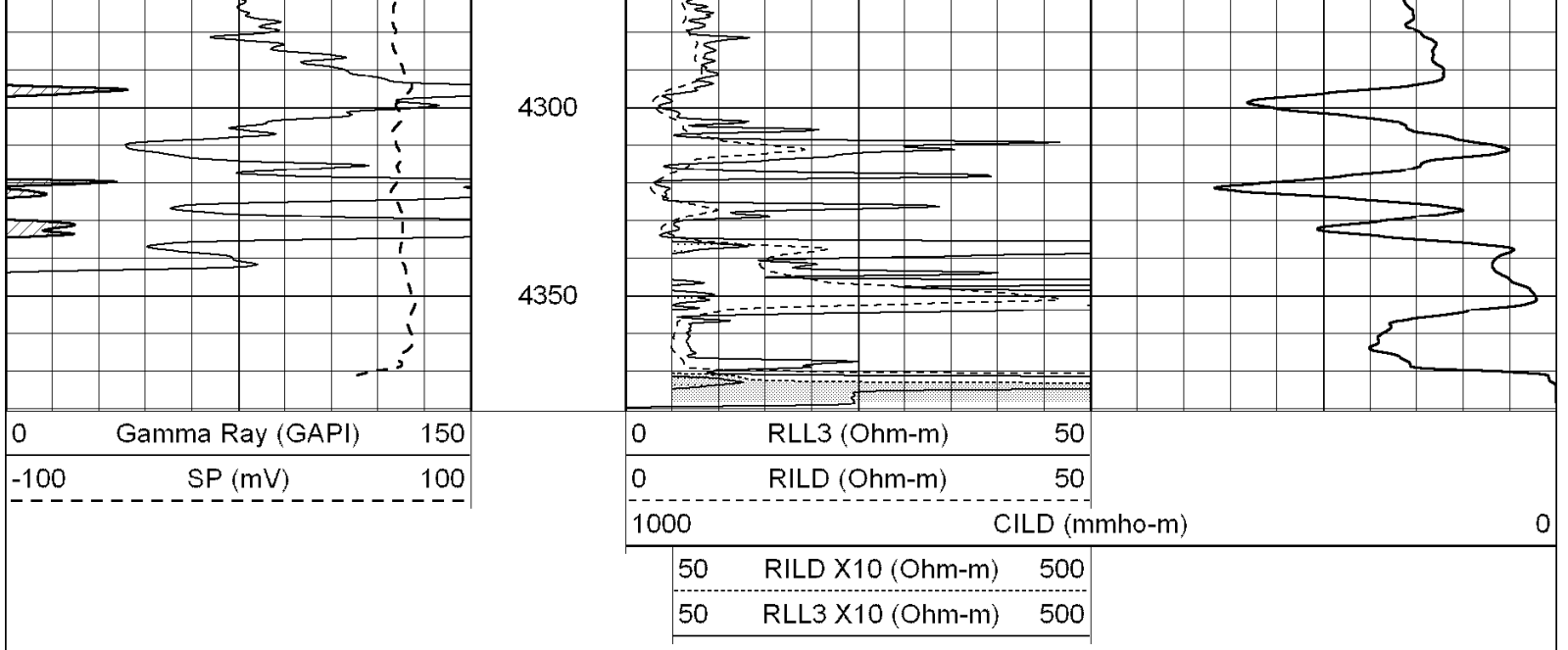
4100

4150

4200

4250



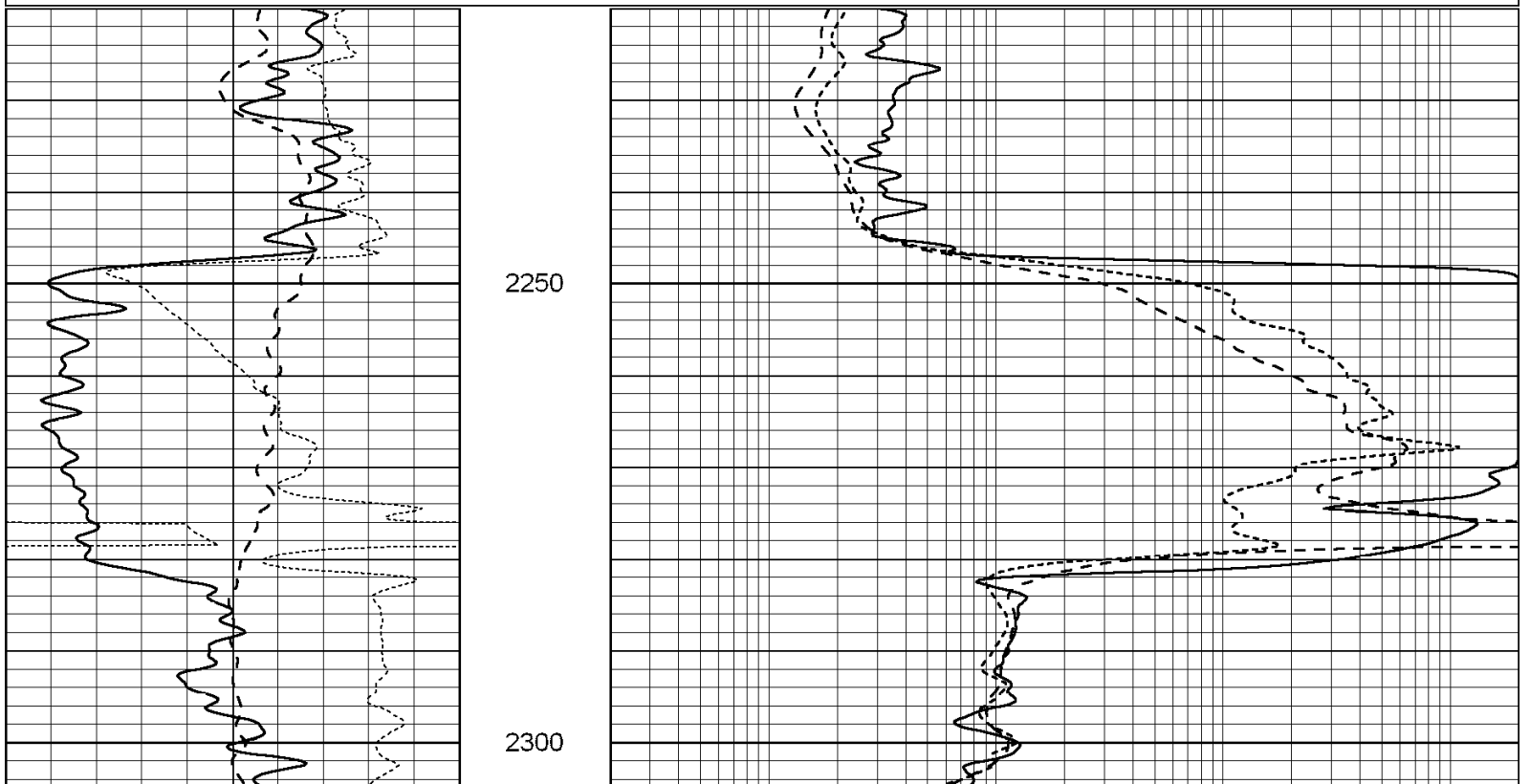


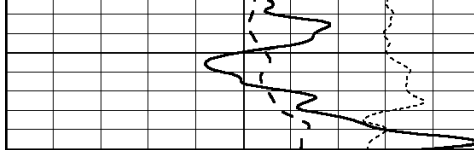
SUPERIOR
Hays,
Kansas

ANHYDRITE

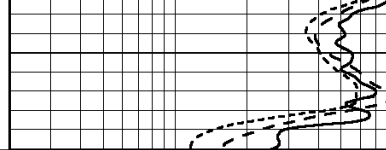
Database File: 004836ddn.db
 Dataset Pathname: pass3.9
 Presentation Format: dil
 Dataset Creation: Wed Mar 24 01:47:27 2010 by Calc Open-Cased 060407
 Charted by: Depth in Feet scaled 1:240

0	GAMMA RAY (GAPI)	150	0.2	SHALLOW GUARD (Ohm-m)	2000
-100	SP (mV)	100	0.2	DEEP INDUCTION (Ohm-m)	2000
-250	Rxo/Rt	50	0.2	MEDIUM INDUCTION (Ohm-m)	2000





0	GAMMA RAY (GAPI)	150
-100	SP (mV)	100
-250	Rxo/Rt	50



0.2	SHALLOW GUARD (Ohm-m)	2000
0.2	DEEP INDUCTION (Ohm-m)	2000
0.2	MEDIUM INDUCTION (Ohm-m)	2000



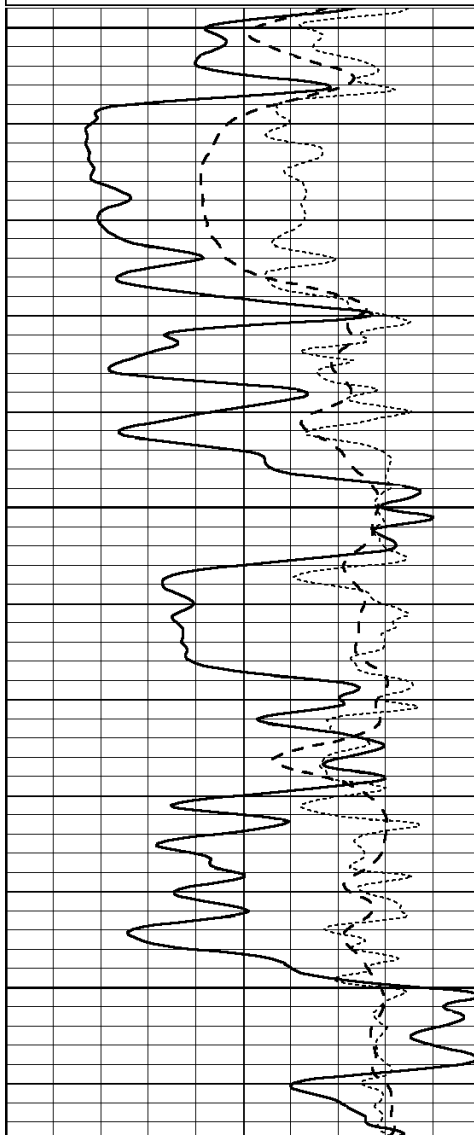
SUPERIOR
Hays,
Kansas

MAIN SECTION

Database File: 004836ddn.db
 Dataset Pathname: pass3.8
 Presentation Format: dil
 Dataset Creation: Wed Mar 24 01:47:10 2010 by Calc Open-Cased 060407
 Charted by: Depth in Feet scaled 1:240

0	GAMMA RAY (GAPI)	150
-100	SP (mV)	100
-250	Rxo/Rt	50

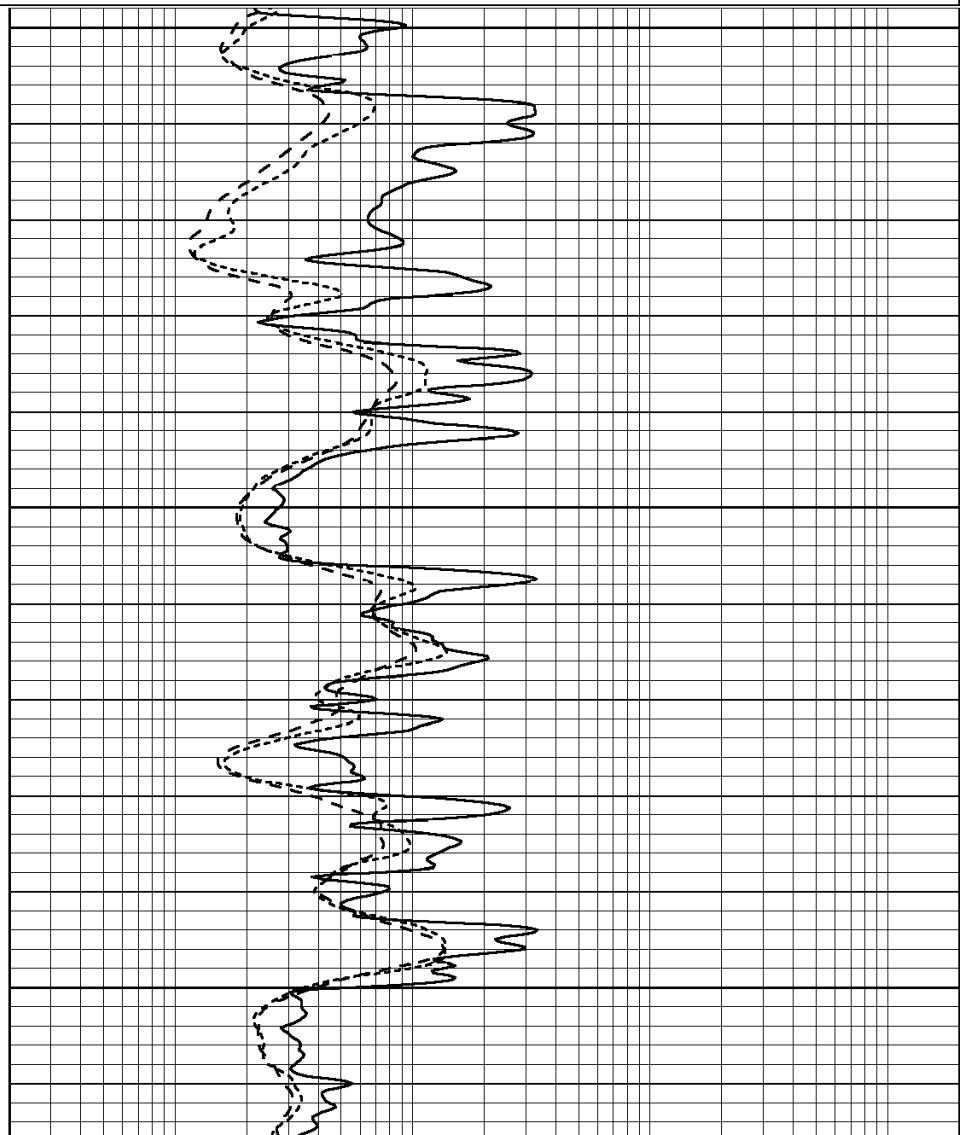
0.2	SHALLOW GUARD (Ohm-m)	2000
0.2	DEEP INDUCTION (Ohm-m)	2000
0.2	MEDIUM INDUCTION (Ohm-m)	2000

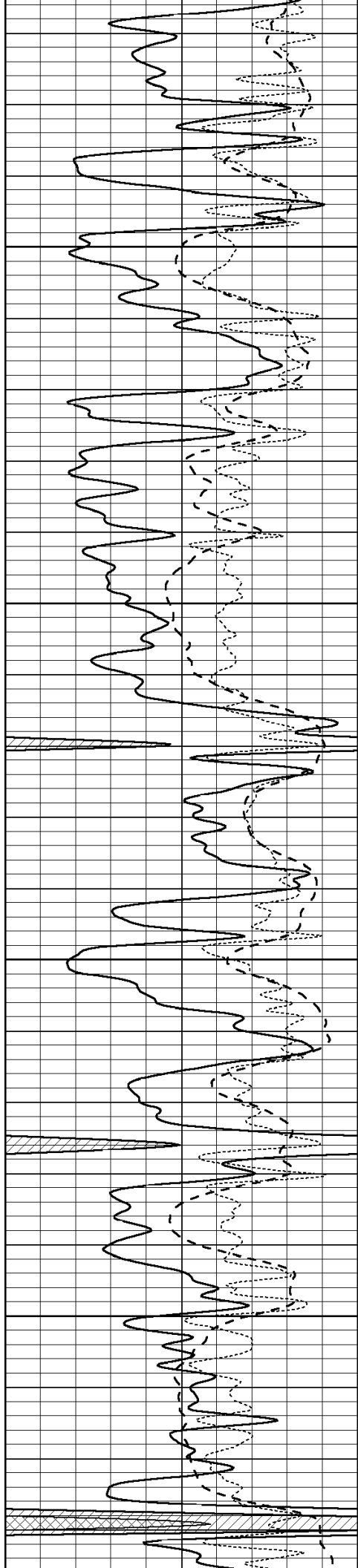


3500

3550

3600



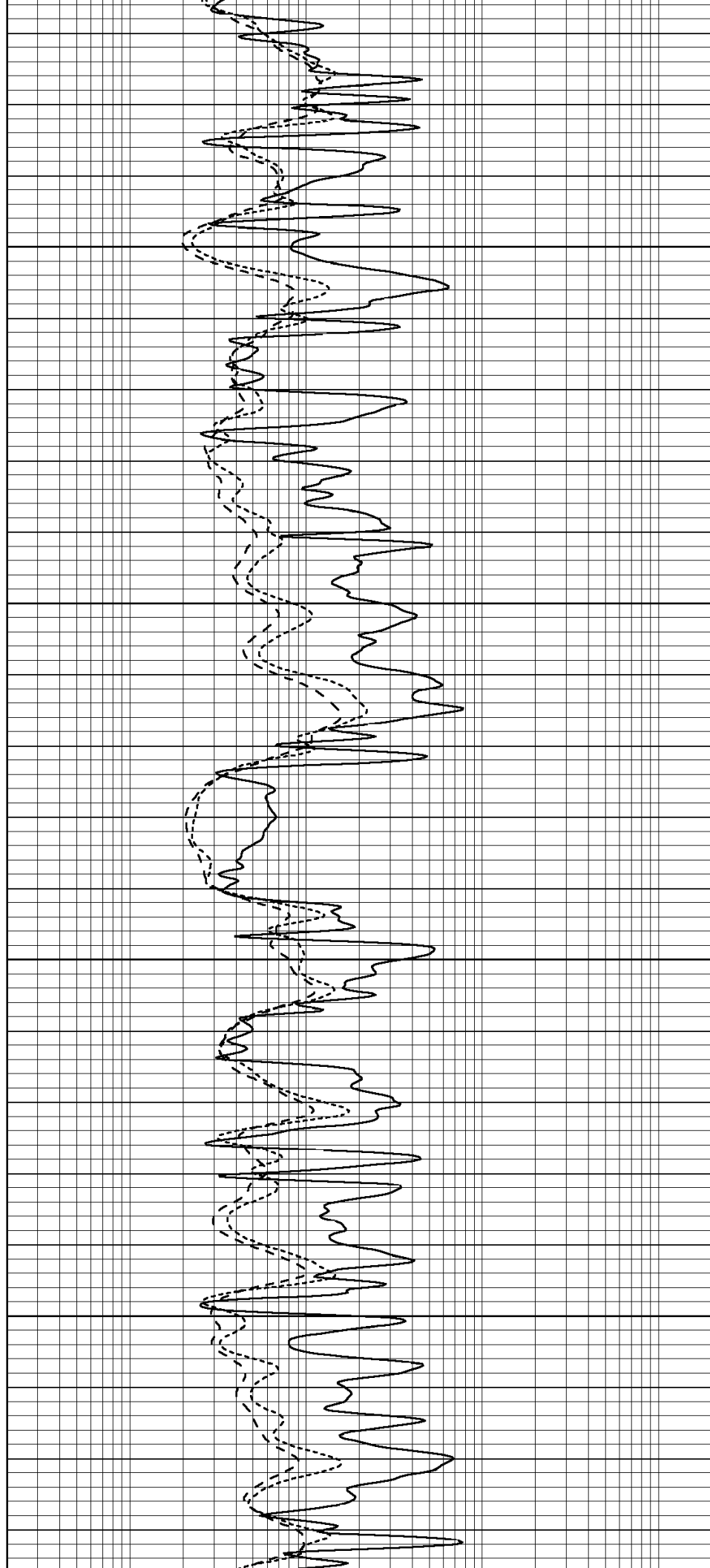


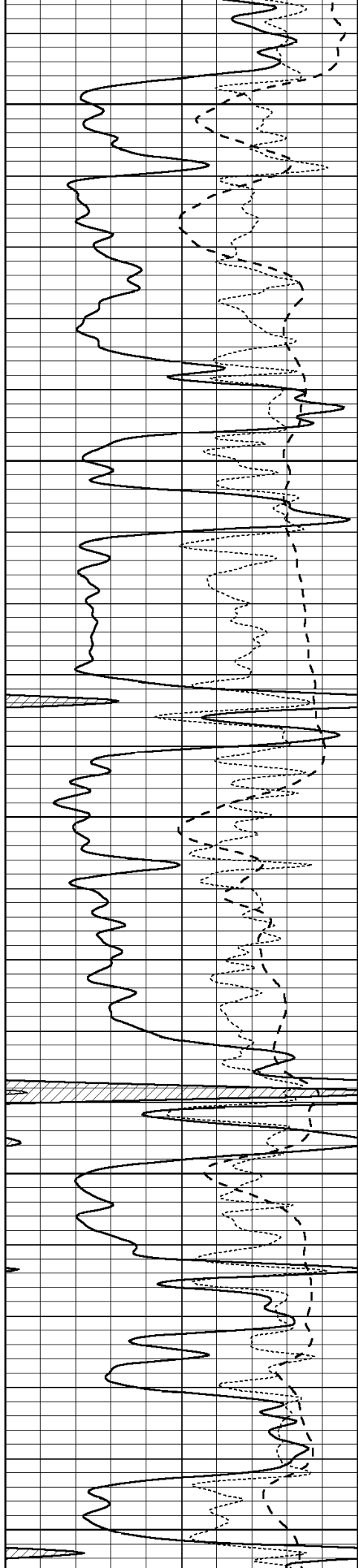
3650

3700

3750

3800





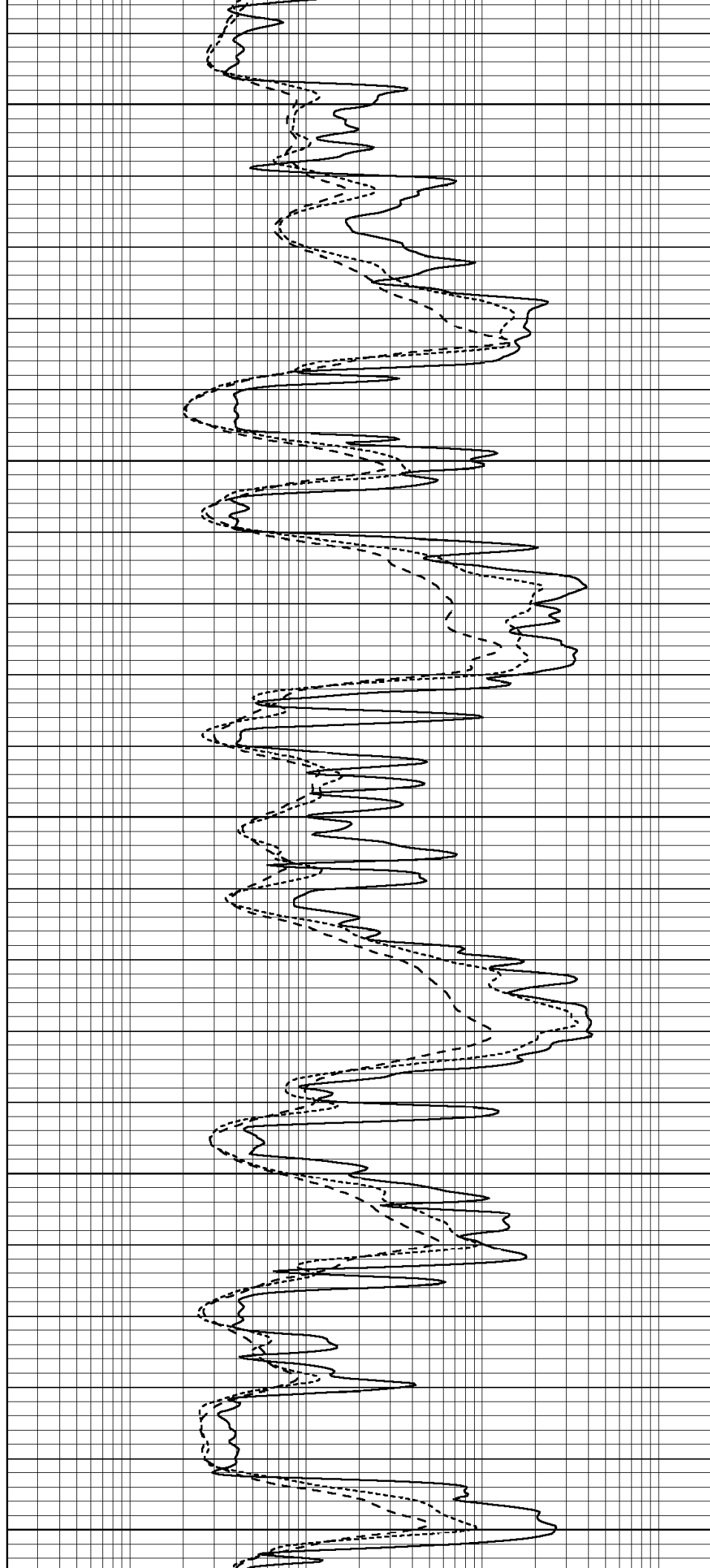
3850

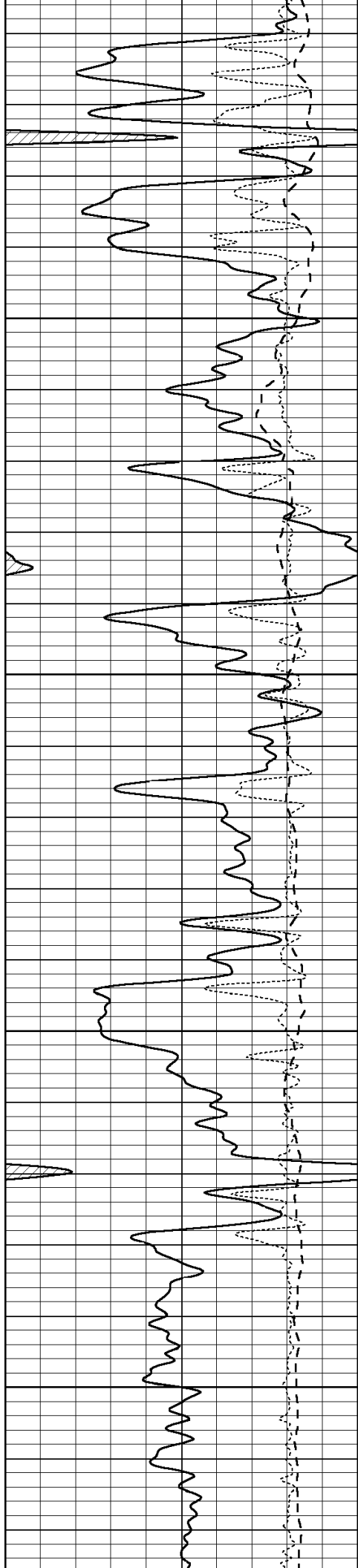
3900

3950

4000

4050



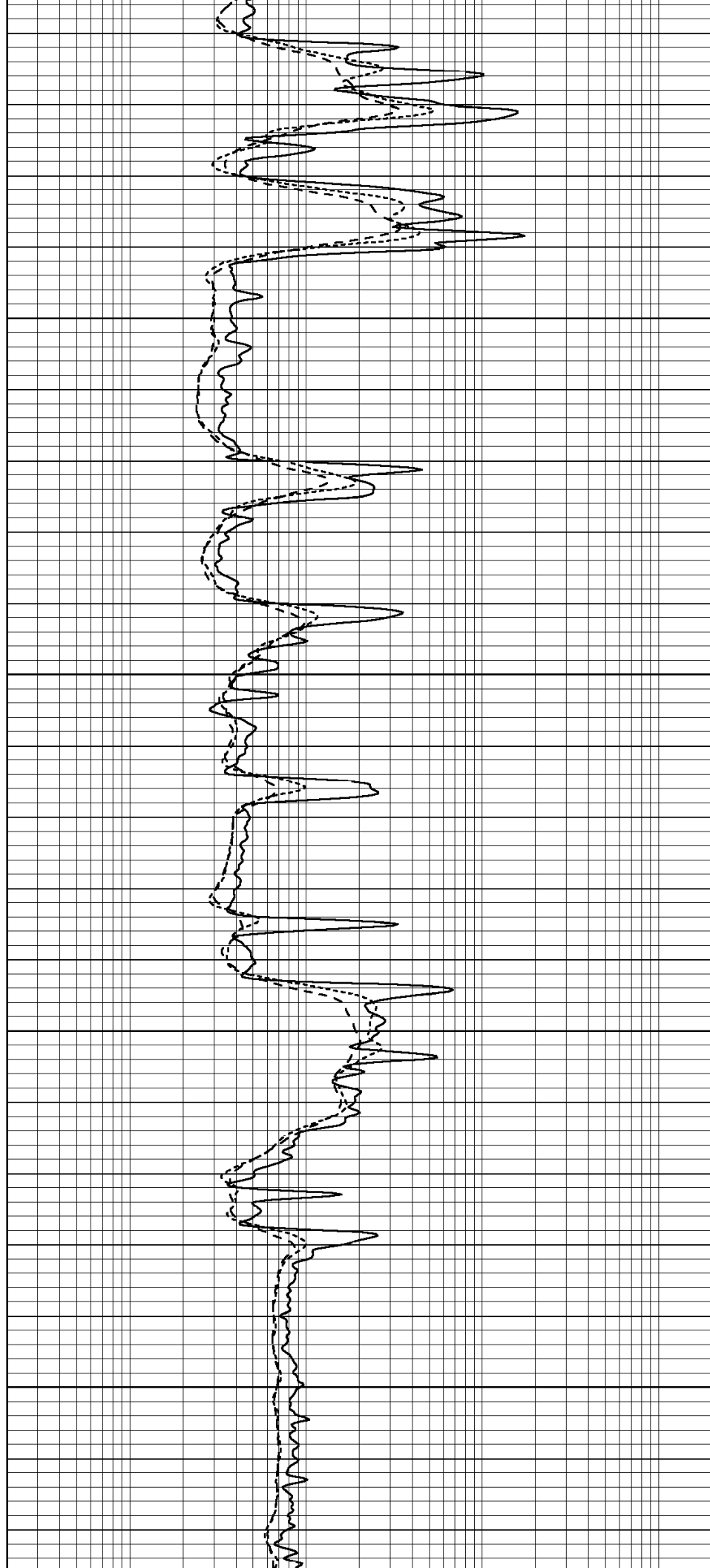


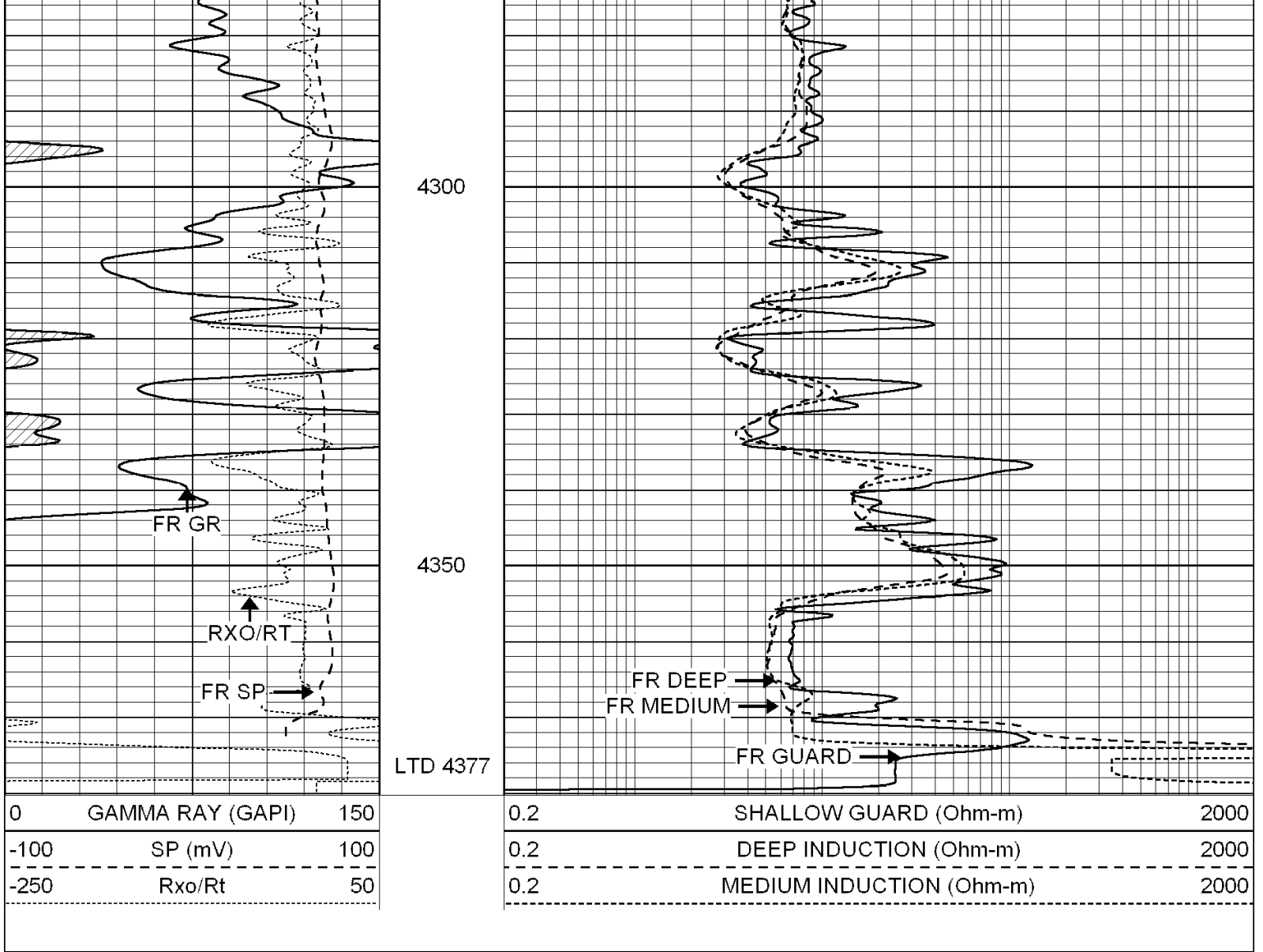
4100

4150

4200

4250

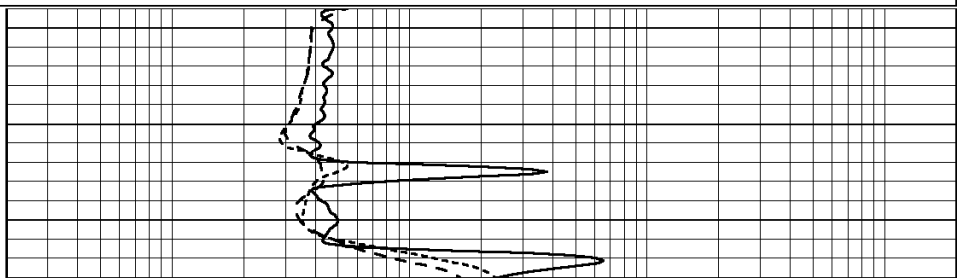
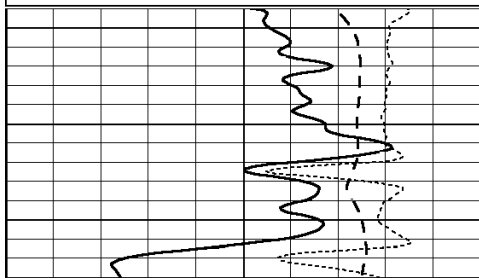
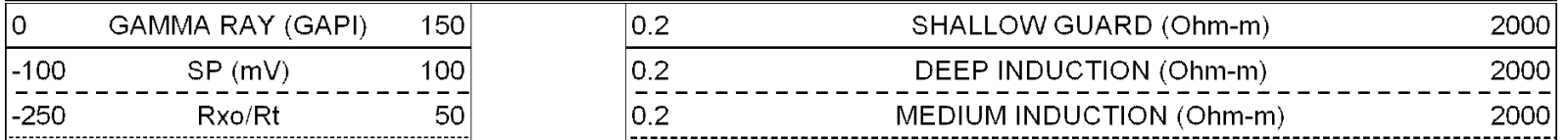


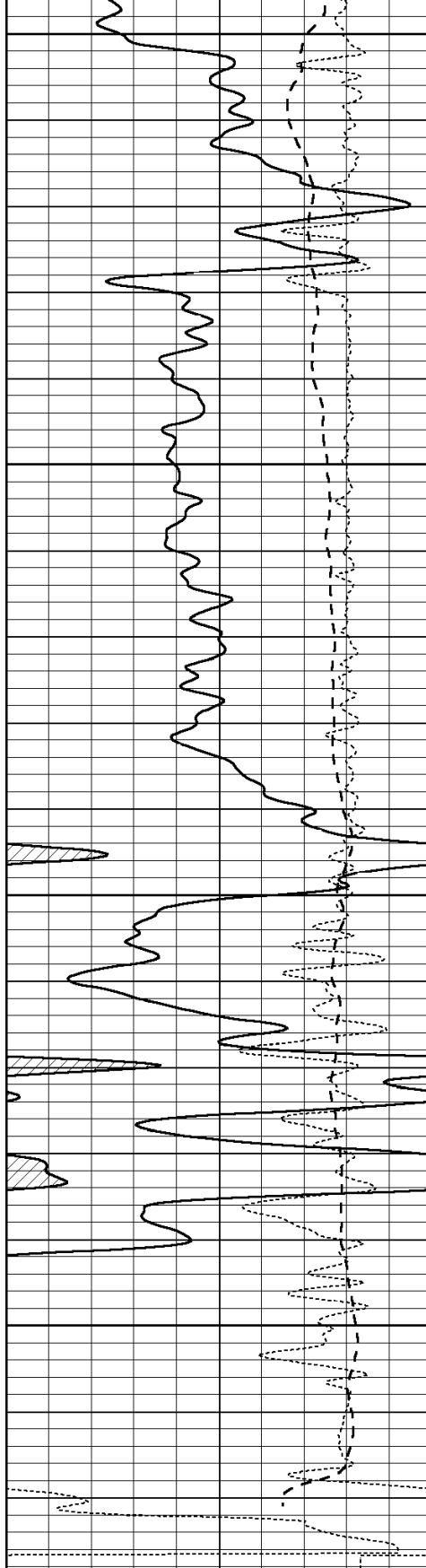


SUPERIOR
Hays,
Kansas

REPEAT SECTION

Database File: 004836ddn.db
 Dataset Pathname: pass2.7
 Presentation Format: dil
 Dataset Creation: Wed Mar 24 01:12:38 2010 by Calc Open-Cased 060407
 Charted by: Depth in Feet scaled 1:240





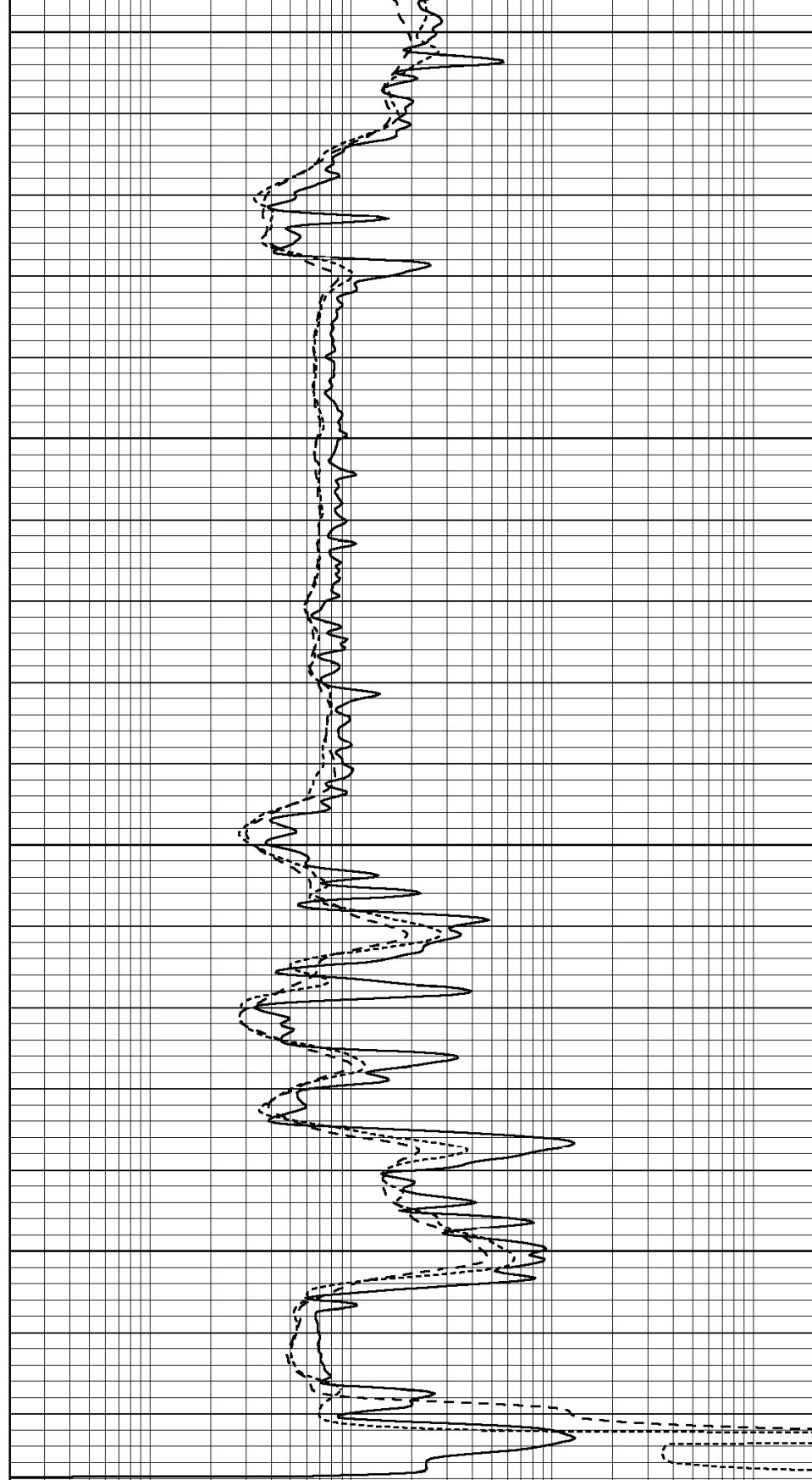
4200

4250

4300

4350

0	GAMMA RAY (GAPI)	150
-100	SP (mV)	100
-250	Rxo/Rt	50



0.2	SHALLOW GUARD (Ohm-m)	2000
0.2	DEEP INDUCTION (Ohm-m)	2000
0.2	MEDIUM INDUCTION (Ohm-m)	2000

Calibration Report

Database File: 004836ddn.db
 Dataset Pathname: pass3.8

Dual Induction Calibration Report

Serial-Model: DIL3-GEAR
 Performed: Tue Mar 23 22:50:28 2010

Loop:	Readings			References			Results	
	Air	Loop		Air	Loop		m	b
Deep	0.011	0.656	V	0.000	400.000	mmho-m	640.000	0.000
Medium	0.013	0.740	V	0.000	462.500	mmho-m	700.000	-13.000
Internal:	Zero	Cal		Zero	Cal		m	b
Deep	0.002	0.645	V	0.000	400.000	mmho-m	622.059	-1.071
Medium	0.007	0.740	V	0.000	462.500	mmho-m	631.393	-4.555

Litho Density Calibration Report
 Serial: 003N Model: PRB
 Performed Tue Sep 08 14:14:44 2009

Litho Density Calibration

	Background	Magnesium	Aluminum	Sandstone	
Window 1	2042.6	12312.8	4225.8	13758.4	cps
Window 2	1855.8	10134.7	3624.2	11113.1	cps
Window 3	1639.4	6760.2	2716.3	7260.3	cps
Window 4	466.4	469.2	466.1	476.5	cps
Long Space	0.0	8278.9	1768.4	9257.4	cps
Short Space	2.2	2377.3	1544.1	2574.2	cps
Rho		1.7100	2.5900	1.3800	g/cc
Pe			2.5700	1.5500	
Rib Angle	: 44.4	Rib Slope	: 0.979	Density/Spine Ratio	: 0.549
Spine Angle	: 74.4	Spine Slope	: 3.577	Spine Intercept	: -18.8

Caliper

	Readings	Reference	
Low Ref	2.2	6.8	
High Ref	4.6	14.0	
	Gain: 3.0		Offset: 0.4

Compensated Neutron Calibration Report

Serial Number: NEU_3I
 Tool Model: G

CALIBRATION

Detector	Readings	Target	Normalization
Short Space	997.00 cps	1000.00 cps	1.0000
Long Space	986.00 cps	1000.00 cps	1.0000

Gamma Ray Calibration Report

Serial Number: GR3
 Tool Model: OPEN
 Performed: Wed Mar 24 00:23:01 2010

Calibrator Value: 200.0 GAPI

Background Reading: 3.0 cps
 Calibrator Reading: 186.0 cps

Sensitivity:

0.8500

GAPI/cps