



**SUPERIOR**  
Hays,  
Kansas

**COMPENSATED  
DENSITY / NEUTRON  
LOG**

Company ETERNITY EXPLORATION, LLC.  
Well BH WERTH #1  
Field WILDCAT  
County GRAHAM  
State KANSAS

Company ETERNITY EXPLORATION, LLC.  
Well BH WERTH #1  
Field WILDCAT  
County GRAHAM State KANSAS

Location: 950' FSL & 2095' FWL  
API #: 15-065-23626-0000  
Other Services DIL/MEL  
SEC 30 TWP 9S RGE 25W  
Permanent Datum GROUND LEVEL Elevation 2599  
Log Measured From KELLY BUSHING 5' A.G.L.  
Drilling Measured From KELLY BUSHING  
Elevation K.B. 2604  
D.F. 2602  
G.L. 2599

Date	3/23/10
Run Number	ONE
Depth Driller	4375
Depth Logger	4377
Bottom Logged Interval	4353
Top Log Interval	3500
Casing Driller	8 5/8"@237'
Casing Logger	234
Bit Size	7 7/8"
Type Fluid In Hole	CHEMICAL MUD
Density / Viscosity	9.2172
pH / Fluid Loss	11.0/6.4
Source of Sample	FLOWLINE
Rm @ Meas. Temp	.950@80F
Rmf @ Meas. Temp	.713@80F
Rmc @ Meas. Temp	1.14@80F
Source of Rmf / Rmc	MEASUREMENT
Rm @ BHT	.639@119F
Time Circulation Stopped	2.5 HOURS
Time Logger on Bottom	12:00 A.M.
Maximum Recorded Temperature	119F
Equipment Number	0836
Location	HAYS, KANSAS
Recorded By	JEFF LUEBBERS
Witnessed By	SCOTT ALBERG
	CARLO UGOLINI

<<< Fold Here >>>

All interpretations are opinions based on inferences from electrical or other measurements and we cannot and do not guarantee the accuracy or correctness of any interpretation, and we shall not, except in the case of gross or willful negligence on our part, be liable or responsible for any loss, costs, damages, or expenses incurred or sustained by anyone resulting from any interpretation made by any of our officers, agents or employees. These interpretations are also subject to our general terms and conditions set out in our current Price Schedule.

**Comments**

THANK YOU FOR USING SUPERIOR WELL SERVICE HAYS, KANSAS (785) 628-6395  
DIRECTIONS  
ST. PETER, KS., 3N. ON (140TH AVE.) TO "RD. H", 3 1/2W., N. INTO

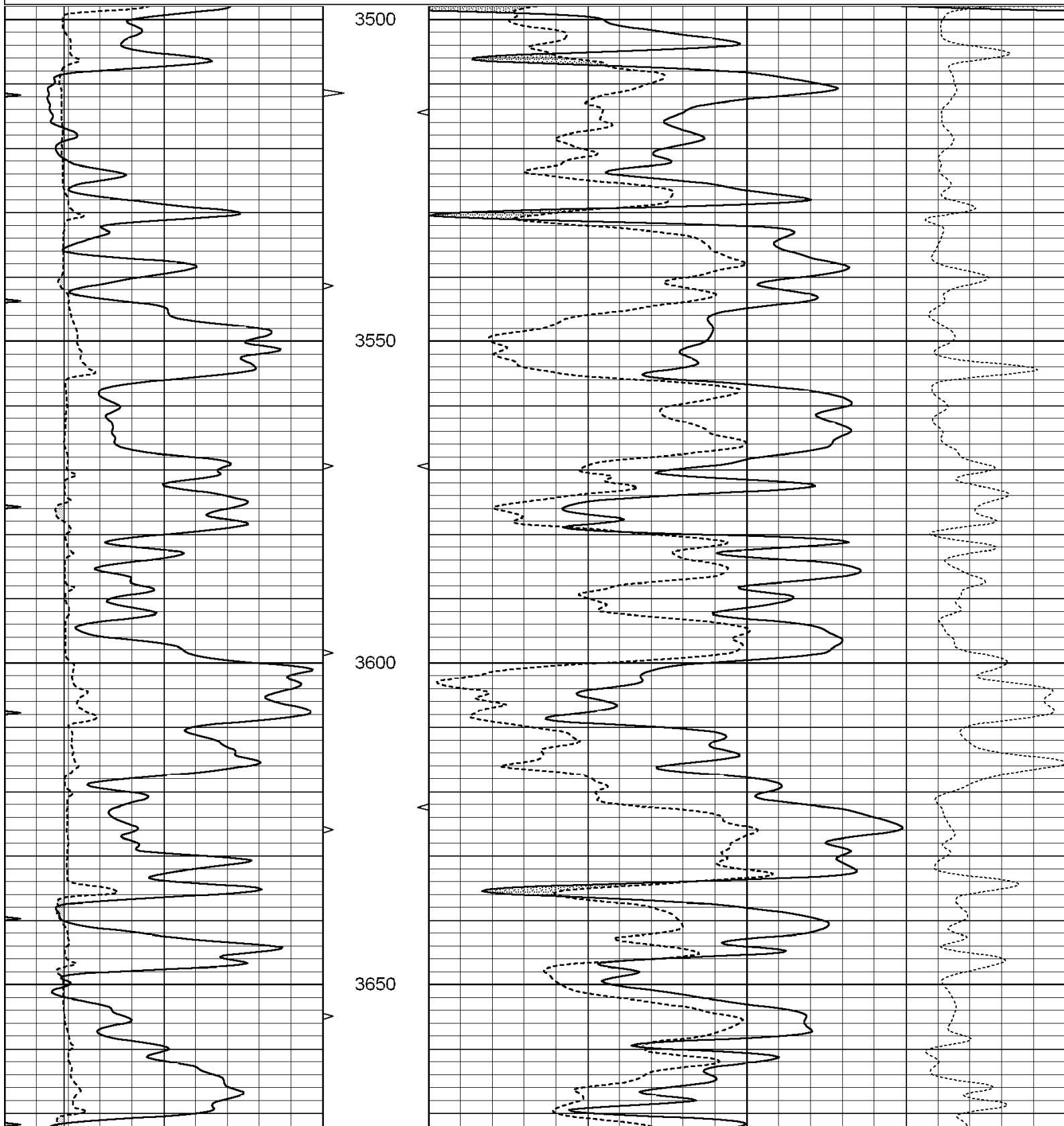


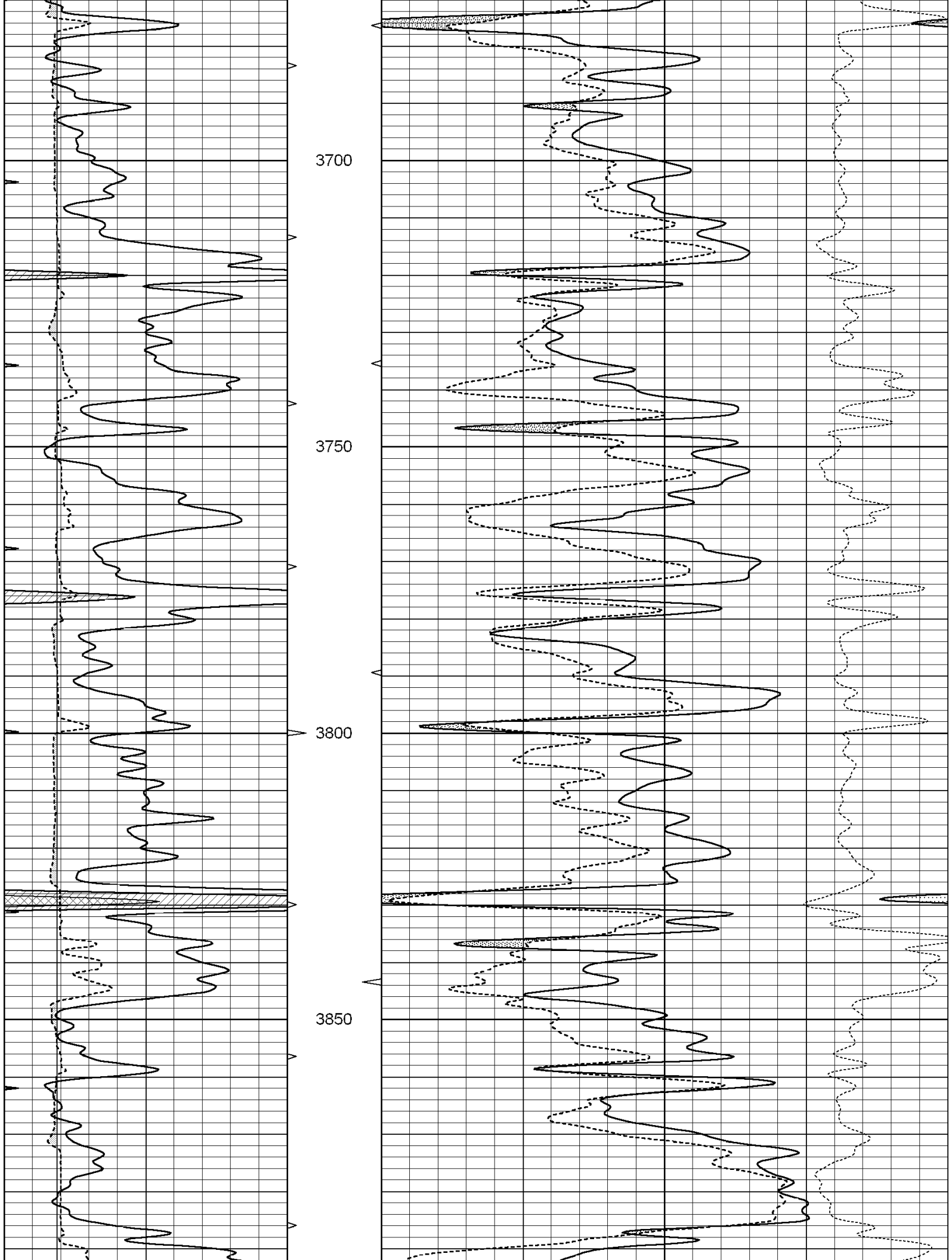
**SUPERIOR**  
Hays,  
Kansas

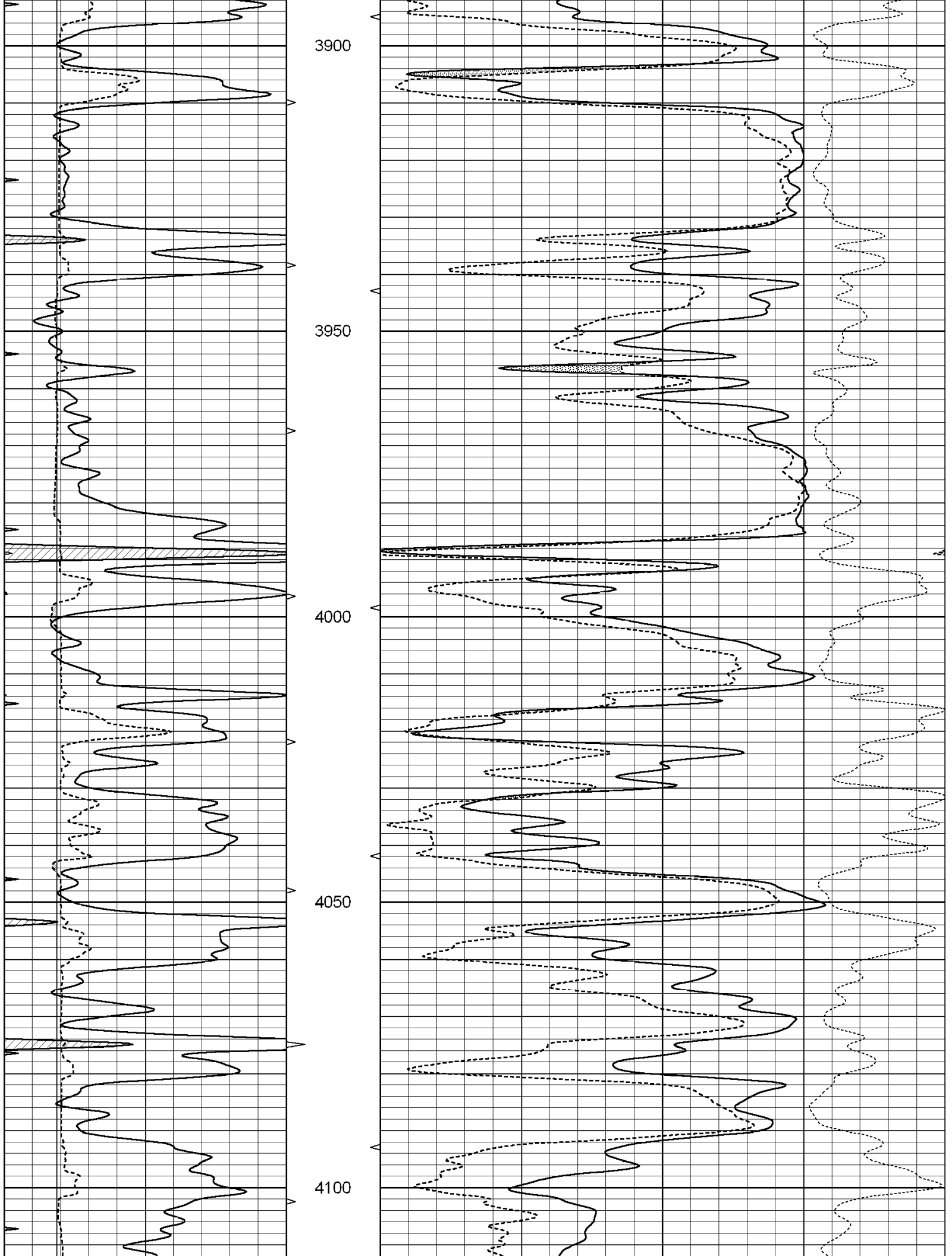
**MAIN SECTION**

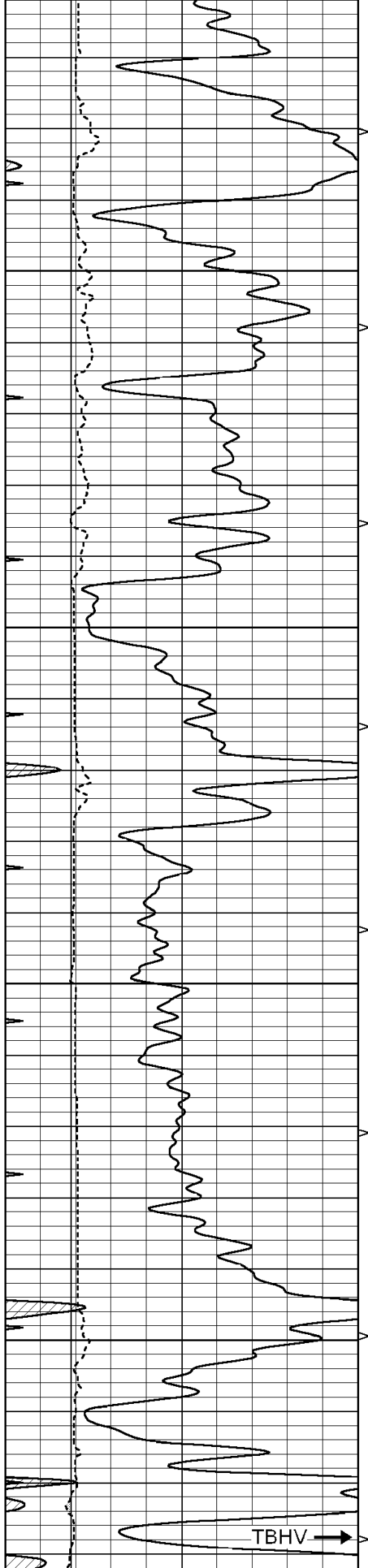
Database File: 004836ddn.db  
 Dataset Pathname: pass3.7  
 Presentation Format: den\_neu  
 Dataset Creation: Wed Mar 24 01:19:04 2010  
 Charted by: Depth in Feet scaled 1:240

0	GAMMA RAY (GAPI)	150	ABHV	30	COMPENSATED DENSITY (pu)	-10
6	CALIPER (in)	16	10 (ft3)	0	COMPENSATED NEUTRON (pu)	-10
0	MINMK	20	TBHV		-0.25 CORRECTION (g/cc)	0.25
			0 (ft3)	10		









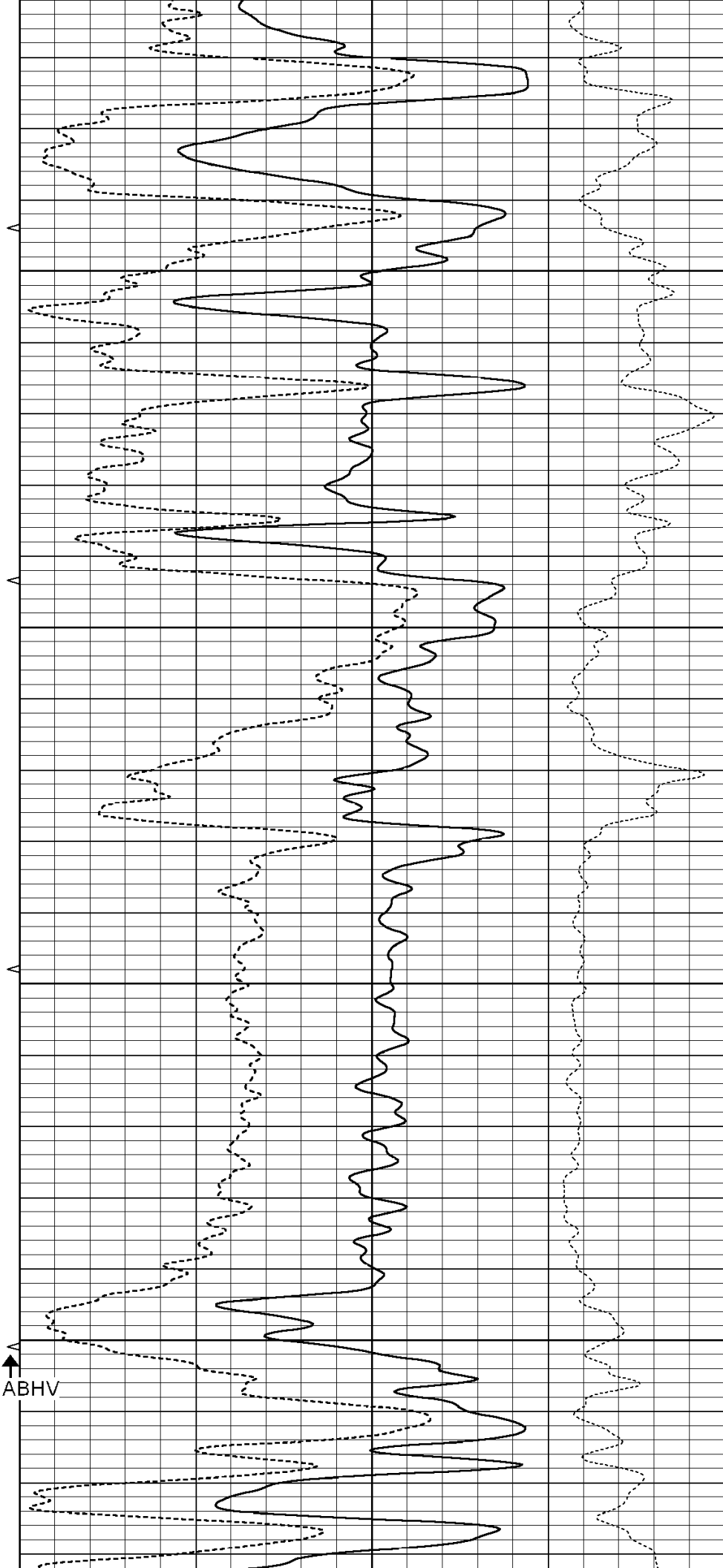
4150

4200

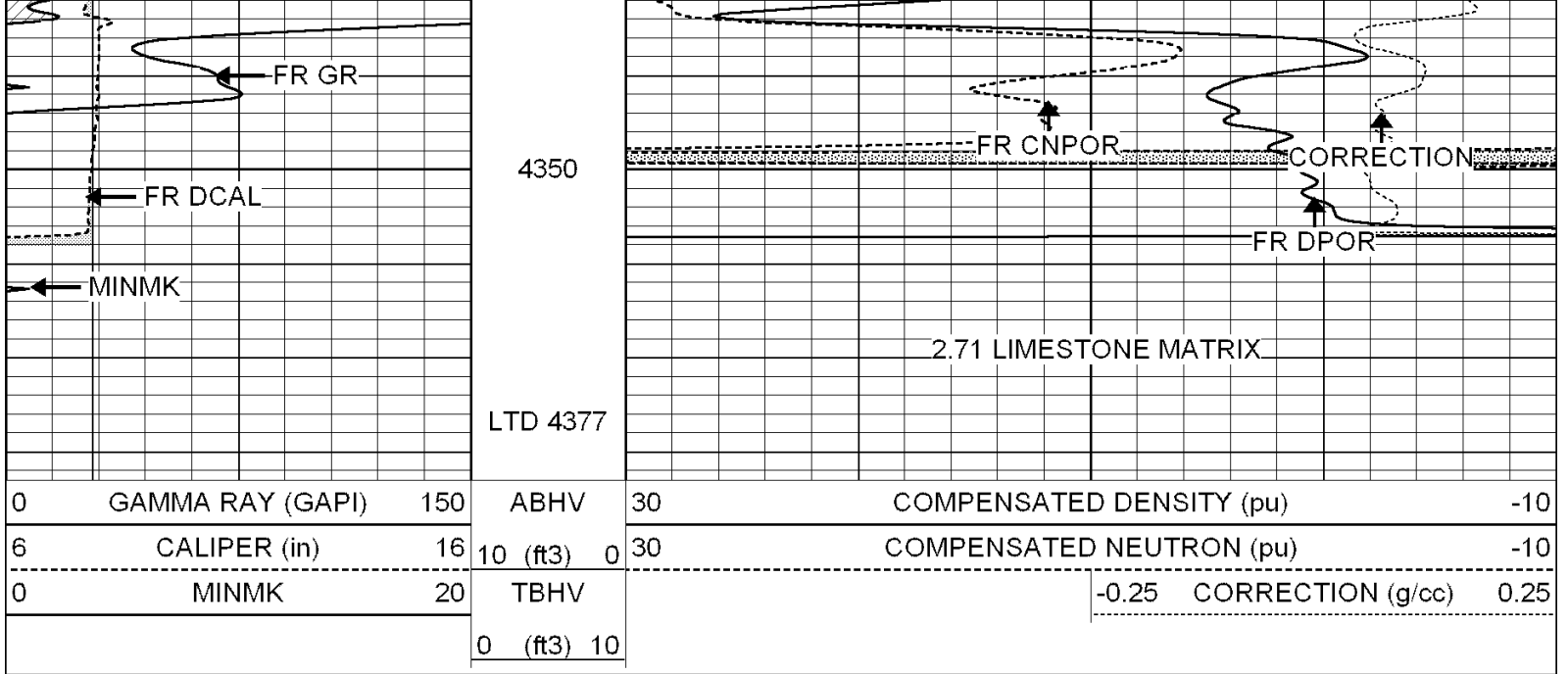
4250

4300

5.5" ABHV



TBHV →

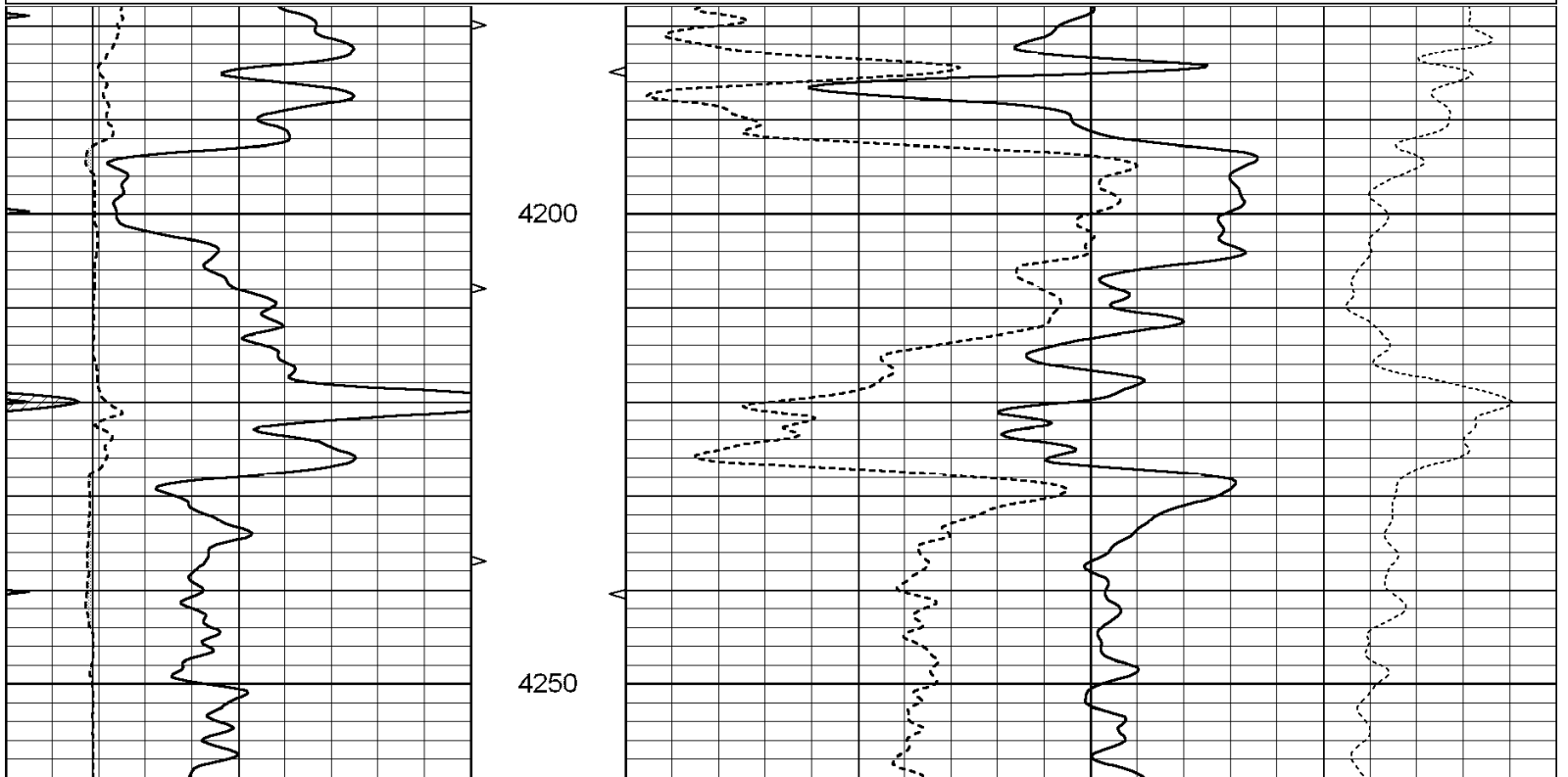


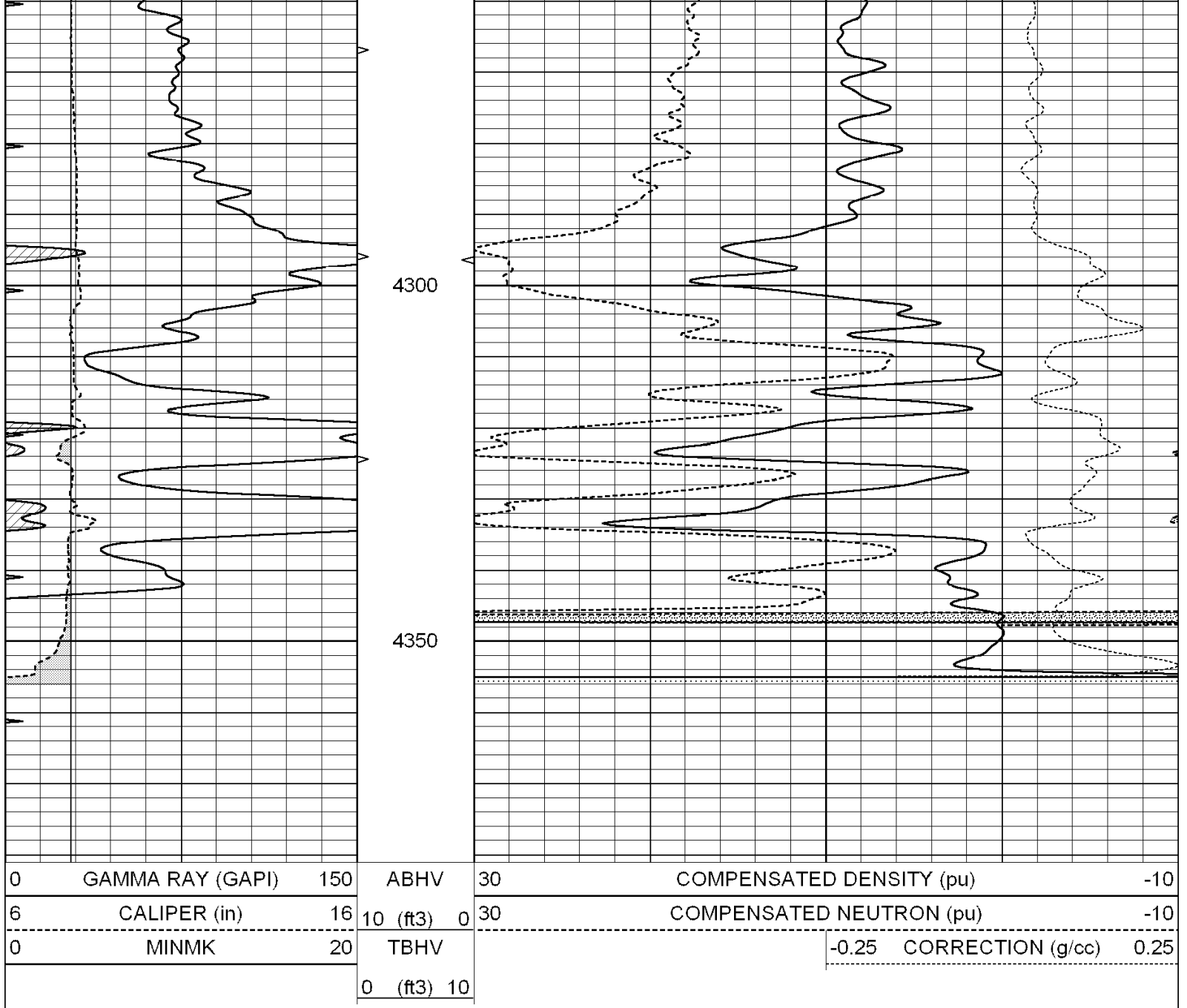
SUPERIOR  
Hays,  
Kansas

# REPEAT SECTION

Database File: 004836ddn.db  
 Dataset Pathname: pass2.9  
 Presentation Format: den\_neu  
 Dataset Creation: Wed Mar 24 01:34:59 2010  
 Charted by: Depth in Feet scaled 1:240

0	GAMMA RAY (GAPI)	150	ABHV	30	COMPENSATED DENSITY (pu)	-10
6	CALIPER (in)	16	10 (ft3)	0 30	COMPENSATED NEUTRON (pu)	-10
0	MINMK	20	TBHV		-0.25 CORRECTION (g/cc)	0.25
			0 (ft3)	10		





### Calibration Report

Database File: 004836ddn.db  
 Dataset Pathname: pass3.7  
 Dataset Creation: Wed Mar 24 01:19:04 2010

### Dual Induction Calibration Report

Serial-Model: DIL3-GEAR  
 Performed: Tue Mar 23 22:50:28 2010

Loop:	Readings				References			Results	
	Air	Loop			Air	Loop		m	b
Deep	0.011	0.656	V	0.000	400.000	mmho-m	640.000	0.000	
Medium	0.013	0.740	V	0.000	462.500	mmho-m	700.000	-13.000	
Internal:	Zero	Cal		Zero	Cal		m	b	
Deep	0.002	0.645	V	0.000	400.000	mmho-m	622.059	-1.071	
Medium	0.007	0.740	V	0.000	462.500	mmho-m	631.393	-4.555	

Litho Density Calibration

	Background	Magnesium	Aluminum	Sandstone	
Window 1	2042.6	12312.8	4225.8	13758.4	cps
Window 2	1855.8	10134.7	3624.2	11113.1	cps
Window 3	1639.4	6760.2	2716.3	7260.3	cps
Window 4	466.4	469.2	466.1	476.5	cps
Long Space	0.0	8278.9	1768.4	9257.4	cps
Short Space	2.2	2377.3	1544.1	2574.2	cps
Rho		1.7100	2.5900	1.3800	g/cc
Pe			2.5700	1.5500	
Rib Angle	: 44.4	Rib Slope	: 0.979	Density/Spine Ratio	: 0.549
Spine Angle	: 74.4	Spine Slope	: 3.577	Spine Intercept	: -18.8

Caliper

	Readings	Reference	
Low Ref	2.2	6.8	
High Ref	4.6	14.0	
	Gain: 3.0		Offset: 0.4

Compensated Neutron Calibration Report

Serial Number:    NEU\_3I  
 Tool Model:        G

CALIBRATION

Detector	Readings	Target	Normalization
Short Space	997.00 cps	1000.00 cps	1.0000
Long Space	986.00 cps	1000.00 cps	1.0000

Gamma Ray Calibration Report

Serial Number:	GR3
Tool Model:	OPEN
Performed:	Wed Mar 24 00:23:01 2010
Calibrator Value:	200.0      GAPI
Background Reading:	3.0          cps
Calibrator Reading:	186.0       cps
Sensitivity:	0.8500      GAPI/cps